



# Cold Storage

---

Released November 19, 2004, by the National Agricultural Statistics Service (NASS), Agricultural Statistics Board, U.S. Department of Agriculture. For information on *Cold Storage* call Perry Game at (202) 720-8784, office hours 7:00 a.m. to 3:30 p.m. ET.

## Highlights

**Frozen food stocks** in refrigerated warehouses on October 31, 2004 were greater than year earlier levels for chicken, beef, orange juice, eggs and cheese.

Butter stocks were down 21 percent from last month and down 38 percent from a year ago.

**Total red meat supplies** in freezers were up 3 percent from last month and up 10 percent from last year. Frozen pork supplies were up 5 percent from last month, but down slightly from the previous year. Stocks of pork bellies were up 42 percent from last month, but down 24 percent from last year.

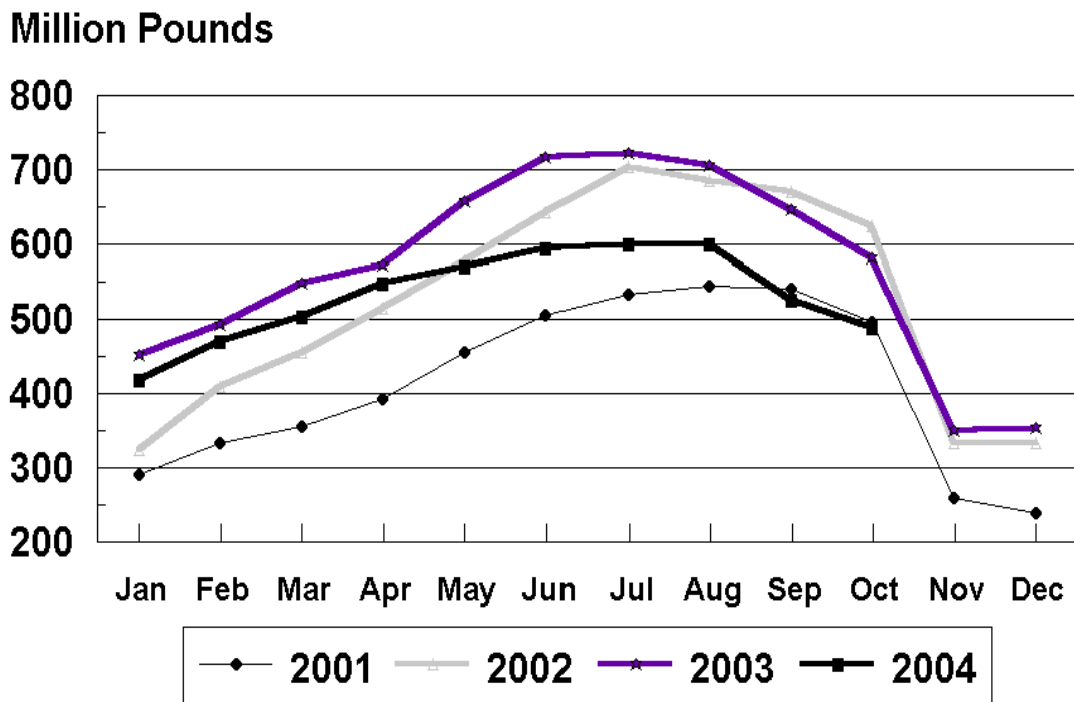
**Total frozen poultry supplies** on October 31, 2004 were 1 percent below the previous month, but 9 percent above a year ago. Total stocks of chicken were up 3 percent from the previous month and up 33 percent from last year. Total pounds of turkey in freezers were down 7 percent from last month and down 16 percent from October 31, 2003.

This page is intentionally blank.

## Contents

	<b>Page</b>
Stocks in Cold Storage: By Commodity, United States, October 2004 .....	4
Stocks in Cold Storage: By Commodity, Region, and United States, September 30, 2004 .....	8
Stocks in Cold Storage: By Commodity, Region, and United States, October 31, 2004 .....	12
Public General Warehouses: Cold Storage Space Occupied by Region and United States, October 2004 .....	16
Apples in Cold Storage: By State and United States, October 31, 2004 and 2003 .....	17
Survey and Estimating Procedures, Revision Policy and Reliability .....	18
Access to Reports .....	19

### Total Frozen Turkeys-United States Cold Storage Stocks, 2001-2004



**Stocks in Cold Storage: By Commodity,  
United States, October 2004**

Commodity	Stocks in All Warehouses			Percent of		Public Warehouse Stocks
	Oct 31, 2003	Sep 30, 2004	Oct 31, 2004	Oct 2003	Sep 2004	Oct 31, 2004
	<i>1,000 Pounds</i>	<i>1,000 Pounds</i>	<i>1,000 Pounds</i>	<i>Percent</i>	<i>Percent</i>	<i>1,000 Lbs</i>
Apples						
Regular Storage	1,791,585	1,052,119	1,698,208	95	161	
Controlled Atmosphere	3,716,010	1,953,788	3,795,285	102	194	
Total	5,507,595	3,005,907	5,493,493	100	183	14,488
Pears						
Bartlett	81,492	103,666	53,753	66	52	
Other Varieties	433,359	394,052	422,995	98	107	
Total	514,851	497,718	476,748	93	96	2,958
Nuts						
Shelled						
Peanuts	168,126	225,378	229,643	137	102	
Pecans	16,417	25,272	19,983	122	79	
Other Shelled	97,314	88,311	90,971	93	103	
Total	281,857	338,961	340,597	121	100	144,343
In-Shell						
Peanuts	10,329	11,945	11,176	108	94	
Pecans	10,703	38,359	27,698	259	72	
Other In-Shell	13,192	9,592	10,115	77	105	
Total	34,224	59,896	48,989	143	82	17,839
Dairy Products						
Butter, Total	170,154	133,008	104,673	62	79	88,241
(Government Owned)	11,084	50	91	1	182	
Natural Cheese						
American, Total	491,098	553,884	526,157	107	95	
(Government Owned)	9,473	6,454	6,868	73	106	
Swiss	22,044	26,992	25,195	114	93	
Other Natural Cheese	209,264	209,841	201,177	96	96	
Total	722,406	790,717	752,529	104	95	422,152
Eggs, Frozen						
Whites	2,653	3,026	2,898	109	96	
Yolks	1,050	1,501	1,321	126	88	
Whole & Mixed	9,916	10,569	10,138	102	96	
Unclassified	3,235	3,624	3,613	112	100	
Total	16,854	18,720	17,970	107	96	17,440
Frozen Poultry						
Chicken						
Broilers, Fryers						
Roasters (Whole)	29,846	24,132	25,588	86	106	
Hens, Mature Chickens	4,391	3,799	3,849	88	101	
Breasts & Breast Meat	94,540	119,834	134,393	142	112	
Drumsticks	10,857	15,710	14,756	136	94	
Leg Quarters	88,445	111,986	115,436	131	103	
Legs	12,515	7,725	9,352	75	121	
Thigh & Thigh Quarters	3,295	13,048	15,198	461	116	
Thigh Meat	14,564	14,716	15,142	104	103	
Wings	31,128	34,580	39,636	127	115	
Paws and Feet	9,562	15,150	16,208	170	107	
Other	301,521	417,194	410,687	136	98	
Total Chicken	600,664	777,874	800,245	133	103	

See footnote(s) at end of table.

--continued

**Stocks in Cold Storage: By Commodity,  
United States, October 2004**

Commodity	Stocks in All Warehouses			Percent of		Public Warehouse Stocks
	Oct 31, 2003	Sep 30, 2004	Oct 31, 2004	Oct 2003	Sep 2004	Oct 31, 2004
	<i>1,000 Pounds</i>	<i>1,000 Pounds</i>	<i>1,000 Pounds</i>	<i>Percent</i>	<i>Percent</i>	<i>1,000 Lbs</i>
Turkeys						
Toms (Whole Carcasses)	198,937	185,035	162,439	82	88	
Hens (Whole Carcasses)	129,253	105,277	97,795	76	93	
Whole Turkeys	328,190	290,312	260,234	79	90	
Other Turkey	254,493	237,076	230,141	90	97	
Total Turkey	582,683	527,388	490,375	84	93	399,897
Ducks	2,690	918	826	31	90	
Total Poultry	1,186,037	1,306,180	1,291,446	109	99	1,152,046
Frozen Fruit						
Apples	25,456	20,898	28,240	111	135	
Apricots	8,554	9,194	8,034	94	87	
Blackberries, Total	28,740	39,576	38,237	133	97	
IQF	19,875	25,635	25,363	128	99	
Pails and Tubs	1,835	4,614	4,237	231	92	
Barrels, 400 lbs net	6,240	9,010	8,358	134	93	
Concentrate	790	317	279	35	88	
Blueberries	86,071	110,057	103,591	120	94	
Boysenberries	1,516	2,245	1,801	119	80	
Cherries, Tart (RTP)	83,314	99,862	92,978	112	93	
Cherries, Tart (Juice)	1,732	2,696	1,837	106	68	
Cherries, Sweet	8,241	9,816	9,463	115	96	
Grapes	10,512	6,915	9,724	93	141	
Peaches	82,408	87,117	86,546	105	99	
Raspberries, Black	1,491	1,259	1,302	87	103	
Raspberries, Red, Total	54,675	60,699	55,064	101	91	
IQF	25,318	25,741	22,895	90	89	
Pails and Tubs	12,249	13,651	12,811	105	94	
Barrels, 400 lbs net	15,525	20,570	18,592	120	90	
Concentrate	1,583	737	766	48	104	
Strawberries, Total	338,315	416,254	345,198	102	83	
IQF and Poly	159,937	217,831	179,355	112	82	
Pails and Tubs	115,292	119,338	91,561	79	77	
Barrels and Drums	47,450	59,108	57,039	120	96	
Juice Stock	15,636	19,977	17,243	110	86	
Other Frozen Fruit	451,285	150,535	387,565	86	257	
Total	1,182,310	1,017,123	1,169,580	99	115	995,975
Frozen Juice						
Orange Juice Conc. <sup>1</sup>	1,335,617	1,735,793	1,605,639	120	93	
(Gallon Equivalent)	134,965	175,403	162,251			
Other Juice Concentrate	307,470	275,963	314,460	102	114	
Total	1,643,087	2,011,756	1,920,099	117	95	219,090

See footnote(s) at end of table.

--continued

**Stocks in Cold Storage: By Commodity,  
United States, October 2004**

Commodity	Stocks in All Warehouses			Percent of		Public Warehouse Stocks
	Oct 31, 2003	Sep 30, 2004	Oct 31, 2004	Oct 2003	Sep 2004	Oct 31, 2004
	<i>1,000 Pounds</i>	<i>1,000 Pounds</i>	<i>1,000 Pounds</i>	<i>Percent</i>	<i>Percent</i>	<i>1,000 Lbs</i>
Frozen Vegetables						
Asparagus	8,795	12,007	11,017	125	92	
Limas, Fordhook	8,787	12,293	10,949	125	89	
Limas, Baby	59,179	53,493	51,770	87	97	
Green Beans, Reg. Cut	174,300	248,246	227,211	130	92	
Green Beans, Fr. Style	30,874	35,662	31,478	102	88	
Broccoli, Spears	41,891	44,366	40,048	96	90	
Broccoli, Chopped & Cut	58,433	55,809	58,287	100	104	
Brussels Sprouts	8,715	7,219	11,493	132	159	
Carrots, Diced	72,728	44,554	89,810	123	202	
Carrots, Other	172,167	76,685	135,751	79	177	
Cauliflower	26,741	14,365	25,702	96	179	
Corn, Cut	618,896	597,676	624,084	101	104	
Corn, Cob	393,673	295,924	301,431	77	102	
Mixed Vegetables	50,755	52,274	53,512	105	102	
Okra	48,000	45,452	42,643	89	94	
Onion Rings	7,007	6,739	7,119	102	106	
Onions, Other	31,686	29,087	32,133	101	110	
Blackeye Peas	3,570	3,095	2,781	78	90	
Green Peas	240,162	327,173	301,079	125	92	
Peas & Carrots Mixed	9,459	5,768	5,712	60	99	
Spinach	61,886	56,783	47,682	77	84	
Squash, Summer/Zucchini	48,891	45,306	52,467	107	116	
Southern Greens	12,937	14,739	14,152	109	96	
Other Vegetables	367,832	357,853	395,818	108	111	
Total	2,557,364	2,442,568	2,574,129	101	105	2,055,187
Potatoes						
French Fries	968,590	915,922	1,000,895	103	109	
Other Frozen	279,392	262,824	275,986	99	105	
Total	1,247,982	1,178,746	1,276,881	102	108	960,387

See footnote(s) at end of table.

--continued

**Stocks in Cold Storage: By Commodity,  
United States, October 2004 (Continued)**

Commodity	Stocks in All Warehouses			Percent of		Public Warehouse Stocks
	Oct 31, 2003	Sep 30, 2004	Oct 31, 2004	Oct 2003	Sep 2004	Oct 31, 2004
	<i>1,000 Pounds</i>	<i>1,000 Pounds</i>	<i>1,000 Pounds</i>	<i>Percent</i>	<i>Percent</i>	<i>1,000 Lbs</i>
<b>Meat</b>						
Frozen Beef						
Boneless <sup>2</sup>	319,538	408,973	412,302	129	101	
Beef Cuts <sup>3</sup>	55,633	48,271	46,721	84	97	
Total	375,171	457,244	459,023	122	100	455,529
(Government Owned)	5,482	3,334	5,399	98	162	
Frozen Pork						
Picnics, Bone-in	11,999	15,177	16,596	138	109	
Hams, Total	110,873	108,495	100,484	91	93	98,124
Bone-in	75,229	65,534	60,643	81	93	59,613
Boneless <sup>4</sup>	35,644	42,961	39,841	112	93	38,511
Bellies	21,135	11,344	16,066	76	142	
Loins, Total	32,285	30,488	34,602	107	113	31,760
Bone-in	12,435	16,158	19,585	157	121	
Boneless <sup>5</sup>	19,850	14,330	15,017	76	105	
Ribs <sup>6</sup>	53,694	46,804	57,813	108	124	
Butts	7,422	5,805	7,676	103	132	
Trimmings <sup>7</sup>	34,435	23,533	26,407	77	112	
Other <sup>8</sup>	71,256	82,412	92,952	130	113	
Variety Meats <sup>9</sup>	50,403	49,309	45,142	90	92	
Unclassified <sup>10</sup>	53,341	48,749	47,474	89	97	
Total	446,843	422,116	445,212	100	105	399,925
(Government Owned)	1,461	1,028	1,366	93	133	
Other						
Veal	4,762	4,106	3,768	79	92	
Lamb & Mutton	4,485	4,179	4,166	93	100	
Total	9,247	8,285	7,934	86	96	7,918
Canned						
Canned Hams	5,230	5,092	4,350	83	85	
Other Canned Meat	425	1,660	1,298	305	78	
Total	5,655	6,752	5,648	100	84	5,555
Total	836,916	894,397	917,817	110	103	868,927
<b>Miscellaneous</b>						
Cooler	1,157,026	815,871	924,642	80	113	446,321
Freezer	2,352,782	2,111,258	2,109,797	90	100	2,038,504
Total	3,509,808	2,927,129	3,034,439	86	104	2,484,825
<b>Commodities</b>						
Stored in Coolers	8,231,861	5,531,451	8,056,728	98	146	1,208,817
Stored in Freezers	11,179,584	11,091,375	11,362,662	102	102	8,390,242
Total	19,411,445	16,622,826	19,419,390	100	117	9,599,059

<sup>1</sup> Adjusted to 42.0 degrees Brix equivalent (9.896 pounds per gallon).

<sup>2</sup> Includes all boxed boneless beef, such as ground beef, roasts, steaks, loins, strips, rounds, trimmings, etc. Variety meats (edible offal), such as tongues, livers, hearts, kidneys, and other organs removed from slaughtered beef, are included as miscellaneous freezer stocks.

<sup>3</sup> Includes all boxed primal beef cuts, bone-in.

<sup>4</sup> Includes full ham, bone removed and individual muscles separated.

<sup>5</sup> Includes pork tenderloins.

<sup>6</sup> Includes spareribs and backribs.

<sup>7</sup> Includes 42% regular trimmings, 72% special trimmings, boneless picnic meat, jowls, neckbone trimmings, blade, cheek, head, and shank meat, etc. Packaged bacon, sausage, and processed items, such as hot dogs and luncheon meats, are included in miscellaneous cooler or freezer stocks.

<sup>8</sup> Includes ears, tails, feet, neckbones and snouts.

<sup>9</sup> Includes tongues, kidneys, livers, stomachs, hearts, chitterlings, salivary glands, and other organs removed from slaughtered hogs.

<sup>10</sup> Includes product unable to be classified elsewhere in this report.

**Stocks in Cold Storage: By Commodity, Region,  
and United States, September 30, 2004**

Commodity	New England	Middle Atlantic	East North Central	West North Central	South Atlantic
	<i>1,000 Pounds</i>	<i>1,000 Pounds</i>	<i>1,000 Pounds</i>	<i>1,000 Pounds</i>	<i>1,000 Pounds</i>
Total Fresh Apples	24	320,458	13,520	35	8
Nuts					
Shelled					
Peanuts		216	16	14	153,250
Pecans <sup>1</sup>		109			7,201
In-Shell					
Pecans <sup>1</sup>					5,229
Dairy Products					
Natural Cheese					
American, Total	23,588	62,623	211,658	123,637	4,869
Other Natural Cheese	330	12,303	121,458	56,859	129
Frozen Poultry					
Chicken					
Broilers, Fryers					
Roasters (Whole)		1,894	240	732	5,549
Hens, Mature Chickens	25	175	132	265	1,095
Other	1,078	15,938	16,404	42,385	298,756
Total Chicken	1,103	18,007	16,776	43,382	305,400
Turkeys					
Whole Turkeys	5,969	27,678	15,386	43,627	78,608
Other Turkey	1,229	14,062	16,602	50,001	95,126
Total Turkey	7,198	41,740	31,988	93,628	173,734
Ducks		165	421	1	74
Total Poultry	8,301	59,912	49,185	137,011	479,208
Frozen Fruit					
Apples	16	7,701	6,101	47	372
Blueberries	12,011	8,848	45,957	1,656	4,650
Cherries, Tart (RTP)	2	4,986	81,990	56	1,679
Cherries, Sweet	1	147	4,130	591	3
Peaches	47	1,678	11,292	2,867	598
Raspberries, Red	2	1,289	1,423	468	226
Strawberries, Total	28	7,182	5,636	1,585	4,158
Other Frozen Fruit	77	8,161	59,591	2,838	1,501

See footnote(s) at end of table.

--continued



**Stocks in Cold Storage: By Commodity, Region,  
and United States, September 30, 2004 (continued)**

Commodity	East South Central	West South Central	Mountain	Pacific	US Total
	<i>1,000 Pounds</i>	<i>1,000 Pounds</i>	<i>1,000 Pounds</i>	<i>1,000 Pounds</i>	<i>1,000 Pounds</i>
Total Fresh Apples		94	40	2,671,728	3,005,907
Nuts					
Shelled					
Peanuts	13,496	58,184	80	122	225,378
Pecans <sup>1</sup>	628	17,250		84	25,272
In-Shell					
Pecans <sup>1</sup>	2,056	31,074			38,359
Dairy Products					
Natural Cheese					
American, Total	350	4,455	31,953	90,751	553,884
Other Natural Cheese	2,366	173	6,317	9,906	209,841
Frozen Poultry					
Chicken					
Broilers, Fryers					
Roasters (Whole)	2,609	10,158	326	2,624	24,132
Hens, Mature Chickens	268	764	8	1,067	3,799
Other	139,089	202,847	2,771	30,675	749,943
Total Chicken	141,966	213,769	3,105	34,366	777,874
Turkeys					
Whole Turkeys	3,630	70,001	20,419	24,994	290,312
Other Turkey	2,974	26,204	10,674	20,204	237,076
Total Turkey	6,604	96,205	31,093	45,198	527,388
Ducks	15	85	68	89	918
Total Poultry	148,585	310,059	34,266	79,653	1,306,180
Frozen Fruit					
Apples	7	506	51	6,097	20,898
Blueberries	183	920	105	35,727	110,057
Cherries, Tart (RTP)		155	1,909	9,085	99,862
Cherries, Sweet	1	68	790	4,085	9,816
Peaches	40	584	30	69,981	87,117
Raspberries, Red	96	176	8	57,011	60,699
Strawberries, Total	1,194	28,906	104	367,461	416,254
Other Frozen Fruit	104	11,971	1,832	64,460	150,535

See footnote(s) at end of table.

--continued

**Stocks in Cold Storage: By Commodity, Region,  
and United States, September 30, 2004 (continued)**

Commodity	New England	Middle Atlantic	East North Central	West North Central	South Atlantic
	<i>1,000 Pounds</i>	<i>1,000 Pounds</i>	<i>1,000 Pounds</i>	<i>1,000 Pounds</i>	<i>1,000 Pounds</i>
Frozen Juice					
Orange Juice Conc. <sup>2</sup>	26		1,173	420	1,670,290
Other Juice Concentrate	3,236	23,701	13,364	1,914	119,452
Frozen Vegetables <sup>3</sup>					
Asparagus		740	7,731	96	175
Limas, Fordhook		2,529	1,377		644
Limas, Baby		6,567	1,479	1	6,304
Green Beans, Reg. Cut		39,053	62,027	947	21,377
Green Beans, Fr. Style		10,593	10,963	671	1,968
Broccoli, Spears		7,407	5,646	1	3,576
Broccoli, Chopped & Cut		5,732	5,646	2,222	6,614
Brussels Sprouts		620	776		2,389
Carrots, Diced		1,687	8,180	244	3,683
Carrots, Other		6,122	7,526	309	4,290
Cauliflower		2,052	1,712	138	897
Corn, Cut		53,518	78,194	41,729	26,073
Corn, Cob		18,626	32,244	23,093	11,896
Mixed Vegetables		6,068	8,568	62	2,699
Okra		1,996	454		4,728
Onion Rings		199	2,650	902	1,512
Onions, Other		4,114	4,101	300	2,368
Blackeye Peas		313	37		1,430
Green Peas		46,866	36,561	15,647	10,560
Peas & Carrots Mixed		1,473	1,145		448
Spinach		9,095	3,863	86	3,200
Squash, Summer/Zucchini		2,010	13,638		4,296
Southern Greens		1,303	253	1	2,354
Other Vegetables		47,613	50,471	8,992	21,976
Potatoes					
French Fries	31,884	20,662	56,142	114,281	31,239
Other Frozen	6,210	10,786	29,709	7,678	4,701
Meat					
Frozen Beef					
Boneless <sup>4</sup>	1,169	59,614	46,599	119,079	32,800
Beef Cuts <sup>5</sup>	114	2,492	8,688	8,060	2,525
Frozen Pork					
Ribs <sup>6</sup>	165	892	10,187	21,167	5,848
Trimming <sup>7</sup>		191	5,900	13,187	1,545
Other <sup>8</sup>	1,321	563	9,925	41,372	14,368
Other					
Veal		1,024	750	110	50
Lamb & Mutton		572	1,092	79	269

See footnote(s) at end of table.

--continued

**Stocks in Cold Storage: By Commodity, Region,  
and United States, September 30, 2004 (continued)**

Commodity	East South Central	West South Central	Mountain	Pacific	US Total
	<i>1,000 Pounds</i>	<i>1,000 Pounds</i>	<i>1,000 Pounds</i>	<i>1,000 Pounds</i>	<i>1,000 Pounds</i>
Frozen Juice					
Orange Juice Concentrate	32	2,189	173	61,490	1,735,793
Other Juice Concentrate	115	13,669	909	99,603	275,963
Frozen Vegetables <sup>3</sup>					
Asparagus		277	6	2,982	12,007
Limas, Fordhook		91	6	7,646	12,293
Limas, Baby		1,331	2,817	34,994	53,493
Green Beans, Reg. Cut		1,149	367	123,326	248,246
Green Beans, Fr. Style		156	36	11,275	35,662
Broccoli, Spears		17,009	876	9,851	44,366
Broccoli, Chopped & Cut		14,325	366	20,904	55,809
Brussels Sprouts		211		3,223	7,219
Carrots, Diced		1,237	68	29,455	44,554
Carrots, Other		6,247	42	52,149	76,685
Cauliflower		1,849	14	7,703	14,365
Corn, Cut		3,202	6,082	388,878	597,676
Corn, Cob		1,235	11,385	197,445	295,924
Mixed Vegetables		7,707	100	27,070	52,274
Okra		37,560		714	45,452
Onion Rings		510	345	621	6,739
Onions, Other		1,967	2,180	14,057	29,087
Blackeye Peas		1,146		169	3,095
Green Peas		3,164	11,969	202,406	327,173
Peas & Carrots Mixed		273	36	2,393	5,768
Spinach		5,959	81	34,499	56,783
Squash, Summer/Zucchini		5,512	983	18,867	45,306
Southern Greens		8,152		2,676	14,739
Other Vegetables		30,975	7,126	190,700	357,853
Potatoes					
French Fries	10,890	13,060	210,702	427,062	915,922
Other Frozen	1,389	24,185	57,593	120,573	262,824
Meat					
Frozen Beef					
Boneless <sup>4</sup>	4,467	81,377	6,541	57,327	408,973
Beef Cuts <sup>5</sup>	1,333	7,326	7,785	9,948	48,271
Frozen Pork					
Ribs <sup>6</sup>	3,064	3,255	204	2,022	46,804
Trimming <sup>7</sup>	183	2,185	5	337	23,533
Other <sup>8</sup>	10,714	2,059	248	1,842	82,412
Other					
Veal	5	197		1,970	4,106
Lamb & Mutton		354	16	1,797	4,179

<sup>1</sup> East North Central combined with South Atlantic. Mountain and West North Central combined with West South Central.

<sup>2</sup> Middle Atlantic combined with South Atlantic.

<sup>3</sup> New England combined with Middle Atlantic. East South Central combined with South Atlantic.

<sup>4</sup> Includes all boxed boneless beef, such as ground beef, roasts, steaks, loins, strips, rounds, trimmings, etc. Variety meats (edible offal), such as tongues, livers, hearts, kidneys, and other organs removed from slaughtered beef, are included as miscellaneous freezer stocks.

<sup>5</sup> Includes all boxed primal beef cuts, bone-in.

<sup>6</sup> Includes spareribs and backribs.

<sup>7</sup> Includes 42% regular trimmings, 72% special trimmings, boneless picnic meat, jowls, neckbone trimmings, blade, cheek, head, and shank meat, etc. Packaged bacon, sausage, and processed items, such as hot dogs and luncheon meats, are included in miscellaneous cooler or freezer stocks.

<sup>8</sup> Includes ears, tails, feet, neckbones and snouts.

**Stocks in Cold Storage: By Commodity, Region,  
and United States, October 31, 2004**

Commodity	New England	Middle Atlantic	East North Central	West North Central	South Atlantic
	<i>1,000 Pounds</i>	<i>1,000 Pounds</i>	<i>1,000 Pounds</i>	<i>1,000 Pounds</i>	<i>1,000 Pounds</i>
Total Fresh Apples	47,809	632,863	376,622	5,354	279,023
Nuts					
Shelled					
Peanuts		216	16	14	173,817
Pecans <sup>1</sup>	138	77			5,499
In-Shell					
Pecans <sup>1</sup>					3,746
Dairy Products					
Natural Cheese					
American, Total	22,854	58,885	204,790	118,224	5,074
Other Natural Cheese	424	11,157	116,356	56,109	146
Frozen Poultry					
Chicken					
Broilers, Fryers					
Roasters (Whole)		1,908	259	796	5,279
Hens, Mature Chickens	27	226	175	285	1,224
Other	1,241	17,668	17,429	37,554	293,879
Total Chicken	1,268	19,802	17,863	38,635	300,382
Turkeys					
Whole Turkeys	4,372	25,647	15,610	38,015	72,571
Other Turkey	1,539	14,281	17,735	45,942	95,351
Total Turkey	5,911	39,928	33,345	83,957	167,922
Ducks		220	351	10	50
Total Poultry	7,179	59,950	51,559	122,602	468,354
Frozen Fruit					
Apples	16	10,128	8,990	41	443
Blueberries	11,373	8,725	43,817	1,515	4,048
Cherries, Tart (RTP)	2	5,307	76,405	87	1,557
Cherries, Sweet	1	134	3,817	616	3
Peaches	83	2,443	10,920	3,360	594
Raspberries, Red	2	1,365	1,404	403	223
Strawberries, Total	24	6,877	8,650	1,457	3,765
Other Frozen Fruit	1,023	14,833	219,915	3,291	3,195

See footnote(s) at end of table.

--continued

**Stocks in Cold Storage: By Commodity, Region,  
and United States, October 31, 2004 (continued)**

Commodity	East South Central	West South Central	Mountain	Pacific	US Total
	<i>1,000 Pounds</i>	<i>1,000 Pounds</i>	<i>1,000 Pounds</i>	<i>1,000 Pounds</i>	<i>1,000 Pounds</i>
Total Fresh Apples	99	10,000	79,270	4,062,453	5,493,493
Nuts					
Shelled					
Peanuts	19,661	35,721	74	124	229,643
Pecans <sup>1</sup>	323	13,872		74	19,983
In-Shell					
Pecans <sup>1</sup>	118	23,834			27,698
Dairy Products					
Natural Cheese					
American, Total	308	2,005	29,930	84,087	526,157
Other Natural Cheese	2,228	181	5,798	8,778	201,177
Frozen Poultry					
Chicken					
Broilers, Fryers					
Roasters (Whole)	4,568	9,650	325	2,803	25,588
Hens, Mature Chickens	2	719	4	1,187	3,849
Other	151,966	213,552	2,036	35,483	770,808
Total Chicken	156,536	223,921	2,365	39,473	800,245
Turkeys					
Whole Turkeys	3,311	58,477	18,563	23,668	260,234
Other Turkey	3,266	20,042	11,122	20,863	230,141
Total Turkey	6,577	78,519	29,685	44,531	490,375
Ducks	13	75	64	43	826
Total Poultry	163,126	302,515	32,114	84,047	1,291,446
Frozen Fruit					
Apples	9	593	68	7,952	28,240
Blueberries	173	898	99	32,943	103,591
Cherries, Tart (RTP)		176	1,775	7,669	92,978
Cherries, Sweet	1	61	882	3,948	9,463
Peaches	39	1,307	66	67,734	86,546
Raspberries, Red	88	143	8	51,428	55,064
Strawberries, Total	1,075	25,562	128	297,660	345,198
Other Frozen Fruit	254	10,809	1,686	132,559	387,565

See footnote(s) at end of table.

--continued

**Stocks in Cold Storage: By Commodity, Region,  
and United States, October 31, 2004 (continued)**

Commodity	New England	Middle Atlantic	East North Central	West North Central	South Atlantic
	<i>1,000 Pounds</i>	<i>1,000 Pounds</i>	<i>1,000 Pounds</i>	<i>1,000 Pounds</i>	<i>1,000 Pounds</i>
Frozen Juice					
Orange Juice Conc. <sup>2</sup>	24		1,132	286	1,545,380
Other Juice Concentrate	7,664	45,603	13,154	1,724	122,369
Frozen Vegetables <sup>3</sup>					
Asparagus		724	7,050	72	117
Limas, Fordhook		3,049	1,479		668
Limas, Baby		8,563	1,560		7,792
Green Beans, Reg. Cut		33,778	56,703	1,221	20,058
Green Beans, Fr. Style		9,523	10,364	328	1,858
Broccoli, Spears		7,246	5,027		3,295
Broccoli, Chopped & Cut		6,383	6,229	2,364	6,599
Brussels Sprouts		988	1,217	1	2,586
Carrots, Diced		4,418	14,934	293	7,191
Carrots, Other		14,855	16,364	506	6,840
Cauliflower		1,787	2,650	216	1,217
Corn, Cut		60,062	86,685	43,438	27,100
Corn, Cob		20,116	34,578	21,841	12,594
Mixed Vegetables		5,993	9,164	55	2,676
Okra		1,573	403		4,817
Onion Rings		315	2,731	1,078	1,313
Onions, Other		3,991	4,515	281	2,608
Blackeye Peas		305	57		1,369
Green Peas		43,032	34,338	14,513	9,724
Peas & Carrots Mixed		1,444	1,119	1	427
Spinach		8,760	3,312	74	2,894
Squash, Summer/Zucchini		3,239	13,515		4,348
Southern Greens		1,248	369	1	2,359
Other Vegetables		47,267	57,360	12,663	23,622
Potatoes					
French Fries	33,030	23,237	62,190	124,706	31,795
Other Frozen	6,062	10,283	31,367	8,038	4,809
Meat					
Frozen Beef					
Boneless <sup>4</sup>	1,159	54,151	51,765	122,088	38,227
Beef Cuts <sup>5</sup>	131	2,597	7,465	7,650	2,567
Frozen Pork					
Ribs <sup>6</sup>	210	1,062	12,691	26,697	8,328
Trimmings <sup>7</sup>		182	7,209	14,116	1,591
Other <sup>8</sup>	1,522	654	10,418	45,422	14,718
Other					
Veal		898	685	101	66
Lamb & Mutton		608	1,043	66	207

See footnote(s) at end of table.

--continued

**Stocks in Cold Storage: By Commodity, Region,  
and United States, October 31, 2004 (continued)**

Commodity	East South Central	West South Central	Mountain	Pacific	US Total
	<i>1,000 Pounds</i>	<i>1,000 Pounds</i>	<i>1,000 Pounds</i>	<i>1,000 Pounds</i>	<i>1,000 Pounds</i>
Frozen Juice					
Orange Juice Concentrate	30	2,095	159	56,533	1,605,639
Other Juice Concentrate	121	15,496	1,324	107,005	314,460
Frozen Vegetables <sup>3</sup>					
Asparagus		334	5	2,715	11,017
Limas, Fordhook		125	6	5,622	10,949
Limas, Baby		947	2,776	30,132	51,770
Green Beans, Reg. Cut		1,091	256	114,104	227,211
Green Beans, Fr. Style		218	36	9,151	31,478
Broccoli, Spears		15,810	788	7,882	40,048
Broccoli, Chopped & Cut		16,860	324	19,528	58,287
Brussels Sprouts		204		6,497	11,493
Carrots, Diced		1,504	133	61,337	89,810
Carrots, Other		6,307	475	90,404	135,751
Cauliflower		3,189	16	16,627	25,702
Corn, Cut		2,983	6,072	397,744	624,084
Corn, Cob		884	11,387	200,031	301,431
Mixed Vegetables		7,398	14	28,212	53,512
Okra		35,127		723	42,643
Onion Rings		542	500	640	7,119
Onions, Other		1,772	2,411	16,555	32,133
Blackeye Peas		793		257	2,781
Green Peas		3,055	11,906	184,511	301,079
Peas & Carrots Mixed		232	36	2,453	5,712
Spinach		4,722	69	27,851	47,682
Squash, Summer/Zucchini		6,217	888	24,260	52,467
Southern Greens		8,024		2,151	14,152
Other Vegetables		30,908	7,530	216,468	395,818
Potatoes					
French Fries	11,922	12,872	237,421	463,722	1,000,895
Other Frozen	1,398	28,445	60,580	125,004	275,986
Meat					
Frozen Beef					
Boneless <sup>4</sup>	4,683	77,384	6,709	56,136	412,302
Beef Cuts <sup>5</sup>	1,622	7,279	7,780	9,630	46,721
Frozen Pork					
Ribs <sup>6</sup>	3,027	3,067	209	2,522	57,813
Trimming <sup>7</sup>	338	2,634	31	306	26,407
Other <sup>8</sup>	16,502	1,899	239	1,578	92,952
Other					
Veal	5	129		1,884	3,768
Lamb & Mutton		269	71	1,902	4,166

<sup>1</sup> East North Central combined with South Atlantic. Mountain and West North Central Combined with West South Central.

<sup>2</sup> Middle Atlantic combined with South Atlantic.

<sup>3</sup> New England combined with Middle Atlantic. East South Central combined with South Atlantic.

<sup>4</sup> Includes all boxed boneless beef, such as ground beef, roasts, steaks, loins, strips, rounds, trimmings, etc. Variety meats (edible offal), such as tongues, livers, hearts, kidneys, and other organs removed from slaughtered beef, are included as miscellaneous freezer stocks.

<sup>5</sup> Includes all boxed primal beef cuts, bone-in.

<sup>6</sup> Includes spareribs and backribs.

<sup>7</sup> Includes 42% regular trimmings, 72% special trimmings, boneless picnic meat, jowls, neckbone trimmings, blade, cheek, head, and shank meat, etc. Packaged bacon, sausage, and processed items, such as hot dogs and luncheon meats, are included in miscellaneous cooler or freezer stocks.

<sup>8</sup> Includes ears, tails, feet, neckbones and snouts.

**Public General Warehouses: Cold Storage Space Occupied  
by Region and United States, October 2004**

Region	Cooler				Freezer			
	Usable Space	Usable Space Occupied			Usable Space	Usable Space Occupied		
		Oct 31 2004	Oct 31 2003	Sep 30 2004		Oct 31 2004	Oct 31 2003	Sep 30 2004
	<i>1,000 Cu Ft</i>	<i>Percent</i>	<i>Percent</i>	<i>Percent</i>	<i>1,000 Cu Ft</i>	<i>Percent</i>	<i>Percent</i>	<i>Percent</i>
New England	1,741	72	81	82	15,747	80	80	85
Middle Atlantic	46,915	62	61	62	136,368	56	62	65
E. North Central	58,770	55	60	60	218,575	55	58	61
W. North Central	46,644	40	55	54	158,492	52	66	67
South Atlantic	51,288	27	45	47	199,449	50	63	60
E. South Central	9,788	45	59	62	70,973	42	50	50
W. South Central	27,769	23	28	25	139,157	40	56	53
Mountain	12,153	40	55	55	61,415	65	71	70
Pacific	56,306	38	45	48	319,376	71	73	71
US	311,374	42	51	52	1,319,552	57	64	64

## Cold Storage Regions





**Apples in Cold Storage: By State  
and United States, October 2004**

State	All Warehouses		
	Oct 31, 2003	Sep 30, 2004	Oct 31 2004
	<i>1,000 Pounds</i>	<i>1,000 Pounds</i>	
CA	91,668	10,010	85,188
MI	438,345	786	336,351
N ENG	52,524	24	47,809
NY	506,100	170,226	352,590
OH	23,290	12,680	23,250
OR	40,167	11,718	77,265
PA	291,284	150,231	280,000
VA	161,547	0	150,554
WA	3,700,000	2,650,000	3,900,000
WV	79,214	0	82,991
Other States	123,456	232	157,495
US	5,507,595	3,005,907	5,493,493

**Survey Procedures:** Questionnaires are mailed about the 24th of each month to all operators on the list of approximately 1,400 public and private cold storage warehouses. In addition, apple data are obtained from special surveys and other sources (State Departments of Agriculture, U.S. Apple Association, etc.). All survey data represent stocks as of the end of the month.

Data are collected from warehouses artificially cooled to a temperature of 50 degrees Fahrenheit or lower, and whose food products are normally stored for 30 days or more. All food items in these facilities are reported regardless of the number of days stored at the time of the report. Also included are specialized storage facilities meeting the 30 day requirement, such as fruit houses, dairy manufacturing plants, frozen fruit, fruit juice, and vegetable processors, and poultry and meat packing plants. Excluded are stocks in space maintained by wholesalers, jobbers, distributors, chain stores, locker plants containing individual lockers, meat packer branch houses, and frozen food processors whose entire inventories are turned over more than once a month.

**Estimating Procedures:** Data for reporting firms are added to estimates for non-reporting firms to obtain regional and National totals. Estimates for non-reporting firms are obtained by multiplying the previous month's figure by a percent change from the previous month. The percent change is calculated for each item from totals of the current and previous month summed from firms that reported both months.

**Revision Policy:** Data are revised the following month based on late reports or corrected data. Final figures are published in the annual summary in February of the following year.

**Reliability:** Reports are received from 900 firms each month which represent about 70 percent of the total capacity. Firms that are not on the list or firms who have never reported are not represented in the data. Monthly data can vary due to different firms reporting month to month. Survey data are also subject to non-sampling errors such as omissions and mistakes in reporting and in processing the data. While these errors cannot be measured directly, they are minimized by carefully reviewing all reported data for consistency and reasonableness.

The United States Department of Agriculture (USDA) prohibits discrimination in all its programs on the basis of race, color, national origin, gender, religion, age, disability, political beliefs, sexual orientation, and marital or family status. (Not all prohibited bases apply to all programs.) Persons with disabilities who require alternative means for communication of program information (braille, large print, audiotape, etc.) should contact the USDA's TARGET Center at 202-720-2600 (voice and TDD).

To file a complaint of discrimination, write USDA, Director, Office of Civil Rights, Room 326-W, Whitten Building, 1400 Independence Avenue, SW, Washington, D.C., 20250-9410, or call 202-720-5964 (voice or TDD). USDA is an equal opportunity provider and employer.

## **ACCESS TO REPORTS!!**

---

For your convenience, there are several ways to obtain NASS reports, data products, and services:

### **INTERNET ACCESS**

All NASS reports are available free of charge on the worldwide Internet. For access, connect to the Internet and go to the NASS Home Page at: [www.usda.gov/nass/](http://www.usda.gov/nass/). Select "Today's Reports" or Publications and then Reports Calendar or Publications and then Search, by Title or Subject.

### **E-MAIL SUBSCRIPTION**

All NASS reports are available by subscription free of charge direct to your e-mail address. Starting with the NASS Home Page at [www.usda.gov/nass/](http://www.usda.gov/nass/), click on **Publications**, then click on the **Subscribe by E-mail** button which takes you to the page describing e-mail delivery of reports. Finally, click on **Go to the Subscription Page** and follow the instructions.

-----

### **PRINTED REPORTS OR DATA PRODUCTS**

**CALL OUR TOLL-FREE ORDER DESK: 800-999-6779 (U.S. and Canada)**  
**Other areas, please call 703-605-6220      FAX: 703-605-6900**  
**(Visa, MasterCard, check, or money order acceptable for payment.)**

-----

### **ASSISTANCE**

For **assistance** with general agricultural statistics or further information about NASS or its products or services, contact the **Agricultural Statistics Hotline** at **800-727-9540**, 7:30 a.m. to 4:00 p.m. ET, or e-mail: [nass@nass.usda.gov](mailto:nass@nass.usda.gov).

---