



Cold Storage

Released December 21, 2004, by the National Agricultural Statistics Service (NASS), Agricultural Statistics Board, U.S. Department of Agriculture. For information on *Cold Storage* call Perry Game at (202) 720-8784, office hours 7:00 a.m. to 3:30 p.m. ET.

Highlights

Frozen food stocks in refrigerated warehouses on November 30, 2004 were greater than year earlier levels for chicken, beef, eggs, orange juice and cheese.

Butter stocks were down 45 percent from last month and down 52 percent from a year ago.

Total red meat supplies in freezers were up 1 percent from last month and up 9 percent from last year. Frozen pork supplies were up 1 percent from last month, but down 2 percent from the previous year. Stocks of pork bellies were up 113 percent from last month and up 3 percent from last year.

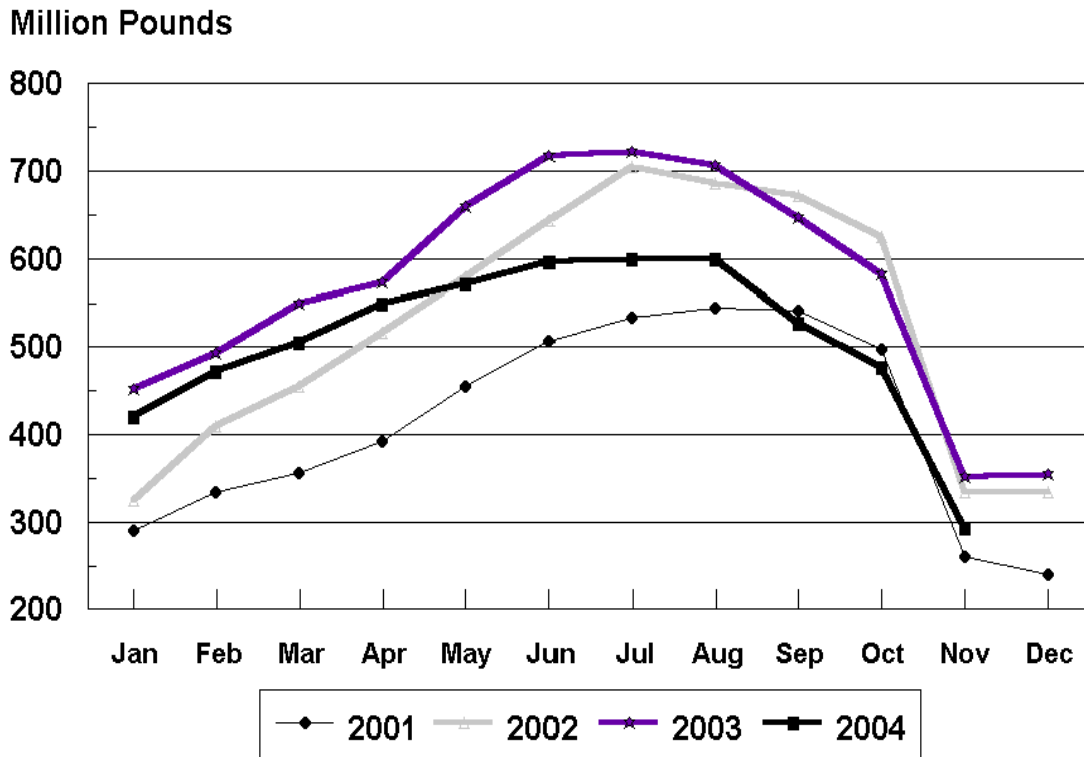
Total frozen poultry supplies on November 30, 2004 were 17 percent below the previous month, but 15 percent above a year ago. Total stocks of chicken were down 4 percent from the previous month, but up 35 percent from last year. Total pounds of turkey in freezers were down 38 percent from last month and down 16 percent from November 30, 2003.

This page is intentionally blank.

Contents

	Page
Stocks in Cold Storage: By Commodity, United States, November 2004	4
Stocks in Cold Storage: By Commodity, Region, and United States, October 31, 2004	8
Stocks in Cold Storage: By Commodity, Region, and United States, November 30, 2004	12
Public General Warehouses: Cold Storage Space Occupied by Region and United States, November 2004	16
Apples in Cold Storage: By State and United States, November 30, 2004 and 2003	17
Survey and Estimating Procedures, Revision Policy and Reliability	18
Access to Reports	19

Total Frozen Turkeys-United States Cold Storage Stocks, 2001-2004



**Stocks in Cold Storage: By Commodity,
United States, November 2004**

Commodity	Stocks in All Warehouses			Percent of		Public Warehouse Stocks
	Nov 30, 2003	Oct 31, 2004	Nov 30, 2004	Nov 2003	Oct 2004	Nov 30, 2004
	<i>1,000 Pounds</i>	<i>1,000 Pounds</i>	<i>1,000 Pounds</i>	<i>Percent</i>	<i>Percent</i>	<i>1,000 Lbs</i>
Apples						
Regular Storage	930,976	1,595,369	1,208,382	130	76	
Controlled Atmosphere	3,897,469	4,695,285	4,747,028	122	101	
Total	4,828,445	6,290,654	5,955,410	123	95	2,245
Pears						
Bartlett	45,648	53,753	23,506	51	44	
Other Varieties	381,145	421,380	343,681	90	82	
Total	426,793	475,133	367,187	86	77	672
Nuts						
Shelled						
Peanuts	192,444	230,565	251,465	131	109	
Pecans	16,347	20,077	19,106	117	95	
Other Shelled	113,896	90,438	93,799	82	104	
Total	322,687	341,080	364,370	113	107	151,453
In-Shell						
Peanuts	14,972	11,176	15,108	101	135	
Pecans	50,627	27,460	47,990	95	175	
Other In-Shell	9,727	11,099	8,474	87	76	
Total	75,326	49,735	71,572	95	144	22,351
Dairy Products						
Butter, Total	122,544	107,152	59,363	48	55	51,076
(Government Owned)	8,701	91	143	2	157	
Natural Cheese						
American, Total	467,226	527,486	483,553	103	92	
(Government Owned)	6,918	6,868	4,947	72	72	
Swiss	24,083	26,082	27,326	113	105	
Other Natural Cheese	204,232	202,603	196,098	96	97	
Total	695,541	756,171	706,977	102	93	390,475
Eggs, Frozen						
Whites	2,654	2,888	2,955	111	102	
Yolks	843	1,321	1,028	122	78	
Whole & Mixed	8,290	10,052	10,129	122	101	
Unclassified	3,122	3,616	3,123	100	86	
Total	14,909	17,877	17,235	116	96	16,749
Frozen Poultry						
Chicken						
Broilers, Fryers						
Roasters (Whole)	23,657	25,783	20,737	88	80	
Hens, Mature Chickens	3,672	3,862	3,711	101	96	
Breasts & Breast Meat	100,207	135,275	149,740	149	111	
Drumsticks	9,741	14,860	17,350	178	117	
Leg Quarters	65,006	116,900	103,379	159	88	
Legs	10,100	9,227	9,239	91	100	
Thigh & Thigh Quarters	5,340	15,425	12,465	233	81	
Thigh Meat	18,872	15,142	14,896	79	98	
Wings	29,757	39,695	37,945	128	96	
Paws and Feet	7,792	16,608	17,245	221	104	
Other	295,124	409,176	382,143	129	93	
Total Chicken	569,268	801,953	768,850	135	96	

See footnote(s) at end of table.

--continued

**Stocks in Cold Storage: By Commodity,
United States, November 2004**

Commodity	Stocks in All Warehouses			Percent of		Public Warehouse Stocks
	Nov 30, 2003	Oct 31, 2004	Nov 30, 2004	Nov 2003	Oct 2004	Nov 30, 2004
	<i>1,000 Pounds</i>	<i>1,000 Pounds</i>	<i>1,000 Pounds</i>	<i>Percent</i>	<i>Percent</i>	<i>1,000 Lbs</i>
Turkeys						
Toms (Whole Carcasses)	77,054	157,066	66,495	86	42	
Hens (Whole Carcasses)	54,266	95,532	49,376	91	52	
Whole Turkeys	131,320	252,598	115,871	88	46	
Other Turkey	219,348	225,619	178,285	81	79	
Total Turkey	350,668	478,217	294,156	84	62	224,468
Ducks	1,831	823	580	32	70	
Total Poultry	921,767	1,280,993	1,063,586	115	83	946,910
Frozen Fruit						
Apples	25,727	28,211	33,515	130	119	
Apricots	7,471	8,033	7,319	98	91	
Blackberries, Total	26,081	35,970	33,453	128	93	
IQF	18,733	24,310	23,122	123	95	
Pails and Tubs	1,933	4,303	4,153	215	97	
Barrels, 400 lbs net	3,919	7,078	5,619	143	79	
Concentrate	1,496	279	559	37	200	
Blueberries	84,355	103,575	93,744	111	91	
Boysenberries	1,231	1,798	1,531	124	85	
Cherries, Tart (RTP)	76,485	92,953	81,833	107	88	
Cherries, Tart (Juice)	1,868	1,837	1,223	65	67	
Cherries, Sweet	7,426	9,327	9,071	122	97	
Grapes	11,021	9,794	8,625	78	88	
Peaches	76,421	86,544	77,848	102	90	
Raspberries, Black	1,287	1,311	1,282	100	98	
Raspberries, Red, Total	46,984	53,502	48,631	104	91	
IQF	21,513	22,520	19,242	89	85	
Pails and Tubs	11,070	11,835	11,641	105	98	
Barrels, 400 lbs net	13,002	18,380	16,847	130	92	
Concentrate	1,399	767	901	64	117	
Strawberries, Total	287,290	356,214	319,785	111	90	
IQF and Poly	134,089	184,867	159,252	119	86	
Pails and Tubs	102,435	106,447	101,253	99	95	
Barrels and Drums	40,004	50,222	46,397	116	92	
Juice Stock	10,762	14,678	12,883	120	88	
Other Frozen Fruit	453,406	398,666	379,872	84	95	
Total	1,107,053	1,187,735	1,097,732	99	92	936,947
Frozen Juice						
Orange Juice Conc. ¹	1,428,515	1,603,185	1,486,383	104	93	
(Gallon Equivalent)	144,353	162,003	150,200			
Other Juice Concentrate	303,581	296,157	275,969	91	93	
Total	1,732,096	1,899,342	1,762,352	102	93	214,502

See footnote(s) at end of table.

--continued

**Stocks in Cold Storage: By Commodity,
United States, November 2004**

Commodity	Stocks in All Warehouses			Percent of		Public Warehouse Stocks
	Nov 30, 2003	Oct 31, 2004	Nov 30, 2004	Nov 2003	Oct 2004	Nov 30, 2004
	<i>1,000 Pounds</i>	<i>1,000 Pounds</i>	<i>1,000 Pounds</i>	<i>Percent</i>	<i>Percent</i>	<i>1,000 Lbs</i>
Frozen Vegetables						
Asparagus	8,052	10,933	7,560	94	69	
Limas, Fordhook	7,214	10,986	9,700	134	88	
Limas, Baby	54,778	56,332	51,304	94	91	
Green Beans, Reg. Cut	150,335	227,285	195,507	130	86	
Green Beans, Fr. Style	26,847	30,817	26,653	99	86	
Broccoli, Spears	35,759	39,412	31,378	88	80	
Broccoli, Chopped & Cut	58,137	58,453	54,104	93	93	
Brussels Sprouts	14,178	11,397	17,542	124	154	
Carrots, Diced	94,684	89,767	120,772	128	135	
Carrots, Other	178,395	137,916	146,656	82	106	
Cauliflower	28,531	25,736	32,371	113	126	
Corn, Cut	545,509	620,278	577,023	106	93	
Corn, Cob	359,830	303,479	276,546	77	91	
Mixed Vegetables	49,045	53,409	45,823	93	86	
Okra	42,508	42,607	38,330	90	90	
Onion Rings	7,395	7,120	6,644	90	93	
Onions, Other	32,072	31,303	32,944	103	105	
Blackeye Peas	3,370	2,713	3,297	98	122	
Green Peas	211,598	300,412	261,756	124	87	
Peas & Carrots Mixed	8,975	5,758	4,994	56	87	
Spinach	54,928	47,622	38,752	71	81	
Squash, Summer/Zucchini	47,649	51,968	51,741	109	100	
Southern Greens	15,741	14,047	16,174	103	115	
Other Vegetables	359,474	394,183	357,507	99	91	
Total	2,395,004	2,573,933	2,405,078	100	93	1,929,343
Potatoes						
French Fries	968,108	1,000,589	961,439	99	96	
Other Frozen	264,709	275,163	260,506	98	95	
Total	1,232,817	1,275,752	1,221,945	99	96	938,529

See footnote(s) at end of table.

--continued

**Stocks in Cold Storage: By Commodity,
United States, November 2004 (Continued)**

Commodity	Stocks in All Warehouses			Percent of		Public Warehouse Stocks
	Nov 30, 2003	Oct 31, 2004	Nov 30, 2004	Nov 2003	Oct 2004	Nov 30, 2004
	<i>1,000 Pounds</i>	<i>1,000 Pounds</i>	<i>1,000 Pounds</i>	<i>Percent</i>	<i>Percent</i>	<i>1,000 Lbs</i>
Meat						
Frozen Beef						
Boneless ²	322,767	404,923	402,694	125	99	
Beef Cuts ³	51,003	47,666	53,245	104	112	
Total	373,770	452,589	455,939	122	101	455,529
(Government Owned)	7,789	5,173	6,673	86	129	
Frozen Pork						
Picnics, Bone-in	11,377	16,505	11,434	101	69	
Hams, Total	73,608	96,792	63,050	86	65	98,124
Bone-in	44,178	59,333	38,194	86	64	59,613
Boneless ⁴	29,430	37,459	24,856	84	66	38,511
Bellies	33,073	15,970	34,002	103	213	
Loins, Total	40,124	34,932	41,541	104	119	31,760
Bone-in	20,678	19,917	22,284	108	112	
Boneless ⁵	19,446	15,015	19,257	99	128	
Ribs ⁶	64,977	57,674	80,785	124	140	
Butts	11,285	7,174	10,010	89	140	
Trimmings ⁷	38,332	26,335	24,745	65	94	
Other ⁸	69,813	78,741	78,697	113	100	
Variety Meats ⁹	42,107	45,198	38,344	91	85	
Unclassified ¹⁰	54,244	47,454	48,496	89	102	
Total	438,940	426,775	431,104	98	101	399,925
(Government Owned)	1,930	1,366	832	43	61	
Other						
Veal	4,968	3,768	3,616	73	96	
Lamb & Mutton	4,883	4,166	3,715	76	89	
Total	9,851	7,934	7,331	74	92	7,918
Canned						
Canned Hams	4,727	4,350	4,360	92	100	
Other Canned Meat	778	1,298	1,282	165	99	
Total	5,505	5,648	5,642	102	100	5,555
Total	828,066	892,946	900,016	109	101	868,927
Miscellaneous						
Cooler	1,084,307	927,559	848,057	78	91	393,140
Freezer	2,116,616	2,113,429	1,921,720	91	91	1,867,425
Total	3,200,923	3,040,988	2,769,777	87	91	2,260,565
Commodities						
Stored in Coolers	7,446,125	8,859,004	8,329,417	112	94	1,208,817
Stored in Freezers	10,457,846	11,330,487	10,433,183	100	92	8,390,242
Total	17,903,971	20,189,491	18,762,600	105	93	9,599,059

¹ Adjusted to 42.0 degrees Brix equivalent (9.896 pounds per gallon).

² Includes all boxed boneless beef, such as ground beef, roasts, steaks, loins, strips, rounds, trimmings, etc. Variety meats (edible offal), such as tongues, livers, hearts, kidneys, and other organs removed from slaughtered beef, are included as miscellaneous freezer stocks.

³ Includes all boxed primal beef cuts, bone-in.

⁴ Includes full ham, bone removed and individual muscles separated.

⁵ Includes pork tenderloins.

⁶ Includes spareribs and backribs.

⁷ Includes 42% regular trimmings, 72% special trimmings, boneless picnic meat, jowls, neckbone trimmings, blade, cheek, head, and shank meat, etc. Packaged bacon, sausage, and processed items, such as hot dogs and luncheon meats, are included in miscellaneous cooler or freezer stocks.

⁸ Includes ears, tails, feet, neckbones and snouts.

⁹ Includes tongues, kidneys, livers, stomachs, hearts, chitterlings, salivary glands, and other organs removed from slaughtered hogs.

¹⁰ Includes product unable to be classified elsewhere in this report.

**Stocks in Cold Storage: By Commodity, Region,
and United States, October 31, 2004**

Commodity	New England	Middle Atlantic	East North Central	West North Central	South Atlantic
	<i>1,000 Pounds</i>	<i>1,000 Pounds</i>	<i>1,000 Pounds</i>	<i>1,000 Pounds</i>	<i>1,000 Pounds</i>
Total Fresh Apples	47,809	632,863	376,622	5,354	279,023
Nuts					
Shelled					
Peanuts		216	16	14	174,742
Pecans ¹	138	77			5,532
In-Shell					
Pecans ¹					3,350
Dairy Products					
Natural Cheese					
American, Total	22,854	60,314	205,550	116,941	5,074
Other Natural Cheese	424	11,157	116,645	56,008	146
Frozen Poultry					
Chicken					
Broilers, Fryers					
Roasters (Whole)		1,908	259	796	5,476
Hens, Mature Chickens	27	226	175	285	1,237
Other	1,241	17,668	17,429	37,554	293,804
Total Chicken	1,268	19,802	17,863	38,635	300,517
Turkeys					
Whole Turkeys	4,372	25,285	14,434	38,015	69,878
Other Turkey	1,539	14,652	17,735	45,942	90,414
Total Turkey	5,911	39,937	32,169	83,957	160,292
Ducks		220	351	10	50
Total Poultry	7,179	59,959	50,383	122,602	460,859
Frozen Fruit					
Apples	16	10,128	8,990	41	443
Blueberries	11,373	8,725	43,817	1,515	4,508
Cherries, Tart (RTP)	2	5,307	76,405	87	1,557
Cherries, Sweet	1	134	3,817	616	3
Peaches	83	2,443	10,920	3,360	594
Raspberries, Red	2	1,365	1,404	403	223
Strawberries, Total	24	6,877	8,650	1,457	3,765
Other Frozen Fruit	1,023	12,481	237,415	3,291	3,194

See footnote(s) at end of table.

--continued

**Stocks in Cold Storage: By Commodity, Region,
and United States, October 31, 2004 (continued)**

Commodity	East South Central	West South Central	Mountain	Pacific	US Total
	<i>1,000 Pounds</i>	<i>1,000 Pounds</i>	<i>1,000 Pounds</i>	<i>1,000 Pounds</i>	<i>1,000 Pounds</i>
Total Fresh Apples	99	10,000	79,270	4,859,614	6,290,654
Nuts					
Shelled					
Peanuts	19,661	35,721	74	121	230,565
Pecans ¹	323	13,935		72	20,077
In-Shell					
Pecans ¹	118	23,992			27,460
Dairy Products					
Natural Cheese					
American, Total	308	2,005	26,274	88,166	527,486
Other Natural Cheese	2,228	104	6,131	9,760	202,603
Frozen Poultry					
Chicken					
Broilers, Fryers					
Roasters (Whole)	4,568	9,650	323	2,803	25,783
Hens, Mature Chickens	2	719	4	1,187	3,862
Other	153,952	213,552	2,008	35,100	772,308
Total Chicken	158,522	223,921	2,335	39,090	801,953
Turkeys					
Whole Turkeys	3,311	58,477	18,472	20,354	252,598
Other Turkey	3,266	20,042	11,152	20,877	225,619
Total Turkey	6,577	78,519	29,624	41,231	478,217
Ducks	13	75	61	43	823
Total Poultry	165,112	302,515	32,020	80,364	1,280,993
Frozen Fruit					
Apples	9	593	39	7,952	28,211
Blueberries	173	898	70	32,496	103,575
Cherries, Tart (RTP)		176	1,750	7,669	92,953
Cherries, Sweet	1	61	882	3,812	9,327
Peaches	39	1,307	65	67,733	86,544
Raspberries, Red	88	143	8	49,866	53,502
Strawberries, Total	1,075	25,562	137	308,667	356,214
Other Frozen Fruit	254	10,809	1,665	128,534	398,666

See footnote(s) at end of table.

--continued

**Stocks in Cold Storage: By Commodity, Region,
and United States, October 31, 2004 (continued)**

Commodity	New England	Middle Atlantic	East North Central	West North Central	South Atlantic
	<i>1,000 Pounds</i>	<i>1,000 Pounds</i>	<i>1,000 Pounds</i>	<i>1,000 Pounds</i>	<i>1,000 Pounds</i>
Frozen Juice					
Orange Juice Conc. ²	24		1,132	286	1,542,922
Other Juice Concentrate	7,664	45,603	13,159	1,724	104,061
Frozen Vegetables ³					
Asparagus		724	6,975	57	117
Limas, Fordhook		3,049	1,516		668
Limas, Baby		8,563	2,551		11,344
Green Beans, Reg. Cut		33,778	55,834	1,297	20,058
Green Beans, Fr. Style		9,523	9,703	328	1,858
Broccoli, Spears		7,246	4,398		3,295
Broccoli, Chopped & Cut		6,383	6,397	2,364	6,599
Brussels Sprouts		988	1,121	1	2,586
Carrots, Diced		4,418	15,367	235	7,191
Carrots, Other		14,850	18,131	517	6,840
Cauliflower		1,787	2,793	107	1,217
Corn, Cut		60,062	85,007	41,646	26,756
Corn, Cob		20,116	35,271	23,207	12,594
Mixed Vegetables		5,993	8,967	108	2,676
Okra		1,573	367		4,817
Onion Rings		315	2,731	1,078	1,313
Onions, Other		3,991	3,727	280	2,591
Blackeye Peas		305	57		1,301
Green Peas		43,032	34,858	13,997	9,635
Peas & Carrots Mixed		1,444	1,175	1	427
Spinach		8,760	3,241	80	2,894
Squash, Summer/Zucchini		3,239	13,103		4,348
Southern Greens		1,248	264	1	2,359
Other Vegetables		47,267	56,502	12,660	23,570
Potatoes					
French Fries	33,030	23,237	62,190	124,706	31,795
Other Frozen	6,062	10,283	30,444	8,038	4,788
Meat					
Frozen Beef					
Boneless ⁴	1,159	48,122	51,765	121,351	37,834
Beef Cuts ⁵	131	2,601	7,465	8,580	2,458
Frozen Pork					
Ribs ⁶	210	1,062	12,691	26,670	8,328
Trimming ⁷		182	7,209	14,045	1,591
Other ⁸	1,522	654	10,418	45,181	14,701
Other					
Veal		898	685	101	66
Lamb & Mutton		608	1,043	66	207

See footnote(s) at end of table.

--continued

**Stocks in Cold Storage: By Commodity, Region,
and United States, October 31, 2004 (continued)**

Commodity	East South Central	West South Central	Mountain	Pacific	US Total
	<i>1,000 Pounds</i>	<i>1,000 Pounds</i>	<i>1,000 Pounds</i>	<i>1,000 Pounds</i>	<i>1,000 Pounds</i>
Frozen Juice					
Orange Juice Concentrate	30	2,095	163	56,533	1,603,185
Other Juice Concentrate	121	15,496	1,313	107,016	296,157
Frozen Vegetables ³					
Asparagus		334	11	2,715	10,933
Limas, Fordhook		125	6	5,622	10,986
Limas, Baby		947	2,776	30,151	56,332
Green Beans, Reg. Cut		1,091	170	115,057	227,285
Green Beans, Fr. Style		218	36	9,151	30,817
Broccoli, Spears		15,810	780	7,883	39,412
Broccoli, Chopped & Cut		16,860	324	19,526	58,453
Brussels Sprouts		204		6,497	11,397
Carrots, Diced		1,504	116	60,936	89,767
Carrots, Other		6,307	867	90,404	137,916
Cauliflower		3,189	16	16,627	25,736
Corn, Cut		2,983	6,055	397,769	620,278
Corn, Cob		884	11,387	200,020	303,479
Mixed Vegetables		7,398	14	28,253	53,409
Okra		35,127		723	42,607
Onion Rings		542	501	640	7,120
Onions, Other		1,772	2,387	16,555	31,303
Blackeye Peas		793		257	2,713
Green Peas		3,055	11,929	183,906	300,412
Peas & Carrots Mixed		232	36	2,443	5,758
Spinach		4,722	74	27,851	47,622
Squash, Summer/Zucchini		6,217	801	24,260	51,968
Southern Greens		8,024		2,151	14,047
Other Vegetables		30,908	7,018	216,258	394,183
Potatoes					
French Fries	11,922	12,872	237,381	463,456	1,000,589
Other Frozen	1,398	28,445	60,522	125,183	275,163
Meat					
Frozen Beef					
Boneless ⁴	4,683	77,384	6,489	56,136	404,923
Beef Cuts ⁵	1,622	7,279	7,903	9,627	47,666
Frozen Pork					
Ribs ⁶	2,926	3,067	209	2,511	57,674
Trimming ⁷	338	2,634	32	304	26,335
Other ⁸	2,549	1,899	239	1,578	78,741
Other					
Veal	5	129		1,884	3,768
Lamb & Mutton		269	71	1,902	4,166

¹ East North Central combined with South Atlantic. Mountain and West North Central combined with West South Central.

² Middle Atlantic combined with South Atlantic.

³ New England combined with Middle Atlantic. East South Central combined with South Atlantic.

⁴ Includes all boxed boneless beef, such as ground beef, roasts, steaks, loins, strips, rounds, trimmings, etc. Variety meats (edible offal), such as tongues, livers, hearts, kidneys, and other organs removed from slaughtered beef, are included as miscellaneous freezer stocks.

⁵ Includes all boxed primal beef cuts, bone-in.

⁶ Includes spareribs and backribs.

⁷ Includes 42% regular trimmings, 72% special trimmings, boneless picnic meat, jowls, neckbone trimmings, blade, cheek, head, and shank meat, etc. Packaged bacon, sausage, and processed items, such as hot dogs and luncheon meats, are included in miscellaneous cooler or freezer stocks.

⁸ Includes ears, tails, feet, neckbones and snouts.

**Stocks in Cold Storage: By Commodity, Region,
and United States, November 30, 2004**

Commodity	New England	Middle Atlantic	East North Central	West North Central	South Atlantic
	<i>1,000 Pounds</i>	<i>1,000 Pounds</i>	<i>1,000 Pounds</i>	<i>1,000 Pounds</i>	<i>1,000 Pounds</i>
Total Fresh Apples	36,637	578,285	400,900	3,365	268,729
Nuts					
Shelled					
Peanuts		1	18	15	188,757
Pecans ¹	148	99			6,002
In-Shell					
Pecans ¹					7,979
Dairy Products					
Natural Cheese					
American, Total	22,401	54,791	187,236	108,284	3,596
Other Natural Cheese	288	10,250	113,955	55,003	115
Frozen Poultry					
Chicken					
Broilers, Fryers					
Roasters (Whole)	1	1,525	204	707	4,156
Hens, Mature Chickens	24	187	124	225	1,142
Other	1,080	17,381	17,792	39,171	276,202
Total Chicken	1,105	19,093	18,120	40,103	281,500
Turkeys					
Whole Turkeys	202	7,935	4,744	19,991	33,426
Other Turkey	356	8,247	15,027	39,777	69,210
Total Turkey	558	16,182	19,771	59,768	102,636
Ducks		140	217		27
Total Poultry	1,663	35,415	38,108	99,871	384,163
Frozen Fruit					
Apples	23	12,011	11,917	30	568
Blueberries	11,547	7,821	39,609	1,112	3,947
Cherries, Tart (RTP)	1	4,747	66,490	79	1,355
Cherries, Sweet	1	184	3,723	572	16
Peaches	100	2,802	9,773	3,193	578
Raspberries, Red	2	1,135	1,374	269	204
Strawberries, Total	24	6,100	9,977	1,359	3,323
Other Frozen Fruit	945	11,587	223,901	3,483	3,229

See footnote(s) at end of table.

--continued

**Stocks in Cold Storage: By Commodity, Region,
and United States, November 30, 2004 (continued)**

Commodity	East South Central	West South Central	Mountain	Pacific	US Total
	<i>1,000 Pounds</i>	<i>1,000 Pounds</i>	<i>1,000 Pounds</i>	<i>1,000 Pounds</i>	<i>1,000 Pounds</i>
Total Fresh Apples	60	9,652	71,223	4,586,559	5,955,410
Nuts					
Shelled					
Peanuts	21,620	40,835	87	132	251,465
Pecans ¹	258	12,529		70	19,106
In-Shell					
Pecans ¹	579	39,432			47,990
Dairy Products					
Natural Cheese					
American, Total	297	1,791	26,063	79,094	483,553
Other Natural Cheese	2,143	90	4,867	9,387	196,098
Frozen Poultry					
Chicken					
Broilers, Fryers					
Roasters (Whole)	3,432	8,374	270	2,068	20,737
Hens, Mature Chickens	14	707	120	1,168	3,711
Other	138,348	216,055	2,454	35,919	744,402
Total Chicken	141,794	225,136	2,844	39,155	768,850
Turkeys					
Whole Turkeys	1,426	29,523	10,469	8,155	115,871
Other Turkey	1,113	14,373	10,058	20,124	178,285
Total Turkey	2,539	43,896	20,527	28,279	294,156
Ducks	9	50	63	74	580
Total Poultry	144,342	269,082	23,434	67,508	1,063,586
Frozen Fruit					
Apples	9	518	49	8,390	33,515
Blueberries	158	794	62	28,694	93,744
Cherries, Tart (RTP)		138	1,522	7,501	81,833
Cherries, Sweet	1	76	824	3,674	9,071
Peaches	35	1,206	106	60,055	77,848
Raspberries, Red	80	105	8	45,454	48,631
Strawberries, Total	943	21,921	112	276,026	319,785
Other Frozen Fruit	243	11,225	1,807	123,452	379,872

See footnote(s) at end of table.

--continued

**Stocks in Cold Storage: By Commodity, Region,
and United States, November 30, 2004 (continued)**

Commodity	New England	Middle Atlantic	East North Central	West North Central	South Atlantic
	<i>1,000 Pounds</i>	<i>1,000 Pounds</i>	<i>1,000 Pounds</i>	<i>1,000 Pounds</i>	<i>1,000 Pounds</i>
Frozen Juice					
Orange Juice Conc. ²	23		1,186	304	1,428,233
Other Juice Concentrate	8,871	32,117	13,095	1,403	103,590
Frozen Vegetables ³					
Asparagus		714	3,734	55	95
Limas, Fordhook		2,816	1,185		598
Limas, Baby		8,149	2,119		10,405
Green Beans, Reg. Cut		28,226	44,694	1,133	17,276
Green Beans, Fr. Style		8,158	8,412	435	1,666
Broccoli, Spears		6,437	3,572	1	2,898
Broccoli, Chopped & Cut		5,777	5,372	1,948	6,077
Brussels Sprouts		1,528	1,188	1	2,713
Carrots, Diced		8,085	25,123	317	8,941
Carrots, Other		19,305	23,814	460	6,964
Cauliflower		3,077	2,720	147	1,361
Corn, Cut		51,579	77,824	36,651	24,931
Corn, Cob		17,790	32,357	21,429	10,886
Mixed Vegetables		5,024	7,120	35	2,537
Okra		1,434	402		4,607
Onion Rings		316	2,320	808	1,173
Onions, Other		3,874	3,556	247	2,226
Blackeye Peas		336	33		1,242
Green Peas		35,370	29,891	12,867	8,344
Peas & Carrots Mixed		1,211	991	1	429
Spinach		7,525	2,496	40	2,603
Squash, Summer/Zucchini		3,731	11,809		4,475
Southern Greens		1,487	226	1	2,415
Other Vegetables		44,739	52,138	12,307	20,929
Potatoes					
French Fries	32,892	24,441	59,430	100,963	34,408
Other Frozen	4,894	10,525	31,204	6,486	4,048
Meat					
Frozen Beef					
Boneless ⁴	1,161	45,495	54,093	121,149	35,419
Beef Cuts ⁵	124	2,957	6,676	9,069	2,627
Frozen Pork					
Ribs ⁶	289	1,236	18,727	36,380	13,737
Trimming ⁷		188	6,009	13,438	1,760
Other ⁸	1,515	670	9,641	46,782	13,947
Other					
Veal		942	573	97	61
Lamb & Mutton		461	1,011	31	143

See footnote(s) at end of table.

--continued

**Stocks in Cold Storage: By Commodity, Region,
and United States, November 30, 2004 (continued)**

Commodity	East South Central	West South Central	Mountain	Pacific	US Total
	<i>1,000 Pounds</i>	<i>1,000 Pounds</i>	<i>1,000 Pounds</i>	<i>1,000 Pounds</i>	<i>1,000 Pounds</i>
Frozen Juice					
Orange Juice Concentrate	29	1,915	478	54,215	1,486,383
Other Juice Concentrate	113	15,565	1,429	99,786	275,969
Frozen Vegetables ³					
Asparagus		256	42	2,664	7,560
Limás, Fordhook		143	6	4,952	9,700
Limás, Baby		1,196	2,564	26,871	51,304
Green Beans, Reg. Cut		1,010	395	102,773	195,507
Green Beans, Fr. Style		172	23	7,787	26,653
Broccoli, Spears		10,378	118	7,974	31,378
Broccoli, Chopped & Cut		15,804	382	18,744	54,104
Brussels Sprouts		250		11,862	17,542
Carrots, Diced		1,441	217	76,648	120,772
Carrots, Other		5,822	700	89,591	146,656
Cauliflower		4,910	142	20,014	32,371
Corn, Cut		2,398	4,697	378,943	577,023
Corn, Cob		787	7,950	185,347	276,546
Mixed Vegetables		5,811	13	25,283	45,823
Okra		31,204		683	38,330
Onion Rings		1,110	293	624	6,644
Onions, Other		1,928	3,887	17,226	32,944
Blackeye Peas		1,208		478	3,297
Green Peas		2,864	11,804	160,616	261,756
Peas & Carrots Mixed		388	10	1,964	4,994
Spinach		4,366	20	21,702	38,752
Squash, Summer/Zucchini		6,326	713	24,687	51,741
Southern Greens		9,709		2,336	16,174
Other Vegetables		29,477	8,358	189,559	357,507
Potatoes					
French Fries	10,804	13,892	229,855	454,754	961,439
Other Frozen	1,296	27,893	55,899	118,261	260,506
Meat					
Frozen Beef					
Boneless ⁴	5,920	77,850	8,670	52,937	402,694
Beef Cuts ⁵	1,704	8,767	11,564	9,757	53,245
Frozen Pork					
Ribs ⁶	2,928	3,471	285	3,732	80,785
Trimming ⁷	294	2,704	30	322	24,745
Other ⁸	2,433	2,093	289	1,327	78,697
Other					
Veal	4	164		1,775	3,616
Lamb & Mutton		320	48	1,701	3,715

¹ East North Central combined with South Atlantic. Mountain and West North Central Combined with West South Central.

² Middle Atlantic combined with South Atlantic.

³ New England combined with Middle Atlantic. East South Central combined with South Atlantic.

⁴ Includes all boxed boneless beef, such as ground beef, roasts, steaks, loins, strips, rounds, trimmings, etc. Variety meats (edible offal), such as tongues, livers, hearts, kidneys, and other organs removed from slaughtered beef, are included as miscellaneous freezer stocks.

⁵ Includes all boxed primal beef cuts, bone-in.

⁶ Includes spareribs and backribs.

⁷ Includes 42% regular trimmings, 72% special trimmings, boneless picnic meat, jowls, neckbone trimmings, blade, cheek, head, and shank meat, etc. Packaged bacon, sausage, and processed items, such as hot dogs and luncheon meats, are included in miscellaneous cooler or freezer stocks.

⁸ Includes ears, tails, feet, neckbones and snouts.

**Public General Warehouses: Cold Storage Space Occupied
by Region and United States, November 2004**

Region	Cooler				Freezer			
	Usable Space	Usable Space Occupied			Usable Space	Usable Space Occupied		
	Nov 30 2004	Nov 30 2003	Oct 31 2004	Nov 30 2004	Nov 30 2004	Nov 30 2003	Oct 31 2004	Nov 30 2004
	<i>1,000 Cu Ft</i>	<i>Percent</i>	<i>Percent</i>	<i>Percent</i>	<i>1,000 Cu Ft</i>	<i>Percent</i>	<i>Percent</i>	<i>Percent</i>
New England	1,741	78	82	80	15,747	81	85	80
Middle Atlantic	46,915	61	62	60	136,368	55	65	64
E. North Central	58,771	54	60	57	218,794	55	61	56
W. North Central	46,636	39	54	53	158,469	51	67	64
South Atlantic	51,288	26	47	47	199,450	50	60	56
E. South Central	9,789	45	62	55	70,972	42	50	45
W. South Central	29,130	23	25	24	139,558	43	53	50
Mountain	12,154	40	55	50	61,416	67	70	69
Pacific	56,387	43	48	45	322,327	72	71	70
US	312,811	43	52	50	1,323,101	57	64	61

Cold Storage Regions



**Apples in Cold Storage: By State
and United States, November 2004**

State	All Warehouses		
	Nov 30, 2003	Oct 31, 2004	Nov 30 2004
	<i>1,000 Pounds</i>	<i>1,000 Pounds</i>	
CA	73,011	85,188	69,777
MI	389,636	336,351	370,491
N ENG	40,427	47,809	36,637
NY	320,964	352,590	318,276
OH	15,360	23,250	18,290
OR	33,305	74,426	49,494
PA	274,832	280,000	260,000
VA	140,958	150,554	156,059
WA	3,362,856	4,700,000	4,467,288
WV	81,208	82,991	82,792
Other States	95,888	157,495	126,306
US	4,828,445	6,290,654	5,955,410

Survey Procedures: Questionnaires are mailed about the 24th of each month to all operators on the list of approximately 1,400 public and private cold storage warehouses. In addition, apple data are obtained from special surveys and other sources (State Departments of Agriculture, U.S. Apple Association, etc.). All survey data represent stocks as of the end of the month.

Data are collected from warehouses artificially cooled to a temperature of 50 degrees Fahrenheit or lower, and whose food products are normally stored for 30 days or more. All food items in these facilities are reported regardless of the number of days stored at the time of the report. Also included are specialized storage facilities meeting the 30 day requirement, such as fruit houses, dairy manufacturing plants, frozen fruit, fruit juice, and vegetable processors, and poultry and meat packing plants. Excluded are stocks in space maintained by wholesalers, jobbers, distributors, chain stores, locker plants containing individual lockers, meat packer branch houses, and frozen food processors whose entire inventories are turned over more than once a month.

Estimating Procedures: Data for reporting firms are added to estimates for non-reporting firms to obtain regional and National totals. Estimates for non-reporting firms are obtained by multiplying the previous month's figure by a percent change from the previous month. The percent change is calculated for each item from totals of the current and previous month summed from firms that reported both months.

Revision Policy: Data are revised the following month based on late reports or corrected data. Final figures are published in the annual summary in February of the following year.

Reliability: Reports are received from 900 firms each month which represent about 70 percent of the total capacity. Firms that are not on the list or firms who have never reported are not represented in the data. Monthly data can vary due to different firms reporting month to month. Survey data are also subject to non-sampling errors such as omissions and mistakes in reporting and in processing the data. While these errors cannot be measured directly, they are minimized by carefully reviewing all reported data for consistency and reasonableness.

The United States Department of Agriculture (USDA) prohibits discrimination in all its programs on the basis of race, color, national origin, gender, religion, age, disability, political beliefs, sexual orientation, and marital or family status. (Not all prohibited bases apply to all programs.) Persons with disabilities who require alternative means for communication of program information (braille, large print, audiotape, etc.) should contact the USDA's TARGET Center at 202-720-2600 (voice and TDD).

To file a complaint of discrimination, write USDA, Director, Office of Civil Rights, Room 326-W, Whitten Building, 1400 Independence Avenue, SW, Washington, D.C., 20250-9410, or call 202-720-5964 (voice or TDD). USDA is an equal opportunity provider and employer.

ACCESS TO REPORTS!!

For your convenience, there are several ways to obtain NASS reports, data products, and services:

INTERNET ACCESS

All NASS reports are available free of charge on the worldwide Internet. For access, connect to the Internet and go to the NASS Home Page at: www.usda.gov/nass/. Select "Today's Reports" or Publications and then Reports Calendar or Publications and then Search, by Title or Subject.

E-MAIL SUBSCRIPTION

All NASS reports are available by subscription free of charge direct to your e-mail address. Starting with the NASS Home Page at www.usda.gov/nass/, click on **Publications**, then click on the **Subscribe by E-mail** button which takes you to the page describing e-mail delivery of reports. Finally, click on **Go to the Subscription Page** and follow the instructions.

PRINTED REPORTS OR DATA PRODUCTS

CALL OUR TOLL-FREE ORDER DESK: 800-999-6779 (U.S. and Canada)
Other areas, please call 703-605-6220 FAX: 703-605-6900
(Visa, MasterCard, check, or money order acceptable for payment.)

ASSISTANCE

For **assistance** with general agricultural statistics or further information about NASS or its products or services, contact the **Agricultural Statistics Hotline** at **800-727-9540**, 7:30 a.m. to 4:00 p.m. ET, or e-mail: nass@nass.usda.gov.
