



Cold Storage

Released February 22, 2005, by the National Agricultural Statistics Service (NASS), Agricultural Statistics Board, U.S. Department of Agriculture. For information on *Cold Storage* call Perry Game at (202) 720-8784, office hours 7:00 a.m. to 3:30 p.m. ET.

Highlights

Frozen food stocks in refrigerated warehouses on January 31, 2005 were greater than year earlier levels for chicken, fruit, vegetables, and beef.

Butter stocks were up 69 percent from last month, but down 50 percent from a year ago.

Total red meat supplies in freezers were down 1 percent from last month, but up 1 percent from last year. Frozen pork supplies were up 3 percent from last month, but down 1 percent from the previous year. Stocks of pork bellies were up 13 percent from last month and up 1 percent from last year.

Total frozen poultry supplies on January 31, 2005 were 3 percent below the previous month, but 2 percent above a year ago. Total stocks of chicken were down 11 percent from the previous month, but up 19 percent from last year. Total pounds of turkey in freezers were up 18 percent from last month, but down 19 percent from January 31, 2004.

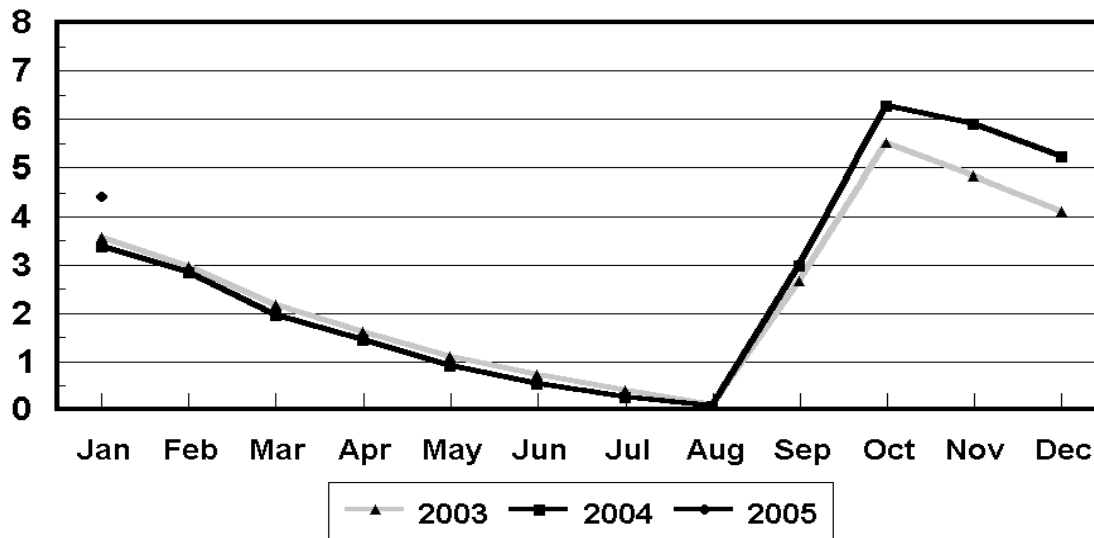
This page is intentionally blank.

Contents

| | Page |
|---|------|
| Stocks in Cold Storage: By Commodity, United States, January 2005 | 4 |
| Stocks in Cold Storage: By Commodity, United States, October-December 2004, Revised | 8 |
| Stocks in Cold Storage: By Commodity, Region, and United States, December 31, 2004 | 9 |
| Stocks in Cold Storage: By Commodity, Region, and United States, January 31, 2005 | 13 |
| Public General Warehouses: Cold Storage Space Occupied by Region and United States, January 2005 | 17 |
| Apples in Cold Storage: By State and United States, January 31, 2004 and 2003 | 18 |
| Survey and Estimating Procedures, Revision Policy and Reliability | 19 |
| Access to Reports | 20 |

Fresh Apples-United States Cold Storage Stocks, 2003- 2005

Billion Pounds



**Stocks in Cold Storage: By Commodity,
United States, January 2005**

| Commodity | Stocks in All Warehouses | | | Percent of | | Public Warehouse Stocks |
|------------------------|--------------------------|---------------------|---------------------|----------------|----------------|-------------------------|
| | Jan 31, 2004 | Dec 31, 2004 | Jan 31, 2005 | Jan 2004 | Dec 2004 | Jan 31, 2005 |
| | <i>1,000 Pounds</i> | <i>1,000 Pounds</i> | <i>1,000 Pounds</i> | <i>Percent</i> | <i>Percent</i> | <i>1,000 Lbs</i> |
| Apples | | | | | | |
| Regular Storage | 395,445 | 858,184 | 560,940 | 142 | 65 | |
| Controlled Atmosphere | 2,987,516 | 4,328,804 | 3,853,913 | 129 | 89 | |
| Total | 3,382,961 | 5,186,988 | 4,414,853 | 131 | 85 | 367 |
| Pears | | | | | | |
| Bartlett | 4,488 | 6,574 | 242 | 5 | 4 | |
| Other Varieties | 245,655 | 276,382 | 209,994 | 85 | 76 | |
| Total | 250,143 | 282,956 | 210,236 | 84 | 74 | 230 |
| Nuts | | | | | | |
| Shelled | | | | | | |
| Peanuts | 267,504 | 300,480 | 349,826 | 131 | 116 | |
| Pecans | 22,567 | 16,971 | 19,480 | 86 | 115 | |
| Other Shelled | 144,082 | 102,498 | 114,737 | 80 | 112 | |
| Total | 434,153 | 419,949 | 484,043 | 111 | 115 | 180,956 |
| In-Shell | | | | | | |
| Peanuts | 13,365 | 15,700 | 15,264 | 114 | 97 | |
| Pecans | 186,878 | 95,581 | 144,026 | 77 | 151 | |
| Other In-Shell | 10,029 | 8,524 | 8,477 | 85 | 99 | |
| Total | 210,272 | 119,805 | 167,767 | 80 | 140 | 44,339 |
| Dairy Products | | | | | | |
| Butter, Total | 152,448 | 44,988 | 76,111 | 50 | 169 | 67,412 |
| (Government Owned) | 1,258 | 118 | 108 | 9 | 92 | |
| Natural Cheese | | | | | | |
| American, Total | 518,113 | 481,077 | 484,378 | 93 | 101 | |
| (Government Owned) | 9,616 | 5,053 | 3,738 | 39 | 74 | |
| Swiss | 25,244 | 25,956 | 25,740 | 102 | 99 | |
| Other Natural Cheese | 213,575 | 198,757 | 201,551 | 94 | 101 | |
| Total | 756,932 | 705,790 | 711,669 | 94 | 101 | 377,719 |
| Eggs, Frozen | | | | | | |
| Whites | 2,870 | 2,972 | 2,860 | 100 | 96 | |
| Yolks | 1,149 | 1,085 | 975 | 85 | 90 | |
| Whole & Mixed | 12,423 | 11,443 | 11,715 | 94 | 102 | |
| Unclassified | 4,862 | 3,612 | 3,179 | 65 | 88 | |
| Total | 21,304 | 19,112 | 18,729 | 88 | 98 | 17,997 |
| Frozen Poultry | | | | | | |
| Chicken | | | | | | |
| Broilers, Fryers | | | | | | |
| Roasters (Whole) | 20,767 | 23,308 | 27,572 | 133 | 118 | |
| Hens, Mature Chickens | 4,182 | 2,924 | 2,710 | 65 | 93 | |
| Breasts & Breast Meat | 86,265 | 151,876 | 149,516 | 173 | 98 | |
| Drumsticks | 7,840 | 16,497 | 13,716 | 175 | 83 | |
| Leg Quarters | 72,439 | 76,091 | 52,548 | 73 | 69 | |
| Legs | 13,344 | 9,965 | 8,404 | 63 | 84 | |
| Thigh & Thigh Quarters | 5,751 | 11,733 | 8,987 | 156 | 77 | |
| Thigh Meat | 17,712 | 14,382 | 13,329 | 75 | 93 | |
| Wings | 18,800 | 32,429 | 34,788 | 185 | 107 | |
| Paws and Feet | 10,554 | 11,464 | 14,457 | 137 | 126 | |
| Other | 277,247 | 365,511 | 310,319 | 112 | 85 | |
| Total Chicken | 534,901 | 716,180 | 636,346 | 119 | 89 | |

See footnote(s) at end of table.

--continued

**Stocks in Cold Storage: By Commodity,
United States, January 2005**

| Commodity | Stocks in All Warehouses | | | Percent of | | Public Warehouse Stocks |
|---------------------------------|--------------------------|---------------------|---------------------|----------------|----------------|-------------------------|
| | Jan 31, 2004 | Dec 31, 2004 | Jan 31, 2005 | Jan 2004 | Dec 2004 | Jan 31, 2005 |
| | <i>1,000 Pounds</i> | <i>1,000 Pounds</i> | <i>1,000 Pounds</i> | <i>Percent</i> | <i>Percent</i> | <i>1,000 Lbs</i> |
| Turkeys | | | | | | |
| Toms (Whole Carcasses) | 107,811 | 62,988 | 79,072 | 73 | 126 | |
| Hens (Whole Carcasses) | 71,977 | 43,083 | 61,029 | 85 | 142 | |
| Whole Turkeys | 179,788 | 106,071 | 140,101 | 78 | 132 | |
| Other Turkey | 240,678 | 182,286 | 199,213 | 83 | 109 | |
| Total Turkey | 420,466 | 288,357 | 339,314 | 81 | 118 | 268,305 |
| Ducks | 1,484 | 663 | 394 | 27 | 59 | |
| Total Poultry | 956,851 | 1,005,200 | 976,054 | 102 | 97 | 864,931 |
| Frozen Fruit | | | | | | |
| Apples | 48,596 | 37,743 | 44,357 | 91 | 118 | |
| Apricots | 6,135 | 6,645 | 5,863 | 96 | 88 | |
| Blackberries, Total | 19,464 | 29,634 | 25,555 | 131 | 86 | |
| IQF | 13,754 | 20,834 | 18,238 | 133 | 88 | |
| Pails and Tubs | 1,574 | 3,760 | 3,245 | 206 | 86 | |
| Barrels, 400 lbs net | 2,889 | 4,391 | 3,599 | 125 | 82 | |
| Concentrate | 1,247 | 649 | 473 | 38 | 73 | |
| Blueberries | 69,985 | 85,109 | 77,679 | 111 | 91 | |
| Boysenberries | 1,307 | 1,276 | 1,348 | 103 | 106 | |
| Cherries, Tart (RTP) | 60,825 | 76,570 | 67,993 | 112 | 89 | |
| Cherries, Tart (Juice) | 1,308 | 1,259 | 1,316 | 101 | 105 | |
| Cherries, Sweet | 6,039 | 8,237 | 8,059 | 133 | 98 | |
| Grapes | 7,186 | 7,293 | 6,520 | 91 | 89 | |
| Peaches | 62,887 | 69,665 | 60,106 | 96 | 86 | |
| Raspberries, Black | 945 | 983 | 800 | 85 | 81 | |
| Raspberries, Red, Total | 34,658 | 42,252 | 36,561 | 105 | 87 | |
| IQF | 16,356 | 17,000 | 15,198 | 93 | 89 | |
| Pails and Tubs | 8,344 | 9,767 | 9,209 | 110 | 94 | |
| Barrels, 400 lbs net | 8,873 | 14,791 | 11,598 | 131 | 78 | |
| Concentrate | 1,085 | 694 | 556 | 51 | 80 | |
| Strawberries, Total | 220,329 | 293,560 | 256,580 | 116 | 87 | |
| IQF and Poly | 102,277 | 144,204 | 124,944 | 122 | 87 | |
| Pails and Tubs | 79,092 | 95,193 | 81,347 | 103 | 85 | |
| Barrels and Drums | 31,649 | 43,029 | 41,515 | 131 | 96 | |
| Juice Stock | 7,311 | 11,134 | 8,774 | 120 | 79 | |
| Other Frozen Fruit | 355,842 | 405,492 | 368,148 | 103 | 91 | |
| Total | 895,506 | 1,065,718 | 960,885 | 107 | 90 | 834,039 |
| Frozen Juice | | | | | | |
| Orange Juice Conc. ¹ | 1,613,011 | 1,468,844 | 1,486,342 | 92 | 101 | |
| (Gallon Equivalent) | 162,996 | 148,428 | 150,196 | | | |
| Other Juice Concentrate | 306,539 | 292,595 | 275,917 | 90 | 94 | |
| Total | 1,919,550 | 1,761,439 | 1,762,259 | 92 | 100 | 148,939 |

See footnote(s) at end of table.

--continued

**Stocks in Cold Storage: By Commodity,
United States, January 2005**

| Commodity | Stocks in All Warehouses | | | Percent of | | Public Warehouse Stocks |
|-------------------------|--------------------------|---------------------|---------------------|----------------|----------------|-------------------------|
| | Jan 31, 2004 | Dec 31, 2004 | Jan 31, 2005 | Jan 2004 | Dec 2004 | Jan 31, 2005 |
| | <i>1,000 Pounds</i> | <i>1,000 Pounds</i> | <i>1,000 Pounds</i> | <i>Percent</i> | <i>Percent</i> | <i>1,000 Lbs</i> |
| Frozen Vegetables | | | | | | |
| Asparagus | 7,600 | 9,280 | 8,581 | 113 | 92 | |
| Limas, Fordhook | 5,790 | 8,450 | 7,155 | 124 | 85 | |
| Limas, Baby | 40,789 | 48,955 | 47,569 | 117 | 97 | |
| Green Beans, Reg. Cut | 113,562 | 151,229 | 154,756 | 136 | 102 | |
| Green Beans, Fr. Style | 21,898 | 22,925 | 20,851 | 95 | 91 | |
| Broccoli, Spears | 32,890 | 35,882 | 38,576 | 117 | 108 | |
| Broccoli, Chopped & Cut | 46,069 | 57,607 | 57,602 | 125 | 100 | |
| Brussels Sprouts | 20,655 | 23,519 | 23,162 | 112 | 98 | |
| Carrots, Diced | 85,435 | 117,745 | 113,588 | 133 | 96 | |
| Carrots, Other | 139,613 | 140,440 | 129,680 | 93 | 92 | |
| Cauliflower | 27,295 | 37,123 | 36,878 | 135 | 99 | |
| Corn, Cut | 458,556 | 502,025 | 441,516 | 96 | 88 | |
| Corn, Cob | 260,167 | 242,271 | 226,024 | 87 | 93 | |
| Mixed Vegetables | 42,643 | 46,892 | 48,867 | 115 | 104 | |
| Okra | 31,709 | 33,875 | 27,901 | 88 | 82 | |
| Onion Rings | 6,395 | 6,587 | 6,486 | 101 | 98 | |
| Onions, Other | 26,120 | 33,278 | 34,005 | 130 | 102 | |
| Blackeye Peas | 3,414 | 2,693 | 2,468 | 72 | 92 | |
| Green Peas | 156,435 | 230,326 | 200,782 | 128 | 87 | |
| Peas & Carrots Mixed | 6,698 | 5,641 | 6,022 | 90 | 107 | |
| Spinach | 40,399 | 34,724 | 34,913 | 86 | 101 | |
| Squash, Summer/Zucchini | 39,251 | 45,724 | 38,831 | 99 | 85 | |
| Southern Greens | 19,649 | 17,328 | 17,133 | 87 | 99 | |
| Other Vegetables | 306,091 | 363,579 | 348,578 | 114 | 96 | |
| Total | 1,939,123 | 2,218,098 | 2,071,924 | 107 | 93 | 1,607,510 |
| Potatoes | | | | | | |
| French Fries | 906,579 | 838,438 | 921,709 | 102 | 110 | |
| Other Frozen | 260,680 | 236,381 | 249,328 | 96 | 105 | |
| Total | 1,167,259 | 1,074,819 | 1,171,037 | 100 | 109 | 877,181 |

See footnote(s) at end of table.

--continued

**Stocks in Cold Storage: By Commodity,
United States, January 2005 (Continued)**

| Commodity | Stocks in All Warehouses | | | Percent of | | Public Warehouse Stocks |
|----------------------------|--------------------------|---------------------|---------------------|----------------|----------------|-------------------------|
| | Jan 31, 2004 | Dec 31, 2004 | Jan 31, 2005 | Jan 2004 | Dec 2004 | Jan 31, 2005 |
| | <i>1,000 Pounds</i> | <i>1,000 Pounds</i> | <i>1,000 Pounds</i> | <i>Percent</i> | <i>Percent</i> | <i>1,000 Lbs</i> |
| Meat | | | | | | |
| Frozen Beef | | | | | | |
| Boneless ² | 373,167 | 425,231 | 402,912 | 108 | 95 | |
| Beef Cuts ³ | 61,187 | 59,045 | 53,301 | 87 | 90 | |
| Total | 434,354 | 484,276 | 456,213 | 105 | 94 | 453,753 |
| (Government Owned) | 7,918 | 6,323 | 6,833 | 86 | 108 | |
| Frozen Pork | | | | | | |
| Picnics, Bone-in | 12,207 | 9,812 | 11,799 | 97 | 120 | |
| Hams, Total | 71,825 | 44,073 | 53,300 | 74 | 121 | 51,127 |
| Bone-in | 38,407 | 20,222 | 24,591 | 64 | 122 | 23,470 |
| Boneless ⁴ | 33,418 | 23,851 | 28,709 | 86 | 120 | 27,657 |
| Bellies | 63,095 | 56,026 | 63,528 | 101 | 113 | |
| Loins, Total | 42,245 | 49,709 | 44,075 | 104 | 89 | 40,692 |
| Bone-in | 26,278 | 27,455 | 23,213 | 88 | 85 | |
| Boneless ⁵ | 15,967 | 22,254 | 20,862 | 131 | 94 | |
| Ribs ⁶ | 79,130 | 97,444 | 99,114 | 125 | 102 | |
| Butts | 10,125 | 13,780 | 16,096 | 159 | 117 | |
| Trimming ⁷ | 48,623 | 34,543 | 35,957 | 74 | 104 | |
| Other ⁸ | 80,278 | 85,310 | 86,120 | 107 | 101 | |
| Variety Meats ⁹ | 41,823 | 46,478 | 40,144 | 96 | 86 | |
| Unclassified ¹⁰ | 54,759 | 45,677 | 48,485 | 89 | 106 | |
| Total | 504,110 | 482,852 | 498,618 | 99 | 103 | 453,379 |
| (Government Owned) | 1,323 | 581 | 839 | 63 | 144 | |
| Other | | | | | | |
| Veal | 5,284 | 3,542 | 2,849 | 54 | 80 | |
| Lamb & Mutton | 3,671 | 3,497 | 3,630 | 99 | 104 | |
| Total | 8,955 | 7,039 | 6,479 | 72 | 92 | 6,472 |
| Canned | | | | | | |
| Canned Hams | 5,872 | 3,184 | 2,985 | 51 | 94 | |
| Other Canned Meat | 417 | 1,686 | 1,524 | 365 | 90 | |
| Total | 6,289 | 4,870 | 4,509 | 72 | 93 | 4,415 |
| Total | 953,708 | 979,037 | 965,819 | 101 | 99 | 918,019 |
| Miscellaneous | | | | | | |
| Cooler | 763,624 | 710,734 | 621,283 | 81 | 87 | 241,580 |
| Freezer | 1,686,678 | 1,899,446 | 1,991,608 | 118 | 105 | 1,928,753 |
| Total | 2,450,302 | 2,610,180 | 2,612,891 | 107 | 100 | 2,170,333 |
| Commodities | | | | | | |
| Stored in Coolers | 5,815,698 | 7,442,017 | 6,626,124 | 114 | 89 | 1,013,631 |
| Stored in Freezers | 9,674,814 | 10,052,062 | 9,978,153 | 103 | 99 | 7,260,366 |
| Total | 15,490,512 | 17,494,079 | 16,604,277 | 107 | 95 | 8,273,997 |

¹ Adjusted to 42.0 degrees Brix equivalent (9.896 pounds per gallon).

² Includes all boxed boneless beef, such as ground beef, roasts, steaks, loins, strips, rounds, trimmings, etc. Variety meats (edible offal), such as tongues, livers, hearts, kidneys, and other organs removed from slaughtered beef, are included as miscellaneous freezer stocks.

³ Includes all boxed primal beef cuts, bone-in.

⁴ Includes full ham, bone removed and individual muscles separated.

⁵ Includes pork tenderloins.

⁶ Includes spareribs and backribs.

⁷ Includes 42% regular trimmings, 72% special trimmings, boneless picnic meat, jowls, neckbone trimmings, blade, cheek, head, and shank meat, etc. Packaged bacon, sausage, and processed items, such as hot dogs and luncheon meats, are included in miscellaneous cooler or freezer stocks.

⁸ Includes ears, tails, feet, neckbones and snouts.

⁹ Includes tongues, kidneys, livers, stomachs, hearts, chitterlings, salivary glands, and other organs removed from slaughtered hogs.

¹⁰ Includes product unable to be classified elsewhere in this report.

**Stocks in Cold Storage: By Commodity,
United States, October - December 2004, Revised**

| Commodity | Public Warehouse Stocks ¹ | | |
|----------------------------|--------------------------------------|---------------------|---------------------|
| | Oct 31, 2004 | Nov 30, 2004 | Dec 31, 2004 |
| | <i>1,000 Pounds</i> | <i>1,000 Pounds</i> | <i>1,000 Pounds</i> |
| Meat | | | |
| Frozen Beef | | | |
| Boneless ² | | | |
| Beef Cuts ³ | | | |
| Total | 449,081 | 460,362 | 481,339 |
| (Government Owned) | | | |
| Frozen Pork | | | |
| Picnics, Bone-in | | | |
| Hams, Total | 94,052 | 59,324 | 42,685 |
| Bone-in | 57,932 | 35,399 | 19,759 |
| Boneless ⁴ | 36,120 | 23,925 | 22,926 |
| Bellies | | | |
| Loins, Total | 31,759 | 40,614 | 46,248 |
| Bone-in | | | |
| Boneless ⁵ | | | |
| Ribs ⁶ | | | |
| Butts | | | |
| Trimmings ⁷ | | | |
| Other ⁸ | | | |
| Variety Meats ⁹ | | | |
| Unclassified ¹⁰ | | | |
| Total | 378,450 | 388,434 | 436,187 |
| (Government Owned) | | | |
| Other | | | |
| Veal | | | |
| Lamb & Mutton | | | |
| Total | 7,918 | 7,326 | 6,963 |
| Canned | | | |
| Canned Hams | | | |
| Other Canned Meat | | | |
| Total | 5,555 | 5,566 | 4,792 |
| Total | 841,004 | 861,688 | 929,281 |
| Miscellaneous | | | |
| Cooler | 445,307 | 328,090 | 267,337 |
| Freezer | 2,045,800 | 1,838,584 | 1,846,986 |
| Total | 2,491,107 | 2,166,674 | 2,114,323 |
| Commodities | | | |
| Stored in Coolers | 1,199,174 | 1,046,716 | 1,016,782 |
| Stored in Freezers | 8,364,467 | 7,743,623 | 7,389,005 |
| Total | 9,563,641 | 8,790,339 | 8,405,787 |

¹ Revisions to Public Warehouse items for October, November and December 2004 were necessary for commodities in this table only.

² Includes all boxed boneless beef, such as ground beef, roasts, steaks, loins, strips, rounds, trimmings, etc. Variety meats (edible offal), such as tongues, livers, hearts, kidneys, and other organs removed from slaughtered beef, are included as miscellaneous freezer stocks.

³ Includes all boxed primal beef cuts, bone-in.

⁴ Includes full ham, bone removed and individual muscles separated.

⁵ Includes pork tenderloins.

⁶ Includes spareribs and backribs.

⁷ Includes 42% regular trimmings, 72% special trimmings, boneless picnic meat, jowls, neckbone trimmings, blade, cheek, head, and shank meat, etc. Packaged bacon, sausage, and processed items, such as hot dogs and luncheon meats, are included in miscellaneous cooler or freezer stocks.

⁸ Includes ears, tails, feet, neckbones and snouts.

⁹ Includes tongues, kidneys, livers, stomachs, hearts, chitterlings, salivary glands, and other organs removed from slaughtered hogs.

¹⁰ Includes product unable to be classified elsewhere in this report.

**Stocks in Cold Storage: By Commodity, Region,
and United States, December 31, 2004**

| Commodity | New England | Middle Atlantic | East North Central | West North Central | South Atlantic |
|-----------------------|---------------------|---------------------|--------------------------|--------------------------|---------------------|
| | <i>1,000 Pounds</i> | <i>1,000 Pounds</i> | <i>1,000 Pounds</i> | <i>1,000 Pounds</i> | <i>1,000 Pounds</i> |
| Total Fresh Apples | 30,410 | 513,921 | 286,274 | 1,190 | 227,506 |
| Nuts | | | | | |
| Shelled | | | | | |
| Peanuts | | 2 | 22 | 19 | 215,134 |
| Pecans ¹ | 190 | 59 | | | 4,369 |
| In-Shell | | | | | |
| Pecans ¹ | | | | | 16,383 |
| Dairy Products | | | | | |
| Natural Cheese | | | | | |
| American, Total | 22,835 | 53,212 | 184,145 | 110,292 | 2,505 |
| Other Natural Cheese | 371 | 10,025 | 115,841 | 54,400 | 124 |
| Frozen Poultry | | | | | |
| Chicken | | | | | |
| Broilers, Fryers | | | | | |
| Roasters (Whole) | 1 | 1,762 | 200 | 682 | 3,599 |
| Hens, Mature Chickens | 19 | 142 | 104 | 219 | 699 |
| Other | 907 | 17,502 | 17,657 | 36,164 | 239,064 |
| Total Chicken | 927 | 19,406 | 17,961 | 37,065 | 243,362 |
| Turkeys | | | | | |
| Whole Turkeys | 197 | 6,581 | 970 | 24,176 | 27,877 |
| Other Turkey | 315 | 8,288 | 15,906 | 40,984 | 68,874 |
| Total Turkey | 512 | 14,869 | 16,876 | 65,160 | 96,751 |
| Ducks | | 67 | 437 | 1 | 15 |
| Total Poultry | 1,439 | 34,342 | 35,274 | 102,226 | 340,128 |
| Frozen Fruit | | | | | |
| Apples | 36 | 14,830 | 14,315 | 48 | 607 |
| Blueberries | 10,429 | 7,340 | 36,568 | 716 | 3,977 |
| Cherries, Tart (RTP) | 1 | 4,632 | 59,699 | 62 | 1,235 |
| Cherries, Sweet | 1 | 175 | 3,290 | 468 | 18 |
| Peaches | 90 | 2,670 | 9,040 | 2,743 | 503 |
| Raspberries, Red | 2 | 1,072 | 1,114 | 151 | 198 |
| Strawberries, Total | 24 | 6,238 | 12,118 | 1,345 | 2,923 |
| Other Frozen Fruit | 934 | 10,992 | 257,498 | 3,482 | 2,879 |

See footnote(s) at end of table.

--continued

**Stocks in Cold Storage: By Commodity, Region,
and United States, December 31, 2004 (continued)**

| Commodity | East South Central | West South Central | Mountain | Pacific | US Total |
|-----------------------|--------------------------|--------------------------|---------------------|---------------------|---------------------|
| | <i>1,000 Pounds</i> | <i>1,000 Pounds</i> | <i>1,000 Pounds</i> | <i>1,000 Pounds</i> | <i>1,000 Pounds</i> |
| Total Fresh Apples | | 9,652 | 58,788 | 4,059,247 | 5,186,988 |
| Nuts | | | | | |
| Shelled | | | | | |
| Peanuts | 23,716 | 61,333 | 91 | 163 | 300,480 |
| Pecans ¹ | 365 | 11,919 | | 69 | 16,971 |
| In-Shell | | | | | |
| Pecans ¹ | 2,552 | 76,646 | | | 95,581 |
| Dairy Products | | | | | |
| Natural Cheese | | | | | |
| American, Total | 113 | 902 | 26,479 | 80,594 | 481,077 |
| Other Natural Cheese | 2,365 | 113 | 5,841 | 9,677 | 198,757 |
| Frozen Poultry | | | | | |
| Chicken | | | | | |
| Broilers, Fryers | | | | | |
| Roasters (Whole) | 5,274 | 9,552 | 274 | 1,964 | 23,308 |
| Hens, Mature Chickens | 1 | 822 | 4 | 914 | 2,924 |
| Other | 137,349 | 205,713 | 3,294 | 32,298 | 689,948 |
| Total Chicken | 142,624 | 216,087 | 3,572 | 35,176 | 716,180 |
| Turkeys | | | | | |
| Whole Turkeys | 1,291 | 31,875 | 7,414 | 5,690 | 106,071 |
| Other Turkey | 695 | 16,542 | 9,582 | 21,100 | 182,286 |
| Total Turkey | 1,986 | 48,417 | 16,996 | 26,790 | 288,357 |
| Ducks | 16 | 47 | 29 | 51 | 663 |
| Total Poultry | 144,626 | 264,551 | 20,597 | 62,017 | 1,005,200 |
| Frozen Fruit | | | | | |
| Apples | 2 | 608 | 19 | 7,278 | 37,743 |
| Blueberries | 142 | 775 | 72 | 25,090 | 85,109 |
| Cherries, Tart (RTP) | | 163 | 3,503 | 7,275 | 76,570 |
| Cherries, Sweet | 1 | 106 | 750 | 3,428 | 8,237 |
| Peaches | 32 | 1,151 | 61 | 53,375 | 69,665 |
| Raspberries, Red | 71 | 206 | 21 | 39,417 | 42,252 |
| Strawberries, Total | 909 | 20,106 | 112 | 249,785 | 293,560 |
| Other Frozen Fruit | 179 | 11,975 | 1,769 | 115,784 | 405,492 |

See footnote(s) at end of table.

--continued

**Stocks in Cold Storage: By Commodity, Region,
and United States, December 31, 2004 (continued)**

| Commodity | New England | Middle Atlantic | East North Central | West North Central | South Atlantic |
|---------------------------------|---------------------|---------------------|--------------------------|--------------------------|---------------------|
| | <i>1,000 Pounds</i> | <i>1,000 Pounds</i> | <i>1,000 Pounds</i> | <i>1,000 Pounds</i> | <i>1,000 Pounds</i> |
| Frozen Juice | | | | | |
| Orange Juice Conc. ² | 18 | | 1,315 | 269 | 1,408,375 |
| Other Juice Concentrate | 14,039 | 35,203 | 13,457 | 1,501 | 108,373 |
| Frozen Vegetables ³ | | | | | |
| Asparagus | | 745 | 5,197 | 47 | 120 |
| Limas, Fordhook | | 2,583 | 1,167 | | 543 |
| Limas, Baby | | 7,468 | 1,823 | 1 | 9,543 |
| Green Beans, Reg. Cut | | 24,425 | 36,550 | 1,007 | 15,189 |
| Green Beans, Fr. Style | | 6,924 | 6,710 | 370 | 1,415 |
| Broccoli, Spears | | 6,716 | 4,694 | | 3,362 |
| Broccoli, Chopped & Cut | | 7,672 | 5,555 | 1,685 | 6,009 |
| Brussels Sprouts | | 2,465 | 1,493 | 1 | 2,840 |
| Carrots, Diced | | 7,516 | 23,272 | 360 | 7,210 |
| Carrots, Other | | 19,620 | 24,849 | 499 | 6,053 |
| Cauliflower | | 4,220 | 2,793 | 156 | 1,279 |
| Corn, Cut | | 45,400 | 69,973 | 30,348 | 21,775 |
| Corn, Cob | | 14,971 | 29,314 | 18,677 | 10,363 |
| Mixed Vegetables | | 6,174 | 8,074 | 19 | 2,742 |
| Okra | | 1,336 | 377 | | 4,585 |
| Onion Rings | | 275 | 2,370 | 646 | 1,166 |
| Onions, Other | | 4,303 | 3,202 | 226 | 1,952 |
| Blackeye Peas | | 269 | 29 | | 909 |
| Green Peas | | 31,266 | 26,768 | 10,722 | 6,823 |
| Peas & Carrots Mixed | | 1,273 | 882 | 1 | 389 |
| Spinach | | 7,324 | 1,931 | 76 | 2,265 |
| Squash, Summer/Zucchini | | 3,584 | 9,749 | | 4,200 |
| Southern Greens | | 1,654 | 223 | 1 | 2,402 |
| Other Vegetables | | 45,128 | 49,839 | 10,676 | 21,111 |
| Potatoes | | | | | |
| French Fries | 26,662 | 25,003 | 53,185 | 100,656 | 28,372 |
| Other Frozen | 5,041 | 12,499 | 28,414 | 7,135 | 2,808 |
| Meat | | | | | |
| Frozen Beef | | | | | |
| Boneless ⁴ | 1,179 | 53,818 | 51,680 | 124,213 | 35,658 |
| Beef Cuts ⁵ | 115 | 3,041 | 11,119 | 10,043 | 2,411 |
| Frozen Pork | | | | | |
| Ribs ⁶ | 338 | 1,351 | 23,074 | 43,998 | 17,741 |
| Trimmings ⁷ | | 229 | 7,848 | 19,950 | 3,422 |
| Other ⁸ | 1,607 | 733 | 10,851 | 52,761 | 13,105 |
| Other | | | | | |
| Veal | | 972 | 523 | 98 | 17 |
| Lamb & Mutton | | 456 | 814 | 21 | 158 |

See footnote(s) at end of table.

--continued

**Stocks in Cold Storage: By Commodity, Region,
and United States, December 31, 2004 (continued)**

| Commodity | East South Central | West South Central | Mountain | Pacific | US Total |
|--------------------------------|--------------------------|--------------------------|---------------------|---------------------|---------------------|
| | <i>1,000 Pounds</i> | <i>1,000 Pounds</i> | <i>1,000 Pounds</i> | <i>1,000 Pounds</i> | <i>1,000 Pounds</i> |
| Frozen Juice | | | | | |
| Orange Juice Concentrate | 34 | 2,326 | 2,244 | 54,263 | 1,468,844 |
| Other Juice Concentrate | 121 | 18,132 | 2,118 | 99,651 | 292,595 |
| Frozen Vegetables ³ | | | | | |
| Asparagus | | 271 | 44 | 2,856 | 9,280 |
| Limas, Fordhook | | 118 | 2 | 4,037 | 8,450 |
| Limas, Baby | | 1,398 | 2,122 | 26,600 | 48,955 |
| Green Beans, Reg. Cut | | 941 | 371 | 72,746 | 151,229 |
| Green Beans, Fr. Style | | 146 | 22 | 7,338 | 22,925 |
| Broccoli, Spears | | 11,735 | 129 | 9,246 | 35,882 |
| Broccoli, Chopped & Cut | | 13,975 | 463 | 22,248 | 57,607 |
| Brussels Sprouts | | 214 | 11 | 16,495 | 23,519 |
| Carrots, Diced | | 1,216 | 33 | 78,138 | 117,745 |
| Carrots, Other | | 5,774 | 623 | 83,022 | 140,440 |
| Cauliflower | | 6,031 | 258 | 22,386 | 37,123 |
| Corn, Cut | | 2,222 | 3,047 | 329,260 | 502,025 |
| Corn, Cob | | 921 | 4,378 | 163,647 | 242,271 |
| Mixed Vegetables | | 6,517 | 5 | 23,361 | 46,892 |
| Okra | | 26,901 | | 676 | 33,875 |
| Onion Rings | | 1,112 | 387 | 631 | 6,587 |
| Onions, Other | | 1,849 | 3,513 | 18,233 | 33,278 |
| Blackeye Peas | | 1,072 | 2 | 412 | 2,693 |
| Green Peas | | 2,504 | 11,515 | 140,728 | 230,326 |
| Peas & Carrots Mixed | | 742 | 6 | 2,348 | 5,641 |
| Spinach | | 5,704 | 52 | 17,372 | 34,724 |
| Squash, Summer/Zucchini | | 5,459 | 374 | 22,358 | 45,724 |
| Southern Greens | | 11,115 | | 1,933 | 17,328 |
| Other Vegetables | | 28,602 | 8,400 | 199,823 | 363,579 |
| Potatoes | | | | | |
| French Fries | 7,603 | 11,142 | 194,544 | 391,271 | 838,438 |
| Other Frozen | 1,216 | 30,241 | 50,070 | 98,957 | 236,381 |
| Meat | | | | | |
| Frozen Beef | | | | | |
| Boneless ⁴ | 7,401 | 82,689 | 8,432 | 60,161 | 425,231 |
| Beef Cuts ⁵ | 1,991 | 9,032 | 11,156 | 10,137 | 59,045 |
| Frozen Pork | | | | | |
| Ribs ⁶ | 2,842 | 3,608 | 130 | 4,362 | 97,444 |
| Trimmings ⁷ | 158 | 2,615 | 4 | 317 | 34,543 |
| Other ⁸ | 2,504 | 2,260 | 227 | 1,262 | 85,310 |
| Other | | | | | |
| Veal | | 146 | | 1,786 | 3,542 |
| Lamb & Mutton | 12 | 254 | 25 | 1,757 | 3,497 |

¹ East North Central combined with South Atlantic. Mountain and West North Central combined with West South Central.

² Middle Atlantic combined with South Atlantic.

³ New England combined with Middle Atlantic. East South Central combined with South Atlantic.

⁴ Includes all boxed boneless beef, such as ground beef, roasts, steaks, loins, strips, rounds, trimmings, etc. Variety meats (edible offal), such as tongues, livers, hearts, kidneys, and other organs removed from slaughtered beef, are included as miscellaneous freezer stocks.

⁵ Includes all boxed primal beef cuts, bone-in.

⁶ Includes spareribs and backribs.

⁷ Includes 42% regular trimmings, 72% special trimmings, boneless picnic meat, jowls, neckbone trimmings, blade, cheek, head, and shank meat, etc. Packaged bacon, sausage, and processed items, such as hot dogs and luncheon meats, are included in miscellaneous cooler or freezer stocks.

⁸ Includes ears, tails, feet, neckbones and snouts.

**Stocks in Cold Storage: By Commodity, Region,
and United States, January 31, 2005**

| Commodity | New England | Middle Atlantic | East North Central | West North Central | South Atlantic |
|-----------------------|---------------------|---------------------|--------------------------|--------------------------|---------------------|
| | <i>1,000 Pounds</i> | <i>1,000 Pounds</i> | <i>1,000 Pounds</i> | <i>1,000 Pounds</i> | <i>1,000 Pounds</i> |
| Total Fresh Apples | 22,478 | 455,129 | 237,304 | 255 | 184,480 |
| Nuts | | | | | |
| Shelled | | 40 | 25 | 22 | 246,944 |
| Peanuts | | 40 | 25 | 22 | 246,944 |
| Pecans ¹ | | 71 | | | 5,434 |
| In-Shell | | | | | |
| Pecans ¹ | | | | | 23,348 |
| Dairy Products | | | | | |
| Natural Cheese | | | | | |
| American, Total | 18,649 | 48,969 | 188,722 | 111,098 | 4,824 |
| Other Natural Cheese | 407 | 10,311 | 118,374 | 53,876 | 102 |
| Frozen Poultry | | | | | |
| Chicken | | | | | |
| Broilers, Fryers | | | | | |
| Roasters (Whole) | 1 | 1,992 | 445 | 756 | 4,337 |
| Hens, Mature Chickens | 18 | 141 | 109 | 222 | 645 |
| Other | 1,068 | 16,149 | 17,491 | 32,894 | 203,328 |
| Total Chicken | 1,087 | 18,282 | 18,045 | 33,872 | 208,310 |
| Turkeys | | | | | |
| Whole Turkeys | 267 | 3,504 | 1,096 | 29,416 | 30,342 |
| Other Turkey | 352 | 8,400 | 15,229 | 46,749 | 73,970 |
| Total Turkey | 619 | 11,904 | 16,325 | 76,165 | 104,312 |
| Ducks | | 79 | 202 | | 10 |
| Total Poultry | 1,706 | 30,265 | 34,572 | 110,037 | 312,632 |
| Frozen Fruit | | | | | |
| Apples | 32 | 17,265 | 15,286 | 69 | 864 |
| Blueberries | 9,338 | 6,797 | 33,594 | 588 | 3,636 |
| Cherries, Tart (RTP) | 1 | 4,268 | 52,659 | 51 | 1,096 |
| Cherries, Sweet | | 275 | 3,192 | 355 | 17 |
| Peaches | 78 | 2,390 | 8,526 | 2,928 | 448 |
| Raspberries, Red | 1 | 1,324 | 1,298 | 77 | 180 |
| Strawberries, Total | 1 | 7,270 | 13,791 | 1,439 | 2,739 |
| Other Frozen Fruit | 938 | 10,476 | 229,160 | 3,454 | 2,608 |

See footnote(s) at end of table.

--continued

**Stocks in Cold Storage: By Commodity, Region,
and United States, January 31, 2005 (continued)**

| Commodity | East South Central | West South Central | Mountain | Pacific | US Total |
|-----------------------|--------------------------|--------------------------|---------------------|---------------------|---------------------|
| | <i>1,000 Pounds</i> | <i>1,000 Pounds</i> | <i>1,000 Pounds</i> | <i>1,000 Pounds</i> | <i>1,000 Pounds</i> |
| Total Fresh Apples | | 9,650 | 45,380 | 3,460,177 | 4,414,853 |
| Nuts | | | | | |
| Shelled | | | | | |
| Peanuts | 26,282 | 76,216 | 108 | 189 | 349,826 |
| Pecans ¹ | 661 | 13,192 | | 122 | 19,480 |
| In-Shell | | | | | |
| Pecans ¹ | 2,488 | 118,190 | | | 144,026 |
| Dairy Products | | | | | |
| Natural Cheese | | | | | |
| American, Total | 171 | 1,184 | 29,795 | 80,966 | 484,378 |
| Other Natural Cheese | 2,257 | 162 | 6,021 | 10,041 | 201,551 |
| Frozen Poultry | | | | | |
| Chicken | | | | | |
| Broilers, Fryers | | | | | |
| Roasters (Whole) | 5,681 | 11,676 | 348 | 2,336 | 27,572 |
| Hens, Mature Chickens | | 662 | 10 | 903 | 2,710 |
| Other | 117,620 | 183,773 | 3,413 | 30,328 | 606,064 |
| Total Chicken | 123,301 | 196,111 | 3,771 | 33,567 | 636,346 |
| Turkeys | | | | | |
| Whole Turkeys | 1,738 | 57,270 | 8,780 | 7,688 | 140,101 |
| Other Turkey | 924 | 24,087 | 10,008 | 19,494 | 199,213 |
| Total Turkey | 2,662 | 81,357 | 18,788 | 27,182 | 339,314 |
| Ducks | 7 | 46 | 30 | 20 | 394 |
| Total Poultry | 125,970 | 277,514 | 22,589 | 60,769 | 976,054 |
| Frozen Fruit | | | | | |
| Apples | 4 | 891 | 31 | 9,915 | 44,357 |
| Blueberries | 128 | 758 | 80 | 22,760 | 77,679 |
| Cherries, Tart (RTP) | | 140 | 3,114 | 6,664 | 67,993 |
| Cherries, Sweet | 1 | 165 | 793 | 3,261 | 8,059 |
| Peaches | 29 | 1,182 | 55 | 44,470 | 60,106 |
| Raspberries, Red | 61 | 153 | 19 | 33,448 | 36,561 |
| Strawberries, Total | 803 | 18,791 | 102 | 211,644 | 256,580 |
| Other Frozen Fruit | 159 | 12,332 | 2,024 | 106,997 | 368,148 |

See footnote(s) at end of table.

--continued

**Stocks in Cold Storage: By Commodity, Region,
and United States, January 31, 2005 (continued)**

| Commodity | New England | Middle Atlantic | East North Central | West North Central | South Atlantic |
|---------------------------------|---------------------|---------------------|--------------------------|--------------------------|---------------------|
| | <i>1,000 Pounds</i> | <i>1,000 Pounds</i> | <i>1,000 Pounds</i> | <i>1,000 Pounds</i> | <i>1,000 Pounds</i> |
| Frozen Juice | | | | | |
| Orange Juice Conc. ² | 2 | | 986 | 199 | 1,474,740 |
| Other Juice Concentrate | 12,967 | 29,650 | 11,189 | 1,808 | 119,949 |
| Frozen Vegetables ³ | | | | | |
| Asparagus | | 756 | 4,614 | 77 | 142 |
| Limas, Fordhook | | 2,272 | 1,021 | | 500 |
| Limas, Baby | | 6,588 | 1,686 | 1 | 9,246 |
| Green Beans, Reg. Cut | | 22,343 | 38,997 | 961 | 15,156 |
| Green Beans, Fr. Style | | 5,279 | 6,549 | 324 | 1,236 |
| Broccoli, Spears | | 7,493 | 5,404 | 1 | 3,705 |
| Broccoli, Chopped & Cut | | 8,424 | 5,469 | 1,978 | 6,283 |
| Brussels Sprouts | | 2,571 | 1,666 | 1 | 2,801 |
| Carrots, Diced | | 6,030 | 27,965 | 370 | 6,569 |
| Carrots, Other | | 16,363 | 23,683 | 512 | 5,563 |
| Cauliflower | | 4,095 | 3,205 | 189 | 1,373 |
| Corn, Cut | | 38,525 | 63,540 | 25,523 | 19,745 |
| Corn, Cob | | 13,818 | 26,973 | 16,011 | 10,572 |
| Mixed Vegetables | | 6,709 | 7,876 | 23 | 2,812 |
| Okra | | 1,230 | 434 | | 4,534 |
| Onion Rings | | 338 | 2,494 | 888 | 1,506 |
| Onions, Other | | 4,661 | 3,308 | 279 | 1,784 |
| Blackeye Peas | | 250 | 61 | | 872 |
| Green Peas | | 27,288 | 24,239 | 9,370 | 6,081 |
| Peas & Carrots Mixed | | 1,397 | 968 | 1 | 384 |
| Spinach | | 6,626 | 1,782 | 22 | 2,264 |
| Squash, Summer/Zucchini | | 3,120 | 5,978 | | 4,000 |
| Southern Greens | | 1,646 | 246 | 1 | 2,404 |
| Other Vegetables | | 42,547 | 45,922 | 8,951 | 19,655 |
| Potatoes | | | | | |
| French Fries | 36,163 | 23,677 | 56,954 | 120,229 | 31,335 |
| Other Frozen | 5,874 | 11,620 | 31,138 | 8,525 | 2,959 |
| Meat | | | | | |
| Frozen Beef | | | | | |
| Boneless ⁴ | 1,074 | 56,011 | 46,324 | 115,536 | 37,096 |
| Beef Cuts ⁵ | 157 | 2,778 | 10,419 | 9,257 | 2,368 |
| Frozen Pork | | | | | |
| Ribs ⁶ | 395 | 1,357 | 25,533 | 44,049 | 16,541 |
| Trimmings ⁷ | | 224 | 7,972 | 21,102 | 3,177 |
| Other ⁸ | 1,610 | 712 | 10,401 | 53,518 | 13,264 |
| Other | | | | | |
| Veal | | 684 | 459 | 82 | 13 |
| Lamb & Mutton | | 434 | 926 | 20 | 145 |

See footnote(s) at end of table.

--continued

**Stocks in Cold Storage: By Commodity, Region,
and United States, January 31, 2005 (continued)**

| Commodity | East South Central | West South Central | Mountain | Pacific | US Total |
|--------------------------------|--------------------------|--------------------------|---------------------|---------------------|---------------------|
| | <i>1,000 Pounds</i> | <i>1,000 Pounds</i> | <i>1,000 Pounds</i> | <i>1,000 Pounds</i> | <i>1,000 Pounds</i> |
| Frozen Juice | | | | | |
| Orange Juice Concentrate | 28 | 1,963 | 1,602 | 6,822 | 1,486,342 |
| Other Juice Concentrate | 81 | 18,683 | 1,823 | 79,767 | 275,917 |
| Frozen Vegetables ³ | | | | | |
| Asparagus | | 366 | 47 | 2,579 | 8,581 |
| Limas, Fordhook | | 63 | | 3,299 | 7,155 |
| Limas, Baby | | 2,113 | 2,510 | 25,425 | 47,569 |
| Green Beans, Reg. Cut | | 1,023 | 459 | 75,817 | 154,756 |
| Green Beans, Fr. Style | | 243 | 2 | 7,218 | 20,851 |
| Broccoli, Spears | | 11,206 | 146 | 10,621 | 38,576 |
| Broccoli, Chopped & Cut | | 13,634 | 474 | 21,340 | 57,602 |
| Brussels Sprouts | | 275 | 4 | 15,844 | 23,162 |
| Carrots, Diced | | 1,723 | 50 | 70,881 | 113,588 |
| Carrots, Other | | 5,816 | 504 | 77,239 | 129,680 |
| Cauliflower | | 7,624 | 272 | 20,120 | 36,878 |
| Corn, Cut | | 2,357 | 1,304 | 290,522 | 441,516 |
| Corn, Cob | | 1,241 | 1,538 | 155,871 | 226,024 |
| Mixed Vegetables | | 6,597 | 15 | 24,835 | 48,867 |
| Okra | | 20,718 | | 985 | 27,901 |
| Onion Rings | | 237 | 402 | 621 | 6,486 |
| Onions, Other | | 1,602 | 3,162 | 19,209 | 34,005 |
| Blackeye Peas | | 892 | | 393 | 2,468 |
| Green Peas | | 2,285 | 13,029 | 118,490 | 200,782 |
| Peas & Carrots Mixed | | 1,040 | 16 | 2,216 | 6,022 |
| Spinach | | 9,868 | 53 | 14,298 | 34,913 |
| Squash, Summer/Zucchini | | 5,009 | 776 | 19,948 | 38,831 |
| Southern Greens | | 11,074 | | 1,762 | 17,133 |
| Other Vegetables | | 25,581 | 8,138 | 197,784 | 348,578 |
| Potatoes | | | | | |
| French Fries | 8,015 | 18,333 | 199,821 | 427,182 | 921,709 |
| Other Frozen | 1,728 | 25,954 | 54,863 | 106,667 | 249,328 |
| Meat | | | | | |
| Frozen Beef | | | | | |
| Boneless ⁴ | 6,851 | 78,973 | 8,476 | 52,571 | 402,912 |
| Beef Cuts ⁵ | 2,322 | 8,137 | 10,041 | 7,822 | 53,301 |
| Frozen Pork | | | | | |
| Ribs ⁶ | 2,544 | 3,809 | 241 | 4,645 | 99,114 |
| Trimmings ⁷ | 167 | 2,839 | 13 | 463 | 35,957 |
| Other ⁸ | 2,654 | 2,460 | 275 | 1,226 | 86,120 |
| Other | | | | | |
| Veal | 15 | 139 | | 1,457 | 2,849 |
| Lamb & Mutton | | 234 | 50 | 1,821 | 3,630 |

¹ East North Central combined with South Atlantic. Mountain and West North Central Combined with West South Central.

² Middle Atlantic combined with South Atlantic.

³ New England combined with Middle Atlantic. East South Central combined with South Atlantic.

⁴ Includes all boxed boneless beef, such as ground beef, roasts, steaks, loins, strips, rounds, trimmings, etc. Variety meats (edible offal), such as tongues, livers, hearts, kidneys, and other organs removed from slaughtered beef, are included as miscellaneous freezer stocks.

⁵ Includes all boxed primal beef cuts, bone-in.

⁶ Includes spareribs and backribs.

⁷ Includes 42% regular trimmings, 72% special trimmings, boneless picnic meat, jowls, neckbone trimmings, blade, cheek, head, and shank meat, etc. Packaged bacon, sausage, and processed items, such as hot dogs and luncheon meats, are included in miscellaneous cooler or freezer stocks.

⁸ Includes ears, tails, feet, neckbones and snouts.

**Public General Warehouses: Cold Storage Space Occupied
by Region and United States, January 2005**

| Region | Cooler | | | | Freezer | | | |
|------------------|--------------------|--------------------------|----------------|----------------|--------------------|--------------------------|----------------|----------------|
| | Usable Space | Usable Space Occupied | | | Usable Space | Usable Space Occupied | | |
| | | Jan 31 2005 | Jan 31 2004 | Dec 31 2004 | | Jan 31 2005 | Jan 31 2004 | Dec 31 2004 |
| | <i>1,000 Cu Ft</i> | <i>Percent</i> | <i>Percent</i> | <i>Percent</i> | <i>1,000 Cu Ft</i> | <i>Percent</i> | <i>Percent</i> | <i>Percent</i> |
| New England | 1,741 | | | | 15,747 | | | |
| Middle Atlantic | 46,915 | | | | 136,369 | | | |
| E. North Central | 58,856 | | | | 222,956 | | | |
| W. North Central | 46,646 | | | | 158,508 | | | |
| South Atlantic | 53,595 | | | | 194,402 | | | |
| E. South Central | 9,795 | | | | 70,973 | | | |
| W. South Central | 29,130 | | | | 139,558 | | | |
| Mountain | 12,153 | | | | 61,445 | | | |
| Pacific | 50,831 | | | | 316,596 | | | |
| US | 309,662 | | | | 1,316,554 | | | |

Cold Storage Regions



**Apples in Cold Storage: By State
and United States, January 2005**

| State | All Warehouses | | |
|--------------|---------------------|---------------------|----------------|
| | Jan 31, 2004 | Dec 31, 2005 | Jan 31 2005 |
| | <i>1,000 Pounds</i> | <i>1,000 Pounds</i> | |
| CA | 47,574 | 62,409 | 51,334 |
| MI | 237,235 | 268,632 | 227,805 |
| N ENG | 24,854 | 30,410 | 22,478 |
| NY | 287,910 | 282,828 | 240,870 |
| OH | 9,460 | 10,465 | 6,360 |
| OR | 25,315 | 36,238 | 57,705 |
| PA | 203,693 | 231,000 | 214,200 |
| VA | 115,245 | 134,422 | 102,759 |
| WA | 2,313,276 | 3,960,600 | 3,351,138 |
| WV | 69,349 | 72,120 | 65,084 |
| Other States | 49,050 | 97,864 | 75,120 |
| US | 3,382,961 | 5,186,988 | 4,414,853 |

Survey Procedures: Questionnaires are mailed about the 24th of each month to all operators on the list of approximately 1,400 public and private cold storage warehouses. In addition, apple data are obtained from special surveys and other sources (State Departments of Agriculture, U.S. Apple Association, etc.). All survey data represent stocks as of the end of the month.

Data are collected from warehouses artificially cooled to a temperature of 50 degrees Fahrenheit or lower, and whose food products are normally stored for 30 days or more. All food items in these facilities are reported regardless of the number of days stored at the time of the report. Also included are specialized storage facilities meeting the 30 day requirement, such as fruit houses, dairy manufacturing plants, frozen fruit, fruit juice, and vegetable processors, and poultry and meat packing plants. Excluded are stocks in space maintained by wholesalers, jobbers, distributors, chain stores, locker plants containing individual lockers, meat packer branch houses, and frozen food processors whose entire inventories are turned over more than once a month.

Estimating Procedures: Data for reporting firms are added to estimates for non-reporting firms to obtain regional and National totals. Estimates for non-reporting firms are obtained by multiplying the previous month's figure by a percent change from the previous month. The percent change is calculated for each item from totals of the current and previous month summed from firms that reported both months.

Revision Policy: Data are revised the following month based on late reports or corrected data. Final figures are published in the annual summary in February of the following year.

Reliability: Reports are received from 900 firms each month which represent about 70 percent of the total capacity. Firms that are not on the list or firms who have never reported are not represented in the data. Monthly data can vary due to different firms reporting month to month. Survey data are also subject to non-sampling errors such as omissions and mistakes in reporting and in processing the data. While these errors cannot be measured directly, they are minimized by carefully reviewing all reported data for consistency and reasonableness.

The United States Department of Agriculture (USDA) prohibits discrimination in all its programs on the basis of race, color, national origin, gender, religion, age, disability, political beliefs, sexual orientation, and marital or family status. (Not all prohibited bases apply to all programs.) Persons with disabilities who require alternative means for communication of program information (braille, large print, audiotape, etc.) should contact the USDA's TARGET Center at 202-720-2600 (voice and TDD).

To file a complaint of discrimination, write USDA, Director, Office of Civil Rights, Room 326-W, Whitten Building, 1400 Independence Avenue, SW, Washington, D.C., 20250-9410, or call 202-720-5964 (voice or TDD). USDA is an equal opportunity provider and employer.

ACCESS TO REPORTS!!

For your convenience, there are several ways to obtain NASS reports, data products, and services:

INTERNET ACCESS

All NASS reports are available free of charge on the worldwide Internet. For access, connect to the Internet and go to the NASS Home Page at: www.usda.gov/nass/. Select "Today's Reports" or Publications and then Reports Calendar or Publications and then Search, by Title or Subject.

E-MAIL SUBSCRIPTION

All NASS reports are available by subscription free of charge direct to your e-mail address. Starting with the NASS Home Page at www.usda.gov/nass/, click on **Publications**, then click on the **Subscribe by E-mail** button which takes you to the page describing e-mail delivery of reports. Finally, click on **Go to the Subscription Page** and follow the instructions.

PRINTED REPORTS OR DATA PRODUCTS

CALL OUR TOLL-FREE ORDER DESK: 800-999-6779 (U.S. and Canada)
Other areas, please call 703-605-6220 FAX: 703-605-6900
(Visa, MasterCard, check, or money order acceptable for payment.)

ASSISTANCE

For **assistance** with general agricultural statistics or further information about NASS or its products or services, contact the **Agricultural Statistics Hotline** at **800-727-9540**, 7:30 a.m. to 4:00 p.m. ET, or e-mail: nass@nass.usda.gov.
