



# Cold Storage

---

Released April 22, 2005, by the National Agricultural Statistics Service (NASS), Agricultural Statistics Board, U.S. Department of Agriculture. For information on *Cold Storage* call Perry Game at (202) 720-8784, office hours 7:00 a.m. to 3:30 p.m. ET.

## Highlights

**Frozen food stocks** in refrigerated warehouses on March 31, 2005 were greater than year earlier levels for pork, vegetables, chicken, and fruit.

Butter stocks were up 20 percent from last month, but down 16 percent from a year ago.

**Total red meat supplies** in freezers were down 2 percent from last month, but up 6 percent from last year. Frozen pork supplies were up slightly from last month and up 21 percent from the previous year. Stocks of pork bellies were up 8 percent from last month and up 62 percent from last year.

**Total frozen poultry supplies** on March 31, 2005 were 7 percent above the previous month, but down 2 percent from a year ago. Total stocks of chicken were up 6 percent from the previous month and up 11 percent from last year. Total pounds of turkey in freezers were up 10 percent from last month, but down 17 percent from March 31, 2004.

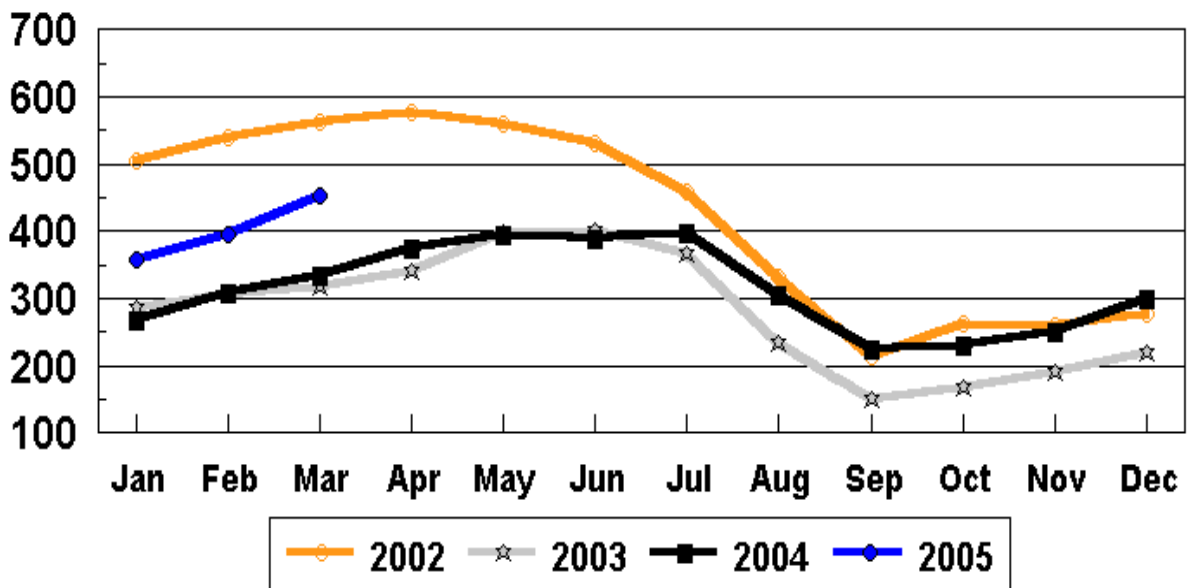
This page is intentionally blank.

## Contents

	Page
Stocks in Cold Storage: By Commodity, United States, March 2005 .....	4
Stocks in Cold Storage: By Commodity, Region, and United States, February 28, 2005 .....	8
Stocks in Cold Storage: By Commodity, Region, and United States, March 31, 2005 .....	12
Public General Warehouses: Cold Storage Space Occupied by Region and United States, March 2005 .....	16
Apples in Cold Storage: By State and United States, March 2005 .....	17
Survey and Estimating Procedures, Revision Policy and Reliability .....	18
Access to Reports .....	19

### Shelled Peanuts-United States Cold Storage Stocks, 2002-2005

Million Pounds



**Stocks in Cold Storage: By Commodity,  
United States, March 2005**

Commodity	Stocks in All Warehouses			Percent of		Public Warehouse Stocks
	Mar 31, 2004	Feb 28, 2005	Mar 31, 2005	Mar 2004	Feb 2005	Mar 31, 2005
	<i>1,000 Pounds</i>	<i>1,000 Pounds</i>	<i>1,000 Pounds</i>	<i>Percent</i>	<i>Percent</i>	<i>1,000 Lbs</i>
Apples						
Regular Storage	183,302	316,524	207,320	113	65	
Controlled Atmosphere	1,795,704	3,336,128	2,588,717	144	78	
Total	1,979,006	3,652,652	2,796,037	141	77	150
Pears						
Bartlett	2,395	273	255	11	93	
Other Varieties	136,617	148,642	104,889	77	71	
Total	139,012	148,915	105,144	76	71	485
Nuts						
Shelled						
Peanuts	333,671	395,583	454,085	136	115	
Pecans	32,692	25,282	28,461	87	113	
Other Shelled	154,331	121,091	134,980	87	111	
Total	520,694	541,956	617,526	119	114	242,861
In-Shell						
Peanuts	20,575	20,796	33,140	161	159	
Pecans	169,860	145,263	129,207	76	89	
Other In-Shell	9,127	6,409	8,043	88	125	
Total	199,562	172,468	170,390	85	99	47,431
Dairy Products						
Butter, Total	158,118	110,897	132,673	84	120	121,855
(Government Owned)	602	100	276	46	276	
Natural Cheese						
American, Total	520,803	496,588	521,979	100	105	
(Government Owned)	9,615	2,694	1,504	16	56	
Swiss	23,277	27,329	22,620	97	83	
Other Natural Cheese	215,466	191,855	202,346	94	105	
Total	759,546	715,772	746,945	98	104	410,287
Eggs, Frozen						
Whites	2,860	2,903	2,845	99	98	
Yolks	1,003	719	828	83	115	
Whole & Mixed	11,895	11,552	12,108	102	105	
Unclassified	3,489	2,691	2,767	79	103	
Total	19,247	17,865	18,548	96	104	17,828
Frozen Poultry						
Chicken						
Broilers, Fryers						
Roasters (Whole)	24,837	22,700	26,829	108	118	
Hens, Mature Chickens	4,681	2,112	2,876	61	136	
Breasts & Breast Meat	88,847	151,320	148,821	168	98	
Drumsticks	17,171	11,780	9,184	53	78	
Leg Quarters	106,200	50,167	59,810	56	119	
Legs	13,997	9,301	10,975	78	118	
Thigh & Thigh Quarters	7,028	9,560	13,181	188	138	
Thigh Meat	15,516	11,995	10,851	70	90	
Wings	24,281	33,854	42,549	175	126	
Paws and Feet	18,306	12,373	12,505	68	101	
Other	283,874	319,417	334,227	118	105	
Total Chicken	604,738	634,579	671,808	111	106	

See footnote(s) at end of table.

--continued

**Stocks in Cold Storage: By Commodity,  
United States, March 2005**

Commodity	Stocks in All Warehouses			Percent of		Public Warehouse Stocks
	Mar 31, 2004	Feb 28, 2005	Mar 31, 2005	Mar 2004	Feb 2005	Mar 31, 2005
	<i>1,000 Pounds</i>	<i>1,000 Pounds</i>	<i>1,000 Pounds</i>	<i>Percent</i>	<i>Percent</i>	<i>1,000 Lbs</i>
Turkeys						
Toms (Whole Carcasses)	151,384	104,512	124,316	82	119	
Hens (Whole Carcasses)	103,844	76,932	85,744	83	111	
Whole Turkeys	255,228	181,444	210,060	82	116	
Other Turkey	249,333	200,490	208,472	84	104	
Total Turkey	504,561	381,934	418,532	83	110	323,441
Ducks	1,246	469	320	26	68	
Total Poultry	1,110,545	1,016,982	1,090,660	98	107	952,129
Frozen Fruit						
Apples	55,604	89,864	89,128	160	99	
Apricots	4,285	5,025	4,175	97	83	
Blackberries, Total	15,849	21,540	18,652	118	87	
IQF	11,126	14,908	12,790	115	86	
Pails and Tubs	1,756	2,981	2,735	156	92	
Barrels, 400 lbs net	2,201	3,318	2,854	130	86	
Concentrate	766	333	273	36	82	
Blueberries	51,158	68,307	53,546	105	78	
Boysenberries	546	1,031	686	126	67	
Cherries, Tart (RTP)	41,893	69,864	56,054	134	80	
Cherries, Tart (Juice)	1,015	1,334	1,307	129	98	
Cherries, Sweet	5,534	10,160	8,849	160	87	
Grapes	5,487	3,186	2,599	47	82	
Peaches	43,404	53,068	42,839	99	81	
Raspberries, Black	743	748	448	60	60	
Raspberries, Red, Total	25,813	33,104	30,491	118	92	
IQF	13,602	14,591	13,709	101	94	
Pails and Tubs	5,735	8,213	6,919	121	84	
Barrels, 400 lbs net	5,744	9,741	8,858	154	91	
Concentrate	732	559	1,005	137	180	
Strawberries, Total	177,949	213,408	173,271	97	81	
IQF and Poly	79,438	90,762	80,697	102	89	
Pails and Tubs	59,605	73,220	56,700	95	77	
Barrels and Drums	31,794	43,446	27,664	87	64	
Juice Stock	7,112	5,980	8,210	115	137	
Other Frozen Fruit	286,429	308,967	268,909	94	87	
Total	715,709	879,606	750,954	105	85	651,897
Frozen Juice						
Orange Juice Conc. <sup>1</sup>	1,790,524	1,578,921	1,580,411	88	100	
(Gallon Equivalent)	180,934	159,551	159,702			
Other Juice Concentrate	349,055	309,713	318,328	91	103	
Total	2,139,579	1,888,634	1,898,739	89	101	219,135

See footnote(s) at end of table.

--continued

**Stocks in Cold Storage: By Commodity,  
United States, March 2005**

Commodity	Stocks in All Warehouses			Percent of		Public Warehouse Stocks
	Mar 31, 2004	Feb 28, 2005	Mar 31, 2005	Mar 2004	Feb 2005	Mar 31, 2005
	<i>1,000 Pounds</i>	<i>1,000 Pounds</i>	<i>1,000 Pounds</i>	<i>Percent</i>	<i>Percent</i>	<i>1,000 Lbs</i>
Frozen Vegetables						
Asparagus	6,435	8,206	7,785	121	95	
Limas, Fordhook	3,041	6,718	6,384	210	95	
Limas, Baby	33,405	46,818	38,726	116	83	
Green Beans, Reg. Cut	80,039	143,724	121,171	151	84	
Green Beans, Fr. Style	15,680	17,634	14,084	90	80	
Broccoli, Spears	40,269	45,268	42,597	106	94	
Broccoli, Chopped & Cut	52,822	65,779	65,185	123	99	
Brussels Sprouts	15,410	21,966	21,006	136	96	
Carrots, Diced	71,007	107,143	93,877	132	88	
Carrots, Other	109,696	123,374	112,678	103	91	
Cauliflower	19,182	36,703	30,986	162	84	
Corn, Cut	362,149	414,544	365,793	101	88	
Corn, Cob	194,069	199,547	161,523	83	81	
Mixed Vegetables	46,802	49,374	44,429	95	90	
Okra	21,607	24,880	17,634	82	71	
Onion Rings	6,420	5,689	5,657	88	99	
Onions, Other	30,304	38,502	41,990	139	109	
Blackeye Peas	3,367	1,845	2,054	61	111	
Green Peas	104,346	182,590	159,966	153	88	
Peas & Carrots Mixed	6,189	5,629	5,143	83	91	
Spinach	55,321	36,922	42,067	76	114	
Squash, Summer/Zucchini	31,602	50,022	44,751	142	89	
Southern Greens	18,710	17,718	20,481	109	116	
Other Vegetables	263,862	343,443	322,510	122	94	
Total	1,591,734	1,994,038	1,788,477	112	90	1,279,724
Potatoes						
French Fries	919,539	903,956	855,524	93	95	
Other Frozen	272,912	248,862	239,426	88	96	
Total	1,192,451	1,152,818	1,094,950	92	95	829,615

See footnote(s) at end of table.

--continued

**Stocks in Cold Storage: By Commodity,  
United States, March 2005 (Continued)**

Commodity	Stocks in All Warehouses			Percent of		Public Warehouse Stocks
	Mar 31, 2004	Feb 28, 2005	Mar 31, 2005	Mar 2004	Feb 2005	Mar 31, 2005
	<i>1,000 Pounds</i>	<i>1,000 Pounds</i>	<i>1,000 Pounds</i>	<i>Percent</i>	<i>Percent</i>	<i>1,000 Lbs</i>
<b>Meat</b>						
Frozen Beef						
Boneless <sup>2</sup>	364,544	351,530	330,039	91	94	
Beef Cuts <sup>3</sup>	52,228	48,755	43,597	83	89	
Total	416,772	400,285	373,636	90	93	371,098
(Government Owned)	5,733	7,029	6,953	121	99	
Frozen Pork						
Picnics, Bone-in	12,715	13,451	12,098	95	90	
Hams, Total	51,796	66,160	66,079	128	100	62,741
Bone-in	25,678	33,772	29,222	114	87	27,608
Boneless <sup>4</sup>	26,118	32,388	36,857	141	114	35,133
Bellies	50,126	75,321	81,316	162	108	
Loins, Total	39,253	47,590	46,044	117	97	43,650
Bone-in	22,591	23,866	22,814	101	96	
Boneless <sup>5</sup>	16,662	23,724	23,230	139	98	
Ribs <sup>6</sup>	74,032	101,372	93,316	126	92	
Butts	10,852	15,433	14,442	133	94	
Trimming <sup>7</sup>	40,814	41,473	45,894	112	111	
Other <sup>8</sup>	71,947	87,227	90,415	126	104	
Variety Meats <sup>9</sup>	40,962	41,217	41,108	100	100	
Unclassified <sup>10</sup>	54,849	51,779	52,688	96	102	
Total	447,346	541,023	543,400	121	100	495,469
(Government Owned)	985	233	521	53	224	
Other						
Veal	5,889	2,729	2,672	45	98	
Lamb & Mutton	3,164	7,585	7,657	242	101	
Total	9,053	10,314	10,329	114	100	10,316
Canned						
Canned Hams	5,035	2,300	2,393	48	104	
Other Canned Meat	1,152	2,099	2,826	245	135	
Total	6,187	4,399	5,219	84	119	5,186
Total	879,358	956,021	932,584	106	98	882,069
Miscellaneous						
Cooler	674,450	628,033	572,030	85	91	237,726
Freezer	1,783,966	2,058,416	2,022,928	113	98	1,960,082
Total	2,458,416	2,686,449	2,594,958	106	97	2,197,808
Commodities						
Stored in Coolers	4,290,238	5,875,740	5,025,149	117	86	1,095,803
Stored in Freezers	9,572,739	10,059,333	9,713,436	101	97	6,909,148
Total	13,862,977	15,935,073	14,738,585	106	92	8,004,951

<sup>1</sup> Adjusted to 42.0 degrees Brix equivalent (9.896 pounds per gallon).

<sup>2</sup> Includes all boxed boneless beef, such as ground beef, roasts, steaks, loins, strips, rounds, trimmings, etc. Variety meats (edible offal), such as tongues, livers, hearts, kidneys, and other organs removed from slaughtered beef, are included as miscellaneous freezer stocks.

<sup>3</sup> Includes all boxed primal beef cuts, bone-in.

<sup>4</sup> Includes full ham, bone removed and individual muscles separated.

<sup>5</sup> Includes pork tenderloins.

<sup>6</sup> Includes spareribs and backribs.

<sup>7</sup> Includes 42% regular trimmings, 72% special trimmings, boneless picnic meat, jowls, neckbone trimmings, blade, cheek, head, and shank meat, etc. Packaged bacon, sausage, and processed items, such as hot dogs and luncheon meats, are included in miscellaneous cooler or freezer stocks.

<sup>8</sup> Includes ears, tails, feet, neckbones and snouts.

<sup>9</sup> Includes tongues, kidneys, livers, stomachs, hearts, chitterlings, salivary glands, and other organs removed from slaughtered hogs.

<sup>10</sup> Includes product unable to be classified elsewhere in this report.

**Stocks in Cold Storage: By Commodity, Region,  
and United States, February 28, 2005**

Commodity	New England	Middle Atlantic	East North Central	West North Central	South Atlantic
	<i>1,000 Pounds</i>	<i>1,000 Pounds</i>	<i>1,000 Pounds</i>	<i>1,000 Pounds</i>	<i>1,000 Pounds</i>
Total Fresh Apples	16,590	342,423	190,228		152,092
Nuts					
Shelled					
Peanuts		31	28	24	283,158
Pecans <sup>1</sup>	143	73			9,160
In-Shell					
Pecans <sup>1</sup>					18,087
Dairy Products					
Natural Cheese					
American, Total	24,904	47,743	200,045	110,831	4,038
Other Natural Cheese	345	9,116	117,098	47,261	100
Frozen Poultry					
Chicken					
Broilers, Fryers					
Roasters (Whole)	1	1,751	423	766	3,706
Hens, Mature Chickens	15	194	77	167	526
Other	811	15,365	18,180	31,522	206,620
Total Chicken	827	17,310	18,680	32,455	210,852
Turkeys					
Whole Turkeys	259	4,394	2,596	39,353	41,971
Other Turkey	360	7,791	16,397	47,537	70,213
Total Turkey	619	12,185	18,993	86,890	112,184
Ducks		70	258		11
Total Poultry	1,446	29,565	37,931	119,345	323,047
Frozen Fruit					
Apples	29	22,132	55,430	82	411
Blueberries	8,995	5,898	30,715	533	2,209
Cherries, Tart (RTP)	1	5,426	50,014	109	1,018
Cherries, Sweet		250	5,514	398	13
Peaches	66	2,381	8,130	2,705	409
Raspberries, Red	1	1,541	1,732	129	152
Strawberries, Total	3	8,159	12,196	1,316	2,551
Other Frozen Fruit	931	9,570	186,506	3,340	2,785

See footnote(s) at end of table.

--continued



**Stocks in Cold Storage: By Commodity, Region,  
and United States, February 28, 2005 (continued)**

Commodity	East South Central	West South Central	Mountain	Pacific	US Total
	<i>1,000 Pounds</i>	<i>1,000 Pounds</i>	<i>1,000 Pounds</i>	<i>1,000 Pounds</i>	<i>1,000 Pounds</i>
Total Fresh Apples		7,560	26,619	2,917,140	3,652,652
Nuts					
Shelled					
Peanuts	28,050	83,977	105	210	395,583
Pecans <sup>1</sup>	835	14,937		134	25,282
In-Shell					
Pecans <sup>1</sup>	1,970	125,206			145,263
Dairy Products					
Natural Cheese					
American, Total	78	1,568	27,209	80,172	496,588
Other Natural Cheese	2,225	163	5,674	9,873	191,855
Frozen Poultry					
Chicken					
Broilers, Fryers					
Roasters (Whole)	3,770	10,715	279	1,289	22,700
Hens, Mature Chickens	40	730	17	346	2,112
Other	132,208	172,526	3,050	29,485	609,767
Total Chicken	136,018	183,971	3,346	31,120	634,579
Turkeys					
Whole Turkeys	2,185	71,289	6,839	12,558	181,444
Other Turkey	856	26,475	11,786	19,075	200,490
Total Turkey	3,041	97,764	18,625	31,633	381,934
Ducks	8	67	35	20	469
Total Poultry	139,067	281,802	22,006	62,773	1,016,982
Frozen Fruit					
Apples	5	911	73	10,791	89,864
Blueberries	122	697	66	19,072	68,307
Cherries, Tart (RTP)		172	6,983	6,141	69,864
Cherries, Sweet	1	77	860	3,047	10,160
Peaches	26	1,181	31	38,139	53,068
Raspberries, Red	56	155	25	29,313	33,104
Strawberries, Total	697	20,360	110	168,016	213,408
Other Frozen Fruit	154	12,797	2,055	90,829	308,967

See footnote(s) at end of table.

--continued

**Stocks in Cold Storage: By Commodity, Region,  
and United States, February 28, 2005 (continued)**

Commodity	New England	Middle Atlantic	East North Central	West North Central	South Atlantic
	<i>1,000 Pounds</i>	<i>1,000 Pounds</i>	<i>1,000 Pounds</i>	<i>1,000 Pounds</i>	<i>1,000 Pounds</i>
Frozen Juice					
Orange Juice Conc. <sup>2</sup>	18		1,313	281	1,515,356
Other Juice Concentrate	23,800	29,224	21,514	2,121	119,743
Frozen Vegetables <sup>3</sup>					
Asparagus		637	4,523	84	125
Limas, Fordhook		2,039	947		468
Limas, Baby		7,898	1,363	1	8,641
Green Beans, Reg. Cut		20,671	32,590	858	14,207
Green Beans, Fr. Style		3,869	5,819	160	1,075
Broccoli, Spears		6,886	6,085		3,482
Broccoli, Chopped & Cut		9,703	5,930	2,276	6,412
Brussels Sprouts		2,429	1,576	1	2,655
Carrots, Diced		9,907	24,787	188	5,781
Carrots, Other		16,240	22,147	527	5,082
Cauliflower		3,703	2,973	150	1,285
Corn, Cut		36,564	58,364	20,205	17,876
Corn, Cob		12,104	23,881	13,289	9,468
Mixed Vegetables		5,935	7,993	54	3,039
Okra		1,197	468		4,048
Onion Rings		293	2,223	940	1,246
Onions, Other		5,613	3,666	268	1,728
Blackeye Peas		209	64		660
Green Peas		24,210	23,555	7,601	5,709
Peas & Carrots Mixed		1,173	965	1	362
Spinach		6,327	2,097	23	2,510
Squash, Summer/Zucchini		4,951	15,582	1	3,680
Southern Greens		1,470	271	1	2,337
Other Vegetables		37,366	43,870	8,458	18,083
Potatoes					
French Fries	33,923	18,244	50,489	111,966	28,804
Other Frozen	4,609	11,870	28,493	7,877	2,341
Meat					
Frozen Beef					
Boneless <sup>4</sup>	975	43,511	43,688	95,741	34,748
Beef Cuts <sup>5</sup>	164	2,489	8,879	7,485	6,368
Frozen Pork					
Ribs <sup>6</sup>	391	1,520	27,812	44,779	15,702
Trimmings <sup>7</sup>		287	10,238	24,984	2,709
Other <sup>8</sup>	1,481	652	10,247	55,908	12,607
Other					
Veal		600	505	74	40
Lamb & Mutton		4,074	940	28	142

See footnote(s) at end of table.

--continued

**Stocks in Cold Storage: By Commodity, Region,  
and United States, February 28, 2005 (continued)**

Commodity	East South Central	West South Central	Mountain	Pacific	US Total
	<i>1,000 Pounds</i>	<i>1,000 Pounds</i>	<i>1,000 Pounds</i>	<i>1,000 Pounds</i>	<i>1,000 Pounds</i>
Frozen Juice					
Orange Juice Concentrate	50	3,406	1,341	57,156	1,578,921
Other Juice Concentrate	77	21,544	2,191	89,499	309,713
Frozen Vegetables <sup>3</sup>					
Asparagus		271	7	2,559	8,206
Limas, Fordhook		97		3,167	6,718
Limas, Baby		2,026	2,510	24,379	46,818
Green Beans, Reg. Cut		1,125	558	73,715	143,724
Green Beans, Fr. Style		165	14	6,532	17,634
Broccoli, Spears		16,357	146	12,312	45,268
Broccoli, Chopped & Cut		17,854	366	23,238	65,779
Brussels Sprouts		240		15,065	21,966
Carrots, Diced		1,648	62	64,770	107,143
Carrots, Other		6,788	383	72,207	123,374
Cauliflower		7,064	312	21,216	36,703
Corn, Cut		2,645	1,281	277,609	414,544
Corn, Cob		1,267	25	139,513	199,547
Mixed Vegetables		7,009	18	25,326	49,374
Okra		18,214		953	24,880
Onion Rings		128	348	511	5,689
Onions, Other		1,361	3,359	22,507	38,502
Blackeye Peas		429		483	1,845
Green Peas		1,944	12,776	106,795	182,590
Peas & Carrots Mixed		934	12	2,182	5,629
Spinach		12,128	182	13,655	36,922
Squash, Summer/Zucchini		4,251	760	20,797	50,022
Southern Greens		12,046		1,593	17,718
Other Vegetables		26,962	8,669	200,035	343,443
Potatoes					
French Fries	8,268	17,689	209,865	424,708	903,956
Other Frozen	1,612	24,981	58,167	108,912	248,862
Meat					
Frozen Beef					
Boneless <sup>4</sup>	5,762	71,353	8,971	46,781	351,530
Beef Cuts <sup>5</sup>	1,604	7,843	9,359	4,564	48,755
Frozen Pork					
Ribs <sup>6</sup>	2,412	3,641	130	4,985	101,372
Trimmings <sup>7</sup>	176	2,674	7	398	41,473
Other <sup>8</sup>	2,681	2,326	274	1,051	87,227
Other					
Veal	10	84		1,416	2,729
Lamb & Mutton		421	70	1,910	7,585

<sup>1</sup> East North Central combined with South Atlantic. Mountain and West North Central combined with West South Central.

<sup>2</sup> Middle Atlantic combined with South Atlantic.

<sup>3</sup> New England combined with Middle Atlantic. East South Central combined with South Atlantic.

<sup>4</sup> Includes all boxed boneless beef, such as ground beef, roasts, steaks, loins, strips, rounds, trimmings, etc. Variety meats (edible offal), such as tongues, livers, hearts, kidneys, and other organs removed from slaughtered beef, are included as miscellaneous freezer stocks.

<sup>5</sup> Includes all boxed primal beef cuts, bone-in.

<sup>6</sup> Includes spareribs and backribs.

<sup>7</sup> Includes 42% regular trimmings, 72% special trimmings, boneless picnic meat, jowls, neckbone trimmings, blade, cheek, head, and shank meat, etc. Packaged bacon, sausage, and processed items, such as hot dogs and luncheon meats, are included in miscellaneous cooler or freezer stocks.

<sup>8</sup> Includes ears, tails, feet, neckbones and snouts.

**Stocks in Cold Storage: By Commodity, Region,  
and United States, March 31, 2005**

Commodity	New England	Middle Atlantic	East North Central	West North Central	South Atlantic
	<i>1,000 Pounds</i>	<i>1,000 Pounds</i>	<i>1,000 Pounds</i>	<i>1,000 Pounds</i>	<i>1,000 Pounds</i>
Total Fresh Apples	11,064	254,839	140,153	7	104,871
Nuts					
Shelled		21	31	26	315,720
Peanuts		21	31	26	315,720
Pecans <sup>1</sup>	107	55			9,368
In-Shell					
Pecans <sup>1</sup>					14,369
Dairy Products					
Natural Cheese					
American, Total	21,386	50,599	208,948	118,389	3,174
Other Natural Cheese	350	9,704	119,807	52,596	106
Frozen Poultry					
Chicken					
Broilers, Fryers					
Roasters (Whole)		1,851	426	786	4,099
Hens, Mature Chickens	18	239	111	218	639
Other	766	15,711	19,208	30,261	214,443
Total Chicken	784	17,801	19,745	31,265	219,181
Turkeys					
Whole Turkeys	201	4,156	1,243	50,736	49,470
Other Turkey	290	7,142	17,170	50,793	69,296
Total Turkey	491	11,298	18,413	101,529	118,766
Ducks		98	114		6
Total Poultry	1,275	29,197	38,272	132,794	337,953
Frozen Fruit					
Apples	29	21,966	54,748	114	373
Blueberries	7,513	4,900	23,328	632	1,674
Cherries, Tart (RTP)	27	4,393	41,647	69	826
Cherries, Sweet		244	4,796	315	17
Peaches	88	2,155	6,039	2,636	335
Raspberries, Red	39	1,601	1,117	195	130
Strawberries, Total	69	7,630	10,031	1,389	2,336
Other Frozen Fruit	2,208	8,252	162,576	3,227	2,223

See footnote(s) at end of table.

--continued

**Stocks in Cold Storage: By Commodity, Region,  
and United States, March 31, 2005 (continued)**

Commodity	East South Central	West South Central	Mountain	Pacific	US Total
	<i>1,000 Pounds</i>	<i>1,000 Pounds</i>	<i>1,000 Pounds</i>	<i>1,000 Pounds</i>	<i>1,000 Pounds</i>
Total Fresh Apples		6,300	17,765	2,261,038	2,796,037
Nuts					
Shelled					
Peanuts	28,222	109,732	102	231	454,085
Pecans <sup>1</sup>	1,106	17,614		211	28,461
In-Shell					
Pecans <sup>1</sup>	1,096	113,742			129,207
Dairy Products					
Natural Cheese					
American, Total	211	1,934	33,522	83,816	521,979
Other Natural Cheese	2,393	199	5,605	11,586	202,346
Frozen Poultry					
Chicken					
Broilers, Fryers					
Roasters (Whole)	6,069	11,786	309	1,503	26,829
Hens, Mature Chickens	10	692	16	933	2,876
Other	136,449	186,026	3,698	35,541	642,103
Total Chicken	142,528	198,504	4,023	37,977	671,808
Turkeys					
Whole Turkeys	2,559	77,832	7,132	16,731	210,060
Other Turkey	946	28,654	14,532	19,649	208,472
Total Turkey	3,505	106,486	21,664	36,380	418,532
Ducks	5	45	23	29	320
Total Poultry	146,038	305,035	25,710	74,386	1,090,660
Frozen Fruit					
Apples	5	992	48	10,853	89,128
Blueberries	98	613	62	14,726	53,546
Cherries, Tart (RTP)		105	4,389	4,598	56,054
Cherries, Sweet	1	71	552	2,853	8,849
Peaches	21	1,189	26	30,350	42,839
Raspberries, Red	52	217	24	27,116	30,491
Strawberries, Total	568	24,037	111	127,100	173,271
Other Frozen Fruit	125	13,019	1,814	75,465	268,909

See footnote(s) at end of table.

--continued

**Stocks in Cold Storage: By Commodity, Region,  
and United States, March 31, 2005 (continued)**

Commodity	New England	Middle Atlantic	East North Central	West North Central	South Atlantic
	<i>1,000 Pounds</i>	<i>1,000 Pounds</i>	<i>1,000 Pounds</i>	<i>1,000 Pounds</i>	<i>1,000 Pounds</i>
Frozen Juice					
Orange Juice Conc. <sup>2</sup>	41		1,281	280	1,513,380
Other Juice Concentrate	25,030	26,869	23,957	2,568	125,444
Frozen Vegetables <sup>3</sup>					
Asparagus		705	3,911	59	112
Limas, Fordhook		2,016	1,045		410
Limas, Baby		6,935	1,732	1	7,479
Green Beans, Reg. Cut		16,573	25,852	789	12,001
Green Beans, Fr. Style		2,732	4,398	98	866
Broccoli, Spears		6,967	5,611	1	3,484
Broccoli, Chopped & Cut		9,500	5,275	1,863	6,117
Brussels Sprouts		2,329	1,198	1	2,245
Carrots, Diced		8,773	22,235	164	5,252
Carrots, Other		14,193	19,214	604	4,688
Cauliflower		3,951	2,435	204	1,088
Corn, Cut		30,819	47,977	18,984	16,202
Corn, Cob		10,104	19,308	10,571	7,690
Mixed Vegetables		4,547	6,343	39	2,388
Okra		1,099	385		2,990
Onion Rings		255	2,383	876	1,410
Onions, Other		5,921	4,729	285	1,934
Blackeye Peas		292	67		715
Green Peas		22,705	20,851	6,599	5,012
Peas & Carrots Mixed		994	967	1	333
Spinach		6,040	2,097	77	2,785
Squash, Summer/Zucchini		4,552	14,297	1	3,272
Southern Greens		1,654	308	2	2,493
Other Vegetables		34,380	39,526	7,830	16,852
Potatoes					
French Fries	29,553	21,888	48,892	107,261	26,358
Other Frozen	4,684	13,845	30,270	6,879	2,605
Meat					
Frozen Beef					
Boneless <sup>4</sup>	1,216	42,555	38,007	90,084	34,133
Beef Cuts <sup>5</sup>	273	2,218	5,199	7,077	5,850
Frozen Pork					
Ribs <sup>6</sup>	350	1,552	27,241	42,223	14,417
Trimmings <sup>7</sup>	32	255	9,448	28,211	3,847
Other <sup>8</sup>	1,492	540	10,416	56,533	14,668
Other					
Veal		620	467	72	38
Lamb & Mutton		4,146	893	28	159

See footnote(s) at end of table.

--continued

**Stocks in Cold Storage: By Commodity, Region,  
and United States, March 31, 2005 (continued)**

Commodity	East South Central	West South Central	Mountain	Pacific	US Total
	<i>1,000 Pounds</i>	<i>1,000 Pounds</i>	<i>1,000 Pounds</i>	<i>1,000 Pounds</i>	<i>1,000 Pounds</i>
Frozen Juice					
Orange Juice Concentrate	30	5,752	1,419	58,228	1,580,411
Other Juice Concentrate	79	21,289	1,593	91,499	318,328
Frozen Vegetables <sup>3</sup>					
Asparagus		350	30	2,618	7,785
Limas, Fordhook		90		2,823	6,384
Limas, Baby		1,905	2,294	18,380	38,726
Green Beans, Reg. Cut		1,012	434	64,510	121,171
Green Beans, Fr. Style		123	37	5,830	14,084
Broccoli, Spears		14,467	137	11,930	42,597
Broccoli, Chopped & Cut		19,921	527	21,982	65,185
Brussels Sprouts		2,294	1	12,938	21,006
Carrots, Diced		1,683	127	55,643	93,877
Carrots, Other		9,188	178	64,613	112,678
Cauliflower		6,835	169	16,304	30,986
Corn, Cut		2,442	1,207	248,162	365,793
Corn, Cob		1,437	12	112,401	161,523
Mixed Vegetables		8,230	11	22,871	44,429
Okra		12,258		902	17,634
Onion Rings		90	260	383	5,657
Onions, Other		1,446	3,673	24,002	41,990
Blackeye Peas		634		346	2,054
Green Peas		1,788	12,245	90,766	159,966
Peas & Carrots Mixed		926	12	1,910	5,143
Spinach		9,483	97	21,488	42,067
Squash, Summer/Zucchini		3,793	672	18,164	44,751
Southern Greens		14,631		1,393	20,481
Other Vegetables		28,132	7,781	188,009	322,510
Potatoes					
French Fries	7,413	17,410	175,837	420,912	855,524
Other Frozen	1,920	26,974	42,735	109,514	239,426
Meat					
Frozen Beef					
Boneless <sup>4</sup>	4,025	67,287	8,908	43,824	330,039
Beef Cuts <sup>5</sup>	944	7,979	9,262	4,795	43,597
Frozen Pork					
Ribs <sup>6</sup>	2,374	2,958	133	2,068	93,316
Trimnings <sup>7</sup>	211	3,358	7	525	45,894
Other <sup>8</sup>	2,756	2,587	247	1,176	90,415
Other					
Veal	5	123		1,347	2,672
Lamb & Mutton		564	70	1,797	7,657

<sup>1</sup> East North Central combined with South Atlantic. Mountain and West North Central Combined with West South Central.

<sup>2</sup> Middle Atlantic combined with South Atlantic.

<sup>3</sup> New England combined with Middle Atlantic. East South Central combined with South Atlantic.

<sup>4</sup> Includes all boxed boneless beef, such as ground beef, roasts, steaks, loins, strips, rounds, trimmings, etc. Variety meats (edible offal), such as tongues, livers, hearts, kidneys, and other organs removed from slaughtered beef, are included as miscellaneous freezer stocks.

<sup>5</sup> Includes all boxed primal beef cuts, bone-in.

<sup>6</sup> Includes spareribs and backribs.

<sup>7</sup> Includes 42% regular trimmings, 72% special trimmings, boneless picnic meat, jowls, neckbone trimmings, blade, cheek, head, and shank meat, etc. Packaged bacon, sausage, and processed items, such as hot dogs and luncheon meats, are included in miscellaneous cooler or freezer stocks.

<sup>8</sup> Includes ears, tails, feet, neckbones and snouts.

**Public General Warehouses: Cold Storage Space Occupied  
by Region and United States, March 2005**

Region	Cooler				Freezer			
	Usable Space	Usable Space Occupied			Usable Space	Usable Space Occupied		
	Mar 31 2005	Mar 31 2004	Feb 28 2005	Mar 31 2005	Mar 31 2005	Mar 31 2004	Feb 28 2005	Mar 31 2005
	<i>1,000 Cu Ft</i>	<i>Percent</i>	<i>Percent</i>	<i>Percent</i>	<i>1,000 Cu Ft</i>	<i>Percent</i>	<i>Percent</i>	<i>Percent</i>
New England	1,791	86	90	88	16,899	73	75	76
Middle Atlantic	48,944	55	64	59	140,688	52	67	67
E. North Central	65,953	49	56	54	260,420	50	57	53
W. North Central	46,640	37	56	57	158,488	56	67	65
South Atlantic	54,097	27	45	47	198,159	50	51	54
E. South Central	9,795	47	63	68	70,972	36	46	48
W. South Central	29,030	23	29	33	139,458	47	47	45
Mountain	12,154	37	48	52	61,444	62	68	67
Pacific	50,850	35	46	46	316,845	60	66	61
US	319,254	39	51	51	1,363,373	53	59	58

## Cold Storage Regions





**Apples in Cold Storage: By State  
and United States, March 2005**

State	All Warehouses		
	Mar 31 2004	Feb 28 2005	Mar 31 2005
	<i>1,000 Pounds</i>	<i>1,000 Pounds</i>	
CA	24,897	28,024	18,177
MI	119,642	185,138	137,500
N ENG	11,340	16,590	11,064
NY	158,634	187,824	143,094
OH	2,260	2,820	1,440
OR	14,244	24,254	18,919
PA	125,997	154,552	111,720
VA	73,452	90,046	63,812
WA	1,386,798	2,864,862	2,223,942
WV	37,199	49,312	33,005
Other States	24,543	49,230	33,364
US	1,979,006	3,652,652	2,796,037

**Survey Procedures:** Questionnaires are mailed about the 24th of each month to all operators on the list of approximately 1,400 public and private cold storage warehouses. In addition, apple data are obtained from special surveys and other sources (State Departments of Agriculture, U.S. Apple Association, etc.). All survey data represent stocks as of the end of the month.

Data are collected from warehouses artificially cooled to a temperature of 50 degrees Fahrenheit or lower, and whose food products are normally stored for 30 days or more. All food items in these facilities are reported regardless of the number of days stored at the time of the report. Also included are specialized storage facilities meeting the 30 day requirement, such as fruit houses, dairy manufacturing plants, frozen fruit, fruit juice, and vegetable processors, and poultry and meat packing plants. Excluded are stocks in space maintained by wholesalers, jobbers, distributors, chain stores, locker plants containing individual lockers, meat packer branch houses, and frozen food processors whose entire inventories are turned over more than once a month.

**Estimating Procedures:** Data for reporting firms are added to estimates for non-reporting firms to obtain regional and National totals. Estimates for non-reporting firms are obtained by multiplying the previous month's figure by a percent change from the previous month. The percent change is calculated for each item from totals of the current and previous month summed from firms that reported both months.

**Revision Policy:** Data are revised the following month based on late reports or corrected data. Final figures are published in the annual summary in February of the following year.

**Reliability:** Reports are received from 900 firms each month which represent about 70 percent of the total capacity. Firms that are not on the list or firms who have never reported are not represented in the data. Monthly data can vary due to different firms reporting month to month. Survey data are also subject to non-sampling errors such as omissions and mistakes in reporting and in processing the data. While these errors cannot be measured directly, they are minimized by carefully reviewing all reported data for consistency and reasonableness.

The United States Department of Agriculture (USDA) prohibits discrimination in all its programs on the basis of race, color, national origin, gender, religion, age, disability, political beliefs, sexual orientation, and marital or family status. (Not all prohibited bases apply to all programs.) Persons with disabilities who require alternative means for communication of program information (braille, large print, audiotape, etc.) should contact the USDA's TARGET Center at 202-720-2600 (voice and TDD).

To file a complaint of discrimination, write USDA, Director, Office of Civil Rights, Room 326-W, Whitten Building, 1400 Independence Avenue, SW, Washington, D.C., 20250-9410, or call 202-720-5964 (voice or TDD). USDA is an equal opportunity provider and employer.

## ACCESS TO REPORTS!!

---

For your convenience, there are several ways to obtain NASS reports, data products, and services:

### INTERNET ACCESS

All NASS reports are available free of charge on the worldwide Internet. For access, connect to the Internet and go to the NASS Home Page at: [www.usda.gov/nass/](http://www.usda.gov/nass/). Select "Today's Reports" or Publications and then Reports Calendar or Publications and then Search, by Title or Subject.

### E-MAIL SUBSCRIPTION

All NASS reports are available by subscription free of charge direct to your e-mail address. Starting with the NASS Home Page at [www.usda.gov/nass/](http://www.usda.gov/nass/), click on **Publications**, then click on the **Subscribe by E-mail** button which takes you to the page describing e-mail delivery of reports. Finally, click on **Go to the Subscription Page** and follow the instructions.

-----

### PRINTED REPORTS OR DATA PRODUCTS

**CALL OUR TOLL-FREE ORDER DESK: 800-999-6779 (U.S. and Canada)**  
**Other areas, please call 703-605-6220      FAX: 703-605-6900**  
**(Visa, MasterCard, check, or money order acceptable for payment.)**

-----

### ASSISTANCE

For **assistance** with general agricultural statistics or further information about NASS or its products or services, contact the **Agricultural Statistics Hotline** at **800-727-9540**, 7:30 a.m. to 4:00 p.m. ET, or e-mail: [nass@nass.usda.gov](mailto:nass@nass.usda.gov).

---