



# Cold Storage

---

Released May 20, 2005, by the National Agricultural Statistics Service (NASS), Agricultural Statistics Board, U.S. Department of Agriculture. For information on *Cold Storage* call Perry Game at (202) 720-8784, office hours 7:00 a.m. to 3:30 p.m. ET.

## Highlights

**Frozen food stocks** in refrigerated warehouses on April 30, 2005 were greater than year earlier levels for pork, vegetables, chicken, butter and cheese.

Butter stocks were up 23 percent from last month and up 5 percent from a year ago.

**Total red meat supplies** in freezers were down 3 percent from last month, but up 3 percent from last year. Frozen pork supplies were up 4 percent from last month and up 26 percent from the previous year. Stocks of pork bellies were up 10 percent from last month and up 85 percent from last year.

**Total frozen poultry supplies** on April 30, 2005 were 5 percent above the previous month, but down 4 percent from a year ago. Total stocks of chicken were up 3 percent from the previous month and up 8 percent from last year. Total pounds of turkey in freezers were up 8 percent from last month, but down 18 percent from April 30, 2004.

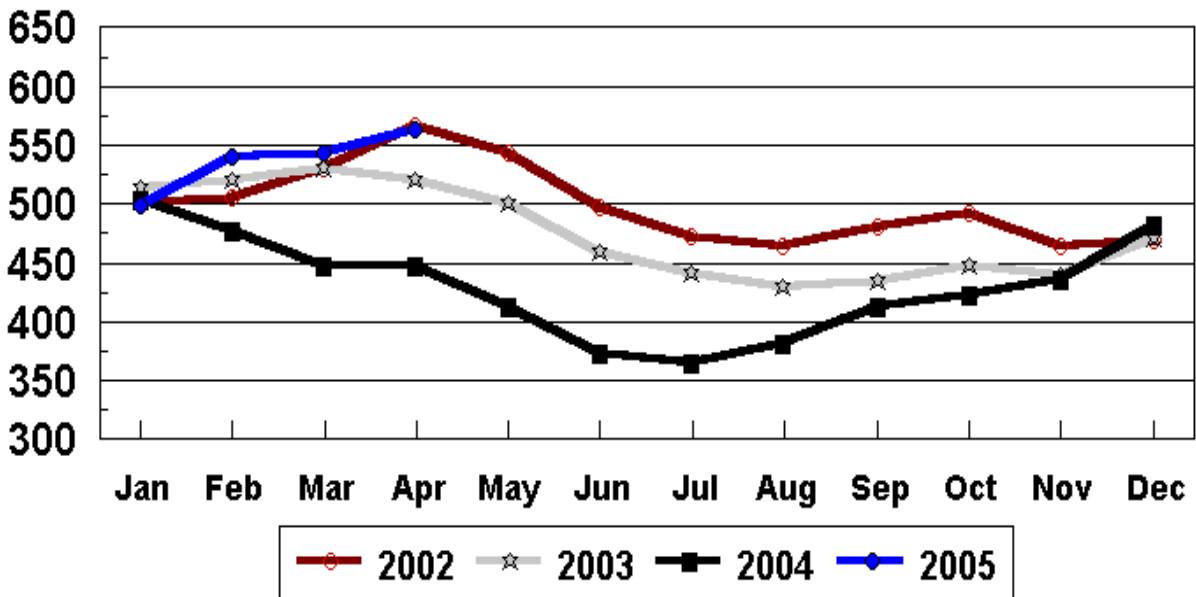


## Contents

	<b>Page</b>
Stocks in Cold Storage: By Commodity, United States, April 2005 .....	1
Stocks in Cold Storage: By Commodity, Region, and United States, March 31, 2005 .....	5
Stocks in Cold Storage: By Commodity, Region, and United States, April 30, 2005 .....	9
Public General Warehouses: Cold Storage Space Occupied by Region and United States, April 2005 .....	13
Apples in Cold Storage: By State and United States, April 2005 .....	14
Survey and Estimating Procedures, Revision Policy and Reliability .....	15
Access to Reports .....	16

## Total Frozen Pork-United States Cold Storage Stocks, 2002-2005

Million Pounds



**Stocks in Cold Storage: By Commodity,  
United States, April 2005**

Commodity	Stocks in All Warehouses			Percent of		Public Warehouse Stocks
	Apr 30, 2004	Mar 31, 2005	Apr 30, 2005	Apr 2004	Mar 2005	Apr 30, 2005
	<i>1,000 Pounds</i>	<i>1,000 Pounds</i>	<i>1,000 Pounds</i>	<i>Percent</i>	<i>Percent</i>	<i>1,000 Lbs</i>
Apples						
Regular Storage	89,851	207,320	93,610	104	45	
Controlled Atmosphere	1,358,010	2,588,717	1,957,788	144	76	
Total	1,447,861	2,796,037	2,051,398	142	73	175
Pears						
Bartlett	2,052	255	225	11	88	
Other Varieties	79,305	104,889	62,045	78	59	
Total	81,357	105,144	62,270	77	59	222
Nuts						
Shelled						
Peanuts	375,658	473,963	494,485	132	104	
Pecans	32,480	27,980	30,813	95	110	
Other Shelled	150,783	134,980	124,262	82	92	
Total	558,921	636,923	649,560	116	102	271,290
In-Shell						
Peanuts	22,215	33,140	36,966	166	112	
Pecans	145,237	127,509	105,749	73	83	
Other In-Shell	5,831	8,043	7,874	135	98	
Total	173,283	168,692	150,589	87	89	42,915
Dairy Products						
Butter, Total	155,718	132,460	163,426	105	123	149,073
(Government Owned)	400	276	209	52	76	
Natural Cheese						
American, Total	526,389	518,400	548,499	104	106	
(Government Owned)	9,691	1,504	1,843	19	123	
Swiss	26,910	22,361	21,055	78	94	
Other Natural Cheese	214,269	200,978	203,103	95	101	
Total	767,568	741,739	772,657	101	104	425,975
Eggs, Frozen						
Whites	2,837	2,845	2,841	100	100	
Yolks	966	828	651	67	79	
Whole & Mixed	13,193	12,108	12,551	95	104	
Unclassified	3,910	2,767	2,809	72	102	
Total	20,906	18,548	18,852	90	102	18,350
Frozen Poultry						
Chicken						
Broilers, Fryers						
Roasters (Whole)	23,295	26,879	29,091	125	108	
Hens, Mature Chickens	4,387	2,876	1,795	41	62	
Breasts & Breast Meat	91,045	150,176	147,028	161	98	
Drumsticks	16,508	10,445	9,299	56	89	
Leg Quarters	126,925	59,810	56,732	45	95	
Legs	11,631	10,975	11,745	101	107	
Thigh & Thigh Quarters	8,156	13,226	13,105	161	99	
Thigh Meat	15,018	10,663	13,449	90	126	
Wings	26,500	42,512	43,273	163	102	
Paws and Feet	19,453	12,667	10,641	55	84	
Other	302,903	332,457	358,552	118	108	
Total Chicken	645,821	672,686	694,710	108	103	

See footnote(s) at end of table.

--continued

**Stocks in Cold Storage: By Commodity,  
United States, April 2005**

Commodity	Stocks in All Warehouses			Percent of		Public Warehouse Stocks
	Apr 30, 2004	Mar 31, 2005	Apr 30, 2005	Apr 2004	Mar 2005	Apr 30, 2005
	<i>1,000 Pounds</i>	<i>1,000 Pounds</i>	<i>1,000 Pounds</i>	<i>Percent</i>	<i>Percent</i>	<i>1,000 Lbs</i>
Turkeys						
Toms (Whole Carcasses)	159,060	124,291	140,260	88	113	
Hens (Whole Carcasses)	108,611	85,744	90,768	84	106	
Whole Turkeys	267,671	210,035	231,028	86	110	
Other Turkey	281,102	206,811	219,399	78	106	
Total Turkey	548,773	416,846	450,427	82	108	353,404
Ducks	1,020	320	272	27	85	
Total Poultry	1,195,614	1,089,852	1,145,409	96	105	1,002,407
Frozen Fruit						
Apples	56,921	89,064	91,459	161	103	
Apricots	4,367	4,175	4,170	95	100	
Blackberries, Total	12,235	18,655	13,964	114	75	
IQF	8,604	12,790	9,124	106	71	
Pails and Tubs	1,230	2,738	2,675	217	98	
Barrels, 400 lbs net	1,674	2,854	1,946	116	68	
Concentrate	727	273	219	30	80	
Blueberries	43,190	53,620	41,429	96	77	
Boysenberries	563	685	692	123	101	
Cherries, Tart (RTP)	32,281	56,118	47,388	147	84	
Cherries, Tart (Juice)	1,001	1,307	997	100	76	
Cherries, Sweet	4,985	8,924	7,129	143	80	
Grapes	4,172	2,599	2,373	57	91	
Peaches	34,341	42,834	34,325	100	80	
Raspberries, Black	622	448	319	51	71	
Raspberries, Red, Total	22,508	30,502	25,969	115	85	
IQF	11,830	13,722	13,365	113	97	
Pails and Tubs	5,307	6,918	5,787	109	84	
Barrels, 400 lbs net	4,597	8,858	5,942	129	67	
Concentrate	774	1,004	875	113	87	
Strawberries, Total	227,417	173,519	192,615	85	111	
IQF and Poly	99,398	80,777	95,611	96	118	
Pails and Tubs	67,245	56,856	59,926	89	105	
Barrels and Drums	48,062	27,716	27,713	58	100	
Juice Stock	12,712	8,170	9,365	74	115	
Other Frozen Fruit	260,202	271,043	240,570	92	89	
Total	704,805	753,493	703,399	100	93	610,674
Frozen Juice						
Orange Juice Conc. <sup>1</sup>	1,987,553	1,578,173	1,662,658	84	105	
(Gallon Equivalent)	200,844	159,476	168,013			
Other Juice Concentrate	328,520	318,257	314,880	96	99	
Total	2,316,073	1,896,430	1,977,538	85	104	224,438

See footnote(s) at end of table.

--continued

**Stocks in Cold Storage: By Commodity,  
United States, April 2005**

Commodity	Stocks in All Warehouses			Percent of		Public Warehouse Stocks
	Apr 30, 2004	Mar 31, 2005	Apr 30, 2005	Apr 2004	Mar 2005	Apr 30, 2005
	<i>1,000 Pounds</i>	<i>1,000 Pounds</i>	<i>1,000 Pounds</i>	<i>Percent</i>	<i>Percent</i>	<i>1,000 Lbs</i>
Frozen Vegetables						
Asparagus	7,385	7,795	6,931	94	89	
Limas, Fordhook	2,755	6,376	4,648	169	73	
Limas, Baby	29,669	38,605	34,209	115	89	
Green Beans, Reg. Cut	61,740	118,892	100,578	163	85	
Green Beans, Fr. Style	12,383	16,416	14,085	114	86	
Broccoli, Spears	45,533	42,963	49,937	110	116	
Broccoli, Chopped & Cut	55,759	63,993	66,137	119	103	
Brussels Sprouts	14,160	21,013	18,925	134	90	
Carrots, Diced	65,481	93,930	86,602	132	92	
Carrots, Other	98,657	112,769	107,386	109	95	
Cauliflower	15,871	30,410	24,630	155	81	
Corn, Cut	314,684	362,375	313,429	100	86	
Corn, Cob	163,456	161,320	131,413	80	81	
Mixed Vegetables	46,368	48,248	50,716	109	105	
Okra	18,306	16,146	11,582	63	72	
Onion Rings	6,730	5,656	6,308	94	112	
Onions, Other	32,634	43,039	44,307	136	103	
Blackeye Peas	3,521	2,253	2,420	69	107	
Green Peas	78,373	159,491	137,099	175	86	
Peas & Carrots Mixed	5,655	5,150	4,953	88	96	
Spinach	81,836	42,510	50,659	62	119	
Squash, Summer/Zucchini	26,928	44,709	40,194	149	90	
Southern Greens	19,289	20,479	18,896	98	92	
Other Vegetables	260,748	303,095	283,473	109	94	
Total	1,467,921	1,767,633	1,609,517	110	91	1,152,511
Potatoes						
French Fries	874,233	853,887	922,192	105	108	
Other Frozen	284,469	238,012	247,421	87	104	
Total	1,158,702	1,091,899	1,169,613	101	107	883,519

See footnote(s) at end of table.

--continued

**Stocks in Cold Storage: By Commodity,  
United States, April 2005**

Commodity	Stocks in All Warehouses			Percent of		Public Warehouse Stocks
	Apr 30, 2004	Mar 31, 2005	Apr 30, 2005	Apr 2004	Mar 2005	Apr 30, 2005
	<i>1,000 Pounds</i>	<i>1,000 Pounds</i>	<i>1,000 Pounds</i>	<i>Percent</i>	<i>Percent</i>	<i>1,000 Lbs</i>
<b>Meat</b>						
Frozen Beef						
Boneless <sup>2</sup>	367,945	329,377	283,817	77	86	
Beef Cuts <sup>3</sup>	53,235	43,027	42,880	81	100	
Total	421,180	372,404	326,697	78	88	324,686
(Government Owned)	4,818	6,954	5,008	104	72	
Frozen Pork						
Picnics, Bone-in	12,333	12,141	12,747	103	105	
Hams, Total	56,329	66,218	72,627	129	110	70,264
Bone-in	25,625	29,395	38,583	151	131	37,539
Boneless <sup>4</sup>	30,704	36,823	34,044	111	92	32,725
Bellies	48,363	81,265	89,505	185	110	
Loins, Total	36,064	46,068	43,917	122	95	41,872
Bone-in	20,186	22,875	22,692	112	99	
Boneless <sup>5</sup>	15,878	23,193	21,225	134	92	
Ribs <sup>6</sup>	68,126	93,469	93,016	137	100	
Butts	9,121	14,454	13,411	147	93	
Trimming <sup>7</sup>	45,719	45,844	50,763	111	111	
Other <sup>8</sup>	73,011	90,395	89,254	122	99	
Variety Meats <sup>9</sup>	43,834	41,127	38,624	88	94	
Unclassified <sup>10</sup>	55,650	52,696	59,600	107	113	
Total	448,550	543,677	563,464	126	104	515,024
(Government Owned)	876	521	594	68	114	
Other						
Veal	5,843	2,613	2,736	47	105	
Lamb & Mutton	3,251	7,650	9,022	278	118	
Total	9,094	10,263	11,758	129	115	11,684
Canned						
Canned Hams	4,387	2,393	2,345	53	98	
Other Canned Meat	389	2,826	2,284	587	81	
Total	4,776	5,219	4,629	97	89	4,596
Total	883,600	931,563	906,548	103	97	855,990
<b>Miscellaneous</b>						
Cooler	614,087	569,474	554,291	90	97	235,071
Freezer	1,823,832	2,048,028	2,156,186	118	105	2,088,967
Total	2,437,919	2,617,502	2,710,477	111	104	2,324,038
<b>Commodities</b>						
Stored in Coolers	3,661,526	5,034,593	4,259,382	116	85	1,142,574
Stored in Freezers	9,708,722	9,713,322	9,831,871	101	101	6,981,333
Total	13,370,248	14,747,915	14,091,253	105	96	8,123,907

<sup>1</sup> Adjusted to 42.0 degrees Brix equivalent (9.896 pounds per gallon).

<sup>2</sup> Includes all boxed boneless beef, such as ground beef, roasts, steaks, loins, strips, rounds, trimmings, etc. Variety meats (edible offal), such as tongues, livers, hearts, kidneys, and other organs removed from slaughtered beef, are included as miscellaneous freezer stocks.

<sup>3</sup> Includes all boxed primal beef cuts, bone-in.

<sup>4</sup> Includes full ham, bone removed and individual muscles separated.

<sup>5</sup> Includes pork tenderloins.

<sup>6</sup> Includes spareribs and backribs.

<sup>7</sup> Includes 42% regular trimmings, 72% special trimmings, boneless picnic meat, jowls, neckbone trimmings, blade, cheek, head, and shank meat, etc. Packaged bacon, sausage, and processed items, such as hot dogs and luncheon meats, are included in miscellaneous cooler or freezer stocks.

<sup>8</sup> Includes ears, tails, feet, neckbones and snouts.

<sup>9</sup> Includes tongues, kidneys, livers, stomachs, hearts, chitterlings, salivary glands, and other organs removed from slaughtered hogs.

<sup>10</sup> Includes product unable to be classified elsewhere in this report.

**Stocks in Cold Storage: By Commodity, Region,  
and United States, March 31, 2005**

Commodity	New England	Middle Atlantic	East North Central	West North Central	South Atlantic
	<i>1,000 Pounds</i>	<i>1,000 Pounds</i>	<i>1,000 Pounds</i>	<i>1,000 Pounds</i>	<i>1,000 Pounds</i>
Total Fresh Apples	11,064	254,839	140,153	7	104,871
Nuts					
Shelled					
Peanuts		21	31	26	335,598
Pecans <sup>1</sup>	107	55			8,611
In-Shell					
Pecans <sup>1</sup>					13,961
Dairy Products					
Natural Cheese					
American, Total	21,386	50,599	208,893	118,527	3,174
Other Natural Cheese	350	9,704	120,710	52,241	106
Frozen Poultry					
Chicken					
Broilers, Fryers					
Roasters (Whole)		1,851	426	786	4,099
Hens, Mature Chickens	18	239	111	218	639
Other	766	15,711	18,960	32,561	212,827
Total Chicken	784	17,801	19,497	33,565	217,565
Turkeys					
Whole Turkeys	201	4,156	1,216	50,738	49,470
Other Turkey	290	7,142	16,727	49,576	69,296
Total Turkey	491	11,298	17,943	100,314	118,766
Ducks		98	114		6
Total Poultry	1,275	29,197	37,554	133,879	336,337
Frozen Fruit					
Apples	29	21,966	54,748	114	374
Blueberries	7,513	4,900	23,391	632	1,674
Cherries, Tart (RTP)	27	4,393	41,662	69	826
Cherries, Sweet		244	4,817	315	17
Peaches	88	2,155	6,034	2,636	335
Raspberries, Red	39	1,601	1,129	195	130
Strawberries, Total	69	7,630	10,131	1,389	2,336
Other Frozen Fruit	2,208	8,252	162,587	3,227	2,180

See footnote(s) at end of table.

--continued



**Stocks in Cold Storage: By Commodity, Region,  
and United States, March 31, 2005 (continued)**

Commodity	East South Central	West South Central	Mountain	Pacific	US Total
	<i>1,000 Pounds</i>	<i>1,000 Pounds</i>	<i>1,000 Pounds</i>	<i>1,000 Pounds</i>	<i>1,000 Pounds</i>
Total Fresh Apples		6,300	17,765	2,261,038	2,796,037
Nuts					
Shelled					
Peanuts	28,222	109,732	102	231	473,963
Pecans <sup>1</sup>	1,106	17,890		211	27,980
In-Shell					
Pecans <sup>1</sup>	1,096	112,452			127,509
Dairy Products					
Natural Cheese					
American, Total	211	1,934	33,522	80,154	518,400
Other Natural Cheese	2,393	236	4,988	10,250	200,978
Frozen Poultry					
Chicken					
Broilers, Fryers					
Roasters (Whole)	6,069	11,786	359	1,503	26,879
Hens, Mature Chickens	10	692	16	933	2,876
Other	136,449	186,026	4,094	35,537	642,931
Total Chicken	142,528	198,504	4,469	37,973	672,686
Turkeys					
Whole Turkeys	2,559	77,832	7,132	16,731	210,035
Other Turkey	946	28,654	14,531	19,649	206,811
Total Turkey	3,505	106,486	21,663	36,380	416,846
Ducks	5	45	23	29	320
Total Poultry	146,038	305,035	26,155	74,382	1,089,852
Frozen Fruit					
Apples	5	992	48	10,788	89,064
Blueberries	98	613	63	14,736	53,620
Cherries, Tart (RTP)		105	4,438	4,598	56,118
Cherries, Sweet	1	71	552	2,907	8,924
Peaches	21	1,189	26	30,350	42,834
Raspberries, Red	52	217	24	27,115	30,502
Strawberries, Total	568	24,037	112	127,247	173,519
Other Frozen Fruit	125	13,019	1,815	77,630	271,043

See footnote(s) at end of table.

--continued

**Stocks in Cold Storage: By Commodity, Region,  
and United States, March 31, 2005**

Commodity	New England	Middle Atlantic	East North Central	West North Central	South Atlantic
	<i>1,000 Pounds</i>	<i>1,000 Pounds</i>	<i>1,000 Pounds</i>	<i>1,000 Pounds</i>	<i>1,000 Pounds</i>
Frozen Juice					
Orange Juice Conc. <sup>2</sup>	41		1,258	280	1,513,381
Other Juice Concentrate	25,030	26,869	23,887	2,568	125,444
Frozen Vegetables <sup>3</sup>					
Asparagus		705	3,905	59	112
Limas, Fordhook		2,016	1,045		410
Limas, Baby		6,935	1,730	1	7,479
Green Beans, Reg. Cut		16,573	25,832	789	12,001
Green Beans, Fr. Style		2,732	4,392	98	866
Broccoli, Spears		6,967	5,595	1	3,418
Broccoli, Chopped & Cut		9,500	5,253	1,863	6,117
Brussels Sprouts		2,329	1,194	1	2,245
Carrots, Diced		8,773	22,235	164	5,252
Carrots, Other		14,193	19,210	604	4,663
Cauliflower		3,951	2,425	204	1,088
Corn, Cut		30,819	47,926	18,984	16,202
Corn, Cob		10,104	19,302	10,571	7,475
Mixed Vegetables		4,547	6,268	39	2,388
Okra		1,099	379		2,990
Onion Rings		255	2,382	876	1,410
Onions, Other		5,921	4,729	285	1,934
Blackeye Peas		292	66		715
Green Peas		22,705	20,801	6,599	5,012
Peas & Carrots Mixed		994	967	1	333
Spinach		6,040	2,097	77	2,785
Squash, Summer/Zucchini		4,552	14,296	1	3,274
Southern Greens		1,654	306	2	2,493
Other Vegetables		34,380	39,523	7,830	16,851
Potatoes					
French Fries	29,553	21,888	48,761	107,261	26,358
Other Frozen	4,684	13,845	30,141	6,879	2,595
Meat					
Frozen Beef					
Boneless <sup>4</sup>	1,216	42,555	37,889	90,084	34,133
Beef Cuts <sup>5</sup>	273	2,218	5,199	7,077	5,850
Frozen Pork					
Ribs <sup>6</sup>	350	1,552	27,230	42,385	14,417
Trimmings <sup>7</sup>	32	255	9,447	28,162	3,847
Other <sup>8</sup>	1,492	540	10,388	56,540	14,669
Other					
Veal		620	467	72	38
Lamb & Mutton		4,146	893	28	159

See footnote(s) at end of table.

--continued

**Stocks in Cold Storage: By Commodity, Region,  
and United States, March 31, 2005 (continued)**

Commodity	East South Central	West South Central	Mountain	Pacific	US Total
	<i>1,000 Pounds</i>	<i>1,000 Pounds</i>	<i>1,000 Pounds</i>	<i>1,000 Pounds</i>	<i>1,000 Pounds</i>
Frozen Juice					
Orange Juice Concentrate	30	5,752	1,419	56,012	1,578,173
Other Juice Concentrate	79	21,289	1,592	91,499	318,257
Frozen Vegetables <sup>3</sup>					
Asparagus		350	30	2,634	7,795
Limas, Fordhook		82		2,823	6,376
Limas, Baby		1,847	2,294	18,319	38,605
Green Beans, Reg. Cut		1,061	434	62,202	118,892
Green Beans, Fr. Style		141	37	8,150	16,416
Broccoli, Spears		14,915	137	11,930	42,963
Broccoli, Chopped & Cut		19,929	527	20,804	63,993
Brussels Sprouts		2,305	1	12,938	21,013
Carrots, Diced		1,731	127	55,648	93,930
Carrots, Other		9,233	178	64,688	112,769
Cauliflower		6,880	169	15,693	30,410
Corn, Cut		1,699	1,207	245,538	362,375
Corn, Cob		1,457	12	112,399	161,320
Mixed Vegetables		11,920	11	23,075	48,248
Okra		10,776		902	16,146
Onion Rings		90	260	383	5,656
Onions, Other		1,224	5,263	23,683	43,039
Blackeye Peas		834		346	2,253
Green Peas		1,521	12,245	90,608	159,491
Peas & Carrots Mixed		926	12	1,917	5,150
Spinach		9,926	97	21,488	42,510
Squash, Summer/Zucchini		3,767	672	18,147	44,709
Southern Greens		14,631		1,393	20,479
Other Vegetables		28,132	7,619	168,760	303,095
Potatoes					
French Fries	7,413	17,410	175,997	419,246	853,887
Other Frozen	1,920	26,974	42,735	108,239	238,012
Meat					
Frozen Beef					
Boneless <sup>4</sup>	4,025	67,287	8,027	44,161	329,377
Beef Cuts <sup>5</sup>	944	7,979	8,692	4,795	43,027
Frozen Pork					
Ribs <sup>6</sup>	2,374	2,958	133	2,070	93,469
Trimmings <sup>7</sup>	211	3,358	7	525	45,844
Other <sup>8</sup>	2,756	2,587	247	1,176	90,395
Other					
Veal	5	123		1,288	2,613
Lamb & Mutton		564	70	1,790	7,650

<sup>1</sup> East North Central combined with South Atlantic. Mountain and West North Central combined with West South Central.

<sup>2</sup> Middle Atlantic combined with South Atlantic.

<sup>3</sup> New England combined with Middle Atlantic. East South Central combined with South Atlantic.

<sup>4</sup> Includes all boxed boneless beef, such as ground beef, roasts, steaks, loins, strips, rounds, trimmings, etc. Variety meats (edible offal), such as tongues, livers, hearts, kidneys, and other organs removed from slaughtered beef, are included as miscellaneous freezer stocks.

<sup>5</sup> Includes all boxed primal beef cuts, bone-in.

<sup>6</sup> Includes spareribs and backribs.

<sup>7</sup> Includes 42% regular trimmings, 72% special trimmings, boneless picnic meat, jowls, neckbone trimmings, blade, cheek, head, and shank meat, etc. Packaged bacon, sausage, and processed items, such as hot dogs and luncheon meats, are included in miscellaneous cooler or freezer stocks.

<sup>8</sup> Includes ears, tails, feet, neckbones and snouts.

**Stocks in Cold Storage: By Commodity, Region,  
and United States, April 30, 2005**

Commodity	New England	Middle Atlantic	East North Central	West North Central	South Atlantic
	<i>1,000 Pounds</i>	<i>1,000 Pounds</i>	<i>1,000 Pounds</i>	<i>1,000 Pounds</i>	<i>1,000 Pounds</i>
Total Fresh Apples	5,908	179,466	82,464	2	72,356
Nuts					
Shelled		3	32	27	350,136
Peanuts		3	32	27	350,136
Pecans <sup>1</sup>	70	102			9,306
In-Shell					
Pecans <sup>1</sup>					10,774
Dairy Products					
Natural Cheese					
American, Total	22,667	52,399	219,153	126,753	3,610
Other Natural Cheese	280	9,556	120,048	53,500	106
Frozen Poultry					
Chicken					
Broilers, Fryers					
Roasters (Whole)		1,773	396	837	4,443
Hens, Mature Chickens	11	168	161	128	403
Other	673	16,132	18,062	33,245	233,243
Total Chicken	684	18,073	18,619	34,210	238,089
Turkeys					
Whole Turkeys	1,024	7,647	1,175	52,966	53,993
Other Turkey	296	6,886	15,369	53,604	73,993
Total Turkey	1,320	14,533	16,544	106,570	127,986
Ducks		51	124	1	16
Total Poultry	2,004	32,657	35,287	140,781	366,091
Frozen Fruit					
Apples	21	21,893	57,272	134	384
Blueberries	5,782	4,087	18,167	523	1,123
Cherries, Tart (RTP)	23	3,310	35,580	33	693
Cherries, Sweet		222	3,617	257	13
Peaches	71	2,217	5,346	2,448	273
Raspberries, Red	35	1,238	885	177	116
Strawberries, Total	77	7,619	8,700	2,109	2,872
Other Frozen Fruit	2,072	7,194	140,065	3,106	2,372

See footnote(s) at end of table.

--continued

**Stocks in Cold Storage: By Commodity, Region,  
and United States, April 30, 2005 (continued)**

Commodity	East South Central	West South Central	Mountain	Pacific	US Total
	<i>1,000 Pounds</i>	<i>1,000 Pounds</i>	<i>1,000 Pounds</i>	<i>1,000 Pounds</i>	<i>1,000 Pounds</i>
Total Fresh Apples		3,360	9,397	1,698,445	2,051,398
Nuts					
Shelled					
Peanuts	26,879	117,052	116	240	494,485
Pecans <sup>1</sup>	1,133	19,873		329	30,813
In-Shell					
Pecans <sup>1</sup>	1,003	93,972			105,749
Dairy Products					
Natural Cheese					
American, Total	275	2,146	36,555	84,941	548,499
Other Natural Cheese	2,415	137	6,540	10,521	203,103
Frozen Poultry					
Chicken					
Broilers, Fryers					
Roasters (Whole)	6,142	13,594	388	1,518	29,091
Hens, Mature Chickens	24	561	13	326	1,795
Other	136,329	190,087	4,084	31,969	663,824
Total Chicken	142,495	204,242	4,485	33,813	694,710
Turkeys					
Whole Turkeys	2,794	82,013	7,904	21,512	231,028
Other Turkey	1,182	30,232	16,960	20,877	219,399
Total Turkey	3,976	112,245	24,864	42,389	450,427
Ducks	4	39	19	18	272
Total Poultry	146,475	316,526	29,368	76,220	1,145,409
Frozen Fruit					
Apples	5	1,080	49	10,621	91,459
Blueberries	75	577	48	11,047	41,429
Cherries, Tart (RTP)		109	3,728	3,912	47,388
Cherries, Sweet	1	75	365	2,579	7,129
Peaches	17	1,101	21	22,831	34,325
Raspberries, Red	44	461	20	22,993	25,969
Strawberries, Total	638	27,790	124	142,686	192,615
Other Frozen Fruit	108	13,232	2,058	70,363	240,570

See footnote(s) at end of table.

--continued

**Stocks in Cold Storage: By Commodity, Region,  
and United States, April 30, 2005**

Commodity	New England	Middle Atlantic	East North Central	West North Central	South Atlantic
	<i>1,000 Pounds</i>	<i>1,000 Pounds</i>	<i>1,000 Pounds</i>	<i>1,000 Pounds</i>	<i>1,000 Pounds</i>
Frozen Juice					
Orange Juice Conc. <sup>2</sup>	43		1,125	284	1,592,247
Other Juice Concentrate	15,498	24,354	29,037	2,650	124,987
Frozen Vegetables <sup>3</sup>					
Asparagus		585	3,500	60	100
Limas, Fordhook		1,637	711		300
Limas, Baby		6,253	1,605	1	6,581
Green Beans, Reg. Cut		14,215	21,265	1,102	10,168
Green Beans, Fr. Style		1,670	3,601	312	746
Broccoli, Spears		8,854	5,729		3,948
Broccoli, Chopped & Cut		9,914	5,112	2,041	6,299
Brussels Sprouts		2,260	1,034	1	2,021
Carrots, Diced		7,370	20,148	222	4,831
Carrots, Other		12,738	15,857	748	4,444
Cauliflower		3,604	2,129	117	881
Corn, Cut		27,301	39,949	14,793	14,092
Corn, Cob		8,939	13,708	7,481	6,285
Mixed Vegetables		4,403	6,543	55	2,359
Okra		922	364		2,155
Onion Rings		268	3,182	584	1,259
Onions, Other		6,688	4,055	439	1,999
Blackeye Peas		290	56		768
Green Peas		18,871	17,348	4,816	4,295
Peas & Carrots Mixed		919	683	1	327
Spinach		7,246	2,678	81	3,364
Squash, Summer/Zucchini		4,047	13,093		2,946
Southern Greens		1,515	172	1	2,414
Other Vegetables		31,894	37,684	7,394	16,186
Potatoes					
French Fries	33,298	19,855	59,163	111,598	29,975
Other Frozen	4,484	13,227	32,388	8,175	2,951
Meat					
Frozen Beef					
Boneless <sup>4</sup>	1,082	36,818	26,756	77,624	31,342
Beef Cuts <sup>5</sup>	237	2,267	4,970	6,176	5,929
Frozen Pork					
Ribs <sup>6</sup>	377	1,074	27,575	41,275	14,076
Trimblings <sup>7</sup>	31	76	8,734	32,048	4,205
Other <sup>8</sup>	6,556	567	9,240	52,373	13,835
Other					
Veal		709	337	77	32
Lamb & Mutton		4,901	1,064	37	157

See footnote(s) at end of table.

--continued

**Stocks in Cold Storage: By Commodity, Region,  
and United States, April 30, 2005 (continued)**

Commodity	East South Central	West South Central	Mountain	Pacific	US Total
	<i>1,000 Pounds</i>	<i>1,000 Pounds</i>	<i>1,000 Pounds</i>	<i>1,000 Pounds</i>	<i>1,000 Pounds</i>
Frozen Juice					
Orange Juice Concentrate	32	8,101	1,490	59,336	1,662,658
Other Juice Concentrate	79	20,304	1,529	96,442	314,880
Frozen Vegetables <sup>3</sup>					
Asparagus		323	27	2,336	6,931
Limas, Fordhook		83		1,917	4,648
Limas, Baby		1,625	1,719	16,425	34,209
Green Beans, Reg. Cut		1,118	390	52,320	100,578
Green Beans, Fr. Style		149	30	7,577	14,085
Broccoli, Spears		16,425	159	14,822	49,937
Broccoli, Chopped & Cut		21,763	504	20,504	66,137
Brussels Sprouts		1,939	1	11,669	18,925
Carrots, Diced		1,641	122	52,268	86,602
Carrots, Other		14,106	186	59,307	107,386
Cauliflower		5,728	202	11,969	24,630
Corn, Cut		1,431	1,223	214,640	313,429
Corn, Cob		1,899	23	93,078	131,413
Mixed Vegetables		12,580	11	24,765	50,716
Okra		7,381		760	11,582
Onion Rings		315	283	417	6,308
Onions, Other		1,150	5,469	24,507	44,307
Blackeye Peas		914		392	2,420
Green Peas		2,262	11,804	77,703	137,099
Peas & Carrots Mixed		940	12	2,071	4,953
Spinach		8,948	68	28,274	50,659
Squash, Summer/Zucchini		3,917	638	15,553	40,194
Southern Greens		13,542		1,252	18,896
Other Vegetables		28,048	7,337	154,930	283,473
Potatoes					
French Fries	7,513	19,271	189,801	451,718	922,192
Other Frozen	2,032	30,189	43,623	110,352	247,421
Meat					
Frozen Beef					
Boneless <sup>4</sup>	3,820	59,226	7,275	39,874	283,817
Beef Cuts <sup>5</sup>	695	7,665	9,063	5,878	42,880
Frozen Pork					
Ribs <sup>6</sup>	2,792	2,706	131	3,010	93,016
Trimblings <sup>7</sup>	335	4,705	14	615	50,763
Other <sup>8</sup>	2,651	2,411	268	1,353	89,254
Other					
Veal	5	207		1,369	2,736
Lamb & Mutton		619	96	2,148	9,022

<sup>1</sup> East North Central combined with South Atlantic. Mountain and West North Central Combined with West South Central.

<sup>2</sup> Middle Atlantic combined with South Atlantic.

<sup>3</sup> New England combined with Middle Atlantic. East South Central combined with South Atlantic.

<sup>4</sup> Includes all boxed boneless beef, such as ground beef, roasts, steaks, loins, strips, rounds, trimmings, etc. Variety meats (edible offal), such as tongues, livers, hearts, kidneys, and other organs removed from slaughtered beef, are included as miscellaneous freezer stocks.

<sup>5</sup> Includes all boxed primal beef cuts, bone-in.

<sup>6</sup> Includes spareribs and backribs.

<sup>7</sup> Includes 42% regular trimmings, 72% special trimmings, boneless picnic meat, jowls, neckbone trimmings, blade, cheek, head, and shank meat, etc. Packaged bacon, sausage, and processed items, such as hot dogs and luncheon meats, are included in miscellaneous cooler or freezer stocks.

<sup>8</sup> Includes ears, tails, feet, neckbones and snouts.

**Public General Warehouses: Cold Storage Space Occupied  
by Region and United States, April 2005**

Region	Cooler				Freezer			
	Usable Space	Usable Space Occupied			Usable Space	Usable Space Occupied		
	Apr 30 2005	Apr 30 2004	Mar 31 2005	Apr 30 2005	Apr 30 2005	Apr 30 2004	Mar 31 2005	Apr 30 2005
	<i>1,000 Cu Ft</i>	<i>Percent</i>	<i>Percent</i>	<i>Percent</i>	<i>1,000 Cu Ft</i>	<i>Percent</i>	<i>Percent</i>	<i>Percent</i>
New England	1,791	75	88	86	16,899	70	76	78
Middle Atlantic	48,750	54	59	57	140,637	52	67	68
E. North Central	65,844	50	54	53	260,872	49	53	55
W. North Central	46,640	37	57	57	158,489	55	65	70
South Atlantic	54,098	31	47	52	198,158	52	54	57
E. South Central	9,761	45	68	65	70,958	42	48	55
W. South Central	29,030	30	33	33	139,858	45	45	48
Mountain	12,153	43	52	50	61,444	62	67	70
Pacific	50,850	38	46	45	316,845	59	61	61
US	318,917	41	51	51	1,364,160	53	58	60

## Cold Storage Regions





**Apples in Cold Storage: By State  
and United States, April 2005**

State	All Warehouses		
	Apr 30 2004	Mar 31 2005	Apr 30 2005
	<i>1,000 Pounds</i>	<i>1,000 Pounds</i>	
CA	18,052	18,177	11,973
MI	87,284	137,500	81,771
N ENG	5,444	11,064	5,907
NY	128,184	143,094	104,244
OH	990	1,440	130
OR	11,470	18,919	16,257
PA	84,020	111,720	75,222
VA	56,404	63,812	47,765
WA	1,018,332	2,223,942	1,670,214
WV	19,550	33,005	18,698
Other States	18,131	33,364	19,216
US	1,447,861	2,796,037	2,051,398

**Survey Procedures:** Questionnaires are mailed about the 24th of each month to all operators on the list of approximately 1,400 public and private cold storage warehouses. In addition, apple data are obtained from special surveys and other sources (State Departments of Agriculture, U.S. Apple Association, etc.). All survey data represent stocks as of the end of the month.

Data are collected from warehouses artificially cooled to a temperature of 50 degrees Fahrenheit or lower, and whose food products are normally stored for 30 days or more. All food items in these facilities are reported regardless of the number of days stored at the time of the report. Also included are specialized storage facilities meeting the 30 day requirement, such as fruit houses, dairy manufacturing plants, frozen fruit, fruit juice, and vegetable processors, and poultry and meat packing plants. Excluded are stocks in space maintained by wholesalers, jobbers, distributors, chain stores, locker plants containing individual lockers, meat packer branch houses, and frozen food processors whose entire inventories are turned over more than once a month.

**Estimating Procedures:** Data for reporting firms are added to estimates for non-reporting firms to obtain regional and National totals. Estimates for non-reporting firms are obtained by multiplying the previous month's figure by a percent change from the previous month. The percent change is calculated for each item from totals of the current and previous month summed from firms that reported both months.

**Revision Policy:** Data are revised the following month based on late reports or corrected data. Final figures are published in the annual summary in February of the following year.

**Reliability:** Reports are received from 900 firms each month which represent about 70 percent of the total capacity. Firms that are not on the list or firms who have never reported are not represented in the data. Monthly data can vary due to different firms reporting month to month. Survey data are also subject to non-sampling errors such as omissions and mistakes in reporting and in processing the data. While these errors cannot be measured directly, they are minimized by carefully reviewing all reported data for consistency and reasonableness.

## ACCESS TO REPORTS!!

---

For your convenience, there are several ways to obtain NASS reports, data products, and services:

### INTERNET ACCESS

All NASS reports are available free of charge on the worldwide Internet. For access, connect to the Internet and go to the NASS Home Page at: [www.usda.gov/nass/](http://www.usda.gov/nass/). Select "Today's Reports" or Publications and then Reports Calendar or Publications and then Search, by Title or Subject.

### E-MAIL SUBSCRIPTION

All NASS reports are available by subscription free of charge direct to your e-mail address. Starting with the NASS Home Page at [www.usda.gov/nass/](http://www.usda.gov/nass/), click on **Publications**, then click on the **Subscribe by E-mail** button which takes you to the page describing e-mail delivery of reports. Finally, click on **Go to the Subscription Page** and follow the instructions.

-----

### PRINTED REPORTS OR DATA PRODUCTS

**CALL OUR TOLL-FREE ORDER DESK: 800-999-6779 (U.S. and Canada)**  
**Other areas, please call 703-605-6220      FAX: 703-605-6900**  
**(Visa, MasterCard, check, or money order acceptable for payment.)**

-----

### ASSISTANCE

For **assistance** with general agricultural statistics or further information about NASS or its products or services, contact the **Agricultural Statistics Hotline** at **800-727-9540**, 7:30 a.m. to 4:00 p.m. ET, or e-mail: [nass@nass.usda.gov](mailto:nass@nass.usda.gov).

The U.S. Department of Agriculture (USDA) prohibits discrimination in all its programs and activities on the basis of race, color, national origin, sex, religion, age, disability, political beliefs, sexual orientation, and marital or family status. (Not all prohibited bases apply to all programs.) Persons with disabilities who require alternative means for communication of program information (Braille, large print, audiotape, etc.) should contact USDA's TARGET Center at 202-720-2600 (voice and TDD).

To file a complaint of discrimination, write USDA, Director, Office of Civil Rights, Room 326-W, Whitten Building, 14th and Independence Avenue, SW, Washington, DC 20250-9410 or call 202-720-5964 (voice and TDD). USDA is an equal opportunity provider and employer.