



NASS

FACT FINDERS FOR AGRICULTURE
UNITED STATES DEPARTMENT OF AGRICULTURE

Washington, D.C.

Cold Storage

Released October 21, 2005, by the National Agricultural Statistics Service (NASS), Agricultural Statistics Board, U.S. Department of Agriculture. For information on *Cold Storage* call David Colwell at (202) 720-8784, office hours 7:30 a.m. to 4:00 p.m. ET.

Highlights

Frozen food stocks in refrigerated warehouses on September 30, 2005 were greater than year earlier levels for pork and eggs.

Butter stocks were down 18 percent from last month, and down 8 percent from a year ago.

Total red meat supplies in freezers were up 5 percent from last month and up 1 percent from last year. Frozen pork supplies were up 3 percent from last month and up 3 percent from the previous year. Stocks of pork bellies were down 37 percent from last month, but up 23 percent from last year.

Total frozen poultry supplies on September 30, 2005 were up slightly from the previous month, but down 6 percent from a year ago. Total stocks of chicken were up 4 percent from the previous month, but down 5 percent from last year. Total pounds of turkey in freezers were down 6 percent from last month and down 6 percent from September 30, 2004.

Special Note

Included in this issue are revisions to Frozen Apples for the months of April through December, 2004. Also, revised are Total Frozen Fruit, and Frozen Apples in the East North Central Region for the same time period. This information was first published in the September issue of *Cold Storage*.

This page is intentionally blank.

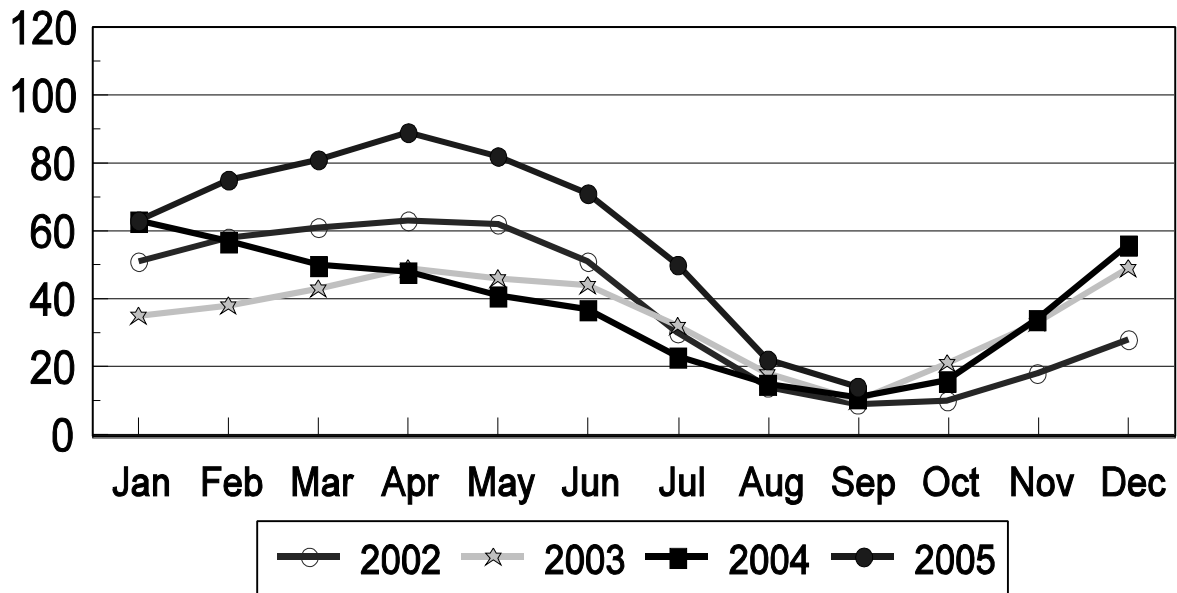
Contents

	Page
Frozen Apples: Revisions for April through December, 2004	1
Stocks in Cold Storage: By Commodity, United States, July 2005	2
Stocks in Cold Storage: By Commodity, Region, and United States, June 31, 2005	6
Stocks in Cold Storage: By Commodity, Region, and United States, July 31, 2005	10
Public General Warehouses: Cold Storage Space Occupied by Region and United States, July 2005	14
Survey and Estimating Procedures, Revision Policy and Reliability	15
Access to Reports	16

Frozen Pork Bellies-United States

Cold Storage Stocks, 2002-2005

Million Pounds



**Stocks in Cold Storage: By Commodity,
United States, 2004-2005**

Year and Month	United States		East North Central Region
	Frozen Apples	Total Frozen Fruit	Frozen Apples
	<i>1,000 Pounds</i>	<i>1,000 Pounds</i>	<i>1,000 Pounds</i>
2004			
January	48,596	895,506	28,024
February	50,778	803,321	28,059
March	55,604	715,709	28,050
*April	76,921	724,805	48,094
*May	73,897	759,481	46,605
*June	66,704	839,835	41,353
*July	58,519	1,070,294	36,449
*August	50,023	1,059,966	32,277
*September	40,485	1,036,710	25,688
*October	50,749	1,210,340	31,432
*November	59,468	1,181,257	37,944
*December	65,909	1,093,884	42,481
2005			
January	73,385	989,394	45,183
February	89,864	879,606	55,430
March	89,064	753,493	54,748
April	93,849	711,997	57,272
May	89,909	687,592	54,494
June	85,145	769,159	50,570
July	76,457	1,055,978	44,270
August	62,272	1,067,640	36,781
September			
October			
November			
December			

* Revised, based on updated plant information.

**Stocks in Cold Storage: By Commodity,
United States, September 2005**

Commodity	Stocks in All Warehouses			Percent of		Public Warehouse Stocks
	Sep 30, 2004	Aug 31, 2005	Sep 30, 2005	Sep 2004	Aug 2005	Sep 30, 2005
	<i>1,000 Pounds</i>	<i>1,000 Pounds</i>	<i>1,000 Pounds</i>	<i>Percent</i>	<i>Percent</i>	<i>1,000 Lbs</i>
Fresh Fruit						
Apples						
Regular Storage	1,052,119	24,990	953,304	91	3,815	
Controlled Atmosphere	1,953,788	91,812	1,899,647	97	2,069	
Total	3,005,907	116,802	2,852,951	95	2,443	8,510
Pears						
Bartlett	103,666	72,173	109,054	105	151	
Other Varieties	394,052	1,408	330,578	84	23,479	
Total	497,718	73,581	439,632	88	597	604
Nuts						
Shelled						
Peanuts	225,378	272,469	205,027	91	75	
Pecans	25,272	31,241	23,046	91	74	
Other Shelled	88,311	84,355	88,673	100	105	
Total	338,961	388,065	316,746	93	82	127,651
In-Shell						
Peanuts	11,945	19,939	14,817	124	74	
Pecans	38,359	24,026	13,881	36	58	
Other In-Shell	9,592	7,656	7,729	81	101	
Total	59,896	51,621	36,427	61	71	13,448
Dairy Products						
Butter, Total	133,008	149,623	122,988	92	82	103,797
(Government Owned)	50	55	44	88	80	
Natural Cheese						
American, Total	553,884	572,829	541,511	98	95	
(Government Owned)	6,454	943	844	13	90	
Swiss	26,992	21,852	21,358	79	98	
Other Natural Cheese	209,841	209,458	203,069	97	97	
Total	790,717	804,139	765,938	97	95	422,568
Eggs, Frozen						
Whites	3,026	2,788	3,096	102	111	
Yolks	1,501	1,207	1,214	81	101	
Whole & Mixed	10,569	12,447	11,360	107	91	
Unclassified	3,624	3,478	3,514	97	101	
Total	18,720	19,920	19,184	102	96	18,826
Frozen Poultry						
Chicken						
Broilers, Fryers						
Roasters (Whole)	24,132	20,533	21,713	90	106	
Hens, Mature Chickens	3,799	1,665	1,797	47	108	
Breasts & Breast Meat	119,834	134,933	135,863	113	101	
Drumsticks	15,710	10,750	11,660	74	108	
Leg Quarters	111,986	89,182	112,589	101	126	
Legs	7,725	9,522	12,239	158	129	
Thigh & Thigh Quarters	13,048	8,177	8,420	65	103	
Thigh Meat	14,716	11,300	9,361	64	83	
Wings	34,580	42,078	42,819	124	102	
Paws and Feet	15,150	8,209	8,444	56	103	
Other	417,194	369,370	372,216	89	101	
Total Chicken	777,874	705,719	737,121	95	104	

See footnote(s) at end of table.

--continued

**Stocks in Cold Storage: By Commodity,
United States, September 2005**

Commodity	Stocks in All Warehouses			Percent of		Public Warehouse Stocks
	Sep 31, 2004	Aug 31, 2005	Sep 30, 2005	Sep 2004	Aug 2005	Sep 30, 2005
	<i>1,000 Pounds</i>	<i>1,000 Pounds</i>	<i>1,000 Pounds</i>	<i>Percent</i>	<i>Percent</i>	<i>1,000 Lbs</i>
Turkeys						
Toms (Whole Carcasses)	185,035	167,938	171,907	93	102	
Hens (Whole Carcasses)	105,277	128,574	107,545	102	84	
Whole Turkeys	290,312	296,512	279,452	96	94	
Other Turkey	237,076	230,090	214,435	90	93	
Total Turkey	527,388	526,602	493,887	94	94	381,433
Ducks	918	622	2,452	267	394	
Total Poultry	1,306,180	1,232,943	1,233,460	94	100	1,075,898
Frozen Fruit						
Apples	40,485	62,272	49,752	123	80	
Apricots	9,194	6,841	6,497	71	95	
Blackberries, Total	39,576	33,369	32,395	82	97	
IQF	25,635	21,976	21,226	83	97	
Pails and Tubs	4,614	5,452	5,367	116	98	
Barrels, 400 lbs net	9,010	5,635	5,503	61	98	
Concentrate	317	306	299	94	98	
Blueberries	110,057	108,072	104,721	95	97	
Boysenberries	2,245	2,583	2,430	108	94	
Cherries, Tart (RTP)	99,862	149,694	139,791	140	93	
Cherries, Tart (Juice)	2,696	4,364	2,816	104	65	
Cherries, Sweet	9,816	13,972	12,786	130	92	
Grapes	6,915	2,133	3,538	51	166	
Peaches	87,117	45,222	74,368	85	164	
Raspberries, Black	1,259	2,354	2,003	159	85	
Raspberries, Red, Total	60,699	86,328	80,269	132	93	
IQF	25,741	25,926	24,052	93	93	
Pails and Tubs	13,651	16,149	15,042	110	93	
Barrels, 400 lbs net	20,570	42,239	39,206	191	93	
Concentrate	737	2,014	1,969	267	98	
Strawberries, Total	416,254	384,862	324,613	78	84	
IQF and Poly	217,831	178,778	155,444	71	87	
Pails and Tubs	119,338	120,032	103,300	87	86	
Barrels and Drums	59,108	70,299	52,669	89	75	
Juice Stock	19,977	15,753	13,200	66	84	
Other Frozen Fruit	150,535	165,574	165,058	110	100	
Total	1,036,710	1,067,640	1,001,037	97	94	828,276
Frozen Juice						
Orange Juice Conc. ¹	1,644,222	1,397,333	1,243,452	76	89	
(Gallon Equivalent)	166,150	141,202	125,652			
Other Juice Concentrate	275,963	249,846	245,289	89	98	
Total	1,920,185	1,647,179	1,488,741	78	90	208,147

See footnote(s) at end of table.

--continued

**Stocks in Cold Storage: By Commodity,
United States, September 2005**

Commodity	Stocks in All Warehouses			Percent of		Public Warehouse Stocks
	Sep 31, 2004	Aug 31, 2005	Sep 30, 2005	Sep 2004	Aug 2005	Sep 30, 2005
	<i>1,000 Pounds</i>	<i>1,000 Pounds</i>	<i>1,000 Pounds</i>	<i>Percent</i>	<i>Percent</i>	<i>1,000 Lbs</i>
Frozen Vegetables						
Asparagus	12,007	13,501	11,641	97	86	
Limas, Fordhook	12,293	7,575	10,459	85	138	
Limas, Baby	53,479	27,593	41,522	78	150	
Green Beans, Reg. Cut	248,212	203,449	264,265	106	130	
Green Beans, Fr. Style	35,662	26,560	31,510	88	119	
Broccoli, Spears	44,367	46,279	53,676	121	116	
Broccoli, Chopped & Cut	55,808	59,579	59,738	107	100	
Brussels Sprouts	7,219	10,819	9,735	135	90	
Carrots, Diced	44,421	50,575	47,712	107	94	
Carrots, Other	76,685	82,673	87,612	114	106	
Cauliflower	14,365	18,824	23,782	166	126	
Corn, Cut	595,374	368,026	536,396	90	146	
Corn, Cob	295,913	155,597	272,203	92	175	
Mixed Vegetables	52,368	52,889	56,553	108	107	
Okra	45,452	36,894	41,318	91	112	
Onion Rings	6,739	4,422	4,590	68	104	
Onions, Other	29,087	40,412	39,775	137	98	
Blackeye Peas	3,095	2,712	3,249	105	120	
Green Peas	326,667	334,021	301,105	92	90	
Peas & Carrots Mixed	5,753	6,003	5,586	97	93	
Spinach	56,783	63,870	56,120	99	88	
Squash, Summer/Zucchini	45,306	41,600	51,391	113	124	
Southern Greens	14,739	15,315	14,255	97	93	
Other Vegetables	357,852	331,866	365,875	102	110	
Total	2,439,646	2,001,054	2,390,068	98	119	1,851,408
Potatoes						
French Fries	915,922	893,612	930,609	102	104	
Other Frozen	262,726	227,720	248,850	95	109	
Total	1,178,648	1,121,332	1,179,459	100	105	892,249

See footnote(s) at end of table.

--continued

**Stocks in Cold Storage: By Commodity,
United States, September 2005**

Commodity	Stocks in All Warehouses			Percent of		Public Warehouse Stocks
	Sep 31, 2004	Aug 31, 2005	Sep 30, 2005	Sep 2004	Aug 2005	Sep 30, 2005
	<i>1,000 Pounds</i>	<i>1,000 Pounds</i>	<i>1,000 Pounds</i>	<i>Percent</i>	<i>Percent</i>	<i>1,000 Lbs</i>
Meat						
Frozen Beef						
Boneless ²	408,973	367,027	396,824	97	108	
Beef Cuts ³	48,271	43,565	46,917	97	108	
Total	457,244	410,592	443,741	97	108	441,851
(Government Owned)	3,334	2,470	2,156	65	87	
Frozen Pork						
Picnics, Bone-in	15,177	8,164	9,364	62	115	
Hams, Total	108,495	107,865	102,875	95	95	98,802
Bone-in	65,534	64,647	61,835	94	96	61,181
Boneless ⁴	42,961	43,218	41,040	96	95	37,621
Bellies	11,344	22,098	13,990	123	63	
Loins, Total	30,488	27,001	30,001	98	111	27,897
Bone-in	16,158	14,788	19,054	118	129	
Boneless ⁵	14,330	12,213	10,947	76	90	
Ribs ⁶	46,804	48,096	55,552	119	116	
Butts	5,805	5,931	7,347	127	124	
Trimming ⁷	23,533	32,716	32,955	140	101	
Other ⁸	74,119	74,698	84,248	114	113	
Variety Meats ⁹	49,309	32,543	32,470	66	100	
Unclassified ¹⁰	48,749	55,302	58,209	119	105	
Total	413,823	414,414	427,011	103	103	376,898
(Government Owned)	1,028	232	345	34	149	
Other						
Veal	4,106	3,561	3,738	91	105	
Lamb & Mutton	4,179	11,790	10,888	261	92	
Total	8,285	15,351	14,626	177	95	14,592
Canned						
Canned Hams	5,092	4,224	4,058	80	96	
Other Canned Meat	1,660	4,259	3,803	229	89	
Total	6,752	8,483	7,861	116	93	7,832
Total	886,104	848,840	893,239	101	105	841,173
Miscellaneous						
Cooler	815,871	570,711	790,719	97	139	345,270
Freezer	2,111,258	2,187,144	2,251,143	107	103	2,192,441
Total	2,927,129	2,757,855	3,041,862	104	110	2,537,711
Commodities						
Stored in Coolers	5,531,451	2,025,390	5,221,283	94	258	1,096,535
Stored in Freezers	10,988,491	10,255,204	10,560,449	96	103	8,004,383
Total	16,519,942	12,280,594	15,781,732	96	129	9,100,918

¹ Adjusted to 42.0 degrees Brix equivalent (9.896 pounds per gallon).

² Includes all boxed boneless beef, such as ground beef, roasts, steaks, loins, strips, rounds, trimmings, etc. Variety meats (edible offal), such as tongues, livers, hearts, kidneys, and other organs removed from slaughtered beef, are included as miscellaneous freezer stocks.

³ Includes all boxed primal beef cuts, bone-in.

⁴ Includes full ham, bone removed and individual muscles separated.

⁵ Includes pork tenderloins.

⁶ Includes spareribs and backribs.

⁷ Includes 42% regular trimmings, 72% special trimmings, boneless picnic meat, jowls, neckbone trimmings, blade, cheek, head, and shank meat, etc. Packaged bacon, sausage, and processed items, such as hot dogs and luncheon meats, are included in miscellaneous cooler or freezer stocks.

⁸ Includes ears, tails, feet, neckbones and snouts.

⁹ Includes tongues, kidneys, livers, stomachs, hearts, chitterlings, salivary glands, and other organs removed from slaughtered hogs.

¹⁰ Includes product unable to be classified elsewhere in this report.

**Stocks in Cold Storage: By Commodity, Region,
and United States, August 31, 2005, Revised**

Commodity	New England	Middle Atlantic	East North Central	West North Central	South Atlantic
	<i>1,000 Pounds</i>	<i>1,000 Pounds</i>	<i>1,000 Pounds</i>	<i>1,000 Pounds</i>	<i>1,000 Pounds</i>
Total Fresh Apples		19,698	10	14	18
Nuts					
Shelled					
Peanuts			20	15	167,755
Pecans ¹	66	192			6,372
In-Shell					
Pecans ¹					2,649
Dairy Products					
Natural Cheese					
American, Total	27,259	56,720	230,684	122,054	7,206
Other Natural Cheese	41	13,073	122,408	55,196	136
Frozen Poultry					
Chicken					
Broilers, Fryers					
Roasters (Whole)		1,983	314	727	5,186
Hens, Mature Chickens	8	102	75	32	448
Other	709	14,460	16,492	35,686	251,681
Total Chicken	717	16,545	16,881	36,445	257,315
Turkeys					
Whole Turkeys	6,191	25,550	12,702	41,085	51,027
Other Turkey	843	7,503	17,705	59,845	72,778
Total Turkey	7,034	33,053	30,407	100,930	123,805
Ducks		76	371	1	50
Total Poultry	7,751	49,674	47,659	137,376	381,170
Frozen Fruit					
Apples	28	16,175	36,781	116	198
Blueberries	10,947	12,128	44,906	1,118	6,225
Cherries, Tart (RTP)	1	6,777	118,997	159	1,007
Cherries, Sweet		209	9,053	265	1
Peaches	44	1,625	8,082	2,526	495
Raspberries, Red	25	1,835	1,329	658	218
Strawberries, Total	8	5,737	7,160	1,763	2,682
Other Frozen Fruit	46	5,843	78,841	4,040	892

See footnote(s) at end of table.

--continued

**Stocks in Cold Storage: By Commodity, Region,
and United States, August 31, 2005, Revised, (continued)**

Commodity	East South Central	West South Central	Mountain	Pacific	US Total
	<i>1,000 Pounds</i>	<i>1,000 Pounds</i>	<i>1,000 Pounds</i>	<i>1,000 Pounds</i>	<i>1,000 Pounds</i>
Total Fresh Apples		204	51	96,807	116,802
Nuts					
Shelled					
Peanuts	21,113	83,354	80	132	272,469
Pecans ¹	663	23,613		335	31,241
In-Shell					
Pecans ¹	702	20,675			24,026
Dairy Products					
Natural Cheese					
American, Total	124	6,412	36,665	85,705	572,829
Other Natural Cheese	2,556	46	2,866	13,136	209,458
Frozen Poultry					
Chicken					
Broilers, Fryers					
Roasters (Whole)	4,530	5,603	452	1,738	20,533
Hens, Mature Chickens	65	815	11	109	1,665
Other	137,956	190,048	2,774	33,715	683,521
Total Chicken	142,551	196,466	3,237	35,562	705,719
Turkeys					
Whole Turkeys	8,343	94,771	27,724	29,119	296,512
Other Turkey	2,735	29,602	10,998	28,081	230,090
Total Turkey	11,078	124,373	38,722	57,200	526,602
Ducks	10	46	30	38	622
Total Poultry	153,639	320,885	41,989	92,800	1,232,943
Frozen Fruit					
Apples	3	971	64	7,936	62,272
Blueberries	172	495	66	32,015	108,072
Cherries, Tart (RTP)		155	18,500	4,098	149,694
Cherries, Sweet	1	130	48	4,265	13,972
Peaches	29	265	43	32,113	45,222
Raspberries, Red	127	506	59	81,571	86,328
Strawberries, Total	1,092	29,109	108	337,203	384,862
Other Frozen Fruit	84	10,131	2,773	62,924	165,574

See footnote(s) at end of table.

--continued

**Stocks in Cold Storage: By Commodity, Region,
and United States, August 31, 2005, Revised**

Commodity	New England	Middle Atlantic	East North Central	West North Central	South Atlantic
	<i>1,000 Pounds</i>	<i>1,000 Pounds</i>	<i>1,000 Pounds</i>	<i>1,000 Pounds</i>	<i>1,000 Pounds</i>
Frozen Juice					
Orange Juice Conc. ²	16		740	367	1,339,906
Other Juice Concentrate	2,471	20,047	29,145	1,571	95,390
Frozen Vegetables ³					
Asparagus		700	7,410	53	139
Limas, Fordhook		1,757	927		505
Limas, Baby		3,882	748	211	4,089
Green Beans, Reg. Cut		19,518	52,014	1,341	18,608
Green Beans, Fr. Style		4,351	4,843	228	1,212
Broccoli, Spears		6,183	5,617	1	3,784
Broccoli, Chopped & Cut		7,337	5,573	2,215	2,899
Brussels Sprouts		1,467	831		382
Carrots, Diced		3,363	11,272	119	2,871
Carrots, Other		8,801	10,333	695	3,218
Cauliflower		2,269	1,525	232	627
Corn, Cut		31,578	62,127	25,203	15,527
Corn, Cob		9,336	25,240	19,065	7,571
Mixed Vegetables		4,842	7,022	20	1,758
Okra		1,908	551	3,820	3,740
Onion Rings		199	2,597	708	89
Onions, Other		3,639	4,541	314	1,725
Blackeye Peas		301	34		1,085
Green Peas		50,994	42,718	23,688	14,737
Peas & Carrots Mixed		809	811		159
Spinach		11,266	4,702	41	3,283
Squash, Summer/Zucchini		3,185	12,280		1,695
Southern Greens		1,544	217	1	2,204
Other Vegetables		36,421	45,959	5,169	19,643
Potatoes					
French Fries	35,781	21,740	52,795	102,511	21,769
Other Frozen	4,829	10,369	30,394	9,024	2,235
Meat					
Frozen Beef					
Boneless ⁴	1,007	54,494	34,186	112,452	30,713
Beef Cuts ⁵	240	1,419	6,831	10,082	5,463
Frozen Pork					
Ribs ⁶	207	491	9,047	21,370	9,471
Trimblings ⁷	32	18	6,645	19,100	2,220
Other ⁸	7,710	373	11,266	35,755	12,975
Other					
Veal		1,011	753	68	24
Lamb & Mutton		5,600	1,393	73	1,648

See footnote(s) at end of table.

--continued

**Stocks in Cold Storage: By Commodity, Region,
and United States, August 31, 2005, Revised, (continued)**

Commodity	East South Central	West South Central	Mountain	Pacific	US Total
	<i>1,000 Pounds</i>	<i>1,000 Pounds</i>	<i>1,000 Pounds</i>	<i>1,000 Pounds</i>	<i>1,000 Pounds</i>
Frozen Juice					
Orange Juice Concentrate	54	5,931	1,191	49,128	1,397,333
Other Juice Concentrate	64	17,559	1,692	81,907	249,846
Frozen Vegetables ³					
Asparagus		336	6	4,857	13,501
Limas, Fordhook		105		4,281	7,575
Limas, Baby		1,287	892	16,484	27,593
Green Beans, Reg. Cut		1,248	159	110,561	203,449
Green Beans, Fr. Style		200	26	15,700	26,560
Broccoli, Spears		14,049	3	16,642	46,279
Broccoli, Chopped & Cut		14,553	412	26,590	59,579
Brussels Sprouts		831	2	7,306	10,819
Carrots, Diced		1,245	50	31,655	50,575
Carrots, Other		14,257	105	45,264	82,673
Cauliflower		3,748	135	10,288	18,824
Corn, Cut		1,835	4,444	227,312	368,026
Corn, Cob		1,871	5,290	87,224	155,597
Mixed Vegetables		9,913	1,755	27,579	52,889
Okra		26,191		684	36,894
Onion Rings		408	211	210	4,422
Onions, Other		1,945	12,981	15,267	40,412
Blackeye Peas		934		358	2,712
Green Peas		2,392	8,603	190,889	334,021
Peas & Carrots Mixed		1,202	55	2,967	6,003
Spinach		7,683	91	36,804	63,870
Squash, Summer/Zucchini		5,515	433	18,492	41,600
Southern Greens		9,468		1,881	15,315
Other Vegetables		33,452	5,858	185,364	331,866
Potatoes					
French Fries	6,035	14,271	183,648	455,062	893,612
Other Frozen	1,932	20,674	47,058	101,205	227,720
Meat					
Frozen Beef					
Boneless ⁴	4,973	69,829	8,546	50,827	367,027
Beef Cuts ⁵	1,350	5,883	8,691	3,606	43,565
Frozen Pork					
Ribs ⁶	2,704	2,875	97	1,834	48,096
Trimming ⁷	790	2,598	31	1,282	32,716
Other ⁸	2,901	1,576	237	1,905	74,698
Other					
Veal		238		1,467	3,561
Lamb & Mutton		462	51	2,563	11,790

¹ East North Central combined with South Atlantic. Mountain and West North Central combined with West South Central.

² Middle Atlantic combined with South Atlantic.

³ New England combined with Middle Atlantic. East South Central combined with South Atlantic.

⁴ Includes all boxed boneless beef, such as ground beef, roasts, steaks, loins, strips, rounds, trimmings, etc. Variety meats (edible offal), such as tongues, livers, hearts, kidneys, and other organs removed from slaughtered beef, are included as miscellaneous freezer stocks.

⁵ Includes all boxed primal beef cuts, bone-in.

⁶ Includes spareribs and backribs.

⁷ Includes 42% regular trimmings, 72% special trimmings, boneless picnic meat, jowls, neckbone trimmings, blade, cheek, head, and shank meat, etc. Packaged bacon, sausage, and processed items, such as hot dogs and luncheon meats, are included in miscellaneous cooler or freezer stocks.

⁸ Includes ears, tails, feet, neckbones and snouts.

**Stocks in Cold Storage: By Commodity, Region,
and United States, September 30, 2005**

Commodity	New England	Middle Atlantic	East North Central	West North Central	South Atlantic
	<i>1,000 Pounds</i>	<i>1,000 Pounds</i>	<i>1,000 Pounds</i>	<i>1,000 Pounds</i>	<i>1,000 Pounds</i>
Total Fresh Apples		160,525	2,509	16	38
Nuts					
Shelled					
Peanuts		15	13	11	124,586
Pecans ¹	65	134			4,786
In-Shell					
Pecans ¹					982
Dairy Products					
Natural Cheese					
American, Total	26,149	54,554	219,430	112,235	7,733
Other Natural Cheese	38	11,840	117,376	55,344	120
Frozen Poultry					
Chicken					
Broilers, Fryers					
Roasters (Whole)		2,059	285	801	4,848
Hens, Mature Chickens	11	231	115	69	556
Other	716	15,797	15,314	38,147	265,921
Total Chicken	727	18,087	15,714	39,017	271,325
Turkeys					
Whole Turkeys	6,853	26,627	13,558	38,955	55,298
Other Turkey	723	7,274	16,689	54,716	69,014
Total Turkey	7,576	33,901	30,247	93,671	124,312
Ducks		74	2,179	1	52
Total Poultry	8,303	52,062	48,140	132,689	395,689
Frozen Fruit					
Apples	229	11,957	29,974	89	250
Blueberries	10,281	11,315	44,535	1,198	4,795
Cherries, Tart (RTP)	68	6,547	111,383	147	936
Cherries, Sweet		174	8,291	196	1
Peaches	103	2,583	14,425	3,840	686
Raspberries, Red	115	1,546	1,458	655	203
Strawberries, Total	69	5,340	7,578	1,596	2,380
Other Frozen Fruit	248	5,518	76,322	4,009	872

See footnote(s) at end of table.

--continued

**Stocks in Cold Storage: By Commodity, Region,
and United States, September 30, 2005 (continued)**

Commodity	East South Central	West South Central	Mountain	Pacific	US Total
	<i>1,000 Pounds</i>	<i>1,000 Pounds</i>	<i>1,000 Pounds</i>	<i>1,000 Pounds</i>	<i>1,000 Pounds</i>
Total Fresh Apples		205	51	2,689,607	2,852,951
Nuts					
Shelled					
Peanuts	14,820	65,408	75	99	205,027
Pecans ¹	476	17,409		176	23,046
In-Shell					
Pecans ¹	408	12,491			13,881
Dairy Products					
Natural Cheese					
American, Total	334	5,444	33,864	81,768	541,511
Other Natural Cheese	2,512	391	2,789	12,659	203,069
Frozen Poultry					
Chicken					
Broilers, Fryers					
Roasters (Whole)	5,506	5,759	466	1,989	21,713
Hens, Mature Chickens	66	514	11	224	1,797
Other	141,222	200,767	2,290	33,437	713,611
Total Chicken	146,794	207,040	2,767	35,650	737,121
Turkeys					
Whole Turkeys	5,433	64,434	30,188	38,106	279,452
Other Turkey	3,665	22,273	10,114	29,967	214,435
Total Turkey	9,098	86,707	40,302	68,073	493,887
Ducks	14	7	27	98	2,452
Total Poultry	155,906	293,754	43,096	103,821	1,233,460
Frozen Fruit					
Apples	2	861	61	6,329	49,752
Blueberries	167	587	84	31,759	104,721
Cherries, Tart (RTP)		135	16,754	3,821	139,791
Cherries, Sweet	1	131	25	3,967	12,786
Peaches	48	520	87	52,076	74,368
Raspberries, Red	117	502	55	75,618	80,269
Strawberries, Total	989	25,548	137	280,976	324,613
Other Frozen Fruit	96	10,409	3,094	64,490	165,058

See footnote(s) at end of table.

--continued

**Stocks in Cold Storage: By Commodity, Region,
and United States, September 30, 2005**

Commodity	New England	Middle Atlantic	East North Central	West North Central	South Atlantic
	<i>1,000 Pounds</i>	<i>1,000 Pounds</i>	<i>1,000 Pounds</i>	<i>1,000 Pounds</i>	<i>1,000 Pounds</i>
Frozen Juice					
Orange Juice Conc. ²	14		639	331	1,193,047
Other Juice Concentrate	4,508	25,623	33,079	1,490	84,835
Frozen Vegetables ³					
Asparagus		579	5,941	27	99
Limas, Fordhook		2,742	1,572		721
Limas, Baby		6,260	2,339	245	6,709
Green Beans, Reg. Cut		43,129	65,757	2,382	24,208
Green Beans, Fr. Style		7,210	7,149	172	1,361
Broccoli, Spears		5,509	4,930	1	3,689
Broccoli, Chopped & Cut		6,382	8,178	1,994	3,293
Brussels Sprouts		1,398	1,051		342
Carrots, Diced		2,822	10,327	192	2,728
Carrots, Other		8,377	10,934	690	3,929
Cauliflower		3,537	2,185	233	849
Corn, Cut		59,271	78,452	45,102	22,640
Corn, Cob		17,930	40,698	31,368	13,555
Mixed Vegetables		4,999	8,915	9	1,943
Okra		1,996	705	5,350	4,254
Onion Rings		179	2,957	446	108
Onions, Other		3,316	3,920	279	1,919
Blackeye Peas		322	15		1,658
Green Peas		46,723	34,017	22,644	14,270
Peas & Carrots Mixed		918	850		150
Spinach		10,191	5,217	57	2,916
Squash, Summer/Zucchini		2,550	21,054		1,861
Southern Greens		1,427	699	1	2,274
Other Vegetables		42,171	55,024	8,457	21,232
Potatoes					
French Fries	31,904	21,289	58,704	106,904	21,267
Other Frozen	4,477	9,387	34,079	8,376	2,298
Meat					
Frozen Beef					
Boneless ⁴	1,335	57,501	37,234	126,866	24,649
Beef Cuts ⁵	237	1,410	7,025	11,780	5,487
Frozen Pork					
Ribs ⁶	204	543	10,365	25,277	11,473
Trimmings ⁷	23	20	8,351	18,203	2,403
Other ⁸	7,869	445	12,523	42,445	13,953
Other					
Veal		964	917	68	65
Lamb & Mutton		5,017	1,304	68	1,561

See footnote(s) at end of table.

--continued

**Stocks in Cold Storage: By Commodity, Region,
and United States, September 30, 2005 (continued)**

Commodity	East South Central	West South Central	Mountain	Pacific	US Total
	<i>1,000 Pounds</i>	<i>1,000 Pounds</i>	<i>1,000 Pounds</i>	<i>1,000 Pounds</i>	<i>1,000 Pounds</i>
Frozen Juice					
Orange Juice Concentrate	23	4,619	1,059	43,720	1,243,452
Other Juice Concentrate	62	15,404	2,218	78,070	245,289
Frozen Vegetables ³					
Asparagus		249	6	4,740	11,641
Limas, Fordhook		124		5,300	10,459
Limas, Baby		1,783	891	23,295	41,522
Green Beans, Reg. Cut		1,056	182	127,551	264,265
Green Beans, Fr. Style		229	15	15,374	31,510
Broccoli, Spears		13,388	7	26,152	53,676
Broccoli, Chopped & Cut		14,544	494	24,853	59,738
Brussels Sprouts		808		6,136	9,735
Carrots, Diced		1,255	60	30,328	47,712
Carrots, Other		13,524	70	50,088	87,612
Cauliflower		3,428	241	13,309	23,782
Corn, Cut		1,860	7,703	321,368	536,396
Corn, Cob		1,775	7,719	159,158	272,203
Mixed Vegetables		9,849	1,867	28,971	56,553
Okra		28,296		717	41,318
Onion Rings		431	316	153	4,590
Onions, Other		1,619	13,217	15,505	39,775
Blackeye Peas		903		351	3,249
Green Peas		2,404	7,506	173,541	301,105
Peas & Carrots Mixed		941	48	2,679	5,586
Spinach		6,884	78	30,777	56,120
Squash, Summer/Zucchini		4,740	396	20,790	51,391
Southern Greens		8,571		1,283	14,255
Other Vegetables		33,289	6,374	199,328	365,875
Potatoes					
French Fries	7,674	13,606	182,733	486,528	930,609
Other Frozen	1,979	24,262	54,338	109,654	248,850
Meat					
Frozen Beef					
Boneless ⁴	11,156	76,712	8,426	52,945	396,824
Beef Cuts ⁵	1,989	6,526	8,664	3,799	46,917
Frozen Pork					
Ribs ⁶	1,917	3,830	102	1,841	55,552
Trimmings ⁷	571	2,157	26	1,201	32,955
Other ⁸	2,919	2,069	187	1,838	84,248
Other					
Veal	8	134	29	1,553	3,738
Lamb & Mutton		294	39	2,605	10,888

¹ East North Central combined with South Atlantic. Mountain and West North Central Combined with West South Central.

² Middle Atlantic combined with South Atlantic.

³ New England combined with Middle Atlantic. East South Central combined with South Atlantic.

⁴ Includes all boxed boneless beef, such as ground beef, roasts, steaks, loins, strips, rounds, trimmings, etc. Variety meats (edible offal), such as tongues, livers, hearts, kidneys, and other organs removed from slaughtered beef, are included as miscellaneous freezer stocks.

⁵ Includes all boxed primal beef cuts, bone-in.

⁶ Includes spareribs and backribs.

⁷ Includes 42% regular trimmings, 72% special trimmings, boneless picnic meat, jowls, neckbone trimmings, blade, cheek, head, and shank meat, etc. Packaged bacon, sausage, and processed items, such as hot dogs and luncheon meats, are included in miscellaneous cooler or freezer stocks.

⁸ Includes ears, tails, feet, neckbones and snouts.

**Public General Warehouses: Cold Storage Space Occupied
by Region and United States, September 2005**

Region	Cooler				Freezer			
	Usable Space	Usable Space Occupied			Usable Space	Usable Space Occupied		
		Sep 31 2005	Sep 31 2004	Aug 31 2005		Sep 31 2005	Sep 31 2005	Sep 31 2004
	<i>1,000 Cu Ft</i>	<i>Percent</i>	<i>Percent</i>	<i>Percent</i>	<i>1,000 Cu Ft</i>	<i>Percent</i>	<i>Percent</i>	<i>Percent</i>
New England	1,791	81	91	91	16,926	80	79	83
Middle Atlantic	50,146	61	61	62	143,350	62	70	73
E. North Central	69,370	60	55	56	264,355	58	56	58
W. North Central	46,372	55	51	54	156,838	66	70	74
South Atlantic	54,719	45	38	37	198,620	63	63	64
E. South Central	9,467	59	74	72	70,446	50	58	60
W. South Central	28,735	28	32	32	140,041	56	54	55
Mountain	12,153	55	55	56	61,506	71	71	73
Pacific	50,039	45	50	53	320,931	73	70	73
US	322,792	51	51	51	1,373,013	64	64	67

Cold Storage Regions



Survey Procedures: Questionnaires are mailed about the 24th of each month to all operators on the list of approximately 1,400 public and private cold storage warehouses. In addition, apple data are obtained from special surveys and other sources (State Departments of Agriculture, U.S. Apple Association, etc.). All survey data represent stocks as of the end of the month.

Data are collected from warehouses artificially cooled to a temperature of 50 degrees Fahrenheit or lower, and whose food products are normally stored for 30 days or more. All food items in these facilities are reported regardless of the number of days stored at the time of the report. Also included are specialized storage facilities meeting the 30 day requirement, such as fruit houses, dairy manufacturing plants, frozen fruit, fruit juice, and vegetable processors, and poultry and meat packing plants. Excluded are stocks in space maintained by wholesalers, jobbers, distributors, chain stores, locker plants containing individual lockers, meat packer branch houses, and frozen food processors whose entire inventories are turned over more than once a month.

Estimating Procedures: Data for reporting firms are added to estimates for non-reporting firms to obtain regional and National totals. Estimates for non-reporting firms are obtained by multiplying the previous month's figure by a percent change from the previous month. The percent change is calculated for each item from totals of the current and previous month summed from firms that reported both months.

Revision Policy: Data are revised the following month based on late reports or corrected data. Final figures are published in the annual summary in February of the following year.

Reliability: Reports are received from 900 firms each month which represent about 70 percent of the total capacity. Firms that are not on the list or firms who have never reported are not represented in the data. Monthly data can vary due to different firms reporting month to month. Survey data are also subject to non-sampling errors such as omissions and mistakes in reporting and in processing the data. While these errors cannot be measured directly, they are minimized by carefully reviewing all reported data for consistency and reasonableness.

ACCESS TO REPORTS!!

For your convenience, there are several ways to obtain NASS reports, data products, and services:

INTERNET ACCESS

All NASS reports are available free of charge on the worldwide Internet. For access, connect to the Internet and go to the NASS Home Page at: www.usda.gov/nass/. Select "Today's Reports" or Publications and then Reports Calendar or Publications and then Search, by Title or Subject.

E-MAIL SUBSCRIPTION

All NASS reports are available by subscription free of charge direct to your e-mail address. Starting with the NASS Home Page at www.usda.gov/nass/, click on **Publications**, then click on the **Subscribe by E-mail** button which takes you to the page describing e-mail delivery of reports. Finally, click on **Go to the Subscription Page** and follow the instructions.

PRINTED REPORTS OR DATA PRODUCTS

CALL OUR TOLL-FREE ORDER DESK: 800-999-6779 (U.S. and Canada)
Other areas, please call 703-605-6220 FAX: 703-605-6900
(Visa, MasterCard, check, or money order acceptable for payment.)

ASSISTANCE

For **assistance** with general agricultural statistics or further information about NASS or its products or services, contact the **Agricultural Statistics Hotline** at **800-727-9540**, 7:30 a.m. to 4:00 p.m. ET, or e-mail: nass@nass.usda.gov.

The U.S. Department of Agriculture (USDA) prohibits discrimination in all its programs and activities on the basis of race, color, national origin, age, disability, and where applicable, sex, marital status, familial status, parental status, religion, sexual orientation, genetic information, political beliefs, reprisal, or because all or part of an individual's income is derived from any public assistance program. (Not all prohibited bases apply to all programs.) Persons with disabilities who require alternative means for communication of program information (Braille, large print, audiotape, etc.) should contact USDA's TARGET Center at (202) 720-2600 (voice and TDD).

To file a complaint of discrimination, write to USDA, Director, Office of Civil Rights, 1400 Independence Avenue, S.W., Washington, D.C. 20250-9410, or call (800) 795-3272 (voice) or (202) 720-6382 (TDD). USDA is an equal opportunity provider and employer.