



NASS

FACT FINDERS FOR AGRICULTURE
UNITED STATES DEPARTMENT OF AGRICULTURE

Washington, D.C.

Cold Storage

Released November 22, 2005, by the National Agricultural Statistics Service (NASS), Agricultural Statistics Board, U.S. Department of Agriculture. For information on *Cold Storage* call David Colwell at (202) 720-8784, office hours 7:30 a.m. to 4:00 p.m. ET.

Highlights

Frozen food stocks in refrigerated warehouses on October 31, 2005 were greater than year earlier levels for frozen fruit and pork.

Butter stocks were down 19 percent from last month, and down 6 percent from a year ago.

Total red meat supplies in freezers were up 1 percent from last month and up 2 percent from last year. Frozen pork supplies were up 3 percent from last month and up 5 percent from the previous year. Stocks of pork bellies were up 10 percent from last month, but down 3 percent from last year.

Total frozen poultry supplies on October 31, 2005 were down 1 percent from the previous month and down 4 percent from a year ago. Total stocks of chicken were up 5 percent from the previous month, but down 1 percent from last year. Total pounds of turkey in freezers were down 11 percent from last month and down 10 percent from October 31, 2004.

Special Note

Included in this issue are revisions to Frozen Apples for the months of April through December, 2004. Also, revised are Total Frozen Fruit, and Frozen Apples in the East North Central Region for the same time period. This information was first published in the September issue of *Cold Storage*.

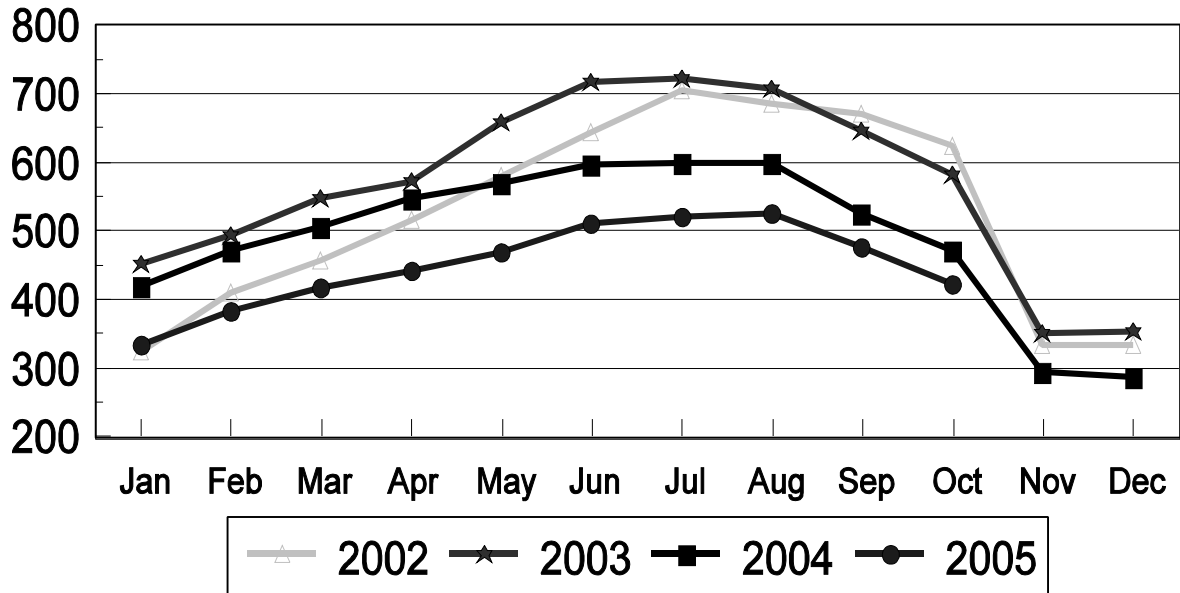
This page is intentionally blank.

Contents

	Page
Frozen Apples: Revisions for April through December, 2004	1
Stocks in Cold Storage: By Commodity, United States, October 2005	2
Stocks in Cold Storage: By Commodity, Region, and United States, September 30, 2005, Revised	6
Stocks in Cold Storage: By Commodity, Region, and United States, October 31, 2005	10
Public General Warehouses: Cold Storage Space Occupied by Region and United States, October 2005	14
Apples in Cold Storage: By State and United States, October 2005	15
Survey and Estimating Procedures, Revision Policy and Reliability	16
Access to Reports	17

Total Frozen Turkey-United States Cold Storage Stocks, 2002-2005

Million Pounds



**Stocks in Cold Storage: By Commodity,
United States, 2004-2005**

Year and Month	United States		East North Central Region
	Frozen Apples	Total Frozen Fruit	Frozen Apples
	<i>1,000 Pounds</i>	<i>1,000 Pounds</i>	<i>1,000 Pounds</i>
2004			
January	48,596	895,506	28,024
February	50,778	803,321	28,059
March	55,604	715,709	28,050
*April	76,921	724,805	48,094
*May	73,897	759,481	46,605
*June	66,704	839,835	41,353
*July	58,519	1,070,294	36,449
*August	50,023	1,059,966	32,277
*September	40,485	1,036,710	25,688
*October	50,749	1,210,340	31,432
*November	59,468	1,181,257	37,944
*December	65,909	1,093,884	42,481
2005			
January	73,385	989,394	45,183
February	89,864	879,606	55,430
March	89,064	753,493	54,748
April	93,849	711,997	57,272
May	89,909	687,592	54,494
June	85,145	769,159	50,570
July	76,457	1,055,978	44,270
August	62,272	1,067,640	36,781
September	50,321	996,641	29,899
October			
November			
December			

* Revised, based on updated plant information.

**Stocks in Cold Storage: By Commodity,
United States, October 2005**

Commodity	Stocks in All Warehouses			Percent of		Public Warehouse Stocks
	Oct 31, 2004	Sep 30, 2005	Oct 31, 2005	Oct 2004	Sep 2005	Oct 31, 2005
	<i>1,000 Pounds</i>	<i>1,000 Pounds</i>	<i>1,000 Pounds</i>	<i>Percent</i>	<i>Percent</i>	<i>1,000 Lbs</i>
Fresh Fruit						
Apples						
Regular Storage	1,595,369	1,009,941	1,563,343	98	155	
Controlled Atmosphere	4,695,285	1,968,279	4,258,308	91	216	
Total	6,290,654	2,978,220	5,821,651	93	195	5,846
Pears						
Bartlett	53,753	109,403	56,456	105	52	
Other Varieties	421,380	330,978	427,004	101	129	
Total	475,133	440,381	483,460	102	110	513
Nuts						
Shelled						
Peanuts	230,565	219,375	267,260	116	122	
Pecans	20,077	23,010	16,667	83	72	
Other Shelled	90,438	89,024	89,845	99	101	
Total	341,080	331,409	373,772	110	113	149,533
In-Shell						
Peanuts	11,176	14,944	16,658	149	111	
Pecans	27,460	13,910	8,304	30	60	
Other In-Shell	11,099	7,729	9,133	82	118	
Total	49,735	36,583	34,095	69	93	11,996
Dairy Products						
Butter, Total	107,152	124,061	100,528	94	81	85,566
(Government Owned)	91	44	40	44	91	
Natural Cheese						
American, Total	528,234	551,391	524,586	99	95	
(Government Owned)	6,868	844	844	12	100	
Swiss	26,155	24,238	25,457	97	105	
Other Natural Cheese	201,729	189,728	187,057	93	99	
Total	756,118	765,357	737,100	97	96	397,379
Eggs, Frozen						
Whites	2,888	2,908	2,941	102	101	
Yolks	1,321	1,217	1,133	86	93	
Whole & Mixed	10,052	11,198	10,144	101	91	
Unclassified	3,616	3,514	3,356	93	96	
Total	17,877	18,837	17,574	98	93	17,134
Frozen Poultry						
Chicken						
Broilers, Fryers						
Roasters (Whole)	25,783	21,989	23,069	89	105	
Hens, Mature Chickens	3,862	1,885	2,248	58	119	
Breasts & Breast Meat	135,275	136,933	144,808	107	106	
Drumsticks	14,860	11,779	12,393	83	105	
Leg Quarters	116,900	109,658	113,548	97	104	
Legs	9,227	12,021	13,742	149	114	
Thigh & Thigh Quarters	15,425	9,321	9,685	63	104	
Thigh Meat	15,141	9,368	10,152	67	108	
Wings	39,695	42,746	46,289	117	108	
Paws and Feet	16,608	10,146	10,734	65	106	
Other	407,518	389,036	404,816	99	104	
Total Chicken	800,294	754,882	791,484	99	105	

See footnote(s) at end of table.

--continued

**Stocks in Cold Storage: By Commodity,
United States, October 2005**

Commodity	Stocks in All Warehouses			Percent of		Public Warehouse Stocks
	Oct 31, 2004	Sep 30, 2005	Oct 31, 2005	Oct 2004	Sep 2005	Oct 31, 2005
	<i>1,000 Pounds</i>	<i>1,000 Pounds</i>	<i>1,000 Pounds</i>	<i>Percent</i>	<i>Percent</i>	<i>1,000 Lbs</i>
Turkeys						
Toms (Whole Carcasses)	156,514	158,100	134,585	86	85	
Hens (Whole Carcasses)	91,770	107,494	91,785	100	85	
Whole Turkeys	248,284	265,594	226,370	91	85	
Other Turkey	224,059	212,207	197,087	88	93	
Total Turkey	472,343	477,801	423,457	90	89	335,211
Ducks	823	2,452	4,251	517	173	
Total Poultry	1,273,460	1,235,135	1,219,192	96	99	1,083,500
Frozen Fruit						
Apples	50,749	50,321	54,932	108	109	
Apricots	8,033	6,358	5,802	72	91	
Blackberries, Total	35,970	32,441	29,366	82	91	
IQF	24,310	21,099	18,024	74	85	
Pails and Tubs	4,303	5,319	5,158	120	97	
Barrels, 400 lbs net	7,078	5,724	5,926	84	104	
Concentrate	279	299	258	92	86	
Blueberries	103,575	109,229	95,930	93	88	
Boysenberries	1,798	2,724	2,889	161	106	
Cherries, Tart (RTP)	92,953	139,969	131,878	142	94	
Cherries, Tart (Juice)	1,837	2,795	2,544	138	91	
Cherries, Sweet	9,327	12,736	11,396	122	89	
Grapes	9,794	3,659	8,427	86	230	
Peaches	86,544	72,567	72,933	84	101	
Raspberries, Black	1,311	2,003	1,647	126	82	
Raspberries, Red, Total	53,502	78,107	72,816	136	93	
IQF	22,520	23,581	21,161	94	90	
Pails and Tubs	11,835	15,199	14,453	122	95	
Barrels, 400 lbs net	18,380	37,354	35,097	191	94	
Concentrate	767	1,973	2,105	274	107	
Strawberries, Total	356,203	324,809	279,524	78	86	
IQF and Poly	184,856	155,502	135,730	73	87	
Pails and Tubs	106,447	103,435	89,099	84	86	
Barrels and Drums	50,222	52,671	44,470	89	84	
Juice Stock	14,678	13,201	10,225	70	77	
Other Frozen Fruit	398,744	158,923	459,552	115	289	
Total	1,210,339	996,641	1,229,636	102	123	1,052,149
Frozen Juice						
Orange Juice Conc. ¹	1,516,773	1,243,274	1,139,868	75	92	
(Gallon Equivalent)	153,271	125,634	115,185			
Other Juice Concentrate	296,198	235,197	254,033	86	108	
Total	1,812,971	1,478,471	1,393,901	77	94	207,217

See footnote(s) at end of table.

--continued

**Stocks in Cold Storage: By Commodity,
United States, October 2005**

Commodity	Stocks in All Warehouses			Percent of		Public Warehouse Stocks
	Oct 31, 2004	Sep 30, 2005	Oct 31, 2005	Oct 2004	Sep 2005	Oct 31, 2005
	<i>1,000 Pounds</i>	<i>1,000 Pounds</i>	<i>1,000 Pounds</i>	<i>Percent</i>	<i>Percent</i>	<i>1,000 Lbs</i>
Frozen Vegetables						
Asparagus	10,933	11,714	10,026	92	86	
Limas, Fordhook	10,986	10,494	9,145	83	87	
Limas, Baby	56,332	41,422	47,859	85	116	
Green Beans, Reg. Cut	227,307	256,015	240,008	106	94	
Green Beans, Fr. Style	30,875	33,938	32,189	104	95	
Broccoli, Spears	39,441	43,342	39,730	101	92	
Broccoli, Chopped & Cut	58,362	60,840	62,701	107	103	
Brussels Sprouts	11,397	9,768	11,802	104	121	
Carrots, Diced	89,750	45,283	85,943	96	190	
Carrots, Other	137,590	87,458	147,052	107	168	
Cauliflower	25,736	23,935	34,251	133	143	
Corn, Cut	620,274	521,330	551,808	89	106	
Corn, Cob	303,479	256,009	293,214	97	115	
Mixed Vegetables	53,409	56,989	53,772	101	94	
Okra	42,607	40,637	39,887	94	98	
Onion Rings	7,120	4,555	4,753	67	104	
Onions, Other	30,978	36,163	39,197	127	108	
Blackeye Peas	2,713	3,376	3,151	116	93	
Green Peas	300,471	306,054	285,541	95	93	
Peas & Carrots Mixed	5,758	5,926	6,882	120	116	
Spinach	47,681	56,152	53,954	113	96	
Squash, Summer/Zucchini	51,971	51,596	64,726	125	125	
Southern Greens	14,048	14,446	13,961	99	97	
Other Vegetables	393,788	379,018	380,497	97	100	
Total	2,573,006	2,356,460	2,512,049	98	107	1,951,786
Potatoes						
French Fries	1,000,376	932,179	963,069	96	103	
Other Frozen	274,491	248,179	241,527	88	97	
Total	1,274,867	1,180,358	1,204,596	94	102	920,142

See footnote(s) at end of table.

--continued

**Stocks in Cold Storage: By Commodity,
United States, October 2005**

Commodity	Stocks in All Warehouses			Percent of		Public Warehouse Stocks
	Oct 31, 2004	Sep 30, 2005	Oct 31, 2005	Oct 2004	Sep 2005	Oct 31, 2005
	<i>1,000 Pounds</i>	<i>1,000 Pounds</i>	<i>1,000 Pounds</i>	<i>Percent</i>	<i>Percent</i>	<i>1,000 Lbs</i>
Meat						
Frozen Beef						
Boneless ²	404,923	392,153	390,130	96	99	
Beef Cuts ³	47,666	46,597	49,179	103	106	
Total	452,589	438,750	439,309	97	100	437,208
(Government Owned)	5,173	2,020	2,509	49	124	
Frozen Pork						
Picnics, Bone-in	13,123	9,397	13,447	102	143	
Hams, Total	96,286	105,151	93,826	97	89	89,474
Bone-in	58,827	64,810	54,962	93	85	54,125
Boneless ⁴	37,459	40,341	38,864	104	96	35,349
Bellies	15,970	14,117	15,520	97	110	
Loins, Total	34,932	31,551	37,020	106	117	34,543
Bone-in	19,917	19,064	20,986	105	110	
Boneless ⁵	15,015	12,487	16,034	107	128	
Ribs ⁶	57,674	55,473	59,656	103	108	
Butts	7,172	7,289	7,866	110	108	
Trimming ⁷	26,515	33,232	30,889	116	93	
Other ⁸	78,734	84,229	87,696	111	104	
Variety Meats ⁹	45,198	32,463	33,862	75	104	
Unclassified ¹⁰	47,454	58,671	64,076	135	109	
Total	423,058	431,573	443,858	105	103	393,167
(Government Owned)	1,366	345	442	32	128	
Other						
Veal	3,768	3,688	4,135	110	112	
Lamb & Mutton	4,166	10,942	10,117	243	92	
Total	7,934	14,630	14,252	180	97	14,176
Canned						
Canned Hams	4,350	4,058	3,512	81	87	
Other Canned Meat	1,298	1,921	2,425	187	126	
Total	5,648	5,979	5,937	105	99	5,907
Total	889,229	890,932	903,356	102	101	850,458
Miscellaneous						
Cooler	927,612	789,348	974,416	105	123	380,190
Freezer	2,113,429	2,211,732	2,158,035	102	98	2,101,431
Total	3,041,041	3,001,080	3,132,451	103	104	2,481,621
Commodities						
Stored in Coolers	8,859,004	5,358,161	8,439,236	95	158	1,124,829
Stored in Freezers	11,253,658	10,475,764	10,724,125	95	102	8,263,476
Total	20,112,662	15,833,925	19,163,361	95	121	9,388,305

¹ Adjusted to 42.0 degrees Brix equivalent (9.896 pounds per gallon).

² Includes all boxed boneless beef, such as ground beef, roasts, steaks, loins, strips, rounds, trimmings, etc. Variety meats (edible offal), such as tongues, livers, hearts, kidneys, and other organs removed from slaughtered beef, are included as miscellaneous freezer stocks.

³ Includes all boxed primal beef cuts, bone-in.

⁴ Includes full ham, bone removed and individual muscles separated.

⁵ Includes pork tenderloins.

⁶ Includes spareribs and backribs.

⁷ Includes 42% regular trimmings, 72% special trimmings, boneless picnic meat, jowls, neckbone trimmings, blade, cheek, head, and shank meat, etc. Packaged bacon, sausage, and processed items, such as hot dogs and luncheon meats, are included in miscellaneous cooler or freezer stocks.

⁸ Includes ears, tails, feet, neckbones and snouts.

⁹ Includes tongues, kidneys, livers, stomachs, hearts, chitterlings, salivary glands, and other organs removed from slaughtered hogs.

¹⁰ Includes product unable to be classified elsewhere in this report.

**Stocks in Cold Storage: By Commodity, Region,
and United States, September 30, 2005, Revised**

Commodity	New England	Middle Atlantic	East North Central	West North Central	South Atlantic
	<i>1,000 Pounds</i>	<i>1,000 Pounds</i>	<i>1,000 Pounds</i>	<i>1,000 Pounds</i>	<i>1,000 Pounds</i>
Total Fresh Apples		269,893	18,410	16	38
Nuts					
Shelled					
Peanuts		15	13	11	140,339
Pecans ¹	65	134			4,788
In-Shell					
Pecans ¹					1,012
Dairy Products					
Natural Cheese					
American, Total	26,149	54,163	223,106	111,652	7,733
Other Natural Cheese	38	11,387	105,849	55,465	120
Frozen Poultry					
Chicken					
Broilers, Fryers					
Roasters (Whole)		2,059	285	802	5,048
Hens, Mature Chickens	11	231	115	69	556
Other	716	28,680	15,280	37,918	269,184
Total Chicken	727	30,970	15,680	38,789	274,788
Turkeys					
Whole Turkeys	6,853	26,687	13,555	38,099	54,948
Other Turkey	723	4,274	16,634	55,868	69,014
Total Turkey	7,576	30,961	30,189	93,967	123,962
Ducks		74	2,179	1	52
Total Poultry	8,303	62,005	48,048	132,757	398,802
Frozen Fruit					
Apples	229	12,685	29,899	119	267
Blueberries	10,281	11,361	44,522	2,771	4,670
Cherries, Tart (RTP)	68	6,564	111,371	147	936
Cherries, Sweet		174	8,293	143	1
Peaches	103	2,576	14,425	2,051	686
Raspberries, Red	115	1,546	1,458	655	204
Strawberries, Total	69	5,330	7,614	1,590	2,373
Other Frozen Fruit	248	5,126	73,096	3,713	872

See footnote(s) at end of table.

--continued

**Stocks in Cold Storage: By Commodity, Region,
and United States, September 30, 2005, Revised, (continued)**

Commodity	East South Central	West South Central	Mountain	Pacific	US Total
	<i>1,000 Pounds</i>	<i>1,000 Pounds</i>	<i>1,000 Pounds</i>	<i>1,000 Pounds</i>	<i>1,000 Pounds</i>
Total Fresh Apples		205	51	2,689,607	2,978,220
Nuts					
Shelled					
Peanuts	13,415	65,408	75	99	219,375
Pecans ¹	437	17,410		176	23,010
In-Shell					
Pecans ¹	407	12,491			13,910
Dairy Products					
Natural Cheese					
American, Total	334	5,444	39,828	82,982	551,391
Other Natural Cheese	2,512	391	950	13,016	189,728
Frozen Poultry					
Chicken					
Broilers, Fryers					
Roasters (Whole)	5,581	5,759	466	1,989	21,989
Hens, Mature Chickens	154	514	11	224	1,885
Other	142,157	200,767	2,483	33,823	731,008
Total Chicken	147,892	207,040	2,960	36,036	754,882
Turkeys					
Whole Turkeys	5,433	64,434	17,474	38,111	265,594
Other Turkey	3,665	22,273	9,741	30,015	212,207
Total Turkey	9,098	86,707	27,215	68,126	477,801
Ducks	14	7	27	98	2,452
Total Poultry	157,004	293,754	30,202	104,260	1,235,135
Frozen Fruit					
Apples	2	861	49	6,210	50,321
Blueberries	167	587	106	34,764	109,229
Cherries, Tart (RTP)		135	16,719	4,029	139,969
Cherries, Sweet	1	131	25	3,968	12,736
Peaches	48	520	84	52,074	72,567
Raspberries, Red	117	502	62	73,448	78,107
Strawberries, Total	989	25,548	138	281,158	324,809
Other Frozen Fruit	96	10,409	3,094	62,269	158,923

See footnote(s) at end of table.

--continued

**Stocks in Cold Storage: By Commodity, Region,
and United States, September 30, 2005, Revised**

Commodity	New England	Middle Atlantic	East North Central	West North Central	South Atlantic
	<i>1,000 Pounds</i>	<i>1,000 Pounds</i>	<i>1,000 Pounds</i>	<i>1,000 Pounds</i>	<i>1,000 Pounds</i>
Frozen Juice					
Orange Juice Conc. ²	14		638	335	1,193,093
Other Juice Concentrate	4,508	25,036	23,641	1,463	84,835
Frozen Vegetables ³					
Asparagus		579	5,941	27	99
Limas, Fordhook		2,742	1,572		756
Limas, Baby		6,260	2,339	245	6,701
Green Beans, Reg. Cut		42,834	65,904	2,272	24,085
Green Beans, Fr. Style		7,210	7,508	172	1,349
Broccoli, Spears		5,509	4,926		3,633
Broccoli, Chopped & Cut		6,324	8,185	2,019	3,400
Brussels Sprouts		1,398	1,061	1	372
Carrots, Diced		2,875	10,014	195	2,728
Carrots, Other		8,377	11,121	651	3,923
Cauliflower		3,537	2,174	233	778
Corn, Cut		59,821	78,367	45,101	22,542
Corn, Cob		17,930	39,138	31,364	13,558
Mixed Vegetables		4,999	8,823	8	2,016
Okra		1,996	705	5,350	4,005
Onion Rings		179	2,933	447	108
Onions, Other		3,316	3,938	270	1,909
Blackeye Peas		322	15		1,625
Green Peas		46,650	33,898	22,645	14,297
Peas & Carrots Mixed		918	1,184		154
Spinach		10,191	5,268	75	2,839
Squash, Summer/Zucchini		2,550	21,053		1,722
Southern Greens		1,427	699	1	2,465
Other Vegetables		42,170	54,729	8,477	20,950
Potatoes					
French Fries	31,904	23,294	57,745	107,385	21,267
Other Frozen	4,477	9,408	33,687	8,371	2,298
Meat					
Frozen Beef					
Boneless ⁴	1,335	52,532	37,576	126,760	23,808
Beef Cuts ⁵	237	1,410	6,705	11,779	5,487
Frozen Pork					
Ribs ⁶	204	465	10,364	25,277	11,473
Trimmings ⁷	23	314	8,292	18,245	2,403
Other ⁸	7,869	445	12,529	42,420	13,953
Other					
Veal		958	873	68	65
Lamb & Mutton		5,071	1,304	68	1,561

See footnote(s) at end of table.

--continued

**Stocks in Cold Storage: By Commodity, Region,
and United States, September 30, 2005, Revised, (continued)**

Commodity	East South Central	West South Central	Mountain	Pacific	US Total
	<i>1,000 Pounds</i>	<i>1,000 Pounds</i>	<i>1,000 Pounds</i>	<i>1,000 Pounds</i>	<i>1,000 Pounds</i>
Frozen Juice					
Orange Juice Concentrate	23	4,619	1,103	43,449	1,243,274
Other Juice Concentrate	62	15,404	2,145	78,103	235,197
Frozen Vegetables ³					
Asparagus		249	47	4,772	11,714
Limas, Fordhook		124		5,300	10,494
Limas, Baby		1,932	891	23,054	41,422
Green Beans, Reg. Cut		1,066	163	119,691	256,015
Green Beans, Fr. Style		310	15	17,374	33,938
Broccoli, Spears		12,663	7	16,604	43,342
Broccoli, Chopped & Cut		14,647	564	25,701	60,840
Brussels Sprouts		811		6,125	9,768
Carrots, Diced		1,667	60	27,744	45,283
Carrots, Other		13,300	59	50,027	87,458
Cauliflower		3,420	264	13,529	23,935
Corn, Cut		2,100	7,640	305,759	521,330
Corn, Cob		1,740	7,719	144,560	256,009
Mixed Vegetables		11,485	1,867	27,791	56,989
Okra		27,866		715	40,637
Onion Rings		419	316	153	4,555
Onions, Other		1,619	13,242	11,869	36,163
Blackeye Peas		1,063		351	3,376
Green Peas		2,828	7,502	178,234	306,054
Peas & Carrots Mixed		941	48	2,681	5,926
Spinach		6,944	77	30,758	56,152
Squash, Summer/Zucchini		4,825	252	21,194	51,596
Southern Greens		8,571		1,283	14,446
Other Vegetables		33,289	6,363	213,040	379,018
Potatoes					
French Fries	7,674	13,606	182,743	486,561	932,179
Other Frozen	1,979	24,046	54,357	109,556	248,179
Meat					
Frozen Beef					
Boneless ⁴	11,156	77,618	8,423	52,945	392,153
Beef Cuts ⁵	1,989	6,526	8,664	3,800	46,597
Frozen Pork					
Ribs ⁶	1,917	3,830	102	1,841	55,473
Trimming ⁷	571	2,157	26	1,201	33,232
Other ⁸	2,919	2,069	187	1,838	84,229
Other					
Veal	8	134	29	1,553	3,688
Lamb & Mutton		294	39	2,605	10,942

¹ East North Central combined with South Atlantic. Mountain and West North Central combined with West South Central.

² Middle Atlantic combined with South Atlantic.

³ New England combined with Middle Atlantic. East South Central combined with South Atlantic.

⁴ Includes all boxed boneless beef, such as ground beef, roasts, steaks, loins, strips, rounds, trimmings, etc. Variety meats (edible offal), such as tongues, livers, hearts, kidneys, and other organs removed from slaughtered beef, are included as miscellaneous freezer stocks.

⁵ Includes all boxed primal beef cuts, bone-in.

⁶ Includes spareribs and backribs.

⁷ Includes 42% regular trimmings, 72% special trimmings, boneless picnic meat, jowls, neckbone trimmings, blade, cheek, head, and shank meat, etc. Packaged bacon, sausage, and processed items, such as hot dogs and luncheon meats, are included in miscellaneous cooler or freezer stocks.

⁸ Includes ears, tails, feet, neckbones and snouts.

**Stocks in Cold Storage: By Commodity, Region,
and United States, October 31, 2005**

Commodity	New England	Middle Atlantic	East North Central	West North Central	South Atlantic
	<i>1,000 Pounds</i>	<i>1,000 Pounds</i>	<i>1,000 Pounds</i>	<i>1,000 Pounds</i>	<i>1,000 Pounds</i>
Total Fresh Apples	31,852	539,634	389,717	4,897	245,227
Nuts					
Shelled					
Peanuts		33	15	14	192,960
Pecans ¹	58	83			3,536
In-Shell					
Pecans ¹					729
Dairy Products					
Natural Cheese					
American, Total	24,575	52,597	202,054	110,168	5,659
Other Natural Cheese	34	11,624	104,594	53,021	105
Frozen Poultry					
Chicken					
Broilers, Fryers					
Roasters (Whole)		2,148	261	789	5,278
Hens, Mature Chickens	12	261	205	67	635
Other	682	29,669	18,156	41,064	288,722
Total Chicken	694	32,078	18,622	41,920	294,635
Turkeys					
Whole Turkeys	6,554	24,913	11,734	30,675	56,537
Other Turkey	135	5,062	16,046	51,308	65,495
Total Turkey	6,689	29,975	27,780	81,983	122,032
Ducks		81	3,947	1	49
Total Poultry	7,383	62,134	50,349	123,904	416,716
Frozen Fruit					
Apples	251	13,609	33,160	112	298
Blueberries	9,324	10,048	39,090	2,526	3,374
Cherries, Tart (RTP)	64	6,332	105,262	115	881
Cherries, Sweet		186	7,326	110	1
Peaches	102	2,814	14,431	1,886	672
Raspberries, Red	107	1,470	1,535	529	195
Strawberries, Total	60	5,291	9,762	1,412	2,100
Other Frozen Fruit	1,039	9,135	288,680	9,232	2,065

See footnote(s) at end of table.

--continued

**Stocks in Cold Storage: By Commodity, Region,
and United States, October 31, 2005 (continued)**

Commodity	East South Central	West South Central	Mountain	Pacific	US Total
	<i>1,000 Pounds</i>	<i>1,000 Pounds</i>	<i>1,000 Pounds</i>	<i>1,000 Pounds</i>	<i>1,000 Pounds</i>
Total Fresh Apples	248	8,820	66,707	4,534,549	5,821,651
Nuts					
Shelled					
Peanuts	16,358	57,687	76	117	267,260
Pecans ¹	250	12,639		101	16,667
In-Shell					
Pecans ¹	293	7,282			8,304
Dairy Products					
Natural Cheese					
American, Total	427	5,372	35,663	88,071	524,586
Other Natural Cheese	2,483	448	782	13,966	187,057
Frozen Poultry					
Chicken					
Broilers, Fryers					
Roasters (Whole)	5,490	6,686	510	1,907	23,069
Hens, Mature Chickens	148	673	35	212	2,248
Other	141,242	209,929	2,771	33,932	766,167
Total Chicken	146,880	217,288	3,316	36,051	791,484
Turkeys					
Whole Turkeys	6,643	46,563	12,816	29,935	226,370
Other Turkey	2,740	20,038	9,917	26,346	197,087
Total Turkey	9,383	66,601	22,733	56,281	423,457
Ducks	14	7	27	125	4,251
Total Poultry	156,277	283,896	26,076	92,457	1,219,192
Frozen Fruit					
Apples	5	879	43	6,575	54,932
Blueberries	158	555	127	30,728	95,930
Cherries, Tart (RTP)		123	15,771	3,330	131,878
Cherries, Sweet	1	101	8	3,663	11,396
Peaches	48	571	70	52,339	72,933
Raspberries, Red	109	399	58	68,414	72,816
Strawberries, Total	835	21,579	116	238,369	279,524
Other Frozen Fruit	171	9,201	2,657	137,372	459,552

See footnote(s) at end of table.

--continued

**Stocks in Cold Storage: By Commodity, Region,
and United States, October 31, 2005**

Commodity	New England	Middle Atlantic	East North Central	West North Central	South Atlantic
	<i>1,000 Pounds</i>	<i>1,000 Pounds</i>	<i>1,000 Pounds</i>	<i>1,000 Pounds</i>	<i>1,000 Pounds</i>
Frozen Juice					
Orange Juice Conc. ²	13		639	183	1,095,086
Other Juice Concentrate	7,281	31,853	33,792	1,271	84,313
Frozen Vegetables ³					
Asparagus		540	4,809	27	152
Limas, Fordhook		2,613	1,373		696
Limas, Baby		7,842	3,899	245	8,321
Green Beans, Reg. Cut		41,284	59,849	2,640	22,676
Green Beans, Fr. Style		7,681	6,695	172	1,239
Broccoli, Spears		6,162	3,465		3,296
Broccoli, Chopped & Cut		6,568	5,379	1,455	4,099
Brussels Sprouts		1,619	1,084	1	436
Carrots, Diced		8,197	15,024	651	5,358
Carrots, Other		15,404	27,110	939	6,601
Cauliflower		4,429	2,856	175	1,060
Corn, Cut		54,951	96,295	44,431	22,996
Corn, Cob		15,418	42,024	33,000	14,931
Mixed Vegetables		4,481	7,074	8	2,292
Okra		1,980	611	6,517	3,488
Onion Rings		262	2,966	468	102
Onions, Other		2,833	3,930	246	2,693
Blackeye Peas		299	50		1,516
Green Peas		40,399	37,331	23,976	13,731
Peas & Carrots Mixed		1,014	975	1	177
Spinach		9,856	3,839	58	3,104
Squash, Summer/Zucchini		3,276	24,320	618	2,011
Southern Greens		1,395	573	1	2,381
Other Vegetables		42,738	56,197	10,972	23,290
Potatoes					
French Fries	33,335	22,581	62,348	91,603	22,653
Other Frozen	5,402	9,208	31,503	8,095	2,567
Meat					
Frozen Beef					
Boneless ⁴	1,355	49,580	45,283	120,437	24,272
Beef Cuts ⁵	196	1,532	5,649	14,590	4,561
Frozen Pork					
Ribs ⁶	207	374	9,924	30,137	11,349
Trimmings ⁷	31	357	7,132	17,883	1,340
Other ⁸	7,951	533	14,986	43,768	13,679
Other					
Veal		880	918	79	82
Lamb & Mutton		5,746	1,418	51	209

See footnote(s) at end of table.

--continued

**Stocks in Cold Storage: By Commodity, Region,
and United States, October 31, 2005 (continued)**

Commodity	East South Central	West South Central	Mountain	Pacific	US Total
	<i>1,000 Pounds</i>	<i>1,000 Pounds</i>	<i>1,000 Pounds</i>	<i>1,000 Pounds</i>	<i>1,000 Pounds</i>
Frozen Juice					
Orange Juice Concentrate	21	3,251	1,020	39,655	1,139,868
Other Juice Concentrate	66	16,026	1,803	77,628	254,033
Frozen Vegetables ³					
Asparagus		239	35	4,224	10,026
Limas, Fordhook		95		4,368	9,145
Limas, Baby		906	568	26,078	47,859
Green Beans, Reg. Cut		1,083	184	112,292	240,008
Green Beans, Fr. Style		168	15	16,219	32,189
Broccoli, Spears		13,450	1	13,356	39,730
Broccoli, Chopped & Cut		16,883	536	27,781	62,701
Brussels Sprouts		719		7,943	11,802
Carrots, Diced		1,699	28	54,986	85,943
Carrots, Other		12,821	149	84,028	147,052
Cauliflower		3,919	175	21,637	34,251
Corn, Cut		1,785	7,977	323,373	551,808
Corn, Cob		1,344	7,719	178,778	293,214
Mixed Vegetables		9,073	1,806	29,038	53,772
Okra		26,521		770	39,887
Onion Rings		313	483	159	4,753
Onions, Other		2,159	13,936	13,400	39,197
Blackeye Peas		933	6	347	3,151
Green Peas		3,014	6,100	160,990	285,541
Peas & Carrots Mixed		991	32	3,692	6,882
Spinach		8,309	64	28,724	53,954
Squash, Summer/Zucchini		4,688	299	29,514	64,726
Southern Greens		8,331		1,280	13,961
Other Vegetables		32,482	6,319	208,499	380,497
Potatoes					
French Fries	7,925	17,190	193,746	511,688	963,069
Other Frozen	2,508	20,899	55,260	106,085	241,527
Meat					
Frozen Beef					
Boneless ⁴	5,480	81,071	8,990	53,662	390,130
Beef Cuts ⁵	1,916	7,334	9,405	3,996	49,179
Frozen Pork					
Ribs ⁶	2,088	3,722	135	1,720	59,656
Trimmings ⁷	759	2,081	15	1,291	30,889
Other ⁸	3,061	1,903	280	1,535	87,696
Other					
Veal	8	298		1,870	4,135
Lamb & Mutton		290	91	2,312	10,117

¹ East North Central combined with South Atlantic. Mountain and West North Central Combined with West South Central.

² Middle Atlantic combined with South Atlantic.

³ New England combined with Middle Atlantic. East South Central combined with South Atlantic.

⁴ Includes all boxed boneless beef, such as ground beef, roasts, steaks, loins, strips, rounds, trimmings, etc. Variety meats (edible offal), such as tongues, livers, hearts, kidneys, and other organs removed from slaughtered beef, are included as miscellaneous freezer stocks.

⁵ Includes all boxed primal beef cuts, bone-in.

⁶ Includes spareribs and backribs.

⁷ Includes 42% regular trimmings, 72% special trimmings, boneless picnic meat, jowls, neckbone trimmings, blade, cheek, head, and shank meat, etc. Packaged bacon, sausage, and processed items, such as hot dogs and luncheon meats, are included in miscellaneous cooler or freezer stocks.

⁸ Includes ears, tails, feet, neckbones and snouts.

**Public General Warehouses: Cold Storage Space Occupied
by Region and United States, October 2005**

Region	Cooler				Freezer			
	Usable Space	Usable Space Occupied			Usable Space	Usable Space Occupied		
	Oct 31 2005	Oct 31 2004	Sep 30 2005	Oct 31 2005	Oct 31 2005	Oct 31 2004	Sep 30 2005	Oct 31 2005
	<i>1,000 Cu Ft</i>	<i>Percent</i>	<i>Percent</i>	<i>Percent</i>	<i>1,000 Cu Ft</i>	<i>Percent</i>	<i>Percent</i>	<i>Percent</i>
New England	1,801	82	91	89	16,926	85	83	82
Middle Atlantic	50,775	62	62	64	143,308	65	73	75
E. North Central	71,650	60	56	57	266,725	61	58	60
W. North Central	46,773	54	54	53	157,398	67	74	73
South Atlantic	55,505	47	37	40	198,555	60	64	65
E. South Central	9,582	62	72	73	70,446	50	60	61
W. South Central	29,118	25	32	31	140,040	53	55	54
Mountain	12,226	55	56	58	61,506	70	73	75
Pacific	50,851	48	53	54	320,818	71	73	75
US	328,281	52	51	53	1,375,722	64	67	68

Cold Storage Regions



**Apples in Cold Storage: By State
and United States, October 2005**

State	All Warehouses		
	Oct 31 2004	Sep 30 2005	Oct 31 2005
	<i>1,000 Pounds</i>	<i>1,000 Pounds</i>	
CA	85,188	34,284	78,275
MI	336,351	2,097	351,515
N ENG	47,809	0	31,852
NY	352,590	109,368	279,846
OH	23,250	16,292	25,430
OR	74,426	5,318	56,274
PA	280,000	160,524	259,434
VA	150,554	0	129,118
WA	4,700,000	2,650,006	4,400,000
WV	82,991	0	58,140
Other States	157,495	331	151,767
US	6,290,654	2,978,220	5,821,651

Survey Procedures: Questionnaires are mailed about the 24th of each month to all operators on the list of approximately 1,400 public and private cold storage warehouses. In addition, apple data are obtained from special surveys and other sources (State Departments of Agriculture, U.S. Apple Association, etc.). All survey data represent stocks as of the end of the month.

Data are collected from warehouses artificially cooled to a temperature of 50 degrees Fahrenheit or lower, and whose food products are normally stored for 30 days or more. All food items in these facilities are reported regardless of the number of days stored at the time of the report. Also included are specialized storage facilities meeting the 30 day requirement, such as fruit houses, dairy manufacturing plants, frozen fruit, fruit juice, and vegetable processors, and poultry and meat packing plants. Excluded are stocks in space maintained by wholesalers, jobbers, distributors, chain stores, locker plants containing individual lockers, meat packer branch houses, and frozen food processors whose entire inventories are turned over more than once a month.

Estimating Procedures: Data for reporting firms are added to estimates for non-reporting firms to obtain regional and National totals. Estimates for non-reporting firms are obtained by multiplying the previous month's figure by a percent change from the previous month. The percent change is calculated for each item from totals of the current and previous month summed from firms that reported both months.

Revision Policy: Data are revised the following month based on late reports or corrected data. Final figures are published in the annual summary in February of the following year.

Reliability: Reports are received from 900 firms each month which represent about 70 percent of the total capacity. Firms that are not on the list or firms who have never reported are not represented in the data. Monthly data can vary due to different firms reporting month to month. Survey data are also subject to non-sampling errors such as omissions and mistakes in reporting and in processing the data. While these errors cannot be measured directly, they are minimized by carefully reviewing all reported data for consistency and reasonableness.

ACCESS TO REPORTS!!

For your convenience, there are several ways to obtain NASS reports, data products, and services:

INTERNET ACCESS

All NASS reports are available free of charge on the worldwide Internet. For access, connect to the Internet and go to the NASS Home Page at: www.usda.gov/nass/. Select "Today's Reports" or Publications and then Reports Calendar or Publications and then Search, by Title or Subject.

E-MAIL SUBSCRIPTION

All NASS reports are available by subscription free of charge direct to your e-mail address. Starting with the NASS Home Page at www.usda.gov/nass/, click on **Publications**, then click on the **Subscribe by E-mail** button which takes you to the page describing e-mail delivery of reports. Finally, click on **Go to the Subscription Page** and follow the instructions.

PRINTED REPORTS OR DATA PRODUCTS

CALL OUR TOLL-FREE ORDER DESK: 800-999-6779 (U.S. and Canada)
Other areas, please call 703-605-6220 FAX: 703-605-6900
(Visa, MasterCard, check, or money order acceptable for payment.)

ASSISTANCE

For **assistance** with general agricultural statistics or further information about NASS or its products or services, contact the **Agricultural Statistics Hotline** at **800-727-9540**, 7:30 a.m. to 4:00 p.m. ET, or e-mail: nass@nass.usda.gov.

The U.S. Department of Agriculture (USDA) prohibits discrimination in all its programs and activities on the basis of race, color, national origin, age, disability, and where applicable, sex, marital status, familial status, parental status, religion, sexual orientation, genetic information, political beliefs, reprisal, or because all or part of an individual's income is derived from any public assistance program. (Not all prohibited bases apply to all programs.) Persons with disabilities who require alternative means for communication of program information (Braille, large print, audiotape, etc.) should contact USDA's TARGET Center at (202) 720-2600 (voice and TDD).

To file a complaint of discrimination, write to USDA, Director, Office of Civil Rights, 1400 Independence Avenue, S.W., Washington, D.C. 20250-9410, or call (800) 795-3272 (voice) or (202) 720-6382 (TDD). USDA is an equal opportunity provider and employer.