



NASS

FACT FINDERS FOR AGRICULTURE
UNITED STATES DEPARTMENT OF AGRICULTURE

Washington, D.C.

Cold Storage

Released December 21, 2005, by the National Agricultural Statistics Service (NASS), Agricultural Statistics Board, U.S. Department of Agriculture. For information on *Cold Storage* call David Colwell at (202) 720-8784, office hours 7:30 a.m. to 4:00 p.m. ET.

Highlights

Frozen food stocks in refrigerated warehouses on November 30, 2005 were greater than year earlier levels for chicken, frozen vegetables and eggs.

Butter stocks were down 37 percent from last month, but up 7 percent from a year ago.

Total red meat supplies in freezers were down 2 percent from last month and down 3 percent from last year. Frozen pork supplies were down 3 percent from last month and down 1 percent from the previous year. Stocks of pork bellies were up 89 percent from last month, but down 16 percent from last year.

Total frozen poultry supplies on November 30, 2005 were down 12 percent from the previous month, but up 1 percent from a year ago. Total stocks of chicken were up 8 percent from the previous month and up 13 percent from last year. Total pounds of turkey in freezers were down 52 percent from last month and down 32 percent from November 30, 2004.

Special Note

Included in this issue are revisions to Frozen Apples for the months of April through December, 2004. Also, revised are Total Frozen Fruit, and Frozen Apples in the East North Central Region for the same time period. This information was first published in the September issue of *Cold Storage*.

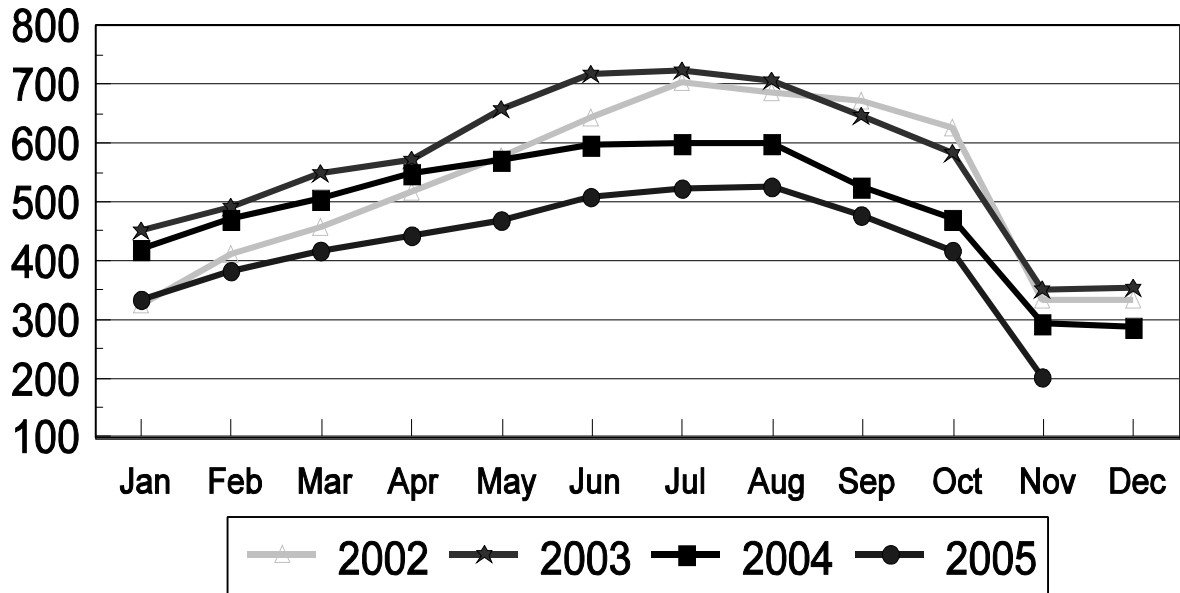
This page is intentionally blank.

Contents

	Page
Frozen Apples: Revisions for April through December, 2004	1
Stocks in Cold Storage: By Commodity, United States, November 2005	2
Stocks in Cold Storage: By Commodity, Region, and United States, October 31, 2005	6
Stocks in Cold Storage: By Commodity, Region, and United States, November 30, 2005	10
Public General Warehouses: Cold Storage Space Occupied by Region and United States, November 2005	14
Apples in Cold Storage: By State and United States, November 2005	15
Survey and Estimating Procedures, Revision Policy and Reliability	16
Access to Reports	17

Total Frozen Turkey-United States Cold Storage Stocks, 2002-2005

Million Pounds



**Stocks in Cold Storage: By Commodity,
United States, 2004-2005**

Year and Month	United States		East North Central Region
	Frozen Apples	Total Frozen Fruit	Frozen Apples
	<i>1,000 Pounds</i>	<i>1,000 Pounds</i>	<i>1,000 Pounds</i>
2004			
January	48,596	895,506	28,024
February	50,778	803,321	28,059
March	55,604	715,709	28,050
*April	76,921	724,805	48,094
*May	73,897	759,481	46,605
*June	66,704	839,835	41,353
*July	58,519	1,070,294	36,449
*August	50,023	1,059,966	32,277
*September	40,485	1,036,710	25,688
*October	50,749	1,210,340	31,432
*November	59,468	1,181,257	37,944
*December	65,909	1,093,884	42,481
2005			
January	73,385	989,394	45,183
February	89,864	879,606	55,430
March	89,064	753,493	54,748
April	93,849	711,997	57,272
May	89,909	687,592	54,494
June	85,145	769,159	50,570
July	76,457	1,055,978	44,270
August	62,272	1,067,640	36,781
September	50,321	996,641	29,899
October	54,953	1,213,294	33,160
November			
December			

* Revised, based on updated plant information.

**Stocks in Cold Storage: By Commodity,
United States, November 2005**

Commodity	Stocks in All Warehouses			Percent of		Public Warehouse Stocks
	Nov 30, 2004	Oct 31, 2005	Nov 30, 2005	Nov 2004	Oct 2005	Nov 30, 2005
	<i>1,000 Pounds</i>	<i>1,000 Pounds</i>	<i>1,000 Pounds</i>	<i>Percent</i>	<i>Percent</i>	<i>1,000 Lbs</i>
Fresh Fruit						
Apples						
Regular Storage	1,183,155	1,563,343	1,028,602	87	66	
Controlled Atmosphere	4,710,686	4,258,308	4,415,177	94	104	
Total	5,893,841	5,821,651	5,443,779	92	94	3,450
Pears						
Bartlett	23,506	56,457	30,139	128	53	
Other Varieties	343,681	462,004	405,683	118	88	
Total	367,187	518,461	435,822	119	84	1,171
Nuts						
Shelled						
Peanuts	249,983	251,291	244,810	98	97	
Pecans	18,515	17,123	12,787	69	75	
Other Shelled	93,319	89,965	86,267	92	96	
Total	361,817	358,379	343,864	95	96	127,053
In-Shell						
Peanuts	15,136	16,679	19,269	127	116	
Pecans	48,476	7,741	20,507	42	265	
Other In-Shell	8,475	8,818	9,295	110	105	
Total	72,087	33,238	49,071	68	148	10,001
Dairy Products						
Butter, Total	57,177	98,112	61,324	107	63	48,712
(Government Owned)	143	40	58	41	145	
Natural Cheese						
American, Total	481,244	536,625	509,246	106	95	
(Government Owned)	4,947	844	801	16	95	
Swiss	25,934	25,853	24,995	96	97	
Other Natural Cheese	197,073	188,452	182,543	93	97	
Total	704,251	750,930	716,784	102	95	380,932
Eggs, Frozen						
Whites	2,955	2,940	2,851	96	97	
Yolks	1,072	1,130	1,274	119	113	
Whole & Mixed	10,174	10,193	10,335	102	101	
Unclassified	3,123	3,356	3,133	100	93	
Total	17,324	17,619	17,593	102	100	17,004
Frozen Poultry						
Chicken						
Broilers, Fryers						
Roasters (Whole)	20,727	23,205	24,506	118	106	
Hens, Mature Chickens	3,696	2,183	1,831	50	84	
Breasts & Breast Meat	149,607	149,593	153,261	102	102	
Drumsticks	16,059	13,016	15,798	98	121	
Leg Quarters	104,300	132,852	145,407	139	109	
Legs	9,186	13,473	20,230	220	150	
Thigh & Thigh Quarters	11,808	9,957	12,670	107	127	
Thigh Meat	14,742	10,429	13,922	94	133	
Wings	38,867	46,419	49,387	127	106	
Paws and Feet	17,853	10,690	15,966	89	149	
Other	382,340	392,375	417,983	109	107	
Total Chicken	769,185	804,192	870,961	113	108	

See footnote(s) at end of table.

--continued

**Stocks in Cold Storage: By Commodity,
United States, November 2005**

Commodity	Stocks in All Warehouses			Percent of		Public Warehouse Stocks
	Nov 30, 2004	Oct 31, 2005	Nov 30, 2005	Nov 2004	Oct 2005	Nov 30, 2005
	<i>1,000 Pounds</i>	<i>1,000 Pounds</i>	<i>1,000 Pounds</i>	<i>Percent</i>	<i>Percent</i>	<i>1,000 Lbs</i>
Turkeys						
Toms (Whole Carcasses)	68,601	132,483	31,016	45	23	
Hens (Whole Carcasses)	48,477	90,484	27,818	57	31	
Whole Turkeys	117,078	222,967	58,834	50	26	
Other Turkey	177,790	194,638	142,067	80	73	
Total Turkey	294,868	417,605	200,901	68	48	146,708
Ducks	582	2,714	2,886	496	106	
Total Poultry	1,064,635	1,224,511	1,074,748	101	88	962,569
Frozen Fruit						
Apples	59,468	54,953	59,760	100	109	
Apricots	7,319	5,744	4,882	67	85	
Blackberries, Total	33,453	31,371	27,512	82	88	
IQF	23,122	20,024	17,563	76	88	
Pails and Tubs	4,153	5,158	4,706	113	91	
Barrels, 400 lbs net	5,619	5,926	4,963	88	84	
Concentrate	559	263	280	50	106	
Blueberries	93,845	97,204	88,657	94	91	
Boysenberries	1,531	3,189	3,193	209	100	
Cherries, Tart (RTP)	81,816	131,846	117,770	144	89	
Cherries, Tart (Juice)	1,223	2,577	2,572	210	100	
Cherries, Sweet	9,075	11,498	10,255	113	89	
Grapes	8,625	8,421	7,410	86	88	
Peaches	77,899	73,327	60,745	78	83	
Raspberries, Black	1,282	1,647	1,173	91	71	
Raspberries, Red, Total	48,632	72,809	67,857	140	93	
IQF	19,245	21,164	18,487	96	87	
Pails and Tubs	11,639	14,453	13,305	114	92	
Barrels, 400 lbs net	16,847	35,097	33,858	201	96	
Concentrate	901	2,095	2,207	245	105	
Strawberries, Total	321,033	279,229	246,524	77	88	
IQF and Poly	160,766	135,678	116,657	73	86	
Pails and Tubs	101,087	89,121	78,708	78	88	
Barrels and Drums	46,414	44,192	41,194	89	93	
Juice Stock	12,766	10,238	9,965	78	97	
Other Frozen Fruit	436,056	439,479	433,568	99	99	
Total	1,181,257	1,213,294	1,131,878	96	93	976,583
Frozen Juice						
Orange Juice Conc. ¹	1,457,953	1,139,934	1,027,492	70	90	
(Gallon Equivalent)	147,328	115,191	103,829			
Other Juice Concentrate	283,628	253,872	274,180	97	108	
Total	1,741,581	1,393,806	1,301,672	75	93	190,267

See footnote(s) at end of table.

--continued

**Stocks in Cold Storage: By Commodity,
United States, November 2005**

Commodity	Stocks in All Warehouses			Percent of		Public Warehouse Stocks
	Nov 30, 2004	Oct 31, 2005	Nov 30, 2005	Nov 2004	Oct 2005	Nov 30, 2005
	<i>1,000 Pounds</i>	<i>1,000 Pounds</i>	<i>1,000 Pounds</i>	<i>Percent</i>	<i>Percent</i>	<i>1,000 Lbs</i>
Frozen Vegetables						
Asparagus	9,562	10,072	9,639	101	96	
Limas, Fordhook	9,701	9,142	8,157	84	89	
Limas, Baby	51,497	50,118	45,880	89	92	
Green Beans, Reg. Cut	195,822	244,160	209,994	107	86	
Green Beans, Fr. Style	26,595	32,844	26,965	101	82	
Broccoli, Spears	31,257	39,762	38,197	122	96	
Broccoli, Chopped & Cut	53,911	62,046	59,735	111	96	
Brussels Sprouts	17,542	11,802	15,982	91	135	
Carrots, Diced	128,713	92,931	139,032	108	150	
Carrots, Other	146,433	150,160	163,061	111	109	
Cauliflower	31,162	33,915	44,080	141	130	
Corn, Cut	576,596	580,345	519,604	90	90	
Corn, Cob	275,419	321,361	295,791	107	92	
Mixed Vegetables	46,466	55,774	54,299	117	97	
Okra	38,327	39,889	34,499	90	86	
Onion Rings	6,651	4,752	3,734	56	79	
Onions, Other	33,138	38,999	40,511	122	104	
Blackeye Peas	3,296	3,143	2,929	89	93	
Green Peas	263,533	295,896	251,381	95	85	
Peas & Carrots Mixed	5,088	5,756	4,745	93	82	
Spinach	38,776	54,077	45,721	118	85	
Squash, Summer/Zucchini	50,078	62,783	62,994	126	100	
Southern Greens	16,125	14,005	11,945	74	85	
Other Vegetables	368,056	393,021	365,285	99	93	
Total	2,423,744	2,606,753	2,454,160	101	94	1,839,185
Potatoes						
French Fries	959,360	962,477	906,102	94	94	
Other Frozen	259,985	237,494	217,051	83	91	
Total	1,219,345	1,199,971	1,123,153	92	94	853,007

See footnote(s) at end of table.

--continued

**Stocks in Cold Storage: By Commodity,
United States, November 2005**

Commodity	Stocks in All Warehouses			Percent of		Public Warehouse Stocks
	Nov 30, 2004	Oct 31, 2005	Nov 30, 2005	Nov 2004	Oct 2005	Nov 30, 2005
	<i>1,000 Pounds</i>	<i>1,000 Pounds</i>	<i>1,000 Pounds</i>	<i>Percent</i>	<i>Percent</i>	<i>1,000 Lbs</i>
Meat						
Frozen Beef						
Boneless ²	409,917	389,827	374,800	91	96	
Beef Cuts ³	53,380	49,359	55,788	105	113	
Total	463,297	439,186	430,588	93	98	427,852
(Government Owned)	6,673	1,937	2,148	32	111	
Frozen Pork						
Picnics, Bone-in	10,531	13,628	11,256	107	83	
Hams, Total	60,887	96,789	56,543	93	58	52,701
Bone-in	36,026	56,032	34,356	95	61	33,405
Boneless ⁴	24,861	40,757	22,187	89	54	19,296
Bellies	33,955	15,211	28,687	84	189	
Loins, Total	44,048	36,752	44,656	101	122	40,709
Bone-in	24,784	21,028	23,817	96	113	
Boneless ⁵	19,264	15,724	20,839	108	133	
Ribs ⁶	83,989	60,973	67,327	80	110	
Butts	11,063	8,051	10,139	92	126	
Trimming ⁷	26,457	31,159	34,975	132	112	
Other ⁸	78,727	87,122	90,358	115	104	
Variety Meats ⁹	38,229	33,791	29,113	76	86	
Unclassified ¹⁰	48,446	63,000	60,524	125	96	
Total	436,332	446,476	433,578	99	97	385,116
(Government Owned)	832	442	639	77	145	
Other						
Veal	3,616	4,144	4,554	126	110	
Lamb & Mutton	3,715	10,137	9,407	253	93	
Total	7,331	14,281	13,961	190	98	13,893
Canned						
Canned Hams	4,360	3,560	2,953	68	83	
Other Canned Meat	1,282	2,425	3,941	307	163	
Total	5,642	5,985	6,894	122	115	6,868
Total	912,602	905,928	885,021	97	98	833,729
Miscellaneous						
Cooler	784,789	961,457	930,952	119	97	374,313
Freezer	1,893,148	2,150,441	2,034,907	107	95	1,983,103
Total	2,677,937	3,111,898	2,965,859	111	95	2,357,416
Commodities						
Stored in Coolers	8,200,087	8,459,072	7,935,484	97	94	1,074,312
Stored in Freezers	10,494,698	10,795,479	10,069,244	96	93	7,697,291
Total	18,694,785	19,254,551	18,004,728	96	94	8,771,603

¹ Adjusted to 42.0 degrees Brix equivalent (9.896 pounds per gallon).

² Includes all boxed boneless beef, such as ground beef, roasts, steaks, loins, strips, rounds, trimmings, etc. Variety meats (edible offal), such as tongues, livers, hearts, kidneys, and other organs removed from slaughtered beef, are included as miscellaneous freezer stocks.

³ Includes all boxed primal beef cuts, bone-in.

⁴ Includes full ham, bone removed and individual muscles separated.

⁵ Includes pork tenderloins.

⁶ Includes spareribs and backribs.

⁷ Includes 42% regular trimmings, 72% special trimmings, boneless picnic meat, jowls, neckbone trimmings, blade, cheek, head, and shank meat, etc. Packaged bacon, sausage, and processed items, such as hot dogs and luncheon meats, are included in miscellaneous cooler or freezer stocks.

⁸ Includes ears, tails, feet, neckbones and snouts.

⁹ Includes tongues, kidneys, livers, stomachs, hearts, chitterlings, salivary glands, and other organs removed from slaughtered hogs.

¹⁰ Includes product unable to be classified elsewhere in this report.

**Stocks in Cold Storage: By Commodity, Region,
and United States, October 31, 2005, Revised**

Commodity	New England	Middle Atlantic	East North Central	West North Central	South Atlantic
	<i>1,000 Pounds</i>	<i>1,000 Pounds</i>	<i>1,000 Pounds</i>	<i>1,000 Pounds</i>	<i>1,000 Pounds</i>
Total Fresh Apples	31,852	539,634	389,717	4,897	245,227
Nuts					
Shelled					
Peanuts		33	15	13	170,825
Pecans ¹	58	83			4,051
In-Shell					
Pecans ¹					378
Dairy Products					
Natural Cheese					
American, Total	24,575	52,597	211,046	111,014	5,660
Other Natural Cheese	34	10,801	106,169	53,017	99
Frozen Poultry					
Chicken					
Broilers, Fryers					
Roasters (Whole)		2,148	261	806	5,278
Hens, Mature Chickens	12	261	205	68	668
Other	682	29,894	17,303	41,197	302,173
Total Chicken	694	32,303	17,769	42,071	308,119
Turkeys					
Whole Turkeys	6,554	24,913	11,735	28,916	54,826
Other Turkey	135	5,062	15,706	49,834	64,863
Total Turkey	6,689	29,975	27,441	78,750	119,689
Ducks		81	2,415	1	49
Total Poultry	7,383	62,359	47,625	120,822	427,857
Frozen Fruit					
Apples	251	13,609	33,160	147	298
Blueberries	9,324	10,048	39,091	3,758	3,374
Cherries, Tart (RTP)	64	6,332	105,240	145	881
Cherries, Sweet		186	7,335	203	1
Peaches	102	2,814	14,431	2,278	673
Raspberries, Red	107	1,470	1,535	529	195
Strawberries, Total	60	5,291	9,458	1,420	2,100
Other Frozen Fruit	1,039	9,135	270,140	7,859	1,905

See footnote(s) at end of table.

--continued

**Stocks in Cold Storage: By Commodity, Region,
and United States, October 31, 2005, Revised, (continued)**

Commodity	East South Central	West South Central	Mountain	Pacific	US Total
	<i>1,000 Pounds</i>	<i>1,000 Pounds</i>	<i>1,000 Pounds</i>	<i>1,000 Pounds</i>	<i>1,000 Pounds</i>
Total Fresh Apples	248	8,820	66,707	4,534,549	5,821,651
Nuts					
Shelled					
Peanuts	22,525	57,687	76	117	251,291
Pecans ¹	211	12,619		101	17,123
In-Shell					
Pecans ¹	81	7,282			7,741
Dairy Products					
Natural Cheese					
American, Total	416	5,372	36,582	89,363	536,625
Other Natural Cheese	2,584	448	854	14,446	188,452
Frozen Poultry					
Chicken					
Broilers, Fryers					
Roasters (Whole)	5,610	6,686	509	1,907	23,205
Hens, Mature Chickens	49	673	35	212	2,183
Other	141,104	209,929	2,590	33,932	778,804
Total Chicken	146,763	217,288	3,134	36,051	804,192
Turkeys					
Whole Turkeys	6,830	46,563	12,695	29,935	222,967
Other Turkey	2,731	20,038	9,923	26,346	194,638
Total Turkey	9,561	66,601	22,618	56,281	417,605
Ducks	9	7	27	125	2,714
Total Poultry	156,333	283,896	25,779	92,457	1,224,511
Frozen Fruit					
Apples	5	879	29	6,575	54,953
Blueberries	158	555	168	30,728	97,204
Cherries, Tart (RTP)		123	15,731	3,330	131,846
Cherries, Sweet	1	101	8	3,663	11,498
Peaches	48	571	71	52,339	73,327
Raspberries, Red	109	399	51	68,414	72,809
Strawberries, Total	835	21,579	117	238,369	279,229
Other Frozen Fruit	171	9,201	2,657	137,372	439,479

See footnote(s) at end of table.

--continued

**Stocks in Cold Storage: By Commodity, Region,
and United States, October 31, 2005, Revised**

Commodity	New England	Middle Atlantic	East North Central	West North Central	South Atlantic
	<i>1,000 Pounds</i>	<i>1,000 Pounds</i>	<i>1,000 Pounds</i>	<i>1,000 Pounds</i>	<i>1,000 Pounds</i>
Frozen Juice					
Orange Juice Conc. ²	13		631	182	1,095,091
Other Juice Concentrate	7,281	31,854	33,656	1,273	84,329
Frozen Vegetables ³					
Asparagus		540	4,814	27	152
Limas, Fordhook		2,613	1,373		693
Limas, Baby		7,842	3,723	2,686	8,315
Green Beans, Reg. Cut		41,284	57,445	9,268	22,661
Green Beans, Fr. Style		7,681	6,623	804	1,239
Broccoli, Spears		6,162	3,545		3,248
Broccoli, Chopped & Cut		6,568	5,478	1,628	4,101
Brussels Sprouts		1,619	1,084	1	436
Carrots, Diced		8,197	16,113	6,646	5,260
Carrots, Other		15,404	27,477	3,935	6,355
Cauliflower		4,429	2,855	253	1,049
Corn, Cut		54,951	92,645	76,560	23,056
Corn, Cob		15,418	41,142	62,479	14,481
Mixed Vegetables		4,481	7,076	2,008	2,292
Okra		1,980	611	6,517	3,490
Onion Rings		262	2,966	467	102
Onions, Other		2,833	3,794	289	2,650
Blackeye Peas		299	50		1,508
Green Peas		40,399	36,907	34,816	13,727
Peas & Carrots Mixed		1,014	975		177
Spinach		9,856	3,979	48	3,107
Squash, Summer/Zucchini		3,276	24,308	618	1,995
Southern Greens		1,395	573	1	2,425
Other Vegetables		42,738	59,064	20,913	23,185
Potatoes					
French Fries	33,335	22,533	62,328	91,388	22,379
Other Frozen	5,402	9,186	31,550	8,072	2,516
Meat					
Frozen Beef					
Boneless ⁴	1,355	49,606	45,354	120,120	24,151
Beef Cuts ⁵	196	1,532	5,731	14,775	4,514
Frozen Pork					
Ribs ⁶	207	403	11,145	30,658	10,894
Trimmings ⁷	31	357	7,321	16,851	2,432
Other ⁸	7,951	536	14,432	43,847	13,575
Other					
Veal		953	855	79	82
Lamb & Mutton		5,803	1,418	14	209

See footnote(s) at end of table.

--continued

**Stocks in Cold Storage: By Commodity, Region,
and United States, October 31, 2005, Revised, (continued)**

Commodity	East South Central	West South Central	Mountain	Pacific	US Total
	<i>1,000 Pounds</i>	<i>1,000 Pounds</i>	<i>1,000 Pounds</i>	<i>1,000 Pounds</i>	<i>1,000 Pounds</i>
Frozen Juice					
Orange Juice Concentrate	21	3,251	1,090	39,655	1,139,934
Other Juice Concentrate	66	16,026	1,759	77,628	253,872
Frozen Vegetables ³					
Asparagus		239	76	4,224	10,072
Limas, Fordhook		95		4,368	9,142
Limas, Baby		906	568	26,078	50,118
Green Beans, Reg. Cut		1,083	127	112,292	244,160
Green Beans, Fr. Style		168	110	16,219	32,844
Broccoli, Spears		13,450	1	13,356	39,762
Broccoli, Chopped & Cut		16,883	465	26,923	62,046
Brussels Sprouts		719		7,943	11,802
Carrots, Diced		1,699	30	54,986	92,931
Carrots, Other		12,821	140	84,028	150,160
Cauliflower		3,919	101	21,309	33,915
Corn, Cut		1,785	7,975	323,373	580,345
Corn, Cob		1,344	7,719	178,778	321,361
Mixed Vegetables		9,073	1,806	29,038	55,774
Okra		26,521		770	39,889
Onion Rings		313	483	159	4,752
Onions, Other		2,159	13,874	13,400	38,999
Blackeye Peas		933	6	347	3,143
Green Peas		3,014	6,043	160,990	295,896
Peas & Carrots Mixed		991	32	2,567	5,756
Spinach		8,309	54	28,724	54,077
Squash, Summer/Zucchini		4,688	273	27,625	62,783
Southern Greens		8,331		1,280	14,005
Other Vegetables		32,482	6,140	208,499	393,021
Potatoes					
French Fries	7,933	17,190	193,703	511,688	962,477
Other Frozen	2,527	20,899	55,257	102,085	237,494
Meat					
Frozen Beef					
Boneless ⁴	5,524	81,071	8,984	53,662	389,827
Beef Cuts ⁵	1,913	7,334	9,368	3,996	49,359
Frozen Pork					
Ribs ⁶	2,088	3,722	136	1,720	60,973
Trimblings ⁷	779	2,081	16	1,291	31,159
Other ⁸	3,061	1,903	282	1,535	87,122
Other					
Veal	7	298		1,870	4,144
Lamb & Mutton		290	91	2,312	10,137

¹ East North Central combined with South Atlantic. Mountain and West North Central combined with West South Central.

² Middle Atlantic combined with South Atlantic.

³ New England combined with Middle Atlantic. East South Central combined with South Atlantic.

⁴ Includes all boxed boneless beef, such as ground beef, roasts, steaks, loins, strips, rounds, trimmings, etc. Variety meats (edible offal), such as tongues, livers, hearts, kidneys, and other organs removed from slaughtered beef, are included as miscellaneous freezer stocks.

⁵ Includes all boxed primal beef cuts, bone-in.

⁶ Includes spareribs and backribs.

⁷ Includes 42% regular trimmings, 72% special trimmings, boneless picnic meat, jowls, neckbone trimmings, blade, cheek, head, and shank meat, etc. Packaged bacon, sausage, and processed items, such as hot dogs and luncheon meats, are included in miscellaneous cooler or freezer stocks.

⁸ Includes ears, tails, feet, neckbones and snouts.

**Stocks in Cold Storage: By Commodity, Region,
and United States, November 30, 2005**

Commodity	New England	Middle Atlantic	East North Central	West North Central	South Atlantic
	<i>1,000 Pounds</i>	<i>1,000 Pounds</i>	<i>1,000 Pounds</i>	<i>1,000 Pounds</i>	<i>1,000 Pounds</i>
Total Fresh Apples	24,002	549,949	349,350	1,898	237,325
Nuts					
Shelled					
Peanuts			416	14	161,155
Pecans ¹	57	73			3,119
In-Shell					
Pecans ¹					5,841
Dairy Products					
Natural Cheese					
American, Total	22,887	46,588	202,542	105,846	4,221
Other Natural Cheese	36	10,070	103,507	51,316	99
Frozen Poultry					
Chicken					
Broilers, Fryers					
Roasters (Whole)		2,284	269	734	5,559
Hens, Mature Chickens	12	243	155	76	553
Other	1,835	31,652	19,895	48,508	334,918
Total Chicken	1,847	34,179	20,319	49,318	341,030
Turkeys					
Whole Turkeys	132	5,859	814	9,100	19,537
Other Turkey	546	3,326	14,059	40,001	46,554
Total Turkey	678	9,185	14,873	49,101	66,091
Ducks		70	2,597	4	39
Total Poultry	2,525	43,434	37,789	98,423	407,160
Frozen Fruit					
Apples	137	14,820	36,546	152	394
Blueberries	8,234	9,219	37,510	3,334	3,337
Cherries, Tart (RTP)	43	5,600	97,378	112	783
Cherries, Sweet		142	6,697	159	1
Peaches	91	2,719	11,428	1,791	535
Raspberries, Red	95	1,199	1,339	334	181
Strawberries, Total	58	5,451	9,086	1,055	1,777
Other Frozen Fruit	2,581	8,788	256,271	7,530	1,883

See footnote(s) at end of table.

--continued

**Stocks in Cold Storage: By Commodity, Region,
and United States, November 30, 2005 (continued)**

Commodity	East South Central	West South Central	Mountain	Pacific	US Total
	<i>1,000 Pounds</i>	<i>1,000 Pounds</i>	<i>1,000 Pounds</i>	<i>1,000 Pounds</i>	<i>1,000 Pounds</i>
Total Fresh Apples	176	8,820	48,172	4,224,087	5,443,779
Nuts					
Shelled					
Peanuts	22,925	60,081	97	122	244,810
Pecans ¹	228	9,244		66	12,787
In-Shell					
Pecans ¹	2,017	12,649			20,507
Dairy Products					
Natural Cheese					
American, Total	299	3,184	37,126	86,553	509,246
Other Natural Cheese	2,584	328	903	13,700	182,543
Frozen Poultry					
Chicken					
Broilers, Fryers					
Roasters (Whole)	5,817	7,179	528	2,136	24,506
Hens, Mature Chickens	16	541	23	212	1,831
Other	145,039	221,427	2,805	38,545	844,624
Total Chicken	150,872	229,147	3,356	40,893	870,961
Turkeys					
Whole Turkeys	1,365	14,055	3,740	4,232	58,834
Other Turkey	878	12,701	7,808	16,194	142,067
Total Turkey	2,243	26,756	11,548	20,426	200,901
Ducks	9	2	23	142	2,886
Total Poultry	153,124	255,905	14,927	61,461	1,074,748
Frozen Fruit					
Apples	3	732	28	6,948	59,760
Blueberries	137	495	159	26,232	88,657
Cherries, Tart (RTP)		114	10,806	2,934	117,770
Cherries, Sweet	1	100	7	3,148	10,255
Peaches	40	568	49	43,524	60,745
Raspberries, Red	101	364	48	64,196	67,857
Strawberries, Total	731	18,774	137	209,455	246,524
Other Frozen Fruit	166	9,906	2,478	143,965	433,568

See footnote(s) at end of table.

--continued

**Stocks in Cold Storage: By Commodity, Region,
and United States, November 30, 2005**

Commodity	New England	Middle Atlantic	East North Central	West North Central	South Atlantic
	<i>1,000 Pounds</i>	<i>1,000 Pounds</i>	<i>1,000 Pounds</i>	<i>1,000 Pounds</i>	<i>1,000 Pounds</i>
Frozen Juice					
Orange Juice Conc. ²	12		727	243	986,302
Other Juice Concentrate	16,924	36,104	36,043	1,269	88,146
Frozen Vegetables ³					
Asparagus		452	4,183	27	141
Limas, Fordhook		2,296	1,404		552
Limas, Baby		7,802	2,940	2,491	7,352
Green Beans, Reg. Cut		37,612	49,436	8,166	19,930
Green Beans, Fr. Style		6,530	5,891	709	1,105
Broccoli, Spears		6,855	5,192		2,671
Broccoli, Chopped & Cut		6,889	5,787	1,553	3,386
Brussels Sprouts		1,658	1,294	1	422
Carrots, Diced		17,054	33,799	9,541	7,659
Carrots, Other		20,365	31,616	4,161	6,562
Cauliflower		4,703	2,878	325	1,150
Corn, Cut		50,574	82,274	68,478	19,952
Corn, Cob		12,542	38,520	58,382	12,387
Mixed Vegetables		4,456	7,115	1,968	1,695
Okra		1,747	527	6,517	2,417
Onion Rings		210	2,271	514	133
Onions, Other		3,272	3,686	359	2,662
Blackeye Peas		284	107		1,440
Green Peas		34,309	32,650	30,077	11,842
Peas & Carrots Mixed		902	1,015		95
Spinach		8,280	3,336	60	2,190
Squash, Summer/Zucchini		3,999	25,328	802	1,490
Southern Greens		1,224	471	1	124
Other Vegetables		40,907	54,272	20,070	17,205
Potatoes					
French Fries	31,340	19,230	60,966	96,244	19,103
Other Frozen	5,162	10,019	31,257	8,086	1,984
Meat					
Frozen Beef					
Boneless ⁴	1,334	41,515	40,460	115,061	29,901
Beef Cuts ⁵	221	1,576	8,188	15,534	5,541
Frozen Pork					
Ribs ⁶	230	606	11,250	37,248	10,165
Trimmings ⁷	31	407	7,641	20,011	2,421
Other ⁸	7,932	481	15,269	47,136	12,707
Other					
Veal		1,331	717	78	51
Lamb & Mutton		5,450	1,279	36	121

See footnote(s) at end of table.

--continued

**Stocks in Cold Storage: By Commodity, Region,
and United States, November 30, 2005 (continued)**

Commodity	East South Central	West South Central	Mountain	Pacific	US Total
	<i>1,000 Pounds</i>	<i>1,000 Pounds</i>	<i>1,000 Pounds</i>	<i>1,000 Pounds</i>	<i>1,000 Pounds</i>
Frozen Juice					
Orange Juice Concentrate	19	2,757	991	36,441	1,027,492
Other Juice Concentrate	70	16,476	1,671	77,477	274,180
Frozen Vegetables ³					
Asparagus		188	75	4,573	9,639
Limas, Fordhook		114		3,791	8,157
Limas, Baby		685	573	24,037	45,880
Green Beans, Reg. Cut		1,261	154	93,435	209,994
Green Beans, Fr. Style		83	97	12,550	26,965
Broccoli, Spears		14,150	1	9,328	38,197
Broccoli, Chopped & Cut		15,558	507	26,055	59,735
Brussels Sprouts		493		12,114	15,982
Carrots, Diced		1,195	84	69,700	139,032
Carrots, Other		11,629	142	88,586	163,061
Cauliflower		6,963	88	27,973	44,080
Corn, Cut		1,300	7,999	289,027	519,604
Corn, Cob		1,201	5,572	167,187	295,791
Mixed Vegetables		9,818	1,777	27,470	54,299
Okra		22,523		768	34,499
Onion Rings		252	183	171	3,734
Onions, Other		1,525	13,924	15,083	40,511
Blackeye Peas		799	6	293	2,929
Green Peas		2,555	5,636	134,312	251,381
Peas & Carrots Mixed		127	53	2,553	4,745
Spinach		7,346	60	24,449	45,721
Squash, Summer/Zucchini		3,595	1,456	26,324	62,994
Southern Greens		8,399		1,726	11,945
Other Vegetables		30,667	5,829	196,335	365,285
Potatoes					
French Fries	8,415	16,009	182,937	471,858	906,102
Other Frozen	2,361	21,803	45,354	91,025	217,051
Meat					
Frozen Beef					
Boneless ⁴	5,439	79,813	9,137	52,140	374,800
Beef Cuts ⁵	1,881	8,047	9,687	5,113	55,788
Frozen Pork					
Ribs ⁶	2,205	4,466	235	922	67,327
Trimming ⁷	400	2,695	12	1,357	34,975
Other ⁸	2,776	2,185	277	1,595	90,358
Other					
Veal	8	539		1,830	4,554
Lamb & Mutton		293	79	2,149	9,407

¹ East North Central combined with South Atlantic. Mountain and West North Central Combined with West South Central.

² Middle Atlantic combined with South Atlantic.

³ New England combined with Middle Atlantic. East South Central combined with South Atlantic.

⁴ Includes all boxed boneless beef, such as ground beef, roasts, steaks, loins, strips, rounds, trimmings, etc. Variety meats (edible offal), such as tongues, livers, hearts, kidneys, and other organs removed from slaughtered beef, are included as miscellaneous freezer stocks.

⁵ Includes all boxed primal beef cuts, bone-in.

⁶ Includes spareribs and backribs.

⁷ Includes 42% regular trimmings, 72% special trimmings, boneless picnic meat, jowls, neckbone trimmings, blade, cheek, head, and shank meat, etc. Packaged bacon, sausage, and processed items, such as hot dogs and luncheon meats, are included in miscellaneous cooler or freezer stocks.

⁸ Includes ears, tails, feet, neckbones and snouts.

**Public General Warehouses: Cold Storage Space Occupied
by Region and United States, November 2005**

Region	Cooler				Freezer			
	Usable Space	Usable Space Occupied			Usable Space	Usable Space Occupied		
		Nov 30 2005	Nov 30 2004	Oct 31 2005		Nov 30 2005	Nov 30 2004	Oct 31 2005
	<i>1,000 Cu Ft</i>	<i>Percent</i>	<i>Percent</i>	<i>Percent</i>	<i>1,000 Cu Ft</i>	<i>Percent</i>	<i>Percent</i>	<i>Percent</i>
New England	1,800	80	89	87	16,926	80	82	80
Middle Atlantic	50,734	60	64	63	143,309	64	75	72
E. North Central	73,835	57	57	58	265,821	56	60	57
W. North Central	46,556	53	53	52	155,916	64	73	71
South Atlantic	55,158	47	40	42	196,686	56	65	62
E. South Central	9,582	55	73	72	70,445	45	61	62
W. South Central	29,100	24	31	30	140,041	50	54	52
Mountain	12,227	50	58	60	61,505	69	75	72
Pacific	50,822	45	54	52	320,818	70	75	72
US	329,814	50	53	52	1,371,467	61	68	65

Cold Storage Regions



**Apples in Cold Storage: By State
and United States, November 2005**

State	All Warehouses		
	Nov 30 2004	Oct 31 2005	Nov 30 2005
	<i>1,000 Pounds</i>	<i>1,000 Pounds</i>	
CA	69,777	78,275	68,986
MI	308,922	351,515	322,792
N ENG	36,637	31,852	24,002
NY	318,276	279,846	277,998
OH	18,290	25,430	18,065
OR	49,494	56,274	32,255
PA	260,000	259,434	271,614
VA	156,059	129,118	131,226
WA	4,467,288	4,400,000	4,122,846
WV	82,792	58,140	68,571
Other States	126,306	151,767	105,424
US	5,893,841	5,821,651	5,443,779

Survey Procedures: Questionnaires are mailed about the 24th of each month to all operators on the list of approximately 1,400 public and private cold storage warehouses. In addition, apple data are obtained from special surveys and other sources (State Departments of Agriculture, U.S. Apple Association, etc.). All survey data represent stocks as of the end of the month.

Data are collected from warehouses artificially cooled to a temperature of 50 degrees Fahrenheit or lower, and whose food products are normally stored for 30 days or more. All food items in these facilities are reported regardless of the number of days stored at the time of the report. Also included are specialized storage facilities meeting the 30 day requirement, such as fruit houses, dairy manufacturing plants, frozen fruit, fruit juice, and vegetable processors, and poultry and meat packing plants. Excluded are stocks in space maintained by wholesalers, jobbers, distributors, chain stores, locker plants containing individual lockers, meat packer branch houses, and frozen food processors whose entire inventories are turned over more than once a month.

Estimating Procedures: Data for reporting firms are added to estimates for non-reporting firms to obtain regional and National totals. Estimates for non-reporting firms are obtained by multiplying the previous month's figure by a percent change from the previous month. The percent change is calculated for each item from totals of the current and previous month summed from firms that reported both months.

Revision Policy: Data are revised the following month based on late reports or corrected data. Final figures are published in the annual summary in February of the following year.

Reliability: Reports are received from 900 firms each month which represent about 70 percent of the total capacity. Firms that are not on the list or firms who have never reported are not represented in the data. Monthly data can vary due to different firms reporting month to month. Survey data are also subject to non-sampling errors such as omissions and mistakes in reporting and in processing the data. While these errors cannot be measured directly, they are minimized by carefully reviewing all reported data for consistency and reasonableness.

ACCESS TO REPORTS!!

For your convenience, there are several ways to obtain NASS reports, data products, and services:

INTERNET ACCESS

All NASS reports are available free of charge on the worldwide Internet. For access, connect to the Internet and go to the NASS Home Page at: www.usda.gov/nass/. Select "Today's Reports" or Publications and then Reports Calendar or Publications and then Search, by Title or Subject.

E-MAIL SUBSCRIPTION

All NASS reports are available by subscription free of charge direct to your e-mail address. Starting with the NASS Home Page at www.usda.gov/nass/, click on **Publications**, then click on the **Subscribe by E-mail** button which takes you to the page describing e-mail delivery of reports. Finally, click on **Go to the Subscription Page** and follow the instructions.

PRINTED REPORTS OR DATA PRODUCTS

CALL OUR TOLL-FREE ORDER DESK: 800-999-6779 (U.S. and Canada)
Other areas, please call 703-605-6220 FAX: 703-605-6900
(Visa, MasterCard, check, or money order acceptable for payment.)

ASSISTANCE

For **assistance** with general agricultural statistics or further information about NASS or its products or services, contact the **Agricultural Statistics Hotline** at **800-727-9540**, 7:30 a.m. to 4:00 p.m. ET, or e-mail: nass@nass.usda.gov.

The U.S. Department of Agriculture (USDA) prohibits discrimination in all its programs and activities on the basis of race, color, national origin, age, disability, and where applicable, sex, marital status, familial status, parental status, religion, sexual orientation, genetic information, political beliefs, reprisal, or because all or part of an individual's income is derived from any public assistance program. (Not all prohibited bases apply to all programs.) Persons with disabilities who require alternative means for communication of program information (Braille, large print, audiotape, etc.) should contact USDA's TARGET Center at (202) 720-2600 (voice and TDD).

To file a complaint of discrimination, write to USDA, Director, Office of Civil Rights, 1400 Independence Avenue, S.W., Washington, D.C. 20250-9410, or call (800) 795-3272 (voice) or (202) 720-6382 (TDD). USDA is an equal opportunity provider and employer.