



NASS

FACT FINDERS FOR AGRICULTURE
UNITED STATES DEPARTMENT OF AGRICULTURE

Washington, D.C.

Cold Storage

Released January 23, 2006, by the National Agricultural Statistics Service (NASS), Agricultural Statistics Board, U.S. Department of Agriculture. For information on *Cold Storage* call David Colwell at (202) 720-8784, office hours 7:30 a.m. to 4:00 p.m. ET.

Highlights

Frozen food stocks in refrigerated warehouses on December 31, 2005 were greater than year earlier levels for cheese, chicken, frozen vegetables and eggs.

Butter stocks were down 6 percent from last month, but up 27 percent from a year ago.

Total red meat supplies in freezers were slightly below last month and down 10 percent from last year. Frozen pork supplies were down 2 percent from last month and down 11 percent from the previous year. Stocks of pork bellies were up 67 percent from last month, but down 15 percent from last year.

Total frozen poultry supplies on December 31, 2005 were up 5 percent from the previous month and up 12 percent from a year ago. Total stocks of chicken were up 5 percent from the previous month and up 28 percent from last year. Total pounds of turkey in freezers were up 4 percent from last month, but down 30 percent from December 31, 2004.

Special Note

Included in this issue are revisions to Frozen Apples for the months of April through December, 2004. Also, revised are Total Frozen Fruit, and Frozen Apples in the East North Central Region for the same time period. This information was first published in the September issue of *Cold Storage*.

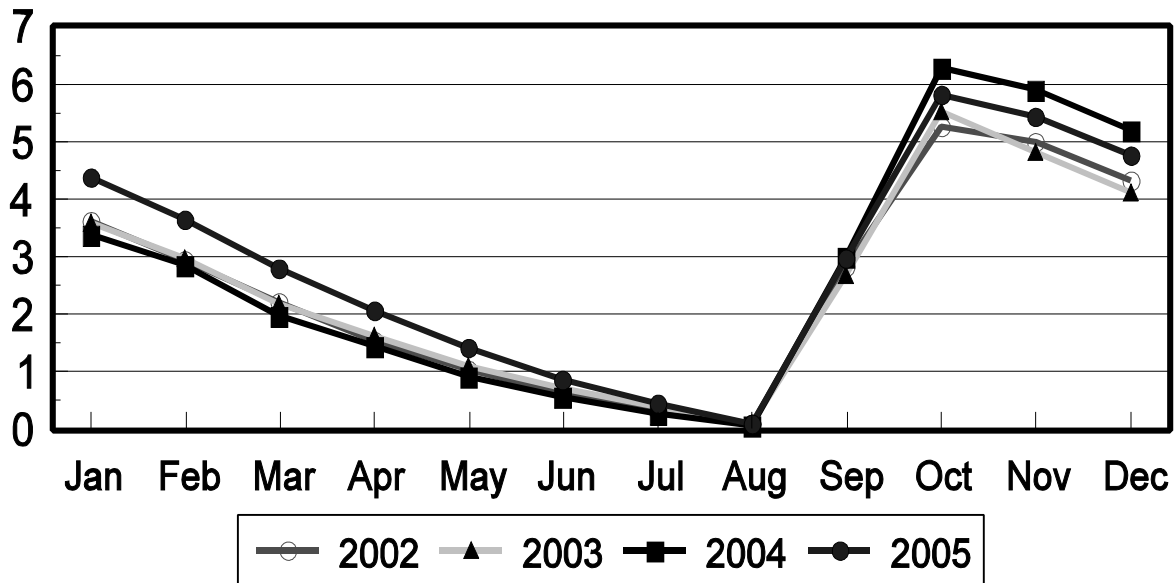
This page is intentionally blank.

Contents

	Page
Frozen Apples: Revisions for April through December, 2004	1
Stocks in Cold Storage: By Commodity, United States, December 2005	2
Stocks in Cold Storage: By Commodity, Region, and United States, November 30, 2005	6
Stocks in Cold Storage: By Commodity, Region, and United States, December 31, 2005	10
Public General Warehouses: Cold Storage Space Occupied by Region and United States, December 2005	14
Apples in Cold Storage: By State and United States, December 2005	15
Survey and Estimating Procedures, Revision Policy and Reliability	16
Access to Reports	17

Fresh Apples-United States Cold Storage Stocks, 2002- 2005

Billion Pounds



**Stocks in Cold Storage: By Commodity,
United States, 2004-2005**

Year and Month	United States		East North Central Region
	Frozen Apples	Total Frozen Fruit	Frozen Apples
	<i>1,000 Pounds</i>	<i>1,000 Pounds</i>	<i>1,000 Pounds</i>
2004			
January	48,596	895,506	28,024
February	50,778	803,321	28,059
March	55,604	715,709	28,050
*April	76,921	724,805	48,094
*May	73,897	759,481	46,605
*June	66,704	839,835	41,353
*July	58,519	1,070,294	36,449
*August	50,023	1,059,966	32,277
*September	40,485	1,036,710	25,688
*October	50,749	1,210,340	31,432
*November	59,468	1,181,257	37,944
*December	65,909	1,093,884	42,481
2005			
January	73,385	989,394	45,183
February	89,864	879,606	55,430
March	89,064	753,493	54,748
April	93,849	711,997	57,272
May	89,909	687,592	54,494
June	85,145	769,159	50,570
July	76,457	1,055,978	44,270
August	62,272	1,067,640	36,781
September	50,321	996,641	29,899
October	54,953	1,213,294	33,160
November	59,732	1,132,593	36,546
December			

* Revised, based on updated plant information.

**Stocks in Cold Storage: By Commodity,
United States, December 2005**

Commodity	Stocks in All Warehouses			Percent of		Public Warehouse Stocks
	Dec 31, 2004	Nov 30, 2005	Dec 31, 2005	Dec 2004	Nov 2005	Dec 31, 2005
	<i>1,000 Pounds</i>	<i>1,000 Pounds</i>	<i>1,000 Pounds</i>	<i>Percent</i>	<i>Percent</i>	<i>1,000 Lbs</i>
Fresh Fruit						
Apples						
Regular Storage	858,184	1,028,602	676,133	79	66	
Controlled Atmosphere	4,328,804	4,415,177	4,074,440	94	92	
Total	5,186,988	5,443,779	4,750,573	92	87	2,385
Pears						
Bartlett	6,574	30,138	12,611	192	42	
Other Varieties	276,382	405,683	317,512	115	78	
Total	282,956	435,821	330,123	117	76	990
Nuts						
Shelled						
Peanuts	300,480	236,963	265,615	88	112	
Pecans	16,971	13,303	17,253	102	130	
Other Shelled	102,498	84,684	88,935	87	105	
Total	419,949	334,950	371,803	89	111	147,276
In-Shell						
Peanuts	15,700	19,294	17,772	113	92	
Pecans	95,581	21,066	83,376	87	396	
Other In-Shell	8,524	9,038	8,183	96	91	
Total	119,805	49,398	109,331	91	221	19,694
Dairy Products						
Butter, Total	44,988	60,430	57,060	127	94	45,577
(Government Owned)	118	58	116	98	200	
Natural Cheese						
American, Total	481,077	512,944	517,514	108	101	
(Government Owned)	5,053	710	207	4	29	
Swiss	25,956	23,646	26,590	102	112	
Other Natural Cheese	198,757	180,190	186,900	94	104	
Total	705,790	716,780	731,004	104	102	387,527
Eggs, Frozen						
Whites	2,972	2,833	2,690	91	95	
Yolks	1,085	1,310	1,336	123	102	
Whole & Mixed	11,443	10,325	13,423	117	130	
Unclassified	3,612	3,133	3,570	99	114	
Total	19,112	17,601	21,019	110	119	20,286
Frozen Poultry						
Chicken						
Broilers, Fryers						
Roasters (Whole)	23,308	24,435	21,536	92	88	
Hens, Mature Chickens	2,924	1,720	1,415	48	82	
Breasts & Breast Meat	151,876	150,298	168,862	111	112	
Drumsticks	16,497	17,911	18,290	111	102	
Leg Quarters	76,091	156,766	176,048	231	112	
Legs	9,965	20,199	25,263	254	125	
Thigh & Thigh Quarters	11,733	12,614	11,936	102	95	
Thigh Meat	14,382	14,050	12,679	88	90	
Wings	32,429	49,009	40,698	125	83	
Paws and Feet	11,464	15,849	13,033	114	82	
Other	365,511	413,836	430,128	118	104	
Total Chicken	716,180	876,687	919,888	128	105	

See footnote(s) at end of table.

--continued

**Stocks in Cold Storage: By Commodity,
United States, December 2005**

Commodity	Stocks in All Warehouses			Percent of		Public Warehouse Stocks
	Dec 31, 2004	Nov 30, 2005	Dec 31, 2005	Dec 2004	Nov 2005	Dec 31, 2005
	<i>1,000 Pounds</i>	<i>1,000 Pounds</i>	<i>1,000 Pounds</i>	<i>Percent</i>	<i>Percent</i>	<i>1,000 Lbs</i>
Turkeys						
Toms (Whole Carcasses)	62,988	31,055	24,497	39	79	
Hens (Whole Carcasses)	43,083	25,742	25,697	60	100	
Whole Turkeys	106,071	56,797	50,194	47	88	
Other Turkey	182,286	138,380	152,262	84	110	
Total Turkey	288,357	195,177	202,456	70	104	140,016
Ducks	663	2,880	2,600	392	90	
Total Poultry	1,005,200	1,074,744	1,124,944	112	105	1,011,409
Frozen Fruit						
Apples	65,909	59,732	69,761	106	117	
Apricots	6,645	5,027	4,282	64	85	
Blackberries, Total	29,634	27,872	25,756	87	92	
IQF	20,834	17,857	16,592	80	93	
Pails and Tubs	3,760	4,706	4,097	109	87	
Barrels, 400 lbs net	4,391	5,029	4,800	109	95	
Concentrate	649	280	267	41	95	
Blueberries	85,109	88,004	76,441	90	87	
Boysenberries	1,276	3,319	3,235	254	97	
Cherries, Tart (RTP)	76,570	117,838	111,304	145	94	
Cherries, Tart (Juice)	1,259	2,564	2,010	160	78	
Cherries, Sweet	8,237	10,298	9,489	115	92	
Grapes	7,293	7,417	6,336	87	85	
Peaches	69,665	61,958	61,885	89	100	
Raspberries, Black	983	1,173	782	80	67	
Raspberries, Red, Total	42,252	66,007	62,192	147	94	
IQF	17,000	18,645	17,636	104	95	
Pails and Tubs	9,767	12,896	12,376	127	96	
Barrels, 400 lbs net	14,791	32,258	29,671	201	92	
Concentrate	694	2,208	2,509	362	114	
Strawberries, Total	293,560	245,558	214,499	73	87	
IQF and Poly	144,204	116,219	105,006	73	90	
Pails and Tubs	95,193	78,276	67,020	70	86	
Barrels and Drums	43,029	41,103	33,655	78	82	
Juice Stock	11,134	9,960	8,818	79	89	
Other Frozen Fruit	405,492	435,826	417,762	103	96	
Total	1,093,884	1,132,593	1,065,734	97	94	918,319
Frozen Juice						
Orange Juice Conc. ¹	1,468,844	1,027,571	1,044,765	71	102	
(Gallon Equivalent)	148,428	103,837	105,574			
Other Juice Concentrate	292,595	272,830	294,123	101	108	
Total	1,761,439	1,300,401	1,338,888	76	103	189,364

See footnote(s) at end of table.

--continued

**Stocks in Cold Storage: By Commodity,
United States, December 2005**

Commodity	Stocks in All Warehouses			Percent of		Public Warehouse Stocks
	Dec 31, 2004	Nov 30, 2005	Dec 31, 2005	Dec 2004	Nov 2005	Dec 31, 2005
	<i>1,000 Pounds</i>	<i>1,000 Pounds</i>	<i>1,000 Pounds</i>	<i>Percent</i>	<i>Percent</i>	<i>1,000 Lbs</i>
Frozen Vegetables						
Asparagus	9,280	9,641	9,263	100	96	
Limas, Fordhook	8,450	8,161	7,690	91	94	
Limas, Baby	48,955	45,906	41,111	84	90	
Green Beans, Reg. Cut	151,229	209,607	170,561	113	81	
Green Beans, Fr. Style	22,925	26,965	23,162	101	86	
Broccoli, Spears	35,882	38,217	35,519	99	93	
Broccoli, Chopped & Cut	57,607	58,769	62,386	108	106	
Brussels Sprouts	23,519	15,982	21,713	92	136	
Carrots, Diced	117,745	138,989	129,430	110	93	
Carrots, Other	140,440	162,935	149,346	106	92	
Cauliflower	37,123	44,012	43,602	117	99	
Corn, Cut	502,025	519,752	465,169	93	89	
Corn, Cob	242,271	295,810	259,327	107	88	
Mixed Vegetables	46,892	54,298	55,473	118	102	
Okra	33,875	34,506	31,212	92	90	
Onion Rings	6,587	3,734	4,758	72	127	
Onions, Other	33,278	41,987	43,546	131	104	
Blackeye Peas	2,693	2,954	2,340	87	79	
Green Peas	230,326	251,402	213,947	93	85	
Peas & Carrots Mixed	5,641	4,761	5,387	95	113	
Spinach	34,724	45,804	41,768	120	91	
Squash, Summer/Zucchini	45,724	63,006	58,560	128	93	
Southern Greens	17,328	12,706	13,630	79	107	
Other Vegetables	363,579	371,190	349,167	96	94	
Total	2,218,098	2,461,094	2,238,067	101	91	1,646,363
Potatoes						
French Fries	838,438	905,250	845,916	101	93	
Other Frozen	236,381	217,215	200,862	85	92	
Total	1,074,819	1,122,465	1,046,778	97	93	805,588

See footnote(s) at end of table.

--continued

**Stocks in Cold Storage: By Commodity,
United States, December 2005**

Commodity	Stocks in All Warehouses			Percent of		Public Warehouse Stocks
	Dec 31, 2004	Nov 30, 2005	Dec 31, 2005	Dec 2004	Nov 2005	Dec 31, 2005
	<i>1,000 Pounds</i>	<i>1,000 Pounds</i>	<i>1,000 Pounds</i>	<i>Percent</i>	<i>Percent</i>	<i>1,000 Lbs</i>
Meat						
Frozen Beef						
Boneless ²	425,231	374,460	379,522	89	101	
Beef Cuts ³	59,045	55,364	54,246	92	98	
Total	484,276	429,824	433,768	90	101	431,522
(Government Owned)	6,323	2,155	7,568	120	351	
Frozen Pork						
Picnics, Bone-in	9,812	11,510	9,637	98	84	
Hams, Total	44,073	57,498	29,795	68	52	28,657
Bone-in	20,222	34,743	16,667	82	48	16,433
Boneless ⁴	23,851	22,755	13,128	55	58	12,224
Bellies	56,026	28,613	47,852	85	167	
Loins, Total	49,709	44,693	51,058	103	114	46,361
Bone-in	27,455	23,780	27,098	99	114	
Boneless ⁵	22,254	20,913	23,960	108	115	
Ribs ⁶	97,444	68,879	64,577	66	94	
Butts	13,780	10,971	12,692	92	116	
Trimming ⁷	34,543	35,049	38,721	112	110	
Other ⁸	85,310	90,184	89,513	105	99	
Variety Meats ⁹	46,478	29,443	25,084	54	85	
Unclassified ¹⁰	45,677	60,621	58,780	129	97	
Total	482,852	437,461	427,709	89	98	379,987
(Government Owned)	581	642	679	117	106	
Other						
Veal	3,542	4,544	5,064	143	111	
Lamb & Mutton	3,497	9,332	9,984	286	107	
Total	7,039	13,876	15,048	214	108	15,002
Canned						
Canned Hams	3,184	3,093	2,701	85	87	
Other Canned Meat	1,686	3,941	4,580	272	116	
Total	4,870	7,034	7,281	150	104	7,257
Total	979,037	888,195	883,806	90	100	833,768
Miscellaneous						
Cooler	710,734	934,209	837,677	118	90	329,590
Freezer	1,899,446	2,056,141	1,969,005	104	96	1,922,407
Total	2,610,180	2,990,350	2,806,682	108	94	2,251,997
Commodities						
Stored in Coolers	7,442,017	7,930,810	7,146,299	96	90	1,076,578
Stored in Freezers	10,080,228	10,097,791	9,729,513	97	96	7,385,824
Total	17,522,245	18,028,601	16,875,812	96	94	8,462,402

¹ Adjusted to 42.0 degrees Brix equivalent (9.896 pounds per gallon).

² Includes all boxed boneless beef, such as ground beef, roasts, steaks, loins, strips, rounds, trimmings, etc. Variety meats (edible offal), such as tongues, livers, hearts, kidneys, and other organs removed from slaughtered beef, are included as miscellaneous freezer stocks.

³ Includes all boxed primal beef cuts, bone-in.

⁴ Includes full ham, bone removed and individual muscles separated.

⁵ Includes pork tenderloins.

⁶ Includes spareribs and backribs.

⁷ Includes 42% regular trimmings, 72% special trimmings, boneless picnic meat, jowls, neckbone trimmings, blade, cheek, head, and shank meat, etc. Packaged bacon, sausage, and processed items, such as hot dogs and luncheon meats, are included in miscellaneous cooler or freezer stocks.

⁸ Includes ears, tails, feet, neckbones and snouts.

⁹ Includes tongues, kidneys, livers, stomachs, hearts, chitterlings, salivary glands, and other organs removed from slaughtered hogs.

¹⁰ Includes product unable to be classified elsewhere in this report.

**Stocks in Cold Storage: By Commodity, Region,
and United States, November 30, 2005, Revised**

Commodity	New England	Middle Atlantic	East North Central	West North Central	South Atlantic
	<i>1,000 Pounds</i>	<i>1,000 Pounds</i>	<i>1,000 Pounds</i>	<i>1,000 Pounds</i>	<i>1,000 Pounds</i>
Total Fresh Apples	24,002	549,949	349,350	1,898	237,325
Nuts					
Shelled					
Peanuts			415	13	154,190
Pecans ¹	57	73			3,753
In-Shell					
Pecans ¹					5,930
Dairy Products					
Natural Cheese					
American, Total	22,887	48,015	202,954	106,134	4,221
Other Natural Cheese	36	9,160	102,988	51,451	99
Frozen Poultry					
Chicken					
Broilers, Fryers					
Roasters (Whole)		2,265	273	734	5,558
Hens, Mature Chickens	12	180	155	76	569
Other	1,835	31,627	19,895	48,676	343,344
Total Chicken	1,847	34,072	20,323	49,486	349,471
Turkeys					
Whole Turkeys	132	5,891	814	7,808	19,589
Other Turkey	546	3,402	13,270	36,984	46,613
Total Turkey	678	9,293	14,084	44,792	66,202
Ducks		70	2,597	4	39
Total Poultry	2,525	43,435	37,004	94,282	415,712
Frozen Fruit					
Apples	137	14,793	36,546	156	394
Blueberries	8,234	9,117	37,499	3,617	3,337
Cherries, Tart (RTP)	43	5,636	97,377	108	783
Cherries, Sweet		142	6,697	202	1
Peaches	91	2,710	11,428	2,921	570
Raspberries, Red	95	1,200	1,339	334	181
Strawberries, Total	58	5,456	9,045	1,055	1,777
Other Frozen Fruit	2,581	8,883	256,261	7,570	1,883

See footnote(s) at end of table.

--continued

**Stocks in Cold Storage: By Commodity, Region,
and United States, November 30, 2005, Revised, (continued)**

Commodity	East South Central	West South Central	Mountain	Pacific	US Total
	<i>1,000 Pounds</i>	<i>1,000 Pounds</i>	<i>1,000 Pounds</i>	<i>1,000 Pounds</i>	<i>1,000 Pounds</i>
Total Fresh Apples	176	8,820	48,172	4,224,087	5,443,779
Nuts					
Shelled					
Peanuts	22,925	59,217	94	109	236,963
Pecans ¹	234	9,116		70	13,303
In-Shell					
Pecans ¹	2,017	13,119			21,066
Dairy Products					
Natural Cheese					
American, Total	301	3,184	37,938	87,310	512,944
Other Natural Cheese	2,559	407	833	12,657	180,190
Frozen Poultry					
Chicken					
Broilers, Fryers					
Roasters (Whole)	5,783	7,179	528	2,115	24,435
Hens, Mature Chickens	26	541	23	138	1,720
Other	140,489	221,427	2,764	40,475	850,532
Total Chicken	146,298	229,147	3,315	42,728	876,687
Turkeys					
Whole Turkeys	1,523	14,055	3,305	3,680	56,797
Other Turkey	883	12,701	7,805	16,176	138,380
Total Turkey	2,406	26,756	11,110	19,856	195,177
Ducks	9	2	23	136	2,880
Total Poultry	148,713	255,905	14,448	62,720	1,074,744
Frozen Fruit					
Apples	3	732	28	6,943	59,732
Blueberries	137	495	159	25,409	88,004
Cherries, Tart (RTP)		114	10,805	2,972	117,838
Cherries, Sweet	1	100	7	3,148	10,298
Peaches	40	568	49	43,581	61,958
Raspberries, Red	101	364	48	62,345	66,007
Strawberries, Total	731	18,774	137	208,525	245,558
Other Frozen Fruit	166	9,906	2,478	146,098	435,826

See footnote(s) at end of table.

--continued

**Stocks in Cold Storage: By Commodity, Region,
and United States, November 30, 2005, Revised**

Commodity	New England	Middle Atlantic	East North Central	West North Central	South Atlantic
	<i>1,000 Pounds</i>	<i>1,000 Pounds</i>	<i>1,000 Pounds</i>	<i>1,000 Pounds</i>	<i>1,000 Pounds</i>
Frozen Juice					
Orange Juice Conc. ²	12		724	249	986,377
Other Juice Concentrate	16,924	36,021	36,064	1,247	88,146
Frozen Vegetables ³					
Asparagus		452	4,183	27	141
Limas, Fordhook		2,296	1,404		556
Limas, Baby		7,802	2,940	2,491	7,381
Green Beans, Reg. Cut		37,603	49,436	8,196	19,930
Green Beans, Fr. Style		6,530	5,891	709	1,105
Broccoli, Spears		6,855	5,192		2,691
Broccoli, Chopped & Cut		6,889	5,787	1,579	3,442
Brussels Sprouts		1,658	1,294	1	422
Carrots, Diced		17,054	33,799	9,536	7,629
Carrots, Other		20,365	31,616	4,119	6,465
Cauliflower		4,703	2,878	325	1,080
Corn, Cut		50,574	82,274	68,479	20,035
Corn, Cob		12,542	38,520	58,382	12,406
Mixed Vegetables		4,456	7,115	1,968	1,695
Okra		1,747	527	6,517	2,424
Onion Rings		210	2,271	514	133
Onions, Other		3,272	3,686	347	2,700
Blackeye Peas		284	107		1,471
Green Peas		34,310	32,650	30,077	11,870
Peas & Carrots Mixed		902	1,015		96
Spinach		8,280	3,336	90	2,223
Squash, Summer/Zucchini		3,999	25,328	802	1,502
Southern Greens		1,224	471	1	885
Other Vegetables		40,910	49,703	20,047	17,667
Potatoes					
French Fries	31,340	19,230	60,966	96,093	19,231
Other Frozen	5,162	10,133	31,257	8,088	2,141
Meat					
Frozen Beef					
Boneless ⁴	1,334	41,170	38,622	115,190	29,902
Beef Cuts ⁵	221	1,575	7,920	15,687	5,541
Frozen Pork					
Ribs ⁶	230	606	12,519	37,248	10,196
Trimmings ⁷	31	398	7,648	20,011	2,421
Other ⁸	7,932	481	15,282	47,136	12,673
Other					
Veal		1,331	717	78	51
Lamb & Mutton		5,461	1,279	36	121

See footnote(s) at end of table.

--continued

**Stocks in Cold Storage: By Commodity, Region,
and United States, November 30, 2005, Revised, (continued)**

Commodity	East South Central	West South Central	Mountain	Pacific	US Total
	<i>1,000 Pounds</i>	<i>1,000 Pounds</i>	<i>1,000 Pounds</i>	<i>1,000 Pounds</i>	<i>1,000 Pounds</i>
Frozen Juice					
Orange Juice Concentrate	19	2,757	991	36,442	1,027,571
Other Juice Concentrate	70	16,476	1,674	76,208	272,830
Frozen Vegetables ³					
Asparagus		188	77	4,573	9,641
Limas, Fordhook		114		3,791	8,161
Limas, Baby		685	570	24,037	45,906
Green Beans, Reg. Cut		1,261	157	93,024	209,607
Green Beans, Fr. Style		83	97	12,550	26,965
Broccoli, Spears		14,150	1	9,328	38,217
Broccoli, Chopped & Cut		15,558	515	24,999	58,769
Brussels Sprouts		493		12,114	15,982
Carrots, Diced		1,195	81	69,695	138,989
Carrots, Other		11,629	155	88,586	162,935
Cauliflower		6,963	90	27,973	44,012
Corn, Cut		1,300	7,992	289,098	519,752
Corn, Cob		1,201	5,572	167,187	295,810
Mixed Vegetables		9,818	1,773	27,473	54,298
Okra		22,523		768	34,506
Onion Rings		252	183	171	3,734
Onions, Other		1,525	13,924	16,533	41,987
Blackeye Peas		799		293	2,954
Green Peas		2,555	5,632	134,308	251,402
Peas & Carrots Mixed		127	68	2,553	4,761
Spinach		7,346	60	24,469	45,804
Squash, Summer/Zucchini		3,595	1,456	26,324	63,006
Southern Greens		8,399		1,726	12,706
Other Vegetables		30,667	5,829	206,367	371,190
Potatoes					
French Fries	8,509	16,009	183,082	470,790	905,250
Other Frozen	2,393	21,803	45,175	91,063	217,215
Meat					
Frozen Beef					
Boneless ⁴	5,507	79,813	9,137	53,785	374,460
Beef Cuts ⁵	1,697	8,047	9,687	4,989	55,364
Frozen Pork					
Ribs ⁶	2,205	4,466	169	1,240	68,879
Trimblings ⁷	445	2,695	12	1,388	35,049
Other ⁸	2,776	2,185	277	1,442	90,184
Other					
Veal		539		1,828	4,544
Lamb & Mutton		293	79	2,063	9,332

¹ East North Central combined with South Atlantic. Mountain and West North Central combined with West South Central.

² Middle Atlantic combined with South Atlantic.

³ New England combined with Middle Atlantic. East South Central combined with South Atlantic.

⁴ Includes all boxed boneless beef, such as ground beef, roasts, steaks, loins, strips, rounds, trimmings, etc. Variety meats (edible offal), such as tongues, livers, hearts, kidneys, and other organs removed from slaughtered beef, are included as miscellaneous freezer stocks.

⁵ Includes all boxed primal beef cuts, bone-in.

⁶ Includes spareribs and backribs.

⁷ Includes 42% regular trimmings, 72% special trimmings, boneless picnic meat, jowls, neckbone trimmings, blade, cheek, head, and shank meat, etc. Packaged bacon, sausage, and processed items, such as hot dogs and luncheon meats, are included in miscellaneous cooler or freezer stocks.

⁸ Includes ears, tails, feet, neckbones and snouts.

**Stocks in Cold Storage: By Commodity, Region,
and United States, December 31, 2005**

Commodity	New England	Middle Atlantic	East North Central	West North Central	South Atlantic
	<i>1,000 Pounds</i>	<i>1,000 Pounds</i>	<i>1,000 Pounds</i>	<i>1,000 Pounds</i>	<i>1,000 Pounds</i>
Total Fresh Apples	13,761	496,778	280,108	927	204,162
Nuts					
Shelled					
Peanuts			1,617	15	180,972
Pecans ¹	106	63			4,683
In-Shell					
Pecans ¹					14,048
Dairy Products					
Natural Cheese					
American, Total	23,104	47,085	202,130	115,543	3,795
Other Natural Cheese	35	8,939	112,850	49,030	109
Frozen Poultry					
Chicken					
Broilers, Fryers					
Roasters (Whole)		1,750	228	825	6,051
Hens, Mature Chickens	10	141	120	101	410
Other	1,999	33,112	23,243	49,197	365,923
Total Chicken	2,009	35,003	23,591	50,123	372,384
Turkeys					
Whole Turkeys	152	2,629	317	8,397	13,265
Other Turkey	637	2,439	14,048	40,061	56,742
Total Turkey	789	5,068	14,365	48,458	70,007
Ducks		51	2,372	2	14
Total Poultry	2,798	40,122	40,328	98,583	442,405
Frozen Fruit					
Apples	153	17,245	42,502	111	402
Blueberries	7,576	8,039	33,313	3,600	1,977
Cherries, Tart (RTP)	40	4,888	92,220	131	735
Cherries, Sweet		195	6,003	265	1
Peaches	90	2,525	10,645	4,533	569
Raspberries, Red	92	1,247	1,519	171	84
Strawberries, Total	53	5,366	9,200	869	373
Other Frozen Fruit	2,507	8,934	239,684	7,023	1,793

See footnote(s) at end of table.

--continued

**Stocks in Cold Storage: By Commodity, Region,
and United States, December 31, 2005 (continued)**

Commodity	East South Central	West South Central	Mountain	Pacific	US Total
	<i>1,000 Pounds</i>	<i>1,000 Pounds</i>	<i>1,000 Pounds</i>	<i>1,000 Pounds</i>	<i>1,000 Pounds</i>
Total Fresh Apples	116	8,820	33,132	3,712,769	4,750,573
Nuts					
Shelled					
Peanuts	30,071	52,730	84	126	265,615
Pecans ¹	856	11,454		91	17,253
In-Shell					
Pecans ¹	3,409	65,919			83,376
Dairy Products					
Natural Cheese					
American, Total	354	1,671	35,491	88,341	517,514
Other Natural Cheese	2,507	344	745	12,341	186,900
Frozen Poultry					
Chicken					
Broilers, Fryers					
Roasters (Whole)	4,450	5,951	495	1,786	21,536
Hens, Mature Chickens	13	456	12	152	1,415
Other	146,370	231,144	2,595	43,354	896,937
Total Chicken	150,833	237,551	3,102	45,292	919,888
Turkeys					
Whole Turkeys	1,286	18,528	2,264	3,356	50,194
Other Turkey	554	12,739	8,836	16,206	152,262
Total Turkey	1,840	31,267	11,100	19,562	202,456
Ducks	8	2	18	133	2,600
Total Poultry	152,681	268,820	14,220	64,987	1,124,944
Frozen Fruit					
Apples	548	813	59	7,928	69,761
Blueberries	120	542	146	21,128	76,441
Cherries, Tart (RTP)		106	10,695	2,489	111,304
Cherries, Sweet	1	103	7	2,914	9,489
Peaches	40	526	70	42,887	61,885
Raspberries, Red	95	307	44	58,633	62,192
Strawberries, Total	644	17,395	117	180,482	214,499
Other Frozen Fruit	157	16,174	2,889	138,601	417,762

See footnote(s) at end of table.

--continued

**Stocks in Cold Storage: By Commodity, Region,
and United States, December 31, 2005**

Commodity	New England	Middle Atlantic	East North Central	West North Central	South Atlantic
	<i>1,000 Pounds</i>	<i>1,000 Pounds</i>	<i>1,000 Pounds</i>	<i>1,000 Pounds</i>	<i>1,000 Pounds</i>
Frozen Juice					
Orange Juice Conc. ²	12		655	87	1,003,770
Other Juice Concentrate	17,677	38,031	38,107	1,094	98,336
Frozen Vegetables ³					
Asparagus		488	3,526	23	143
Limas, Fordhook		2,490	1,469		559
Limas, Baby		7,949	3,254	2,311	5,605
Green Beans, Reg. Cut		32,103	43,382	7,537	2,020
Green Beans, Fr. Style		5,779	5,003	650	204
Broccoli, Spears		5,953	5,405		2,169
Broccoli, Chopped & Cut		7,912	5,337	1,527	3,293
Brussels Sprouts		3,131	1,797	1	575
Carrots, Diced		15,700	36,055	9,121	1,637
Carrots, Other		18,787	29,261	3,881	2,575
Cauliflower		5,195	3,699	320	867
Corn, Cut		45,227	78,098	63,293	3,565
Corn, Cob		11,663	35,255	51,842	5,865
Mixed Vegetables		4,902	7,872	2,097	1,603
Okra		1,654	566	6,517	2,002
Onion Rings		178	2,703	752	104
Onions, Other		3,106	3,732	320	3,222
Blackeye Peas		272	70		1,318
Green Peas		29,041	28,446	25,717	7,901
Peas & Carrots Mixed		979	812		99
Spinach		8,009	3,283	80	1,945
Squash, Summer/Zucchini		5,198	24,002	221	719
Southern Greens		1,245	317	1	955
Other Vegetables		41,542	46,014	18,684	17,348
Potatoes					
French Fries	30,914	21,209	56,851	110,425	17,995
Other Frozen	4,298	9,180	28,411	8,285	2,093
Meat					
Frozen Beef					
Boneless ⁴	1,310	46,766	48,498	103,486	37,503
Beef Cuts ⁵	261	1,400	5,479	17,212	4,609
Frozen Pork					
Ribs ⁶	255	571	15,689	30,455	9,580
Trimmings ⁷	34	364	7,648	23,432	2,467
Other ⁸	7,922	518	19,318	45,586	10,108
Other					
Veal		1,150	1,305	101	60
Lamb & Mutton		5,533	1,363	26	567

See footnote(s) at end of table.

--continued

**Stocks in Cold Storage: By Commodity, Region,
and United States, December 31, 2005 (continued)**

Commodity	East South Central	West South Central	Mountain	Pacific	US Total
	<i>1,000 Pounds</i>	<i>1,000 Pounds</i>	<i>1,000 Pounds</i>	<i>1,000 Pounds</i>	<i>1,000 Pounds</i>
Frozen Juice					
Orange Juice Concentrate	19	2,687	986	36,549	1,044,765
Other Juice Concentrate	80	18,319	1,745	80,734	294,123
Frozen Vegetables ³					
Asparagus		272	74	4,737	9,263
Limas, Fordhook		181		2,991	7,690
Limas, Baby		452	403	21,137	41,111
Green Beans, Reg. Cut		1,139	148	84,232	170,561
Green Beans, Fr. Style		171	90	11,265	23,162
Broccoli, Spears		13,400	1	8,591	35,519
Broccoli, Chopped & Cut		18,093	513	25,711	62,386
Brussels Sprouts		377		15,832	21,713
Carrots, Diced		1,102	44	65,771	129,430
Carrots, Other		10,293	190	84,359	149,346
Cauliflower		9,355	107	24,059	43,602
Corn, Cut		1,402	7,472	266,112	465,169
Corn, Cob		1,296	2,577	150,829	259,327
Mixed Vegetables		11,296	1,169	26,534	55,473
Okra		19,747		726	31,212
Onion Rings		335	461	225	4,758
Onions, Other		1,471	15,992	15,703	43,546
Blackeye Peas		483		197	2,340
Green Peas		2,366	5,028	115,448	213,947
Peas & Carrots Mixed		127	75	3,295	5,387
Spinach		7,977	73	20,401	41,768
Squash, Summer/Zucchini		3,784	362	24,274	58,560
Southern Greens		9,160		1,952	13,630
Other Vegetables		29,531	12,106	183,942	349,167
Potatoes					
French Fries	6,379	13,744	168,648	419,751	845,916
Other Frozen	2,183	17,523	47,729	81,160	200,862
Meat					
Frozen Beef					
Boneless ⁴	5,609	75,851	8,821	51,678	379,522
Beef Cuts ⁵	1,787	8,570	9,652	5,276	54,246
Frozen Pork					
Ribs ⁶	2,501	4,164	187	1,175	64,577
Trimblings ⁷	517	3,027	9	1,223	38,721
Other ⁸	2,524	2,093	267	1,177	89,513
Other					
Veal		435		2,013	5,064
Lamb & Mutton		256	56	2,183	9,984

¹ East North Central combined with South Atlantic. Mountain and West North Central Combined with West South Central.

² Middle Atlantic combined with South Atlantic.

³ New England combined with Middle Atlantic. East South Central combined with South Atlantic.

⁴ Includes all boxed boneless beef, such as ground beef, roasts, steaks, loins, strips, rounds, trimmings, etc. Variety meats (edible offal), such as tongues, livers, hearts, kidneys, and other organs removed from slaughtered beef, are included as miscellaneous freezer stocks.

⁵ Includes all boxed primal beef cuts, bone-in.

⁶ Includes spareribs and backribs.

⁷ Includes 42% regular trimmings, 72% special trimmings, boneless picnic meat, jowls, neckbone trimmings, blade, cheek, head, and shank meat, etc. Packaged bacon, sausage, and processed items, such as hot dogs and luncheon meats, are included in miscellaneous cooler or freezer stocks.

⁸ Includes ears, tails, feet, neckbones and snouts.

**Public General Warehouses: Cold Storage Space Occupied
by Region and United States, December 2005**

Region	Cooler				Freezer			
	Usable Space	Usable Space Occupied			Usable Space	Usable Space Occupied		
	Dec 31 2005	Dec 31 2004	Nov 30 2005	Dec 31 2005	Dec 31 2005	Dec 31 2004	Nov 30 2005	Dec 31 2005
	<i>1,000 Cu Ft</i>	<i>Percent</i>	<i>Percent</i>	<i>Percent</i>	<i>1,000 Cu Ft</i>	<i>Percent</i>	<i>Percent</i>	<i>Percent</i>
New England	1,800	83	87	89	16,926	79	80	84
Middle Atlantic	50,732	62	63	64	143,308	64	72	72
E. North Central	74,221	58	58	61	266,133	56	57	55
W. North Central	46,604	50	52	54	156,003	65	71	73
South Atlantic	55,647	47	42	47	198,978	56	62	67
E. South Central	9,573	60	72	73	70,446	46	62	60
W. South Central	29,073	25	30	35	140,041	48	52	53
Mountain	12,194	53	60	62	61,505	66	72	71
Pacific	50,821	48	52	53	320,775	71	72	70
US	330,665	51	52	55	1,374,115	61	65	65

Cold Storage Regions



**Apples in Cold Storage: By State
and United States, December 2005**

State	All Warehouses		
	Dec 31 2004	Nov 30 2005	Dec 31 2005
	<i>1,000 Pounds</i>	<i>1,000 Pounds</i>	
CA	62,409	68,986	50,340
MI	268,632	322,792	261,930
N ENG	30,410	24,002	13,761
NY	282,828	277,998	245,070
OH	10,465	18,065	13,330
OR	36,238	32,255	25,607
PA	231,000	271,614	251,580
VA	134,422	131,226	112,465
WA	3,960,600	4,122,846	3,636,822
WV	72,120	68,571	66,453
Other States	97,864	105,424	73,215
US	5,186,988	5,443,779	4,750,573

Survey Procedures: Questionnaires are mailed about the 24th of each month to all operators on the list of approximately 1,400 public and private cold storage warehouses. In addition, apple data are obtained from special surveys and other sources (State Departments of Agriculture, U.S. Apple Association, etc.). All survey data represent stocks as of the end of the month.

Data are collected from warehouses artificially cooled to a temperature of 50 degrees Fahrenheit or lower, and whose food products are normally stored for 30 days or more. All food items in these facilities are reported regardless of the number of days stored at the time of the report. Also included are specialized storage facilities meeting the 30 day requirement, such as fruit houses, dairy manufacturing plants, frozen fruit, fruit juice, and vegetable processors, and poultry and meat packing plants. Excluded are stocks in space maintained by wholesalers, jobbers, distributors, chain stores, locker plants containing individual lockers, meat packer branch houses, and frozen food processors whose entire inventories are turned over more than once a month.

Estimating Procedures: Data for reporting firms are added to estimates for non-reporting firms to obtain regional and National totals. Estimates for non-reporting firms are obtained by multiplying the previous month's figure by a percent change from the previous month. The percent change is calculated for each item from totals of the current and previous month summed from firms that reported both months.

Revision Policy: Data are revised the following month based on late reports or corrected data. Final figures are published in the annual summary in February of the following year.

Reliability: Reports are received from 900 firms each month which represent about 70 percent of the total capacity. Firms that are not on the list or firms who have never reported are not represented in the data. Monthly data can vary due to different firms reporting month to month. Survey data are also subject to non-sampling errors such as omissions and mistakes in reporting and in processing the data. While these errors cannot be measured directly, they are minimized by carefully reviewing all reported data for consistency and reasonableness.

ACCESS TO REPORTS!!

For your convenience, there are several ways to obtain NASS reports, data products, and services:

INTERNET ACCESS

All NASS reports are available free of charge on the worldwide Internet. For access, connect to the Internet and go to the NASS Home Page at: www.nass.usda.gov.

E-MAIL SUBSCRIPTION

All NASS reports are available by subscription free of charge direct to your e-mail address. Starting with the NASS Home Page at www.nass.usda.gov, under the right navigation, *Receive reports by Email*, click on **National** or **State**. Follow the instructions on the screen.

PRINTED REPORTS OR DATA PRODUCTS

CALL OUR TOLL-FREE ORDER DESK: 800-999-6779 (U.S. and Canada)
Other areas, please call 703-605-6220 FAX: 703-605-6900
(Visa, MasterCard, check, or money order acceptable for payment.)

ASSISTANCE

For **assistance** with general agricultural statistics or further information about NASS or its products or services, contact the **Agricultural Statistics Hotline** at **800-727-9540**, 7:30 a.m. to 4:00 p.m. ET, or e-mail: nass@nass.usda.gov.

The U.S. Department of Agriculture (USDA) prohibits discrimination in all its programs and activities on the basis of race, color, national origin, age, disability, and where applicable, sex, marital status, familial status, parental status, religion, sexual orientation, genetic information, political beliefs, reprisal, or because all or part of an individual's income is derived from any public assistance program. (Not all prohibited bases apply to all programs.) Persons with disabilities who require alternative means for communication of program information (Braille, large print, audiotape, etc.) should contact USDA's TARGET Center at (202) 720-2600 (voice and TDD).

To file a complaint of discrimination, write to USDA, Director, Office of Civil Rights, 1400 Independence Avenue, S.W., Washington, D.C. 20250-9410, or call (800) 795-3272 (voice) or (202) 720-6382 (TDD). USDA is an equal opportunity provider and employer.