



NASS

FACT FINDERS FOR AGRICULTURE
UNITED STATES DEPARTMENT OF AGRICULTURE

Washington, D.C.

Cold Storage

Released June 22, 2006, by the National Agricultural Statistics Service (NASS), Agricultural Statistics Board, U.S. Department of Agriculture. For information on *Cold Storage* call David Colwell at (202) 720-8784, office hours 7:30 a.m. to 4:00 p.m. ET.

Highlights

Frozen food stocks in refrigerated warehouses on May 31, 2006 were greater than year earlier levels for beef, eggs, chicken, butter, and cheese.

Butter stocks were up 15 percent from last month and up 29 percent from a year ago.

Total red meat supplies in freezers were down 4 percent from last month, but up 9 percent from last year. Frozen pork supplies were down 9 percent from last month and down 8 percent from the previous year. Stocks of pork bellies were down 7 percent from last month and down 21 percent from last year.

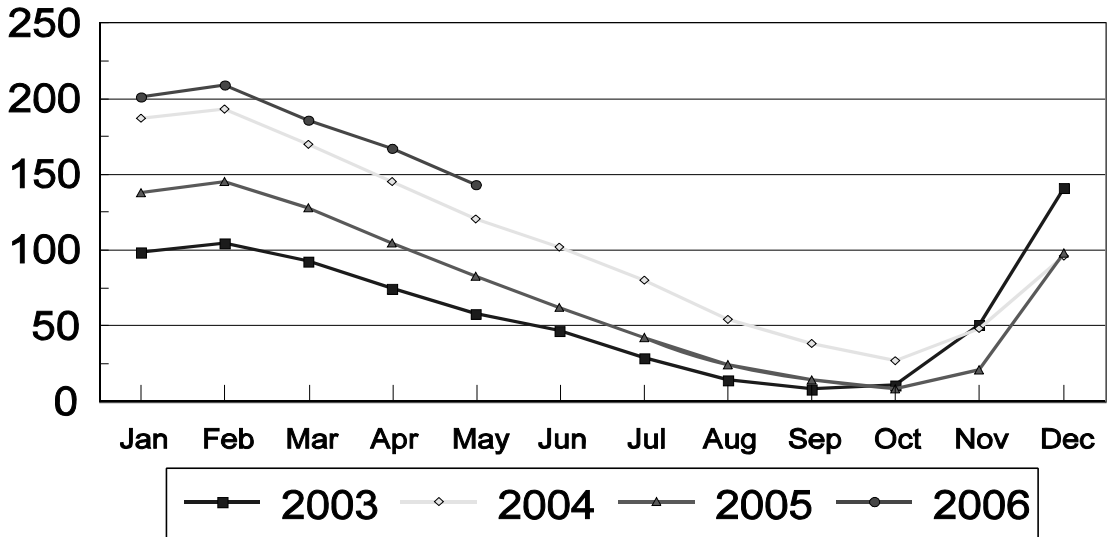
Total frozen poultry supplies on May 31, 2006 were down 2 percent from the previous month, but up 10 percent from a year ago. Total stocks of chicken were down 8 percent from the previous month, but up 17 percent from last year. Total pounds of turkey in freezers were up 10 percent from last month and up slightly from May 31, 2005.

Contents

	Page
Stocks in Cold Storage By Commodity	
United States, May 2006	1
Region, and United States, April 30, 2006	5
Region, and United States, May 31, 2006	9
Reliability Statement	14
Information Contacts	14

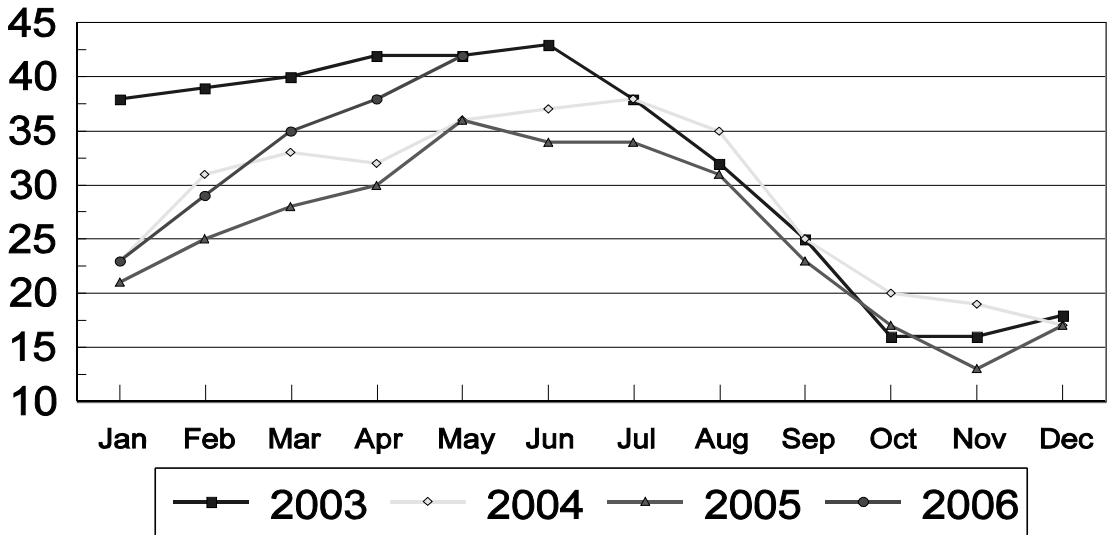
In-Shell Pecans Cold Storage Stocks, 2003-2006

Million Pounds



Shelled Pecans Cold Storage Stocks, 2003-2006

Million Pounds



**Stocks in Cold Storage: By Commodity,
United States, May 2006**

Commodity	Stocks in All Warehouses			Percent of		Public Warehouse Stocks
	May 31, 2005	Apr 30, 2006	May 31, 2006	May 2005	Apr 2006	May 31, 2006
	<i>1,000 Pounds</i>	<i>1,000 Pounds</i>	<i>1,000 Pounds</i>	<i>Percent</i>	<i>Percent</i>	<i>1,000 Lbs</i>
Fresh Fruit						
Apples						
Regular Storage	34,507	107,210	63,647	184	59	
Controlled Atmosphere	1,388,216	1,638,330	1,069,899	77	65	
Total	1,422,723	1,745,540	1,133,546	80	65	
Pears						
Bartlett	168	975				
Other Varieties	35,605	91,889	41,343	116	45	
Total	35,773	92,864	41,343	116	45	2,320
Nuts						
Shelled						
Peanuts	454,718	372,893	346,821	76	93	
Pecans	35,909	37,545	41,729	116	111	
Other Shelled	124,672	109,744	121,763	98	111	
Total	615,299	520,182	510,313	83	98	179,259
In-Shell						
Peanuts	48,551	17,288	17,954	37	104	
Pecans	82,509	167,319	143,330	174	86	
Other In-Shell	5,676	7,675	7,829	138	102	
Total	136,736	192,282	169,113	124	88	52,683
Dairy Products						
Butter, Total	178,045	200,179	229,826	129	115	168,347
(Government Owned)	224	106	165	74	156	
Natural Cheese						
American, Total	582,686	574,420	580,668	100	101	
(Government Owned)	1,134	235	42	4	18	
Swiss	23,540	32,628	32,997	140	101	
Other Natural Cheese	209,409	212,967	222,097	106	104	
Total	815,635	820,015	835,762	102	102	447,538
Eggs, Frozen						
Whites	2,840	3,225	2,476	87	77	
Yolks	601	1,429	1,299	216	91	
Whole & Mixed	11,523	15,221	13,725	119	90	
Unclassified	2,703	3,384	3,595	133	106	
Total	17,667	23,259	21,095	119	91	24,878
Frozen Poultry						
Chicken						
Broilers, Fryers						
Roasters (Whole)	27,960	27,974	25,214	90	90	
Hens, Mature Chickens	1,968	6,974	6,361	323	91	
Breasts & Breast Meat	145,135	133,942	127,125	88	95	
Drumsticks	9,838	14,726	17,109	174	116	
Leg Quarters	55,923	111,311	85,770	153	77	
Legs	12,248	12,486	10,507	86	84	
Thigh & Thigh Quarters	12,937	12,931	17,470	135	135	
Thigh Meat	12,818	15,355	15,968	125	104	
Wings	42,035	39,628	39,685	94	100	
Paws and Feet	10,182	16,437	14,263	140	87	
Other	333,962	449,231	415,355	124	92	
Total Chicken	665,006	840,995	774,827	117	92	

See footnote(s) at end of table.

--continued

**Stocks in Cold Storage: By Commodity,
United States, May 2006**

Commodity	Stocks in All Warehouses			Percent of		Public Warehouse Stocks
	May 31, 2005	Apr 30, 2006	May 31, 2006	May 2005	Apr 2006	May 31, 2006
	<i>1,000 Pounds</i>	<i>1,000 Pounds</i>	<i>1,000 Pounds</i>	<i>Percent</i>	<i>Percent</i>	<i>1,000 Lbs</i>
Turkeys						
Toms (Whole Carcasses)	145,263	96,172	119,864	83	125	
Hens (Whole Carcasses)	97,828	85,682	97,963	100	114	
Whole Turkeys	243,091	181,854	217,827	90	120	
Other Turkey	222,829	241,878	248,163	111	103	
Total Turkey	465,920	423,732	465,990	100	110	346,913
Ducks	2,277	8,002	7,929	348	99	
Total Poultry	1,133,203	1,272,729	1,248,746	110	98	1,079,355
Frozen Fruit						
Apples	89,904	77,899	82,625	92	106	
Apricots	3,620	1,652	1,616	45	98	
Blackberries, Total	10,824	18,023	15,850	146	88	
IQF	7,376	12,833	11,242	152	88	
Pails and Tubs	1,926	2,057	1,776	92	86	
Barrels, 400 lbs net	1,311	2,974	2,808	214	94	
Concentrate	211	159	24	11	15	
Blueberries	34,673	36,613	29,002	84	79	
Boysenberries	1,027	1,839	1,919	187	104	
Cherries, Tart (RTP)	39,172	71,560	61,361	157	86	
Cherries, Tart (Juice)	906	1,757	1,387	153	79	
Cherries, Sweet	6,707	5,988	4,663	70	78	
Grapes	2,451	4,319	3,200	131	74	
Peaches	24,672	32,246	29,913	121	93	
Raspberries, Black	243	621	479	197	77	
Raspberries, Red, Total	21,716	34,752	30,589	141	88	
IQF	11,432	13,915	14,552	127	105	
Pails and Tubs	4,935	5,994	5,323	108	89	
Barrels, 400 lbs net	4,573	13,281	9,481	207	71	
Concentrate	776	1,562	1,233	159	79	
Strawberries, Total	237,150	148,933	232,014	98	156	
IQF and Poly	119,175	69,671	94,521	79	136	
Pails and Tubs	69,317	39,281	74,787	108	190	
Barrels and Drums	33,530	16,442	35,663	106	217	
Juice Stock	15,128	23,539	27,043	179	115	
Other Frozen Fruit	211,448	274,713	249,374	118	91	
Total	684,513	710,915	743,992	109	105	636,465
Frozen Juice						
Orange Juice Conc. ¹	1,668,135	1,087,543	1,157,743	69	106	
(Gallon Equivalent)	168,567	109,897	116,991			
Other Juice Concentrate	299,968	323,291	304,104	101	94	
Total	1,968,103	1,410,834	1,461,847	74	104	215,495

See footnote(s) at end of table.

--continued

**Stocks in Cold Storage: By Commodity,
United States, May 2006**

Commodity	Stocks in All Warehouses			Percent of		Public Warehouse Stocks
	May 31, 2005	Apr 30, 2006	May 31, 2006	May 2005	Apr 2006	May 31, 2006
	<i>1,000 Pounds</i>	<i>1,000 Pounds</i>	<i>1,000 Pounds</i>	<i>Percent</i>	<i>Percent</i>	<i>1,000 Lbs</i>
Frozen Vegetables						
Asparagus	8,454	5,069	7,798	92	154	
Limas, Fordhook	4,018	3,163	2,401	60	76	
Limas, Baby	30,842	27,461	24,900	81	91	
Green Beans, Reg. Cut	86,226	81,681	68,770	80	84	
Green Beans, Fr. Style	10,714	12,074	9,758	91	81	
Broccoli, Spears	49,535	42,108	38,761	78	92	
Broccoli, Chopped & Cut	66,942	62,501	61,176	91	98	
Brussels Sprouts	17,198	12,943	11,633	68	90	
Carrots, Diced	76,614	78,928	67,812	89	86	
Carrots, Other	102,926	112,998	103,547	101	92	
Cauliflower	21,656	25,087	20,777	96	83	
Corn, Cut	268,295	275,131	224,195	84	81	
Corn, Cob	104,806	130,581	88,635	85	68	
Mixed Vegetables	46,163	50,242	58,163	126	116	
Okra	16,134	12,770	12,368	77	97	
Onion Rings	6,135	6,423	7,187	117	112	
Onions, Other	41,283	47,853	46,295	112	97	
Blackeye Peas	2,115	5,174	4,247	201	82	
Green Peas	115,936	104,255	82,970	72	80	
Peas & Carrots Mixed	4,998	4,606	4,417	88	96	
Spinach	74,009	94,750	111,375	150	118	
Squash, Summer/Zucchini	39,832	52,992	49,221	124	93	
Southern Greens	17,935	17,293	15,270	85	88	
Other Vegetables	272,386	285,702	264,020	97	92	
Total	1,485,152	1,551,785	1,385,696	93	89	1,009,196
Potatoes						
French Fries	940,430	921,987	861,055	92	93	
Other Frozen	237,642	253,532	243,928	103	96	
Total	1,178,072	1,175,519	1,104,983	94	94	832,562

See footnote(s) at end of table.

--continued

**Stocks in Cold Storage: By Commodity,
United States, May 2006**

Commodity	Stocks in All Warehouses			Percent of		Public Warehouse Stocks
	May 31, 2005	Apr 30, 2006	May 31, 2006	May 2005	Apr 2006	May 31, 2006
	<i>1,000 Pounds</i>	<i>1,000 Pounds</i>	<i>1,000 Pounds</i>	<i>Percent</i>	<i>Percent</i>	<i>1,000 Lbs</i>
Meat						
Frozen Beef						
Boneless ²	279,899	380,945	391,747	140	103	
Beef Cuts ³	38,291	47,563	42,776	112	90	
Total	318,190	428,508	434,523	137	101	432,474
(Government Owned)	5,503	3,876	3,218	58	83	
Frozen Pork						
Picnics, Bone-in	10,147	9,770	8,325	82	85	
Hams, Total	78,529	61,126	63,411	81	104	57,989
Bone-in	43,331	37,338	40,276	93	108	38,935
Boneless ⁴	35,198	23,788	23,135	66	97	19,054
Bellies	81,694	69,540	64,857	79	93	
Loins, Total	35,020	41,028	32,229	92	79	29,237
Bone-in	17,893	18,990	16,308	91	86	
Boneless ⁵	17,127	22,038	15,921	93	72	
Ribs ⁶	76,710	88,341	74,235	97	84	
Butts	9,816	12,857	9,677	99	75	
Trimming ⁷	48,429	50,095	39,631	82	79	
Other ⁸	78,344	93,863	92,630	118	99	
Variety Meats ⁹	38,085	29,262	27,504	72	94	
Unclassified ¹⁰	56,113	61,565	60,584	108	98	
Total	512,887	517,447	473,083	92	91	424,453
(Government Owned)	196	864	567	289	66	
Other						
Veal	1,635	2,570	2,265	139	88	
Lamb & Mutton	9,719	10,345	10,221	105	99	
Total	11,354	12,915	12,486	110	97	12,051
Canned						
Canned Hams	2,129	1,548	1,565	74	101	
Other Canned Meat	4,069	3,647	4,267	105	117	
Total	6,198	5,195	5,832	94	112	5,972
Total	848,629	964,065	925,924	109	96	874,950
Miscellaneous						
Cooler	535,262	743,767	656,151	123	88	297,322
Freezer	2,017,489	2,017,918	1,971,588	98	98	1,919,003
Total	2,552,751	2,761,685	2,627,739	103	95	2,216,325
Commodities						
Stored in Coolers	3,587,884	4,144,495	3,376,617	94	81	1,167,399
Stored in Freezers	9,484,417	9,297,358	9,063,308	96	97	6,754,279
Total	13,072,301	13,441,853	12,439,925	95	93	7,921,678

¹ Adjusted to 42.0 degrees Brix equivalent (9.896 pounds per gallon).

² Includes all boxed boneless beef, such as ground beef, roasts, steaks, loins, strips, rounds, trimmings, etc. Variety meats (edible offal), such as tongues, livers, hearts, kidneys, and other organs removed from slaughtered beef, are included as miscellaneous freezer stocks.

³ Includes all boxed primal beef cuts, bone-in.

⁴ Includes full ham, bone removed and individual muscles separated.

⁵ Includes pork tenderloins.

⁶ Includes spareribs and backribs.

⁷ Includes 42% regular trimmings, 72% special trimmings, boneless picnic meat, jowls, neckbone trimmings, blade, cheek, head, and shank meat, etc. Packaged bacon, sausage, and processed items, such as hot dogs and luncheon meats, are included in miscellaneous cooler or freezer stocks.

⁸ Includes ears, tails, feet, neckbones and snouts.

⁹ Includes tongues, kidneys, livers, stomachs, hearts, chitterlings, salivary glands, and other organs removed from slaughtered hogs.

¹⁰ Includes product unable to be classified elsewhere in this report.

**Stocks in Cold Storage: By Commodity, Region,
and United States, April 30, 2006, Revised**

Commodity	New England	Middle Atlantic	East North Central	West North Central	South Atlantic
	<i>1,000 Pounds</i>	<i>1,000 Pounds</i>	<i>1,000 Pounds</i>	<i>1,000 Pounds</i>	<i>1,000 Pounds</i>
Total Fresh Apples	995	170,652	69,257	7	82,253
Nuts					
Shelled					
Peanuts		176	34	22	262,730
Pecans ¹	20	159			9,435
In-Shell					
Pecans ¹					21,049
Dairy Products					
Natural Cheese					
American, Total	37,734	54,171	214,606	126,316	4,458
Other Natural Cheese	35	9,806	129,605	55,182	110
Frozen Poultry					
Chicken					
Broilers, Fryers					
Roasters (Whole)		2,107	471	2,263	6,684
Hens, Mature Chickens	4	608	44	154	5,150
Other	2,247	31,340	21,880	42,712	318,035
Total Chicken	2,251	34,055	22,395	45,129	329,869
Turkeys					
Whole Turkeys	1,955	15,279	592	51,861	22,796
Other Turkey	629	3,560	20,099	55,552	88,283
Total Turkey	2,584	18,839	20,691	107,413	111,079
Ducks		148	7,638	8	1
Total Poultry	4,835	53,042	50,724	152,550	440,949
Frozen Fruit					
Apples	160	18,973	48,849	166	533
Blueberries	4,186	3,007	17,530	1,322	396
Cherries, Tart (RTP)	27	2,454	60,926	42	487
Cherries, Sweet		181	2,758	265	1
Peaches	49	2,049	7,701	4,908	336
Raspberries, Red	64	1,151	1,911	396	59
Strawberries, Total	44	3,859	7,441	539	2,107
Other Frozen Fruit	1,718	7,136	157,919	4,614	1,029

See footnote(s) at end of table.

--continued

**Stocks in Cold Storage: By Commodity, Region,
and United States, April 30, 2006, Revised, (continued)**

Commodity	East South Central	West South Central	Mountain	Pacific	US Total
	<i>1,000 Pounds</i>	<i>1,000 Pounds</i>	<i>1,000 Pounds</i>	<i>1,000 Pounds</i>	<i>1,000 Pounds</i>
Total Fresh Apples		3,360	6,079	1,412,937	1,745,540
Nuts					
Shelled					
Peanuts	23,622	86,060	59	190	372,893
Pecans ¹	1,391	26,389		151	37,545
In-Shell					
Pecans ¹	2,139	144,131			167,319
Dairy Products					
Natural Cheese					
American, Total	403	3,585	36,612	96,535	574,420
Other Natural Cheese	2,611	1,003	606	14,009	212,967
Frozen Poultry					
Chicken					
Broilers, Fryers					
Roasters (Whole)	4,137	7,758	1,447	3,107	27,974
Hens, Mature Chickens	1	897	9	107	6,974
Other	138,766	202,562	4,178	44,327	806,047
Total Chicken	142,904	211,217	5,634	47,541	840,995
Turkeys					
Whole Turkeys	3,053	62,487	4,695	19,136	181,854
Other Turkey	1,503	31,018	7,617	33,617	241,878
Total Turkey	4,556	93,505	12,312	52,753	423,732
Ducks	27	6	29	145	8,002
Total Poultry	147,487	304,728	17,975	100,439	1,272,729
Frozen Fruit					
Apples	288	715	28	8,187	77,899
Blueberries	58	498	135	9,481	36,613
Cherries, Tart (RTP)		130	6,361	1,133	71,560
Cherries, Sweet	1	24	3	2,755	5,988
Peaches	22	494	146	16,541	32,246
Raspberries, Red	61	122	32	30,956	34,752
Strawberries, Total	507	20,226	268	113,942	148,933
Other Frozen Fruit	126	16,752	2,675	82,744	274,713

See footnote(s) at end of table.

--continued

**Stocks in Cold Storage: By Commodity, Region,
and United States, April 30, 2006, Revised**

Commodity	New England	Middle Atlantic	East North Central	West North Central	South Atlantic
	<i>1,000 Pounds</i>	<i>1,000 Pounds</i>	<i>1,000 Pounds</i>	<i>1,000 Pounds</i>	<i>1,000 Pounds</i>
Frozen Juice					
Orange Juice Conc. ²	12		1,118	87	1,044,717
Other Juice Concentrate	7,951	33,926	25,697	2,565	136,078
Total Frozen Juice	7,963	33,926	26,815	2,652	1,167,727
Frozen Vegetables ³					
Asparagus		461	1,319	13	105
Limas, Fordhook		904	723	67	369
Limas, Baby		5,012	2,847	1,598	3,938
Green Beans, Reg. Cut		12,305	19,368	4,625	2,371
Green Beans, Fr. Style		4,184	2,076	559	287
Broccoli, Spears		8,629	6,614		3,523
Broccoli, Chopped & Cut		9,646	6,352	1,346	4,087
Brussels Sprouts		2,627	1,279	18	411
Carrots, Diced		10,108	23,785	4,713	707
Carrots, Other		12,161	16,795	1,040	1,205
Cauliflower		3,334	2,548	128	1,138
Corn, Cut		23,179	47,705	33,360	4,709
Corn, Cob		5,926	22,797	22,829	4,758
Mixed Vegetables		3,884	9,145	303	2,304
Okra		1,172	356	3,065	2,192
Onion Rings		209	2,887	636	1,642
Onions, Other		3,190	2,987	337	4,468
Blackeye Peas		1,548	90		2,592
Green Peas		13,032	17,745	10,442	4,855
Peas & Carrots Mixed		1,111	828	2	177
Spinach		12,699	4,031	134	3,879
Squash, Summer/Zucchini		5,208	20,464	37	932
Southern Greens		1,881	232	1	1,821
Other Vegetables		35,243	46,379	7,717	20,563
Total Vegetables		177,653	259,352	92,970	73,033
Potatoes					
French Fries	34,709	20,006	69,694	105,117	18,977
Other Frozen	6,197	8,384	47,529	7,353	2,664
Total Potatoes	40,906	28,390	117,223	112,470	21,641
Meat					
Frozen Beef					
Boneless ⁴	1,332	53,598	37,099	108,653	31,834
Beef Cuts ⁵	270	1,200	4,383	17,027	3,281
Total Beef	1,602	54,798	41,482	125,680	35,115
Frozen Pork					
Ribs ⁶	404	2,052	25,901	39,013	12,219
Trimming ⁷	30	459	9,984	28,660	2,428
Other ⁸	5,482	468	28,154	43,387	8,992
Other					
Veal	12	851	429	1	46
Lamb & Mutton		6,376	1,328	55	92
Total Other Meat	12	7,227	1,757	56	138

See footnote(s) at end of table.

--continued

**Stocks in Cold Storage: By Commodity, Region,
and United States, April 30, 2006, Revised, (continued)**

Commodity	East South Central	West South Central	Mountain	Pacific	US Total
	<i>1,000 Pounds</i>	<i>1,000 Pounds</i>	<i>1,000 Pounds</i>	<i>1,000 Pounds</i>	<i>1,000 Pounds</i>
Frozen Juice					
Orange Juice Concentrate	36	2,484	1,830	37,259	1,087,543
Other Juice Concentrate	74	14,911	2,170	99,919	323,291
Total Frozen Juice	110	17,395	4,000	137,178	1,410,834
Frozen Vegetables ³					
Asparagus		246	7	2,918	5,069
Limas, Fordhook		183		917	3,163
Limas, Baby		455	178	13,433	27,461
Green Beans, Reg. Cut		1,165	131	41,716	81,681
Green Beans, Fr. Style		233	40	4,695	12,074
Broccoli, Spears		16,891		6,451	42,108
Broccoli, Chopped & Cut		18,699	449	21,922	62,501
Brussels Sprouts		386		8,222	12,943
Carrots, Diced		1,803	23	37,789	78,928
Carrots, Other		12,249	100	69,448	112,998
Cauliflower		5,074	84	12,781	25,087
Corn, Cut		1,598	4,235	160,345	275,131
Corn, Cob		1,263	395	72,613	130,581
Mixed Vegetables		10,093	1,062	23,451	50,242
Okra		5,470		515	12,770
Onion Rings		343	490	216	6,423
Onions, Other		1,276	15,593	20,002	47,853
Blackeye Peas		743		201	5,174
Green Peas		3,106	3,994	51,081	104,255
Peas & Carrots Mixed		134	27	2,327	4,606
Spinach		16,133	38	57,836	94,750
Squash, Summer/Zucchini		6,312	1,322	18,717	52,992
Southern Greens		12,198	11	1,149	17,293
Other Vegetables		32,289	10,936	132,575	285,702
Total Vegetables		148,342	39,115	761,320	1,551,785
Potatoes					
French Fries	6,876	15,160	182,069	469,379	921,987
Other Frozen	1,964	25,219	51,012	103,210	253,532
Total Potatoes	8,840	40,379	233,081	572,589	1,175,519
Meat					
Frozen Beef					
Boneless ⁴	6,043	84,265	8,580	49,541	380,945
Beef Cuts ⁵	1,750	6,691	7,485	5,476	47,563
Total Beef	7,793	90,956	16,065	55,017	428,508
Frozen Pork					
Ribs ⁶	2,970	4,206	418	1,158	88,341
Trimming ⁷	1,245	4,440	512	2,337	50,095
Other ⁸	2,982	2,712	157	1,529	93,863
Other					
Veal		102		1,129	2,570
Lamb & Mutton	5	370	74	2,045	10,345
Total Other Meat	5	472	74	3,174	12,915

¹ East North Central combined with South Atlantic. Mountain and West North Central combined with West South Central.

² Middle Atlantic combined with South Atlantic.

³ New England combined with Middle Atlantic. East South Central combined with South Atlantic.

⁴ Includes all boxed boneless beef, such as ground beef, roasts, steaks, loins, strips, rounds, trimmings, etc. Variety meats (edible offal), such as tongues, livers, hearts, kidneys, and other organs removed from slaughtered beef, are included as miscellaneous freezer stocks.

⁵ Includes all boxed primal beef cuts, bone-in.

⁶ Includes spare ribs and back ribs.

⁷ Includes 42% regular trimmings, 72% special trimmings, boneless picnic meat, jowls, neckbone trimmings, blade, cheek, head, and shank meat, etc. Packaged bacon, sausage, and processed items, such as hot dogs and luncheon meats, are included in miscellaneous cooler or freezer stocks.

⁸ Includes ears, tails, feet, neckbones and snouts.

**Stocks in Cold Storage: By Commodity, Region,
and United States, May 31, 2006**

Commodity	New England	Middle Atlantic	East North Central	West North Central	South Atlantic
	<i>1,000 Pounds</i>	<i>1,000 Pounds</i>	<i>1,000 Pounds</i>	<i>1,000 Pounds</i>	<i>1,000 Pounds</i>
Total Fresh Apples	422	106,050	38,820		56,076
Nuts					
Shelled					
Peanuts		250	27	20	238,110
Pecans ¹	22	212			9,860
In-Shell					
Pecans ¹					18,105
Dairy Products					
Natural Cheese					
American, Total	36,524	51,228	223,236	125,337	4,219
Other Natural Cheese	37	10,548	135,121	56,777	102
Frozen Poultry					
Chicken					
Broilers, Fryers					
Roasters (Whole)		1,598	312	2,569	6,070
Hens, Mature Chickens	4	590	28	141	4,209
Other	2,326	30,454	20,890	38,575	286,371
Total Chicken	2,330	32,642	21,230	41,285	296,650
Turkeys					
Whole Turkeys	3,053	16,855	6,803	58,528	29,041
Other Turkey	674	4,737	17,242	56,204	85,472
Total Turkey	3,727	21,592	24,045	114,732	114,513
Ducks		124	7,543	6	8
Total Poultry	6,057	54,358	52,818	156,023	411,171
Frozen Fruit					
Apples	179	19,115	49,623	127	629
Blueberries	4,045	1,866	13,210	1,172	185
Cherries, Tart (RTP)	23	2,274	52,852	37	414
Cherries, Sweet		209	2,284	221	1
Peaches	46	1,589	6,877	5,860	312
Raspberries, Red	57	1,400	1,761	414	51
Strawberries, Total	123	3,932	8,435	631	1,497
Other Frozen Fruit	1,574	7,032	137,803	4,183	932

See footnote(s) at end of table.

--continued

**Stocks in Cold Storage: By Commodity, Region,
and United States, May 31, 2006 (continued)**

Commodity	East South Central	West South Central	Mountain	Pacific	US Total
	<i>1,000 Pounds</i>	<i>1,000 Pounds</i>	<i>1,000 Pounds</i>	<i>1,000 Pounds</i>	<i>1,000 Pounds</i>
Total Fresh Apples		2,520	2,982	926,676	1,133,546
Nuts					
Shelled					
Peanuts	17,064	91,115	58	177	346,821
Pecans ¹	1,379	30,075		181	41,729
In-Shell					
Pecans ¹	2,017	123,208			143,330
Dairy Products					
Natural Cheese					
American, Total	514	4,531	40,169	94,910	580,668
Other Natural Cheese	2,777	1,093	395	15,247	222,097
Frozen Poultry					
Chicken					
Broilers, Fryers					
Roasters (Whole)	3,070	7,248	1,424	2,923	25,214
Hens, Mature Chickens	1	1,232	16	140	6,361
Other	126,348	191,270	3,850	43,168	743,252
Total Chicken	129,419	199,750	5,290	46,231	774,827
Turkeys					
Whole Turkeys	5,169	69,737	6,539	22,102	217,827
Other Turkey	2,850	36,698	8,395	35,891	248,163
Total Turkey	8,019	106,435	14,934	57,993	465,990
Ducks	26	6	46	170	7,929
Total Poultry	137,464	306,191	20,270	104,394	1,248,746
Frozen Fruit					
Apples	215	808	42	11,887	82,625
Blueberries	46	330	134	8,014	29,002
Cherries, Tart (RTP)		116	4,533	1,112	61,361
Cherries, Sweet	1	36	3	1,908	4,663
Peaches	20	530	146	14,533	29,913
Raspberries, Red	54	384	28	26,440	30,589
Strawberries, Total	789	24,395	331	191,881	232,014
Other Frozen Fruit	141	14,519	2,387	80,803	249,374

See footnote(s) at end of table.

--continued

**Stocks in Cold Storage: By Commodity, Region,
and United States, May 31, 2006**

Commodity	New England	Middle Atlantic	East North Central	West North Central	South Atlantic
	<i>1,000 Pounds</i>	<i>1,000 Pounds</i>	<i>1,000 Pounds</i>	<i>1,000 Pounds</i>	<i>1,000 Pounds</i>
Frozen Juice					
Orange Juice Conc. ²	18		866	113	1,112,947
Other Juice Concentrate	4,334	29,027	27,152	2,484	127,942
Total Frozen Juice	4,352	29,027	28,018	2,597	1,228,306
Frozen Vegetables ³					
Asparagus		740	4,065	4	72
Limas, Fordhook		736	496	94	299
Limas, Baby		4,322	2,479	1,474	3,617
Green Beans, Reg. Cut		9,284	16,118	4,195	2,042
Green Beans, Fr. Style		3,500	1,573	502	209
Broccoli, Spears		7,730	6,188		3,096
Broccoli, Chopped & Cut		9,733	6,510	1,310	3,832
Brussels Sprouts		2,284	1,124	53	387
Carrots, Diced		8,706	20,733	4,089	584
Carrots, Other		11,890	14,434	863	1,036
Cauliflower		2,233	2,194	801	841
Corn, Cut		17,944	39,885	25,727	5,292
Corn, Cob		5,567	15,786	15,452	3,290
Mixed Vegetables		3,828	10,005	240	2,346
Okra		1,360	341	2,289	1,890
Onion Rings		164	3,400	479	1,787
Onions, Other		3,003	2,967	234	4,226
Blackeye Peas		1,327	83	18	2,180
Green Peas		9,833	14,168	7,426	4,462
Peas & Carrots Mixed		873	900	2	145
Spinach		16,907	4,769	66	4,717
Squash, Summer/Zucchini		4,929	19,407	35	788
Southern Greens		1,680	203	1	2,034
Other Vegetables		31,645	44,000	7,460	18,219
Total Vegetables		159,857	231,828	72,814	49,396
Potatoes					
French Fries	32,414	18,198	61,806	90,609	21,795
Other Frozen	7,839	7,776	32,837	7,468	2,825
Total Potatoes	40,253	25,974	94,643	98,077	24,620
Meat					
Frozen Beef					
Boneless ⁴	1,372	53,626	38,256	112,690	32,315
Beef Cuts ⁵	231	1,078	3,835	14,856	2,567
Total Beef	1,603	54,704	42,091	127,546	34,882
Frozen Pork					
Ribs ⁶	381	2,875	20,124	32,965	10,385
Trimming ⁷		314	6,726	23,592	1,453
Other ⁸	4,025	342	29,153	42,765	9,829
Other					
Veal	12	820	412	1	34
Lamb & Mutton		5,895	1,418	56	87
Total Other Meat	12	6,715	1,830	57	121

See footnote(s) at end of table.

--continued

**Stocks in Cold Storage: By Commodity, Region,
and United States, May 31, 2006 (continued)**

Commodity	East South Central	West South Central	Mountain	Pacific	US Total
	<i>1,000 Pounds</i>	<i>1,000 Pounds</i>	<i>1,000 Pounds</i>	<i>1,000 Pounds</i>	<i>1,000 Pounds</i>
Frozen Juice					
Orange Juice Concentrate	32	2,583	1,737	39,447	1,157,743
Other Juice Concentrate	69	14,735	1,974	96,387	304,104
Total Frozen Juice	101	17,318	3,711	135,834	1,461,847
Frozen Vegetables ³					
Asparagus		283	11	2,623	7,798
Limas, Fordhook		140		636	2,401
Limas, Baby		452	11	12,545	24,900
Green Beans, Reg. Cut		989	129	36,013	68,770
Green Beans, Fr. Style		110	19	3,845	9,758
Broccoli, Spears		16,557	10	5,180	38,761
Broccoli, Chopped & Cut		17,372	284	22,135	61,176
Brussels Sprouts		450		7,335	11,633
Carrots, Diced		978	20	32,702	67,812
Carrots, Other		11,668	70	63,586	103,547
Cauliflower		4,200	122	10,386	20,777
Corn, Cut		1,547	3,167	130,633	224,195
Corn, Cob		1,168	387	46,985	88,635
Mixed Vegetables		8,633	1,228	31,883	58,163
Okra		6,091		397	12,368
Onion Rings		559	594	204	7,187
Onions, Other		1,553	15,373	18,939	46,295
Blackeye Peas		451		188	4,247
Green Peas		3,202	5,747	38,132	82,970
Peas & Carrots Mixed		131	24	2,342	4,417
Spinach		16,633	28	68,255	111,375
Squash, Summer/Zucchini		7,148	153	16,761	49,221
Southern Greens		10,257	11	1,084	15,270
Other Vegetables		32,526	10,218	119,952	264,020
Total Vegetables		143,098	37,606	672,741	1,385,696
Potatoes					
French Fries	7,354	18,333	167,838	442,708	861,055
Other Frozen	2,416	25,068	54,902	102,797	243,928
Total Potatoes	9,770	43,401	222,740	545,505	1,104,983
Meat					
Frozen Beef					
Boneless ⁴	6,076	90,829	9,549	47,034	391,747
Beef Cuts ⁵	1,477	6,234	7,115	5,383	42,776
Total Beef	7,553	97,063	16,664	52,417	434,523
Frozen Pork					
Ribs ⁶	2,508	3,499	347	1,151	74,235
Trimming ⁷	1,347	4,573	90	1,536	39,631
Other ⁸	2,482	2,257	186	1,591	92,630
Other					
Veal		182		804	2,265
Lamb & Mutton	5	433	46	2,281	10,221
Total Other Meat	5	615	46	3,085	12,486

¹ East North Central combined with South Atlantic. Mountain and West North Central Combined with West South Central.

² Middle Atlantic combined with South Atlantic.

³ New England combined with Middle Atlantic. East South Central combined with South Atlantic.

⁴ Includes all boxed boneless beef, such as ground beef, roasts, steaks, loins, strips, rounds, trimmings, etc. Variety meats (edible offal), such as tongues, livers, hearts, kidneys, and other organs removed from slaughtered beef, are included as miscellaneous freezer stocks.

⁵ Includes all boxed primal beef cuts, bone-in.

⁶ Includes spare ribs and back ribs.

⁷ Includes 42% regular trimmings, 72% special trimmings, boneless picnic meat, jowls, neckbone trimmings, blade, cheek, head, and shank meat, etc. Packaged bacon, sausage, and processed items, such as hot dogs and luncheon meats, are included in miscellaneous cooler or freezer stocks.

⁸ Includes ears, tails, feet, neckbones and snouts.

Cold Storage Regions



Reliability of Cold Storage Estimates

Survey Procedures: Questionnaires are mailed about the 24th of each month to all operators on the list of approximately 1,400 public and private cold storage warehouses. In addition, apple data are obtained from special surveys and other sources (State Departments of Agriculture, U.S. Apple Association, etc.). All survey data represent stocks as of the end of the month.

Data are collected from warehouses artificially cooled to a temperature of 50 degrees Fahrenheit or lower, and whose food products are normally stored for 30 days or more. All food items in these facilities are reported regardless of the number of days stored at the time of the report. Also included are specialized storage facilities meeting the 30 day requirement, such as fruit houses, dairy manufacturing plants, frozen fruit, fruit juice, and vegetable processors, and poultry and meat packing plants. Excluded are stocks in space maintained by wholesalers, jobbers, distributors, chain stores, locker plants containing individual lockers, meat packer branch houses, and frozen food processors whose entire inventories are turned over more than once a month.

Estimating Procedures: Data for reporting firms are added to estimates for non-reporting firms to obtain regional and National totals. Estimates for non-reporting firms are obtained by multiplying the previous month's figure by a percent change from the previous month. The percent change is calculated for each item from totals of the current and previous month summed from firms that reported both months.

Revision Policy: Data are revised the following month based on late reports or corrected data. Final figures are published in the annual summary in February of the following year.

Reliability: Reports are received from 900 firms each month which represent about 70 percent of the total capacity. Firms that are not on the list or firms who have never reported are not represented in the data. Monthly data can vary due to different firms reporting month to month. Survey data are also subject to non-sampling errors such as omissions and mistakes in reporting and in processing the data. While these errors cannot be measured directly, they are minimized by carefully reviewing all reported data for consistency and reasonableness.

Information Contacts

Listed below are the commodity specialists in the Livestock Branch of the National Agricultural Statistics Service to contact for additional information.

Dan Kerestes, Chief, Livestock Branch	(202) 720-3570
Darin Jantzi, Head, Poultry and Specialty Commodities Section	(202) 720-3570
David Colwell - Cold Storage	(202) 720-8784
Fleming Gibson - Egg Products, Poultry Slaughter, Catfish Processing, Mink	(202) 690-3237
John Lange - Turkeys Raised, Turkey Hatchery, Catfish Production, Trout Production, Census of Aquaculture	(202) 720-0585
Sharyn Lavender - Chickens, Eggs	(202) 720-3244
Jody Roberts - Broiler Hatchery, Chicken Hatchery, Honey	(202) 690-8632

ACCESS TO REPORTS!!

For your convenience, there are several ways to obtain NASS reports, data products, and services:

INTERNET ACCESS

All NASS reports are available free of charge on the worldwide Internet. For access, connect to the Internet and go to the NASS Home Page at: www.nass.usda.gov.

E-MAIL SUBSCRIPTION

All NASS reports are available by subscription free of charge direct to your e-mail address. Starting with the NASS Home Page at www.nass.usda.gov, under the right navigation, *Receive reports by Email*, click on **National** or **State**. Follow the instructions on the screen.

PRINTED REPORTS OR DATA PRODUCTS

CALL OUR TOLL-FREE ORDER DESK: 800-999-6779 (U.S. and Canada)
Other areas, please call 703-605-6220 FAX: 703-605-6900
(Visa, MasterCard, check, or money order acceptable for payment.)

ASSISTANCE

For **assistance** with general agricultural statistics or further information about NASS or its products or services, contact the **Agricultural Statistics Hotline** at **800-727-9540**, 7:30 a.m. to 4:00 p.m. ET, or e-mail: nass@nass.usda.gov.

The U.S. Department of Agriculture (USDA) prohibits discrimination in all its programs and activities on the basis of race, color, national origin, age, disability, and where applicable, sex, marital status, familial status, parental status, religion, sexual orientation, genetic information, political beliefs, reprisal, or because all or part of an individual's income is derived from any public assistance program. (Not all prohibited bases apply to all programs.) Persons with disabilities who require alternative means for communication of program information (Braille, large print, audiotape, etc.) should contact USDA's TARGET Center at (202) 720-2600 (voice and TDD).

To file a complaint of discrimination, write to USDA, Director, Office of Civil Rights, 1400 Independence Avenue, S.W., Washington, D.C. 20250-9410, or call (800) 795-3272 (voice) or (202) 720-6382 (TDD). USDA is an equal opportunity provider and employer.