



NASS

FACT FINDERS FOR AGRICULTURE
UNITED STATES DEPARTMENT OF AGRICULTURE

Washington, D.C.

Cold Storage

Released August 22, 2006, by the National Agricultural Statistics Service (NASS), Agricultural Statistics Board, U.S. Department of Agriculture. For information on *Cold Storage* call David Colwell at (202) 720-8784, office hours 7:30 a.m. to 4:00 p.m. ET.

Highlights

Frozen food stocks in refrigerated warehouses on July 31, 2006 were greater than year earlier levels for butter, beef, eggs, cheese, and chicken.

Butter stocks were down 1 percent from last month, but up 30 percent from a year ago.

Total red meat supplies in freezers were up 4 percent from last month and up 5 percent from last year. Frozen pork supplies were up 1 percent from last month, but down 8 percent from the previous year. Stocks of pork bellies were down 29 percent from last month and down 26 percent from last year.

Total frozen poultry supplies on July 31, 2006 were down 2 percent from the previous month, but up 2 percent from a year ago. Total stocks of chicken were down 4 percent from the previous month, but up 4 percent from last year. Total pounds of turkey in freezers were up 1 percent from last month, but down 2 percent from July 31, 2005.

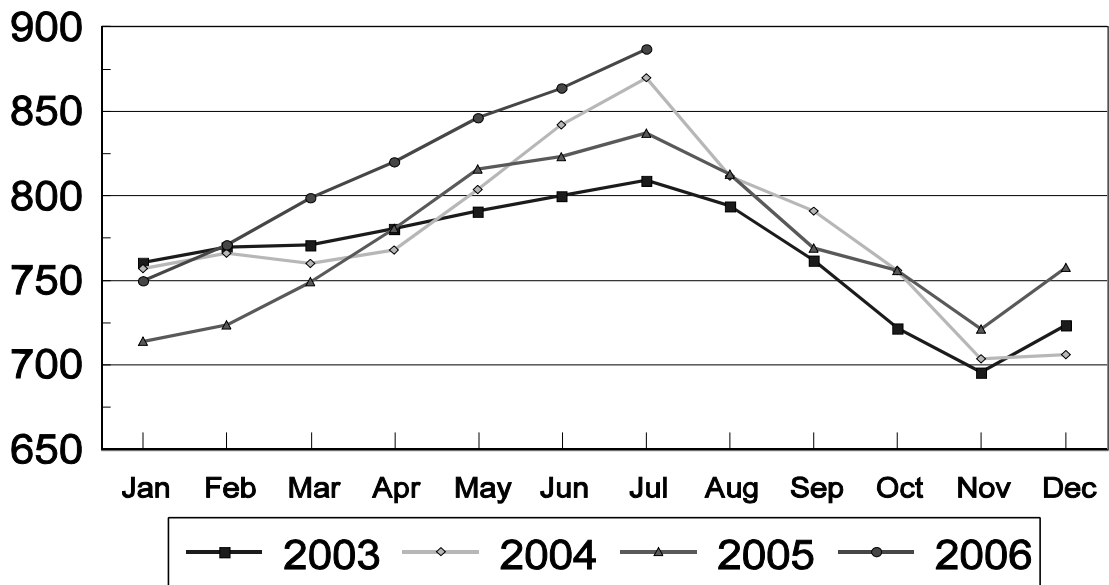
This page is intentionally blank.

Contents

	Page
Stocks in Cold Storage By Commodity	
United States, July 2006	1
Region, and United States, June 30, 2006	5
Region, and United States, July 31, 2006	9
Reliability Statement	14
Information Contacts	14

Total Natural Cheese - United States Cold Storage Stocks, 2003-2006

Million Pounds



**Stocks in Cold Storage: By Commodity,
United States, July 2006**

Commodity	Stocks in All Warehouses			Percent of		Public Warehouse Stocks
	Jul 31, 2005	Jun 30, 2006 ¹	Jul 31, 2006	Jul 2005	Jun 2006	Jul 31, 2006
	<i>1,000 Pounds</i>	<i>1,000 Pounds</i>	<i>1,000 Pounds</i>	<i>Percent</i>	<i>Percent</i>	<i>1,000 Lbs</i>
Fresh Fruit						
Apples						
Regular Storage	14,912	30,281	5,943	40	20	
Controlled Atmosphere	433,693	602,065	280,499	65	47	
Total	448,605	632,346	286,442	64	45	45
Pears						
Bartlett	8,576					
Other Varieties	601	14,615	1,807	301	12	
Total	9,177	14,615	1,807	20	12	37
Nuts						
Shelled						
Peanuts	294,224	316,637	302,317	103	95	
Pecans	34,207	42,887	43,394	127	101	
Other Shelled	108,144	113,521	100,615	93	89	
Total	436,575	473,045	446,326	102	94	170,152
In-Shell						
Peanuts	28,153	27,374	18,612	66	68	
Pecans	42,461	127,754	102,450	241	80	
Other In-Shell	7,436	9,001	8,357	112	93	
Total	78,050	164,129	129,419	166	79	40,710
Dairy Products						
Butter, Total	176,666	230,376	229,118	130	99	189,027
(Government Owned)	113	113	97	86	86	
Natural Cheese						
American, Total	603,471	598,212	599,114	99	100	
(Government Owned)	546	21	79	14	376	
Swiss	22,483	35,536	36,589	163	103	
Other Natural Cheese	211,227	229,773	251,681	119	110	
Total	837,181	863,521	887,384	106	103	482,107
Eggs, Frozen						
Whites	2,793	2,963	2,954	106	100	
Yolks	1,174	1,146	1,274	109	111	
Whole & Mixed	12,501	13,892	14,996	120	108	
Unclassified	3,143	4,061	4,387	140	108	
Total	19,611	22,062	23,611	120	107	22,668
Frozen Poultry						
Chicken						
Broilers, Fryers						
Roasters (Whole)	29,885	22,942	20,100	67	88	
Hens, Mature Chickens	2,835	7,880	8,502	300	108	
Breasts & Breast Meat	143,016	134,385	133,823	94	100	
Drumsticks	10,411	22,743	21,261	204	93	
Leg Quarters	73,390	85,806	69,850	95	81	
Legs	12,363	10,350	8,504	69	82	
Thigh & Thigh Quarters	10,315	13,166	10,231	99	78	
Thigh Meat	11,627	18,019	17,344	149	96	
Wings	43,947	40,521	38,310	87	95	
Paws and Feet	9,023	12,872	13,021	144	101	
Other	375,380	412,589	412,345	110	100	
Total Chicken	722,192	781,273	753,291	104	96	

See footnote(s) at end of table.

--continued

**Stocks in Cold Storage: By Commodity,
United States, July 2006**

Commodity	Stocks in All Warehouses			Percent of		Public Warehouse Stocks
	Jul 31, 2005	Jun 30, 2006 ¹	Jul 31, 2006	Jul 2005	Jun 2006	Jul 31, 2006
	<i>1,000 Pounds</i>	<i>1,000 Pounds</i>	<i>1,000 Pounds</i>	<i>Percent</i>	<i>Percent</i>	<i>1,000 Lbs</i>
Turkeys						
Toms (Whole Carcasses)	168,568	125,490	132,743	79	106	
Hens (Whole Carcasses)	117,718	109,861	114,336	97	104	
Whole Turkeys	286,286	235,351	247,079	86	105	
Other Turkey	232,593	272,114	263,945	113	97	
Total Turkey	518,879	507,465	511,024	98	101	375,322
Ducks	2,523	6,126	7,510	298	123	
Total Poultry	1,243,594	1,294,864	1,271,825	102	98	1,088,379
Frozen Fruit						
Apples	76,475	78,222	71,690	94	92	
Apricots	6,789	4,294	4,079	60	95	
Blackberries, Total	33,883	14,397	31,864	94	221	
IQF	23,160	10,221	21,272	92	208	
Pails and Tubs	4,780	1,770	5,533	116	313	
Barrels, 400 lbs net	5,546	2,393	4,999	90	209	
Concentrate	397	13	60	15	462	
Blueberries	62,282	26,785	62,006	100	231	
Boysenberries	2,397	1,690	2,642	110	156	
Cherries, Tart (RTP)	136,042	47,806	138,234	102	289	
Cherries, Tart (Juice)	5,972	1,383	5,000	84	362	
Cherries, Sweet	15,048	4,225	16,768	111	397	
Grapes	2,961	2,835	2,383	80	84	
Peaches	17,771	21,848	21,199	119	97	
Raspberries, Black	2,992	2,656	3,513	117	132	
Raspberries, Red, Total	83,470	36,572	88,809	106	243	
IQF	23,780	19,313	37,698	159	195	
Pails and Tubs	15,518	5,443	12,830	83	236	
Barrels, 400 lbs net	42,483	10,076	36,948	87	367	
Concentrate	1,689	1,740	1,333	79	77	
Strawberries, Total	418,138	382,403	402,912	96	105	
IQF and Poly	191,146	135,770	164,558	86	121	
Pails and Tubs	134,220	144,724	142,185	106	98	
Barrels and Drums	75,085	74,891	70,424	94	94	
Juice Stock	17,687	27,018	25,745	146	95	
Other Frozen Fruit	181,378	224,001	209,763	116	94	
Total	1,045,598	849,117	1,060,862	101	125	918,272
Frozen Juice						
Orange Juice Conc. ²	1,501,593	1,104,150	1,002,257	67	91	
(Gallon Equivalent)	151,737	111,575	101,279			
Other Juice Concentrate	268,457	282,949	268,835	100	95	
Total	1,770,050	1,387,099	1,271,092	72	92	183,446

See footnote(s) at end of table.

--continued

**Stocks in Cold Storage: By Commodity,
United States, July 2006**

Commodity	Stocks in All Warehouses			Percent of		Public Warehouse Stocks
	Jul 31, 2005	Jun 30, 2006 ¹	Jul 31, 2006	Jul 2005	Jun 2006	Jul 31, 2006
	<i>1,000 Pounds</i>	<i>1,000 Pounds</i>	<i>1,000 Pounds</i>	<i>Percent</i>	<i>Percent</i>	<i>1,000 Lbs</i>
Frozen Vegetables						
Asparagus	13,670	11,929	11,876	87	100	
Limas, Fordhook	2,773	2,368	2,019	73	85	
Limas, Baby	24,823	21,851	18,332	74	84	
Green Beans, Reg. Cut	138,773	54,377	115,385	83	212	
Green Beans, Fr. Style	17,026	8,388	19,776	116	236	
Broccoli, Spears	46,889	32,699	34,061	73	104	
Broccoli, Chopped & Cut	61,798	61,769	64,983	105	105	
Brussels Sprouts	13,388	10,243	8,313	62	81	
Carrots, Diced	52,669	64,540	52,318	99	81	
Carrots, Other	89,532	97,528	91,421	102	94	
Cauliflower	17,539	18,694	21,150	121	113	
Corn, Cut	224,782	188,556	180,941	80	96	
Corn, Cob	78,715	71,738	71,791	91	100	
Mixed Vegetables	49,049	50,856	50,671	103	100	
Okra	35,936	26,363	35,758	100	136	
Onion Rings	5,171	7,532	7,663	148	102	
Onions, Other	42,060	38,192	35,812	85	94	
Blackeye Peas	2,567	4,080	3,575	139	88	
Green Peas	354,835	222,513	391,423	110	176	
Peas & Carrots Mixed	5,778	5,422	6,814	118	126	
Spinach	77,762	107,607	100,315	129	93	
Squash, Summer/Zucchini	39,708	50,704	55,662	140	110	
Southern Greens	17,538	17,546	17,553	100	100	
Other Vegetables	290,025	238,391	247,947	85	104	
Total	1,702,806	1,413,886	1,645,559	97	116	1,144,148
Potatoes						
French Fries	905,112	877,400	774,860	86	88	
Other Frozen	249,766	230,710	221,802	89	96	
Total	1,154,878	1,108,110	996,662	86	90	733,894

See footnote(s) at end of table.

--continued

**Stocks in Cold Storage: By Commodity,
United States, July 2006**

Commodity	Stocks in All Warehouses			Percent of		Public Warehouse Stocks
	Jul 31, 2005	Jun 30, 2006 ¹	Jul 31, 2006	Jul 2005	Jun 2006	Jul 31, 2006
	<i>1,000 Pounds</i>	<i>1,000 Pounds</i>	<i>1,000 Pounds</i>	<i>Percent</i>	<i>Percent</i>	<i>1,000 Lbs</i>
Meat						
Frozen Beef						
Boneless ³	342,331	394,324	421,109	123	107	
Beef Cuts ⁴	42,915	42,468	45,692	106	108	
Total	385,246	436,792	466,801	121	107	464,201
(Government Owned)	2,041	3,038	6,118	300	201	
Frozen Pork						
Picnics, Bone-in	7,768	6,663	7,456	96	112	
Hams, Total	102,755	68,739	79,883	78	116	75,760
Bone-in	59,258	45,020	53,080	90	118	50,750
Boneless ⁵	43,497	23,719	26,803	62	113	25,010
Bellies	50,315	52,535	37,267	74	71	
Loins, Total	27,133	28,076	24,719	91	88	22,100
Bone-in	16,326	13,009	11,018	67	85	
Boneless ⁶	10,807	15,067	13,701	127	91	
Ribs ⁷	49,888	55,136	53,050	106	96	
Butts	6,516	6,648	8,427	129	127	
Trimming ⁸	37,727	31,057	33,589	89	108	
Other ⁹	76,027	78,101	87,357	115	112	
Variety Meats ¹⁰	37,656	33,104	36,819	98	111	
Unclassified ¹¹	52,199	48,292	43,085	83	89	
Total	447,984	408,351	411,652	92	101	366,121
(Government Owned)	216	621	888	411	143	
Other						
Veal	3,303	4,013	2,844	86	71	
Lamb & Mutton	11,756	9,951	10,333	88	104	
Total	15,059	13,964	13,177	88	94	13,131
Canned						
Canned Hams	4,750	1,609	1,655	35	103	
Other Canned Meat	2,817	4,337	3,768	134	87	
Total	7,567	5,946	5,423	72	91	5,422
Total	855,856	865,053	897,053	105	104	848,875
Miscellaneous						
Cooler	543,018	642,082	605,264	111	94	325,173
Freezer	2,138,862	2,087,756	2,082,090	97	100	2,020,291
Total	2,681,880	2,729,838	2,687,354	100	98	2,345,464
Commodities						
Stored in Coolers	2,374,848	2,817,495	2,383,242	100	85	1,185,012
Stored in Freezers	10,085,679	9,230,566	9,451,272	94	102	7,143,578
Total	12,460,527	12,048,061	11,834,514	95	98	8,328,590

¹ Revised.

² Adjusted to 42.0 degrees Brix equivalent (9.896 pounds per gallon).

³ Includes all boxed boneless beef, such as ground beef, roasts, steaks, loins, strips, rounds, trimmings, etc. Variety meats (edible offal), such as tongues, livers, hearts, kidneys, and other organs removed from slaughtered beef, are included as miscellaneous freezer stocks.

⁴ Includes all boxed primal beef cuts, bone-in.

⁵ Includes full ham, bone removed and individual muscles separated.

⁶ Includes pork tenderloins.

⁷ Includes spareribs and backribs.

⁸ Includes 42% regular trimmings, 72% special trimmings, boneless picnic meat, jowls, neckbone trimmings, blade, cheek, head, and shank meat, etc. Packaged bacon, sausage, and processed items, such as hot dogs and luncheon meats, are included in miscellaneous cooler or freezer stocks.

⁹ Includes ears, tails, feet, neckbones and snouts.

¹⁰ Includes tongues, kidneys, livers, stomachs, hearts, chitterlings, salivary glands, and other organs removed from slaughtered hogs.

¹¹ Includes product unable to be classified elsewhere in this report.

**Stocks in Cold Storage: By Commodity, Region,
and United States, June 30, 2006, Revised**

Commodity	New England	Middle Atlantic	East North Central	West North Central	South Atlantic
	<i>1,000 Pounds</i>	<i>1,000 Pounds</i>	<i>1,000 Pounds</i>	<i>1,000 Pounds</i>	<i>1,000 Pounds</i>
Total Fresh Apples	78	65,730			35,669
Nuts					
Shelled					
Peanuts		248	23	18	220,674
Pecans ¹	22	196			9,419
In-Shell					
Pecans ¹					16,468
Dairy Products					
Natural Cheese					
American, Total	36,096	51,484	233,549	120,310	4,482
Other Natural Cheese	338	11,473	138,141	60,292	134
Frozen Poultry					
Chicken					
Broilers, Fryers					
Roasters (Whole)		1,632	312	1,624	6,529
Hens, Mature Chickens	4	506	64	186	5,251
Other	2,336	32,158	20,358	40,711	286,448
Total Chicken	2,340	34,296	20,734	42,521	298,228
Turkeys					
Whole Turkeys	3,691	25,496	7,702	62,411	33,638
Other Turkey	679	4,974	18,473	61,179	99,039
Total Turkey	4,370	30,470	26,175	123,590	132,677
Ducks		121	5,757	3	30
Total Poultry	6,710	64,887	52,666	166,114	430,935
Frozen Fruit					
Apples	162	16,977	47,889	173	908
Blueberries	2,552	2,146	10,455	940	2,057
Cherries, Tart (RTP)	18	1,899	42,339	78	
Cherries, Sweet		111	1,940	206	
Peaches	34	1,658	5,903	6,060	80
Raspberries, Red	68	1,228	2,267	485	15
Strawberries, Total	102	4,689	7,876	300	1,472
Other Frozen Fruit	1,378	6,853	117,074	3,959	982

See footnote(s) at end of table.

--continued

**Stocks in Cold Storage: By Commodity, Region,
and United States, June 30, 2006, Revised, (continued)**

Commodity	East South Central	West South Central	Mountain	Pacific	US Total
	<i>1,000 Pounds</i>	<i>1,000 Pounds</i>	<i>1,000 Pounds</i>	<i>1,000 Pounds</i>	<i>1,000 Pounds</i>
Total Fresh Apples		1,260	2,127	527,482	632,346
Nuts					
Shelled					
Peanuts	14,300	81,154	62	158	316,637
Pecans ¹	1,267	31,839		144	42,887
In-Shell					
Pecans ¹	1,519	109,767			127,754
Dairy Products					
Natural Cheese					
American, Total	364	5,617	48,806	97,504	598,212
Other Natural Cheese	2,886	1,033	294	15,182	229,773
Frozen Poultry					
Chicken					
Broilers, Fryers					
Roasters (Whole)	2,950	5,807	1,182	2,906	22,942
Hens, Mature Chickens	451	1,271	6	141	7,880
Other	123,879	195,715	3,152	45,694	750,451
Total Chicken	127,280	202,793	4,340	48,741	781,273
Turkeys					
Whole Turkeys	6,336	66,156	9,966	19,955	235,351
Other Turkey	3,172	37,514	6,822	40,262	272,114
Total Turkey	9,508	103,670	16,788	60,217	507,465
Ducks	20	5	39	151	6,126
Total Poultry	136,808	306,468	21,167	109,109	1,294,864
Frozen Fruit					
Apples	162	818	40	11,093	78,222
Blueberries	41	293	110	8,191	26,785
Cherries, Tart (RTP)		60	2,329	1,083	47,806
Cherries, Sweet		39	3	1,926	4,225
Peaches	15	235	83	7,780	21,848
Raspberries, Red	65	355	27	32,062	36,572
Strawberries, Total	1,284	31,237	301	335,142	382,403
Other Frozen Fruit	134	13,419	2,485	77,717	224,001

See footnote(s) at end of table.

--continued

**Stocks in Cold Storage: By Commodity, Region,
and United States, June 30, 2006, Revised**

Commodity	New England	Middle Atlantic	East North Central	West North Central	South Atlantic
	<i>1,000 Pounds</i>	<i>1,000 Pounds</i>	<i>1,000 Pounds</i>	<i>1,000 Pounds</i>	<i>1,000 Pounds</i>
Frozen Juice					
Orange Juice Conc. ²	12		945	53	1,061,686
Other Juice Concentrate	3,666	29,929	26,508	2,115	120,497
Total Frozen Juice	3,678	29,929	27,453	2,168	1,173,232
Frozen Vegetables ³					
Asparagus		1,022	6,747	4	100
Limas, Fordhook		683	801	72	250
Limas, Baby		3,846	1,974	1,153	2,919
Green Beans, Reg. Cut		7,367	12,339	2,348	1,520
Green Beans, Fr. Style		2,921	1,272	264	220
Broccoli, Spears		7,487	5,988	60	3,101
Broccoli, Chopped & Cut		9,205	6,155	1,046	3,765
Brussels Sprouts		2,133	953	41	366
Carrots, Diced		7,787	15,196	3,099	440
Carrots, Other		9,902	12,455	1,745	1,027
Cauliflower		2,281	2,083	703	719
Corn, Cut		14,607	32,490	14,336	5,129
Corn, Cob		4,821	11,880	10,009	2,702
Mixed Vegetables		3,990	9,419	532	2,324
Okra		1,592	269	4,575	4,411
Onion Rings		171	3,606	763	1,922
Onions, Other		3,108	2,552	319	3,629
Blackeye Peas		1,498	106	18	1,832
Green Peas		29,628	17,586	9,900	10,112
Peas & Carrots Mixed		1,063	742	7	152
Spinach		16,139	6,939	182	4,750
Squash, Summer/Zucchini		5,071	18,260	1	727
Southern Greens		4,255	153	1	1,933
Other Vegetables		29,209	42,016	5,895	17,337
Total Vegetables		169,786	211,981	57,073	71,387
Potatoes					
French Fries	34,998	18,915	67,200	109,820	20,404
Other Frozen	7,726	8,203	34,114	8,453	2,381
Total Potatoes	42,724	27,118	101,314	118,273	22,785
Meat					
Frozen Beef					
Boneless ⁴	1,410	48,000	38,383	114,918	32,532
Beef Cuts ⁵	236	1,015	2,890	14,624	2,384
Total Beef	1,646	49,015	41,273	129,542	34,916
Frozen Pork					
Ribs ⁶	336	1,793	15,912	24,026	7,501
Trimming ⁷		502	7,918	16,845	1,006
Other ⁸	2,946	342	24,988	34,938	8,976
Other					
Veal		1,336	1,256	1	52
Lamb & Mutton		5,787	1,326	73	124
Total Other Meat		7,123	2,582	74	176

See footnote(s) at end of table.

--continued

**Stocks in Cold Storage: By Commodity, Region,
and United States, June 30, 2006, Revised, (continued)**

Commodity	East South Central	West South Central	Mountain	Pacific	US Total
	<i>1,000 Pounds</i>	<i>1,000 Pounds</i>	<i>1,000 Pounds</i>	<i>1,000 Pounds</i>	<i>1,000 Pounds</i>
Frozen Juice					
Orange Juice Concentrate	20	2,602	1,204	37,628	1,104,150
Other Juice Concentrate	67	13,889	2,109	84,169	282,949
Total Frozen Juice	87	16,491	3,313	121,797	1,387,099
Frozen Vegetables ³					
Asparagus		312	9	3,735	11,929
Limas, Fordhook		56		506	2,368
Limas, Baby		520	8	11,431	21,851
Green Beans, Reg. Cut		826	55	29,922	54,377
Green Beans, Fr. Style		139	12	3,560	8,388
Broccoli, Spears		11,918	10	4,135	32,699
Broccoli, Chopped & Cut		19,089	170	22,339	61,769
Brussels Sprouts		479	4	6,267	10,243
Carrots, Diced		891	36	37,091	64,540
Carrots, Other		10,858	96	61,445	97,528
Cauliflower		3,759	152	8,997	18,694
Corn, Cut		1,748	2,914	117,332	188,556
Corn, Cob		1,697	382	40,247	71,738
Mixed Vegetables		8,313	1,370	24,908	50,856
Okra		14,919		597	26,363
Onion Rings		340	518	212	7,532
Onions, Other		1,148	13,780	13,656	38,192
Blackeye Peas		400		226	4,080
Green Peas		3,918	3,102	148,267	222,513
Peas & Carrots Mixed		148	25	3,285	5,422
Spinach		14,671	18	64,908	107,607
Squash, Summer/Zucchini		7,366	196	19,083	50,704
Southern Greens		9,983	11	1,210	17,546
Other Vegetables		23,121	10,575	110,238	238,391
Total Vegetables		136,619	33,443	733,597	1,413,886
Potatoes					
French Fries	6,667	16,635	180,420	422,341	877,400
Other Frozen	2,228	24,859	57,884	84,862	230,710
Total Potatoes	8,895	41,494	238,304	507,203	1,108,110
Meat					
Frozen Beef					
Boneless ⁴	6,101	94,927	9,409	48,644	394,324
Beef Cuts ⁵	1,505	6,647	8,547	4,620	42,468
Total Beef	7,606	101,574	17,956	53,264	436,792
Frozen Pork					
Ribs ⁶	1,928	2,395	164	1,081	55,136
Trimming ⁷	501	2,940	84	1,261	31,057
Other ⁸	2,085	1,936	269	1,621	78,101
Other					
Veal		512		856	4,013
Lamb & Mutton	4	414	55	2,168	9,951
Total Other Meat	4	926	55	3,024	13,964

¹ East North Central combined with South Atlantic. Mountain and West North Central combined with West South Central.

² Middle Atlantic combined with South Atlantic.

³ New England combined with Middle Atlantic. East South Central combined with South Atlantic.

⁴ Includes all boxed boneless beef, such as ground beef, roasts, steaks, loins, strips, rounds, trimmings, etc. Variety meats (edible offal), such as tongues, livers, hearts, kidneys, and other organs removed from slaughtered beef, are included as miscellaneous freezer stocks.

⁵ Includes all boxed primal beef cuts, bone-in.

⁶ Includes spare ribs and back ribs.

⁷ Includes 42% regular trimmings, 72% special trimmings, boneless picnic meat, jowls, neckbone trimmings, blade, cheek, head, and shank meat, etc. Packaged bacon, sausage, and processed items, such as hot dogs and luncheon meats, are included in miscellaneous cooler or freezer stocks.

⁸ Includes ears, tails, feet, neckbones and snouts.

**Stocks in Cold Storage: By Commodity, Region,
and United States, July 31, 2006**

Commodity	New England	Middle Atlantic	East North Central	West North Central	South Atlantic
	<i>1,000 Pounds</i>	<i>1,000 Pounds</i>	<i>1,000 Pounds</i>	<i>1,000 Pounds</i>	<i>1,000 Pounds</i>
Total Fresh Apples		36,792			8
Nuts					
Shelled					
Peanuts		241	71	18	198,893
Pecans ¹	18	186			9,067
In-Shell					
Pecans ¹					14,575
Dairy Products					
Natural Cheese					
American, Total	35,987	54,641	238,645	113,952	5,633
Other Natural Cheese	42	16,858	153,290	61,647	177
Frozen Poultry					
Chicken					
Broilers, Fryers					
Roasters (Whole)		1,512	318	1,322	6,114
Hens, Mature Chickens	4	558	77	456	5,351
Other	2,488	34,522	19,995	39,736	275,191
Total Chicken	2,492	36,592	20,390	41,514	286,656
Turkeys					
Whole Turkeys	4,132	23,975	11,070	68,424	34,955
Other Turkey	771	4,857	18,394	59,656	97,599
Total Turkey	4,903	28,832	29,464	128,080	132,554
Ducks		137	7,097	5	35
Total Poultry	7,395	65,561	56,951	169,599	419,245
Frozen Fruit					
Apples	132	14,775	45,395	131	949
Blueberries	4,007	7,129	23,511	1,090	3,565
Cherries, Tart (RTP)	51	4,284	122,153	208	
Cherries, Sweet		248	11,141	215	3
Peaches	32	1,825	4,327	6,165	75
Raspberries, Red	139	1,814	2,849	422	22
Strawberries, Total	107	5,099	8,601	538	1,364
Other Frozen Fruit	1,353	6,356	99,572	3,787	1,013

See footnote(s) at end of table.

--continued

**Stocks in Cold Storage: By Commodity, Region,
and United States, July 31, 2006 (continued)**

Commodity	East South Central	West South Central	Mountain	Pacific	US Total
	<i>1,000 Pounds</i>	<i>1,000 Pounds</i>	<i>1,000 Pounds</i>	<i>1,000 Pounds</i>	<i>1,000 Pounds</i>
Total Fresh Apples			8	249,634	286,442
Nuts					
Shelled					
Peanuts	14,797	88,085	62	150	302,317
Pecans ¹	1,167	32,789		167	43,394
In-Shell					
Pecans ¹	1,516	86,359			102,450
Dairy Products					
Natural Cheese					
American, Total	270	5,367	49,888	94,731	599,114
Other Natural Cheese	3,176	825	403	15,263	251,681
Frozen Poultry					
Chicken					
Broilers, Fryers					
Roasters (Whole)	2,703	5,283	246	2,602	20,100
Hens, Mature Chickens	451	1,460	4	141	8,502
Other	120,283	186,372	2,470	43,632	724,689
Total Chicken	123,437	193,115	2,720	46,375	753,291
Turkeys					
Whole Turkeys	7,420	65,845	10,831	20,427	247,079
Other Turkey	3,319	34,779	6,276	38,294	263,945
Total Turkey	10,739	100,624	17,107	58,721	511,024
Ducks	25	6	38	167	7,510
Total Poultry	134,201	293,745	19,865	105,263	1,271,825
Frozen Fruit					
Apples	139	686	113	9,370	71,690
Blueberries	96	232	196	22,180	62,006
Cherries, Tart (RTP)		80	6,742	4,716	138,234
Cherries, Sweet	2	41	11	5,107	16,768
Peaches	14	1,005	79	7,677	21,199
Raspberries, Red	160	369	55	82,979	88,809
Strawberries, Total	1,364	30,254	239	355,346	402,912
Other Frozen Fruit	135	14,305	42	83,200	209,763

See footnote(s) at end of table.

--continued

**Stocks in Cold Storage: By Commodity, Region,
and United States, July 31, 2006**

Commodity	New England	Middle Atlantic	East North Central	West North Central	South Atlantic
	<i>1,000 Pounds</i>	<i>1,000 Pounds</i>	<i>1,000 Pounds</i>	<i>1,000 Pounds</i>	<i>1,000 Pounds</i>
Frozen Juice					
Orange Juice Conc. ²	15		883	114	963,665
Other Juice Concentrate	3,664	27,121	22,006	1,971	119,938
Total Frozen Juice	3,679	27,121	22,889	2,085	1,075,404
Frozen Vegetables ³					
Asparagus		1,065	6,465	10	117
Limas, Fordhook		596	415	54	210
Limas, Baby		3,429	1,591	969	2,466
Green Beans, Reg. Cut		14,796	32,006	2,422	3,098
Green Beans, Fr. Style		6,178	4,781	460	344
Broccoli, Spears		6,763	5,544	57	3,207
Broccoli, Chopped & Cut		8,992	6,896	983	3,607
Brussels Sprouts		1,646	874	29	314
Carrots, Diced		6,555	12,167	2,505	348
Carrots, Other		9,349	10,385	1,653	888
Cauliflower		2,648	2,597	676	844
Corn, Cut		13,654	25,824	11,990	5,759
Corn, Cob		3,802	8,973	7,816	3,150
Mixed Vegetables		3,915	10,870	263	2,213
Okra		1,779	304	7,909	4,769
Onion Rings		147	3,186	974	1,904
Onions, Other		3,311	2,396	429	3,474
Blackeye Peas		1,273	104	8	1,452
Green Peas		54,152	42,553	25,946	15,049
Peas & Carrots Mixed		1,050	878	5	228
Spinach		16,329	6,801	178	4,943
Squash, Summer/Zucchini		5,059	18,745	1	915
Southern Greens		4,310	125	1	2,263
Other Vegetables		32,457	39,011	4,428	18,517
Total Vegetables		202,687	243,491	69,766	61,634
Potatoes					
French Fries	36,455	17,538	54,255	83,224	17,246
Other Frozen	7,084	8,646	29,872	7,950	2,234
Total Potatoes	43,539	26,184	84,127	91,174	19,480
Meat					
Frozen Beef					
Boneless ⁴	1,509	52,113	44,137	126,156	32,382
Beef Cuts ⁵	208	1,206	3,307	15,000	2,030
Total Beef	1,717	53,319	47,444	141,156	34,412
Frozen Pork					
Ribs ⁶	351	1,612	14,157	22,431	6,179
Trimming ⁷		599	9,450	17,442	1,156
Other ⁸	5,993	428	25,057	40,764	8,635
Other					
Veal		1,320	333	22	98
Lamb & Mutton		5,891	1,439	36	65
Total Other Meat		7,211	1,772	58	163

See footnote(s) at end of table.

--continued

**Stocks in Cold Storage: By Commodity, Region,
and United States, July 31, 2006 (continued)**

Commodity	East South Central	West South Central	Mountain	Pacific	US Total
	<i>1,000 Pounds</i>	<i>1,000 Pounds</i>	<i>1,000 Pounds</i>	<i>1,000 Pounds</i>	<i>1,000 Pounds</i>
Frozen Juice					
Orange Juice Concentrate	18	2,474	1,090	33,998	1,002,257
Other Juice Concentrate	64	13,067	2,757	78,247	268,835
Total Frozen Juice	82	15,541	3,847	112,245	1,271,092
Frozen Vegetables ³					
Asparagus		356	9	3,854	11,876
Limas, Fordhook		46		698	2,019
Limas, Baby		398	7	9,472	18,332
Green Beans, Reg. Cut		1,059	181	61,823	115,385
Green Beans, Fr. Style		98	9	7,906	19,776
Broccoli, Spears		15,158	7	3,325	34,061
Broccoli, Chopped & Cut		17,871	136	26,498	64,983
Brussels Sprouts		350	4	5,096	8,313
Carrots, Diced		940	29	29,774	52,318
Carrots, Other		10,353	149	58,644	91,421
Cauliflower		3,398	139	10,848	21,150
Corn, Cut		1,437	1,717	120,560	180,941
Corn, Cob		1,676	342	46,032	71,791
Mixed Vegetables		8,943	1,370	23,097	50,671
Okra		20,419		578	35,758
Onion Rings		757	518	177	7,663
Onions, Other		1,747	13,705	10,750	35,812
Blackeye Peas		565		173	3,575
Green Peas		4,955	2,854	245,914	391,423
Peas & Carrots Mixed		124	27	4,502	6,814
Spinach		14,065	13	57,986	100,315
Squash, Summer/Zucchini		7,437	153	23,352	55,662
Southern Greens		9,175	11	1,668	17,553
Other Vegetables		21,703	11,329	120,502	247,947
Total Vegetables		143,030	32,709	873,229	1,645,559
Potatoes					
French Fries	5,715	17,054	162,321	381,052	774,860
Other Frozen	2,526	22,450	59,886	81,154	221,802
Total Potatoes	8,241	39,504	222,207	462,206	996,662
Meat					
Frozen Beef					
Boneless ⁴	6,505	95,891	9,212	53,204	421,109
Beef Cuts ⁵	2,132	7,150	9,515	5,144	45,692
Total Beef	8,637	103,041	18,727	58,348	466,801
Frozen Pork					
Ribs ⁶	1,903	5,118	153	1,146	53,050
Trimming ⁷	532	2,987	85	1,338	33,589
Other ⁸	2,306	1,822	262	2,090	87,357
Other					
Veal		391		680	2,844
Lamb & Mutton	4	584	56	2,258	10,333
Total Other Meat	4	975	56	2,938	13,177

¹ East North Central combined with South Atlantic. Mountain and West North Central Combined with West South Central.

² Middle Atlantic combined with South Atlantic.

³ New England combined with Middle Atlantic. East South Central combined with South Atlantic.

⁴ Includes all boxed boneless beef, such as ground beef, roasts, steaks, loins, strips, rounds, trimmings, etc. Variety meats (edible offal), such as tongues, livers, hearts, kidneys, and other organs removed from slaughtered beef, are included as miscellaneous freezer stocks.

⁵ Includes all boxed primal beef cuts, bone-in.

⁶ Includes spare ribs and back ribs.

⁷ Includes 42% regular trimmings, 72% special trimmings, boneless picnic meat, jowls, neckbone trimmings, blade, cheek, head, and shank meat, etc. Packaged bacon, sausage, and processed items, such as hot dogs and luncheon meats, are included in miscellaneous cooler or freezer stocks.

⁸ Includes ears, tails, feet, neckbones and snouts.

Cold Storage Regions



Reliability of Cold Storage Estimates

Survey Procedures: Questionnaires are mailed about the 24th of each month to all operators on the list of approximately 1,400 public and private cold storage warehouses. In addition, apple data are obtained from special surveys and other sources (State Departments of Agriculture, U.S. Apple Association, etc.). All survey data represent stocks as of the end of the month.

Data are collected from warehouses artificially cooled to a temperature of 50 degrees Fahrenheit or lower, and whose food products are normally stored for 30 days or more. All food items in these facilities are reported regardless of the number of days stored at the time of the report. Also included are specialized storage facilities meeting the 30 day requirement, such as fruit houses, dairy manufacturing plants, frozen fruit, fruit juice, and vegetable processors, and poultry and meat packing plants. Excluded are stocks in space maintained by wholesalers, jobbers, distributors, chain stores, locker plants containing individual lockers, meat packer branch houses, and frozen food processors whose entire inventories are turned over more than once a month.

Estimating Procedures: Data for reporting firms are added to estimates for non-reporting firms to obtain regional and National totals. Estimates for non-reporting firms are obtained by multiplying the previous month's figure by a percent change from the previous month. The percent change is calculated for each item from totals of the current and previous month summed from firms that reported both months.

Revision Policy: Data are revised the following month based on late reports or corrected data. Final figures are published in the annual summary in February of the following year.

Reliability: Reports are received from 900 firms each month which represent about 70 percent of the total capacity. Firms that are not on the list or firms who have never reported are not represented in the data. Monthly data can vary due to different firms reporting month to month. Survey data are also subject to non-sampling errors such as omissions and mistakes in reporting and in processing the data. While these errors cannot be measured directly, they are minimized by carefully reviewing all reported data for consistency and reasonableness.

Information Contacts

Listed below are the commodity specialists in the Livestock Branch of the National Agricultural Statistics Service to contact for additional information.

Dan Kerestes, Chief, Livestock Branch	(202) 720-3570
Darin Jantzi, Head, Poultry and Specialty Commodities Section	(202) 720-3570
David Colwell - Cold Storage	(202) 720-8784
Fleming Gibson - Egg Products, Poultry Slaughter, Catfish Processing, Mink	(202) 690-3237
John Lange - Turkeys Raised, Turkey Hatchery, Catfish Production, Trout Production, Census of Aquaculture	(202) 720-0585
Sharyn Lavender - Layers, Eggs, Broiler Hatchery, Chicken Hatchery, Honey	(202) 720-3244

ACCESS TO REPORTS!!

For your convenience, there are several ways to obtain NASS reports, data products, and services:

INTERNET ACCESS

All NASS reports are available free of charge on the worldwide Internet. For access, connect to the Internet and go to the NASS Home Page at: www.nass.usda.gov.

E-MAIL SUBSCRIPTION

All NASS reports are available by subscription free of charge direct to your e-mail address. Starting with the NASS Home Page at www.nass.usda.gov, under the right navigation, *Receive reports by Email*, click on **National** or **State**. Follow the instructions on the screen.

PRINTED REPORTS OR DATA PRODUCTS

CALL OUR TOLL-FREE ORDER DESK: 800-999-6779 (U.S. and Canada)
Other areas, please call 703-605-6220 FAX: 703-605-6900
(Visa, MasterCard, check, or money order acceptable for payment.)

ASSISTANCE

For **assistance** with general agricultural statistics or further information about NASS or its products or services, contact the **Agricultural Statistics Hotline** at **800-727-9540**, 7:30 a.m. to 4:00 p.m. ET, or e-mail: nass@nass.usda.gov.

The U.S. Department of Agriculture (USDA) prohibits discrimination in all its programs and activities on the basis of race, color, national origin, age, disability, and where applicable, sex, marital status, familial status, parental status, religion, sexual orientation, genetic information, political beliefs, reprisal, or because all or part of an individual's income is derived from any public assistance program. (Not all prohibited bases apply to all programs.) Persons with disabilities who require alternative means for communication of program information (Braille, large print, audiotape, etc.) should contact USDA's TARGET Center at (202) 720-2600 (voice and TDD).

To file a complaint of discrimination, write to USDA, Director, Office of Civil Rights, 1400 Independence Avenue, S.W., Washington, D.C. 20250-9410, or call (800) 795-3272 (voice) or (202) 720-6382 (TDD). USDA is an equal opportunity provider and employer.