



NASS

FACT FINDERS FOR AGRICULTURE
UNITED STATES DEPARTMENT OF AGRICULTURE

Washington, D.C.

Cold Storage

Released September 21, 2006, by the National Agricultural Statistics Service (NASS), Agricultural Statistics Board, U.S. Department of Agriculture. For information on *Cold Storage* call David Colwell at (202) 720-8784, office hours 7:30 a.m. to 4:00 p.m. ET.

Highlights

Frozen food stocks in refrigerated warehouses on August 31, 2006 were greater than year earlier levels for butter, beef, eggs, cheese, and chicken.

Butter stocks were down 19 percent from last month, but up 24 percent from a year ago.

Total red meat supplies in freezers were down 1 percent from last month, but up 4 percent from last year. Frozen pork supplies were down 2 percent from both last month and the previous year. Stocks of pork bellies were down 63 percent from last month and down 37 percent from last year.

Total frozen poultry supplies on August 31, 2006 were down 2 percent from the previous month and down 1 percent from a year ago. Total stocks of chicken were down 2 percent from the previous month, but up 1 percent from last year. Total pounds of turkey in freezers were down 2 percent from last month and down 4 percent from August 31, 2005.

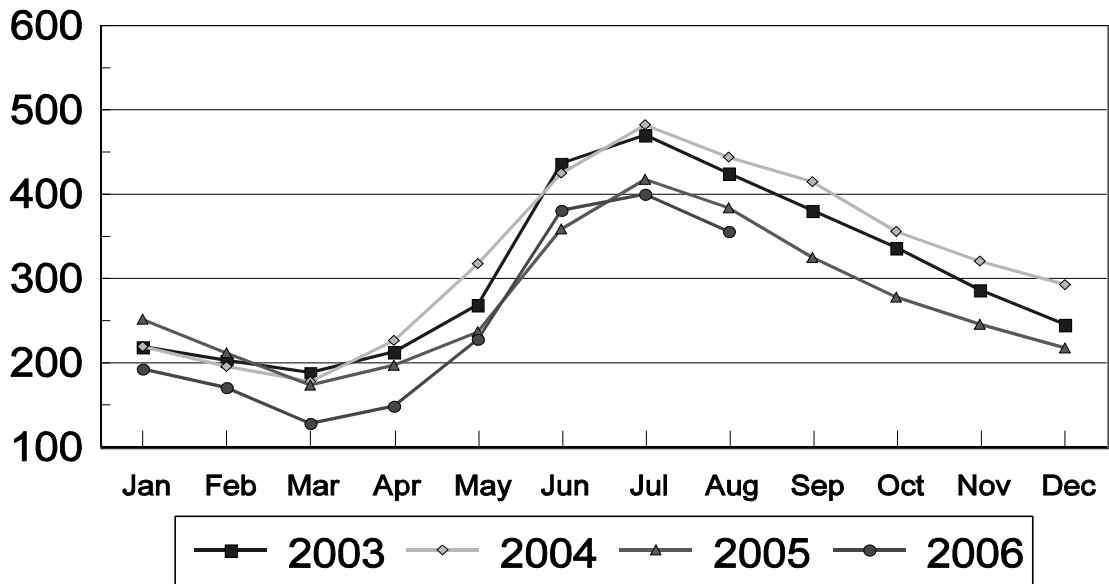
This page is intentionally blank.

Contents

	Page
Stocks in Cold Storage By Commodity	
United States, August 2006	1
Region, and United States, July 31, 2006	5
Region, and United States, August 31, 2006	9
Reliability Statement	14
Information Contacts	14

Frozen Strawberries - United States Cold Storage Stocks, 2003-2006

Million Pounds



**Stocks in Cold Storage: By Commodity,
United States, August 2006**

Commodity	Stocks in All Warehouses			Percent of		Public Warehouse Stocks
	Aug 31, 2005	Jul 31, 2006 ¹	Aug 31, 2006	Aug 2005	Jul 2006	Aug 31, 2006
	<i>1,000 Pounds</i>	<i>1,000 Pounds</i>	<i>1,000 Pounds</i>	<i>Percent</i>	<i>Percent</i>	<i>1,000 Lbs</i>
Fresh Fruit						
Apples						
Regular Storage	24,990	5,944	19,586	78	330	
Controlled Atmosphere	91,812	280,499	63,942	70	23	
Total	116,802	286,443	83,528	72	29	9,379
Pears						
Bartlett	72,173	104	80,223	111	77,138	
Other Varieties	1,408	1,807	1,328	94	73	
Total	73,581	1,911	81,551	111	4,267	7,128
Nuts						
Shelled						
Peanuts	272,468	302,316	321,693	118	106	
Pecans	31,241	43,302	43,163	138	100	
Other Shelled	84,355	100,663	80,870	96	80	
Total	388,064	446,281	445,726	115	100	163,554
In-Shell						
Peanuts	19,939	18,613	15,616	78	84	
Pecans ²	21,492	89,814	61,998	288	69	
Other In-Shell	7,656	8,357	7,421	97	89	
Total	49,087	116,784	85,035	173	73	31,590
Dairy Products						
Butter, Total	148,878	228,395	184,506	124	81	148,502
(Government Owned)	55	97	94	171	97	
Natural Cheese						
American, Total	582,015	603,592	577,327	99	96	
(Government Owned)	943	100	272	29	272	
Swiss	21,847	34,177	30,674	140	90	
Other Natural Cheese	209,065	254,876	243,118	116	95	
Total	812,927	892,645	851,119	105	95	458,556
Eggs, Frozen						
Whites	2,806	2,953	2,537	90	86	
Yolks	1,207	1,274	1,387	115	109	
Whole & Mixed	12,447	14,981	13,274	107	89	
Unclassified	3,478	4,388	4,048	116	92	
Total	19,938	23,596	21,246	107	90	20,353
Frozen Poultry						
Chicken						
Broilers, Fryers						
Roasters (Whole)	20,533	20,092	18,096	88	90	
Hens, Mature Chickens	1,665	10,510	12,719	764	121	
Breasts & Breast Meat	134,933	133,495	131,777	98	99	
Drumsticks	10,750	15,627	23,959	223	153	
Leg Quarters	89,182	60,810	73,108	82	120	
Legs	9,522	8,535	9,731	102	114	
Thigh & Thigh Quarters	8,177	10,214	10,091	123	99	
Thigh Meat	11,300	17,342	15,828	140	91	
Wings	42,078	38,355	37,132	88	97	
Paws and Feet	8,209	13,018	13,272	162	102	
Other	369,179	399,857	368,843	100	92	
Total Chicken	705,528	727,855	714,556	101	98	

See footnote(s) at end of table.

--continued

**Stocks in Cold Storage: By Commodity,
United States, August 2006**

Commodity	Stocks in All Warehouses			Percent of		Public Warehouse Stocks
	Aug 31, 2005	Jul 31, 2006 ¹	Aug 31, 2006	Aug 2005	Jul 2006	Aug 31, 2006
	<i>1,000 Pounds</i>	<i>1,000 Pounds</i>	<i>1,000 Pounds</i>	<i>Percent</i>	<i>Percent</i>	<i>1,000 Lbs</i>
Turkeys						
Toms (Whole Carcasses)	167,864	132,719	127,753	76	96	
Hens (Whole Carcasses)	128,574	114,353	115,605	90	101	
Whole Turkeys	296,438	247,072	243,358	82	98	
Other Turkey	226,682	265,151	257,188	113	97	
Total Turkey	523,120	512,223	500,546	96	98	370,094
Ducks	2,622	7,506	7,288	278	97	
Total Poultry	1,231,270	1,247,584	1,222,390	99	98	1,040,917
Frozen Fruit						
Apples	62,193	71,397	59,965	96	84	
Apricots	6,841	4,078	3,642	53	89	
Blackberries, Total	33,669	31,908	32,144	95	101	
IQF	22,214	21,165	19,797	89	94	
Pails and Tubs	5,436	5,601	7,448	137	133	
Barrels, 400 lbs net	5,713	5,082	4,902	86	96	
Concentrate	306	60	18	6	30	
Blueberries	111,198	62,220	125,501	113	202	
Boysenberries	2,496	2,704	2,534	102	94	
Cherries, Tart (RTP)	150,216	137,736	143,259	95	104	
Cherries, Tart (Juice)	4,364	4,912	5,849	134	119	
Cherries, Sweet	13,972	16,752	16,725	120	100	
Grapes	2,133	2,380	2,366	111	99	
Peaches	45,220	21,197	38,253	85	180	
Raspberries, Black	2,354	3,436	2,738	116	80	
Raspberries, Red, Total	76,319	85,911	78,941	103	92	
IQF	21,652	36,667	31,496	145	86	
Pails and Tubs	14,845	12,496	16,088	108	129	
Barrels, 400 lbs net	37,874	35,421	30,351	80	86	
Concentrate	1,948	1,328	1,140	59	86	
Strawberries, Total	384,593	400,725	357,153	93	89	
IQF and Poly	178,739	164,543	143,803	80	87	
Pails and Tubs	119,898	140,077	132,100	110	94	
Barrels and Drums	70,202	70,338	59,984	85	85	
Juice Stock	15,754	25,768	26,153	166	101	
Other Frozen Fruit	164,671	212,044	179,250	109	85	
Total	1,060,239	1,057,400	1,048,320	99	99	911,722
Frozen Juice						
Orange Juice Conc. ³	1,397,309	1,002,629	887,819	64	89	
(Gallon Equivalent)	141,199	101,317	89,715			
Other Juice Concentrate	249,875	268,989	247,460	99	92	
Total	1,647,184	1,271,618	1,135,279	69	89	169,559

See footnote(s) at end of table.

--continued

**Stocks in Cold Storage: By Commodity,
United States, August 2006**

Commodity	Stocks in All Warehouses			Percent of		Public Warehouse Stocks
	Aug 31, 2005	Jul 31, 2006 ¹	Aug 31, 2006	Aug 2005	Jul 2006	Aug 31, 2006
	<i>1,000 Pounds</i>	<i>1,000 Pounds</i>	<i>1,000 Pounds</i>	<i>Percent</i>	<i>Percent</i>	<i>1,000 Lbs</i>
Frozen Vegetables						
Asparagus	13,501	11,587	10,281	76	89	
Limas, Fordhook	7,575	2,019	3,416	45	169	
Limas, Baby	27,593	18,315	22,564	82	123	
Green Beans, Reg. Cut	203,449	122,147	199,798	98	164	
Green Beans, Fr. Style	26,560	22,482	32,945	124	147	
Broccoli, Spears	46,279	33,796	29,701	64	88	
Broccoli, Chopped & Cut	59,579	64,793	56,032	94	86	
Brussels Sprouts	10,819	8,313	6,132	57	74	
Carrots, Diced	50,575	51,642	45,863	91	89	
Carrots, Other	82,673	91,591	79,622	96	87	
Cauliflower	18,824	21,065	23,566	125	112	
Corn, Cut	366,371	180,971	386,023	105	213	
Corn, Cob	155,597	71,608	184,531	119	258	
Mixed Vegetables	52,889	50,604	59,253	112	117	
Okra	36,894	35,740	40,099	109	112	
Onion Rings	4,422	7,661	6,812	154	89	
Onions, Other	40,412	36,046	40,236	100	112	
Blackeye Peas	2,712	3,587	5,348	197	149	
Green Peas	338,130	389,734	397,855	118	102	
Peas & Carrots Mixed	6,003	6,900	7,830	130	113	
Spinach	63,870	101,045	88,817	139	88	
Squash, Summer/Zucchini	41,600	55,613	60,202	145	108	
Southern Greens	15,315	17,542	18,474	121	105	
Other Vegetables	332,690	247,361	262,515	79	106	
Total	2,004,332	1,652,162	2,067,915	103	125	1,431,174
Potatoes						
French Fries	893,612	775,111	767,469	86	99	
Other Frozen	227,719	221,294	199,621	88	90	
Total	1,121,331	996,405	967,090	86	97	724,782

See footnote(s) at end of table.

--continued

**Stocks in Cold Storage: By Commodity,
United States, August 2006**

Commodity	Stocks in All Warehouses			Percent of		Public Warehouse Stocks
	Aug 31, 2005	Jul 31, 2006 ¹	Aug 31, 2006	Aug 2005	Jul 2006	Aug 31, 2006
	<i>1,000 Pounds</i>	<i>1,000 Pounds</i>	<i>1,000 Pounds</i>	<i>Percent</i>	<i>Percent</i>	<i>1,000 Lbs</i>
Meat						
Frozen Beef						
Boneless ⁴	367,027	420,377	411,745	112	98	
Beef Cuts ⁵	43,565	45,662	52,787	121	116	
Total	410,592	466,039	464,532	113	100	461,942
(Government Owned)	2,470	6,116	3,811	154	62	
Frozen Pork						
Picnics, Bone-in	8,163	7,549	8,557	105	113	
Hams, Total	107,865	79,861	95,818	89	120	91,335
Bone-in	64,647	53,050	64,964	100	122	62,281
Boneless ⁶	43,218	26,811	30,854	71	115	29,054
Bellies	22,149	37,328	13,933	63	37	
Loins, Total	27,002	24,915	24,736	92	99	22,590
Bone-in	14,788	11,184	11,953	81	107	
Boneless ⁷	12,214	13,731	12,783	105	93	
Ribs ⁸	48,096	53,299	49,852	104	94	
Butts	5,931	8,460	7,902	133	93	
Trimmings ⁹	32,719	33,575	32,649	100	97	
Other ¹⁰	74,698	87,533	89,993	120	103	
Variety Meats ¹¹	32,543	37,086	35,833	110	97	
Unclassified ¹²	55,302	43,848	45,619	82	104	
Total	414,468	413,454	404,892	98	98	369,621
(Government Owned)	232	888	1,313	566	148	
Other						
Veal	3,561	3,298	2,756	77	84	
Lamb & Mutton	11,790	10,360	10,583	90	102	
Total	15,351	13,658	13,339	87	98	13,298
Canned						
Canned Hams	4,224	1,655	1,592	38	96	
Other Canned Meat	4,259	3,768	2,561	60	68	
Total	8,483	5,423	4,153	49	77	4,125
Total	848,894	898,574	886,916	104	99	848,986
Miscellaneous						
Cooler	570,700	609,691	696,564	122	114	329,376
Freezer	2,186,531	2,089,481	2,073,185	95	99	2,017,113
Total	2,757,231	2,699,172	2,769,749	100	103	2,346,489
Commodities						
Stored in Coolers	2,031,632	2,380,227	2,264,247	111	95	1,211,348
Stored in Freezers	10,248,126	9,438,743	9,586,123	94	102	7,308,983
Total	12,279,758	11,818,970	11,850,370	97	100	8,520,331

¹ Revised.

² Duplication of in-shell pecan data was found. August 2005 and July 2006 revisions reflect data available at this time. Revisions to prior months will be made and published as soon as all data are made available.

³ Adjusted to 42.0 degrees Brix equivalent (9.896 pounds per gallon).

⁴ Includes all boxed boneless beef, such as ground beef, roasts, steaks, loins, strips, rounds, trimmings, etc. Variety meats (edible offal), such as tongues, livers, hearts, kidneys, and other organs removed from slaughtered beef, are included as miscellaneous freezer stocks.

⁵ Includes all boxed primal beef cuts, bone-in.

⁶ Includes full ham, bone removed and individual muscles separated.

⁷ Includes pork tenderloins.

⁸ Includes spareribs and backribs.

⁹ Includes 42% regular trimmings, 72% special trimmings, boneless picnic meat, jowls, neckbone trimmings, blade, cheek, head, and shank meat, etc. Packaged bacon, sausage, and processed items, such as hot dogs and luncheon meats, are included in miscellaneous cooler or freezer stocks.

¹⁰ Includes ears, tails, feet, neckbones and snouts.

¹¹ Includes tongues, kidneys, livers, stomachs, hearts, chitterlings, salivary glands, and other organs removed from slaughtered hogs.

¹² Includes product unable to be classified elsewhere in this report.

**Stocks in Cold Storage: By Commodity, Region,
and United States, July 31, 2006, Revised**

Commodity	New England	Middle Atlantic	East North Central	West North Central	South Atlantic
	<i>1,000 Pounds</i>	<i>1,000 Pounds</i>	<i>1,000 Pounds</i>	<i>1,000 Pounds</i>	<i>1,000 Pounds</i>
Total Fresh Apples		36,792			8
Nuts					
Shelled					
Peanuts		241	71	17	198,893
Pecans ¹	18	186			8,976
In-Shell					
Pecans ^{1 2}					14,591
Dairy Products					
Natural Cheese					
American, Total	37,316	54,361	237,028	120,188	5,633
Other Natural Cheese	42	16,858	153,714	62,646	177
Frozen Poultry					
Chicken					
Broilers, Fryers					
Roasters (Whole)		1,512	318	1,318	6,114
Hens, Mature Chickens	4	558	77	456	7,351
Other	2,488	34,522	20,020	39,732	247,829
Total Chicken	2,492	36,592	20,415	41,506	261,294
Turkeys					
Whole Turkeys	4,132	23,975	11,070	68,424	34,955
Other Turkey	771	4,857	19,303	59,655	97,879
Total Turkey	4,903	28,832	30,373	128,079	132,834
Ducks		137	7,097	5	31
Total Poultry	7,395	65,561	57,885	169,590	394,159
Frozen Fruit					
Apples	132	14,768	45,401	132	949
Blueberries	4,007	6,243	23,387	1,090	3,565
Cherries, Tart (RTP)	51	4,216	122,154	208	
Cherries, Sweet		233	11,095	215	3
Peaches	32	1,824	4,352	6,165	75
Raspberries, Red	139	1,749	2,735	422	11
Strawberries, Total	107	5,098	8,713	537	1,183
Other Frozen Fruit	1,353	6,450	99,594	3,787	1,016

See footnote(s) at end of table.

--continued

**Stocks in Cold Storage: By Commodity, Region,
and United States, July 31, 2006, Revised, (continued)**

Commodity	East South Central	West South Central	Mountain	Pacific	US Total
	<i>1,000 Pounds</i>	<i>1,000 Pounds</i>	<i>1,000 Pounds</i>	<i>1,000 Pounds</i>	<i>1,000 Pounds</i>
Total Fresh Apples			8	249,635	286,443
Nuts					
Shelled					
Peanuts	14,797	88,085	62	150	302,316
Pecans ¹	1,167	32,788		167	43,302
In-Shell					
Pecans ¹	1,516	73,707			89,814
Dairy Products					
Natural Cheese					
American, Total	272	5,367	49,872	93,555	603,592
Other Natural Cheese	3,173	825	3,998	13,443	254,876
Frozen Poultry					
Chicken					
Broilers, Fryers					
Roasters (Whole)	2,705	5,283	240	2,602	20,092
Hens, Mature Chickens	451	1,460	12	141	10,510
Other	120,292	186,372	2,382	43,616	697,253
Total Chicken	123,448	193,115	2,634	46,359	727,855
Turkeys					
Whole Turkeys	7,420	65,845	10,824	20,427	247,072
Other Turkey	3,330	34,779	6,282	38,295	265,151
Total Turkey	10,750	100,624	17,106	58,722	512,223
Ducks	25	6	38	167	7,506
Total Poultry	134,223	293,745	19,778	105,248	1,247,584
Frozen Fruit					
Apples	139	686	104	9,086	71,397
Blueberries	96	232	67	23,533	62,220
Cherries, Tart (RTP)		80	6,305	4,722	137,736
Cherries, Sweet	2	41	11	5,152	16,752
Peaches	14	1,005	35	7,695	21,197
Raspberries, Red	160	369	44	80,282	85,911
Strawberries, Total	1,364	30,254	272	353,197	400,725
Other Frozen Fruit	135	14,305	51	85,353	212,044

See footnote(s) at end of table.

--continued

**Stocks in Cold Storage: By Commodity, Region,
and United States, July 31, 2006, Revised**

Commodity	New England	Middle Atlantic	East North Central	West North Central	South Atlantic
	<i>1,000 Pounds</i>	<i>1,000 Pounds</i>	<i>1,000 Pounds</i>	<i>1,000 Pounds</i>	<i>1,000 Pounds</i>
Frozen Juice					
Orange Juice Conc. ³	15		975	114	963,901
Other Juice Concentrate	3,664	27,125	22,081	1,970	119,979
Total Frozen Juice	3,679	27,125	23,056	2,084	1,075,686
Frozen Vegetables ⁴					
Asparagus		1,065	6,465	10	114
Limas, Fordhook		596	415	54	210
Limas, Baby		3,429	1,592	969	2,447
Green Beans, Reg. Cut		14,796	31,998	2,421	2,853
Green Beans, Fr. Style		6,178	4,778	459	273
Broccoli, Spears		6,763	5,544	58	2,941
Broccoli, Chopped & Cut		8,992	6,896	978	3,456
Brussels Sprouts		1,646	874	29	314
Carrots, Diced		6,555	12,167	2,505	348
Carrots, Other		9,349	10,385	1,654	890
Cauliflower		2,648	2,597	673	764
Corn, Cut		13,654	25,824	11,995	5,771
Corn, Cob		3,802	8,972	7,816	3,166
Mixed Vegetables		3,915	10,867	263	2,237
Okra		1,779	332	7,909	4,723
Onion Rings		147	3,186	972	1,904
Onions, Other		3,311	2,390	429	3,629
Blackeye Peas		1,273	116	8	1,452
Green Peas		54,152	42,540	25,945	15,039
Peas & Carrots Mixed		1,050	878	5	228
Spinach		16,329	6,777	178	5,066
Squash, Summer/Zucchini		5,059	18,745	1	905
Southern Greens		4,310	125	1	2,263
Other Vegetables		32,459	39,019	4,428	18,134
Total Vegetables		203,257	243,482	69,760	79,127
Potatoes					
French Fries	36,455	17,538	54,255	83,221	17,246
Other Frozen	7,084	8,646	29,872	7,970	2,234
Total Potatoes	43,539	26,184	84,127	91,191	19,480
Meat					
Frozen Beef					
Boneless ⁵	1,509	52,113	44,133	126,156	32,285
Beef Cuts ⁶	208	1,206	3,307	15,000	2,030
Total Beef	1,717	53,319	47,440	141,156	34,315
Frozen Pork					
Ribs ⁷	351	1,612	14,157	22,433	6,179
Trimming ⁸		599	9,450	17,442	1,156
Other ⁹	5,993	428	24,942	40,764	8,838
Other					
Veal		1,320	787	22	98
Lamb & Mutton		5,891	1,460	36	65
Total Other Meat		7,211	2,247	58	163

See footnote(s) at end of table.

--continued

**Stocks in Cold Storage: By Commodity, Region,
and United States, July 31, 2006, Revised, (continued)**

Commodity	East South Central	West South Central	Mountain	Pacific	US Total
	<i>1,000 Pounds</i>	<i>1,000 Pounds</i>	<i>1,000 Pounds</i>	<i>1,000 Pounds</i>	<i>1,000 Pounds</i>
Frozen Juice					
Orange Juice Conc. ³	18	2,474	1,134	33,998	1,002,629
Other Juice Concentrate	64	13,067	2,753	78,286	268,989
Total Frozen Juice	82	15,541	3,887	112,284	1,271,618
Frozen Vegetables ⁴					
Asparagus		356	9	3,568	11,587
Limas, Fordhook		46		698	2,019
Limas, Baby		398	7	9,473	18,315
Green Beans, Reg. Cut		1,059	179	68,841	122,147
Green Beans, Fr. Style		98	6	10,690	22,482
Broccoli, Spears		15,158	7	3,325	33,796
Broccoli, Chopped & Cut		17,871	136	26,464	64,793
Brussels Sprouts		350	4	5,096	8,313
Carrots, Diced		940	46	29,081	51,642
Carrots, Other		10,353	149	58,811	91,591
Cauliflower		3,398	139	10,846	21,065
Corn, Cut		1,437	1,724	120,566	180,971
Corn, Cob		1,676	343	45,833	71,608
Mixed Vegetables		8,943	1,370	23,009	50,604
Okra		20,419		578	35,740
Onion Rings		757	518	177	7,661
Onions, Other		1,747	13,737	10,803	36,046
Blackeye Peas		565		173	3,587
Green Peas		4,955	2,854	244,249	389,734
Peas & Carrots Mixed		124	24	4,591	6,900
Spinach		14,065	13	58,617	101,045
Squash, Summer/Zucchini		7,437	153	23,313	55,613
Southern Greens		9,175		1,668	17,542
Other Vegetables		21,703	11,335	120,283	247,361
Total Vegetables		143,030	32,753	880,753	1,652,162
Potatoes					
French Fries	5,715	17,054	162,312	381,315	775,111
Other Frozen	2,526	22,450	59,897	80,615	221,294
Total Potatoes	8,241	39,504	222,209	461,930	996,405
Meat					
Frozen Beef					
Boneless ⁵	6,308	95,891	9,220	52,762	420,377
Beef Cuts ⁶	2,106	7,150	9,511	5,144	45,662
Total Beef	8,414	103,041	18,731	57,906	466,039
Frozen Pork					
Ribs ⁷	2,169	5,118	134	1,146	53,299
Trimming ⁸	518	2,987	85	1,338	33,575
Other ⁹	2,393	1,822	263	2,090	87,533
Other					
Veal		391		680	3,298
Lamb & Mutton	4	584	62	2,258	10,360
Total Other Meat	4	975	62	2,938	13,658

¹ East North Central combined with South Atlantic. Mountain and West North Central combined with West South Central.

² Duplication of in-shell pecan data was found. July 2006 revisions reflect data available at this time. Revisions to prior months will be made and published as soon as all data are made available.

³ Middle Atlantic combined with South Atlantic.

⁴ New England combined with Middle Atlantic. East South Central combined with South Atlantic.

⁵ Includes all boxed boneless beef, such as ground beef, roasts, steaks, loins, strips, rounds, trimmings, etc. Variety meats (edible offal), such as tongues, livers, hearts, kidneys, and other organs removed from slaughtered beef, are included as miscellaneous freezer stocks.

⁶ Includes all boxed primal beef cuts, bone-in.

⁷ Includes spareribs and backribs.

⁸ Includes 42% regular trimmings, 72% special trimmings, boneless picnic meat, jowls, neckbone trimmings, blade, cheek, head, and shank meat, etc. Packaged bacon, sausage, and processed items, such as hot dogs and luncheon meats, are included in miscellaneous cooler or freezer stocks.

⁹ Includes ears, tails, feet, neckbones and snouts.

**Stocks in Cold Storage: By Commodity, Region,
and United States, August 31, 2006**

Commodity	New England	Middle Atlantic	East North Central	West North Central	South Atlantic
	<i>1,000 Pounds</i>	<i>1,000 Pounds</i>	<i>1,000 Pounds</i>	<i>1,000 Pounds</i>	<i>1,000 Pounds</i>
Total Fresh Apples		21,599	14		8
Nuts					
Shelled					
Peanuts		187	73	19	202,582
Pecans ¹	18	170			8,231
In-Shell					
Pecans ¹					9,911
Dairy Products					
Natural Cheese					
American, Total	36,992	51,816	230,280	119,118	5,172
Other Natural Cheese	39	13,086	147,873	62,061	117
Frozen Poultry					
Chicken					
Broilers, Fryers					
Roasters (Whole)		690	264	1,088	5,627
Hens, Mature Chickens	5	404	84	583	9,485
Other	2,110	31,487	20,987	37,407	240,959
Total Chicken	2,115	32,581	21,335	39,078	256,071
Turkeys					
Whole Turkeys	7,537	27,565	14,571	64,191	36,603
Other Turkey	835	5,046	18,301	56,142	98,468
Total Turkey	8,372	32,611	32,872	120,333	135,071
Ducks		277	6,750	5	30
Total Poultry	10,487	65,469	60,957	159,416	391,172
Frozen Fruit					
Apples	127	10,804	38,800	166	899
Blueberries	11,684	9,355	62,960	1,374	4,515
Cherries, Tart (RTP)	53	7,016	115,591	289	
Cherries, Sweet		245	10,390	250	3
Peaches	39	1,591	5,538	5,336	119
Raspberries, Red	132	1,659	2,700	326	17
Strawberries, Total	161	4,776	8,437	444	909
Other Frozen Fruit	1,234	6,754	76,610	4,400	882

See footnote(s) at end of table.

--continued

**Stocks in Cold Storage: By Commodity, Region,
and United States, August 31, 2006 (continued)**

Commodity	East South Central	West South Central	Mountain	Pacific	US Total
	<i>1,000 Pounds</i>	<i>1,000 Pounds</i>	<i>1,000 Pounds</i>	<i>1,000 Pounds</i>	<i>1,000 Pounds</i>
Total Fresh Apples			8	61,899	83,528
Nuts					
Shelled					
Peanuts	23,567	95,024	82	159	321,693
Pecans ¹	1,071	33,579		94	43,163
In-Shell					
Pecans ¹	1,765	50,322			61,998
Dairy Products					
Natural Cheese					
American, Total	227	4,306	43,376	86,040	577,327
Other Natural Cheese	2,981	729	4,338	11,894	243,118
Frozen Poultry					
Chicken					
Broilers, Fryers					
Roasters (Whole)	2,622	5,382	250	2,173	18,096
Hens, Mature Chickens	450	1,561	3	144	12,719
Other	113,283	193,440	1,994	42,074	683,741
Total Chicken	116,355	200,383	2,247	44,391	714,556
Turkeys					
Whole Turkeys	8,629	49,174	10,299	24,789	243,358
Other Turkey	3,603	31,468	4,213	39,112	257,188
Total Turkey	12,232	80,642	14,512	63,901	500,546
Ducks	24	6	38	158	7,288
Total Poultry	128,611	281,031	16,797	108,450	1,222,390
Frozen Fruit					
Apples	110	694	93	8,272	59,965
Blueberries	173	360	40	35,040	125,501
Cherries, Tart (RTP)		98	15,921	4,291	143,259
Cherries, Sweet	2	26		5,809	16,725
Peaches	18	445	6	25,161	38,253
Raspberries, Red	155	361	48	73,543	78,941
Strawberries, Total	1,299	28,187	118	312,822	357,153
Other Frozen Fruit	152	13,685	66	75,467	179,250

See footnote(s) at end of table.

--continued

**Stocks in Cold Storage: By Commodity, Region,
and United States, August 31, 2006**

Commodity	New England	Middle Atlantic	East North Central	West North Central	South Atlantic
	<i>1,000 Pounds</i>	<i>1,000 Pounds</i>	<i>1,000 Pounds</i>	<i>1,000 Pounds</i>	<i>1,000 Pounds</i>
Frozen Juice					
Orange Juice Conc. ²	10		1,075	102	852,828
Other Juice Concentrate	3,447	21,068	18,995	1,822	107,488
Total Frozen Juice	3,457	21,068	20,070	1,924	954,037
Frozen Vegetables ³					
Asparagus		867	5,780	48	101
Limás, Fordhook		1,060	716	37	453
Limás, Baby		3,523	2,749	1,579	2,626
Green Beans, Reg. Cut		28,092	55,122	6,708	4,101
Green Beans, Fr. Style		8,811	8,110	1,135	350
Broccoli, Spears		7,549	4,767	62	1,830
Broccoli, Chopped & Cut		7,488	8,057	599	2,580
Brussels Sprouts		1,399	778	21	281
Carrots, Diced		5,011	10,741	211	430
Carrots, Other		8,063	10,398	1,319	718
Cauliflower		3,141	2,802	526	862
Corn, Cut		32,693	71,583	50,064	6,561
Corn, Cob		14,241	29,575	34,833	5,864
Mixed Vegetables		4,718	10,838	4,286	2,572
Okra		1,776	247	10,218	4,742
Onion Rings		183	2,801	1,105	1,687
Onions, Other		3,290	2,592	533	4,069
Blackeye Peas		1,328	189	6	2,906
Green Peas		50,532	43,576	39,225	16,051
Peas & Carrots Mixed		1,198	1,040	6	249
Spinach		15,551	6,371	143	4,908
Squash, Summer/Zucchini		5,184	24,765	1	1,048
Southern Greens		4,495	577	1	3,357
Other Vegetables		37,782	36,686	4,817	19,375
Total Vegetables		246,876	340,860	157,483	70,026
Potatoes					
French Fries	28,692	16,028	55,901	81,421	16,331
Other Frozen	5,394	9,122	27,878	6,606	1,914
Total Potatoes	34,086	25,150	83,779	88,027	18,245
Meat					
Frozen Beef					
Boneless ⁴	1,495	50,142	40,889	124,924	33,405
Beef Cuts ⁵	267	2,316	3,143	15,901	2,070
Total Beef	1,762	52,458	44,032	140,825	35,475
Frozen Pork					
Ribs ⁶	335	1,595	11,303	21,166	6,487
Trimnings ⁷		824	9,010	16,868	1,180
Other ⁸	4,974	462	28,526	39,507	9,518
Other					
Veal		1,014	996	15	24
Lamb & Mutton		5,990	1,496	35	45
Total Other Meat		7,004	2,492	50	69

See footnote(s) at end of table.

--continued

**Stocks in Cold Storage: By Commodity, Region,
and United States, August 31, 2006 (continued)**

Commodity	East South Central	West South Central	Mountain	Pacific	US Total
	<i>1,000 Pounds</i>	<i>1,000 Pounds</i>	<i>1,000 Pounds</i>	<i>1,000 Pounds</i>	<i>1,000 Pounds</i>
Frozen Juice					
Orange Juice Concentrate	16	2,311	975	30,502	887,819
Other Juice Concentrate	59	11,500	6,441	76,640	247,460
Total Frozen Juice	75	13,811	7,416	107,142	1,135,279
Frozen Vegetables ³					
Asparagus		262	5	3,218	10,281
Limas, Fordhook		70		1,080	3,416
Limas, Baby		363	5	11,719	22,564
Green Beans, Reg. Cut		1,164	205	104,406	199,798
Green Beans, Fr. Style		111	6	14,422	32,945
Broccoli, Spears		12,005	7	3,481	29,701
Broccoli, Chopped & Cut		13,788	237	23,283	56,032
Brussels Sprouts		437	3	3,213	6,132
Carrots, Diced		967	40	28,463	45,863
Carrots, Other		9,643	82	49,399	79,622
Cauliflower		2,662	106	13,467	23,566
Corn, Cut		1,598	11,398	212,126	386,023
Corn, Cob		1,692	346	97,980	184,531
Mixed Vegetables		7,957	1,370	27,512	59,253
Okra		22,729		387	40,099
Onion Rings		497	359	180	6,812
Onions, Other		1,966	15,857	11,929	40,236
Blackeye Peas		499		420	5,348
Green Peas		4,671	8,617	235,183	397,855
Peas & Carrots Mixed		126	11	5,200	7,830
Spinach		11,793	13	50,038	88,817
Squash, Summer/Zucchini		6,797	91	22,316	60,202
Southern Greens		8,478		1,566	18,474
Other Vegetables		21,380	11,294	131,181	262,515
Total Vegetables		131,655	50,052	1,052,169	2,067,915
Potatoes					
French Fries	7,210	14,989	151,260	395,637	767,469
Other Frozen	1,745	20,861	46,609	79,492	199,621
Total Potatoes	8,955	35,850	197,869	475,129	967,090
Meat					
Frozen Beef					
Boneless ⁴	4,030	91,220	8,945	56,695	411,745
Beef Cuts ⁵	2,381	8,235	11,280	7,194	52,787
Total Beef	6,411	99,455	20,225	63,889	464,532
Frozen Pork					
Ribs ⁶	2,060	5,998	21	887	49,852
Trimming ⁷	453	3,157	89	1,068	32,649
Other ⁸	2,441	2,104	242	2,219	89,993
Other					
Veal		124		583	2,756
Lamb & Mutton		718	148	2,151	10,583
Total Other Meat		842	148	2,734	13,339

¹ East North Central combined with South Atlantic. Mountain and West North Central Combined with West South Central.

² Middle Atlantic combined with South Atlantic.

³ New England combined with Middle Atlantic. East South Central combined with South Atlantic.

⁴ Includes all boxed boneless beef, such as ground beef, roasts, steaks, loins, strips, rounds, trimmings, etc. Variety meats (edible offal), such as tongues, livers, hearts, kidneys, and other organs removed from slaughtered beef, are included as miscellaneous freezer stocks.

⁵ Includes all boxed primal beef cuts, bone-in.

⁶ Includes spareribs and backribs.

⁷ Includes 42% regular trimmings, 72% special trimmings, boneless picnic meat, jowls, neckbone trimmings, blade, cheek, head, and shank meat, etc. Packaged bacon, sausage, and processed items, such as hot dogs and luncheon meats, are included in miscellaneous cooler or freezer stocks.

⁸ Includes ears, tails, feet, neckbones and snouts.

Cold Storage Regions



Reliability of Cold Storage Estimates

Survey Procedures: Questionnaires are mailed about the 24th of each month to all operators on the list of approximately 1,400 public and private cold storage warehouses. In addition, apple data are obtained from special surveys and other sources (State Departments of Agriculture, U.S. Apple Association, etc.). All survey data represent stocks as of the end of the month.

Data are collected from warehouses artificially cooled to a temperature of 50 degrees Fahrenheit or lower, and whose food products are normally stored for 30 days or more. All food items in these facilities are reported regardless of the number of days stored at the time of the report. Also included are specialized storage facilities meeting the 30 day requirement, such as fruit houses, dairy manufacturing plants, frozen fruit, fruit juice, and vegetable processors, and poultry and meat packing plants. Excluded are stocks in space maintained by wholesalers, jobbers, distributors, chain stores, locker plants containing individual lockers, meat packer branch houses, and frozen food processors whose entire inventories are turned over more than once a month.

Estimating Procedures: Data for reporting firms are added to estimates for non-reporting firms to obtain regional and National totals. Estimates for non-reporting firms are obtained by multiplying the previous month's figure by a percent change from the previous month. The percent change is calculated for each item from totals of the current and previous month summed from firms that reported both months.

Revision Policy: Data are revised the following month based on late reports or corrected data. Final figures are published in the annual summary in February of the following year.

Reliability: Reports are received from 900 firms each month which represent about 70 percent of the total capacity. Firms that are not on the list or firms who have never reported are not represented in the data. Monthly data can vary due to different firms reporting month to month. Survey data are also subject to non-sampling errors such as omissions and mistakes in reporting and in processing the data. While these errors cannot be measured directly, they are minimized by carefully reviewing all reported data for consistency and reasonableness.

Information Contacts

Listed below are the commodity specialists in the Livestock Branch of the National Agricultural Statistics Service to contact for additional information.

Dan Kerestes, Chief, Livestock Branch	(202) 720-3570
Darin Jantzi, Head, Poultry and Specialty Commodities Section	(202) 720-3570
David Colwell - Cold Storage	(202) 720-8784
Fleming Gibson - Egg Products, Poultry Slaughter, Catfish Processing, Mink, Turkey Hatchery	(202) 690-3237
John Lange - Turkeys Raised, Catfish Production, Trout Production, Census of Aquaculture	(202) 720-0585
Sharyn Lavender - Layers, Eggs, Broiler Hatchery, Chicken Hatchery, Honey	(202) 720-3244

ACCESS TO REPORTS!!

For your convenience, there are several ways to obtain NASS reports, data products, and services:

INTERNET ACCESS

All NASS reports are available free of charge on the worldwide Internet. For access, connect to the Internet and go to the NASS Home Page at: www.nass.usda.gov.

E-MAIL SUBSCRIPTION

All NASS reports are available by subscription free of charge direct to your e-mail address. Starting with the NASS Home Page at www.nass.usda.gov, under the right navigation, *Receive reports by Email*, click on **National** or **State**. Follow the instructions on the screen.

PRINTED REPORTS OR DATA PRODUCTS

CALL OUR TOLL-FREE ORDER DESK: 800-999-6779 (U.S. and Canada)
Other areas, please call 703-605-6220 FAX: 703-605-6900
(Visa, MasterCard, check, or money order acceptable for payment.)

ASSISTANCE

For **assistance** with general agricultural statistics or further information about NASS or its products or services, contact the **Agricultural Statistics Hotline** at **800-727-9540**, 7:30 a.m. to 4:00 p.m. ET, or e-mail: nass@nass.usda.gov.

The U.S. Department of Agriculture (USDA) prohibits discrimination in all its programs and activities on the basis of race, color, national origin, age, disability, and where applicable, sex, marital status, familial status, parental status, religion, sexual orientation, genetic information, political beliefs, reprisal, or because all or part of an individual's income is derived from any public assistance program. (Not all prohibited bases apply to all programs.) Persons with disabilities who require alternative means for communication of program information (Braille, large print, audiotape, etc.) should contact USDA's TARGET Center at (202) 720-2600 (voice and TDD).

To file a complaint of discrimination, write to USDA, Director, Office of Civil Rights, 1400 Independence Avenue, S.W., Washington, D.C. 20250-9410, or call (800) 795-3272 (voice) or (202) 720-6382 (TDD). USDA is an equal opportunity provider and employer.