



NASS

FACT FINDERS FOR AGRICULTURE
UNITED STATES DEPARTMENT OF AGRICULTURE

Washington, D.C.

Cold Storage

Released October 20, 2006, by the National Agricultural Statistics Service (NASS), Agricultural Statistics Board, U.S. Department of Agriculture. For information on *Cold Storage* call David Colwell at (202) 720-8784, office hours 7:30 a.m. to 4:00 p.m. ET.

Highlights

Frozen food stocks in refrigerated warehouses on September 30, 2006 were greater than year earlier levels for butter, beef, cheese, pork, and eggs.

Butter stocks were down 7 percent from last month, but up 42 percent from a year ago.

Total red meat supplies in freezers were up 11 percent from both last month and the previous year. Frozen pork supplies were up 15 percent from last month and up 7 percent from last year. Stocks of pork bellies were down 14 percent from last month and down 27 percent from last year.

Total frozen poultry supplies on September 30, 2006 were down 2 percent from the previous month and down 3 percent from a year ago. Total stocks of chicken were up 2 percent from the previous month, but down 4 percent from last year. Total pounds of turkey in freezers were down 7 percent from last month and down 3 percent from September 30, 2005.

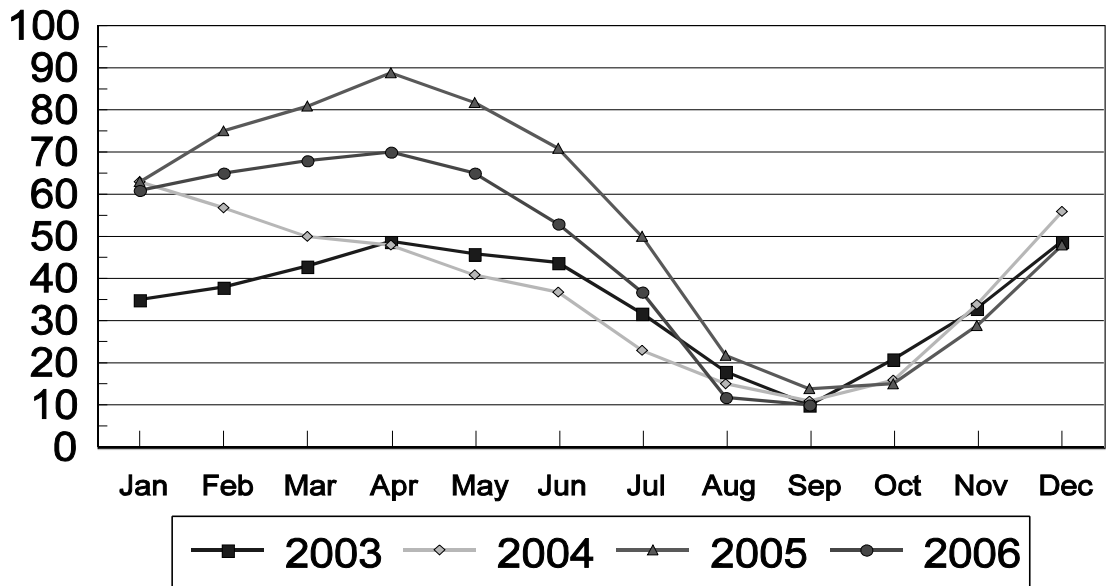
This page is intentionally blank.

Contents

	Page
Stocks in Cold Storage By Commodity	
United States, September 2006	1
Region, and United States, August 31, 2006	5
Region, and United States, September 30, 2006	9
Reliability Statement	14
Information Contacts	14

Frozen Pork Bellies - United States Cold Storage Stocks, 2003-2006

Million Pounds



**Stocks in Cold Storage: By Commodity,
United States, September 2006**

Commodity	Stocks in All Warehouses			Percent of		Public Warehouse Stocks
	Sep 30, 2005	Aug 31, 2006 ¹	Sep 30, 2006	Sep 2005	Aug 2006	Sep 30, 2006
	<i>1,000 Pounds</i>	<i>1,000 Pounds</i>	<i>1,000 Pounds</i>	<i>Percent</i>	<i>Percent</i>	<i>1,000 Lbs</i>
Fresh Fruit						
Apples						
Regular Storage	1,009,941	19,583	1,045,746	104	5,340	
Controlled Atmosphere	1,968,279	63,942	2,045,623	104	3,199	
Total	2,978,220	83,525	3,091,369	104	3,701	8,949
Pears						
Bartlett	109,403	80,307	93,242	85	116	
Other Varieties	330,978	1,328	298,408	90	22,470	
Total	440,381	81,635	391,650	89	480	1,365
Nuts						
Shelled						
Peanuts	219,375	321,681	354,398	162	110	
Pecans	23,010	42,925	34,696	151	81	
Other Shelled	89,024	81,121	86,263	97	106	
Total	331,409	445,727	475,357	143	107	177,606
In-Shell						
Peanuts	14,944	15,617	17,187	115	110	
Pecans ²	13,910	70,298	55,889	402	80	
Other In-Shell	7,729	7,832	7,566	98	97	
Total	36,583	93,747	80,642	220	86	35,267
Dairy Products						
Butter, Total	124,061	188,772	175,619	142	93	133,206
(Government Owned)	44	94	2,591	5,889	2,756	
Natural Cheese						
American, Total	554,760	584,750	565,562	102	97	
(Government Owned)	844	272	200	24	74	
Swiss	24,263	29,861	36,429	150	122	
Other Natural Cheese	189,978	247,406	252,628	133	102	
Total	769,001	862,017	854,619	111	99	469,958
Eggs, Frozen						
Whites	2,908	2,537	2,610	90	103	
Yolks	1,217	1,366	1,338	110	98	
Whole & Mixed	11,198	13,609	12,120	108	89	
Unclassified	3,514	4,048	3,223	92	80	
Total	18,837	21,560	19,291	102	89	18,448
Frozen Poultry						
Chicken						
Broilers, Fryers						
Roasters (Whole)	21,989	18,056	16,712	76	93	
Hens, Mature Chickens	1,885	12,701	11,195	594	88	
Breasts & Breast Meat	136,933	131,086	122,355	89	93	
Drumsticks	11,779	23,914	15,812	134	66	
Leg Quarters	109,658	70,790	89,467	82	126	
Legs	12,021	9,731	10,146	84	104	
Thigh & Thigh Quarters	9,321	10,072	10,332	111	103	
Thigh Meat	9,368	15,816	15,434	165	98	
Wings	42,746	37,097	43,651	102	118	
Paws and Feet	10,146	12,702	13,616	134	107	
Other	389,036	368,455	375,178	96	102	
Total Chicken	754,882	710,420	723,898	96	102	

See footnote(s) at end of table.

--continued

**Stocks in Cold Storage: By Commodity,
United States, September 2006**

Commodity	Stocks in All Warehouses			Percent of		Public Warehouse Stocks
	Sep 30, 2005	Aug 31, 2006 ¹	Sep 30, 2006	Sep 2005	Aug 2006	Sep 30, 2006
	<i>1,000 Pounds</i>	<i>1,000 Pounds</i>	<i>1,000 Pounds</i>	<i>Percent</i>	<i>Percent</i>	<i>1,000 Lbs</i>
Turkeys						
Toms (Whole Carcasses)	158,100	129,685	125,234	79	97	
Hens (Whole Carcasses)	107,494	114,524	108,067	101	94	
Whole Turkeys	265,594	244,209	233,301	88	96	
Other Turkey	212,207	256,049	229,965	108	90	
Total Turkey	477,801	500,258	463,266	97	93	357,333
Ducks	2,452	7,286	6,294	257	86	
Total Poultry	1,235,135	1,217,964	1,193,458	97	98	1,035,367
Frozen Fruit						
Apples	50,321	59,737	54,027	107	90	
Apricots	6,358	3,633	5,276	83	145	
Blackberries, Total	32,441	32,164	32,714	101	102	
IQF	21,099	19,796	20,466	97	103	
Pails and Tubs	5,319	7,448	7,066	133	95	
Barrels, 400 lbs net	5,724	4,902	5,133	90	105	
Concentrate	299	18	49	16	272	
Blueberries	109,229	123,072	115,464	106	94	
Boysenberries	2,124	2,644	2,371	112	90	
Cherries, Tart (RTP)	139,969	143,082	134,078	96	94	
Cherries, Tart (Juice)	2,795	5,849	4,651	166	80	
Cherries, Sweet	12,736	16,699	16,211	127	97	
Grapes	3,659	2,292	6,052	165	264	
Peaches	72,567	38,302	60,311	83	157	
Raspberries, Black	2,003	2,738	2,092	104	76	
Raspberries, Red, Total	70,147	78,993	68,616	98	87	
IQF	19,681	31,423	25,832	131	82	
Pails and Tubs	13,992	16,089	14,870	106	92	
Barrels, 400 lbs net	34,567	30,341	26,308	76	87	
Concentrate	1,907	1,140	1,606	84	141	
Strawberries, Total	324,809	357,189	295,954	91	83	
IQF and Poly	155,502	139,696	105,508	68	76	
Pails and Tubs	103,435	131,612	119,041	115	90	
Barrels and Drums	52,671	59,790	54,369	103	91	
Juice Stock	13,201	26,091	17,036	129	65	
Other Frozen Fruit	158,923	160,851	173,974	109	108	
Total	988,081	1,027,245	971,791	98	95	833,036
Frozen Juice						
Orange Juice Conc. ³	1,243,274	888,835	779,059	63	88	
(Gallon Equivalent)	125,634	89,818	78,725			
Other Juice Concentrate	235,197	243,023	233,124	99	96	
Total	1,478,471	1,131,858	1,012,183	68	89	151,378

See footnote(s) at end of table.

--continued

**Stocks in Cold Storage: By Commodity,
United States, September 2006**

Commodity	Stocks in All Warehouses			Percent of		Public Warehouse Stocks
	Sep 30, 2005	Aug 31, 2006 ¹	Sep 30, 2006	Sep 2005	Aug 2006	Sep 30, 2006
	<i>1,000 Pounds</i>	<i>1,000 Pounds</i>	<i>1,000 Pounds</i>	<i>Percent</i>	<i>Percent</i>	<i>1,000 Lbs</i>
Frozen Vegetables						
Asparagus	11,714	10,270	7,925	68	77	
Limas, Fordhook	10,494	2,417	6,980	67	289	
Limas, Baby	41,422	23,136	39,341	95	170	
Green Beans, Reg. Cut	256,015	199,238	248,947	97	125	
Green Beans, Fr. Style	33,938	34,853	39,249	116	113	
Broccoli, Spears	43,342	30,274	29,554	68	98	
Broccoli, Chopped & Cut	60,840	62,191	55,172	91	89	
Brussels Sprouts	9,768	6,086	3,980	41	65	
Carrots, Diced	45,283	43,953	61,018	135	139	
Carrots, Other	87,458	79,723	82,544	94	104	
Cauliflower	23,935	23,538	28,314	118	120	
Corn, Cut	521,330	392,687	570,773	109	145	
Corn, Cob	256,009	189,243	317,619	124	168	
Mixed Vegetables	56,989	61,632	67,417	118	109	
Okra	40,637	39,880	39,571	97	99	
Onion Rings	4,555	6,814	6,211	136	91	
Onions, Other	36,163	40,362	42,651	118	106	
Blackeye Peas	3,376	5,032	4,581	136	91	
Green Peas	306,054	390,822	360,188	118	92	
Peas & Carrots Mixed	5,926	5,245	4,836	82	92	
Spinach	56,152	94,229	79,456	142	84	
Squash, Summer/Zucchini	51,596	61,031	67,664	131	111	
Southern Greens	14,446	16,243	16,255	113	100	
Other Vegetables	379,018	265,937	300,393	79	113	
Total	2,356,460	2,084,836	2,480,639	105	119	1,729,408
Potatoes						
French Fries	932,179	765,090	802,858	86	105	
Other Frozen	248,179	199,049	200,351	81	101	
Total	1,180,358	964,139	1,003,209	85	104	736,084

See footnote(s) at end of table.

--continued

**Stocks in Cold Storage: By Commodity,
United States, September 2006**

Commodity	Stocks in All Warehouses			Percent of		Public Warehouse Stocks
	Sep 30, 2005	Aug 31, 2006 ¹	Sep 30, 2006	Sep 2005	Aug 2006	Sep 30, 2006
	<i>1,000 Pounds</i>	<i>1,000 Pounds</i>	<i>1,000 Pounds</i>	<i>Percent</i>	<i>Percent</i>	<i>1,000 Lbs</i>
Meat						
Frozen Beef						
Boneless ⁴	392,153	411,600	433,056	110	105	
Beef Cuts ⁵	46,597	60,077	64,445	138	107	
Total	438,750	471,677	497,501	113	105	495,052
(Government Owned)	2,020	3,810	1,931	96	51	
Frozen Pork						
Picnics, Bone-in	9,397	8,557	12,506	133	146	
Hams, Total	105,151	96,314	115,326	110	120	110,905
Bone-in	64,810	65,279	72,281	112	111	69,621
Boneless ⁶	40,341	31,035	43,045	107	139	41,284
Bellies	14,117	11,962	10,250	73	86	
Loins, Total	31,551	24,395	28,763	91	118	26,647
Bone-in	19,064	11,617	13,822	73	119	
Boneless ⁷	12,487	12,778	14,941	120	117	
Ribs ⁸	55,473	49,697	56,385	102	113	
Butts	7,289	7,912	10,735	147	136	
Trimmings ⁹	33,232	34,073	37,963	114	111	
Other ¹⁰	84,229	90,583	100,053	119	110	
Variety Meats ¹¹	32,463	35,628	41,110	127	115	
Unclassified ¹²	58,671	45,304	50,787	87	112	
Total	431,573	404,425	463,878	107	115	421,860
(Government Owned)	345	1,313	1,430	414	109	
Other						
Veal	3,688	2,781	3,783	103	136	
Lamb & Mutton	10,942	10,583	24,826	227	235	
Total	14,630	13,364	28,609	196	214	28,570
Canned						
Canned Hams	4,058	1,591	1,496	37	94	
Other Canned Meat	1,921	2,559	1,219	63	48	
Total	5,979	4,150	2,715	45	65	2,688
Total	890,932	893,616	992,703	111	111	948,170
Miscellaneous						
Cooler	789,740	694,478	767,170	97	110	323,434
Freezer	2,211,732	2,047,254	2,275,799	103	111	2,218,801
Total	3,001,472	2,741,732	3,042,969	101	111	2,542,235
Commodities						
Stored in Coolers	5,362,197	2,281,862	5,677,200	106	249	1,279,537
Stored in Freezers	10,467,204	9,556,511	10,108,299	97	106	7,801,210
Total	15,829,401	11,838,373	15,785,499	100	133	9,080,747

¹ Revised.

² Duplication of in-shell pecan data was found. August 2005 and July 2006 revisions reflect data available at this time. Revisions to prior months will be made and published as soon as all data are made available.

³ Adjusted to 42.0 degrees Brix equivalent (9.896 pounds per gallon).

⁴ Includes all boxed boneless beef, such as ground beef, roasts, steaks, loins, strips, rounds, trimmings, etc. Variety meats (edible offal), such as tongues, livers, hearts, kidneys, and other organs removed from slaughtered beef, are included as miscellaneous freezer stocks.

⁵ Includes all boxed primal beef cuts, bone-in.

⁶ Includes full ham, bone removed and individual muscles separated.

⁷ Includes pork tenderloins.

⁸ Includes spareribs and backribs.

⁹ Includes 42% regular trimmings, 72% special trimmings, boneless picnic meat, jowls, neckbone trimmings, blade, cheek, head, and shank meat, etc. Packaged bacon, sausage, and processed items, such as hot dogs and luncheon meats, are included in miscellaneous cooler or freezer stocks.

¹⁰ Includes ears, tails, feet, neckbones and snouts.

¹¹ Includes tongues, kidneys, livers, stomachs, hearts, chitterlings, salivary glands, and other organs removed from slaughtered hogs.

¹² Includes product unable to be classified elsewhere in this report.

**Stocks in Cold Storage: By Commodity, Region,
and United States, August 31, 2006, Revised**

Commodity	New England	Middle Atlantic	East North Central	West North Central	South Atlantic
	<i>1,000 Pounds</i>	<i>1,000 Pounds</i>	<i>1,000 Pounds</i>	<i>1,000 Pounds</i>	<i>1,000 Pounds</i>
Total Fresh Apples		21,599	14		8
Nuts					
Shelled					
Peanuts		187	71	9	202,582
Pecans ¹	18	170			8,224
In-Shell					
Pecans ^{1 2}					9,912
Dairy Products					
Natural Cheese					
American, Total	36,992	52,754	234,193	119,257	5,172
Other Natural Cheese	39	14,546	151,287	61,589	117
Frozen Poultry					
Chicken					
Broilers, Fryers					
Roasters (Whole)		690	267	1,082	5,632
Hens, Mature Chickens	5	404	84	565	9,485
Other	2,110	31,487	21,029	37,077	238,396
Total Chicken	2,115	32,581	21,380	38,724	253,513
Turkeys					
Whole Turkeys	7,537	28,565	14,571	62,896	38,003
Other Turkey	835	5,046	18,301	55,051	98,468
Total Turkey	8,372	33,611	32,872	117,947	136,471
Ducks		277	6,750	3	30
Total Poultry	10,487	66,469	61,002	156,674	390,014
Frozen Fruit					
Apples	127	10,804	38,695	167	899
Blueberries	11,684	9,315	62,938	1,371	3,130
Cherries, Tart (RTP)	53	7,016	115,591	147	
Cherries, Sweet		225	10,384	250	3
Peaches	39	1,599	5,538	5,399	119
Raspberries, Red	132	1,660	2,704	326	17
Strawberries, Total	161	4,805	8,544	389	909
Other Frozen Fruit	1,234	6,765	57,589	4,400	882

See footnote(s) at end of table.

--continued

**Stocks in Cold Storage: By Commodity, Region,
and United States, August 31, 2006, Revised, (continued)**

Commodity	East South Central	West South Central	Mountain	Pacific	US Total
	<i>1,000 Pounds</i>	<i>1,000 Pounds</i>	<i>1,000 Pounds</i>	<i>1,000 Pounds</i>	<i>1,000 Pounds</i>
Total Fresh Apples			8	61,896	83,525
Nuts					
Shelled					
Peanuts	23,567	95,024	82	159	321,681
Pecans ¹	1,071	33,348		94	42,925
In-Shell					
Pecans ¹	1,765	58,621			70,298
Dairy Products					
Natural Cheese					
American, Total	227	4,306	40,958	90,891	584,750
Other Natural Cheese	2,981	685	4,268	11,894	247,406
Frozen Poultry					
Chicken					
Broilers, Fryers					
Roasters (Whole)	2,622	5,382	208	2,173	18,056
Hens, Mature Chickens	450	1,561	3	144	12,701
Other	112,772	193,440	2,056	41,296	679,663
Total Chicken	115,844	200,383	2,267	43,613	710,420
Turkeys					
Whole Turkeys	8,629	49,174	10,045	24,789	244,209
Other Turkey	3,603	31,468	4,546	38,731	256,049
Total Turkey	12,232	80,642	14,591	63,520	500,258
Ducks	24	6	38	158	7,286
Total Poultry	128,100	281,031	16,896	107,291	1,217,964
Frozen Fruit					
Apples	110	694	93	8,148	59,737
Blueberries	173	360	24	34,077	123,072
Cherries, Tart (RTP)		98	15,888	4,289	143,082
Cherries, Sweet	2	26		5,809	16,699
Peaches	18	445	6	25,139	38,302
Raspberries, Red	155	361	70	73,568	78,993
Strawberries, Total	1,299	28,187	135	312,760	357,189
Other Frozen Fruit	152	13,685	89	76,055	160,851

See footnote(s) at end of table.

--continued

**Stocks in Cold Storage: By Commodity, Region,
and United States, August 31, 2006, Revised**

Commodity	New England	Middle Atlantic	East North Central	West North Central	South Atlantic
	<i>1,000 Pounds</i>	<i>1,000 Pounds</i>	<i>1,000 Pounds</i>	<i>1,000 Pounds</i>	<i>1,000 Pounds</i>
Frozen Juice					
Orange Juice Conc. ³	10		1,111	88	853,843
Other Juice Concentrate	3,447	21,068	18,650	1,726	107,488
Total Frozen Juice	3,457	21,068	19,761	1,814	955,052
Frozen Vegetables ⁴					
Asparagus		850	5,790	45	101
Limas, Fordhook		408	716	37	453
Limas, Baby		3,475	2,748	1,580	2,626
Green Beans, Reg. Cut		24,573	55,015	6,597	4,101
Green Beans, Fr. Style		8,031	8,223	1,135	350
Broccoli, Spears		8,128	4,807	14	1,830
Broccoli, Chopped & Cut		7,306	8,093	603	2,580
Brussels Sprouts		1,352	779	21	281
Carrots, Diced		4,686	10,469	211	430
Carrots, Other		8,063	10,512	1,322	718
Cauliflower		3,161	2,799	525	862
Corn, Cut		33,468	70,791	49,750	6,561
Corn, Cob		15,013	25,008	34,829	5,864
Mixed Vegetables		4,759	11,627	4,287	2,572
Okra		1,556	247	10,218	4,742
Onion Rings		183	2,801	1,107	1,687
Onions, Other		3,045	2,635	533	4,069
Blackeye Peas		1,012	189	6	2,906
Green Peas		46,947	43,544	39,223	16,051
Peas & Carrots Mixed		1,132	1,022	6	249
Spinach		16,164	6,503	143	4,908
Squash, Summer/Zucchini		5,283	24,754		1,048
Southern Greens		2,258	583	1	3,357
Other Vegetables		37,376	37,205	4,969	19,375
Total Vegetables		238,229	336,860	157,162	87,721
Potatoes					
French Fries	28,692	16,028	53,166	81,138	16,331
Other Frozen	5,394	9,150	27,409	6,890	1,914
Total Potatoes	34,086	25,178	80,575	88,028	18,245
Meat					
Frozen Beef					
Boneless ⁵	1,495	50,142	40,668	125,295	33,405
Beef Cuts ⁶	267	2,316	3,143	22,848	2,070
Total Beef	1,762	52,458	43,811	148,143	35,475
Frozen Pork					
Ribs ⁷	335	1,595	11,303	21,011	6,487
Trimming ⁸		824	9,010	18,292	1,180
Other ⁹	4,974	462	28,526	40,098	9,518
Other					
Veal		1,014	996	40	24
Lamb & Mutton		5,990	1,496	35	45
Total Other Meat		7,004	2,492	75	69

See footnote(s) at end of table.

--continued

**Stocks in Cold Storage: By Commodity, Region,
and United States, August 31, 2006, Revised, (continued)**

Commodity	East South Central	West South Central	Mountain	Pacific	US Total
	<i>1,000 Pounds</i>	<i>1,000 Pounds</i>	<i>1,000 Pounds</i>	<i>1,000 Pounds</i>	<i>1,000 Pounds</i>
Frozen Juice					
Orange Juice Conc. ³	16	2,311	954	30,502	888,835
Other Juice Concentrate	59	11,500	6,392	72,693	243,023
Total Frozen Juice	75	13,811	7,346	103,195	1,131,858
Frozen Vegetables ⁴					
Asparagus		262	5	3,217	10,270
Limas, Fordhook		70		733	2,417
Limas, Baby		363	5	12,339	23,136
Green Beans, Reg. Cut		1,164	205	107,583	199,238
Green Beans, Fr. Style		111	6	16,997	34,853
Broccoli, Spears		12,005	7	3,483	30,274
Broccoli, Chopped & Cut		13,788	266	29,555	62,191
Brussels Sprouts		437	3	3,213	6,086
Carrots, Diced		967	36	27,154	43,953
Carrots, Other		9,643	82	49,383	79,723
Cauliflower		2,662	106	13,423	23,538
Corn, Cut		1,598	11,423	219,096	392,687
Corn, Cob		1,692	346	106,491	189,243
Mixed Vegetables		7,957	1,370	29,060	61,632
Okra		22,729		388	39,880
Onion Rings		497	359	180	6,814
Onions, Other		1,966	15,871	12,243	40,362
Blackeye Peas		499		420	5,032
Green Peas		4,671	8,617	231,769	390,822
Peas & Carrots Mixed		126	11	2,699	5,245
Spinach		11,793	13	54,705	94,229
Squash, Summer/Zucchini		6,797	91	23,058	61,031
Southern Greens		8,478		1,566	16,243
Other Vegetables		21,380	11,265	134,367	265,937
Total Vegetables		131,655	50,087	1,083,122	2,084,836
Potatoes					
French Fries	7,210	14,989	151,260	396,276	765,090
Other Frozen	1,745	20,861	46,631	79,055	199,049
Total Potatoes	8,955	35,850	197,891	475,331	964,139
Meat					
Frozen Beef					
Boneless ⁵	4,030	91,220	8,936	56,409	411,600
Beef Cuts ⁶	2,381	8,235	11,616	7,201	60,077
Total Beef	6,411	99,455	20,552	63,610	471,677
Frozen Pork					
Ribs ⁷	2,060	5,998	21	887	49,697
Trimming ⁸	453	3,157	89	1,068	34,073
Other ⁹	2,441	2,104	241	2,219	90,583
Other					
Veal		124		583	2,781
Lamb & Mutton		718	148	2,151	10,583
Total Other Meat		842	148	2,734	13,364

¹ East North Central combined with South Atlantic. Mountain and West North Central combined with West South Central.

² Duplication of in-shell pecan data was found. July 2006 revisions reflect data available at this time. Revisions to prior months will be made and published as soon as all data are made available.

³ Middle Atlantic combined with South Atlantic.

⁴ New England combined with Middle Atlantic. East South Central combined with South Atlantic.

⁵ Includes all boxed boneless beef, such as ground beef, roasts, steaks, loins, strips, rounds, trimmings, etc. Variety meats (edible offal), such as tongues, livers, hearts, kidneys, and other organs removed from slaughtered beef, are included as miscellaneous freezer stocks.

⁶ Includes all boxed primal beef cuts, bone-in.

⁷ Includes spareribs and backribs.

⁸ Includes 42% regular trimmings, 72% special trimmings, boneless picnic meat, jowls, neckbone trimmings, blade, cheek, head, and shank meat, etc. Packaged bacon, sausage, and processed items, such as hot dogs and luncheon meats, are included in miscellaneous cooler or freezer stocks.

⁹ Includes ears, tails, feet, neckbones and snouts.

**Stocks in Cold Storage: By Commodity, Region,
and United States, September 30, 2006**

Commodity	New England	Middle Atlantic	East North Central	West North Central	South Atlantic
	<i>1,000 Pounds</i>	<i>1,000 Pounds</i>	<i>1,000 Pounds</i>	<i>1,000 Pounds</i>	<i>1,000 Pounds</i>
Total Fresh Apples		280,920	20,677	1	7
Nuts					
Shelled					
Peanuts		244	64	10	235,164
Pecans ¹	15	145			7,462
In-Shell					
Pecans ¹					8,266
Dairy Products					
Natural Cheese					
American, Total	36,744	52,954	228,532	117,666	4,129
Other Natural Cheese	41	16,371	155,640	60,351	142
Frozen Poultry					
Chicken					
Broilers, Fryers					
Roasters (Whole)		694	249	1,034	5,709
Hens, Mature Chickens	5	452	142	616	8,179
Other	1,915	26,522	23,826	33,332	232,797
Total Chicken	1,920	27,668	24,217	34,982	246,685
Turkeys					
Whole Turkeys	8,151	29,255	13,608	49,760	41,174
Other Turkey	760	4,819	17,323	49,115	84,831
Total Turkey	8,911	34,074	30,931	98,875	126,005
Ducks		240	5,828	2	26
Total Poultry	10,831	61,982	60,976	133,859	372,716
Frozen Fruit					
Apples	110	9,852	34,687	137	727
Blueberries	9,662	8,795	59,472	1,688	2,492
Cherries, Tart (RTP)	49	6,622	107,991	146	3
Cherries, Sweet		265	10,197	248	
Peaches	60	2,277	9,938	5,752	80
Raspberries, Red	119	1,890	2,334	371	18
Strawberries, Total	120	5,602	8,476	559	903
Other Frozen Fruit	1,331	4,284	67,320	4,838	1,931

See footnote(s) at end of table.

--continued

**Stocks in Cold Storage: By Commodity, Region,
and United States, September 30, 2006 (continued)**

Commodity	East South Central	West South Central	Mountain	Pacific	US Total
	<i>1,000 Pounds</i>	<i>1,000 Pounds</i>	<i>1,000 Pounds</i>	<i>1,000 Pounds</i>	<i>1,000 Pounds</i>
Total Fresh Apples			84	2,789,680	3,091,369
Nuts					
Shelled					
Peanuts	25,253	93,408	80	175	354,398
Pecans ¹	873	26,116		85	34,696
In-Shell					
Pecans ¹	1,324	46,299			55,889
Dairy Products					
Natural Cheese					
American, Total	254	4,361	39,403	81,519	565,562
Other Natural Cheese	2,983	1,048	4,301	11,751	252,628
Frozen Poultry					
Chicken					
Broilers, Fryers					
Roasters (Whole)	2,576	4,090	191	2,169	16,712
Hens, Mature Chickens	452	1,177	2	170	11,195
Other	117,552	213,634	1,935	44,478	695,991
Total Chicken	120,580	218,901	2,128	46,817	723,898
Turkeys					
Whole Turkeys	8,068	47,269	11,430	24,586	233,301
Other Turkey	3,848	28,372	3,843	37,054	229,965
Total Turkey	11,916	75,641	15,273	61,640	463,266
Ducks	21	5	32	140	6,294
Total Poultry	132,517	294,547	17,433	108,597	1,193,458
Frozen Fruit					
Apples	71	623	87	7,733	54,027
Blueberries	154	409	21	32,771	115,464
Cherries, Tart (RTP)		87	14,934	4,249	134,078
Cherries, Sweet	2			5,496	16,211
Peaches	27	988	9	41,180	60,311
Raspberries, Red	138	319	62	63,365	68,616
Strawberries, Total	1,155	24,837	142	254,160	295,954
Other Frozen Fruit	181	13,021	89	80,979	173,974

See footnote(s) at end of table.

--continued

**Stocks in Cold Storage: By Commodity, Region,
and United States, September 30, 2006**

Commodity	New England	Middle Atlantic	East North Central	West North Central	South Atlantic
	<i>1,000 Pounds</i>	<i>1,000 Pounds</i>	<i>1,000 Pounds</i>	<i>1,000 Pounds</i>	<i>1,000 Pounds</i>
Frozen Juice					
Orange Juice Conc. ²	9		1,172	81	748,421
Other Juice Concentrate	8,563	21,646	25,030	1,860	92,804
Total Frozen Juice	8,572	21,646	26,202	1,941	835,884
Frozen Vegetables ³					
Asparagus		735	5,404	43	86
Limas, Fordhook		469	796	43	427
Limas, Baby		4,534	2,286	4,138	3,375
Green Beans, Reg. Cut		28,807	73,733	7,808	4,637
Green Beans, Fr. Style		9,310	11,148	470	406
Broccoli, Spears		7,493	4,897	2	2,127
Broccoli, Chopped & Cut		5,925	6,917	595	2,568
Brussels Sprouts		995	512		195
Carrots, Diced		3,510	13,383	3,151	451
Carrots, Other		6,811	12,135	695	657
Cauliflower		3,722	2,493	455	894
Corn, Cut		46,507	92,196	91,634	6,914
Corn, Cob		22,887	35,567	62,169	9,892
Mixed Vegetables		5,648	11,531	8,584	2,583
Okra		1,623	238	10,188	4,851
Onion Rings		203	2,764	725	1,588
Onions, Other		2,726	2,904	342	4,464
Blackeye Peas		927	112		2,881
Green Peas		43,430	39,012	37,565	14,718
Peas & Carrots Mixed		1,007	896	5	212
Spinach		12,498	5,579	143	4,352
Squash, Summer/Zucchini		5,169	30,884		999
Southern Greens		2,303	692	1	3,403
Other Vegetables		48,662	37,662	8,682	21,420
Total Vegetables		264,068	393,741	237,438	74,325
Potatoes					
French Fries	30,508	16,716	62,472	90,032	18,623
Other Frozen	5,560	8,364	29,900	7,054	1,210
Total Potatoes	36,068	25,080	92,372	97,086	19,833
Meat					
Frozen Beef					
Boneless ⁴	1,536	49,378	47,907	131,951	34,707
Beef Cuts ⁵	261	2,256	3,179	21,794	2,334
Total Beef	1,797	51,634	51,086	153,745	37,041
Frozen Pork					
Ribs ⁶	347	1,752	11,872	24,143	7,034
Trimmings ⁷	32	604	9,748	21,700	1,344
Other ⁸	6,143	398	28,194	47,021	11,100
Other					
Veal		1,445	1,266	49	30
Lamb & Mutton		5,666	1,637	34	141
Total Other Meat		7,111	2,903	83	171

See footnote(s) at end of table.

--continued

**Stocks in Cold Storage: By Commodity, Region,
and United States, September 30, 2006 (continued)**

Commodity	East South Central	West South Central	Mountain	Pacific	US Total
	<i>1,000 Pounds</i>	<i>1,000 Pounds</i>	<i>1,000 Pounds</i>	<i>1,000 Pounds</i>	<i>1,000 Pounds</i>
Frozen Juice					
Orange Juice Concentrate	14	2,168	838	26,356	779,059
Other Juice Concentrate	57	12,349	6,124	64,691	233,124
Total Frozen Juice	71	14,517	6,962	91,047	1,012,183
Frozen Vegetables ³					
Asparagus		277	4	1,376	7,925
Limas, Fordhook		67		5,178	6,980
Limas, Baby		217	6	24,785	39,341
Green Beans, Reg. Cut		1,138	135	132,689	248,947
Green Beans, Fr. Style		131	6	17,778	39,249
Broccoli, Spears		12,039	7	2,989	29,554
Broccoli, Chopped & Cut		12,759	235	26,173	55,172
Brussels Sprouts		349		1,929	3,980
Carrots, Diced		1,011	45	39,467	61,018
Carrots, Other		8,388	95	53,763	82,544
Cauliflower		3,536	83	17,131	28,314
Corn, Cut		1,620	14,287	317,615	570,773
Corn, Cob		1,842	7,239	178,023	317,619
Mixed Vegetables		7,961	1,367	29,743	67,417
Okra		21,968		703	39,571
Onion Rings		426	337	168	6,211
Onions, Other		1,760	15,873	14,582	42,651
Blackeye Peas		410		251	4,581
Green Peas		3,266	8,802	213,395	360,188
Peas & Carrots Mixed		99	12	2,605	4,836
Spinach		9,207	3	47,674	79,456
Squash, Summer/Zucchini		5,817	137	24,658	67,664
Southern Greens		8,156		1,700	16,255
Other Vegetables		28,985	12,452	142,530	300,393
Total Vegetables		131,429	61,125	1,296,905	2,480,639
Potatoes					
French Fries	7,127	16,398	162,142	398,840	802,858
Other Frozen	1,739	21,047	47,021	78,456	200,351
Total Potatoes	8,866	37,445	209,163	477,296	1,003,209
Meat					
Frozen Beef					
Boneless ⁴	3,856	84,447	9,414	69,860	433,056
Beef Cuts ⁵	2,477	8,788	11,864	11,492	64,445
Total Beef	6,333	93,235	21,278	81,352	497,501
Frozen Pork					
Ribs ⁶	2,512	7,252	24	1,449	56,385
Trimming ⁷	461	2,877	92	1,105	37,963
Other ⁸	2,608	2,244	322	2,023	100,053
Other					
Veal		238		755	3,783
Lamb & Mutton		555	99	16,694	24,826
Total Other Meat		793	99	17,449	28,609

¹ East North Central combined with South Atlantic. Mountain and West North Central Combined with West South Central.

² Middle Atlantic combined with South Atlantic.

³ New England combined with Middle Atlantic. East South Central combined with South Atlantic.

⁴ Includes all boxed boneless beef, such as ground beef, roasts, steaks, loins, strips, rounds, trimmings, etc. Variety meats (edible offal), such as tongues, livers, hearts, kidneys, and other organs removed from slaughtered beef, are included as miscellaneous freezer stocks.

⁵ Includes all boxed primal beef cuts, bone-in.

⁶ Includes spareribs and backribs.

⁷ Includes 42% regular trimmings, 72% special trimmings, boneless picnic meat, jowls, neckbone trimmings, blade, cheek, head, and shank meat, etc. Packaged bacon, sausage, and processed items, such as hot dogs and luncheon meats, are included in miscellaneous cooler or freezer stocks.

⁸ Includes ears, tails, feet, neckbones and snouts.

Cold Storage Regions



Reliability of Cold Storage Estimates

Survey Procedures: Questionnaires are mailed about the 24th of each month to all operators on the list of approximately 1,400 public and private cold storage warehouses. In addition, apple data are obtained from special surveys and other sources (State Departments of Agriculture, U.S. Apple Association, etc.). All survey data represent stocks as of the end of the month.

Data are collected from warehouses artificially cooled to a temperature of 50 degrees Fahrenheit or lower, and whose food products are normally stored for 30 days or more. All food items in these facilities are reported regardless of the number of days stored at the time of the report. Also included are specialized storage facilities meeting the 30 day requirement, such as fruit houses, dairy manufacturing plants, frozen fruit, fruit juice, and vegetable processors, and poultry and meat packing plants. Excluded are stocks in space maintained by wholesalers, jobbers, distributors, chain stores, locker plants containing individual lockers, meat packer branch houses, and frozen food processors whose entire inventories are turned over more than once a month.

Estimating Procedures: Data for reporting firms are added to estimates for non-reporting firms to obtain regional and National totals. Estimates for non-reporting firms are obtained by multiplying the previous month's figure by a percent change from the previous month. The percent change is calculated for each item from totals of the current and previous month summed from firms that reported both months.

Revision Policy: Data are revised the following month based on late reports or corrected data. Final figures are published in the annual summary in February of the following year.

Reliability: Reports are received from 900 firms each month which represent about 70 percent of the total capacity. Firms that are not on the list or firms who have never reported are not represented in the data. Monthly data can vary due to different firms reporting month to month. Survey data are also subject to non-sampling errors such as omissions and mistakes in reporting and in processing the data. While these errors cannot be measured directly, they are minimized by carefully reviewing all reported data for consistency and reasonableness.

Information Contacts

Listed below are the commodity specialists in the Livestock Branch of the National Agricultural Statistics Service to contact for additional information.

Dan Kerestes, Chief, Livestock Branch	(202) 720-3570
Darin Jantzi, Head, Poultry and Specialty Commodities Section	(202) 720-3570
David Colwell - Cold Storage	(202) 720-8784
Fleming Gibson - Egg Products, Poultry Slaughter, Catfish Processing, Mink, Turkey Hatchery	(202) 690-3237
Darin Jantzi - Turkeys Raised, Catfish Production, Trout Production, Census of Aquaculture	(202) 720-3570
Sharyn Lavender - Layers, Eggs, Broiler Hatchery, Chicken Hatchery, Honey	(202) 720-3244

ACCESS TO REPORTS!!

For your convenience, there are several ways to obtain NASS reports, data products, and services:

INTERNET ACCESS

All NASS reports are available free of charge on the worldwide Internet. For access, connect to the Internet and go to the NASS Home Page at: www.nass.usda.gov.

E-MAIL SUBSCRIPTION

All NASS reports are available by subscription free of charge direct to your e-mail address. Starting with the NASS Home Page at www.nass.usda.gov, under the right navigation, *Receive reports by Email*, click on **National** or **State**. Follow the instructions on the screen.

PRINTED REPORTS OR DATA PRODUCTS

CALL OUR TOLL-FREE ORDER DESK: 800-999-6779 (U.S. and Canada)
Other areas, please call 703-605-6220 FAX: 703-605-6900
(Visa, MasterCard, check, or money order acceptable for payment.)

ASSISTANCE

For **assistance** with general agricultural statistics or further information about NASS or its products or services, contact the **Agricultural Statistics Hotline** at **800-727-9540**, 7:30 a.m. to 4:00 p.m. ET, or e-mail: nass@nass.usda.gov.

The U.S. Department of Agriculture (USDA) prohibits discrimination in all its programs and activities on the basis of race, color, national origin, age, disability, and where applicable, sex, marital status, familial status, parental status, religion, sexual orientation, genetic information, political beliefs, reprisal, or because all or part of an individual's income is derived from any public assistance program. (Not all prohibited bases apply to all programs.) Persons with disabilities who require alternative means for communication of program information (Braille, large print, audiotape, etc.) should contact USDA's TARGET Center at (202) 720-2600 (voice and TDD).

To file a complaint of discrimination, write to USDA, Director, Office of Civil Rights, 1400 Independence Avenue, S.W., Washington, D.C. 20250-9410, or call (800) 795-3272 (voice) or (202) 720-6382 (TDD). USDA is an equal opportunity provider and employer.