



United States
Department of
Agriculture

National
Agricultural
Statistics
Service



Cold Storage 2003 Summary

February 2004

Co St 1 (04) a

USDA



Update Alert
 Corrections to Drumsticks on page 15 for 2003 US Total from 112,282 to 15,253; 105,171 to 15,368;
 103,058 to 12,362; 98,154 to 15,618; 92,054 to 12,327; 94,540 to 10,857; 100,207 to 9,741 and 101,903
 to 9,847.

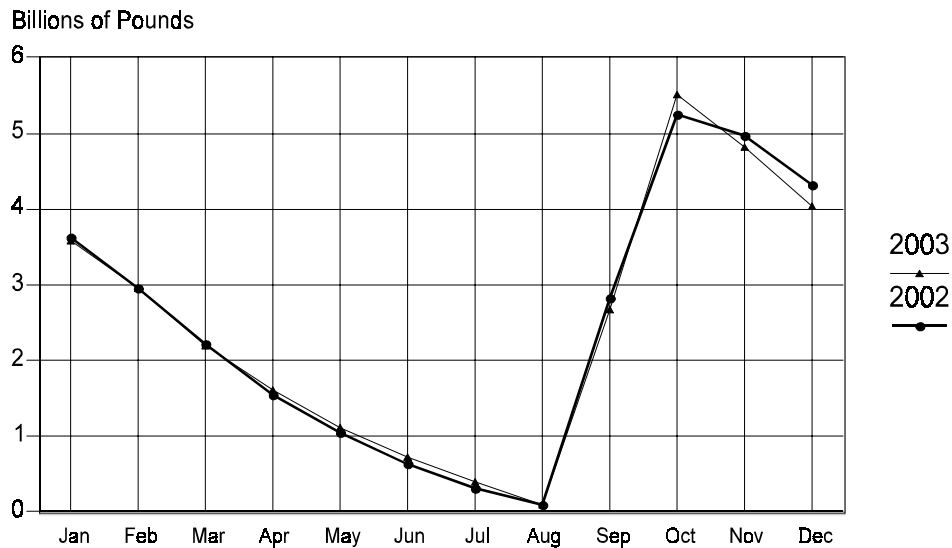
Table of Contents

	Page
Fresh Apples and Pears: Stocks in Cold Storage, United States, Monthly, 2003	2
Fresh Apples, Total: Stocks in Cold Storage by Region, Monthly, 2003	3
Fresh Apples, Total: Stocks in Cold Storage by State, Monthly, 2003	3
Nuts: Stocks in Cold Storage by Region and United States, Monthly, 2003	4
Dairy Products: Stocks in Cold Storage by Region and United States, Monthly, 2003	8
Frozen Eggs: Stocks in Cold Storage, United States, Monthly, 2003	13
Poultry: Stocks in Cold Storage by Region and United States, Monthly, 2003	14
Frozen Fruit: Stocks in Cold Storage by Region and United States, Monthly, 2003	24
Frozen Juice Concentrate: Stocks in Cold Storage by Region and United States, Monthly, 2003	32
Frozen Vegetables: Stocks in Cold Storage by Region and United States, Monthly, 2003	34
Potatoes: Stocks in Cold Storage by Region and United States, Monthly, 2003	48
Beef: Stocks in Cold Storage by Region and United States, Monthly, 2003	50
Pork: Stocks in Cold Storage by Region and United States, Monthly, 2003	52
Other Meat: Stocks in Cold Storage by Region and United States, Monthly, 2003	60
Canned and Total Meat: Stocks in Cold Storage by Region and United States, Monthly, 2003	62
Miscellaneous Cooler and Freezer: Stocks in Cold Storage, United States, Monthly, 2003	65
Total Commodities Stored: Stocks in Cold Storage, United States, Monthly, 2003	65
Stocks in Cold Storage: Blackberries, Red Raspberries, and Strawberries by Type of Pack, United States, Monthly, 2003	66
Cooler Space Occupied in Public General Warehouses: Percent of Total Usable Space by Region and United States, Monthly, 2003	67
Freezer Space Occupied in Public General Warehouses: Percent of Total Usable Space by Region and United States, Monthly, 2003	67
Methodology and Definitions	68

Fresh Apples and Pears: Stocks in Cold Storage, United States, Monthly, 2003

Commodity	Month					
	Jan	Feb	Mar	Apr	May	Jun
	<i>1,000 Pounds</i>	<i>1,000 Pounds</i>	<i>1,000 Pounds</i>	<i>1,000 Pounds</i>	<i>1,000 Pounds</i>	<i>1,000 Pounds</i>
Fresh Apples						
Regular Storage	401,890	270,100	140,004	100,622	22,691	18,737
Controlled Atmosphere	3,175,041	2,694,314	2,048,128	1,521,688	1,081,967	711,816
Total	3,576,931	2,964,414	2,188,132	1,622,310	1,104,658	730,553
Fresh Pears						
Bartlett	83	80	78	75	60	233
Other	246,145	191,166	134,766	87,504	35,985	13,249
Total	246,228	191,246	134,844	87,579	36,045	13,482
	Jul	Aug	Sep	Oct	Nov	Dec
	<i>1,000 Pounds</i>	<i>1,000 Pounds</i>	<i>1,000 Pounds</i>	<i>1,000 Pounds</i>	<i>1,000 Pounds</i>	<i>1,000 Pounds</i>
Fresh Apples						
Regular Storage	17,857	16,453	891,359	1,791,585	930,976	613,139
Controlled Atmosphere	392,505	90,025	1,787,301	3,716,010	3,897,469	3,501,609
Total	410,362	106,478	2,678,660	5,507,595	4,828,445	4,114,748
Fresh Pears						
Bartlett	12,779	37,806	120,840	81,492	45,648	17,893
Other	28	2,483	349,384	433,359	381,145	314,485
Total	12,807	40,289	470,224	514,851	426,793	332,378

Fresh Apples
Cold Storage Stocks, Year 2003
United States



Fresh Apples, Total: Stocks in Cold Storage by Region, Monthly, 2003

Region	Month					
	Jan	Feb	Mar	Apr	May	Jun
	<i>1,000 Pounds</i>	<i>1,000 Pounds</i>	<i>1,000 Pounds</i>	<i>1,000 Pounds</i>	<i>1,000 Pounds</i>	<i>1,000 Pounds</i>
New England	19,546	14,899	10,347	5,920	1,927	1,008
Middle Atlantic	364,216	297,329	230,600	167,211	109,505	54,715
East North Central	119,788	104,569	86,674	24,252	527	
West North Central	152					
South Atlantic	144,579	135,832	99,195	54,756	37,433	13,858
East South Central						
West South Central	4,563	4,178	3,638	3,315	2,766	2,094
Mountain	14,484	6,970	3,849	2,345	882	468
Pacific	2,909,603	2,400,637	1,753,829	1,364,511	951,618	658,410
	Jul ¹	Aug ¹	Sep ¹	Oct	Nov	Dec
	<i>1,000 Pounds</i>	<i>1,000 Pounds</i>	<i>1,000 Pounds</i>	<i>1,000 Pounds</i>	<i>1,000 Pounds</i>	<i>1,000 Pounds</i>
New England				52,524	40,427	31,193
Middle Atlantic				797,663	595,943	592,196
East North Central				477,265	414,921	334,237
West North Central				5,567	2,224	996
South Atlantic				288,282	261,030	229,517
East South Central				111		
West South Central				3,449	3,400	9,700
Mountain				50,899	41,328	26,589
Pacific				3,831,835	3,469,172	2,890,320

¹ Regional totals not shown to avoid disclosure of individual operations.

Fresh Apples, Total: Stocks in Cold Storage by State, Monthly, 2003

State	Month					
	Jan	Feb	Mar	Apr	May ¹	Jun ¹
	<i>1,000 Pounds</i>	<i>1,000 Pounds</i>	<i>1,000 Pounds</i>	<i>1,000 Pounds</i>	<i>1,000 Pounds</i>	<i>1,000 Pounds</i>
California	42,877	29,008	20,519	9,649		
Michigan	110,495	99,044	83,016	22,467		
New England	19,546	14,899	10,347	5,920		
New York	198,198	160,524	120,624	89,460		
Ohio	6,060	3,415	2,045	645		
Oregon	20,680	21,629	17,526	13,508		
Pennsylvania	165,953	136,805	109,976	77,751		
Virginia	98,141	79,771	63,666	34,508		
Washington	2,846,046	2,350,000	1,715,784	1,341,354		
West Virginia	36,068	47,121	29,794	15,814		
Other States	32,867	22,198	14,835	11,234		
	Jul ¹	Aug ¹	Sep ¹	Oct	Nov	Dec
	<i>1,000 Pounds</i>	<i>1,000 Pounds</i>	<i>1,000 Pounds</i>	<i>1,000 Pounds</i>	<i>1,000 Pounds</i>	<i>1,000 Pounds</i>
California				91,668	73,011	57,747
Michigan				438,345	389,636	316,003
New England				52,524	40,427	31,193
New York				506,100	320,964	348,012
Ohio				23,290	15,360	12,065
Oregon				40,167	33,305	25,839
Pennsylvania				291,284	274,832	244,184
Virginia				161,547	140,958	131,601
Washington				3,700,000	3,362,856	2,806,734
West Virginia				79,214	81,208	73,590
Other States				123,456	95,888	67,780

¹ State totals not shown to avoid disclosure of individual operations.

Nuts: Stocks in Cold Storage by Region and United States, Monthly, 2003

Commodity and Month	Region				
	New England	Middle Atlantic	East North Central	West North Central	South Atlantic
	<i>1,000 Pounds</i>	<i>1,000 Pounds</i>	<i>1,000 Pounds</i>	<i>1,000 Pounds</i>	<i>1,000 Pounds</i>
Shelled Peanuts					
Jan		17	20	17	159,921
Feb		2	21	18	174,375
Mar		2	22	19	187,138
Apr		1,011	24	21	206,256
May		683	424	1,297	225,047
Jun		683	475	285	231,021
Jul		683	523	20	198,705
Aug		682	468	15	119,693
Sep		704	612	10	70,141
Oct		706	827	11	99,364
Nov		712	986	14	118,037
Dec		694	517	15	127,223
Pecans ¹					
Jan		69			13,741
Feb		62			14,954
Mar		73			15,385
Apr		74			15,399
May		84			14,020
Jun		128			13,502
Jul		167			11,304
Aug		193			10,318
Sep		144			7,659
Oct		70			5,779
Nov		71			5,991
Dec		61			7,042
Other Shelled					
Jan					
Feb					
Mar					
Apr					
May					
Jun					
Jul					
Aug					
Sep					
Oct					
Nov					
Dec					
Total Shelled Nuts					
Jan					
Feb					
Mar					
Apr					
May					
Jun					
Jul					
Aug					
Sep					
Oct					
Nov					
Dec					

See footnote(s) at end of table.

--continued

**Nuts: Stocks in Cold Storage by Region and
United States, Monthly, 2003 (continued)**

Commodity and Month	Region				
	East South Central	West South Central	Mountain	Pacific	US Total
	<i>1,000 Pounds</i>	<i>1,000 Pounds</i>	<i>1,000 Pounds</i>	<i>1,000 Pounds</i>	<i>1,000 Pounds</i>
Shelled					
Peanuts					
Jan	25,196	98,779	95	933	284,978
Feb	28,965	101,760	91	924	306,156
Mar	26,311	104,927	89	338	318,846
Apr	30,033	103,160	98	403	341,006
May	31,884	139,522	107	356	399,320
Jun	36,652	130,995	98	188	400,397
Jul	33,520	133,644	88	180	367,363
Aug	22,763	92,663	75	147	236,506
Sep	22,581	45,077	68	98	139,291
Oct	32,395	34,560	71	192	168,126
Nov	18,149	54,343	73	130	192,444
Dec	22,103	70,712	75	136	221,475
Pecans ¹					
Jan	815	22,918		138	37,681
Feb	957	23,047		133	39,153
Mar	1,007	23,101		140	39,706
Apr	1,360	24,766		172	41,771
May	1,328	26,833		95	42,360
Jun	1,206	28,328		94	43,258
Jul	980	25,240		150	37,841
Aug	659	20,830		127	32,127
Sep	356	16,724		78	24,961
Oct	260	10,242		66	16,417
Nov	215	9,952		118	16,347
Dec	296	10,512		81	17,992
Other Shelled					
Jan					122,161
Feb					137,283
Mar					151,658
Apr					165,412
May					174,640
Jun					153,827
Jul					129,633
Aug					82,948
Sep					91,011
Oct					97,314
Nov					113,896
Dec					121,113
Total Shelled					
Nuts					
Jan					444,820
Feb					482,592
Mar					510,210
Apr					548,189
May					616,320
Jun					597,482
Jul					534,837
Aug					351,581
Sep					255,263
Oct					281,857
Nov					322,687
Dec					360,580

See footnote(s) at end of table.

--continued

**Nuts: Stocks in Cold Storage by Region and
United States, Monthly, 2003 (continued)**

Commodity and Month	Region				
	New England	Middle Atlantic	East North Central	West North Central	South Atlantic
	<i>1,000 Pounds</i>	<i>1,000 Pounds</i>	<i>1,000 Pounds</i>	<i>1,000 Pounds</i>	<i>1,000 Pounds</i>
In-Shell					
Peanuts					
Jan					
Feb					
Mar					
Apr					
May					
Jun					
Jul					
Aug					
Sep					
Oct					
Nov					
Dec					
Pecans ¹					
Jan					20,634
Feb					19,245
Mar					15,281
Apr					8,434
May					8,355
Jun					7,433
Jul					6,990
Aug					4,407
Sep					1,724
Oct					3,153
Nov					19,553
Dec					46,709
Other In-Shell					
Jan					
Feb					
Mar					
Apr					
May					
Jun					
Jul					
Aug					
Sep					
Oct					
Nov					
Dec					
Total In-Shell					
Nuts					
Jan					
Feb					
Mar					
Apr					
May					
Jun					
Jul					
Aug					
Sep					
Oct					
Nov					
Dec					

See footnote(s) at end of table.

--continued

**Nuts: Stocks in Cold Storage by Region and
United States, Monthly, 2003 (continued)**

Commodity and Month	Region				
	East South Central	West South Central	Mountain	Pacific	US Total
	<i>1,000 Pounds</i>	<i>1,000 Pounds</i>	<i>1,000 Pounds</i>	<i>1,000 Pounds</i>	<i>1,000 Pounds</i>
In-Shell					
Peanuts					
Jan					12,504
Feb					15,556
Mar					16,736
Apr					17,274
May					22,296
Jun					23,047
Jul					24,235
Aug					13,674
Sep					7,412
Oct					10,329
Nov					14,972
Dec					17,074
Pecans ¹					
Jan	3,259	75,336			99,229
Feb	2,727	83,499			105,471
Mar	2,241	75,332			92,854
Apr	2,061	64,130			74,625
May	2,027	47,895			58,277
Jun	2,087	37,776			47,296
Jul	2,084	19,773			28,847
Aug	1,084	8,532			14,023
Sep	1,803	4,723			8,250
Oct	1,003	6,547			10,703
Nov	2,340	28,734			50,627
Dec	5,647	88,681			141,037
Other In-Shell					
Jan					7,872
Feb					7,311
Mar					9,429
Apr					7,983
May					7,412
Jun					18,376
Jul					16,846
Aug					11,187
Sep					15,023
Oct					13,192
Nov					9,727
Dec					10,391
Total In-Shell					
Nuts					
Jan					119,605
Feb					128,338
Mar					119,019
Apr					99,882
May					87,985
Jun					88,719
Jul					69,928
Aug					38,884
Sep					30,685
Oct					34,224
Nov					75,326
Dec					168,502

¹ East North Central combined with South Atlantic. Mountain and West North Central combined with West South Central.

**Dairy Products: Stocks in Cold Storage by Region and
United States, Monthly, 2003**

Commodity and Month	Region				
	New England	Middle Atlantic	East North Central	West North Central	South Atlantic
	<i>1,000 Pounds</i>	<i>1,000 Pounds</i>	<i>1,000 Pounds</i>	<i>1,000 Pounds</i>	<i>1,000 Pounds</i>
Butter (Total)					
Jan					
Feb					
Mar					
Apr					
May					
Jun					
Jul					
Aug					
Sep					
Oct					
Nov					
Dec					
Butter (Govt Owned)					
Jan					
Feb					
Mar					
Apr					
May					
Jun					
Jul					
Aug					
Sep					
Oct					
Nov					
Dec					

--continued

**Dairy Products: Stocks in Cold Storage by Region and
United States, Monthly, 2003 (continued)**

Commodity and Month	Region				US Total
	East South Central	West South Central	Mountain	Pacific	
	<i>1,000 Pounds</i>	<i>1,000 Pounds</i>	<i>1,000 Pounds</i>	<i>1,000 Pounds</i>	<i>1,000 Pounds</i>
Butter (Total)					
Jan					204,828
Feb					239,879
Mar					244,958
Apr					263,735
May					297,959
Jun					301,425
Jul					283,879
Aug					253,913
Sep					207,175
Oct					170,154
Nov					122,544
Dec					99,613
Butter (Govt Owned)					
Jan					349
Feb					1,391
Mar					2,576
Apr					5,089
May					8,938
Jun					10,779
Jul					11,183
Aug					9,567
Sep					10,172
Oct					11,084
Nov					8,701
Dec					6,172

--continued

**Dairy Products: Stocks in Cold Storage by Region and
United States, Monthly, 2003 (continued)**

Commodity and Month	Region				
	New England	Middle Atlantic	East North Central	West North Central	South Atlantic
	<i>1,000 Pounds</i>	<i>1,000 Pounds</i>	<i>1,000 Pounds</i>	<i>1,000 Pounds</i>	<i>1,000 Pounds</i>
Natural Cheese					
American (Total)					
Jan	19,157	57,436	210,620	120,179	367
Feb	21,737	58,459	222,017	124,574	104
Mar	21,175	59,548	216,171	121,803	118
Apr	21,422	60,470	218,136	121,113	118
May	22,271	60,021	217,011	128,536	546
Jun	22,292	57,689	222,596	135,337	561
Jul	22,324	54,530	217,977	140,622	130
Aug	22,064	53,684	217,648	131,169	140
Sep	21,153	49,960	212,155	117,460	113
Oct	20,202	48,260	201,472	107,907	116
Nov	20,496	45,229	180,073	109,439	100
Dec	21,455	48,148	188,614	115,827	457
American (Govt Owned)					
Jan					
Feb					
Mar					
Apr					
May					
Jun					
Jul					
Aug					
Sep					
Oct					
Nov					
Dec					
Swiss					
Jan					
Feb					
Mar					
Apr					
May					
Jun					
Jul					
Aug					
Sep					
Oct					
Nov					
Dec					
Other Natural Cheese					
Jan	247	32,423	117,243	53,918	2,486
Feb	258	18,624	119,315	53,326	1,856
Mar	276	17,502	124,026	55,616	1,883
Apr	204	17,260	129,114	55,927	1,748
May	213	14,040	132,763	59,332	2,111
Jun	314	15,679	129,654	58,174	2,870
Jul	328	17,981	132,063	57,392	2,300
Aug	234	17,607	130,396	57,392	1,938
Sep	190	16,128	128,341	56,492	2,101
Oct	256	14,417	121,963	53,099	1,892
Nov	383	14,631	116,886	53,353	1,827
Dec	364	14,549	120,031	52,413	1,838

--continued

**Dairy Products: Stocks in Cold Storage by Region and
United States, Monthly, 2003 (continued)**

Commodity and Month	Region				
	East South Central	West South Central	Mountain	Pacific	US Total
	<i>1,000 Pounds</i>	<i>1,000 Pounds</i>	<i>1,000 Pounds</i>	<i>1,000 Pounds</i>	<i>1,000 Pounds</i>
Natural Cheese					
American (Total)					
Jan	538	1,428	11,635	93,554	514,914
Feb	433	1,661	13,866	95,982	538,833
Mar	230	1,592	14,793	95,368	530,798
Apr	269	1,372	13,946	97,872	534,718
May	375	1,731	13,506	94,516	538,513
Jun	265	1,763	15,337	94,144	549,984
Jul	161	3,260	19,397	94,054	552,455
Aug	213	4,431	20,515	96,763	546,627
Sep	211	4,322	18,240	93,231	516,845
Oct	188	3,345	16,562	93,046	491,098
Nov	181	1,979	17,429	92,300	467,226
Dec	210	1,502	18,981	96,225	491,419
American (Govt Owned)					
Jan					280
Feb					368
Mar					1,602
Apr					2,974
May					2,543
Jun					3,757
Jul					6,141
Aug					8,807
Sep					8,836
Oct					9,473
Nov					6,918
Dec					9,614
Swiss					
Jan					25,060
Feb					23,151
Mar					25,323
Apr					25,801
May					26,596
Jun					26,042
Jul					28,896
Aug					22,172
Sep					22,884
Oct					22,044
Nov					24,083
Dec					26,237
Other Natural Cheese					
Jan	216	205	839	13,664	221,241
Feb	177	246	1,934	12,288	208,024
Mar	1,751	242	1,873	11,985	215,154
Apr	1,834	208	1,678	12,613	220,586
May	1,846	165	2,055	13,403	225,928
Jun	1,795	184	2,187	13,215	224,072
Jul	1,860	138	2,201	13,349	227,612
Aug	1,903	147	2,910	12,889	225,416
Sep	2,087	126	3,666	13,293	222,424
Oct	2,205	104	3,614	11,714	209,264
Nov	2,139	97	3,576	11,340	204,232
Dec	2,162	107	3,706	11,560	206,730

--continued

**Dairy Products: Stocks in Cold Storage by Region and
United States, Monthly, 2003 (continued)**

Commodity and Month	Region				
	New England	Middle Atlantic	East North Central	West North Central	South Atlantic
	<i>1,000 Pounds</i>	<i>1,000 Pounds</i>	<i>1,000 Pounds</i>	<i>1,000 Pounds</i>	<i>1,000 Pounds</i>
Total Natural Cheese					
Jan					
Feb					
Mar					
Apr					
May					
Jun					
Jul					
Aug					
Sep					
Oct					
Nov					
Dec					

--continued

**Dairy Products: Stocks in Cold Storage by Region and
United States, Monthly, 2003 (continued)**

Commodity and Month	Region				
	East South Central	West South Central	Mountain	Pacific	US Total
	<i>1,000 Pounds</i>	<i>1,000 Pounds</i>	<i>1,000 Pounds</i>	<i>1,000 Pounds</i>	<i>1,000 Pounds</i>
Total Natural Cheese					
Jan					761,215
Feb					770,008
Mar					771,275
Apr					781,105
May					791,037
Jun					800,098
Jul					808,963
Aug					794,215
Sep					762,153
Oct					722,406
Nov					695,541
Dec					724,386

Frozen Eggs: Stocks in Cold Storage, United States, Monthly, 2003

State	Month					
	Jan	Feb	Mar	Apr	May	Jun
	<i>1,000 Pounds</i>	<i>1,000 Pounds</i>	<i>1,000 Pounds</i>	<i>1,000 Pounds</i>	<i>1,000 Pounds</i>	<i>1,000 Pounds</i>
Frozen Eggs						
Whites	1,818	2,571	2,519	2,433	2,664	2,659
Yolks	924	1,169	1,409	1,078	815	897
Whole & Mixed	8,778	9,463	9,765	8,883	10,548	10,725
Unclassified	3,820	3,924	3,262	3,349	3,672	3,670
Total	15,340	17,127	16,955	15,743	17,699	17,951
	Jul	Aug	Sep	Oct	Nov	Dec
	<i>1,000 Pounds</i>	<i>1,000 Pounds</i>	<i>1,000 Pounds</i>	<i>1,000 Pounds</i>	<i>1,000 Pounds</i>	<i>1,000 Pounds</i>
Frozen Eggs						
Whites	2,684	2,680	2,657	2,653	2,654	2,972
Yolks	1,155	1,006	1,044	1,050	843	1,242
Whole & Mixed	11,104	11,195	10,374	9,916	8,290	10,805
Unclassified	3,627	3,163	2,565	3,235	3,122	3,017
Total	18,570	18,044	16,640	16,854	14,909	18,036

**Poultry: Stocks in Cold Storage By Region and
United States, Monthly, 2003**

Commodity and Month	Region				
	New England	Middle Atlantic	East North Central	West North Central	South Atlantic
	<i>1,000 Pounds</i>	<i>1,000 Pounds</i>	<i>1,000 Pounds</i>	<i>1,000 Pounds</i>	<i>1,000 Pounds</i>
Chickens					
Broilers, Fryers & Roasters (Whole Birds)					
Jan	11	1,059	103	1,445	6,046
Feb		933	128	1,052	5,819
Mar		905	148	1,001	5,685
Apr		1,141	117	993	6,760
May		1,212	129	1,513	7,920
Jun		1,304	142	1,698	8,724
Jul		1,462	249	767	12,343
Aug	52	1,535	203	844	14,621
Sep	4	1,512	305	926	10,243
Oct		1,513	263	806	9,643
Nov	9	1,452	232	799	4,650
Dec	21	1,595	207	843	3,893
Hens (Whole Birds)					
Jan	12	301	295	207	1,783
Feb	12	268	284	105	1,821
Mar	13	231	268	114	2,357
Apr	12	118	174	112	1,979
May	14	152	180	132	2,053
Jun	14	183	208	130	854
Jul	15	162	646	149	998
Aug	22	206	454	211	2,256
Sep	22	193	380	213	1,519
Oct	18	190	42	195	1,038
Nov	17	190	48	208	620
Dec	17	115	348	170	424
Breast & Breast Meat ¹					
Jan					
Feb					
Mar					
Apr					
May					
Jun					
Jul					
Aug					
Sep					
Oct					
Nov					
Dec					
Drumsticks ¹					
Jan					
Feb					
Mar					
Apr					
May					
Jun					
Jul					
Aug					
Sep					
Oct					
Nov					
Dec					

See footnote(s) at end of table.

--continued

**Poultry: Stocks in Cold Storage by Region and
United States, Monthly, 2003 (continued)**

Commodity and Month	Region				
	East South Central	West South Central	Mountain	Pacific	US Total
	<i>1,000 Pounds</i>	<i>1,000 Pounds</i>	<i>1,000 Pounds</i>	<i>1,000 Pounds</i>	<i>1,000 Pounds</i>
Chickens					
Broilers, Fryers & Roasters (Whole Birds)					
Jan	3,551	10,905	348	2,195	25,663
Feb	2,884	10,948	365	2,284	24,413
Mar	2,062	10,016	379	2,514	22,710
Apr	3,677	13,025	472	3,266	29,451
May	2,455	14,005	515	3,095	30,844
Jun	3,108	10,511	547	3,886	29,920
Jul	3,590	10,566	563	2,920	32,460
Aug	3,836	10,847	603	2,278	34,819
Sep	4,363	10,734	630	2,137	30,854
Oct	3,419	11,317	624	2,261	29,846
Nov	3,384	10,356	627	2,148	23,657
Dec	3,378	11,655	241	2,197	24,030
Hens (Whole Birds)					
Jan	456	424		1,069	4,547
Feb	425	601		949	4,465
Mar	410	1,131	35	942	5,501
Apr	502	1,030		830	4,757
May	524	1,089		836	4,980
Jun	443	974		705	3,511
Jul	492	980		298	3,740
Aug	860	945	67	705	5,726
Sep	1,050	1,069	54	696	5,196
Oct	1,265	900	54	689	4,391
Nov	1,164	786	27	612	3,672
Dec	597	827		704	3,202
Breast & Breast Meat ¹					
Jan					
Feb					
Mar					
Apr					
May					112,282
Jun					105,171
Jul					103,058
Aug					98,154
Sep					92,054
Oct					94,540
Nov					100,207
Dec					101,903
Drumsticks ¹					
Jan					
Feb					
Mar					
Apr					
May					15,253
Jun					15,368
Jul					12,362
Aug					15,618
Sep					12,327
Oct					10,857
Nov					9,741
Dec					9,847

See footnote(s) at end of table.

--continued

**Poultry: Stocks in Cold Storage By Region and
United States, Monthly, 2003 (continued)**

Commodity and Month	Region				
	New England	Middle Atlantic	East North Central	West North Central	South Atlantic
	<i>1,000 Pounds</i>	<i>1,000 Pounds</i>	<i>1,000 Pounds</i>	<i>1,000 Pounds</i>	<i>1,000 Pounds</i>
Leg Quarters ¹					
Jan					
Feb					
Mar					
Apr					
May					
Jun					
Jul					
Aug					
Sep					
Oct					
Nov					
Dec					
Legs ¹					
Jan					
Feb					
Mar					
Apr					
May					
Jun					
Jul					
Aug					
Sep					
Oct					
Nov					
Dec					
Thigh & Thigh Quarters ¹					
Jan					
Feb					
Mar					
Apr					
May					
Jun					
Jul					
Aug					
Sep					
Oct					
Nov					
Dec					
Thigh Meat ¹					
Jan					
Feb					
Mar					
Apr					
May					
Jun					
Jul					
Aug					
Sep					
Oct					
Nov					
Dec					

See footnote(s) at end of table.

--continued

**Poultry: Stocks in Cold Storage by Region and
United States, Monthly, 2003 (continued)**

Commodity and Month	Region				
	East South Central	West South Central	Mountain	Pacific	US Total
	<i>1,000 Pounds</i>	<i>1,000 Pounds</i>	<i>1,000 Pounds</i>	<i>1,000 Pounds</i>	<i>1,000 Pounds</i>
Leg Quarters ¹					
Jan					
Feb					
Mar					
Apr					
May					71,977
Jun					83,302
Jul					67,957
Aug					69,656
Sep					85,960
Oct					88,445
Nov					65,006
Dec					85,046
Legs ¹					
Jan					
Feb					
Mar					
Apr					
May					10,845
Jun					11,567
Jul					13,062
Aug					12,934
Sep					9,503
Oct					12,515
Nov					10,100
Dec					15,339
Thigh & Thigh Quarters ¹					
Jan					
Feb					
Mar					
Apr					
May					6,243
Jun					6,406
Jul					6,491
Aug					7,698
Sep					3,861
Oct					3,295
Nov					5,340
Dec					5,066
Thigh Meat ¹					
Jan					
Feb					
Mar					
Apr					
May					17,170
Jun					14,892
Jul					13,730
Aug					14,381
Sep					13,120
Oct					14,564
Nov					18,872
Dec					23,384

See footnote(s) at end of table.

--continued

**Poultry: Stocks in Cold Storage By Region and
United States, Monthly, 2003 (continued)**

Commodity and Month	Region				
	New England	Middle Atlantic	East North Central	West North Central	South Atlantic
	<i>1,000 Pounds</i>	<i>1,000 Pounds</i>	<i>1,000 Pounds</i>	<i>1,000 Pounds</i>	<i>1,000 Pounds</i>
Wings ¹					
Jan					
Feb					
Mar					
Apr					
May					
Jun					
Jul					
Aug					
Sep					
Oct					
Nov					
Dec					
Paws & Feet ¹					
Jan					
Feb					
Mar					
Apr					
May					
Jun					
Jul					
Aug					
Sep					
Oct					
Nov					
Dec					
Other Chickens (Parts, Processed, etc.) ¹					
Jan					
Feb					
Mar					
Apr					
May					
Jun					
Jul					
Aug					
Sep					
Oct					
Nov					
Dec					
Total Chicken					
Jan	1,319	20,492	13,958	27,464	226,389
Feb	1,551	19,156	14,615	24,958	207,364
Mar	1,707	17,299	14,989	26,037	196,686
Apr	1,370	18,401	15,142	34,853	222,214
May	1,862	16,040	15,572	33,748	215,738
Jun	1,835	16,329	16,513	33,115	208,271
Jul	1,610	16,919	16,214	32,523	216,237
Aug	1,685	17,158	14,986	32,107	216,095
Sep	1,454	18,379	15,942	31,803	209,182
Oct	1,452	16,027	15,417	32,865	203,468
Nov	1,702	16,187	14,741	27,810	180,881
Dec	1,480	16,416	14,317	32,655	198,092

See footnote(s) at end of table.

--continued

**Poultry: Stocks in Cold Storage by Region and
United States, Monthly, 2003 (continued)**

Commodity and Month	Region				
	East South Central	West South Central	Mountain	Pacific	US Total
	<i>1,000 Pounds</i>	<i>1,000 Pounds</i>	<i>1,000 Pounds</i>	<i>1,000 Pounds</i>	<i>1,000 Pounds</i>
Wings ¹					
Jan					
Feb					
Mar					
Apr					
May					36,435
Jun					31,314
Jul					33,850
Aug					30,273
Sep					30,988
Oct					31,128
Nov					29,757
Dec					23,417
Paws & Feet ¹					
Jan					
Feb					
Mar					
Apr					
May					10,230
Jun					10,139
Jul					10,583
Aug					10,958
Sep					8,650
Oct					9,562
Nov					7,792
Dec					11,442
Other Chickens (Parts, Processed, etc.) ¹					
Jan					
Feb					
Mar					
Apr					381,291
May					370,982
Jun					341,669
Jul					338,297
Aug					317,481
Sep					311,988
Oct					301,521
Nov					295,124
Dec					308,796
Total Chicken					
Jan	128,578	251,895	2,400	49,982	722,477
Feb	120,564	235,610	2,391	46,576	672,785
Mar	106,234	228,952	2,800	47,279	641,983
Apr	131,397	255,922	2,763	49,953	732,015
May	116,285	243,202	3,251	41,543	687,241
Jun	126,803	204,226	2,818	43,349	653,259
Jul	113,660	194,040	2,659	41,728	635,590
Aug	110,022	183,602	2,581	39,462	617,698
Sep	122,116	171,649	2,676	31,300	604,501
Oct	123,210	175,912	2,702	29,611	600,664
Nov	115,340	180,194	2,840	29,573	569,268
Dec	131,621	184,168	3,779	28,944	611,472

¹ Data series began in May 2003.

**Poultry: Stocks in Cold Storage by Region and
United States, Monthly, 2003 (continued)**

Commodity and Month	Region				
	New England	Middle Atlantic	East North Central	West North Central	South Atlantic
	<i>1,000 Pounds</i>	<i>1,000 Pounds</i>	<i>1,000 Pounds</i>	<i>1,000 Pounds</i>	<i>1,000 Pounds</i>
Turkeys					
Toms (Whole Carcasses)					
Jan	405	3,502	1,134	22,673	19,066
Feb	469	4,025	1,544	31,649	26,744
Mar	375	3,976	2,067	40,634	38,991
Apr	429	4,091	2,058	41,452	43,299
May	839	12,409	3,535	40,483	49,047
Jun	1,656	16,957	5,933	45,538	55,119
Jul	2,505	18,767	7,749	43,623	58,981
Aug	3,588	22,628	12,584	41,864	57,823
Sep	3,636	25,031	14,259	38,561	58,016
Oct	4,178	25,456	8,735	28,634	49,539
Nov	830	5,564	1,201	11,819	18,501
Dec	507	3,083	1,106	17,831	21,449
Hens (Whole Carcasses)					
Jan	755	533	297	13,979	11,094
Feb	712	783	514	18,777	13,288
Mar	589	559	729	17,665	13,655
Apr	645	1,074	1,056	16,696	15,775
May	1,555	2,559	1,500	18,815	19,491
Jun	1,916	3,038	2,554	21,088	21,638
Jul	2,941	4,359	5,717	24,111	25,035
Aug	3,635	4,956	7,171	22,940	24,816
Sep	4,222	5,149	8,074	20,732	25,407
Oct	3,968	5,022	8,597	13,844	22,605
Nov	394	847	1,153	7,657	10,161
Dec	394	792	150	6,554	9,546
Total Whole Turkeys					
Jan	1,160	4,035	1,431	36,652	30,160
Feb	1,181	4,808	2,058	50,426	40,032
Mar	964	4,535	2,796	58,299	52,646
Apr	1,074	5,165	3,114	58,148	59,074
May	2,394	14,968	5,035	59,298	68,538
Jun	3,572	19,995	8,487	66,626	76,757
Jul	5,446	23,126	13,466	67,734	84,016
Aug	7,223	27,584	19,755	64,804	82,639
Sep	7,858	30,180	22,333	59,293	83,423
Oct	8,146	30,478	17,332	42,478	72,144
Nov	1,224	6,411	2,354	19,476	28,662
Dec	901	3,875	1,256	24,385	30,995
All Other (Parts, Processed, etc.)					
Jan	537	11,637	22,933	65,692	135,795
Feb	767	11,150	22,086	69,031	136,800
Mar	749	11,236	24,923	73,480	147,059
Apr	772	14,408	25,103	77,567	143,371
May	720	11,945	28,708	81,915	179,698
Jun	592	11,761	31,174	82,963	186,216
Jul	525	12,840	32,899	77,234	163,054
Aug	739	14,412	31,324	72,054	155,090
Sep	926	14,042	25,011	59,587	118,730
Oct	1,216	12,117	23,090	54,811	107,519
Nov	813	9,081	19,501	49,031	93,769
Dec	771	8,712	19,141	53,003	100,050

--continued

**Poultry: Stocks in Cold Storage by Region and
United States, Monthly, 2003 (continued)**

Commodity and Month	Region				
	East South Central	West South Central	Mountain	Pacific	US Total
	<i>1,000 Pounds</i>	<i>1,000 Pounds</i>	<i>1,000 Pounds</i>	<i>1,000 Pounds</i>	<i>1,000 Pounds</i>
Turkeys					
Toms (Whole Carcasses)					
Jan	61	7,159	12,533	29,480	96,013
Feb	60	11,312	7,804	34,235	117,842
Mar	273	15,876	7,949	38,164	148,305
Apr	302	20,264	7,240	40,194	159,329
May	912	26,338	8,818	41,942	184,323
Jun	1,586	31,532	12,669	42,297	213,287
Jul	2,353	35,266	15,501	40,265	225,010
Aug	2,585	34,696	15,008	35,282	226,058
Sep	3,369	36,628	16,729	31,003	227,232
Oct	3,184	32,833	15,073	31,305	198,937
Nov	965	16,605	8,411	13,158	77,054
Dec	443	17,657	5,415	8,327	75,818
Hens (Whole Carcasses)					
Jan	520	18,394	1,000	17,920	64,492
Feb	596	22,920	2,017	18,360	77,967
Mar	868	31,477	1,911	21,403	88,856
Apr	901	35,967	3,092	26,595	101,801
May	1,388	40,360	7,008	22,998	115,674
Jun	1,571	46,808	5,339	26,598	130,550
Jul	3,972	49,030	6,791	28,138	150,094
Aug	5,179	46,471	7,027	26,657	148,852
Sep	7,065	47,500	8,079	25,515	151,743
Oct	5,761	41,237	5,151	23,068	129,253
Nov	1,720	22,316	1,632	8,386	54,266
Dec	728	24,464	435	4,473	47,536
Total Whole Turkeys					
Jan	581	25,553	13,533	47,400	160,505
Feb	656	34,232	9,821	52,595	195,809
Mar	1,141	47,353	9,860	59,567	237,161
Apr	1,203	56,231	10,332	66,789	261,130
May	2,300	66,698	15,826	64,940	299,997
Jun	3,157	78,340	18,008	68,895	343,837
Jul	6,325	84,296	22,292	68,403	375,104
Aug	7,764	81,167	22,035	61,939	374,910
Sep	10,434	84,128	24,808	56,518	378,975
Oct	8,945	74,070	20,224	54,373	328,190
Nov	2,685	38,921	10,043	21,544	131,320
Dec	1,171	42,121	5,850	12,800	123,354
All Other (Parts, Processed, etc.)					
Jan	1,197	31,898	10,204	11,476	291,369
Feb	1,078	30,742	10,611	14,663	296,928
Mar	1,264	32,940	9,827	10,639	312,117
Apr	874	28,328	10,931	10,982	312,336
May	948	31,348	11,894	11,666	358,842
Jun	1,791	35,370	12,395	12,113	374,375
Jul	1,705	33,982	13,095	12,105	347,439
Aug	1,701	31,660	12,362	12,250	331,592
Sep	2,404	26,720	11,160	9,980	268,560
Oct	3,023	22,534	11,896	18,287	254,493
Nov	3,208	19,232	9,119	15,594	219,348
Dec	1,083	20,215	11,511	16,199	230,685

--continued

**Poultry: Stocks in Cold Storage by Region and
United States, Monthly, 2003 (continued)**

Commodity and Month	Region				
	New England	Middle Atlantic	East North Central	West North Central	South Atlantic
	<i>1,000 Pounds</i>	<i>1,000 Pounds</i>	<i>1,000 Pounds</i>	<i>1,000 Pounds</i>	<i>1,000 Pounds</i>
Total Turkey					
Jan	1,697	15,672	24,364	102,344	165,955
Feb	1,948	15,958	24,144	119,457	176,832
Mar	1,713	15,771	27,719	131,779	199,705
Apr	1,846	19,573	28,217	135,715	202,445
May	3,114	26,913	33,743	141,213	248,236
Jun	4,164	31,756	39,661	149,589	262,973
Jul	5,971	35,966	46,365	144,968	247,070
Aug	7,962	41,996	51,079	136,858	237,729
Sep	8,784	44,222	47,344	118,880	202,153
Oct	9,362	42,595	40,422	97,289	179,663
Nov	2,037	15,492	21,855	68,507	122,431
Dec	1,672	12,587	20,397	77,388	131,045
Ducks					
Jan		392	4,650		25
Feb	2	441	4,512		30
Mar	1	427	5,210		28
Apr		463	5,403		11
May		425	5,351	1	11
Jun		427	5,315	1	169
Jul		408	4,260	1	167
Aug		391	3,294	1	173
Sep		413	2,137	1	193
Oct		436	1,716		350
Nov		443	940	1	234
Dec		368	554		119
Total Poultry					
Jan	3,016	36,556	42,972	129,808	392,369
Feb	3,501	35,555	43,271	144,415	384,226
Mar	3,421	33,497	47,918	157,816	396,419
Apr	3,216	38,437	48,762	170,568	424,670
May	4,976	43,378	54,666	174,962	463,985
Jun	5,999	48,512	61,489	182,705	471,413
Jul	7,581	53,293	66,839	177,492	463,474
Aug	9,647	59,545	69,359	168,966	453,997
Sep	10,238	63,014	65,423	150,684	411,528
Oct	10,814	59,058	57,555	130,154	383,481
Nov	3,739	32,122	37,536	96,318	303,546
Dec	3,152	29,371	35,268	110,043	329,256

--continued

**Poultry: Stocks in Cold Storage by Region and
United States, Monthly, 2003 (continued)**

Commodity and Month	Region				
	East South Central	West South Central	Mountain	Pacific	US Total
	<i>1,000 Pounds</i>	<i>1,000 Pounds</i>	<i>1,000 Pounds</i>	<i>1,000 Pounds</i>	<i>1,000 Pounds</i>
Total Turkey					
Jan	1,778	57,451	23,737	58,876	451,874
Feb	1,734	64,974	20,432	67,258	492,737
Mar	2,405	80,293	19,687	70,206	549,278
Apr	2,077	84,559	21,263	77,771	573,466
May	3,248	98,046	27,720	76,606	658,839
Jun	4,948	113,710	30,403	81,008	718,212
Jul	8,030	118,278	35,387	80,508	722,543
Aug	9,465	112,827	34,397	74,189	706,502
Sep	12,838	110,848	35,968	66,498	647,535
Oct	11,968	96,604	32,120	72,660	582,683
Nov	5,893	58,153	19,162	37,138	350,668
Dec	2,254	62,336	17,361	28,999	354,039
Ducks					
Jan		47	24	84	5,222
Feb		47	24	79	5,135
Mar	16	48	51	54	5,835
Apr	16	49	51	50	6,043
May	18	79	51	59	5,995
Jun	20	85	51	47	6,115
Jul	14	70	51	63	5,034
Aug	11	75	51	68	4,064
Sep	31	53	29	67	2,924
Oct	31	47	29	81	2,690
Nov	28	46	75	64	1,831
Dec	18	43	63	27	1,192
Total Poultry					
Jan	130,356	309,393	26,161	108,942	1,179,573
Feb	122,298	300,631	22,847	113,913	1,170,657
Mar	108,655	309,293	22,538	117,539	1,197,096
Apr	133,490	340,530	24,077	127,774	1,311,524
May	119,551	341,327	31,022	118,208	1,352,075
Jun	131,771	318,021	33,272	124,404	1,377,586
Jul	121,704	312,388	38,097	122,299	1,363,167
Aug	119,498	296,504	37,029	113,719	1,328,264
Sep	134,985	282,550	38,673	97,865	1,254,960
Oct	135,209	272,563	34,851	102,352	1,186,037
Nov	121,261	238,393	22,077	66,775	921,767
Dec	133,893	246,547	21,203	57,970	966,703

**Frozen Fruit: Stocks in Cold Storage by Region and
United States, Monthly, 2003**

Commodity and Month	Region				
	New England	Middle Atlantic	East North Central	West North Central	South Atlantic
	<i>1,000 Pounds</i>	<i>1,000 Pounds</i>	<i>1,000 Pounds</i>	<i>1,000 Pounds</i>	<i>1,000 Pounds</i>
Apples					
Jan	63	12,513	25,262	128	915
Feb	61	14,564	31,554	172	1,042
Mar	61	18,450	31,265	202	1,109
Apr	35	19,057	30,206	144	1,090
May	25	17,050	32,099	137	768
Jun	24	14,020	26,245	114	708
Jul	20	11,598	18,502	86	503
Aug	10	8,365	23,104	51	271
Sep	7	5,571	12,263	68	425
Oct	5	6,691	13,049	59	415
Nov	21	6,583	13,724	52	338
Dec	31	9,998	19,111	48	322
Apricots					
Jan					
Feb					
Mar					
Apr					
May					
Jun					
Jul					
Aug					
Sep					
Oct					
Nov					
Dec					
Blackberries					
Jan					
Feb					
Mar					
Apr					
May					
Jun					
Jul					
Aug					
Sep					
Oct					
Nov					
Dec					
Blueberries					
Jan	14,744	5,579	36,719	1,388	2,123
Feb	13,784	4,530	30,705	1,497	1,642
Mar	11,905	4,122	26,062	1,392	1,545
Apr	10,049	3,431	22,510	1,248	1,074
May	8,021	2,397	15,169	1,252	887
Jun	6,341	1,966	12,811	1,032	1,066
Jul	5,404	6,574	13,969	927	1,957
Aug	20,740	9,689	45,056	1,744	3,298
Sep	17,707	9,584	32,860	2,422	2,649
Oct	15,903	11,815	30,251	2,569	2,590
Nov	13,468	10,567	36,489	2,170	2,390
Dec	15,094	9,912	33,130	1,960	1,183

--continued

**Frozen Fruit: Stocks in Cold Storage by Region and
United States, Monthly, 2003 (continued)**

Commodity and Month	Region				
	East South Central	West South Central	Mountain	Pacific	US Total
	<i>1,000 Pounds</i>	<i>1,000 Pounds</i>	<i>1,000 Pounds</i>	<i>1,000 Pounds</i>	<i>1,000 Pounds</i>
Apples					
Jan	90	1,280	194	7,334	47,779
Feb	104	1,399	220	7,645	56,761
Mar	91	1,453	219	7,696	60,546
Apr	79	1,447	212	7,497	59,767
May	83	993	181	7,542	58,878
Jun	89	842	211	8,687	50,940
Jul	78	677	136	5,137	36,737
Aug	81	441	93	4,383	36,799
Sep	92	318	100	4,570	23,414
Oct	80	372	103	4,682	25,456
Nov	82	397	84	4,446	25,727
Dec	125	496	71	4,721	34,923
Apricots					
Jan					3,913
Feb					3,444
Mar					3,063
Apr					2,325
May					1,837
Jun					6,225
Jul					13,563
Aug					11,406
Sep					10,760
Oct					8,554
Nov					7,471
Dec					6,940
Blackberries					
Jan					19,395
Feb					17,316
Mar					16,265
Apr					13,288
May					9,416
Jun					8,647
Jul					31,838
Aug					32,135
Sep					30,405
Oct					28,740
Nov					26,081
Dec					23,395
Blueberries					
Jan	110	720	273	15,247	76,903
Feb	111	741	287	12,546	65,843
Mar	426	594	235	10,555	56,836
Apr	336	555	241	8,782	48,226
May	253	552	184	6,584	35,299
Jun	205	539	181	5,592	29,733
Jul	295	621	125	13,375	43,247
Aug	485	735	188	22,515	104,450
Sep	162	725	118	22,685	88,912
Oct	209	733	101	21,900	86,071
Nov	167	687	222	18,195	84,355
Dec	152	687	76	14,640	76,834

--continued

**Frozen Fruit: Stocks in Cold Storage by Region and
United States, Monthly, 2003 (continued)**

Commodity and Month	Region				
	New England	Middle Atlantic	East North Central	West North Central	South Atlantic
	<i>1,000 Pounds</i>	<i>1,000 Pounds</i>	<i>1,000 Pounds</i>	<i>1,000 Pounds</i>	<i>1,000 Pounds</i>
Boysenberries					
Jan					
Feb					
Mar					
Apr					
May					
Jun					
Jul					
Aug					
Sep					
Oct					
Nov					
Dec					
Cherries, Tart (RTP)					
Jan	7	4,198	32,558	807	597
Feb	6	3,570	26,030	767	589
Mar	6	2,750	23,580	756	638
Apr	5	2,037	19,425	344	505
May	5	1,084	12,440	64	435
Jun	5	592	7,051	74	392
Jul	7	4,610	45,965	94	2,474
Aug	7	4,022	90,774	107	2,439
Sep	6	5,017	75,421	80	2,198
Oct	5	4,773	65,551	99	1,915
Nov	5	5,355	59,728	94	1,758
Dec	4	4,960	53,734	91	1,582
Cherries, Tart (Juice)					
Jan					
Feb					
Mar					
Apr					
May					
Jun					
Jul					
Aug					
Sep					
Oct					
Nov					
Dec					
Cherries, Sweet					
Jan		328	3,278	634	46
Feb		316	2,886	600	46
Mar		350	2,618	491	39
Apr		280	2,304	626	32
May		125	1,667	489	25
Jun		116	1,031	401	25
Jul		136	4,229	354	42
Aug		275	5,736	666	72
Sep		253	4,711	922	65
Oct		398	3,974	943	51
Nov		327	3,665	960	40
Dec		328	3,378	829	32

--continued

Frozen Fruit: Stocks in Cold Storage by Region and United States, Monthly, 2003 (continued)

Commodity and Month	Region				
	East South Central	West South Central	Mountain	Pacific	US Total
	<i>1,000 Pounds</i>	<i>1,000 Pounds</i>	<i>1,000 Pounds</i>	<i>1,000 Pounds</i>	<i>1,000 Pounds</i>
Boysenberries					
Jan					2,660
Feb					2,596
Mar					2,048
Apr					1,432
May					1,119
Jun					1,139
Jul					3,337
Aug					2,646
Sep					1,944
Oct					1,516
Nov					1,231
Dec					1,502
Cherries, Tart (RTP)					
Jan	31	1,134	2,597	6,066	47,995
Feb	43	1,172	844	5,678	38,699
Mar	8	1,106	998	5,126	34,968
Apr	7	862	554	4,043	27,782
May	3	611	538	3,195	18,375
Jun	3	486	435	1,964	11,002
Jul	2	453	2,880	12,520	69,005
Aug	4	400	3,068	11,664	112,485
Sep	1	359	2,991	9,976	96,049
Oct		299	2,315	8,357	83,314
Nov		344	1,787	7,414	76,485
Dec		242	1,601	6,731	68,945
Cherries, Tart (Juice)					
Jan					1,362
Feb					1,594
Mar					1,437
Apr					1,221
May					1,160
Jun					861
Jul					1,275
Aug					3,899
Sep					2,438
Oct					1,732
Nov					1,868
Dec					1,707
Cherries, Sweet					
Jan	1	52	860	1,996	7,195
Feb	1	45	961	1,962	6,817
Mar	5	80	779	1,914	6,276
Apr	4	64	1,153	1,784	6,247
May	3	72	990	1,463	4,834
Jun	3	75	879	2,173	4,703
Jul	6	61	749	3,304	8,881
Aug	6	54	746	2,718	10,273
Sep	1	60	741	2,093	8,846
Oct	1	22	1,001	1,851	8,241
Nov	1	40	601	1,792	7,426
Dec	1	39	528	1,520	6,655

--continued

**Frozen Fruit: Stocks in Cold Storage by Region and
United States, Monthly, 2003 (continued)**

Commodity and Month	Region				
	New England	Middle Atlantic	East North Central	West North Central	South Atlantic
	<i>1,000 Pounds</i>	<i>1,000 Pounds</i>	<i>1,000 Pounds</i>	<i>1,000 Pounds</i>	<i>1,000 Pounds</i>
Grapes					
Jan					
Feb					
Mar					
Apr					
May					
Jun					
Jul					
Aug					
Sep					
Oct					
Nov					
Dec					
Peaches					
Jan	28	2,581	6,330	2,170	503
Feb	24	2,489	5,586	1,989	513
Mar	20	2,335	5,439	1,970	412
Apr	16	1,945	5,379	1,689	280
May	11	1,473	3,602	1,454	202
Jun	10	1,155	3,085	1,290	172
Jul	14	920	2,335	1,048	281
Aug	26	1,726	6,018	1,018	494
Sep	37	2,161	9,101	1,140	564
Oct	42	3,170	8,065	2,357	634
Nov	39	3,027	6,633	3,829	548
Dec	36	2,956	6,296	4,101	499
Raspberries, Black					
Jan					
Feb					
Mar					
Apr					
May					
Jun					
Jul					
Aug					
Sep					
Oct					
Nov					
Dec					
Raspberries, Red					
Jan	157	937	1,172	117	124
Feb	161	1,122	1,260	81	103
Mar	140	1,025	1,078	86	118
Apr	105	1,137	1,142	85	106
May	53	1,265	1,054	112	89
Jun	40	1,330	1,182	115	72
Jul	41	1,510	1,277	145	213
Aug	59	1,489	1,863	183	223
Sep	74	1,365	1,289	156	205
Oct	35	1,321	1,336	413	250
Nov	34	1,045	1,240	352	216
Dec	39	908	1,122	279	187

--continued

Frozen Fruit: Stocks in Cold Storage by Region and United States, Monthly, 2003 (continued)

Commodity and Month	Region				
	East South Central	West South Central	Mountain	Pacific	US Total
	<i>1,000 Pounds</i>	<i>1,000 Pounds</i>	<i>1,000 Pounds</i>	<i>1,000 Pounds</i>	<i>1,000 Pounds</i>
Grapes					
Jan					6,226
Feb					6,069
Mar					5,593
Apr					5,255
May					5,314
Jun					4,524
Jul					3,749
Aug					2,876
Sep					4,481
Oct					10,512
Nov					11,021
Dec					9,261
Peaches					
Jan	87	1,409	133	47,565	60,806
Feb	57	1,393	158	40,110	52,319
Mar	51	1,359	117	32,947	44,650
Apr	37	1,096	109	25,477	36,028
May	27	817	97	18,014	25,697
Jun	46	1,032	138	10,587	17,515
Jul	25	940	121	17,476	23,160
Aug	56	778	112	37,471	47,699
Sep	31	929	80	58,021	72,064
Oct	33	1,315	73	66,719	82,408
Nov	32	1,241	165	60,907	76,421
Dec	61	1,245	101	54,149	69,444
Raspberries, Black					
Jan					1,991
Feb					1,939
Mar					1,788
Apr					1,328
May					1,143
Jun					1,092
Jul					2,332
Aug					2,205
Sep					1,696
Oct					1,491
Nov					1,287
Dec					1,058
Raspberries, Red					
Jan	59	711	2	39,258	42,537
Feb	165	485	2	34,634	38,013
Mar	144	406	2	29,126	32,125
Apr	80	394	1	22,570	25,620
May	76	243	2	17,513	20,407
Jun	162	227	2	16,356	19,486
Jul	152	340	40	72,282	76,000
Aug	176	226	11	65,625	69,855
Sep	200	228	13	57,214	60,744
Oct	361	173	269	50,517	54,675
Nov	311	141	190	43,455	46,984
Dec	282	133	189	37,748	40,887

--continued

**Frozen Fruit: Stocks in Cold Storage by Region and
United States, Monthly, 2003 (continued)**

Commodity and Month	Region				
	New England	Middle Atlantic	East North Central	West North Central	South Atlantic
	<i>1,000 Pounds</i>	<i>1,000 Pounds</i>	<i>1,000 Pounds</i>	<i>1,000 Pounds</i>	<i>1,000 Pounds</i>
Strawberries					
Jan	106	3,698	3,905	576	813
Feb	54	4,160	3,940	620	909
Mar	100	4,423	4,110	693	950
Apr	109	4,188	3,503	980	772
May	160	4,240	3,507	1,451	1,192
Jun	129	4,869	3,744	1,421	1,478
Jul	130	4,752	4,671	1,377	1,529
Aug	86	5,109	5,083	1,751	1,353
Sep	99	5,338	5,357	1,886	1,072
Oct	110	5,009	5,527	1,982	970
Nov	88	4,379	5,262	2,008	1,239
Dec	101	5,773	6,268	1,707	1,140
Other Frozen Fruit					
Jan	21,618	13,356	212,611	2,158	6,120
Feb	33,316	12,177	192,624	2,499	5,500
Mar	44,023	13,130	166,164	2,503	4,572
Apr	56,099	12,360	137,211	2,293	4,005
May	63,630	10,857	113,999	2,518	3,689
Jun	87	8,628	87,192	2,526	2,951
Jul	78	7,596	71,872	2,512	2,642
Aug	72	7,171	57,330	2,572	1,742
Sep	77	7,135	63,130	2,609	1,336
Oct	124	14,265	269,899	2,557	2,389
Nov	125	13,891	274,334	2,518	4,032
Dec	153	13,530	249,887	2,289	3,420
Total Frozen Fruit					
Jan	36,724	45,989	325,630	8,517	11,561
Feb	47,407	45,665	298,437	8,737	10,649
Mar	56,256	49,227	263,861	8,533	9,712
Apr	66,418	46,846	225,018	7,833	8,158
May	71,905	40,454	186,702	7,839	7,540
Jun	6,637	34,340	145,084	7,285	7,107
Jul	5,696	39,987	165,387	7,043	10,082
Aug	21,002	40,502	239,946	9,259	10,349
Sep	18,009	40,403	208,429	10,577	9,054
Oct	16,225	53,354	402,804	12,083	9,784
Nov	13,781	51,027	406,540	13,021	11,070
Dec	15,459	53,839	377,853	12,252	8,827

--continued

**Frozen Fruit: Stocks in Cold Storage by Region and
United States, Monthly, 2003 (continued)**

Commodity and Month	Region				
	East South Central	West South Central	Mountain	Pacific	US Total
	<i>1,000 Pounds</i>	<i>1,000 Pounds</i>	<i>1,000 Pounds</i>	<i>1,000 Pounds</i>	<i>1,000 Pounds</i>
Strawberries					
Jan	936	18,941	181	190,778	219,934
Feb	892	19,431	207	173,404	203,617
Mar	1,082	21,527	252	155,764	188,901
Apr	1,116	22,425	246	180,750	214,089
May	1,429	26,669	245	230,868	269,761
Jun	2,031	41,444	249	381,957	437,322
Jul	1,868	45,216	159	412,629	472,331
Aug	1,935	32,248	137	378,426	426,128
Sep	1,639	29,763	162	336,351	381,667
Oct	1,688	25,674	200	297,155	338,315
Nov	1,451	22,339	222	250,302	287,290
Dec	1,514	19,592	178	210,900	247,173
Other Frozen Fruit					
Jan	174	14,943	6,265	107,077	384,322
Feb	162	15,617	5,662	94,335	361,892
Mar	183	14,601	6,325	78,766	330,267
Apr	151	13,607	4,731	72,390	302,847
May	129	14,653	4,332	65,459	279,266
Jun	98	12,293	5,121	41,874	160,770
Jul	132	12,248	5,632	45,127	147,839
Aug	220	10,319	4,848	46,843	131,117
Sep	297	10,201	3,870	58,299	146,954
Oct	293	12,030	10,240	139,488	451,285
Nov	292	11,376	3,886	142,952	453,406
Dec	294	10,403	3,616	125,942	409,534
Total Frozen Fruit					
Jan	1,748	40,015	10,586	442,248	923,018
Feb	1,947	40,941	8,404	394,732	856,919
Mar	2,382	41,754	8,987	344,051	784,763
Apr	2,058	40,946	7,297	340,881	745,455
May	2,244	45,145	6,608	364,069	732,506
Jun	2,932	57,761	7,257	485,556	753,959
Jul	2,895	62,420	9,948	629,836	933,294
Aug	3,242	47,174	9,597	612,902	993,973
Sep	2,780	44,231	8,214	588,677	930,374
Oct	2,978	41,618	14,413	629,051	1,182,310
Nov	2,650	37,213	7,333	564,418	1,107,053
Dec	2,767	33,459	6,536	487,266	998,258

**Frozen Juice Concentrate: Stocks in Cold Storage by Region
and United States, Monthly, 2003**

Commodity and Month	Region				
	New England	Middle Atlantic	East North Central	West North Central	South Atlantic
	<i>1,000 Pounds</i>	<i>1,000 Pounds</i>	<i>1,000 Pounds</i>	<i>1,000 Pounds</i>	<i>1,000 Pounds</i>
Orange Juice (Pounds) ^{1 2}					
Jan	200		657	155	1,776,861
Feb	183		602	138	1,756,442
Mar	193		962	133	1,775,679
Apr	176		795	135	1,855,772
May	150		928	131	2,017,252
Jun	145		864	129	1,939,669
Jul	113		816	143	1,773,654
Aug	92		861	150	1,605,043
Sep	79		1,265	152	1,466,063
Oct	78		630	84	1,278,560
Nov	103		818	86	1,367,622
Dec	156		848	117	1,520,032
Orange Juice (Gallon Equivalent) ³					
Jan	20		66	16	179,553
Feb	18		61	14	177,490
Mar	20		97	13	179,434
Apr	18		80	14	187,527
May	15		94	13	203,845
Jun	15		87	13	196,005
Jul	11		82	14	179,229
Aug	9		87	15	162,191
Sep	8		128	15	148,147
Oct	8		64	8	129,200
Nov	10		83	9	138,199
Dec	16		86	12	153,601
Other Juice					
Jan	546	30,990	11,629	1,543	100,330
Feb	574	30,374	11,095	1,738	102,196
Mar	640	27,467	10,404	2,277	116,702
Apr	564	21,786	10,644	2,063	113,555
May	454	22,067	9,888	1,739	106,211
Jun	44,802	21,706	11,183	1,264	106,668
Jul	40,383	23,015	10,601	1,010	101,632
Aug	24,268	23,098	9,121	882	103,960
Sep	12,352	24,521	9,720	946	97,343
Oct	18,613	42,599	7,997	843	99,642
Nov	27,845	38,478	13,767	734	89,884
Dec	37,862	31,197	14,620	843	90,659
Total Frozen Juices ⁴					
Jan	746	30,990	12,286	1,698	1,877,191
Feb	757	30,374	11,697	1,876	1,858,638
Mar	833	27,467	11,366	2,410	1,892,381
Apr	740	21,786	11,439	2,198	1,969,327
May	604	22,067	10,816	1,870	2,123,463
Jun	44,947	21,706	12,047	1,393	2,046,337
Jul	40,496	23,015	11,417	1,153	1,875,286
Aug	24,360	23,098	9,982	1,032	1,709,003
Sep	12,431	24,521	10,985	1,098	1,563,406
Oct	18,691	42,599	8,627	927	1,378,202
Nov	27,948	38,478	14,585	820	1,457,506
Dec	38,018	31,197	15,468	960	1,610,691

See footnote(s) at end of table.

--continued

**Frozen Juice Concentrate: Stocks in Cold Storage by Region
and United States, Monthly, 2003 (continued)**

Commodity and Month	Region				
	East South Central	West South Central	Mountain	Pacific	US Total
	<i>1,000 Pounds</i>	<i>1,000 Pounds</i>	<i>1,000 Pounds</i>	<i>1,000 Pounds</i>	<i>1,000 Pounds</i>
Orange Juice (Pounds) ^{1 2}					
Jan	42	7,160	169	66,670	1,851,914
Feb	39	7,598	121	68,276	1,833,399
Mar	85	7,449	81	71,979	1,856,561
Apr	36	6,759	85	73,078	1,936,836
May	42	5,718	132	78,262	2,102,615
Jun	38	5,301	118	74,934	2,021,198
Jul	35	5,319	95	68,731	1,848,906
Aug	31	4,649	115	61,212	1,672,153
Sep	72	4,474	115	57,718	1,529,938
Oct	58	4,263	108	51,836	1,335,617
Nov	62	4,493	145	55,186	1,428,515
Dec	66	5,200	163	59,207	1,585,789
Orange Juice (Gallon Equivalent) ³					
Jan	4	724	17	6,737	187,138
Feb	4	768	12	6,899	185,267
Mar	9	753	8	7,274	187,607
Apr	4	683	9	7,385	195,719
May	4	578	13	7,908	212,471
Jun	4	536	12	7,572	204,244
Jul	4	537	10	6,945	186,834
Aug	3	470	12	6,186	168,973
Sep	7	452	12	5,832	154,602
Oct	6	431	11	5,238	134,965
Nov	6	454	15	5,577	144,353
Dec	7	525	16	5,983	160,245
Other Juice					
Jan	120	21,217	310	87,061	253,746
Feb	175	22,026	389	83,670	252,237
Mar	138	21,261	354	89,690	268,933
Apr	190	21,703	304	109,276	280,085
May	226	19,229	312	106,969	267,095
Jun	244	18,739	499	128,196	333,301
Jul	216	15,811	1,293	119,293	313,254
Aug	204	14,610	1,504	117,507	295,154
Sep	147	13,694	1,757	122,594	283,074
Oct	151	14,640	1,837	121,148	307,470
Nov	144	14,368	1,759	116,602	303,581
Dec	220	14,288	2,138	117,744	309,571
Total Frozen Juices ⁴					
Jan	162	28,377	479	153,731	2,105,660
Feb	214	29,624	510	151,946	2,085,636
Mar	223	28,710	435	161,669	2,125,494
Apr	226	28,462	389	182,354	2,216,921
May	268	24,947	444	185,231	2,369,710
Jun	282	24,040	617	203,130	2,354,499
Jul	251	21,130	1,388	188,024	2,162,160
Aug	235	19,259	1,619	178,719	1,967,307
Sep	219	18,168	1,872	180,312	1,813,012
Oct	209	18,903	1,945	172,984	1,643,087
Nov	206	18,861	1,904	171,788	1,732,096
Dec	286	19,488	2,301	176,951	1,895,360

¹ Adjusted to 42.0 degree Brix equivalent.

² Middle Atlantic combined with South Atlantic.

³ 9.896 pounds per gallon.

⁴ Middle Atlantic orange juice combined with South Atlantic.

**Frozen Vegetables: Stocks in Cold Storage by Region
and United States, Monthly, 2003¹**

Commodity and Month	Region				
	New England	Middle Atlantic	East North Central	West North Central	South Atlantic
	<i>1,000 Pounds</i>	<i>1,000 Pounds</i>	<i>1,000 Pounds</i>	<i>1,000 Pounds</i>	<i>1,000 Pounds</i>
Asparagus					
Jan		916	2,217	57	626
Feb		927	1,784	34	503
Mar		861	1,773	24	493
Apr		947	1,750	55	464
May		962	3,346	36	433
Jun		1,004	5,789	32	555
Jul		886	5,530	62	517
Aug		914	5,984	50	392
Sep		931	5,469	46	460
Oct		919	4,619	88	565
Nov		817	4,095	68	540
Dec		738	3,444	67	449
Lima Beans, Fordhook					
Jan		1,594	752	21	399
Feb		1,466	653	21	462
Mar		1,432	597	12	512
Apr		1,531	560	9	429
May		1,293	515	6	384
Jun		1,073	475	6	564
Jul		976	596	13	533
Aug		1,304	691	8	580
Sep		1,998	906	5	894
Oct		1,938	929	2	940
Nov		1,518	774	10	703
Dec		1,314	695	11	544
Lima Beans, Baby					
Jan		7,885	2,599	448	8,926
Feb		7,774	2,448	454	9,937
Mar		7,056	2,422	450	8,102
Apr		6,021	2,042	322	5,888
May		4,973	1,858	318	5,083
Jun		4,452	1,626	139	4,113
Jul		3,289	1,429	39	3,097
Aug		3,068	1,265	6	3,630
Sep		4,566	1,870	1	9,168
Oct		5,279	1,776		11,309
Nov		4,683	1,700		9,895
Dec		4,228	1,728	1	7,572
Green Beans, Regular Cut					
Jan		36,999	35,976	608	3,439
Feb		33,934	31,350	471	3,588
Mar		30,368	25,493	243	3,928
Apr		28,081	20,433	285	2,785
May		22,848	15,984	277	2,771
Jun		9,499	12,524	386	2,238
Jul		17,624	23,753	796	2,740
Aug		34,892	38,739	969	3,526
Sep		48,007	43,153	912	3,138
Oct		45,535	39,710	740	2,490
Nov		35,267	35,421	2,643	1,977
Dec		28,625	30,035	2,215	1,922

See footnote(s) at end of table.

--continued

**Frozen Vegetables: Stocks in Cold Storage by Region
and United States, Monthly, 2003 ¹ (continued)**

Commodity and Month	Region				
	East South Central	West South Central	Mountain	Pacific	US Total
	<i>1,000 Pounds</i>	<i>1,000 Pounds</i>	<i>1,000 Pounds</i>	<i>1,000 Pounds</i>	<i>1,000 Pounds</i>
Asparagus					
Jan		566	20	2,240	6,642
Feb		583	11	2,035	5,877
Mar		629	3	1,820	5,603
Apr		638	6	1,424	5,284
May		783	2	1,473	7,035
Jun		841	9	2,747	10,977
Jul		585	4	2,777	10,361
Aug		631	6	2,469	10,446
Sep		585	6	2,430	9,927
Oct		463	6	2,135	8,795
Nov		533	4	1,995	8,052
Dec		472	4	2,194	7,368
Lima Beans, Fordhook					
Jan		491		7,486	10,743
Feb		388	2	5,896	8,888
Mar		406	2	4,872	7,833
Apr		356	2	3,773	6,660
May		363	2	2,661	5,224
Jun		283		2,245	4,646
Jul		401	2	1,450	3,971
Aug		328	2	5,113	8,026
Sep		551	3	3,973	8,330
Oct		359	158	4,461	8,787
Nov		372	1	3,836	7,214
Dec		305	1	3,114	5,984
Lima Beans, Baby					
Jan		1,044	3,255	17,234	41,391
Feb		1,293	3,100	15,028	40,034
Mar		1,096	2,790	12,449	34,365
Apr		1,050	2,322	10,740	28,385
May		971	2,181	9,803	25,187
Jun		971	1,709	7,560	20,570
Jul		796	921	5,528	15,099
Aug		659	5,024	13,765	27,417
Sep		1,067	6,870	21,928	45,470
Oct		1,011	6,223	33,581	59,179
Nov		1,038	6,163	31,299	54,778
Dec		1,240	5,817	25,797	46,383
Green Beans, Regular Cut					
Jan		1,330	87	63,525	141,964
Feb		1,460	41	62,281	133,125
Mar		1,154	4	50,929	112,119
Apr		1,099	81	41,533	94,297
May		1,001	44	35,628	78,553
Jun		1,398	136	29,378	55,559
Jul		1,311	144	56,597	102,965
Aug		1,220	289	87,259	166,894
Sep		1,327	166	94,492	191,195
Oct		1,692	230	83,903	174,300
Nov		2,745	241	72,041	150,335
Dec		1,505	230	61,643	126,175

See footnote(s) at end of table.

--continued

**Frozen Vegetables: Stocks in Cold Storage by Region
and United States, Monthly, 2003 ¹ (continued)**

Commodity and Month	Region				
	New England	Middle Atlantic	East North Central	West North Central	South Atlantic
	<i>1,000 Pounds</i>	<i>1,000 Pounds</i>	<i>1,000 Pounds</i>	<i>1,000 Pounds</i>	<i>1,000 Pounds</i>
Green Beans, French Style					
Jan		5,494	4,692	113	326
Feb		5,272	3,598	87	446
Mar		4,263	3,099	52	559
Apr		3,282	2,307	8	500
May		2,646	1,663	172	398
Jun		2,296	1,368	161	334
Jul		4,333	3,357	121	650
Aug		6,876	6,837	186	702
Sep		10,686	8,849	302	500
Oct		9,960	8,552	244	562
Nov		6,648	7,953	319	712
Dec		5,194	7,006	297	387
Broccoli, Spears					
Jan		7,321	4,992	7	2,128
Feb		7,386	5,028	6	2,524
Mar		8,219	4,871	3	3,770
Apr		7,366	3,429	3	3,689
May		6,418	4,092	1	2,984
Jun		6,457	6,561	1	2,987
Jul		6,160	6,281		2,791
Aug		4,118	5,184		2,357
Sep		5,741	4,123	2	2,478
Oct		4,839	3,922	1	2,166
Nov		4,121	3,629	2	2,047
Dec		4,012	3,863		2,202
Broccoli, Chopped & Cut					
Jan		3,829	7,517	8,443	5,378
Feb		4,149	7,367	7,119	5,415
Mar		3,963	7,127	5,929	7,182
Apr		3,967	8,065	6,191	6,399
May		3,869	8,228	6,802	6,709
Jun		3,803	8,498	6,796	7,596
Jul		4,983	9,000	6,698	8,408
Aug		5,114	9,023	6,091	8,076
Sep		4,313	7,605	5,250	7,212
Oct		4,145	6,780	4,780	6,621
Nov		3,537	5,395	5,070	6,224
Dec		3,707	4,537	5,411	4,451
Brussels Sprouts					
Jan		2,240	1,628	6	1,658
Feb		2,259	1,482	1	1,700
Mar		2,181	1,288	8	1,083
Apr		1,881	1,138	6	994
May		1,489	977	2	1,704
Jun		1,668	974	2	1,518
Jul		1,695	1,061	6	2,165
Aug		3,455	1,096	5	1,895
Sep		1,093	1,158		1,947
Oct		915	1,307		676
Nov		1,255	1,117	13	813
Dec		1,762	1,671	1	1,184

See footnote(s) at end of table.

--continued

**Frozen Vegetables: Stocks in Cold Storage by Region
and United States, Monthly, 2003 ¹ (continued)**

Commodity and Month	Region				
	East South Central	West South Central	Mountain	Pacific	US Total
	<i>1,000 Pounds</i>	<i>1,000 Pounds</i>	<i>1,000 Pounds</i>	<i>1,000 Pounds</i>	<i>1,000 Pounds</i>
Green Beans, French Style					
Jan		288	128	8,599	19,640
Feb		404	91	6,036	15,934
Mar		423	81	4,632	13,109
Apr		417	56	4,619	11,189
May		480	45	3,491	8,895
Jun		417	42	2,654	7,272
Jul		217	14	8,279	16,971
Aug		248	14	11,276	26,139
Sep		287	59	12,105	32,788
Oct		219	18	11,319	30,874
Nov		198	12	11,005	26,847
Dec		301	11	9,970	23,166
Broccoli, Spears					
Jan		17,728	107	19,615	51,898
Feb		18,800	101	18,219	52,064
Mar		18,833	102	17,451	53,249
Apr		17,097	99	19,937	51,620
May		17,172	106	21,088	51,861
Jun		17,685	102	19,896	53,689
Jul		15,904	88	16,619	47,843
Aug		15,391	80	17,058	44,188
Sep		16,609	85	17,173	46,211
Oct		15,128	77	15,758	41,891
Nov		13,102	81	12,777	35,759
Dec		12,927	92	7,089	30,185
Broccoli, Chopped & Cut					
Jan		20,420	589	21,349	67,525
Feb		23,843	621	24,159	72,673
Mar		27,825	525	24,472	77,023
Apr		27,946	775	26,972	80,315
May		30,385	784	26,262	83,039
Jun		29,735	676	24,678	81,782
Jul		30,749	1,115	24,926	85,879
Aug		19,955	1,717	30,864	80,840
Sep		14,534	1,308	28,646	68,868
Oct		11,227	862	24,018	58,433
Nov		13,488	963	23,460	58,137
Dec		11,867	809	16,353	47,135
Brussels Sprouts					
Jan		366	2	12,960	18,860
Feb		344	2	11,249	17,037
Mar		408	2	9,892	14,862
Apr		352	2	8,751	13,124
May		328	2	7,419	11,921
Jun		330	2	6,559	11,053
Jul		374		5,238	10,539
Aug		309	4	3,905	10,669
Sep		258	4	2,724	7,184
Oct		180	6	5,631	8,715
Nov		151	4	10,825	14,178
Dec		266	5	14,072	18,961

See footnote(s) at end of table.

--continued

**Frozen Vegetables: Stocks in Cold Storage by Region
and United States, Monthly, 2003¹ (continued)**

Commodity and Month	Region				
	New England	Middle Atlantic	East North Central	West North Central	South Atlantic
	<i>1,000 Pounds</i>	<i>1,000 Pounds</i>	<i>1,000 Pounds</i>	<i>1,000 Pounds</i>	<i>1,000 Pounds</i>
Carrots, Diced					
Jan		8,609	34,999	214	1,386
Feb		7,796	30,369	282	1,398
Mar		6,130	26,528	314	1,151
Apr		5,383	22,732	380	976
May		4,309	19,775	305	1,032
Jun		3,609	15,659	267	900
Jul		3,277	14,119	194	826
Aug		2,838	13,437	308	844
Sep		2,313	13,990	337	887
Oct		4,374	26,039	593	1,502
Nov		8,299	27,244	566	2,240
Dec		12,136	27,540	474	1,978
Carrots, Other					
Jan		13,066	29,638	443	4,415
Feb		12,133	26,346	401	4,164
Mar		10,781	22,508	297	3,657
Apr		10,541	19,751	416	3,360
May		10,644	18,117	413	3,421
Jun		10,331	16,403	395	3,589
Jul		9,899	12,272	300	3,339
Aug		10,429	10,658	459	3,427
Sep		9,750	14,168	383	3,885
Oct		19,711	26,181	342	5,670
Nov		23,337	24,680	367	4,986
Dec		16,169	22,010	358	5,128
Cauliflower					
Jan		2,278	3,541	38	879
Feb		2,248	3,309	50	938
Mar		1,924	3,399	31	812
Apr		2,051	3,031	36	687
May		1,561	3,415	47	465
Jun		1,445	3,056	36	509
Jul		1,529	2,632	46	676
Aug		1,210	2,385	45	657
Sep		1,317	2,233	80	721
Oct		1,413	2,240	6	794
Nov		1,684	2,227	11	823
Dec		2,406	2,833	43	1,252
Corn, Cut					
Jan		35,286	70,370	31,983	3,895
Feb		30,535	64,704	28,002	3,772
Mar		27,213	55,836	24,382	6,056
Apr		25,268	46,395	20,569	5,851
May		19,062	41,156	14,703	6,254
Jun		16,761	36,541	14,313	7,109
Jul		14,410	31,400	14,084	6,957
Aug		27,622	63,436	37,214	8,364
Sep		47,696	103,038	64,697	11,783
Oct		53,916	99,804	64,312	10,530
Nov		49,610	90,808	44,017	7,285
Dec		44,506	77,629	38,634	6,819

See footnote(s) at end of table.

--continued

**Frozen Vegetables: Stocks in Cold Storage by Region
and United States, Monthly, 2003¹ (continued)**

Commodity and Month	Region				
	East South Central	West South Central	Mountain	Pacific	US Total
	<i>1,000 Pounds</i>	<i>1,000 Pounds</i>	<i>1,000 Pounds</i>	<i>1,000 Pounds</i>	<i>1,000 Pounds</i>
Carrots, Diced					
Jan		1,362		36,900	83,470
Feb		1,341	8	28,853	70,047
Mar		1,935	13	21,617	57,688
Apr		2,069	4	17,747	49,291
May		1,817	11	17,219	44,468
Jun		2,273	2	13,630	36,340
Jul		2,113	2	10,248	30,779
Aug		1,542	3	9,012	27,984
Sep		1,447	9	14,915	33,898
Oct		940	9	39,271	72,728
Nov		1,070	44	55,221	94,684
Dec		1,060	72	55,138	98,398
Carrots, Other					
Jan		6,896	605	73,381	128,444
Feb		7,792	583	66,624	118,043
Mar		9,472	526	58,990	106,231
Apr		11,462	426	51,587	97,543
May		12,828	344	52,277	98,044
Jun		11,429	473	48,121	90,741
Jul		10,470	480	45,677	82,437
Aug		10,019	332	51,504	86,828
Sep		9,079	322	66,404	103,991
Oct		10,049	275	109,939	172,167
Nov		9,124	376	115,525	178,395
Dec		9,175	199	101,365	154,404
Cauliflower					
Jan		9,136	8	18,348	34,228
Feb		8,273	11	16,094	30,923
Mar		7,531	8	13,996	27,701
Apr		6,398	2	11,660	23,865
May		4,328	3	9,898	19,717
Jun		3,562	20	7,455	16,083
Jul		3,320	22	5,618	13,843
Aug		2,627	28	7,985	14,937
Sep		2,268	28	8,592	15,239
Oct		1,490	16	20,782	26,741
Nov		2,065	17	21,704	28,531
Dec		2,972	15	18,625	28,146
Corn, Cut					
Jan		2,169	4,629	220,413	368,745
Feb		1,936	3,888	204,373	337,210
Mar		1,899	3,903	168,064	287,353
Apr		1,709	3,863	134,669	238,324
May		1,333	3,790	114,020	200,318
Jun		1,407	4,054	96,320	176,505
Jul		1,184	1,105	110,023	179,163
Aug		1,939	2,457	211,590	352,622
Sep		2,390	6,157	330,387	566,148
Oct		2,096	5,821	382,417	618,896
Nov		1,792	4,977	347,020	545,509
Dec		2,456	4,032	320,414	494,490

See footnote(s) at end of table.

--continued

**Frozen Vegetables: Stocks in Cold Storage by Region
and United States, Monthly, 2003¹ (continued)**

Commodity and Month	Region				
	New England	Middle Atlantic	East North Central	West North Central	South Atlantic
	<i>1,000 Pounds</i>	<i>1,000 Pounds</i>	<i>1,000 Pounds</i>	<i>1,000 Pounds</i>	<i>1,000 Pounds</i>
Corn, Cob					
Jan		16,798	31,242	24,088	5,169
Feb		15,521	28,082	21,749	4,235
Mar		14,431	21,909	18,477	6,113
Apr		13,043	19,104	13,849	5,097
May		11,845	16,686	7,987	4,229
Jun		11,348	13,277	3,690	3,969
Jul		8,720	13,403	4,196	3,903
Aug		11,912	28,676	17,519	6,405
Sep		19,576	44,936	30,843	8,864
Oct		19,545	44,326	31,102	8,698
Nov		17,798	41,655	30,023	7,675
Dec		17,227	38,258	27,052	6,513
Mixed Vegetables					
Jan		4,092	9,269	188	1,687
Feb		3,949	9,802	168	1,650
Mar		4,634	8,476	153	2,545
Apr		4,769	8,476	88	2,280
May		4,220	8,158	64	2,349
Jun		4,022	6,183	72	2,387
Jul		4,162	7,199	146	2,322
Aug		4,879	8,162	175	2,210
Sep		5,270	8,915	104	2,401
Oct		5,343	9,413	78	2,760
Nov		5,033	8,348	129	2,714
Dec		4,149	7,539	34	2,086
Okra					
Jan		1,897	562	7,427	8,004
Feb		1,637	568	5,485	6,576
Mar		1,530	541	4,482	7,756
Apr		1,628	490	2,346	7,078
May		1,344	435	1,864	7,331
Jun		1,421	545	2,277	7,672
Jul		1,660	587	625	8,579
Aug		1,657	733	457	9,174
Sep		2,345	624	456	9,451
Oct		1,642	728	409	7,758
Nov		1,338	640	144	6,803
Dec		1,319	610	10	5,053
Onion Rings					
Jan		314	3,904	1,096	1,826
Feb		314	3,526	633	565
Mar		331	3,057	930	628
Apr		310	2,806	851	552
May		241	3,222	708	470
Jun		287	4,276	882	530
Jul		311	4,456	783	638
Aug		301	4,331	638	661
Sep		344	4,041	756	617
Oct		276	3,742	1,140	556
Nov		314	3,767	898	559
Dec		256	3,599	951	533

See footnote(s) at end of table.

--continued

**Frozen Vegetables: Stocks in Cold Storage by Region
and United States, Monthly, 2003¹ (continued)**

Commodity and Month	Region				
	East South Central	West South Central	Mountain	Pacific	US Total
	<i>1,000 Pounds</i>	<i>1,000 Pounds</i>	<i>1,000 Pounds</i>	<i>1,000 Pounds</i>	<i>1,000 Pounds</i>
Corn, Cob					
Jan		1,287	4,006	169,143	251,733
Feb		1,284	47	153,683	224,601
Mar		1,158	32	135,232	197,352
Apr		987	33	107,045	159,158
May		856	13	97,818	139,434
Jun		1,058	28	75,107	108,477
Jul		878	22	85,957	117,079
Aug		881	996	167,758	234,147
Sep		1,151	4,953	278,375	388,698
Oct		1,157	5,576	283,269	393,673
Nov		1,562	4,482	256,635	359,830
Dec		1,253	1,788	196,866	288,957
Mixed Vegetables					
Jan		5,777	38	23,043	44,094
Feb		5,741	153	21,472	42,935
Mar		5,891	129	21,593	43,421
Apr		6,251	133	21,223	43,220
May		6,588	89	18,710	40,178
Jun		6,542	88	23,066	42,360
Jul		6,879	251	23,711	44,670
Aug		7,225	251	22,981	45,883
Sep		6,149	237	23,056	46,132
Oct		5,152	215	27,794	50,755
Nov		5,031	125	27,665	49,045
Dec		5,008	124	24,597	43,537
Okra					
Jan		23,963		495	42,348
Feb		22,117		539	36,922
Mar		18,557		588	33,454
Apr		16,660		622	28,824
May		16,612		628	28,214
Jun		23,197		735	35,847
Jul		27,628		740	39,819
Aug		37,322		593	49,936
Sep		42,239		661	55,776
Oct		36,906		557	48,000
Nov		33,075		508	42,508
Dec		30,151		453	37,596
Onion Rings					
Jan		818	653	477	9,088
Feb		746	425	493	6,702
Mar		682	549	404	6,581
Apr		614	385	200	5,718
May		595	362	298	5,896
Jun		711	274	812	7,772
Jul		147	354	884	7,573
Aug		339	317	793	7,380
Sep		304	469	737	7,268
Oct		207	400	686	7,007
Nov		587	574	696	7,395
Dec		378	607	591	6,915

See footnote(s) at end of table.

--continued

**Frozen Vegetables: Stocks in Cold Storage by Region
and United States, Monthly, 2003 ¹ (continued)**

Commodity and Month	Region				
	New England	Middle Atlantic	East North Central	West North Central	South Atlantic
	<i>1,000 Pounds</i>	<i>1,000 Pounds</i>	<i>1,000 Pounds</i>	<i>1,000 Pounds</i>	<i>1,000 Pounds</i>
Onions, Other					
Jan		2,320	4,518	184	2,987
Feb		2,263	4,374	246	3,155
Mar		3,383	4,063	335	3,009
Apr		2,570	4,124	351	3,298
May		3,018	3,972	298	3,285
Jun		4,495	3,819	263	2,786
Jul		4,041	4,519	299	2,265
Aug		3,958	4,679	312	2,580
Sep		3,624	4,588	243	2,205
Oct		4,164	4,323	290	2,617
Nov		4,192	4,007	233	2,522
Dec		3,604	3,715	304	2,143
Peas, Blackeye					
Jan		184	56	24	3,813
Feb		281	57	24	3,691
Mar		167	54	20	3,308
Apr		177	50	18	2,842
May		410	44	18	4,066
Jun		403	54	28	3,587
Jul		351	68	9	2,847
Aug		361	61	8	2,146
Sep		345	76	3	2,001
Oct		421	106		2,029
Nov		514	77	8	1,902
Dec		427	84	16	1,885
Peas, Green					
Jan		29,325	24,513	13,384	5,616
Feb		24,171	21,202	10,983	4,888
Mar		19,098	16,243	8,880	5,230
Apr		13,743	12,242	6,055	4,072
May		9,496	10,956	3,311	3,522
Jun		13,422	10,710	7,715	4,885
Jul		45,680	38,335	24,597	9,189
Aug		38,455	43,432	23,912	8,205
Sep		34,954	40,743	22,601	7,820
Oct		28,842	34,351	21,154	6,766
Nov		23,468	30,165	18,573	5,860
Dec		18,869	26,365	16,271	5,189
Peas and Carrots Mixed					
Jan		981	1,447	100	452
Feb		916	1,372	120	461
Mar		1,058	1,275	89	510
Apr		1,184	1,150	38	476
May		1,082	816	102	357
Jun		1,159	637	101	474
Jul		1,256	913	109	440
Aug		1,139	1,189	56	420
Sep		1,035	1,344	166	484
Oct		1,073	1,547	135	429
Nov		962	1,336	133	394
Dec		985	1,138	61	384

See footnote(s) at end of table.

--continued

**Frozen Vegetables: Stocks in Cold Storage by Region
and United States, Monthly, 2003¹ (continued)**

Commodity and Month	Region				
	East South Central	West South Central	Mountain	Pacific	US Total
	<i>1,000 Pounds</i>	<i>1,000 Pounds</i>	<i>1,000 Pounds</i>	<i>1,000 Pounds</i>	<i>1,000 Pounds</i>
Onions, Other					
Jan		2,642	3,507	14,518	30,676
Feb		2,512	3,596	15,278	31,424
Mar		2,214	3,621	14,363	30,988
Apr		2,187	3,366	14,011	29,907
May		2,362	3,357	13,429	29,721
Jun		1,963	3,389	12,042	28,757
Jul		2,197	2,937	11,759	28,017
Aug		1,982	2,999	12,017	28,527
Sep		2,084	2,716	11,116	26,576
Oct		2,275	4,212	13,805	31,686
Nov		1,944	4,047	15,127	32,072
Dec		1,838	6,380	13,733	31,717
Peas, Blackeye					
Jan		1,031		144	5,252
Feb		1,014		211	5,278
Mar		878		172	4,599
Apr		815		261	4,163
May		720		234	5,492
Jun		1,055		213	5,340
Jul		888		307	4,470
Aug		774	1	292	3,643
Sep		712	2	248	3,388
Oct		723		291	3,570
Nov		624	1	244	3,370
Dec		620	1	259	3,292
Peas, Green					
Jan		3,265	9,147	62,862	148,112
Feb		2,972	6,642	47,713	118,571
Mar		2,390	4,451	34,401	90,693
Apr		2,357	2,309	23,281	64,059
May		1,766	1,593	18,465	49,109
Jun		3,049	6,574	116,481	162,836
Jul		3,246	14,771	167,188	303,006
Aug		3,249	13,259	163,313	293,825
Sep		3,129	12,685	155,191	277,123
Oct		3,078	11,937	134,034	240,162
Nov		2,913	11,500	119,119	211,598
Dec		2,801	10,788	100,567	180,850
Peas and Carrots Mixed					
Jan		786	3	3,516	7,285
Feb		893	3	3,331	7,096
Mar		867	24	2,907	6,730
Apr		783	15	2,734	6,380
May		756	16	3,407	6,536
Jun		592	15	4,919	7,897
Jul		487	66	4,091	7,362
Aug		579	70	5,257	8,710
Sep		602	26	6,325	9,982
Oct		586	22	5,667	9,459
Nov		523	21	5,606	8,975
Dec		591	21	3,401	6,581

See footnote(s) at end of table.

--continued

**Frozen Vegetables: Stocks in Cold Storage by Region
and United States, Monthly, 2003 ¹ (continued)**

Commodity and Month	Region				
	New England	Middle Atlantic	East North Central	West North Central	South Atlantic
	<i>1,000 Pounds</i>	<i>1,000 Pounds</i>	<i>1,000 Pounds</i>	<i>1,000 Pounds</i>	<i>1,000 Pounds</i>
Spinach					
Jan		15,667	3,969	211	4,192
Feb		11,944	3,548	190	3,319
Mar		10,475	3,944	199	5,135
Apr		14,966	4,665	175	5,741
May		16,467	5,423	774	5,170
Jun		15,937	5,007	718	4,906
Jul		14,693	5,005	798	4,969
Aug		13,171	5,051	346	4,714
Sep		9,143	4,845	174	4,322
Oct		9,257	4,175	144	3,812
Nov		8,344	3,988	80	3,283
Dec		7,279	3,654	62	3,987
Squash, Summer & Zucchini					
Jan		4,939	10,309	63	4,292
Feb		4,560	9,223	15	4,041
Mar		4,213	8,008	78	3,986
Apr		3,950	6,062	32	3,591
May		3,714	5,242	30	4,289
Jun		3,470	4,751	28	4,876
Jul		3,404	4,666	22	5,287
Aug		3,191	11,417	22	5,167
Sep		3,222	13,240	32	4,885
Oct		4,243	12,115	25	4,930
Nov		4,145	12,175	22	4,985
Dec		4,142	11,331	12	4,036
Southern Greens					
Jan		2,555	894	122	6,600
Feb		2,753	1,203	82	6,735
Mar		2,487	966	73	6,616
Apr		2,158	855	44	7,013
May		1,801	767	44	6,658
Jun		1,788	708	42	6,187
Jul		1,730	658	43	5,044
Aug		1,586	578	37	4,594
Sep		1,663	472	33	4,180
Oct		1,831	372	43	3,402
Nov		2,386	442	6	4,160
Dec		2,334	386		7,740

See footnote(s) at end of table.

--continued

**Frozen Vegetables: Stocks in Cold Storage by Region
and United States, Monthly, 2003 ¹ (continued)**

Commodity and Month	Region				
	East South Central	West South Central	Mountain	Pacific	US Total
	<i>1,000 Pounds</i>	<i>1,000 Pounds</i>	<i>1,000 Pounds</i>	<i>1,000 Pounds</i>	<i>1,000 Pounds</i>
Spinach					
Jan		16,445	24	19,276	59,784
Feb		19,475	21	19,169	57,666
Mar		20,879	34	36,928	77,594
Apr		16,877	23	58,478	100,925
May		15,155	19	68,192	111,200
Jun		13,476	20	64,458	104,522
Jul		11,583	46	56,276	93,370
Aug		10,284	93	50,107	83,766
Sep		8,235	54	43,351	70,124
Oct		7,025	87	37,386	61,886
Nov		6,471	78	32,684	54,928
Dec		7,976	84	23,450	46,492
Squash, Summer & Zucchini					
Jan		5,546	527	13,902	39,578
Feb		5,349	391	13,592	37,171
Mar		4,515	434	12,429	33,663
Apr		4,223	433	10,780	29,071
May		6,140	392	8,979	28,786
Jun		7,146	387	12,891	33,549
Jul		7,196	383	18,943	39,901
Aug		7,308	345	19,638	47,088
Sep		6,087	291	19,559	47,316
Oct		4,696	331	22,551	48,891
Nov		4,553	231	21,538	47,649
Dec		4,431	386	19,276	43,614
Southern Greens					
Jan		13,389		1,333	24,893
Feb		11,963		1,215	23,951
Mar		14,083		1,122	25,347
Apr		12,804		1,005	23,879
May		11,666		1,195	22,131
Jun		11,074		444	20,243
Jul		10,297		1,697	19,469
Aug		9,025		1,365	17,185
Sep		6,910		477	13,735
Oct		5,373		1,916	12,937
Nov		6,594		2,153	15,741
Dec		6,747		1,542	18,749

See footnote(s) at end of table.

--continued

**Frozen Vegetables: Stocks in Cold Storage by Region
and United States, Monthly, 2003 ¹ (continued)**

Commodity and Month	Region				
	New England	Middle Atlantic	East North Central	West North Central	South Atlantic
	<i>1,000 Pounds</i>	<i>1,000 Pounds</i>	<i>1,000 Pounds</i>	<i>1,000 Pounds</i>	<i>1,000 Pounds</i>
Other Vegetables					
Jan		38,843	37,075	12,331	20,726
Feb		37,950	35,866	11,462	21,096
Mar		37,721	31,891	10,808	26,116
Apr		35,716	28,455	10,674	24,427
May		33,232	28,013	9,808	26,065
Jun		32,066	25,528	7,946	26,221
Jul		32,021	26,678	6,705	26,316
Aug		37,204	35,743	7,062	29,071
Sep		39,076	44,181	9,102	30,497
Oct		40,963	46,630	11,776	31,225
Nov		39,762	45,590	11,898	28,066
Dec		37,114	43,329	11,182	26,213
Total Vegetables					
Jan		243,432	326,679	101,599	98,819
Feb		222,138	297,261	88,085	95,259
Mar		203,919	255,368	76,269	108,257
Apr		190,533	220,112	62,801	98,489
May		166,944	202,860	48,090	99,429
Jun		152,216	184,969	46,296	100,492
Jul		187,090	217,917	60,691	104,498
Aug		219,654	302,787	95,885	109,797
Sep		259,008	374,567	136,528	120,800
Oct		270,544	383,687	137,404	118,807
Nov		249,032	357,233	115,233	107,168
Dec		222,502	322,999	103,467	99,650

See footnote(s) at end of table.

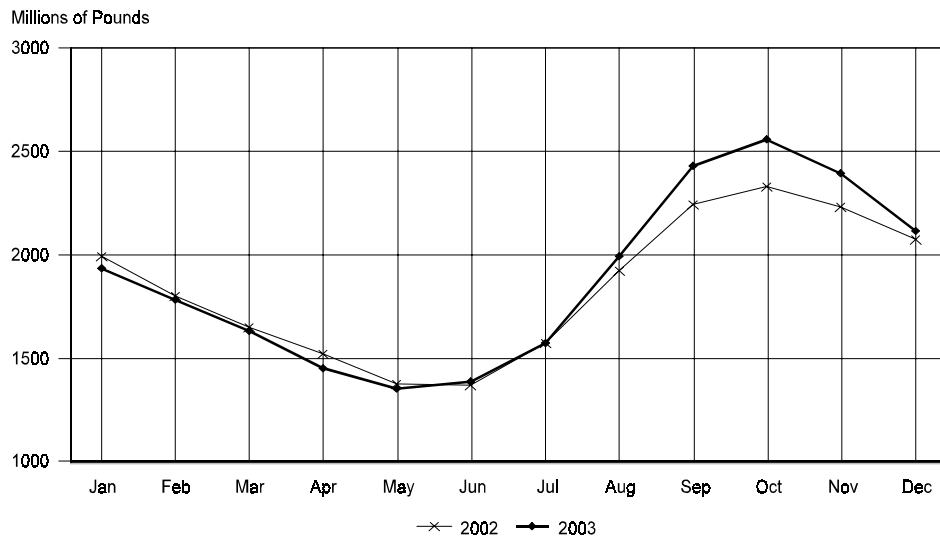
--continued

**Frozen Vegetables: Stocks in Cold Storage by Region
and United States, Monthly, 2003¹ (continued)**

Commodity and Month	Region				
	East South Central	West South Central	Mountain	Pacific	US Total
	<i>1,000 Pounds</i>	<i>1,000 Pounds</i>	<i>1,000 Pounds</i>	<i>1,000 Pounds</i>	<i>1,000 Pounds</i>
Other Vegetables					
Jan		32,591	8,122	146,620	296,308
Feb		40,785	7,743	134,374	289,276
Mar		40,784	7,501	128,610	283,431
Apr		38,457	7,214	112,128	257,071
May		36,954	7,010	113,092	254,174
Jun		37,109	8,044	128,642	265,556
Jul		36,366	8,712	135,167	271,965
Aug		36,702	9,778	160,799	316,359
Sep		42,498	7,359	185,384	358,097
Oct		43,196	7,654	186,388	367,832
Nov		41,550	7,553	185,055	359,474
Dec		37,714	7,002	166,945	329,499
Total Vegetables					
Jan		169,336	35,457	957,379	1,932,701
Feb		181,308	27,480	871,917	1,783,448
Mar		184,509	24,734	777,933	1,630,989
Apr		173,608	21,549	685,180	1,452,272
May		171,959	20,165	645,686	1,355,133
Jun		177,303	26,044	701,053	1,388,373
Jul		175,216	31,439	799,700	1,576,551
Aug		170,538	38,065	1,056,713	1,993,439
Sep		170,502	43,809	1,328,249	2,433,463
Oct		155,228	44,135	1,447,559	2,557,364
Nov		151,105	41,495	1,373,738	2,395,004
Dec		144,054	38,468	1,187,454	2,118,594

¹ New England combined with Middle Atlantic. East South Central combined with South Atlantic.

**Total Vegetables
Cold Storage Stocks, Years 2002 and 2003
United States**



**Potatoes: Stocks in Cold Storage by Region
and United States, Monthly, 2003**

Commodity and Month	Region				
	New England	Middle Atlantic	East North Central	West North Central	South Atlantic
	<i>1,000 Pounds</i>	<i>1,000 Pounds</i>	<i>1,000 Pounds</i>	<i>1,000 Pounds</i>	<i>1,000 Pounds</i>
French Fries					
Jan	38,910	30,744	56,619	105,110	24,758
Feb	35,287	32,476	54,841	117,700	34,059
Mar	31,190	31,328	58,361	112,581	26,661
Apr	31,976	31,831	52,266	89,750	27,969
May	36,703	32,861	58,568	94,611	27,918
Jun	37,744	33,923	60,987	101,312	26,553
Jul	40,604	30,852	51,937	97,705	24,183
Aug	32,802	28,059	53,422	83,550	22,792
Sep	33,996	31,863	60,269	107,473	29,488
Oct	35,966	35,190	61,789	115,566	29,831
Nov	34,207	37,699	61,013	116,298	28,249
Dec	29,930	32,055	55,420	106,784	24,022
Other Potatoes					
Jan	5,061	12,316	31,508	6,926	4,174
Feb	5,542	13,401	30,964	8,568	3,688
Mar	4,532	16,645	36,278	7,932	3,572
Apr	3,794	20,214	33,917	7,517	3,637
May	3,120	17,395	33,980	7,618	3,936
Jun	4,045	17,807	33,811	8,432	4,287
Jul	4,468	16,024	30,161	8,982	4,207
Aug	3,468	13,840	25,992	5,629	4,150
Sep	3,479	13,577	25,495	4,907	4,103
Oct	4,311	13,506	27,366	5,430	4,369
Nov	4,843	13,040	31,431	6,262	4,292
Dec	4,374	11,930	29,752	7,011	3,654
Total Potatoes					
Jan	43,971	43,060	88,127	112,036	28,932
Feb	40,829	45,877	85,805	126,268	37,747
Mar	35,722	47,973	94,639	120,513	30,233
Apr	35,770	52,045	86,183	97,267	31,606
May	39,823	50,256	92,548	102,229	31,854
Jun	41,789	51,730	94,798	109,744	30,840
Jul	45,072	46,876	82,098	106,687	28,390
Aug	36,270	41,899	79,414	89,179	26,942
Sep	37,475	45,440	85,764	112,380	33,591
Oct	40,277	48,696	89,155	120,996	34,200
Nov	39,050	50,739	92,444	122,560	32,541
Dec	34,304	43,985	85,172	113,795	27,676

--continued

**Potatoes: Stocks in Cold Storage by Region
and United States, Monthly, 2003 (continued)**

Commodity and Month	Region				
	East South Central	West South Central	Mountain	Pacific	US Total
	<i>1,000 Pounds</i>	<i>1,000 Pounds</i>	<i>1,000 Pounds</i>	<i>1,000 Pounds</i>	<i>1,000 Pounds</i>
French Fries					
Jan	2,252	11,129	211,537	436,101	917,160
Feb	2,191	10,695	199,080	464,163	950,492
Mar	8,248	10,425	218,658	452,776	950,228
Apr	6,848	11,199	212,846	434,394	899,079
May	7,877	11,981	200,609	395,415	866,543
Jun	7,944	9,453	233,225	389,053	900,194
Jul	6,211	9,241	216,493	382,278	859,504
Aug	6,889	10,716	180,677	402,435	821,342
Sep	6,014	12,047	191,008	421,776	893,934
Oct	7,540	11,921	203,621	467,166	968,590
Nov	7,465	11,313	208,263	463,601	968,108
Dec	6,163	12,002	187,051	416,094	869,521
Other Potatoes					
Jan	597	26,848	51,874	116,589	255,893
Feb	684	24,140	44,639	128,857	260,483
Mar	590	28,418	41,273	127,896	267,136
Apr	646	27,094	42,994	111,631	251,444
May	896	26,105	39,980	107,053	240,083
Jun	948	26,888	53,534	131,842	281,594
Jul	735	30,788	53,145	122,425	270,935
Aug	643	21,783	50,172	123,402	249,079
Sep	469	24,749	54,178	126,807	257,764
Oct	1,394	26,293	54,997	141,726	279,392
Nov	1,296	22,260	55,638	125,647	264,709
Dec	1,359	23,946	50,376	118,495	250,897
Total Potatoes					
Jan	2,849	37,977	263,411	552,690	1,173,053
Feb	2,875	34,835	243,719	593,020	1,210,975
Mar	8,838	38,843	259,931	580,672	1,217,364
Apr	7,494	38,293	255,840	546,025	1,150,523
May	8,773	38,086	240,589	502,468	1,106,626
Jun	8,892	36,341	286,759	520,895	1,181,788
Jul	6,946	40,029	269,638	504,703	1,130,439
Aug	7,532	32,499	230,849	525,837	1,070,421
Sep	6,483	36,796	245,186	548,583	1,151,698
Oct	8,934	38,214	258,618	608,892	1,247,982
Nov	8,761	33,573	263,901	589,248	1,232,817
Dec	7,522	35,948	237,427	534,589	1,120,418

**Beef: Stocks in Cold Storage by Region
and United States, Monthly, 2003**

Commodity and Month	Region				
	New England	Middle Atlantic	East North Central	West North Central	South Atlantic
	<i>1,000 Pounds</i>	<i>1,000 Pounds</i>	<i>1,000 Pounds</i>	<i>1,000 Pounds</i>	<i>1,000 Pounds</i>
Boneless ¹					
Jan	10,423	54,969	52,808	139,293	25,444
Feb	6,021	49,310	46,010	131,079	20,560
Mar	1,911	42,618	40,933	119,602	20,426
Apr	1,567	42,226	41,548	116,555	19,155
May	1,521	41,534	39,353	109,736	26,892
Jun	1,470	41,012	37,281	105,402	25,144
Jul	1,323	42,453	33,099	99,759	26,250
Aug	1,337	46,237	29,370	98,708	25,854
Sep	1,309	48,436	31,085	100,591	26,192
Oct	1,359	51,876	34,541	92,541	27,910
Nov	1,346	50,599	35,380	99,743	27,931
Dec	1,339	50,841	37,388	107,633	30,599
Beef Cuts ²					
Jan	5,163	2,403	10,430	12,119	2,654
Feb	4,200	2,203	10,272	11,039	2,857
Mar	3,573	2,192	8,304	11,422	3,277
Apr	1,962	2,347	7,683	10,449	3,248
May	1,658	1,755	7,328	8,430	2,607
Jun	1,723	2,554	6,976	7,477	2,614
Jul	2,150	2,445	7,620	7,070	3,221
Aug	1,939	2,721	8,426	7,172	3,323
Sep	2,285	2,544	8,626	7,830	3,736
Oct	2,036	2,649	9,549	7,684	3,356
Nov	1,137	2,399	9,032	7,814	3,550
Dec	636	2,299	10,201	8,755	3,576
Total Beef					
Jan	15,586	57,372	63,238	151,412	28,098
Feb	10,221	51,513	56,282	142,118	23,417
Mar	5,484	44,810	49,237	131,024	23,703
Apr	3,529	44,573	49,231	127,004	22,403
May	3,179	43,289	46,681	118,166	29,499
Jun	3,193	43,566	44,257	112,879	27,758
Jul	3,473	44,898	40,719	106,829	29,471
Aug	3,276	48,958	37,796	105,880	29,177
Sep	3,594	50,980	39,711	108,421	29,928
Oct	3,395	54,525	44,090	100,225	31,266
Nov	2,483	52,998	44,412	107,557	31,481
Dec	1,975	53,140	47,589	116,388	34,175
Beef (Govt Owned)					
Jan					
Feb					
Mar					
Apr					
May					
Jun					
Jul					
Aug					
Sep					
Oct					
Nov					
Dec					

See footnote(s) at end of table.

--continued

**Beef: Stocks in Cold Storage by Region and
United States, Monthly, 2003 (continued)**

Commodity and Month	Region				
	East South Central	West South Central	Mountain	Pacific	US Total
	<i>1,000 Pounds</i>	<i>1,000 Pounds</i>	<i>1,000 Pounds</i>	<i>1,000 Pounds</i>	<i>1,000 Pounds</i>
Boneless ¹					
Jan	4,794	72,401	10,826	47,074	418,032
Feb	3,943	70,582	9,942	42,717	380,164
Mar	4,057	65,807	7,429	42,199	344,982
Apr	3,928	63,415	7,449	40,718	336,561
May	3,503	63,947	8,936	41,488	336,910
Jun	3,115	59,727	8,902	40,502	322,555
Jul	3,360	61,358	9,248	40,830	317,680
Aug	3,326	59,893	9,198	42,865	316,788
Sep	3,062	58,330	9,664	44,592	323,261
Oct	2,874	55,279	8,844	44,314	319,538
Nov	2,816	53,920	8,718	42,314	322,767
Dec	2,645	60,830	7,713	42,811	341,799
Beef Cuts ²					
Jan	3,875	7,531	13,816	6,396	64,387
Feb	3,825	7,185	14,880	5,230	61,691
Mar	3,623	7,250	13,168	5,357	58,166
Apr	3,474	7,004	11,962	4,963	53,092
May	3,094	6,950	11,819	4,571	48,212
Jun	3,085	8,051	11,856	4,586	48,922
Jul	3,242	7,872	10,371	6,577	50,568
Aug	3,490	8,466	10,940	7,727	54,204
Sep	3,561	8,774	11,057	8,154	56,567
Oct	4,180	8,764	8,644	8,771	55,633
Nov	3,846	7,465	7,479	8,281	51,003
Dec	3,929	8,268	7,530	8,091	53,285
Total Beef					
Jan	8,669	79,932	24,642	53,470	482,419
Feb	7,768	77,767	24,822	47,947	441,855
Mar	7,680	73,057	20,597	47,556	403,148
Apr	7,402	70,419	19,411	45,681	389,653
May	6,597	70,897	20,755	46,059	385,122
Jun	6,200	67,778	20,758	45,088	371,477
Jul	6,602	69,230	19,619	47,407	368,248
Aug	6,816	68,359	20,138	50,592	370,992
Sep	6,623	67,104	20,721	52,746	379,828
Oct	7,054	64,043	17,488	53,085	375,171
Nov	6,662	61,385	16,197	50,595	373,770
Dec	6,574	69,098	15,243	50,902	395,084
Beef (Govt Owned)					
Jan					2,563
Feb					2,487
Mar					2,487
Apr					1,932
May					1,760
Jun					1,280
Jul					2,249
Aug					2,277
Sep					2,197
Oct					5,482
Nov					7,789
Dec					6,317

See footnote(s) at end of table.

--continued

Pork: Stocks in Cold Storage by Region and United States, Monthly, 2003

Commodity and Month	Region				
	New England	Middle Atlantic	East North Central	West North Central	South Atlantic
	<i>1,000 Pounds</i>	<i>1,000 Pounds</i>	<i>1,000 Pounds</i>	<i>1,000 Pounds</i>	<i>1,000 Pounds</i>
Picnics, Bone-in					
Jan					
Feb					
Mar					
Apr					
May					
Jun					
Jul					
Aug					
Sep					
Oct					
Nov					
Dec					
Hams					
Bone-in					
Jan					
Feb					
Mar					
Apr					
May					
Jun					
Jul					
Aug					
Sep					
Oct					
Nov					
Dec					
Boneless ³					
Jan					
Feb					
Mar					
Apr					
May					
Jun					
Jul					
Aug					
Sep					
Oct					
Nov					
Dec					
Total Hams					
Jan					
Feb					
Mar					
Apr					
May					
Jun					
Jul					
Aug					
Sep					
Oct					
Nov					
Dec					

See footnote(s) at end of table.

--continued

**Pork: Stocks in Cold Storage by Region and
United States, Monthly, 2003 (continued)**

Commodity and Month	Region				
	East South Central	West South Central	Mountain	Pacific	US Total
	<i>1,000 Pounds</i>	<i>1,000 Pounds</i>	<i>1,000 Pounds</i>	<i>1,000 Pounds</i>	<i>1,000 Pounds</i>
Picnics, Bone-in					
Jan					10,365
Feb					11,552
Mar					12,023
Apr					10,195
May					9,258
Jun					7,822
Jul					7,253
Aug					6,208
Sep					10,530
Oct					11,999
Nov					11,377
Dec					14,591
Hams					
Bone-in					
Jan					41,641
Feb					49,131
Mar					43,731
Apr					42,955
May					52,986
Jun					66,249
Jul					72,991
Aug					85,245
Sep					89,107
Oct					75,229
Nov					44,178
Dec					25,082
Boneless ³					
Jan					37,808
Feb					40,063
Mar					47,218
Apr					48,735
May					51,609
Jun					46,970
Jul					48,260
Aug					42,541
Sep					42,895
Oct					35,644
Nov					29,430
Dec					24,774
Total Hams					
Jan					79,449
Feb					89,194
Mar					90,949
Apr					91,690
May					104,595
Jun					113,219
Jul					121,251
Aug					127,786
Sep					132,002
Oct					110,873
Nov					73,608
Dec					49,856

See footnote(s) at end of table.

--continued

**Pork: Stocks in Cold Storage by Region and
United States, Monthly, 2003 (continued)**

Commodity and Month	Region				
	New England	Middle Atlantic	East North Central	West North Central	South Atlantic
	<i>1,000 Pounds</i>	<i>1,000 Pounds</i>	<i>1,000 Pounds</i>	<i>1,000 Pounds</i>	<i>1,000 Pounds</i>
Bellies					
Jan					
Feb					
Mar					
Apr					
May					
Jun					
Jul					
Aug					
Sep					
Oct					
Nov					
Dec					
Loins					
Bone-in					
Jan					
Feb					
Mar					
Apr					
May					
Jun					
Jul					
Aug					
Sep					
Oct					
Nov					
Dec					
Boneless ⁴					
Jan					
Feb					
Mar					
Apr					
May					
Jun					
Jul					
Aug					
Sep					
Oct					
Nov					
Dec					
Total Loins					
Jan					
Feb					
Mar					
Apr					
May					
Jun					
Jul					
Aug					
Sep					
Oct					
Nov					
Dec					

See footnote(s) at end of table.

--continued

**Pork: Stocks in Cold Storage by Region and
United States, Monthly, 2003 (continued)**

Commodity and Month	Region				
	East South Central	West South Central	Mountain	Pacific	US Total
	<i>1,000 Pounds</i>	<i>1,000 Pounds</i>	<i>1,000 Pounds</i>	<i>1,000 Pounds</i>	<i>1,000 Pounds</i>
Bellies					
Jan					35,354
Feb					38,278
Mar					42,971
Apr					48,542
May					45,870
Jun					43,504
Jul					32,075
Aug					17,900
Sep					10,180
Oct					21,135
Nov					33,073
Dec					49,017
Loins					
Bone-in					
Jan					22,879
Feb					22,794
Mar					20,070
Apr					17,510
May					16,095
Jun					12,628
Jul					11,546
Aug					10,341
Sep					10,395
Oct					12,435
Nov					20,678
Dec					26,175
Boneless ⁴					
Jan					21,167
Feb					21,542
Mar					19,706
Apr					20,654
May					15,420
Jun					16,119
Jul					16,065
Aug					18,908
Sep					14,241
Oct					19,850
Nov					19,446
Dec					21,736
Total Loins					
Jan					44,046
Feb					44,336
Mar					39,776
Apr					38,164
May					31,515
Jun					28,747
Jul					27,611
Aug					29,249
Sep					24,636
Oct					32,285
Nov					40,124
Dec					47,911

See footnote(s) at end of table.

--continued

**Pork: Stocks in Cold Storage by Region and
United States, Monthly, 2003 (continued)**

Commodity and Month	Region				
	New England	Middle Atlantic	East North Central	West North Central	South Atlantic
	<i>1,000 Pounds</i>	<i>1,000 Pounds</i>	<i>1,000 Pounds</i>	<i>1,000 Pounds</i>	<i>1,000 Pounds</i>
Ribs ⁵					
Jan	447	2,079	34,544	39,668	11,857
Feb	441	2,055	34,686	38,213	10,284
Mar	438	2,210	34,110	36,102	9,948
Apr	421	2,211	32,793	34,044	9,655
May	341	1,970	23,669	26,516	7,877
Jun	274	1,758	20,186	18,071	6,007
Jul	238	1,689	17,193	16,347	5,670
Aug	190	1,543	16,056	14,638	6,539
Sep	211	1,349	13,405	17,670	7,646
Oct	232	1,222	14,935	23,517	6,691
Nov	301	1,354	16,825	30,294	7,388
Dec	359	1,206	18,735	39,307	9,513
Butts					
Jan					
Feb					
Mar					
Apr					
May					
Jun					
Jul					
Aug					
Sep					
Oct					
Nov					
Dec					
Trimmings ⁶					
Jan	155	1,246	11,157	32,721	3,242
Feb	196	1,260	10,859	33,011	2,220
Mar	200	1,291	12,732	33,794	1,903
Apr	115	1,005	13,397	32,266	2,086
May	103	925	10,864	27,596	1,890
Jun	94	799	9,044	24,533	1,767
Jul	46	618	8,066	20,952	1,484
Aug	37	692	8,788	19,675	1,447
Sep	39	590	7,714	16,254	1,892
Oct	43	373	9,861	17,274	2,004
Nov	48	423	11,176	19,880	2,068
Dec	48	385	11,191	26,471	2,305
Other Pork ⁷					
Jan	2,216	1,220	13,311	36,326	18,084
Feb	2,081	960	12,137	36,324	15,599
Mar	2,097	874	12,840	37,571	15,826
Apr	1,822	889	11,994	29,662	15,032
May	2,042	836	15,605	31,357	15,331
Jun	1,875	733	15,127	27,214	14,714
Jul	1,698	778	11,462	25,547	13,861
Aug	1,355	900	10,091	26,477	11,765
Sep	1,486	626	10,882	29,418	13,007
Oct	1,590	935	11,044	34,712	13,865
Nov	1,637	993	10,604	34,128	13,952
Dec	1,794	1,220	11,958	38,917	14,875

See footnote(s) at end of table.

--continued

**Pork: Stocks in Cold Storage by Region and
United States, Monthly, 2003 (continued)**

Commodity and Month	Region				
	East South Central	West South Central	Mountain	Pacific	US Total
	<i>1,000 Pounds</i>	<i>1,000 Pounds</i>	<i>1,000 Pounds</i>	<i>1,000 Pounds</i>	<i>1,000 Pounds</i>
Ribs ⁵					
Jan	3,233	4,729	184	1,692	98,433
Feb	4,359	4,876	145	1,940	96,999
Mar	5,349	5,972	313	2,278	96,720
Apr	5,798	5,433	312	2,210	92,877
May	4,639	4,183	146	2,320	71,661
Jun	4,173	3,277	108	1,716	55,570
Jul	3,846	2,853	160	1,216	49,212
Aug	2,381	1,911	139	2,642	46,039
Sep	2,041	1,770	166	2,300	46,558
Oct	2,245	1,822	240	2,790	53,694
Nov	2,741	2,645	282	3,147	64,977
Dec	2,496	3,367	322	4,690	79,995
Butts					
Jan					18,066
Feb					17,555
Mar					17,264
Apr					15,991
May					12,939
Jun					8,805
Jul					8,594
Aug					7,988
Sep					8,273
Oct					7,422
Nov					11,285
Dec					12,176
Trimmings ⁶					
Jan	199	5,934	10	379	55,043
Feb	223	6,575	18	759	55,121
Mar	318	7,151	14	1,069	58,472
Apr	364	6,927	11	1,007	57,178
May	284	5,617	9	923	48,211
Jun	213	4,877	16	816	42,159
Jul	199	4,126	5	749	36,245
Aug	240	3,872	4	556	35,311
Sep	270	3,530	13	755	31,057
Oct	250	3,707	20	903	34,435
Nov	280	3,693	56	708	38,332
Dec	165	4,142	25	583	45,315
Other Pork ⁷					
Jan	3,375	3,292	226	2,677	80,727
Feb	3,282	3,466	196	2,951	76,996
Mar	3,452	2,841	190	2,673	78,364
Apr	3,253	3,095	181	2,653	68,581
May	3,604	3,187	72	2,549	74,583
Jun	3,286	2,826	105	2,250	68,130
Jul	3,095	3,140	68	1,917	61,566
Aug	2,771	2,861	49	1,919	58,188
Sep	3,474	2,709	78	2,443	64,123
Oct	3,723	2,690	246	2,451	71,256
Nov	3,605	2,691	243	1,960	69,813
Dec	2,832	2,622	226	1,791	76,235

See footnote(s) at end of table.

--continued

**Pork: Stocks in Cold Storage by Region and
United States, Monthly, 2003 (continued)**

Commodity and Month	Region				
	New England	Middle Atlantic	East North Central	West North Central	South Atlantic
	<i>1,000 Pounds</i>	<i>1,000 Pounds</i>	<i>1,000 Pounds</i>	<i>1,000 Pounds</i>	<i>1,000 Pounds</i>
Variety Meats ⁸					
Jan					
Feb					
Mar					
Apr					
May					
Jun					
Jul					
Aug					
Sep					
Oct					
Nov					
Dec					
Unclassified ⁹					
Jan					
Feb					
Mar					
Apr					
May					
Jun					
Jul					
Aug					
Sep					
Oct					
Nov					
Dec					
Total Frozen Pork					
Jan	3,323	13,849	95,965	217,639	83,545
Feb	3,217	14,379	95,734	227,353	80,141
Mar	3,192	14,994	96,007	228,680	85,605
Apr	2,821	15,182	89,787	221,946	84,956
May	2,947	15,518	84,335	213,626	81,667
Jun	2,713	14,865	78,461	192,210	80,167
Jul	2,506	15,425	70,602	178,878	84,121
Aug	2,084	13,904	70,485	171,639	93,087
Sep	2,250	14,509	66,137	170,476	99,771
Oct	2,559	14,110	72,232	182,475	88,233
Nov	2,669	13,753	72,796	183,013	74,265
Dec	2,911	11,339	72,235	218,782	73,757
Pork (Govt Owned)					
Jan					
Feb					
Mar					
Apr					
May					
Jun					
Jul					
Aug					
Sep					
Oct					
Nov					
Dec					

See footnote(s) at end of table.

--continued

**Pork: Stocks in Cold Storage by Region and
United States, Monthly, 2003 (continued)**

Commodity and Month	Region				
	East South Central	West South Central	Mountain	Pacific	US Total
	<i>1,000 Pounds</i>	<i>1,000 Pounds</i>	<i>1,000 Pounds</i>	<i>1,000 Pounds</i>	<i>1,000 Pounds</i>
Variety Meats ⁸					
Jan					40,386
Feb					43,687
Mar					46,083
Apr					49,824
May					51,276
Jun					47,736
Jul					55,857
Aug					60,517
Sep					56,845
Oct					50,403
Nov					42,107
Dec					39,676
Unclassified ⁹					
Jan					50,788
Feb					45,995
Mar					47,877
Apr					46,951
May					49,811
Jun					44,320
Jul					40,990
Aug					41,053
Sep					50,948
Oct					53,341
Nov					54,244
Dec					55,884
Total Frozen Pork					
Jan	35,609	37,234	2,813	22,680	512,657
Feb	35,056	38,467	2,909	22,457	519,713
Mar	36,790	38,627	3,052	23,552	530,499
Apr	38,068	39,084	4,005	24,144	519,993
May	39,055	37,285	3,789	21,497	499,719
Jun	36,700	30,907	3,655	20,334	460,012
Jul	36,889	31,444	4,236	16,553	440,654
Aug	32,314	28,211	3,958	14,557	430,239
Sep	33,360	28,039	4,090	16,520	435,152
Oct	33,013	31,563	4,998	17,660	446,843
Nov	34,950	32,293	6,673	18,528	438,940
Dec	32,720	32,511	5,095	21,306	470,656
Pork (Govt Owned)					
Jan					1,692
Feb					1,370
Mar					1,096
Apr					1,298
May					910
Jun					1,069
Jul					784
Aug					746
Sep					942
Oct					1,461
Nov					1,930
Dec					1,583

See footnote(s) at end of table.

--continued

**Other Meat: Stocks in Cold Storage by Region and
United States, Monthly, 2003**

Commodity and Month	Region				
	New England	Middle Atlantic	East North Central	West North Central	South Atlantic
	<i>1,000 Pounds</i>	<i>1,000 Pounds</i>	<i>1,000 Pounds</i>	<i>1,000 Pounds</i>	<i>1,000 Pounds</i>
Veal					
Jan		1,607	1,035	249	49
Feb		1,466	864	221	46
Mar		1,470	1,103	186	41
Apr		986	1,128	173	38
May		1,104	1,110	198	33
Jun		762	1,006	176	32
Jul		572	910	194	31
Aug	16	863	947	154	47
Sep		785	914	158	42
Oct		702	837	156	209
Nov		937	838	193	141
Dec		1,167	795	198	142
Lamb and Mutton					
Jan	4	659	1,290	511	276
Feb	4	571	1,133	404	294
Mar	3	443	993	441	284
Apr	3	1,719	813	786	216
May	4	1,855	929	950	240
Jun	3	1,996	873	805	216
Jul	4	2,258	796	735	218
Aug	4	2,117	832	892	258
Sep	3	1,967	901	712	817
Oct	3	518	928	565	797
Nov	4	500	872	1,019	880
Dec	3	368	587	470	885
Total Other Meat					
Jan	4	2,266	2,325	760	325
Feb	4	2,037	1,997	625	340
Mar	3	1,913	2,096	627	325
Apr	3	2,705	1,941	959	254
May	4	2,959	2,039	1,148	273
Jun	3	2,758	1,879	981	248
Jul	4	2,830	1,706	929	249
Aug	20	2,980	1,779	1,046	305
Sep	3	2,752	1,815	870	859
Oct	3	1,220	1,765	721	1,006
Nov	4	1,437	1,710	1,212	1,021
Dec	3	1,535	1,382	668	1,027

See footnote(s) at end of table.

--continued

**Other Meat: Stocks in Cold Storage by Region and
United States, Monthly, 2003 (continued)**

Commodity and Month	Region				
	East South Central	West South Central	Mountain	Pacific	US Total
	<i>1,000 Pounds</i>	<i>1,000 Pounds</i>	<i>1,000 Pounds</i>	<i>1,000 Pounds</i>	<i>1,000 Pounds</i>
Veal					
Jan	342	167	2	3,635	7,086
Feb	170	146	8	3,190	6,111
Mar	23	137	1	2,964	5,925
Apr	105	186	3	2,353	4,972
May	184	240	2	2,233	5,104
Jun	113	189	1	1,793	4,072
Jul	80	204	1	1,805	3,797
Aug	59	397	1	1,681	4,165
Sep	48	329	1	2,320	4,597
Oct	61	365	1	2,431	4,762
Nov	76	433	1	2,349	4,968
Dec	31	381	1	2,312	5,027
Lamb and Mutton					
Jan	11	254	81	3,146	6,232
Feb	8	157	110	1,382	4,063
Mar	5	148	56	1,527	3,900
Apr	5	136	13	1,325	5,016
May	4	336	32	1,488	5,838
Jun	3	214	36	1,281	5,427
Jul	5	235	36	1,642	5,929
Aug	5	231	15	1,501	5,855
Sep	5	226	37	1,542	6,210
Oct	13	362	8	1,291	4,485
Nov	14	301	55	1,238	4,883
Dec	5	224	39	1,214	3,795
Total Other Meat					
Jan	353	421	83	6,781	13,318
Feb	178	303	118	4,572	10,174
Mar	28	285	57	4,491	9,825
Apr	110	322	16	3,678	9,988
May	188	576	34	3,721	10,942
Jun	116	403	37	3,074	9,499
Jul	85	439	37	3,447	9,726
Aug	64	628	16	3,182	10,020
Sep	53	555	38	3,862	10,807
Oct	74	727	9	3,722	9,247
Nov	90	734	56	3,587	9,851
Dec	36	605	40	3,526	8,822

See footnote(s) at end of table.

--continued

Canned and Total Meat: Stocks in Cold Storage by Region and United States, Monthly, 2003

Commodity and Month	Region				
	New England	Middle Atlantic	East North Central	West North Central	South Atlantic
	<i>1,000 Pounds</i>	<i>1,000 Pounds</i>	<i>1,000 Pounds</i>	<i>1,000 Pounds</i>	<i>1,000 Pounds</i>
Canned Hams					
Jan					
Feb					
Mar					
Apr					
May					
Jun					
Jul					
Aug					
Sep					
Oct					
Nov					
Dec					
Other Canned					
Jan					
Feb					
Mar					
Apr					
May					
Jun					
Jul					
Aug					
Sep					
Oct					
Nov					
Dec					
Total Canned					
Jan					
Feb					
Mar					
Apr					
May					
Jun					
Jul					
Aug					
Sep					
Oct					
Nov					
Dec					
Total Meat					
Jan	18,918	74,989	162,085	373,342	112,064
Feb	13,446	69,416	154,677	373,629	103,992
Mar	8,683	63,195	147,995	363,773	109,725
Apr	6,358	62,714	141,038	353,759	107,719
May	6,185	62,174	133,563	337,145	111,555
Jun	5,916	61,586	125,037	311,113	108,309
Jul	6,026	63,545	113,437	291,681	113,979
Aug	5,423	66,225	110,254	283,610	122,707
Sep	5,854	68,556	108,013	285,008	130,695
Oct	5,963	70,124	118,349	288,166	120,634
Nov	5,189	68,667	119,123	296,066	106,887
Dec	4,893	66,190	121,490	339,367	109,056

See footnote(s) at end of table.

--continued

Canned and Total Meat: Stocks in Cold Storage by Region and United States, Monthly, 2003 (continued)

Commodity and Month	Region				
	East South Central	West South Central	Mountain	Pacific	US Total
	<i>1,000 Pounds</i>	<i>1,000 Pounds</i>	<i>1,000 Pounds</i>	<i>1,000 Pounds</i>	<i>1,000 Pounds</i>
Canned Hams					
Jan					5,725
Feb					5,842
Mar					7,775
Apr					6,371
May					4,939
Jun					6,070
Jul					5,706
Aug					5,459
Sep					5,761
Oct					5,230
Nov					4,727
Dec					3,945
Other Canned					
Jan					1,049
Feb					665
Mar					643
Apr					771
May					786
Jun					429
Jul					685
Aug					607
Sep					577
Oct					425
Nov					778
Dec					451
Total Canned					
Jan					6,774
Feb					6,507
Mar					8,418
Apr					7,142
May					5,725
Jun					6,499
Jul					6,391
Aug					6,066
Sep					6,338
Oct					5,655
Nov					5,505
Dec					4,396
Total Meat					
Jan	44,631	117,650	27,547	83,942	1,015,168
Feb	43,002	116,672	27,852	75,563	978,249
Mar	44,613	111,994	25,752	76,160	951,890
Apr	45,580	109,855	25,758	73,995	926,776
May	45,841	108,800	24,578	71,667	901,508
Jun	43,017	99,486	24,450	68,573	847,487
Jul	43,577	101,184	23,892	67,698	825,019
Aug	39,194	97,206	24,112	68,586	817,317
Sep	40,037	95,705	24,849	73,408	832,125
Oct	40,141	96,380	22,495	74,664	836,916
Nov	41,702	94,459	22,926	73,047	828,066
Dec	39,330	102,219	20,378	76,035	878,958

¹ Includes all boxed boneless beef, such as ground beef, roasts, steaks, loins, strips, rounds, trimmings, etc. Variety meats (edible offal), such as tongues, livers, hearts, kidneys, and other organs removed from slaughtered beef, are included as miscellaneous freezer stocks.

² Includes all boxed primal beef cuts, bone-in.

³ Includes full ham, bone removed and individual muscles separated.

⁴ Includes pork tenderloins.

⁵ Includes spareribs and backribs.

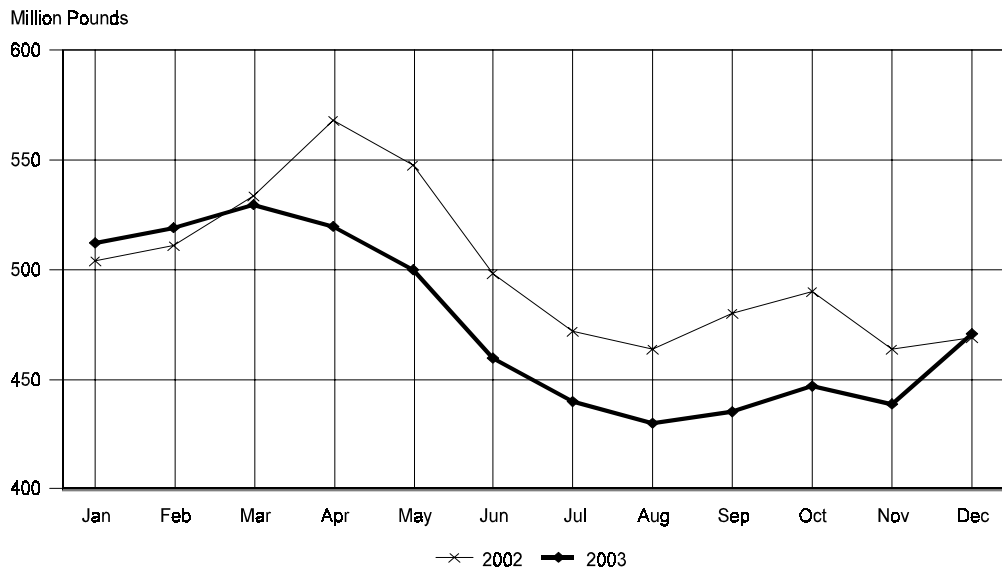
⁶ Includes 42% regular trimmings, 72% special trimmings, boneless picnic meat, jowls, neckbone trimmings, blade, cheek, head, and shank meat, etc. Packaged bacon, sausage, and processed items, such as hot dogs and luncheon meats, are included in miscellaneous cooler or freezer stocks.

⁷ Includes ears, tails, feet, neckbones and snouts.

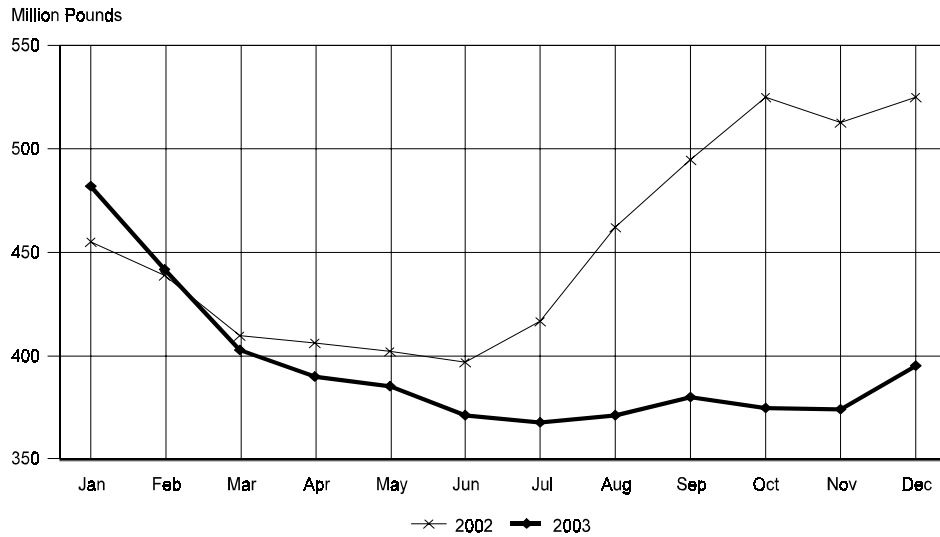
⁸ Includes tongues, kidneys, livers, stomachs, hearts, chitterlings, salivary glands, and other organs removed from slaughtered hogs.

⁹ Includes pork unable to be classified elsewhere in this report.

Total Frozen Pork
Cold Storage Stocks, Years 2002 and 2003
United States



Total Frozen Beef
Cold Storage Stocks, Years 2002 and 2003
United States



**Miscellaneous Cooler and Freezer: Stocks in Cold Storage,
United States, Monthly, 2003**

Month	Miscellaneous Commodities		
	Cooler	Freezer	Total
	<i>1,000 Pounds</i>	<i>1,000 Pounds</i>	<i>1,000 Pounds</i>
Jan	717,071	2,110,706	2,827,777
Feb	659,032	2,207,208	2,866,240
Mar	608,103	2,272,686	2,880,789
Apr	626,681	2,186,538	2,813,219
May	626,155	2,180,026	2,806,181
Jun	567,979	2,241,809	2,809,788
Jul	527,329	2,115,043	2,642,372
Aug	558,991	2,272,871	2,831,862
Sep	819,759	2,304,872	3,124,631
Oct	1,157,026	2,352,782	3,509,808
Nov	1,069,010	2,116,616	3,185,626
Dec	818,846	2,118,248	2,937,094

**Total Commodities Stored: Stocks in Cold Storage,
United States, Monthly, 2003**

Month	Total Commodities Stored		
	In Cooler	In Freezer	Total All Commodities
	<i>1,000 Pounds</i>	<i>1,000 Pounds</i>	<i>1,000 Pounds</i>
Jan	5,880,133	10,645,784	16,525,917
Feb	5,213,939	10,531,789	15,745,728
Mar	4,353,635	10,420,143	14,773,778
Apr	3,786,553	10,248,680	14,035,233
May	3,280,896	10,294,546	13,575,442
Jun	2,816,315	10,446,875	13,263,190
Jul	2,382,802	10,389,546	12,772,348
Aug	1,907,495	10,698,492	12,605,987
Sep	5,031,420	10,929,643	15,961,063
Oct	8,231,861	11,179,584	19,411,445
Nov	7,430,828	10,457,846	17,888,674
Dec	6,464,831	10,200,379	16,665,210

Stocks in Cold Storage: Blackberries, Red Raspberries, and Strawberries by Type of Pack, United States, Monthly, 2003

Commodity	Month					
	Jan	Feb	Mar	Apr	May	Jun
	<i>1,000 Pounds</i>	<i>1,000 Pounds</i>	<i>1,000 Pounds</i>	<i>1,000 Pounds</i>	<i>1,000 Pounds</i>	<i>1,000 Pounds</i>
Blackberries						
IQF	12,392	11,383	10,515	8,235	5,522	5,149
Pails and Tubs	1,570	1,390	1,361	1,109	851	1,140
Barrels, 400 lbs	4,810	3,954	3,862	3,503	2,373	1,897
Concentrate	623	589	527	441	670	461
Total	19,395	17,316	16,265	13,288	9,416	8,647
Red Raspberries						
IQF	15,029	14,082	12,607	11,051	9,997	10,981
Pails and Tubs	9,711	8,821	7,319	5,607	4,155	3,506
Barrels, 400 lbs	16,994	14,206	11,361	8,279	5,595	4,527
Concentrate	803	904	838	683	660	472
Total	42,537	38,013	32,125	25,620	20,407	19,486
Strawberries ¹						
IQF and Poly	132,834	125,074	117,826	106,435	117,558	221,167
Pails and Tubs	52,259	46,557	41,076	67,578	91,456	158,409
Barrels and Drums	28,878	25,047	22,121	21,626	32,023	33,775
Juice Stock	5,963	6,939	7,878	18,450	28,724	23,971
Total	219,934	203,617	188,901	214,089	269,761	437,322
	Jul	Aug	Sep	Oct	Nov	Dec
	<i>1,000 Pounds</i>	<i>1,000 Pounds</i>	<i>1,000 Pounds</i>	<i>1,000 Pounds</i>	<i>1,000 Pounds</i>	<i>1,000 Pounds</i>
Blackberries						
IQF	22,330	22,193	20,044	19,875	18,733	16,829
Pails and Tubs	1,916	2,044	1,921	1,835	1,933	1,781
Barrels, 400 lbs	7,181	7,476	7,639	6,240	3,919	3,468
Concentrate	411	422	801	790	1,496	1,317
Total	31,838	32,135	30,405	28,740	26,081	23,395
Red Raspberries						
IQF	31,256	30,433	27,873	25,318	21,513	19,038
Pails and Tubs	15,296	14,067	13,548	12,249	11,070	9,931
Barrels, 400 lbs	29,013	24,236	18,097	15,525	13,002	10,802
Concentrate	435	1,119	1,226	1,583	1,399	1,116
Total	76,000	69,855	60,744	54,675	46,984	40,887
Strawberries ¹						
IQF and Poly	228,010	206,066	180,857	159,937	134,089	111,531
Pails and Tubs	154,526	140,062	129,739	115,292	102,435	91,594
Barrels and Drums	64,989	59,522	53,290	47,450	40,004	35,494
Juice Stock	24,806	20,478	17,781	15,636	10,762	8,554
Total	472,331	426,128	381,667	338,315	287,290	247,173

¹ Data by type of pack discontinued after March 2001.

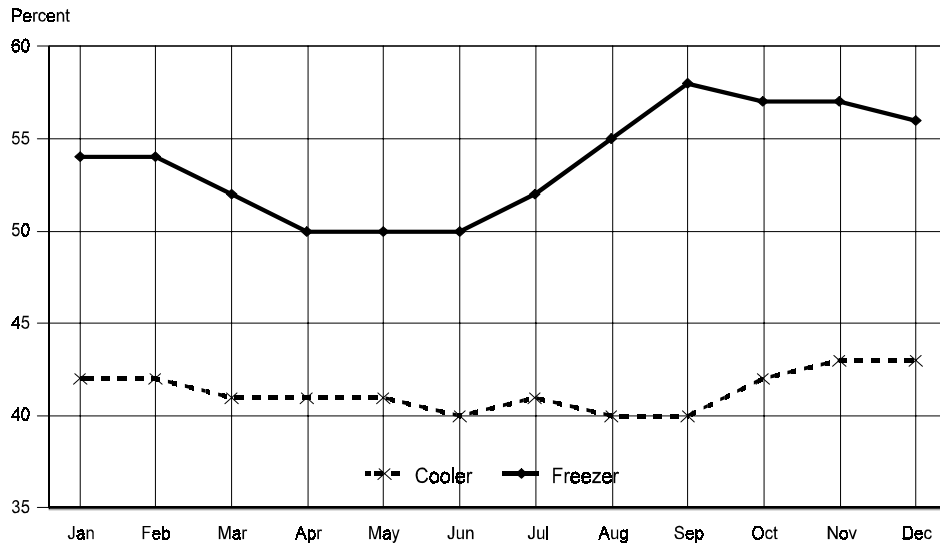
Cooler Space Occupied in Public General Warehouses: Percent of Total Usable Space by Region and United States, Monthly, 2003

Region	Month											
	Jan	Feb	Mar	Apr	May	Jun	Jul	Aug	Sep	Oct	Nov	Dec
	<i>Percent</i>	<i>Percent</i>	<i>Percent</i>	<i>Percent</i>	<i>Percent</i>	<i>Percent</i>	<i>Percent</i>	<i>Percent</i>	<i>Percent</i>	<i>Percent</i>	<i>Percent</i>	<i>Percent</i>
N England	73	68	62	60	65	64	70	69	70	72	80	82
Middle Atlantic	61	56	53	52	52	51	51	53	53	58	61	59
East N. Central	51	51	50	50	50	49	52	50	47	55	54	53
West N. Central	40	40	39	38	42	43	45	43	42	40	39	37
South Atlantic	32	31	30	30	30	29	28	27	27	27	26	25
East S. Central	49	45	43	40	44	48	49	48	45	45	45	44
West S. Central	28	31	30	30	27	27	25	24	23	23	23	22
Mountain Pacific	38	38	43	45	45	43	40	39	38	40	40	39
Pacific	35	38	38	39	39	37	35	34	38	38	43	42
US	42	42	41	41	41	40	41	40	40	42	43	43

Freezer Space Occupied in Public General Warehouses: Percent of Total Usable Space by Region and United States, Monthly, 2003

Region	Month											
	Jan	Feb	Mar	Apr	May	Jun	Jul	Aug	Sep	Oct	Nov	Dec
	<i>Percent</i>	<i>Percent</i>	<i>Percent</i>	<i>Percent</i>	<i>Percent</i>	<i>Percent</i>	<i>Percent</i>	<i>Percent</i>	<i>Percent</i>	<i>Percent</i>	<i>Percent</i>	<i>Percent</i>
N England	65	63	59	57	60	65	70	71	75	80	81	81
Middle Atlantic	52	53	52	52	52	51	52	54	52	56	55	54
East N. Central	52	51	48	45	45	44	45	44	55	55	55	54
West N. Central	57	59	59	56	55	54	53	52	53	52	51	51
South Atlantic	54	53	51	49	49	48	50	47	57	50	50	49
East S. Central	40	40	37	39	38	37	39	35	45	42	42	41
West S. Central	51	51	50	48	48	47	48	49	55	40	43	43
Mountain Pacific	55	54	51	52	52	57	57	55	60	65	64	60
Pacific	59	58	55	52	52	55	60	61	70	71	72	68
US	54	54	52	50	50	50	52	54	58	57	57	56

Cooler and Freezer Space Occupied in Public General Warehouses,
Percent of Total Space, Year 2003, United States



Methodology and Definitions

Data in this report are end-of-month regional and US totals of various food commodities stored in cold storage warehouses. Some figures have been revised from those published in the monthly "**Cold Storage**" report, primarily due to late reports or reporting and tabulation errors. Occasionally, new firms or established firms who have not been responding to our request for information, begin to report. This may cause a shift in the data which is due to the change in the number of plants reporting rather than an actual change in the level of stocks reported.

Data are collected monthly from warehouses artificially cooled to a temperature of 50 degrees Fahrenheit or lower, and whose food products are normally stored for 30 days or more. All food items in these facilities are reported regardless of the number of days stored at the time of the report. Also included are specialized storage facilities meeting the 30 day requirement, such as fruit houses, dairy manufacturing plants, frozen fruit, fruit juice, and vegetable processors, and poultry and meat packing plants. Excluded are stocks in space maintained by wholesalers, jobbers, distributors, chain stores, locker plants containing individual lockers, meat packer branch houses, and frozen food processors whose entire inventories are turned over more than once a month.

Government owned stocks are food products held by the Commodity Credit Corporation, Armed Forces, and other government agencies, including State and local governments. Food held in refrigerated space owned, leased, or operated by the Armed Services is not reported.

Geographic Regions: The regions and States covered in this summary are as follows:

New England:	Maine, New Hampshire, Vermont, Massachusetts, Rhode Island, and Connecticut.
Middle Atlantic:	New York, New Jersey, and Pennsylvania.
East North Central:	Ohio, Indiana, Illinois, Michigan, and Wisconsin.
West North Central:	Minnesota, Iowa, Missouri, North Dakota, South Dakota, Nebraska, and Kansas.
South Atlantic:	Delaware, Maryland, District of Columbia, Virginia, West Virginia, North Carolina, South Carolina, Georgia, and Florida.
East South Central:	Kentucky, Tennessee, Alabama, and Mississippi.
West South Central:	Arkansas, Louisiana, Oklahoma, and Texas.
Mountain:	Montana, Idaho, Wyoming, Colorado, New Mexico, Arizona, Utah, and Nevada.
Pacific:	Washington, Oregon, and California.

Released February 20, 2004, by the National Agricultural Statistics Service (NASS), Agricultural Statistics Board, U.S. Department of Agriculture. For information on "*Cold Storage 2003 Summary*" call Perry Game at (202) 720-8784, office hours 7:00 a.m. to 4:30 p.m. ET.

The next "*Cold Storage 2004 Summary*" report will be released in February 2005.

The United States Department of Agriculture (USDA) prohibits discrimination in all its programs on the basis of race, color, national origin, gender, religion, age, disability, political beliefs, sexual orientation, and marital or family status. (Not all prohibited bases apply to all programs.) Persons with disabilities who require alternative means for communication of program information (braille, large print, audiotape, etc.) should contact the USDA's TARGET Center at 202-720-2600 (voice and TDD).

To file a complaint of discrimination, write USDA, Director, Office of Civil Rights, Room 326-W, Whitten Building, 1400 Independence Avenue, SW, Washington, D.C., 20250-9410, or call 202-720-5964 (voice or TDD). USDA is an equal opportunity provider and employer.

ACCESS TO REPORTS!!

For your convenience, there are several ways to obtain NASS reports, data products, and services:

INTERNET ACCESS

All NASS reports are available free of charge on the worldwide Internet. For access, connect to the Internet and go to the NASS Home Page at: www.usda.gov/nass/. Select "Today's Reports" or Publications and then Reports Calendar or Publications and then Search, by Title or Subject.

E-MAIL SUBSCRIPTION

All NASS reports are available by subscription free of charge direct to your e-mail address. Starting with the NASS Home Page at www.usda.gov/nass/, click on **Publications**, then click on the **Subscribe by E-mail** button which takes you to the page describing e-mail delivery of reports. Finally, click on **Go to the Subscription Page** and follow the instructions.

PRINTED REPORTS OR DATA PRODUCTS

CALL OUR TOLL-FREE ORDER DESK: 800-999-6779 (U.S. and Canada)
Other areas, please call 703-605-6220 FAX: 703-605-6900
(Visa, MasterCard, check, or money order acceptable for payment.)

ASSISTANCE

For **assistance** with general agricultural statistics or further information about NASS or its products or services, contact the **Agricultural Statistics Hotline** at **800-727-9540**, 7:30 a.m. to 4:00 p.m. ET, or e-mail: nass@nass.usda.gov.
