



United States  
Department of  
Agriculture

# Cold Storage

National  
Agricultural  
Statistics  
Service

## 2006 Summary



## February 2007

Co St 1 (07)

# USDA





## Contents

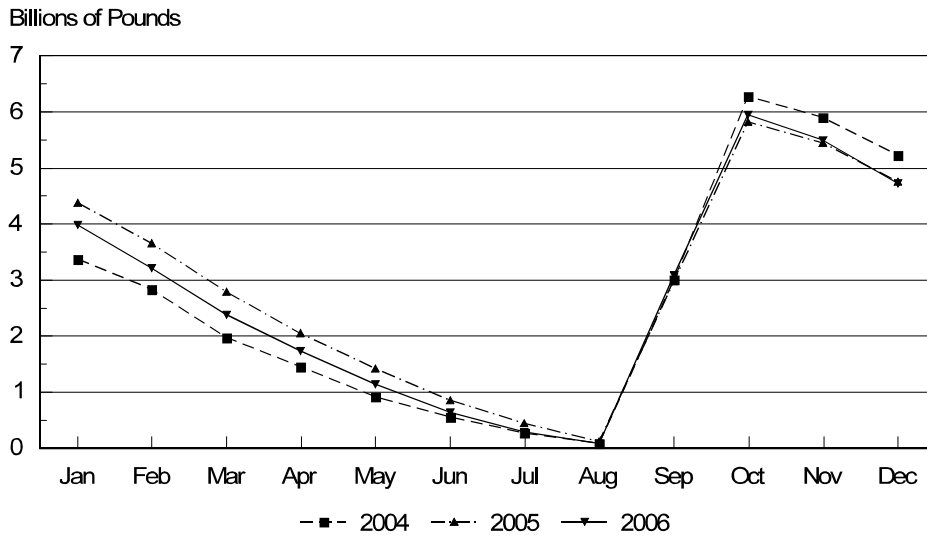
## Page

Fresh Apples and Pears: Stocks in Cold Storage, United States, Monthly, 2006 .....	2
Fresh Apples, Total: Stocks in Cold Storage by Region, Monthly, 2006 .....	3
Fresh Apples, Total: Stocks in Cold Storage by State, Monthly, 2006 .....	3
Nuts: Stocks in Cold Storage by Region and United States, Monthly, 2006 .....	4
Dairy Products: Stocks in Cold Storage by Region and United States, Monthly, 2006 .....	8
Frozen Eggs: Stocks in Cold Storage, United States, Monthly, 2006 .....	13
Poultry: Stocks in Cold Storage by Region and United States, Monthly, 2006 .....	14
Frozen Fruit: Stocks in Cold Storage by Region and United States, Monthly, 2006 .....	24
Frozen Juice Concentrate: Stocks in Cold Storage by Region and United States, Monthly, 2006 .....	32
Frozen Vegetables: Stocks in Cold Storage by Region and United States, Monthly, 2006 .....	34
Potatoes: Stocks in Cold Storage by Region and United States, Monthly, 2006 .....	48
Beef: Stocks in Cold Storage by Region and United States, Monthly, 2006 .....	50
Pork: Stocks in Cold Storage by Region and United States, Monthly, 2006 .....	52
Pork Bellies: Revisions for United States, Monthly, 2005 .....	53
Other Meat: Stocks in Cold Storage by Region and United States, Monthly, 2006 .....	58
Canned and Total Meat: Stocks in Cold Storage by Region and United States, Monthly, 2006 .....	60
Miscellaneous Cooler and Freezer: Stocks in Cold Storage, United States, Monthly, 2006 .....	62
Total Commodities Stored: Stocks in Cold Storage, United States, Monthly, 2006 .....	62
Stocks in Cold Storage: Blackberries, Red Raspberries, and Strawberries by Type of Pack, United States, Monthly, 2006 .....	63
Methodology and Definitions .....	64
Information Contacts .....	64

**Fresh Apples and Pears: Stocks in Cold Storage by Month, 2006**

Commodity	Month					
	Jan	Feb	Mar	Apr	May	Jun
	<i>1,000 Pounds</i>	<i>1,000 Pounds</i>	<i>1,000 Pounds</i>	<i>1,000 Pounds</i>	<i>1,000 Pounds</i>	<i>1,000 Pounds</i>
Fresh Apples						
Regular Storage	448,192	291,084	177,513	107,210	63,647	30,281
Controlled Atmosphere	3,542,643	2,932,011	2,204,905	1,638,330	1,069,899	602,065
Total	3,990,835	3,223,095	2,382,418	1,745,540	1,133,546	632,346
Fresh Pears						
Bartlett	1,066	1,966	1,120	975	121	
Other	232,987	186,594	131,062	91,889	41,343	14,615
Total	234,053	188,560	132,182	92,864	41,464	14,615
	Jul	Aug	Sep	Oct	Nov	Dec
	<i>1,000 Pounds</i>	<i>1,000 Pounds</i>	<i>1,000 Pounds</i>	<i>1,000 Pounds</i>	<i>1,000 Pounds</i>	<i>1,000 Pounds</i>
Fresh Apples						
Regular Storage	5,944	19,583	1,043,557	1,693,503	1,103,085	752,485
Controlled Atmosphere	280,499	63,942	2,045,622	4,256,524	4,396,020	3,979,796
Total	286,443	83,525	3,089,179	5,950,027	5,499,105	4,732,281
Fresh Pears						
Bartlett	104	80,307	93,135	41,986	27,052	7,029
Other	1,807	1,328	298,409	364,681	313,637	241,337
Total	1,911	81,635	391,544	406,667	340,689	248,366

Fresh Apples  
Cold Storage Stocks, 2004 - 2006  
United States



**Fresh Apples, Total: Stocks in Cold Storage by Month and Region, 2006**

Region	Month					
	Jan	Feb	Mar	Apr	May	Jun
	<i>1,000 Pounds</i>	<i>1,000 Pounds</i>	<i>1,000 Pounds</i>	<i>1,000 Pounds</i>	<i>1,000 Pounds</i>	<i>1,000 Pounds</i>
New England	13,355	11,312	4,139	995	422	78
Middle Atlantic	408,920	324,263	251,694	170,652	106,050	65,730
East North Central	229,271	165,765	108,532	69,257	38,820	
West North Central	483	248	17	7		
South Atlantic	167,037	148,704	110,430	82,253	56,076	35,669
East South Central	98	50	17			
West South Central	8,820	7,560	6,300	3,360	2,520	1,260
Mountain	26,277	14,621	7,896	6,079	2,982	2,127
Pacific	3,136,574	2,550,572	1,893,393	1,412,937	926,676	527,482
	Jul	Aug	Sep	Oct	Nov	Dec
	<i>1,000 Pounds</i>	<i>1,000 Pounds</i>	<i>1,000 Pounds</i>	<i>1,000 Pounds</i>	<i>1,000 Pounds</i>	<i>1,000 Pounds</i>
New England				29,404	23,197	17,555
Middle Atlantic	36,792	21,599	280,920	619,104	576,820	504,857
East North Central		14	20,677	422,313	390,376	344,362
West North Central				5,473	1,674	602
South Atlantic	8	8	7	285,531	277,029	231,247
East South Central				161		13
West South Central						
Mountain	8	8	84	53,925	29,321	17,158
Pacific	249,635	61,896	2,787,491	4,534,116	4,200,688	3,616,487

**Fresh Apples, Total: Stocks in Cold Storage by Month and State, 2006**

State	Month					
	Jan	Feb	Mar	Apr	May <sup>1</sup>	Jun <sup>1</sup>
	<i>1,000 Pounds</i>	<i>1,000 Pounds</i>	<i>1,000 Pounds</i>	<i>1,000 Pounds</i>	<i>1,000 Pounds</i>	<i>1,000 Pounds</i>
California	29,370	20,978	8,564	434		
Michigan	216,048	158,504	105,340	68,511		
New England	13,355	11,312	4,139	995		
New York	201,516	155,316	118,146	77,112		
Ohio	10,160	5,355	2,460	410		
Oregon	23,732	37,063	15,409	11,173		
Pennsylvania	207,312	168,714	133,434	93,540		
Virginia	94,022	87,185	64,446	44,616		
Washington	3,083,472	2,492,532	1,869,420	1,401,330		
West Virginia	51,454	44,654	32,992	27,322		
Other States	60,394	41,482	28,068	20,097		
	Jul <sup>1</sup>	Aug <sup>1</sup>	Sep <sup>1</sup>	Oct	Nov	Dec
	<i>1,000 Pounds</i>	<i>1,000 Pounds</i>	<i>1,000 Pounds</i>	<i>1,000 Pounds</i>	<i>1,000 Pounds</i>	<i>1,000 Pounds</i>
California				79,290	68,600	49,584
Michigan				383,675	362,253	323,942
New England				29,404	23,197	17,555
New York				362,376	317,100	276,024
Ohio				22,920	17,525	13,225
Oregon				54,826	47,588	40,709
Pennsylvania				256,326	259,560	228,732
Virginia				146,836	141,456	124,633
Washington				4,400,000	4,084,500	3,526,194
West Virginia				65,646	69,549	58,669
Other States				148,728	107,777	73,014

<sup>1</sup> State totals not shown to avoid disclosure of individual operations.

**Nuts: Stocks in Cold Storage by Region, and  
United States, Monthly, 2006**

Commodity and Month	Region				
	New England	Middle Atlantic	East North Central	West North Central	South Atlantic
	<i>1,000 Pounds</i>	<i>1,000 Pounds</i>	<i>1,000 Pounds</i>	<i>1,000 Pounds</i>	<i>1,000 Pounds</i>
Shelled Peanuts					
Jan		10	1,960	15	188,415
Feb			2,024	18	209,243
Mar			2,268	20	243,703
Apr		176	34	22	262,730
May		250	26	20	239,510
Jun		248	23	18	220,674
Jul		241	71	17	198,893
Aug		187	71	9	202,582
Sep		244	64	10	222,405
Oct		172	78	10	224,593
Nov		161	59	9	217,326
Dec		64	59	11	205,669
Pecans <sup>1</sup>					
Jan	25	74			6,742
Feb	112	102			7,456
Mar	19	142			8,737
Apr	20	159			9,435
May	22	212			9,797
Jun	22	196			9,419
Jul	18	186			8,976
Aug	18	170			8,224
Sep	15	145			7,462
Oct	14	114			7,301
Nov	11	92			6,876
Dec	11	89			7,145
Other Shelled					
Jan					
Feb					
Mar					
Apr					
May					
Jun					
Jul					
Aug					
Sep					
Oct					
Nov					
Dec					
Total Shelled Nuts					
Jan					
Feb					
Mar					
Apr					
May					
Jun					
Jul					
Aug					
Sep					
Oct					
Nov					
Dec					

See footnote(s) at end of table.

--continued

**Nuts: Stocks in Cold Storage by Region, and  
United States, Monthly, 2006 (continued)**

Commodity and Month	Region				
	East South Central	West South Central	Mountain	Pacific	US Total
	<i>1,000 Pounds</i>	<i>1,000 Pounds</i>	<i>1,000 Pounds</i>	<i>1,000 Pounds</i>	<i>1,000 Pounds</i>
Shelled					
Peanuts					
Jan	30,108	68,124	54	133	288,819
Feb	31,312	76,310	58	157	319,122
Mar	27,052	81,035	47	176	354,301
Apr	23,622	86,060	59	190	372,893
May	17,064	91,115	58	177	348,220
Jun	14,300	81,154	62	158	316,637
Jul	14,797	88,085	62	150	302,316
Aug	23,567	95,024	82	159	321,681
Sep	21,975	93,408	80	178	338,364
Oct	23,954	93,084	75	180	342,146
Nov	25,622	88,456	74	175	331,882
Dec	27,685	89,099	72		322,659
Pecans <sup>1</sup>					
Jan	682	15,858		108	23,489
Feb	937	20,079		116	28,802
Mar	1,240	24,798		134	35,070
Apr	1,391	26,389		151	37,545
May	1,379	30,323		179	41,912
Jun	1,267	31,839		144	42,887
Jul	1,167	32,788		167	43,302
Aug	1,071	33,348		94	42,925
Sep	846	26,378		91	34,937
Oct	680	26,106		91	34,306
Nov	623	19,933		127	27,662
Dec	585	19,891		91	27,812
Other Shelled					
Jan					96,033
Feb					100,181
Mar					98,774
Apr					109,744
May					121,753
Jun					113,521
Jul					100,663
Aug					81,121
Sep					86,436
Oct					88,410
Nov					88,865
Dec					91,895
Total Shelled					
Nuts					
Jan					408,341
Feb					448,105
Mar					488,145
Apr					520,182
May					511,885
Jun					473,045
Jul					446,281
Aug					445,727
Sep					459,737
Oct					464,862
Nov					448,409
Dec					442,366

See footnote(s) at end of table.

--continued

**Nuts: Stocks in Cold Storage by Region, and  
United States, Monthly, 2006**

Commodity and Month	Region				
	New England	Middle Atlantic	East North Central	West North Central	South Atlantic
	<i>1,000 Pounds</i>	<i>1,000 Pounds</i>	<i>1,000 Pounds</i>	<i>1,000 Pounds</i>	<i>1,000 Pounds</i>
In-Shell					
Peanuts					
Jan					
Feb					
Mar					
Apr					
May					
Jun					
Jul					
Aug					
Sep					
Oct					
Nov					
Dec					
Pecans <sup>1</sup>					
Jan					27,885
Feb					27,375
Mar					23,057
Apr					21,049
May					17,989
Jun					16,468
Jul					14,591
Aug					9,912
Sep					8,266
Oct					5,194
Nov					8,913
Dec					12,016
Other In-Shell					
Jan					
Feb					
Mar					
Apr					
May					
Jun					
Jul					
Aug					
Sep					
Oct					
Nov					
Dec					
Total In-Shell					
Nuts					
Jan					
Feb					
Mar					
Apr					
May					
Jun					
Jul					
Aug					
Sep					
Oct					
Nov					
Dec					



**Nuts: Stocks in Cold Storage by Region, and  
United States, Monthly, 2006 (continued)**

Commodity and Month	Region				
	East South Central	West South Central	Mountain	Pacific	US Total
	<i>1,000 Pounds</i>	<i>1,000 Pounds</i>	<i>1,000 Pounds</i>	<i>1,000 Pounds</i>	<i>1,000 Pounds</i>
In-Shell					
Peanuts					
Jan					17,904
Feb					20,868
Mar					19,300
Apr					17,288
May					18,007
Jun					27,374
Jul					18,613
Aug					15,617
Sep					17,188
Oct					15,658
Nov					17,412
Dec					17,023
Pecans <sup>1</sup>					
Jan	4,088	167,638			199,611
Feb	3,039	177,202			207,616
Mar	2,416	158,636			184,109
Apr	2,139	141,239			164,427
May	2,017	120,832			140,838
Jun	1,519	107,809			125,796
Jul	1,516	82,707			98,814
Aug	1,765	58,621			70,298
Sep	778	46,214			55,258
Oct	305	30,910			36,409
Nov	1,053	32,813			42,779
Dec	2,822	76,756			91,594
Other In-Shell					
Jan					8,307
Feb					7,933
Mar					7,716
Apr					7,675
May					7,829
Jun					9,001
Jul					8,357
Aug					7,832
Sep					6,779
Oct					7,462
Nov					6,948
Dec					6,041
Total In-Shell					
Nuts					
Jan					225,822
Feb					236,417
Mar					211,125
Apr					189,390
May					166,674
Jun					162,171
Jul					125,784
Aug					93,747
Sep					79,225
Oct					59,529
Nov					67,139
Dec					114,658

<sup>1</sup> East North Central combined with South Atlantic. Mountain and West North Central combined with West South Central.

**Dairy Products: Stocks in Cold Storage by Region, and  
United States, 2006**

Commodity and Month	Region				
	New England	Middle Atlantic	East North Central	West North Central	South Atlantic
	<i>1,000 Pounds</i>	<i>1,000 Pounds</i>	<i>1,000 Pounds</i>	<i>1,000 Pounds</i>	<i>1,000 Pounds</i>
Butter (Total)					
Jan					
Feb					
Mar					
Apr					
May					
Jun					
Jul					
Aug					
Sep					
Oct					
Nov					
Dec					
Butter (Govt Owned)					
Jan					
Feb					
Mar					
Apr					
May					
Jun					
Jul					
Aug					
Sep					
Oct					
Nov					
Dec					

--continued

**Dairy Products: Stocks in Cold Storage by Region, and  
United States, 2006 (continued)**

Commodity and Month	Region				
	East South Central	West South Central	Mountain	Pacific	US Total
	<i>1,000 Pounds</i>	<i>1,000 Pounds</i>	<i>1,000 Pounds</i>	<i>1,000 Pounds</i>	<i>1,000 Pounds</i>
Butter (Total)					
Jan					125,347
Feb					169,136
Mar					195,330
Apr					227,731
May					261,529
Jun					262,970
Jul					259,832
Aug					215,198
Sep					190,550
Oct					157,571
Nov					108,113
Dec					108,605
Butter (Govt Owned)					
Jan					241
Feb					156
Mar					135
Apr					106
May					179
Jun					113
Jul					97
Aug					94
Sep					114
Oct					207
Nov					80
Dec					60

--continued

**Dairy Products: Stocks in Cold Storage by Region, and  
United States, 2006**

Commodity and Month	Region				
	New England	Middle Atlantic	East North Central	West North Central	South Atlantic
	<i>1,000 Pounds</i>	<i>1,000 Pounds</i>	<i>1,000 Pounds</i>	<i>1,000 Pounds</i>	<i>1,000 Pounds</i>
Natural Cheese					
American (Total)					
Jan	36,059	50,929	198,381	123,412	3,988
Feb	36,594	50,405	200,117	129,171	3,368
Mar	36,925	54,942	204,228	134,738	4,154
Apr	37,734	55,714	211,056	134,273	4,458
May	36,524	54,045	222,941	133,902	4,219
Jun	36,096	53,091	229,104	128,598	4,482
Jul	37,316	55,982	232,439	121,343	5,633
Aug	36,992	52,754	230,044	119,257	5,172
Sep	36,744	53,008	225,355	117,708	4,129
Oct	35,977	48,673	216,727	115,552	4,333
Nov	36,268	47,372	215,623	114,242	2,581
Dec	36,711	49,891	221,585	116,365	921
American (Govt Owned)					
Jan					
Feb					
Mar					
Apr					
May					
Jun					
Jul					
Aug					
Sep					
Oct					
Nov					
Dec					
Swiss					
Jan					
Feb					
Mar					
Apr					
May					
Jun					
Jul					
Aug					
Sep					
Oct					
Nov					
Dec					
Other Natural Cheese					
Jan	33	12,771	117,072	48,693	103
Feb	33	12,606	120,621	48,506	106
Mar	34	12,809	124,616	54,402	120
Apr	35	13,032	133,245	55,182	110
May	37	13,910	137,800	57,484	102
Jun	338	14,954	141,673	60,292	134
Jul	42	20,719	157,858	62,646	177
Aug	39	18,294	151,934	61,589	117
Sep	41	15,647	155,783	59,495	142
Oct	40	14,388	154,939	59,799	64
Nov	168	14,215	147,018	57,079	62
Dec	82	14,106	162,337	59,268	48

--continued

**Dairy Products: Stocks in Cold Storage by Region, and  
United States, 2006 (continued)**

Commodity and Month	Region				
	East South Central	West South Central	Mountain	Pacific	US Total
	<i>1,000 Pounds</i>	<i>1,000 Pounds</i>	<i>1,000 Pounds</i>	<i>1,000 Pounds</i>	<i>1,000 Pounds</i>
Natural Cheese					
American (Total)					
Jan	316	1,601	35,321	91,932	541,939
Feb	366	2,659	37,376	93,722	553,778
Mar	407	3,217	36,631	94,235	569,477
Apr	403	3,585	36,612	96,535	580,370
May	514	4,531	49,807	94,910	601,393
Jun	364	5,617	48,806	97,504	603,662
Jul	272	5,367	49,872	93,555	601,779
Aug	227	4,306	40,958	90,891	580,601
Sep	265	4,500	41,780	79,438	562,927
Oct	373	3,250	33,694	75,314	533,893
Nov	265	2,060	30,615	70,645	519,671
Dec	246	1,391	33,400	73,698	534,208
American (Govt Owned)					
Jan					269
Feb					273
Mar					279
Apr					235
May					42
Jun					21
Jul					100
Aug					272
Sep					250
Oct					360
Nov					454
Dec					219
Swiss					
Jan					27,938
Feb					29,102
Mar					30,159
Apr					32,615
May					33,039
Jun					35,520
Jul					34,257
Aug					29,920
Sep					29,567
Oct					29,352
Nov					28,977
Dec					29,096
Other Natural Cheese					
Jan	2,437	548	551	12,937	195,145
Feb	2,499	320	768	14,439	199,898
Mar	2,538	951	769	14,799	211,038
Apr	2,611	1,003	606	14,009	219,833
May	2,777	1,093	391	15,247	228,841
Jun	2,886	1,033	295	15,182	236,787
Jul	3,173	825	3,998	13,443	262,881
Aug	2,981	685	4,268	11,894	251,801
Sep	2,988	1,007	4,014	11,524	250,641
Oct	2,971	701	3,523	10,513	246,938
Nov	2,822	750	5,133	8,916	236,163
Dec	2,900	632	5,319	9,441	254,133

--continued

**Dairy Products: Stocks in Cold Storage by Region, and  
United States, 2006**

Commodity and Month	Region				
	New England	Middle Atlantic	East North Central	West North Central	South Atlantic
Total Natural Cheese	<i>1,000 Pounds</i>	<i>1,000 Pounds</i>	<i>1,000 Pounds</i>	<i>1,000 Pounds</i>	<i>1,000 Pounds</i>
Jan					
Feb					
Mar					
Apr					
May					
Jun					
Jul					
Aug					
Sep					
Oct					
Nov					
Dec					

**Dairy Products: Stocks in Cold Storage by Region, and  
United States, 2006 (continued)**

Commodity and Month	Region				
	East South Central	West South Central	Mountain	Pacific	US Total
	<i>1,000 Pounds</i>	<i>1,000 Pounds</i>	<i>1,000 Pounds</i>	<i>1,000 Pounds</i>	<i>1,000 Pounds</i>
Total Natural Cheese					
Jan					765,022
Feb					782,778
Mar					810,674
Apr					832,818
May					863,273
Jun					875,969
Jul					898,917
Aug					862,322
Sep					843,135
Oct					810,183
Nov					784,811
Dec					817,437

**Frozen Eggs: Stocks in Cold Storage, by Month, United States, 2006**

Commodity/Product	Month					
	Jan	Feb	Mar	Apr	May	Jun
	<i>1,000 Pounds</i>	<i>1,000 Pounds</i>	<i>1,000 Pounds</i>	<i>1,000 Pounds</i>	<i>1,000 Pounds</i>	<i>1,000 Pounds</i>
Frozen Eggs						
Whites	2,839	3,024	3,002	3,225	2,477	2,963
Yolks	1,524	1,569	1,451	1,429	1,299	1,146
Whole & Mixed	14,361	16,516	13,293	15,221	13,644	13,892
Unclassified	3,728	3,359	3,011	3,384	3,593	4,062
Total	22,452	24,468	20,757	23,259	21,013	22,063
	<i>1,000 Pounds</i>	<i>1,000 Pounds</i>	<i>1,000 Pounds</i>	<i>1,000 Pounds</i>	<i>1,000 Pounds</i>	<i>1,000 Pounds</i>
Frozen Eggs						
Whites	2,953	2,537	2,617	2,477	2,530	2,545
Yolks	1,274	1,366	1,305	1,195	1,507	1,588
Whole & Mixed	14,981	13,609	11,826	8,983	6,505	6,470
Unclassified	4,388	4,048	3,290	3,607	6,515	5,875
Total	23,596	21,560	19,038	16,262	17,057	16,478

**Poultry: Stocks in Cold Storage By Region, and by Month,  
United States, 2006**

Commodity and Month	Region				
	New England	Middle Atlantic	East North Central	West North Central	South Atlantic
	<i>1,000 Pounds</i>	<i>1,000 Pounds</i>	<i>1,000 Pounds</i>	<i>1,000 Pounds</i>	<i>1,000 Pounds</i>
Chickens					
Broilers, Fryers & Roasters (Whole Birds)					
Jan		3,022	250	1,074	6,298
Feb		2,122	310	1,037	5,891
Mar		2,069	442	1,840	5,312
Apr		2,107	471	2,263	6,684
May		1,598	316	2,567	6,052
Jun		1,632	312	1,624	6,529
Jul		1,512	318	1,318	6,114
Aug		690	267	1,082	5,632
Sep		694	295	1,028	5,380
Oct		818	263	950	5,769
Nov		986	271	834	7,293
Dec		1,160	191	1,200	7,853
Hens (Whole Birds)					
Jan	5	1,116	273	97	389
Feb	4	586	63	130	308
Mar	4	597	75	124	3,324
Apr	4	608	44	154	5,150
May	4	590	28	141	4,209
Jun	4	506	64	186	5,251
Jul	4	558	77	456	7,351
Aug	5	404	84	565	9,485
Sep	5	452	142	630	8,179
Oct	5	470	202	801	5,879
Nov	3	414	108	523	4,970
Dec	2	345	56	142	4,195
Breast & Breast Meat <sup>1</sup>					
Jan					
Feb					
Mar					
Apr					
May					
Jun					
Jul					
Aug					
Sep					
Oct					
Nov					
Dec					
Drumsticks <sup>1</sup>					
Jan					
Feb					
Mar					
Apr					
May					
Jun					
Jul					
Aug					
Sep					
Oct					
Nov					
Dec					

See footnote(s) at end of table.

--continued



**Poultry: Stocks in Cold Storage by Region, and by Month,  
United States, 2006 (continued)**

Commodity and Month	Region				
	East South Central	West South Central	Mountain	Pacific	US Total
	<i>1,000 Pounds</i>	<i>1,000 Pounds</i>	<i>1,000 Pounds</i>	<i>1,000 Pounds</i>	<i>1,000 Pounds</i>
Chickens					
Broilers, Fryers & Roasters (Whole Birds)					
Jan	4,490	5,989	1,238	2,055	24,416
Feb	3,665	6,073	1,157	1,932	22,187
Mar	3,896	6,273	1,384	2,384	23,600
Apr	4,137	7,758	1,447	3,107	27,974
May	3,070	7,248	1,424	2,930	25,205
Jun	2,950	5,807	1,182	2,906	22,942
Jul	2,705	5,283	240	2,602	20,092
Aug	2,622	5,382	208	2,173	18,056
Sep	2,521	4,090	170	2,247	16,425
Oct	2,586	3,351	256	1,979	15,972
Nov	3,586	3,827	140	2,404	19,341
Dec	4,364	4,480	95	2,633	21,976
Hens (Whole Birds)					
Jan	1	425	4	79	2,389
Feb	1	472	14	164	1,742
Mar	1	882	6	110	5,123
Apr	1	897	9	107	6,974
May	1	1,232	16	140	6,361
Jun	451	1,271	6	141	7,880
Jul	451	1,460	12	141	10,510
Aug	450	1,561	3	144	12,701
Sep	452	1,177	2	170	11,209
Oct	426	983	1	1,496	10,263
Nov	150	467	2	133	6,770
Dec	109	348	11	86	5,294
Breast & Breast Meat <sup>1</sup>					
Jan					158,222
Feb					149,647
Mar					145,069
Apr					133,942
May					127,544
Jun					134,384
Jul					133,495
Aug					131,086
Sep					122,502
Oct					129,609
Nov					138,670
Dec					147,196
Drumsticks <sup>1</sup>					
Jan					23,500
Feb					19,976
Mar					18,048
Apr					14,726
May					17,404
Jun					22,743
Jul					15,627
Aug					23,914
Sep					14,778
Oct					18,145
Nov					15,505
Dec					15,970

See footnote(s) at end of table.

--continued

**Poultry: Stocks in Cold Storage By Region, and by Month,  
United States, 2006**

Commodity and Month	Region				
	New England	Middle Atlantic	East North Central	West North Central	South Atlantic
	<i>1,000 Pounds</i>	<i>1,000 Pounds</i>	<i>1,000 Pounds</i>	<i>1,000 Pounds</i>	<i>1,000 Pounds</i>
Leg Quarters <sup>1</sup>					
Jan					
Feb					
Mar					
Apr					
May					
Jun					
Jul					
Aug					
Sep					
Oct					
Nov					
Dec					
Legs <sup>1</sup>					
Jan					
Feb					
Mar					
Apr					
May					
Jun					
Jul					
Aug					
Sep					
Oct					
Nov					
Dec					
Thigh & Thigh Quarters <sup>1</sup>					
Jan					
Feb					
Mar					
Apr					
May					
Jun					
Jul					
Aug					
Sep					
Oct					
Nov					
Dec					
Thigh Meat <sup>1</sup>					
Jan					
Feb					
Mar					
Apr					
May					
Jun					
Jul					
Aug					
Sep					
Oct					
Nov					
Dec					

See footnote(s) at end of table.

--continued

**Poultry: Stocks in Cold Storage by Region. and  
United States, 2006 (continued)**

Commodity and Month	Region				
	East South Central	West South Central	Mountain	Pacific	US Total
	<i>1,000 Pounds</i>	<i>1,000 Pounds</i>	<i>1,000 Pounds</i>	<i>1,000 Pounds</i>	<i>1,000 Pounds</i>
Leg Quarters <sup>1</sup>					
Jan					171,245
Feb					142,375
Mar					144,300
Apr					111,311
May					84,840
Jun					85,806
Jul					60,810
Aug					70,790
Sep					86,670
Oct					79,319
Nov					49,732
Dec					74,213
Legs <sup>1</sup>					
Jan					21,963
Feb					20,008
Mar					15,232
Apr					12,486
May					10,615
Jun					10,350
Jul					8,535
Aug					9,731
Sep					9,690
Oct					9,681
Nov					11,832
Dec					10,593
Thigh & Thigh Quarters <sup>1</sup>					
Jan					15,041
Feb					16,720
Mar					16,763
Apr					12,931
May					17,080
Jun					13,166
Jul					10,214
Aug					10,072
Sep					9,862
Oct					10,627
Nov					12,922
Dec					10,059
Thigh Meat <sup>1</sup>					
Jan					16,873
Feb					16,177
Mar					15,230
Apr					15,355
May					15,996
Jun					18,019
Jul					17,342
Aug					15,816
Sep					15,487
Oct					13,974
Nov					16,082
Dec					16,255

See footnote(s) at end of table.

--continued

**Poultry: Stocks in Cold Storage By Region, and by Month,  
United States, 2006**

Commodity and Month	Region				
	New England	Middle Atlantic	East North Central	West North Central	South Atlantic
	<i>1,000 Pounds</i>	<i>1,000 Pounds</i>	<i>1,000 Pounds</i>	<i>1,000 Pounds</i>	<i>1,000 Pounds</i>
Wings <sup>1</sup>					
Jan					
Feb					
Mar					
Apr					
May					
Jun					
Jul					
Aug					
Sep					
Oct					
Nov					
Dec					
Paws & Feet <sup>1</sup>					
Jan					
Feb					
Mar					
Apr					
May					
Jun					
Jul					
Aug					
Sep					
Oct					
Nov					
Dec					
Other Chickens (Parts, Processed, etc.) <sup>1</sup>					
Jan					
Feb					
Mar					
Apr					
May					
Jun					
Jul					
Aug					
Sep					
Oct					
Nov					
Dec					
Total Chicken					
Jan	2,574	36,677	21,428	44,867	355,245
Feb	2,671	35,261	22,144	45,326	373,571
Mar	2,483	34,121	20,240	48,027	342,241
Apr	2,251	34,055	22,395	45,129	329,869
May	2,330	32,642	21,367	41,781	296,143
Jun	2,340	34,296	20,734	42,521	298,228
Jul	2,492	36,592	20,415	41,506	261,294
Aug	2,115	32,581	21,380	38,724	253,513
Sep	1,920	27,668	24,113	34,300	245,865
Oct	1,695	30,415	23,440	36,628	249,197
Nov	1,480	33,067	26,028	33,630	250,178
Dec	1,793	32,617	28,042	32,071	261,172

See footnote(s) at end of table.

--continued

**Poultry: Stocks in Cold Storage by Region and by Month  
United States, 2006 (continued)**

Commodity and Month	Region				
	East South Central	West South Central	Mountain	Pacific	US Total
	<i>1,000 Pounds</i>	<i>1,000 Pounds</i>	<i>1,000 Pounds</i>	<i>1,000 Pounds</i>	<i>1,000 Pounds</i>
Wings <sup>1</sup>					
Jan					31,178
Feb					33,644
Mar					36,476
Apr					39,628
May					39,993
Jun					40,521
Jul					38,355
Aug					37,097
Sep					44,484
Oct					55,473
Nov					48,916
Dec					43,861
Paws & Feet <sup>1</sup>					
Jan					10,715
Feb					11,054
Mar					9,972
Apr					16,437
May					14,111
Jun					12,872
Jul					13,018
Aug					12,702
Sep					13,317
Oct					16,518
Nov					14,911
Dec					12,769
Other Chickens (Parts, Processed, etc.) <sup>1</sup>					
Jan					445,529
Feb					490,188
Mar					439,554
Apr					449,231
May					414,490
Jun					412,589
Jul					399,857
Aug					368,455
Sep					365,857
Oct					363,938
Nov					357,595
Dec					392,185
Total Chicken					
Jan	157,442	249,283	6,336	47,219	921,071
Feb	156,966	232,657	6,023	49,099	923,718
Mar	147,975	222,256	6,171	45,853	869,367
Apr	142,904	211,217	5,634	47,541	840,995
May	128,005	199,750	5,252	46,369	773,639
Jun	127,280	202,793	4,339	48,741	781,272
Jul	123,448	193,115	2,634	46,359	727,855
Aug	115,844	200,383	2,267	43,613	710,420
Sep	113,971	218,901	1,588	41,955	710,281
Oct	130,333	206,510	1,970	43,331	723,519
Nov	114,807	192,706	1,763	38,617	692,276
Dec	141,363	217,099	1,792	34,422	750,371

<sup>1</sup> Data series began in May 2003.

**Poultry: Stocks in Cold Storage by Region, and  
United States, 2006**

Commodity and Month	Region				
	New England	Middle Atlantic	East North Central	West North Central	South Atlantic
	<i>1,000 Pounds</i>	<i>1,000 Pounds</i>	<i>1,000 Pounds</i>	<i>1,000 Pounds</i>	<i>1,000 Pounds</i>
Turkeys					
Toms (Whole Carcasses)					
Jan					
Feb					
Mar					
Apr					
May					
Jun					
Jul					
Aug					
Sep					
Oct					
Nov					
Dec					
Hens (Whole Carcasses)					
Jan					
Feb					
Mar					
Apr					
May					
Jun					
Jul					
Aug					
Sep					
Oct					
Nov					
Dec					
Total Whole Turkeys					
Jan	464	4,450	141	16,818	19,364
Feb	712	6,836	192	29,815	27,696
Mar	995	12,952	505	48,299	20,990
Apr	1,955	15,279	592	51,861	22,796
May	3,053	16,855	6,803	58,528	29,041
Jun	3,691	25,496	7,702	62,411	33,638
Jul	4,132	23,975	11,070	68,424	34,955
Aug	7,537	28,565	14,571	62,896	38,003
Sep	8,151	29,255	13,688	51,410	42,868
Oct	7,469	30,895	10,619	46,610	38,962
Nov	654	8,279	1,063	19,433	14,432
Dec	397	7,573	422	21,158	11,264
All Other (Parts, Processed, etc.)					
Jan	674	2,812	15,422	45,424	60,233
Feb	665	2,897	15,658	48,591	62,130
Mar	639	3,069	16,994	49,953	72,587
Apr	629	3,560	20,099	55,552	88,283
May	674	4,737	17,884	56,104	85,471
Jun	679	4,974	18,473	61,179	99,039
Jul	771	4,857	19,303	59,655	97,879
Aug	835	5,046	18,301	55,051	98,468
Sep	760	4,819	17,025	47,680	86,588
Oct	596	3,521	15,201	45,730	75,282
Nov	274	2,795	14,923	36,700	57,087
Dec	241	2,942	14,383	37,765	58,847

--continued

**Poultry: Stocks in Cold Storage by Region, and  
United States, 2006 (continued)**

Commodity and Month	Region				
	East South Central	West South Central	Mountain	Pacific	US Total
	<i>1,000 Pounds</i>	<i>1,000 Pounds</i>	<i>1,000 Pounds</i>	<i>1,000 Pounds</i>	<i>1,000 Pounds</i>
Turkeys					
Toms (Whole Carcasses)					
Jan					44,994
Feb					68,750
Mar					89,418
Apr					96,172
May					119,863
Jun					125,490
Jul					132,719
Aug					129,685
Sep					124,748
Oct					111,766
Nov					32,290
Dec					31,041
Hens (Whole Carcasses)					
Jan					41,616
Feb					56,019
Mar					74,334
Apr					85,682
May					97,951
Jun					109,861
Jul					114,353
Aug					114,524
Sep					108,891
Oct					88,214
Nov					32,083
Dec					32,932
Total Whole Turkeys					
Jan	1,708	37,518	2,228	3,919	86,610
Feb	2,042	47,165	2,391	7,920	124,769
Mar	2,270	63,920	2,591	11,230	163,752
Apr	3,053	62,487	4,695	19,136	181,854
May	5,169	69,737	6,539	22,089	217,814
Jun	6,336	66,156	9,966	19,955	235,351
Jul	7,420	65,845	10,824	20,427	247,072
Aug	8,629	49,174	10,045	24,789	244,209
Sep	8,135	47,269	10,077	22,786	233,639
Oct	7,167	33,811	7,828	16,619	199,980
Nov	1,664	10,942	3,597	4,309	64,373
Dec	1,072	13,577	4,964	3,546	63,973
All Other (Parts, Processed, etc.)					
Jan	917	19,271	8,291	20,815	173,859
Feb	1,065	28,221	8,471	23,212	190,910
Mar	1,265	32,084	8,991	28,413	213,995
Apr	1,503	31,018	7,617	33,617	241,878
May	2,850	36,698	8,436	35,814	248,668
Jun	3,172	37,514	6,823	40,262	272,115
Jul	3,330	34,779	6,282	38,295	265,151
Aug	3,603	31,468	4,546	38,731	256,049
Sep	3,314	28,372	4,988	37,034	230,580
Oct	2,811	23,060	3,736	34,254	204,191
Nov	1,112	13,513	4,270	19,479	150,153
Dec	1,012	14,545	4,160	20,488	154,383

--continued

**Poultry: Stocks in Cold Storage by Region, and  
United States, 2006**

Commodity and Month	Region				
	New England	Middle Atlantic	East North Central	West North Central	South Atlantic
	<i>1,000 Pounds</i>	<i>1,000 Pounds</i>	<i>1,000 Pounds</i>	<i>1,000 Pounds</i>	<i>1,000 Pounds</i>
Total Turkey					
Jan	1,138	7,262	15,563	62,242	79,597
Feb	1,377	9,733	15,850	78,406	89,826
Mar	1,634	16,021	17,499	98,252	93,577
Apr	2,584	18,839	20,691	107,413	111,079
May	3,727	21,592	24,687	114,632	114,512
Jun	4,370	30,470	26,175	123,590	132,677
Jul	4,903	28,832	30,373	128,079	132,834
Aug	8,372	33,611	32,872	117,947	136,471
Sep	8,911	34,074	30,713	99,090	129,456
Oct	8,065	34,416	25,820	92,340	114,244
Nov	928	11,074	15,986	56,133	71,519
Dec	638	10,515	14,805	58,923	70,111
Ducks					
Jan		62	3,071	6	8
Feb		125	4,323	4	3
Mar		129	7,624	6	4
Apr		148	7,638	8	1
May		124	7,543	5	8
Jun		121	5,757	3	30
Jul		137	7,097	5	31
Aug		277	6,750	3	30
Sep		240	5,828	4	26
Oct		137	5,177	66	24
Nov		184	4,702	65	41
Dec		186	4,535	10	47
Total Poultry					
Jan	3,712	44,001	40,062	107,115	434,850
Feb	4,048	45,119	42,317	123,736	463,400
Mar	4,117	50,271	45,363	146,285	435,822
Apr	4,835	53,042	50,724	152,550	440,949
May	6,057	54,358	53,597	156,418	410,663
Jun	6,710	64,887	52,666	166,114	430,935
Jul	7,395	65,561	57,885	169,590	394,159
Aug	10,487	66,469	61,002	156,674	390,014
Sep	10,831	61,982	60,654	133,394	375,347
Oct	9,760	64,968	54,437	129,034	363,465
Nov	2,408	44,325	46,716	89,828	321,738
Dec	2,431	43,318	47,382	91,004	331,330

--continued



**Poultry: Stocks in Cold Storage by Region, and  
United States, 2006 (continued)**

Commodity and Month	Region				
	East South Central	West South Central	Mountain	Pacific	US Total
	<i>1,000 Pounds</i>	<i>1,000 Pounds</i>	<i>1,000 Pounds</i>	<i>1,000 Pounds</i>	<i>1,000 Pounds</i>
Total Turkey					
Jan	2,625	56,789	10,519	24,734	260,469
Feb	3,107	75,386	10,862	31,132	315,679
Mar	3,535	96,004	11,582	39,643	377,747
Apr	4,556	93,505	12,312	52,753	423,732
May	8,019	106,435	14,975	57,903	466,482
Jun	9,508	103,670	16,789	60,217	507,466
Jul	10,750	100,624	17,106	58,722	512,223
Aug	12,232	80,642	14,591	63,520	500,258
Sep	11,449	75,641	15,065	59,820	464,219
Oct	9,978	56,871	11,564	50,873	404,171
Nov	2,776	24,455	7,867	23,788	214,526
Dec	2,084	28,122	9,124	24,034	218,356
Ducks					
Jan	11	3	1	111	3,273
Feb	15	4	12	113	4,599
Mar	26	6	12	116	7,923
Apr	27	6	29	145	8,002
May	26	6	46	170	7,928
Jun	20	5	39	151	6,126
Jul	25	6	38	167	7,506
Aug	24	6	38	158	7,286
Sep	21	5	77	140	6,341
Oct	18	8	31	116	5,577
Nov	17	4	18	103	5,134
Dec	16	4	18	12	4,828
Total Poultry					
Jan	160,078	306,075	16,856	72,064	1,184,813
Feb	160,088	308,047	16,897	80,344	1,243,996
Mar	151,536	318,266	17,765	85,612	1,255,037
Apr	147,487	304,728	17,975	100,439	1,272,729
May	136,050	306,191	20,273	104,442	1,248,049
Jun	136,808	306,468	21,167	109,109	1,294,864
Jul	134,223	293,745	19,778	105,248	1,247,584
Aug	128,100	281,031	16,896	107,291	1,217,964
Sep	125,441	294,547	16,730	101,915	1,180,841
Oct	140,329	263,389	13,565	94,320	1,133,267
Nov	117,600	217,165	9,648	62,508	911,936
Dec	143,463	245,225	10,934	58,468	973,555

**Frozen Fruit: Stocks in Cold Storage by Region and  
United States, Monthly, 2006**

Commodity and Month	Region				
	New England	Middle Atlantic	East North Central	West North Central	South Atlantic
	<i>1,000 Pounds</i>	<i>1,000 Pounds</i>	<i>1,000 Pounds</i>	<i>1,000 Pounds</i>	<i>1,000 Pounds</i>
Apples					
Jan	148	17,563	42,644	366	598
Feb	151	17,726	44,070	312	510
Mar	172	19,868	50,038	234	768
Apr	160	18,973	48,849	166	533
May	179	19,115	49,623	127	629
Jun	162	16,977	47,889	173	908
Jul	132	14,768	45,401	132	949
Aug	127	10,804	38,695	167	899
Sep	110	9,852	34,728	137	727
Oct	137	11,384	34,297	139	596
Nov	141	12,470	38,870	121	842
Dec	166	17,591	47,644	36	1,652
Apricots					
Jan					
Feb					
Mar					
Apr					
May					
Jun					
Jul					
Aug					
Sep					
Oct					
Nov					
Dec					
Blackberries					
Jan					
Feb					
Mar					
Apr					
May					
Jun					
Jul					
Aug					
Sep					
Oct					
Nov					
Dec					
Blueberries					
Jan	6,691	6,858	30,374	3,299	1,571
Feb	6,205	5,067	26,213	2,340	1,191
Mar	5,195	4,374	21,723	1,812	816
Apr	4,186	3,007	17,530	1,322	396
May	4,045	1,893	13,214	1,173	185
Jun	2,552	2,146	10,455	940	2,057
Jul	4,007	6,243	23,387	1,090	3,565
Aug	11,684	9,315	62,938	1,371	3,130
Sep	9,662	8,795	59,473	1,688	2,492
Oct	9,101	8,291	58,811	2,205	2,102
Nov	9,815	7,189	50,807	2,495	1,224
Dec	9,426	6,541	49,285	2,390	1,025

--continued

**Frozen Fruit: Stocks in Cold Storage by Region and  
United States, Monthly, 2006 (continued)**

Commodity and Month	Region				
	East South Central	West South Central	Mountain	Pacific	US Total
	<i>1,000 Pounds</i>	<i>1,000 Pounds</i>	<i>1,000 Pounds</i>	<i>1,000 Pounds</i>	<i>1,000 Pounds</i>
Apples					
Jan	539	738	39	7,566	70,201
Feb	455	731	29	7,602	71,586
Mar	368	733	31	7,989	80,201
Apr	288	715	28	8,187	77,899
May	215	808	40	11,735	82,471
Jun	162	818	39	11,093	78,221
Jul	139	686	104	9,086	71,397
Aug	110	694	93	8,148	59,737
Sep	71	623	32	7,693	53,973
Oct	29	647	25	8,447	55,701
Nov	165	601	27	8,983	62,220
Dec	524	670	34	11,521	79,838
Apricots					
Jan					2,957
Feb					2,725
Mar					2,404
Apr					1,652
May					1,620
Jun					4,294
Jul					4,078
Aug					3,633
Sep					5,251
Oct					5,353
Nov					5,314
Dec					4,921
Blackberries					
Jan					25,365
Feb					25,417
Mar					19,575
Apr					18,023
May					15,825
Jun					14,397
Jul					31,908
Aug					32,164
Sep					31,326
Oct					30,528
Nov					28,310
Dec					26,743
Blueberries					
Jan	106	607	141	18,819	68,466
Feb	91	470	139	17,038	58,754
Mar	73	425	134	12,487	47,039
Apr	58	498	135	9,481	36,613
May	46	330	134	7,889	28,909
Jun	41	293	110	8,191	26,785
Jul	96	232	67	23,533	62,220
Aug	173	360	24	34,077	123,072
Sep	154	408	28	31,651	114,351
Oct	143	342	20	29,124	110,139
Nov	126	364	69	27,737	99,826
Dec	121	487	79	29,365	98,719

--continued

**Frozen Fruit: Stocks in Cold Storage by Region and United States, Monthly, 2006**

Commodity and Month	Region				
	New England	Middle Atlantic	East North Central	West North Central	South Atlantic
	<i>1,000 Pounds</i>	<i>1,000 Pounds</i>	<i>1,000 Pounds</i>	<i>1,000 Pounds</i>	<i>1,000 Pounds</i>
Boysenberries					
Jan					
Feb					
Mar					
Apr					
May					
Jun					
Jul					
Aug					
Sep					
Oct					
Nov					
Dec					
Cherries, Tart (RTP)					
Jan	37	3,680	85,006	235	684
Feb	34	3,126	77,281	215	622
Mar	29	2,783	66,486	93	529
Apr	27	2,454	60,926	42	487
May	23	2,274	52,818	37	414
Jun	18	1,899	42,339	78	
Jul	51	4,216	122,154	208	
Aug	53	7,016	115,591	147	
Sep	49	6,622	107,942	216	
Oct	45	6,308	101,127	178	1
Nov	41	5,743	93,505	205	4
Dec	39	7,287	89,022	315	4
Cherries, Tart (Juice)					
Jan					
Feb					
Mar					
Apr					
May					
Jun					
Jul					
Aug					
Sep					
Oct					
Nov					
Dec					
Cherries, Sweet					
Jan		198	4,959	250	1
Feb		158	4,427	289	1
Mar		134	3,731	292	1
Apr		181	2,758	265	1
May		219	2,291	221	1
Jun		111	1,940	206	
Jul		233	11,095	215	3
Aug		225	10,384	250	3
Sep		265	10,197	248	3
Oct		220	9,982	236	4
Nov		161	9,030	236	58
Dec		100	8,794	322	57

--continued

**Frozen Fruit: Stocks in Cold Storage by Region and  
United States, Monthly, 2006 (continued)**

Commodity and Month	Region				
	East South Central	West South Central	Mountain	Pacific	US Total
	<i>1,000 Pounds</i>	<i>1,000 Pounds</i>	<i>1,000 Pounds</i>	<i>1,000 Pounds</i>	<i>1,000 Pounds</i>
Boysenberries					
Jan					1,612
Feb					1,272
Mar					2,073
Apr					1,839
May					1,918
Jun					1,690
Jul					2,704
Aug					2,644
Sep					2,573
Oct					2,610
Nov					2,670
Dec					3,105
Cherries, Tart (RTP)					
Jan		92	10,346	2,239	102,319
Feb		122	9,437	2,098	92,935
Mar		142	7,425	1,173	78,660
Apr		130	6,361	1,133	71,560
May		116	4,533	1,101	61,316
Jun		60	2,329	1,083	47,806
Jul		80	6,305	4,722	137,736
Aug		98	15,888	4,289	143,082
Sep		87	14,695	4,106	133,717
Oct		68	12,083	3,676	123,486
Nov		53	10,183	2,872	112,606
Dec		82	10,216	3,396	110,361
Cherries, Tart (Juice)					
Jan					1,754
Feb					1,450
Mar					1,406
Apr					1,757
May					1,399
Jun					1,383
Jul					4,912
Aug					5,849
Sep					4,574
Oct					3,684
Nov					3,382
Dec					3,892
Cherries, Sweet					
Jan	1	92	5	2,821	8,327
Feb	1	32	7	2,998	7,913
Mar	1	9	6	2,851	7,025
Apr	1	24	3	2,755	5,988
May	1	36	3	1,944	4,716
Jun		39	3	1,926	4,225
Jul	2	41	11	5,152	16,752
Aug	2	26		5,809	16,699
Sep	2		1	5,496	16,212
Oct	2			5,311	15,755
Nov	2	6		3,659	13,152
Dec	1	5		3,702	12,981

--continued

**Frozen Fruit: Stocks in Cold Storage by Region and United States, Monthly, 2006**

Commodity and Month	Region				
	New England	Middle Atlantic	East North Central	West North Central	South Atlantic
	<i>1,000 Pounds</i>	<i>1,000 Pounds</i>	<i>1,000 Pounds</i>	<i>1,000 Pounds</i>	<i>1,000 Pounds</i>
Grapes					
Jan					
Feb					
Mar					
Apr					
May					
Jun					
Jul					
Aug					
Sep					
Oct					
Nov					
Dec					
Peaches					
Jan	61	1,812	9,994	4,188	426
Feb	54	2,018	9,190	3,864	409
Mar	53	2,010	8,676	4,996	362
Apr	49	2,049	7,701	4,908	336
May	46	1,589	6,877	5,860	312
Jun	34	1,658	5,903	6,060	80
Jul	32	1,824	4,352	6,165	75
Aug	39	1,599	5,538	5,399	119
Sep	60	2,277	9,941	5,694	80
Oct	100	2,430	10,546	7,597	172
Nov	81	2,310	10,236	7,682	151
Dec	65	1,923	9,389	7,366	139
Raspberries, Black					
Jan					
Feb					
Mar					
Apr					
May					
Jun					
Jul					
Aug					
Sep					
Oct					
Nov					
Dec					
Raspberries, Red					
Jan	88	999	1,594	218	81
Feb	81	940	1,859	176	78
Mar	71	941	1,742	193	72
Apr	64	1,151	1,911	396	59
May	57	1,408	2,099	414	51
Jun	68	1,228	2,267	485	15
Jul	139	1,749	2,735	422	11
Aug	132	1,660	2,704	326	17
Sep	119	1,890	2,270	371	18
Oct	114	1,427	2,376	388	25
Nov	98	1,180	2,354	299	43
Dec	88	1,041	2,393	239	38

--continued

**Frozen Fruit: Stocks in Cold Storage by Region and United States, Monthly, 2006 (continued)**

Commodity and Month	Region				
	East South Central	West South Central	Mountain	Pacific	US Total
	<i>1,000 Pounds</i>	<i>1,000 Pounds</i>	<i>1,000 Pounds</i>	<i>1,000 Pounds</i>	<i>1,000 Pounds</i>
Grapes					
Jan					5,627
Feb					4,767
Mar					4,320
Apr					4,319
May					3,200
Jun					2,835
Jul					2,380
Aug					2,292
Sep					5,963
Oct					9,650
Nov					8,597
Dec					8,127
Peaches					
Jan	26	511	65	23,996	41,079
Feb	23	531	50	20,114	36,253
Mar	23	572	147	17,713	34,552
Apr	22	494	146	16,541	32,246
May	20	530	146	14,575	29,955
Jun	15	235	83	7,780	21,848
Jul	14	1,005	35	7,695	21,197
Aug	18	445	6	25,139	38,302
Sep	27	976	968	41,075	61,098
Oct	28	950	990	51,860	74,673
Nov	26	544	758	48,412	70,200
Dec	22	364	629	53,236	73,133
Raspberries, Black					
Jan					779
Feb					718
Mar					707
Apr					621
May					503
Jun					2,656
Jul					3,436
Aug					2,738
Sep					2,092
Oct					2,032
Nov					1,880
Dec					1,806
Raspberries, Red					
Jan	89	208	43	47,484	50,804
Feb	81	170	83	42,913	46,381
Mar	69	148	75	36,161	39,472
Apr	61	122	32	30,956	34,752
May	54	384	28	26,494	30,989
Jun	65	355	27	32,062	36,572
Jul	160	369	44	80,282	85,911
Aug	155	361	70	73,568	78,993
Sep	138	308	60	59,285	64,459
Oct	131	406	50	55,695	60,612
Nov	123	363	56	51,970	56,486
Dec	112	377	47	47,873	52,208

--continued

**Frozen Fruit: Stocks in Cold Storage by Region and United States, Monthly, 2006**

Commodity and Month	Region				
	New England	Middle Atlantic	East North Central	West North Central	South Atlantic
	<i>1,000 Pounds</i>	<i>1,000 Pounds</i>	<i>1,000 Pounds</i>	<i>1,000 Pounds</i>	<i>1,000 Pounds</i>
Strawberries					
Jan	47	5,169	9,429	1,151	514
Feb	44	4,732	8,585	819	413
Mar	40	3,837	7,798	692	2,221
Apr	44	3,859	7,441	539	2,107
May	123	3,928	7,508	641	1,497
Jun	102	4,689	7,876	300	1,472
Jul	107	5,098	8,713	537	1,183
Aug	161	4,805	8,544	389	909
Sep	120	5,602	8,438	504	902
Oct	98	5,252	8,936	723	866
Nov	82	5,020	8,402	710	710
Dec	71	4,947	6,782	991	671
Other Frozen Fruit					
Jan	2,402	8,645	242,921	6,500	2,070
Feb	2,194	8,629	210,302	5,644	1,351
Mar	1,997	8,055	174,979	4,829	1,137
Apr	1,718	7,136	157,919	4,614	1,029
May	1,574	7,042	137,850	4,183	932
Jun	1,378	6,853	117,074	3,959	982
Jul	1,353	6,450	99,594	3,787	1,016
Aug	1,234	6,765	57,589	4,400	882
Sep	1,331	3,444	67,132	4,860	2,031
Oct	4,092	4,590	236,702	9,090	3,739
Nov	22,620	4,809	291,243	8,003	3,248
Dec	23,446	4,084	264,540	8,065	3,572
Total Frozen Fruit					
Jan					
Feb					
Mar					
Apr					
May					
Jun					
Jul					
Aug					
Sep					
Oct					
Nov					
Dec					



**Frozen Fruit: Stocks in Cold Storage by Region and  
United States, Monthly, 2006 (continued)**

Commodity and Month	Region				
	East South Central	West South Central	Mountain	Pacific	US Total
	<i>1,000 Pounds</i>	<i>1,000 Pounds</i>	<i>1,000 Pounds</i>	<i>1,000 Pounds</i>	<i>1,000 Pounds</i>
Strawberries					
Jan	568	15,380	265	160,801	193,324
Feb	512	14,266	267	129,909	159,547
Mar	446	17,661	247	94,715	127,657
Apr	507	20,226	268	113,942	148,933
May	789	24,395	331	188,771	227,983
Jun	1,284	31,237	301	335,142	382,403
Jul	1,364	30,254	272	353,197	400,725
Aug	1,299	28,187	135	312,760	357,189
Sep	1,155	24,805	166	253,018	294,710
Oct	1,032	20,624	154	222,804	260,489
Nov	927	18,467	106	197,928	232,352
Dec	792	16,291	112	171,818	202,475
Other Frozen Fruit					
Jan	151	13,622	2,939	120,173	399,423
Feb	141	14,678	2,726	108,111	353,776
Mar	127	15,978	2,883	91,905	301,890
Apr	126	16,752	2,675	82,744	274,713
May	141	14,519	2,386	80,845	249,472
Jun	134	13,419	2,485	77,717	224,001
Jul	135	14,305	51	85,353	212,044
Aug	152	13,685	89	76,055	160,851
Sep	181	12,959	118	80,903	172,959
Oct	269	14,310	138	152,057	424,987
Nov	189	15,220	86	150,029	495,447
Dec	207	16,792	73	137,443	458,222
Total Frozen Fruit					
Jan					972,037
Feb					863,494
Mar					746,981
Apr					710,915
May					740,276
Jun					849,116
Jul					1,057,400
Aug					1,027,245
Sep					963,258
Oct					1,179,699
Nov					1,192,442
Dec					1,136,531

**Frozen Juice Concentrate: Stocks in Cold Storage by Region  
and United States, Monthly, 2006**

Commodity and Month	Region				
	New England	Middle Atlantic	East North Central	West North Central	South Atlantic
	<i>1,000 Pounds</i>	<i>1,000 Pounds</i>	<i>1,000 Pounds</i>	<i>1,000 Pounds</i>	<i>1,000 Pounds</i>
Orange Juice (Pounds) <sup>1 2</sup>					
Jan	12		1,104	104	1,024,285
Feb	12		1,339	116	1,034,371
Mar	11		1,164	125	965,437
Apr	12		1,118	87	1,044,717
May	18		857	98	1,112,947
Jun	12		945	53	1,061,686
Jul	15		975	114	963,901
Aug	10		1,111	88	853,843
Sep	9		1,172	51	745,250
Oct	8		1,077	53	685,748
Nov	37		3,822	179	620,851
Dec	8		1,226	46	650,155
Orange Juice (Gallon Equivalent) <sup>3</sup>					
Jan	1		112	11	103,505
Feb	1		135	12	104,524
Mar	1		118	13	97,558
Apr	1		113	9	105,570
May	2		87	10	112,464
Jun	1		95	5	107,284
Jul	2		99	12	97,403
Aug	1		112	9	86,282
Sep	1		118	5	75,308
Oct	1		109	5	69,295
Nov	4		386	18	62,738
Dec	1		124	5	65,699
Other Juice					
Jan	22,444	33,467	35,816	1,188	101,466
Feb	19,187	31,987	28,276	1,862	104,072
Mar	13,517	28,089	28,007	2,344	127,019
Apr	7,951	33,926	25,697	2,565	136,078
May	4,334	29,027	26,362	2,465	127,942
Jun	3,666	29,929	26,508	2,115	120,497
Jul	3,664	27,125	22,081	1,970	119,979
Aug	3,447	21,068	18,650	1,726	107,488
Sep	8,563	21,646	25,380	1,474	92,804
Oct	16,854	29,608	26,792	1,133	96,451
Nov	23,372	30,382	25,831	1,132	97,635
Dec	33,508	29,669	26,441	893	98,716
Total Frozen Juices <sup>4</sup>					
Jan	22,456	33,467	36,920	1,292	1,125,751
Feb	19,199	31,987	29,615	1,978	1,138,443
Mar	13,528	28,089	29,171	2,469	1,092,456
Apr	7,963	33,926	26,815	2,652	1,180,795
May	4,352	29,027	27,219	2,563	1,240,889
Jun	3,678	29,929	27,453	2,168	1,182,183
Jul	3,679	27,125	23,056	2,084	1,083,880
Aug	3,457	21,068	19,761	1,814	961,331
Sep	8,572	21,646	26,552	1,525	838,054
Oct	16,862	29,608	27,869	1,186	782,199
Nov	23,409	30,382	29,653	1,311	718,486
Dec	33,516	29,669	27,667	939	748,871

**Frozen Juice Concentrate: Stocks in Cold Storage by Region  
and United States, Monthly, 2006 (continued)**

Commodity and Month	Region				
	East South Central	West South Central	Mountain	Pacific	US Total
	<i>1,000 Pounds</i>	<i>1,000 Pounds</i>	<i>1,000 Pounds</i>	<i>1,000 Pounds</i>	<i>1,000 Pounds</i>
Orange Juice (Pounds) <sup>1 2</sup>					
Jan	24	2,700	1,028	36,669	1,065,926
Feb	46	2,639	1,280	36,979	1,076,782
Mar	36	2,554	1,426	34,909	1,005,662
Apr	36	2,484	1,830	37,259	1,087,543
May	32	2,583	1,734	39,447	1,157,716
Jun	20	2,602	1,203	37,628	1,104,149
Jul	18	2,474	1,134	33,998	1,002,629
Aug	16	2,311	954	30,502	888,835
Sep	14	2,168	1,245	26,058	775,967
Oct	13	2,001	1,134	24,227	714,261
Nov	12	1,823	1,433	22,098	650,255
Dec	13	1,618	1,426	23,720	678,212
Orange Juice (Gallon Equivalent) <sup>3</sup>					
Jan	2	273	104	3,705	107,713
Feb	5	267	129	3,737	108,810
Mar	4	258	144	3,528	101,623
Apr	4	251	185	3,765	109,897
May	3	261	175	3,986	116,988
Jun	2	263	122	3,802	111,575
Jul	2	250	115	3,436	101,317
Aug	2	234	96	3,082	89,818
Sep	1	219	126	2,633	78,412
Oct	1	202	115	2,448	72,177
Nov	1	184	145	2,233	65,709
Dec	1	164	144	2,397	68,534
Other Juice					
Jan	98	16,472	1,349	88,020	300,320
Feb	77	16,364	1,417	83,459	286,701
Mar	72	16,649	2,253	95,850	313,800
Apr	74	14,911	2,170	99,919	323,291
May	69	14,735	1,880	96,431	303,245
Jun	67	13,889	2,109	84,169	282,949
Jul	64	13,067	2,753	78,286	268,989
Aug	59	11,500	6,392	72,693	243,023
Sep	57	12,349	6,175	63,391	231,839
Oct	67	12,752	6,821	71,797	262,275
Nov	75	13,064	8,291	97,358	297,140
Dec	81	18,118	7,662	95,937	311,025
Total Frozen Juices <sup>4</sup>					
Jan	122	19,172	2,377	124,689	1,366,246
Feb	123	19,003	2,697	120,438	1,363,483
Mar	108	19,203	3,679	130,759	1,319,462
Apr	110	17,395	4,000	137,178	1,410,834
May	101	17,318	3,614	135,878	1,460,961
Jun	87	16,491	3,312	121,797	1,387,098
Jul	82	15,541	3,887	112,284	1,271,618
Aug	75	13,811	7,346	103,195	1,131,858
Sep	71	14,517	7,420	89,449	1,007,806
Oct	80	14,753	7,955	96,024	976,536
Nov	87	14,887	9,724	119,456	947,395
Dec	94	19,736	9,088	119,657	989,237

<sup>1</sup> Adjusted to 42.0 degree Brix equivalent.

<sup>2</sup> Middle Atlantic combined with South Atlantic.

<sup>3</sup> 9.896 pounds per gallon.

<sup>4</sup> Middle Atlantic orange juice combined with South Atlantic.

**Frozen Vegetables: Stocks in Cold Storage by Region  
and United States, Monthly, 2006 <sup>1</sup>**

Commodity and Month	Region				
	New England	Middle Atlantic	East North Central	West North Central	South Atlantic
	<i>1,000 Pounds</i>	<i>1,000 Pounds</i>	<i>1,000 Pounds</i>	<i>1,000 Pounds</i>	<i>1,000 Pounds</i>
Asparagus					
Jan		567	2,953	45	112
Feb		704	2,511	38	171
Mar		686	2,066	16	119
Apr		461	1,319	13	105
May		708	4,065	11	72
Jun		1,022	6,747	4	100
Jul		1,065	6,465	10	114
Aug		850	5,790	45	101
Sep		735	5,408	42	86
Oct		761	4,424	87	64
Nov		753	4,363	120	61
Dec		857	3,657	138	36
Lima Beans, Fordhook					
Jan		1,584	1,164	71	751
Feb		1,247	949	60	478
Mar		1,136	794	53	441
Apr		904	723	67	369
May		787	496	94	299
Jun		683	801	72	250
Jul		596	415	54	210
Aug		408	716	37	453
Sep		469	796	43	427
Oct		1,228	880	81	528
Nov		977	884	61	442
Dec		1,310	668	88	410
Lima Beans, Baby					
Jan		7,342	3,172	1,181	4,899
Feb		6,470	3,063	1,946	4,367
Mar		6,082	3,270	1,736	4,243
Apr		5,012	2,847	1,598	3,938
May		4,026	2,479	1,475	3,617
Jun		3,846	1,974	1,153	2,919
Jul		3,429	1,592	969	2,447
Aug		3,475	2,748	1,580	2,626
Sep		4,534	2,264	4,138	3,375
Oct		4,744	2,769	3,288	5,567
Nov		4,385	2,743	2,823	5,140
Dec		4,369	1,936	2,716	4,901
Green Beans, Regular Cut					
Jan		18,647	36,106	7,592	2,364
Feb		18,309	31,070	6,119	2,515
Mar		17,014	26,321	5,153	2,500
Apr		12,305	19,368	4,625	2,371
May		9,142	16,118	4,195	2,042
Jun		7,367	12,339	2,348	1,520
Jul		14,796	31,998	2,421	2,853
Aug		24,573	55,015	6,597	4,101
Sep		28,810	73,599	7,806	4,633
Oct		25,685	69,154	6,678	4,704
Nov		31,062	62,495	4,988	5,382
Dec		30,329	49,733	4,956	4,476

See footnote(s) at end of table.

--continued

**Frozen Vegetables: Stocks in Cold Storage by Region  
and United States, Monthly, 2006<sup>1</sup> (continued)**

Commodity and Month	Region				
	East South Central	West South Central	Mountain	Pacific	US Total
	<i>1,000 Pounds</i>	<i>1,000 Pounds</i>	<i>1,000 Pounds</i>	<i>1,000 Pounds</i>	<i>1,000 Pounds</i>
Asparagus					
Jan		305	6	4,815	8,803
Feb		241	8	4,138	7,811
Mar		130	7	3,120	6,144
Apr		246	7	2,918	5,069
May		283	11	2,481	7,631
Jun		312	9	3,735	11,929
Jul		356	9	3,568	11,587
Aug		262	5	3,217	10,270
Sep		277	4	1,376	7,928
Oct		332	2	1,225	6,895
Nov		401	3	1,021	6,722
Dec		557	3	930	6,178
Lima Beans, Fordhook					
Jan		185		2,093	5,848
Feb		156		1,704	4,594
Mar		121		1,266	3,811
Apr		183		917	3,163
May		140		636	2,452
Jun		56		506	2,368
Jul		46		698	2,019
Aug		70		733	2,417
Sep		67		5,178	6,980
Oct		68		4,040	6,825
Nov		32	2	4,675	7,073
Dec		57	2	4,008	6,543
Lima Beans, Baby					
Jan		393	409	19,779	37,175
Feb		509	405	17,641	34,401
Mar		485	407	15,556	31,779
Apr		455	178	13,433	27,461
May		452	11	12,545	24,605
Jun		520	8	11,431	21,851
Jul		398	7	9,473	18,315
Aug		363	5	12,339	23,136
Sep		217	6	24,781	39,315
Oct		286	2	32,939	49,595
Nov		318		30,864	46,273
Dec		277		27,650	41,849
Green Beans, Regular Cut					
Jan		1,272	191	77,482	143,654
Feb		1,196	161	62,274	121,644
Mar		1,150	73	49,269	101,480
Apr		1,165	131	41,716	81,681
May		989	129	33,630	66,245
Jun		826	55	29,922	54,377
Jul		1,059	179	68,841	122,147
Aug		1,164	205	107,583	199,238
Sep		1,138	135	133,371	249,492
Oct		1,303	115	124,758	232,397
Nov		1,582	117	113,427	219,053
Dec		1,521	39	92,556	183,610

See footnote(s) at end of table.

--continued

**Frozen Vegetables: Stocks in Cold Storage by Region  
and United States, Monthly, 2006 <sup>1</sup>**

Commodity and Month	Region				
	New England	Middle Atlantic	East North Central	West North Central	South Atlantic
	<i>1,000 Pounds</i>	<i>1,000 Pounds</i>	<i>1,000 Pounds</i>	<i>1,000 Pounds</i>	<i>1,000 Pounds</i>
Green Beans, French Style					
Jan		5,640	4,294	673	242
Feb		5,133	3,859	611	352
Mar		5,549	3,167	771	281
Apr		4,184	2,076	559	287
May		3,863	1,573	495	209
Jun		2,921	1,272	264	220
Jul		6,178	4,778	459	273
Aug		8,031	8,223	1,135	350
Sep		9,307	11,139	469	406
Oct		8,169	10,387	570	460
Nov		7,290	9,419	569	529
Dec		6,542	7,330	370	532
Broccoli, Spears					
Jan		6,800	6,102		3,447
Feb		7,023	5,423		2,967
Mar		7,921	5,885		4,288
Apr		8,629	6,614		3,523
May		7,783	6,188	66	3,096
Jun		7,487	5,988	60	3,101
Jul		6,763	5,544	58	2,941
Aug		8,128	4,807	14	1,830
Sep		7,493	4,899	1	2,127
Oct		6,908	5,167	1	2,637
Nov		5,708	4,516		2,314
Dec		5,091	4,153	1	2,069
Broccoli, Chopped & Cut					
Jan		7,846	5,637	1,197	3,849
Feb		8,415	5,652	1,250	3,778
Mar		8,705	5,422	1,245	4,198
Apr		9,646	6,352	1,346	4,087
May		9,692	6,510	1,210	3,832
Jun		9,205	6,155	1,046	3,765
Jul		8,992	6,896	978	3,456
Aug		7,306	8,093	603	2,580
Sep		5,925	6,954	591	2,568
Oct		6,380	6,740	483	2,845
Nov		5,963	6,349	400	3,406
Dec		5,113	5,576	347	3,091
Brussels Sprouts					
Jan		3,347	1,651	1	669
Feb		3,303	1,504	1	560
Mar		2,848	1,307	32	491
Apr		2,627	1,279	18	411
May		2,368	1,124	52	387
Jun		2,133	953	41	366
Jul		1,646	874	29	314
Aug		1,352	779	21	281
Sep		995	561	1	195
Oct		1,318	968		293
Nov		2,182	1,609	1	468
Dec		2,927	1,697		679

See footnote(s) at end of table.

--continued

**Frozen Vegetables: Stocks in Cold Storage by Region  
and United States, Monthly, 2006<sup>1</sup> (continued)**

Commodity and Month	Region				
	East South Central	West South Central	Mountain	Pacific	US Total
	<i>1,000 Pounds</i>	<i>1,000 Pounds</i>	<i>1,000 Pounds</i>	<i>1,000 Pounds</i>	<i>1,000 Pounds</i>
Green Beans, French Style					
Jan		170	15	9,792	20,826
Feb		231	9	10,249	20,444
Mar		186	3	5,701	15,658
Apr		233	40	4,695	12,074
May		110	19	3,490	9,759
Jun		139	12	3,560	8,388
Jul		98	6	10,690	22,482
Aug		111	6	16,997	34,853
Sep		131	6	17,778	39,236
Oct		79	7	16,525	36,197
Nov		60	10	14,445	32,322
Dec		105	102	12,452	27,433
Broccoli, Spears					
Jan		15,420	1	10,263	42,033
Feb		15,604	1	9,221	40,239
Mar		16,832	6	11,046	45,978
Apr		16,891		6,451	42,108
May		16,557	10	5,180	38,880
Jun		11,918	10	4,135	32,699
Jul		15,158	7	3,325	33,796
Aug		12,005	7	3,483	30,274
Sep		12,039	7	2,044	28,610
Oct		12,738	7	4,544	32,002
Nov		11,270	7	6,247	30,062
Dec		12,295	7	4,012	27,628
Broccoli, Chopped & Cut					
Jan		18,885	273	23,734	61,421
Feb		19,291	222	24,349	62,957
Mar		18,783	240	21,445	60,038
Apr		18,699	449	21,922	62,501
May		17,372	284	21,941	60,841
Jun		19,089	170	22,339	61,769
Jul		17,871	136	26,464	64,793
Aug		13,788	266	29,555	62,191
Sep		12,759	229	26,174	55,200
Oct		12,633	370	23,933	53,384
Nov		10,385	551	23,466	50,520
Dec		11,542	620	20,566	46,855
Brussels Sprouts					
Jan		326		14,181	20,175
Feb		350		12,028	17,746
Mar		378		9,415	14,471
Apr		386		8,222	12,943
May		450		7,335	11,716
Jun		479	4	6,267	10,243
Jul		350	4	5,096	8,313
Aug		437	3	3,213	6,086
Sep		349		1,929	4,030
Oct		622		4,237	7,438
Nov		350		11,033	15,643
Dec		360		15,987	21,650

See footnote(s) at end of table.

--continued

**Frozen Vegetables: Stocks in Cold Storage by Region  
and United States, Monthly, 2006<sup>1</sup>**

Commodity and Month	Region				
	New England	Middle Atlantic	East North Central	West North Central	South Atlantic
	<i>1,000 Pounds</i>	<i>1,000 Pounds</i>	<i>1,000 Pounds</i>	<i>1,000 Pounds</i>	<i>1,000 Pounds</i>
Carrots, Diced					
Jan		14,430	28,802	3,841	868
Feb		12,801	28,742	5,567	869
Mar		12,719	25,408	5,193	731
Apr		10,108	23,785	4,713	707
May		9,162	20,733	4,087	584
Jun		7,787	15,196	3,099	440
Jul		6,555	12,167	2,505	348
Aug		4,686	10,469	211	430
Sep		3,510	13,369	3,151	487
Oct		4,371	20,168	6,017	507
Nov		6,873	28,014	6,143	631
Dec		7,492	23,699	6,139	671
Carrots, Other					
Jan		15,178	25,636	1,818	1,536
Feb		15,509	22,038	1,775	1,475
Mar		13,879	19,138	1,589	1,319
Apr		12,161	16,795	1,040	1,205
May		11,890	14,434	865	1,036
Jun		9,902	12,455	1,745	1,027
Jul		9,349	10,385	1,654	890
Aug		8,063	10,512	1,322	718
Sep		6,811	12,183	696	622
Oct		12,761	28,296	2,233	773
Nov		14,781	28,665	1,832	804
Dec		14,938	15,914	1,235	842
Cauliflower					
Jan		3,076	3,884	214	1,618
Feb		3,426	3,476	232	1,353
Mar		3,279	3,253	121	1,264
Apr		3,334	2,548	128	1,138
May		2,263	2,194	802	841
Jun		2,281	2,083	703	719
Jul		2,648	2,597	673	764
Aug		3,161	2,799	525	862
Sep		3,722	2,496	454	890
Oct		3,357	2,809	312	899
Nov		3,417	3,781	133	932
Dec		3,483	2,639	118	910
Corn, Cut					
Jan		33,886	71,590	57,612	4,218
Feb		33,595	62,927	44,715	3,770
Mar		28,335	56,154	40,406	5,633
Apr		23,179	47,705	33,360	4,709
May		17,643	39,885	25,736	5,292
Jun		14,607	32,490	14,336	5,129
Jul		13,654	25,824	11,995	5,771
Aug		33,468	70,791	49,750	6,561
Sep		46,507	91,949	91,622	6,912
Oct		44,265	91,025	86,907	6,189
Nov		41,733	83,750	70,466	5,628
Dec		39,164	66,299	62,985	4,942

See footnote(s) at end of table.

--continued



**Frozen Vegetables: Stocks in Cold Storage by Region  
and United States, Monthly, 2006<sup>1</sup> (continued)**

Commodity and Month	Region				
	East South Central	West South Central	Mountain	Pacific	US Total
	<i>1,000 Pounds</i>	<i>1,000 Pounds</i>	<i>1,000 Pounds</i>	<i>1,000 Pounds</i>	<i>1,000 Pounds</i>
Carrots, Diced					
Jan		1,042	32	56,372	105,387
Feb		1,938	28	52,544	102,489
Mar		2,594	25	45,977	92,647
Apr		1,803	23	37,789	78,928
May		978	20	33,759	69,323
Jun		891	36	37,091	64,540
Jul		940	46	29,081	51,642
Aug		967	36	27,154	43,953
Sep		1,011	33	39,369	60,930
Oct		1,066	48	59,108	91,285
Nov		1,221	54	80,893	123,829
Dec		618	60	78,480	117,159
Carrots, Other					
Jan		9,622	203	80,791	134,784
Feb		10,438	124	78,351	129,710
Mar		11,526	127	74,562	122,140
Apr		12,249	100	69,448	112,998
May		11,668	70	63,751	103,714
Jun		10,858	96	61,445	97,528
Jul		10,353	149	58,811	91,591
Aug		9,643	82	49,383	79,723
Sep		8,386	95	53,759	82,552
Oct		8,287	62	84,094	136,506
Nov		9,407	111	92,472	148,072
Dec		9,292	88	85,140	127,449
Cauliflower					
Jan		9,169	67	20,867	38,895
Feb		7,885	106	18,512	34,990
Mar		6,031	83	16,504	30,535
Apr		5,074	84	12,781	25,087
May		4,200	122	10,385	20,807
Jun		3,759	152	8,997	18,694
Jul		3,398	139	10,846	21,065
Aug		2,662	106	13,423	23,538
Sep		3,536	83	15,719	26,900
Oct		3,957	133	24,945	36,412
Nov		4,925	106	25,993	39,287
Dec		5,324	106	25,616	38,196
Corn, Cut					
Jan		1,623	6,741	244,301	419,971
Feb		1,935	5,331	211,557	363,830
Mar		2,013	4,553	183,557	320,651
Apr		1,598	4,235	160,345	275,131
May		1,547	3,165	128,644	221,912
Jun		1,748	2,915	117,332	188,557
Jul		1,437	1,724	120,566	180,971
Aug		1,598	11,423	219,096	392,687
Sep		1,620	14,171	314,522	567,303
Oct		1,796	16,344	355,807	602,333
Nov		1,476	16,497	321,872	541,422
Dec		2,296	14,717	285,268	475,671

See footnote(s) at end of table.

--continued

**Frozen Vegetables: Stocks in Cold Storage by Region  
and United States, Monthly, 2006<sup>1</sup>**

Commodity and Month	Region				
	New England	Middle Atlantic	East North Central	West North Central	South Atlantic
	<i>1,000 Pounds</i>	<i>1,000 Pounds</i>	<i>1,000 Pounds</i>	<i>1,000 Pounds</i>	<i>1,000 Pounds</i>
Corn, Cob					
Jan		10,622	32,114	41,925	5,080
Feb		9,261	27,133	36,015	4,856
Mar		8,272	25,754	28,411	4,549
Apr		5,926	22,797	22,829	4,758
May		5,503	15,786	15,453	3,290
Jun		4,821	11,880	10,009	2,702
Jul		3,802	8,972	7,816	3,166
Aug		15,013	25,008	34,829	5,864
Sep		22,887	34,127	62,173	9,892
Oct		25,630	34,117	59,932	11,418
Nov		20,590	35,732	58,232	10,662
Dec		19,516	29,291	65,077	9,257
Mixed Vegetables					
Jan		5,359	8,166	851	1,755
Feb		4,736	7,709	675	1,670
Mar		4,567	9,271	362	2,460
Apr		3,884	9,145	303	2,304
May		3,647	9,054	240	2,346
Jun		3,990	9,419	532	2,324
Jul		3,915	10,867	263	2,237
Aug		4,759	11,627	4,287	2,572
Sep		5,648	11,325	8,584	2,583
Oct		4,245	11,167	7	2,172
Nov		5,026	10,633	807	2,484
Dec		4,737	9,972	1,045	2,782
Okra					
Jan		1,083	496	7,014	2,487
Feb		1,066	476	6,313	2,503
Mar		1,247	389	520	2,436
Apr		1,172	356	3,065	2,192
May		1,599	341	2,289	1,890
Jun		1,592	269	4,575	4,411
Jul		1,779	332	7,909	4,723
Aug		1,556	247	10,218	4,742
Sep		1,623	239	10,188	4,851
Oct		1,380	346	10,602	4,513
Nov		1,599	290	10,477	3,840
Dec		1,628	338	10,312	3,400
Onion Rings					
Jan		169	2,829	768	167
Feb		112	2,711	579	193
Mar		215	3,000	634	1,708
Apr		209	2,887	636	1,642
May		164	3,400	479	1,787
Jun		171	3,606	763	1,922
Jul		147	3,186	972	1,904
Aug		183	2,801	1,107	1,687
Sep		203	2,764	726	1,589
Oct		223	3,470	845	1,659
Nov		227	3,121	1,320	1,598
Dec		194	3,418	473	1,636

See footnote(s) at end of table.

--continued

**Frozen Vegetables: Stocks in Cold Storage by Region  
and United States, Monthly, 2006<sup>1</sup> (continued)**

Commodity and Month	Region				
	East South Central	West South Central	Mountain	Pacific	US Total
	<i>1,000 Pounds</i>	<i>1,000 Pounds</i>	<i>1,000 Pounds</i>	<i>1,000 Pounds</i>	<i>1,000 Pounds</i>
Corn, Cob					
Jan		1,339	2,981	140,403	234,464
Feb		1,122	3,724	117,335	199,446
Mar		1,329	1,269	94,320	163,904
Apr		1,263	395	72,613	130,581
May		1,168	387	45,513	87,100
Jun		1,697	382	40,247	71,738
Jul		1,676	343	45,833	71,608
Aug		1,692	346	106,491	189,243
Sep		1,842	7,235	177,873	316,029
Oct		2,302	5,211	185,714	324,324
Nov		2,081	2,900	175,646	305,843
Dec		2,181	351	156,021	281,694
Mixed Vegetables					
Jan		11,008	1,122	24,568	52,829
Feb		8,481	1,923	26,006	51,200
Mar		8,176	1,887	23,461	50,184
Apr		10,093	1,062	23,451	50,242
May		8,633	1,228	21,701	46,849
Jun		8,313	1,370	24,908	50,856
Jul		8,943	1,370	23,009	50,604
Aug		7,957	1,370	29,060	61,632
Sep		7,961	1,974	29,722	67,797
Oct		8,214	1,150	30,485	57,440
Nov		7,484	1,130	29,658	57,222
Dec		4,681	1,017	27,691	51,925
Okra					
Jan		16,020		565	27,665
Feb		11,987		590	22,935
Mar		7,238		569	12,399
Apr		5,470		515	12,770
May		6,091		397	12,607
Jun		14,919		597	26,363
Jul		20,419		578	35,740
Aug		22,729		388	39,880
Sep		21,968		703	39,572
Oct		20,820		1,156	38,817
Nov		17,845		912	34,963
Dec		14,945		884	31,507
Onion Rings					
Jan		348	363	236	4,880
Feb		448	362	162	4,567
Mar		490	434	204	6,685
Apr		343	490	216	6,423
May		559	594	204	7,187
Jun		340	518	212	7,532
Jul		757	518	177	7,661
Aug		497	359	180	6,814
Sep		426	337	168	6,213
Oct		551	533	229	7,510
Nov		538	499	201	7,504
Dec		944	659	209	7,533

See footnote(s) at end of table.

--continued

**Frozen Vegetables: Stocks in Cold Storage by Region  
and United States, Monthly, 2006<sup>1</sup>**

Commodity and Month	Region				
	New England	Middle Atlantic	East North Central	West North Central	South Atlantic
	<i>1,000 Pounds</i>	<i>1,000 Pounds</i>	<i>1,000 Pounds</i>	<i>1,000 Pounds</i>	<i>1,000 Pounds</i>
Onions, Other					
Jan		3,093	3,126	310	8,348
Feb		3,213	3,487	329	8,982
Mar		2,877	2,776	291	4,843
Apr		3,190	2,987	337	4,468
May		2,966	2,967	224	4,226
Jun		3,108	2,552	319	3,629
Jul		3,311	2,390	429	3,629
Aug		3,045	2,635	533	4,069
Sep		2,726	2,958	342	4,465
Oct		2,465	2,771	236	4,813
Nov		2,870	2,342	259	4,384
Dec		3,484	2,473	280	4,677
Peas, Blackeye					
Jan		1,121	62		1,548
Feb		1,050	61		1,305
Mar		1,019	53		2,862
Apr		1,548	90		2,592
May		1,494	83	18	2,180
Jun		1,498	106	18	1,832
Jul		1,273	116	8	1,452
Aug		1,012	189	6	2,906
Sep		927	112		2,881
Oct		587	200		3,437
Nov		398	127		2,941
Dec		727	81		3,282
Peas, Green					
Jan		26,327	25,133	17,887	7,690
Feb		22,048	21,064	15,627	4,871
Mar		17,275	17,517	14,104	6,161
Apr		13,032	17,745	10,442	4,855
May		10,769	14,168	7,426	4,462
Jun		29,628	17,586	9,900	10,112
Jul		54,152	42,540	25,945	15,039
Aug		46,947	43,544	39,223	16,051
Sep		43,430	39,068	37,567	14,718
Oct		38,547	35,243	31,155	13,030
Nov		36,500	28,220	16,129	11,885
Dec		32,296	22,399	14,752	9,418
Peas and Carrots Mixed					
Jan		1,121	758	1	85
Feb		1,270	815	2	81
Mar		1,116	873	2	177
Apr		1,111	828	2	177
May		855	900	2	145
Jun		1,063	742	7	152
Jul		1,050	878	5	228
Aug		1,132	1,022	6	249
Sep		1,007	894	5	212
Oct		1,051	760	5	217
Nov		1,232	744	6	186
Dec		1,034	808	4	193

See footnote(s) at end of table.

--continued

**Frozen Vegetables: Stocks in Cold Storage by Region  
and United States, Monthly, 2006<sup>1</sup> (continued)**

Commodity and Month	Region				
	East South Central	West South Central	Mountain	Pacific	US Total
	<i>1,000 Pounds</i>	<i>1,000 Pounds</i>	<i>1,000 Pounds</i>	<i>1,000 Pounds</i>	<i>1,000 Pounds</i>
Onions, Other					
Jan		1,289	15,085	16,076	47,327
Feb		1,341	16,301	16,921	50,574
Mar		1,446	16,729	18,991	47,953
Apr		1,276	15,593	20,002	47,853
May		1,553	15,373	18,835	46,144
Jun		1,148	13,780	13,656	38,192
Jul		1,747	13,737	10,803	36,046
Aug		1,966	15,871	12,243	40,362
Sep		1,760	14,590	14,582	41,423
Oct		1,614	14,625	16,141	42,665
Nov		1,836	14,285	15,251	41,227
Dec		2,222	11,800	12,450	37,386
Peas, Blackeye					
Jan		833		151	3,715
Feb		695		223	3,334
Mar		605		229	4,768
Apr		743		201	5,174
May		451		188	4,414
Jun		400		226	4,080
Jul		565		173	3,587
Aug		499		420	5,032
Sep		410		251	4,581
Oct		396		274	4,894
Nov		584		166	4,216
Dec		443		251	4,784
Peas, Green					
Jan		2,184	4,774	102,698	186,693
Feb		2,463	4,605	78,728	149,406
Mar		2,655	4,333	62,098	124,143
Apr		3,106	3,994	51,081	104,255
May		3,202	5,747	38,410	84,184
Jun		3,918	3,102	148,267	222,513
Jul		4,955	2,854	244,249	389,734
Aug		4,671	8,617	231,769	390,822
Sep		3,260	8,628	214,107	360,778
Oct		2,975	6,419	194,688	322,057
Nov		3,060	4,692	171,353	271,839
Dec		3,211	3,441	144,834	230,351
Peas and Carrots Mixed					
Jan		133	38	3,300	5,436
Feb		123	25	3,586	5,902
Mar		112	30	2,239	4,549
Apr		134	27	2,327	4,606
May		131	24	2,294	4,351
Jun		148	25	2,285	4,422
Jul		124	24	2,591	4,900
Aug		126	11	2,699	5,245
Sep		99	13	2,668	4,898
Oct		126	31	2,531	4,721
Nov		86	22	2,804	5,080
Dec		56	15	2,836	4,946

See footnote(s) at end of table.

--continued

**Frozen Vegetables: Stocks in Cold Storage by Region  
and United States, Monthly, 2006<sup>1</sup>**

Commodity and Month	Region				
	New England	Middle Atlantic	East North Central	West North Central	South Atlantic
	<i>1,000 Pounds</i>	<i>1,000 Pounds</i>	<i>1,000 Pounds</i>	<i>1,000 Pounds</i>	<i>1,000 Pounds</i>
Spinach					
Jan		8,640	3,158	91	1,910
Feb		9,119	2,665	97	2,019
Mar		8,079	3,486	106	3,210
Apr		12,699	4,031	134	3,879
May		18,038	4,769	66	4,717
Jun		16,139	6,939	182	4,750
Jul		16,329	6,777	178	5,066
Aug		16,164	6,503	143	4,908
Sep		12,498	5,540	143	4,352
Oct		11,976	5,204	129	3,781
Nov		15,680	4,952	135	3,429
Dec		11,435	3,387	146	2,640
Squash, Summer & Zucchini					
Jan		6,085	22,955		618
Feb		5,602	21,495		810
Mar		5,181	20,736	40	1,046
Apr		5,208	20,464	37	932
May		4,973	19,407		788
Jun		5,071	18,260	1	727
Jul		5,059	18,745	1	905
Aug		5,283	24,754		1,048
Sep		5,169	30,882	1	996
Oct		3,562	28,867	1	1,008
Nov		3,751	26,814	1	857
Dec		4,213	25,543	47	967
Southern Greens					
Jan		2,281	237	1	913
Feb		2,380	231	1	807
Mar		2,739	269	2	4,828
Apr		1,881	232	1	1,821
May		2,105	203	1	2,034
Jun		4,255	153	1	1,933
Jul		4,310	125	1	2,263
Aug		2,258	583	1	3,357
Sep		2,303	692	1	3,403
Oct		2,300	715		3,089
Nov		2,700	612		2,422
Dec		2,186	505		3,121

See footnote(s) at end of table.

--continued

**Frozen Vegetables: Stocks in Cold Storage by Region  
and United States, Monthly, 2006<sup>1</sup> (continued)**

Commodity and Month	Region				
	East South Central	West South Central	Mountain	Pacific	US Total
	<i>1,000 Pounds</i>	<i>1,000 Pounds</i>	<i>1,000 Pounds</i>	<i>1,000 Pounds</i>	<i>1,000 Pounds</i>
Spinach					
Jan		13,592	44	16,953	44,388
Feb		19,152	40	17,914	51,006
Mar		18,115	46	34,538	67,580
Apr		16,133	38	57,836	94,750
May		16,633	28	68,212	112,463
Jun		14,671	18	64,908	107,607
Jul		14,065	13	62,817	105,245
Aug		11,793	13	54,705	94,229
Sep		9,207	3	45,974	77,717
Oct		7,893	51	41,241	70,275
Nov		6,597	36	32,416	63,245
Dec		7,368	50	27,648	52,674
Squash, Summer & Zucchini					
Jan		4,514	210	24,310	58,692
Feb		4,401	166	23,382	55,856
Mar		3,943	178	21,579	52,703
Apr		6,312	1,322	18,717	52,992
May		7,148	153	15,176	47,645
Jun		7,366	196	19,083	50,704
Jul		7,437	153	23,313	55,613
Aug		6,797	91	23,058	61,031
Sep		5,817	137	24,858	67,860
Oct		4,950	110	27,106	65,604
Nov		5,291	150	24,929	61,793
Dec		5,877	176	27,432	64,255
Southern Greens					
Jan		9,330		1,788	14,550
Feb		10,470		1,625	15,514
Mar		12,004	11	1,437	21,290
Apr		12,198	11	1,149	17,293
May		10,257	11	1,084	15,695
Jun		9,983	11	1,210	17,546
Jul		9,175		1,668	17,542
Aug		8,478		1,566	16,243
Sep		8,156		1,700	16,255
Oct		7,500		1,650	15,254
Nov		7,400		1,806	14,940
Dec		7,370		1,644	14,826

See footnote(s) at end of table.

--continued

**Frozen Vegetables: Stocks in Cold Storage by Region  
and United States, Monthly, 2006 <sup>1</sup>**

Commodity and Month	Region				
	New England	Middle Atlantic	East North Central	West North Central	South Atlantic
	<i>1,000 Pounds</i>	<i>1,000 Pounds</i>	<i>1,000 Pounds</i>	<i>1,000 Pounds</i>	<i>1,000 Pounds</i>
Other Vegetables					
Jan		39,539	44,512	8,784	24,505
Feb		40,470	46,583	8,264	25,100
Mar		41,241	47,171	7,877	23,115
Apr		35,243	46,379	7,717	20,563
May		31,856	43,525	7,502	18,219
Jun		29,209	42,016	5,895	17,337
Jul		32,459	39,019	4,428	18,134
Aug		37,376	37,205	4,969	19,375
Sep		48,551	38,014	8,788	21,417
Oct		52,455	39,193	12,489	25,106
Nov		53,362	38,788	13,126	25,123
Dec		49,487	32,127	11,827	23,484
Total Vegetables					
Jan		223,783	334,537	151,877	79,679
Feb		216,262	305,644	130,216	75,852
Mar		201,981	283,480	108,664	82,903
Apr		177,653	259,352	92,970	73,033
May		163,296	230,402	72,788	67,391
Jun		169,786	211,981	57,073	71,387
Jul		203,257	243,482	69,760	79,127
Aug		238,229	336,860	157,162	87,721
Sep		265,790	392,232	237,532	94,087
Oct		264,368	404,840	222,058	99,709
Nov		269,059	388,963	188,028	95,548
Dec		252,552	313,643	183,056	88,416



**Frozen Vegetables: Stocks in Cold Storage by Region  
and United States, Monthly, 2006<sup>1</sup> (continued)**

Commodity and Month	Region				
	East South Central	West South Central	Mountain	Pacific	US Total
	<i>1,000 Pounds</i>	<i>1,000 Pounds</i>	<i>1,000 Pounds</i>	<i>1,000 Pounds</i>	<i>1,000 Pounds</i>
Other Vegetables					
Jan		28,778	11,412	171,000	328,530
Feb		26,446	11,803	160,461	319,127
Mar		35,645	11,382	143,283	309,714
Apr		32,289	10,936	132,575	285,702
May		32,526	10,218	119,273	263,119
Jun		23,121	10,575	110,238	238,391
Jul		21,703	11,335	120,283	247,361
Aug		21,380	11,265	134,367	265,937
Sep		28,954	12,240	147,010	304,974
Oct		32,479	14,296	171,395	347,413
Nov		41,854	14,898	168,381	355,532
Dec		34,227	15,858	156,239	323,249
Total Vegetables					
Jan		147,780	43,967	1,066,518	2,048,141
Feb		146,903	45,344	949,501	1,869,722
Mar		151,987	41,823	840,366	1,711,204
Apr		148,342	39,115	761,320	1,551,785
May		143,098	37,604	655,064	1,369,643
Jun		136,619	33,444	732,597	1,412,887
Jul		143,030	32,753	882,953	1,654,362
Aug		131,655	50,087	1,083,122	2,084,836
Sep		131,390	59,926	1,295,616	2,476,573
Oct		132,987	59,516	1,408,765	2,592,243
Nov		136,083	56,070	1,349,931	2,483,682
Dec		127,769	49,111	1,210,804	2,225,351

<sup>1</sup> New England combined with Middle Atlantic. East South Central combined with South Atlantic.

**Potatoes: Stocks in Cold Storage by Region  
and United States, Monthly, 2006**

Commodity and Month	Region				
	New England	Middle Atlantic	East North Central	West North Central	South Atlantic
	<i>1,000 Pounds</i>	<i>1,000 Pounds</i>	<i>1,000 Pounds</i>	<i>1,000 Pounds</i>	<i>1,000 Pounds</i>
French Fries					
Jan	30,535	20,143	59,351	116,855	18,627
Feb	33,274	21,332	57,853	118,413	18,206
Mar	34,674	20,594	72,077	103,332	18,782
Apr	34,709	20,006	69,694	105,117	18,977
May	32,414	18,198	61,866	90,776	21,795
Jun	34,998	18,915	67,200	109,820	20,404
Jul	36,455	17,538	54,255	83,221	17,246
Aug	28,692	16,028	53,166	81,138	16,331
Sep	32,816	16,716	62,887	90,067	18,623
Oct	32,820	16,778	65,594	90,301	18,401
Nov	33,773	18,245	63,345	90,557	20,130
Dec	33,811	15,199	52,268	83,615	17,303
Other Potatoes					
Jan	5,749	10,567	29,815	7,462	2,042
Feb	5,860	8,959	28,504	7,492	2,175
Mar	5,958	8,491	30,285	7,062	2,458
Apr	6,197	8,384	47,529	7,353	2,664
May	7,839	7,777	32,652	7,155	2,825
Jun	7,726	8,203	34,114	8,453	2,381
Jul	7,084	8,646	29,872	7,970	2,234
Aug	5,394	9,150	27,409	6,890	1,914
Sep	5,793	8,364	29,635	7,325	1,210
Oct	5,826	8,614	29,743	7,171	1,837
Nov	6,734	8,327	27,269	7,206	1,482
Dec	7,685	7,825	25,685	6,820	1,880
Total Potatoes					
Jan	36,284	30,710	89,166	124,317	20,669
Feb	39,134	30,291	86,357	125,905	20,381
Mar	40,632	29,085	102,362	110,394	21,240
Apr	40,906	28,390	117,223	112,470	21,641
May	40,253	25,975	94,518	97,931	24,620
Jun	42,724	27,118	101,314	118,273	22,785
Jul	43,539	26,184	84,127	91,191	19,480
Aug	34,086	25,178	80,575	88,028	18,245
Sep	38,609	25,080	92,522	97,392	19,833
Oct	38,646	25,392	95,337	97,472	20,238
Nov	40,507	26,572	90,614	97,763	21,612
Dec	41,496	23,024	77,953	90,435	19,183

**Potatoes: Stocks in Cold Storage by Region  
and United States, Monthly, 2006 (continued)**

Commodity and Month	Region				
	East South Central	West South Central	Mountain	Pacific	US Total
	<i>1,000 Pounds</i>	<i>1,000 Pounds</i>	<i>1,000 Pounds</i>	<i>1,000 Pounds</i>	<i>1,000 Pounds</i>
French Fries					
Jan	6,634	21,165	177,351	404,794	855,455
Feb	7,290	17,596	180,255	464,403	918,622
Mar	7,161	16,290	185,819	471,108	929,837
Apr	6,876	15,160	182,069	470,741	923,349
May	7,354	18,333	167,834	443,260	861,830
Jun	6,667	16,635	180,420	422,341	877,400
Jul	5,715	17,054	162,312	381,315	775,111
Aug	7,210	14,989	151,260	396,276	765,090
Sep	7,278	16,392	168,184	395,236	808,199
Oct	7,602	16,527	187,784	423,798	859,605
Nov	7,928	16,331	172,191	421,697	844,197
Dec	6,644	18,946	158,305	372,163	758,254
Other Potatoes					
Jan	2,211	21,764	53,426	87,730	220,766
Feb	1,870	23,485	52,412	97,637	228,394
Mar	1,994	23,540	50,783	98,477	229,048
Apr	1,964	25,219	51,012	102,975	253,297
May	2,416	25,068	54,908	102,423	243,063
Jun	2,228	24,859	57,885	84,862	230,711
Jul	2,526	22,450	59,897	80,615	221,294
Aug	1,745	20,861	46,631	79,055	199,049
Sep	1,756	20,976	48,432	77,919	201,410
Oct	1,848	20,128	53,004	78,823	206,994
Nov	2,192	21,575	53,508	79,656	207,949
Dec	1,473	23,246	52,970	68,982	196,566
Total Potatoes					
Jan	8,845	42,929	230,777	492,524	1,076,221
Feb	9,160	41,081	232,667	562,040	1,147,016
Mar	9,155	39,830	236,602	569,585	1,158,885
Apr	8,840	40,379	233,081	573,716	1,176,646
May	9,770	43,401	222,742	545,683	1,104,893
Jun	8,895	41,494	238,305	507,203	1,108,111
Jul	8,241	39,504	222,209	461,930	996,405
Aug	8,955	35,850	197,891	475,331	964,139
Sep	9,034	37,368	216,616	473,155	1,009,609
Oct	9,450	36,655	240,788	502,621	1,066,599
Nov	10,120	37,906	225,699	501,353	1,052,146
Dec	8,117	42,192	211,275	441,145	954,820

**Beef: Stocks in Cold Storage by Region  
and United States, Monthly, 2006**

Commodity and Month	Region				
	New England	Middle Atlantic	East North Central	West North Central	South Atlantic
	<i>1,000 Pounds</i>	<i>1,000 Pounds</i>	<i>1,000 Pounds</i>	<i>1,000 Pounds</i>	<i>1,000 Pounds</i>
Boneless <sup>1</sup>					
Jan	1,402	47,915	47,256	120,635	36,986
Feb	1,319	53,494	39,780	113,690	34,975
Mar	1,324	53,612	35,499	118,026	31,228
Apr	1,332	53,598	37,099	113,269	31,834
May	1,372	53,626	38,315	117,913	32,272
Jun	1,410	48,000	38,383	119,660	32,532
Jul	1,509	52,113	44,133	131,206	32,285
Aug	1,495	50,142	40,668	130,734	33,405
Sep	1,536	47,318	47,056	136,152	34,667
Oct	1,518	44,426	48,905	136,242	31,494
Nov	1,473	48,107	54,293	140,538	39,404
Dec	1,542	43,235	48,032	130,299	31,462
Beef Cuts <sup>2</sup>					
Jan	288	1,526	6,551	20,573	4,518
Feb	327	1,418	6,003	19,212	4,071
Mar	319	1,174	4,290	15,850	3,211
Apr	270	1,200	4,383	19,011	3,281
May	231	1,078	4,085	15,554	2,614
Jun	236	1,015	2,890	16,395	2,384
Jul	208	1,206	3,307	16,904	2,030
Aug	267	2,316	3,143	22,848	2,070
Sep	261	1,256	3,179	23,556	2,414
Oct	188	1,261	5,522	23,014	3,306
Nov	191	1,341	6,351	24,310	3,623
Dec	201	1,471	7,813	30,372	2,617
Total Beef					
Jan	1,690	49,441	53,807	141,208	41,504
Feb	1,646	54,912	45,783	132,902	39,046
Mar	1,643	54,786	39,789	133,876	34,439
Apr	1,602	54,798	41,482	132,280	35,115
May	1,603	54,704	42,400	133,467	34,886
Jun	1,646	49,015	41,273	136,055	34,916
Jul	1,717	53,319	47,440	148,110	34,315
Aug	1,762	52,458	43,811	153,582	35,475
Sep	1,797	48,574	50,235	159,708	37,081
Oct	1,706	45,687	54,427	159,256	34,800
Nov	1,664	49,448	60,644	164,848	43,027
Dec	1,743	44,706	55,845	160,671	34,079
Beef (Govt Owned)					
Jan					
Feb					
Mar					
Apr					
May					
Jun					
Jul					
Aug					
Sep					
Oct					
Nov					
Dec					

See footnote(s) at end of table.

--continued

**Beef: Stocks in Cold Storage by Region and  
United States, Monthly, 2006 (continued)**

Commodity and Month	Region				
	East South Central	West South Central	Mountain	Pacific	US Total
	<i>1,000 Pounds</i>	<i>1,000 Pounds</i>	<i>1,000 Pounds</i>	<i>1,000 Pounds</i>	<i>1,000 Pounds</i>
Boneless <sup>1</sup>					
Jan	7,392	79,061	10,241	53,052	403,940
Feb	6,311	77,707	7,228	49,004	383,508
Mar	5,741	79,104	8,183	51,774	384,491
Apr	6,043	84,265	8,580	51,720	387,740
May	6,076	90,829	9,658	48,849	398,910
Jun	6,101	94,927	9,409	50,899	401,321
Jul	6,308	95,891	9,220	55,167	427,832
Aug	4,030	91,220	8,936	58,763	419,393
Sep	3,471	84,447	8,937	63,360	426,944
Oct	3,612	78,757	9,563	64,159	418,676
Nov	3,666	81,357	11,368	69,155	449,361
Dec	3,422	82,780	9,879	60,914	411,565
Beef Cuts <sup>2</sup>					
Jan	1,670	7,817	10,125	8,874	61,942
Feb	2,303	6,992	8,288	8,442	57,056
Mar	1,500	7,242	7,821	10,259	51,666
Apr	1,750	6,691	7,485	9,455	53,526
May	1,477	6,234	7,115	8,981	47,369
Jun	1,505	6,647	8,547	8,172	47,791
Jul	2,106	7,150	9,511	8,964	51,386
Aug	2,381	8,235	11,616	12,226	65,102
Sep	2,477	8,788	11,655	11,386	64,972
Oct	2,482	9,082	12,333	9,849	67,037
Nov	1,650	8,456	13,431	11,611	70,964
Dec	1,061	8,362	9,858	8,759	70,514
Total Beef					
Jan	9,062	86,878	20,366	61,926	465,882
Feb	8,614	84,699	15,516	57,446	440,564
Mar	7,241	86,346	16,004	62,033	436,157
Apr	7,793	90,956	16,065	61,175	441,266
May	7,553	97,063	16,773	57,830	446,279
Jun	7,606	101,574	17,956	59,071	449,112
Jul	8,414	103,041	18,731	64,131	479,218
Aug	6,411	99,455	20,552	70,989	484,495
Sep	5,948	93,235	20,592	74,746	491,916
Oct	6,094	87,839	21,896	74,008	485,713
Nov	5,316	89,813	24,799	80,766	520,325
Dec	4,483	91,142	19,737	69,673	482,079
Beef (Govt Owned)					
Jan					5,931
Feb					3,987
Mar					3,801
Apr					3,876
May					3,301
Jun					3,038
Jul					6,116
Aug					3,810
Sep					1,931
Oct					1,686
Nov					1,947
Dec					2,018

See footnote(s) at end of table.

--continued

**Pork: Stocks in Cold Storage  
United States, Monthly, 2006**

Commodity and Month	U.S. Total	Commodity and Month	U.S. Total
	<i>1,000 Pounds</i>		<i>1,000 Pounds</i>
Picnics, Bone-in		Bellies	
Jan	11,680	Jan	54,902
Feb	8,967	Feb	58,861
Mar	11,640	Mar	61,628
Apr	10,711	Apr	62,665
May	9,126	May	58,803
Jun	7,305	Jun	46,056
Jul	8,276	Jul	30,506
Aug	9,381	Aug	11,962
Sep	12,640	Sep	10,199
Oct	11,831	Oct	15,597
Nov	11,978	Nov	30,553
Dec	8,860	Dec	41,917
Hams		Loins	
Bone-in		Bone-in	
Jan	42,024	Jan	28,925
Feb	50,505	Feb	24,987
Mar	34,049	Mar	17,936
Apr	42,848	Apr	18,990
May	46,302	May	16,407
Jun	51,665	Jun	13,009
Jul	59,453	Jul	11,184
Aug	71,113	Aug	11,617
Sep	73,591	Sep	14,094
Oct	71,382	Oct	18,900
Nov	41,015	Nov	15,496
Dec	22,610	Dec	14,751
Boneless <sup>3</sup>		Boneless <sup>4</sup>	
Jan	25,243	Jan	22,954
Feb	28,569	Feb	21,507
Mar	23,219	Mar	19,856
Apr	26,787	Apr	22,038
May	26,402	May	16,367
Jun	27,182	Jun	15,067
Jul	30,818	Jul	13,731
Aug	35,515	Aug	12,778
Sep	39,734	Sep	15,674
Oct	40,033	Oct	16,840
Nov	24,244	Nov	22,610
Dec	17,072	Dec	23,651
Total Hams		Total Loins	
Jan	67,267	Jan	51,879
Feb	79,074	Feb	46,494
Mar	57,268	Mar	37,792
Apr	69,635	Apr	41,028
May	72,704	May	32,774
Jun	78,847	Jun	28,076
Jul	90,271	Jul	24,915
Aug	106,628	Aug	24,395
Sep	113,325	Sep	29,768
Oct	111,415	Oct	35,740
Nov	65,259	Nov	38,106
Dec	39,682	Dec	38,402

See footnote(s) at end of table.

--continued

**Stocks in Cold Storage: By Commodity,  
United States, 2005\***

Year and Month	United States		
	Bellies	Total Frozen Pork	Total Meat
	<i>1,000 Pounds</i>	<i>1,000 Pounds</i>	<i>1,000 Pounds</i>
2005			
January	61,528	496,792	964,957
February	72,324	538,221	953,174
March	77,718	540,231	928,036
April	88,367	562,810	908,520
May	80,033	511,226	846,968
June	66,775	488,612	847,777
July	45,254	442,923	850,795
August	16,175	408,494	842,920
September	8,094	425,550	884,909
October	9,421	440,686	900,138
November	22,490	431,283	882,087
December	40,707	421,311	877,155

\* Revised, based on updated plant information.

**Pork: Stocks in Cold Storage by Region and United States, Monthly, 2006**

Commodity and Month	Region				
	New England	Middle Atlantic	East North Central	West North Central	South Atlantic
	<i>1,000 Pounds</i>	<i>1,000 Pounds</i>	<i>1,000 Pounds</i>	<i>1,000 Pounds</i>	<i>1,000 Pounds</i>
Ribs <sup>5</sup>					
Jan	420	693	20,638	49,614	12,993
Feb	385	832	21,458	48,292	11,663
Mar	362	1,813	24,119	39,869	12,278
Apr	404	2,052	25,901	39,013	12,219
May	381	2,875	20,665	32,969	10,395
Jun	336	1,793	15,912	24,026	7,501
Jul	351	1,612	14,157	22,433	6,179
Aug	335	1,595	11,303	21,011	6,487
Sep	347	1,752	11,829	24,109	6,839
Oct	364	1,262	16,261	33,166	7,568
Nov	383	1,447	16,624	44,235	8,253
Dec	417	1,177	21,783	45,354	8,941
Butts					
Jan					
Feb					
Mar					
Apr					
May					
Jun					
Jul					
Aug					
Sep					
Oct					
Nov					
Dec					
Trimmings <sup>6</sup>					
Jan	31	113	10,335	33,356	2,926
Feb	33	567	10,134	34,596	2,785
Mar	31	605	11,214	30,890	2,450
Apr	30	459	9,984	28,660	2,428
May		314	7,033	22,974	1,453
Jun		502	7,918	16,845	1,006
Jul		599	9,450	17,442	1,156
Aug		824	9,010	18,292	1,180
Sep	32	604	9,748	21,723	1,145
Oct		450	9,373	20,363	878
Nov		1,646	8,434	22,833	1,192
Dec		1,722	10,741	25,616	1,156
Other Pork <sup>7</sup>					
Jan	8,058	533	20,594	47,466	10,467
Feb	7,444	517	20,553	50,717	10,942
Mar	5,563	531	27,316	45,698	9,435
Apr	5,482	468	28,154	43,387	8,992
May	4,025	342	28,224	42,903	9,827
Jun	2,946	342	24,988	34,938	8,976
Jul	5,993	428	24,942	40,764	8,838
Aug	4,974	462	28,526	40,098	9,518
Sep	6,143	398	28,194	46,345	11,139
Oct	6,143	424	31,206	53,351	11,429
Nov	6,837	281	28,476	54,689	10,912
Dec	5,342	288	29,222	49,694	8,624

See footnote(s) at end of table.

--continued



**Pork: Stocks in Cold Storage by Region and United States, Monthly, 2006 (continued)**

Commodity and Month	Region				
	East South Central	West South Central	Mountain	Pacific	US Total
	<i>1,000 Pounds</i>	<i>1,000 Pounds</i>	<i>1,000 Pounds</i>	<i>1,000 Pounds</i>	<i>1,000 Pounds</i>
Ribs <sup>5</sup>					
Jan	3,122	3,897	512	937	92,826
Feb	2,607	3,680	442	918	90,277
Mar	2,664	3,939	468	1,167	86,679
Apr	2,970	4,206	418	1,158	88,341
May	2,508	3,499	344	1,148	74,784
Jun	1,928	2,395	164	1,081	55,136
Jul	2,169	5,118	134	1,146	53,299
Aug	2,060	5,998	21	887	49,697
Sep	2,527	7,252	3	1,425	56,083
Oct	2,564	6,115	4	889	68,193
Nov	2,306	4,034	101	1,183	78,566
Dec	1,706	3,919	211	1,161	84,669
Butts					
Jan					14,405
Feb					14,099
Mar					13,314
Apr					12,857
May					9,680
Jun					6,648
Jul					8,460
Aug					7,912
Sep					10,748
Oct					11,272
Nov					11,732
Dec					11,180
Trimmings <sup>6</sup>					
Jan	812	3,937	563	1,552	53,625
Feb	1,093	4,743	564	1,686	56,201
Mar	1,180	4,505	511	1,725	53,111
Apr	1,245	4,440	512	2,337	50,095
May	1,347	4,573	90	1,523	39,307
Jun	501	2,940	84	1,261	31,057
Jul	518	2,987	85	1,338	33,575
Aug	453	3,157	89	1,068	34,073
Sep	517	2,877	3	1,089	37,738
Oct	456	2,767	6	1,099	35,392
Nov	509	4,490	3	1,302	40,409
Dec	635	3,529	4	456	43,859
Other Pork <sup>7</sup>					
Jan	2,788	2,581	259	1,228	93,974
Feb	3,208	2,343	216	1,533	97,473
Mar	3,275	2,227	167	1,461	95,673
Apr	2,982	2,712	157	1,529	93,863
May	2,482	2,257	186	1,537	91,783
Jun	2,085	1,936	269	1,621	78,101
Jul	2,393	1,822	263	2,090	87,533
Aug	2,441	2,104	241	2,219	90,583
Sep	2,607	2,244	322	2,179	99,571
Oct	2,986	3,300	310	2,082	111,231
Nov	2,811	2,619	288	1,735	108,648
Dec	2,503	2,623	237	610	99,143

See footnote(s) at end of table.

--continued

**Pork: Stocks in Cold Storage by Region and  
United States, Monthly, 2006**

Commodity and Month	Region				
	New England	Middle Atlantic	East North Central	West North Central	South Atlantic
	<i>1,000 Pounds</i>	<i>1,000 Pounds</i>	<i>1,000 Pounds</i>	<i>1,000 Pounds</i>	<i>1,000 Pounds</i>
Variety Meats <sup>8</sup>					
Jan					
Feb					
Mar					
Apr					
May					
Jun					
Jul					
Aug					
Sep					
Oct					
Nov					
Dec					
Unclassified <sup>9</sup>					
Jan					
Feb					
Mar					
Apr					
May					
Jun					
Jul					
Aug					
Sep					
Oct					
Nov					
Dec					
Total Frozen Pork					
Jan					
Feb					
Mar					
Apr					
May					
Jun					
Jul					
Aug					
Sep					
Oct					
Nov					
Dec					
Pork (Govt Owned)					
Jan					
Feb					
Mar					
Apr					
May					
Jun					
Jul					
Aug					
Sep					
Oct					
Nov					
Dec					

See footnote(s) at end of table.

--continued

**Pork: Stocks in Cold Storage by Region and  
United States, Monthly, 2006 (continued)**

Commodity and Month	Region				
	East South Central	West South Central	Mountain	Pacific	US Total
	<i>1,000 Pounds</i>	<i>1,000 Pounds</i>	<i>1,000 Pounds</i>	<i>1,000 Pounds</i>	<i>1,000 Pounds</i>
Variety Meats <sup>8</sup>					
Jan					27,104
Feb					24,278
Mar					26,842
Apr					29,262
May					27,707
Jun					33,104
Jul					37,086
Aug					35,628
Sep					42,003
Oct					42,078
Nov					38,472
Dec					32,865
Unclassified <sup>9</sup>					
Jan					60,015
Feb					52,527
Mar					61,031
Apr					61,565
May					60,337
Jun					48,292
Jul					43,848
Aug					45,304
Sep					46,284
Oct					45,660
Nov					44,753
Dec					41,924
Total Frozen Pork					
Jan					527,677
Feb					528,251
Mar					504,978
Apr					520,022
May					477,005
Jun					412,622
Jul					417,769
Aug					415,563
Sep					458,359
Oct					488,409
Nov					468,476
Dec					442,501
Pork (Govt Owned)					
Jan					1,121
Feb					1,621
Mar					1,056
Apr					864
May					693
Jun					622
Jul					888
Aug					1,313
Sep					1,430
Oct					1,060
Nov					240
Dec					913

See footnote(s) at end of table.

--continued

**Other Meat: Stocks in Cold Storage by Region and  
United States, Monthly, 2006**

Commodity and Month	Region				
	New England	Middle Atlantic	East North Central	West North Central	South Atlantic
	<i>1,000 Pounds</i>	<i>1,000 Pounds</i>	<i>1,000 Pounds</i>	<i>1,000 Pounds</i>	<i>1,000 Pounds</i>
Veal					
Jan		871	543	47	49
Feb		1,092	413	3	33
Mar	12	1,057	418	1	95
Apr	12	851	429	1	46
May	12	820	412	11	32
Jun		1,336	1,256	1	52
Jul		1,320	787	22	98
Aug		1,014	996	40	24
Sep		1,309	1,266	25	30
Oct		1,292	1,522	22	28
Nov		1,684	1,913	182	28
Dec		2,180	2,222	180	24
Lamb and Mutton					
Jan		7,162	1,516	33	176
Feb		7,192	1,485	59	102
Mar		6,760	1,476	57	119
Apr		6,376	1,328	55	92
May		5,895	1,418	56	114
Jun		5,787	1,326	73	124
Jul		5,891	1,460	36	65
Aug		5,990	1,496	35	45
Sep		5,666	1,637	34	144
Oct		5,913	1,507	327	76
Nov		6,510	1,312	307	54
Dec		6,337	1,138	205	52
Total Other Meat					
Jan		8,033	2,059	80	225
Feb		8,284	1,898	62	135
Mar	12	7,817	1,894	58	214
Apr	12	7,227	1,757	56	138
May	12	6,715	1,830	67	146
Jun		7,123	2,582	74	176
Jul		7,211	2,247	58	163
Aug		7,004	2,492	75	69
Sep		6,975	2,903	59	174
Oct		7,205	3,029	349	104
Nov		8,194	3,225	489	82
Dec		8,517	3,360	385	76

See footnote(s) at end of table.

--continued

**Other Meat: Stocks in Cold Storage by Region and  
United States, Monthly, 2006 (continued)**

Commodity and Month	Region				
	East South Central	West South Central	Mountain	Pacific	US Total
	<i>1,000 Pounds</i>	<i>1,000 Pounds</i>	<i>1,000 Pounds</i>	<i>1,000 Pounds</i>	<i>1,000 Pounds</i>
Veal					
Jan		315		1,254	3,079
Feb		113		1,098	2,752
Mar		125		1,455	3,163
Apr		102		1,129	2,570
May		182		804	2,273
Jun		512		856	4,013
Jul		391		680	3,298
Aug		124		583	2,781
Sep		238		1,030	3,898
Oct		449		1,097	4,410
Nov		891		516	5,214
Dec		959		703	6,268
Lamb and Mutton					
Jan	3	312	62	6,466	15,730
Feb		387	83	6,469	15,777
Mar	4	265	69	6,704	15,454
Apr	5	370	74	6,947	15,247
May	5	433	46	7,248	15,215
Jun	4	414	55	7,343	15,126
Jul	4	584	62	7,152	15,254
Aug		718	148	6,921	15,353
Sep		555	112	7,080	15,228
Oct		524	38	7,067	15,452
Nov		473	76	7,130	15,862
Dec	8	463	49	7,517	15,769
Total Other Meat					
Jan	3	627	62	7,720	18,809
Feb		500	83	7,567	18,529
Mar	4	390	69	8,159	18,617
Apr	5	472	74	8,076	17,817
May	5	615	46	8,052	17,488
Jun	4	926	55	8,199	19,139
Jul	4	975	62	7,832	18,552
Aug		842	148	7,504	18,134
Sep		793	112	8,110	19,126
Oct		973	38	8,164	19,862
Nov		1,364	76	7,646	21,076
Dec	8	1,422	49	8,220	22,037

See footnote(s) at end of table.

--continued

**Canned and Total Meat: Stocks in Cold Storage by Region and United States, Monthly, 2006**

Commodity and Month	Region				
	New England	Middle Atlantic	East North Central	West North Central	South Atlantic
	<i>1,000 Pounds</i>	<i>1,000 Pounds</i>	<i>1,000 Pounds</i>	<i>1,000 Pounds</i>	<i>1,000 Pounds</i>
Canned Hams					
Jan					
Feb					
Mar					
Apr					
May					
Jun					
Jul					
Aug					
Sep					
Oct					
Nov					
Dec					
Other Canned					
Jan					
Feb					
Mar					
Apr					
May					
Jun					
Jul					
Aug					
Sep					
Oct					
Nov					
Dec					
Total Canned					
Jan					
Feb					
Mar					
Apr					
May					
Jun					
Jul					
Aug					
Sep					
Oct					
Nov					
Dec					
Total Meat					
Jan					
Feb					
Mar					
Apr					
May					
Jun					
Jul					
Aug					
Sep					
Oct					
Nov					
Dec					

**Canned and Total Meat: Stocks in Cold Storage by Region and United States, Monthly, 2006 (continued)**

Commodity and Month	Region				
	East South Central	West South Central	Mountain	Pacific	US Total
	<i>1,000 Pounds</i>	<i>1,000 Pounds</i>	<i>1,000 Pounds</i>	<i>1,000 Pounds</i>	<i>1,000 Pounds</i>
Canned Hams					
Jan					2,495
Feb					2,349
Mar					1,640
Apr					1,548
May					1,563
Jun					1,609
Jul					1,655
Aug					1,591
Sep					1,496
Oct					1,900
Nov					1,336
Dec					1,324
Other Canned					
Jan					2,962
Feb					3,367
Mar					3,744
Apr					3,647
May					4,243
Jun					4,337
Jul					3,768
Aug					2,559
Sep					1,219
Oct					1,863
Nov					2,540
Dec					2,950
Total Canned					
Jan					5,457
Feb					5,716
Mar					5,384
Apr					5,195
May					5,806
Jun					5,946
Jul					5,423
Aug					4,150
Sep					2,715
Oct					3,763
Nov					3,876
Dec					4,274
Total Meat					
Jan					1,017,825
Feb					993,060
Mar					965,136
Apr					984,300
May					946,578
Jun					886,819
Jul					920,962
Aug					922,342
Sep					972,116
Oct					997,747
Nov					1,013,753
Dec					950,891

<sup>1</sup> Includes all boxed boneless beef, such as ground beef, roasts, steaks, loins, strips, rounds, trimmings, etc. Variety meats (edible offal), such as tongues, livers, hearts, kidneys, and other organs removed from slaughtered beef, are included as miscellaneous freezer stocks.

<sup>2</sup> Includes all boxed primal beef cuts, bone-in.

<sup>3</sup> Includes full ham, bone removed and individual muscles separated.

<sup>4</sup> Includes pork tenderloins.

<sup>5</sup> Includes spareribs and backribs.

<sup>6</sup> Includes 42% regular trimmings, 72% special trimmings, boneless picnic meat, jowls, neckbone trimmings, blade, cheek, head, and shank meat, etc. Packaged bacon, sausage, and processed items, such as hot dogs and luncheon meats, are included in miscellaneous cooler or freezer stocks.

<sup>7</sup> Includes ears, tails, feet, neckbones and snouts.

<sup>8</sup> Includes tongues, kidneys, livers, stomachs, hearts, chitterlings, salivary glands, and other organs removed from slaughtered hogs.

<sup>9</sup> Includes pork unable to be classified elsewhere in this report.

**Miscellaneous Cooler and Freezer: Stocks in Cold Storage,  
United States, Monthly, 2006**

Month	Miscellaneous Commodities		
	Cooler	Freezer	Total
	<i>1,000 Pounds</i>	<i>1,000 Pounds</i>	<i>1,000 Pounds</i>
Jan	794,918	2,056,389	2,851,307
Feb	770,814	1,960,240	2,731,054
Mar	726,997	1,994,545	2,721,542
Apr	745,986	2,017,918	2,763,904
May	648,947	1,972,431	2,621,378
Jun	644,802	2,087,844	2,732,646
Jul	611,846	2,089,525	2,701,371
Aug	697,591	2,047,254	2,744,845
Sep	926,111	2,238,748	3,164,859
Oct	976,880	2,367,125	3,344,005
Nov	776,130	2,368,886	3,145,016
Dec	699,259	2,301,869	3,001,128

**Total Commodities Stored: Stocks in Cold Storage,  
United States, Monthly, 2006**

Month	Total Commodities Stored		
	In Cooler	In Freezer	Total All Commodities
	<i>1,000 Pounds</i>	<i>1,000 Pounds</i>	<i>1,000 Pounds</i>
Jan	6,438,895	9,849,567	16,288,462
Feb	5,673,252	9,611,132	15,284,384
Mar	4,780,447	9,338,431	14,118,878
Apr	4,156,625	9,346,272	13,502,897
May	3,396,152	9,095,010	12,491,162
Jun	2,830,792	9,283,928	12,114,720
Jul	2,397,698	9,494,768	11,892,466
Aug	2,285,280	9,611,663	11,896,943
Sep	5,805,613	10,041,857	15,847,470
Oct	8,688,940	10,466,257	19,155,197
Nov	7,936,822	10,074,871	18,011,693
Dec	7,069,350	9,642,354	16,711,704



**Stocks in Cold Storage: Blackberries, Red Raspberries, and Strawberries by Type of Pack, United States, Monthly, 2006**

Commodity	Month					
	Jan	Feb	Mar	Apr	May	Jun
	<i>1,000 Pounds</i>	<i>1,000 Pounds</i>	<i>1,000 Pounds</i>	<i>1,000 Pounds</i>	<i>1,000 Pounds</i>	<i>1,000 Pounds</i>
<b>Blackberries</b>						
IQF	17,122	16,007	13,945	12,833	11,208	10,221
Pails and Tubs	3,653	3,310	2,367	2,057	1,785	1,770
Barrels, 400 lbs	4,382	4,531	3,209	2,974	2,808	2,393
Concentrate	208	1,569	54	159	24	13
Total	25,365	25,417	19,575	18,023	15,825	14,397
<b>Red Raspberries</b>						
IQF	13,619	14,703	13,909	13,915	14,551	19,313
Pails and Tubs	10,269	8,952	7,576	5,994	5,332	5,443
Barrels, 400 lbs	24,663	20,662	16,143	13,281	9,515	10,076
Concentrate	2,253	2,064	1,844	1,562	1,591	1,740
Total	50,804	46,381	39,472	34,752	30,989	36,572
<b>Strawberries <sup>1</sup></b>						
IQF and Poly	90,540	77,304	60,478	69,671	94,854	135,770
Pails and Tubs	70,223	55,022	42,567	39,281	70,727	144,724
Barrels and Drums	25,373	20,088	16,134	16,442	35,418	74,891
Juice Stock	7,188	7,133	8,478	23,539	26,984	27,018
Total	193,324	159,547	127,657	148,933	227,983	382,403
	<b>Jul</b>	<b>Aug</b>	<b>Sep</b>	<b>Oct</b>	<b>Nov</b>	<b>Dec</b>
	<i>1,000 Pounds</i>	<i>1,000 Pounds</i>	<i>1,000 Pounds</i>	<i>1,000 Pounds</i>	<i>1,000 Pounds</i>	<i>1,000 Pounds</i>
<b>Blackberries</b>						
IQF	21,165	19,796	19,539	19,900	19,091	18,616
Pails and Tubs	5,601	7,448	6,696	6,201	5,448	5,039
Barrels, 400 lbs	5,082	4,902	5,042	4,299	3,630	2,940
Concentrate	60	18	49	128	141	148
Total	31,908	32,164	31,326	30,528	28,310	26,743
<b>Red Raspberries</b>						
IQF	36,666	31,423	24,780	22,467	20,830	19,958
Pails and Tubs	12,496	16,089	11,855	11,850	10,068	8,784
Barrels, 400 lbs	35,421	30,341	26,201	24,359	23,553	21,424
Concentrate	1,328	1,140	1,623	1,936	2,035	2,042
Total	85,911	78,993	64,459	60,612	56,486	52,208
<b>Strawberries <sup>1</sup></b>						
IQF and Poly	164,542	139,696	104,049	92,346	84,728	72,481
Pails and Tubs	140,077	131,612	119,490	106,581	97,721	88,282
Barrels and Drums	70,338	59,790	54,152	47,275	36,991	32,379
Juice Stock	25,768	26,091	17,019	14,287	12,912	9,333
Total	400,725	357,189	294,710	260,489	232,352	202,475

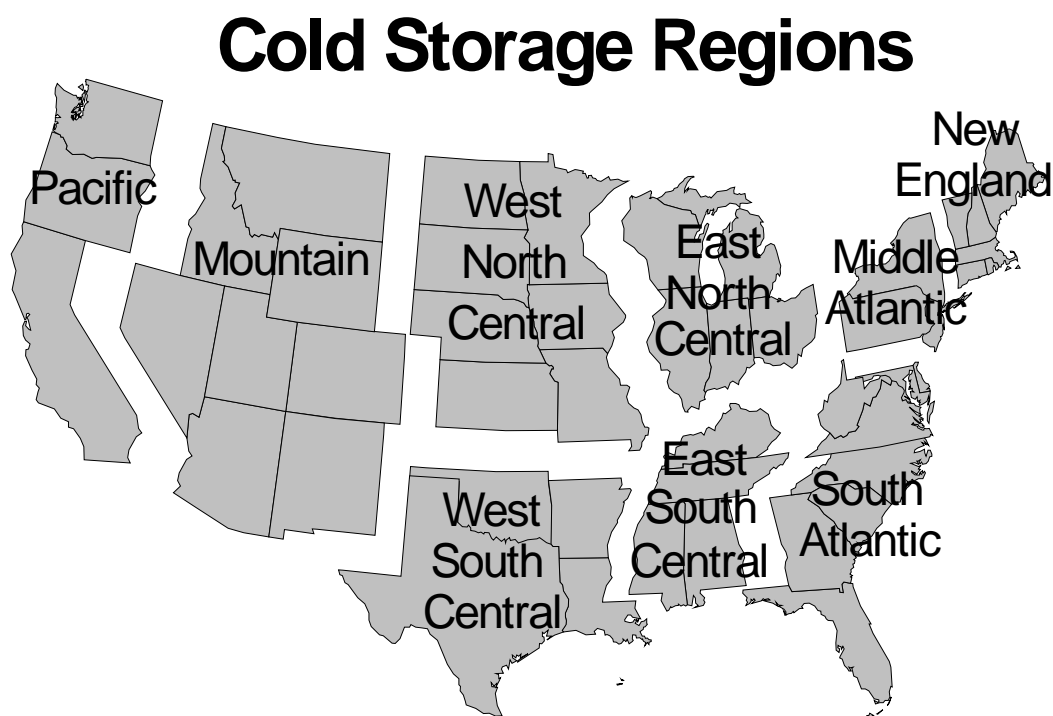
<sup>1</sup> Data by type of pack discontinued after March 2001.

## Methodology and Definitions

Data in this report are end-of-month regional and US totals of various food commodities stored in cold storage warehouses. Some figures have been revised from those published in the monthly "**Cold Storage**" report, primarily due to late reports or reporting and tabulation errors. Occasionally, new firms or established firms who have not been responding to our request for information, begin to report. This may cause a shift in the data which is due to the change in the number of plants reporting rather than an actual change in the level of stocks reported.

Data are collected monthly from warehouses artificially cooled to a temperature of 50 degrees Fahrenheit or lower, and whose food products are normally stored for 30 days or more. All food items in these facilities are reported regardless of the number of days stored at the time of the report. Also included are specialized storage facilities meeting the 30 day requirement, such as fruit houses, dairy manufacturing plants, frozen fruit, fruit juice, and vegetable processors, and poultry and meat packing plants. Excluded are stocks in space maintained by wholesalers, jobbers, distributors, chain stores, locker plants containing individual lockers, meat packer branch houses, and frozen food processors whose entire inventories are turned over more than once a month.

Government owned stocks are food products held by the Commodity Credit Corporation, Armed Forces, and other government agencies, including State and local governments. Food held in refrigerated space owned, leased, or operated by the Armed Services is not reported.



## Information Contacts

Listed below are the commodity specialists in the Livestock Branch of the National Agricultural Statistics Service to contact for additional information.

Dan Kerestes, Chief, Livestock Branch ..... (202) 720-3570

Darin Jantzi, Head, Poultry and Specialty Commodities Section ..... (202) 720-3570

Mark Aitken - Layers, Eggs ..... (202) 690-8632

David Colwell - Cold Storage ..... (202) 720-8784

Fleming Gibson - Egg Products, Poultry Slaughter, Catfish Processing, Mink,  
Turkey Hatchery, Turkeys Raised ..... (202) 690-3237

Sharyn Lavender - Broiler Hatchery, Chicken Hatchery, Honey ..... (202) 720-3244

Toby Paterson - Catfish Production, Trout Production, Census of Aquaculture ..... (202) 720-0585

## ACCESS TO REPORTS!!

---

For your convenience, there are several ways to obtain NASS reports, data products, and services:

### INTERNET ACCESS

All NASS reports are available free of charge on the worldwide Internet. For access, connect to the Internet and go to the NASS Home Page at: [www.nass.usda.gov](http://www.nass.usda.gov).

### E-MAIL SUBSCRIPTION

All NASS reports are available by subscription free of charge direct to your e-mail address. Starting with the NASS Home Page at [www.nass.usda.gov](http://www.nass.usda.gov), under the right navigation, *Receive reports by Email*, click on **National** or **State**. Follow the instructions on the screen.

-----

### PRINTED REPORTS OR DATA PRODUCTS

**CALL OUR TOLL-FREE ORDER DESK: 800-999-6779 (U.S. and Canada)**  
**Other areas, please call 703-605-6220 FAX: 703-605-6900**  
**(Visa, MasterCard, check, or money order acceptable for payment.)**

-----

### ASSISTANCE

For **assistance** with general agricultural statistics or further information about NASS or its products or services, contact the **Agricultural Statistics Hotline** at **800-727-9540**, 7:30 a.m. to 4:00 p.m. ET, or e-mail: [nass@nass.usda.gov](mailto:nass@nass.usda.gov).

The U.S. Department of Agriculture (USDA) prohibits discrimination in all its programs and activities on the basis of race, color, national origin, age, disability, and where applicable, sex, marital status, familial status, parental status, religion, sexual orientation, genetic information, political beliefs, reprisal, or because all or a part of an individual's income is derived from any public assistance program. (Not all prohibited bases apply to all programs.) Persons with disabilities who require alternative means for communication of program information (Braille, large print, audiotape, etc.) should contact USDA's TARGET Center at (202) 720-2600 (voice and TDD).

To file a complaint of discrimination, write to USDA, Director, Office of Civil Rights, 1400 Independence Avenue, S.W., Washington, D.C. 20250-9410, or call (800) 795-3272 (voice) or (202) 720-6382 (TDD). USDA is an equal opportunity provider and employer.