

# DAIRY PRODUCTS



Released: March 1, 1979  
3:00 P.M. ET

Economics, Statistics, &  
Cooperatives Service

U.S. Department  
of Agriculture

Washington, D.C.  
20250

---

## JANUARY HIGHLIGHTS

Butter production was 97.4 million pounds in January, 26 percent more than December but 10 percent less than January 1978.

American type cheese totaled 174 million pounds, 1 percent above last month and 6 percent above a year earlier.

Total cheese output (excluding cottage cheese) was 289 million pounds, down 4 percent from the previous month but up 5 percent from the previous year.

Creamed cottage cheese, 69.0 million pounds, slightly above a year ago.

Lowfat cottage cheese, 11.8 million pounds, 2 percent more than a year earlier.

Canned evaporated and condensed whole milk, 58.0 million pounds, up 3 percent from January 1978.

Frozen desserts: (Comparisons with January 1978)

Ice cream--55.7 million gallons, up 6 percent.

Ice milk--15.5 million gallons, up 10 percent.

Sherbet--3.08 million gallons, up 2 percent.

Dry milk products: (Comparisons with January 1978)

Nonfat dry milk for human food--55.1 million pounds, down 31 percent.

Dry whole milk--7.16 million pounds, up 5 percent.

Dry buttermilk--4.76 million pounds, down 7 percent.

## MANUFACTURING GRADE MILK PRICES DECLINE SEASONALLY

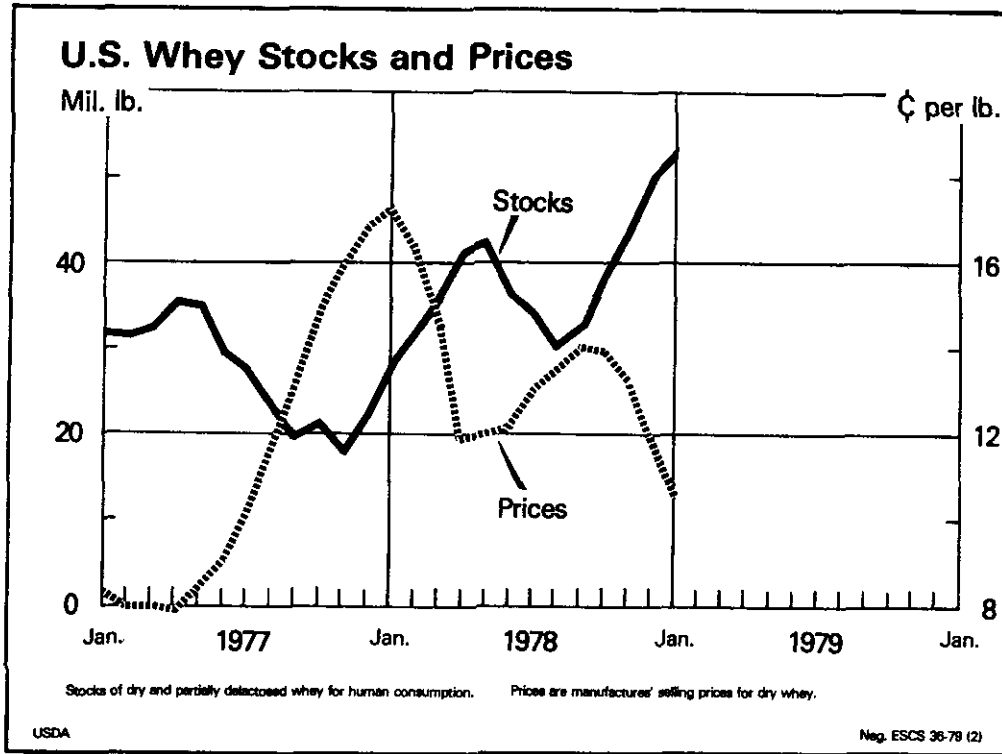
MILK FOR:

Butter-powder, \$10.63, down 17 cents from December but \$1.62 above January 1978.

American cheese, \$10.91, a decrease of 10 cents from the previous month but \$1.76 above the previous year.

Miscellaneous cheese, \$11.04, down 9 cents from December but \$1.75 higher than January 1978.

Evaporated milk (canned), \$10.62, 12 cents above last month, and \$1.70 more than the previous year.



U.S. WHEY STOCKS AND PRICES\*

MONTH	STOCKS			PRICE		
	1977	1978	1979	1977	1978	1979
	(000) POUNDS			CENTS/LB		
JAN	32,142	28,058	52,736	8.4	17.3	10.6
FEB	31,550	31,961		8.0	16.3	
MAR	32,366	35,262		8.0	14.6	
APR	34,957	41,293		7.9	11.9	
MAY	34,666	42,219		8.4	12.0	
JUN	29,775	36,714		9.1	12.2	
JUL	27,889	34,333		10.1	13.0	
AUG	23,508	30,758		11.7	13.6	
SEP	19,868	32,734		13.2	14.0	
OCT	21,537	38,702		14.9	14.0	
NOV	18,377	43,699		15.9	13.3	
DEC	21,845	50,410		16.8	11.9	

\* STOCKS OF DRY AND PARTIALLY DELACTOSED WHEY FOR HUMAN CONSUMPTION. PRICES ARE MANUFACTURERS' SELLING PRICES FOR DRY WHEY.



WHEY AND MODIFIED WHEY PRODUCTS: PRODUCTION, STOCKS,  
AND PRICES, UNITED STATES, JANUARY 1979

PRODUCT	JAN 1978	DEC 1978 <u>1/</u>	JAN 1979	PERCENT OF	
				JAN 1978	DEC 1978
	PRODUCTION 1,000 POUNDS			PERCENT	
CONDENSED WHEY, SOLIDS CONTENT <u>2/</u>					
SWEET-TYPE, HUMAN FOOD	11,226	9,052	10,171	91	112
SWEET-TYPE, ANIMAL FEED	951	1,942	2,146	226	111
ACID-TYPE, HUMAN FOOD AND ANIMAL FEED	831	811	1,144	138	141
DRY WHEY PRODUCTS					
DRY WHEY, HUMAN FOOD	43,683	45,875	45,199	103	99
DRY WHEY, ANIMAL FEED	9,156	12,927	14,956	163	116
PARTIALLY DELACTOSED					
HUMAN FOOD	2,470	3,199	3,480	141	109
ANIMAL FEED	10,624	9,265	8,134	76	88
PARTIALLY DEMINERALIZED					
HUMAN FOOD	2,643	2,700	3,307	125	122
ANIMAL FEED	<u>3/</u>	<u>3/</u>	<u>3/</u>		
PARTIALLY DELACTOSED/DEMINERALIZED, HUMAN FOOD	928	733	506	55	69
PARTIALLY DELACTOSED/DEMINERALIZED, ANIMAL FEED	<u>4/</u>	<u>4/</u>	<u>4/</u>		
LACTOSE, HUMAN FOOD	8,912	8,264	8,340	93	101
LACTOSE, ANIMAL FEED	191	305	291	152	95
WHEY SOLIDS IN WET BLENDS					
HUMAN FOOD	2,094	2,978	3,095	148	104
ANIMAL FEED	5,110	5,081	5,263	103	104
	MANUFACTURERS' STOCKS, END OF MONTH <u>5/</u>			PERCENT	
	1,000 POUNDS				
DRY WHEY PRODUCTS					
DRY WHEY AND PARTIALLY DELACTOSED					
HUMAN FOOD <u>6/</u>	28,058	50,410	52,736	188	105
ANIMAL FEED <u>6/</u>	9,036	32,763	35,293	391	108
PARTIALLY DEMINERALIZED					
HUMAN FOOD	1,988	2,549	3,785	190	148
PARTIALLY DELACTOSED/DEMINERALIZED, HUMAN FOOD	842	1,185	977	116	82
PARTIALLY DELACTOSED/DEMINERALIZED, ANIMAL FEED	<u>4/</u>	<u>4/</u>	<u>4/</u>		
LACTOSE, HUMAN FOOD	5,732	13,234	13,491	235	102
LACTOSE, ANIMAL FEED	<u>4/</u>	<u>4/</u>	<u>4/</u>		
	MANUFACTURERS' SELLING PRICE <u>7/</u>			CENTS CHANGE	
	CENTS PER POUND				
CONDENSED WHEY SOLIDS <u>2/</u>					
SWEET-TYPE, HUMAN FOOD	11.3	6.4	6.5	-4.8	+0.1
SWEET-TYPE, ANIMAL FEED	2.4	4.0	4.0	+1.6	0.0
ACID-TYPE, HUMAN FOOD	<u>3/</u>	<u>3/</u>	<u>3/</u>		
ACID-TYPE, ANIMAL FEED	<u>4/</u>	<u>4/</u>	<u>4/</u>		
DRY WHEY, HUMAN FOOD	17.3	11.9	10.6	-6.7	-1.3
DRY WHEY, ANIMAL FEED	13.3	10.4	9.6	-3.7	-0.8

1/ REVISED. 2/ FINAL MARKETABLE PRODUCT ONLY. DOES NOT INCLUDE QUANTITY USED OR SHIPPED TO ANOTHER PLANT FOR FURTHER PROCESSING INTO DRY WHEY OR MODIFIED WHEY PRODUCTS. 3/ NONE REPORTED. 4/ NOT PUBLISHED TO AVOID DISCLOSURE OF INDIVIDUAL PLANT OPERATIONS. 5/ STOCKS HELD BY MANUFACTURERS AT ALL POINTS AND IN TRANSIT. 6/ DRY WHEY AND PARTIALLY DELACTOSED WHEY STOCKS COMBINED TO AVOID DISCLOSURE OF INDIVIDUAL OPERATIONS. 7/ PRICES FOR BULK GOODS, F.O.B. PLANT. AVERAGE MONTHLY PRICES REPORTED BY FIRMS.

PRODUCTION OF DAIRY PRODUCTS, UNITED STATES, 1977-79

MONTH	BY MONTHS				CUMULATIVE			
	1977	1978	1979	1979 AS % OF 1978	1977	1978	1979	1979 AS % OF 1978
	1,000 POUNDS			PERCENT	1,000 POUNDS			PERCENT
<u>BUTTER</u>								
JAN	105,455	108,336	97,399	90	105,455	108,336	97,399	90
FEB	95,431	95,682			200,886	204,018		
MAR	98,402	97,720			299,288	301,738		
APR	99,946	98,506			399,234	400,244		
MAY	103,180	96,727			502,414	496,971		
JUN	93,019	84,664			595,433	581,635		
JUL	81,762	73,656			677,195	655,291		
AUG	77,803	64,151			754,998	719,442		
SEP	75,033	64,543			830,031	783,985		
OCT	84,547	71,136			914,578	855,121		
NOV	81,528	66,658			996,106	921,779		
DEC	89,489	<u>1/77,249</u>			1,085,595	<u>1/999,028</u>		
<u>AMERICAN CHEESE</u>								
JAN	168,720	163,578	173,819	106	168,720	163,578	173,819	106
FEB	159,125	154,279			327,845	317,857		
MAR	183,500	182,934			511,345	500,791		
APR	194,358	190,839			705,703	691,630		
MAY	212,035	208,207			917,738	899,837		
JUN	201,285	209,299			1,119,023	1,109,136		
JUL	175,220	183,402			1,294,243	1,292,538		
AUG	164,904	167,456			1,459,147	1,459,994		
SEP	141,446	149,231			1,600,593	1,609,225		
OCT	146,245	158,987			1,746,838	1,768,212		
NOV	135,403	153,531			1,882,241	1,921,743		
DEC	160,129	<u>1/171,814</u>			2,042,370	<u>1/2,093,557</u>		
<u>CREAMED COTTAGE CHEESE</u>								
JAN	68,424	68,777	69,040	100	68,424	68,777	69,040	100
FEB	68,893	67,919			137,317	136,696		
MAR	81,522	80,410			218,839	217,106		
APR	75,697	75,478			294,536	292,584		
MAY	78,411	81,112			372,947	373,696		
JUN	77,347	77,505			450,294	451,201		
JUL	74,305	73,240			524,599	524,441		
AUG	77,210	77,225			601,809	601,666		
SEP	73,632	72,221			675,441	673,887		
OCT	69,471	72,017			744,912	745,904		
NOV	69,478	68,195			814,390	814,099		
DEC	63,256	60,900			877,646	874,999		
<u>LOWFAT COTTAGE CHEESE</u>								
JAN	10,945	11,548	11,830	102	10,945	11,548	11,830	102
FEB	10,711	11,174			21,656	22,722		
MAR	13,086	13,999			34,742	36,721		
APR	12,185	12,773			46,927	49,494		
MAY	12,232	13,685			59,159	63,179		
JUN	12,393	13,467			71,552	76,646		
JUL	11,271	12,683			82,823	89,329		
AUG	12,231	13,700			95,054	103,029		
SEP	11,403	12,913			106,457	115,942		
OCT	11,367	12,366			117,824	128,308		
NOV	10,961	11,619			128,785	139,927		
DEC	10,222	10,598			139,007	150,525		

1/ REVISED.

PRODUCTION OF DAIRY PRODUCTS, UNITED STATES, 1977-79

MONTH	BY MONTH				CUMULATIVE			
	1977	1978	1979	1979 AS % OF 1978	1977	1978	1979	1979 AS % OF 1978
	1,000 GALLONS			PERCENT	1,000 GALLONS			PERCENT
<u>ICE CREAM</u>								
JAN	50,928	52,459	55,677	106	50,928	52,459	55,677	106
FEB	55,510	56,472			106,438	108,931		
MAR	73,140	70,735			179,578	179,666		
APR	67,751	65,320			247,329	244,986		
MAY	70,742	72,991			318,071	317,977		
JUN	83,324	85,493			401,395	403,470		
JUL	78,767	80,228			480,162	483,698		
AUG	83,081	84,481			563,243	568,179		
SEP	71,650	73,059			634,893	641,238		
OCT	59,629	64,656			694,522	705,894		
NOV	56,306	58,211			750,828	764,105		
DEC	53,304	52,250			804,132	816,355		
<u>ICE MILK</u>								
JAN	15,138	14,046	15,511	110	15,138	14,046	15,511	110
FEB	16,946	16,332			32,084	30,378		
MAR	24,413	23,872			56,497	54,250		
APR	26,067	25,701			82,564	79,951		
MAY	30,441	30,524			113,005	110,475		
JUN	33,909	34,603			146,914	145,078		
JUL	34,439	33,886			181,353	178,964		
AUG	32,502	33,382			213,855	212,346		
SEP	26,129	25,954			239,984	238,300		
OCT	20,877	22,190			260,861	260,490		
NOV	17,171	18,105			278,032	278,595		
DEC	15,268	15,936			293,300	294,531		
<u>SHERBET</u>								
JAN	2,894	3,012	3,078	102	2,894	3,012	3,078	102
FEB	2,830	2,745			5,724	5,757		
MAR	4,206	4,041			9,930	9,798		
APR	4,211	4,193			14,141	13,991		
MAY	4,903	4,706			19,044	18,697		
JUN	5,928	5,923			24,972	24,620		
JUL	5,697	5,315			30,669	29,935		
AUG	5,716	5,207			36,385	35,142		
SEP	4,281	4,089			40,666	39,231		
OCT	3,210	3,717			43,876	42,948		
NOV	2,961	2,917			46,837	45,865		
DEC	3,133	2,831			49,970	48,696		
<u>MELLORINE-TYPE FROZEN DESSERT</u>								
JAN	1,214	1,174	1,172	100	1,214	1,174	1,172	100
FEB	1,426	1,233			2,640	2,407		
MAR	1,826	1,563			4,466	3,970		
APR	1,625	1,704			6,091	5,674		
MAY	1,802	1,826			7,893	7,500		
JUN	2,079	2,056			9,972	9,556		
JUL	1,838	1,823			11,810	11,379		
AUG	1,944	1,785			13,754	13,164		
SEP	1,619	1,583			15,373	14,747		
OCT	1,289	1,500			16,662	16,247		
NOV	1,156	1,095			17,818	17,342		
DEC	977	961			18,795	18,303		

PRODUCTION OF NONFAT DRY MILK FOR HUMAN FOOD: BY MONTHS, UNITED STATES, 1977-79

MONTH	BY MONTHS				CUMULATIVE			
	1977	1978	1979	1979 AS % OF 1978	1977	1978	1979	1979 AS % OF 1978
	1,000 POUNDS			PERCENT	1,000 POUNDS			PERCENT
JAN	70,259	79,703	55,091	69	70,259	79,703	55,091	69
FEB	71,663	70,617			141,922	150,320		
MAR	87,970	84,431			229,892	234,751		
APR	105,891	96,414			335,783	331,165		
MAY	119,829	103,001			455,612	434,166		
JUN	130,224	113,472			585,836	547,638		
JUL	123,236	98,168			709,072	645,806		
AUG	105,970	78,561			815,042	724,367		
SEP	77,558	59,128			892,600	738,495		
OCT	70,285	48,959			962,885	832,454		
NOV	54,132	41,905			1,028,017	874,359		
DEC	77,954	54,443			1,105,971	928,802		

BUTTER: PRODUCTION BY STATES, JANUARY 1979

STATE	JAN 1977	JAN 1978	DEC 1978	JAN 1979	PERCENT OF	
	1,000 POUNDS				JAN 1978	DEC 1978
					PERCENT	
CALIF	14,651	16,600	10,000	13,000	78	130
IDAHO	688	930	600	660	71	110
ILL	1,119	830	245	265	32	108
IND	1,364	1,224	1,105	1,375	112	124
IOWA	4,841	4,100	1,936	1,921	47	99
KANS	1,738	1,318	1,347	1,378	105	102
KY	1,446	1,216	1,596	1,209	99	76
MICH	2,845	3,000	2,300	2,600	87	113
MINN	16,647	16,025	13,000	14,870	93	114
MO	2,500	2,441	1,970	2,725	112	138
NEBR	1,582	1,355	1,603	1,374	101	86
N Y	3,925	4,325	1,940	3,568	82	184
N DAK	544	623	515	610	98	118
OHIO	3,454	3,442	2,201	2,990	87	136
OKLA	2,789	3,207	2,802	3,330	104	119
OREG	1,205	1,130	1,100	1,350	119	123
PA	2,528	4,205	2,935	4,485	107	153
S DAK	951	918	812	944	103	116
TENN	3,085	2,864	2,453	3,047	106	124
UTAH	630	669	403	705	105	175
VT	974	931	239	860	92	360
WASH	2,945	2,786	2,122	2,628	94	124
WIS	25,403	25,600	18,700	24,400	95	130
OTH STS	7,601	8,597	5,325	7,105	83	133
U S	105,455	108,336	1/77,249	97,399	90	126

1/ REVISED.

AMERICAN CHEESE: PRODUCTION BY STATES, JANUARY 1979

STATE	JAN 1977	JAN 1978	DEC 1978	JAN 1979	PERCENT OF	
					JAN 1978	DEC 1978
1,000 POUNDS					PERCENT	
CALIF	573	1,200	1,350	1,150	96	85
IDAHO	4,937	4,800	5,947	5,297	110	89
ILL	1,794	432	410	400	93	98
IND	1,911	1,655	2,190	2,057	124	94
IOWA	8,445	6,200	7,740	8,255	133	107
KANS	1,819	1,303	1,990	1,511	116	76
KY	3,390	3,151	3,056	2,885	92	94
MICH	1,249	1,620	1,800	1,550	96	86
MINN	34,896	30,500	36,150	38,900	128	108
MO	3,645	4,690	3,700	3,600	77	97
NEBR	2,413	2,750	1,860	1,750	64	94
N Y	6,270	6,601	6,440	7,111	108	110
N DAK	4,072	4,394	3,901	4,150	94	106
OREG	1/	1/	1/	2,350		
S DAK	3,393	3,489	3,653	4,087	117	112
TENN	1,476	1,157	1,723	1,675	145	97
UTAH	3,481	2,954	3,010	2,408	82	80
VT	1,388	1,610	1,776	1,763	110	99
WIS	70,092	70,900	69,000	70,800	100	103
OTH STS	13,476	15,372	17,468	12,120	3/	3/
U S	168,720	163,578	2/ 171,814	173,819	106	101

1/ DATA HELD CONFIDENTIAL IN EARLIER YEARS WILL BE PUBLISHED WITH 1978 ANNUAL DAIRY PRODUCTS SUMMARY.  
 2/ REVISED. 3/ NOT COMPARABLE.

USDA DAIRY SUPPORT PROGRAM ACTIVITIES, UNITED STATES, JANUARY 1979

PRODUCT	CCC PURCHASES (DELIVERY BASIS)				UNCOMMITTED CCC INVENTORIES	
	JAN 1978	JAN 1979	OCT 1 1977 THROUGH JAN 31, 1978	OCT 1, 1978 THROUGH JAN 31, 1979	JAN 31, 1978	JAN 31, 1979 1/
1,000 POUNDS						
BUTTER	25,994	9,264	38,674	9,301	170,187	167,190
CHEESE	1,446	0	3,585	0	45,484	4,478
NONFAT DRY MILK	29,059	3,470	97,791	18,733	645,072	493,618

1/ INCLUDES THE FOLLOWING QUANTITIES IN SPECIAL CONTAINERS OR FORMS AND WHICH WILL LATER BE COMMITTED TO PROGRAM USE: BUTTER IN ONE-POUND PACKAGES, 27,952,000 POUNDS; PROCESSED CHEESE, 4,231,000 POUNDS AND FORTIFIED NONFAT DRY MILK, 34,889,000 POUNDS.



ICE CREAM: PRODUCTION BY STATES, JANUARY 1979

STATE	JAN 1977	JAN 1978	DEC 1978	JAN 1979	PERCENT OF	
	1,000 GALLONS				JAN 1978	DEC 1978
					PERCENT	
ALA	849	794	703	1,010	127	144
ARIZ	479	324	351	461	142	131
CALIF	5,908	5,850	6,150	7,300	125	119
COLO	592	596	537	615	103	115
CONN	821	1,080	1,450	1,150	106	79
FLA	1,849	2,036	2,380	2,180	107	92
GA	424	356	354	401	113	113
ILL	2,920	2,510	2,530	2,470	98	98
IND	1,617	1,870	1,770	1,975	106	112
IOWA	636	610	710	632	104	89
KANS	437	345	314	354	103	113
KY	223	300	293	249	83	85
LA	761	650	495	595	92	120
MD 1/	1,143	1,140	1,190	1,510	132	127
MASS	2,846	2,880	2,870	2,740	95	95
MICH	2,076	2,300	2,350	2,550	111	109
MINN	1,968	1,980	2,290	1,985	100	87
MO	1,129	1,200	950	950	79	100
NEBR	675	530	690	650	123	94
N J	853	637	330	360	57	109
N Y	3,435	3,892	3,915	4,580	118	117
N C	1,566	1,900	1,550	1,770	93	114
OHIO	3,243	3,140	3,140	3,100	99	99
OKLA	507	470	441	553	118	125
OREG	533	480	500	540	113	108
PA	4,121	4,650	5,400	4,985	107	92
S C	665	823	705	727	88	103
TENN	1,139	1,207	898	1,299	108	145
TEX	2,362	2,520	1,965	2,482	98	126
UTAH	440	458	463	548	120	118
VA	499	478	452	577	121	128
WASH	1,008	1,137	1,071	1,101	97	103
WIS	1,023	1,150	1,250	1,250	109	100
OTH STS	2,181	2,166	1,793	2,028	94	113
U S	50,928	52,459	52,250	55,677	106	107

1/ INCLUDES DISTRICT OF COLUMBIA.

MANUFACTURING GRADE MILK: AVERAGE PRICE AND FAT TEST FOR MILK USED  
PRIMARILY FOR CANNED EVAPORATED MILK BY REGIONS, JANUARY 1979

REGION	PRICE PER 100 LB OF MILK 1/			MILKFAT TEST			PRICE PER POUND OF MILKFAT		
	JAN 1978	DEC 1978	JAN 1979	JAN 1978	DEC 1978	JAN 1979	JAN 1978	DEC 1978	JAN 1979
	DOLLARS			PERCENT			DOLLARS		
NORTH CENTRAL	8.84	10.59	10.74	3.87	3.87	3.90	2.28	2.74	2.75
S ATL & CENTRAL	8.90	10.52	10.61	3.91	3.90	3.91	2.28	2.70	2.71
WEST	9.11	10.32	10.42	3.73	3.63	3.68	2.44	2.84	2.83
U S	8.92	10.50	10.62	3.85	3.82	3.86	2.32	2.75	2.75

1/ AVERAGE PRICE TO PRODUCERS FOR MILK OF AVERAGE FAT TEST, F.O.B. PLANT OR RECEIVING STATION.

CANNED MILK AND DRY MILK PRODUCTS: MANUFACTURERS' SHIPMENTS,  
STOCKS AND SELLING PRICES, JANUARY 1979

PRODUCT	JAN	JAN	DEC	JAN	PERCENT OF	
	1977	1978 <sup>4/</sup>	1978 <sup>4/</sup>	1979	JAN	DEC
	MANUFACTURERS' SHIPMENTS <sup>1/</sup>				PERCENT	
	1,000 POUNDS					
DRY WHOLE MILK	3,620	5,817	4,005	5,565	96	139
NONFAT DRY MILK FOR HUMAN FOOD	71,572	73,237	46,073	53,035	72	115
DRY SKIM MILK FOR ANIMAL FEED	422	580	204	184	32	90
DRY BUTTERMILK FOR HUMAN FOOD	2,869	2,896	2,561	2,770	96	108
DRY BUTTERMILK, TOTAL	3,048	2,949	2,592	2,827	96	109
	MANUFACTURERS' STOCKS, END-OF-MONTH <sup>2/</sup>				PERCENT	
	1,000 POUNDS					
CANNED EVAPORATED AND CONDENSED WHOLE MILK	66,288	59,742	70,282	65,963	110	94
DRY WHOLE MILK NONFAT DRY MILK FOR HUMAN FOOD	10,390	5,945	4,383	4,869	82	111
DRY SKIM MILK FOR ANIMAL FEED	91,638	61,331	40,135	36,067	59	90
DRY BUTTERMILK, TOTAL	2,886	2,305	802	930	40	116
	11,997	6,200	3,006	4,192	68	139
	MANUFACTURERS' SELLING PRICES <sup>3/</sup>				CHANGE-CENTS	
	CENTS PER POUND					
DRY WHOLE MILK	76.82	84.32	98.96	98.20	+13.88	-0.76
NONFAT DRY MILK FOR HUMAN FOOD	62.86	68.08	76.49	76.38	+8.30	-0.11
DRY SKIM MILK FOR ANIMAL FEED	32.26	32.36	35.00	37.64	+5.28	+2.64
DRY BUTTERMILK FOR HUMAN FOOD	49.66	62.19	73.88	74.58	+12.39	+0.70
DRY BUTTERMILK FOR ANIMAL FEED	24.12	26.27	35.00	34.95	+8.68	-0.05

<sup>1/</sup> FOR DRY PRODUCTS, SHIPMENTS OF BULK GOODS ONLY.

<sup>2/</sup> STOCKS HELD BY MANUFACTURERS AT ALL POINTS AND IN TRANSIT.

<sup>3/</sup> PRICES FOR BULK GOODS, F.O.B. PLANT. AVERAGE MONTHLY PRICES REPORTED BY FIRMS, WEIGHTED BY SHIPMENTS OF EACH FIRM.

<sup>4/</sup> REVISED.

MANUFACTURING GRADE MILK: AVERAGE PRICE AND FAT TEST FOR MILK  
USED PRIMARILY FOR SPECIFIED USES, JANUARY 1979

PRIMARY USE	PRICE PER 100 LBS OF MILK 1/			MILKFAT TEST			PRICE PER POUND OF MILKFAT		
	JAN 1978	DEC 1978	JAN 1979	JAN 1978	DEC 1978	JAN 1979	JAN 1978	DEC 1978	JAN 1979
	DOLLARS			PERCENT			DOLLARS		
MILK FOR:									
BUTTER									
BY-PRODUCTS	9.01	10.80	10.63	3.70	3.78	3.73	2.44	2.86	2.85
AMERICAN CHEESE	9.15	11.01	10.91	3.77	3.84	3.81	2.43	2.87	2.86
MISC CHEESE:									
SWISS	9.39	11.16	11.21	3.82	3.86	3.90	2.46	2.89	2.87
BRICK & MUNSTER	9.40	11.24	11.07	3.79	3.86	3.85	2.48	2.91	2.88
ITALIAN	9.24	11.11	10.98	3.78	3.86	3.82	2.44	2.88	2.87
ALL OTHER	9.20	10.98	10.89	3.81	3.87	3.83	2.41	2.84	2.84
ALL MISC CHEESE	9.29	11.13	11.04	3.79	3.86	3.84	2.45	2.88	2.88
ALL CHEESE	9.19	11.04	10.95	3.78	3.85	3.82	2.43	2.87	2.87

1/ AVERAGE PRICE TO PRODUCERS FOR MILK OF AVERAGE FAT TEST, F.O.B. PLANT OR RECEIVING STATION.

MANUFACTURING GRADE MILK: AVERAGE PRICE AND FAT TEST FOR MILK USED PRIMARILY  
FOR BUTTER AND AMERICAN CHEESE, BY STATES, JANUARY 1979

PRIMARY USE AND STATE	PRICE PER 100 LBS OF MILK 1/			MILKFAT TEST			PRICE PER POUND OF MILKFAT		
	JAN 1978	DEC 1978	JAN 1979	JAN 1978	DEC 1978	JAN 1979	JAN 1978	DEC 1978	JAN 1979
	DOLLARS			PERCENT			DOLLARS		
MILK FOR BUTTER AND BY-PRODUCTS									
CALIF	9.17	10.40	10.10	4.02	4.05	3.95	2.28	2.57	2.56
IOWA	9.15	11.10	11.05	3.77	3.81	3.81	2.43	2.91	2.90
MINN	8.90	10.70	10.50	3.60	3.69	3.63	2.47	2.90	2.89
S DAK	9.12	10.81	10.82	3.72	3.77	3.82	2.45	2.87	2.83
WIS	9.21	11.07	11.00	3.81	3.92	3.88	2.42	2.82	2.84
U S	9.01	10.80	10.63	3.70	3.78	3.73	2.44	2.86	2.85
MILK FOR AMERICAN CHEESE									
IDAHO	9.40	10.95	10.95	3.75	3.82	3.88	2.51	2.87	2.82
IOWA	9.20	11.00	11.00	3.81	3.84	3.83	2.41	2.86	2.87
KANS	8.98	10.70	10.80	3.88	3.93	3.93	2.31	2.72	2.75
KY	8.89	10.30	10.20	3.93	3.95	3.96	2.26	2.61	2.58
MINN	9.00	10.74	10.68	3.64	3.71	3.72	2.47	2.89	2.87
MO	8.80	10.50	10.60	3.92	3.88	3.86	2.24	2.71	2.75
NEBR	9.05	11.20	11.18	3.86	3.92	3.98	2.34	2.86	2.81
N DAK	8.60	10.40	10.30	3.69	3.72	3.67	2.33	2.80	2.81
S DAK	9.01	10.90	10.88	3.76	3.83	3.84	2.40	2.85	2.83
TENN	8.38	10.00	10.10	4.01	3.94	3.91	2.09	2.54	2.57
WIS	9.34	11.35	11.18	3.82	3.92	3.86	2.45	2.90	2.90
U S	9.15	11.01	10.91	3.77	3.84	3.81	2.43	2.87	2.86

1/ AVERAGE PRICE TO PRODUCERS FOR MILK OF AVERAGE FAT TEST, F.O.B. PLANT OR RECEIVING STATION.

CANNED MILK AND DRY MILK PRODUCTS: MANUFACTURERS'  
STOCKS AND SELLING PRICES, 1977-78 <sup>1/</sup>

MONTH	NONFAT DRY MILK FOR HUMAN FOOD				DRY SKIM MILK FOR ANIMAL FEED			
	STOCKS <sup>2/</sup>		SELLING PRICES <sup>3/</sup>		STOCKS <sup>2/</sup>		SELLING PRICES <sup>3/</sup>	
	1977	1978	1977	1978	1977	1978	1977	1978
	1,000 POUNDS		CENTS PER POUND		1,000 POUNDS		CENTS PER POUND	
JAN	91,638	61,331	62.86	68.08	2,886	2,305	32.26	32.36
FEB	84,650	55,374	62.47	67.99	4,486	2,394	29.65	32.00
MAR	78,061	49,791	63.14	68.01	2,387	1,863	28.73	31.06
APR	107,761	79,251	65.64	70.49	2,292	2,065	30.05	31.48
MAY	119,405	87,228	67.93	71.08	4,056	1,819	33.27	33.08
JUN	128,712	94,995	68.06	71.02	2,817	1,629	32.21	32.85
JUL	122,409	94,853	68.03	71.34	2,684	1,536	33.28	33.30
AUG	109,621	73,888	68.11	71.47	2,604	1,431	35.33	34.07
SEP	81,718	63,621	67.89	72.43	2,472	1,179	35.73	34.68
OCT	68,019	52,165	67.94	73.20	2,329	1,094	30.93	34.55
NOV	57,367	36,566	67.98	74.73	2,672	807	30.04	34.71
DEC	60,652	40,135	68.12	76.49	2,576	802	31.39	35.00

	DRY BUTTERMILK, TOTAL		DRY BUTTERMILK FOR HUMAN FOOD		DRY BUTTERMILK FOR ANIMAL FEED	
	STOCKS <sup>2/</sup>		SELLING PRICES <sup>3/</sup>		SELLING PRICES <sup>3/</sup>	
	1977	1978	1977	1978	1977	1978
	1,000 POUNDS		CENTS PER POUND		CENTS PER POUND	
JAN	11,997	6,200	49.66	62.19	24.12	26.27
FEB	11,897	7,485	47.31	61.16	22.29	25.98
MAR	9,845	6,025	46.83	59.80	23.83	25.60
APR	8,345	4,830	49.80	62.13	26.26	29.33
MAY	8,040	4,712	53.61	64.23	24.50	28.83
JUN	7,597	4,400	54.73	65.38	25.06	31.54
JUL	6,459	3,554	55.24	66.75	26.22	32.00
AUG	4,913	2,440	57.49	67.53	29.16	33.23
SEP	3,709	1,894	59.09	68.97	32.05	33.50
OCT	3,394	1,941	61.76	70.63	28.89	33.71
NOV	3,661	2,224	62.03	71.93	27.53	34.48
DEC	4,945	3,006	63.28	73.88	25.09	35.00

	CANNED EVAPORATED AND CONDENSED WHOLE MILK		DRY WHOLE MILK			
	STOCKS <sup>2/</sup>		STOCKS <sup>2/</sup>		SELLING PRICE <sup>3/</sup>	
	1977	1978	1977	1978	1977	1978
	1,000 POUNDS		1,000 POUNDS		CENTS PER POUND	
JAN	66,288	59,742	10,390	5,945	76.82	84.32
FEB	63,485	52,869	8,892	5,394	78.07	84.79
MAR	62,965	52,066	8,386	6,120	78.28	85.39
APR	66,429	57,379	10,026	7,267	79.50	86.40
MAY	101,495	79,428	8,610	8,414	79.84	86.60
JUN	127,686	101,401	9,926	9,494	80.73	87.06
JUL	133,208	120,189	8,997	9,448	80.93	88.13
AUG	158,721	134,380	6,511	9,307	82.49	90.66
SEP	148,612	135,972	6,304	7,398	82.69	92.61
OCT	134,311	113,826	5,763	5,319	82.33	94.89
NOV	100,990	84,383	5,917	3,721	83.75	97.29
DEC	75,156	70,282	5,972	4,383	83.68	98.96

<sup>1/</sup> 1977-78 REVISED USING DATA FROM LATE REPORTS. <sup>2/</sup> STOCKS HELD END-OF-MONTH BY MANUFACTURERS AT ALL POINTS AND IN TRANSIT. <sup>3/</sup> PRICES FOR BULK GOODS, F.O.B. PLANT. AVERAGE MONTHLY PRICES REPORTED BY FIRMS, WEIGHTED BY SHIPMENTS OF EACH FIRM.