



# Dairy Products

---

Released June 2, 2000, by the National Agricultural Statistics Service (NASS), Agricultural Statistics Board, U.S. Department of Agriculture. For information on "Dairy Products" call Tony Dorn at (202) 720-9168, office hours 7:00 a.m. to 4:00 p.m. ET.

## April 2000 Highlights

**American type cheese** production totaled 309 million pounds, 2.3 percent below April 1999 and 3.4 percent below March 2000.

**Total cheese** output (excluding cottage cheese) was 685 million pounds, 2.3 percent above April 1999 but 4.5 percent below March 2000.

**Cream cottage cheese** production was 28.5 million pounds, 8.6 percent below April 1999 and 9.0 percent below March 2000.

**Lowfat cottage cheese** production was 28.8 million pounds, 3.0 percent below April 1999 and 10.8 percent below March 2000.

**Butter** production was 117 million pounds in April, 2.3 percent above April 1999 but 4.5 percent below March 2000.

**Frozen dessert:** (comparisons with April 1999)

Ice cream, Regular (hard) --- 78.7 million gallons, up 1.6 percent.

Ice cream, Lowfat (total) --- 33.2 million gallons, down 7.0 percent.

Ice cream, Nonfat (hard) --- 3.14 million gallons, up 12.9 percent.

Sherbet (hard) --- 4.65 million gallons, down 1.1 percent.

Frozen Yogurt (total) --- 7.71 million gallons, down 16.8 percent.

**Dry milk products:** (comparisons with April 1999)

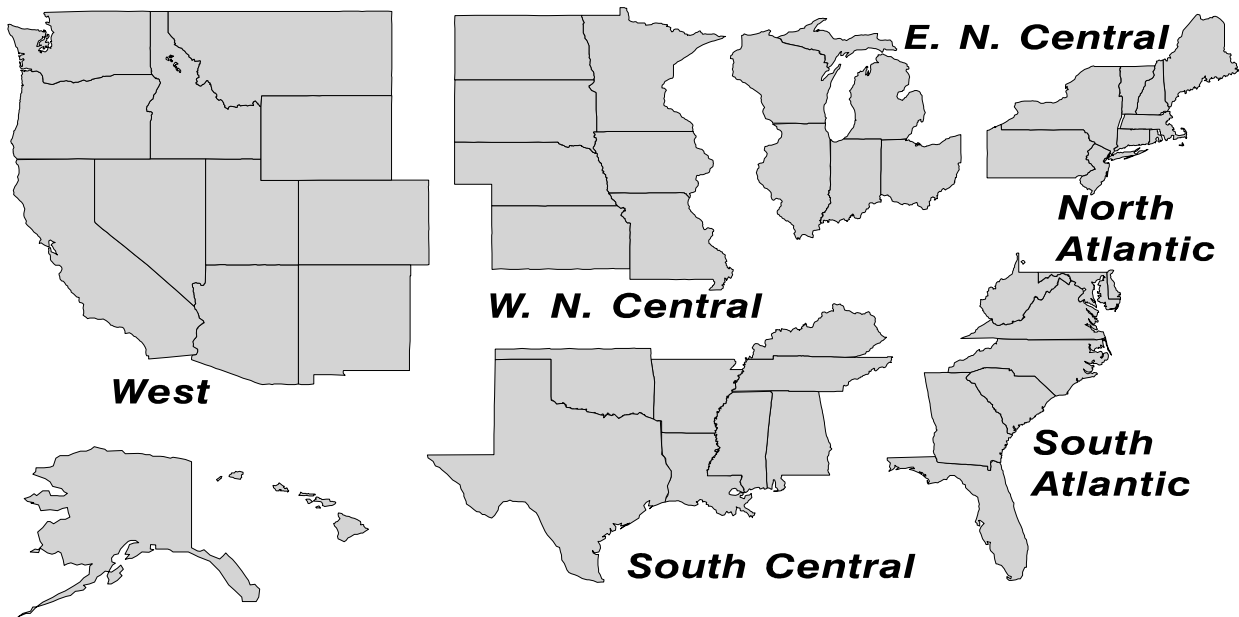
Nonfat dry milk for human food --- 147 million pounds, up 10.1 percent.

Dry whole milk --- 12.3 million pounds, up 38.4 percent.

Dry buttermilk --- 4.77 million pounds, down 5.5 percent.

## U. S. Geographic Regions Dairy Products

State totals are not published when fewer than 3 firms have reported or one firm comprises more than 60 percent of the State total. If we are not able to publish a region for confidentiality reasons, it will be combined with other regions when possible. For example, if North Atlantic can not be published, then it will be combined with South Atlantic to publish Atlantic. The West North Central and East North Central will be combined, if necessary, to form North Central. In the event that neither could be published, they may be combined with South Central to publish Central. Some tables will have only limited regions shown, therefore the regions may not add to the United States total.



**Dairy Products: Production by Product,  
United States, April, 1999-2000**

Product	Apr 1999	Mar 2000 <sup>1</sup>	Apr 2000	Change From	
				Apr 1999	Mar 2000
	<i>1,000 Pounds</i>	<i>1,000 Pounds</i>	<i>1,000 Pounds</i>	<i>Percent</i>	<i>Percent</i>
Butter	114,321	122,472	116,917	2.3	-4.5
Cheese					
American Types <sup>2</sup>	316,483	320,203	309,303	-2.3	-3.4
Cheddar	255,100	254,397	249,349	-2.3	-2.0
Swiss	18,837	18,326	16,336	-13.3	-10.9
Brick and Muenster	7,260	6,914	7,150	-1.5	3.4
Cream and Neufchatel	46,660	61,048	49,952	7.1	-18.2
Hispanic	7,122	8,349	7,626	7.1	-8.7
Mozzarella	209,947	227,236	223,251	6.3	-1.8
Other Italian Types	48,660	59,969	56,436	16.0	-5.9
Total Italian Types	258,607	287,205	279,687	8.2	-2.6
All Other Types	14,701	15,881	15,303	4.1	-3.6
Total	669,670	717,926	685,357	2.3	-4.5
Cottage Cheese, Curd <sup>3</sup>	39,465	39,871	43,374	9.9	8.8
Cottage Cheese, Cream <sup>4</sup>	31,182	31,317	28,496	-8.6	-9.0
Cottage Cheese, Lowfat <sup>5</sup>	29,694	32,273	28,796	-3.0	-10.8
Canned Evaporated and Condensed Whole Milk	39,910	39,287	27,937	-30.0	-28.9
Dry Whole Milk	8,916	11,840	12,341	38.4	4.2
Nonfat Dry Milk, Human	133,388	139,539	146,797	10.1	5.2
Dry Skim Milk, Animal	390	429	461	18.2	7.5
Dry Buttermilk	5,050	4,721	4,772	-5.5	1.1
Yogurt, Plain & Flavored	142,970	169,533	156,352	9.4	-7.8
	<i>1,000 Gallons</i>	<i>1,000 Gallons</i>	<i>1,000 Gallons</i>	<i>Percent</i>	<i>Percent</i>
Frozen Products					
Ice Cream, Hard	77,447	81,075	78,668	1.6	-3.0
Ice Cream, Lowfat, Hard	9,016	7,904	7,615	-15.5	-3.7
Ice Cream, Lowfat, Soft	26,711	26,826	25,617	-4.1	-4.5
Ice Cream, Lowfat, Total	35,727	34,730	33,232	-7.0	-4.3
Ice Cream, Nonfat, Hard	2,779	3,165	3,138	12.9	-0.9
Sherbet, Hard	4,702	4,591	4,651	-1.1	1.3
Water and Juice Ices	8,043	6,759	7,284	-9.4	7.8
Frozen Yogurt, Total	9,267	8,359	7,710	-16.8	-7.8
Regular & Lowfat, Hard	2,802	2,910	2,238	-20.1	-23.1
Nonfat, Hard	1,711	1,421	1,276	-25.4	-10.2
Other Frozen Dairy Products	1,206	1,283	973	-19.3	-24.2
Mix for Frozen Products					
Ice Cream Mix	44,763	46,080	45,087	0.7	-2.2
Ice Cream, Lowfat, Mix	19,800	19,316	18,481	-6.7	-4.3
Ice Cream, Nonfat, Mix	1,720	1,879	1,879	9.2	
Sherbet Mix	3,672	3,320	3,364	-8.4	1.3
Yogurt Mix	5,685	4,917	4,535	-20.2	-7.8

<sup>1</sup> Revised.

<sup>2</sup> Includes Cheddar, Colby, Monterey, and Jack.

<sup>3</sup> Mostly used for processing into cream or lowfat cottage cheese.

<sup>4</sup> Fat content 4 percent or more.

<sup>5</sup> Fat content less than 4 percent.

**Whey and Modified Whey Products: Production, Stocks,  
and Prices, United States, April, 1999-2000**

Product	Apr 1999	Mar 2000 <sup>1</sup>	Apr 2000	Change From	
				Apr 1999	Mar 2000
<b>Production</b>					
	<i>1,000 Pounds</i>	<i>1,000 Pounds</i>	<i>1,000 Pounds</i>	<i>Percent</i>	<i>Percent</i>
Condensed Whey, Solids Content <sup>2</sup>					
Sweet-Type, Human	9,214	10,059	9,925	7.7	-1.3
Sweet-Type, Animal	1,416	1,137	1,060	-25.1	-6.8
Dry Whey Products					
Dry Whey, Human	92,029	101,801	92,752	0.8	-8.9
Dry Whey, Animal	6,060	7,651	7,296	20.4	-4.6
Dry Whey, Total	98,089	109,452	100,048	2.0	-8.6
Reduced Lactose and Minerals					
Human Food	8,509	9,537	7,071	-16.9	-25.9
Animal Feed	2,610	3,245	3,325	27.4	2.5
Lactose, Human and Animal	42,002	43,259	42,532	1.3	-1.7
Whey					
Solids in Wet Blends, Animal	2,706	3,043	2,700	-0.2	-11.3
Protein Concentrate, Human	26,280	30,226	29,594	12.6	-2.1
Protein Concentrate, Animal	4,035	3,707	3,581	-11.3	-3.4
<b>Manufacturers' Stocks End-of-Month <sup>3</sup></b>					
	<i>1,000 Pounds</i>	<i>1,000 Pounds</i>	<i>1,000 Pounds</i>	<i>Percent</i>	<i>Percent</i>
Dry Whey Products					
Dry Whey, Human	56,335	42,677	43,835	-22.2	2.7
Dry Whey, Animal	10,062	6,987	7,747	-23.0	10.9
Reduced Lactose and Minerals					
Human and Animal <sup>4</sup>	12,414	11,634	11,956	-3.7	2.8
Lactose, Human and Animal	26,371	24,582	24,530	-7.0	-0.2
Whey Protein Concentrate, Human	17,274	15,033	15,817	-8.4	5.2
Whey Protein Concentrate, Animal	2,082	1,290	1,465	-29.6	13.6
<b>Manufacturers' Selling Price <sup>5</sup></b>					
	<i>Cents per Pound</i>	<i>Cents per Pound</i>	<i>Cents per Pound</i>	<i>Cents Change</i>	<i>Cents Change</i>
Dry Whey, Animal	16.1	15.9	15.9	-0.2	

<sup>1</sup> Revised.

<sup>2</sup> Final marketable product only. Does not include quantity used or shipped to another plant for further processing into dry whey or modified whey products.

<sup>3</sup> Stocks held by manufacturers at all points and in transit.

<sup>4</sup> Reduced lactose and minerals stocks combined to avoid disclosure of individual operations.

<sup>5</sup> Prices for bulk goods, f.o.b. plant. Average monthly prices reported by firms.

**Dairy Products: Production by Product and Month,  
United States, 1999-2000 <sup>1</sup>**

Product and Month	By Month			Cumulative		
	1999	2000	Change From 1999	1999	2000	Change From 1999
	<i>1,000 Pounds</i>	<i>1,000 Pounds</i>	<i>Percent</i>	<i>1,000 Pounds</i>	<i>1,000 Pounds</i>	<i>Percent</i>
<b>Total Cheese</b>						
Jan	634,037	686,908	8.3	634,037	686,908	8.3
Feb	592,688	645,567	8.9	1,226,725	1,332,475	8.6
Mar	697,446	717,926	2.9	1,924,171	2,050,401	6.6
Apr	669,670	685,357	2.3	2,593,841	2,735,758	5.5
May	675,002			3,268,843		
Jun	669,448			3,938,291		
Jul	649,811			4,588,102		
Aug	648,462			5,236,564		
Sep	641,271			5,877,835		
Oct	671,932			6,549,767		
Nov	688,450			7,238,217		
Dec	705,815			7,944,032		
<b>American Cheese</b>						
Jan	293,287	316,717	8.0	293,287	316,717	8.0
Feb	275,844	302,331	9.6	569,131	619,048	8.8
Mar	317,731	320,203	0.8	886,862	939,251	5.9
Apr	316,483	309,303	-2.3	1,203,345	1,248,554	3.8
May	312,488			1,515,833		
Jun	294,025			1,809,858		
Jul	299,376			2,109,234		
Aug	293,117			2,402,351		
Sep	281,074			2,683,425		
Oct	295,302			2,978,727		
Nov	288,102			3,266,829		
Dec	309,719			3,576,548		
<b>Cheddar Cheese</b>						
Jan	236,284	248,997	5.4	236,284	248,997	5.4
Feb	216,974	236,410	9.0	453,258	485,407	7.1
Mar	254,183	254,397	0.1	707,441	739,804	4.6
Apr	255,100	249,349	-2.3	962,541	989,153	2.8
May	251,037			1,213,578		
Jun	231,429			1,445,007		
Jul	232,586			1,677,593		
Aug	226,150			1,903,743		
Sep	219,998			2,123,741		
Oct	233,513			2,357,254		
Nov	218,471			2,575,725		
Dec	241,142			2,816,867		

See footnotes at end of table.

--continued

**Dairy Products: Production by Product and Month,  
United States, 1999-2000 <sup>1</sup> (continued)**

Product and Month	By Month			Cumulative		
	1999	2000	Change From 1999	1999	2000	Change From 1999
	<i>1,000 Pounds</i>	<i>1,000 Pounds</i>	<i>Percent</i>	<i>1,000 Pounds</i>	<i>1,000 Pounds</i>	<i>Percent</i>
<b>Italian Cheese</b>						
Jan	247,977	276,753	11.6	247,977	276,753	11.6
Feb	232,383	258,511	11.2	480,360	535,264	11.4
Mar	276,676	287,205	3.8	757,036	822,469	8.6
Apr	258,607	279,687	8.2	1,015,643	1,102,156	8.5
May	263,594			1,279,237		
Jun	267,176			1,546,413		
Jul	254,912			1,801,325		
Aug	253,239			2,054,564		
Sep	253,217			2,307,781		
Oct	263,015			2,570,796		
Nov	286,047			2,856,843		
Dec	285,804			3,142,647		
<b>Mozzarella Cheese</b>						
Jan	196,882	215,207	9.3	196,882	215,207	9.3
Feb	186,524	204,909	9.9	383,406	420,116	9.6
Mar	221,945	227,236	2.4	605,351	647,352	6.9
Apr	209,947	223,251	6.3	815,298	870,603	6.8
May	210,678			1,025,976		
Jun	212,572			1,238,548		
Jul	210,061			1,448,609		
Aug	206,074			1,654,683		
Sep	204,774			1,859,457		
Oct	206,589			2,066,046		
Nov	226,116			2,292,162		
Dec	226,670			2,518,832		
<b>Other Italian</b>						
Jan	51,095	61,546	20.5	51,095	61,546	20.5
Feb	45,859	53,602	16.9	96,954	115,148	18.8
Mar	54,731	59,969	9.6	151,685	175,117	15.4
Apr	48,660	56,436	16.0	200,345	231,553	15.6
May	52,916			253,261		
Jun	54,604			307,865		
Jul	44,851			352,716		
Aug	47,165			399,881		
Sep	48,443			448,324		
Oct	56,426			504,750		
Nov	59,931			564,681		
Dec	59,134			623,815		

See footnotes at end of table.

--continued

**Dairy Products: Production by Product and Month,  
United States, 1999-2000 <sup>1</sup> (continued)**

Product and Month	By Month			Cumulative		
	1999	2000	Change From 1999	1999	2000	Change From 1999
	<i>1,000 Pounds</i>	<i>1,000 Pounds</i>	<i>Percent</i>	<i>1,000 Pounds</i>	<i>1,000 Pounds</i>	<i>Percent</i>
Butter						
Jan	129,016	142,292	10.3	129,016	142,292	10.3
Feb	119,384	130,259	9.1	248,400	272,551	9.7
Mar	125,357	122,472	-2.3	373,757	395,023	5.7
Apr	114,321	116,917	2.3	488,078	511,940	4.9
May	110,894			598,972		
Jun	94,593			693,565		
Jul	84,804			778,369		
Aug	78,242			856,611		
Sep	92,056			948,667		
Oct	103,097			1,051,764		
Nov	103,506			1,155,270		
Dec	119,772			1,275,042		
Nonfat Dry Milk, Human						
Jan	120,545	133,558	10.8	120,545	133,558	10.8
Feb	115,827	133,111	14.9	236,372	266,669	12.8
Mar	128,778	139,539	8.4	365,150	406,208	11.2
Apr	133,388	146,797	10.1	498,538	553,005	10.9
May	136,717			635,255		
Jun	118,626			753,881		
Jul	99,276			853,157		
Aug	95,764			948,921		
Sep	95,473			1,044,394		
Oct	105,269			1,149,663		
Nov	102,432			1,252,095		
Dec	126,095			1,378,190		
Total Dry Whey <sup>2</sup>						
Jan	96,248	109,864	14.1	96,248	109,864	14.1
Feb	90,009	102,803	14.2	186,257	212,667	14.2
Mar	102,217	109,452	7.1	288,474	322,119	11.7
Apr	98,089	100,048	2.0	386,563	422,167	9.2
May	102,521			489,084		
Jun	98,945			588,029		
Jul	97,906			685,935		
Aug	98,929			784,864		
Sep	91,529			876,393		
Oct	93,904			970,297		
Nov	92,533			1,062,830		
Dec	100,981			1,163,811		

See footnotes at end of table.

--continued

**Dairy Products: Production by Product and Month,  
United States, 1999-2000<sup>1</sup> (continued)**

Product and Month	By Month			Cumulative		
	1999	2000	Change From 1999	1999	2000	Change From 1999
	<i>1,000 Pounds</i>	<i>1,000 Pounds</i>	<i>Percent</i>	<i>1,000 Pounds</i>	<i>1,000 Pounds</i>	<i>Percent</i>
<b>Cream Cottage Cheese</b>						
Jan	27,065	27,627	2.1	27,065	27,627	2.1
Feb	27,624	28,243	2.2	54,689	55,870	2.2
Mar	31,646	31,317	-1.0	86,335	87,187	1.0
Apr	31,182	28,496	-8.6	117,517	115,683	-1.6
May	31,205			148,722		
Jun	31,175			179,897		
Jul	31,896			211,793		
Aug	32,065			243,858		
Sep	31,588			275,446		
Oct	29,973			305,419		
Nov	28,972			334,391		
Dec	27,190			361,581		
<b>Lowfat Cottage Cheese</b>						
Jan	27,712	28,203	1.8	27,712	28,203	1.8
Feb	28,160	29,381	4.3	55,872	57,584	3.1
Mar	34,090	32,273	-5.3	89,962	89,857	-0.1
Apr	29,694	28,796	-3.0	119,656	118,653	-0.8
May	29,994			149,650		
Jun	32,274			181,924		
Jul	31,910			213,834		
Aug	31,850			245,684		
Sep	31,772			277,456		
Oct	29,327			306,783		
Nov	27,041			333,824		
Dec	26,516			360,340		
	<i>1,000 Gallons</i>	<i>1,000 Gallons</i>	<i>Percent</i>	<i>1,000 Gallons</i>	<i>1,000 Gallons</i>	<i>Percent</i>
<b>Ice Cream, Hard</b>						
Jan	60,529	60,037	-0.8	60,529	60,037	-0.8
Feb	64,996	67,755	4.2	125,525	127,792	1.8
Mar	77,201	81,075	5.0	202,726	208,867	3.0
Apr	77,447	78,668	1.6	280,173	287,535	2.6
May	76,906			357,079		
Jun	90,063			447,142		
Jul	86,705			533,847		
Aug	81,749			615,596		
Sep	72,278			687,874		
Oct	62,290			750,164		
Nov	58,994			809,158		
Dec	57,043			866,201		

See footnotes at end of table.

--continued



**Dairy Products: Production by Product and Month,  
United States, 1999-2000 <sup>1</sup> (continued)**

Product and Month	By Month			Cumulative		
	1999	2000	Change From 1999	1999	2000	Change From 1999
	<i>1,000 Gallons</i>	<i>1,000 Gallons</i>	<i>Percent</i>	<i>1,000 Gallons</i>	<i>1,000 Gallons</i>	<i>Percent</i>
<b>Ice Cream, Lowfat</b>						
Jan	23,869	20,469	-14.2	23,869	20,469	-14.2
Feb	26,986	27,171	0.7	50,855	47,640	-6.3
Mar	34,290	34,730	1.3	85,145	82,370	-3.3
Apr	35,727	33,232	-7.0	120,872	115,602	-4.4
May	38,680			159,552		
Jun	41,846			201,398		
Jul	40,793			242,191		
Aug	39,565			281,756		
Sep	32,958			314,714		
Oct	28,643			343,357		
Nov	25,543			368,900		
Dec	24,751			393,651		
<b>Ice Cream, NF, Hard</b>						
Jan	2,814	2,457	-12.7	2,814	2,457	-12.7
Feb	2,718	2,550	-6.2	5,532	5,007	-9.5
Mar	3,124	3,165	1.3	8,656	8,172	-5.6
Apr	2,779	3,138	12.9	11,435	11,310	-1.1
May	3,270			14,705		
Jun	3,317			18,022		
Jul	3,434			21,456		
Aug	3,039			24,495		
Sep	3,309			27,804		
Oct	2,551			30,355		
Nov	2,034			32,389		
Dec	2,320			34,709		
<b>Sherbet, Hard</b>						
Jan	3,298	3,312	0.4	3,298	3,312	0.4
Feb	3,736	3,663	-2.0	7,034	6,975	-0.8
Mar	4,781	4,591	-4.0	11,815	11,566	-2.1
Apr	4,702	4,651	-1.1	16,517	16,217	-1.8
May	5,036			21,553		
Jun	5,683			27,236		
Jul	5,322			32,558		
Aug	5,154			37,712		
Sep	4,273			41,985		
Oct	3,532			45,517		
Nov	3,446			48,963		
Dec	2,999			51,962		

See footnotes at end of table.

--continued

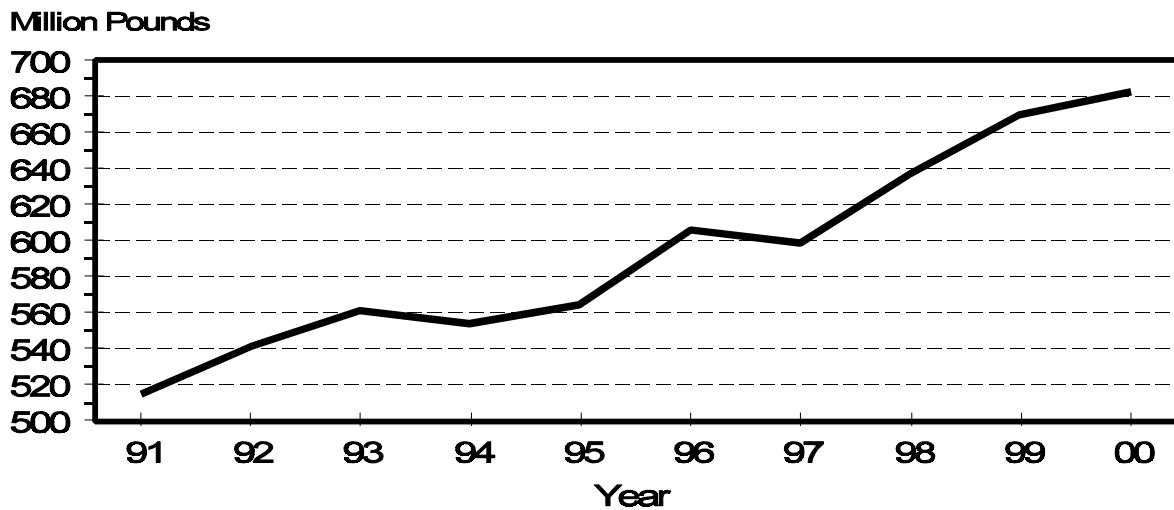
**Dairy Products: Production by Product and Month,  
United States, 1999-2000 <sup>1</sup> (continued)**

Product and Month	By Month			Cumulative		
	1999	2000	Change From 1999	1999	2000	Change From 1999
	<i>1,000 Gallons</i>	<i>1,000 Gallons</i>	<i>Percent</i>	<i>1,000 Gallons</i>	<i>1,000 Gallons</i>	<i>Percent</i>
Frozen Yogurt						
Jan	6,659	5,467	-17.9	6,659	5,467	-17.9
Feb	7,876	6,851	-13.0	14,535	12,318	-15.3
Mar	9,325	8,359	-10.4	23,860	20,677	-13.3
Apr	9,267	7,710	-16.8	33,127	28,387	-14.3
May	9,405			42,532		
Jun	9,694			52,226		
Jul	8,461			60,687		
Aug	8,737			69,424		
Sep	7,697			77,121		
Oct	6,227			83,348		
Nov	5,661			89,009		
Dec	5,666			94,675		

<sup>1</sup> March 2000 data revised.

<sup>2</sup> Excludes all modified dry whey products.

**April Total Cheese Production  
United States**



**Total Cheese, Excluding Cottage Cheese: Production by  
State and United States, April 1999-2000**

State	Apr 1999	Mar <sup>1</sup> 2000	Apr 2000	Change From	
				Apr 1999	Mar 2000
	<i>1,000 Pounds</i>	<i>1,000 Pounds</i>	<i>1,000 Pounds</i>	<i>Percent</i>	<i>Percent</i>
CA	114,562	124,682	124,518	8.7	-0.1
ID	45,994	47,343	48,435	5.3	2.3
IL	7,967	7,536	6,879	-13.7	-8.7
IA	22,654	23,743	22,552	-0.5	-5.0
MA	77	53	114	48.1	115.1
MN	59,661	62,849	58,925	-1.2	-6.2
MO	11,382	15,297	13,081	14.9	-14.5
NY	56,541	64,375	57,574	1.8	-10.6
ND	2,606	1,699	1,733	-33.5	2.0
OH	10,984	13,123	9,488	-13.6	-27.7
PA	33,084	34,788	29,602	-10.5	-14.9
SD	11,552	13,485	13,036	12.8	-3.3
UT	6,711	6,266	6,475	-3.5	3.3
WA	12,966	14,706	13,479	4.0	-8.3
WI	178,547	188,294	176,873	-0.9	-6.1
Oth Sts <sup>2</sup>	94,382	99,687	102,593	8.7	2.9
US	669,670	717,926	685,357	2.3	-4.5
N Atlantic	103,092	113,573	104,317	1.2	-8.1
S Atlantic	3,516	3,812	7,184	104.3	88.5
E N Central	210,357	222,775	207,837	-1.2	-6.7
W N Central	115,390	125,491	117,085	1.5	-6.7
S Central	4,192	5,504	4,472	6.7	-18.8
West	233,123	246,771	244,462	4.9	-0.9

<sup>1</sup> Revised.

<sup>2</sup> States not shown when fewer than 3 plants reported or individual plant operations could be disclosed. Percent change shown only when comparable States are included in the calculation.

**American Cheese: Production by State and United States, April 1999-2000**

State	Apr 1999	Mar <sup>1</sup> 2000	Apr 2000	Change From	
				Apr 1999	Mar 2000
	<i>1,000 Pounds</i>	<i>1,000 Pounds</i>	<i>1,000 Pounds</i>	<i>Percent</i>	<i>Percent</i>
CA	53,341	52,931	52,501	-1.6	-0.8
ID	42,186	41,190	41,707	-1.1	1.3
IA	10,454	11,113	10,747	2.8	-3.3
MN	56,516	58,193	54,863	-2.9	-5.7
NY	9,053	9,190	9,140	1.0	-0.5
ND	2,606	1,699	1,733	-33.5	2.0
OH	3,127	3,615	2,959	-5.4	-18.1
OR	4,892	5,127	5,155	5.4	0.5
SD	5,528	7,173	6,061	9.6	-15.5
UT	4,034	3,074	3,304	-18.1	7.5
WA	11,003	12,552	11,493	4.5	-8.4
WI	80,446	79,600	76,300	-5.2	-4.1
Oth Sts <sup>2</sup>	33,297	34,746	33,340	0.1	-4.0
US	316,483	320,203	309,303	-2.3	-3.4
Atlantic	15,035	14,772	15,508	3.1	5.0
E N Central	85,520	84,810	80,728	-5.6	-4.8
W N Central	79,913	82,871	78,098	-2.3	-5.8
S Central	3,953	5,161	4,200	6.2	-18.6
West	132,062	132,589	130,769	-1.0	-1.4

<sup>1</sup> Revised.

<sup>2</sup> States not shown when fewer than 3 plants reported or individual plant operations could be disclosed. Percent change shown only when comparable States are included in the calculation.

**Cheddar Cheese: Production by State and United States, April 1999-2000**

State	Apr 1999	Mar <sup>1</sup> 2000	Apr 2000	Change From	
				Apr 1999	Mar 2000
	<i>1,000 Pounds</i>	<i>1,000 Pounds</i>	<i>1,000 Pounds</i>	<i>Percent</i>	<i>Percent</i>
CA	39,157	40,010	40,742	4.0	1.8
ID	27,636	22,668	22,874	-17.2	0.9
MN	55,131	55,626	52,555	-4.7	-5.5
NY	8,951	9,129	9,063	1.3	-0.7
WI	66,243	66,150	65,100	-1.7	-1.6
Oth Sts <sup>2</sup>	57,982	60,814	59,015	1.8	-3.0
US	255,100	254,397	249,349	-2.3	-2.0
Atlantic	14,588	14,246	15,153	3.9	6.4
E N Cen	68,596	68,270	66,862	-2.5	-2.1
W N Cen	67,770	69,432	64,541	-4.8	-7.0
S Cen	3,953	5,156	4,190	6.0	-18.7
West	100,193	97,293	98,603	-1.6	1.3

<sup>1</sup> Revised.

<sup>2</sup> States not shown when fewer than 3 plants reported or individual plant operations could be disclosed. Percent change shown only when comparable States are included in the calculation.

**Mozzarella Cheese: Production by State and United States, April 1999-2000**

State	Apr 1999	Mar <sup>1</sup> 2000	Apr 2000	Change From	
				Apr 1999	Mar 2000
	<i>1,000 Pounds</i>	<i>1,000 Pounds</i>	<i>1,000 Pounds</i>	<i>Percent</i>	<i>Percent</i>
CA	49,669	53,090	54,012	8.7	1.7
ID	399	2,190	2,549	538.8	16.4
IL	581	540	420	-27.7	-22.2
NY	19,453	22,135	21,739	11.8	-1.8
SD	4,700	5,445	5,875	25.0	7.9
WI	51,252	59,495	54,207	5.8	-8.9
Oth Sts <sup>2</sup>	83,893	84,341	84,449	0.7	0.1
US	209,947	227,236	223,251	6.3	-1.8
Atlantic	47,442	49,423	51,039	7.6	3.3
E N Central	62,843	72,652	67,483	7.4	-7.1
W N Central	17,216	17,832	17,375	0.9	-2.6
West	82,446	87,329	87,354	6.0	

<sup>1</sup> Revised.

<sup>2</sup> States not shown when fewer than 3 plants reported or individual plant operations could be disclosed. Percent change shown only when comparable States are included in the calculation.

**Butter: Production by State and United States, April 1999-2000**

State	Apr 1999	Mar <sup>1</sup> 2000	Apr 2000	Change From	
				Apr 1999	Mar 2000
	<i>1,000 Pounds</i>	<i>1,000 Pounds</i>	<i>1,000 Pounds</i>	<i>Percent</i>	<i>Percent</i>
CA	31,749	34,853	31,934	0.6	-8.4
MN	5,005	5,037	5,646	12.8	12.1
NY	2,310	2,130	2,146	-7.1	0.8
ND	410	261	308	-24.9	18.0
PA	8,842	11,068	11,791	33.4	6.5
WA	7,501	10,136	9,624	28.3	-5.1
WI	27,688	26,426	24,800	-10.4	-6.2
Oth Sts <sup>2</sup>	30,816	32,561	30,668	-0.5	-5.8
US	114,321	122,472	116,917	2.3	-4.5
N Atlantic	14,568	18,055	18,673	28.2	3.4
E N Central	35,179	29,076	28,535	-18.9	-1.9
W N Central	10,617	10,816	11,431	7.7	5.7
West	43,048	50,463	46,334	7.6	-8.2

<sup>1</sup> Revised.

<sup>2</sup> States not shown when fewer than 3 plants reported or individual plant operations could be disclosed. Percent change shown only when comparable States are included in the calculation.

**Nonfat Dry Milk, Human: Production by State  
and United States, April 1999-2000**

State	Apr 1999	Mar <sup>1</sup> 2000	Apr 2000	Change From	
				Apr 1999	Mar 2000
	<i>1,000 Pounds</i>	<i>1,000 Pounds</i>	<i>1,000 Pounds</i>	<i>Percent</i>	<i>Percent</i>
CA	60,575	59,338	62,364	3.0	5.1
MN & WI	2,178	2,357	2,524	15.9	7.1
NM	4,828	5,991	5,883	21.9	-1.8
ND	64		17	-73.4	
WA	14,983	15,422	16,254	8.5	5.4
Oth Sts <sup>2</sup>	50,760	56,431	59,755	17.7	5.9
US	133,388	139,539	146,797	10.1	5.2
Atlantic	24,937	18,664	21,436	-14.0	14.9
E N Central	4,933	6,505	6,499	31.7	-0.1
W N Central	9,339	9,251	9,041	-3.2	-2.3
S Central	7,244	10,627	12,244	69.0	15.2
West	86,935	94,492	97,577	12.2	3.3

<sup>1</sup> Revised.

<sup>2</sup> States not shown when fewer than 3 plants reported or individual plant operations could be disclosed. Percent change shown only when comparable States are included in the calculation.

**Dry Whey, Human: Production by State  
and United States, April 1999-2000**

State	Apr 1999	Mar <sup>1</sup> 2000	Apr 2000	Change From	
				Apr 1999	Mar 2000
	<i>1,000 Pounds</i>	<i>1,000 Pounds</i>	<i>1,000 Pounds</i>	<i>Percent</i>	<i>Percent</i>
CA	9,382	9,637	10,313	9.9	7.0
MN	8,389	7,481	7,424	-11.5	-0.8
NY	10,642	11,659	10,936	2.8	-6.2
PA	10,542	9,252	9,012	-14.5	-2.6
UT	2,523	2,189	2,083	-17.4	-4.8
WA	7,240	15,371	8,167	12.8	-46.9
WI	22,470	23,900	23,800	5.9	-0.4
Oth Sts <sup>2</sup>	20,841	22,312	21,017	0.8	-5.8
US	92,029	101,801	92,752	0.8	-8.9
Atlantic	21,184	20,911	19,948	-5.8	-4.6
Central	40,288	43,529	42,663	5.9	-2.0
West	30,557	37,361	30,141	-1.4	-19.3

<sup>1</sup> Revised.

<sup>2</sup> States not shown when fewer than 3 plants reported or individual plant operations could be disclosed. Percent change shown only when comparable States are included in the calculation.

**Lactose: Production by State and  
United States, April 1999-2000**

State	Apr 1999	Mar <sup>1</sup> 2000	Apr 2000	Change From	
				Apr 1999	Mar 2000
	<i>1,000 Pounds</i>	<i>1,000 Pounds</i>	<i>1,000 Pounds</i>	<i>Percent</i>	<i>Percent</i>
MN	9,308	9,752	9,622	3.4	-1.3
WI	8,347	8,635	8,275	-0.9	-4.2
Oth Sts <sup>2</sup>	24,347	24,872	24,635	1.2	-1.0
US	42,002	43,259	42,532	1.3	-1.7
E N Central	9,282	9,650	9,359	0.8	-3.0
W N Central	14,944	15,961	15,602	4.4	-2.2
West	15,754	16,868	16,871	7.1	

<sup>1</sup> Revised.

<sup>2</sup> States not shown when fewer than 3 plants reported or individual plant operations could be disclosed. Percent change shown only when comparable States are included in the calculation.

**Whey Protein Concentrate, Human: Production by State  
and United States, April 1999-2000**

State	Apr 1999	Mar <sup>1</sup> 2000	Apr 2000	Change From	
				Apr 1999	Mar 2000
	<i>1,000 Pounds</i>	<i>1,000 Pounds</i>	<i>1,000 Pounds</i>	<i>Percent</i>	<i>Percent</i>
CA	8,054	8,607	8,583	6.6	-0.3
MN	4,390	5,043	4,813	9.6	-4.6
WI	4,409	4,357	4,233	-4.0	-2.8
Oth Sts <sup>2</sup>	9,427	12,219	11,965	26.9	-2.1
US	26,280	30,226	29,594	12.6	-2.1

<sup>1</sup> Revised.

<sup>2</sup> States not shown when fewer than 3 plants reported or individual plant operations could be disclosed. Percent change shown only when comparable States are included in the calculation.

**Ice Cream, Hard: Production by State and United States, April 1999-2000**

State	Apr 1999	Mar <sup>1</sup> 2000	Apr 2000	Change From	
				Apr 1999	Mar 2000
	<i>1,000 Gallons</i>	<i>1,000 Gallons</i>	<i>1,000 Gallons</i>	<i>Percent</i>	<i>Percent</i>
CA	10,474	10,379	10,551	0.7	1.7
FL	1,764	1,550	1,500	-15.0	-3.2
IL	3,123	3,300	3,120	-0.1	-5.5
IN	6,251	6,798	7,369	17.9	8.4
ME	97	83	96	-1.0	15.7
MD	1,912	1,816	1,944	1.7	7.0
MA	6,226	5,134	7,326	17.7	42.7
MI	1,925	1,385	957	-50.3	-30.9
MN	4,040	4,455	3,746	-7.3	-15.9
NH	37	30	31	-16.2	3.3
NM	219	219	219		
NY	2,706	3,200	2,600	-3.9	-18.8
NC	1,644	1,676	1,664	1.2	-0.7
ND	113	114	98	-13.3	-14.0
OH	3,195	3,220	2,700	-15.5	-16.1
OR	945	880	900	-4.8	2.3
PA	3,715	4,362	3,402	-8.4	-22.0
SD	2	2	2		
TN	1,441	1,831	1,588	10.2	-13.3
TX	4,755	4,922	4,778	0.5	-2.9
UT	952	1,073	1,088	14.3	1.4
WA	1,649	1,802	1,562	-5.3	-13.3
Oth Sts <sup>2</sup>	20,262	22,844	21,427	5.7	-6.2
US	77,447	81,075	78,668	1.6	-3.0
N Atlantic	14,901	15,475	16,117	8.2	4.1
S Atlantic	8,787	7,248	7,102	-19.2	-2.0
E N Central	15,299	15,554	15,006	-1.9	-3.5
W N Central	10,122	13,812	11,421	12.8	-17.3
S Central	10,054	10,936	10,200	1.5	-6.7
West	18,284	18,050	18,822	2.9	4.3

<sup>1</sup> Revised.

<sup>2</sup> States not shown when fewer than 3 plants reported or individual plant operations could be disclosed. Percent change shown only when comparable States are included in the calculation.



**Canned Milk and Dry Milk Products: Manufacturers' shipments,  
Stocks, and Selling Prices, April, 1999-2000**

Product	Apr 1999	Mar 2000 <sup>1</sup>	Apr 2000	Change From	
				Apr 1999	Mar 2000
<b>Manufacturers' Shipments<sup>2</sup></b>					
	<i>1,000 Pounds</i>	<i>1,000 Pounds</i>	<i>1,000 Pounds</i>	<i>Percent</i>	<i>Percent</i>
Dry Whole Milk	8,671	11,393	8,685	0.2	-23.8
Nonfat Dry Milk, Human	84,681	126,144	98,391	16.2	-22.0
Dry Skim Milk, Animal	408	406	492	20.6	21.2
Dry Buttermilk, Human	3,043	5,486	5,828	91.5	6.2
<b>Manufacturers' Stocks End-of-Month<sup>3</sup></b>					
	<i>1,000 Pounds</i>	<i>1,000 Pounds</i>	<i>1,000 Pounds</i>	<i>Percent</i>	<i>Percent</i>
Canned Evaporated and Condensed Whole Milk	36,371	38,112	38,753	6.5	1.7
Dry Whole Milk	5,747	5,298	8,228	43.2	55.3
Nonfat Dry Milk, Human	141,237	167,925	195,622	38.5	16.5
Dry Skim Milk, Animal	1,667	1,212	1,339	-19.7	10.5
Dry Buttermilk, Total	7,258	6,400	4,862	-33.0	-24.0
<b>Manufacturers' Selling Price<sup>4</sup></b>					
	<i>Cents per Pound</i>	<i>Cents per Pound</i>	<i>Cents per Pound</i>	<i>Cents Change</i>	<i>Cents Change</i>
Dry Whole Milk	117.82	113.45	116.57	-1.25	3.12
Dry Skim Milk, Animal	54.90	55.01	55.23	0.33	0.22
Dry Buttermilk, Human	74.76	61.80	69.81	-4.95	8.01

<sup>1</sup> Revised.

<sup>2</sup> For dry products, shipments of bulk goods only.

<sup>3</sup> Stocks held by manufacturers at all points and in transit.

<sup>4</sup> Prices for bulk goods, f.o.b. plant. Average monthly prices reported by firms, weighted by shipments of each firm.

**Procedures and Reliability:** Estimates included in this report are based on data provided each month by manufacturers of these products. In 32 States, the State Departments of Agriculture assist in collection of data, which eliminates duplicate reporting and reduces respondent burden. Data are collected by mail, personal and telephone interviews following the close of each month. There were 1,258 manufacturers that made one or more products in 1999. Each month, reports are generally received from all dairy plants in States with small numbers of plants. In States with large numbers of plants, survey procedures are designed to obtain monthly reports from all large plants and from a sample of small plants. Monthly estimates are based upon returns from about 70 percent of the plants which account for 70 to 90 percent of the total production of major dairy products.

**Revision Policy:** Monthly estimates are subject to revision the month following the preliminary estimates. Annual estimates are published in the "**Dairy Products**" report published each April which includes any revisions made to current and previous year. In preparing the annual report, an attempt is made to get information from all plants.

The next "Dairy Products" report will be released at 3 p.m. ET on July 3, 2000.

The United States Department of Agriculture (USDA) prohibits discrimination in all its programs on the basis of race, color, national origin, gender, religion, age, disability, political beliefs, sexual orientation, and marital or family status. (Not all prohibited bases apply to all programs.) Persons with disabilities who require alternative means for communication of program information (braille, large print, audiotape, etc.) should contact the USDA's TARGET Center at 202-720-2600 (voice and TDD).

To file a complaint of discrimination, write USDA, Director, Office of Civil Rights, Room 326-W, Whitten Building, 14th and Independence Avenue, SW, Washington, D.C., 20250-9410, or call 202-720-5964 (voice or TDD). USDA is an equal opportunity provider and employer.

## ACCESS TO REPORTS!!

---

For your convenience, there are several ways to obtain NASS reports, data products, and services:

### INTERNET ACCESS

All NASS reports are available free of charge on the worldwide Internet. For access, connect to the Internet and go to the NASS Home Page at: <http://www.usda.gov/nass/>. Select "Today's Reports" or Publications and then Reports by Calendar or Publications and then Search, by Title or Subject.

### E-MAIL SUBSCRIPTION

There are two options for subscribing via e-mail. All NASS reports are available by subscription free of charge direct to your e-mail address. 1) Starting with the NASS Home Page at <http://www.usda.gov/nass/>, click on **Publications**, then click on the **Subscribe by E-mail** button which takes you to the page describing e-mail delivery of reports. Finally, click on **Go to the Subscription Page** and follow the instructions. 2) If you do NOT have Internet access, send an e-mail message to: [usda-reports@usda.mannlib.cornell.edu](mailto:usda-reports@usda.mannlib.cornell.edu). In the body of the message type the word: **list**.

### AUTOFAX ACCESS

NASSFax service is available for some reports from your fax machine. Please call 202-720-2000, using the handset attached to your fax. Respond to the voice prompts. Document 0411 is a list of available reports.

-----  
**PRINTED REPORTS OR DATA PRODUCTS**

CALL OUR TOLL-FREE ORDER DESK: 800-999-6779 (U.S. and Canada)  
Other areas, please call 703-834-0125 FAX: 703-834-0110  
(Visa, MasterCard, check, or money order acceptable for payment.)  
-----

### ASSISTANCE

For **assistance** with general agricultural statistics or further information about NASS or its products or services, contact the **Agricultural Statistics Hotline** at **800-727-9540**, 7:30 a.m. to 4:00 p.m. ET, or e-mail: [nass@nass.usda.gov](mailto:nass@nass.usda.gov).