



# Dairy Products

---

Released November 2, 2000, by the National Agricultural Statistics Service (NASS), Agricultural Statistics Board, U.S. Department of Agriculture. For information on "Dairy Products" call Tony Dorn at (202) 720-9168, office hours 7:00 a.m. to 4:00 p.m. ET.

## September 2000 Highlights

**American type cheese** production totaled 288 million pounds, 2.5 percent above September 1999 but 4.5 percent below August 2000.

**Total cheese** output (excluding cottage cheese) was 657 million pounds, 2.4 percent above September 1999 but 4.3 percent below August 2000.

**Cream cottage cheese** production was 31.7 million pounds, 0.3 percent above September 1999 but 2.0 percent below August 2000.

**Lowfat cottage cheese** production was 31.4 million pounds, 1.3 percent below September 1999 and 0.3 percent below August 2000.

**Butter** production was 91.5 million pounds in September, 0.6 percent below September 1999 but 7.0 percent above August 2000.

**Frozen dessert:** (comparisons with September 1999)

Ice cream, Regular (hard) --- 68.2 million gallons, down 5.7 percent.

Ice cream, Lowfat (total) --- 31.4 million gallons, down 4.8 percent.

Ice cream, Nonfat (hard) --- 2.63 million gallons, down 20.6 percent.

Sherbet (hard) --- 3.87 million gallons, down 9.5 percent.

Frozen Yogurt (total) --- 7.63 million gallons, down 0.9 percent.

**Dry milk products:** (comparisons with September 1999)

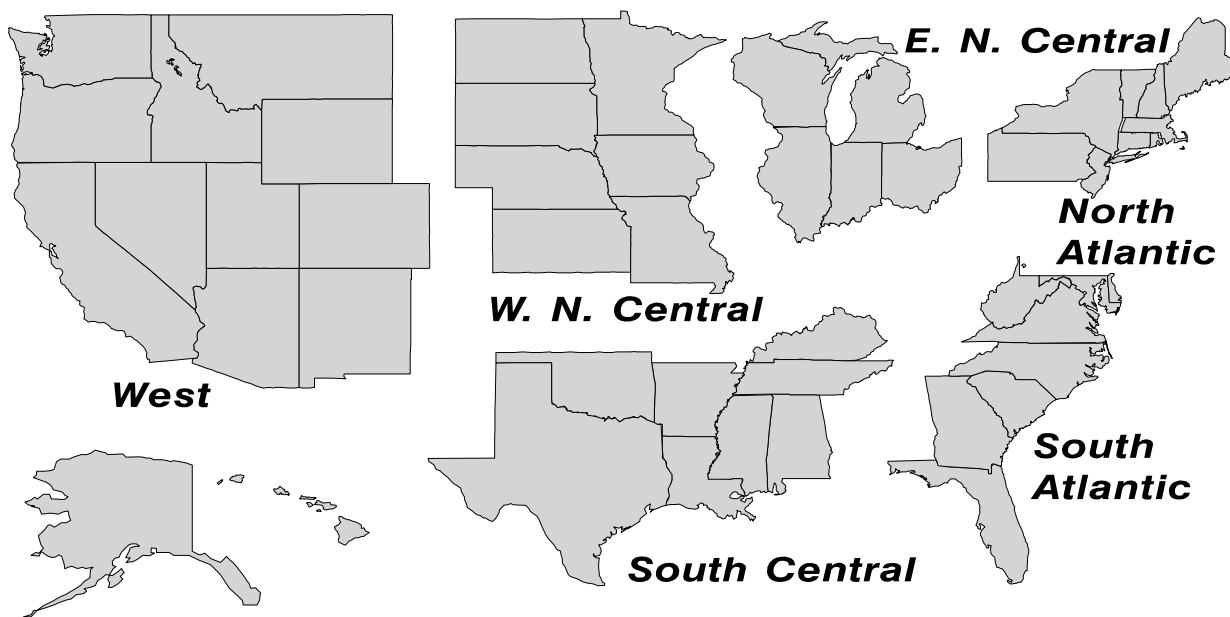
Nonfat dry milk for human food --- 96.8 million pounds, up 1.4 percent.

Dry whole milk --- 6.59 million pounds, down 22.5 percent.

Dry buttermilk --- 3.09 million pounds, down 12.4 percent.

## U. S. Geographic Regions Dairy Products

State totals are not published when fewer than 3 firms have reported or one firm comprises more than 60 percent of the State total. If we are not able to publish a region for confidentiality reasons, it will be combined with other regions when possible. For example, if North Atlantic can not be published, then it will be combined with South Atlantic to publish Atlantic. The West North Central and East North Central will be combined, if necessary, to form North Central. In the event that neither could be published, they may be combined with South Central to publish Central. Some tables will have only limited regions shown, therefore the regions may not add to the United States total.



**Dairy Products: Production by Product,  
United States, September, 1999-2000**

Product	Sep 1999	Aug 2000 <sup>1</sup>	Sep 2000	Change From	
				Sep 1999	Aug 2000
	<i>1,000 Pounds</i>	<i>1,000 Pounds</i>	<i>1,000 Pounds</i>	<i>Percent</i>	<i>Percent</i>
Butter	92,056	85,573	91,532	-0.6	7.0
Cheese					
American Types <sup>2</sup>	281,074	301,572	288,111	2.5	-4.5
Cheddar	219,998	235,156	225,578	2.5	-4.1
Swiss	17,764	18,584	17,520	-1.4	-5.7
Brick and Muenster	7,214	7,861	7,610	5.5	-3.2
Cream and Neufchatel	58,431	63,592	55,881	-4.4	-12.1
Hispanic	7,930	8,526	8,266	4.2	-3.0
Mozzarella	204,774	216,696	210,463	2.8	-2.9
Other Italian Types	48,443	51,301	50,236	3.7	-2.1
Total Italian Types	253,217	267,997	260,699	3.0	-2.7
All Other Types	15,641	18,346	18,846	20.5	2.7
Total	641,271	686,478	656,933	2.4	-4.3
Cottage Cheese, Curd <sup>3</sup>	39,999	40,112	39,682	-0.8	-1.1
Cottage Cheese, Cream <sup>4</sup>	31,588	32,300	31,669	0.3	-2.0
Cottage Cheese, Lowfat <sup>5</sup>	31,772	31,461	31,357	-1.3	-0.3
Canned Evaporated and Condensed Whole Milk	36,340	36,153	35,757	-1.6	-1.1
Dry Whole Milk	8,503	8,029	6,587	-22.5	-18.0
Nonfat Dry Milk, Human	95,473	104,462	96,844	1.4	-7.3
Dry Skim Milk, Animal	392	606	377	-3.8	-37.8
Dry Buttermilk	3,526	2,777	3,089	-12.4	11.2
Yogurt, Plain & Flavored	158,500	155,674	169,440	6.9	8.8
	<i>1,000 Gallons</i>	<i>1,000 Gallons</i>	<i>1,000 Gallons</i>	<i>Percent</i>	<i>Percent</i>
Frozen Products					
Ice Cream, Hard	72,278	79,092	68,166	-5.7	-13.8
Ice Cream, Lowfat, Hard	8,097	8,151	7,841	-3.2	-3.8
Ice Cream, Lowfat, Soft	24,861	30,736	23,541	-5.3	-23.4
Ice Cream, Lowfat, Total	32,958	38,887	31,382	-4.8	-19.3
Ice Cream, Nonfat, Hard	3,309	2,986	2,629	-20.6	-12.0
Sherbet, Hard	4,273	5,155	3,865	-9.5	-25.0
Water and Juice Ices	4,677	5,944	4,281	-8.5	-28.0
Frozen Yogurt, Total	7,697	8,369	7,628	-0.9	-8.9
Regular & Lowfat, Hard	2,479	2,816	2,431	-1.9	-13.7
Nonfat, Hard	1,519	1,308	1,332	-12.3	1.8
Other Frozen Dairy Products	1,299	908	1,002	-22.9	10.4
Mix for Frozen Products					
Ice Cream Mix	40,148	45,890	38,472	-4.2	-16.2
Ice Cream, Lowfat, Mix	18,222	21,655	17,427	-4.4	-19.5
Ice Cream, Nonfat, Mix	1,757	1,800	1,328	-24.4	-26.2
Sherbet Mix	2,847	3,661	2,764	-2.9	-24.5
Yogurt Mix	4,722	4,923	4,487	-5.0	-8.9

<sup>1</sup> Revised.

<sup>2</sup> Includes Cheddar, Colby, Monterey, and Jack.

<sup>3</sup> Mostly used for processing into cream or lowfat cottage cheese.

<sup>4</sup> Fat content 4 percent or more.

<sup>5</sup> Fat content less than 4 percent.

**Whey and Modified Whey Products: Production, Stocks,  
and Prices, United States, September, 1999-2000**

Product	Sep 1999	Aug 2000 <sup>1</sup>	Sep 2000	Change From	
				Sep 1999	Aug 2000
<b>Production</b>					
	<i>1,000 Pounds</i>	<i>1,000 Pounds</i>	<i>1,000 Pounds</i>	<i>Percent</i>	<i>Percent</i>
Condensed Whey, Solids Content <sup>2</sup>					
Sweet-Type, Human	8,560	8,262	7,152	-16.4	-13.4
Sweet-Type, Animal	1,406	1,168	1,022	-27.3	-12.5
Dry Whey Products					
Dry Whey, Human	84,693	89,772	81,170	-4.2	-9.6
Dry Whey, Animal	6,836	8,310	7,847	14.8	-5.6
Dry Whey, Total	91,529	98,082	89,017	-2.7	-9.2
Reduced Lactose and Minerals					
Human Food	6,086	4,477	3,772	-38.0	-15.7
Animal Feed	2,925	3,122	2,996	2.4	-4.0
Lactose, Human and Animal	38,823	39,636	40,859	5.2	3.1
Whey					
Solids in Wet Blends, Animal	2,914	3,384	2,962	1.6	-12.5
Protein Concentrate, Human	26,354	29,403	27,406	4.0	-6.8
Protein Concentrate, Animal	3,798	3,907	3,784	-0.4	-3.1
<b>Manufacturers' Stocks End-of-Month <sup>3</sup></b>					
	<i>1,000 Pounds</i>	<i>1,000 Pounds</i>	<i>1,000 Pounds</i>	<i>Percent</i>	<i>Percent</i>
Dry Whey Products					
Dry Whey, Human	46,413	46,607	40,935	-11.8	-12.2
Dry Whey, Animal	8,970	12,151	11,694	30.4	-3.8
Reduced Lactose and Minerals					
Human and Animal <sup>4</sup>	12,709	10,708	8,264	-35.0	-22.8
Lactose, Human and Animal	17,062	25,963	26,197	53.5	0.9
Whey Protein Concentrate, Human	16,010	17,451	19,187	19.8	9.9
Whey Protein Concentrate, Animal	1,059	1,493	1,977	86.7	32.4
<b>Manufacturers' Selling Price <sup>5</sup></b>					
	<i>Cents per Pound</i>	<i>Cents per Pound</i>	<i>Cents per Pound</i>	<i>Cents Change</i>	<i>Cents Change</i>
Dry Whey, Animal	16.8	17.7	16.5	-0.3	-1.2

<sup>1</sup> Revised.

<sup>2</sup> Final marketable product only. Does not include quantity used or shipped to another plant for further processing into dry whey or modified whey products.

<sup>3</sup> Stocks held by manufacturers at all points and in transit.

<sup>4</sup> Reduced lactose and minerals stocks combined to avoid disclosure of individual operations.

<sup>5</sup> Prices for bulk goods, f.o.b. plant. Average monthly prices reported by firms.

**Dairy Products: Production by Product and Month,  
United States, 1999-2000 <sup>1</sup>**

Product and Month	By Month			Cumulative		
	1999	2000	Change From 1999	1999	2000	Change From 1999
	<i>1,000 Pounds</i>	<i>1,000 Pounds</i>	<i>Percent</i>	<i>1,000 Pounds</i>	<i>1,000 Pounds</i>	<i>Percent</i>
<b>Total Cheese</b>						
Jan	634,037	686,908	8.3	634,037	686,908	8.3
Feb	592,688	645,567	8.9	1,226,725	1,332,475	8.6
Mar	697,446	717,926	2.9	1,924,171	2,050,401	6.6
Apr	669,670	693,455	3.6	2,593,841	2,743,856	5.8
May	675,002	737,066	9.2	3,268,843	3,480,922	6.5
Jun	669,448	697,668	4.2	3,938,291	4,178,590	6.1
Jul	649,811	690,026	6.2	4,588,102	4,868,616	6.1
Aug	648,462	686,478	5.9	5,236,564	5,555,094	6.1
Sep	641,271	656,933	2.4	5,877,835	6,212,027	5.7
Oct	671,932			6,549,767		
Nov	688,450			7,238,217		
Dec	705,815			7,944,032		
<b>American Cheese</b>						
Jan	293,287	316,717	8.0	293,287	316,717	8.0
Feb	275,844	302,331	9.6	569,131	619,048	8.8
Mar	317,731	320,203	0.8	886,862	939,251	5.9
Apr	316,483	312,493	-1.3	1,203,345	1,251,744	4.0
May	312,488	326,482	4.5	1,515,833	1,578,226	4.1
Jun	294,025	310,625	5.6	1,809,858	1,888,851	4.4
Jul	299,376	321,680	7.5	2,109,234	2,210,531	4.8
Aug	293,117	301,572	2.9	2,402,351	2,512,103	4.6
Sep	281,074	288,111	2.5	2,683,425	2,800,214	4.4
Oct	295,302			2,978,727		
Nov	288,102			3,266,829		
Dec	309,719			3,576,548		
<b>Cheddar Cheese</b>						
Jan	236,284	248,997	5.4	236,284	248,997	5.4
Feb	216,974	236,410	9.0	453,258	485,407	7.1
Mar	254,183	254,397	0.1	707,441	739,804	4.6
Apr	255,100	250,968	-1.6	962,541	990,772	2.9
May	251,037	259,922	3.5	1,213,578	1,250,694	3.1
Jun	231,429	241,654	4.4	1,445,007	1,492,348	3.3
Jul	232,586	252,337	8.5	1,677,593	1,744,685	4.0
Aug	226,150	235,156	4.0	1,903,743	1,979,841	4.0
Sep	219,998	225,578	2.5	2,123,741	2,205,419	3.8
Oct	233,513			2,357,254		
Nov	218,471			2,575,725		
Dec	241,142			2,816,867		

See footnotes at end of table.

--continued

**Dairy Products: Production by Product and Month,  
United States, 1999-2000 <sup>1</sup> (continued)**

Product and Month	By Month			Cumulative		
	1999	2000	Change From 1999	1999	2000	Change From 1999
	<i>1,000 Pounds</i>	<i>1,000 Pounds</i>	<i>Percent</i>	<i>1,000 Pounds</i>	<i>1,000 Pounds</i>	<i>Percent</i>
<b>Italian Cheese</b>						
Jan	247,977	276,753	11.6	247,977	276,753	11.6
Feb	232,383	258,511	11.2	480,360	535,264	11.4
Mar	276,676	287,205	3.8	757,036	822,469	8.6
Apr	258,607	281,115	8.7	1,015,643	1,103,584	8.7
May	263,594	303,164	15.0	1,279,237	1,406,748	10.0
Jun	267,176	276,824	3.6	1,546,413	1,683,572	8.9
Jul	254,912	263,216	3.3	1,801,325	1,946,788	8.1
Aug	253,239	267,997	5.8	2,054,564	2,214,785	7.8
Sep	253,217	260,699	3.0	2,307,781	2,475,484	7.3
Oct	263,015			2,570,796		
Nov	286,047			2,856,843		
Dec	285,804			3,142,647		
<b>Mozzarella Cheese</b>						
Jan	196,882	215,207	9.3	196,882	215,207	9.3
Feb	186,524	204,909	9.9	383,406	420,116	9.6
Mar	221,945	227,236	2.4	605,351	647,352	6.9
Apr	209,947	224,604	7.0	815,298	871,956	6.9
May	210,678	243,510	15.6	1,025,976	1,115,466	8.7
Jun	212,572	220,414	3.7	1,238,548	1,335,880	7.9
Jul	210,061	214,759	2.2	1,448,609	1,550,639	7.0
Aug	206,074	216,696	5.2	1,654,683	1,767,335	6.8
Sep	204,774	210,463	2.8	1,859,457	1,977,798	6.4
Oct	206,589			2,066,046		
Nov	226,116			2,292,162		
Dec	226,670			2,518,832		
<b>Other Italian</b>						
Jan	51,095	61,546	20.5	51,095	61,546	20.5
Feb	45,859	53,602	16.9	96,954	115,148	18.8
Mar	54,731	59,969	9.6	151,685	175,117	15.4
Apr	48,660	56,511	16.1	200,345	231,628	15.6
May	52,916	59,654	12.7	253,261	291,282	15.0
Jun	54,604	56,410	3.3	307,865	347,692	12.9
Jul	44,851	48,457	8.0	352,716	396,149	12.3
Aug	47,165	51,301	8.8	399,881	447,450	11.9
Sep	48,443	50,236	3.7	448,324	497,686	11.0
Oct	56,426			504,750		
Nov	59,931			564,681		
Dec	59,134			623,815		

See footnotes at end of table.

--continued

**Dairy Products: Production by Product and Month,  
United States, 1999-2000 <sup>1</sup> (continued)**

Product and Month	By Month			Cumulative		
	1999	2000	Change From 1999	1999	2000	Change From 1999
	<i>1,000 Pounds</i>	<i>1,000 Pounds</i>	<i>Percent</i>	<i>1,000 Pounds</i>	<i>1,000 Pounds</i>	<i>Percent</i>
<b>Butter</b>						
Jan	129,016	142,292	10.3	129,016	142,292	10.3
Feb	119,384	130,259	9.1	248,400	272,551	9.7
Mar	125,357	122,472	-2.3	373,757	395,023	5.7
Apr	114,321	115,449	1.0	488,078	510,472	4.6
May	110,894	111,245	0.3	598,972	621,717	3.8
Jun	94,593	91,784	-3.0	693,565	713,501	2.9
Jul	84,804	87,015	2.6	778,369	800,516	2.8
Aug	78,242	85,573	9.4	856,611	886,089	3.4
Sep	92,056	91,532	-0.6	948,667	977,621	3.1
Oct	103,097			1,051,764		
Nov	103,506			1,155,270		
Dec	119,772			1,275,042		
<b>Nonfat Dry Milk, Human</b>						
Jan	120,545	133,558	10.8	120,545	133,558	10.8
Feb	115,827	133,111	14.9	236,372	266,669	12.8
Mar	128,778	139,539	8.4	365,150	406,208	11.2
Apr	133,388	147,042	10.2	498,538	553,250	11.0
May	136,717	137,872	0.8	635,255	691,122	8.8
Jun	118,626	128,318	8.2	753,881	819,440	8.7
Jul	99,276	121,657	22.5	853,157	941,097	10.3
Aug	95,764	104,462	9.1	948,921	1,045,559	10.2
Sep	95,473	96,844	1.4	1,044,394	1,142,403	9.4
Oct	105,269			1,149,663		
Nov	102,432			1,252,095		
Dec	126,095			1,378,190		
<b>Total Dry Whey <sup>2</sup></b>						
Jan	96,248	109,864	14.1	96,248	109,864	14.1
Feb	90,009	102,803	14.2	186,257	212,667	14.2
Mar	102,217	109,452	7.1	288,474	322,119	11.7
Apr	98,089	100,499	2.5	386,563	422,618	9.3
May	102,521	107,440	4.8	489,084	530,058	8.4
Jun	98,945	104,687	5.8	588,029	634,745	7.9
Jul	97,906	100,320	2.5	685,935	735,065	7.2
Aug	98,929	98,082	-0.9	784,864	833,147	6.2
Sep	91,529	89,017	-2.7	876,393	922,164	5.2
Oct	93,904			970,297		
Nov	92,533			1,062,830		
Dec	100,981			1,163,811		

See footnotes at end of table.

--continued

**Dairy Products: Production by Product and Month,  
United States, 1999-2000 <sup>1</sup> (continued)**

Product and Month	By Month			Cumulative		
	1999	2000	Change From 1999	1999	2000	Change From 1999
	<i>1,000 Pounds</i>	<i>1,000 Pounds</i>	<i>Percent</i>	<i>1,000 Pounds</i>	<i>1,000 Pounds</i>	<i>Percent</i>
<b>Cream Cottage Cheese</b>						
Jan	27,065	27,627	2.1	27,065	27,627	2.1
Feb	27,624	28,243	2.2	54,689	55,870	2.2
Mar	31,646	31,317	-1.0	86,335	87,187	1.0
Apr	31,182	28,725	-7.9	117,517	115,912	-1.4
May	31,205	31,515	1.0	148,722	147,427	-0.9
Jun	31,175	31,846	2.2	179,897	179,273	-0.3
Jul	31,896	30,029	-5.9	211,793	209,302	-1.2
Aug	32,065	32,300	0.7	243,858	241,602	-0.9
Sep	31,588	31,669	0.3	275,446	273,271	-0.8
Oct	29,973			305,419		
Nov	28,972			334,391		
Dec	27,190			361,581		
<b>Lowfat Cottage Cheese</b>						
Jan	27,712	28,203	1.8	27,712	28,203	1.8
Feb	28,160	29,381	4.3	55,872	57,584	3.1
Mar	34,090	32,273	-5.3	89,962	89,857	-0.1
Apr	29,694	28,936	-2.6	119,656	118,793	-0.7
May	29,994	32,172	7.3	149,650	150,965	0.9
Jun	32,274	31,646	-1.9	181,924	182,611	0.4
Jul	31,910	29,486	-7.6	213,834	212,097	-0.8
Aug	31,850	31,461	-1.2	245,684	243,558	-0.9
Sep	31,772	31,357	-1.3	277,456	274,915	-0.9
Oct	29,327			306,783		
Nov	27,041			333,824		
Dec	26,516			360,340		
	<i>1,000 Gallons</i>	<i>1,000 Gallons</i>	<i>Percent</i>	<i>1,000 Gallons</i>	<i>1,000 Gallons</i>	<i>Percent</i>
<b>Ice Cream, Hard</b>						
Jan	60,529	60,037	-0.8	60,529	60,037	-0.8
Feb	64,996	67,755	4.2	125,525	127,792	1.8
Mar	77,201	81,075	5.0	202,726	208,867	3.0
Apr	77,447	78,731	1.7	280,173	287,598	2.7
May	76,906	83,094	8.0	357,079	370,692	3.8
Jun	90,063	86,856	-3.6	447,142	457,548	2.3
Jul	86,705	82,562	-4.8	533,847	540,110	1.2
Aug	81,749	79,092	-3.3	615,596	619,202	0.6
Sep	72,278	68,166	-5.7	687,874	687,368	-0.1
Oct	62,290			750,164		
Nov	58,994			809,158		
Dec	57,043			866,201		

See footnotes at end of table.

--continued



**Dairy Products: Production by Product and Month,  
United States, 1999-2000 <sup>1</sup> (continued)**

Product and Month	By Month			Cumulative		
	1999	2000	Change From 1999	1999	2000	Change From 1999
	<i>1,000 Gallons</i>	<i>1,000 Gallons</i>	<i>Percent</i>	<i>1,000 Gallons</i>	<i>1,000 Gallons</i>	<i>Percent</i>
<b>Ice Cream, Lowfat</b>						
Jan	23,869	20,469	-14.2	23,869	20,469	-14.2
Feb	26,986	27,171	0.7	50,855	47,640	-6.3
Mar	34,290	34,730	1.3	85,145	82,370	-3.3
Apr	35,727	33,776	-5.5	120,872	116,146	-3.9
May	38,680	38,621	-0.2	159,552	154,767	-3.0
Jun	41,846	41,615	-0.6	201,398	196,382	-2.5
Jul	40,793	40,084	-1.7	242,191	236,466	-2.4
Aug	39,565	38,887	-1.7	281,756	275,353	-2.3
Sep	32,958	31,382	-4.8	314,714	306,735	-2.5
Oct	28,643			343,357		
Nov	25,543			368,900		
Dec	24,751			393,651		
<b>Ice Cream, NF, Hard</b>						
Jan	2,814	2,457	-12.7	2,814	2,457	-12.7
Feb	2,718	2,550	-6.2	5,532	5,007	-9.5
Mar	3,124	3,165	1.3	8,656	8,172	-5.6
Apr	2,779	3,138	12.9	11,435	11,310	-1.1
May	3,270	2,868	-12.3	14,705	14,178	-3.6
Jun	3,317	3,101	-6.5	18,022	17,279	-4.1
Jul	3,434	2,724	-20.7	21,456	20,003	-6.8
Aug	3,039	2,986	-1.7	24,495	22,989	-6.1
Sep	3,309	2,629	-20.6	27,804	25,618	-7.9
Oct	2,551			30,355		
Nov	2,034			32,389		
Dec	2,320			34,709		
<b>Sherbet, Hard</b>						
Jan	3,298	3,312	0.4	3,298	3,312	0.4
Feb	3,736	3,663	-2.0	7,034	6,975	-0.8
Mar	4,781	4,591	-4.0	11,815	11,566	-2.1
Apr	4,702	4,690	-0.3	16,517	16,256	-1.6
May	5,036	5,569	10.6	21,553	21,825	1.3
Jun	5,683	5,316	-6.5	27,236	27,141	-0.3
Jul	5,322	4,777	-10.2	32,558	31,918	-2.0
Aug	5,154	5,155	0.0	37,712	37,073	-1.7
Sep	4,273	3,865	-9.5	41,985	40,938	-2.5
Oct	3,532			45,517		
Nov	3,446			48,963		
Dec	2,999			51,962		

See footnotes at end of table.

--continued

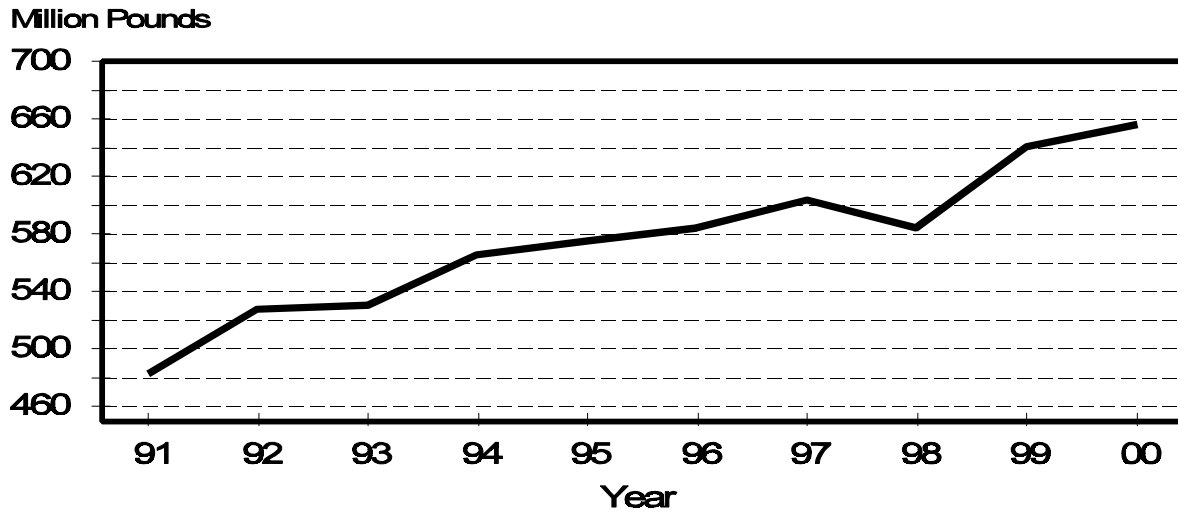
**Dairy Products: Production by Product and Month,  
United States, 1999-2000 <sup>1</sup> (continued)**

Product and Month	By Month			Cumulative		
	1999	2000	Change From 1999	1999	2000	Change From 1999
	<i>1,000 Gallons</i>	<i>1,000 Gallons</i>	<i>Percent</i>	<i>1,000 Gallons</i>	<i>1,000 Gallons</i>	<i>Percent</i>
Frozen Yogurt						
Jan	6,659	5,467	-17.9	6,659	5,467	-17.9
Feb	7,876	6,851	-13.0	14,535	12,318	-15.3
Mar	9,325	8,359	-10.4	23,860	20,677	-13.3
Apr	9,267	7,771	-16.1	33,127	28,448	-14.1
May	9,405	9,076	-3.5	42,532	37,524	-11.8
Jun	9,694	8,549	-11.8	52,226	46,073	-11.8
Jul	8,461	8,582	1.4	60,687	54,655	-9.9
Aug	8,737	8,369	-4.2	69,424	63,024	-9.2
Sep	7,697	7,628	-0.9	77,121	70,652	-8.4
Oct	6,227			83,348		
Nov	5,661			89,009		
Dec	5,666			94,675		

<sup>1</sup> August 2000 data revised.

<sup>2</sup> Excludes all modified dry whey products.

**September Total Cheese Production  
United States**



**Total Cheese, Excluding Cottage Cheese: Production by  
State and United States, September 1999-2000**

State	Sep 1999	Aug <sup>1</sup> 2000	Sep 2000	Change From	
				Sep 1999	Aug 2000
	<i>1,000 Pounds</i>	<i>1,000 Pounds</i>	<i>1,000 Pounds</i>	<i>Percent</i>	<i>Percent</i>
CA	116,029	126,020	123,431	6.4	-2.1
ID	44,512	47,402	47,342	6.4	-0.1
IL	7,877	8,203	8,081	2.6	-1.5
IA	21,605	21,085	17,648	-18.3	-16.3
MA	79	166	82	3.8	-50.6
MN	55,023	53,682	53,074	-3.5	-1.1
MO	13,724	11,621	9,350	-31.9	-19.5
NY	54,628	63,482	56,974	4.3	-10.3
ND	1,160	1,311	1,089	-6.1	-16.9
OH	10,623	11,145	10,657	0.3	-4.4
PA	30,307	31,521	27,655	-8.8	-12.3
SD	11,333	11,671	11,199	-1.2	-4.0
UT	6,348	5,801	6,520	2.7	12.4
WA	12,132	13,595	12,616	4.0	-7.2
WI	177,684	186,848	182,724	2.8	-2.2
Oth Sts <sup>2</sup>	78,207	92,925	88,491	13.1	-4.8
US	641,271	686,478	656,933	2.4	-4.3
N Atlantic	98,215	110,470	98,582	0.4	-10.8
S Atlantic	3,718	2,904	3,269	-12.1	12.6
E N Central	208,775	219,832	214,163	2.6	-2.6
W N Central	108,508	107,035	100,056	-7.8	-6.5
S Central	4,358	4,026	4,919	12.9	22.2
West	217,697	242,211	235,944	8.4	-2.6

<sup>1</sup> Revised.

<sup>2</sup> States not shown when fewer than 3 plants reported or individual plant operations could be disclosed. Percent change shown only when comparable States are included in the calculation.

**American Cheese: Production by State and United States, September 1999-2000**

State	Sep 1999	Aug <sup>1</sup> 2000	Sep 2000	Change From	
				Sep 1999	Aug 2000
	<i>1,000 Pounds</i>	<i>1,000 Pounds</i>	<i>1,000 Pounds</i>	<i>Percent</i>	<i>Percent</i>
CA	48,713	61,445	55,027	13.0	-10.4
ID	38,887	40,835	40,892	5.2	0.1
IA	10,155	10,717	10,613	4.5	-1.0
MN	53,950	51,405	50,083	-7.2	-2.6
NY	5,962	7,308	5,821	-2.4	-20.3
ND	1,160	1,311	1,089	-6.1	-16.9
OH	2,339	2,054	1,762	-24.7	-14.2
OR	5,086	5,160	5,112	0.5	-0.9
SD	5,158	5,915	5,632	9.2	-4.8
UT	3,425	2,515	3,569	4.2	41.9
WA	9,948	11,896	10,988	10.5	-7.6
WI	74,003	72,900	72,424	-2.1	-0.7
Oth Sts <sup>2</sup>	22,288	28,111	25,099	12.6	-10.7
US	281,074	301,572	288,111	2.5	-4.5
Atlantic	9,959	13,835	10,524	5.7	-23.9
E N Central	77,918	76,582	75,708	-2.8	-1.1
W N Central	73,383	72,096	67,420	-8.1	-6.5
S Central	3,992	3,509	4,522	13.3	28.9
West	115,822	135,550	129,937	12.2	-4.1

<sup>1</sup> Revised.

<sup>2</sup> States not shown when fewer than 3 plants reported or individual plant operations could be disclosed. Percent change shown only when comparable States are included in the calculation.

**Cheddar Cheese: Production by State and United States, September 1999-2000**

State	Sep 1999	Aug <sup>1</sup> 2000	Sep 2000	Change From	
				Sep 1999	Aug 2000
	<i>1,000 Pounds</i>	<i>1,000 Pounds</i>	<i>1,000 Pounds</i>	<i>Percent</i>	<i>Percent</i>
CA	35,458	48,458	41,643	17.4	-14.1
ID	24,750	19,304	20,189	-18.4	4.6
MN	50,050	47,652	46,515	-7.1	-2.4
NY	5,735	7,183	5,759	0.4	-19.8
WI	59,029	60,100	59,900	1.5	-0.3
Oth Sts <sup>2</sup>	44,976	52,459	51,572	14.7	-1.7
US	219,998	235,156	225,578	2.5	-4.1
Atlantic	9,415	13,346	10,149	7.8	-24.0
E N Cen	60,892	61,773	61,415	0.9	-0.6
W N Cen	60,302	58,389	57,080	-5.3	-2.2
S Cen	3,992	3,504	4,522	13.3	29.1
West	85,397	98,144	92,412	8.2	-5.8

<sup>1</sup> Revised.

<sup>2</sup> States not shown when fewer than 3 plants reported or individual plant operations could be disclosed. Percent change shown only when comparable States are included in the calculation.

**Mozzarella Cheese: Production by State and United States, September 1999-2000**

State	Sep 1999	Aug <sup>1</sup> 2000	Sep 2000	Change From	
				Sep 1999	Aug 2000
	<i>1,000 Pounds</i>	<i>1,000 Pounds</i>	<i>1,000 Pounds</i>	<i>Percent</i>	<i>Percent</i>
CA	51,717	50,247	52,824	2.1	5.1
ID	1,036	2,580	2,544	145.6	-1.4
IL	546	445	392	-28.2	-11.9
NY	19,456	20,512	19,973	2.7	-2.6
SD	5,691	5,074	4,885	-14.2	-3.7
WI	55,905	59,515	57,840	3.5	-2.8
Oth Sts <sup>2</sup>	70,423	78,323	72,005	2.2	-8.1
US	204,774	216,696	210,463	2.8	-2.9
Atlantic	43,917	43,247	40,423	-8.0	-6.5
E N Central	67,174	71,773	69,126	2.9	-3.7
W N Central	15,933	17,356	18,181	14.1	4.8
West	77,750	84,320	82,733	6.4	-1.9

<sup>1</sup> Revised.

<sup>2</sup> States not shown when fewer than 3 plants reported or individual plant operations could be disclosed. Percent change shown only when comparable States are included in the calculation.

**Butter: Production by State and United States, September 1999-2000**

State	Sep 1999	Aug <sup>1</sup> 2000	Sep 2000	Change From	
				Sep 1999	Aug 2000
	<i>1,000 Pounds</i>	<i>1,000 Pounds</i>	<i>1,000 Pounds</i>	<i>Percent</i>	<i>Percent</i>
CA	25,482	23,515	27,113	6.4	15.3
MN	3,466	3,387	3,329	-4.0	-1.7
NY	1,716	1,402	1,197	-30.2	-14.6
ND	409	347	390	-4.6	12.4
PA	8,250	8,211	9,151	10.9	11.4
WA	12,543	10,442	10,579	-15.7	1.3
WI	18,985	16,694	18,110	-4.6	8.5
Oth Sts <sup>2</sup>	21,205	21,575	21,663	2.2	0.4
US	92,056	85,573	91,532	-0.6	7.0
N Atlantic	12,867	13,835	14,149	10.0	2.3
E N Central	21,434	18,147	20,381	-4.9	12.3
W N Central	9,316	9,351	9,289	-0.3	-0.7
West	41,949	37,956	41,253	-1.7	8.7

<sup>1</sup> Revised.

<sup>2</sup> States not shown when fewer than 3 plants reported or individual plant operations could be disclosed. Percent change shown only when comparable States are included in the calculation.

**Nonfat Dry Milk, Human: Production by State  
and United States, September 1999-2000**

State	Sep 1999	Aug <sup>1</sup> 2000	Sep 2000	Change From	
				Sep 1999	Aug 2000
	<i>1,000 Pounds</i>	<i>1,000 Pounds</i>	<i>1,000 Pounds</i>	<i>Percent</i>	<i>Percent</i>
CA	49,831	50,380	51,972	4.3	3.2
MN & WI	1,370	1,772	1,429	4.3	-19.4
NM	4,014	4,068	4,068	1.3	
WA	15,549	15,673	13,731	-11.7	-12.4
Oth Sts <sup>2</sup>	24,709	32,569	25,644	3.8	-21.3
US	95,473	104,462	96,844	1.4	-7.3
Atlantic	12,659	6,163	3,536	-72.1	-42.6
E N Central	1,750	2,343	733	-58.1	-68.7
W N Central	4,972	7,384	7,251	45.8	-1.8
S Central	1,254	6,349	6,349	406.3	
West	74,838	82,223	78,975	5.5	-4.0

<sup>1</sup> Revised.

<sup>2</sup> States not shown when fewer than 3 plants reported or individual plant operations could be disclosed. Percent change shown only when comparable States are included in the calculation.

**Dry Whey, Human: Production by State  
and United States, September 1999-2000**

State	Sep 1999	Aug <sup>1</sup> 2000	Sep 2000	Change From	
				Sep 1999	Aug 2000
	<i>1,000 Pounds</i>	<i>1,000 Pounds</i>	<i>1,000 Pounds</i>	<i>Percent</i>	<i>Percent</i>
CA	8,758	10,647	10,617	21.2	-0.3
MN	6,943	6,584	6,342	-8.7	-3.7
NY	9,847	9,830	8,135	-17.4	-17.2
PA	7,653	8,736	6,599	-13.8	-24.5
UT	1,104	640	939	-14.9	46.7
WA	7,901	7,432	6,366	-19.4	-14.3
WI	20,853	24,400	22,500	7.9	-7.8
Oth Sts <sup>2</sup>	21,634	21,503	19,672	-9.1	-8.5
US	84,693	89,772	81,170	-4.2	-9.6
Atlantic	17,500	18,566	14,734	-15.8	-20.6
Central	36,911	42,034	39,852	8.0	-5.2
West	30,282	29,172	26,584	-12.2	-8.9

<sup>1</sup> Revised.

<sup>2</sup> States not shown when fewer than 3 plants reported or individual plant operations could be disclosed. Percent change shown only when comparable States are included in the calculation.

**Lactose: Production by State and  
United States, September 1999-2000**

State	Sep 1999	Aug <sup>1</sup> 2000	Sep 2000	Change From	
				Sep 1999	Aug 2000
	<i>1,000 Pounds</i>	<i>1,000 Pounds</i>	<i>1,000 Pounds</i>	<i>Percent</i>	<i>Percent</i>
MN	8,110	8,001	8,020	-1.1	0.2
WI	8,505	8,090	7,337	-13.7	-9.3
Oth Sts <sup>2</sup>	22,208	23,545	25,502	14.8	8.3
US	38,823	39,636	40,859	5.2	3.1
E N Central	9,420	8,864	8,193	-13.0	-7.6
W N Central	13,206	13,697	13,956	5.7	1.9
West	15,037	16,277	18,115	20.5	11.3

<sup>1</sup> Revised.

<sup>2</sup> States not shown when fewer than 3 plants reported or individual plant operations could be disclosed. Percent change shown only when comparable States are included in the calculation.

**Whey Protein Concentrate, Human: Production by State  
and United States, September 1999-2000**

State	Sep 1999	Aug <sup>1</sup> 2000	Sep 2000	Change From	
				Sep 1999	Aug 2000
	<i>1,000 Pounds</i>	<i>1,000 Pounds</i>	<i>1,000 Pounds</i>	<i>Percent</i>	<i>Percent</i>
CA	8,110	8,681	8,631	6.4	-0.6
MN	4,244	4,429	4,366	2.9	-1.4
WI	3,683	4,020	3,636	-1.3	-9.6
Oth Sts <sup>2</sup>	10,317	12,273	10,773	4.4	-12.2
US	26,354	29,403	27,406	4.0	-6.8

<sup>1</sup> Revised.

<sup>2</sup> States not shown when fewer than 3 plants reported or individual plant operations could be disclosed. Percent change shown only when comparable States are included in the calculation.

**Ice Cream, Hard: Production by State and United States, September 1999-2000**

State	Sep 1999	Aug <sup>1</sup> 2000	Sep 2000	Change From	
				Sep 1999	Aug 2000
	<i>1,000 Gallons</i>	<i>1,000 Gallons</i>	<i>1,000 Gallons</i>	<i>Percent</i>	<i>Percent</i>
CA	9,305	11,444	10,360	11.3	-9.5
FL	1,993	1,500	1,700	-14.7	13.3
IL	3,160	2,643	2,490	-21.2	-5.8
IN	6,691	5,626	5,679	-15.1	0.9
ME	87	136	87		-36.0
MD	1,483	2,086	1,483		-28.9
MA	3,834	5,756	4,734	23.5	-17.8
MI	1,619	2,001	1,845	14.0	-7.8
MN	4,186	3,726	3,564	-14.9	-4.3
NH	39	49	27	-30.8	-44.9
NM	219	219	219		
NY	2,422	2,800	2,100	-13.3	-25.0
NC	1,789	1,693	1,196	-33.1	-29.4
ND	104	137	80	-23.1	-41.6
OH	2,868	3,350	2,807	-2.1	-16.2
OR	743	1,050	780	5.0	-25.7
PA	4,599	3,635	3,228	-29.8	-11.2
SD	2	3	2		-33.3
TN	1,436	1,574	1,518	5.7	-3.6
TX	4,986	5,261	4,086	-18.1	-22.3
UT	982	1,163	1,082	10.2	-7.0
WA	1,871	1,894	1,134	-39.4	-40.1
Oth Sts <sup>2</sup>	17,860	21,346	17,965	0.6	-15.8
US	72,278	79,092	68,166	-5.7	-13.8
N Atlantic	13,152	15,065	12,281	-6.6	-18.5
S Atlantic	7,881	6,782	5,472	-30.6	-19.3
E N Central	15,170	14,570	13,641	-10.1	-6.4
W N Central	9,803	12,637	11,311	15.4	-10.5
S Central	10,013	11,231	9,376	-6.4	-16.5
West	16,259	18,807	16,085	-1.1	-14.5

<sup>1</sup> Revised.

<sup>2</sup> States not shown when fewer than 3 plants reported or individual plant operations could be disclosed. Percent change shown only when comparable States are included in the calculation.



**Canned Milk and Dry Milk Products: Manufacturers' shipments,  
Stocks, and Selling Prices, September, 1999-2000**

Product	Sep 1999	Aug 2000 <sup>1</sup>	Sep 2000	Change From	
				Sep 1999	Aug 2000
<b>Manufacturers' Shipments <sup>2</sup></b>					
	<i>1,000 Pounds</i>	<i>1,000 Pounds</i>	<i>1,000 Pounds</i>	<i>Percent</i>	<i>Percent</i>
Dry Whole Milk	9,454	8,099	5,184	-45.2	-36.0
Nonfat Dry Milk, Human	86,362	117,771	111,388	29.0	-5.4
Dry Skim Milk, Animal	562	662	516	-8.2	-22.1
Dry Buttermilk, Human	3,766	2,935	3,046	-19.1	3.8
<b>Manufacturers' Stocks End-of-Month <sup>3</sup></b>					
	<i>1,000 Pounds</i>	<i>1,000 Pounds</i>	<i>1,000 Pounds</i>	<i>Percent</i>	<i>Percent</i>
Canned Evaporated and Condensed Whole Milk	57,671	65,312	60,695	5.2	-7.1
Dry Whole Milk	6,048	7,665	6,429	6.3	-16.1
Nonfat Dry Milk, Human	96,601	152,106	128,712	33.2	-15.4
Dry Skim Milk, Animal	1,210	1,122	919	-24.0	-18.1
Dry Buttermilk, Total	5,595	2,876	2,772	-50.5	-3.6
<b>Manufacturers' Selling Price <sup>4</sup></b>					
	<i>Cents per Pound</i>	<i>Cents per Pound</i>	<i>Cents per Pound</i>	<i>Cents Change</i>	<i>Cents Change</i>
Dry Whole Milk	131.34	120.47	119.48	-11.86	-0.99
Dry Skim Milk, Animal	59.00	57.83	54.12	-4.88	-3.71
Dry Buttermilk, Human	73.48	91.39	93.47	19.99	2.08

<sup>1</sup> Revised.

<sup>2</sup> For dry products, shipments of bulk goods only.

<sup>3</sup> Stocks held by manufacturers at all points and in transit.

<sup>4</sup> Prices for bulk goods, f.o.b. plant. Average monthly prices reported by firms, weighted by shipments of each firm.

**Procedures and Reliability:** Estimates included in this report are based on data provided each month by manufacturers of these products. In 32 States, the State Departments of Agriculture assist in collection of data, which eliminates duplicate reporting and reduces respondent burden. Data are collected by mail, personal and telephone interviews following the close of each month. There were 1,258 manufacturers that made one or more products in 1999. Each month, reports are generally received from all dairy plants in States with small numbers of plants. In States with large numbers of plants, survey procedures are designed to obtain monthly reports from all large plants and from a sample of small plants. Monthly estimates are based upon returns from about 70 percent of the plants which account for 70 to 90 percent of the total production of major dairy products.

**Revision Policy:** Monthly estimates are subject to revision the month following the preliminary estimates. Annual estimates are published in the "**Dairy Products**" report published each April which includes any revisions made to current and previous year. In preparing the annual report, an attempt is made to get information from all plants.

The next "Dairy Products" report will be released at 3 p.m. on December 4, 2000.

The United States Department of Agriculture (USDA) prohibits discrimination in all its programs on the basis of race, color, national origin, gender, religion, age, disability, political beliefs, sexual orientation, and marital or family status. (Not all prohibited bases apply to all programs.) Persons with disabilities who require alternative means for communication of program information (braille, large print, audiotape, etc.) should contact the USDA's TARGET Center at 202-720-2600 (voice and TDD).

To file a complaint of discrimination, write USDA, Director, Office of Civil Rights, Room 326-W, Whitten Building, 14th and Independence Avenue, SW, Washington, D.C., 20250-9410, or call 202-720-5964 (voice or TDD). USDA is an equal opportunity provider and employer.

## ACCESS TO REPORTS!!

---

For your convenience, there are several ways to obtain NASS reports, data products, and services:

### INTERNET ACCESS

All NASS reports are available free of charge on the worldwide Internet. For access, connect to the Internet and go to the NASS Home Page at: <http://www.usda.gov/nass/>. Select "Today's Reports" or Publications and then Reports by Calendar or Publications and then Search, by Title or Subject.

### E-MAIL SUBSCRIPTION

There are two options for subscribing via e-mail. All NASS reports are available by subscription free of charge direct to your e-mail address. 1) Starting with the NASS Home Page at <http://www.usda.gov/nass/>, click on **Publications**, then click on the **Subscribe by E-mail** button which takes you to the page describing e-mail delivery of reports. Finally, click on **Go to the Subscription Page** and follow the instructions. 2) If you do NOT have Internet access, send an e-mail message to: [usda-reports@usda.mannlib.cornell.edu](mailto:usda-reports@usda.mannlib.cornell.edu). In the body of the message type the word: **list**.

### AUTOFAX ACCESS

NASSFax service is available for some reports from your fax machine. Please call 202-720-2000, using the handset attached to your fax. Respond to the voice prompts. Document 0411 is a list of available reports.

-----

### PRINTED REPORTS OR DATA PRODUCTS

CALL OUR TOLL-FREE ORDER DESK: 800-999-6779 (U.S. and Canada)  
Other areas, please call 703-834-0125 FAX: 703-834-0110  
(Visa, MasterCard, check, or money order acceptable for payment.)

-----

### ASSISTANCE

For **assistance** with general agricultural statistics or further information about NASS or its products or services, contact the **Agricultural Statistics Hotline** at **800-727-9540**, 7:30 a.m. to 4:00 p.m. ET, or e-mail: [nass@nass.usda.gov](mailto:nass@nass.usda.gov).