



Dairy Products

Released November 2, 2001, by the National Agricultural Statistics Service (NASS), Agricultural Statistics Board, U.S. Department of Agriculture. For information on "Dairy Products" call Tony Dorn at (202) 720-9168, office hours 7:00 a.m. to 4:00 p.m. ET.

September 2001 Highlights

American type cheese production totaled 283 million pounds, 2.7 percent above September 2000 but 0.9 percent below August 2001.

Total cheese output (excluding cottage cheese) was 646 million pounds, 1.1 percent below September 2000 and 2.6 percent below August 2001.

Cream cottage cheese production was 29.7 million pounds, 8.7 percent below September 2000 and 11.1 percent below August 2001.

Lowfat cottage cheese production was 30.0 million pounds, 6.3 percent below September 2000 and 13.3 percent below August 2001.

Butter production was 88.8 million pounds in September, 1.2 percent below September 2000 but 15.6 percent above August 2001.

Frozen dessert: (comparisons with September 2000)

Ice cream, Regular (hard) --- 70.5 million gallons, up 3.2 percent.

Ice cream, Lowfat (total) --- 31.4 million gallons, up 2.0 percent.

Ice cream, Nonfat (hard) --- 1.90 million gallons, down 6.8 percent.

Sherbet (hard) --- 3.90 million gallons, up 7.8 percent.

Frozen Yogurt (total) --- 6.50 million gallons, down 8.5 percent.

Dry milk products: (comparisons with September 2000)

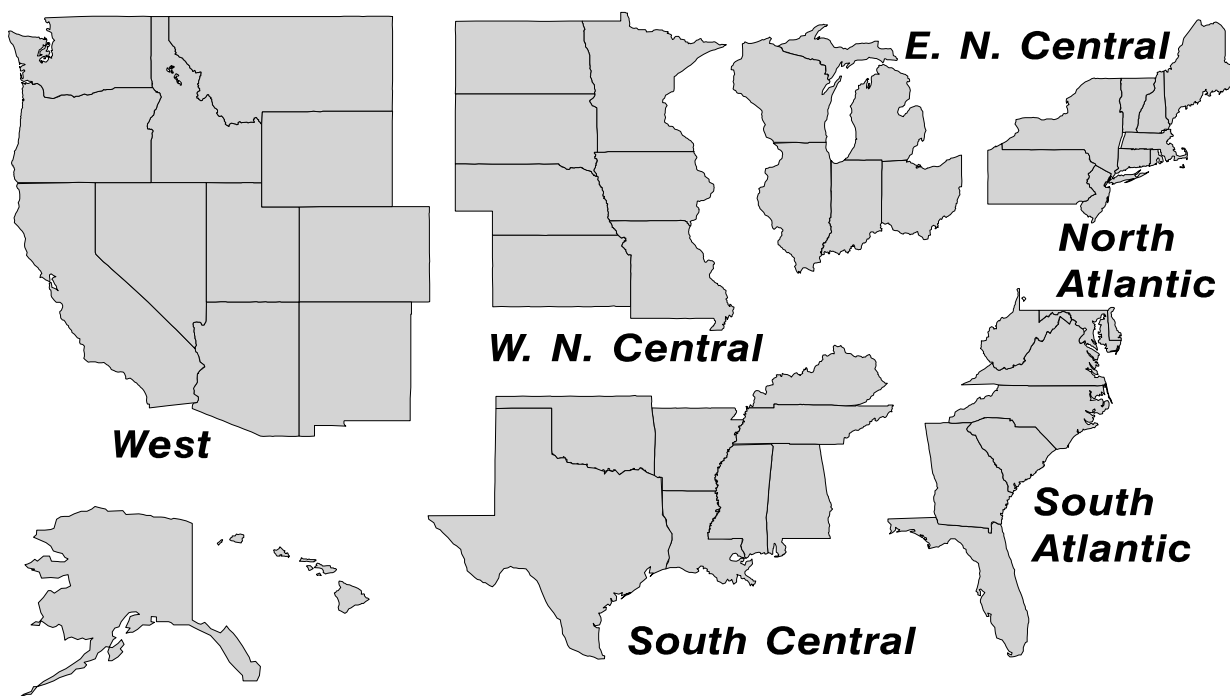
Nonfat dry milk for human food --- 94.6 million pounds, up 7.6 percent.

Dry whole milk --- 3.20 million pounds, down 51.1 percent.

Dry buttermilk --- 2.74 million pounds, down 20.5 percent.

U. S. Geographic Regions Dairy Products

State totals are not published when fewer than 3 firms have reported or one firm comprises more than 60 percent of the State total. If we are not able to publish a region for confidentiality reasons, it will be combined with other regions when possible. For example, if North Atlantic can not be published, then it will be combined with South Atlantic to publish Atlantic. The West North Central and East North Central will be combined, if necessary, to form North Central. In the event that neither could be published, they may be combined with South Central to publish Central. Some tables will have only limited regions shown, therefore the regions may not add to the United States total.



**Dairy Products: Production by Product,
United States, September, 2000-2001**

Product	Sep 2000	Aug 2001 ¹	Sep 2001	Change From	
				Sep 2000	Aug 2001
	<i>1,000 Pounds</i>	<i>1,000 Pounds</i>	<i>1,000 Pounds</i>	<i>Percent</i>	<i>Percent</i>
Butter	89,881	76,813	88,760	-1.2	15.6
Cheese					
American Types ²	275,847	285,861	283,304	2.7	-0.9
Cheddar	207,706	220,619	221,944	6.9	0.6
Swiss	17,582	19,947	19,340	10.0	-3.0
Brick and Muenster	7,610	7,832	7,139	-6.2	-8.8
Cream and Neufchatel	54,937	57,608	51,452	-6.3	-10.7
Hispanic	8,353	9,045	8,391	0.5	-7.2
Mozzarella	214,408	211,037	210,878	-1.6	-0.1
Other Italian Types	56,008	55,242	49,601	-11.4	-10.2
Total Italian Types	270,416	266,279	260,479	-3.7	-2.2
All Other Types	19,095	16,818	16,305	-14.6	-3.1
Total	653,840	663,390	646,410	-1.1	-2.6
Cottage Cheese, Curd ³	39,902	40,473	36,289	-9.1	-10.3
Cottage Cheese, Cream ⁴	32,561	33,463	29,740	-8.7	-11.1
Cottage Cheese, Lowfat ⁵	32,056	34,647	30,049	-6.3	-13.3
Canned Evaporated and Condensed Whole Milk	36,999	41,262	39,235	6.0	-4.9
Dry Whole Milk	6,548	3,543	3,200	-51.1	-9.7
Nonfat Dry Milk, Human	87,935	95,718	94,605	7.6	-1.2
Dry Skim Milk, Animal	395	624	451	14.2	-27.7
Dry Buttermilk	3,444	2,309	2,738	-20.5	18.6
Yogurt, Plain & Flavored	172,085	165,457	180,462	4.9	9.1
	<i>1,000 Gallons</i>	<i>1,000 Gallons</i>	<i>1,000 Gallons</i>	<i>Percent</i>	<i>Percent</i>
Frozen Products					
Ice Cream, Hard	68,350	79,866	70,530	3.2	-11.7
Ice Cream, Lowfat, Hard	7,499	8,579	7,437	-0.8	-13.3
Ice Cream, Lowfat, Soft	23,294	31,585	23,962	2.9	-24.1
Ice Cream, Lowfat, Total	30,793	40,164	31,399	2.0	-21.8
Ice Cream, Nonfat, Hard	2,039	1,786	1,901	-6.8	6.4
Sherbet, Hard	3,619	4,740	3,901	7.8	-17.7
Water and Juice Ices	4,182	5,837	4,246	1.5	-27.3
Frozen Yogurt, Total	7,106	7,992	6,504	-8.5	-18.6
Regular & Lowfat, Hard	2,326	2,337	1,960	-15.7	-16.1
Nonfat, Hard	1,303	1,233	1,225	-6.0	-0.6
Other Frozen Dairy Products	973	975	834	-14.3	-14.5
Mix for Frozen Products					
Ice Cream Mix	38,457	46,698	39,776	3.4	-14.8
Ice Cream, Lowfat, Mix	17,139	22,360	17,452	1.8	-21.9
Ice Cream, Nonfat, Mix	1,574	1,286	1,192	-24.3	-7.3
Sherbet Mix	2,513	3,607	2,765	10.0	-23.3
Yogurt Mix	4,231	4,701	3,826	-9.6	-18.6

¹ Revised.

² Includes Cheddar, Colby, Monterey, and Jack.

³ Mostly used for processing into cream or lowfat cottage cheese.

⁴ Fat content 4 percent or more.

⁵ Fat content less than 4 percent.

**Whey and Modified Whey Products: Production, Stocks,
and Prices, United States, September, 2000-2001**

Product	Sep 2000	Aug 2001 ¹	Sep 2001	Change From	
				Sep 2000	Aug 2001
Production					
	<i>1,000 Pounds</i>	<i>1,000 Pounds</i>	<i>1,000 Pounds</i>	<i>Percent</i>	<i>Percent</i>
Condensed Whey, Solids Content ²					
Sweet-Type, Human	7,152	10,249	9,445	32.1	-7.8
Sweet-Type, Animal	1,022	956	885	-13.4	-7.4
Dry Whey Products					
Dry Whey, Human	82,790	85,024	72,502	-12.4	-14.7
Dry Whey, Animal	7,347	5,218	4,538	-38.2	-13.0
Dry Whey, Total	90,137	90,242	77,040	-14.5	-14.6
Reduced Lactose and Minerals					
Human Food	3,773	7,526	7,904	109.5	5.0
Animal Feed	2,999	2,956	2,889	-3.7	-2.3
Lactose, Human and Animal	42,480	45,622	46,929	10.5	2.9
Whey					
Solids in Wet Blends, Animal	2,962	3,114	3,334	12.6	7.1
Protein Concentrate, Human	22,761	23,982	23,526	3.4	-1.9
Protein Concentrate, Animal	3,685	3,985	3,797	3.0	-4.7
Manufacturers' Stocks End-of-Month ³					
	<i>1,000 Pounds</i>	<i>1,000 Pounds</i>	<i>1,000 Pounds</i>	<i>Percent</i>	<i>Percent</i>
Dry Whey Products					
Dry Whey, Human	41,743	30,930	27,096	-35.1	-12.4
Dry Whey, Animal	11,361	4,423	4,406	-61.2	-0.4
Reduced Lactose and Minerals					
Human and Animal ⁴	9,291	6,519	7,880	-15.2	20.9
Lactose, Human and Animal	27,868	22,153	23,431	-15.9	5.8
Whey Protein Concentrate, Human	17,588	13,583	14,768	-16.0	8.7
Whey Protein Concentrate, Animal	1,988	1,802	1,799	-9.5	-0.2
Manufacturers' Selling Price ⁵					
	<i>Cents per Pound</i>	<i>Cents per Pound</i>	<i>Cents per Pound</i>	<i>Cents Change</i>	<i>Cents Change</i>
Dry Whey, Animal	16.5	28.2	27.7	11.2	-0.5

¹ Revised.

² Final marketable product only. Does not include quantity used or shipped to another plant for further processing into dry whey or modified whey products.

³ Stocks held by manufacturers at all points and in transit.

⁴ Reduced lactose and minerals stocks combined to avoid disclosure of individual operations.

⁵ Prices for bulk goods, f.o.b. plant. Average monthly prices reported by firms.

**Dairy Products: Production by Product and Month,
United States, 2000-2001 ¹**

Product and Month	By Month			Cumulative		
	2000	2001	Change From 2000	2000	2001	Change From 2000
	<i>1,000 Pounds</i>	<i>1,000 Pounds</i>	<i>Percent</i>	<i>1,000 Pounds</i>	<i>1,000 Pounds</i>	<i>Percent</i>
Total Cheese						
Jan	692,946	686,591	-0.9	692,946	686,591	-0.9
Feb	649,472	632,159	-2.7	1,342,418	1,318,750	-1.8
Mar	714,816	714,057	-0.1	2,057,234	2,032,807	-1.2
Apr	693,997	675,080	-2.7	2,751,231	2,707,887	-1.6
May	730,387	708,832	-3.0	3,481,618	3,416,719	-1.9
Jun	695,734	682,337	-1.9	4,177,352	4,099,056	-1.9
Jul	687,591	679,109	-1.2	4,864,943	4,778,165	-1.8
Aug	683,776	663,390	-3.0	5,548,719	5,441,555	-1.9
Sep	653,840	646,410	-1.1	6,202,559	6,087,965	-1.8
Oct	688,543			6,891,102		
Nov	675,004			7,566,106		
Dec	688,411			8,254,517		
American Cheese						
Jan	317,570	301,114	-5.2	317,570	301,114	-5.2
Feb	303,790	274,753	-9.6	621,360	575,867	-7.3
Mar	314,183	299,478	-4.7	935,543	875,345	-6.4
Apr	312,720	294,336	-5.9	1,248,263	1,169,681	-6.3
May	322,310	309,835	-3.9	1,570,573	1,479,516	-5.8
Jun	308,582	308,076	-0.2	1,879,155	1,787,592	-4.9
Jul	318,832	298,394	-6.4	2,197,987	2,085,986	-5.1
Aug	291,870	285,861	-2.1	2,489,857	2,371,847	-4.7
Sep	275,847	283,304	2.7	2,765,704	2,655,151	-4.0
Oct	285,627			3,051,331		
Nov	279,170			3,330,501		
Dec	303,418			3,633,919		
Cheddar Cheese						
Jan	248,409	234,871	-5.4	248,409	234,871	-5.4
Feb	238,801	214,947	-10.0	487,210	449,818	-7.7
Mar	253,020	234,876	-7.2	740,230	684,694	-7.5
Apr	247,042	230,856	-6.6	987,272	915,550	-7.3
May	257,621	244,540	-5.1	1,244,893	1,160,090	-6.8
Jun	240,462	242,771	1.0	1,485,355	1,402,861	-5.6
Jul	247,106	236,466	-4.3	1,732,461	1,639,327	-5.4
Aug	224,350	220,619	-1.7	1,956,811	1,859,946	-5.0
Sep	207,706	221,944	6.9	2,164,517	2,081,890	-3.8
Oct	217,163			2,381,680		
Nov	209,248			2,590,928		
Dec	237,312			2,828,240		

See footnote(s) at end of table.

--continued

**Dairy Products: Production by Product and Month,
United States, 2000-2001 ¹ (continued)**

Product and Month	By Month			Cumulative		
	2000	2001	Change From 2000	2000	2001	Change From 2000
	<i>1,000 Pounds</i>	<i>1,000 Pounds</i>	<i>Percent</i>	<i>1,000 Pounds</i>	<i>1,000 Pounds</i>	<i>Percent</i>
Italian Cheese						
Jan	277,325	289,173	4.3	277,325	289,173	4.3
Feb	257,551	267,646	3.9	534,876	556,819	4.1
Mar	287,340	298,886	4.0	822,216	855,705	4.1
Apr	277,414	272,945	-1.6	1,099,630	1,128,650	2.6
May	300,587	284,652	-5.3	1,400,217	1,413,302	0.9
Jun	276,067	270,331	-2.1	1,676,284	1,683,633	0.4
Jul	263,320	275,257	4.5	1,939,604	1,958,890	1.0
Aug	274,527	266,279	-3.0	2,214,131	2,225,169	0.5
Sep	270,416	260,479	-3.7	2,484,547	2,485,648	
Oct	275,548			2,760,095		
Nov	272,572			3,032,667		
Dec	278,286			3,310,953		
Mozzarella Cheese						
Jan	215,158	231,533	7.6	215,158	231,533	7.6
Feb	205,237	214,093	4.3	420,395	445,626	6.0
Mar	226,466	237,066	4.7	646,861	682,692	5.5
Apr	221,979	215,485	-2.9	868,840	898,177	3.4
May	242,862	229,997	-5.3	1,111,702	1,128,174	1.5
Jun	221,418	223,172	0.8	1,333,120	1,351,346	1.4
Jul	214,847	224,814	4.6	1,547,967	1,576,160	1.8
Aug	216,490	211,037	-2.5	1,764,457	1,787,197	1.3
Sep	214,408	210,878	-1.6	1,978,865	1,998,075	1.0
Oct	217,365			2,196,230		
Nov	211,574			2,407,804		
Dec	225,933			2,633,737		
Other Italian						
Jan	62,167	57,640	-7.3	62,167	57,640	-7.3
Feb	52,314	53,553	2.4	114,481	111,193	-2.9
Mar	60,874	61,820	1.6	175,355	173,013	-1.3
Apr	55,435	57,460	3.7	230,790	230,473	-0.1
May	57,725	54,655	-5.3	288,515	285,128	-1.2
Jun	54,649	47,159	-13.7	343,164	332,287	-3.2
Jul	48,473	50,443	4.1	391,637	382,730	-2.3
Aug	58,037	55,242	-4.8	449,674	437,972	-2.6
Sep	56,008	49,601	-11.4	505,682	487,573	-3.6
Oct	58,183			563,865		
Nov	60,998			624,863		
Dec	52,353			677,216		

See footnote(s) at end of table.

--continued

**Dairy Products: Production by Product and Month,
United States, 2000-2001 ¹ (continued)**

Product and Month	By Month			Cumulative		
	2000	2001	Change From 2000	2000	2001	Change From 2000
	<i>1,000 Pounds</i>	<i>1,000 Pounds</i>	<i>Percent</i>	<i>1,000 Pounds</i>	<i>1,000 Pounds</i>	<i>Percent</i>
Butter						
Jan	139,928	129,366	-7.5	139,928	129,366	-7.5
Feb	128,195	110,175	-14.1	268,123	239,541	-10.7
Mar	120,987	101,907	-15.8	389,110	341,448	-12.2
Apr	111,738	105,964	-5.2	500,848	447,412	-10.7
May	108,885	109,074	0.2	609,733	556,486	-8.7
Jun	89,140	86,945	-2.5	698,873	643,431	-7.9
Jul	85,362	79,888	-6.4	784,235	723,319	-7.8
Aug	83,651	76,813	-8.2	867,886	800,132	-7.8
Sep	89,881	88,760	-1.2	957,767	888,892	-7.2
Oct	103,921			1,061,688		
Nov	100,357			1,162,045		
Dec	111,580			1,273,625		
Nonfat Dry Milk, Human						
Jan	134,336	116,667	-13.2	134,336	116,667	-13.2
Feb	131,489	132,415	0.7	265,825	249,082	-6.3
Mar	139,390	121,009	-13.2	405,215	370,091	-8.7
Apr	145,680	131,314	-9.9	550,895	501,405	-9.0
May	137,883	139,903	1.5	688,778	641,308	-6.9
Jun	126,981	131,341	3.4	815,759	772,649	-5.3
Jul	120,744	117,158	-3.0	936,503	889,807	-5.0
Aug	105,301	95,718	-9.1	1,041,804	985,525	-5.4
Sep	87,935	94,605	7.6	1,129,739	1,080,130	-4.4
Oct	100,998			1,230,737		
Nov	99,489			1,330,226		
Dec	121,371			1,451,597		
Total Dry Whey ²						
Jan	106,222	95,366	-10.2	106,222	95,366	-10.2
Feb	95,055	90,271	-5.0	201,277	185,637	-7.8
Mar	103,648	99,397	-4.1	304,925	285,034	-6.5
Apr	101,464	96,592	-4.8	406,389	381,626	-6.1
May	107,773	101,494	-5.8	514,162	483,120	-6.0
Jun	106,314	98,666	-7.2	620,476	581,786	-6.2
Jul	102,862	99,036	-3.7	723,338	680,822	-5.9
Aug	99,267	90,242	-9.1	822,605	771,064	-6.3
Sep	90,137	77,040	-14.5	912,742	848,104	-7.1
Oct	93,818			1,006,560		
Nov	86,661			1,093,221		
Dec	94,712			1,187,933		

See footnote(s) at end of table.

--continued

**Dairy Products: Production by Product and Month,
United States, 2000-2001 ¹ (continued)**

Product and Month	By Month			Cumulative		
	2000	2001	Change From 2000	2000	2001	Change From 2000
	<i>1,000 Pounds</i>	<i>1,000 Pounds</i>	<i>Percent</i>	<i>1,000 Pounds</i>	<i>1,000 Pounds</i>	<i>Percent</i>
Cream Cottage Cheese						
Jan	28,725	30,512	6.2	28,725	30,512	6.2
Feb	29,745	28,436	-4.4	58,470	58,948	0.8
Mar	32,544	32,540		91,014	91,488	0.5
Apr	29,881	29,829	-0.2	120,895	121,317	0.3
May	32,223	34,070	5.7	153,118	155,387	1.5
Jun	31,860	31,347	-1.6	184,978	186,734	0.9
Jul	31,365	32,594	3.9	216,343	219,328	1.4
Aug	34,156	33,463	-2.0	250,499	252,791	0.9
Sep	32,561	29,740	-8.7	283,060	282,531	-0.2
Oct	31,233			314,293		
Nov	30,106			344,399		
Dec	27,652			372,051		
Lowfat Cottage Cheese						
Jan	28,017	29,707	6.0	28,017	29,707	6.0
Feb	29,918	28,562	-4.5	57,935	58,269	0.6
Mar	32,881	32,381	-1.5	90,816	90,650	-0.2
Apr	29,454	29,590	0.5	120,270	120,240	
May	32,600	34,185	4.9	152,870	154,425	1.0
Jun	31,439	30,401	-3.3	184,309	184,826	0.3
Jul	29,953	31,210	4.2	214,262	216,036	0.8
Aug	32,502	34,647	6.6	246,764	250,683	1.6
Sep	32,056	30,049	-6.3	278,820	280,732	0.7
Oct	30,790			309,610		
Nov	28,512			338,122		
Dec	26,130			364,252		
	<i>1,000 Gallons</i>	<i>1,000 Gallons</i>	<i>Percent</i>	<i>1,000 Gallons</i>	<i>1,000 Gallons</i>	<i>Percent</i>
Ice Cream, Hard						
Jan	61,251	62,974	2.8	61,251	62,974	2.8
Feb	70,632	67,138	-4.9	131,883	130,112	-1.3
Mar	83,032	76,796	-7.5	214,915	206,908	-3.7
Apr	80,202	78,520	-2.1	295,117	285,428	-3.3
May	84,008	78,894	-6.1	379,125	364,322	-3.9
Jun	87,745	83,775	-4.5	466,870	448,097	-4.0
Jul	83,473	81,942	-1.8	550,343	530,039	-3.7
Aug	80,330	79,866	-0.6	630,673	609,905	-3.3
Sep	68,350	70,530	3.2	699,023	680,435	-2.7
Oct	70,671			769,694		
Nov	57,223			826,917		
Dec	53,669			880,586		

See footnote(s) at end of table.

--continued

**Dairy Products: Production by Product and Month,
United States, 2000-2001 ¹ (continued)**

Product and Month	By Month			Cumulative		
	2000	2001	Change From 2000	2000	2001	Change From 2000
	<i>1,000 Gallons</i>	<i>1,000 Gallons</i>	<i>Percent</i>	<i>1,000 Gallons</i>	<i>1,000 Gallons</i>	<i>Percent</i>
Ice Cream, Lowfat						
Jan	23,827	24,246	1.8	23,827	24,246	1.8
Feb	26,905	26,324	-2.2	50,732	50,570	-0.3
Mar	34,042	34,043		84,774	84,613	-0.2
Apr	33,495	36,353	8.5	118,269	120,966	2.3
May	38,717	40,901	5.6	156,986	161,867	3.1
Jun	41,918	42,676	1.8	198,904	204,543	2.8
Jul	39,420	40,913	3.8	238,324	245,456	3.0
Aug	37,577	40,164	6.9	275,901	285,620	3.5
Sep	30,793	31,399	2.0	306,694	317,019	3.4
Oct	29,467			336,161		
Nov	23,689			359,850		
Dec	22,235			382,085		
Ice Cream, NF, Hard						
Jan	1,910	1,989	4.1	1,910	1,989	4.1
Feb	1,995	2,206	10.6	3,905	4,195	7.4
Mar	2,533	1,976	-22.0	6,438	6,171	-4.1
Apr	2,404	1,794	-25.4	8,842	7,965	-9.9
May	2,268	2,021	-10.9	11,110	9,986	-10.1
Jun	2,627	2,328	-11.4	13,737	12,314	-10.4
Jul	2,207	1,813	-17.9	15,944	14,127	-11.4
Aug	2,461	1,786	-27.4	18,405	15,913	-13.5
Sep	2,039	1,901	-6.8	20,444	17,814	-12.9
Oct	1,939			22,383		
Nov	1,565			23,948		
Dec	1,678			25,626		
Sherbet, Hard						
Jan	3,481	3,506	0.7	3,481	3,506	0.7
Feb	3,969	3,835	-3.4	7,450	7,341	-1.5
Mar	4,706	4,548	-3.4	12,156	11,889	-2.2
Apr	4,648	4,298	-7.5	16,804	16,187	-3.7
May	5,207	5,040	-3.2	22,011	21,227	-3.6
Jun	5,214	5,303	1.7	27,225	26,530	-2.6
Jul	4,582	5,095	11.2	31,807	31,625	-0.6
Aug	4,725	4,740	0.3	36,532	36,365	-0.5
Sep	3,619	3,901	7.8	40,151	40,266	0.3
Oct	3,346			43,497		
Nov	3,003			46,500		
Dec	3,039			49,539		

See footnote(s) at end of table.

--continued

**Dairy Products: Production by Product and Month,
United States, 2000-2001¹ (continued)**

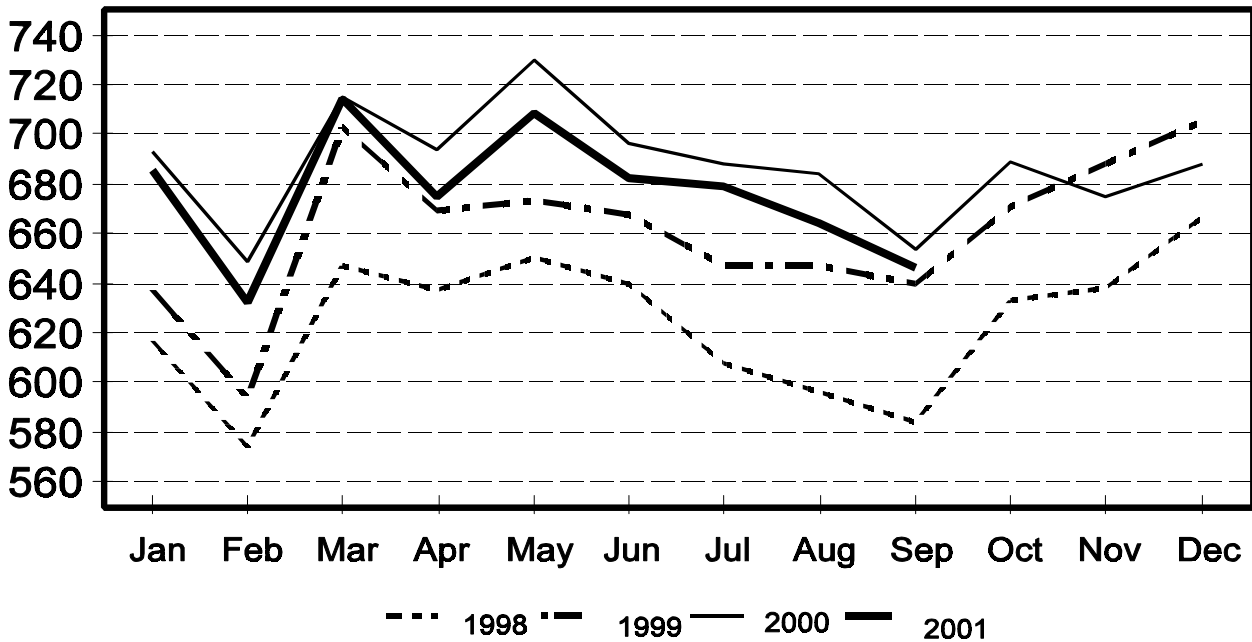
Product and Month	By Month			Cumulative		
	2000	2001	Change From 2000	2000	2001	Change From 2000
	<i>1,000 Gallons</i>	<i>1,000 Gallons</i>	<i>Percent</i>	<i>1,000 Gallons</i>	<i>1,000 Gallons</i>	<i>Percent</i>
Frozen Yogurt						
Jan	6,966	6,290	-9.7	6,966	6,290	-9.7
Feb	6,427	6,428		13,393	12,718	-5.0
Mar	8,088	7,880	-2.6	21,481	20,598	-4.1
Apr	7,426	7,398	-0.4	28,907	27,996	-3.2
May	8,854	8,060	-9.0	37,761	36,056	-4.5
Jun	8,262	8,024	-2.9	46,023	44,080	-4.2
Jul	7,965	8,196	2.9	53,988	52,276	-3.2
Aug	8,910	7,992	-10.3	62,898	60,268	-4.2
Sep	7,106	6,504	-8.5	70,004	66,772	-4.6
Oct	6,608			76,612		
Nov	5,372			81,984		
Dec	5,273			87,257		

¹ August 2001 data revised.

² Excludes all modified dry whey products.

Total Cheese Production United States

Million Pounds



**Total Cheese, Excluding Cottage Cheese: Production by
State and United States, September 2000-2001**

State	Sep 2000	Aug ¹ 2001	Sep 2001	Change From	
				Sep 2000	Aug 2001
	<i>1,000 Pounds</i>	<i>1,000 Pounds</i>	<i>1,000 Pounds</i>	<i>Percent</i>	<i>Percent</i>
CA	122,915	137,827	134,322	9.3	-2.5
ID	46,289	47,958	48,316	4.4	0.7
IL	8,288	8,396	8,321	0.4	-0.9
IA	17,786	20,896	17,438	-2.0	-16.5
MA	91	102	80	-12.1	-21.6
MN	52,000	43,331	41,339	-20.5	-4.6
MO	8,635	8,267	8,218	-4.8	-0.6
NY	56,759	58,788	54,941	-3.2	-6.5
ND	1,092	1,405	1,108	1.5	-21.1
OH	10,657	11,434	11,059	3.8	-3.3
PA	27,654	27,015	28,726	3.9	6.3
SD	11,042	12,287	13,645	23.6	11.1
UT	5,619	5,653	5,922	5.4	4.8
WA		12,910	11,675		-9.6
WI	179,981	176,576	173,489	-3.6	-1.7
Oth Sts ²	105,032	90,545	87,811	-16.4	-3.0
US	653,840	663,390	646,410	-1.1	-2.6
N Atlantic	98,178	101,761	96,071	-2.1	-5.6
S Atlantic	3,269	3,263	3,597	10.0	10.2
E N Central	211,399	208,494	204,697	-3.2	-1.8
W N Central	98,251	93,759	89,179	-9.2	-4.9
S Central	4,935	3,924	4,904	-0.6	25.0
West	237,808	252,189	247,962	4.3	-1.7

¹ Revised.

² States not shown when fewer than 3 plants reported or individual plant operations could be disclosed. Percent change shown only when comparable States are included in the calculation.

American Cheese: Production by State and United States, September 2000-2001

State	Sep 2000	Aug ¹ 2001	Sep 2001	Change From	
				Sep 2000	Aug 2001
	<i>1,000 Pounds</i>	<i>1,000 Pounds</i>	<i>1,000 Pounds</i>	<i>Percent</i>	<i>Percent</i>
CA	48,016	62,015	63,584	32.4	2.5
ID	40,207	39,896	38,977	-3.1	-2.3
IA	10,801	10,151	10,190	-5.7	0.4
MN	49,046	40,903	38,940	-20.6	-4.8
NY	5,867	7,639	7,727	31.7	1.2
ND	1,092	1,405	1,108	1.5	-21.1
OH	1,762	1,984	1,858	5.4	-6.4
OR	5,130	5,805	6,352	23.8	9.4
SD	5,613	6,835	8,463	50.8	23.8
UT	2,332	2,771	3,066	31.5	10.6
WA		12,420	11,479		-7.6
WI	69,967	66,200	63,800	-8.8	-3.6
Oth Sts ²	36,014	27,837	27,760	-22.9	-0.3
US	275,847	285,861	283,304	2.7	-0.9
Atlantic	10,579	13,824	13,152	24.3	-4.9
E N Central	73,167	69,645	67,025	-8.4	-3.8
W N Central	66,559	59,296	58,704	-11.8	-1.0
S Central	4,520	3,422	4,495	-0.6	31.4
West	121,022	139,674	139,928	15.6	0.2

¹ Revised.

² States not shown when fewer than 3 plants reported or individual plant operations could be disclosed. Percent change shown only when comparable States are included in the calculation.

Cheddar Cheese: Production by State and United States, September 2000-2001

State	Sep 2000	Aug ¹ 2001	Sep 2001	Change From	
				Sep 2000	Aug 2001
	<i>1,000 Pounds</i>	<i>1,000 Pounds</i>	<i>1,000 Pounds</i>	<i>Percent</i>	<i>Percent</i>
CA	34,632	47,080	49,552	43.1	5.3
ID	19,206	19,357	18,291	-4.8	-5.5
MN	44,583	38,113	37,395	-16.1	-1.9
NY	5,763	7,582	7,656	32.8	1.0
WI	53,105	51,200	50,600	-4.7	-1.2
Oth Sts ²	50,417	57,287	58,450	15.9	2.0
US	207,706	220,619	221,944	6.9	0.6
Atlantic	10,160	13,511	12,853	26.5	-4.9
E N Cen	54,618	52,837	52,039	-4.7	-1.5
W N Cen	55,133	49,682	50,311	-8.7	1.3
S Cen	4,520	3,422	4,495	-0.6	31.4
West	83,275	101,167	102,246	22.8	1.1

¹ Revised.

² States not shown when fewer than 3 plants reported or individual plant operations could be disclosed. Percent change shown only when comparable States are included in the calculation.

Mozzarella Cheese: Production by State and United States, September 2000-2001

State	Sep 2000	Aug ¹ 2001	Sep 2001	Change From	
				Sep 2000	Aug 2001
	<i>1,000 Pounds</i>	<i>1,000 Pounds</i>	<i>1,000 Pounds</i>	<i>Percent</i>	<i>Percent</i>
CA	52,824	55,322	54,389	3.0	-1.7
NY	20,015	20,065	18,876	-5.7	-5.9
SD	4,885	4,953	4,688	-4.0	-5.4
WI	57,297	58,700	62,100	8.4	5.8
Oth Sts ²	79,387	71,997	70,825	-10.8	-1.6
US	214,408	211,037	210,878	-1.6	-0.1
Atlantic	40,567	41,372	39,429	-2.8	-4.7
E N Central	68,583	69,365	72,538	5.8	4.6
W N Central	18,244				
West	87,014	84,199	82,554	-5.1	-2.0

¹ Revised.

² States not shown when fewer than 3 plants reported or individual plant operations could be disclosed. Percent change shown only when comparable States are included in the calculation.

Butter: Production by State and United States, September 2000-2001

State	Sep 2000	Aug ¹ 2001	Sep 2001	Change From	
				Sep 2000	Aug 2001
	<i>1,000 Pounds</i>	<i>1,000 Pounds</i>	<i>1,000 Pounds</i>	<i>Percent</i>	<i>Percent</i>
CA	27,113	22,978	23,154	-14.6	0.8
MN	3,324				
NY	1,223	1,154	2,128	74.0	84.4
ND	390				
PA	5,951	4,457	4,562	-23.3	2.4
WA		9,269	8,062		-13.0
WI	18,231	19,254	23,000	26.2	19.5
Oth Sts ²	33,649	19,701	27,854	-17.2	41.4
US	89,881	76,813	88,760	-1.2	15.6
N Atlantic	10,975	6,319	9,077	-17.3	43.6
E N Central	20,502	21,897	26,548	29.5	21.2
W N Central	9,788	6,486	7,771	-20.6	19.8
West	42,156	36,436	36,026	-14.5	-1.1

¹ Revised.

² States not shown when fewer than 3 plants reported or individual plant operations could be disclosed. Percent change shown only when comparable States are included in the calculation.

**Nonfat Dry Milk, Human: Production by State
and United States, September 2000-2001**

State	Sep 2000	Aug ¹ 2001	Sep 2001	Change From	
				Sep 2000	Aug 2001
	<i>1,000 Pounds</i>	<i>1,000 Pounds</i>	<i>1,000 Pounds</i>	<i>Percent</i>	<i>Percent</i>
CA	51,972	53,828	53,015	2.0	-1.5
MN & WI	1,262				
NM	995	121			
WA		16,239	15,333		-5.6
Oth Sts ²	33,706	25,530	26,257	-22.1	2.8
US	87,935	95,718	94,605	7.6	-1.2
Atlantic	3,024	5,047	6,112	102.1	21.1
E N Central	710	1,354	1,476	107.9	9.0
W N Central	7,090	3,854	4,043	-43.0	4.9
S Central	1,209	1,694	1,694	40.1	
West	75,902	83,769	81,280	7.1	-3.0

¹ Revised.

² States not shown when fewer than 3 plants reported or individual plant operations could be disclosed. Percent change shown only when comparable States are included in the calculation.

**Dry Whey, Human: Production by State
and United States, September 2000-2001**

State	Sep 2000	Aug ¹ 2001	Sep 2001	Change From	
				Sep 2000	Aug 2001
	<i>1,000 Pounds</i>	<i>1,000 Pounds</i>	<i>1,000 Pounds</i>	<i>Percent</i>	<i>Percent</i>
CA	11,341	11,152	10,572	-6.8	-5.2
MN	6,155	5,436	5,400	-12.3	-0.7
NY	8,135	9,950	9,465	16.3	-4.9
PA	6,599	6,537	6,450	-2.3	-1.3
WA		7,138	5,019		-29.7
WI	23,628	22,540	21,290	-9.9	-5.5
Oth Sts ²	26,932	22,271	14,306	-46.9	-35.8
US	82,790	85,024	72,502	-12.4	-14.7
Atlantic	14,734	16,487	15,915	8.0	-3.5
Central	40,748	39,262	36,987	-9.2	-5.8
West	27,308	29,275	19,600	-28.2	-33.0

¹ Revised.

² States not shown when fewer than 3 plants reported or individual plant operations could be disclosed. Percent change shown only when comparable States are included in the calculation.

**Lactose: Production by State and
United States, September 2000-2001**

State	Sep 2000	Aug ¹ 2001	Sep 2001	Change From	
				Sep 2000	Aug 2001
	<i>1,000 Pounds</i>	<i>1,000 Pounds</i>	<i>1,000 Pounds</i>	<i>Percent</i>	<i>Percent</i>
MN	7,893	7,516	7,537	-4.5	0.3
WI	7,296	7,811	9,243	26.7	18.3
Oth Sts ²	27,291	30,295	30,149	10.5	-0.5
US	42,480	45,622	46,929	10.5	2.9
E N Central		8,644	10,025		16.0
W N Central	14,184	13,326	13,370	-5.7	0.3
West	19,549	21,374	21,418	9.6	0.2

¹ Revised.

² States not shown when fewer than 3 plants reported or individual plant operations could be disclosed. Percent change shown only when comparable States are included in the calculation.

**Whey Protein Concentrate, Human: Production by State
and United States, September 2000-2001**

State	Sep 2000	Aug ¹ 2001	Sep 2001	Change From	
				Sep 2000	Aug 2001
	<i>1,000 Pounds</i>	<i>1,000 Pounds</i>	<i>1,000 Pounds</i>	<i>Percent</i>	<i>Percent</i>
CA	7,309	8,736	8,908	21.9	2.0
MN	3,786	3,724	3,157	-16.6	-15.2
WI	3,653	4,150	3,976	8.8	-4.2
Oth Sts ²	8,013	7,372	7,485	-6.6	1.5
US	22,761	23,982	23,526	3.4	-1.9

¹ Revised.

² States not shown when fewer than 3 plants reported or individual plant operations could be disclosed. Percent change shown only when comparable States are included in the calculation.

Ice Cream, Hard: Production by State and United States, September 2000-2001

State	Sep 2000	Aug ¹ 2001	Sep 2001	Change From	
				Sep 2000	Aug 2001
	<i>1,000 Gallons</i>	<i>1,000 Gallons</i>	<i>1,000 Gallons</i>	<i>Percent</i>	<i>Percent</i>
CA	10,719	12,584	10,609	-1.0	-15.7
FL	1,622	2,000	1,900	17.1	-5.0
IL	2,619	3,627	3,190	21.8	-12.0
IN	5,595	6,549	7,080	26.5	8.1
MD	1,644	1,997	1,713	4.2	-14.2
MA	4,667	5,686	5,209	11.6	-8.4
MI	1,754	1,803	1,657	-5.5	-8.1
MN	3,564	3,890	3,482	-2.3	-10.5
NH	27	24	13	-51.9	-45.8
NM	219	219	219		
NY	2,168	2,700	2,000	-7.7	-25.9
NC	1,196	1,431	1,651	38.0	15.4
ND	80				
OH	2,965	3,540	2,671	-9.9	-24.5
OR	885	1,200	940	6.2	-21.7
PA	3,286	4,309	3,449	5.0	-20.0
SD	2	3	2		-33.3
TN	1,518	1,616	1,551	2.2	-4.0
TX	4,086	4,914	3,704	-9.3	-24.6
UT	1,096	1,205	1,182	7.8	-1.9
WA	1,134	1,268	929	-18.1	-26.7
Oth Sts ²	17,504	19,301	17,379	-0.7	-10.0
US	68,350	79,866	70,530	3.2	-11.7
N Atlantic	12,239	15,692	13,426	9.7	-14.4
S Atlantic	5,555	6,913	6,798	22.4	-1.7
E N Central	13,721	16,495	15,325	11.7	-7.1
W N Central	10,969	11,648	10,969		-5.8
S Central	9,352	10,045	8,111	-13.3	-19.3
West	16,514	19,073	15,901	-3.7	-16.6

¹ Revised.

² States not shown when fewer than 3 plants reported or individual plant operations could be disclosed. Percent change shown only when comparable States are included in the calculation.

**Canned Milk and Dry Milk Products: Manufacturers' Shipments,
Stocks, and Selling Prices, September, 2000-2001**

Product	Sep 2000	Aug 2001 ¹	Sep 2001	Change From	
				Sep 2000	Aug 2001
	Manufacturers' Shipments ²				
	<i>1,000 Pounds</i>	<i>1,000 Pounds</i>	<i>1,000 Pounds</i>	<i>Percent</i>	<i>Percent</i>
Nonfat Dry Milk, Human	136,893	131,396	94,047	-31.3	-28.4
	Manufacturers' Stocks End-of-Month ³				
	<i>1,000 Pounds</i>	<i>1,000 Pounds</i>	<i>1,000 Pounds</i>	<i>Percent</i>	<i>Percent</i>
Canned Evaporated and Condensed Whole Milk	64,130	79,532	87,959	37.2	10.6
Nonfat Dry Milk, Human	154,438	108,929	97,685	-36.7	-10.3
Dry Buttermilk, Total	3,466	3,436	3,544	2.3	3.1

¹ Revised.

² For dry products, shipments of bulk goods only.

³ Stocks held by manufacturers at all points and in transit.

Procedures and Reliability: Estimates included in this report are based on data provided each month by manufacturers of these products. In 32 States, the State Departments of Agriculture assist in collection of data, which eliminates duplicate reporting and reduces respondent burden. Data are collected by mail, personal and telephone interviews following the close of each month. There were 1,124 manufacturers that made one or more products in 2000. Each month, reports are generally received from all dairy plants in States with small numbers of plants. In States with large numbers of plants, survey procedures are designed to obtain monthly reports from all large plants and from a sample of small plants. Monthly estimates are based upon returns from about 70 percent of the plants which account for 70 to 90 percent of the total production of major dairy products.

Revision Policy: Monthly estimates are subject to revision the month following the preliminary estimates. Annual estimates are published in the "**Dairy Products**" report published each April which includes any revisions made to current and previous year. In preparing the annual report, an attempt is made to get information from all plants.

The next "Dairy Products" report will be released at 3 p.m. ET on December 4, 2001.

The United States Department of Agriculture (USDA) prohibits discrimination in all its programs on the basis of race, color, national origin, gender, religion, age, disability, political beliefs, sexual orientation, and marital or family status. (Not all prohibited bases apply to all programs.) Persons with disabilities who require alternative means for communication of program information (braille, large print, audiotape, etc.) should contact the USDA's TARGET Center at 202-720-2600 (voice and TDD).

To file a complaint of discrimination, write USDA, Director, Office of Civil Rights, Room 326-W, Whitten Building, 1400 Independence Avenue, SW, Washington, D.C., 20250-9410, or call 202-720-5964 (voice or TDD). USDA is an equal opportunity provider and employer.

ACCESS TO REPORTS!!

For your convenience, there are several ways to obtain NASS reports, data products, and services:

INTERNET ACCESS

All NASS reports are available free of charge on the worldwide Internet. For access, connect to the Internet and go to the NASS Home Page at: <http://www.usda.gov/nass/>. Select "Today's Reports" or Publications and then Reports by Calendar or Publications and then Search, by Title or Subject.

E-MAIL SUBSCRIPTION

There are two options for subscribing via e-mail. All NASS reports are available by subscription free of charge direct to your e-mail address. 1) Starting with the NASS Home Page at <http://www.usda.gov/nass/>, click on **Publications**, then click on the **Subscribe by E-mail** button which takes you to the page describing e-mail delivery of reports. Finally, click on **Go to the Subscription Page** and follow the instructions. 2) If you do NOT have Internet access, send an e-mail message to: usda-reports@usda.mannlib.cornell.edu. In the body of the message type the word: **list**.

AUTOFAX ACCESS

NASSFax service is available for some reports from your fax machine. Please call 202-720-2000, using the handset attached to your fax. Respond to the voice prompts. Document 0411 is a list of available reports.

PRINTED REPORTS OR DATA PRODUCTS

CALL OUR TOLL-FREE ORDER DESK: 800-999-6779 (U.S. and Canada)
Other areas, please call 703-605-6220 FAX: 703-605-6900
(Visa, MasterCard, check, or money order acceptable for payment.)

ASSISTANCE

For **assistance** with general agricultural statistics or further information about NASS or its products or services, contact the **Agricultural Statistics Hotline** at **800-727-9540**, 7:30 a.m. to 4:00 p.m. ET, or e-mail: nass@nass.usda.gov.