

Released December 4, 2001, by the National Agricultural Statistics Service (NASS), Agricultural Statistics Board, U.S. Department of Agriculture. For information on "Dairy Products" call Tony Dorn at (202) 720-9168, office hours 7:00 a.m. to 4:00 p.m. ET.

October 2001 Highlights

American type cheese production totaled 295 million pounds, 3.2 percent above October 2000 and 4.3 percent above September 2001.

Total cheese output (excluding cottage cheese) was 681 million pounds, 1.1 percent below October 2000 but 5.6 percent above September 2001.

Butter production was 111 million pounds in October, 6.9 percent above October 2000 and 25.2 percent above September 2001.

Frozen dessert: (comparisons with October 2000)

Ice cream, Regular (hard) --- 67.7 million gallons, down 4.2 percent.

Ice cream, Lowfat (total) --- 30.1 million gallons, up 2.1 percent.

Ice cream, Nonfat (hard) --- 1.60 million gallons, down 17.5 percent.

Sherbet (hard) --- 3.65 million gallons, up 9.1 percent.

Frozen Yogurt (total) --- 6.60 million gallons, down 0.1 percent.

Nonfat dry milk for human food: (compared with October 2000) --- 101 million pounds, up 0.3 percent.

Dry whey products: (comparisons with October 2000)

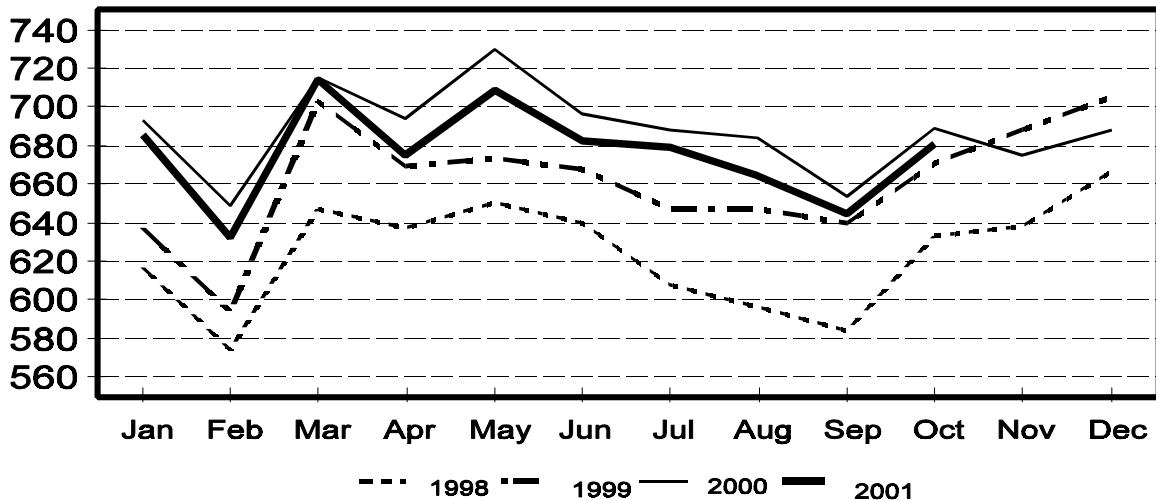
Dry whey, human --- 75.1 million pounds, down 15.0 percent.

Dry whey, animal --- 4.27 million pounds, down 22.0 percent.

Dry whey, total --- 79.4 million pounds, down 15.4 percent.

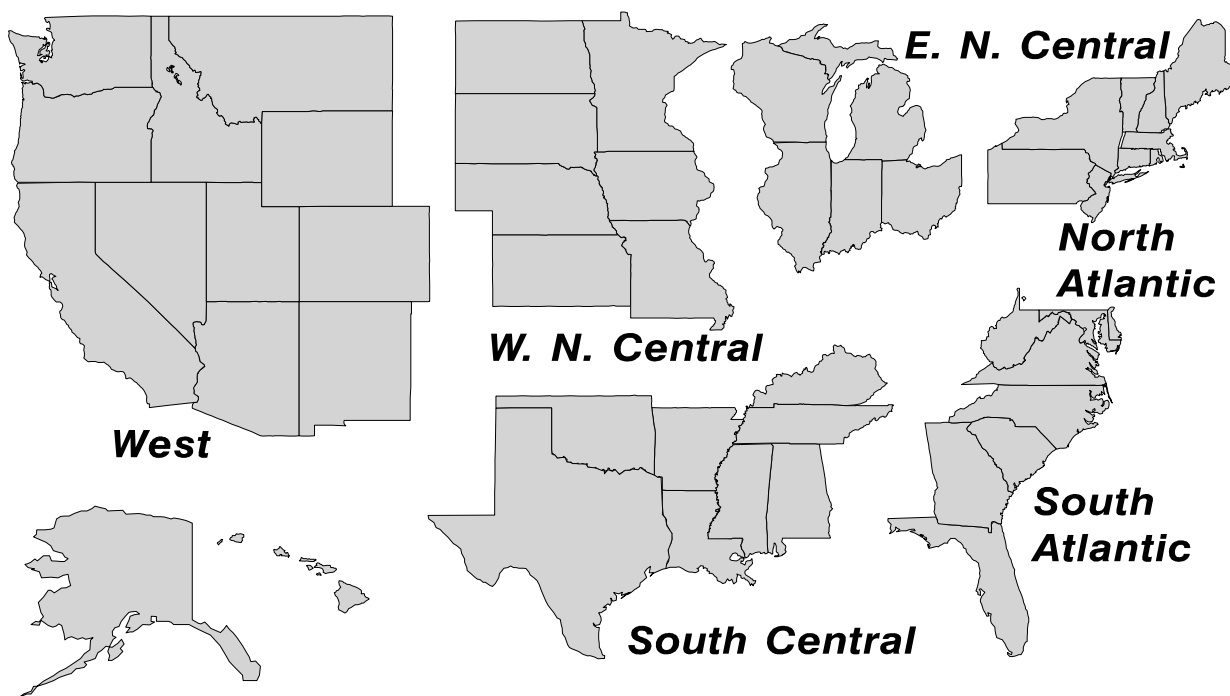
Total Cheese Production United States

Million Pounds



U. S. Geographic Regions Dairy Products

State totals are not published when fewer than 3 firms have reported or one firm comprises more than 60 percent of the State total. If we are not able to publish a region for confidentiality reasons, it will be combined with other regions when possible. For example, if North Atlantic can not be published, then it will be combined with South Atlantic to publish Atlantic. The West North Central and East North Central will be combined, if necessary, to form North Central. In the event that neither could be published, they may be combined with South Central to publish Central. Some tables will have only limited regions shown, therefore the regions may not add to the United States total.



**Dairy Products: Production by Product,
United States, October, 2000-2001**

Product	Oct 2000	Sep 2001 ¹	Oct 2001	Change From	
				Oct 2000	Sep 2001
	<i>1,000 Pounds</i>	<i>1,000 Pounds</i>	<i>1,000 Pounds</i>	<i>Percent</i>	<i>Percent</i>
Butter	103,921	88,748	111,116	6.9	25.2
Cheese					
American Types ²	285,627	282,494	294,715	3.2	4.3
Cheddar	217,163	221,554	229,028	5.5	3.4
Swiss	19,496	19,455	20,832	6.9	7.1
Brick and Muenster	8,259	7,197	7,807	-5.5	8.5
Cream and Neufchatel	71,550	50,838	64,729	-9.5	27.3
Hispanic	8,232	8,380	9,496	15.4	13.3
Mozzarella	217,365	211,007	216,157	-0.6	2.4
Other Italian Types	58,183	49,216	50,145	-13.8	1.9
Total Italian Types	275,548	260,223	266,302	-3.4	2.3
All Other Types	19,831	15,938	16,972	-14.4	6.5
Total	688,543	644,525	680,853	-1.1	5.6
Cottage Cheese, Curd ³	38,816	36,386	38,007	-2.1	4.5
Cottage Cheese, Cream ⁴	31,233	29,577	30,975	-0.8	4.7
Cottage Cheese, Lowfat ⁵	30,790	30,166	31,175	1.3	3.3
Canned Evaporated and Condensed Whole Milk	39,633	39,418	42,886	8.2	8.8
Dry Whole Milk	8,137	3,200	3,883	-52.3	21.3
Nonfat Dry Milk, Human	100,998	94,829	101,301	0.3	6.8
Dry Skim Milk, Animal	313	455	425	35.8	-6.6
Dry Buttermilk	4,248	2,791	3,827	-9.9	37.1
Yogurt, Plain & Flavored	144,597	180,462	151,104	4.5	-16.3
	<i>1,000 Gallons</i>	<i>1,000 Gallons</i>	<i>1,000 Gallons</i>	<i>Percent</i>	<i>Percent</i>
Frozen Products					
Ice Cream, Hard	70,671	70,782	67,678	-4.2	-4.4
Ice Cream, Lowfat, Hard	7,118	7,444	7,470	4.9	0.3
Ice Cream, Lowfat, Soft	22,349	24,097	22,614	1.2	-6.2
Ice Cream, Lowfat, Total	29,467	31,541	30,084	2.1	-4.6
Ice Cream, Nonfat, Hard	1,939	1,904	1,599	-17.5	-16.0
Sherbet, Hard	3,346	3,909	3,651	9.1	-6.6
Water and Juice Ices	3,745	4,243	4,269	14.0	0.6
Frozen Yogurt, Total	6,608	6,513	6,601	-0.1	1.4
Regular & Lowfat, Hard	1,967	1,950	1,981	0.7	1.6
Nonfat, Hard	1,217	1,193	998	-18.0	-16.3
Other Frozen Dairy Products	892	834	581	-34.9	-30.3
Mix for Frozen Products					
Ice Cream Mix	39,478	39,803	39,227	-0.6	-1.4
Ice Cream, Lowfat, Mix	16,348	17,532	16,708	2.2	-4.7
Ice Cream, Nonfat, Mix	1,524	1,188	974	-36.1	-18.0
Sherbet Mix	2,417	2,767	2,533	4.8	-8.5
Yogurt Mix	4,046	3,831	3,883	-4.0	1.4

¹ Revised.

² Includes Cheddar, Colby, Monterey, and Jack.

³ Mostly used for processing into cream or lowfat cottage cheese.

⁴ Fat content 4 percent or more.

⁵ Fat content less than 4 percent.

**Whey and Modified Whey Products: Production, Stocks,
and Prices, United States, October, 2000-2001**

Product	Oct 2000	Sep 2001 ¹	Oct 2001	Change From	
				Oct 2000	Sep 2001
Production					
	<i>1,000 Pounds</i>	<i>1,000 Pounds</i>	<i>1,000 Pounds</i>	<i>Percent</i>	<i>Percent</i>
Condensed Whey, Solids Content ²					
Sweet-Type, Human	6,533	9,445	8,753	34.0	-7.3
Sweet-Type, Animal	1,134	885	943	-16.8	6.6
Dry Whey Products					
Dry Whey, Human	88,342	71,841	75,081	-15.0	4.5
Dry Whey, Animal	5,476	4,518	4,273	-22.0	-5.4
Dry Whey, Total	93,818	76,359	79,354	-15.4	3.9
Reduced Lactose and Minerals					
Human Food	4,422	7,904	6,990	58.1	-11.6
Animal Feed	3,177	2,889	3,088	-2.8	6.9
Lactose, Human and Animal	44,514	46,541	50,869	14.3	9.3
Whey					
Solids in Wet Blends, Animal	2,923	3,334	3,333	14.0	0.0
Protein Concentrate, Human	22,467	23,430	23,401	4.2	-0.1
Protein Concentrate, Animal	4,071	3,797	4,114	1.1	8.3
Manufacturers' Stocks End-of-Month ³					
	<i>1,000 Pounds</i>	<i>1,000 Pounds</i>	<i>1,000 Pounds</i>	<i>Percent</i>	<i>Percent</i>
Dry Whey Products					
Dry Whey, Human	37,582	26,799	25,036	-33.4	-6.6
Dry Whey, Animal	9,826	4,351	3,476	-64.6	-20.1
Reduced Lactose and Minerals					
Human and Animal ⁴	8,938	7,860	6,710	-24.9	-14.6
Lactose, Human and Animal	31,393	23,284	21,818	-30.5	-6.3
Whey Protein Concentrate, Human	11,287	14,703	12,837	13.7	-12.7
Whey Protein Concentrate, Animal	2,078	1,799	1,557	-25.1	-13.5
Manufacturers' Selling Price ⁵					
	<i>Cents per Pound</i>	<i>Cents per Pound</i>	<i>Cents per Pound</i>	<i>Cents Change</i>	<i>Cents Change</i>
Dry Whey, Animal	16.1	27.7	27.0	10.9	-0.7

¹ Revised.

² Final marketable product only. Does not include quantity used or shipped to another plant for further processing into dry whey or modified whey products.

³ Stocks held by manufacturers at all points and in transit.

⁴ Reduced lactose and minerals stocks combined to avoid disclosure of individual operations.

⁵ Prices for bulk goods, f.o.b. plant. Average monthly prices reported by firms.

**Dairy Products: Production by Product and Month,
United States, 2000-2001 ¹**

Product and Month	By Month			Cumulative		
	2000	2001	Change From 2000	2000	2001	Change From 2000
	<i>1,000 Pounds</i>	<i>1,000 Pounds</i>	<i>Percent</i>	<i>1,000 Pounds</i>	<i>1,000 Pounds</i>	<i>Percent</i>
Total Cheese						
Jan	692,946	686,591	-0.9	692,946	686,591	-0.9
Feb	649,472	632,159	-2.7	1,342,418	1,318,750	-1.8
Mar	714,816	714,057	-0.1	2,057,234	2,032,807	-1.2
Apr	693,997	675,080	-2.7	2,751,231	2,707,887	-1.6
May	730,387	708,832	-3.0	3,481,618	3,416,719	-1.9
Jun	695,734	682,337	-1.9	4,177,352	4,099,056	-1.9
Jul	687,591	679,109	-1.2	4,864,943	4,778,165	-1.8
Aug	683,776	663,390	-3.0	5,548,719	5,441,555	-1.9
Sep	653,840	644,525	-1.4	6,202,559	6,086,080	-1.9
Oct	688,543	680,853	-1.1	6,891,102	6,766,933	-1.8
Nov	675,004			7,566,106		
Dec	688,411			8,254,517		
American Cheese						
Jan	317,570	301,114	-5.2	317,570	301,114	-5.2
Feb	303,790	274,753	-9.6	621,360	575,867	-7.3
Mar	314,183	299,478	-4.7	935,543	875,345	-6.4
Apr	312,720	294,336	-5.9	1,248,263	1,169,681	-6.3
May	322,310	309,835	-3.9	1,570,573	1,479,516	-5.8
Jun	308,582	308,076	-0.2	1,879,155	1,787,592	-4.9
Jul	318,832	298,394	-6.4	2,197,987	2,085,986	-5.1
Aug	291,870	285,861	-2.1	2,489,857	2,371,847	-4.7
Sep	275,847	282,494	2.4	2,765,704	2,654,341	-4.0
Oct	285,627	294,715	3.2	3,051,331	2,949,056	-3.4
Nov	279,170			3,330,501		
Dec	303,418			3,633,919		
Cheddar Cheese						
Jan	248,409	234,871	-5.4	248,409	234,871	-5.4
Feb	238,801	214,947	-10.0	487,210	449,818	-7.7
Mar	253,020	234,876	-7.2	740,230	684,694	-7.5
Apr	247,042	230,856	-6.6	987,272	915,550	-7.3
May	257,621	244,540	-5.1	1,244,893	1,160,090	-6.8
Jun	240,462	242,771	1.0	1,485,355	1,402,861	-5.6
Jul	247,106	236,466	-4.3	1,732,461	1,639,327	-5.4
Aug	224,350	220,619	-1.7	1,956,811	1,859,946	-5.0
Sep	207,706	221,554	6.7	2,164,517	2,081,500	-3.8
Oct	217,163	229,028	5.5	2,381,680	2,310,528	-3.0
Nov	209,248			2,590,928		
Dec	237,312			2,828,240		

See footnote(s) at end of table.

--continued

**Dairy Products: Production by Product and Month,
United States, 2000-2001 ¹ (continued)**

Product and Month	By Month			Cumulative		
	2000	2001	Change From 2000	2000	2001	Change From 2000
	<i>1,000 Pounds</i>	<i>1,000 Pounds</i>	<i>Percent</i>	<i>1,000 Pounds</i>	<i>1,000 Pounds</i>	<i>Percent</i>
Italian Cheese						
Jan	277,325	289,173	4.3	277,325	289,173	4.3
Feb	257,551	267,646	3.9	534,876	556,819	4.1
Mar	287,340	298,886	4.0	822,216	855,705	4.1
Apr	277,414	272,945	-1.6	1,099,630	1,128,650	2.6
May	300,587	284,652	-5.3	1,400,217	1,413,302	0.9
Jun	276,067	270,331	-2.1	1,676,284	1,683,633	0.4
Jul	263,320	275,257	4.5	1,939,604	1,958,890	1.0
Aug	274,527	266,279	-3.0	2,214,131	2,225,169	0.5
Sep	270,416	260,223	-3.8	2,484,547	2,485,392	
Oct	275,548	266,302	-3.4	2,760,095	2,751,694	-0.3
Nov	272,572			3,032,667		
Dec	278,286			3,310,953		
Mozzarella Cheese						
Jan	215,158	231,533	7.6	215,158	231,533	7.6
Feb	205,237	214,093	4.3	420,395	445,626	6.0
Mar	226,466	237,066	4.7	646,861	682,692	5.5
Apr	221,979	215,485	-2.9	868,840	898,177	3.4
May	242,862	229,997	-5.3	1,111,702	1,128,174	1.5
Jun	221,418	223,172	0.8	1,333,120	1,351,346	1.4
Jul	214,847	224,814	4.6	1,547,967	1,576,160	1.8
Aug	216,490	211,037	-2.5	1,764,457	1,787,197	1.3
Sep	214,408	211,007	-1.6	1,978,865	1,998,204	1.0
Oct	217,365	216,157	-0.6	2,196,230	2,214,361	0.8
Nov	211,574			2,407,804		
Dec	225,933			2,633,737		
Other Italian						
Jan	62,167	57,640	-7.3	62,167	57,640	-7.3
Feb	52,314	53,553	2.4	114,481	111,193	-2.9
Mar	60,874	61,820	1.6	175,355	173,013	-1.3
Apr	55,435	57,460	3.7	230,790	230,473	-0.1
May	57,725	54,655	-5.3	288,515	285,128	-1.2
Jun	54,649	47,159	-13.7	343,164	332,287	-3.2
Jul	48,473	50,443	4.1	391,637	382,730	-2.3
Aug	58,037	55,242	-4.8	449,674	437,972	-2.6
Sep	56,008	49,216	-12.1	505,682	487,188	-3.7
Oct	58,183	50,145	-13.8	563,865	537,333	-4.7
Nov	60,998			624,863		
Dec	52,353			677,216		

See footnote(s) at end of table.

--continued

**Dairy Products: Production by Product and Month,
United States, 2000-2001 ¹ (continued)**

Product and Month	By Month			Cumulative		
	2000	2001	Change From 2000	2000	2001	Change From 2000
	<i>1,000 Pounds</i>	<i>1,000 Pounds</i>	<i>Percent</i>	<i>1,000 Pounds</i>	<i>1,000 Pounds</i>	<i>Percent</i>
Butter						
Jan	139,928	129,366	-7.5	139,928	129,366	-7.5
Feb	128,195	110,175	-14.1	268,123	239,541	-10.7
Mar	120,987	101,907	-15.8	389,110	341,448	-12.2
Apr	111,738	105,964	-5.2	500,848	447,412	-10.7
May	108,885	109,074	0.2	609,733	556,486	-8.7
Jun	89,140	86,945	-2.5	698,873	643,431	-7.9
Jul	85,362	79,888	-6.4	784,235	723,319	-7.8
Aug	83,651	76,813	-8.2	867,886	800,132	-7.8
Sep	89,881	88,748	-1.3	957,767	888,880	-7.2
Oct	103,921	111,116	6.9	1,061,688	999,996	-5.8
Nov	100,357			1,162,045		
Dec	111,580			1,273,625		
Nonfat Dry Milk, Human						
Jan	134,336	116,667	-13.2	134,336	116,667	-13.2
Feb	131,489	132,415	0.7	265,825	249,082	-6.3
Mar	139,390	121,009	-13.2	405,215	370,091	-8.7
Apr	145,680	131,314	-9.9	550,895	501,405	-9.0
May	137,883	139,903	1.5	688,778	641,308	-6.9
Jun	126,981	131,341	3.4	815,759	772,649	-5.3
Jul	120,744	117,158	-3.0	936,503	889,807	-5.0
Aug	105,301	95,718	-9.1	1,041,804	985,525	-5.4
Sep	87,935	94,829	7.8	1,129,739	1,080,354	-4.4
Oct	100,998	101,301	0.3	1,230,737	1,181,655	-4.0
Nov	99,489			1,330,226		
Dec	121,371			1,451,597		
Total Dry Whey ²						
Jan	106,222	95,366	-10.2	106,222	95,366	-10.2
Feb	95,055	90,271	-5.0	201,277	185,637	-7.8
Mar	103,648	99,397	-4.1	304,925	285,034	-6.5
Apr	101,464	96,592	-4.8	406,389	381,626	-6.1
May	107,773	101,494	-5.8	514,162	483,120	-6.0
Jun	106,314	98,666	-7.2	620,476	581,786	-6.2
Jul	102,862	99,036	-3.7	723,338	680,822	-5.9
Aug	99,267	90,242	-9.1	822,605	771,064	-6.3
Sep	90,137	76,359	-15.3	912,742	847,423	-7.2
Oct	93,818	79,354	-15.4	1,006,560	926,777	-7.9
Nov	86,661			1,093,221		
Dec	94,712			1,187,933		

See footnote(s) at end of table.

--continued

**Dairy Products: Production by Product and Month,
United States, 2000-2001 ¹ (continued)**

Product and Month	By Month			Cumulative		
	2000	2001	Change From 2000	2000	2001	Change From 2000
	<i>1,000 Pounds</i>	<i>1,000 Pounds</i>	<i>Percent</i>	<i>1,000 Pounds</i>	<i>1,000 Pounds</i>	<i>Percent</i>
Cream Cottage Cheese						
Jan	28,725	30,512	6.2	28,725	30,512	6.2
Feb	29,745	28,436	-4.4	58,470	58,948	0.8
Mar	32,544	32,540		91,014	91,488	0.5
Apr	29,881	29,829	-0.2	120,895	121,317	0.3
May	32,223	34,070	5.7	153,118	155,387	1.5
Jun	31,860	31,347	-1.6	184,978	186,734	0.9
Jul	31,365	32,594	3.9	216,343	219,328	1.4
Aug	34,156	33,463	-2.0	250,499	252,791	0.9
Sep	32,561	29,577	-9.2	283,060	282,368	-0.2
Oct	31,233	30,975	-0.8	314,293	313,343	-0.3
Nov	30,106			344,399		
Dec	27,652			372,051		
Lowfat Cottage Cheese						
Jan	28,017	29,707	6.0	28,017	29,707	6.0
Feb	29,918	28,562	-4.5	57,935	58,269	0.6
Mar	32,881	32,381	-1.5	90,816	90,650	-0.2
Apr	29,454	29,590	0.5	120,270	120,240	
May	32,600	34,185	4.9	152,870	154,425	1.0
Jun	31,439	30,401	-3.3	184,309	184,826	0.3
Jul	29,953	31,210	4.2	214,262	216,036	0.8
Aug	32,502	34,647	6.6	246,764	250,683	1.6
Sep	32,056	30,166	-5.9	278,820	280,849	0.7
Oct	30,790	31,175	1.3	309,610	312,024	0.8
Nov	28,512			338,122		
Dec	26,130			364,252		
	<i>1,000 Gallons</i>	<i>1,000 Gallons</i>	<i>Percent</i>	<i>1,000 Gallons</i>	<i>1,000 Gallons</i>	<i>Percent</i>
Ice Cream, Hard						
Jan	61,251	62,974	2.8	61,251	62,974	2.8
Feb	70,632	67,138	-4.9	131,883	130,112	-1.3
Mar	83,032	76,796	-7.5	214,915	206,908	-3.7
Apr	80,202	78,520	-2.1	295,117	285,428	-3.3
May	84,008	78,894	-6.1	379,125	364,322	-3.9
Jun	87,745	83,775	-4.5	466,870	448,097	-4.0
Jul	83,473	81,942	-1.8	550,343	530,039	-3.7
Aug	80,330	79,866	-0.6	630,673	609,905	-3.3
Sep	68,350	70,782	3.6	699,023	680,687	-2.6
Oct	70,671	67,678	-4.2	769,694	748,365	-2.8
Nov	57,223			826,917		
Dec	53,669			880,586		

See footnote(s) at end of table.

--continued

**Dairy Products: Production by Product and Month,
United States, 2000-2001 ¹ (continued)**

Product and Month	By Month			Cumulative		
	2000	2001	Change From 2000	2000	2001	Change From 2000
	<i>1,000 Gallons</i>	<i>1,000 Gallons</i>	<i>Percent</i>	<i>1,000 Gallons</i>	<i>1,000 Gallons</i>	<i>Percent</i>
Ice Cream, Lowfat						
Jan	23,827	24,246	1.8	23,827	24,246	1.8
Feb	26,905	26,324	-2.2	50,732	50,570	-0.3
Mar	34,042	34,043		84,774	84,613	-0.2
Apr	33,495	36,353	8.5	118,269	120,966	2.3
May	38,717	40,901	5.6	156,986	161,867	3.1
Jun	41,918	42,676	1.8	198,904	204,543	2.8
Jul	39,420	40,913	3.8	238,324	245,456	3.0
Aug	37,577	40,164	6.9	275,901	285,620	3.5
Sep	30,793	31,541	2.4	306,694	317,161	3.4
Oct	29,467	30,084	2.1	336,161	347,245	3.3
Nov	23,689			359,850		
Dec	22,235			382,085		
Ice Cream, NF, Hard						
Jan	1,910	1,989	4.1	1,910	1,989	4.1
Feb	1,995	2,206	10.6	3,905	4,195	7.4
Mar	2,533	1,976	-22.0	6,438	6,171	-4.1
Apr	2,404	1,794	-25.4	8,842	7,965	-9.9
May	2,268	2,021	-10.9	11,110	9,986	-10.1
Jun	2,627	2,328	-11.4	13,737	12,314	-10.4
Jul	2,207	1,813	-17.9	15,944	14,127	-11.4
Aug	2,461	1,786	-27.4	18,405	15,913	-13.5
Sep	2,039	1,904	-6.6	20,444	17,817	-12.8
Oct	1,939	1,599	-17.5	22,383	19,416	-13.3
Nov	1,565			23,948		
Dec	1,678			25,626		
Sherbet, Hard						
Jan	3,481	3,506	0.7	3,481	3,506	0.7
Feb	3,969	3,835	-3.4	7,450	7,341	-1.5
Mar	4,706	4,548	-3.4	12,156	11,889	-2.2
Apr	4,648	4,298	-7.5	16,804	16,187	-3.7
May	5,207	5,040	-3.2	22,011	21,227	-3.6
Jun	5,214	5,303	1.7	27,225	26,530	-2.6
Jul	4,582	5,095	11.2	31,807	31,625	-0.6
Aug	4,725	4,740	0.3	36,532	36,365	-0.5
Sep	3,619	3,909	8.0	40,151	40,274	0.3
Oct	3,346	3,651	9.1	43,497	43,925	1.0
Nov	3,003			46,500		
Dec	3,039			49,539		

See footnote(s) at end of table.

--continued

**Dairy Products: Production by Product and Month,
United States, 2000-2001¹ (continued)**

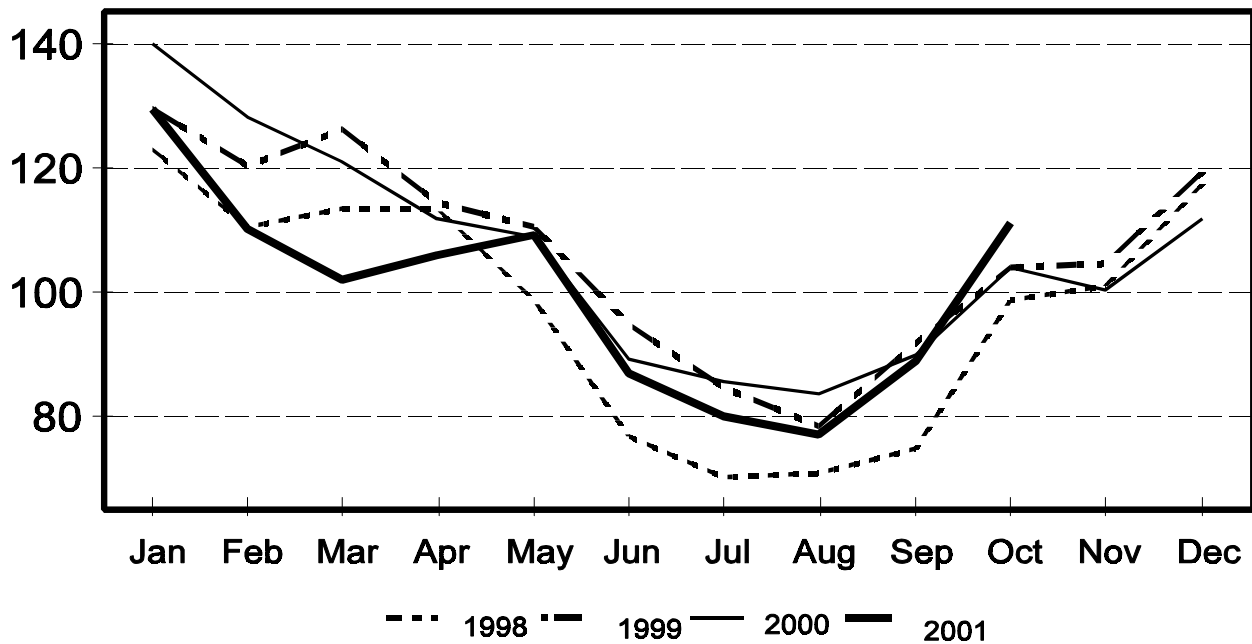
Product and Month	By Month			Cumulative		
	2000	2001	Change From 2000	2000	2001	Change From 2000
	<i>1,000 Gallons</i>	<i>1,000 Gallons</i>	<i>Percent</i>	<i>1,000 Gallons</i>	<i>1,000 Gallons</i>	<i>Percent</i>
Frozen Yogurt						
Jan	6,966	6,290	-9.7	6,966	6,290	-9.7
Feb	6,427	6,428		13,393	12,718	-5.0
Mar	8,088	7,880	-2.6	21,481	20,598	-4.1
Apr	7,426	7,398	-0.4	28,907	27,996	-3.2
May	8,854	8,060	-9.0	37,761	36,056	-4.5
Jun	8,262	8,024	-2.9	46,023	44,080	-4.2
Jul	7,965	8,196	2.9	53,988	52,276	-3.2
Aug	8,910	7,992	-10.3	62,898	60,268	-4.2
Sep	7,106	6,513	-8.3	70,004	66,781	-4.6
Oct	6,608	6,601	-0.1	76,612	73,382	-4.2
Nov	5,372			81,984		
Dec	5,273			87,257		

¹ September 2001 data revised.

² Excludes all modified dry whey products.

Total Butter Production United States

Million Pounds



**Total Cheese, Excluding Cottage Cheese: Production by
State and United States, October 2000-2001**

State	Oct 2000	Sep ¹ 2001	Oct 2001	Change From	
				Oct 2000	Sep 2001
	<i>1,000 Pounds</i>	<i>1,000 Pounds</i>	<i>1,000 Pounds</i>	<i>Percent</i>	<i>Percent</i>
CA	130,343	133,978	139,740	7.2	4.3
ID	49,583	48,315	51,613	4.1	6.8
IL	8,985	8,321	8,915	-0.8	7.1
IA	23,105	16,824	22,505	-2.6	33.8
MA	79	83	106	34.2	27.7
MN	53,138	41,339	45,791	-13.8	10.8
MO	10,221	8,218	9,337	-8.6	13.6
NY	61,915	54,325	62,869	1.5	15.7
ND	1,075	1,108	1,182	10.0	6.7
OH	11,206	11,059	12,102	8.0	9.4
PA	29,782	28,726	29,326	-1.5	2.1
SD	11,335	13,598	12,557	10.8	-7.7
UT	6,027	5,979	4,688	-22.2	-21.6
WA		11,675	12,285		5.2
WI	184,929	173,165	176,928	-4.3	2.2
Oth Sts ²	106,820	87,812	90,909	-14.9	3.5
US	688,543	644,525	680,853	-1.1	5.6
N Atlantic	106,489	95,459	106,848	0.3	11.9
S Atlantic	3,210	3,597	3,350	4.4	-6.9
E N Central	220,014	204,373	209,142	-4.9	2.3
W N Central	106,667	88,518	98,875	-7.3	11.7
S Central	4,229	4,904	4,119	-2.6	-16.0
West	247,934	247,674	258,519	4.3	4.4

¹ Revised.

² States not shown when fewer than 3 plants reported or individual plant operations could be disclosed. Percent change shown only when comparable States are included in the calculation.

American Cheese: Production by State and United States, October 2000-2001

State	Oct 2000	Sep ¹ 2001	Oct 2001	Change From	
				Oct 2000	Sep 2001
	<i>1,000 Pounds</i>	<i>1,000 Pounds</i>	<i>1,000 Pounds</i>	<i>Percent</i>	<i>Percent</i>
CA	52,105	63,584	65,115	25.0	2.4
ID	40,657	38,976	41,588	2.3	6.7
IA	10,793	9,412	10,196	-5.5	8.3
MN	50,178	38,929	42,407	-15.5	8.9
NY	5,600	7,698	7,353	31.3	-4.5
ND	1,075	1,108	1,182	10.0	6.7
OH	1,806	1,858	2,505	38.7	34.8
OR	5,370	6,352	7,337	36.6	15.5
SD	5,859	8,469	7,076	20.8	-16.4
UT	2,365	3,066	1,401	-40.8	-54.3
WA		11,479	12,109		5.5
WI	70,625	63,800	67,800	-4.0	6.3
Oth Sts ²	39,194	27,763	28,646	-26.9	3.2
US	285,627	282,494	294,715	3.2	4.3
Atlantic	11,340	13,126	13,354	17.8	1.7
E N Central	73,813	67,025	71,606	-3.0	6.8
W N Central	67,913	57,921	60,864	-10.4	5.1
S Central	3,731	4,495	3,670	-1.6	-18.4
West	128,830	139,927	145,221	12.7	3.8

¹ Revised.

² States not shown when fewer than 3 plants reported or individual plant operations could be disclosed. Percent change shown only when comparable States are included in the calculation.

Cheddar Cheese: Production by State and United States, October 2000-2001

State	Oct 2000	Sep ¹ 2001	Oct 2001	Change From	
				Oct 2000	Sep 2001
	<i>1,000 Pounds</i>	<i>1,000 Pounds</i>	<i>1,000 Pounds</i>	<i>Percent</i>	<i>Percent</i>
CA	36,957	49,552	48,700	31.8	-1.7
ID	20,737	18,290	20,715	-0.1	13.3
MN	45,899	37,395	40,707	-11.3	8.9
NY	5,507	7,630	7,271	32.0	-4.7
WI	55,184	50,600	53,700	-2.7	6.1
Oth Sts ²	52,879	58,087	57,935	9.6	-0.3
US	217,163	221,554	229,028	5.5	3.4
Atlantic	10,774	12,830	12,808	18.9	-0.2
E N Cen	56,753	52,039	55,678	-1.9	7.0
W N Cen	55,950	49,945	52,690	-5.8	5.5
S Cen	3,731	4,495	3,670	-1.6	-18.4
West	89,955	102,245	104,182	15.8	1.9

¹ Revised.

² States not shown when fewer than 3 plants reported or individual plant operations could be disclosed. Percent change shown only when comparable States are included in the calculation.

Mozzarella Cheese: Production by State and United States, October 2000-2001

State	Oct 2000	Sep ¹ 2001	Oct 2001	Change From	
				Oct 2000	Sep 2001
	<i>1,000 Pounds</i>	<i>1,000 Pounds</i>	<i>1,000 Pounds</i>	<i>Percent</i>	<i>Percent</i>
CA	55,891	54,389	59,339	6.2	9.1
NY	18,702	19,004	18,442	-1.4	-3.0
SD	4,885	4,688	5,036	3.1	7.4
WI	57,585	62,100	60,800	5.6	-2.1
Oth Sts ²	80,302	70,826	72,540	-9.7	2.4
US	217,365	211,007	216,157	-0.6	2.4
Atlantic	40,624	39,558	41,172	1.3	4.1
E N Central	71,292	72,538	70,977	-0.4	-2.2
W N Central	17,752				
West	87,697	82,554	87,890	0.2	6.5

¹ Revised.

² States not shown when fewer than 3 plants reported or individual plant operations could be disclosed. Percent change shown only when comparable States are included in the calculation.

Butter: Production by State and United States, October 2000-2001

State	Oct 2000	Sep ¹ 2001	Oct 2001	Change From	
				Oct 2000	Sep 2001
	<i>1,000 Pounds</i>	<i>1,000 Pounds</i>	<i>1,000 Pounds</i>	<i>Percent</i>	<i>Percent</i>
CA	29,947	23,154	30,192	0.8	30.4
MN	4,016				
NY	1,309	2,088	2,027	54.9	-2.9
ND	405				
PA	6,655	4,562	6,013	-9.6	31.8
WA		8,062	8,873		10.1
WI	24,730	22,948	31,415	27.0	36.9
Oth Sts ²	36,859	27,934	32,596	-11.6	16.7
US	103,921	88,748	111,116	6.9	25.2
N Atlantic	11,080	9,037	11,404	2.9	26.2
E N Central	29,121	26,496	34,645	19.0	30.8
W N Central	10,530	7,851	9,341	-11.3	19.0
West	45,598	36,026	43,604	-4.4	21.0

¹ Revised.

² States not shown when fewer than 3 plants reported or individual plant operations could be disclosed. Percent change shown only when comparable States are included in the calculation.

**Nonfat Dry Milk, Human: Production by State
and United States, October 2000-2001**

State	Oct 2000	Sep ¹ 2001	Oct 2001	Change From	
				Oct 2000	Sep 2001
	<i>1,000 Pounds</i>	<i>1,000 Pounds</i>	<i>1,000 Pounds</i>	<i>Percent</i>	<i>Percent</i>
CA	53,916	52,962	53,991	0.1	1.9
MN & WI	1,718				
NM	2,913				
WA		15,333	15,697		2.4
Oth Sts ²	42,451	26,534	31,613	-25.5	19.1
US	100,998	94,829	101,301	0.3	6.8
Atlantic	4,779	6,455	9,583	100.5	48.5
E N Central	3,282	1,476	2,646	-19.4	79.3
W N Central	8,350	3,977	4,633	-44.5	16.5
S Central	2,211				
West	82,376	81,227	82,745	0.4	1.9

¹ Revised.

² States not shown when fewer than 3 plants reported or individual plant operations could be disclosed. Percent change shown only when comparable States are included in the calculation.

**Dry Whey, Human: Production by State
and United States, October 2000-2001**

State	Oct 2000	Sep ¹ 2001	Oct 2001	Change From	
				Oct 2000	Sep 2001
	<i>1,000 Pounds</i>	<i>1,000 Pounds</i>	<i>1,000 Pounds</i>	<i>Percent</i>	<i>Percent</i>
CA	11,437	10,572	10,588	-7.4	0.2
MN	6,111	5,299	5,264	-13.9	-0.7
NY	9,834	9,465	8,954	-8.9	-5.4
PA	7,116	6,450	6,679	-6.1	3.6
WA		5,019	7,128		42.0
WI	23,180	21,195	22,200	-4.2	4.7
Oth Sts ²	30,664	13,841	14,268	-53.5	3.1
US	88,342	71,841	75,081	-15.0	4.5
Atlantic	16,950	15,915	15,633	-7.8	-1.8
Central	40,543	36,793	37,757	-6.9	2.6
West	30,849	19,133	21,691	-29.7	13.4

¹ Revised.

² States not shown when fewer than 3 plants reported or individual plant operations could be disclosed. Percent change shown only when comparable States are included in the calculation.

**Lactose: Production by State and
United States, October 2000-2001**

State	Oct 2000	Sep ¹ 2001	Oct 2001	Change From	
				Oct 2000	Sep 2001
	<i>1,000 Pounds</i>	<i>1,000 Pounds</i>	<i>1,000 Pounds</i>	<i>Percent</i>	<i>Percent</i>
MN	8,002	7,291	7,481	-6.5	2.6
WI	8,320	9,101	9,488	14.0	4.3
Oth Sts ²	28,192	30,149	33,900	20.2	12.4
US	44,514	46,541	50,869	14.3	9.3
E N Central		9,883	10,261		3.8
W N Central	14,306	13,124	13,374	-6.5	1.9
West	20,058	21,418	24,556	22.4	14.7

¹ Revised.

² States not shown when fewer than 3 plants reported or individual plant operations could be disclosed. Percent change shown only when comparable States are included in the calculation.

**Whey Protein Concentrate, Human: Production by State
and United States, October 2000-2001**

State	Oct 2000	Sep ¹ 2001	Oct 2001	Change From	
				Oct 2000	Sep 2001
	<i>1,000 Pounds</i>	<i>1,000 Pounds</i>	<i>1,000 Pounds</i>	<i>Percent</i>	<i>Percent</i>
CA	7,162	8,908	8,614	20.3	-3.3
MN	3,262	3,025	3,288	0.8	8.7
WI	4,035	3,976	3,965	-1.7	-0.3
Oth Sts ²	8,008	7,521	7,534	-5.9	0.2
US	22,467	23,430	23,401	4.2	-0.1

¹ Revised.

² States not shown when fewer than 3 plants reported or individual plant operations could be disclosed. Percent change shown only when comparable States are included in the calculation.

Ice Cream, Hard: Production by State and United States, October 2000-2001

State	Oct 2000	Sep ¹ 2001	Oct 2001	Change From	
				Oct 2000	Sep 2001
	<i>1,000 Gallons</i>	<i>1,000 Gallons</i>	<i>1,000 Gallons</i>	<i>Percent</i>	<i>Percent</i>
CA	8,948	10,609	9,379	4.8	-11.6
FL	1,689	1,900	2,000	18.4	5.3
IL	2,579	3,190	2,819	9.3	-11.6
IN	6,566	7,080	7,191	9.5	1.6
MD	1,810	1,713	1,599	-11.7	-6.7
MA	6,941	5,209	5,455	-21.4	4.7
MI	1,752	1,657	1,785	1.9	7.7
MN	3,264	3,482	3,693	13.1	6.1
NH	8	13	8		-38.5
NM	219	219	219		
NY	2,691	2,000	2,100	-22.0	5.0
NC	1,318	1,651	1,236	-6.2	-25.1
ND	115				
OH	2,578	2,671	2,702	4.8	1.2
OR	915	940	860	-6.0	-8.5
PA	3,321	3,449	3,316	-0.2	-3.9
SD	2	2	3	50.0	50.0
TN	1,295	1,551	1,413	9.1	-8.9
TX	3,907	3,704	3,966	1.5	7.1
UT	967	1,182	1,041	7.7	-11.9
WA	1,161	929	1,048	-9.7	12.8
Oth Sts ²	18,625	17,631	15,845	-14.9	-10.1
US	70,671	70,782	67,678	-4.2	-4.4
N Atlantic	15,298	13,426	13,100	-14.4	-2.4
S Atlantic	6,703	6,798	6,145	-8.3	-9.6
E N Central	14,246	15,325	15,261	7.1	-0.4
W N Central	10,965	10,984	10,288	-6.2	-6.3
S Central	8,453	8,111	8,095	-4.2	-0.2
West	15,006	16,138	14,789	-1.4	-8.4

¹ Revised.

² States not shown when fewer than 3 plants reported or individual plant operations could be disclosed. Percent change shown only when comparable States are included in the calculation.

**Canned Milk and Dry Milk Products: Manufacturers' Shipments,
Stocks, and Selling Prices, October, 2000-2001**

Product	Oct 2000	Sep 2001 ¹	Oct 2001	Change From	
				Oct 2000	Sep 2001
	Manufacturers' Shipments ²				
	<i>1,000 Pounds</i>	<i>1,000 Pounds</i>	<i>1,000 Pounds</i>	<i>Percent</i>	<i>Percent</i>
Nonfat Dry Milk, Human	128,589	89,158	91,811	-28.6	3.0
	Manufacturers' Stocks End-of-Month ³				
	<i>1,000 Pounds</i>	<i>1,000 Pounds</i>	<i>1,000 Pounds</i>	<i>Percent</i>	<i>Percent</i>
Canned Evaporated and Condensed Whole Milk	41,623	82,473	56,849	36.6	-31.1
Nonfat Dry Milk, Human	145,720	102,877	100,641	-30.9	-2.2
Dry Buttermilk, Total	3,823	4,056	3,885	1.6	-4.2

¹ Revised.

² For dry products, shipments of bulk goods only.

³ Stocks held by manufacturers at all points and in transit.

Procedures and Reliability: Estimates included in this report are based on data provided each month by manufacturers of these products. In 32 States, the State Departments of Agriculture assist in collection of data, which eliminates duplicate reporting and reduces respondent burden. Data are collected by mail, personal and telephone interviews following the close of each month. There were 1,124 manufacturers that made one or more products in 2000. Each month, reports are generally received from all dairy plants in States with small numbers of plants. In States with large numbers of plants, survey procedures are designed to obtain monthly reports from all large plants and from a sample of small plants. Monthly estimates are based upon returns from about 70 percent of the plants which account for 70 to 90 percent of the total production of major dairy products.

Revision Policy: Monthly estimates are subject to revision the month following the preliminary estimates. Annual estimates are published in the "**Dairy Products**" report published each April which includes any revisions made to current and previous year. In preparing the annual report, an attempt is made to get information from all plants.

The next "Dairy Products" report will be released at 3 p.m. ET on January 4, 2002.

The United States Department of Agriculture (USDA) prohibits discrimination in all its programs on the basis of race, color, national origin, gender, religion, age, disability, political beliefs, sexual orientation, and marital or family status. (Not all prohibited bases apply to all programs.) Persons with disabilities who require alternative means for communication of program information (braille, large print, audiotape, etc.) should contact the USDA's TARGET Center at 202-720-2600 (voice and TDD).

To file a complaint of discrimination, write USDA, Director, Office of Civil Rights, Room 326-W, Whitten Building, 1400 Independence Avenue, SW, Washington, D.C., 20250-9410, or call 202-720-5964 (voice or TDD). USDA is an equal opportunity provider and employer.

ACCESS TO REPORTS!!

For your convenience, there are several ways to obtain NASS reports, data products, and services:

INTERNET ACCESS

All NASS reports are available free of charge on the worldwide Internet. For access, connect to the Internet and go to the NASS Home Page at: <http://www.usda.gov/nass/>. Select "Today's Reports" or Publications and then Reports by Calendar or Publications and then Search, by Title or Subject.

E-MAIL SUBSCRIPTION

There are two options for subscribing via e-mail. All NASS reports are available by subscription free of charge direct to your e-mail address. 1) Starting with the NASS Home Page at <http://www.usda.gov/nass/>, click on **Publications**, then click on the **Subscribe by E-mail** button which takes you to the page describing e-mail delivery of reports. Finally, click on **Go to the Subscription Page** and follow the instructions. 2) If you do NOT have Internet access, send an e-mail message to: usda-reports@usda.mannlib.cornell.edu. In the body of the message type the word: **list**.

AUTOFAX ACCESS

NASSFax service is available for some reports from your fax machine. Please call 202-720-2000, using the handset attached to your fax. Respond to the voice prompts. Document 0411 is a list of available reports.

PRINTED REPORTS OR DATA PRODUCTS

CALL OUR TOLL-FREE ORDER DESK: 800-999-6779 (U.S. and Canada)
Other areas, please call 703-605-6220 FAX: 703-605-6900
(Visa, MasterCard, check, or money order acceptable for payment.)

ASSISTANCE

For **assistance** with general agricultural statistics or further information about NASS or its products or services, contact the **Agricultural Statistics Hotline** at **800-727-9540**, 7:30 a.m. to 4:00 p.m. ET, or e-mail: nass@nass.usda.gov.