

Released February 4, 2002, by the National Agricultural Statistics Service (NASS), Agricultural Statistics Board, U.S. Department of Agriculture. For information on "Dairy Products" call Tony Dorn at (202) 720-9168, office hours 7:00 a.m. to 4:00 p.m. ET.

## December 2001 Highlights

**Total cheese** output (excluding cottage cheese) was 699 million pounds, 1.6 percent above December 2000 and 1.9 percent above November 2001.

**American type cheese** production totaled 313 million pounds, 3.1 percent above December 2000 and 9.1 percent above November 2001.

**Butter** production was 123 million pounds in December, 9.9 percent above December 2000 and 21.1 percent above November 2001.

**Frozen dessert:** (comparisons with December 2000)

Ice cream, Regular (hard) --- 56.5 million gallons, up 5.4 percent.

Ice cream, Lowfat (total) --- 24.2 million gallons, up 9.0 percent.

Ice cream, Nonfat (hard) --- 1.40 million gallons, down 16.7 percent.

Sherbet (hard) --- 3.17 million gallons, up 4.2 percent.

Frozen Yogurt (total) --- 5.47 million gallons, up 3.7 percent.

**Nonfat dry milk for human food:** (compared with December 2000) --- 144 million pounds, up 18.9 percent.

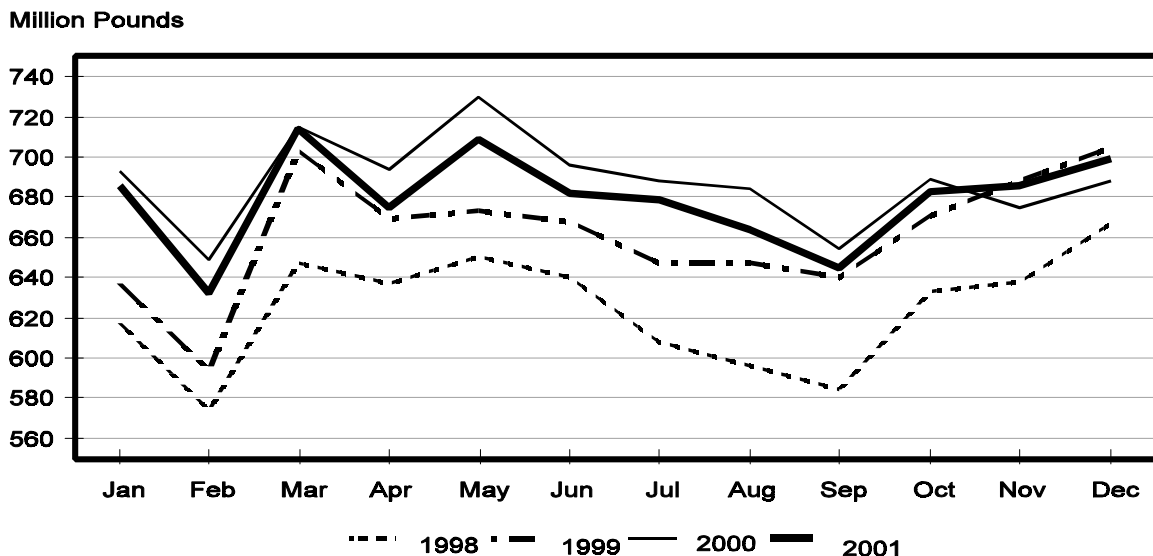
**Dry whey products:** (comparisons with December 2000)

Dry whey, human --- 85.1 million pounds, down 3.7 percent.

Dry whey, animal --- 5.33 million pounds, down 15.5 percent.

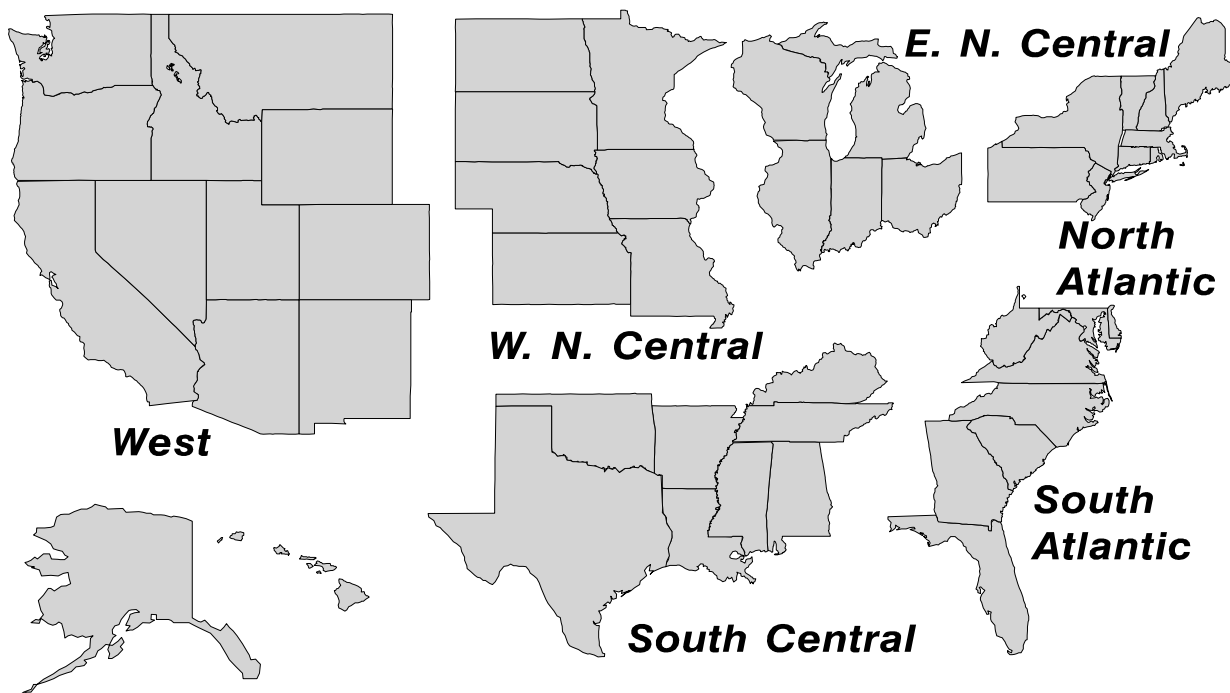
Dry whey, total --- 90.5 million pounds, down 4.5 percent.

## Total Cheese Production United States



## U. S. Geographic Regions Dairy Products

State totals are not published when fewer than 3 firms have reported or one firm comprises more than 60 percent of the State total. If we are not able to publish a region for confidentiality reasons, it will be combined with other regions when possible. For example, if North Atlantic can not be published, then it will be combined with South Atlantic to publish Atlantic. The West North Central and East North Central will be combined, if necessary, to form North Central. In the event that neither could be published, they may be combined with South Central to publish Central. Some tables will have only limited regions shown, therefore the regions may not add to the United States total.



**Dairy Products: Production by Product,  
United States, December, 2000-2001**

Product	Dec 2000	Nov 2001 <sup>1</sup>	Dec 2001	Change From	
				Dec 2000	Nov 2001
	<i>1,000 Pounds</i>	<i>1,000 Pounds</i>	<i>1,000 Pounds</i>	<i>Percent</i>	<i>Percent</i>
Butter	111,580	101,299	122,637	9.9	21.1
Cheese					
American Types <sup>2</sup>	303,418	286,661	312,790	3.1	9.1
Cheddar	237,312	219,187	241,471	1.8	10.2
Swiss	18,921	19,645	20,205	6.8	2.9
Brick and Muenster	7,596	7,369	7,717	1.6	4.7
Cream and Neufchatel	56,588	69,393	46,929	-17.1	-32.4
Hispanic	7,945	8,911	8,294	4.4	-6.9
Mozzarella	225,933	219,137	230,849	2.2	5.3
Other Italian Types	52,353	58,747	56,048	7.1	-4.6
Total Italian Types	278,286	277,884	286,897	3.1	3.2
All Other Types	15,657	16,383	16,654	6.4	1.7
Total	688,411	686,246	699,486	1.6	1.9
Cottage Cheese, Curd <sup>3</sup>	33,383	34,748	33,328	-0.2	-4.1
Cottage Cheese, Cream <sup>4</sup>	27,652	29,890	27,936	1.0	-6.5
Cottage Cheese, Lowfat <sup>5</sup>	26,130	28,249	25,479	-2.5	-9.8
Canned Evaporated and Condensed Whole Milk	37,072	41,933	37,377	0.8	-10.9
Dry Whole Milk	6,513	3,267	2,900	-55.5	-11.2
Nonfat Dry Milk, Human	121,371	121,271	144,309	18.9	19.0
Dry Skim Milk, Animal	528	419	510	-3.4	21.7
Dry Buttermilk	5,554	4,130	5,604	0.9	35.7
Yogurt, Plain & Flavored	137,059	144,477	160,778	17.3	11.3
	<i>1,000 Gallons</i>	<i>1,000 Gallons</i>	<i>1,000 Gallons</i>	<i>Percent</i>	<i>Percent</i>
Frozen Products					
Ice Cream, Hard	53,669	60,565	56,548	5.4	-6.6
Ice Cream, Lowfat, Hard	5,621	5,736	6,501	15.7	13.3
Ice Cream, Lowfat, Soft	16,614	19,490	17,726	6.7	-9.1
Ice Cream, Lowfat, Total	22,235	25,226	24,227	9.0	-4.0
Ice Cream, Nonfat, Hard	1,678	1,639	1,398	-16.7	-14.7
Sherbet, Hard	3,039	3,146	3,166	4.2	0.6
Water and Juice Ices	2,730	2,836	3,150	15.4	11.1
Frozen Yogurt, Total	5,273	5,979	5,467	3.7	-8.6
Regular & Lowfat, Hard	1,746	1,738	1,532	-12.3	-11.9
Nonfat, Hard	1,088	888	892	-18.0	0.5
Other Frozen Dairy Products	822	599	534	-35.0	-10.9
Mix for Frozen Products					
Ice Cream Mix	29,533	34,639	33,506	13.5	-3.3
Ice Cream, Lowfat, Mix	12,305	14,030	13,436	9.2	-4.2
Ice Cream, Nonfat, Mix	1,270	957	884	-30.4	-7.6
Sherbet Mix	2,036	2,194	2,217	8.9	1.0
Yogurt Mix	3,444	3,517	3,216	-6.6	-8.6

<sup>1</sup> Revised.

<sup>2</sup> Includes Cheddar, Colby, Monterey, and Jack.

<sup>3</sup> Mostly used for processing into cream or lowfat cottage cheese.

<sup>4</sup> Fat content 4 percent or more.

<sup>5</sup> Fat content less than 4 percent.

**Whey and Modified Whey Products: Production, Stocks,  
and Prices, United States, December, 2000-2001**

Product	Dec 2000	Nov 2001 <sup>1</sup>	Dec 2001	Change From	
				Dec 2000	Nov 2001
<b>Production</b>					
	<i>1,000 Pounds</i>	<i>1,000 Pounds</i>	<i>1,000 Pounds</i>	<i>Percent</i>	<i>Percent</i>
Condensed Whey, Solids Content <sup>2</sup>					
Sweet-Type, Human	7,862	11,772	12,814	63.0	8.9
Sweet-Type, Animal	1,155	1,267	1,291	11.8	1.9
Dry Whey Products					
Dry Whey, Human	88,411	77,574	85,126	-3.7	9.7
Dry Whey, Animal	6,301	4,719	5,325	-15.5	12.8
Dry Whey, Total	94,712	82,293	90,451	-4.5	9.9
Reduced Lactose and Minerals					
Human Food	7,118	7,098	7,046	-1.0	-0.7
Animal Feed	2,806	3,188	3,204	14.2	0.5
Lactose, Human and Animal	43,400	49,708	51,311	18.2	3.2
Whey					
Solids in Wet Blends, Animal	3,385	3,495	3,373	-0.4	-3.5
Protein Concentrate, Human	25,539	23,305	24,569	-3.8	5.4
Protein Concentrate, Animal	3,948	3,920	3,993	1.1	1.9
<b>Manufacturers' Stocks End-of-Month <sup>3</sup></b>					
	<i>1,000 Pounds</i>	<i>1,000 Pounds</i>	<i>1,000 Pounds</i>	<i>Percent</i>	<i>Percent</i>
Dry Whey Products					
Dry Whey, Human	37,473	27,132	35,900	-4.2	32.3
Dry Whey, Animal	5,961	2,231	1,937	-67.5	-13.2
Reduced Lactose and Minerals					
Human and Animal <sup>4</sup>	6,929	7,418	7,733	11.6	4.2
Lactose, Human and Animal	29,880	20,455	27,264	-8.8	33.3
Whey Protein Concentrate, Human	10,856	14,099	17,635	62.4	25.1
Whey Protein Concentrate, Animal	1,257	1,799	929	-26.1	-48.4
<b>Manufacturers' Selling Price <sup>5</sup></b>					
	<i>Cents per Pound</i>	<i>Cents per Pound</i>	<i>Cents per Pound</i>	<i>Cents Change</i>	<i>Cents Change</i>
Dry Whey, Animal	21.4	26.7	27.7	6.3	1.0

<sup>1</sup> Revised.

<sup>2</sup> Final marketable product only. Does not include quantity used or shipped to another plant for further processing into dry whey or modified whey products.

<sup>3</sup> Stocks held by manufacturers at all points and in transit.

<sup>4</sup> Reduced lactose and minerals stocks combined to avoid disclosure of individual operations.

<sup>5</sup> Prices for bulk goods, f.o.b. plant. Average monthly prices reported by firms.

**Dairy Products: Production by Product and Month,  
United States, 2000-2001 <sup>1</sup>**

Product and Month	By Month			Cumulative		
	2000	2001	Change From 2000	2000	2001	Change From 2000
	<i>1,000 Pounds</i>	<i>1,000 Pounds</i>	<i>Percent</i>	<i>1,000 Pounds</i>	<i>1,000 Pounds</i>	<i>Percent</i>
<b>Total Cheese</b>						
Jan	692,946	686,591	-0.9	692,946	686,591	-0.9
Feb	649,472	632,159	-2.7	1,342,418	1,318,750	-1.8
Mar	714,816	714,057	-0.1	2,057,234	2,032,807	-1.2
Apr	693,997	675,080	-2.7	2,751,231	2,707,887	-1.6
May	730,387	708,832	-3.0	3,481,618	3,416,719	-1.9
Jun	695,734	682,337	-1.9	4,177,352	4,099,056	-1.9
Jul	687,591	679,109	-1.2	4,864,943	4,778,165	-1.8
Aug	683,776	663,390	-3.0	5,548,719	5,441,555	-1.9
Sep	653,840	644,525	-1.4	6,202,559	6,086,080	-1.9
Oct	688,543	682,957	-0.8	6,891,102	6,769,037	-1.8
Nov	675,004	686,246	1.7	7,566,106	7,455,283	-1.5
Dec	688,411	699,486	1.6	8,254,517	8,154,769	-1.2
<b>American Cheese</b>						
Jan	317,570	301,114	-5.2	317,570	301,114	-5.2
Feb	303,790	274,753	-9.6	621,360	575,867	-7.3
Mar	314,183	299,478	-4.7	935,543	875,345	-6.4
Apr	312,720	294,336	-5.9	1,248,263	1,169,681	-6.3
May	322,310	309,835	-3.9	1,570,573	1,479,516	-5.8
Jun	308,582	308,076	-0.2	1,879,155	1,787,592	-4.9
Jul	318,832	298,394	-6.4	2,197,987	2,085,986	-5.1
Aug	291,870	285,861	-2.1	2,489,857	2,371,847	-4.7
Sep	275,847	282,494	2.4	2,765,704	2,654,341	-4.0
Oct	285,627	296,405	3.8	3,051,331	2,950,746	-3.3
Nov	279,170	286,661	2.7	3,330,501	3,237,407	-2.8
Dec	303,418	312,790	3.1	3,633,919	3,550,197	-2.3
<b>Cheddar Cheese</b>						
Jan	248,409	234,871	-5.4	248,409	234,871	-5.4
Feb	238,801	214,947	-10.0	487,210	449,818	-7.7
Mar	253,020	234,876	-7.2	740,230	684,694	-7.5
Apr	247,042	230,856	-6.6	987,272	915,550	-7.3
May	257,621	244,540	-5.1	1,244,893	1,160,090	-6.8
Jun	240,462	242,771	1.0	1,485,355	1,402,861	-5.6
Jul	247,106	236,466	-4.3	1,732,461	1,639,327	-5.4
Aug	224,350	220,619	-1.7	1,956,811	1,859,946	-5.0
Sep	207,706	221,554	6.7	2,164,517	2,081,500	-3.8
Oct	217,163	230,652	6.2	2,381,680	2,312,152	-2.9
Nov	209,248	219,187	4.7	2,590,928	2,531,339	-2.3
Dec	237,312	241,471	1.8	2,828,240	2,772,810	-2.0

See footnote(s) at end of table.

--continued

**Dairy Products: Production by Product and Month,  
United States, 2000-2001 <sup>1</sup> (continued)**

Product and Month	By Month			Cumulative		
	2000	2001	Change From 2000	2000	2001	Change From 2000
	<i>1,000 Pounds</i>	<i>1,000 Pounds</i>	<i>Percent</i>	<i>1,000 Pounds</i>	<i>1,000 Pounds</i>	<i>Percent</i>
<b>Italian Cheese</b>						
Jan	277,325	289,173	4.3	277,325	289,173	4.3
Feb	257,551	267,646	3.9	534,876	556,819	4.1
Mar	287,340	298,886	4.0	822,216	855,705	4.1
Apr	277,414	272,945	-1.6	1,099,630	1,128,650	2.6
May	300,587	284,652	-5.3	1,400,217	1,413,302	0.9
Jun	276,067	270,331	-2.1	1,676,284	1,683,633	0.4
Jul	263,320	275,257	4.5	1,939,604	1,958,890	1.0
Aug	274,527	266,279	-3.0	2,214,131	2,225,169	0.5
Sep	270,416	260,223	-3.8	2,484,547	2,485,392	
Oct	275,548	266,728	-3.2	2,760,095	2,752,120	-0.3
Nov	272,572	277,884	1.9	3,032,667	3,030,004	-0.1
Dec	278,286	286,897	3.1	3,310,953	3,316,901	0.2
<b>Mozzarella Cheese</b>						
Jan	215,158	231,533	7.6	215,158	231,533	7.6
Feb	205,237	214,093	4.3	420,395	445,626	6.0
Mar	226,466	237,066	4.7	646,861	682,692	5.5
Apr	221,979	215,485	-2.9	868,840	898,177	3.4
May	242,862	229,997	-5.3	1,111,702	1,128,174	1.5
Jun	221,418	223,172	0.8	1,333,120	1,351,346	1.4
Jul	214,847	224,814	4.6	1,547,967	1,576,160	1.8
Aug	216,490	211,037	-2.5	1,764,457	1,787,197	1.3
Sep	214,408	211,007	-1.6	1,978,865	1,998,204	1.0
Oct	217,365	216,040	-0.6	2,196,230	2,214,244	0.8
Nov	211,574	219,137	3.6	2,407,804	2,433,381	1.1
Dec	225,933	230,849	2.2	2,633,737	2,664,230	1.2
<b>Other Italian</b>						
Jan	62,167	57,640	-7.3	62,167	57,640	-7.3
Feb	52,314	53,553	2.4	114,481	111,193	-2.9
Mar	60,874	61,820	1.6	175,355	173,013	-1.3
Apr	55,435	57,460	3.7	230,790	230,473	-0.1
May	57,725	54,655	-5.3	288,515	285,128	-1.2
Jun	54,649	47,159	-13.7	343,164	332,287	-3.2
Jul	48,473	50,443	4.1	391,637	382,730	-2.3
Aug	58,037	55,242	-4.8	449,674	437,972	-2.6
Sep	56,008	49,216	-12.1	505,682	487,188	-3.7
Oct	58,183	50,688	-12.9	563,865	537,876	-4.6
Nov	60,998	58,747	-3.7	624,863	596,623	-4.5
Dec	52,353	56,048	7.1	677,216	652,671	-3.6

See footnote(s) at end of table.

--continued

**Dairy Products: Production by Product and Month,  
United States, 2000-2001 <sup>1</sup> (continued)**

Product and Month	By Month			Cumulative		
	2000	2001	Change From 2000	2000	2001	Change From 2000
	<i>1,000 Pounds</i>	<i>1,000 Pounds</i>	<i>Percent</i>	<i>1,000 Pounds</i>	<i>1,000 Pounds</i>	<i>Percent</i>
Butter						
Jan	139,928	129,366	-7.5	139,928	129,366	-7.5
Feb	128,195	110,175	-14.1	268,123	239,541	-10.7
Mar	120,987	101,907	-15.8	389,110	341,448	-12.2
Apr	111,738	105,964	-5.2	500,848	447,412	-10.7
May	108,885	109,074	0.2	609,733	556,486	-8.7
Jun	89,140	86,945	-2.5	698,873	643,431	-7.9
Jul	85,362	79,888	-6.4	784,235	723,319	-7.8
Aug	83,651	76,813	-8.2	867,886	800,132	-7.8
Sep	89,881	88,748	-1.3	957,767	888,880	-7.2
Oct	103,921	111,047	6.9	1,061,688	999,927	-5.8
Nov	100,357	101,299	0.9	1,162,045	1,101,226	-5.2
Dec	111,580	122,637	9.9	1,273,625	1,223,863	-3.9
Nonfat Dry Milk, Human						
Jan	134,336	116,667	-13.2	134,336	116,667	-13.2
Feb	131,489	132,415	0.7	265,825	249,082	-6.3
Mar	139,390	121,009	-13.2	405,215	370,091	-8.7
Apr	145,680	131,314	-9.9	550,895	501,405	-9.0
May	137,883	139,903	1.5	688,778	641,308	-6.9
Jun	126,981	131,341	3.4	815,759	772,649	-5.3
Jul	120,744	117,158	-3.0	936,503	889,807	-5.0
Aug	105,301	95,718	-9.1	1,041,804	985,525	-5.4
Sep	87,935	94,829	7.8	1,129,739	1,080,354	-4.4
Oct	100,998	102,786	1.8	1,230,737	1,183,140	-3.9
Nov	99,489	121,271	21.9	1,330,226	1,304,411	-1.9
Dec	121,371	144,309	18.9	1,451,597	1,448,720	-0.2
Total Dry Whey <sup>2</sup>						
Jan	106,222	95,366	-10.2	106,222	95,366	-10.2
Feb	95,055	90,271	-5.0	201,277	185,637	-7.8
Mar	103,648	99,397	-4.1	304,925	285,034	-6.5
Apr	101,464	96,592	-4.8	406,389	381,626	-6.1
May	107,773	101,494	-5.8	514,162	483,120	-6.0
Jun	106,314	98,666	-7.2	620,476	581,786	-6.2
Jul	102,862	99,036	-3.7	723,338	680,822	-5.9
Aug	99,267	90,242	-9.1	822,605	771,064	-6.3
Sep	90,137	76,359	-15.3	912,742	847,423	-7.2
Oct	93,818	79,617	-15.1	1,006,560	927,040	-7.9
Nov	86,661	82,293	-5.0	1,093,221	1,009,333	-7.7
Dec	94,712	90,451	-4.5	1,187,933	1,099,784	-7.4

See footnote(s) at end of table.

--continued

**Dairy Products: Production by Product and Month,  
United States, 2000-2001 <sup>1</sup> (continued)**

Product and Month	By Month			Cumulative		
	2000	2001	Change From 2000	2000	2001	Change From 2000
	<i>1,000 Pounds</i>	<i>1,000 Pounds</i>	<i>Percent</i>	<i>1,000 Pounds</i>	<i>1,000 Pounds</i>	<i>Percent</i>
Cream Cottage Cheese						
Jan	28,725	30,512	6.2	28,725	30,512	6.2
Feb	29,745	28,436	-4.4	58,470	58,948	0.8
Mar	32,544	32,540		91,014	91,488	0.5
Apr	29,881	29,829	-0.2	120,895	121,317	0.3
May	32,223	34,070	5.7	153,118	155,387	1.5
Jun	31,860	31,347	-1.6	184,978	186,734	0.9
Jul	31,365	32,594	3.9	216,343	219,328	1.4
Aug	34,156	33,463	-2.0	250,499	252,791	0.9
Sep	32,561	29,577	-9.2	283,060	282,368	-0.2
Oct	31,233	31,425	0.6	314,293	313,793	-0.2
Nov	30,106	29,890	-0.7	344,399	343,683	-0.2
Dec	27,652	27,936	1.0	372,051	371,619	-0.1
Lowfat Cottage Cheese						
Jan	28,017	29,707	6.0	28,017	29,707	6.0
Feb	29,918	28,562	-4.5	57,935	58,269	0.6
Mar	32,881	32,381	-1.5	90,816	90,650	-0.2
Apr	29,454	29,590	0.5	120,270	120,240	
May	32,600	34,185	4.9	152,870	154,425	1.0
Jun	31,439	30,401	-3.3	184,309	184,826	0.3
Jul	29,953	31,210	4.2	214,262	216,036	0.8
Aug	32,502	34,647	6.6	246,764	250,683	1.6
Sep	32,056	30,166	-5.9	278,820	280,849	0.7
Oct	30,790	31,169	1.2	309,610	312,018	0.8
Nov	28,512	28,249	-0.9	338,122	340,267	0.6
Dec	26,130	25,479	-2.5	364,252	365,746	0.4
	<i>1,000 Gallons</i>	<i>1,000 Gallons</i>	<i>Percent</i>	<i>1,000 Gallons</i>	<i>1,000 Gallons</i>	<i>Percent</i>
Ice Cream, Hard						
Jan	61,251	62,974	2.8	61,251	62,974	2.8
Feb	70,632	67,138	-4.9	131,883	130,112	-1.3
Mar	83,032	76,796	-7.5	214,915	206,908	-3.7
Apr	80,202	78,520	-2.1	295,117	285,428	-3.3
May	84,008	78,894	-6.1	379,125	364,322	-3.9
Jun	87,745	83,775	-4.5	466,870	448,097	-4.0
Jul	83,473	81,942	-1.8	550,343	530,039	-3.7
Aug	80,330	79,866	-0.6	630,673	609,905	-3.3
Sep	68,350	70,782	3.6	699,023	680,687	-2.6
Oct	70,671	67,573	-4.4	769,694	748,260	-2.8
Nov	57,223	60,565	5.8	826,917	808,825	-2.2
Dec	53,669	56,548	5.4	880,586	865,373	-1.7

See footnote(s) at end of table.

--continued



**Dairy Products: Production by Product and Month,  
United States, 2000-2001<sup>1</sup> (continued)**

Product and Month	By Month			Cumulative		
	2000	2001	Change From 2000	2000	2001	Change From 2000
	<i>1,000 Gallons</i>	<i>1,000 Gallons</i>	<i>Percent</i>	<i>1,000 Gallons</i>	<i>1,000 Gallons</i>	<i>Percent</i>
<b>Ice Cream, Lowfat</b>						
Jan	23,827	24,246	1.8	23,827	24,246	1.8
Feb	26,905	26,324	-2.2	50,732	50,570	-0.3
Mar	34,042	34,043		84,774	84,613	-0.2
Apr	33,495	36,353	8.5	118,269	120,966	2.3
May	38,717	40,901	5.6	156,986	161,867	3.1
Jun	41,918	42,676	1.8	198,904	204,543	2.8
Jul	39,420	40,913	3.8	238,324	245,456	3.0
Aug	37,577	40,164	6.9	275,901	285,620	3.5
Sep	30,793	31,541	2.4	306,694	317,161	3.4
Oct	29,467	29,516	0.2	336,161	346,677	3.1
Nov	23,689	25,226	6.5	359,850	371,903	3.3
Dec	22,235	24,227	9.0	382,085	396,130	3.7
<b>Ice Cream, NF, Hard</b>						
Jan	1,910	1,989	4.1	1,910	1,989	4.1
Feb	1,995	2,206	10.6	3,905	4,195	7.4
Mar	2,533	1,976	-22.0	6,438	6,171	-4.1
Apr	2,404	1,794	-25.4	8,842	7,965	-9.9
May	2,268	2,021	-10.9	11,110	9,986	-10.1
Jun	2,627	2,328	-11.4	13,737	12,314	-10.4
Jul	2,207	1,813	-17.9	15,944	14,127	-11.4
Aug	2,461	1,786	-27.4	18,405	15,913	-13.5
Sep	2,039	1,904	-6.6	20,444	17,817	-12.8
Oct	1,939	1,600	-17.5	22,383	19,417	-13.3
Nov	1,565	1,639	4.7	23,948	21,056	-12.1
Dec	1,678	1,398	-16.7	25,626	22,454	-12.4
<b>Sherbet, Hard</b>						
Jan	3,481	3,506	0.7	3,481	3,506	0.7
Feb	3,969	3,835	-3.4	7,450	7,341	-1.5
Mar	4,706	4,548	-3.4	12,156	11,889	-2.2
Apr	4,648	4,298	-7.5	16,804	16,187	-3.7
May	5,207	5,040	-3.2	22,011	21,227	-3.6
Jun	5,214	5,303	1.7	27,225	26,530	-2.6
Jul	4,582	5,095	11.2	31,807	31,625	-0.6
Aug	4,725	4,740	0.3	36,532	36,365	-0.5
Sep	3,619	3,909	8.0	40,151	40,274	0.3
Oct	3,346	3,650	9.1	43,497	43,924	1.0
Nov	3,003	3,146	4.8	46,500	47,070	1.2
Dec	3,039	3,166	4.2	49,539	50,236	1.4

See footnote(s) at end of table.

--continued

**Dairy Products: Production by Product and Month,  
United States, 2000-2001<sup>1</sup> (continued)**

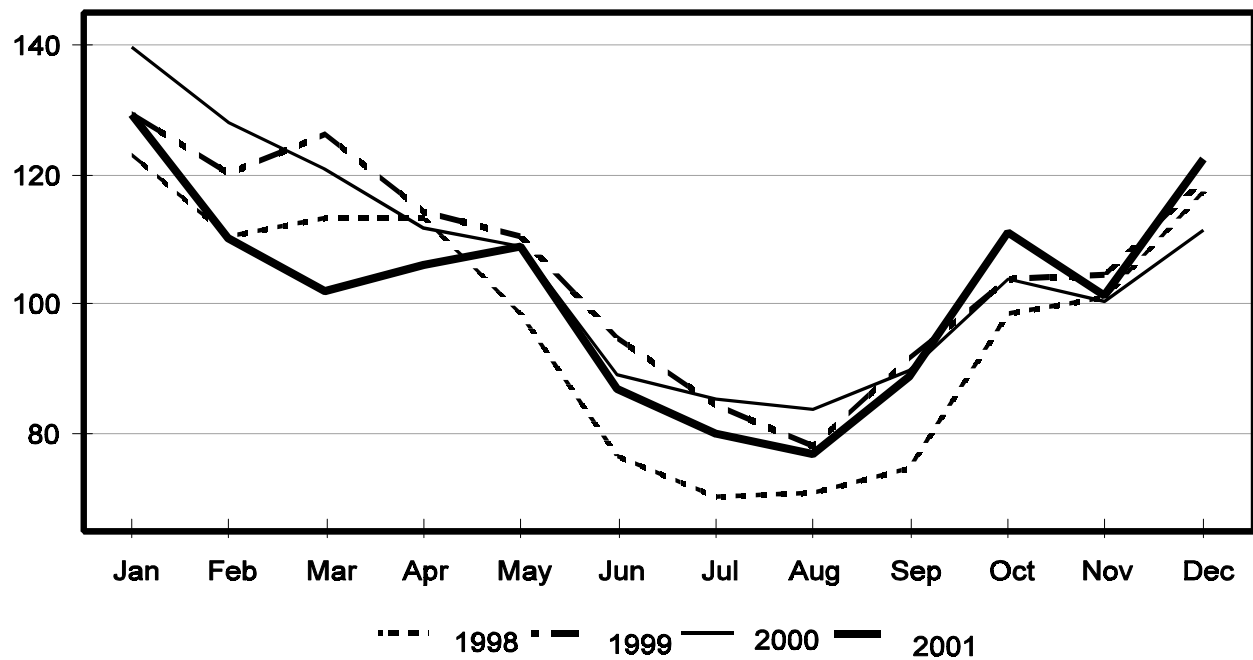
Product and Month	By Month			Cumulative		
	2000	2001	Change From 2000	2000	2001	Change From 2000
	<i>1,000 Gallons</i>	<i>1,000 Gallons</i>	<i>Percent</i>	<i>1,000 Gallons</i>	<i>1,000 Gallons</i>	<i>Percent</i>
Frozen Yogurt						
Jan	6,966	6,290	-9.7	6,966	6,290	-9.7
Feb	6,427	6,428		13,393	12,718	-5.0
Mar	8,088	7,880	-2.6	21,481	20,598	-4.1
Apr	7,426	7,398	-0.4	28,907	27,996	-3.2
May	8,854	8,060	-9.0	37,761	36,056	-4.5
Jun	8,262	8,024	-2.9	46,023	44,080	-4.2
Jul	7,965	8,196	2.9	53,988	52,276	-3.2
Aug	8,910	7,992	-10.3	62,898	60,268	-4.2
Sep	7,106	6,513	-8.3	70,004	66,781	-4.6
Oct	6,608	6,562	-0.7	76,612	73,343	-4.3
Nov	5,372	5,979	11.3	81,984	79,322	-3.2
Dec	5,273	5,467	3.7	87,257	84,789	-2.8

<sup>1</sup> November 2001 data revised.

<sup>2</sup> Excludes all modified dry whey products.

## Total Butter Production United States

Million Pounds



**Total Cheese, Excluding Cottage Cheese: Production by  
State and United States, December 2000-2001**

State	Dec 2000	Nov <sup>1</sup> 2001	Dec 2001	Change From	
				Dec 2000	Nov 2001
	<i>1,000 Pounds</i>	<i>1,000 Pounds</i>	<i>1,000 Pounds</i>	<i>Percent</i>	<i>Percent</i>
CA	133,252	139,501	141,260	6.0	1.3
ID	49,765	50,385	51,345	3.2	1.9
IL	8,465	8,725	8,532	0.8	-2.2
IA	21,061	22,396	20,673	-1.8	-7.7
MA	125	98	142	13.6	44.9
MN	59,828	47,149	51,919	-13.2	10.1
MO	8,925	10,294	7,873	-11.8	-23.5
NY	55,762	65,261	56,111	0.6	-14.0
ND	1,273	1,065	1,706	34.0	60.2
OH	10,944	12,310	13,345	21.9	8.4
PA	27,343	32,485	32,308	18.2	-0.5
SD	11,903	11,593	12,754	7.1	10.0
UT	6,192	4,678	4,579	-26.0	-2.1
WA		11,537	13,019		12.8
WI	180,948	173,799	179,539	-0.8	3.3
Oth Sts <sup>2</sup>	112,625	94,970	104,381	-7.3	9.9
US	688,411	686,246	699,486	1.6	1.9
N Atlantic	97,019	114,347	103,642	6.8	-9.4
S Atlantic	2,539	2,987	2,648	4.3	-11.3
E N Central	215,681	207,094	215,584	0.0	4.1
W N Central	111,260	99,923	102,516	-7.9	2.6
S Central	5,814	3,753	5,432	-6.6	44.7
West	256,098	258,142	269,664	5.3	4.5

<sup>1</sup> Revised.

<sup>2</sup> States not shown when fewer than 3 plants reported or individual plant operations could be disclosed. Percent change shown only when comparable States are included in the calculation.

**American Cheese: Production by State and United States, December 2000-2001**

State	Dec 2000	Nov <sup>1</sup> 2001	Dec 2001	Change From	
				Dec 2000	Nov 2001
	<i>1,000 Pounds</i>	<i>1,000 Pounds</i>	<i>1,000 Pounds</i>	<i>Percent</i>	<i>Percent</i>
CA	58,215	63,625	66,870	14.9	5.1
ID	41,359	38,057	40,606	-1.8	6.7
IA	11,333	10,210	10,881	-4.0	6.6
MN	56,469	45,056	49,789	-11.8	10.5
NY	6,825	6,624	8,705	27.5	31.4
ND	1,273	1,065	1,706	34.0	60.2
OH	2,171	2,674	3,470	59.8	29.8
OR	5,288	7,129	7,328	38.6	2.8
SD	6,076	6,187	6,415	5.6	3.7
UT	3,348	1,596	1,880	-43.8	17.8
WA		11,150	12,649		13.4
WI	69,987	67,600	72,000	2.9	6.5
Oth Sts <sup>2</sup>	41,074	25,688	30,491	-25.8	18.7
US	303,418	286,661	312,790	3.1	9.1
Atlantic	11,952	12,344	14,388	20.4	16.6
E N Central	73,517	71,631	76,821	4.5	7.2
W N Central	75,160	62,519	68,791	-8.5	10.0
S Central	5,490	3,261	5,108	-7.0	56.6
West	137,299	136,906	147,682	7.6	7.9

<sup>1</sup> Revised.

<sup>2</sup> States not shown when fewer than 3 plants reported or individual plant operations could be disclosed. Percent change shown only when comparable States are included in the calculation.

**Cheddar Cheese: Production by State and United States, December 2000-2001**

State	Dec 2000	Nov <sup>1</sup> 2001	Dec 2001	Change From	
				Dec 2000	Nov 2001
	<i>1,000 Pounds</i>	<i>1,000 Pounds</i>	<i>1,000 Pounds</i>	<i>Percent</i>	<i>Percent</i>
CA	44,833	45,811	48,720	8.7	6.4
ID	20,096	18,293	19,750	-1.7	8.0
MN	52,753	42,081	46,307	-12.2	10.0
NY	6,721	6,557	8,653	28.7	32.0
WI	55,831	53,900	58,000	3.9	7.6
Oth Sts <sup>2</sup>	57,078	52,545	60,041	5.2	14.3
US	237,312	219,187	241,471	1.8	10.2
Atlantic	11,468	11,832	13,816	20.5	16.8
E N Cen	57,423	55,938	60,818	5.9	8.7
W N Cen	63,619	52,862	56,982	-10.4	7.8
S Cen	5,480	3,251	5,098	-7.0	56.8
West	99,322	95,304	104,757	5.5	9.9

<sup>1</sup> Revised.

<sup>2</sup> States not shown when fewer than 3 plants reported or individual plant operations could be disclosed. Percent change shown only when comparable States are included in the calculation.

**Mozzarella Cheese: Production by State and United States, December 2000-2001**

State	Dec 2000	Nov <sup>1</sup> 2001	Dec 2001	Change From	
				Dec 2000	Nov 2001
	<i>1,000 Pounds</i>	<i>1,000 Pounds</i>	<i>1,000 Pounds</i>	<i>Percent</i>	<i>Percent</i>
CA	59,350	55,683	55,802	-6.0	0.2
NY	20,425	17,975	18,842	-7.8	4.8
SD	5,207	4,725	5,183	-0.5	9.7
WI	59,323	58,800	62,600	5.5	6.5
Oth Sts <sup>2</sup>	81,628	81,954	88,422	8.3	7.9
US	225,933	219,137	230,849	2.2	5.3
Atlantic	41,368	42,039	44,468	7.5	5.8
E N Central	73,458	69,769	75,455	2.7	8.1
W N Central	17,139				
West	93,968	91,340	94,793	0.9	3.8

<sup>1</sup> Revised.

<sup>2</sup> States not shown when fewer than 3 plants reported or individual plant operations could be disclosed. Percent change shown only when comparable States are included in the calculation.

**Butter: Production by State and United States, December 2000-2001**

State	Dec 2000	Nov <sup>1</sup> 2001	Dec 2001	Change From	
				Dec 2000	Nov 2001
	<i>1,000 Pounds</i>	<i>1,000 Pounds</i>	<i>1,000 Pounds</i>	<i>Percent</i>	<i>Percent</i>
CA	30,516	29,106	35,812	17.4	23.0
MN	4,515				
NY	1,626	1,708	1,659	2.0	-2.9
ND	317				
PA	6,710	5,371	7,015	4.5	30.6
WA		7,969	7,884		-1.1
WI	27,711	28,439	33,225	19.9	16.8
Oth Sts <sup>2</sup>	40,185	28,706	37,042	-7.8	29.0
US	111,580	101,299	122,637	9.9	21.1
N Atlantic	12,246	9,649	12,665	3.4	31.3
E N Central	32,311	31,801	38,403	18.9	20.8
W N Central	11,111	7,532	10,966	-1.3	45.6
West	46,187	41,934	48,737	5.5	16.2

<sup>1</sup> Revised.

<sup>2</sup> States not shown when fewer than 3 plants reported or individual plant operations could be disclosed. Percent change shown only when comparable States are included in the calculation.

**Nonfat Dry Milk, Human: Production by State  
and United States, December 2000-2001**

State	Dec 2000	Nov <sup>1</sup> 2001	Dec 2001	Change From	
				Dec 2000	Nov 2001
	<i>1,000 Pounds</i>	<i>1,000 Pounds</i>	<i>1,000 Pounds</i>	<i>Percent</i>	<i>Percent</i>
CA	58,800	57,298	63,574	8.1	11.0
MN & WI	1,123				
NM	3,592				
WA		28,163	29,766		5.7
Oth Sts <sup>2</sup>	57,856	35,810	50,969	-11.9	42.3
US	121,371	121,271	144,309	18.9	19.0
Atlantic	11,772	8,884	15,199	29.1	71.1
E N Central	3,792	2,314	5,317	40.2	129.8
W N Central	7,953	5,481	6,732	-15.4	22.8
S Central	4,803				
West	93,051	101,798	111,309	19.6	9.3

<sup>1</sup> Revised.

<sup>2</sup> States not shown when fewer than 3 plants reported or individual plant operations could be disclosed. Percent change shown only when comparable States are included in the calculation.

**Dry Whey, Human: Production by State  
and United States, December 2000-2001**

State	Dec 2000	Nov <sup>1</sup> 2001	Dec 2001	Change From	
				Dec 2000	Nov 2001
	<i>1,000 Pounds</i>	<i>1,000 Pounds</i>	<i>1,000 Pounds</i>	<i>Percent</i>	<i>Percent</i>
CA	11,996	11,433	11,522	-4.0	0.8
MN	6,622	5,320	6,142	-7.2	15.5
NY	8,561	9,382	9,847	15.0	5.0
PA	7,265	7,830	8,001	10.1	2.2
WA		7,355	7,423		0.9
WI	23,001	21,835	26,700	16.1	22.3
Oth Sts <sup>2</sup>	30,966	14,419	15,491	-50.0	7.4
US	88,411	77,574	85,126	-3.7	9.7
Atlantic	15,826	17,212	17,848	12.8	3.7
Central	40,625	38,060	44,484	9.5	16.9
West	31,960	22,302	22,794	-28.7	2.2

<sup>1</sup> Revised.

<sup>2</sup> States not shown when fewer than 3 plants reported or individual plant operations could be disclosed. Percent change shown only when comparable States are included in the calculation.

**Ice Cream, Hard: Production by State and United States, December 2000-2001**

State	Dec 2000	Nov <sup>1</sup> 2001	Dec 2001	Change From	
				Dec 2000	Nov 2001
	<i>1,000 Gallons</i>	<i>1,000 Gallons</i>	<i>1,000 Gallons</i>	<i>Percent</i>	<i>Percent</i>
CA	6,222	8,119	7,694	23.7	-5.2
FL	1,888	1,850	1,400	-25.8	-24.3
IL	2,051	2,074	2,282	11.3	10.0
IN	5,859	6,871	6,417	9.5	-6.6
MD	1,052	1,126	990	-5.9	-12.1
MA	4,058	4,223	4,345	7.1	2.9
MI	1,219	1,580	1,294	6.2	-18.1
MN	2,963	3,770	1,857	-37.3	-50.7
NH	6	7	6		-14.3
NM	219	219	219		
NY	2,156	1,600	1,700	-21.2	6.3
NC	812	994	984	21.2	-1.0
ND	85				
OH	2,509	2,224	2,561	2.1	15.2
OR	597	750	750	25.6	
PA	2,598	3,148	3,044	17.2	-3.3
SD	2	1	3	50.0	200.0
TN	1,186	1,352	1,257	6.0	-7.0
TX	3,187	3,927	3,771	18.3	-4.0
UT	895	1,381	1,059	18.3	-23.3
WA	1,003	1,283	982	-2.1	-23.5
Oth Sts <sup>2</sup>	13,102	14,066	13,933	6.3	-0.9
US	53,669	60,565	56,548	5.4	-6.6
N Atlantic	10,423	11,146	10,866	4.3	-2.5
S Atlantic	4,901	4,787	4,060	-17.2	-15.2
E N Central	12,196	13,457	13,140	7.7	-2.4
W N Central	8,073	9,574	8,145	0.9	-14.9
S Central	7,143	7,758	7,488	4.8	-3.5
West	10,933	13,843	12,849	17.5	-7.2

<sup>1</sup> Revised.

<sup>2</sup> States not shown when fewer than 3 plants reported or individual plant operations could be disclosed. Percent change shown only when comparable States are included in the calculation.

**Canned Milk and Dry Milk Products: Manufacturers' Shipments,  
Stocks, and Selling Prices, December, 2000-2001**

Product	Dec 2000	Nov 2001 <sup>1</sup>	Dec 2001	Change From	
				Dec 2000	Nov 2001
	<b>Manufacturers' Shipments <sup>2</sup></b>				
	<i>1,000 Pounds</i>	<i>1,000 Pounds</i>	<i>1,000 Pounds</i>	<i>Percent</i>	<i>Percent</i>
Nonfat Dry Milk, Human	129,880	140,429	118,401	-8.8	-15.7
	<b>Manufacturers' Stocks End-of-Month <sup>3</sup></b>				
	<i>1,000 Pounds</i>	<i>1,000 Pounds</i>	<i>1,000 Pounds</i>	<i>Percent</i>	<i>Percent</i>
Canned Evaporated and Condensed Whole Milk	40,746	48,278	41,681	2.3	-13.7
Nonfat Dry Milk, Human	146,348	112,662	121,436	-17.0	7.8
Dry Buttermilk, Total	5,812	4,084	6,043	4.0	48.0

<sup>1</sup> Revised.

<sup>2</sup> For dry products, shipments of bulk goods only.

<sup>3</sup> Stocks held by manufacturers at all points and in transit.



**Procedures and Reliability:** Estimates included in this report are based on data provided each month by manufacturers of these products. In 32 States, the State Departments of Agriculture assist in collection of data, which eliminates duplicate reporting and reduces respondent burden. Data are collected by mail, personal and telephone interviews following the close of each month. There were 1,124 manufacturers that made one or more products in 2000. Each month, reports are generally received from all dairy plants in States with small numbers of plants. In States with large numbers of plants, survey procedures are designed to obtain monthly reports from all large plants and from a sample of small plants. Monthly estimates are based upon returns from about 70 percent of the plants which account for 70 to 90 percent of the total production of major dairy products.

**Revision Policy:** Monthly estimates are subject to revision the month following the preliminary estimates. Annual estimates are published in the "**Dairy Products**" report published each April which includes any revisions made to current and previous year. In preparing the annual report, an attempt is made to get information from all plants.

The next "Dairy Products" report will be released at 3 p.m. ET on March 4, 2002.

The United States Department of Agriculture (USDA) prohibits discrimination in all its programs on the basis of race, color, national origin, gender, religion, age, disability, political beliefs, sexual orientation, and marital or family status. (Not all prohibited bases apply to all programs.) Persons with disabilities who require alternative means for communication of program information (braille, large print, audiotape, etc.) should contact the USDA's TARGET Center at 202-720-2600 (voice and TDD).

To file a complaint of discrimination, write USDA, Director, Office of Civil Rights, Room 326-W, Whitten Building, 1400 Independence Avenue, SW, Washington, D.C., 20250-9410, or call 202-720-5964 (voice or TDD). USDA is an equal opportunity provider and employer.

## **ACCESS TO REPORTS!!**

---

For your convenience, there are several ways to obtain NASS reports, data products, and services:

### **INTERNET ACCESS**

All NASS reports are available free of charge on the worldwide Internet. For access, connect to the Internet and go to the NASS Home Page at: <http://www.usda.gov/nass/>. Select "Today's Reports" or Publications and then Reports by Calendar or Publications and then Search, by Title or Subject.

### **E-MAIL SUBSCRIPTION**

There are two options for subscribing via e-mail. All NASS reports are available by subscription free of charge direct to your e-mail address. 1) Starting with the NASS Home Page at <http://www.usda.gov/nass/>, click on **Publications**, then click on the **Subscribe by E-mail** button which takes you to the page describing e-mail delivery of reports. Finally, click on **Go to the Subscription Page** and follow the instructions. 2) If you do NOT have Internet access, send an e-mail message to: [usda-reports@usda.mannlib.cornell.edu](mailto:usda-reports@usda.mannlib.cornell.edu). In the body of the message type the word: **list**.

### **AUTOFAX ACCESS**

NASSFax service is available for some reports from your fax machine. Please call 202-720-2000, using the handset attached to your fax. Respond to the voice prompts. Document 0411 is a list of available reports.

-----

### **PRINTED REPORTS OR DATA PRODUCTS**

**CALL OUR TOLL-FREE ORDER DESK: 800-999-6779 (U.S. and Canada)**  
**Other areas, please call 703-605-6220      FAX: 703-605-6900**  
**(Visa, MasterCard, check, or money order acceptable for payment.)**

-----

### **ASSISTANCE**

For **assistance** with general agricultural statistics or further information about NASS or its products or services, contact the **Agricultural Statistics Hotline** at **800-727-9540**, 7:30 a.m. to 4:00 p.m. ET, or e-mail: [nass@nass.usda.gov](mailto:nass@nass.usda.gov).

---