

Released April 5, 2002, by the National Agricultural Statistics Service (NASS), Agricultural Statistics Board, U.S. Department of Agriculture. For information on "Dairy Products" call Kevin Pautler at (202) 720-9168, office hours 7:15 a.m. to 4:00 p.m. ET.

February 2002 Highlights

Total cheese output (excluding cottage cheese) was 644 million pounds, 1.9 percent above February 2001 but 7.6 percent below January 2002

American type cheese production totaled 289 million pounds, 5.1 percent above February 2001 but 8.4 percent below January 2002.

Butter production was 125 million pounds in February, 13.9 percent above February 2001 but 10.8 percent below January 2002.

Frozen dessert: (comparisons with February 2001)

Ice cream, Regular (hard) --- 71.0 million gallons, up 5.7 percent.

Ice cream, Lowfat (total) --- 24.4 million gallons, down 7.4 percent.

Ice cream, Nonfat (hard) --- 1.73 million gallons, down 21.8 percent.

Sherbet (hard) --- 4.03 million gallons, up 5.2 percent.

Frozen Yogurt (total) --- 6.36 million gallons, down 1.0 percent.

Nonfat dry milk for human food: (compared with February 2001) --- 125 million pounds, down 5.5 percent.

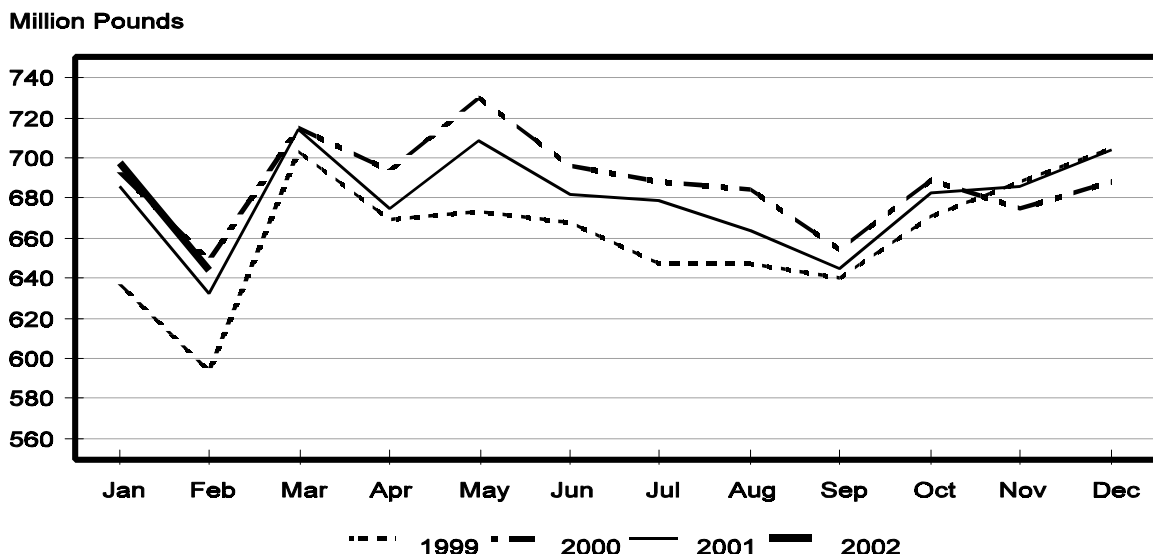
Dry whey products: (comparisons with February 2001)

Dry whey, human --- 79.4 million pounds, down 6.5 percent.

Dry whey, animal --- 5.73 million pounds, up 7.8 percent.

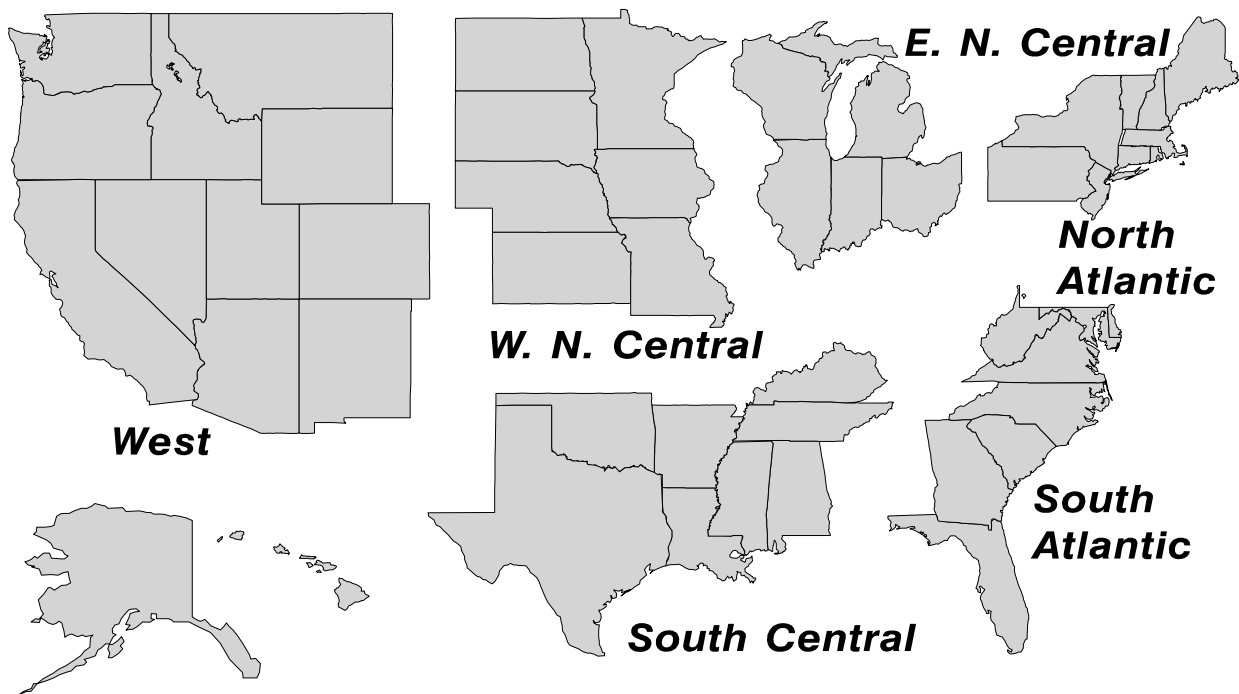
Dry whey, total --- 85.1 million pounds, down 5.7 percent.

Total Cheese Production United States



U. S. Geographic Regions Dairy Products

State totals are not published when fewer than 3 firms have reported or one firm comprises more than 60 percent of the State total. If we are not able to publish a region for confidentiality reasons, it will be combined with other regions when possible. For example, if North Atlantic can not be published, then it will be combined with South Atlantic to publish Atlantic. The West North Central and East North Central will be combined, if necessary, to form North Central. In the event that neither could be published, they may be combined with South Central to publish Central. Some tables will have only limited regions shown, therefore the regions may not add to the United States total.



**Dairy Products: Production by Product,
United States, February, 2001-2002**

Product	Feb 2001	Jan 2002 ¹	Feb 2002	Change From	
				Feb 2001	Jan 2002
	<i>1,000 Pounds</i>	<i>1,000 Pounds</i>	<i>1,000 Pounds</i>	<i>Percent</i>	<i>Percent</i>
Butter	110,175	140,687	125,467	13.9	-10.8
Cheese					
American Types ²	274,753	315,166	288,642	5.1	-8.4
Cheddar	214,947	246,156	225,823	5.1	-8.3
Swiss	18,184	20,442	19,007	4.5	-7.0
Brick and Muenster	7,135	8,231	6,313	-11.5	-23.3
Cream and Neufchatel	42,759	44,777	44,126	3.2	-1.5
Hispanic	7,275	10,102	8,837	21.5	-12.5
Mozzarella	214,093	224,114	209,302	-2.2	-6.6
Other Italian Types	53,553	58,377	52,582	-1.8	-9.9
Total Italian Types	267,646	282,491	261,884	-2.2	-7.3
All Other Types	14,407	16,351	15,664	8.7	-4.2
Total	632,159	697,560	644,473	1.9	-7.6
Cottage Cheese, Curd ³	34,446	35,330	34,680	0.7	-1.8
Cottage Cheese, Cream ⁴	28,436	29,765	28,754	1.1	-3.4
Cottage Cheese, Lowfat ⁵	28,562	29,609	29,380	2.9	-0.8
Canned Evaporated and					
Condensed Whole Milk	29,768	31,524	31,230	4.9	-0.9
Dry Whole Milk	4,515	3,845	4,204	-6.9	9.3
Nonfat Dry Milk, Human	132,415	118,892	125,159	-5.5	5.3
Dry Skim Milk, Animal	275	685	841	205.8	22.8
Dry Buttermilk	5,304	5,561	5,073	-4.4	-8.8
Yogurt, Plain & Flavored	155,126	153,156	150,029	-3.3	-2.0
	<i>1,000 Gallons</i>	<i>1,000 Gallons</i>	<i>1,000 Gallons</i>	<i>Percent</i>	<i>Percent</i>
Frozen Products					
Ice Cream, Hard	67,138	70,004	70,961	5.7	1.4
Ice Cream, Lowfat, Hard	6,533	8,085	6,611	1.2	-18.2
Ice Cream, Lowfat, Soft	19,791	14,034	17,766	-10.2	26.6
Ice Cream, Lowfat, Total	26,324	22,119	24,377	-7.4	10.2
Ice Cream, Nonfat, Hard	2,206	2,074	1,726	-21.8	-16.8
Sherbet, Hard	3,835	3,796	4,034	5.2	6.3
Water and Juice Ices	5,174	4,327	5,126	-0.9	18.5
Frozen Yogurt, Total	6,428	5,976	6,361	-1.0	6.4
Regular & Lowfat, Hard	1,787	1,791	2,012	12.6	12.3
Nonfat, Hard	765	990	1,020	33.3	3.0
Other Frozen Dairy					
Products	998	710	794	-20.4	11.8
Mix for Frozen Products					
Ice Cream Mix	37,457	38,007	38,348	2.4	0.9
Ice Cream, Lowfat, Mix	14,620	12,184	13,517	-7.5	10.9
Ice Cream, Nonfat, Mix	1,499	1,225	1,105	-26.3	-9.8
Sherbet Mix	2,699	2,735	2,817	4.4	3.0
Yogurt Mix	3,781	3,515	3,742	-1.0	6.5

¹ Revised.

² Includes Cheddar, Colby, Monterey, and Jack.

³ Mostly used for processing into cream or lowfat cottage cheese.

⁴ Fat content 4 percent or more.

⁵ Fat content less than 4 percent.

**Whey and Modified Whey Products: Production, Stocks,
and Prices, United States, February, 2001-2002**

Product	Feb 2001	Jan 2002 ¹	Feb 2002	Change From	
				Feb 2001	Jan 2002
Production					
	<i>1,000 Pounds</i>	<i>1,000 Pounds</i>	<i>1,000 Pounds</i>	<i>Percent</i>	<i>Percent</i>
Condensed Whey, Solids Content ²					
Sweet-Type, Human	9,157	6,681	5,364	-41.4	-19.7
Sweet-Type, Animal	1,210	1,269	980	-19.0	-22.8
Dry Whey Products					
Dry Whey, Human	84,953	84,573	79,392	-6.5	-6.1
Dry Whey, Animal	5,318	5,632	5,732	7.8	1.8
Dry Whey, Total	90,271	90,205	85,124	-5.7	-5.6
Reduced Lactose and Minerals					
Human Food	6,599	8,559	7,666	16.2	-10.4
Animal Feed	3,062	3,685	3,483	13.7	-5.5
Lactose, Human and Animal	42,410	48,837	44,417	4.7	-9.1
Whey					
Solids in Wet Blends, Animal	3,590	2,989	3,690	2.8	23.5
Protein Concentrate, Human	22,339	24,137	24,448	9.4	1.3
Protein Concentrate, Animal	3,907	3,878	3,225	-17.5	-16.8
Manufacturers' Stocks End-of-Month ³					
	<i>1,000 Pounds</i>	<i>1,000 Pounds</i>	<i>1,000 Pounds</i>	<i>Percent</i>	<i>Percent</i>
Dry Whey Products					
Dry Whey, Human	35,070	35,727	33,944	-3.2	-5.0
Dry Whey, Animal	5,650	2,129	1,759	-68.9	-17.4
Reduced Lactose and Minerals					
Human and Animal ⁴	6,256	8,201	8,078	29.1	-1.5
Lactose, Human and Animal	27,480	28,483	27,400	-0.3	-3.8
Whey Protein Concentrate, Human	8,959	19,367	19,980	123.0	3.2
Whey Protein Concentrate, Animal	1,652	1,863	1,652	0.0	-11.3
Manufacturers' Selling Price ⁵					
	<i>Cents per Pound</i>	<i>Cents per Pound</i>	<i>Cents per Pound</i>	<i>Cents Change</i>	<i>Cents Change</i>
Dry Whey, Animal	24.3	25.4	20.6	-3.7	-4.8

¹ Revised.

² Final marketable product only. Does not include quantity used or shipped to another plant for further processing into dry whey or modified whey products.

³ Stocks held by manufacturers at all points and in transit.

⁴ Reduced lactose and minerals stocks combined to avoid disclosure of individual operations.

⁵ Prices for bulk goods, f.o.b. plant. Average monthly prices reported by firms.

**Dairy Products: Production by Product and Month,
United States, 2001-2002 ¹**

Product and Month	By Month			Cumulative		
	2001	2002	Change From 2001	2001	2002	Change From 2001
	<i>1,000 Pounds</i>	<i>1,000 Pounds</i>	<i>Percent</i>	<i>1,000 Pounds</i>	<i>1,000 Pounds</i>	<i>Percent</i>
Total Cheese						
Jan	686,591	697,560	1.6	686,591	697,560	1.6
Feb	632,159	644,473	1.9	1,318,750	1,342,033	1.8
Mar	714,057			2,032,807		
Apr	675,080			2,707,887		
May	708,832			3,416,719		
Jun	682,337			4,099,056		
Jul	679,109			4,778,165		
Aug	663,390			5,441,555		
Sep	644,525			6,086,080		
Oct	682,957			6,769,037		
Nov	686,246			7,455,283		
Dec	704,276			8,159,559		
American Cheese						
Jan	301,114	315,166	4.7	301,114	315,166	4.7
Feb	274,753	288,642	5.1	575,867	603,808	4.9
Mar	299,478			875,345		
Apr	294,336			1,169,681		
May	309,835			1,479,516		
Jun	308,076			1,787,592		
Jul	298,394			2,085,986		
Aug	285,861			2,371,847		
Sep	282,494			2,654,341		
Oct	296,405			2,950,746		
Nov	286,661			3,237,407		
Dec	314,379			3,551,786		
Cheddar Cheese						
Jan	234,871	246,156	4.8	234,871	246,156	4.8
Feb	214,947	225,823	5.1	449,818	471,979	4.9
Mar	234,876			684,694		
Apr	230,856			915,550		
May	244,540			1,160,090		
Jun	242,771			1,402,861		
Jul	236,466			1,639,327		
Aug	220,619			1,859,946		
Sep	221,554			2,081,500		
Oct	230,652			2,312,152		
Nov	219,187			2,531,339		
Dec	242,554			2,773,893		

See footnote(s) at end of table.

--continued

**Dairy Products: Production by Product and Month,
United States, 2001-2002 ¹ (continued)**

Product and Month	By Month			Cumulative		
	2001	2002	Change From 2001	2001	2002	Change From 2001
	<i>1,000 Pounds</i>	<i>1,000 Pounds</i>	<i>Percent</i>	<i>1,000 Pounds</i>	<i>1,000 Pounds</i>	<i>Percent</i>
Italian Cheese						
Jan	289,173	282,491	-2.3	289,173	282,491	-2.3
Feb	267,646	261,884	-2.2	556,819	544,375	-2.2
Mar	298,886			855,705		
Apr	272,945			1,128,650		
May	284,652			1,413,302		
Jun	270,331			1,683,633		
Jul	275,257			1,958,890		
Aug	266,279			2,225,169		
Sep	260,223			2,485,392		
Oct	266,728			2,752,120		
Nov	277,884			3,030,004		
Dec	289,351			3,319,355		
Mozzarella Cheese						
Jan	231,533	224,114	-3.2	231,533	224,114	-3.2
Feb	214,093	209,302	-2.2	445,626	433,416	-2.7
Mar	237,066			682,692		
Apr	215,485			898,177		
May	229,997			1,128,174		
Jun	223,172			1,351,346		
Jul	224,814			1,576,160		
Aug	211,037			1,787,197		
Sep	211,007			1,998,204		
Oct	216,040			2,214,244		
Nov	219,137			2,433,381		
Dec	230,656			2,664,037		
Other Italian						
Jan	57,640	58,377	1.3	57,640	58,377	1.3
Feb	53,553	52,582	-1.8	111,193	110,959	-0.2
Mar	61,820			173,013		
Apr	57,460			230,473		
May	54,655			285,128		
Jun	47,159			332,287		
Jul	50,443			382,730		
Aug	55,242			437,972		
Sep	49,216			487,188		
Oct	50,688			537,876		
Nov	58,747			596,623		
Dec	58,695			655,318		

See footnote(s) at end of table.

--continued

**Dairy Products: Production by Product and Month,
United States, 2001-2002 ¹ (continued)**

Product and Month	By Month			Cumulative		
	2001	2002	Change From 2001	2001	2002	Change From 2001
	<i>1,000 Pounds</i>	<i>1,000 Pounds</i>	<i>Percent</i>	<i>1,000 Pounds</i>	<i>1,000 Pounds</i>	<i>Percent</i>
Butter						
Jan	129,366	140,687	8.8	129,366	140,687	8.8
Feb	110,175	125,467	13.9	239,541	266,154	11.1
Mar	101,907			341,448		
Apr	105,964			447,412		
May	109,074			556,486		
Jun	86,945			643,431		
Jul	79,888			723,319		
Aug	76,813			800,132		
Sep	88,748			888,880		
Oct	111,047			999,927		
Nov	101,299			1,101,226		
Dec	123,393			1,224,619		
Nonfat Dry Milk, Human						
Jan	116,667	118,892	1.9	116,667	118,892	1.9
Feb	132,415	125,159	-5.5	249,082	244,051	-2.0
Mar	121,009			370,091		
Apr	131,314			501,405		
May	139,903			641,308		
Jun	131,341			772,649		
Jul	117,158			889,807		
Aug	95,718			985,525		
Sep	94,829			1,080,354		
Oct	102,786			1,183,140		
Nov	121,271			1,304,411		
Dec	130,173			1,434,584		
Total Dry Whey ²						
Jan	95,366	90,205	-5.4	95,366	90,205	-5.4
Feb	90,271	85,124	-5.7	185,637	175,329	-5.6
Mar	99,397			285,034		
Apr	96,592			381,626		
May	101,494			483,120		
Jun	98,666			581,786		
Jul	99,036			680,822		
Aug	90,242			771,064		
Sep	76,359			847,423		
Oct	79,617			927,040		
Nov	82,293			1,009,333		
Dec	91,005			1,100,338		

See footnote(s) at end of table.

--continued

**Dairy Products: Production by Product and Month,
United States, 2001-2002 ¹ (continued)**

Product and Month	By Month			Cumulative		
	2001	2002	Change From 2001	2001	2002	Change From 2001
	<i>1,000 Pounds</i>	<i>1,000 Pounds</i>	<i>Percent</i>	<i>1,000 Pounds</i>	<i>1,000 Pounds</i>	<i>Percent</i>
Cream Cottage Cheese						
Jan	30,512	29,765	-2.4	30,512	29,765	-2.4
Feb	28,436	28,754	1.1	58,948	58,519	-0.7
Mar	32,540			91,488		
Apr	29,829			121,317		
May	34,070			155,387		
Jun	31,347			186,734		
Jul	32,594			219,328		
Aug	33,463			252,791		
Sep	29,577			282,368		
Oct	31,425			313,793		
Nov	29,890			343,683		
Dec	27,575			371,258		
Lowfat Cottage Cheese						
Jan	29,707	29,609	-0.3	29,707	29,609	-0.3
Feb	28,562	29,380	2.9	58,269	58,989	1.2
Mar	32,381			90,650		
Apr	29,590			120,240		
May	34,185			154,425		
Jun	30,401			184,826		
Jul	31,210			216,036		
Aug	34,647			250,683		
Sep	30,166			280,849		
Oct	31,169			312,018		
Nov	28,249			340,267		
Dec	26,324			366,591		
	<i>1,000 Gallons</i>	<i>1,000 Gallons</i>	<i>Percent</i>	<i>1,000 Gallons</i>	<i>1,000 Gallons</i>	<i>Percent</i>
Ice Cream, Hard						
Jan	62,974	70,004	11.2	62,974	70,004	11.2
Feb	67,138	70,961	5.7	130,112	140,965	8.3
Mar	76,796			206,908		
Apr	78,520			285,428		
May	78,894			364,322		
Jun	83,775			448,097		
Jul	81,942			530,039		
Aug	79,866			609,905		
Sep	70,782			680,687		
Oct	67,573			748,260		
Nov	60,565			808,825		
Dec	56,593			865,418		

See footnote(s) at end of table.

--continued

**Dairy Products: Production by Product and Month,
United States, 2001-2002 ¹ (continued)**

Product and Month	By Month			Cumulative		
	2001	2002	Change From 2001	2001	2002	Change From 2001
	<i>1,000 Gallons</i>	<i>1,000 Gallons</i>	<i>Percent</i>	<i>1,000 Gallons</i>	<i>1,000 Gallons</i>	<i>Percent</i>
Ice Cream, Lowfat						
Jan	24,246	22,119	-8.8	24,246	22,119	-8.8
Feb	26,324	24,377	-7.4	50,570	46,496	-8.1
Mar	34,043			84,613		
Apr	36,353			120,966		
May	40,901			161,867		
Jun	42,676			204,543		
Jul	40,913			245,456		
Aug	40,164			285,620		
Sep	31,541			317,161		
Oct	29,516			346,677		
Nov	25,226			371,903		
Dec	24,305			396,208		
Ice Cream, NF, Hard						
Jan	1,989	2,074	4.3	1,989	2,074	4.3
Feb	2,206	1,726	-21.8	4,195	3,800	-9.4
Mar	1,976			6,171		
Apr	1,794			7,965		
May	2,021			9,986		
Jun	2,328			12,314		
Jul	1,813			14,127		
Aug	1,786			15,913		
Sep	1,904			17,817		
Oct	1,600			19,417		
Nov	1,639			21,056		
Dec	1,397			22,453		
Sherbet, Hard						
Jan	3,506	3,796	8.3	3,506	3,796	8.3
Feb	3,835	4,034	5.2	7,341	7,830	6.7
Mar	4,548			11,889		
Apr	4,298			16,187		
May	5,040			21,227		
Jun	5,303			26,530		
Jul	5,095			31,625		
Aug	4,740			36,365		
Sep	3,909			40,274		
Oct	3,650			43,924		
Nov	3,146			47,070		
Dec	3,163			50,233		

See footnote(s) at end of table.

--continued

**Dairy Products: Production by Product and Month,
United States, 2001-2002¹ (continued)**

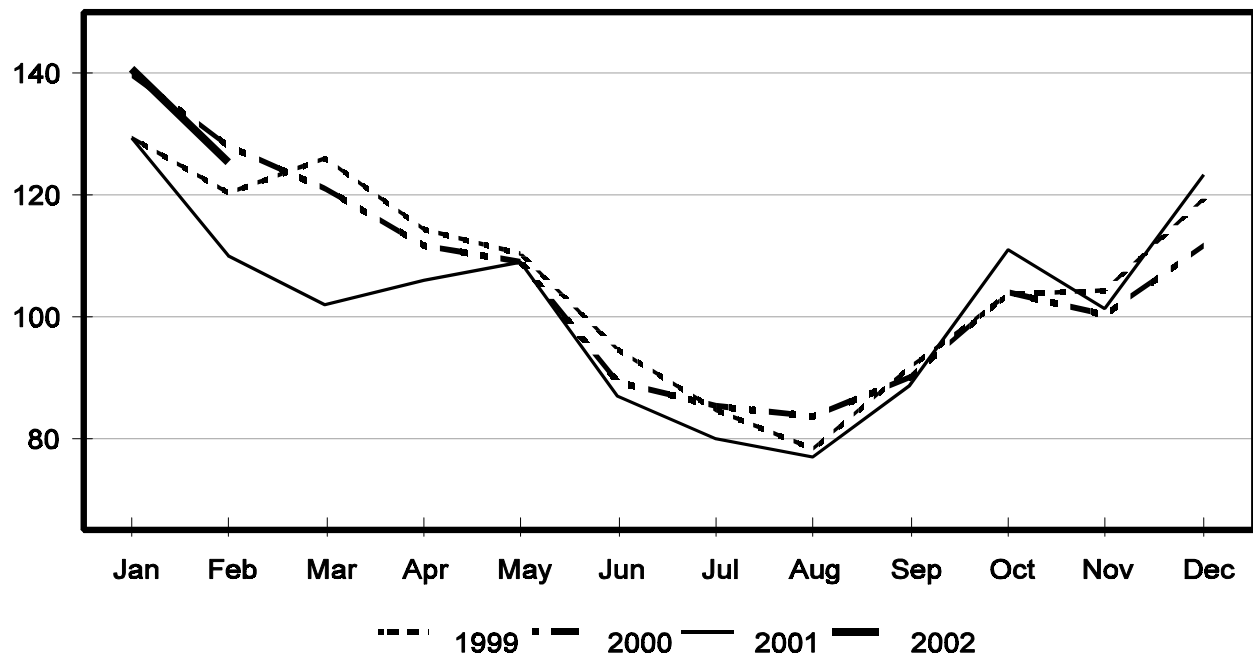
Product and Month	By Month			Cumulative		
	2001	2002	Change From 2001	2001	2002	Change From 2001
	<i>1,000 Gallons</i>	<i>1,000 Gallons</i>	<i>Percent</i>	<i>1,000 Gallons</i>	<i>1,000 Gallons</i>	<i>Percent</i>
Frozen Yogurt						
Jan	6,290	5,976	-5.0	6,290	5,976	-5.0
Feb	6,428	6,361	-1.0	12,718	12,337	-3.0
Mar	7,880			20,598		
Apr	7,398			27,996		
May	8,060			36,056		
Jun	8,024			44,080		
Jul	8,196			52,276		
Aug	7,992			60,268		
Sep	6,513			66,781		
Oct	6,562			73,343		
Nov	5,979			79,322		
Dec	5,447			84,769		

¹ January 2002 data revised.

² Excludes all modified dry whey products.

Total Butter Production United States

Million Pounds



**Total Cheese, Excluding Cottage Cheese: Production by
State and United States, February 2001-2002**

State	Feb 2001	Jan ¹ 2002	Feb 2002	Change From	
				Feb 2001	Jan 2002
	<i>1,000 Pounds</i>	<i>1,000 Pounds</i>	<i>1,000 Pounds</i>	<i>Percent</i>	<i>Percent</i>
CA	124,154	142,036	131,265	5.7	-7.6
ID	43,934	48,123	48,370	10.1	0.5
IL	7,483	8,180	7,076	-5.4	-13.5
IA	21,343	22,478	21,311	-0.1	-5.2
MA	81	82	85	4.9	3.7
MN	52,098	53,564	48,184	-7.5	-10.0
MO	5,894	7,617	7,480	26.9	-1.8
NY	54,281	59,016	55,648	2.5	-5.7
ND	1,189	1,630	1,833	54.2	12.5
OH	11,659	14,004	12,376	6.1	-11.6
PA	27,027	30,867	29,125	7.8	-5.6
SD	10,262	13,316	12,235	19.2	-8.1
UT	4,512	4,665	4,809	6.6	3.1
WA		12,538	11,784		-6.0
WI	165,431	179,957	163,384	-1.2	-9.2
Oth Sts ²	102,811	99,487	89,508	-12.9	-10.0
US	632,159	697,560	644,473	1.9	-7.6
N Atlantic	95,170	106,318	99,172	4.2	-6.7
S Atlantic	3,224	3,661	3,262	1.2	-10.9
E N Central	197,866	216,634	195,805	-1.0	-9.6
W N Central	98,662	105,463	97,504	-1.2	-7.5
S Central	4,057	4,227	4,352	7.3	3.0
West	233,180	261,257	244,378	4.8	-6.5

¹ Revised.

² States not shown when fewer than 3 plants reported or individual plant operations could be disclosed. Percent change shown only when comparable States are included in the calculation.

American Cheese: Production by State and United States, February 2001-2002

State	Feb 2001	Jan ¹ 2002	Feb 2002	Change From	
				Feb 2001	Jan 2002
	<i>1,000 Pounds</i>	<i>1,000 Pounds</i>	<i>1,000 Pounds</i>	<i>Percent</i>	<i>Percent</i>
CA	53,429	64,319	58,708	9.9	-8.7
ID	35,988	40,170	38,325	6.5	-4.6
IA	10,853	11,898	10,903	0.5	-8.4
MN	48,195	51,855	46,664	-3.2	-10.0
NY	7,498	9,230	8,937	19.2	-3.2
ND	1,189	1,630	1,833	54.2	12.5
OH	2,650	3,373	2,774	4.7	-17.8
OR	4,821	7,391	7,035	45.9	-4.8
SD	5,356	6,549	6,148	14.8	-6.1
UT	2,028	1,721	1,843	-9.1	7.1
WA		12,378	11,539		-6.8
WI	66,571	74,400	67,900	2.0	-8.7
Oth Sts ²	36,175	30,252	26,033	-28.0	-13.9
US	274,753	315,166	288,642	5.1	-8.4
Atlantic	12,838	15,868	14,326	11.6	-9.7
E N Central	70,490	79,361	71,739	1.8	-9.6
W N Central	65,596	71,934	65,551	-0.1	-8.9
S Central	3,753	4,102	3,928	4.7	-4.2
West	122,076	143,901	133,098	9.0	-7.5

¹ Revised.

² States not shown when fewer than 3 plants reported or individual plant operations could be disclosed. Percent change shown only when comparable States are included in the calculation.

Cheddar Cheese: Production by State and United States, February 2001-2002

State	Feb 2001	Jan ¹ 2002	Feb 2002	Change From	
				Feb 2001	Jan 2002
	<i>1,000 Pounds</i>	<i>1,000 Pounds</i>	<i>1,000 Pounds</i>	<i>Percent</i>	<i>Percent</i>
CA	39,926	48,732	45,074	12.9	-7.5
ID	18,015	18,598	18,558	3.0	-0.2
MN	45,936	49,525	44,291	-3.6	-10.6
NY	7,392	9,137	8,875	20.1	-2.9
WI	51,700	59,100	54,000	4.4	-8.6
Oth Sts ²	51,978	61,064	55,025	5.9	-9.9
US	214,947	246,156	225,823	5.1	-8.3
Atlantic	12,348	15,333	13,926	12.8	-9.2
E N Cen	53,457	61,693	56,111	5.0	-9.0
W N Cen	57,438	62,374	56,073	-2.4	-10.1
S Cen	3,748	4,102	3,903	4.1	-4.9
West	87,956	102,654	95,810	8.9	-6.7

¹ Revised.

² States not shown when fewer than 3 plants reported or individual plant operations could be disclosed. Percent change shown only when comparable States are included in the calculation.

Mozzarella Cheese: Production by State and United States, February 2001-2002

State	Feb 2001	Jan ¹ 2002	Feb 2002	Change From	
				Feb 2001	Jan 2002
	<i>1,000 Pounds</i>	<i>1,000 Pounds</i>	<i>1,000 Pounds</i>	<i>Percent</i>	<i>Percent</i>
CA	52,984	58,628	55,576	4.9	-5.2
NY	19,975	17,813	15,671	-21.5	-12.0
SD	4,278	5,227	4,697	9.8	-10.1
WI	54,700	59,330	55,300	1.1	-6.8
Oth Sts ²	82,156	83,116	78,058	-5.0	-6.1
US	214,093	224,114	209,302	-2.2	-6.6
Atlantic	43,924	44,442	40,367	-8.1	-9.2
E N Central	66,759	72,366	67,116	0.5	-7.3
W N Central	15,861				
West	87,549	91,640	86,953	-0.7	-5.1

¹ Revised.

² States not shown when fewer than 3 plants reported or individual plant operations could be disclosed. Percent change shown only when comparable States are included in the calculation.

Butter: Production by State and United States, February 2001-2002

State	Feb 2001	Jan ¹ 2002	Feb 2002	Change From	
				Feb 2001	Jan 2002
	<i>1,000 Pounds</i>	<i>1,000 Pounds</i>	<i>1,000 Pounds</i>	<i>Percent</i>	<i>Percent</i>
CA	31,915	35,468	31,956	0.1	-9.9
NY	2,645	2,147	2,901	9.7	35.1
ND	333				
PA	7,375	7,596	7,413	0.5	-2.4
WA		9,331	8,314		-10.9
WI	28,967	40,132	32,800	13.2	-18.3
Oth Sts ²	38,940	46,013	42,083	8.1	-8.5
US	110,175	140,687	125,467	13.9	-10.8
N Atlantic	15,418	13,863	14,240	-7.6	2.7
E N Central	33,469	45,183	38,472	14.9	-14.9
W N Central	10,735	14,196	11,517	7.3	-18.9
West	43,768	50,011	45,719	4.5	-8.6

¹ Revised.

² States not shown when fewer than 3 plants reported or individual plant operations could be disclosed. Percent change shown only when comparable States are included in the calculation.

**Nonfat Dry Milk, Human: Production by State
and United States, February 2001-2002**

State	Feb 2001	Jan ¹ 2002	Feb 2002	Change From	
				Feb 2001	Jan 2002
	<i>1,000 Pounds</i>	<i>1,000 Pounds</i>	<i>1,000 Pounds</i>	<i>Percent</i>	<i>Percent</i>
CA	54,362	55,266	49,177	-9.5	-11.0
NM	2,089				
ND		61	61		
WA		10,215	19,228		88.2
Oth Sts ²	75,964	53,350	56,693	-25.4	6.3
US	132,415	118,892	125,159	-5.5	5.3
Atlantic	13,934	17,228	17,625	26.5	2.3
E N Central	4,596	4,614	5,517	20.0	19.6
W N Central	6,965	6,764	7,019	0.8	3.8
West	102,660	83,641	88,191	-14.1	5.4

¹ Revised.

² States not shown when fewer than 3 plants reported or individual plant operations could be disclosed. Percent change shown only when comparable States are included in the calculation.

**Dry Whey, Human: Production by State
and United States, February 2001-2002**

State	Feb 2001	Jan ¹ 2002	Feb 2002	Change From	
				Feb 2001	Jan 2002
	<i>1,000 Pounds</i>	<i>1,000 Pounds</i>	<i>1,000 Pounds</i>	<i>Percent</i>	<i>Percent</i>
CA	10,940	12,100	10,705	-2.1	-11.5
MN	6,081	6,361	5,920	-2.6	-6.9
NY	9,893	10,472	9,951	0.6	-5.0
PA	7,823	8,391	8,454	8.1	0.8
WA		6,124	6,553		7.0
WI	21,132	24,991	22,600	6.9	-9.6
Oth Sts ²	29,084	16,134	15,209	-47.7	-5.7
US	84,953	84,573	79,392	-6.5	-6.1
Atlantic	17,716	18,863	18,405	3.9	-2.4
Central	38,760	43,708	40,024	3.3	-8.4
West	28,477	22,002	20,963	-26.4	-4.7

¹ Revised.

² States not shown when fewer than 3 plants reported or individual plant operations could be disclosed. Percent change shown only when comparable States are included in the calculation.

Ice Cream, Hard: Production by State and United States, February 2001-2002

State	Feb 2001	Jan ¹ 2002	Feb 2002	Change From	
				Feb 2001	Jan 2002
	<i>1,000 Gallons</i>	<i>1,000 Gallons</i>	<i>1,000 Gallons</i>	<i>Percent</i>	<i>Percent</i>
CA	8,297	8,171	9,324	12.4	14.1
FL	1,950	1,900	2,000	2.6	5.3
IL	2,670	2,071	2,596	-2.8	25.4
IN	6,213	7,031	6,717	8.1	-4.5
MD	1,461	1,476	1,670	14.3	13.1
MA	4,941	7,612	5,482	10.9	-28.0
MI	1,388	1,614	1,805	30.0	11.8
MN	3,035	2,633	3,584	18.1	36.1
NH	7	6	8	14.3	33.3
NM	219				
NY	2,500	2,100	2,300	-8.0	9.5
NC	1,405	1,424	1,488	5.9	4.5
ND	94				
OH	2,403	2,687	2,671	11.2	-0.6
OR	780	790	850	9.0	7.6
PA	2,666	3,879	2,956	10.9	-23.8
SD	2	3	2		-33.3
TN	1,358	1,331	1,574	15.9	18.3
TX	4,121	4,153	4,041	-1.9	-2.7
UT	1,066	1,323	1,162	9.0	-12.2
WA	1,314	1,375	1,164	-11.4	-15.3
Oth Sts ²	19,248	18,425	19,567	1.7	6.2
US	67,138	70,004	70,961	5.7	1.4
N Atlantic	12,595	16,463	13,090	3.9	-20.5
S Atlantic	6,131	5,931	6,544	6.7	10.3
E N Central	13,474	14,003	14,514	7.7	3.6
W N Central	11,404	11,442	12,255	7.5	7.1
S Central	8,425	8,066	8,302	-1.5	2.9
West	15,109	14,099	16,256	7.6	15.3

¹ Revised.

² States not shown when fewer than 3 plants reported or individual plant operations could be disclosed. Percent change shown only when comparable States are included in the calculation.

**Canned Milk and Dry Milk Products: Manufacturers' Shipments,
Stocks, and Selling Prices, February, 2001-2002**

Product	Feb 2001	Jan 2002 ¹	Feb 2002	Change From	
				Feb 2001	Jan 2002
	Manufacturers' Shipments ²				
	<i>1,000 Pounds</i>	<i>1,000 Pounds</i>	<i>1,000 Pounds</i>	<i>Percent</i>	<i>Percent</i>
Nonfat Dry Milk, Human	145,827	156,599	142,936	-2.0	-8.7
	Manufacturers' Stocks End-of-Month ³				
	<i>1,000 Pounds</i>	<i>1,000 Pounds</i>	<i>1,000 Pounds</i>	<i>Percent</i>	<i>Percent</i>
Canned Evaporated and Condensed Whole Milk	43,272	42,080	45,785	5.8	8.8
Nonfat Dry Milk, Human	137,738	120,042	139,905	1.6	16.5
Dry Buttermilk, Total	6,283	8,704	8,595	36.8	-1.3

¹ Revised.

² For dry products, shipments of bulk goods only.

³ Stocks held by manufacturers at all points and in transit.

Procedures and Reliability: Estimates included in this report are based on data provided each month by manufacturers of these products. In 32 States, the State Departments of Agriculture assist in collection of data, which eliminates duplicate reporting and reduces respondent burden. Data are collected by mail, personal and telephone interviews following the close of each month. There were 1,124 manufacturers that made one or more products in 2000. Each month, reports are generally received from all dairy plants in States with small numbers of plants. In States with large numbers of plants, survey procedures are designed to obtain monthly reports from all large plants and from a sample of small plants. Monthly estimates are based upon returns from about 70 percent of the plants which account for 70 to 90 percent of the total production of major dairy products.

Revision Policy: Monthly estimates are subject to revision the month following the preliminary estimates. Annual estimates are published in the "**Dairy Products**" report published each April which includes any revisions made to current and previous year. In preparing the annual report, an attempt is made to get information from all plants.

The next "Dairy Products" report will be released at 3 p.m. ET on May 3, 2002.

The United States Department of Agriculture (USDA) prohibits discrimination in all its programs on the basis of race, color, national origin, gender, religion, age, disability, political beliefs, sexual orientation, and marital or family status. (Not all prohibited bases apply to all programs.) Persons with disabilities who require alternative means for communication of program information (braille, large print, audiotape, etc.) should contact the USDA's TARGET Center at 202-720-2600 (voice and TDD).

To file a complaint of discrimination, write USDA, Director, Office of Civil Rights, Room 326-W, Whitten Building, 1400 Independence Avenue, SW, Washington, D.C., 20250-9410, or call 202-720-5964 (voice or TDD). USDA is an equal opportunity provider and employer.

ACCESS TO REPORTS!!

For your convenience, there are several ways to obtain NASS reports, data products, and services:

INTERNET ACCESS

All NASS reports are available free of charge on the worldwide Internet. For access, connect to the Internet and go to the NASS Home Page at: <http://www.usda.gov/nass/>. Select "Today's Reports" or Publications and then Reports by Calendar or Publications and then Search, by Title or Subject.

E-MAIL SUBSCRIPTION

There are two options for subscribing via e-mail. All NASS reports are available by subscription free of charge direct to your e-mail address. 1) Starting with the NASS Home Page at <http://www.usda.gov/nass/>, click on **Publications**, then click on the **Subscribe by E-mail** button which takes you to the page describing e-mail delivery of reports. Finally, click on **Go to the Subscription Page** and follow the instructions. 2) If you do NOT have Internet access, send an e-mail message to: usda-reports@usda.mannlib.cornell.edu. In the body of the message type the word: **list**.

AUTOFAX ACCESS

NASSFax service is available for some reports from your fax machine. Please call 202-720-2000, using the handset attached to your fax. Respond to the voice prompts. Document 0411 is a list of available reports.

PRINTED REPORTS OR DATA PRODUCTS

CALL OUR TOLL-FREE ORDER DESK: 800-999-6779 (U.S. and Canada)
Other areas, please call 703-605-6220 FAX: 703-605-6900
(Visa, MasterCard, check, or money order acceptable for payment.)

ASSISTANCE

For **assistance** with general agricultural statistics or further information about NASS or its products or services, contact the **Agricultural Statistics Hotline** at **800-727-9540**, 7:30 a.m. to 4:00 p.m. ET, or e-mail: nass@nass.usda.gov.
