

Released May 3, 2002, by the National Agricultural Statistics Service (NASS), Agricultural Statistics Board, U.S. Department of Agriculture. For information on "Dairy Products" call Kevin Pautler at (202) 720-9168, office hours 7:15 a.m. to 4:00 p.m. ET.

March 2002 Highlights

Total cheese output (excluding cottage cheese) was 717 million pounds, 0.5 percent above March 2001 and 10.8 percent above February 2002

American type cheese production totaled 316 million pounds, 6.5 percent above March 2001 and 10.1 percent above February 2002.

Butter production was 129 million pounds in March, 15.8 percent above March 2001 and 2.9 percent above February 2002.

Frozen dessert: (comparisons with March 2001)

Ice cream, Regular (hard) --- 76.7 million gallons, down 0.5 percent.
Ice cream, Lowfat (total) --- 31.2 million gallons, down 11.3 percent.
Ice cream, Nonfat (hard) --- 2.04 million gallons, up 18.9 percent.
Sherbet (hard) --- 4.79 million gallons, up 6.5 percent.
Frozen Yogurt (total) --- 7.18 million gallons, down 2.8 percent.

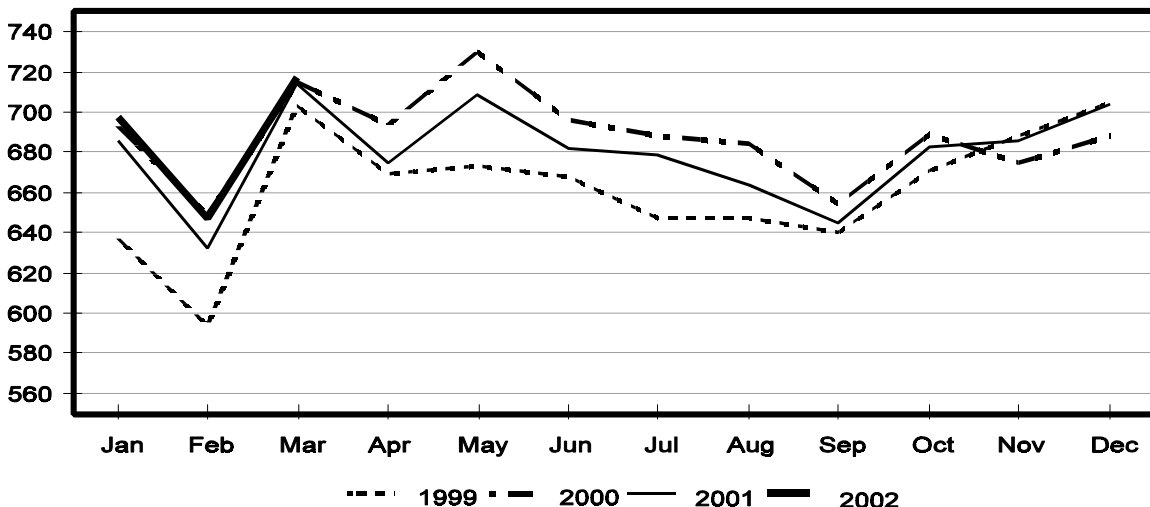
Nonfat dry milk for human food: (compared with March 2001) --- 143 million pounds, up 17.9 percent.

Dry whey products: (comparisons with March 2001)

Dry whey, human --- 91.7 million pounds, up 4.2 percent.
Dry whey, animal --- 4.59 million pounds, down 12.9 percent.
Dry whey, total --- 96.3 million pounds, up 3.3 percent.

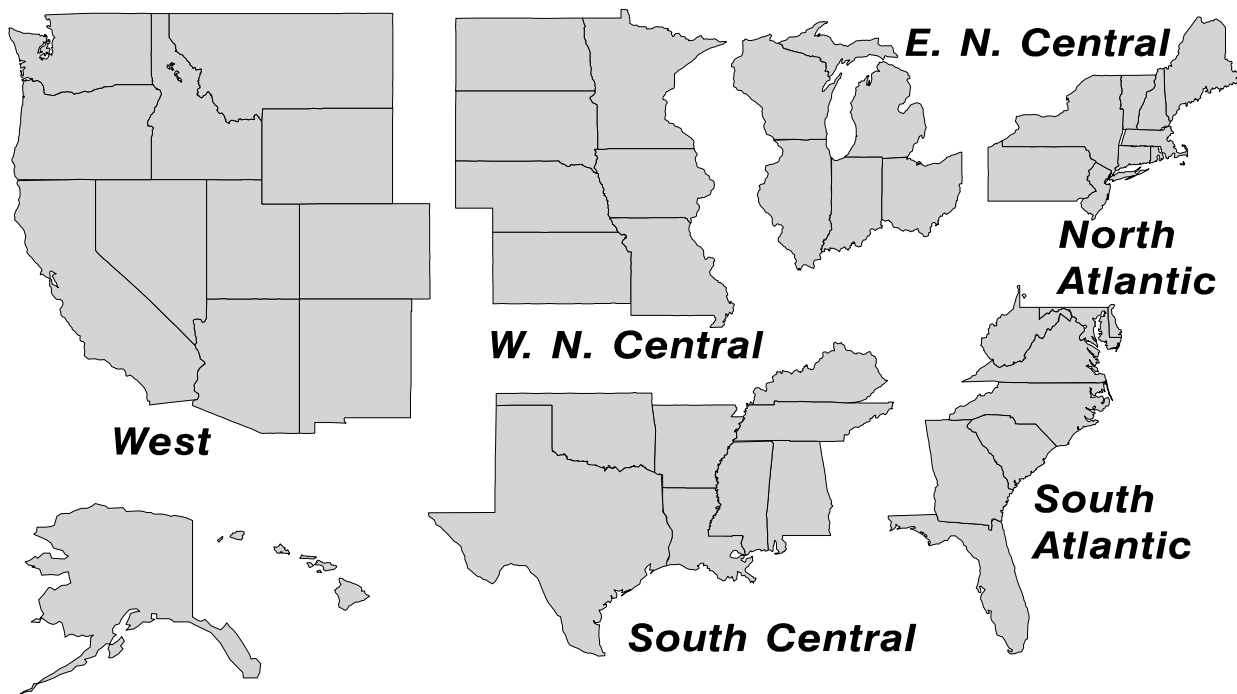
Total Cheese Production United States

Million Pounds



U. S. Geographic Regions Dairy Products

State totals are not published when fewer than 3 firms have reported or one firm comprises more than 60 percent of the State total. If we are not able to publish a region for confidentiality reasons, it will be combined with other regions when possible. For example, if North Atlantic can not be published, then it will be combined with South Atlantic to publish Atlantic. The West North Central and East North Central will be combined, if necessary, to form North Central. In the event that neither could be published, they may be combined with South Central to publish Central. Some tables will have only limited regions shown, therefore the regions may not add to the United States total.



**Dairy Products: Production by Product,
United States, March, 2001-2002**

Product	Mar 2001	Feb 2002 ¹	Mar 2002	Change From	
				Mar 2001	Feb 2002
	<i>1,000 Pounds</i>	<i>1,000 Pounds</i>	<i>1,000 Pounds</i>	<i>Percent</i>	<i>Percent</i>
Butter	111,374	125,352	128,972	15.8	2.9
Cheese					
American Types ²	297,097	287,383	316,452	6.5	10.1
Cheddar	233,113	224,971	246,883	5.9	9.7
Swiss	20,801	18,838	20,447	-1.7	8.5
Brick and Muenster	8,175	6,313	6,602	-19.2	4.6
Cream and Neufchatel	60,040	44,016	54,687	-8.9	24.2
Hispanic	8,577	8,884	9,199	7.3	3.5
Mozzarella	238,805	213,429	234,694	-1.7	10.0
Other Italian Types	63,778	52,548	58,045	-9.0	10.5
Total Italian Types	302,583	265,977	292,739	-3.3	10.1
All Other Types	16,449	15,680	17,013	3.4	8.5
Total	713,722	647,091	717,139	0.5	10.8
Cottage Cheese, Curd ³	40,422	35,178	38,354	-5.1	9.0
Cottage Cheese, Cream ⁴	32,915	28,788	31,664	-3.8	10.0
Cottage Cheese, Lowfat ⁵	32,994	30,006	32,395	-1.8	8.0
Canned Evaporated and					
Condensed Whole Milk	33,779	29,417	40,510	19.9	37.7
Dry Whole Milk	2,842	4,219	1,922	-32.4	-54.4
Nonfat Dry Milk, Human	121,080	125,838	142,792	17.9	13.5
Dry Skim Milk, Animal	454	852	674	48.5	-20.9
Dry Buttermilk	5,162	4,888	5,790	12.2	18.5
Yogurt, Plain & Flavored	173,076	162,903	179,575	3.8	10.2
	<i>1,000 Gallons</i>	<i>1,000 Gallons</i>	<i>1,000 Gallons</i>	<i>Percent</i>	<i>Percent</i>
Frozen Products					
Ice Cream, Hard	77,071	71,034	76,692	-0.5	8.0
Ice Cream, Lowfat, Hard	7,630	6,404	8,313	9.0	29.8
Ice Cream, Lowfat, Soft	27,576	18,572	22,900	-17.0	23.3
Ice Cream, Lowfat, Total	35,206	24,976	31,213	-11.3	25.0
Ice Cream, Nonfat, Hard	1,712	1,610	2,035	18.9	26.4
Sherbet, Hard	4,494	4,050	4,785	6.5	18.1
Water and Juice Ices	5,959	5,033	6,182	3.7	22.8
Frozen Yogurt, Total	7,388	6,348	7,184	-2.8	13.2
Regular & Lowfat, Hard	2,297	2,012	2,413	5.1	19.9
Nonfat, Hard	1,227	968	1,184	-3.5	22.3
Other Frozen Dairy					
Products	840	790	629	-25.1	-20.4
Mix for Frozen Products					
Ice Cream Mix	43,879	40,595	45,536	3.8	12.2
Ice Cream, Lowfat, Mix	18,654	13,863	17,313	-7.2	24.9
Ice Cream, Nonfat, Mix	1,056	1,059	1,276	20.8	20.5
Sherbet Mix	3,229	2,848	3,409	5.6	19.7
Yogurt Mix	3,807	3,734	4,226	11.0	13.2

¹ Revised.

² Includes Cheddar, Colby, Monterey, and Jack.

³ Mostly used for processing into cream or lowfat cottage cheese.

⁴ Fat content 4 percent or more.

⁵ Fat content less than 4 percent.

**Whey and Modified Whey Products: Production, Stocks,
and Prices, United States, March, 2001-2002**

Product	Mar 2001	Feb 2002 ¹	Mar 2002	Change From	
				Mar 2001	Feb 2002
Production					
	<i>1,000 Pounds</i>	<i>1,000 Pounds</i>	<i>1,000 Pounds</i>	<i>Percent</i>	<i>Percent</i>
Condensed Whey, Solids Content ²					
Sweet-Type, Human	5,262	6,487	8,653	64.4	33.4
Sweet-Type, Animal	1,200	980	962	-19.8	-1.8
Dry Whey Products					
Dry Whey, Human	87,965	80,242	91,682	4.2	14.3
Dry Whey, Animal	5,276	5,636	4,594	-12.9	-18.5
Dry Whey, Total	93,241	85,878	96,276	3.3	12.1
Reduced Lactose and Minerals					
Human Food	6,922	7,666	8,227	18.9	7.3
Animal Feed	3,366	3,483	3,507	4.2	0.7
Lactose, Human and Animal	44,312	43,985	49,297	11.2	12.1
Whey					
Solids in Wet Blends, Animal	2,806	3,988	2,704	-3.6	-32.2
Protein Concentrate, Human	22,814	25,785	28,178	23.5	9.3
Protein Concentrate, Animal	3,913	3,225	3,348	-14.4	3.8
Manufacturers' Stocks End-of-Month ³					
	<i>1,000 Pounds</i>	<i>1,000 Pounds</i>	<i>1,000 Pounds</i>	<i>Percent</i>	<i>Percent</i>
Dry Whey Products					
Dry Whey, Human	30,809	37,151	42,408	37.6	14.2
Dry Whey, Animal	4,923	1,427	1,044	-78.8	-26.8
Reduced Lactose and Minerals					
Human and Animal ⁴	5,352	8,078	8,283	54.8	2.5
Lactose, Human and Animal	28,039	27,856	33,014	17.7	18.5
Whey Protein Concentrate, Human	11,083	21,071	24,572	121.7	16.6
Whey Protein Concentrate, Animal	1,908	1,648	1,305	-31.6	-20.8
Manufacturers' Selling Price ⁵					
	<i>Cents per Pound</i>	<i>Cents per Pound</i>	<i>Cents per Pound</i>	<i>Cents Change</i>	<i>Cents Change</i>
Dry Whey, Animal	21.7	20.8	18.3	-3.4	-2.5

¹ Revised.

² Final marketable product only. Does not include quantity used or shipped to another plant for further processing into dry whey or modified whey products.

³ Stocks held by manufacturers at all points and in transit.

⁴ Reduced lactose and minerals stocks combined to avoid disclosure of individual operations.

⁵ Prices for bulk goods, f.o.b. plant. Average monthly prices reported by firms.

**Dairy Products: Production by Product and Month,
United States, 2001-2002 ¹**

Product and Month	By Month			Cumulative		
	2001	2002	Change From 2001	2001	2002	Change From 2001
	<i>1,000 Pounds</i>	<i>1,000 Pounds</i>	<i>Percent</i>	<i>1,000 Pounds</i>	<i>1,000 Pounds</i>	<i>Percent</i>
Total Cheese						
Jan	680,299	697,560	2.5	680,299	697,560	2.5
Feb	625,310	647,091	3.5	1,305,609	1,344,651	3.0
Mar	713,722	717,139	0.5	2,019,331	2,061,790	2.1
Apr	670,221			2,689,552		
May	706,790			3,396,342		
Jun	678,517			4,074,859		
Jul	676,018			4,750,877		
Aug	660,033			5,410,910		
Sep	641,785			6,052,695		
Oct	682,080			6,734,775		
Nov	691,229			7,426,004		
Dec	703,090			8,129,094		
American Cheese						
Jan	300,419	315,166	4.9	300,419	315,166	4.9
Feb	270,134	287,383	6.4	570,553	602,549	5.6
Mar	297,097	316,452	6.5	867,650	919,001	5.9
Apr	291,905			1,159,555		
May	308,548			1,468,103		
Jun	304,618			1,772,721		
Jul	293,372			2,066,093		
Aug	281,527			2,347,620		
Sep	277,046			2,624,666		
Oct	295,991			2,920,657		
Nov	286,276			3,206,933		
Dec	312,229			3,519,162		
Cheddar Cheese						
Jan	236,611	246,156	4.0	236,611	246,156	4.0
Feb	211,627	224,971	6.3	448,238	471,127	5.1
Mar	233,113	246,883	5.9	681,351	718,010	5.4
Apr	229,129			910,480		
May	244,614			1,155,094		
Jun	239,366			1,394,460		
Jul	230,631			1,625,091		
Aug	216,481			1,841,572		
Sep	216,267			2,057,839		
Oct	230,948			2,288,787		
Nov	217,992			2,506,779		
Dec	239,698			2,746,477		

See footnote(s) at end of table.

--continued

**Dairy Products: Production by Product and Month,
United States, 2001-2002 ¹ (continued)**

Product and Month	By Month			Cumulative		
	2001	2002	Change From 2001	2001	2002	Change From 2001
	<i>1,000 Pounds</i>	<i>1,000 Pounds</i>	<i>Percent</i>	<i>1,000 Pounds</i>	<i>1,000 Pounds</i>	<i>Percent</i>
Italian Cheese						
Jan	284,866	282,491	-0.8	284,866	282,491	-0.8
Feb	268,060	265,977	-0.8	552,926	548,468	-0.8
Mar	302,583	292,739	-3.3	855,509	841,207	-1.7
Apr	272,459			1,127,968		
May	286,039			1,414,007		
Jun	269,665			1,683,672		
Jul	275,857			1,959,529		
Aug	266,736			2,226,265		
Sep	262,616			2,488,881		
Oct	265,763			2,754,644		
Nov	283,112			3,037,756		
Dec	290,516			3,328,272		
Mozzarella Cheese						
Jan	226,475	224,114	-1.0	226,475	224,114	-1.0
Feb	214,507	213,429	-0.5	440,982	437,543	-0.8
Mar	238,805	234,694	-1.7	679,787	672,237	-1.1
Apr	215,432			895,219		
May	230,249			1,125,468		
Jun	222,013			1,347,481		
Jul	224,953			1,572,434		
Aug	211,184			1,783,618		
Sep	212,654			1,996,272		
Oct	214,476			2,210,748		
Nov	224,558			2,435,306		
Dec	230,443			2,665,749		
Other Italian						
Jan	58,391	58,377		58,391	58,377	
Feb	53,553	52,548	-1.9	111,944	110,925	-0.9
Mar	63,778	58,045	-9.0	175,722	168,970	-3.8
Apr	57,027			232,749		
May	55,790			288,539		
Jun	47,652			336,191		
Jul	50,904			387,095		
Aug	55,552			442,647		
Sep	49,962			492,609		
Oct	51,287			543,896		
Nov	58,554			602,450		
Dec	60,073			662,523		

See footnote(s) at end of table.

--continued

**Dairy Products: Production by Product and Month,
United States, 2001-2002 ¹ (continued)**

Product and Month	By Month			Cumulative		
	2001	2002	Change From 2001	2001	2002	Change From 2001
	<i>1,000 Pounds</i>	<i>1,000 Pounds</i>	<i>Percent</i>	<i>1,000 Pounds</i>	<i>1,000 Pounds</i>	<i>Percent</i>
Butter						
Jan	127,356	140,687	10.5	127,356	140,687	10.5
Feb	111,809	125,352	12.1	239,165	266,039	11.2
Mar	111,374	128,972	15.8	350,539	395,011	12.7
Apr	108,975			459,514		
May	111,001			570,515		
Jun	86,783			657,298		
Jul	84,210			741,508		
Aug	75,557			817,065		
Sep	86,721			903,786		
Oct	109,911			1,013,697		
Nov	100,079			1,113,776		
Dec	123,025			1,236,801		
Nonfat Dry Milk, Human						
Jan	118,299	118,892	0.5	118,299	118,892	0.5
Feb	119,068	125,838	5.7	237,367	244,730	3.1
Mar	121,080	142,792	17.9	358,447	387,522	8.1
Apr	131,695			490,142		
May	140,423			630,565		
Jun	131,455			762,020		
Jul	117,452			879,472		
Aug	96,127			975,599		
Sep	94,396			1,069,995		
Oct	105,788			1,175,783		
Nov	107,211			1,282,994		
Dec	130,805			1,413,799		
Total Dry Whey ²						
Jan	88,994	90,205	1.4	88,994	90,205	1.4
Feb	84,053	85,878	2.2	173,047	176,083	1.8
Mar	93,241	96,276	3.3	266,288	272,359	2.3
Apr	89,600			355,888		
May	94,120			450,008		
Jun	91,432			541,440		
Jul	92,044			633,484		
Aug	83,119			716,603		
Sep	76,322			792,925		
Oct	79,617			872,542		
Nov	82,295			954,837		
Dec	90,955			1,045,792		

See footnote(s) at end of table.

--continued

**Dairy Products: Production by Product and Month,
United States, 2001-2002 ¹ (continued)**

Product and Month	By Month			Cumulative		
	2001	2002	Change From 2001	2001	2002	Change From 2001
	<i>1,000 Pounds</i>	<i>1,000 Pounds</i>	<i>Percent</i>	<i>1,000 Pounds</i>	<i>1,000 Pounds</i>	<i>Percent</i>
Cream Cottage Cheese						
Jan	31,088	29,765	-4.3	31,088	29,765	-4.3
Feb	28,137	28,788	2.3	59,225	58,553	-1.1
Mar	32,915	31,664	-3.8	92,140	90,217	-2.1
Apr	29,684			121,824		
May	33,883			155,707		
Jun	31,283			186,990		
Jul	32,521			219,511		
Aug	33,575			253,086		
Sep	29,825			282,911		
Oct	31,324			314,235		
Nov	29,778			344,013		
Dec	27,512			371,525		
Lowfat Cottage Cheese						
Jan	30,262	29,609	-2.2	30,262	29,609	-2.2
Feb	28,858	30,006	4.0	59,120	59,615	0.8
Mar	32,994	32,395	-1.8	92,114	92,010	-0.1
Apr	29,825			121,939		
May	35,011			156,950		
Jun	30,705			187,655		
Jul	31,387			219,042		
Aug	35,659			254,701		
Sep	29,764			284,465		
Oct	31,192			315,657		
Nov	28,402			344,059		
Dec	26,825			370,884		
	<i>1,000 Gallons</i>	<i>1,000 Gallons</i>	<i>Percent</i>	<i>1,000 Gallons</i>	<i>1,000 Gallons</i>	<i>Percent</i>
Ice Cream, Hard						
Jan	67,446	70,004	3.8	67,446	70,004	3.8
Feb	67,583	71,034	5.1	135,029	141,038	4.5
Mar	77,071	76,692	-0.5	212,100	217,730	2.7
Apr	78,501			290,601		
May	80,467			371,068		
Jun	84,752			455,820		
Jul	82,043			537,863		
Aug	79,827			617,690		
Sep	70,197			687,887		
Oct	67,595			755,482		
Nov	59,123			814,605		
Dec	54,548			869,153		

See footnote(s) at end of table.

--continued

**Dairy Products: Production by Product and Month,
United States, 2001-2002 ¹ (continued)**

Product and Month	By Month			Cumulative		
	2001	2002	Change From 2001	2001	2002	Change From 2001
	<i>1,000 Gallons</i>	<i>1,000 Gallons</i>	<i>Percent</i>	<i>1,000 Gallons</i>	<i>1,000 Gallons</i>	<i>Percent</i>
Ice Cream, Lowfat						
Jan	26,825	22,119	-17.5	26,825	22,119	-17.5
Feb	27,510	24,976	-9.2	54,335	47,095	-13.3
Mar	35,206	31,213	-11.3	89,541	78,308	-12.5
Apr	36,974			126,515		
May	41,675			168,190		
Jun	43,893			212,083		
Jul	41,495			253,578		
Aug	39,978			293,556		
Sep	31,511			325,067		
Oct	30,776			355,843		
Nov	25,239			381,082		
Dec	25,664			406,746		
Ice Cream, NF, Hard						
Jan	1,369	2,074	51.5	1,369	2,074	51.5
Feb	1,451	1,610	11.0	2,820	3,684	30.6
Mar	1,712	2,035	18.9	4,532	5,719	26.2
Apr	1,558			6,090		
May	1,789			7,879		
Jun	2,082			9,961		
Jul	1,655			11,616		
Aug	1,835			13,451		
Sep	1,694			15,145		
Oct	1,490			16,635		
Nov	1,333			17,968		
Dec	1,204			19,172		
Sherbet, Hard						
Jan	3,552	3,796	6.9	3,552	3,796	6.9
Feb	3,858	4,050	5.0	7,410	7,846	5.9
Mar	4,494	4,785	6.5	11,904	12,631	6.1
Apr	4,227			16,131		
May	5,150			21,281		
Jun	5,310			26,591		
Jul	5,037			31,628		
Aug	4,654			36,282		
Sep	3,731			40,013		
Oct	3,575			43,588		
Nov	3,010			46,598		
Dec	2,870			49,468		

See footnote(s) at end of table.

--continued

**Dairy Products: Production by Product and Month,
United States, 2001-2002 ¹ (continued)**

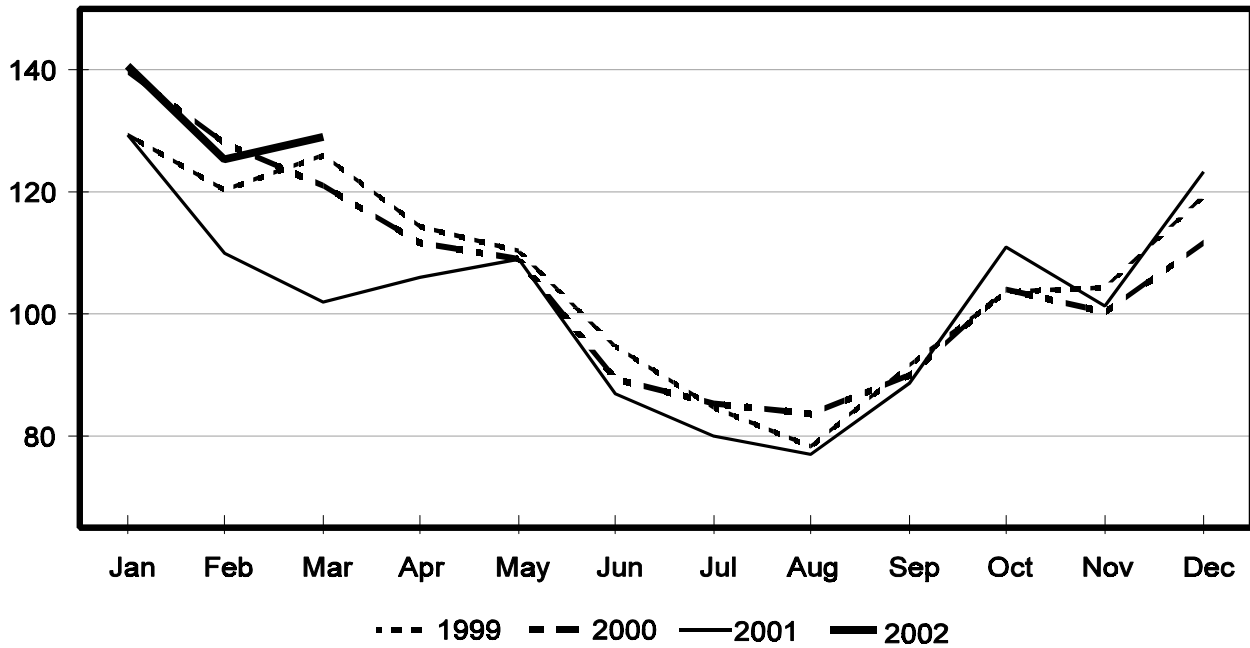
Product and Month	By Month			Cumulative		
	2001	2002	Change From 2001	2001	2002	Change From 2001
	<i>1,000 Gallons</i>	<i>1,000 Gallons</i>	<i>Percent</i>	<i>1,000 Gallons</i>	<i>1,000 Gallons</i>	<i>Percent</i>
Frozen Yogurt						
Jan	6,516	5,976	-8.3	6,516	5,976	-8.3
Feb	5,939	6,348	6.9	12,455	12,324	-1.1
Mar	7,388	7,184	-2.8	19,843	19,508	-1.7
Apr	6,970			26,813		
May	7,886			34,699		
Jun	7,755			42,454		
Jul	7,370			49,824		
Aug	8,067			57,891		
Sep	5,895			63,786		
Oct	5,887			69,673		
Nov	5,329			75,002		
Dec	4,597			79,599		

¹ February 2002 data revised.

² Excludes all modified dry whey products.

Total Butter Production United States

Million Pounds



**Total Cheese, Excluding Cottage Cheese: Production by
State and United States, March 2001-2002**

State	Mar 2001	Feb ¹ 2002	Mar 2002	Change From	
				Mar 2001	Feb 2002
	<i>1,000 Pounds</i>	<i>1,000 Pounds</i>	<i>1,000 Pounds</i>	<i>Percent</i>	<i>Percent</i>
CA	134,618	129,055	142,091	5.6	10.1
ID	47,449	48,370	50,991	7.5	5.4
IL	9,188	7,076	7,510	-18.3	6.1
IA	25,025	21,409	24,749	-1.1	15.6
MA	75	68	84	12.0	23.5
MN	57,503	48,842	51,994	-9.6	6.5
MO	10,255	7,480	8,069	-21.3	7.9
NY	62,067	55,697	63,784	2.8	14.5
OH	12,845	12,638	13,502	5.1	6.8
PA	33,161	33,165	31,741	-4.3	-4.3
SD	12,203	12,235	13,312	9.1	8.8
UT	5,209	4,494	5,153	-1.1	14.7
WA	11,403	11,780	13,240	16.1	12.4
WI	187,195	163,429	185,741	-0.8	13.7
Oth Sts ²	105,526	91,353	105,178	-0.3	15.1
US	713,722	647,091	717,139	0.5	10.8
N Atlantic	111,134	103,258	112,266	1.0	8.7
S Atlantic	3,197	3,262	3,351	4.8	2.7
E N Central	223,968	196,112	221,087	-1.3	12.7
W N Central	115,088	98,260	108,088	-6.1	10.0
S Central	5,332	4,350	5,556	4.2	27.7
West	255,003	241,849	266,791	4.6	10.3

¹ Revised.

² States not shown when fewer than 3 plants reported or individual plant operations could be disclosed. Percent change shown only when comparable States are included in the calculation.

American Cheese: Production by State and United States, March 2001-2002

State	Mar 2001	Feb ¹ 2002	Mar 2002	Change From	
				Mar 2001	Feb 2002
	<i>1,000 Pounds</i>	<i>1,000 Pounds</i>	<i>1,000 Pounds</i>	<i>Percent</i>	<i>Percent</i>
CA	56,729	56,498	66,768	17.7	18.2
ID	37,808	38,325	40,340	6.7	5.3
IA	12,247	10,994	11,915	-2.7	8.4
MN	52,989	47,477	50,035	-5.6	5.4
NY	7,526	8,944	9,110	21.0	1.9
OH	2,105	2,774	2,981	41.6	7.5
OR	5,364	7,035	7,943	48.1	12.9
SD	6,831	6,148	6,676	-2.3	8.6
WA	11,234	11,539	13,043	16.1	13.0
WI	72,285	67,900	73,220	1.3	7.8
Oth Sts ²	31,979	29,749	34,421	7.6	15.7
US	297,097	287,383	316,452	6.5	10.1
Atlantic	12,917	14,375	14,803	14.6	3.0
E N Central	75,429	71,739	77,399	2.6	7.9
W N Central	73,338	66,455	70,368	-4.0	5.9
S Central	5,015	3,926	5,229	4.3	33.2
West	130,398	130,888	148,653	14.0	13.6

¹ Revised.

² States not shown when fewer than 3 plants reported or individual plant operations could be disclosed. Percent change shown only when comparable States are included in the calculation.

Cheddar Cheese: Production by State and United States, March 2001-2002

State	Mar 2001	Feb ¹ 2002	Mar 2002	Change From	
				Mar 2001	Feb 2002
	<i>1,000 Pounds</i>	<i>1,000 Pounds</i>	<i>1,000 Pounds</i>	<i>Percent</i>	<i>Percent</i>
CA	42,110	42,864	49,298	17.1	15.0
ID	17,558	18,558	19,631	11.8	5.8
MN	49,428	45,191	47,435	-4.0	5.0
NY	7,446	8,882	9,000	20.9	1.3
WI	59,716	54,000	59,100	-1.0	9.4
Oth Sts ²	56,855	55,476	62,419	9.8	12.5
US	233,113	224,971	246,883	5.9	9.7
Atlantic	12,514	13,975	14,459	15.5	3.5
E N Cen	61,508	56,111	61,336	-0.3	9.3
W N Cen	61,821	57,384	59,702	-3.4	4.0
S Cen	5,000	3,901	5,224	4.5	33.9
West	92,270	93,600	106,162	15.1	13.4

¹ Revised.

² States not shown when fewer than 3 plants reported or individual plant operations could be disclosed. Percent change shown only when comparable States are included in the calculation.

Mozzarella Cheese: Production by State and United States, March 2001-2002

State	Mar 2001	Feb ¹ 2002	Mar 2002	Change From	
				Mar 2001	Feb 2002
	<i>1,000 Pounds</i>	<i>1,000 Pounds</i>	<i>1,000 Pounds</i>	<i>Percent</i>	<i>Percent</i>
CA	57,810	55,576	56,134	-2.9	1.0
NY	21,750	15,671	18,255	-16.1	16.5
WI	62,093	55,300	68,100	9.7	23.1
Oth Sts ²	97,152	86,882	92,205	-5.1	6.1
US	238,805	213,429	234,694	-1.7	10.0
Atlantic	48,950	44,411	44,935	-8.2	1.2
E N Central	76,013	67,199	81,449	7.2	21.2
West	96,424	86,953	91,158	-5.5	4.8

¹ Revised.

² States not shown when fewer than 3 plants reported or individual plant operations could be disclosed. Percent change shown only when comparable States are included in the calculation.

Butter: Production by State and United States, March 2001-2002

State	Mar 2001	Feb ¹ 2002	Mar 2002	Change From	
				Mar 2001	Feb 2002
	<i>1,000 Pounds</i>	<i>1,000 Pounds</i>	<i>1,000 Pounds</i>	<i>Percent</i>	<i>Percent</i>
CA	30,157	31,956	35,826	18.8	12.1
NY	2,458	2,901	2,584	5.1	-10.9
PA	6,832	7,413	8,418	23.2	13.6
WA	8,298	8,314	9,668	16.5	16.3
WI	27,251	32,781	31,800	16.7	-3.0
Oth Sts ²	36,378	41,987	40,676	11.8	-3.1
US	111,374	125,352	128,972	15.8	2.9
N Atlantic	13,880	14,137	15,610	12.5	10.4
E N Central	31,172	38,453	36,157	16.0	-6.0
W N Central	9,283	11,517	11,832	27.5	2.7
West	44,509	45,726	50,903	14.4	11.3

¹ Revised.

² States not shown when fewer than 3 plants reported or individual plant operations could be disclosed. Percent change shown only when comparable States are included in the calculation.

**Nonfat Dry Milk, Human: Production by State
and United States, March 2001-2002**

State	Mar 2001	Feb ¹ 2002	Mar 2002	Change From	
				Mar 2001	Feb 2002
	<i>1,000 Pounds</i>	<i>1,000 Pounds</i>	<i>1,000 Pounds</i>	<i>Percent</i>	<i>Percent</i>
CA	58,592	49,177	62,102	6.0	26.3
ID	4,754	7,605	8,000	68.3	5.2
WA	15,062	19,228	17,176	14.0	-10.7
Oth Sts ²	42,672	49,828	55,514	30.1	11.4
US	121,080	125,838	142,792	17.9	13.5
Atlantic	12,373	18,086	19,150	54.8	5.9
E N Central	4,485	5,517	4,439	-1.0	-19.5
W N Central	7,781	7,237	7,709	-0.9	6.5
S Central	6,794	6,807	8,120	19.5	19.3
West	89,647	88,191	103,374	15.3	17.2

¹ Revised.

² States not shown when fewer than 3 plants reported or individual plant operations could be disclosed. Percent change shown only when comparable States are included in the calculation.

**Dry Whey, Human: Production by State
and United States, March 2001-2002**

State	Mar 2001	Feb ¹ 2002	Mar 2002	Change From	
				Mar 2001	Feb 2002
	<i>1,000 Pounds</i>	<i>1,000 Pounds</i>	<i>1,000 Pounds</i>	<i>Percent</i>	<i>Percent</i>
CA	12,862	10,705	13,944	8.4	30.3
MN	7,085	6,074	6,750	-4.7	11.1
NY	10,527	9,951	10,917	3.7	9.7
PA	8,757	8,611	9,745	11.3	13.2
WA	6,735	6,553	7,395	9.8	12.8
WI	25,018	22,721	24,920	-0.4	9.7
Oth Sts ²	16,981	15,627	18,011	6.1	15.3
US	87,965	80,242	91,682	4.2	14.3
Atlantic	19,284	18,562	20,662	7.1	11.3
Central	44,709	40,223	45,038	0.7	12.0
West	23,972	21,457	25,982	8.4	21.1

¹ Revised.

² States not shown when fewer than 3 plants reported or individual plant operations could be disclosed. Percent change shown only when comparable States are included in the calculation.

Ice Cream, Hard: Production by State and United States, March 2001-2002

State	Mar 2001	Feb ¹ 2002	Mar 2002	Change From	
				Mar 2001	Feb 2002
	<i>1,000 Gallons</i>	<i>1,000 Gallons</i>	<i>1,000 Gallons</i>	<i>Percent</i>	<i>Percent</i>
CA	12,156	9,337	12,068	-0.7	29.2
FL	1,463	2,000	1,900	29.9	-5.0
IL	3,775	2,596	3,299	-12.6	27.1
IN	6,450	6,717	6,910	7.1	2.9
MD	1,985	1,670	2,042	2.9	22.3
MA	4,136	5,431	6,039	46.0	11.2
MI	1,723	1,805	1,846	7.1	2.3
MN	3,653	3,584	4,378	19.8	22.2
NH	10	7	11	10.0	57.1
NY	2,802	2,300	2,300	-17.9	
NC	1,630	1,489	1,407	-13.7	-5.5
OH	3,160	2,671	2,759	-12.7	3.3
OR	1,005	850	960	-4.5	12.9
PA	3,704	2,998	3,450	-6.9	15.1
SD	2	2	2		
TN	2,055	1,574	2,077	1.1	32.0
TX	4,507	4,035	4,051	-10.1	0.4
UT	1,250	1,162	1,346	7.7	15.8
WA	1,690	1,164	1,219	-27.9	4.7
Oth Sts ²	19,915	19,642	18,628	-6.5	-5.2
US	77,071	71,034	76,692	-0.5	8.0
N Atlantic	13,225	13,098	14,275	7.9	9.0
S Atlantic	6,740	6,545	6,665	-1.1	1.8
E N Central	15,976	14,514	15,645	-2.1	7.8
W N Central	12,395	12,255	12,451	0.5	1.6
S Central	9,818	8,360	9,176	-6.5	9.8
West	18,917	16,262	18,480	-2.3	13.6

¹ Revised.

² States not shown when fewer than 3 plants reported or individual plant operations could be disclosed. Percent change shown only when comparable States are included in the calculation.

**Canned Milk and Dry Milk Products: Manufacturers' Shipments,
Stocks, and Selling Prices, March, 2001-2002**

Product	Mar 2001	Feb 2002 ¹	Mar 2002	Change From	
				Mar 2001	Feb 2002
Manufacturers' Shipments ²					
	<i>1,000 Pounds</i>	<i>1,000 Pounds</i>	<i>1,000 Pounds</i>	<i>Percent</i>	<i>Percent</i>
Nonfat Dry Milk, Human	150,005	133,609	145,557	-3.0	8.9
Manufacturers' Stocks End-of-Month ³					
	<i>1,000 Pounds</i>	<i>1,000 Pounds</i>	<i>1,000 Pounds</i>	<i>Percent</i>	<i>Percent</i>
Canned Evaporated and Condensed Whole Milk	53,453	45,771	46,348	-13.3	1.3
Nonfat Dry Milk, Human	123,481	142,499	144,161	16.7	1.2
Dry Buttermilk, Total	4,360	9,001	9,243	112.0	2.7

¹ Revised.

² For dry products, shipments of bulk goods only.

³ Stocks held by manufacturers at all points and in transit.

Procedures and Reliability: Estimates included in this report are based on data provided each month by manufacturers of these products. In 32 States, the State Departments of Agriculture assist in collection of data, which eliminates duplicate reporting and reduces respondent burden. Data are collected by mail, personal and telephone interviews following the close of each month. There were 1,162 manufacturers that made one or more products in 2001. Each month, reports are generally received from all dairy plants in States with small numbers of plants. In States with large numbers of plants, survey procedures are designed to obtain monthly reports from all large plants and from a sample of small plants. Monthly estimates are based upon returns from about 70 percent of the plants which account for 70 to 90 percent of the total production of major dairy products.

Revision Policy: Monthly estimates are subject to revision the month following the preliminary estimates. Annual estimates are published in the "**Dairy Products**" report published each April which includes any revisions made to current and previous year. In preparing the annual report, an attempt is made to get information from all plants.

The next "Dairy Products" report will be released at 3 p.m. ET on June 3, 2002.

The United States Department of Agriculture (USDA) prohibits discrimination in all its programs on the basis of race, color, national origin, gender, religion, age, disability, political beliefs, sexual orientation, and marital or family status. (Not all prohibited bases apply to all programs.) Persons with disabilities who require alternative means for communication of program information (braille, large print, audiotape, etc.) should contact the USDA's TARGET Center at 202-720-2600 (voice and TDD).

To file a complaint of discrimination, write USDA, Director, Office of Civil Rights, Room 326-W, Whitten Building, 1400 Independence Avenue, SW, Washington, D.C., 20250-9410, or call 202-720-5964 (voice or TDD). USDA is an equal opportunity provider and employer.

ACCESS TO REPORTS!!

For your convenience, there are several ways to obtain NASS reports, data products, and services:

INTERNET ACCESS

All NASS reports are available free of charge on the worldwide Internet. For access, connect to the Internet and go to the NASS Home Page at: <http://www.usda.gov/nass/>. Select "Today's Reports" or Publications and then Reports by Calendar or Publications and then Search, by Title or Subject.

E-MAIL SUBSCRIPTION

There are two options for subscribing via e-mail. All NASS reports are available by subscription free of charge direct to your e-mail address. 1) Starting with the NASS Home Page at <http://www.usda.gov/nass/>, click on **Publications**, then click on the **Subscribe by E-mail** button which takes you to the page describing e-mail delivery of reports. Finally, click on **Go to the Subscription Page** and follow the instructions. 2) If you do NOT have Internet access, send an e-mail message to: usda-reports@usda.mannlib.cornell.edu. In the body of the message type the word: **list**.

AUTOFAX ACCESS

NASSFax service is available for some reports from your fax machine. Please call 202-720-2000, using the handset attached to your fax. Respond to the voice prompts. Document 0411 is a list of available reports.

PRINTED REPORTS OR DATA PRODUCTS

CALL OUR TOLL-FREE ORDER DESK: 800-999-6779 (U.S. and Canada)
Other areas, please call 703-605-6220 FAX: 703-605-6900
(Visa, MasterCard, check, or money order acceptable for payment.)

ASSISTANCE

For **assistance** with general agricultural statistics or further information about NASS or its products or services, contact the **Agricultural Statistics Hotline** at **800-727-9540**, 7:30 a.m. to 4:00 p.m. ET, or e-mail: nass@nass.usda.gov.
