

Released June 3, 2002, by the National Agricultural Statistics Service (NASS), Agricultural Statistics Board, U.S. Department of Agriculture. For information on "Dairy Products" call Kevin Pautler at (202) 720-9168, office hours 7:15 a.m. to 4:00 p.m. ET.

## April 2002 Highlights

**Total cheese** output (excluding cottage cheese) was 698 million pounds, 4.1 percent above April 2001 but 3.0 percent below March 2002

**American type cheese** production totaled 315 million pounds, 8.0 percent above April 2001 but 0.9 percent below March 2002.

**Butter** production was 132 million pounds in April, 21.5 percent above April 2001 and 2.7 percent above March 2002.

**Frozen dessert:** (comparisons with April 2001)

Ice cream, Regular (hard) --- 79.7 million gallons, up 1.5 percent.

Ice cream, Lowfat (total) --- 36.0 million gallons, down 2.6 percent.

Ice cream, Nonfat (hard) --- 1.56 million gallons, unchanged.

Sherbet (hard) --- 5.10 million gallons, up 20.6 percent.

Frozen Yogurt (total) --- 6.81 million gallons, down 2.4 percent.

**Nonfat dry milk for human food:** (compared with April 2001) --- 157 million pounds, up 19.4 percent.

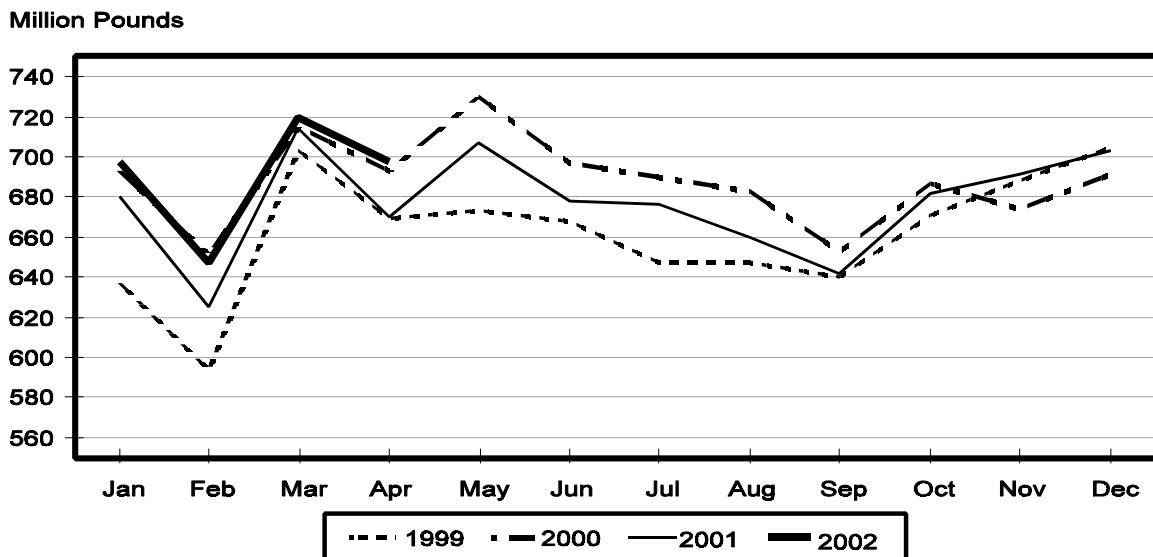
**Dry whey products:** (comparisons with April 2001)

Dry whey, human --- 89.2 million pounds, up 7.0 percent.

Dry whey, animal --- 5.20 million pounds, down 16.4 percent.

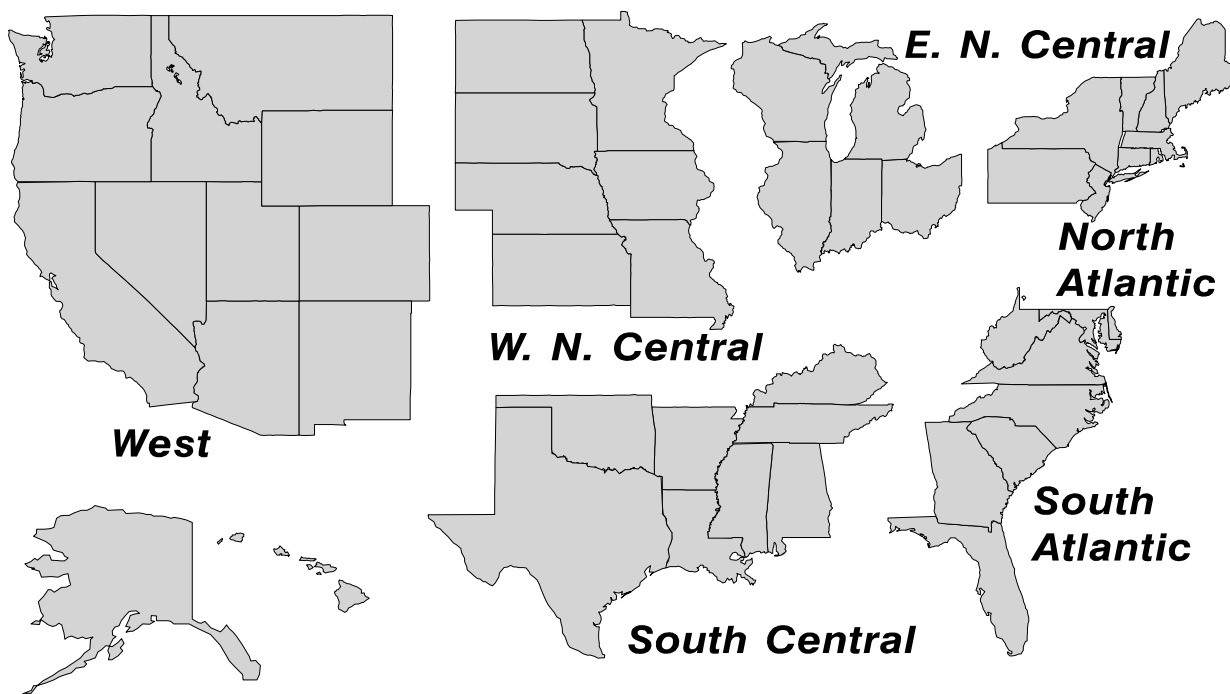
Dry whey, total --- 94.4 million pounds, up 5.4 percent.

## Total Cheese Production United States



## U. S. Geographic Regions Dairy Products

State totals are not published when fewer than 3 firms have reported or one firm comprises more than 60 percent of the State total. If we are not able to publish a region for confidentiality reasons, it will be combined with other regions when possible. For example, if North Atlantic can not be published, then it will be combined with South Atlantic to publish Atlantic. The West North Central and East North Central will be combined, if necessary, to form North Central. In the event that neither could be published, they may be combined with South Central to publish Central. Some tables will have only limited regions shown, therefore the regions may not add to the United States total.



**Dairy Products: Production by Product,  
United States, April, 2001-2002**

Product	Apr 2001	Mar 2002 <sup>1</sup>	Apr 2002	Change From	
				Apr 2001	Mar 2002
	<i>1,000 Pounds</i>	<i>1,000 Pounds</i>	<i>1,000 Pounds</i>	<i>Percent</i>	<i>Percent</i>
Butter	108,975	128,966	132,441	21.5	2.7
Cheese					
American Types <sup>2</sup>	291,905	318,242	315,234	8.0	-0.9
Cheddar	229,129	249,156	247,949	8.2	-0.5
Swiss	21,156	20,395	20,550	-2.9	0.8
Brick and Muenster	7,373	6,602	7,067	-4.2	7.0
Cream and Neufchatel	52,526	54,745	49,563	-5.6	-9.5
Hispanic	8,498	9,223	9,975	17.4	8.2
Mozzarella	215,432	234,689	220,472	2.3	-6.1
Other Italian Types	57,027	58,656	57,422	0.7	-2.1
Total Italian Types	272,459	293,345	277,894	2.0	-5.3
All Other Types	16,304	16,994	17,357	6.5	2.1
Total	670,221	719,546	697,640	4.1	-3.0
Cottage Cheese, Curd <sup>3</sup>	36,774	38,226	36,916	0.4	-3.4
Cottage Cheese, Cream <sup>4</sup>	29,684	31,520	30,431	2.5	-3.5
Cottage Cheese, Lowfat <sup>5</sup>	29,825	32,509	30,356	1.8	-6.6
Canned Evaporated and					
Condensed Whole Milk	38,640	40,266	34,204	-11.5	-15.1
Dry Whole Milk	3,308	1,922	2,467	-25.4	28.4
Nonfat Dry Milk, Human	131,695	147,761	157,258	19.4	6.4
Dry Skim Milk, Animal	379	762	493	30.1	-35.3
Dry Buttermilk	4,684	5,770	5,704	21.8	-1.1
Yogurt, Plain & Flavored	169,229	180,200	177,837	5.1	-1.3
	<i>1,000 Gallons</i>	<i>1,000 Gallons</i>	<i>1,000 Gallons</i>	<i>Percent</i>	<i>Percent</i>
Frozen Products					
Ice Cream, Hard	78,501	76,680	79,656	1.5	3.9
Ice Cream, Lowfat, Hard	7,934	8,315	8,932	12.6	7.4
Ice Cream, Lowfat, Soft	29,040	23,305	27,084	-6.7	16.2
Ice Cream, Lowfat, Total	36,974	31,620	36,016	-2.6	13.9
Ice Cream, Nonfat, Hard	1,558	2,034	1,558	0.0	-23.4
Sherbet, Hard	4,227	4,786	5,096	20.6	6.5
Water and Juice Ices	6,675	6,183	6,449	-3.4	4.3
Frozen Yogurt, Total	6,970	6,900	6,805	-2.4	-1.4
Regular & Lowfat, Hard	1,967	2,409	2,169	10.3	-10.0
Nonfat, Hard	1,164	1,182	1,188	2.1	0.5
Other Frozen Dairy Products	1,016	623	861	-15.3	38.2
Mix for Frozen Products					
Ice Cream Mix	45,205	45,138	48,006	6.2	6.4
Ice Cream, Lowfat, Mix	20,146	17,543	20,003	-0.7	14.0
Ice Cream, Nonfat, Mix	903	1,273	1,006	11.4	-21.0
Sherbet Mix	3,178	3,405	3,608	13.5	6.0
Yogurt Mix	3,750	4,059	4,003	6.7	-1.4

<sup>1</sup> Revised.

<sup>2</sup> Includes Cheddar, Colby, Monterey, and Jack.

<sup>3</sup> Mostly used for processing into cream or lowfat cottage cheese.

<sup>4</sup> Fat content 4 percent or more.

<sup>5</sup> Fat content less than 4 percent.

**Whey and Modified Whey Products: Production, Stocks,  
and Prices, United States, April, 2001-2002**

Product	Apr 2001	Mar 2002 <sup>1</sup>	Apr 2002	Change From	
				Apr 2001	Mar 2002
<b>Production</b>					
	<i>1,000 Pounds</i>	<i>1,000 Pounds</i>	<i>1,000 Pounds</i>	<i>Percent</i>	<i>Percent</i>
Condensed Whey, Solids Content <sup>2</sup>					
Sweet-Type, Human	6,139	7,601	8,151	32.8	7.2
Sweet-Type, Animal	1,055	962	1,166	10.5	21.2
Dry Whey Products					
Dry Whey, Human	83,386	91,817	89,211	7.0	-2.8
Dry Whey, Animal	6,214	4,678	5,198	-16.4	11.1
Dry Whey, Total	89,600	96,495	94,409	5.4	-2.2
Reduced Lactose and Minerals					
Human Food	8,431	8,277	8,566	1.6	3.5
Animal Feed	3,174	3,514	3,515	10.7	0.0
Lactose, Human and Animal	41,779	49,303	47,562	13.8	-3.5
Whey					
Solids in Wet Blends, Animal	3,024	2,704	3,169	4.8	17.2
Protein Concentrate, Human	23,644	26,894	26,205	10.8	-2.6
Protein Concentrate, Animal	3,931	3,348	2,995	-23.8	-10.5
<b>Manufacturers' Stocks End-of-Month <sup>3</sup></b>					
	<i>1,000 Pounds</i>	<i>1,000 Pounds</i>	<i>1,000 Pounds</i>	<i>Percent</i>	<i>Percent</i>
Dry Whey Products					
Dry Whey, Human	29,164	42,567	40,455	38.7	-5.0
Dry Whey, Animal	4,390	1,141	1,524	-65.3	33.6
Reduced Lactose and Minerals					
Human and Animal <sup>4</sup>	5,891	8,283	8,603	46.0	3.9
Lactose, Human and Animal	26,098	32,968	34,353	31.6	4.2
Whey Protein Concentrate, Human	12,459	24,640	24,473	96.4	-0.7
Whey Protein Concentrate, Animal	2,414	1,305	1,531	-36.6	17.3
<b>Manufacturers' Selling Price <sup>5</sup></b>					
	<i>Cents per Pound</i>	<i>Cents per Pound</i>	<i>Cents per Pound</i>	<i>Cents Change</i>	<i>Cents Change</i>
Dry Whey, Animal	21.5	18.4	17.2	-4.3	-1.2

<sup>1</sup> Revised.

<sup>2</sup> Final marketable product only. Does not include quantity used or shipped to another plant for further processing into dry whey or modified whey products.

<sup>3</sup> Stocks held by manufacturers at all points and in transit.

<sup>4</sup> Reduced lactose and minerals stocks combined to avoid disclosure of individual operations.

<sup>5</sup> Prices for bulk goods, f.o.b. plant. Average monthly prices reported by firms.

**Dairy Products: Production by Product and Month,  
United States, 2001-2002 <sup>1</sup>**

Product and Month	By Month			Cumulative		
	2001	2002	Change From 2001	2001	2002	Change From 2001
	<i>1,000 Pounds</i>	<i>1,000 Pounds</i>	<i>Percent</i>	<i>1,000 Pounds</i>	<i>1,000 Pounds</i>	<i>Percent</i>
<b>Total Cheese</b>						
Jan	680,299	697,560	2.5	680,299	697,560	2.5
Feb	625,310	647,091	3.5	1,305,609	1,344,651	3.0
Mar	713,722	719,546	0.8	2,019,331	2,064,197	2.2
Apr	670,221	697,640	4.1	2,689,552	2,761,837	2.7
May	706,790			3,396,342		
Jun	678,517			4,074,859		
Jul	676,018			4,750,877		
Aug	660,033			5,410,910		
Sep	641,785			6,052,695		
Oct	682,080			6,734,775		
Nov	691,229			7,426,004		
Dec	703,090			8,129,094		
<b>American Cheese</b>						
Jan	300,419	315,166	4.9	300,419	315,166	4.9
Feb	270,134	287,383	6.4	570,553	602,549	5.6
Mar	297,097	318,242	7.1	867,650	920,791	6.1
Apr	291,905	315,234	8.0	1,159,555	1,236,025	6.6
May	308,548			1,468,103		
Jun	304,618			1,772,721		
Jul	293,372			2,066,093		
Aug	281,527			2,347,620		
Sep	277,046			2,624,666		
Oct	295,991			2,920,657		
Nov	286,276			3,206,933		
Dec	312,229			3,519,162		
<b>Cheddar Cheese</b>						
Jan	236,611	246,156	4.0	236,611	246,156	4.0
Feb	211,627	224,971	6.3	448,238	471,127	5.1
Mar	233,113	249,156	6.9	681,351	720,283	5.7
Apr	229,129	247,949	8.2	910,480	968,232	6.3
May	244,614			1,155,094		
Jun	239,366			1,394,460		
Jul	230,631			1,625,091		
Aug	216,481			1,841,572		
Sep	216,267			2,057,839		
Oct	230,948			2,288,787		
Nov	217,992			2,506,779		
Dec	239,698			2,746,477		

See footnote(s) at end of table.

--continued

**Dairy Products: Production by Product and Month,  
United States, 2001-2002 <sup>1</sup> (continued)**

Product and Month	By Month			Cumulative		
	2001	2002	Change From 2001	2001	2002	Change From 2001
	<i>1,000 Pounds</i>	<i>1,000 Pounds</i>	<i>Percent</i>	<i>1,000 Pounds</i>	<i>1,000 Pounds</i>	<i>Percent</i>
<b>Italian Cheese</b>						
Jan	284,866	282,491	-0.8	284,866	282,491	-0.8
Feb	268,060	265,977	-0.8	552,926	548,468	-0.8
Mar	302,583	293,345	-3.1	855,509	841,813	-1.6
Apr	272,459	277,894	2.0	1,127,968	1,119,707	-0.7
May	286,039			1,414,007		
Jun	269,665			1,683,672		
Jul	275,857			1,959,529		
Aug	266,736			2,226,265		
Sep	262,616			2,488,881		
Oct	265,763			2,754,644		
Nov	283,112			3,037,756		
Dec	290,516			3,328,272		
<b>Mozzarella Cheese</b>						
Jan	226,475	224,114	-1.0	226,475	224,114	-1.0
Feb	214,507	213,429	-0.5	440,982	437,543	-0.8
Mar	238,805	234,689	-1.7	679,787	672,232	-1.1
Apr	215,432	220,472	2.3	895,219	892,704	-0.3
May	230,249			1,125,468		
Jun	222,013			1,347,481		
Jul	224,953			1,572,434		
Aug	211,184			1,783,618		
Sep	212,654			1,996,272		
Oct	214,476			2,210,748		
Nov	224,558			2,435,306		
Dec	230,443			2,665,749		
<b>Other Italian</b>						
Jan	58,391	58,377		58,391	58,377	
Feb	53,553	52,548	-1.9	111,944	110,925	-0.9
Mar	63,778	58,656	-8.0	175,722	169,581	-3.5
Apr	57,027	57,422	0.7	232,749	227,003	-2.5
May	55,790			288,539		
Jun	47,652			336,191		
Jul	50,904			387,095		
Aug	55,552			442,647		
Sep	49,962			492,609		
Oct	51,287			543,896		
Nov	58,554			602,450		
Dec	60,073			662,523		

See footnote(s) at end of table.

--continued

**Dairy Products: Production by Product and Month,  
United States, 2001-2002 <sup>1</sup> (continued)**

Product and Month	By Month			Cumulative		
	2001	2002	Change From 2001	2001	2002	Change From 2001
	<i>1,000 Pounds</i>	<i>1,000 Pounds</i>	<i>Percent</i>	<i>1,000 Pounds</i>	<i>1,000 Pounds</i>	<i>Percent</i>
<b>Butter</b>						
Jan	127,356	140,687	10.5	127,356	140,687	10.5
Feb	111,809	125,352	12.1	239,165	266,039	11.2
Mar	111,374	128,966	15.8	350,539	395,005	12.7
Apr	108,975	132,441	21.5	459,514	527,446	14.8
May	111,001			570,515		
Jun	86,783			657,298		
Jul	84,210			741,508		
Aug	75,557			817,065		
Sep	86,721			903,786		
Oct	109,911			1,013,697		
Nov	100,079			1,113,776		
Dec	123,025			1,236,801		
<b>Nonfat Dry Milk, Human</b>						
Jan	118,299	118,892	0.5	118,299	118,892	0.5
Feb	119,068	125,838	5.7	237,367	244,730	3.1
Mar	121,080	147,761	22.0	358,447	392,491	9.5
Apr	131,695	157,258	19.4	490,142	549,749	12.2
May	140,423			630,565		
Jun	131,455			762,020		
Jul	117,452			879,472		
Aug	96,127			975,599		
Sep	94,396			1,069,995		
Oct	105,788			1,175,783		
Nov	107,211			1,282,994		
Dec	130,805			1,413,799		
<b>Total Dry Whey <sup>2</sup></b>						
Jan	88,994	90,205	1.4	88,994	90,205	1.4
Feb	84,053	85,878	2.2	173,047	176,083	1.8
Mar	93,241	96,495	3.5	266,288	272,578	2.4
Apr	89,600	94,409	5.4	355,888	366,987	3.1
May	94,120			450,008		
Jun	91,432			541,440		
Jul	92,044			633,484		
Aug	83,119			716,603		
Sep	76,322			792,925		
Oct	79,617			872,542		
Nov	82,295			954,837		
Dec	90,955			1,045,792		

See footnote(s) at end of table.

--continued

**Dairy Products: Production by Product and Month,  
United States, 2001-2002 <sup>1</sup> (continued)**

Product and Month	By Month			Cumulative		
	2001	2002	Change From 2001	2001	2002	Change From 2001
	<i>1,000 Pounds</i>	<i>1,000 Pounds</i>	<i>Percent</i>	<i>1,000 Pounds</i>	<i>1,000 Pounds</i>	<i>Percent</i>
<b>Cream Cottage Cheese</b>						
Jan	31,088	29,765	-4.3	31,088	29,765	-4.3
Feb	28,137	28,788	2.3	59,225	58,553	-1.1
Mar	32,915	31,520	-4.2	92,140	90,073	-2.2
Apr	29,684	30,431	2.5	121,824	120,504	-1.1
May	33,883			155,707		
Jun	31,283			186,990		
Jul	32,521			219,511		
Aug	33,575			253,086		
Sep	29,825			282,911		
Oct	31,324			314,235		
Nov	29,778			344,013		
Dec	27,512			371,525		
<b>Lowfat Cottage Cheese</b>						
Jan	30,262	29,609	-2.2	30,262	29,609	-2.2
Feb	28,858	30,006	4.0	59,120	59,615	0.8
Mar	32,994	32,509	-1.5	92,114	92,124	
Apr	29,825	30,356	1.8	121,939	122,480	0.4
May	35,011			156,950		
Jun	30,705			187,655		
Jul	31,387			219,042		
Aug	35,659			254,701		
Sep	29,764			284,465		
Oct	31,192			315,657		
Nov	28,402			344,059		
Dec	26,825			370,884		
	<i>1,000 Gallons</i>	<i>1,000 Gallons</i>	<i>Percent</i>	<i>1,000 Gallons</i>	<i>1,000 Gallons</i>	<i>Percent</i>
<b>Ice Cream, Hard</b>						
Jan	67,446	70,004	3.8	67,446	70,004	3.8
Feb	67,583	71,034	5.1	135,029	141,038	4.5
Mar	77,071	76,680	-0.5	212,100	217,718	2.6
Apr	78,501	79,656	1.5	290,601	297,374	2.3
May	80,467			371,068		
Jun	84,752			455,820		
Jul	82,043			537,863		
Aug	79,827			617,690		
Sep	70,197			687,887		
Oct	67,595			755,482		
Nov	59,123			814,605		
Dec	54,548			869,153		

See footnote(s) at end of table.

--continued



**Dairy Products: Production by Product and Month,  
United States, 2001-2002 <sup>1</sup> (continued)**

Product and Month	By Month			Cumulative		
	2001	2002	Change From 2001	2001	2002	Change From 2001
	<i>1,000 Gallons</i>	<i>1,000 Gallons</i>	<i>Percent</i>	<i>1,000 Gallons</i>	<i>1,000 Gallons</i>	<i>Percent</i>
<b>Ice Cream, Lowfat</b>						
Jan	26,825	22,119	-17.5	26,825	22,119	-17.5
Feb	27,510	24,976	-9.2	54,335	47,095	-13.3
Mar	35,206	31,620	-10.2	89,541	78,715	-12.1
Apr	36,974	36,016	-2.6	126,515	114,731	-9.3
May	41,675			168,190		
Jun	43,893			212,083		
Jul	41,495			253,578		
Aug	39,978			293,556		
Sep	31,511			325,067		
Oct	30,776			355,843		
Nov	25,239			381,082		
Dec	25,664			406,746		
<b>Ice Cream, NF, Hard</b>						
Jan	1,369	2,074	51.5	1,369	2,074	51.5
Feb	1,451	1,610	11.0	2,820	3,684	30.6
Mar	1,712	2,034	18.8	4,532	5,718	26.2
Apr	1,558	1,558		6,090	7,276	19.5
May	1,789			7,879		
Jun	2,082			9,961		
Jul	1,655			11,616		
Aug	1,835			13,451		
Sep	1,694			15,145		
Oct	1,490			16,635		
Nov	1,333			17,968		
Dec	1,204			19,172		
<b>Sherbet, Hard</b>						
Jan	3,552	3,796	6.9	3,552	3,796	6.9
Feb	3,858	4,050	5.0	7,410	7,846	5.9
Mar	4,494	4,786	6.5	11,904	12,632	6.1
Apr	4,227	5,096	20.6	16,131	17,728	9.9
May	5,150			21,281		
Jun	5,310			26,591		
Jul	5,037			31,628		
Aug	4,654			36,282		
Sep	3,731			40,013		
Oct	3,575			43,588		
Nov	3,010			46,598		
Dec	2,870			49,468		

See footnote(s) at end of table.

--continued

**Dairy Products: Production by Product and Month,  
United States, 2001-2002<sup>1</sup> (continued)**

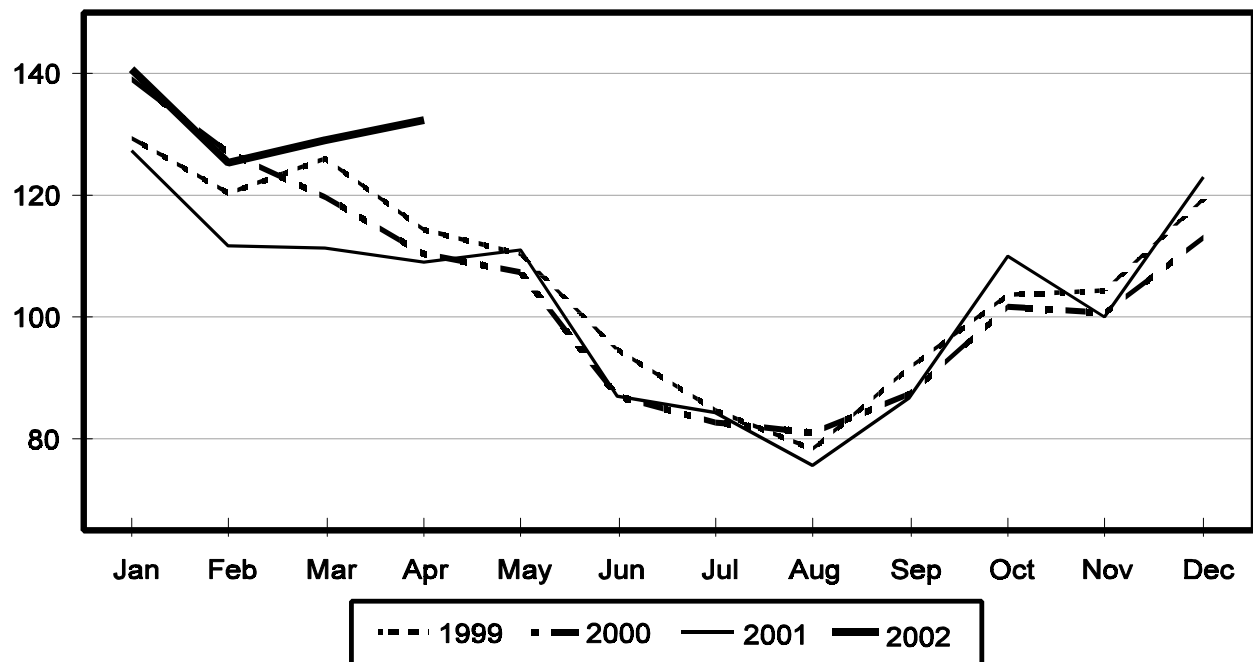
Product and Month	By Month			Cumulative		
	2001	2002	Change From 2001	2001	2002	Change From 2001
	<i>1,000 Gallons</i>	<i>1,000 Gallons</i>	<i>Percent</i>	<i>1,000 Gallons</i>	<i>1,000 Gallons</i>	<i>Percent</i>
Frozen Yogurt						
Jan	6,516	5,976	-8.3	6,516	5,976	-8.3
Feb	5,939	6,348	6.9	12,455	12,324	-1.1
Mar	7,388	6,900	-6.6	19,843	19,224	-3.1
Apr	6,970	6,805	-2.4	26,813	26,029	-2.9
May	7,886			34,699		
Jun	7,755			42,454		
Jul	7,370			49,824		
Aug	8,067			57,891		
Sep	5,895			63,786		
Oct	5,887			69,673		
Nov	5,329			75,002		
Dec	4,597			79,599		

<sup>1</sup> March 2002 data revised.

<sup>2</sup> Excludes all modified dry whey products.

## Total Butter Production United States

Million Pounds



**Total Cheese, Excluding Cottage Cheese: Production by  
State and United States, April 2001-2002**

State	Apr 2001	Mar <sup>1</sup> 2002	Apr 2002	Change From	
				Apr 2001	Mar 2002
	<i>1,000 Pounds</i>	<i>1,000 Pounds</i>	<i>1,000 Pounds</i>	<i>Percent</i>	<i>Percent</i>
CA	135,344	142,093	138,878	2.6	-2.3
ID	47,443	50,991	49,325	4.0	-3.3
IL	8,361	7,510	7,434	-11.1	-1.0
IA	23,434	24,714	23,886	1.9	-3.4
MA	88	84	76	-13.6	-9.5
MN	50,085	54,165	52,368	4.6	-3.3
MO	7,550	8,069	6,934	-8.2	-14.1
NY	57,027	64,064	57,792	1.3	-9.8
OH	12,021	13,499	13,697	13.9	1.5
PA	30,143	31,719	33,767	12.0	6.5
SD	12,022	13,307	12,708	5.7	-4.5
UT	5,875	5,153	6,215	5.8	20.6
WA	12,411	13,240	12,666	2.1	-4.3
WI	176,080	185,760	183,145	4.0	-1.4
Oth Sts <sup>2</sup>	92,337	105,178	98,749	6.9	-6.1
US	670,221	719,546	697,640	4.1	-3.0
N Atlantic	102,799	112,524	106,451	3.6	-5.4
S Atlantic	4,143	3,351	4,167	0.6	24.4
E N Central	208,802	221,103	218,266	4.5	-1.3
W N Central	101,100	110,219	104,617	3.5	-5.1
S Central	4,261	5,556	4,684	9.9	-15.7
West	249,116	266,793	259,455	4.2	-2.8

<sup>1</sup> Revised.

<sup>2</sup> States not shown when fewer than 3 plants reported or individual plant operations could be disclosed. Percent change shown only when comparable States are included in the calculation.

**American Cheese: Production by State and United States, April 2001-2002**

State	Apr 2001	Mar <sup>1</sup> 2002	Apr 2002	Change From	
				Apr 2001	Mar 2002
	<i>1,000 Pounds</i>	<i>1,000 Pounds</i>	<i>1,000 Pounds</i>	<i>Percent</i>	<i>Percent</i>
CA	59,277	66,682	64,347	8.6	-3.5
ID	39,107	40,340	41,735	6.7	3.5
IA	11,417	11,917	11,858	3.9	-0.5
MN	46,118	51,868	50,174	8.8	-3.3
NY	8,826	9,140	9,003	2.0	-1.5
OH	1,863	2,981	3,449	85.1	15.7
OR	5,190	7,943	6,959	34.1	-12.4
SD	6,390	6,687	6,308	-1.3	-5.7
WA	11,980	13,043	12,556	4.8	-3.7
WI	69,192	73,220	73,700	6.5	0.7
Oth Sts <sup>2</sup>	32,545	34,421	35,145	8.0	2.1
US	291,905	318,242	315,234	8.0	-0.9
Atlantic	15,018	14,833	14,948	-0.5	0.8
E N Central	72,107	77,399	78,460	8.8	1.4
W N Central	65,377	72,214	70,220	7.4	-2.8
S Central	3,965	5,229	4,361	10.0	-16.6
West	135,438	148,567	147,245	8.7	-0.9

<sup>1</sup> Revised.

<sup>2</sup> States not shown when fewer than 3 plants reported or individual plant operations could be disclosed. Percent change shown only when comparable States are included in the calculation.

**Cheddar Cheese: Production by State and United States, April 2001-2002**

State	Apr 2001	Mar <sup>1</sup> 2002	Apr 2002	Change From	
				Apr 2001	Mar 2002
	<i>1,000 Pounds</i>	<i>1,000 Pounds</i>	<i>1,000 Pounds</i>	<i>Percent</i>	<i>Percent</i>
CA	44,516	49,301	47,295	6.2	-4.1
ID	19,175	19,631	20,210	5.4	2.9
MN	42,798	49,662	47,774	11.6	-3.8
NY	8,725	9,030	8,931	2.4	-1.1
WI	56,141	59,100	60,300	7.4	2.0
Oth Sts <sup>2</sup>	57,774	62,432	63,439	9.8	1.6
US	229,129	249,156	247,949	8.2	-0.5
Atlantic	14,434	14,489	14,672	1.6	1.3
E N Cen	57,724	61,336	63,063	9.2	2.8
W N Cen	56,002	61,942	61,138	9.2	-1.3
S Cen	3,954	5,224	4,345	9.9	-16.8
West	97,015	106,165	104,731	8.0	-1.4

<sup>1</sup> Revised.

<sup>2</sup> States not shown when fewer than 3 plants reported or individual plant operations could be disclosed. Percent change shown only when comparable States are included in the calculation.

**Mozzarella Cheese: Production by State and United States, April 2001-2002**

State	Apr 2001	Mar <sup>1</sup> 2002	Apr 2002	Change From	
				Apr 2001	Mar 2002
	<i>1,000 Pounds</i>	<i>1,000 Pounds</i>	<i>1,000 Pounds</i>	<i>Percent</i>	<i>Percent</i>
CA	56,106	56,134	54,926	-2.1	-2.2
NY	21,386	18,251	17,203	-19.6	-5.7
WI	57,974	68,100	63,200	9.0	-7.2
Oth Sts <sup>2</sup>	79,966	92,204	85,143	6.5	-7.7
US	215,432	234,689	220,472	2.3	-6.1
Atlantic	46,287	44,930	43,745	-5.5	-2.6
E N Central	69,466	81,449	75,968	9.4	-6.7
West	84,561	91,158	85,528	1.1	-6.2

<sup>1</sup> Revised.

<sup>2</sup> States not shown when fewer than 3 plants reported or individual plant operations could be disclosed. Percent change shown only when comparable States are included in the calculation.

**Butter: Production by State and United States, April 2001-2002**

State	Apr 2001	Mar <sup>1</sup> 2002	Apr 2002	Change From	
				Apr 2001	Mar 2002
	<i>1,000 Pounds</i>	<i>1,000 Pounds</i>	<i>1,000 Pounds</i>	<i>Percent</i>	<i>Percent</i>
CA	28,769	35,826	35,024	21.7	-2.2
NY	2,464	2,584	2,799	13.6	8.3
PA	6,537	8,418	8,856	35.5	5.2
WA	7,676	9,668	9,298	21.1	-3.8
WI	26,970	31,800	35,200	30.5	10.7
Oth Sts <sup>2</sup>	36,559	40,670	41,264	12.9	1.5
US	108,975	128,966	132,441	21.5	2.7
N Atlantic	13,248	15,610	16,006	20.8	2.5
E N Central	30,527	36,156	39,076	28.0	8.1
W N Central	10,390	11,827	12,037	15.9	1.8
West	43,109	50,903	49,704	15.3	-2.4

<sup>1</sup> Revised.

<sup>2</sup> States not shown when fewer than 3 plants reported or individual plant operations could be disclosed. Percent change shown only when comparable States are included in the calculation.

**Nonfat Dry Milk, Human: Production by State  
and United States, April 2001-2002**

State	Apr 2001	Mar <sup>1</sup> 2002	Apr 2002	Change From	
				Apr 2001	Mar 2002
	<i>1,000 Pounds</i>	<i>1,000 Pounds</i>	<i>1,000 Pounds</i>	<i>Percent</i>	<i>Percent</i>
CA	60,317	66,090	68,155	13.0	3.1
ID	6,083	8,000	9,099	49.6	13.7
WA	15,873	17,176	16,801	5.8	-2.2
Oth Sts <sup>2</sup>	49,422	56,495	63,203	27.9	11.9
US	131,695	147,761	157,258	19.4	6.4
Atlantic	14,524	20,041	23,854	64.2	19.0
E N Central	6,013	4,439	5,283	-12.1	19.0
W N Central	7,435	7,799	7,787	4.7	-0.2
S Central	9,656	8,120	8,990	-6.9	10.7
West	94,067	107,362	111,344	18.4	3.7

<sup>1</sup> Revised.

<sup>2</sup> States not shown when fewer than 3 plants reported or individual plant operations could be disclosed. Percent change shown only when comparable States are included in the calculation.

**Dry Whey, Human: Production by State  
and United States, April 2001-2002**

State	Apr 2001	Mar <sup>1</sup> 2002	Apr 2002	Change From	
				Apr 2001	Mar 2002
	<i>1,000 Pounds</i>	<i>1,000 Pounds</i>	<i>1,000 Pounds</i>	<i>Percent</i>	<i>Percent</i>
CA	12,495	13,195	11,706	-6.3	-11.3
MN	6,769	7,241	7,078	4.6	-2.3
NY	10,421	10,917	10,573	1.5	-3.2
PA	8,498	9,745	9,903	16.5	1.6
WA	7,068	7,395	8,183	15.8	10.7
WI	22,768	25,309	25,600	12.4	1.1
Oth Sts <sup>2</sup>	15,367	18,015	16,168	5.2	-10.3
US	83,386	91,817	89,211	7.0	-2.8
Atlantic	18,919	20,662	20,476	8.2	-0.9
Central	40,730	45,922	44,090	8.2	-4.0
West	23,737	25,233	24,645	3.8	-2.3

<sup>1</sup> Revised.

<sup>2</sup> States not shown when fewer than 3 plants reported or individual plant operations could be disclosed. Percent change shown only when comparable States are included in the calculation.

**Ice Cream, Hard: Production by State and United States, April 2001-2002**

State	Apr 2001	Mar <sup>1</sup> 2002	Apr 2002	Change From	
				Apr 2001	Mar 2002
	<i>1,000 Gallons</i>	<i>1,000 Gallons</i>	<i>1,000 Gallons</i>	<i>Percent</i>	<i>Percent</i>
CA	11,449	12,056	10,494	-8.3	-13.0
FL	1,554	1,900	1,800	15.8	-5.3
IL	3,235	3,299	2,736	-15.4	-17.1
IN	7,218	6,910	7,704	6.7	11.5
MD	1,922	2,042	1,923	0.1	-5.8
MA	5,899	6,023	6,651	12.7	10.4
MI	2,314	1,846	1,845	-20.3	-0.1
MN	3,730	4,378	3,494	-6.3	-20.2
NH	11	11	12	9.1	9.1
NY	3,264	2,300	3,000	-8.1	30.4
NC	1,435	1,407	1,604	11.8	14.0
OH	2,680	2,759	2,745	2.4	-0.5
OR	1,105	960	1,090	-1.4	13.5
PA	3,582	3,450	3,481	-2.8	0.9
SD	3	2	3		50.0
TN	1,662	2,077	1,677	0.9	-19.3
TX	4,144	4,051	4,239	2.3	4.6
UT	1,380	1,346	1,205	-12.7	-10.5
WA	1,360	1,219	1,215	-10.7	-0.3
Oth Sts <sup>2</sup>	20,554	18,644	22,738	10.6	22.0
US	78,501	76,680	79,656	1.5	3.9
N Atlantic	15,589	14,259	16,110	3.3	13.0
S Atlantic	6,354	6,665	6,647	4.6	-0.3
E N Central	16,278	15,641	15,923	-2.2	1.8
W N Central	12,545	12,471	13,974	11.4	12.1
S Central	9,100	9,176	9,263	1.8	0.9
West	18,635	18,468	17,739	-4.8	-3.9

<sup>1</sup> Revised.

<sup>2</sup> States not shown when fewer than 3 plants reported or individual plant operations could be disclosed. Percent change shown only when comparable States are included in the calculation.

**Canned Milk and Dry Milk Products: Manufacturers' Shipments,  
Stocks, and Selling Prices, April, 2001-2002**

Product	Apr 2001	Mar 2002 <sup>1</sup>	Apr 2002	Change From	
				Apr 2001	Mar 2002
	<b>Manufacturers' Shipments <sup>2</sup></b>				
	<i>1,000 Pounds</i>	<i>1,000 Pounds</i>	<i>1,000 Pounds</i>	<i>Percent</i>	<i>Percent</i>
Nonfat Dry Milk, Human	150,714	154,664	176,544	17.1	14.1
	<b>Manufacturers' Stocks End-of-Month <sup>3</sup></b>				
	<i>1,000 Pounds</i>	<i>1,000 Pounds</i>	<i>1,000 Pounds</i>	<i>Percent</i>	<i>Percent</i>
Canned Evaporated and Condensed Whole Milk	58,969	43,642	51,089	-13.4	17.1
Nonfat Dry Milk, Human	127,114	157,799	155,286	22.2	-1.6
Dry Buttermilk, Total	3,735	10,554	12,285	228.9	16.4

<sup>1</sup> Revised.

<sup>2</sup> For dry products, shipments of bulk goods only.

<sup>3</sup> Stocks held by manufacturers at all points and in transit.



**Procedures and Reliability:** Estimates included in this report are based on data provided each month by manufacturers of these products. In 32 States, the State Departments of Agriculture assist in collection of data, which eliminates duplicate reporting and reduces respondent burden. Data are collected by mail, personal and telephone interviews following the close of each month. There were 1,165 manufacturers that made one or more products in 2001. Each month, reports are generally received from all dairy plants in States with small numbers of plants. In States with large numbers of plants, survey procedures are designed to obtain monthly reports from all large plants and from a sample of small plants. Monthly estimates are based upon returns from about 70 percent of the plants which account for 70 to 90 percent of the total production of major dairy products.

**Revision Policy:** Monthly estimates are subject to revision the month following the preliminary estimates. Annual estimates are published in the "**Dairy Products**" report published each April which includes any revisions made to current and previous year. In preparing the annual report, an attempt is made to get information from all plants.

The next "Dairy Products" report will be released at 3 p.m. ET on July 3, 2002.

The United States Department of Agriculture (USDA) prohibits discrimination in all its programs on the basis of race, color, national origin, gender, religion, age, disability, political beliefs, sexual orientation, and marital or family status. (Not all prohibited bases apply to all programs.) Persons with disabilities who require alternative means for communication of program information (braille, large print, audiotape, etc.) should contact the USDA's TARGET Center at 202-720-2600 (voice and TDD).

To file a complaint of discrimination, write USDA, Director, Office of Civil Rights, Room 326-W, Whitten Building, 1400 Independence Avenue, SW, Washington, D.C., 20250-9410, or call 202-720-5964 (voice or TDD). USDA is an equal opportunity provider and employer.

## **ACCESS TO REPORTS!!**

---

For your convenience, there are several ways to obtain NASS reports, data products, and services:

### **INTERNET ACCESS**

All NASS reports are available free of charge on the worldwide Internet. For access, connect to the Internet and go to the NASS Home Page at: <http://www.usda.gov/nass/>. Select "Today's Reports" or Publications and then Reports by Calendar or Publications and then Search, by Title or Subject.

### **E-MAIL SUBSCRIPTION**

There are two options for subscribing via e-mail. All NASS reports are available by subscription free of charge direct to your e-mail address. 1) Starting with the NASS Home Page at <http://www.usda.gov/nass/>, click on **Publications**, then click on the **Subscribe by E-mail** button which takes you to the page describing e-mail delivery of reports. Finally, click on **Go to the Subscription Page** and follow the instructions. 2) If you do NOT have Internet access, send an e-mail message to: [usda-reports@usda.mannlib.cornell.edu](mailto:usda-reports@usda.mannlib.cornell.edu). In the body of the message type the word: **list**.

### **AUTOFAX ACCESS**

NASSFax service is available for some reports from your fax machine. Please call 202-720-2000, using the handset attached to your fax. Respond to the voice prompts. Document 0411 is a list of available reports.

-----  
**PRINTED REPORTS OR DATA PRODUCTS**

**CALL OUR TOLL-FREE ORDER DESK: 800-999-6779 (U.S. and Canada)**  
**Other areas, please call 703-605-6220      FAX: 703-605-6900**  
**(Visa, MasterCard, check, or money order acceptable for payment.)**  
-----

### **ASSISTANCE**

For **assistance** with general agricultural statistics or further information about NASS or its products or services, contact the **Agricultural Statistics Hotline** at **800-727-9540**, 7:30 a.m. to 4:00 p.m. ET, or e-mail: [nass@nass.usda.gov](mailto:nass@nass.usda.gov).

---