

Released July 3, 2002, by the National Agricultural Statistics Service (NASS), Agricultural Statistics Board, U.S. Department of Agriculture. For information on "Dairy Products" call Kevin Pautler at (202) 720-9168, office hours 6:45 a.m. to 3:30 p.m. ET.

May 2002 Highlights

Total cheese output (excluding cottage cheese) was 724 million pounds, 2.4 percent above May 2001 and 3.5 percent above April 2002

American type cheese production totaled 327 million pounds, 6.1 percent above May 2001 and 3.3 percent above April 2002.

Butter production was 127 million pounds in May, 14.0 percent above May 2001 but 4.4 percent below April 2002.

Frozen dessert: (comparisons with May 2001)

Ice cream, Regular (hard) --- 76.9 million gallons, down 4.4 percent.

Ice cream, Lowfat (total) --- 38.9 million gallons, down 6.6 percent.

Ice cream, Nonfat (hard) --- 1.53 million gallons, down 14.3 percent.

Sherbet (hard) --- 5.42 million gallons, up 5.2 percent.

Frozen Yogurt (total) --- 7.41 million gallons, down 6.0 percent.

Nonfat dry milk for human food: (compared with May 2001) --- 158 million pounds, up 12.6 percent.

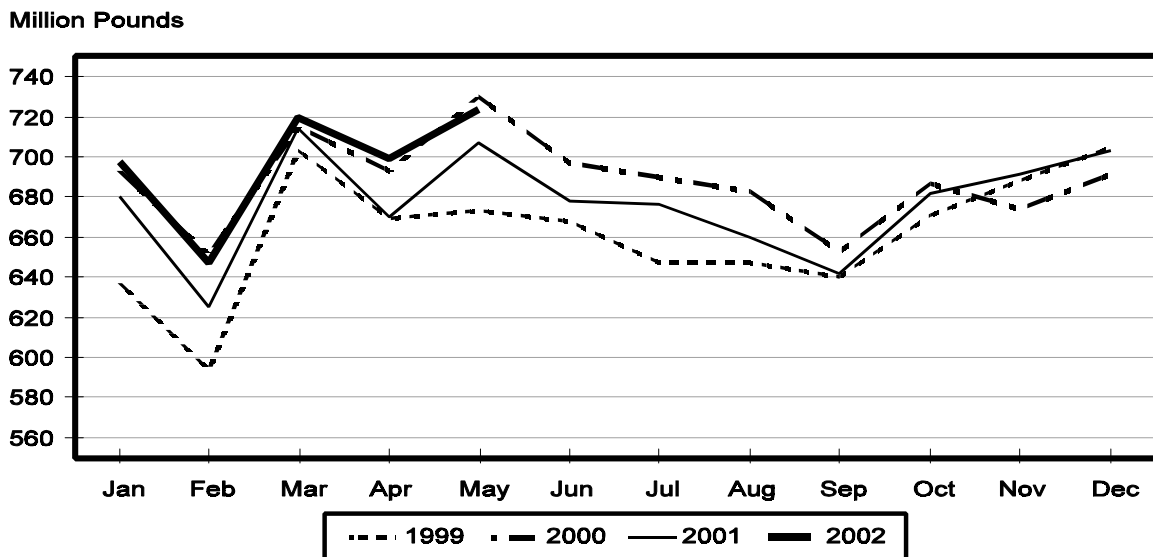
Dry whey products: (comparisons with May 2001)

Dry whey, human --- 94.3 million pounds, up 7.6 percent.

Dry whey, animal --- 5.46 million pounds, down 15.2 percent.

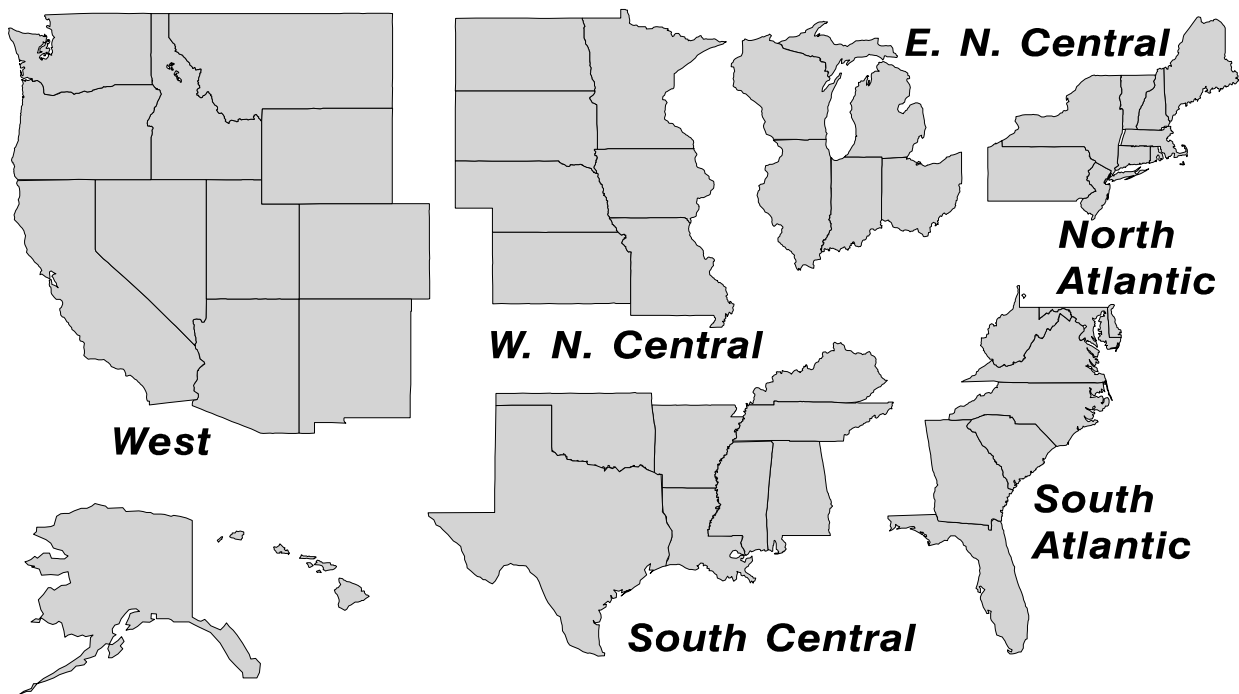
Dry whey, total --- 99.8 million pounds, up 6.0 percent.

Total Cheese Production United States



U. S. Geographic Regions Dairy Products

State totals are not published when fewer than 3 firms have reported or one firm comprises more than 60 percent of the State total. If we are not able to publish a region for confidentiality reasons, it will be combined with other regions when possible. For example, if North Atlantic can not be published, then it will be combined with South Atlantic to publish Atlantic. The West North Central and East North Central will be combined, if necessary, to form North Central. In the event that neither could be published, they may be combined with South Central to publish Central. Some tables will have only limited regions shown, therefore the regions may not add to the United States total.



**Dairy Products: Production by Product,
United States, May, 2001-2002**

Product	May 2001	Apr 2002 ¹	May 2002	Change From	
				May 2001	Apr 2002
	<i>1,000 Pounds</i>	<i>1,000 Pounds</i>	<i>1,000 Pounds</i>	<i>Percent</i>	<i>Percent</i>
Butter	111,001	132,406	126,519	14.0	-4.4
Cheese					
American Types ²	308,548	316,800	327,361	6.1	3.3
Cheddar	244,614	249,284	256,203	4.7	2.8
Swiss	22,411	20,593	21,408	-4.5	4.0
Brick and Muenster	8,136	7,069	7,728	-5.0	9.3
Cream and Neufchatel	55,118	49,593	50,901	-7.7	2.6
Hispanic	8,727	9,976	10,197	16.8	2.2
Mozzarella	230,249	220,483	231,392	0.5	4.9
Other Italian Types	55,790	57,429	56,818	1.8	-1.1
Total Italian Types	286,039	277,912	288,210	0.8	3.7
All Other Types	17,811	17,357	17,841	0.2	2.8
Total	706,790	699,300	723,646	2.4	3.5
Cottage Cheese, Curd ³	41,981	37,093	39,966	-4.8	7.7
Cottage Cheese, Cream ⁴	33,883	30,502	32,622	-3.7	7.0
Cottage Cheese, Lowfat ⁵	35,011	30,524	34,290	-2.1	12.3
Canned Evaporated and					
Condensed Whole Milk	34,083	36,778	37,175	9.1	1.1
Dry Whole Milk	2,991	2,376	3,827	28.0	61.1
Nonfat Dry Milk, Human	140,423	158,291	158,062	12.6	-0.1
Dry Skim Milk, Animal	494	480	708	43.3	47.5
Dry Buttermilk	5,123	5,729	5,635	10.0	-1.6
Yogurt, Plain & Flavored	186,246	178,122	182,563	-2.0	2.5
	<i>1,000 Gallons</i>	<i>1,000 Gallons</i>	<i>1,000 Gallons</i>	<i>Percent</i>	<i>Percent</i>
Frozen Products					
Ice Cream, Hard	80,467	80,214	76,936	-4.4	-4.1
Ice Cream, Lowfat, Hard	8,397	8,922	10,139	20.7	13.6
Ice Cream, Lowfat, Soft	33,278	27,138	28,785	-13.5	6.1
Ice Cream, Lowfat, Total	41,675	36,060	38,924	-6.6	7.9
Ice Cream, Nonfat, Hard	1,789	1,561	1,534	-14.3	-1.7
Sherbet, Hard	5,150	5,127	5,417	5.2	5.7
Water and Juice Ices	6,719	6,532	6,584	-2.0	0.8
Frozen Yogurt, Total	7,886	6,878	7,410	-6.0	7.7
Regular & Lowfat, Hard	2,403	2,221	2,457	2.2	10.6
Nonfat, Hard	1,320	1,181	1,061	-19.6	-10.2
Other Frozen Dairy					
Products	1,064	856	929	-12.7	8.5
Mix for Frozen Products					
Ice Cream Mix	46,448	47,198	45,775	-1.4	-3.0
Ice Cream, Lowfat, Mix	22,839	20,028	21,599	-5.4	7.8
Ice Cream, Nonfat, Mix	1,097	1,013	1,017	-7.3	0.4
Sherbet Mix	3,762	3,599	3,788	0.7	5.3
Yogurt Mix	4,226	4,046	4,359	3.1	7.7

¹ Revised.

² Includes Cheddar, Colby, Monterey, and Jack.

³ Mostly used for processing into cream or lowfat cottage cheese.

⁴ Fat content 4 percent or more.

⁵ Fat content less than 4 percent.

**Whey and Modified Whey Products: Production, Stocks,
and Prices, United States, May, 2001-2002**

Product	May 2001	Apr 2002 ¹	May 2002	Change From	
				May 2001	Apr 2002
Production					
	<i>1,000 Pounds</i>	<i>1,000 Pounds</i>	<i>1,000 Pounds</i>	<i>Percent</i>	<i>Percent</i>
Condensed Whey, Solids Content ²					
Sweet-Type, Human	7,718	8,213	8,102	5.0	-1.4
Sweet-Type, Animal	885	1,166	1,059	19.7	-9.2
Dry Whey Products					
Dry Whey, Human	87,676	88,798	94,327	7.6	6.2
Dry Whey, Animal	6,444	5,183	5,463	-15.2	5.4
Dry Whey, Total	94,120	93,981	99,790	6.0	6.2
Reduced Lactose and Minerals					
Human Food	9,421	8,926	9,541	1.3	6.9
Animal Feed	3,521	3,521	3,735	6.1	6.1
Lactose, Human and Animal	48,421	48,410	46,776	-3.4	-3.4
Whey					
Solids in Wet Blends, Animal	4,429	3,169	2,709	-38.8	-14.5
Protein Concentrate, Human	24,375	26,325	26,935	10.5	2.3
Protein Concentrate, Animal	4,133	2,995	3,208	-22.4	7.1
Manufacturers' Stocks End-of-Month ³					
	<i>1,000 Pounds</i>	<i>1,000 Pounds</i>	<i>1,000 Pounds</i>	<i>Percent</i>	<i>Percent</i>
Dry Whey Products					
Dry Whey, Human	26,946	39,374	35,463	31.6	-9.9
Dry Whey, Animal	5,068	1,651	1,753	-65.4	6.2
Reduced Lactose and Minerals					
Human and Animal ⁴	6,064	8,603	9,875	62.8	14.8
Lactose, Human and Animal	24,575	46,951	44,600	81.5	-5.0
Whey Protein Concentrate, Human	12,679	24,347	22,173	74.9	-8.9
Whey Protein Concentrate, Animal	2,011	1,531	1,562	-22.3	2.0
Manufacturers' Selling Price ⁵					
	<i>Cents per Pound</i>	<i>Cents per Pound</i>	<i>Cents per Pound</i>	<i>Cents Change</i>	<i>Cents Change</i>
Dry Whey, Animal	24.0	17.7	15.8	-8.2	-1.9

¹ Revised.

² Final marketable product only. Does not include quantity used or shipped to another plant for further processing into dry whey or modified whey products.

³ Stocks held by manufacturers at all points and in transit.

⁴ Reduced lactose and minerals stocks combined to avoid disclosure of individual operations.

⁵ Prices for bulk goods, f.o.b. plant. Average monthly prices reported by firms.

**Dairy Products: Production by Product and Month,
United States, 2001-2002 ¹**

Product and Month	By Month			Cumulative		
	2001	2002	Change From 2001	2001	2002	Change From 2001
	<i>1,000 Pounds</i>	<i>1,000 Pounds</i>	<i>Percent</i>	<i>1,000 Pounds</i>	<i>1,000 Pounds</i>	<i>Percent</i>
Total Cheese						
Jan	680,299	697,560	2.5	680,299	697,560	2.5
Feb	625,310	647,091	3.5	1,305,609	1,344,651	3.0
Mar	713,722	719,546	0.8	2,019,331	2,064,197	2.2
Apr	670,221	699,300	4.3	2,689,552	2,763,497	2.7
May	706,790	723,646	2.4	3,396,342	3,487,143	2.7
Jun	678,517			4,074,859		
Jul	676,018			4,750,877		
Aug	660,033			5,410,910		
Sep	641,785			6,052,695		
Oct	682,080			6,734,775		
Nov	691,229			7,426,004		
Dec	703,090			8,129,094		
American Cheese						
Jan	300,419	315,166	4.9	300,419	315,166	4.9
Feb	270,134	287,383	6.4	570,553	602,549	5.6
Mar	297,097	318,242	7.1	867,650	920,791	6.1
Apr	291,905	316,800	8.5	1,159,555	1,237,591	6.7
May	308,548	327,361	6.1	1,468,103	1,564,952	6.6
Jun	304,618			1,772,721		
Jul	293,372			2,066,093		
Aug	281,527			2,347,620		
Sep	277,046			2,624,666		
Oct	295,991			2,920,657		
Nov	286,276			3,206,933		
Dec	312,229			3,519,162		
Cheddar Cheese						
Jan	236,611	246,156	4.0	236,611	246,156	4.0
Feb	211,627	224,971	6.3	448,238	471,127	5.1
Mar	233,113	249,156	6.9	681,351	720,283	5.7
Apr	229,129	249,284	8.8	910,480	969,567	6.5
May	244,614	256,203	4.7	1,155,094	1,225,770	6.1
Jun	239,366			1,394,460		
Jul	230,631			1,625,091		
Aug	216,481			1,841,572		
Sep	216,267			2,057,839		
Oct	230,948			2,288,787		
Nov	217,992			2,506,779		
Dec	239,698			2,746,477		

See footnote(s) at end of table.

--continued

**Dairy Products: Production by Product and Month,
United States, 2001-2002 ¹ (continued)**

Product and Month	By Month			Cumulative		
	2001	2002	Change From 2001	2001	2002	Change From 2001
	<i>1,000 Pounds</i>	<i>1,000 Pounds</i>	<i>Percent</i>	<i>1,000 Pounds</i>	<i>1,000 Pounds</i>	<i>Percent</i>
Italian Cheese						
Jan	284,866	282,491	-0.8	284,866	282,491	-0.8
Feb	268,060	265,977	-0.8	552,926	548,468	-0.8
Mar	302,583	293,345	-3.1	855,509	841,813	-1.6
Apr	272,459	277,912	2.0	1,127,968	1,119,725	-0.7
May	286,039	288,210	0.8	1,414,007	1,407,935	-0.4
Jun	269,665			1,683,672		
Jul	275,857			1,959,529		
Aug	266,736			2,226,265		
Sep	262,616			2,488,881		
Oct	265,763			2,754,644		
Nov	283,112			3,037,756		
Dec	290,516			3,328,272		
Mozzarella Cheese						
Jan	226,475	224,114	-1.0	226,475	224,114	-1.0
Feb	214,507	213,429	-0.5	440,982	437,543	-0.8
Mar	238,805	234,689	-1.7	679,787	672,232	-1.1
Apr	215,432	220,483	2.3	895,219	892,715	-0.3
May	230,249	231,392	0.5	1,125,468	1,124,107	-0.1
Jun	222,013			1,347,481		
Jul	224,953			1,572,434		
Aug	211,184			1,783,618		
Sep	212,654			1,996,272		
Oct	214,476			2,210,748		
Nov	224,558			2,435,306		
Dec	230,443			2,665,749		
Other Italian						
Jan	58,391	58,377		58,391	58,377	
Feb	53,553	52,548	-1.9	111,944	110,925	-0.9
Mar	63,778	58,656	-8.0	175,722	169,581	-3.5
Apr	57,027	57,429	0.7	232,749	227,010	-2.5
May	55,790	56,818	1.8	288,539	283,828	-1.6
Jun	47,652			336,191		
Jul	50,904			387,095		
Aug	55,552			442,647		
Sep	49,962			492,609		
Oct	51,287			543,896		
Nov	58,554			602,450		
Dec	60,073			662,523		

See footnote(s) at end of table.

--continued

**Dairy Products: Production by Product and Month,
United States, 2001-2002 ¹ (continued)**

Product and Month	By Month			Cumulative		
	2001	2002	Change From 2001	2001	2002	Change From 2001
	<i>1,000 Pounds</i>	<i>1,000 Pounds</i>	<i>Percent</i>	<i>1,000 Pounds</i>	<i>1,000 Pounds</i>	<i>Percent</i>
Butter						
Jan	127,356	140,687	10.5	127,356	140,687	10.5
Feb	111,809	125,352	12.1	239,165	266,039	11.2
Mar	111,374	128,966	15.8	350,539	395,005	12.7
Apr	108,975	132,406	21.5	459,514	527,411	14.8
May	111,001	126,519	14.0	570,515	653,930	14.6
Jun	86,783			657,298		
Jul	84,210			741,508		
Aug	75,557			817,065		
Sep	86,721			903,786		
Oct	109,911			1,013,697		
Nov	100,079			1,113,776		
Dec	123,025			1,236,801		
Nonfat Dry Milk, Human						
Jan	118,299	118,892	0.5	118,299	118,892	0.5
Feb	119,068	125,838	5.7	237,367	244,730	3.1
Mar	121,080	147,761	22.0	358,447	392,491	9.5
Apr	131,695	158,291	20.2	490,142	550,782	12.4
May	140,423	158,062	12.6	630,565	708,844	12.4
Jun	131,455			762,020		
Jul	117,452			879,472		
Aug	96,127			975,599		
Sep	94,396			1,069,995		
Oct	105,788			1,175,783		
Nov	107,211			1,282,994		
Dec	130,805			1,413,799		
Total Dry Whey ²						
Jan	88,994	90,205	1.4	88,994	90,205	1.4
Feb	84,053	85,878	2.2	173,047	176,083	1.8
Mar	93,241	96,495	3.5	266,288	272,578	2.4
Apr	89,600	93,981	4.9	355,888	366,559	3.0
May	94,120	99,790	6.0	450,008	466,349	3.6
Jun	91,432			541,440		
Jul	92,044			633,484		
Aug	83,119			716,603		
Sep	76,322			792,925		
Oct	79,617			872,542		
Nov	82,295			954,837		
Dec	90,955			1,045,792		

See footnote(s) at end of table.

--continued

**Dairy Products: Production by Product and Month,
United States, 2001-2002 ¹ (continued)**

Product and Month	By Month			Cumulative		
	2001	2002	Change From 2001	2001	2002	Change From 2001
	<i>1,000 Pounds</i>	<i>1,000 Pounds</i>	<i>Percent</i>	<i>1,000 Pounds</i>	<i>1,000 Pounds</i>	<i>Percent</i>
Cream Cottage Cheese						
Jan	31,088	29,765	-4.3	31,088	29,765	-4.3
Feb	28,137	28,788	2.3	59,225	58,553	-1.1
Mar	32,915	31,520	-4.2	92,140	90,073	-2.2
Apr	29,684	30,502	2.8	121,824	120,575	-1.0
May	33,883	32,622	-3.7	155,707	153,197	-1.6
Jun	31,283			186,990		
Jul	32,521			219,511		
Aug	33,575			253,086		
Sep	29,825			282,911		
Oct	31,324			314,235		
Nov	29,778			344,013		
Dec	27,512			371,525		
Lowfat Cottage Cheese						
Jan	30,262	29,609	-2.2	30,262	29,609	-2.2
Feb	28,858	30,006	4.0	59,120	59,615	0.8
Mar	32,994	32,509	-1.5	92,114	92,124	
Apr	29,825	30,524	2.3	121,939	122,648	0.6
May	35,011	34,290	-2.1	156,950	156,938	
Jun	30,705			187,655		
Jul	31,387			219,042		
Aug	35,659			254,701		
Sep	29,764			284,465		
Oct	31,192			315,657		
Nov	28,402			344,059		
Dec	26,825			370,884		
	<i>1,000 Gallons</i>	<i>1,000 Gallons</i>	<i>Percent</i>	<i>1,000 Gallons</i>	<i>1,000 Gallons</i>	<i>Percent</i>
Ice Cream, Hard						
Jan	67,446	70,004	3.8	67,446	70,004	3.8
Feb	67,583	71,034	5.1	135,029	141,038	4.5
Mar	77,071	76,680	-0.5	212,100	217,718	2.6
Apr	78,501	80,214	2.2	290,601	297,932	2.5
May	80,467	76,936	-4.4	371,068	374,868	1.0
Jun	84,752			455,820		
Jul	82,043			537,863		
Aug	79,827			617,690		
Sep	70,197			687,887		
Oct	67,595			755,482		
Nov	59,123			814,605		
Dec	54,548			869,153		

See footnote(s) at end of table.

--continued

**Dairy Products: Production by Product and Month,
United States, 2001-2002 ¹ (continued)**

Product and Month	By Month			Cumulative		
	2001	2002	Change From 2001	2001	2002	Change From 2001
	<i>1,000 Gallons</i>	<i>1,000 Gallons</i>	<i>Percent</i>	<i>1,000 Gallons</i>	<i>1,000 Gallons</i>	<i>Percent</i>
Ice Cream, Lowfat						
Jan	26,825	22,119	-17.5	26,825	22,119	-17.5
Feb	27,510	24,976	-9.2	54,335	47,095	-13.3
Mar	35,206	31,620	-10.2	89,541	78,715	-12.1
Apr	36,974	36,060	-2.5	126,515	114,775	-9.3
May	41,675	38,924	-6.6	168,190	153,699	-8.6
Jun	43,893			212,083		
Jul	41,495			253,578		
Aug	39,978			293,556		
Sep	31,511			325,067		
Oct	30,776			355,843		
Nov	25,239			381,082		
Dec	25,664			406,746		
Ice Cream, NF, Hard						
Jan	1,369	2,074	51.5	1,369	2,074	51.5
Feb	1,451	1,610	11.0	2,820	3,684	30.6
Mar	1,712	2,034	18.8	4,532	5,718	26.2
Apr	1,558	1,561	0.2	6,090	7,279	19.5
May	1,789	1,534	-14.3	7,879	8,813	11.9
Jun	2,082			9,961		
Jul	1,655			11,616		
Aug	1,835			13,451		
Sep	1,694			15,145		
Oct	1,490			16,635		
Nov	1,333			17,968		
Dec	1,204			19,172		
Sherbet, Hard						
Jan	3,552	3,796	6.9	3,552	3,796	6.9
Feb	3,858	4,050	5.0	7,410	7,846	5.9
Mar	4,494	4,786	6.5	11,904	12,632	6.1
Apr	4,227	5,127	21.3	16,131	17,759	10.1
May	5,150	5,417	5.2	21,281	23,176	8.9
Jun	5,310			26,591		
Jul	5,037			31,628		
Aug	4,654			36,282		
Sep	3,731			40,013		
Oct	3,575			43,588		
Nov	3,010			46,598		
Dec	2,870			49,468		

See footnote(s) at end of table.

--continued

**Dairy Products: Production by Product and Month,
United States, 2001-2002¹ (continued)**

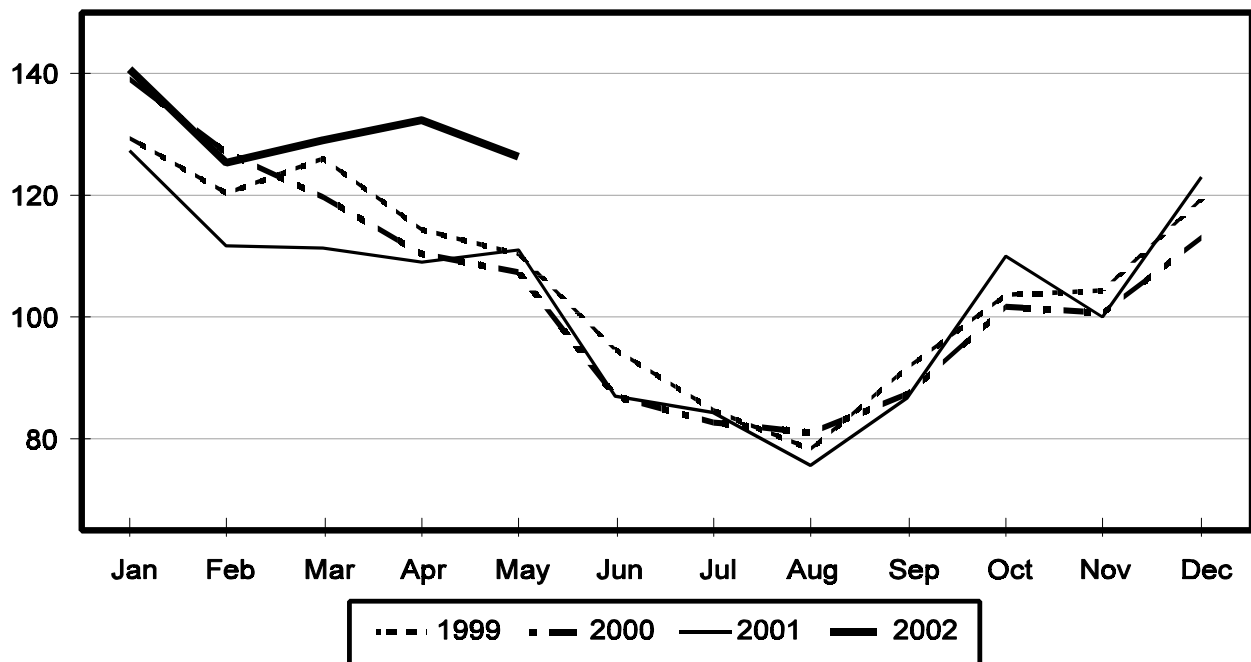
Product and Month	By Month			Cumulative		
	2001	2002	Change From 2001	2001	2002	Change From 2001
	<i>1,000 Gallons</i>	<i>1,000 Gallons</i>	<i>Percent</i>	<i>1,000 Gallons</i>	<i>1,000 Gallons</i>	<i>Percent</i>
Frozen Yogurt						
Jan	6,516	5,976	-8.3	6,516	5,976	-8.3
Feb	5,939	6,348	6.9	12,455	12,324	-1.1
Mar	7,388	6,900	-6.6	19,843	19,224	-3.1
Apr	6,970	6,878	-1.3	26,813	26,102	-2.7
May	7,886	7,410	-6.0	34,699	33,512	-3.4
Jun	7,755			42,454		
Jul	7,370			49,824		
Aug	8,067			57,891		
Sep	5,895			63,786		
Oct	5,887			69,673		
Nov	5,329			75,002		
Dec	4,597			79,599		

¹ April 2002 data revised.

² Excludes all modified dry whey products.

Total Butter Production United States

Million Pounds



**Total Cheese, Excluding Cottage Cheese: Production by
State and United States, May 2001-2002**

State	May 2001	Apr ¹ 2002	May 2002	Change From	
				May 2001	Apr 2002
	<i>1,000 Pounds</i>	<i>1,000 Pounds</i>	<i>1,000 Pounds</i>	<i>Percent</i>	<i>Percent</i>
CA	135,517	138,878	145,178	7.1	4.5
ID	48,658	49,325	51,339	5.5	4.1
IL	8,854	7,434	7,912	-10.6	6.4
IA	22,796	24,269	23,675	3.9	-2.4
MA	81	76	74	-8.6	-2.6
MN	50,987	53,614	54,567	7.0	1.8
MO	8,427	6,938	8,680	3.0	25.1
NY	60,669	57,887	57,660	-5.0	-0.4
OH	12,678	13,697	13,170	3.9	-3.8
PA	33,390	33,767	35,375	5.9	4.8
SD	12,933	12,642	13,217	2.2	4.5
UT	6,175	6,215	6,004	-2.8	-3.4
WA	12,842	12,666	13,025	1.4	2.8
WI	187,630	183,143	185,570	-1.1	1.3
Oth Sts ²	105,153	98,749	108,200	2.9	9.6
US	706,790	699,300	723,646	2.4	3.5
N Atlantic	109,304	106,546	109,721	0.4	3.0
S Atlantic	3,400	4,167	3,503	3.0	-15.9
E N Central	224,984	218,264	222,545	-1.1	2.0
W N Central	105,465	106,184	108,980	3.3	2.6
S Central	4,286	4,684	4,370	2.0	-6.7
West	259,351	259,455	274,527	5.9	5.8

¹ Revised.

² States not shown when fewer than 3 plants reported or individual plant operations could be disclosed. Percent change shown only when comparable States are included in the calculation.

American Cheese: Production by State and United States, May 2001-2002

State	May 2001	Apr ¹ 2002	May 2002	Change From	
				May 2001	Apr 2002
	<i>1,000 Pounds</i>	<i>1,000 Pounds</i>	<i>1,000 Pounds</i>	<i>Percent</i>	<i>Percent</i>
CA	60,503	64,347	68,173	12.7	5.9
ID	41,484	41,735	42,601	2.7	2.1
IA	12,030	12,175	12,923	7.4	6.1
MN	47,082	51,420	52,549	11.6	2.2
NY	9,458	9,016	9,959	5.3	10.5
OH	2,379	3,449	3,004	26.3	-12.9
OR	5,326	6,959	8,334	56.5	19.8
SD	7,416	6,294	6,686	-9.8	6.2
WA	12,424	12,556	13,005	4.7	3.6
WI	75,723	73,700	73,850	-2.5	0.2
Oth Sts ²	34,723	35,149	36,277	4.5	3.2
US	308,548	316,800	327,361	6.1	3.3
Atlantic	15,522	14,961	15,902	2.4	6.3
E N Central	79,568	78,460	78,280	-1.6	-0.2
W N Central	68,312	71,773	74,198	8.6	3.4
S Central	3,873	4,361	3,944	1.8	-9.6
West	141,273	147,245	155,037	9.7	5.3

¹ Revised.

² States not shown when fewer than 3 plants reported or individual plant operations could be disclosed. Percent change shown only when comparable States are included in the calculation.

Cheddar Cheese: Production by State and United States, May 2001-2002

State	May 2001	Apr ¹ 2002	May 2002	Change From	
				May 2001	Apr 2002
	<i>1,000 Pounds</i>	<i>1,000 Pounds</i>	<i>1,000 Pounds</i>	<i>Percent</i>	<i>Percent</i>
CA	46,990	47,295	49,491	5.3	4.6
ID	20,757	20,210	20,329	-2.1	0.6
MN	43,280	48,716	49,897	15.3	2.4
NY	9,349	8,943	9,869	5.6	10.4
SD	6,102	4,749	4,079	-33.2	-14.1
WA	9,804	10,216	10,702	9.2	4.8
WI	62,536	60,300	60,550	-3.2	0.4
Oth Sts ²	45,796	48,855	51,286	12.0	5.0
US	244,614	249,284	256,203	4.7	2.8
Atlantic	15,032	14,684	15,532	3.3	5.8
E N Cen	64,577	63,063	62,977	-2.5	-0.1
W N Cen	57,561	62,461	63,482	10.3	1.6
S Cen	3,862	4,345	3,936	1.9	-9.4
West	103,582	104,731	110,276	6.5	5.3

¹ Revised.

² States not shown when fewer than 3 plants reported or individual plant operations could be disclosed. Percent change shown only when comparable States are included in the calculation.

Mozzarella Cheese: Production by State and United States, May 2001-2002

State	May 2001	Apr ¹ 2002	May 2002	Change From	
				May 2001	Apr 2002
	<i>1,000 Pounds</i>	<i>1,000 Pounds</i>	<i>1,000 Pounds</i>	<i>Percent</i>	<i>Percent</i>
CA	56,712	54,926	57,589	1.5	4.8
NY	22,071	17,214	17,016	-22.9	-1.2
WI	58,418	63,200	62,800	7.5	-0.6
Oth Sts ²	93,048	85,143	93,987	1.0	10.4
US	230,249	220,483	231,392	0.5	4.9
Atlantic ³	48,874	43,756	46,007	-5.9	5.1
E N Central	73,007	75,968	77,436	6.1	1.9
West	91,160	85,528	92,349	1.3	8.0

¹ Revised.

² States not shown when fewer than 3 plants reported or individual plant operations could be disclosed. Percent change shown only when comparable States are included in the calculation.

³ Region totals may not add to U.S. when compiled regions could not be disclosed.

Butter: Production by State and United States, May 2001-2002

State	May 2001	Apr ¹ 2002	May 2002	Change From	
				May 2001	Apr 2002
	<i>1,000 Pounds</i>	<i>1,000 Pounds</i>	<i>1,000 Pounds</i>	<i>Percent</i>	<i>Percent</i>
CA	26,867	35,024	35,150	30.8	0.4
NY	2,507	2,799	2,785	11.1	-0.5
PA	7,670	8,856	8,910	16.2	0.6
WA	9,037	9,298	10,193	12.8	9.6
WI	28,175	35,200	32,500	15.4	-7.7
Oth Sts ²	36,745	41,229	36,981	0.6	-10.3
US	111,001	132,406	126,519	14.0	-4.4
N Atlantic ³	15,737	16,006	15,788	0.3	-1.4
E N Central	31,714	39,076	35,888	13.2	-8.2
W N Central	10,540	12,020	10,895	3.4	-9.4
West	41,554	49,686	50,522	21.6	1.7

¹ Revised.

² States not shown when fewer than 3 plants reported or individual plant operations could be disclosed. Percent change shown only when comparable States are included in the calculation.

³ Region totals may not add to U.S. when compiled regions could not be disclosed.

**Nonfat Dry Milk, Human: Production by State
and United States, May 2001-2002**

State	May 2001	Apr ¹ 2002	May 2002	Change From	
				May 2001	Apr 2002
	<i>1,000 Pounds</i>	<i>1,000 Pounds</i>	<i>1,000 Pounds</i>	<i>Percent</i>	<i>Percent</i>
CA	61,773	68,155	67,082	8.6	-1.6
ID	8,201	9,099	8,518	3.9	-6.4
WA	16,981	17,224	17,435	2.7	1.2
Oth Sts ²	53,468	63,813	65,027	21.6	1.9
US	140,423	158,291	158,062	12.6	-0.1
Atlantic	18,180	24,464	23,753	30.7	-2.9
E N Central	6,321	5,283	6,858	8.5	29.8
W N Central	7,947	7,787	7,836	-1.4	0.6
S Central	8,921	8,990	8,638	-3.2	-3.9
West	99,054	111,767	110,977	12.0	-0.7

¹ Revised.

² States not shown when fewer than 3 plants reported or individual plant operations could be disclosed. Percent change shown only when comparable States are included in the calculation.

**Dry Whey, Human: Production by State
and United States, May 2001-2002**

State	May 2001	Apr ¹ 2002	May 2002	Change From	
				May 2001	Apr 2002
	<i>1,000 Pounds</i>	<i>1,000 Pounds</i>	<i>1,000 Pounds</i>	<i>Percent</i>	<i>Percent</i>
CA	11,541	11,706	12,640	9.5	8.0
MN	7,331	7,015	7,244	-1.2	3.3
NY	11,320	10,573	11,228	-0.8	6.2
PA	9,137	9,903	11,588	26.8	17.0
WA	6,883	8,183	8,074	17.3	-1.3
WI	23,845	25,232	25,200	5.7	-0.1
Oth Sts ²	17,619	16,186	18,353	4.2	13.4
US	87,676	88,798	94,327	7.6	6.2
Atlantic	20,457	20,476	22,816	11.5	11.4
Central	44,308	43,677	45,952	3.7	5.2
West	22,911	24,645	25,559	11.6	3.7

¹ Revised.

² States not shown when fewer than 3 plants reported or individual plant operations could be disclosed. Percent change shown only when comparable States are included in the calculation.

Ice Cream, Hard: Production by State and United States, May 2001-2002

State	May 2001	Apr ¹ 2002	May 2002	Change From	
				May 2001	Apr 2002
	<i>1,000 Gallons</i>	<i>1,000 Gallons</i>	<i>1,000 Gallons</i>	<i>Percent</i>	<i>Percent</i>
CA	12,367	11,045	12,764	3.2	15.6
FL	1,665	1,770	1,800	8.1	1.7
IL	3,560	2,736	2,748	-22.8	0.4
IN	6,193	7,704	4,615	-25.5	-40.1
MD	1,790	1,923	1,790		-6.9
MA	5,166	6,651	6,042	17.0	-9.2
MI	2,038	1,845	1,923	-5.6	4.2
MN	3,956	3,494	3,939	-0.4	12.7
NH	14	12	14		16.7
NY	3,237	3,000	2,500	-22.8	-16.7
NC	1,691	1,715	1,909	12.9	11.3
OH	3,028	2,745	2,968	-2.0	8.1
OK		1,655	1,901		14.9
OR	1,217	1,090	1,200	-1.4	10.1
PA	4,320	3,484	3,360	-22.2	-3.6
SD	2	3	3	50.0	
TN	1,854	1,773	1,592	-14.1	-10.2
TX	4,813	4,239	4,486	-6.8	5.8
UT	1,556	1,205	1,521	-2.2	26.2
WA	1,300	1,215	1,430	10.0	17.7
Oth Sts ²	20,700	20,910	18,431	-11.0	-11.9
US	80,467	80,214	76,936	-4.4	-4.1
N Atlantic	15,879	15,925	15,019	-5.4	-5.7
S Atlantic	6,710	6,728	6,833	1.8	1.6
E N Central	15,776	15,923	13,086	-17.1	-17.8
W N Central	12,347	13,988	12,124	-1.8	-13.3
S Central	10,311	9,359	9,753	-5.4	4.2
West	19,444	18,291	20,121	3.5	10.0

¹ Revised.

² States not shown when fewer than 3 plants reported or individual plant operations could be disclosed. Percent change shown only when comparable States are included in the calculation.

**Canned Milk and Dry Milk Products: Manufacturers' Shipments,
Stocks, and Selling Prices, May, 2001-2002**

Product	May 2001	Apr 2002 ¹	May 2002	Change From	
				May 2001	Apr 2002
Manufacturers' Shipments ²					
	<i>1,000 Pounds</i>	<i>1,000 Pounds</i>	<i>1,000 Pounds</i>	<i>Percent</i>	<i>Percent</i>
Nonfat Dry Milk, Human	160,210	178,830	184,409	15.1	3.1
Manufacturers' Stocks End-of-Month ³					
	<i>1,000 Pounds</i>	<i>1,000 Pounds</i>	<i>1,000 Pounds</i>	<i>Percent</i>	<i>Percent</i>
Canned Evaporated and Condensed Whole Milk	64,606	48,809	55,828	-13.6	14.4
Nonfat Dry Milk, Human	134,039	160,801	155,000	15.6	-3.6
Dry Buttermilk, Total	5,055	12,615	12,124	139.8	-3.9

¹ Revised.

² For dry products, shipments of bulk goods only.

³ Stocks held by manufacturers at all points and in transit.

Procedures and Reliability: Estimates included in this report are based on data provided each month by manufacturers of these products. In 32 States, the State Departments of Agriculture assist in collection of data, which eliminates duplicate reporting and reduces respondent burden. Data are collected by mail, personal and telephone interviews following the close of each month. There were 1,165 manufacturers that made one or more products in 2001. Each month, reports are generally received from all dairy plants in States with small numbers of plants. In States with large numbers of plants, survey procedures are designed to obtain monthly reports from all large plants and from a sample of small plants. Monthly estimates are based upon returns from about 70 percent of the plants which account for 70 to 90 percent of the total production of major dairy products.

Revision Policy: Monthly estimates are subject to revision the month following the preliminary estimates. Annual estimates are published in the "**Dairy Products**" report published each April which includes any revisions made to current and previous year. In preparing the annual report, an attempt is made to get information from all plants.

The next "Dairy Products" report will be released at 3 p.m. ET on August 5, 2002.

The United States Department of Agriculture (USDA) prohibits discrimination in all its programs on the basis of race, color, national origin, gender, religion, age, disability, political beliefs, sexual orientation, and marital or family status. (Not all prohibited bases apply to all programs.) Persons with disabilities who require alternative means for communication of program information (braille, large print, audiotape, etc.) should contact the USDA's TARGET Center at 202-720-2600 (voice and TDD).

To file a complaint of discrimination, write USDA, Director, Office of Civil Rights, Room 326-W, Whitten Building, 1400 Independence Avenue, SW, Washington, D.C., 20250-9410, or call 202-720-5964 (voice or TDD). USDA is an equal opportunity provider and employer.

ACCESS TO REPORTS!!

For your convenience, there are several ways to obtain NASS reports, data products, and services:

INTERNET ACCESS

All NASS reports are available free of charge on the worldwide Internet. For access, connect to the Internet and go to the NASS Home Page at: <http://www.usda.gov/nass/>. Select "Today's Reports" or Publications and then Reports by Calendar or Publications and then Search, by Title or Subject.

E-MAIL SUBSCRIPTION

There are two options for subscribing via e-mail. All NASS reports are available by subscription free of charge direct to your e-mail address. 1) Starting with the NASS Home Page at <http://www.usda.gov/nass/>, click on **Publications**, then click on the **Subscribe by E-mail** button which takes you to the page describing e-mail delivery of reports. Finally, click on **Go to the Subscription Page** and follow the instructions. 2) If you do NOT have Internet access, send an e-mail message to: usda-reports@usda.mannlib.cornell.edu. In the body of the message type the word: **list**.

AUTOFAX ACCESS

NASSFax service is available for some reports from your fax machine. Please call 202-720-2000, using the handset attached to your fax. Respond to the voice prompts. Document 0411 is a list of available reports.

PRINTED REPORTS OR DATA PRODUCTS

CALL OUR TOLL-FREE ORDER DESK: 800-999-6779 (U.S. and Canada)
Other areas, please call 703-605-6220 FAX: 703-605-6900
(Visa, MasterCard, check, or money order acceptable for payment.)

ASSISTANCE

For **assistance** with general agricultural statistics or further information about NASS or its products or services, contact the **Agricultural Statistics Hotline** at **800-727-9540**, 7:30 a.m. to 4:00 p.m. ET, or e-mail: nass@nass.usda.gov.
