

Released August 5, 2002, by the National Agricultural Statistics Service (NASS), Agricultural Statistics Board, U.S. Department of Agriculture. For information on "Dairy Products" call Kevin Pautler at (202) 720-9168, office hours 6:45 a.m. to 3:30 p.m. ET.

## June 2002 Highlights

**Total cheese** output (excluding cottage cheese) was 686 million pounds, 1.0 percent above June 2001 but 5.3 percent below May 2002.

**American type cheese** production totaled 309 million pounds, 1.6 percent above June 2001 but 5.1 percent below May 2002.

**Butter** production was 97.9 million pounds in June, 12.8 percent above June 2001 but 22.6 percent below May 2002.

**Frozen dessert:** (comparisons with June 2001)

Ice cream, Regular (hard) --- 81.1 million gallons, down 4.3 percent.

Ice cream, Lowfat (total) --- 39.3 million gallons, down 10.5 percent.

Ice cream, Nonfat (hard) --- 1.42 million gallons, down 32.0 percent.

Sherbet (hard) --- 5.47 million gallons, up 3.1 percent.

Frozen Yogurt (total) --- 6.93 million gallons, down 10.7 percent.

**Nonfat dry milk for human food:** (compared with June 2001) --- 148 million pounds, up 12.9 percent.

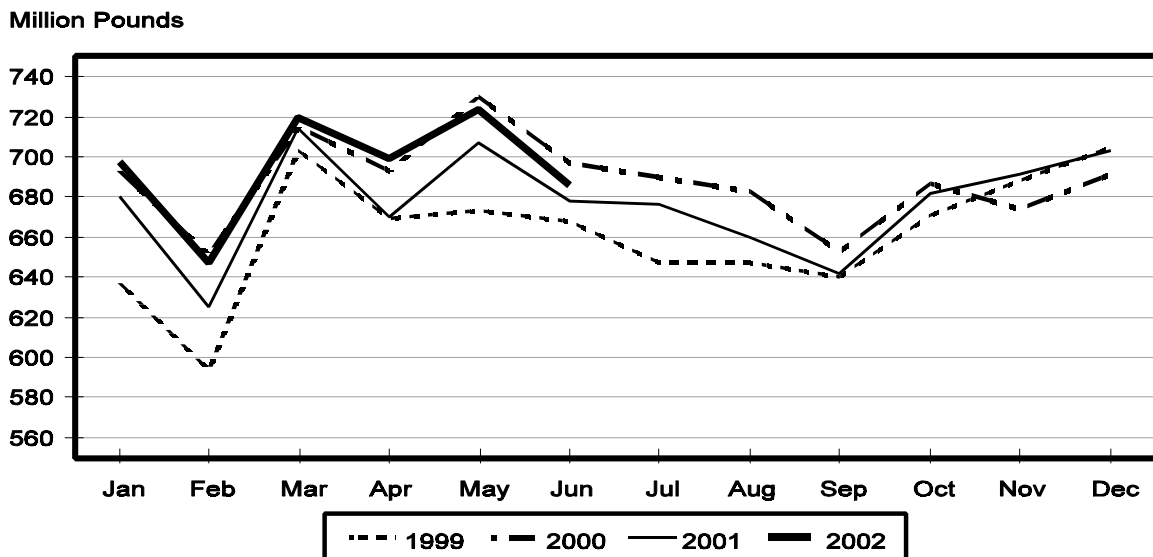
**Dry whey products:** (comparisons with June 2001)

Dry whey, human --- 89.2 million pounds, up 5.4 percent.

Dry whey, animal --- 5.00 million pounds, down 25.8 percent.

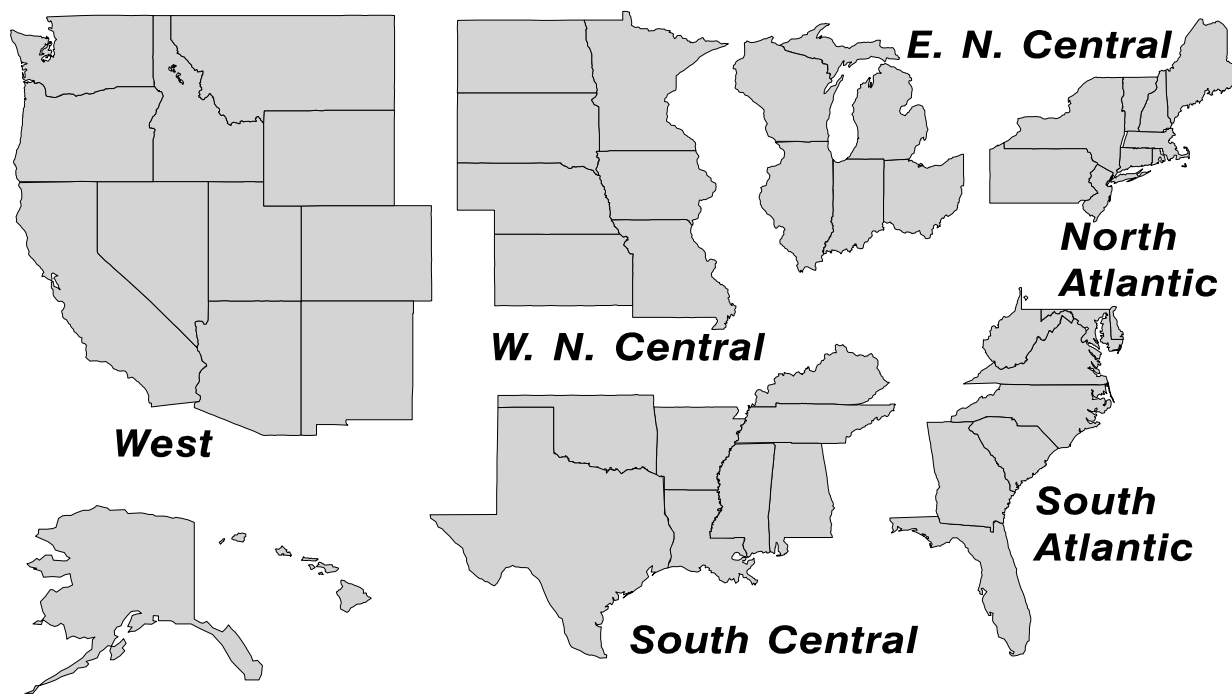
Dry whey, total --- 94.2 million pounds, up 3.1 percent.

## Total Cheese Production United States



## U. S. Geographic Regions Dairy Products

State totals are not published when fewer than 3 firms have reported or one firm comprises more than 60 percent of the State total. If we are not able to publish a region for confidentiality reasons, it will be combined with other regions when possible. For example, if North Atlantic can not be published, then it will be combined with South Atlantic to publish Atlantic. The West North Central and East North Central will be combined, if necessary, to form North Central. In the event that neither could be published, they may be combined with South Central to publish Central. Some tables will have only limited regions shown, therefore the regions may not add to the United States total.



**Dairy Products: Production by Product,  
United States, June, 2001-2002**

Product	Jun 2001	May 2002 <sup>1</sup>	Jun 2002	Change From	
				Jun 2001	May 2002
	<i>1,000 Pounds</i>	<i>1,000 Pounds</i>	<i>1,000 Pounds</i>	<i>Percent</i>	<i>Percent</i>
Butter	86,783	126,533	97,913	12.8	-22.6
Cheese					
American Types <sup>2</sup>	304,618	326,180	309,460	1.6	-5.1
Cheddar	239,366	256,090	239,716	0.1	-6.4
Swiss	20,712	21,549	20,743	0.1	-3.7
Brick and Muenster	7,582	7,734	7,336	-3.2	-5.1
Cream and Neufchatel	50,563	50,198	55,779	10.3	11.1
Hispanic	8,112	10,124	9,067	11.8	-10.4
Mozzarella	222,013	233,630	215,482	-2.9	-7.8
Other Italian Types	47,652	56,869	51,237	7.5	-9.9
Total Italian Types	269,665	290,499	265,719	-1.5	-8.5
All Other Types	17,265	17,845	16,537	-4.2	-7.3
Total	678,517	724,129	685,641	1.0	-5.3
Cottage Cheese, Curd <sup>3</sup>	37,918	40,160	35,808	-5.6	-10.8
Cottage Cheese, Cream <sup>4</sup>	31,283	32,554	30,600	-2.2	-6.0
Cottage Cheese, Lowfat <sup>5</sup>	30,705	34,477	29,546	-3.8	-14.3
Canned Evaporated and					
Condensed Whole Milk	43,669	37,175	46,966	7.5	26.3
Dry Whole Milk	2,558	3,807	4,609	80.2	21.1
Nonfat Dry Milk, Human	131,455	158,062	148,411	12.9	-6.1
Dry Skim Milk, Animal	725	708	593	-18.2	-16.2
Dry Buttermilk	3,502	5,635	4,032	15.1	-28.4
Yogurt, Plain & Flavored	178,084	182,556	173,285	-2.7	-5.1
	<i>1,000 Gallons</i>	<i>1,000 Gallons</i>	<i>1,000 Gallons</i>	<i>Percent</i>	<i>Percent</i>
Frozen Products					
Ice Cream, Hard	84,752	76,953	81,117	-4.3	5.4
Ice Cream, Lowfat, Hard	9,286	10,119	9,353	0.7	-7.6
Ice Cream, Lowfat, Soft	34,607	28,841	29,917	-13.6	3.7
Ice Cream, Lowfat, Total	43,893	38,960	39,270	-10.5	0.8
Ice Cream, Nonfat, Hard	2,082	1,543	1,415	-32.0	-8.3
Sherbet, Hard	5,310	5,417	5,473	3.1	1.0
Water and Juice Ices	6,889	6,537	6,721	-2.4	2.8
Frozen Yogurt, Total	7,755	7,443	6,928	-10.7	-6.9
Regular & Lowfat, Hard	2,289	2,457	2,167	-5.3	-11.8
Nonfat, Hard	1,308	1,078	1,206	-7.8	11.9
Other Frozen Dairy					
Products	1,068	924	842	-21.2	-8.9
Mix for Frozen Products					
Ice Cream Mix	49,599	45,969	47,939	-3.3	4.3
Ice Cream, Lowfat, Mix	23,731	21,620	21,825	-8.0	0.9
Ice Cream, Nonfat, Mix	1,301	1,020	1,030	-20.8	1.0
Sherbet Mix	3,867	3,788	3,795	-1.9	0.2
Yogurt Mix	4,028	4,378	4,075	1.2	-6.9

<sup>1</sup> Revised.

<sup>2</sup> Includes Cheddar, Colby, Monterey, and Jack.

<sup>3</sup> Mostly used for processing into cream or lowfat cottage cheese.

<sup>4</sup> Fat content 4 percent or more.

<sup>5</sup> Fat content less than 4 percent.

**Whey and Modified Whey Products: Production, Stocks,  
and Prices, United States, June, 2001-2002**

Product	Jun 2001	May 2002 <sup>1</sup>	Jun 2002	Change From	
				Jun 2001	May 2002
<b>Production</b>					
	<i>1,000 Pounds</i>	<i>1,000 Pounds</i>	<i>1,000 Pounds</i>	<i>Percent</i>	<i>Percent</i>
Condensed Whey, Solids Content <sup>2</sup>					
Sweet-Type, Human	6,968	8,102	7,588	8.9	-6.3
Sweet-Type, Animal	912	1,059	848	-7.0	-19.9
Dry Whey Products					
Dry Whey, Human	84,691	92,872	89,237	5.4	-3.9
Dry Whey, Animal	6,741	5,501	5,004	-25.8	-9.0
Dry Whey, Total	91,432	98,373	94,241	3.1	-4.2
Reduced Lactose and Minerals					
Human Food	8,233	9,541	8,129	-1.3	-14.8
Animal Feed	3,369	3,735	3,409	1.2	-8.7
Lactose, Human and Animal	43,873	48,314	47,522	8.3	-1.6
Whey					
Solids in Wet Blends, Animal	3,695	2,709	2,953	-20.1	9.0
Protein Concentrate, Human	24,491	26,453	24,400	-0.4	-7.8
Protein Concentrate, Animal	4,092	3,208	2,476	-39.5	-22.8
<b>Manufacturers' Stocks End-of-Month <sup>3</sup></b>					
	<i>1,000 Pounds</i>	<i>1,000 Pounds</i>	<i>1,000 Pounds</i>	<i>Percent</i>	<i>Percent</i>
Dry Whey Products					
Dry Whey, Human	28,954	35,606	38,309	32.3	7.6
Dry Whey, Animal	5,329	1,552	2,227	-58.2	43.5
Reduced Lactose and Minerals					
Human and Animal <sup>4</sup>	6,435	9,875	9,870	53.4	-0.1
Lactose, Human and Animal	28,108	45,300	45,577	62.1	0.6
Whey Protein Concentrate, Human	13,861	23,650	26,075	88.1	10.3
Whey Protein Concentrate, Animal	1,894	1,586	1,950	3.0	23.0
<b>Manufacturers' Selling Price <sup>5</sup></b>					
	<i>Cents per Pound</i>	<i>Cents per Pound</i>	<i>Cents per Pound</i>	<i>Cents Change</i>	<i>Cents Change</i>
Dry Whey, Animal	26.9	16.5	14.6	-12.3	-1.9

<sup>1</sup> Revised.

<sup>2</sup> Final marketable product only. Does not include quantity used or shipped to another plant for further processing into dry whey or modified whey products.

<sup>3</sup> Stocks held by manufacturers at all points and in transit.

<sup>4</sup> Reduced lactose and minerals stocks combined to avoid disclosure of individual operations.

<sup>5</sup> Prices for bulk goods, f.o.b. plant. Average monthly prices reported by firms.

**Dairy Products: Production by Product and Month,  
United States, 2001-2002 <sup>1</sup>**

Product and Month	By Month			Cumulative		
	2001	2002	Change From 2001	2001	2002	Change From 2001
	<i>1,000 Pounds</i>	<i>1,000 Pounds</i>	<i>Percent</i>	<i>1,000 Pounds</i>	<i>1,000 Pounds</i>	<i>Percent</i>
<b>Total Cheese</b>						
Jan	680,299	697,560	2.5	680,299	697,560	2.5
Feb	625,310	647,091	3.5	1,305,609	1,344,651	3.0
Mar	713,722	719,546	0.8	2,019,331	2,064,197	2.2
Apr	670,221	699,300	4.3	2,689,552	2,763,497	2.7
May	706,790	724,129	2.5	3,396,342	3,487,626	2.7
Jun	678,517	685,641	1.0	4,074,859	4,173,267	2.4
Jul	676,018			4,750,877		
Aug	660,033			5,410,910		
Sep	641,785			6,052,695		
Oct	682,080			6,734,775		
Nov	691,229			7,426,004		
Dec	703,090			8,129,094		
<b>American Cheese</b>						
Jan	300,419	315,166	4.9	300,419	315,166	4.9
Feb	270,134	287,383	6.4	570,553	602,549	5.6
Mar	297,097	318,242	7.1	867,650	920,791	6.1
Apr	291,905	316,800	8.5	1,159,555	1,237,591	6.7
May	308,548	326,180	5.7	1,468,103	1,563,771	6.5
Jun	304,618	309,460	1.6	1,772,721	1,873,231	5.7
Jul	293,372			2,066,093		
Aug	281,527			2,347,620		
Sep	277,046			2,624,666		
Oct	295,991			2,920,657		
Nov	286,276			3,206,933		
Dec	312,229			3,519,162		
<b>Cheddar Cheese</b>						
Jan	236,611	246,156	4.0	236,611	246,156	4.0
Feb	211,627	224,971	6.3	448,238	471,127	5.1
Mar	233,113	249,156	6.9	681,351	720,283	5.7
Apr	229,129	249,284	8.8	910,480	969,567	6.5
May	244,614	256,090	4.7	1,155,094	1,225,657	6.1
Jun	239,366	239,716	0.1	1,394,460	1,465,373	5.1
Jul	230,631			1,625,091		
Aug	216,481			1,841,572		
Sep	216,267			2,057,839		
Oct	230,948			2,288,787		
Nov	217,992			2,506,779		
Dec	239,698			2,746,477		

See footnote(s) at end of table.

--continued

**Dairy Products: Production by Product and Month,  
United States, 2001-2002 <sup>1</sup> (continued)**

Product and Month	By Month			Cumulative		
	2001	2002	Change From 2001	2001	2002	Change From 2001
	<i>1,000 Pounds</i>	<i>1,000 Pounds</i>	<i>Percent</i>	<i>1,000 Pounds</i>	<i>1,000 Pounds</i>	<i>Percent</i>
<b>Italian Cheese</b>						
Jan	284,866	282,491	-0.8	284,866	282,491	-0.8
Feb	268,060	265,977	-0.8	552,926	548,468	-0.8
Mar	302,583	293,345	-3.1	855,509	841,813	-1.6
Apr	272,459	277,912	2.0	1,127,968	1,119,725	-0.7
May	286,039	290,499	1.6	1,414,007	1,410,224	-0.3
Jun	269,665	265,719	-1.5	1,683,672	1,675,943	-0.5
Jul	275,857			1,959,529		
Aug	266,736			2,226,265		
Sep	262,616			2,488,881		
Oct	265,763			2,754,644		
Nov	283,112			3,037,756		
Dec	290,516			3,328,272		
<b>Mozzarella Cheese</b>						
Jan	226,475	224,114	-1.0	226,475	224,114	-1.0
Feb	214,507	213,429	-0.5	440,982	437,543	-0.8
Mar	238,805	234,689	-1.7	679,787	672,232	-1.1
Apr	215,432	220,483	2.3	895,219	892,715	-0.3
May	230,249	233,630	1.5	1,125,468	1,126,345	0.1
Jun	222,013	215,482	-2.9	1,347,481	1,341,827	-0.4
Jul	224,953			1,572,434		
Aug	211,184			1,783,618		
Sep	212,654			1,996,272		
Oct	214,476			2,210,748		
Nov	224,558			2,435,306		
Dec	230,443			2,665,749		
<b>Other Italian</b>						
Jan	58,391	58,377		58,391	58,377	
Feb	53,553	52,548	-1.9	111,944	110,925	-0.9
Mar	63,778	58,656	-8.0	175,722	169,581	-3.5
Apr	57,027	57,429	0.7	232,749	227,010	-2.5
May	55,790	56,869	1.9	288,539	283,879	-1.6
Jun	47,652	51,237	7.5	336,191	335,116	-0.3
Jul	50,904			387,095		
Aug	55,552			442,647		
Sep	49,962			492,609		
Oct	51,287			543,896		
Nov	58,554			602,450		
Dec	60,073			662,523		

See footnote(s) at end of table.

--continued

**Dairy Products: Production by Product and Month,  
United States, 2001-2002 <sup>1</sup> (continued)**

Product and Month	By Month			Cumulative		
	2001	2002	Change From 2001	2001	2002	Change From 2001
	<i>1,000 Pounds</i>	<i>1,000 Pounds</i>	<i>Percent</i>	<i>1,000 Pounds</i>	<i>1,000 Pounds</i>	<i>Percent</i>
<b>Butter</b>						
Jan	127,356	140,687	10.5	127,356	140,687	10.5
Feb	111,809	125,352	12.1	239,165	266,039	11.2
Mar	111,374	128,966	15.8	350,539	395,005	12.7
Apr	108,975	132,406	21.5	459,514	527,411	14.8
May	111,001	126,533	14.0	570,515	653,944	14.6
Jun	86,783	97,913	12.8	657,298	751,857	14.4
Jul	84,210			741,508		
Aug	75,557			817,065		
Sep	86,721			903,786		
Oct	109,911			1,013,697		
Nov	100,079			1,113,776		
Dec	123,025			1,236,801		
<b>Nonfat Dry Milk, Human</b>						
Jan	118,299	118,892	0.5	118,299	118,892	0.5
Feb	119,068	125,838	5.7	237,367	244,730	3.1
Mar	121,080	147,761	22.0	358,447	392,491	9.5
Apr	131,695	158,291	20.2	490,142	550,782	12.4
May	140,423	158,062	12.6	630,565	708,844	12.4
Jun	131,455	148,411	12.9	762,020	857,255	12.5
Jul	117,452			879,472		
Aug	96,127			975,599		
Sep	94,396			1,069,995		
Oct	105,788			1,175,783		
Nov	107,211			1,282,994		
Dec	130,805			1,413,799		
<b>Total Dry Whey <sup>2</sup></b>						
Jan	88,994	90,205	1.4	88,994	90,205	1.4
Feb	84,053	85,878	2.2	173,047	176,083	1.8
Mar	93,241	96,495	3.5	266,288	272,578	2.4
Apr	89,600	93,981	4.9	355,888	366,559	3.0
May	94,120	98,373	4.5	450,008	464,932	3.3
Jun	91,432	94,241	3.1	541,440	559,173	3.3
Jul	92,044			633,484		
Aug	83,119			716,603		
Sep	76,322			792,925		
Oct	79,617			872,542		
Nov	82,295			954,837		
Dec	90,955			1,045,792		

See footnote(s) at end of table.

--continued

**Dairy Products: Production by Product and Month,  
United States, 2001-2002 <sup>1</sup> (continued)**

Product and Month	By Month			Cumulative		
	2001	2002	Change From 2001	2001	2002	Change From 2001
	<i>1,000 Pounds</i>	<i>1,000 Pounds</i>	<i>Percent</i>	<i>1,000 Pounds</i>	<i>1,000 Pounds</i>	<i>Percent</i>
<b>Cream Cottage Cheese</b>						
Jan	31,088	29,765	-4.3	31,088	29,765	-4.3
Feb	28,137	28,788	2.3	59,225	58,553	-1.1
Mar	32,915	31,520	-4.2	92,140	90,073	-2.2
Apr	29,684	30,502	2.8	121,824	120,575	-1.0
May	33,883	32,554	-3.9	155,707	153,129	-1.7
Jun	31,283	30,600	-2.2	186,990	183,729	-1.7
Jul	32,521			219,511		
Aug	33,575			253,086		
Sep	29,825			282,911		
Oct	31,324			314,235		
Nov	29,778			344,013		
Dec	27,512			371,525		
<b>Lowfat Cottage Cheese</b>						
Jan	30,262	29,609	-2.2	30,262	29,609	-2.2
Feb	28,858	30,006	4.0	59,120	59,615	0.8
Mar	32,994	32,509	-1.5	92,114	92,124	
Apr	29,825	30,524	2.3	121,939	122,648	0.6
May	35,011	34,477	-1.5	156,950	157,125	0.1
Jun	30,705	29,546	-3.8	187,655	186,671	-0.5
Jul	31,387			219,042		
Aug	35,659			254,701		
Sep	29,764			284,465		
Oct	31,192			315,657		
Nov	28,402			344,059		
Dec	26,825			370,884		
	<i>1,000 Gallons</i>	<i>1,000 Gallons</i>	<i>Percent</i>	<i>1,000 Gallons</i>	<i>1,000 Gallons</i>	<i>Percent</i>
<b>Ice Cream, Hard</b>						
Jan	67,446	70,004	3.8	67,446	70,004	3.8
Feb	67,583	71,034	5.1	135,029	141,038	4.5
Mar	77,071	76,680	-0.5	212,100	217,718	2.6
Apr	78,501	80,214	2.2	290,601	297,932	2.5
May	80,467	76,953	-4.4	371,068	374,885	1.0
Jun	84,752	81,117	-4.3	455,820	456,002	
Jul	82,043			537,863		
Aug	79,827			617,690		
Sep	70,197			687,887		
Oct	67,595			755,482		
Nov	59,123			814,605		
Dec	54,548			869,153		

See footnote(s) at end of table.

--continued



**Dairy Products: Production by Product and Month,  
United States, 2001-2002 <sup>1</sup> (continued)**

Product and Month	By Month			Cumulative		
	2001	2002	Change From 2001	2001	2002	Change From 2001
	<i>1,000 Gallons</i>	<i>1,000 Gallons</i>	<i>Percent</i>	<i>1,000 Gallons</i>	<i>1,000 Gallons</i>	<i>Percent</i>
<b>Ice Cream, Lowfat</b>						
Jan	26,825	22,119	-17.5	26,825	22,119	-17.5
Feb	27,510	24,976	-9.2	54,335	47,095	-13.3
Mar	35,206	31,620	-10.2	89,541	78,715	-12.1
Apr	36,974	36,060	-2.5	126,515	114,775	-9.3
May	41,675	38,960	-6.5	168,190	153,735	-8.6
Jun	43,893	39,270	-10.5	212,083	193,005	-9.0
Jul	41,495			253,578		
Aug	39,978			293,556		
Sep	31,511			325,067		
Oct	30,776			355,843		
Nov	25,239			381,082		
Dec	25,664			406,746		
<b>Ice Cream, NF, Hard</b>						
Jan	1,369	2,074	51.5	1,369	2,074	51.5
Feb	1,451	1,610	11.0	2,820	3,684	30.6
Mar	1,712	2,034	18.8	4,532	5,718	26.2
Apr	1,558	1,561	0.2	6,090	7,279	19.5
May	1,789	1,543	-13.8	7,879	8,822	12.0
Jun	2,082	1,415	-32.0	9,961	10,237	2.8
Jul	1,655			11,616		
Aug	1,835			13,451		
Sep	1,694			15,145		
Oct	1,490			16,635		
Nov	1,333			17,968		
Dec	1,204			19,172		
<b>Sherbet, Hard</b>						
Jan	3,552	3,796	6.9	3,552	3,796	6.9
Feb	3,858	4,050	5.0	7,410	7,846	5.9
Mar	4,494	4,786	6.5	11,904	12,632	6.1
Apr	4,227	5,127	21.3	16,131	17,759	10.1
May	5,150	5,417	5.2	21,281	23,176	8.9
Jun	5,310	5,473	3.1	26,591	28,649	7.7
Jul	5,037			31,628		
Aug	4,654			36,282		
Sep	3,731			40,013		
Oct	3,575			43,588		
Nov	3,010			46,598		
Dec	2,870			49,468		

See footnote(s) at end of table.

--continued

**Dairy Products: Production by Product and Month,  
United States, 2001-2002<sup>1</sup> (continued)**

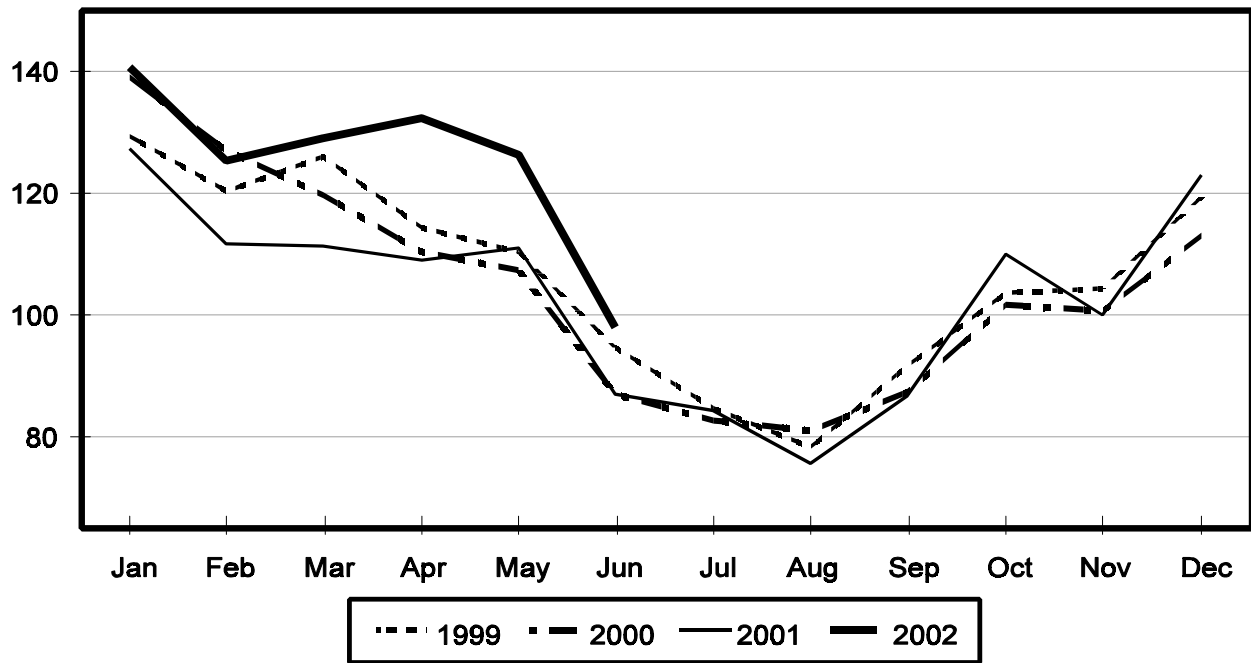
Product and Month	By Month			Cumulative		
	2001	2002	Change From 2001	2001	2002	Change From 2001
	<i>1,000 Gallons</i>	<i>1,000 Gallons</i>	<i>Percent</i>	<i>1,000 Gallons</i>	<i>1,000 Gallons</i>	<i>Percent</i>
Frozen Yogurt						
Jan	6,516	5,976	-8.3	6,516	5,976	-8.3
Feb	5,939	6,348	6.9	12,455	12,324	-1.1
Mar	7,388	6,900	-6.6	19,843	19,224	-3.1
Apr	6,970	6,878	-1.3	26,813	26,102	-2.7
May	7,886	7,443	-5.6	34,699	33,545	-3.3
Jun	7,755	6,928	-10.7	42,454	40,473	-4.7
Jul	7,370			49,824		
Aug	8,067			57,891		
Sep	5,895			63,786		
Oct	5,887			69,673		
Nov	5,329			75,002		
Dec	4,597			79,599		

<sup>1</sup> May 2002 data revised.

<sup>2</sup> Excludes all modified dry whey products.

## Total Butter Production United States

Million Pounds



**Total Cheese, Excluding Cottage Cheese: Production by  
State and United States, June 2001-2002**

State	Jun 2001	May <sup>1</sup> 2002	Jun 2002	Change From	
				Jun 2001	May 2002
	<i>1,000 Pounds</i>	<i>1,000 Pounds</i>	<i>1,000 Pounds</i>	<i>Percent</i>	<i>Percent</i>
CA	134,507	144,723	137,047	1.9	-5.3
ID	45,824	52,456	49,844	8.8	-5.0
IL	8,154	7,875	7,350	-9.9	-6.7
IA	22,949	23,654	23,527	2.5	-0.5
MA	69	74	67	-2.9	-9.5
MN	48,775	54,269	52,113	6.8	-4.0
MO	7,904	8,680	7,810	-1.2	-10.0
NY	55,852	57,695	57,582	3.1	-0.2
OH	12,428	13,171	12,261	-1.3	-6.9
PA	31,692	35,375	31,316	-1.2	-11.5
SD	12,459	13,283	12,458	0.0	-6.2
UT	6,074	6,111	6,065	-0.1	-0.8
WA	13,027	13,029	12,824	-1.6	-1.6
WI	179,169	185,533	177,531	-0.9	-4.3
Oth Sts <sup>2</sup>	99,634	108,201	97,846	-1.8	-9.6
US	678,517	724,129	685,641	1.0	-5.3
N Atlantic	102,326	109,757	102,043	-0.3	-7.0
S Atlantic	3,153	3,503	3,053	-3.2	-12.8
E N Central	215,272	222,472	211,966	-1.5	-4.7
W N Central	102,079	108,727	104,587	2.5	-3.8
S Central	4,876	4,370	6,160	26.3	41.0
West	250,811	275,300	257,832	2.8	-6.3

<sup>1</sup> Revised.

<sup>2</sup> States not shown when fewer than 3 plants reported or individual plant operations could be disclosed. Percent change shown only when comparable States are included in the calculation.

**American Cheese: Production by State and United States, June 2001-2002**

State	Jun 2001	May <sup>1</sup> 2002	Jun 2002	Change From	
				Jun 2001	May 2002
	<i>1,000 Pounds</i>	<i>1,000 Pounds</i>	<i>1,000 Pounds</i>	<i>Percent</i>	<i>Percent</i>
CA	65,663	68,173	65,593	-0.1	-3.8
ID	39,432	41,824	39,086	-0.9	-6.5
IA	11,003	12,792	11,558	5.0	-9.6
MN	45,029	52,251	50,098	11.3	-4.1
NY	9,802	9,980	8,230	-16.0	-17.5
OH	2,252	3,004	2,668	18.5	-11.2
OR	5,144	8,334	8,085	57.2	-3.0
SD	7,368	6,689	6,161	-16.4	-7.9
WA	12,685	13,006	12,801	0.9	-1.6
WI	71,499	73,850	72,300	1.1	-2.1
Oth Sts <sup>2</sup>	34,741	36,277	32,880	-5.4	-9.4
US	304,618	326,180	309,460	1.6	-5.1
Atlantic	15,175	15,923	12,207	-19.6	-23.3
E N Central	75,044	78,280	76,187	1.5	-2.7
W N Central	65,576	73,772	69,122	5.4	-6.3
S Central	4,488	3,944	4,511	0.5	14.4
West	144,335	154,261	147,433	2.1	-4.4

<sup>1</sup> Revised.

<sup>2</sup> States not shown when fewer than 3 plants reported or individual plant operations could be disclosed. Percent change shown only when comparable States are included in the calculation.

**Cheddar Cheese: Production by State and United States, June 2001-2002**

State	Jun 2001	May <sup>1</sup> 2002	Jun 2002	Change From	
				Jun 2001	May 2002
	<i>1,000 Pounds</i>	<i>1,000 Pounds</i>	<i>1,000 Pounds</i>	<i>Percent</i>	<i>Percent</i>
CA	51,028	49,491	46,796	-8.3	-5.4
ID	19,733	20,317	17,231	-12.7	-15.2
MN	41,158	49,599	47,594	15.6	-4.0
NY	9,739	9,890	8,129	-16.5	-17.8
SD	5,081	4,082	3,874	-23.8	-5.1
WA	10,385	10,703	11,150	7.4	4.2
WI	57,129	60,550	58,600	2.6	-3.2
Oth Sts <sup>2</sup>	45,113	51,458	46,342	2.7	-9.9
US	239,366	256,090	239,716	0.1	-6.4
Atlantic	14,809	15,553	11,896	-19.7	-23.5
E N Cen	58,993	62,977	60,696	2.9	-3.6
W N Cen	53,957	63,359	58,847	9.1	-7.1
S Cen	4,488	3,936	4,511	0.5	14.6
West	107,119	110,265	103,766	-3.1	-5.9

<sup>1</sup> Revised.

<sup>2</sup> States not shown when fewer than 3 plants reported or individual plant operations could be disclosed. Percent change shown only when comparable States are included in the calculation.

**Mozzarella Cheese: Production by State and United States, June 2001-2002**

State	Jun 2001	May <sup>1</sup> 2002	Jun 2002	Change From	
				Jun 2001	May 2002
	<i>1,000 Pounds</i>	<i>1,000 Pounds</i>	<i>1,000 Pounds</i>	<i>Percent</i>	<i>Percent</i>
CA	55,629	57,589	54,338	-2.3	-5.6
NY	21,518	17,016	17,417	-19.1	2.4
WI	59,026	62,800	59,200	0.3	-5.7
Oth Sts <sup>2</sup>	85,840	96,225	84,527	-1.5	-12.2
US	222,013	233,630	215,482	-2.9	-7.8
Atlantic <sup>3</sup>	46,969	46,007	41,314	-12.0	-10.2
E N Central	73,492	77,436	72,726	-1.0	-6.1
West	85,542	94,587	85,862	0.4	-9.2

<sup>1</sup> Revised.

<sup>2</sup> States not shown when fewer than 3 plants reported or individual plant operations could be disclosed. Percent change shown only when comparable States are included in the calculation.

<sup>3</sup> Region totals may not add to U.S. when compiled regions could not be disclosed.

**Butter: Production by State and United States, June 2001-2002**

State	Jun 2001	May <sup>1</sup> 2002	Jun 2002	Change From	
				Jun 2001	May 2002
	<i>1,000 Pounds</i>	<i>1,000 Pounds</i>	<i>1,000 Pounds</i>	<i>Percent</i>	<i>Percent</i>
CA	23,177	35,150	28,587	23.3	-18.7
NY	2,359	2,785	1,815	-23.1	-34.8
PA	5,180	8,910	6,205	19.8	-30.4
WA	7,748	10,193	8,310	7.3	-18.5
WI	23,458	32,500	23,200	-1.1	-28.6
Oth Sts <sup>2</sup>	24,861	36,995	29,796	19.9	-19.5
US	86,783	126,533	97,913	12.8	-22.6
N Atlantic <sup>3</sup>	9,972	15,788	11,730	17.6	-25.7
E N Central	25,993	35,888	25,075	-3.5	-30.1
W N Central	8,233	10,895	8,869	7.7	-18.6
West	35,539	50,536	42,121	18.5	-16.7

<sup>1</sup> Revised.

<sup>2</sup> States not shown when fewer than 3 plants reported or individual plant operations could be disclosed. Percent change shown only when comparable States are included in the calculation.

<sup>3</sup> Region totals may not add to U.S. when compiled regions could not be disclosed.

**Nonfat Dry Milk, Human: Production by State  
and United States, June 2001-2002**

State	Jun 2001	May <sup>1</sup> 2002	Jun 2002	Change From	
				Jun 2001	May 2002
	<i>1,000 Pounds</i>	<i>1,000 Pounds</i>	<i>1,000 Pounds</i>	<i>Percent</i>	<i>Percent</i>
CA	59,236	67,082	63,522	7.2	-5.3
ID	7,398	8,518	8,220	11.1	-3.5
WA	17,666	17,435	17,712	0.3	1.6
Oth Sts <sup>2</sup>	47,155	65,027	58,957	25.0	-9.3
US	131,455	158,062	148,411	12.9	-6.1
Atlantic	15,946	23,753	21,393	34.2	-9.9
E N Central	6,097	6,858	6,382	4.7	-6.9
W N Central	7,612	7,836	7,242	-4.9	-7.6
S Central	5,822	8,638	7,502	28.9	-13.2
West	95,978	110,977	105,892	10.3	-4.6

<sup>1</sup> Revised.

<sup>2</sup> States not shown when fewer than 3 plants reported or individual plant operations could be disclosed. Percent change shown only when comparable States are included in the calculation.

**Dry Whey, Human: Production by State  
and United States, June 2001-2002**

State	Jun 2001	May <sup>1</sup> 2002	Jun 2002	Change From	
				Jun 2001	May 2002
	<i>1,000 Pounds</i>	<i>1,000 Pounds</i>	<i>1,000 Pounds</i>	<i>Percent</i>	<i>Percent</i>
CA	11,704	12,640	12,839	9.7	1.6
MN	6,206	7,064	6,658	7.3	-5.7
NY	10,532	11,228	10,128	-3.8	-9.8
PA	8,329	9,951	7,987	-4.1	-19.7
WA	6,542	8,074	8,450	29.2	4.7
WI	24,087	25,386	25,200	4.6	-0.7
Oth Sts <sup>2</sup>	17,291	18,529	17,975	4.0	-3.0
US	84,691	92,872	89,237	5.4	-3.9
Atlantic	18,861	21,179	18,115	-4.0	-14.5
Central	43,651	45,922	45,546	4.3	-0.8
West	22,179	25,771	25,576	15.3	-0.8

<sup>1</sup> Revised.

<sup>2</sup> States not shown when fewer than 3 plants reported or individual plant operations could be disclosed. Percent change shown only when comparable States are included in the calculation.

**Ice Cream, Hard: Production by State and United States, June 2001-2002**

State	Jun 2001	May <sup>1</sup> 2002	Jun 2002	Change From	
				Jun 2001	May 2002
	<i>1,000 Gallons</i>	<i>1,000 Gallons</i>	<i>1,000 Gallons</i>	<i>Percent</i>	<i>Percent</i>
CA	13,568	12,764	13,161	-3.0	3.1
FL	1,664	1,800	2,000	20.2	11.1
IL	4,026	2,748	2,954	-26.6	7.5
IN	6,798	4,615	6,579	-3.2	42.6
MD	1,971	1,790	1,971		10.1
MA	5,570	6,042	5,731	2.9	-5.1
MI	2,037	1,923	2,081	2.2	8.2
MN	4,771	3,939	4,712	-1.2	19.6
NH	27	14	27		92.9
NY	3,206	2,500	3,000	-6.4	20.0
NC	1,773	1,909	1,775	0.1	-7.0
OH	3,534	2,968	3,166	-10.4	6.7
OR	1,393	1,200	1,300	-6.7	8.3
PA	4,092	3,360	3,323	-18.8	-1.1
SD	2	3	2		-33.3
TN	2,162	1,592	1,622	-25.0	1.9
TX	4,659	4,486	4,351	-6.6	-3.0
UT	1,504	1,521	1,570	4.4	3.2
WA	1,780	1,430	1,361	-23.5	-4.8
Oth Sts <sup>2</sup>	20,215	20,349	20,431	1.1	0.4
US	84,752	76,953	81,117	-4.3	5.4
N Atlantic	15,900	15,020	14,937	-6.1	-0.6
S Atlantic	6,889	6,833	7,132	3.5	4.4
E N Central	17,361	13,086	15,809	-8.9	20.8
W N Central	12,465	12,124	13,108	5.2	8.1
S Central	10,515	9,753	9,514	-9.5	-2.5
West	21,622	20,137	20,617	-4.6	2.4

<sup>1</sup> Revised.

<sup>2</sup> States not shown when fewer than 3 plants reported or individual plant operations could be disclosed. Percent change shown only when comparable States are included in the calculation.

**Canned Milk and Dry Milk Products: Manufacturers' Shipments,  
Stocks, and Selling Prices, June, 2001-2002**

Product	Jun 2001	May 2002 <sup>1</sup>	Jun 2002	Change From	
				Jun 2001	May 2002
	<b>Manufacturers' Shipments <sup>2</sup></b>				
	<i>1,000 Pounds</i>	<i>1,000 Pounds</i>	<i>1,000 Pounds</i>	<i>Percent</i>	<i>Percent</i>
Nonfat Dry Milk, Human	115,860	186,659	172,686	49.0	-7.5
	<b>Manufacturers' Stocks End-of-Month <sup>3</sup></b>				
	<i>1,000 Pounds</i>	<i>1,000 Pounds</i>	<i>1,000 Pounds</i>	<i>Percent</i>	<i>Percent</i>
Canned Evaporated and Condensed Whole Milk	75,085	55,405	57,967	-22.8	4.6
Nonfat Dry Milk, Human	166,665	165,773	168,576	1.1	1.7
Dry Buttermilk, Total	4,302	13,625	13,613	216.4	-0.1

<sup>1</sup> Revised.

<sup>2</sup> For dry products, shipments of bulk goods only.

<sup>3</sup> Stocks held by manufacturers at all points and in transit.



**Procedures and Reliability:** Estimates included in this report are based on data provided each month by manufacturers of these products. In 32 States, the State Departments of Agriculture assist in collection of data, which eliminates duplicate reporting and reduces respondent burden. Data are collected by mail, personal and telephone interviews following the close of each month. There were 1,165 manufacturers that made one or more products in 2001. Each month, reports are generally received from all dairy plants in States with small numbers of plants. In States with large numbers of plants, survey procedures are designed to obtain monthly reports from all large plants and from a sample of small plants. Monthly estimates are based upon returns from about 70 percent of the plants which account for 70 to 90 percent of the total production of major dairy products.

**Revision Policy:** Monthly estimates are subject to revision the month following the preliminary estimates. Annual estimates are published in the "**Dairy Products**" report published each April which includes any revisions made to current and previous year. In preparing the annual report, an attempt is made to get information from all plants.

**The next "Dairy Products" report will be released at 3 p.m. ET on September 4, 2002.**

The United States Department of Agriculture (USDA) prohibits discrimination in all its programs on the basis of race, color, national origin, gender, religion, age, disability, political beliefs, sexual orientation, and marital or family status. (Not all prohibited bases apply to all programs.) Persons with disabilities who require alternative means for communication of program information (braille, large print, audiotape, etc.) should contact the USDA's TARGET Center at 202-720-2600 (voice and TDD).

To file a complaint of discrimination, write USDA, Director, Office of Civil Rights, Room 326-W, Whitten Building, 1400 Independence Avenue, SW, Washington, D.C., 20250-9410, or call 202-720-5964 (voice or TDD). USDA is an equal opportunity provider and employer.

## **ACCESS TO REPORTS!!**

---

For your convenience, there are several ways to obtain NASS reports, data products, and services:

### **INTERNET ACCESS**

All NASS reports are available free of charge on the worldwide Internet. For access, connect to the Internet and go to the NASS Home Page at: <http://www.usda.gov/nass/>. Select "Today's Reports" or Publications and then Reports Calendar or Publications and then Search, by Title or Subject.

### **E-MAIL SUBSCRIPTION**

There are two options for subscribing via e-mail. All NASS reports are available by subscription free of charge direct to your e-mail address. 1) Starting with the NASS Home Page at <http://www.usda.gov/nass/>, click on **Publications**, then click on the **Subscribe by E-mail** button which takes you to the page describing e-mail delivery of reports. Finally, click on **Go to the Subscription Page** and follow the instructions. 2) If you do NOT have Internet access, send an e-mail message to: [usda-reports@usda.mannlib.cornell.edu](mailto:usda-reports@usda.mannlib.cornell.edu). In the body of the message type the word: **list**.

### **AUTOFAX ACCESS**

NASSFax service is available for some reports from your fax machine. Please call 202-720-2000, using the handset attached to your fax. Respond to the voice prompts. Document 0411 is a list of available reports.

-----  
**PRINTED REPORTS OR DATA PRODUCTS**

**CALL OUR TOLL-FREE ORDER DESK: 800-999-6779 (U.S. and Canada)**  
**Other areas, please call 703-605-6220                      FAX: 703-605-6900**  
**(Visa, MasterCard, check, or money order acceptable for payment.)**  
-----

### **ASSISTANCE**

For **assistance** with general agricultural statistics or further information about NASS or its products or services, contact the **Agricultural Statistics Hotline** at **800-727-9540**, 7:30 a.m. to 4:00 p.m. ET, or e-mail: [nass@nass.usda.gov](mailto:nass@nass.usda.gov).

---