

Released September 4, 2002, by the National Agricultural Statistics Service (NASS), Agricultural Statistics Board, U.S. Department of Agriculture. For information on "Dairy Products" call Kevin Pautler at (202) 720-9168, office hours 6:45 a.m. to 3:30 p.m. ET.

July 2002 Highlights

Total cheese output (excluding cottage cheese) was 670 million pounds, 0.8 percent below July 2001 and 2.7 percent below June 2002.

American type cheese production totaled 302 million pounds, 3.0 percent above July 2001 but 2.6 percent below June 2002.

Butter production was 93.9 million pounds in July, 11.5 percent above July 2001 but 3.1 percent below June 2002.

Frozen dessert: (comparisons with July 2001)

Ice cream, Regular (hard) --- 82.6 million gallons, up 0.6 percent.

Ice cream, Lowfat (total) --- 39.4 million gallons, down 5.0 percent.

Ice cream, Nonfat (hard) --- 1.49 million gallons, down 9.7 percent.

Sherbet (hard) --- 5.52 million gallons, up 9.6 percent.

Frozen Yogurt (total) --- 7.39 million gallons, up slightly.

Nonfat dry milk for human food: (compared with July 2001) --- 124 million pounds, up 5.9 percent.

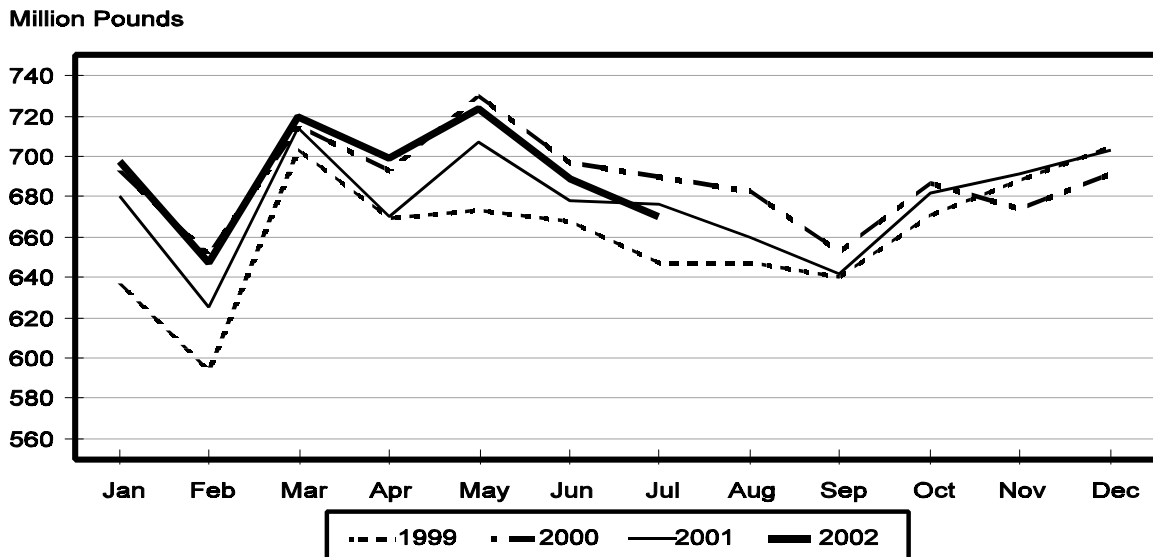
Dry whey products: (comparisons with July 2001)

Dry whey, human --- 85.0 million pounds, up slightly.

Dry whey, animal --- 5.98 million pounds, down 19.6 percent.

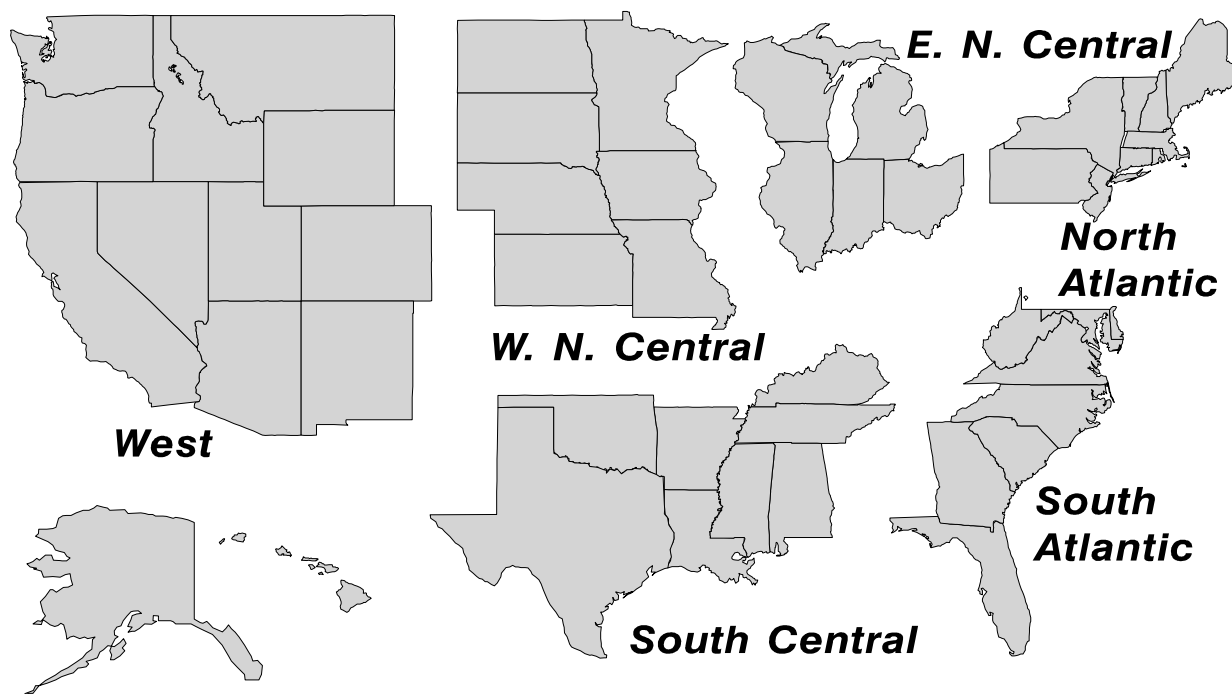
Dry whey, total --- 91.0 million pounds, down 1.2 percent.

Total Cheese Production United States



U. S. Geographic Regions Dairy Products

State totals are not published when fewer than 3 firms have reported or one firm comprises more than 60 percent of the State total. If we are not able to publish a region for confidentiality reasons, it will be combined with other regions when possible. For example, if North Atlantic can not be published, then it will be combined with South Atlantic to publish Atlantic. The West North Central and East North Central will be combined, if necessary, to form North Central. In the event that neither could be published, they may be combined with South Central to publish Central. Some tables will have only limited regions shown, therefore the regions may not add to the United States total.



**Dairy Products: Production by Product,
United States, July, 2001-2002**

Product	Jul 2001	Jun 2002 ¹	Jul 2002	Change From	
				Jul 2001	Jun 2002
	<i>1,000 Pounds</i>	<i>1,000 Pounds</i>	<i>1,000 Pounds</i>	<i>Percent</i>	<i>Percent</i>
Butter	84,210	96,905	93,867	11.5	-3.1
Cheese					
American Types ²	293,372	310,332	302,264	3.0	-2.6
Cheddar	230,631	240,492	229,666	-0.4	-4.5
Swiss	21,231	20,743	20,787	-2.1	0.2
Brick and Muenster	7,696	7,336	7,637	-0.8	4.1
Cream and Neufchatel	52,729	55,770	49,756	-5.6	-10.8
Hispanic	8,721	9,067	9,659	10.8	6.5
Mozzarella	224,953	217,931	209,550	-6.8	-3.8
Other Italian Types	50,904	51,445	52,477	3.1	2.0
Total Italian Types	275,857	269,376	262,027	-5.0	-2.7
All Other Types	16,412	16,361	18,337	11.7	12.1
Total	676,018	688,985	670,467	-0.8	-2.7
Cottage Cheese, Curd ³	38,386	35,659	39,012	1.6	9.4
Cottage Cheese, Cream ⁴	32,521	30,388	31,889	-1.9	4.9
Cottage Cheese, Lowfat ⁵	31,387	29,559	33,977	8.3	14.9
Canned Evaporated and					
Condensed Whole Milk	37,690	46,966	44,798	18.9	-4.6
Dry Whole Milk	3,065	4,614	6,480	111.4	40.4
Nonfat Dry Milk, Human	117,452	147,643	124,366	5.9	-15.8
Dry Skim Milk, Animal	435	593	801	84.1	35.1
Dry Buttermilk	2,800	4,080	3,302	17.9	-19.1
Yogurt, Plain & Flavored	163,316	173,820	181,357	11.0	4.3
	<i>1,000 Gallons</i>	<i>1,000 Gallons</i>	<i>1,000 Gallons</i>	<i>Percent</i>	<i>Percent</i>
Frozen Products					
Ice Cream, Hard	82,043	81,127	82,557	0.6	1.8
Ice Cream, Lowfat, Hard	8,120	9,351	8,099	-0.3	-13.4
Ice Cream, Lowfat, Soft	33,375	30,422	31,323	-6.1	3.0
Ice Cream, Lowfat, Total	41,495	39,773	39,422	-5.0	-0.9
Ice Cream, Nonfat, Hard	1,655	1,415	1,494	-9.7	5.6
Sherbet, Hard	5,037	5,475	5,523	9.6	0.9
Water and Juice Ices	6,587	6,721	6,866	4.2	2.2
Frozen Yogurt, Total	7,370	6,985	7,388	0.2	5.8
Regular & Lowfat, Hard	2,169	2,173	2,260	4.2	4.0
Nonfat, Hard	1,153	1,199	1,229	6.6	2.5
Other Frozen Dairy					
Products	1,123	838	894	-20.4	6.7
Mix for Frozen Products					
Ice Cream Mix	48,192	47,868	48,835	1.3	2.0
Ice Cream, Lowfat, Mix	22,803	22,109	21,959	-3.7	-0.7
Ice Cream, Nonfat, Mix	1,109	1,030	896	-19.2	-13.0
Sherbet Mix	3,630	3,795	3,841	5.8	1.2
Yogurt Mix	4,219	4,109	4,346	3.0	5.8

¹ Revised.

² Includes Cheddar, Colby, Monterey, and Jack.

³ Mostly used for processing into cream or lowfat cottage cheese.

⁴ Fat content 4 percent or more.

⁵ Fat content less than 4 percent.

**Whey and Modified Whey Products: Production, Stocks,
and Prices, United States, July, 2001-2002**

Product	Jul 2001	Jun 2002 ¹	Jul 2002	Change From	
				Jul 2001	Jun 2002
Production					
	<i>1,000 Pounds</i>	<i>1,000 Pounds</i>	<i>1,000 Pounds</i>	<i>Percent</i>	<i>Percent</i>
Condensed Whey, Solids Content ²					
Sweet-Type, Human	7,273	7,802	8,355	14.9	7.1
Sweet-Type, Animal	888	848	674	-24.1	-20.5
Dry Whey Products					
Dry Whey, Human	84,606	88,576	84,980	0.4	-4.1
Dry Whey, Animal	7,438	5,238	5,982	-19.6	14.2
Dry Whey, Total	92,044	93,814	90,962	-1.2	-3.0
Reduced Lactose and Minerals					
Human Food	7,560	8,129	8,946	18.3	10.1
Animal Feed	3,462	3,409	3,529	1.9	3.5
Lactose, Human and Animal	42,734	49,075	49,222	15.2	0.3
Whey					
Solids in Wet Blends, Animal	2,689	2,953	2,424	-9.9	-17.9
Protein Concentrate, Human	22,940	26,501	26,567	15.8	0.2
Protein Concentrate, Animal	3,641	2,476	3,142	-13.7	26.9
Manufacturers' Stocks End-of-Month ³					
	<i>1,000 Pounds</i>	<i>1,000 Pounds</i>	<i>1,000 Pounds</i>	<i>Percent</i>	<i>Percent</i>
Dry Whey Products					
Dry Whey, Human	32,069	36,820	31,344	-2.3	-14.9
Dry Whey, Animal	5,250	2,343	2,876	-45.2	22.7
Reduced Lactose and Minerals					
Human and Animal ⁴	7,530	9,870	11,780	56.4	19.4
Lactose, Human and Animal	26,599	45,699	47,374	78.1	3.7
Whey Protein Concentrate, Human	14,894	32,552	29,669	99.2	-8.9
Whey Protein Concentrate, Animal	2,094	1,950	1,209	-42.3	-38.0
Manufacturers' Selling Price ⁵					
	<i>Cents per Pound</i>	<i>Cents per Pound</i>	<i>Cents per Pound</i>	<i>Cents Change</i>	<i>Cents Change</i>
Dry Whey, Animal	28.0	14.4	15.0	-13.0	0.6

¹ Revised.

² Final marketable product only. Does not include quantity used or shipped to another plant for further processing into dry whey or modified whey products.

³ Stocks held by manufacturers at all points and in transit.

⁴ Reduced lactose and minerals stocks combined to avoid disclosure of individual operations.

⁵ Prices for bulk goods, f.o.b. plant. Average monthly prices reported by firms.

**Dairy Products: Production by Product and Month,
United States, 2001-2002 ¹**

Product and Month	By Month			Cumulative		
	2001	2002	Change From 2001	2001	2002	Change From 2001
	<i>1,000 Pounds</i>	<i>1,000 Pounds</i>	<i>Percent</i>	<i>1,000 Pounds</i>	<i>1,000 Pounds</i>	<i>Percent</i>
Total Cheese						
Jan	680,299	697,560	2.5	680,299	697,560	2.5
Feb	625,310	647,091	3.5	1,305,609	1,344,651	3.0
Mar	713,722	719,546	0.8	2,019,331	2,064,197	2.2
Apr	670,221	699,300	4.3	2,689,552	2,763,497	2.7
May	706,790	724,129	2.5	3,396,342	3,487,626	2.7
Jun	678,517	688,985	1.5	4,074,859	4,176,611	2.5
Jul	676,018	670,467	-0.8	4,750,877	4,847,078	2.0
Aug	660,033			5,410,910		
Sep	641,785			6,052,695		
Oct	682,080			6,734,775		
Nov	691,229			7,426,004		
Dec	703,090			8,129,094		
American Cheese						
Jan	300,419	315,166	4.9	300,419	315,166	4.9
Feb	270,134	287,383	6.4	570,553	602,549	5.6
Mar	297,097	318,242	7.1	867,650	920,791	6.1
Apr	291,905	316,800	8.5	1,159,555	1,237,591	6.7
May	308,548	326,180	5.7	1,468,103	1,563,771	6.5
Jun	304,618	310,332	1.9	1,772,721	1,874,103	5.7
Jul	293,372	302,264	3.0	2,066,093	2,176,367	5.3
Aug	281,527			2,347,620		
Sep	277,046			2,624,666		
Oct	295,991			2,920,657		
Nov	286,276			3,206,933		
Dec	312,229			3,519,162		
Cheddar Cheese						
Jan	236,611	246,156	4.0	236,611	246,156	4.0
Feb	211,627	224,971	6.3	448,238	471,127	5.1
Mar	233,113	249,156	6.9	681,351	720,283	5.7
Apr	229,129	249,284	8.8	910,480	969,567	6.5
May	244,614	256,090	4.7	1,155,094	1,225,657	6.1
Jun	239,366	240,492	0.5	1,394,460	1,466,149	5.1
Jul	230,631	229,666	-0.4	1,625,091	1,695,815	4.4
Aug	216,481			1,841,572		
Sep	216,267			2,057,839		
Oct	230,948			2,288,787		
Nov	217,992			2,506,779		
Dec	239,698			2,746,477		

See footnote(s) at end of table.

--continued

**Dairy Products: Production by Product and Month,
United States, 2001-2002 ¹ (continued)**

Product and Month	By Month			Cumulative		
	2001	2002	Change From 2001	2001	2002	Change From 2001
	<i>1,000 Pounds</i>	<i>1,000 Pounds</i>	<i>Percent</i>	<i>1,000 Pounds</i>	<i>1,000 Pounds</i>	<i>Percent</i>
Italian Cheese						
Jan	284,866	282,491	-0.8	284,866	282,491	-0.8
Feb	268,060	265,977	-0.8	552,926	548,468	-0.8
Mar	302,583	293,345	-3.1	855,509	841,813	-1.6
Apr	272,459	277,912	2.0	1,127,968	1,119,725	-0.7
May	286,039	290,499	1.6	1,414,007	1,410,224	-0.3
Jun	269,665	269,376	-0.1	1,683,672	1,679,600	-0.2
Jul	275,857	262,027	-5.0	1,959,529	1,941,627	-0.9
Aug	266,736			2,226,265		
Sep	262,616			2,488,881		
Oct	265,763			2,754,644		
Nov	283,112			3,037,756		
Dec	290,516			3,328,272		
Mozzarella Cheese						
Jan	226,475	224,114	-1.0	226,475	224,114	-1.0
Feb	214,507	213,429	-0.5	440,982	437,543	-0.8
Mar	238,805	234,689	-1.7	679,787	672,232	-1.1
Apr	215,432	220,483	2.3	895,219	892,715	-0.3
May	230,249	233,630	1.5	1,125,468	1,126,345	0.1
Jun	222,013	217,931	-1.8	1,347,481	1,344,276	-0.2
Jul	224,953	209,550	-6.8	1,572,434	1,553,826	-1.2
Aug	211,184			1,783,618		
Sep	212,654			1,996,272		
Oct	214,476			2,210,748		
Nov	224,558			2,435,306		
Dec	230,443			2,665,749		
Other Italian						
Jan	58,391	58,377		58,391	58,377	
Feb	53,553	52,548	-1.9	111,944	110,925	-0.9
Mar	63,778	58,656	-8.0	175,722	169,581	-3.5
Apr	57,027	57,429	0.7	232,749	227,010	-2.5
May	55,790	56,869	1.9	288,539	283,879	-1.6
Jun	47,652	51,445	8.0	336,191	335,324	-0.3
Jul	50,904	52,477	3.1	387,095	387,801	0.2
Aug	55,552			442,647		
Sep	49,962			492,609		
Oct	51,287			543,896		
Nov	58,554			602,450		
Dec	60,073			662,523		

See footnote(s) at end of table.

--continued

**Dairy Products: Production by Product and Month,
United States, 2001-2002 ¹ (continued)**

Product and Month	By Month			Cumulative		
	2001	2002	Change From 2001	2001	2002	Change From 2001
	<i>1,000 Pounds</i>	<i>1,000 Pounds</i>	<i>Percent</i>	<i>1,000 Pounds</i>	<i>1,000 Pounds</i>	<i>Percent</i>
Butter						
Jan	127,356	140,687	10.5	127,356	140,687	10.5
Feb	111,809	125,352	12.1	239,165	266,039	11.2
Mar	111,374	128,966	15.8	350,539	395,005	12.7
Apr	108,975	132,406	21.5	459,514	527,411	14.8
May	111,001	126,533	14.0	570,515	653,944	14.6
Jun	86,783	96,905	11.7	657,298	750,849	14.2
Jul	84,210	93,867	11.5	741,508	844,716	13.9
Aug	75,557			817,065		
Sep	86,721			903,786		
Oct	109,911			1,013,697		
Nov	100,079			1,113,776		
Dec	123,025			1,236,801		
Nonfat Dry Milk, Human						
Jan	118,299	118,892	0.5	118,299	118,892	0.5
Feb	119,068	125,838	5.7	237,367	244,730	3.1
Mar	121,080	147,761	22.0	358,447	392,491	9.5
Apr	131,695	158,291	20.2	490,142	550,782	12.4
May	140,423	158,062	12.6	630,565	708,844	12.4
Jun	131,455	147,643	12.3	762,020	856,487	12.4
Jul	117,452	124,366	5.9	879,472	980,853	11.5
Aug	96,127			975,599		
Sep	94,396			1,069,995		
Oct	105,788			1,175,783		
Nov	107,211			1,282,994		
Dec	130,805			1,413,799		
Total Dry Whey ²						
Jan	88,994	90,205	1.4	88,994	90,205	1.4
Feb	84,053	85,878	2.2	173,047	176,083	1.8
Mar	93,241	96,495	3.5	266,288	272,578	2.4
Apr	89,600	93,981	4.9	355,888	366,559	3.0
May	94,120	98,373	4.5	450,008	464,932	3.3
Jun	91,432	93,814	2.6	541,440	558,746	3.2
Jul	92,044	90,962	-1.2	633,484	649,708	2.6
Aug	83,119			716,603		
Sep	76,322			792,925		
Oct	79,617			872,542		
Nov	82,295			954,837		
Dec	90,955			1,045,792		

See footnote(s) at end of table.

--continued

**Dairy Products: Production by Product and Month,
United States, 2001-2002 ¹ (continued)**

Product and Month	By Month			Cumulative		
	2001	2002	Change From 2001	2001	2002	Change From 2001
	<i>1,000 Pounds</i>	<i>1,000 Pounds</i>	<i>Percent</i>	<i>1,000 Pounds</i>	<i>1,000 Pounds</i>	<i>Percent</i>
Cream Cottage Cheese						
Jan	31,088	29,765	-4.3	31,088	29,765	-4.3
Feb	28,137	28,788	2.3	59,225	58,553	-1.1
Mar	32,915	31,520	-4.2	92,140	90,073	-2.2
Apr	29,684	30,502	2.8	121,824	120,575	-1.0
May	33,883	32,554	-3.9	155,707	153,129	-1.7
Jun	31,283	30,388	-2.9	186,990	183,517	-1.9
Jul	32,521	31,889	-1.9	219,511	215,406	-1.9
Aug	33,575			253,086		
Sep	29,825			282,911		
Oct	31,324			314,235		
Nov	29,778			344,013		
Dec	27,512			371,525		
Lowfat Cottage Cheese						
Jan	30,262	29,609	-2.2	30,262	29,609	-2.2
Feb	28,858	30,006	4.0	59,120	59,615	0.8
Mar	32,994	32,509	-1.5	92,114	92,124	
Apr	29,825	30,524	2.3	121,939	122,648	0.6
May	35,011	34,477	-1.5	156,950	157,125	0.1
Jun	30,705	29,559	-3.7	187,655	186,684	-0.5
Jul	31,387	33,977	8.3	219,042	220,661	0.7
Aug	35,659			254,701		
Sep	29,764			284,465		
Oct	31,192			315,657		
Nov	28,402			344,059		
Dec	26,825			370,884		
	<i>1,000 Gallons</i>	<i>1,000 Gallons</i>	<i>Percent</i>	<i>1,000 Gallons</i>	<i>1,000 Gallons</i>	<i>Percent</i>
Ice Cream, Hard						
Jan	67,446	70,004	3.8	67,446	70,004	3.8
Feb	67,583	71,034	5.1	135,029	141,038	4.5
Mar	77,071	76,680	-0.5	212,100	217,718	2.6
Apr	78,501	80,214	2.2	290,601	297,932	2.5
May	80,467	76,953	-4.4	371,068	374,885	1.0
Jun	84,752	81,127	-4.3	455,820	456,012	
Jul	82,043	82,557	0.6	537,863	538,569	0.1
Aug	79,827			617,690		
Sep	70,197			687,887		
Oct	67,595			755,482		
Nov	59,123			814,605		
Dec	54,548			869,153		

See footnote(s) at end of table.

--continued

**Dairy Products: Production by Product and Month,
United States, 2001-2002 ¹ (continued)**

Product and Month	By Month			Cumulative		
	2001	2002	Change From 2001	2001	2002	Change From 2001
	<i>1,000 Gallons</i>	<i>1,000 Gallons</i>	<i>Percent</i>	<i>1,000 Gallons</i>	<i>1,000 Gallons</i>	<i>Percent</i>
Ice Cream, Lowfat						
Jan	26,825	22,119	-17.5	26,825	22,119	-17.5
Feb	27,510	24,976	-9.2	54,335	47,095	-13.3
Mar	35,206	31,620	-10.2	89,541	78,715	-12.1
Apr	36,974	36,060	-2.5	126,515	114,775	-9.3
May	41,675	38,960	-6.5	168,190	153,735	-8.6
Jun	43,893	39,773	-9.4	212,083	193,508	-8.8
Jul	41,495	39,422	-5.0	253,578	232,930	-8.1
Aug	39,978			293,556		
Sep	31,511			325,067		
Oct	30,776			355,843		
Nov	25,239			381,082		
Dec	25,664			406,746		
Ice Cream, NF, Hard						
Jan	1,369	2,074	51.5	1,369	2,074	51.5
Feb	1,451	1,610	11.0	2,820	3,684	30.6
Mar	1,712	2,034	18.8	4,532	5,718	26.2
Apr	1,558	1,561	0.2	6,090	7,279	19.5
May	1,789	1,543	-13.8	7,879	8,822	12.0
Jun	2,082	1,415	-32.0	9,961	10,237	2.8
Jul	1,655	1,494	-9.7	11,616	11,731	1.0
Aug	1,835			13,451		
Sep	1,694			15,145		
Oct	1,490			16,635		
Nov	1,333			17,968		
Dec	1,204			19,172		
Sherbet, Hard						
Jan	3,552	3,796	6.9	3,552	3,796	6.9
Feb	3,858	4,050	5.0	7,410	7,846	5.9
Mar	4,494	4,786	6.5	11,904	12,632	6.1
Apr	4,227	5,127	21.3	16,131	17,759	10.1
May	5,150	5,417	5.2	21,281	23,176	8.9
Jun	5,310	5,475	3.1	26,591	28,651	7.7
Jul	5,037	5,523	9.6	31,628	34,174	8.0
Aug	4,654			36,282		
Sep	3,731			40,013		
Oct	3,575			43,588		
Nov	3,010			46,598		
Dec	2,870			49,468		

See footnote(s) at end of table.

--continued

**Dairy Products: Production by Product and Month,
United States, 2001-2002¹ (continued)**

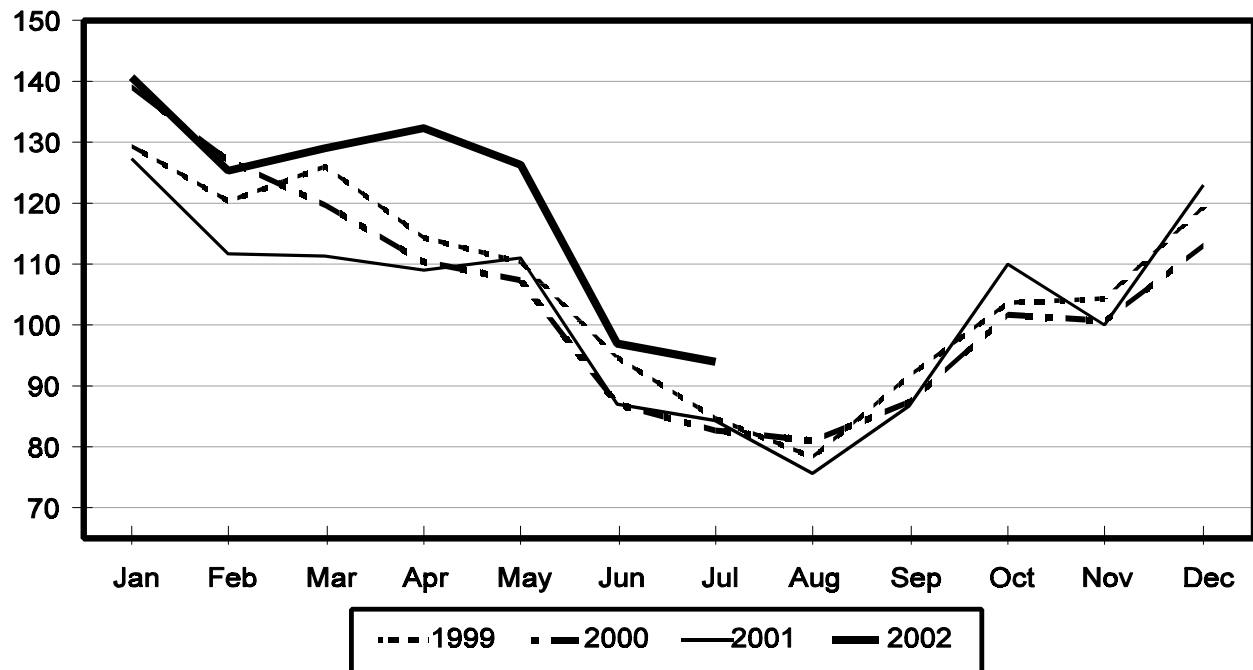
Product and Month	By Month			Cumulative		
	2001	2002	Change From 2001	2001	2002	Change From 2001
	<i>1,000 Gallons</i>	<i>1,000 Gallons</i>	<i>Percent</i>	<i>1,000 Gallons</i>	<i>1,000 Gallons</i>	<i>Percent</i>
Frozen Yogurt						
Jan	6,516	5,976	-8.3	6,516	5,976	-8.3
Feb	5,939	6,348	6.9	12,455	12,324	-1.1
Mar	7,388	6,900	-6.6	19,843	19,224	-3.1
Apr	6,970	6,878	-1.3	26,813	26,102	-2.7
May	7,886	7,443	-5.6	34,699	33,545	-3.3
Jun	7,755	6,985	-9.9	42,454	40,530	-4.5
Jul	7,370	7,388	0.2	49,824	47,918	-3.8
Aug	8,067			57,891		
Sep	5,895			63,786		
Oct	5,887			69,673		
Nov	5,329			75,002		
Dec	4,597			79,599		

¹ June 2002 data revised.

² Excludes all modified dry whey products.

Total Butter Production United States

Million Pounds



**Total Cheese, Excluding Cottage Cheese: Production by
State and United States, July 2001-2002**

State	Jul 2001	Jun ¹ 2002	Jul 2002	Change From	
				Jul 2001	Jun 2002
	<i>1,000 Pounds</i>	<i>1,000 Pounds</i>	<i>1,000 Pounds</i>	<i>Percent</i>	<i>Percent</i>
CA	135,838	139,311	140,472	3.4	0.8
ID	46,065	51,043	49,369	7.2	-3.3
IL	8,193	7,350	7,707	-5.9	4.9
IA	22,215	23,527	22,126	-0.4	-6.0
MA	65	67	120	84.6	79.1
MN	46,436	51,377	47,194	1.6	-8.1
MO	7,326	7,811	8,575	17.0	9.8
NY	59,457	57,551	55,407	-6.8	-3.7
OH	12,294	12,261	12,153	-1.1	-0.9
PA	31,697	31,316	27,720	-12.5	-11.5
SD	12,285	12,401	12,463	1.4	0.5
UT	5,798	6,065	6,011	3.7	-0.9
WA	12,974	12,824	12,685	-2.2	-1.1
WI	175,586	177,728	174,701	-0.5	-1.7
Oth Sts ²	99,789	98,353	93,764	-6.0	-4.7
US	676,018	688,985	670,467	-0.8	-2.7
N Atlantic	106,611	102,579	97,719	-8.3	-4.7
S Atlantic	3,490	3,053	3,447	-1.2	12.9
E N Central	210,898	212,163	207,810	-1.5	-2.1
W N Central	97,911	103,795	98,185	0.3	-5.4
S Central	3,665	6,131	5,650	54.2	-7.8
West	253,443	261,264	257,656	1.7	-1.4

¹ Revised.

² States not shown when fewer than 3 plants reported or individual plant operations could be disclosed. Percent change shown only when comparable States are included in the calculation.

American Cheese: Production by State and United States, July 2001-2002

State	Jul 2001	Jun ¹ 2002	Jul 2002	Change From	
				Jul 2001	Jun 2002
	<i>1,000 Pounds</i>	<i>1,000 Pounds</i>	<i>1,000 Pounds</i>	<i>Percent</i>	<i>Percent</i>
CA	59,499	65,593	64,983	9.2	-0.9
ID	39,402	40,285	41,384	5.0	2.7
IA	10,870	11,558	10,742	-1.2	-7.1
MN	44,532	49,362	45,117	1.3	-8.6
NY	9,745	8,208	8,115	-16.7	-1.1
OH	2,164	2,668	2,405	11.1	-9.9
OR	5,302	8,085	7,971	50.3	-1.4
SD	6,789	6,163	6,243	-8.0	1.3
WA	12,678	12,801	12,657	-0.2	-1.1
WI	68,850	72,300	69,570	1.0	-3.8
Oth Sts ²	33,541	33,309	33,077	-1.4	-0.7
US	293,372	310,332	302,264	3.0	-2.6
Atlantic	16,113	12,642	13,353	-17.1	5.6
E N Central	72,210	76,187	73,377	1.6	-3.7
W N Central	63,746	68,389	63,235	-0.8	-7.5
S Central	3,441	4,482	3,672	6.7	-18.1
West	137,862	148,632	148,627	7.8	0.0

¹ Revised.

² States not shown when fewer than 3 plants reported or individual plant operations could be disclosed. Percent change shown only when comparable States are included in the calculation.

Cheddar Cheese: Production by State and United States, July 2001-2002

State	Jul 2001	Jun ¹ 2002	Jul 2002	Change From	
				Jul 2001	Jun 2002
	<i>1,000 Pounds</i>	<i>1,000 Pounds</i>	<i>1,000 Pounds</i>	<i>Percent</i>	<i>Percent</i>
CA	44,224	46,796	43,710	-1.2	-6.6
ID	20,508	18,430	19,771	-3.6	7.3
MN	42,175	46,757	42,249	0.2	-9.6
NY	9,680	8,107	8,025	-17.1	-1.0
SD	5,073	3,876	3,822	-24.7	-1.4
WA	9,942	11,150	10,402	4.6	-6.7
WI	54,240	58,600	56,200	3.6	-4.1
Oth Sts ²	44,789	46,776	45,487	1.6	-2.8
US	230,631	240,492	229,666	-0.4	-4.5
Atlantic	15,684	12,337	13,114	-16.4	6.3
E N Cen	56,099	60,696	58,353	4.0	-3.9
W N Cen	54,756	58,012	52,782	-3.6	-9.0
S Cen	3,441	4,482	3,672	6.7	-18.1
West	100,651	104,965	101,745	1.1	-3.1

¹ Revised.

² States not shown when fewer than 3 plants reported or individual plant operations could be disclosed. Percent change shown only when comparable States are included in the calculation.

Mozzarella Cheese: Production by State and United States, July 2001-2002

State	Jul 2001	Jun ¹ 2002	Jul 2002	Change From	
				Jul 2001	Jun 2002
	<i>1,000 Pounds</i>	<i>1,000 Pounds</i>	<i>1,000 Pounds</i>	<i>Percent</i>	<i>Percent</i>
CA	58,103	56,778	58,256	0.3	2.6
NY	20,522	17,417	16,217	-21.0	-6.9
WI	57,552	59,200	59,000	2.5	-0.3
Oth Sts ²	88,776	84,536	76,077	-14.3	-10.0
US	224,953	217,931	209,550	-6.8	-3.8
Atlantic ³	46,679	41,314	39,113	-16.2	-5.3
E N Central	71,395	72,726	70,870	-0.7	-2.6
West	89,800	88,311	84,187	-6.3	-4.7

¹ Revised.

² States not shown when fewer than 3 plants reported or individual plant operations could be disclosed. Percent change shown only when comparable States are included in the calculation.

³ Region totals may not add to U.S. when compiled regions could not be disclosed.

Butter: Production by State and United States, July 2001-2002

State	Jul 2001	Jun ¹ 2002	Jul 2002	Change From	
				Jul 2001	Jun 2002
	<i>1,000 Pounds</i>	<i>1,000 Pounds</i>	<i>1,000 Pounds</i>	<i>Percent</i>	<i>Percent</i>
CA	23,516	28,587	27,868	18.5	-2.5
NY	3,805	1,815	1,997	-47.5	10.0
PA	4,617	6,205	5,264	14.0	-15.2
WA	8,830	8,310	8,987	1.8	8.1
WI	21,354	23,189	23,000	7.7	-0.8
Oth Sts ²	22,088	28,799	26,751	21.1	-7.1
US	84,210	96,905	93,867	11.5	-3.1
N Atlantic ³	9,659	11,730	9,662	0.0	-17.6
E N Central	23,780	25,064	25,216	6.0	0.6
W N Central	7,206	8,797	7,985	10.8	-9.2
West	36,690	42,121	42,051	14.6	-0.2

¹ Revised.

² States not shown when fewer than 3 plants reported or individual plant operations could be disclosed. Percent change shown only when comparable States are included in the calculation.

³ Region totals may not add to U.S. when compiled regions could not be disclosed.

**Nonfat Dry Milk, Human: Production by State
and United States, July 2001-2002**

State	Jul 2001	Jun ¹ 2002	Jul 2002	Change From	
				Jul 2001	Jun 2002
	<i>1,000 Pounds</i>	<i>1,000 Pounds</i>	<i>1,000 Pounds</i>	<i>Percent</i>	<i>Percent</i>
CA	57,044	63,522	59,319	4.0	-6.6
ID	7,084	8,220	8,110	14.5	-1.3
WA	15,996	17,712	17,204	7.6	-2.9
Oth Sts ²	37,328	58,189	39,733	6.4	-31.7
US	117,452	147,643	124,366	5.9	-15.8
Atlantic	14,328	21,393	11,605	-19.0	-45.8
E N Central	5,042	6,382	4,088	-18.9	-35.9
W N Central	6,230	7,092	5,967	-4.2	-15.9
S Central	3,451	6,884	4,624	34.0	-32.8
West	88,401	105,892	98,082	11.0	-7.4

¹ Revised.

² States not shown when fewer than 3 plants reported or individual plant operations could be disclosed. Percent change shown only when comparable States are included in the calculation.

**Dry Whey, Human: Production by State
and United States, July 2001-2002**

State	Jul 2001	Jun ¹ 2002	Jul 2002	Change From	
				Jul 2001	Jun 2002
	<i>1,000 Pounds</i>	<i>1,000 Pounds</i>	<i>1,000 Pounds</i>	<i>Percent</i>	<i>Percent</i>
CA	11,912	12,839	12,891	8.2	0.4
MN	5,354	6,299	5,820	8.7	-7.6
NY	10,751	10,128	10,287	-4.3	1.6
PA	8,630	7,987	7,730	-10.4	-3.2
WA	7,272	8,450	8,287	14.0	-1.9
WI	23,941	24,898	24,800	3.6	-0.4
Oth Sts ²	16,746	17,975	15,165	-9.4	-15.6
US	84,606	88,576	84,980	0.4	-4.1
Atlantic	19,381	18,115	18,017	-7.0	-0.5
Central	42,173	44,885	41,742	-1.0	-7.0
West	23,052	25,576	25,221	9.4	-1.4

¹ Revised.

² States not shown when fewer than 3 plants reported or individual plant operations could be disclosed. Percent change shown only when comparable States are included in the calculation.

Ice Cream, Hard: Production by State and United States, July 2001-2002

State	Jul 2001	Jun ¹ 2002	Jul 2002	Change From	
				Jul 2001	Jun 2002
	<i>1,000 Gallons</i>	<i>1,000 Gallons</i>	<i>1,000 Gallons</i>	<i>Percent</i>	<i>Percent</i>
CA	11,599	13,202	12,456	7.4	-5.7
FL	2,105	2,000	2,100	-0.2	5.0
IL	3,297	2,954	2,850	-13.6	-3.5
IN	7,423	6,579	6,954	-6.3	5.7
MD	1,934	1,971	1,934		-1.9
MA	6,488	5,731	6,755	4.1	17.9
MI	2,358	2,081	2,058	-12.7	-1.1
MN	4,155	4,712	4,058	-2.3	-13.9
NH	24	27	24		-11.1
NY	3,246	3,000	3,000	-7.6	
NC	1,885	1,775	2,031	7.7	14.4
OH	3,287	3,166	2,964	-9.8	-6.4
OR	1,483	1,300	1,390	-6.3	6.9
PA	4,068	3,323	4,758	17.0	43.2
SD	3	2	5	66.7	150.0
TN	1,545	1,622	1,198	-22.5	-26.1
TX	4,549	4,351	4,778	5.0	9.8
UT	1,415	1,570	1,384	-2.2	-11.8
WA	1,570	1,361	1,718	9.4	26.2
Oth Sts ²	19,609	20,400	20,142	2.7	-1.3
US	82,043	81,127	82,557	0.6	1.8
N Atlantic	16,795	14,901	17,372	3.4	16.6
S Atlantic	7,382	7,132	7,608	3.1	6.7
E N Central	17,254	15,809	15,966	-7.5	1.0
W N Central	12,018	13,116	11,962	-0.5	-8.8
S Central	9,733	9,514	9,776	0.4	2.8
West	18,861	20,655	19,873	5.4	-3.8

¹ Revised.

² States not shown when fewer than 3 plants reported or individual plant operations could be disclosed. Percent change shown only when comparable States are included in the calculation.

**Canned Milk and Dry Milk Products: Manufacturers' Shipments,
Stocks, and Selling Prices, July, 2001-2002**

Product	Jul 2001	Jun 2002 ¹	Jul 2002	Change From	
				Jul 2001	Jun 2002
	Manufacturers' Shipments ²				
	<i>1,000 Pounds</i>	<i>1,000 Pounds</i>	<i>1,000 Pounds</i>	<i>Percent</i>	<i>Percent</i>
Nonfat Dry Milk, Human	156,177	172,938	175,590	12.4	1.5
	Manufacturers' Stocks End-of-Month ³				
	<i>1,000 Pounds</i>	<i>1,000 Pounds</i>	<i>1,000 Pounds</i>	<i>Percent</i>	<i>Percent</i>
Canned Evaporated and Condensed Whole Milk	78,214	68,733	70,762	-9.5	3.0
Nonfat Dry Milk, Human	147,202	173,698	137,520	-6.6	-20.8
Dry Buttermilk, Total	4,447	13,469	12,392	178.7	-8.0

¹ Revised.

² For dry products, shipments of bulk goods only.

³ Stocks held by manufacturers at all points and in transit.

Procedures and Reliability: Estimates included in this report are based on data provided each month by manufacturers of these products. In 32 States, the State Departments of Agriculture assist in collection of data, which eliminates duplicate reporting and reduces respondent burden. Data are collected by mail, personal and telephone interviews following the close of each month. There were 1,165 manufacturers that made one or more products in 2001. Each month, reports are generally received from all dairy plants in States with small numbers of plants. In States with large numbers of plants, survey procedures are designed to obtain monthly reports from all large plants and from a sample of small plants. Monthly estimates are based upon returns from about 70 percent of the plants which account for 70 to 90 percent of the total production of major dairy products.

Revision Policy: Monthly estimates are subject to revision the month following the preliminary estimates. Annual estimates are published in the "**Dairy Products**" report published each April which includes any revisions made to current and previous year. In preparing the annual report, an attempt is made to get information from all plants.

The next "Dairy Products" report will be released at 3 p.m. ET on October 4, 2002.

The United States Department of Agriculture (USDA) prohibits discrimination in all its programs on the basis of race, color, national origin, gender, religion, age, disability, political beliefs, sexual orientation, and marital or family status. (Not all prohibited bases apply to all programs.) Persons with disabilities who require alternative means for communication of program information (braille, large print, audiotape, etc.) should contact the USDA's TARGET Center at 202-720-2600 (voice and TDD).

To file a complaint of discrimination, write USDA, Director, Office of Civil Rights, Room 326-W, Whitten Building, 1400 Independence Avenue, SW, Washington, D.C., 20250-9410, or call 202-720-5964 (voice or TDD). USDA is an equal opportunity provider and employer.

ACCESS TO REPORTS!!

For your convenience, there are several ways to obtain NASS reports, data products, and services:

INTERNET ACCESS

All NASS reports are available free of charge on the worldwide Internet. For access, connect to the Internet and go to the NASS Home Page at: <http://www.usda.gov/nass/>. Select "Today's Reports" or Publications and then Reports Calendar or Publications and then Search, by Title or Subject.

E-MAIL SUBSCRIPTION

There are two options for subscribing via e-mail. All NASS reports are available by subscription free of charge direct to your e-mail address. 1) Starting with the NASS Home Page at <http://www.usda.gov/nass/>, click on **Publications**, then click on the **Subscribe by E-mail** button which takes you to the page describing e-mail delivery of reports. Finally, click on **Go to the Subscription Page** and follow the instructions. 2) If you do NOT have Internet access, send an e-mail message to: usda-reports@usda.mannlib.cornell.edu. In the body of the message type the word: **list**.

AUTOFAX ACCESS

NASSFax service is available for some reports from your fax machine. Please call 202-720-2000, using the handset attached to your fax. Respond to the voice prompts. Document 0411 is a list of available reports.

PRINTED REPORTS OR DATA PRODUCTS

CALL OUR TOLL-FREE ORDER DESK: 800-999-6779 (U.S. and Canada)
Other areas, please call 703-605-6220 FAX: 703-605-6900
(Visa, MasterCard, check, or money order acceptable for payment.)

ASSISTANCE

For **assistance** with general agricultural statistics or further information about NASS or its products or services, contact the **Agricultural Statistics Hotline** at **800-727-9540**, 7:30 a.m. to 4:00 p.m. ET, or e-mail: nass@nass.usda.gov.
