

Released October 4, 2002, by the National Agricultural Statistics Service (NASS), Agricultural Statistics Board, U.S. Department of Agriculture. For information on "Dairy Products" call Kevin Pautler at (202) 720-9168, office hours 6:45 a.m. to 3:30 p.m. ET.

August 2002 Highlights

Total cheese output (excluding cottage cheese) was 686 million pounds, 3.9 percent above August 2001 and 2.1 percent above July 2002.

American type cheese production totaled 305 million pounds, 8.2 percent above August 2001 and 1.1 percent above July 2002.

Butter production was 88.5 million pounds in August, 17.2 percent above August 2001 but 5.8 percent below July 2002.

Frozen dessert: (comparisons with August 2001)

Ice cream, Regular (hard) --- 78.2 million gallons, down 2.0 percent.

Ice cream, Lowfat (total) --- 36.6 million gallons, down 8.4 percent.

Ice cream, Nonfat (hard) --- 1.46 million gallons, down 20.3 percent.

Sherbet (hard) --- 5.09 million gallons, up 9.4 percent.

Frozen Yogurt (total) --- 7.30 million gallons, down 9.5 percent.

Nonfat dry milk for human food: (compared with August 2001) --- 114 million pounds, up 18.3 percent.

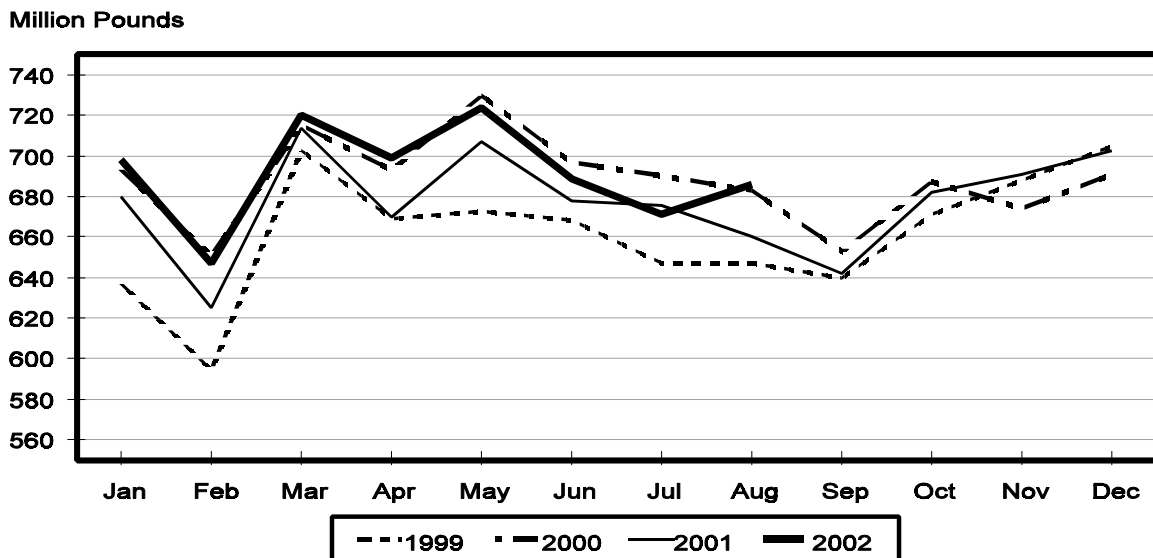
Dry whey products: (comparisons with August 2001)

Dry whey, human --- 87.4 million pounds, up 12.1 percent.

Dry whey, animal --- 5.77 million pounds, up 12.5 percent.

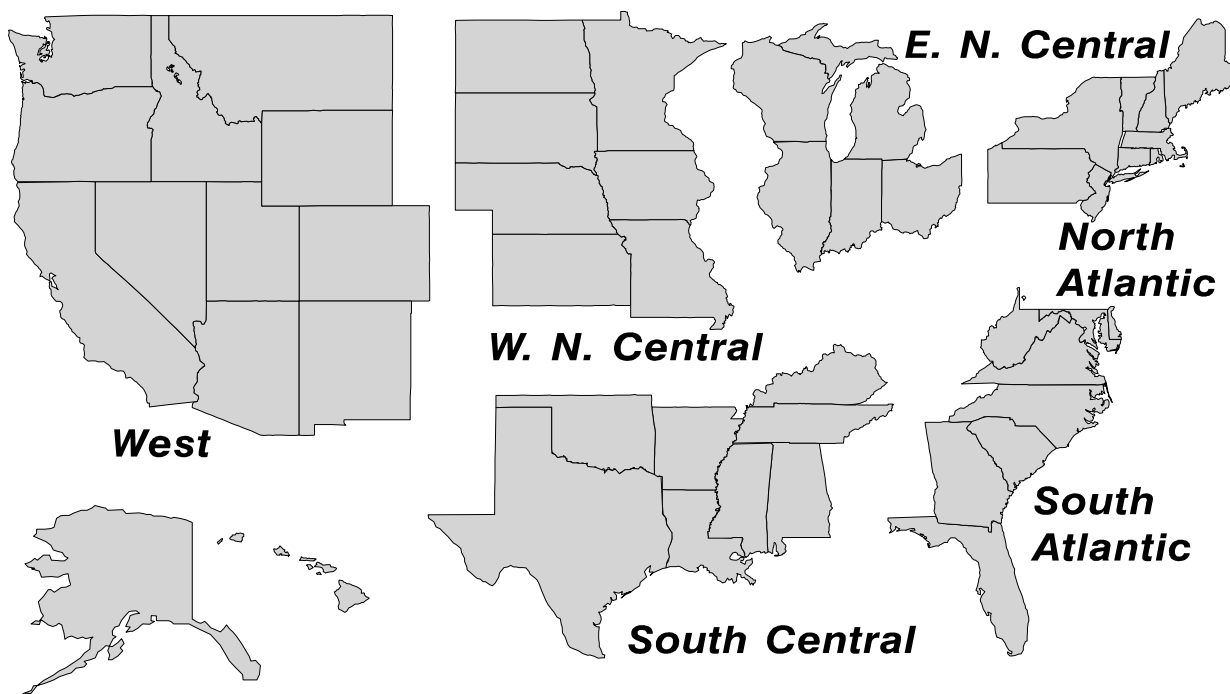
Dry whey, total --- 93.2 million pounds, up 12.1 percent.

Total Cheese Production United States



U. S. Geographic Regions Dairy Products

State totals are not published when fewer than 3 firms have reported or one firm comprises more than 60 percent of the State total. If we are not able to publish a region for confidentiality reasons, it will be combined with other regions when possible. For example, if North Atlantic can not be published, then it will be combined with South Atlantic to publish Atlantic. The West North Central and East North Central will be combined, if necessary, to form North Central. In the event that neither could be published, they may be combined with South Central to publish Central. Some tables will have only limited regions shown, therefore the regions may not add to the United States total.



**Dairy Products: Production by Product,
United States, August, 2001-2002**

Product	Aug 2001	Jul 2002 ¹	Aug 2002	Change From	
				Aug 2001	Jul 2002
	<i>1,000 Pounds</i>	<i>1,000 Pounds</i>	<i>1,000 Pounds</i>	<i>Percent</i>	<i>Percent</i>
Butter	75,557	93,975	88,518	17.2	-5.8
Cheese					
American Types ²	281,527	301,248	304,536	8.2	1.1
Cheddar	216,481	228,334	226,439	4.6	-0.8
Swiss	20,128	20,789	20,891	3.8	0.5
Brick and Muenster	7,822	7,640	7,420	-5.1	-2.9
Cream and Neufchatel	57,550	49,746	57,348	-0.4	15.3
Hispanic	9,169	9,831	10,069	9.8	2.4
Mozzarella	211,184	209,563	212,733	0.7	1.5
Other Italian Types	55,552	54,449	55,353	-0.4	1.7
Total Italian Types	266,736	264,012	268,086	0.5	1.5
All Other Types	17,101	18,009	17,190	0.5	-4.5
Total	660,033	671,275	685,540	3.9	2.1
Cottage Cheese, Curd ³	41,652	39,320	40,380	-3.1	2.7
Cottage Cheese, Cream ⁴	33,575	32,100	33,106	-1.4	3.1
Cottage Cheese, Lowfat ⁵	35,659	34,416	34,802	-2.4	1.1
Canned Evaporated and					
Condensed Whole Milk	41,262	44,383	41,760	1.2	-5.9
Dry Whole Milk	3,543	6,480	3,269	-7.7	-49.6
Nonfat Dry Milk, Human	96,127	123,733	113,673	18.3	-8.1
Dry Skim Milk, Animal	592	801	607	2.5	-24.2
Dry Buttermilk	2,229	3,225	3,213	44.1	-0.4
Yogurt, Plain & Flavored	169,916	181,287	180,156	6.0	-0.6
	<i>1,000 Gallons</i>	<i>1,000 Gallons</i>	<i>1,000 Gallons</i>	<i>Percent</i>	<i>Percent</i>
Frozen Products					
Ice Cream, Hard	79,827	82,404	78,207	-2.0	-5.1
Ice Cream, Lowfat, Hard	8,301	7,757	8,637	4.0	11.3
Ice Cream, Lowfat, Soft	31,677	31,664	27,963	-11.7	-11.7
Ice Cream, Lowfat, Total	39,978	39,421	36,600	-8.4	-7.2
Ice Cream, Nonfat, Hard	1,835	1,500	1,462	-20.3	-2.5
Sherbet, Hard	4,654	5,531	5,093	9.4	-7.9
Water and Juice Ices	5,977	6,866	5,510	-7.8	-19.7
Frozen Yogurt, Total	8,067	7,536	7,300	-9.5	-3.1
Regular & Lowfat, Hard	2,295	2,150	2,097	-8.6	-2.5
Nonfat, Hard	1,189	1,234	1,240	4.3	0.5
Other Frozen Dairy					
Products	972	894	688	-29.2	-23.0
Mix for Frozen Products					
Ice Cream Mix	46,641	48,495	45,740	-1.9	-5.7
Ice Cream, Lowfat, Mix	22,135	21,972	20,344	-8.1	-7.4
Ice Cream, Nonfat, Mix	1,195	887	889	-25.6	0.2
Sherbet Mix	3,533	3,817	3,551	0.5	-7.0
Yogurt Mix	4,038	4,433	4,294	6.3	-3.1

¹ Revised.

² Includes Cheddar, Colby, Monterey, and Jack.

³ Mostly used for processing into cream or lowfat cottage cheese.

⁴ Fat content 4 percent or more.

⁵ Fat content less than 4 percent.

**Whey and Modified Whey Products: Production, Stocks,
and Prices, United States, August, 2001-2002**

Product	Aug 2001	Jul 2002 ¹	Aug 2002	Change From	
				Aug 2001	Jul 2002
Production					
	<i>1,000 Pounds</i>	<i>1,000 Pounds</i>	<i>1,000 Pounds</i>	<i>Percent</i>	<i>Percent</i>
Condensed Whey, Solids Content ²					
Sweet-Type, Human	5,086	6,122	6,810	33.9	11.2
Sweet-Type, Animal	956	674	867	-9.3	28.6
Dry Whey Products					
Dry Whey, Human	77,991	87,660	87,446	12.1	-0.2
Dry Whey, Animal	5,128	5,947	5,771	12.5	-3.0
Dry Whey, Total	83,119	93,607	93,217	12.1	-0.4
Reduced Lactose and Minerals					
Human Food	7,526	8,846	7,358	-2.2	-16.8
Animal Feed	2,956	3,529	3,374	14.1	-4.4
Lactose, Human and Animal	41,460	49,003	48,612	17.3	-0.8
Whey					
Solids in Wet Blends, Animal	3,114	2,424	3,383	8.6	39.6
Protein Concentrate, Human	22,073	27,050	25,903	17.4	-4.2
Protein Concentrate, Animal	3,770	3,142	3,468	-8.0	10.4
Manufacturers' Stocks End-of-Month ³					
	<i>1,000 Pounds</i>	<i>1,000 Pounds</i>	<i>1,000 Pounds</i>	<i>Percent</i>	<i>Percent</i>
Dry Whey Products					
Dry Whey, Human	27,598	30,415	28,762	4.2	-5.4
Dry Whey, Animal	4,405	2,774	2,704	-38.6	-2.5
Reduced Lactose and Minerals					
Human and Animal ⁴	6,519	11,754	11,405	75.0	-3.0
Lactose, Human and Animal	20,653	43,660	38,709	87.4	-11.3
Whey Protein Concentrate, Human	13,583	29,592	24,614	81.2	-16.8
Whey Protein Concentrate, Animal	1,802	1,209	1,281	-28.9	6.0
Manufacturers' Selling Price ⁵					
	<i>Cents per Pound</i>	<i>Cents per Pound</i>	<i>Cents per Pound</i>	<i>Cents Change</i>	<i>Cents Change</i>
Dry Whey, Animal	27.9	13.9	13.7	-14.2	-0.2

¹ Revised.

² Final marketable product only. Does not include quantity used or shipped to another plant for further processing into dry whey or modified whey products.

³ Stocks held by manufacturers at all points and in transit.

⁴ Reduced lactose and minerals stocks combined to avoid disclosure of individual operations.

⁵ Prices for bulk goods, f.o.b. plant. Average monthly prices reported by firms.

**Dairy Products: Production by Product and Month,
United States, 2001-2002 ¹**

Product and Month	By Month			Cumulative		
	2001	2002	Change From 2001	2001	2002	Change From 2001
	<i>1,000 Pounds</i>	<i>1,000 Pounds</i>	<i>Percent</i>	<i>1,000 Pounds</i>	<i>1,000 Pounds</i>	<i>Percent</i>
Total Cheese						
Jan	680,299	697,560	2.5	680,299	697,560	2.5
Feb	625,310	647,091	3.5	1,305,609	1,344,651	3.0
Mar	713,722	719,546	0.8	2,019,331	2,064,197	2.2
Apr	670,221	699,300	4.3	2,689,552	2,763,497	2.7
May	706,790	724,129	2.5	3,396,342	3,487,626	2.7
Jun	678,517	688,985	1.5	4,074,859	4,176,611	2.5
Jul	676,018	671,275	-0.7	4,750,877	4,847,886	2.0
Aug	660,033	685,540	3.9	5,410,910	5,533,426	2.3
Sep	641,785			6,052,695		
Oct	682,080			6,734,775		
Nov	691,229			7,426,004		
Dec	703,090			8,129,094		
American Cheese						
Jan	300,419	315,166	4.9	300,419	315,166	4.9
Feb	270,134	287,383	6.4	570,553	602,549	5.6
Mar	297,097	318,242	7.1	867,650	920,791	6.1
Apr	291,905	316,800	8.5	1,159,555	1,237,591	6.7
May	308,548	326,180	5.7	1,468,103	1,563,771	6.5
Jun	304,618	310,332	1.9	1,772,721	1,874,103	5.7
Jul	293,372	301,248	2.7	2,066,093	2,175,351	5.3
Aug	281,527	304,536	8.2	2,347,620	2,479,887	5.6
Sep	277,046			2,624,666		
Oct	295,991			2,920,657		
Nov	286,276			3,206,933		
Dec	312,229			3,519,162		
Cheddar Cheese						
Jan	236,611	246,156	4.0	236,611	246,156	4.0
Feb	211,627	224,971	6.3	448,238	471,127	5.1
Mar	233,113	249,156	6.9	681,351	720,283	5.7
Apr	229,129	249,284	8.8	910,480	969,567	6.5
May	244,614	256,090	4.7	1,155,094	1,225,657	6.1
Jun	239,366	240,492	0.5	1,394,460	1,466,149	5.1
Jul	230,631	228,334	-1.0	1,625,091	1,694,483	4.3
Aug	216,481	226,439	4.6	1,841,572	1,920,922	4.3
Sep	216,267			2,057,839		
Oct	230,948			2,288,787		
Nov	217,992			2,506,779		
Dec	239,698			2,746,477		

See footnote(s) at end of table.

--continued

**Dairy Products: Production by Product and Month,
United States, 2001-2002 ¹ (continued)**

Product and Month	By Month			Cumulative		
	2001	2002	Change From 2001	2001	2002	Change From 2001
	<i>1,000 Pounds</i>	<i>1,000 Pounds</i>	<i>Percent</i>	<i>1,000 Pounds</i>	<i>1,000 Pounds</i>	<i>Percent</i>
Italian Cheese						
Jan	284,866	282,491	-0.8	284,866	282,491	-0.8
Feb	268,060	265,977	-0.8	552,926	548,468	-0.8
Mar	302,583	293,345	-3.1	855,509	841,813	-1.6
Apr	272,459	277,912	2.0	1,127,968	1,119,725	-0.7
May	286,039	290,499	1.6	1,414,007	1,410,224	-0.3
Jun	269,665	269,376	-0.1	1,683,672	1,679,600	-0.2
Jul	275,857	264,012	-4.3	1,959,529	1,943,612	-0.8
Aug	266,736	268,086	0.5	2,226,265	2,211,698	-0.7
Sep	262,616			2,488,881		
Oct	265,763			2,754,644		
Nov	283,112			3,037,756		
Dec	290,516			3,328,272		
Mozzarella Cheese						
Jan	226,475	224,114	-1.0	226,475	224,114	-1.0
Feb	214,507	213,429	-0.5	440,982	437,543	-0.8
Mar	238,805	234,689	-1.7	679,787	672,232	-1.1
Apr	215,432	220,483	2.3	895,219	892,715	-0.3
May	230,249	233,630	1.5	1,125,468	1,126,345	0.1
Jun	222,013	217,931	-1.8	1,347,481	1,344,276	-0.2
Jul	224,953	209,563	-6.8	1,572,434	1,553,839	-1.2
Aug	211,184	212,733	0.7	1,783,618	1,766,572	-1.0
Sep	212,654			1,996,272		
Oct	214,476			2,210,748		
Nov	224,558			2,435,306		
Dec	230,443			2,665,749		
Other Italian						
Jan	58,391	58,377		58,391	58,377	
Feb	53,553	52,548	-1.9	111,944	110,925	-0.9
Mar	63,778	58,656	-8.0	175,722	169,581	-3.5
Apr	57,027	57,429	0.7	232,749	227,010	-2.5
May	55,790	56,869	1.9	288,539	283,879	-1.6
Jun	47,652	51,445	8.0	336,191	335,324	-0.3
Jul	50,904	54,449	7.0	387,095	389,773	0.7
Aug	55,552	55,353	-0.4	442,647	445,126	0.6
Sep	49,962			492,609		
Oct	51,287			543,896		
Nov	58,554			602,450		
Dec	60,073			662,523		

See footnote(s) at end of table.

--continued

**Dairy Products: Production by Product and Month,
United States, 2001-2002 ¹ (continued)**

Product and Month	By Month			Cumulative		
	2001	2002	Change From 2001	2001	2002	Change From 2001
	<i>1,000 Pounds</i>	<i>1,000 Pounds</i>	<i>Percent</i>	<i>1,000 Pounds</i>	<i>1,000 Pounds</i>	<i>Percent</i>
Butter						
Jan	127,356	140,687	10.5	127,356	140,687	10.5
Feb	111,809	125,352	12.1	239,165	266,039	11.2
Mar	111,374	128,966	15.8	350,539	395,005	12.7
Apr	108,975	132,406	21.5	459,514	527,411	14.8
May	111,001	126,533	14.0	570,515	653,944	14.6
Jun	86,783	96,905	11.7	657,298	750,849	14.2
Jul	84,210	93,975	11.6	741,508	844,824	13.9
Aug	75,557	88,518	17.2	817,065	933,342	14.2
Sep	86,721			903,786		
Oct	109,911			1,013,697		
Nov	100,079			1,113,776		
Dec	123,025			1,236,801		
Nonfat Dry Milk, Human						
Jan	118,299	118,892	0.5	118,299	118,892	0.5
Feb	119,068	125,838	5.7	237,367	244,730	3.1
Mar	121,080	147,761	22.0	358,447	392,491	9.5
Apr	131,695	158,291	20.2	490,142	550,782	12.4
May	140,423	158,062	12.6	630,565	708,844	12.4
Jun	131,455	147,643	12.3	762,020	856,487	12.4
Jul	117,452	123,733	5.3	879,472	980,220	11.5
Aug	96,127	113,673	18.3	975,599	1,093,893	12.1
Sep	94,396			1,069,995		
Oct	105,788			1,175,783		
Nov	107,211			1,282,994		
Dec	130,805			1,413,799		
Total Dry Whey ²						
Jan	88,994	90,205	1.4	88,994	90,205	1.4
Feb	84,053	85,878	2.2	173,047	176,083	1.8
Mar	93,241	96,495	3.5	266,288	272,578	2.4
Apr	89,600	93,981	4.9	355,888	366,559	3.0
May	94,120	98,373	4.5	450,008	464,932	3.3
Jun	91,432	93,814	2.6	541,440	558,746	3.2
Jul	92,044	93,607	1.7	633,484	652,353	3.0
Aug	83,119	93,217	12.1	716,603	745,570	4.0
Sep	76,322			792,925		
Oct	79,617			872,542		
Nov	82,295			954,837		
Dec	90,955			1,045,792		

See footnote(s) at end of table.

--continued

**Dairy Products: Production by Product and Month,
United States, 2001-2002 ¹ (continued)**

Product and Month	By Month			Cumulative		
	2001	2002	Change From 2001	2001	2002	Change From 2001
	<i>1,000 Pounds</i>	<i>1,000 Pounds</i>	<i>Percent</i>	<i>1,000 Pounds</i>	<i>1,000 Pounds</i>	<i>Percent</i>
Cream Cottage Cheese						
Jan	31,088	29,765	-4.3	31,088	29,765	-4.3
Feb	28,137	28,788	2.3	59,225	58,553	-1.1
Mar	32,915	31,520	-4.2	92,140	90,073	-2.2
Apr	29,684	30,502	2.8	121,824	120,575	-1.0
May	33,883	32,554	-3.9	155,707	153,129	-1.7
Jun	31,283	30,388	-2.9	186,990	183,517	-1.9
Jul	32,521	32,100	-1.3	219,511	215,617	-1.8
Aug	33,575	33,106	-1.4	253,086	248,723	-1.7
Sep	29,825			282,911		
Oct	31,324			314,235		
Nov	29,778			344,013		
Dec	27,512			371,525		
Lowfat Cottage Cheese						
Jan	30,262	29,609	-2.2	30,262	29,609	-2.2
Feb	28,858	30,006	4.0	59,120	59,615	0.8
Mar	32,994	32,509	-1.5	92,114	92,124	
Apr	29,825	30,524	2.3	121,939	122,648	0.6
May	35,011	34,477	-1.5	156,950	157,125	0.1
Jun	30,705	29,559	-3.7	187,655	186,684	-0.5
Jul	31,387	34,416	9.7	219,042	221,100	0.9
Aug	35,659	34,802	-2.4	254,701	255,902	0.5
Sep	29,764			284,465		
Oct	31,192			315,657		
Nov	28,402			344,059		
Dec	26,825			370,884		
	<i>1,000 Gallons</i>	<i>1,000 Gallons</i>	<i>Percent</i>	<i>1,000 Gallons</i>	<i>1,000 Gallons</i>	<i>Percent</i>
Ice Cream, Hard						
Jan	67,446	70,004	3.8	67,446	70,004	3.8
Feb	67,583	71,034	5.1	135,029	141,038	4.5
Mar	77,071	76,680	-0.5	212,100	217,718	2.6
Apr	78,501	80,214	2.2	290,601	297,932	2.5
May	80,467	76,953	-4.4	371,068	374,885	1.0
Jun	84,752	81,127	-4.3	455,820	456,012	
Jul	82,043	82,404	0.4	537,863	538,416	0.1
Aug	79,827	78,207	-2.0	617,690	616,623	-0.2
Sep	70,197			687,887		
Oct	67,595			755,482		
Nov	59,123			814,605		
Dec	54,548			869,153		

See footnote(s) at end of table.

--continued

**Dairy Products: Production by Product and Month,
United States, 2001-2002 ¹ (continued)**

Product and Month	By Month			Cumulative		
	2001	2002	Change From 2001	2001	2002	Change From 2001
	<i>1,000 Gallons</i>	<i>1,000 Gallons</i>	<i>Percent</i>	<i>1,000 Gallons</i>	<i>1,000 Gallons</i>	<i>Percent</i>
Ice Cream, Lowfat						
Jan	26,825	22,119	-17.5	26,825	22,119	-17.5
Feb	27,510	24,976	-9.2	54,335	47,095	-13.3
Mar	35,206	31,620	-10.2	89,541	78,715	-12.1
Apr	36,974	36,060	-2.5	126,515	114,775	-9.3
May	41,675	38,960	-6.5	168,190	153,735	-8.6
Jun	43,893	39,773	-9.4	212,083	193,508	-8.8
Jul	41,495	39,421	-5.0	253,578	232,929	-8.1
Aug	39,978	36,600	-8.4	293,556	269,529	-8.2
Sep	31,511			325,067		
Oct	30,776			355,843		
Nov	25,239			381,082		
Dec	25,664			406,746		
Ice Cream, NF, Hard						
Jan	1,369	2,074	51.5	1,369	2,074	51.5
Feb	1,451	1,610	11.0	2,820	3,684	30.6
Mar	1,712	2,034	18.8	4,532	5,718	26.2
Apr	1,558	1,561	0.2	6,090	7,279	19.5
May	1,789	1,543	-13.8	7,879	8,822	12.0
Jun	2,082	1,415	-32.0	9,961	10,237	2.8
Jul	1,655	1,500	-9.4	11,616	11,737	1.0
Aug	1,835	1,462	-20.3	13,451	13,199	-1.9
Sep	1,694			15,145		
Oct	1,490			16,635		
Nov	1,333			17,968		
Dec	1,204			19,172		
Sherbet, Hard						
Jan	3,552	3,796	6.9	3,552	3,796	6.9
Feb	3,858	4,050	5.0	7,410	7,846	5.9
Mar	4,494	4,786	6.5	11,904	12,632	6.1
Apr	4,227	5,127	21.3	16,131	17,759	10.1
May	5,150	5,417	5.2	21,281	23,176	8.9
Jun	5,310	5,475	3.1	26,591	28,651	7.7
Jul	5,037	5,531	9.8	31,628	34,182	8.1
Aug	4,654	5,093	9.4	36,282	39,275	8.2
Sep	3,731			40,013		
Oct	3,575			43,588		
Nov	3,010			46,598		
Dec	2,870			49,468		

See footnote(s) at end of table.

--continued

**Dairy Products: Production by Product and Month,
United States, 2001-2002¹ (continued)**

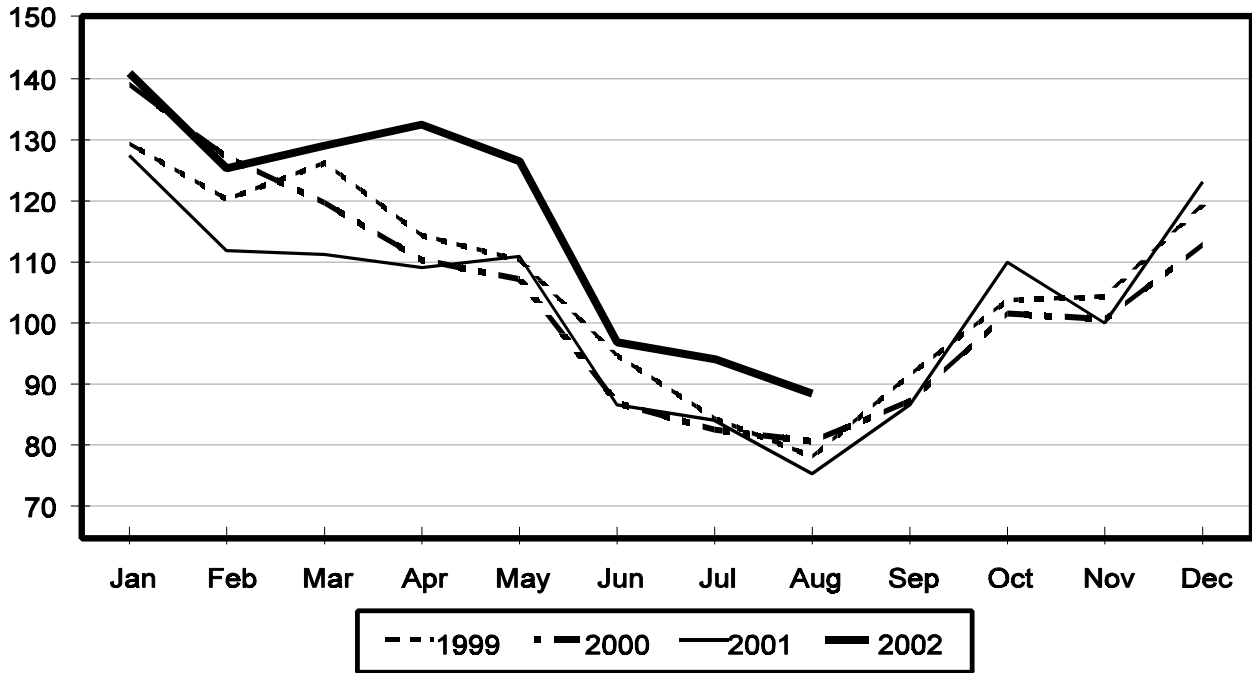
Product and Month	By Month			Cumulative		
	2001	2002	Change From 2001	2001	2002	Change From 2001
	<i>1,000 Gallons</i>	<i>1,000 Gallons</i>	<i>Percent</i>	<i>1,000 Gallons</i>	<i>1,000 Gallons</i>	<i>Percent</i>
Frozen Yogurt						
Jan	6,516	5,976	-8.3	6,516	5,976	-8.3
Feb	5,939	6,348	6.9	12,455	12,324	-1.1
Mar	7,388	6,900	-6.6	19,843	19,224	-3.1
Apr	6,970	6,878	-1.3	26,813	26,102	-2.7
May	7,886	7,443	-5.6	34,699	33,545	-3.3
Jun	7,755	6,985	-9.9	42,454	40,530	-4.5
Jul	7,370	7,536	2.3	49,824	48,066	-3.5
Aug	8,067	7,300	-9.5	57,891	55,366	-4.4
Sep	5,895			63,786		
Oct	5,887			69,673		
Nov	5,329			75,002		
Dec	4,597			79,599		

¹ July 2002 data revised.

² Excludes all modified dry whey products.

Total Butter Production United States

Million Pounds



**Total Cheese, Excluding Cottage Cheese: Production by
State and United States, August 2001-2002**

State	Aug 2001	Jul ¹ 2002	Aug 2002	Change From	
				Aug 2001	Jul 2002
	<i>1,000 Pounds</i>	<i>1,000 Pounds</i>	<i>1,000 Pounds</i>	<i>Percent</i>	<i>Percent</i>
CA	134,910	140,244	143,799	6.6	2.5
ID	47,957	49,370	58,524	22.0	18.5
IL	8,627	7,846	7,680	-11.0	-2.1
IA	20,965	22,583	22,235	6.1	-1.5
MA	76	120	65	-14.5	-45.8
MN	43,331	45,718	44,189	2.0	-3.3
MO	8,272	8,575	8,576	3.7	0.0
NY	58,916	55,344	57,318	-2.7	3.6
OH	11,334	12,153	11,564	2.0	-4.8
PA	27,013	29,729	28,496	5.5	-4.1
SD	12,256	12,463	13,739	12.1	10.2
UT	5,149	6,011	6,218	20.8	3.4
WA	12,910	12,685	12,599	-2.4	-0.7
WI	176,566	174,686	181,337	2.7	3.8
Oth Sts ²	91,751	93,748	89,201	-2.8	-4.9
US	660,033	671,275	685,540	3.9	2.1
N Atlantic	101,819	99,665	101,136	-0.7	1.5
S Atlantic	3,263	3,447	3,046	-6.7	-11.6
E N Central	208,459	207,936	212,547	2.0	2.2
W N Central	93,801	97,166	95,612	1.9	-1.6
S Central	3,924	5,632	6,265	59.7	11.2
West	248,767	257,429	266,934	7.3	3.7

¹ Revised.

² States not shown when fewer than 3 plants reported or individual plant operations could be disclosed. Percent change shown only when comparable States are included in the calculation.

American Cheese: Production by State and United States, August 2001-2002

State	Aug 2001	Jul ¹ 2002	Aug 2002	Change From	
				Aug 2001	Jul 2002
	<i>1,000 Pounds</i>	<i>1,000 Pounds</i>	<i>1,000 Pounds</i>	<i>Percent</i>	<i>Percent</i>
CA	59,030	64,983	65,092	10.3	0.2
ID	39,895	41,385	45,518	14.1	10.0
IA	10,151	11,199	11,423	12.5	2.0
MN	40,903	43,641	42,537	4.0	-2.5
NY	7,648	8,115	7,039	-8.0	-13.3
OH	2,000	2,405	2,288	14.4	-4.9
OR	5,805	7,971	8,190	41.1	2.7
SD	6,876	6,243	6,656	-3.2	6.6
WA	12,420	12,657	12,573	1.2	-0.7
WI	65,463	69,570	70,700	8.0	1.6
Oth Sts ²	31,336	33,079	32,520	3.8	-1.7
US	281,527	301,248	304,536	8.2	1.1
Atlantic	13,832	13,353	11,863	-14.2	-11.2
E N Central	68,781	73,379	74,461	8.3	1.5
W N Central	59,341	62,216	61,581	3.8	-1.0
S Central	3,422	3,672	3,673	7.3	0.0
West	136,151	148,628	152,958	12.3	2.9

¹ Revised.

² States not shown when fewer than 3 plants reported or individual plant operations could be disclosed. Percent change shown only when comparable States are included in the calculation.

Cheddar Cheese: Production by State and United States, August 2001-2002

State	Aug 2001	Jul ¹ 2002	Aug 2002	Change From	
				Aug 2001	Jul 2002
	<i>1,000 Pounds</i>	<i>1,000 Pounds</i>	<i>1,000 Pounds</i>	<i>Percent</i>	<i>Percent</i>
CA	44,095	43,710	45,754	3.8	4.7
ID	19,356	19,772	18,509	-4.4	-6.4
MN	38,113	40,914	39,639	4.0	-3.1
NY	7,591	8,025	6,979	-8.1	-13.0
SD	4,812	3,822	4,244	-11.8	11.0
WA	10,093	10,402	10,204	1.1	-1.9
WI	50,408	56,200	56,200	11.5	0.0
Oth Sts ²	42,013	45,489	44,910	6.9	-1.3
US	216,481	228,334	226,439	4.6	-0.8
Atlantic	13,516	13,114	11,651	-13.8	-11.2
E N Cen	52,048	58,355	58,088	11.6	-0.5
W N Cen	49,725	51,447	50,475	1.5	-1.9
S Cen	3,422	3,672	3,673	7.3	0.0
West	97,770	101,746	102,552	4.9	0.8

¹ Revised.

² States not shown when fewer than 3 plants reported or individual plant operations could be disclosed. Percent change shown only when comparable States are included in the calculation.

Mozzarella Cheese: Production by State and United States, August 2001-2002

State	Aug 2001	Jul ¹ 2002	Aug 2002	Change From	
				Aug 2001	Jul 2002
	<i>1,000 Pounds</i>	<i>1,000 Pounds</i>	<i>1,000 Pounds</i>	<i>Percent</i>	<i>Percent</i>
CA	55,156	58,269	61,286	11.1	5.2
NY	20,129	16,217	16,984	-15.6	4.7
WI	59,068	59,000	61,600	4.3	4.4
Oth Sts ²	76,831	76,077	72,863	-5.2	-4.2
US	211,184	209,563	212,733	0.7	1.5
Atlantic ³	41,348	39,113	39,318	-4.9	0.5
E N Central	69,733	70,870	71,931	3.2	1.5
West	84,002	84,200	86,519	3.0	2.8

¹ Revised.

² States not shown when fewer than 3 plants reported or individual plant operations could be disclosed. Percent change shown only when comparable States are included in the calculation.

³ Region totals may not add to U.S. when compiled regions could not be disclosed.

Butter: Production by State and United States, August 2001-2002

State	Aug 2001	Jul ¹ 2002	Aug 2002	Change From	
				Aug 2001	Jul 2002
	<i>1,000 Pounds</i>	<i>1,000 Pounds</i>	<i>1,000 Pounds</i>	<i>Percent</i>	<i>Percent</i>
CA	22,978	27,865	30,046	30.8	7.8
NY	1,153	1,997	1,712	48.5	-14.3
PA	4,457	5,264	4,259	-4.4	-19.1
WA	9,269	8,987	8,890	-4.1	-1.1
WI	19,639	23,102	21,200	7.9	-8.2
Oth Sts ²	18,061	26,760	22,411	24.1	-16.3
US	75,557	93,975	88,518	17.2	-5.8
N Atlantic ³	6,320	9,662	7,863	24.4	-18.6
E N Central	21,899	25,318	23,831	8.8	-5.9
W N Central	6,243	7,942	6,845	9.6	-13.8
West	36,479	42,039	43,959	20.5	4.6

¹ Revised.

² States not shown when fewer than 3 plants reported or individual plant operations could be disclosed. Percent change shown only when comparable States are included in the calculation.

³ Region totals may not add to U.S. when compiled regions could not be disclosed.

**Nonfat Dry Milk, Human: Production by State
and United States, August 2001-2002**

State	Aug 2001	Jul ¹ 2002	Aug 2002	Change From	
				Aug 2001	Jul 2002
	<i>1,000 Pounds</i>	<i>1,000 Pounds</i>	<i>1,000 Pounds</i>	<i>Percent</i>	<i>Percent</i>
CA	54,858	59,319	57,149	4.2	-3.7
ID	8,157	8,110	8,681	6.4	7.0
WA	16,239	17,204	16,643	2.5	-3.3
Oth Sts ²	16,873	39,100	31,200	84.9	-20.2
US	96,127	123,733	113,673	18.3	-8.1
Atlantic	5,027	11,605	7,244	44.1	-37.6
E N Central	1,354	3,958	3,379	149.6	-14.6
W N Central	3,990	5,822	5,806	45.5	-0.3
S Central	957	4,266	1,972	106.1	-53.8
West	84,799	98,082	95,272	12.4	-2.9

¹ Revised.

² States not shown when fewer than 3 plants reported or individual plant operations could be disclosed. Percent change shown only when comparable States are included in the calculation.

**Dry Whey, Human: Production by State
and United States, August 2001-2002**

State	Aug 2001	Jul ¹ 2002	Aug 2002	Change From	
				Aug 2001	Jul 2002
	<i>1,000 Pounds</i>	<i>1,000 Pounds</i>	<i>1,000 Pounds</i>	<i>Percent</i>	<i>Percent</i>
CA	11,152	12,891	12,467	11.8	-3.3
MN	5,436	6,283	5,760	6.0	-8.3
NY	9,950	10,287	10,184	2.4	-1.0
PA	6,537	9,963	8,969	37.2	-10.0
WA	7,138	8,355	8,854	24.0	6.0
WI	22,540	24,716	25,924	15.0	4.9
Oth Sts ²	15,238	15,165	15,288	0.3	0.8
US	77,991	87,660	87,446	12.1	-0.2
Atlantic	16,487	20,250	19,153	16.2	-5.4
Central	39,262	42,121	42,543	8.4	1.0
West	22,242	25,289	25,750	15.8	1.8

¹ Revised.

² States not shown when fewer than 3 plants reported or individual plant operations could be disclosed. Percent change shown only when comparable States are included in the calculation.

Ice Cream, Hard: Production by State and United States, August 2001-2002

State	Aug 2001	Jul ¹ 2002	Aug 2002	Change From	
				Aug 2001	Jul 2002
	<i>1,000 Gallons</i>	<i>1,000 Gallons</i>	<i>1,000 Gallons</i>	<i>Percent</i>	<i>Percent</i>
CA	12,585	12,465	11,270	-10.4	-9.6
FL	2,067	2,000	1,900	-8.1	-5.0
IL	3,471	2,850	3,033	-12.6	6.4
IN	6,513	6,954	6,359	-2.4	-8.6
MD	1,895	1,934	1,893	-0.1	-2.1
MA	5,703	6,807	6,501	14.0	-4.5
MI	2,233	2,058	1,938	-13.2	-5.8
MN	3,890	4,058	3,912	0.6	-3.6
NH	24	24	25	4.2	4.2
NY	2,692	3,000	3,000	11.4	
NC	1,431	2,031	1,596	11.5	-21.4
OH	3,360	2,964	2,917	-13.2	-1.6
OR	1,207	1,390	1,220	1.1	-12.2
PA	4,251	4,758	4,556	7.2	-4.2
SD	3	5	3		-40.0
TN	1,616	1,082	1,096	-32.2	1.3
TX	4,915	4,778	4,599	-6.4	-3.7
UT	1,205	1,384	1,116	-7.4	-19.4
WA	1,268	1,718	1,409	11.1	-18.0
Oth Sts ²	19,498	20,144	19,864	1.9	-1.4
US	79,827	82,404	78,207	-2.0	-5.1
N Atlantic	15,641	17,425	16,780	7.3	-3.7
S Atlantic	6,872	7,508	7,051	2.6	-6.1
E N Central	16,525	15,966	15,299	-7.4	-4.2
W N Central	11,640	11,962	11,641		-2.7
S Central	10,214	9,660	9,222	-9.7	-4.5
West	18,935	19,883	18,214	-3.8	-8.4

¹ Revised.

² States not shown when fewer than 3 plants reported or individual plant operations could be disclosed. Percent change shown only when comparable States are included in the calculation.

**Canned Milk and Dry Milk Products: Manufacturers' Shipments,
Stocks, and Selling Prices, August, 2001-2002**

Product	Aug 2001	Jul 2002 ¹	Aug 2002	Change From	
				Aug 2001	Jul 2002
	Manufacturers' Shipments ²				
	<i>1,000 Pounds</i>	<i>1,000 Pounds</i>	<i>1,000 Pounds</i>	<i>Percent</i>	<i>Percent</i>
Nonfat Dry Milk, Human	156,993	172,547	172,720	10.0	0.1
	Manufacturers' Stocks End-of-Month ³				
	<i>1,000 Pounds</i>	<i>1,000 Pounds</i>	<i>1,000 Pounds</i>	<i>Percent</i>	<i>Percent</i>
Canned Evaporated and Condensed Whole Milk	79,532	80,048	89,976	13.1	12.4
Nonfat Dry Milk, Human	108,956	137,767	106,634	-2.1	-22.6
Dry Buttermilk, Total	3,436	12,527	10,217	197.4	-18.4

¹ Revised.

² For dry products, shipments of bulk goods only.

³ Stocks held by manufacturers at all points and in transit.

Procedures and Reliability: Estimates included in this report are based on data provided each month by manufacturers of these products. In 32 States, the State Departments of Agriculture assist in collection of data, which eliminates duplicate reporting and reduces respondent burden. Data are collected by mail, personal and telephone interviews following the close of each month. There were 1,165 manufacturers that made one or more products in 2001. Each month, reports are generally received from all dairy plants in States with small numbers of plants. In States with large numbers of plants, survey procedures are designed to obtain monthly reports from all large plants and from a sample of small plants. Monthly estimates are based upon returns from about 70 percent of the plants which account for 70 to 90 percent of the total production of major dairy products.

Revision Policy: Monthly estimates are subject to revision the month following the preliminary estimates. Annual estimates are published in the "**Dairy Products**" report published each April which includes any revisions made to current and previous year. In preparing the annual report, an attempt is made to get information from all plants.

The next "Dairy Products" report will be released at 3 p.m. ET on November 4, 2002.

The United States Department of Agriculture (USDA) prohibits discrimination in all its programs on the basis of race, color, national origin, gender, religion, age, disability, political beliefs, sexual orientation, and marital or family status. (Not all prohibited bases apply to all programs.) Persons with disabilities who require alternative means for communication of program information (braille, large print, audiotape, etc.) should contact the USDA's TARGET Center at 202-720-2600 (voice and TDD).

To file a complaint of discrimination, write USDA, Director, Office of Civil Rights, Room 326-W, Whitten Building, 1400 Independence Avenue, SW, Washington, D.C., 20250-9410, or call 202-720-5964 (voice or TDD). USDA is an equal opportunity provider and employer.

ACCESS TO REPORTS!!

For your convenience, there are several ways to obtain NASS reports, data products, and services:

INTERNET ACCESS

All NASS reports are available free of charge on the worldwide Internet. For access, connect to the Internet and go to the NASS Home Page at: <http://www.usda.gov/nass/>. Select "Today's Reports" or Publications and then Reports Calendar or Publications and then Search, by Title or Subject.

E-MAIL SUBSCRIPTION

There are two options for subscribing via e-mail. All NASS reports are available by subscription free of charge direct to your e-mail address. 1) Starting with the NASS Home Page at <http://www.usda.gov/nass/>, click on **Publications**, then click on the **Subscribe by E-mail** button which takes you to the page describing e-mail delivery of reports. Finally, click on **Go to the Subscription Page** and follow the instructions. 2) If you do NOT have Internet access, send an e-mail message to: usda-reports@usda.mannlib.cornell.edu. In the body of the message type the word: **list**.

AUTOFAX ACCESS

NASSFax service is available for some reports from your fax machine. Please call 202-720-2000, using the handset attached to your fax. Respond to the voice prompts. Document 0411 is a list of available reports.

PRINTED REPORTS OR DATA PRODUCTS

CALL OUR TOLL-FREE ORDER DESK: 800-999-6779 (U.S. and Canada)
Other areas, please call 703-605-6220 FAX: 703-605-6900
(Visa, MasterCard, check, or money order acceptable for payment.)

ASSISTANCE

For **assistance** with general agricultural statistics or further information about NASS or its products or services, contact the **Agricultural Statistics Hotline** at **800-727-9540**, 7:30 a.m. to 4:00 p.m. ET, or e-mail: nass@nass.usda.gov.
