

Released November 4, 2002, by the National Agricultural Statistics Service (NASS), Agricultural Statistics Board, U.S. Department of Agriculture. For information on "Dairy Products" call Kevin Pautler at (202) 720-9168, office hours 6:45 a.m. to 3:30 p.m. ET.

September 2002 Highlights

Total cheese output (excluding cottage cheese) was 658 million pounds, 2.5 percent above September 2001 but 4.3 percent below August 2002.

American type cheese production totaled 287 million pounds, 3.5 percent above September 2001 but 6.2 percent below August 2002.

Butter production was 92.2 million pounds in September, 6.3 percent above September 2001 and 4.1 percent above August 2002.

Frozen dessert: (comparisons with September 2001)

Ice cream, Regular (hard) --- 70.3 million gallons, up 0.2 percent.

Ice cream, Lowfat (total) --- 31.5 million gallons, down slightly.

Ice cream, Nonfat (hard) --- 1.38 million gallons, down 18.8 percent.

Sherbet (hard) --- 4.09 million gallons, up 9.5 percent.

Frozen Yogurt (total) --- 6.62 million gallons, up 12.3 percent.

Nonfat dry milk for human food: (compared with September 2001) --- 93.8 million pounds, down 1 percent.

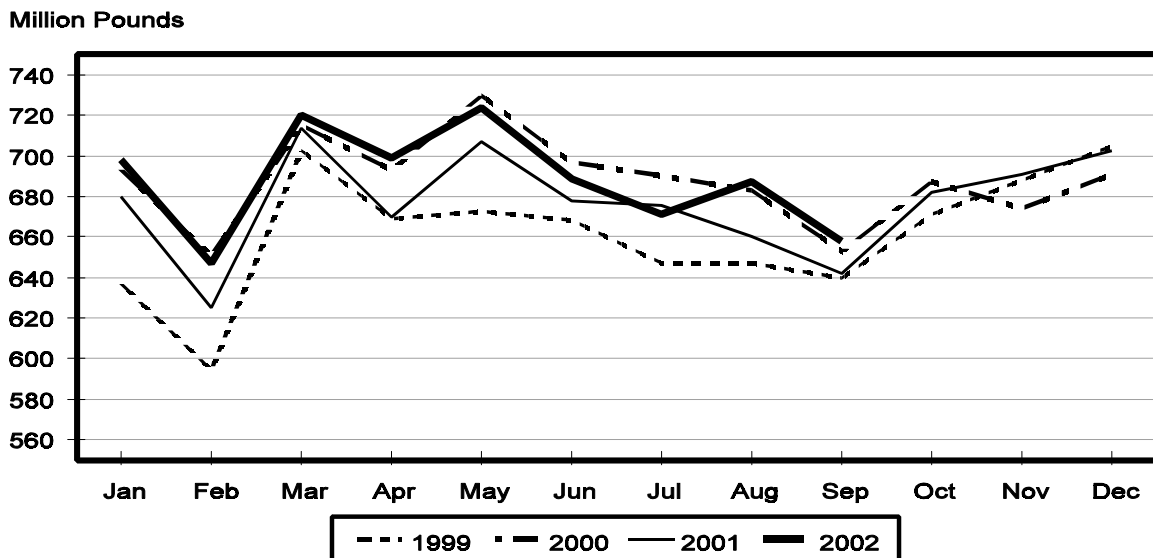
Dry whey products: (comparisons with September 2001)

Dry whey, human --- 84.0 million pounds, up 16.9 percent.

Dry whey, animal --- 5.13 million pounds, up 14.5 percent.

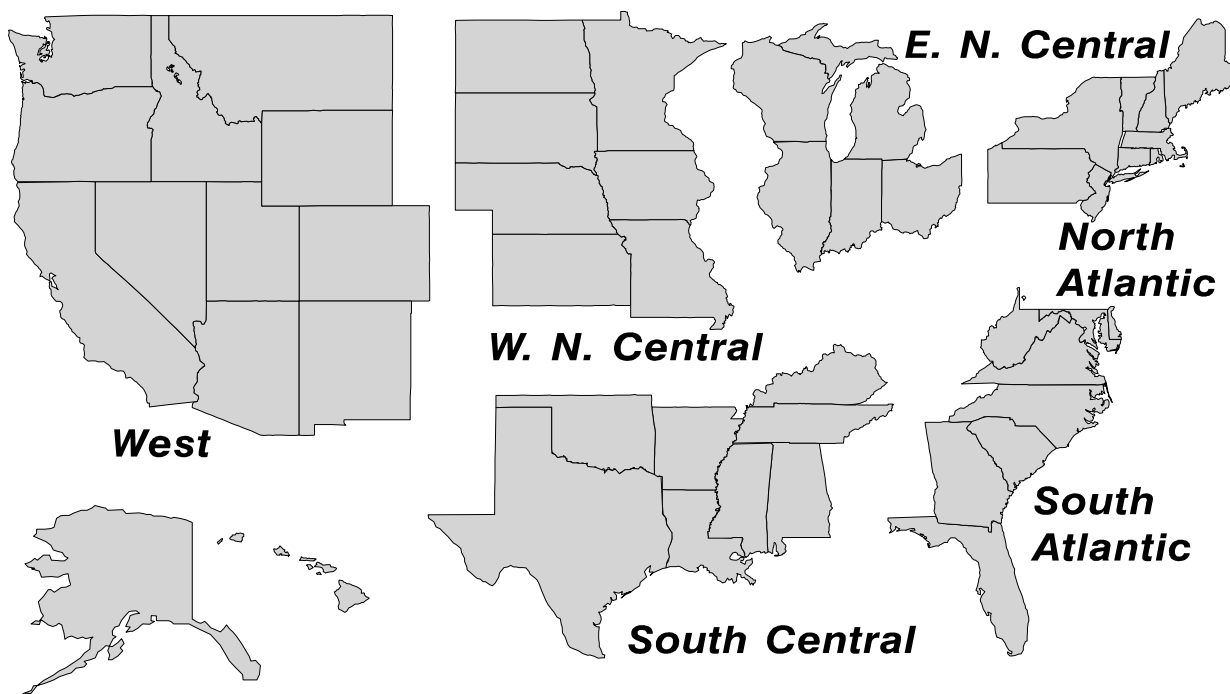
Dry whey, total --- 89.1 million pounds, up 16.7 percent.

Total Cheese Production United States



U. S. Geographic Regions Dairy Products

State totals are not published when fewer than 3 firms have reported or one firm comprises more than 60 percent of the State total. If we are not able to publish a region for confidentiality reasons, it will be combined with other regions when possible. For example, if North Atlantic can not be published, then it will be combined with South Atlantic to publish Atlantic. The West North Central and East North Central will be combined, if necessary, to form North Central. In the event that neither could be published, they may be combined with South Central to publish Central. Some tables will have only limited regions shown, therefore the regions may not add to the United States total.



**Dairy Products: Production by Product,
United States, September, 2001-2002**

Product	Sep 2001	Aug 2002 ¹	Sep 2002	Change From	
				Sep 2001	Aug 2002
	<i>1,000 Pounds</i>	<i>1,000 Pounds</i>	<i>1,000 Pounds</i>	<i>Percent</i>	<i>Percent</i>
Butter	86,721	88,512	92,166	6.3	4.1
Cheese					
American Types ²	277,046	305,826	286,822	3.5	-6.2
Cheddar	216,267	227,667	214,067	-1.0	-6.0
Swiss	19,806	20,941	21,135	6.7	0.9
Brick and Muenster	7,102	7,421	7,556	6.4	1.8
Cream and Neufchatel	50,176	57,127	56,064	11.7	-1.9
Hispanic	8,503	10,068	10,050	18.2	-0.2
Mozzarella	212,654	212,876	207,573	-2.4	-2.5
Other Italian Types	49,962	55,762	51,612	3.3	-7.4
Total Italian Types	262,616	268,638	259,185	-1.3	-3.5
All Other Types	16,536	17,398	17,173	3.9	-1.3
Total	641,785	687,419	657,985	2.5	-4.3
Cottage Cheese, Curd ³	36,881	40,513	38,625	4.7	-4.7
Cottage Cheese, Cream ⁴	29,825	33,145	31,702	6.3	-4.4
Cottage Cheese, Lowfat ⁵	29,764	34,922	31,972	7.4	-8.4
Canned Evaporated and					
Condensed Whole Milk	42,167	41,760	35,533	-15.7	-14.9
Dry Whole Milk	3,267	3,269	4,823	47.6	47.5
Nonfat Dry Milk, Human	94,396	114,408	93,824	-0.6	-18.0
Dry Skim Milk, Animal	437	608	478	9.4	-21.4
Dry Buttermilk	2,736	3,213	2,990	9.3	-6.9
Yogurt, Plain & Flavored	184,210	181,175	189,268	2.7	4.5
	<i>1,000 Gallons</i>	<i>1,000 Gallons</i>	<i>1,000 Gallons</i>	<i>Percent</i>	<i>Percent</i>
Frozen Products					
Ice Cream, Hard	70,197	78,039	70,323	0.2	-9.9
Ice Cream, Lowfat, Hard	7,198	8,538	7,462	3.7	-12.6
Ice Cream, Lowfat, Soft	24,313	28,273	24,025	-1.2	-15.0
Ice Cream, Lowfat, Total	31,511	36,811	31,487	-0.1	-14.5
Ice Cream, Nonfat, Hard	1,694	1,462	1,376	-18.8	-5.9
Sherbet, Hard	3,731	5,094	4,085	9.5	-19.8
Water and Juice Ices	4,417	5,490	4,084	-7.5	-25.6
Frozen Yogurt, Total	5,895	7,031	6,620	12.3	-5.8
Regular & Lowfat, Hard	1,972	1,951	1,866	-5.4	-4.4
Nonfat, Hard	1,123	1,211	1,189	5.9	-1.8
Other Frozen Dairy					
Products	805	688	640	-20.5	-7.0
Mix for Frozen Products					
Ice Cream Mix	39,548	45,982	42,705	8.0	-7.1
Ice Cream, Lowfat, Mix	17,086	20,467	17,501	2.4	-14.5
Ice Cream, Nonfat, Mix	1,067	901	925	-13.3	2.7
Sherbet Mix	2,667	3,489	2,999	12.4	-14.0
Yogurt Mix	3,154	4,136	3,894	23.5	-5.9

¹ Revised.

² Includes Cheddar, Colby, Monterey, and Jack.

³ Mostly used for processing into cream or lowfat cottage cheese.

⁴ Fat content 4 percent or more.

⁵ Fat content less than 4 percent.

**Whey and Modified Whey Products: Production, Stocks,
and Prices, United States, September, 2001-2002**

Product	Sep 2001	Aug 2002 ¹	Sep 2002	Change From	
				Sep 2001	Aug 2002
Production					
	<i>1,000 Pounds</i>	<i>1,000 Pounds</i>	<i>1,000 Pounds</i>	<i>Percent</i>	<i>Percent</i>
Condensed Whey, Solids Content ²					
Sweet-Type, Human	5,247	6,810	6,953	32.5	2.1
Sweet-Type, Animal	885	867	741	-16.3	-14.5
Dry Whey Products					
Dry Whey, Human	71,841	88,125	83,954	16.9	-4.7
Dry Whey, Animal	4,481	5,737	5,130	14.5	-10.6
Dry Whey, Total	76,322	93,862	89,084	16.7	-5.1
Reduced Lactose and Minerals					
Human Food	7,904	6,858	4,269	-46.0	-37.8
Animal Feed	2,889	3,374	3,214	11.2	-4.7
Lactose, Human and Animal	41,344	48,603	46,540	12.6	-4.2
Whey					
Solids in Wet Blends, Animal	3,334	3,383	3,051	-8.5	-9.8
Protein Concentrate, Human	21,496	25,903	25,727	19.7	-0.7
Protein Concentrate, Animal	3,584	3,468	3,046	-15.0	-12.2
Manufacturers' Stocks End-of-Month ³					
	<i>1,000 Pounds</i>	<i>1,000 Pounds</i>	<i>1,000 Pounds</i>	<i>Percent</i>	<i>Percent</i>
Dry Whey Products					
Dry Whey, Human	26,799	28,931	30,226	12.8	4.5
Dry Whey, Animal	4,319	2,703	2,116	-51.0	-21.7
Reduced Lactose and Minerals					
Human and Animal ⁴	7,860	11,405	10,437	32.8	-8.5
Lactose, Human and Animal	21,784	39,184	39,282	80.3	0.3
Whey Protein Concentrate, Human	14,703	24,614	22,550	53.4	-8.4
Whey Protein Concentrate, Animal	1,799	1,281	1,249	-30.6	-2.5
Manufacturers' Selling Price ⁵					
	<i>Cents per Pound</i>	<i>Cents per Pound</i>	<i>Cents per Pound</i>	<i>Cents Change</i>	<i>Cents Change</i>
Dry Whey, Animal	25.8	13.8	16.8	-9.0	3.0

¹ Revised.

² Final marketable product only. Does not include quantity used or shipped to another plant for further processing into dry whey or modified whey products.

³ Stocks held by manufacturers at all points and in transit.

⁴ Reduced lactose and minerals stocks combined to avoid disclosure of individual operations.

⁵ Prices for bulk goods, f.o.b. plant. Average monthly prices reported by firms.

**Dairy Products: Production by Product and Month,
United States, 2001-2002 ¹**

Product and Month	By Month			Cumulative		
	2001	2002	Change From 2001	2001	2002	Change From 2001
	<i>1,000 Pounds</i>	<i>1,000 Pounds</i>	<i>Percent</i>	<i>1,000 Pounds</i>	<i>1,000 Pounds</i>	<i>Percent</i>
Total Cheese						
Jan	680,299	697,560	2.5	680,299	697,560	2.5
Feb	625,310	647,091	3.5	1,305,609	1,344,651	3.0
Mar	713,722	719,546	0.8	2,019,331	2,064,197	2.2
Apr	670,221	699,300	4.3	2,689,552	2,763,497	2.7
May	706,790	724,129	2.5	3,396,342	3,487,626	2.7
Jun	678,517	688,985	1.5	4,074,859	4,176,611	2.5
Jul	676,018	671,275	-0.7	4,750,877	4,847,886	2.0
Aug	660,033	687,419	4.1	5,410,910	5,535,305	2.3
Sep	641,785	657,985	2.5	6,052,695	6,193,290	2.3
Oct	682,080			6,734,775		
Nov	691,229			7,426,004		
Dec	703,090			8,129,094		
American Cheese						
Jan	300,419	315,166	4.9	300,419	315,166	4.9
Feb	270,134	287,383	6.4	570,553	602,549	5.6
Mar	297,097	318,242	7.1	867,650	920,791	6.1
Apr	291,905	316,800	8.5	1,159,555	1,237,591	6.7
May	308,548	326,180	5.7	1,468,103	1,563,771	6.5
Jun	304,618	310,332	1.9	1,772,721	1,874,103	5.7
Jul	293,372	301,248	2.7	2,066,093	2,175,351	5.3
Aug	281,527	305,826	8.6	2,347,620	2,481,177	5.7
Sep	277,046	286,822	3.5	2,624,666	2,767,999	5.5
Oct	295,991			2,920,657		
Nov	286,276			3,206,933		
Dec	312,229			3,519,162		
Cheddar Cheese						
Jan	236,611	246,156	4.0	236,611	246,156	4.0
Feb	211,627	224,971	6.3	448,238	471,127	5.1
Mar	233,113	249,156	6.9	681,351	720,283	5.7
Apr	229,129	249,284	8.8	910,480	969,567	6.5
May	244,614	256,090	4.7	1,155,094	1,225,657	6.1
Jun	239,366	240,492	0.5	1,394,460	1,466,149	5.1
Jul	230,631	228,334	-1.0	1,625,091	1,694,483	4.3
Aug	216,481	227,667	5.2	1,841,572	1,922,150	4.4
Sep	216,267	214,067	-1.0	2,057,839	2,136,217	3.8
Oct	230,948			2,288,787		
Nov	217,992			2,506,779		
Dec	239,698			2,746,477		

See footnote(s) at end of table.

--continued

**Dairy Products: Production by Product and Month,
United States, 2001-2002 ¹ (continued)**

Product and Month	By Month			Cumulative		
	2001	2002	Change From 2001	2001	2002	Change From 2001
	<i>1,000 Pounds</i>	<i>1,000 Pounds</i>	<i>Percent</i>	<i>1,000 Pounds</i>	<i>1,000 Pounds</i>	<i>Percent</i>
Italian Cheese						
Jan	284,866	282,491	-0.8	284,866	282,491	-0.8
Feb	268,060	265,977	-0.8	552,926	548,468	-0.8
Mar	302,583	293,345	-3.1	855,509	841,813	-1.6
Apr	272,459	277,912	2.0	1,127,968	1,119,725	-0.7
May	286,039	290,499	1.6	1,414,007	1,410,224	-0.3
Jun	269,665	269,376	-0.1	1,683,672	1,679,600	-0.2
Jul	275,857	264,012	-4.3	1,959,529	1,943,612	-0.8
Aug	266,736	268,638	0.7	2,226,265	2,212,250	-0.6
Sep	262,616	259,185	-1.3	2,488,881	2,471,435	-0.7
Oct	265,763			2,754,644		
Nov	283,112			3,037,756		
Dec	290,516			3,328,272		
Mozzarella Cheese						
Jan	226,475	224,114	-1.0	226,475	224,114	-1.0
Feb	214,507	213,429	-0.5	440,982	437,543	-0.8
Mar	238,805	234,689	-1.7	679,787	672,232	-1.1
Apr	215,432	220,483	2.3	895,219	892,715	-0.3
May	230,249	233,630	1.5	1,125,468	1,126,345	0.1
Jun	222,013	217,931	-1.8	1,347,481	1,344,276	-0.2
Jul	224,953	209,563	-6.8	1,572,434	1,553,839	-1.2
Aug	211,184	212,876	0.8	1,783,618	1,766,715	-0.9
Sep	212,654	207,573	-2.4	1,996,272	1,974,288	-1.1
Oct	214,476			2,210,748		
Nov	224,558			2,435,306		
Dec	230,443			2,665,749		
Other Italian						
Jan	58,391	58,377		58,391	58,377	
Feb	53,553	52,548	-1.9	111,944	110,925	-0.9
Mar	63,778	58,656	-8.0	175,722	169,581	-3.5
Apr	57,027	57,429	0.7	232,749	227,010	-2.5
May	55,790	56,869	1.9	288,539	283,879	-1.6
Jun	47,652	51,445	8.0	336,191	335,324	-0.3
Jul	50,904	54,449	7.0	387,095	389,773	0.7
Aug	55,552	55,762	0.4	442,647	445,535	0.7
Sep	49,962	51,612	3.3	492,609	497,147	0.9
Oct	51,287			543,896		
Nov	58,554			602,450		
Dec	60,073			662,523		

See footnote(s) at end of table.

--continued

**Dairy Products: Production by Product and Month,
United States, 2001-2002 ¹ (continued)**

Product and Month	By Month			Cumulative		
	2001	2002	Change From 2001	2001	2002	Change From 2001
	<i>1,000 Pounds</i>	<i>1,000 Pounds</i>	<i>Percent</i>	<i>1,000 Pounds</i>	<i>1,000 Pounds</i>	<i>Percent</i>
Butter						
Jan	127,356	140,687	10.5	127,356	140,687	10.5
Feb	111,809	125,352	12.1	239,165	266,039	11.2
Mar	111,374	128,966	15.8	350,539	395,005	12.7
Apr	108,975	132,406	21.5	459,514	527,411	14.8
May	111,001	126,533	14.0	570,515	653,944	14.6
Jun	86,783	96,905	11.7	657,298	750,849	14.2
Jul	84,210	93,975	11.6	741,508	844,824	13.9
Aug	75,557	88,512	17.1	817,065	933,336	14.2
Sep	86,721	92,166	6.3	903,786	1,025,502	13.5
Oct	109,911			1,013,697		
Nov	100,079			1,113,776		
Dec	123,025			1,236,801		
Nonfat Dry Milk, Human						
Jan	118,299	118,892	0.5	118,299	118,892	0.5
Feb	119,068	125,838	5.7	237,367	244,730	3.1
Mar	121,080	147,761	22.0	358,447	392,491	9.5
Apr	131,695	158,291	20.2	490,142	550,782	12.4
May	140,423	158,062	12.6	630,565	708,844	12.4
Jun	131,455	147,643	12.3	762,020	856,487	12.4
Jul	117,452	123,733	5.3	879,472	980,220	11.5
Aug	96,127	114,408	19.0	975,599	1,094,628	12.2
Sep	94,396	93,824	-0.6	1,069,995	1,188,452	11.1
Oct	105,788			1,175,783		
Nov	107,211			1,282,994		
Dec	130,805			1,413,799		
Total Dry Whey ²						
Jan	88,994	90,205	1.4	88,994	90,205	1.4
Feb	84,053	85,878	2.2	173,047	176,083	1.8
Mar	93,241	96,495	3.5	266,288	272,578	2.4
Apr	89,600	93,981	4.9	355,888	366,559	3.0
May	94,120	98,373	4.5	450,008	464,932	3.3
Jun	91,432	93,814	2.6	541,440	558,746	3.2
Jul	92,044	93,607	1.7	633,484	652,353	3.0
Aug	83,119	93,862	12.9	716,603	746,215	4.1
Sep	76,322	89,084	16.7	792,925	835,299	5.3
Oct	79,617			872,542		
Nov	82,295			954,837		
Dec	90,955			1,045,792		

See footnote(s) at end of table.

--continued

**Dairy Products: Production by Product and Month,
United States, 2001-2002 ¹ (continued)**

Product and Month	By Month			Cumulative		
	2001	2002	Change From 2001	2001	2002	Change From 2001
	<i>1,000 Pounds</i>	<i>1,000 Pounds</i>	<i>Percent</i>	<i>1,000 Pounds</i>	<i>1,000 Pounds</i>	<i>Percent</i>
Cream Cottage Cheese						
Jan	31,088	29,765	-4.3	31,088	29,765	-4.3
Feb	28,137	28,788	2.3	59,225	58,553	-1.1
Mar	32,915	31,520	-4.2	92,140	90,073	-2.2
Apr	29,684	30,502	2.8	121,824	120,575	-1.0
May	33,883	32,554	-3.9	155,707	153,129	-1.7
Jun	31,283	30,388	-2.9	186,990	183,517	-1.9
Jul	32,521	32,100	-1.3	219,511	215,617	-1.8
Aug	33,575	33,145	-1.3	253,086	248,762	-1.7
Sep	29,825	31,702	6.3	282,911	280,464	-0.9
Oct	31,324			314,235		
Nov	29,778			344,013		
Dec	27,512			371,525		
Lowfat Cottage Cheese						
Jan	30,262	29,609	-2.2	30,262	29,609	-2.2
Feb	28,858	30,006	4.0	59,120	59,615	0.8
Mar	32,994	32,509	-1.5	92,114	92,124	
Apr	29,825	30,524	2.3	121,939	122,648	0.6
May	35,011	34,477	-1.5	156,950	157,125	0.1
Jun	30,705	29,559	-3.7	187,655	186,684	-0.5
Jul	31,387	34,416	9.7	219,042	221,100	0.9
Aug	35,659	34,922	-2.1	254,701	256,022	0.5
Sep	29,764	31,972	7.4	284,465	287,994	1.2
Oct	31,192			315,657		
Nov	28,402			344,059		
Dec	26,825			370,884		
	<i>1,000 Gallons</i>	<i>1,000 Gallons</i>	<i>Percent</i>	<i>1,000 Gallons</i>	<i>1,000 Gallons</i>	<i>Percent</i>
Ice Cream, Hard						
Jan	67,446	70,004	3.8	67,446	70,004	3.8
Feb	67,583	71,034	5.1	135,029	141,038	4.5
Mar	77,071	76,680	-0.5	212,100	217,718	2.6
Apr	78,501	80,214	2.2	290,601	297,932	2.5
May	80,467	76,953	-4.4	371,068	374,885	1.0
Jun	84,752	81,127	-4.3	455,820	456,012	
Jul	82,043	82,404	0.4	537,863	538,416	0.1
Aug	79,827	78,039	-2.2	617,690	616,455	-0.2
Sep	70,197	70,323	0.2	687,887	686,778	-0.2
Oct	67,595			755,482		
Nov	59,123			814,605		
Dec	54,548			869,153		

See footnote(s) at end of table.

--continued

**Dairy Products: Production by Product and Month,
United States, 2001-2002 ¹ (continued)**

Product and Month	By Month			Cumulative		
	2001	2002	Change From 2001	2001	2002	Change From 2001
	<i>1,000 Gallons</i>	<i>1,000 Gallons</i>	<i>Percent</i>	<i>1,000 Gallons</i>	<i>1,000 Gallons</i>	<i>Percent</i>
Ice Cream, Lowfat						
Jan	26,825	22,119	-17.5	26,825	22,119	-17.5
Feb	27,510	24,976	-9.2	54,335	47,095	-13.3
Mar	35,206	31,620	-10.2	89,541	78,715	-12.1
Apr	36,974	36,060	-2.5	126,515	114,775	-9.3
May	41,675	38,960	-6.5	168,190	153,735	-8.6
Jun	43,893	39,773	-9.4	212,083	193,508	-8.8
Jul	41,495	39,421	-5.0	253,578	232,929	-8.1
Aug	39,978	36,811	-7.9	293,556	269,740	-8.1
Sep	31,511	31,487	-0.1	325,067	301,227	-7.3
Oct	30,776			355,843		
Nov	25,239			381,082		
Dec	25,664			406,746		
Ice Cream, NF, Hard						
Jan	1,369	2,074	51.5	1,369	2,074	51.5
Feb	1,451	1,610	11.0	2,820	3,684	30.6
Mar	1,712	2,034	18.8	4,532	5,718	26.2
Apr	1,558	1,561	0.2	6,090	7,279	19.5
May	1,789	1,543	-13.8	7,879	8,822	12.0
Jun	2,082	1,415	-32.0	9,961	10,237	2.8
Jul	1,655	1,500	-9.4	11,616	11,737	1.0
Aug	1,835	1,462	-20.3	13,451	13,199	-1.9
Sep	1,694	1,376	-18.8	15,145	14,575	-3.8
Oct	1,490			16,635		
Nov	1,333			17,968		
Dec	1,204			19,172		
Sherbet, Hard						
Jan	3,552	3,796	6.9	3,552	3,796	6.9
Feb	3,858	4,050	5.0	7,410	7,846	5.9
Mar	4,494	4,786	6.5	11,904	12,632	6.1
Apr	4,227	5,127	21.3	16,131	17,759	10.1
May	5,150	5,417	5.2	21,281	23,176	8.9
Jun	5,310	5,475	3.1	26,591	28,651	7.7
Jul	5,037	5,531	9.8	31,628	34,182	8.1
Aug	4,654	5,094	9.5	36,282	39,276	8.3
Sep	3,731	4,085	9.5	40,013	43,361	8.4
Oct	3,575			43,588		
Nov	3,010			46,598		
Dec	2,870			49,468		

See footnote(s) at end of table.

--continued

**Dairy Products: Production by Product and Month,
United States, 2001-2002¹ (continued)**

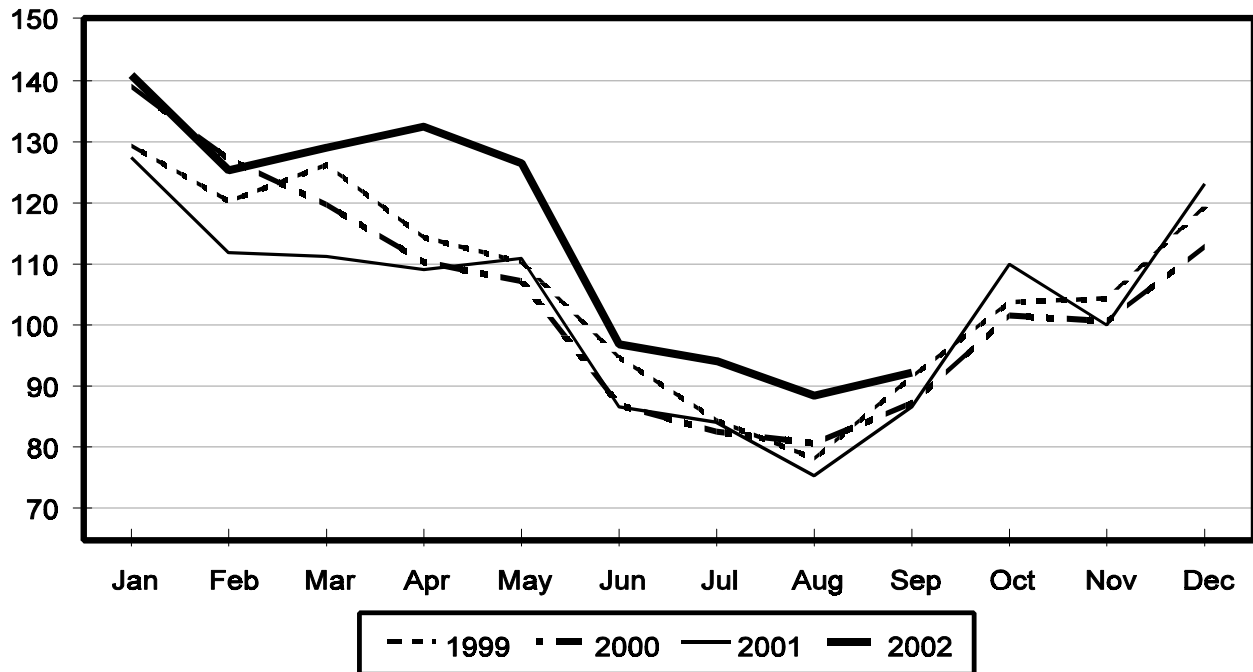
Product and Month	By Month			Cumulative		
	2001	2002	Change From 2001	2001	2002	Change From 2001
	<i>1,000 Gallons</i>	<i>1,000 Gallons</i>	<i>Percent</i>	<i>1,000 Gallons</i>	<i>1,000 Gallons</i>	<i>Percent</i>
Frozen Yogurt						
Jan	6,516	5,976	-8.3	6,516	5,976	-8.3
Feb	5,939	6,348	6.9	12,455	12,324	-1.1
Mar	7,388	6,900	-6.6	19,843	19,224	-3.1
Apr	6,970	6,878	-1.3	26,813	26,102	-2.7
May	7,886	7,443	-5.6	34,699	33,545	-3.3
Jun	7,755	6,985	-9.9	42,454	40,530	-4.5
Jul	7,370	7,536	2.3	49,824	48,066	-3.5
Aug	8,067	7,031	-12.8	57,891	55,097	-4.8
Sep	5,895	6,620	12.3	63,786	61,717	-3.2
Oct	5,887			69,673		
Nov	5,329			75,002		
Dec	4,597			79,599		

¹ August 2002 data revised.

² Excludes all modified dry whey products.

Total Butter Production United States

Million Pounds



**Total Cheese, Excluding Cottage Cheese: Production by
State and United States, September 2001-2002**

State	Sep 2001	Aug ¹ 2002	Sep 2002	Change From	
				Sep 2001	Aug 2002
	<i>1,000 Pounds</i>	<i>1,000 Pounds</i>	<i>1,000 Pounds</i>	<i>Percent</i>	<i>Percent</i>
CA	134,150	143,549	140,608	4.8	-2.0
ID	46,256	58,524	52,477	13.4	-10.3
IL	8,678	7,680	8,006	-7.7	4.2
IA	16,824	22,235	17,926	6.6	-19.4
MA	60	65	36	-40.0	-44.6
MN	40,612	45,518	36,547	-10.0	-19.7
MO	8,223	8,576	8,912	8.4	3.9
NY	54,356	57,312	58,154	7.0	1.5
OH	11,057	12,075	12,962	17.2	7.3
PA	28,724	28,496	27,742	-3.4	-2.6
SD	13,598	13,784	12,518	-7.9	-9.2
UT	4,734	6,218	4,903	3.6	-21.1
WA	11,675	12,595	12,696	8.7	0.8
WI	174,122	181,592	178,572	2.6	-1.7
Oth Sts ²	88,716	89,200	85,926	-3.1	-3.7
US	641,785	687,419	657,985	2.5	-4.3
N Atlantic	95,366	101,130	99,926	4.8	-1.2
S Atlantic	3,597	3,046	3,304	-8.1	8.5
E N Central	205,577	213,312	211,600	2.9	-0.8
W N Central	87,799	96,986	82,379	-6.2	-15.1
S Central	4,904	6,265	7,054	43.8	12.6
West	244,542	266,680	253,722	3.8	-4.9

¹ Revised.

² States not shown when fewer than 3 plants reported or individual plant operations could be disclosed. Percent change shown only when comparable States are included in the calculation.

American Cheese: Production by State and United States, September 2001-2002

State	Sep 2001	Aug ¹ 2002	Sep 2002	Change From	
				Sep 2001	Aug 2002
	<i>1,000 Pounds</i>	<i>1,000 Pounds</i>	<i>1,000 Pounds</i>	<i>Percent</i>	<i>Percent</i>
CA	60,979	65,072	69,454	13.9	6.7
ID	38,164	45,518	40,392	5.8	-11.3
IA	9,412	11,423	10,658	13.2	-6.7
MN	38,202	43,846	35,403	-7.3	-19.3
NY	7,705	7,032	5,394	-30.0	-23.3
OH	1,890	2,288	2,506	32.6	9.5
OR	6,352	8,190	8,187	28.9	0.0
SD	8,469	6,665	6,054	-28.5	-9.2
WA	11,479	12,573	12,671	10.4	0.8
WI	63,995	70,700	64,700	1.1	-8.5
Oth Sts ²	30,399	32,519	31,403	3.3	-3.4
US	277,046	305,826	286,822	3.5	-6.2
Atlantic	13,135	11,856	9,519	-27.5	-19.7
E N Central	67,121	74,460	68,612	2.2	-7.9
W N Central	57,202	62,899	52,918	-7.5	-15.9
S Central	4,495	3,673	4,632	3.0	26.1
West	135,093	152,938	151,141	11.9	-1.2

¹ Revised.

² States not shown when fewer than 3 plants reported or individual plant operations could be disclosed. Percent change shown only when comparable States are included in the calculation.

Cheddar Cheese: Production by State and United States, September 2001-2002

State	Sep 2001	Aug ¹ 2002	Sep 2002	Change From	
				Sep 2001	Aug 2002
	<i>1,000 Pounds</i>	<i>1,000 Pounds</i>	<i>1,000 Pounds</i>	<i>Percent</i>	<i>Percent</i>
CA	46,948	45,730	50,666	7.9	10.8
ID	17,662	18,509	17,770	0.6	-4.0
MN	36,668	40,890	32,800	-10.5	-19.8
NY	7,637	6,972	5,303	-30.6	-23.9
SD	6,496	4,253	4,183	-35.6	-1.6
WA	9,308	10,204	10,237	10.0	0.3
WI	50,675	56,200	50,200	-0.9	-10.7
Oth Sts ²	40,873	44,909	42,908	5.0	-4.5
US	216,267	227,667	214,067	-1.0	-6.0
Atlantic	12,840	11,644	9,227	-28.1	-20.8
E N Cen	52,118	58,087	52,470	0.7	-9.7
W N Cen	49,222	51,735	42,964	-12.7	-17.0
S Cen	4,495	3,673	4,632	3.0	26.1
West	97,592	102,528	104,774	7.4	2.2

¹ Revised.

² States not shown when fewer than 3 plants reported or individual plant operations could be disclosed. Percent change shown only when comparable States are included in the calculation.

Mozzarella Cheese: Production by State and United States, September 2001-2002

State	Sep 2001	Aug ¹ 2002	Sep 2002	Change From	
				Sep 2001	Aug 2002
	<i>1,000 Pounds</i>	<i>1,000 Pounds</i>	<i>1,000 Pounds</i>	<i>Percent</i>	<i>Percent</i>
CA	56,510	61,286	59,205	4.8	-3.4
NY	19,004	16,984	15,403	-18.9	-9.3
WI	62,400	61,600	66,100	5.9	7.3
Oth Sts ²	74,740	73,006	66,865	-10.5	-8.4
US	212,654	212,876	207,573	-2.4	-2.5
Atlantic ³	39,382	39,318	36,574	-7.1	-7.0
E N Central	72,838	72,074	76,583	5.1	6.3
West	84,077	86,519	79,681	-5.2	-7.9

¹ Revised.

² States not shown when fewer than 3 plants reported or individual plant operations could be disclosed. Percent change shown only when comparable States are included in the calculation.

³ Region totals may not add to U.S. when compiled regions could not be disclosed.

Butter: Production by State and United States, September 2001-2002

State	Sep 2001	Aug ¹ 2002	Sep 2002	Change From	
				Sep 2001	Aug 2002
	<i>1,000 Pounds</i>	<i>1,000 Pounds</i>	<i>1,000 Pounds</i>	<i>Percent</i>	<i>Percent</i>
CA	23,154	30,046	28,549	23.3	-5.0
NY	2,087	1,712	2,108	1.0	23.1
PA	4,562	4,259	4,811	5.5	13.0
WA	8,062	8,890	7,992	-0.9	-10.1
WI	22,994	21,193	22,900	-0.4	8.1
Oth Sts ²	25,862	22,412	25,806	-0.2	15.1
US	86,721	88,512	92,166	6.3	4.1
N Atlantic ³	9,038	7,863	9,379	3.8	19.3
E N Central	26,043	23,824	26,205	0.6	10.0
W N Central	7,491	6,845	6,114	-18.4	-10.7
West	35,870	43,959	41,502	15.7	-5.6

¹ Revised.

² States not shown when fewer than 3 plants reported or individual plant operations could be disclosed. Percent change shown only when comparable States are included in the calculation.

³ Region totals may not add to U.S. when compiled regions could not be disclosed.

**Nonfat Dry Milk, Human: Production by State
and United States, September 2001-2002**

State	Sep 2001	Aug ¹ 2002	Sep 2002	Change From	
				Sep 2001	Aug 2002
	<i>1,000 Pounds</i>	<i>1,000 Pounds</i>	<i>1,000 Pounds</i>	<i>Percent</i>	<i>Percent</i>
CA	52,962	56,959	51,571	-2.6	-9.5
ID	7,149	8,681	6,318	-11.6	-27.2
WA	15,333	16,643	14,568	-5.0	-12.5
Oth Sts ²	18,952	32,125	21,367	12.7	-33.5
US	94,396	114,408	93,824	-0.6	-18.0
Atlantic	6,455	7,244	3,884	-39.8	-46.4
E N Central	1,476	3,379	1,686	14.2	-50.1
W N Central	3,977	5,806	4,143	4.2	-28.6
S Central	1,264	2,897	1,879	48.7	-35.1
West	81,224	95,082	82,232	1.2	-13.5

¹ Revised.

² States not shown when fewer than 3 plants reported or individual plant operations could be disclosed. Percent change shown only when comparable States are included in the calculation.

**Dry Whey, Human: Production by State
and United States, September 2001-2002**

State	Sep 2001	Aug ¹ 2002	Sep 2002	Change From	
				Sep 2001	Aug 2002
	<i>1,000 Pounds</i>	<i>1,000 Pounds</i>	<i>1,000 Pounds</i>	<i>Percent</i>	<i>Percent</i>
CA	10,572	12,467	13,285	25.7	6.6
MN	5,299	6,730	6,067	14.5	-9.9
NY	9,465	10,184	9,257	-2.2	-9.1
PA	6,450	8,969	8,360	29.6	-6.8
WA	5,019	8,854	8,460	68.6	-4.4
WI	21,195	25,633	24,100	13.7	-6.0
Oth Sts ²	13,841	15,288	14,425	4.2	-5.6
US	71,841	88,125	83,954	16.9	-4.7
Atlantic	15,915	19,153	17,617	10.7	-8.0
Central	36,793	43,222	40,323	9.6	-6.7
West	19,133	25,750	26,014	36.0	1.0

¹ Revised.

² States not shown when fewer than 3 plants reported or individual plant operations could be disclosed. Percent change shown only when comparable States are included in the calculation.

Ice Cream, Hard: Production by State and United States, September 2001-2002

State	Sep 2001	Aug ¹ 2002	Sep 2002	Change From	
				Sep 2001	Aug 2002
	<i>1,000 Gallons</i>	<i>1,000 Gallons</i>	<i>1,000 Gallons</i>	<i>Percent</i>	<i>Percent</i>
CA	10,610	11,270	10,501	-1.0	-6.8
FL	1,839	1,700	1,800	-2.1	5.9
IL	3,033	3,033	3,011	-0.7	-0.7
IN	7,055	6,359	6,764	-4.1	6.4
MD	1,690	1,893	1,690		-10.7
MA	5,055	6,535	5,263	4.1	-19.5
MI	1,945	1,938	1,814	-6.7	-6.4
MN	3,482	3,912	4,343	24.7	11.0
NH	16	25	16		-36.0
NY	1,996	3,000	2,500	25.3	-16.7
NC	1,651	1,596	1,214	-26.5	-23.9
OH	2,660	2,917	2,833	6.5	-2.9
OR	807	1,220	800	-0.9	-34.4
PA	3,385	4,556	4,106	21.3	-9.9
SD	2	3	2		-33.3
TN	1,551	1,096	1,169	-24.6	6.7
TX	3,854	4,599	4,303	11.7	-6.4
UT	1,182	1,116	1,037	-12.3	-7.1
WA	929	1,409	866	-6.8	-38.5
Oth Sts ²	17,455	19,862	16,291	-6.7	-18.0
US	70,197	78,039	70,323	0.2	-9.9
N Atlantic	12,838	16,813	14,284	11.3	-15.0
S Atlantic	6,714	6,851	5,986	-10.8	-12.6
E N Central	15,387	15,299	15,261	-0.8	-0.2
W N Central	10,904	11,641	10,852	-0.5	-6.8
S Central	8,278	9,222	8,481	2.5	-8.0
West	16,076	18,213	15,459	-3.8	-15.1

¹ Revised.

² States not shown when fewer than 3 plants reported or individual plant operations could be disclosed. Percent change shown only when comparable States are included in the calculation.

**Canned Milk and Dry Milk Products: Manufacturers' Shipments,
Stocks, and Selling Prices, September, 2001-2002**

Product	Sep 2001	Aug 2002 ¹	Sep 2002	Change From	
				Sep 2001	Aug 2002
Manufacturers' Shipments ²					
	<i>1,000 Pounds</i>	<i>1,000 Pounds</i>	<i>1,000 Pounds</i>	<i>Percent</i>	<i>Percent</i>
Nonfat Dry Milk, Human	118,457	183,223	148,065	25.0	-19.2
Manufacturers' Stocks End-of-Month ³					
	<i>1,000 Pounds</i>	<i>1,000 Pounds</i>	<i>1,000 Pounds</i>	<i>Percent</i>	<i>Percent</i>
Canned Evaporated and Condensed Whole Milk	82,473	89,882	81,084	-1.7	-9.8
Nonfat Dry Milk, Human	101,889	109,456	86,796	-14.8	-20.7
Dry Buttermilk, Total	4,056	9,829	7,425	83.1	-24.5

¹ Revised.

² For dry products, shipments of bulk goods only.

³ Stocks held by manufacturers at all points and in transit.

Procedures and Reliability: Estimates included in this report are based on data provided each month by manufacturers of these products. In 32 States, the State Departments of Agriculture assist in collection of data, which eliminates duplicate reporting and reduces respondent burden. Data are collected by mail, personal and telephone interviews following the close of each month. There were 1,165 manufacturers that made one or more products in 2001. Each month, reports are generally received from all dairy plants in States with small numbers of plants. In States with large numbers of plants, survey procedures are designed to obtain monthly reports from all large plants and from a sample of small plants. Monthly estimates are based upon returns from about 70 percent of the plants which account for 70 to 90 percent of the total production of major dairy products.

Revision Policy: Monthly estimates are subject to revision the month following the preliminary estimates. Annual estimates are published in the "**Dairy Products**" report published each April which includes any revisions made to current and previous year. In preparing the annual report, an attempt is made to get information from all plants.

The next "Dairy Products" report will be released at 3 p.m. ET on December 4, 2002.

The United States Department of Agriculture (USDA) prohibits discrimination in all its programs on the basis of race, color, national origin, gender, religion, age, disability, political beliefs, sexual orientation, and marital or family status. (Not all prohibited bases apply to all programs.) Persons with disabilities who require alternative means for communication of program information (braille, large print, audiotape, etc.) should contact the USDA's TARGET Center at 202-720-2600 (voice and TDD).

To file a complaint of discrimination, write USDA, Director, Office of Civil Rights, Room 326-W, Whitten Building, 1400 Independence Avenue, SW, Washington, D.C., 20250-9410, or call 202-720-5964 (voice or TDD). USDA is an equal opportunity provider and employer.

ACCESS TO REPORTS!!

For your convenience, there are several ways to obtain NASS reports, data products, and services:

INTERNET ACCESS

All NASS reports are available free of charge on the worldwide Internet. For access, connect to the Internet and go to the NASS Home Page at: <http://www.usda.gov/nass/>. Select "Today's Reports" or Publications and then Reports Calendar or Publications and then Search, by Title or Subject.

E-MAIL SUBSCRIPTION

All NASS reports are available by subscription free of charge direct to your e-mail address. Starting with the NASS Home Page at <http://www.usda.gov/nass/>, click on **Publications**, then click on the **Subscribe by E-mail** button which takes you to the page describing e-mail delivery of reports. Finally, click on **Go to the Subscription Page** and follow the instructions.

AUTOFAX ACCESS

NASSFax service is available for some reports from your fax machine. Please call 202-720-2000, using the handset attached to your fax. Respond to the voice prompts. Document 0411 is a list of available reports.

PRINTED REPORTS OR DATA PRODUCTS

CALL OUR TOLL-FREE ORDER DESK: 800-999-6779 (U.S. and Canada)
Other areas, please call 703-605-6220 FAX: 703-605-6900
(Visa, MasterCard, check, or money order acceptable for payment.)

ASSISTANCE

For **assistance** with general agricultural statistics or further information about NASS or its products or services, contact the **Agricultural Statistics Hotline** at **800-727-9540**, 7:30 a.m. to 4:00 p.m. ET, or e-mail: nass@nass.usda.gov.
