

Released December 4, 2002, by the National Agricultural Statistics Service (NASS), Agricultural Statistics Board, U.S. Department of Agriculture. For information on "Dairy Products" call Kevin Pautler at (202) 720-9168, office hours 6:45 a.m. to 3:30 p.m. ET.

October 2002 Highlights

Total cheese output (excluding cottage cheese) was 714 million pounds, 4.7 percent above October 2001 and 6.3 percent above September 2002.

American type cheese production totaled 293 million pounds, 1.0 percent below October 2001 but 2.6 percent above September 2002.

Butter production was 102 million pounds in October, 7.1 percent below October 2001 but 10.7 percent above September 2002.

Frozen dessert: (comparisons with October 2001)

Ice cream, Regular (hard) --- 70.2 million gallons, up 3.8 percent.

Ice cream, Lowfat (total) --- 28.9 million gallons, down 6.2 percent.

Ice cream, Nonfat (hard) --- 1.57 million gallons, up 5.6 percent.

Sherbet (hard) --- 4.28 million gallons, up 19.7 percent.

Frozen Yogurt (total) --- 6.40 million gallons, up 8.6 percent.

Nonfat dry milk for human food: (compared with October 2001) --- 99.7 million pounds, down 5.7 percent.

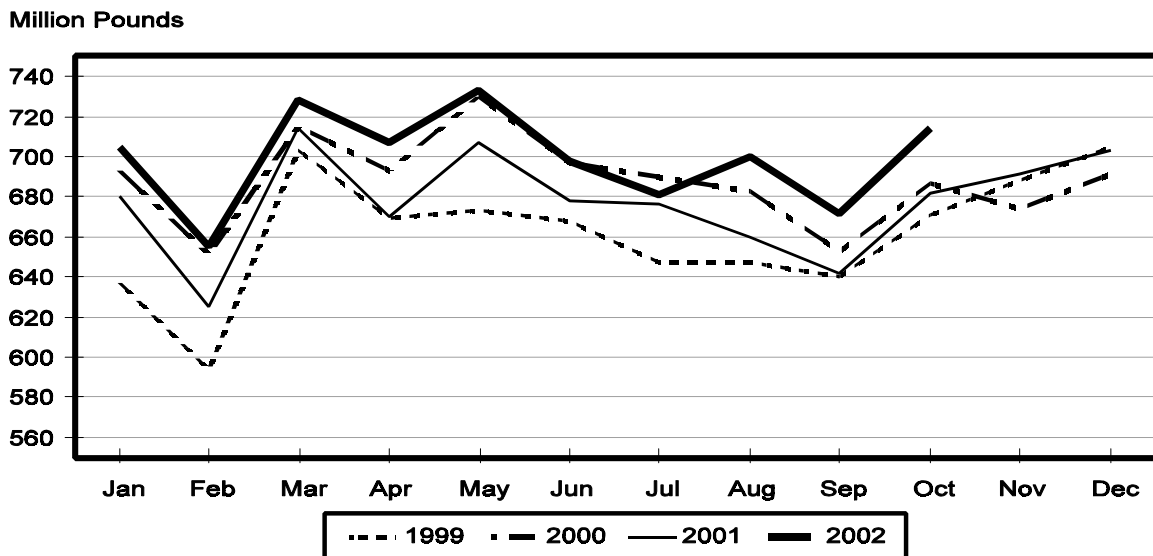
Dry whey products: (comparisons with October 2001)

Dry whey, human --- 88.2 million pounds, up 17.0 percent.

Dry whey, animal --- 4.60 million pounds, up 7.6 percent.

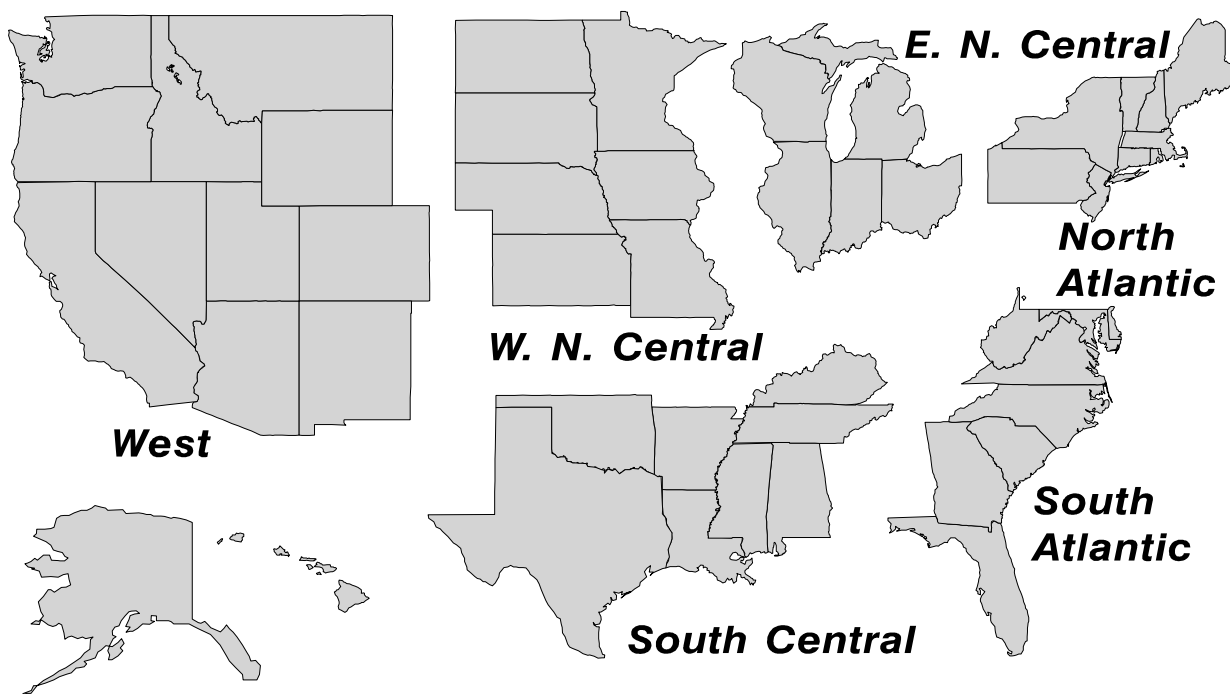
Dry whey, total --- 92.8 million pounds, up 16.5 percent.

Total Cheese Production United States



U. S. Geographic Regions Dairy Products

State totals are not published when fewer than 3 firms have reported or one firm comprises more than 60 percent of the State total. If we are not able to publish a region for confidentiality reasons, it will be combined with other regions when possible. For example, if North Atlantic can not be published, then it will be combined with South Atlantic to publish Atlantic. The West North Central and East North Central will be combined, if necessary, to form North Central. In the event that neither could be published, they may be combined with South Central to publish Central. Some tables will have only limited regions shown, therefore the regions may not add to the United States total.



**Dairy Products: Production by Product,
United States, October, 2001-2002**

Product	Oct 2001	Sep 2002 ¹	Oct 2002	Change From	
				Oct 2001	Sep 2002
	<i>1,000 Pounds</i>	<i>1,000 Pounds</i>	<i>1,000 Pounds</i>	<i>Percent</i>	<i>Percent</i>
Butter	109,911	92,264	102,121	-7.1	10.7
Cheese					
American Types ²	295,991	285,724	293,141	-1.0	2.6
Cheddar	230,948	212,747	216,483	-6.3	1.8
Swiss	21,223	21,258	22,729	7.1	6.9
Brick and Muenster	7,739	7,555	8,814	13.9	16.7
Cream and Neufchatel	64,009	56,094	63,857	-0.2	13.8
Hispanic	9,418	10,031	10,791	14.6	7.6
Mozzarella	214,476	222,422	233,302	8.8	4.9
Other Italian Types	51,287	51,664	62,539	21.9	21.0
Total Italian Types	265,763	274,086	295,841	11.3	7.9
All Other Types	17,937	17,214	18,840	5.0	9.4
Total	682,080	671,962	714,013	4.7	6.3
Cottage Cheese, Curd ³	38,161	37,944	38,393	0.6	1.2
Cottage Cheese, Cream ⁴	31,324	31,651	31,623	1.0	-0.1
Cottage Cheese, Lowfat ⁵	31,192	31,669	32,386	3.8	2.3
Canned Evaporated and					
Condensed Whole Milk	43,262	43,514	49,461	14.3	13.7
Dry Whole Milk	4,033	4,823	5,488	36.1	13.8
Nonfat Dry Milk, Human	105,788	93,763	99,746	-5.7	6.4
Dry Skim Milk, Animal	410	485	443	8.0	-8.7
Dry Buttermilk	3,982	2,860	3,567	-10.4	24.7
Yogurt, Plain & Flavored	157,818	190,577	175,691	11.3	-7.8
	<i>1,000 Gallons</i>	<i>1,000 Gallons</i>	<i>1,000 Gallons</i>	<i>Percent</i>	<i>Percent</i>
Frozen Products					
Ice Cream, Hard	67,595	70,281	70,185	3.8	-0.1
Ice Cream, Lowfat, Hard	7,101	7,442	8,045	13.3	8.1
Ice Cream, Lowfat, Soft	23,675	23,911	20,834	-12.0	-12.9
Ice Cream, Lowfat, Total	30,776	31,353	28,879	-6.2	-7.9
Ice Cream, Nonfat, Hard	1,490	1,406	1,574	5.6	11.9
Sherbet, Hard	3,575	4,135	4,278	19.7	3.5
Water and Juice Ices	4,340	4,053	4,478	3.2	10.5
Frozen Yogurt, Total	5,887	6,715	6,395	8.6	-4.8
Regular & Lowfat, Hard	2,017	1,933	2,150	6.6	11.2
Nonfat, Hard	980	1,189	1,043	6.4	-12.3
Other Frozen Dairy					
Products	589	623	647	9.8	3.9
Mix for Frozen Products					
Ice Cream Mix	39,070	42,183	40,833	4.5	-3.2
Ice Cream, Lowfat, Mix	16,209	17,426	16,005	-1.3	-8.2
Ice Cream, Nonfat, Mix	942	929	905	-3.9	-2.6
Sherbet Mix	2,481	3,036	3,052	23.0	0.5
Yogurt Mix	3,328	3,950	3,762	13.0	-4.8

¹ Revised.

² Includes Cheddar, Colby, Monterey, and Jack.

³ Mostly used for processing into cream or lowfat cottage cheese.

⁴ Fat content 4 percent or more.

⁵ Fat content less than 4 percent.

**Whey and Modified Whey Products: Production, Stocks,
and Prices, United States, October, 2001-2002**

Product	Oct 2001	Sep 2002 ¹	Oct 2002	Change From	
				Oct 2001	Sep 2002
Production					
	<i>1,000 Pounds</i>	<i>1,000 Pounds</i>	<i>1,000 Pounds</i>	<i>Percent</i>	<i>Percent</i>
Condensed Whey, Solids Content ²					
Sweet-Type, Human	5,782	6,953	6,621	14.5	-4.8
Sweet-Type, Animal ³	941	741			
Dry Whey Products					
Dry Whey, Human	75,344	84,855	88,167	17.0	3.9
Dry Whey, Animal	4,273	5,115	4,597	7.6	-10.1
Dry Whey, Total	79,617	89,970	92,764	16.5	3.1
Reduced Lactose and Minerals					
Human Food	7,138	4,269	4,371	-38.8	2.4
Animal Feed	3,090	3,214	3,543	14.7	10.2
Lactose, Human and Animal	46,049	46,000	48,523	5.4	5.5
Whey					
Solids in Wet Blends, Animal	3,393	3,051	3,399	0.2	11.4
Protein Concentrate, Human	21,495	25,727	26,714	24.3	3.8
Protein Concentrate, Animal	3,900	3,046	3,408	-12.6	11.9
Manufacturers' Stocks End-of-Month ⁴					
	<i>1,000 Pounds</i>	<i>1,000 Pounds</i>	<i>1,000 Pounds</i>	<i>Percent</i>	<i>Percent</i>
Dry Whey Products					
Dry Whey, Human	24,711	30,993	30,672	24.1	-1.0
Dry Whey, Animal	3,476	2,136	2,031	-41.6	-4.9
Reduced Lactose and Minerals					
Human and Animal ⁵	6,710	10,437	8,849	31.9	-15.2
Lactose, Human and Animal	20,288	39,605	41,832	106.2	5.6
Whey Protein Concentrate, Human	12,803	22,184	21,542	68.3	-2.9
Whey Protein Concentrate, Animal	1,557	1,249	1,114	-28.5	-10.8
Manufacturers' Selling Price ⁶					
	<i>Cents per Pound</i>	<i>Cents per Pound</i>	<i>Cents per Pound</i>	<i>Cents Change</i>	<i>Cents Change</i>
Dry Whey, Animal	23.6	17.6	21.1	-2.5	3.5

¹ Revised.

² Final marketable product only. Does not include quantity used or shipped to another plant for further processing into dry whey or modified whey products.

³ Not shown when fewer than three plants reported or individual plant operations could be disclosed

⁴ Stocks held by manufacturers at all points and in transit.

⁵ Reduced lactose and minerals stocks combined to avoid disclosure of individual operations.

⁶ Prices for bulk goods, f.o.b. plant. Average monthly prices reported by firms.

**Dairy Products: Production by Product and Month,
United States, 2001-2002 ¹**

Product and Month	By Month			Cumulative		
	2001	2002	Change From 2001	2001	2002	Change From 2001
	<i>1,000 Pounds</i>	<i>1,000 Pounds</i>	<i>Percent</i>	<i>1,000 Pounds</i>	<i>1,000 Pounds</i>	<i>Percent</i>
Total Cheese ³						
Jan	680,299	705,245	3.7	680,299	705,245	3.7
Feb	625,310	654,950	4.7	1,305,609	1,360,195	4.2
Mar	713,722	727,574	1.9	2,019,331	2,087,769	3.4
Apr	670,221	706,962	5.5	2,689,552	2,794,731	3.9
May	706,790	733,204	3.7	3,396,342	3,527,935	3.9
Jun	678,517	697,507	2.8	4,074,859	4,225,442	3.7
Jul	676,018	680,801	0.7	4,750,877	4,906,243	3.3
Aug	660,033	700,163	6.1	5,410,910	5,606,406	3.6
Sep	641,785	671,962	4.7	6,052,695	6,278,368	3.7
Oct	682,080	714,013	4.7	6,734,775	6,992,381	3.8
Nov	691,229			7,426,004		
Dec	703,090			8,129,094		
American Cheese						
Jan	300,419	315,166	4.9	300,419	315,166	4.9
Feb	270,134	287,383	6.4	570,553	602,549	5.6
Mar	297,097	318,242	7.1	867,650	920,791	6.1
Apr	291,905	316,800	8.5	1,159,555	1,237,591	6.7
May	308,548	326,180	5.7	1,468,103	1,563,771	6.5
Jun	304,618	310,332	1.9	1,772,721	1,874,103	5.7
Jul	293,372	301,248	2.7	2,066,093	2,175,351	5.3
Aug	281,527	305,826	8.6	2,347,620	2,481,177	5.7
Sep	277,046	285,724	3.1	2,624,666	2,766,901	5.4
Oct	295,991	293,141	-1.0	2,920,657	3,060,042	4.8
Nov	286,276			3,206,933		
Dec	312,229			3,519,162		
Cheddar Cheese						
Jan	236,611	246,156	4.0	236,611	246,156	4.0
Feb	211,627	224,971	6.3	448,238	471,127	5.1
Mar	233,113	249,156	6.9	681,351	720,283	5.7
Apr	229,129	249,284	8.8	910,480	969,567	6.5
May	244,614	256,090	4.7	1,155,094	1,225,657	6.1
Jun	239,366	240,492	0.5	1,394,460	1,466,149	5.1
Jul	230,631	228,334	-1.0	1,625,091	1,694,483	4.3
Aug	216,481	227,667	5.2	1,841,572	1,922,150	4.4
Sep	216,267	212,747	-1.6	2,057,839	2,134,897	3.7
Oct	230,948	216,483	-6.3	2,288,787	2,351,380	2.7
Nov	217,992			2,506,779		
Dec	239,698			2,746,477		

See footnote(s) at end of table.

--continued

**Dairy Products: Production by Product and Month,
United States, 2001-2002 ¹ (continued)**

Product and Month	By Month			Cumulative		
	2001	2002	Change From 2001	2001	2002	Change From 2001
	<i>1,000 Pounds</i>	<i>1,000 Pounds</i>	<i>Percent</i>	<i>1,000 Pounds</i>	<i>1,000 Pounds</i>	<i>Percent</i>
Italian Cheese ³						
Jan	284,866	290,176	1.9	284,866	290,176	1.9
Feb	268,060	273,836	2.2	552,926	564,012	2.0
Mar	302,583	301,373	-0.4	855,509	865,385	1.2
Apr	272,459	285,574	4.8	1,127,968	1,150,959	2.0
May	286,039	299,574	4.7	1,414,007	1,450,533	2.6
Jun	269,665	277,898	3.1	1,683,672	1,728,431	2.7
Jul	275,857	273,538	-0.8	1,959,529	2,001,969	2.2
Aug	266,736	281,382	5.5	2,226,265	2,283,351	2.6
Sep	262,616	274,086	4.4	2,488,881	2,557,437	2.8
Oct	265,763	295,841	11.3	2,754,644	2,853,278	3.6
Nov	283,112			3,037,756		
Dec	290,516			3,328,272		
Mozzarella ³						
Jan	226,475	231,799	2.4	226,475	231,799	2.4
Feb	214,507	221,288	3.2	440,982	453,087	2.7
Mar	238,805	242,717	1.6	679,787	695,804	2.4
Apr	215,432	228,145	5.9	895,219	923,949	3.2
May	230,249	242,705	5.4	1,125,468	1,166,654	3.7
Jun	222,013	226,453	2.0	1,347,481	1,393,107	3.4
Jul	224,953	219,089	-2.6	1,572,434	1,612,196	2.5
Aug	211,184	225,620	6.8	1,783,618	1,837,816	3.0
Sep	212,654	222,422	4.6	1,996,272	2,060,238	3.2
Oct	214,476	233,302	8.8	2,210,748	2,293,540	3.7
Nov	224,558			2,435,306		
Dec	230,443			2,665,749		
Other Italian						
Jan	58,391	58,377		58,391	58,377	
Feb	53,553	52,548	-1.9	111,944	110,925	-0.9
Mar	63,778	58,656	-8.0	175,722	169,581	-3.5
Apr	57,027	57,429	0.7	232,749	227,010	-2.5
May	55,790	56,869	1.9	288,539	283,879	-1.6
Jun	47,652	51,445	8.0	336,191	335,324	-0.3
Jul	50,904	54,449	7.0	387,095	389,773	0.7
Aug	55,552	55,762	0.4	442,647	445,535	0.7
Sep	49,962	51,664	3.4	492,609	497,199	0.9
Oct	51,287	62,539	21.9	543,896	559,738	2.9
Nov	58,554			602,450		
Dec	60,073			662,523		

See footnote(s) at end of table.

--continued

**Dairy Products: Production by Product and Month,
United States, 2001-2002 ¹ (continued)**

Product and Month	By Month			Cumulative		
	2001	2002	Change From 2001	2001	2002	Change From 2001
	<i>1,000 Pounds</i>	<i>1,000 Pounds</i>	<i>Percent</i>	<i>1,000 Pounds</i>	<i>1,000 Pounds</i>	<i>Percent</i>
Butter						
Jan	127,356	140,687	10.5	127,356	140,687	10.5
Feb	111,809	125,352	12.1	239,165	266,039	11.2
Mar	111,374	128,966	15.8	350,539	395,005	12.7
Apr	108,975	132,406	21.5	459,514	527,411	14.8
May	111,001	126,533	14.0	570,515	653,944	14.6
Jun	86,783	96,905	11.7	657,298	750,849	14.2
Jul	84,210	93,975	11.6	741,508	844,824	13.9
Aug	75,557	88,512	17.1	817,065	933,336	14.2
Sep	86,721	92,264	6.4	903,786	1,025,600	13.5
Oct	109,911	102,121	-7.1	1,013,697	1,127,721	11.2
Nov	100,079			1,113,776		
Dec	123,025			1,236,801		
Nonfat Dry Milk, Human						
Jan	118,299	118,892	0.5	118,299	118,892	0.5
Feb	119,068	125,838	5.7	237,367	244,730	3.1
Mar	121,080	147,761	22.0	358,447	392,491	9.5
Apr	131,695	158,291	20.2	490,142	550,782	12.4
May	140,423	158,062	12.6	630,565	708,844	12.4
Jun	131,455	147,643	12.3	762,020	856,487	12.4
Jul	117,452	123,733	5.3	879,472	980,220	11.5
Aug	96,127	114,408	19.0	975,599	1,094,628	12.2
Sep	94,396	93,763	-0.7	1,069,995	1,188,391	11.1
Oct	105,788	99,746	-5.7	1,175,783	1,288,137	9.6
Nov	107,211			1,282,994		
Dec	130,805			1,413,799		
Total Dry Whey ²						
Jan	88,994	90,205	1.4	88,994	90,205	1.4
Feb	84,053	85,878	2.2	173,047	176,083	1.8
Mar	93,241	96,495	3.5	266,288	272,578	2.4
Apr	89,600	93,981	4.9	355,888	366,559	3.0
May	94,120	98,373	4.5	450,008	464,932	3.3
Jun	91,432	93,814	2.6	541,440	558,746	3.2
Jul	92,044	93,607	1.7	633,484	652,353	3.0
Aug	83,119	93,862	12.9	716,603	746,215	4.1
Sep	76,322	89,970	17.9	792,925	836,185	5.5
Oct	79,617	92,764	16.5	872,542	928,949	6.5
Nov	82,295			954,837		
Dec	90,955			1,045,792		

See footnote(s) at end of table.

--continued

**Dairy Products: Production by Product and Month,
United States, 2001-2002 ¹ (continued)**

Product and Month	By Month			Cumulative		
	2001	2002	Change From 2001	2001	2002	Change From 2001
	<i>1,000 Pounds</i>	<i>1,000 Pounds</i>	<i>Percent</i>	<i>1,000 Pounds</i>	<i>1,000 Pounds</i>	<i>Percent</i>
Cream Cottage Cheese						
Jan	31,088	29,765	-4.3	31,088	29,765	-4.3
Feb	28,137	28,788	2.3	59,225	58,553	-1.1
Mar	32,915	31,520	-4.2	92,140	90,073	-2.2
Apr	29,684	30,502	2.8	121,824	120,575	-1.0
May	33,883	32,554	-3.9	155,707	153,129	-1.7
Jun	31,283	30,388	-2.9	186,990	183,517	-1.9
Jul	32,521	32,100	-1.3	219,511	215,617	-1.8
Aug	33,575	33,145	-1.3	253,086	248,762	-1.7
Sep	29,825	31,651	6.1	282,911	280,413	-0.9
Oct	31,324	31,623	1.0	314,235	312,036	-0.7
Nov	29,778			344,013		
Dec	27,512			371,525		
Lowfat Cottage Cheese						
Jan	30,262	29,609	-2.2	30,262	29,609	-2.2
Feb	28,858	30,006	4.0	59,120	59,615	0.8
Mar	32,994	32,509	-1.5	92,114	92,124	
Apr	29,825	30,524	2.3	121,939	122,648	0.6
May	35,011	34,477	-1.5	156,950	157,125	0.1
Jun	30,705	29,559	-3.7	187,655	186,684	-0.5
Jul	31,387	34,416	9.7	219,042	221,100	0.9
Aug	35,659	34,922	-2.1	254,701	256,022	0.5
Sep	29,764	31,669	6.4	284,465	287,691	1.1
Oct	31,192	32,386	3.8	315,657	320,077	1.4
Nov	28,402			344,059		
Dec	26,825			370,884		
	<i>1,000 Gallons</i>	<i>1,000 Gallons</i>	<i>Percent</i>	<i>1,000 Gallons</i>	<i>1,000 Gallons</i>	<i>Percent</i>
Ice Cream, Hard						
Jan	67,446	70,004	3.8	67,446	70,004	3.8
Feb	67,583	71,034	5.1	135,029	141,038	4.5
Mar	77,071	76,680	-0.5	212,100	217,718	2.6
Apr	78,501	80,214	2.2	290,601	297,932	2.5
May	80,467	76,953	-4.4	371,068	374,885	1.0
Jun	84,752	81,127	-4.3	455,820	456,012	
Jul	82,043	82,404	0.4	537,863	538,416	0.1
Aug	79,827	78,039	-2.2	617,690	616,455	-0.2
Sep	70,197	70,281	0.1	687,887	686,736	-0.2
Oct	67,595	70,185	3.8	755,482	756,921	0.2
Nov	59,123			814,605		
Dec	54,548			869,153		

See footnote(s) at end of table.

--continued

**Dairy Products: Production by Product and Month,
United States, 2001-2002¹ (continued)**

Product and Month	By Month			Cumulative		
	2001	2002	Change From 2001	2001	2002	Change From 2001
	<i>1,000 Gallons</i>	<i>1,000 Gallons</i>	<i>Percent</i>	<i>1,000 Gallons</i>	<i>1,000 Gallons</i>	<i>Percent</i>
Ice Cream, Lowfat						
Jan	26,825	22,119	-17.5	26,825	22,119	-17.5
Feb	27,510	24,976	-9.2	54,335	47,095	-13.3
Mar	35,206	31,620	-10.2	89,541	78,715	-12.1
Apr	36,974	36,060	-2.5	126,515	114,775	-9.3
May	41,675	38,960	-6.5	168,190	153,735	-8.6
Jun	43,893	39,773	-9.4	212,083	193,508	-8.8
Jul	41,495	39,421	-5.0	253,578	232,929	-8.1
Aug	39,978	36,811	-7.9	293,556	269,740	-8.1
Sep	31,511	31,353	-0.5	325,067	301,093	-7.4
Oct	30,776	28,879	-6.2	355,843	329,972	-7.3
Nov	25,239			381,082		
Dec	25,664			406,746		
Ice Cream, NF, Hard						
Jan	1,369	2,074	51.5	1,369	2,074	51.5
Feb	1,451	1,610	11.0	2,820	3,684	30.6
Mar	1,712	2,034	18.8	4,532	5,718	26.2
Apr	1,558	1,561	0.2	6,090	7,279	19.5
May	1,789	1,543	-13.8	7,879	8,822	12.0
Jun	2,082	1,415	-32.0	9,961	10,237	2.8
Jul	1,655	1,500	-9.4	11,616	11,737	1.0
Aug	1,835	1,462	-20.3	13,451	13,199	-1.9
Sep	1,694	1,406	-17.0	15,145	14,605	-3.6
Oct	1,490	1,574	5.6	16,635	16,179	-2.7
Nov	1,333			17,968		
Dec	1,204			19,172		
Sherbet, Hard						
Jan	3,552	3,796	6.9	3,552	3,796	6.9
Feb	3,858	4,050	5.0	7,410	7,846	5.9
Mar	4,494	4,786	6.5	11,904	12,632	6.1
Apr	4,227	5,127	21.3	16,131	17,759	10.1
May	5,150	5,417	5.2	21,281	23,176	8.9
Jun	5,310	5,475	3.1	26,591	28,651	7.7
Jul	5,037	5,531	9.8	31,628	34,182	8.1
Aug	4,654	5,094	9.5	36,282	39,276	8.3
Sep	3,731	4,135	10.8	40,013	43,411	8.5
Oct	3,575	4,278	19.7	43,588	47,689	9.4
Nov	3,010			46,598		
Dec	2,870			49,468		

See footnote(s) at end of table.

--continued

**Dairy Products: Production by Product and Month,
United States, 2001-2002¹ (continued)**

Product and Month	By Month			Cumulative		
	2001	2002	Change From 2001	2001	2002	Change From 2001
	<i>1,000 Gallons</i>	<i>1,000 Gallons</i>	<i>Percent</i>	<i>1,000 Gallons</i>	<i>1,000 Gallons</i>	<i>Percent</i>
Frozen Yogurt						
Jan	6,516	5,976	-8.3	6,516	5,976	-8.3
Feb	5,939	6,348	6.9	12,455	12,324	-1.1
Mar	7,388	6,900	-6.6	19,843	19,224	-3.1
Apr	6,970	6,878	-1.3	26,813	26,102	-2.7
May	7,886	7,443	-5.6	34,699	33,545	-3.3
Jun	7,755	6,985	-9.9	42,454	40,530	-4.5
Jul	7,370	7,536	2.3	49,824	48,066	-3.5
Aug	8,067	7,031	-12.8	57,891	55,097	-4.8
Sep	5,895	6,715	13.9	63,786	61,812	-3.1
Oct	5,887	6,395	8.6	69,673	68,207	-2.1
Nov	5,329			75,002		
Dec	4,597			79,599		

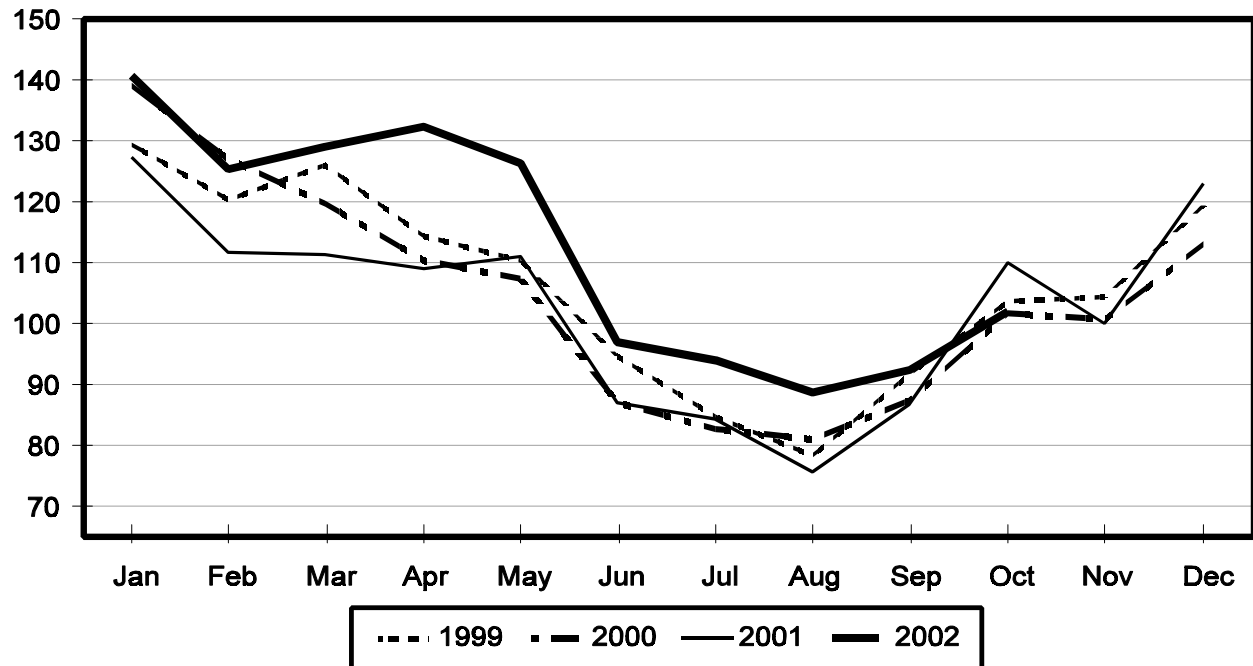
¹ September 2002 data revised.

² Excludes all modified dry whey products.

³ Preliminary revisions for Mozzarella cheese for January through September 2002. Revisions to Mozzarella cheese are reflected in Italian cheese and Total cheese numbers. Annual revisions will be published in April 2003.

Total Butter Production United States

Million Pounds



**Total Cheese, Excluding Cottage Cheese: Production by
State and United States, October 2001-2002**

State	Oct 2001	Sep ¹ 2002	Oct 2002	Change From	
				Oct 2001	Sep 2002
	<i>1,000 Pounds</i>	<i>1,000 Pounds</i>	<i>1,000 Pounds</i>	<i>Percent</i>	<i>Percent</i>
CA	139,924	140,609	142,733	2.0	1.5
ID	48,975	51,887	53,019	8.3	2.2
IL	9,418	8,006	9,181	-2.5	14.7
IA	23,017	17,670	23,842	3.6	34.9
MA	76	66	68	-10.5	3.0
MN	46,595	36,207	44,611	-4.3	23.2
MO	9,342	8,916	9,078	-2.8	1.8
NY	63,009	58,185	61,142	-3.0	5.1
OH	12,412	13,302	14,577	17.4	9.6
PA	29,194	27,742	30,750	5.3	10.8
SD	12,626	12,407	13,343	5.7	7.5
UT	4,581	4,903	4,159	-9.2	-15.2
WA	12,285	12,696	13,042	6.2	2.7
WI	177,903	178,804	185,739	4.4	3.9
Oth Sts ²	92,723	100,562	108,729	17.3	8.1
US	682,080	671,962	714,013	4.7	6.3
N Atlantic	107,230	100,094	107,205	0.0	7.1
S Atlantic	3,350	3,304	3,273	-2.3	-0.9
E N Central	211,156	212,172	223,593	5.9	5.4
W N Central	100,267	82,151	99,222	-1.0	20.8
S Central	4,119	7,054	6,498	57.8	-7.9
West	255,958	267,187	274,222	7.1	2.6

¹ Revised.

² States not shown when fewer than 3 plants reported or individual plant operations could be disclosed. Percent change shown only when comparable States are included in the calculation.

American Cheese: Production by State and United States, October 2001-2002

State	Oct 2001	Sep ¹ 2002	Oct 2002	Change From	
				Oct 2001	Sep 2002
	<i>1,000 Pounds</i>	<i>1,000 Pounds</i>	<i>1,000 Pounds</i>	<i>Percent</i>	<i>Percent</i>
CA	64,725	69,450	65,402	1.0	-5.8
ID	41,097	39,454	38,655	-5.9	-2.0
IA	10,708	10,419	11,641	8.7	11.7
MN	43,497	35,063	42,899	-1.4	22.3
NY	7,382	5,393	4,801	-35.0	-11.0
OH	2,532	2,846	3,164	25.0	11.2
OR	7,337	8,187	8,133	10.8	-0.7
SD	7,087	6,030	6,632	-6.4	10.0
WA	12,109	12,671	13,024	7.6	2.8
WI	68,239	64,804	68,300	0.1	5.4
Oth Sts ²	31,278	31,407	30,490	-2.5	-2.9
US	295,991	285,724	293,141	-1.0	2.6
Atlantic	13,684	9,518	9,741	-28.8	2.3
E N Central	71,923	69,056	73,074	1.6	5.8
W N Central	62,484	52,319	62,164	-0.5	18.8
S Central	3,670	4,632	3,632	-1.0	-21.6
West	144,230	150,199	144,530	0.2	-3.8

¹ Revised.

² States not shown when fewer than 3 plants reported or individual plant operations could be disclosed. Percent change shown only when comparable States are included in the calculation.

Cheddar Cheese: Production by State and United States, October 2001-2002

State	Oct 2001	Sep ¹ 2002	Oct 2002	Change From	
				Oct 2001	Sep 2002
	<i>1,000 Pounds</i>	<i>1,000 Pounds</i>	<i>1,000 Pounds</i>	<i>Percent</i>	<i>Percent</i>
CA	48,310	50,666	44,549	-7.8	-12.1
ID	21,168	16,586	15,306	-27.7	-7.7
MN	42,313	32,611	40,862	-3.4	25.3
NY	7,301	5,302	4,722	-35.3	-10.9
SD	5,136	4,159	3,630	-29.3	-12.7
WA	10,217	10,237	11,091	8.6	8.3
WI	53,828	50,304	53,400	-0.8	6.2
Oth Sts ²	42,675	42,882	42,923	0.6	0.1
US	230,948	212,747	216,483	-6.3	1.8
Atlantic	13,077	9,226	9,484	-27.5	2.8
E N Cen	55,809	52,574	55,891	0.1	6.3
W N Cen	54,309	42,725	51,074	-6.0	19.5
S Cen	3,670	4,632	3,632	-1.0	-21.6
West	104,083	103,590	96,402	-7.4	-6.9

¹ Revised.

² States not shown when fewer than 3 plants reported or individual plant operations could be disclosed. Percent change shown only when comparable States are included in the calculation.

Mozzarella Cheese: Production by State and United States, October 2001-2002

State	Oct 2001	Sep ¹ 2002	Oct 2002	Change From	
				Oct 2001	Sep 2002
	<i>1,000 Pounds</i>	<i>1,000 Pounds</i>	<i>1,000 Pounds</i>	<i>Percent</i>	<i>Percent</i>
CA	59,339	59,210	60,305	1.6	1.8
NY	18,409	15,403	16,871	-8.4	9.5
WI	61,443	66,100	64,300	4.6	-2.7
Oth Sts ²	75,285	81,709	91,826	22.0	12.4
US	214,476	222,422	233,302	8.8	4.9
Atlantic ³	40,419	36,574	39,394	-2.5	7.7
E N Central	71,662	76,583	76,466	6.7	-0.2
West	86,277	94,055	101,347	17.5	7.8

¹ Revised.

² States not shown when fewer than 3 plants reported or individual plant operations could be disclosed. Percent change shown only when comparable States are included in the calculation.

³ Region totals may not add to U.S. when compiled regions could not be disclosed.

Butter: Production by State and United States, October 2001-2002

State	Oct 2001	Sep ¹ 2002	Oct 2002	Change From	
				Oct 2001	Sep 2002
	<i>1,000 Pounds</i>	<i>1,000 Pounds</i>	<i>1,000 Pounds</i>	<i>Percent</i>	<i>Percent</i>
CA	30,192	28,549	27,252	-9.7	-4.5
NY	2,032	2,108	1,556	-23.4	-26.2
PA	6,012	4,811	5,846	-2.8	21.5
WA	8,873	7,992	9,695	9.3	21.3
WI	31,181	22,900	26,600	-14.7	16.2
Oth Sts ²	31,621	25,904	31,172	-1.4	20.3
US	109,911	92,264	102,121	-7.1	10.7
N Atlantic ³	11,415	9,379	11,014	-3.5	17.4
E N Central	34,416	26,205	30,536	-11.3	16.5
W N Central	8,881	6,211	7,492	-15.6	20.6
West	44,136	41,503	42,044	-4.7	1.3

¹ Revised.

² States not shown when fewer than 3 plants reported or individual plant operations could be disclosed. Percent change shown only when comparable States are included in the calculation.

³ Region totals may not add to U.S. when compiled regions could not be disclosed.

**Nonfat Dry Milk, Human: Production by State
and United States, October 2001-2002**

State	Oct 2001	Sep ¹ 2002	Oct 2002	Change From	
				Oct 2001	Sep 2002
	<i>1,000 Pounds</i>	<i>1,000 Pounds</i>	<i>1,000 Pounds</i>	<i>Percent</i>	<i>Percent</i>
CA	55,292	51,571	55,368	0.1	7.4
ID	8,542	6,318	5,990	-29.9	-5.2
WA	15,697	14,568	14,819	-5.6	1.7
Oth Sts ²	26,257	21,306	23,569	-10.2	10.6
US	105,788	93,763	99,746	-5.7	6.4
Atlantic	9,604	3,823	4,415	-54.0	15.5
E N Central	2,646	1,686	2,379	-10.1	41.1
W N Central	4,796	4,143	4,341	-9.5	4.8
S Central	1,380	1,879	2,349	70.2	25.0
West	87,362	82,232	86,262	-1.3	4.9

¹ Revised.

² States not shown when fewer than 3 plants reported or individual plant operations could be disclosed. Percent change shown only when comparable States are included in the calculation.

**Dry Whey, Human: Production by State
and United States, October 2001-2002**

State	Oct 2001	Sep ¹ 2002	Oct 2002	Change From	
				Oct 2001	Sep 2002
	<i>1,000 Pounds</i>	<i>1,000 Pounds</i>	<i>1,000 Pounds</i>	<i>Percent</i>	<i>Percent</i>
CA	10,588	13,285	13,991	32.1	5.3
MN	5,517	6,262	6,870	24.5	9.7
NY	8,954	9,257	9,470	5.8	2.3
PA	6,759	8,360	8,769	29.7	4.9
WA	7,128	8,460	7,325	2.8	-13.4
WI	22,130	24,765	25,800	16.6	4.2
Oth Sts ²	14,268	14,466	15,942	11.7	10.2
US	75,344	84,855	88,167	17.0	3.9
Atlantic	15,713	17,617	18,239	16.1	3.5
Central	37,940	41,224	44,096	16.2	7.0
West	21,691	26,014	25,832	19.1	-0.7

¹ Revised.

² States not shown when fewer than 3 plants reported or individual plant operations could be disclosed. Percent change shown only when comparable States are included in the calculation.

Ice Cream, Hard: Production by State and United States, October 2001-2002

State	Oct 2001	Sep ¹ 2002	Oct 2002	Change From	
				Oct 2001	Sep 2002
	<i>1,000 Gallons</i>	<i>1,000 Gallons</i>	<i>1,000 Gallons</i>	<i>Percent</i>	<i>Percent</i>
CA	9,380	10,501	8,315	-11.4	-20.8
FL	1,889	1,750	1,600	-15.3	-8.6
IL	2,663	3,011	2,607	-2.1	-13.4
IN	7,154	6,764	7,465	4.3	10.4
MD	1,215	1,690	1,214	-0.1	-28.2
MA	5,154	5,263	6,169	19.7	17.2
MI	1,810	1,814	1,772	-2.1	-2.3
MN	3,693	4,343	3,188	-13.7	-26.6
NH	8	16	8		-50.0
NY	2,241	2,500	2,600	16.0	4.0
NC	1,236	1,214	1,689	36.7	39.1
OH	2,725	2,833	2,602	-4.5	-8.2
OR	816	800	820	0.5	2.5
PA	3,330	4,106	3,897	17.0	-5.1
SD	3	2	2	-33.3	
TN	1,413	1,169	1,141	-19.2	-2.4
TX	3,950	4,303	4,100	3.8	-4.7
UT	1,104	1,037	1,034	-6.3	-0.3
WA	1,048	866	821	-21.7	-5.2
Oth Sts ²	16,763	16,299	19,141	14.2	17.4
US	67,595	70,281	70,185	3.8	-0.1
N Atlantic	13,237	14,284	15,518	17.2	8.6
S Atlantic	5,650	5,936	5,981	5.9	0.8
E N Central	15,104	15,261	15,243	0.9	-0.1
W N Central	10,317	10,856	11,162	8.2	2.8
S Central	8,160	8,481	8,539	4.6	0.7
West	15,127	15,463	13,742	-9.2	-11.1

¹ Revised.

² States not shown when fewer than 3 plants reported or individual plant operations could be disclosed. Percent change shown only when comparable States are included in the calculation.

**Canned Milk and Dry Milk Products: Manufacturers' Shipments,
Stocks, and Selling Prices, October, 2001-2002**

Product	Oct 2001	Sep 2002 ¹	Oct 2002	Change From	
				Oct 2001	Sep 2002
Manufacturers' Shipments ²					
	<i>1,000 Pounds</i>	<i>1,000 Pounds</i>	<i>1,000 Pounds</i>	<i>Percent</i>	<i>Percent</i>
Nonfat Dry Milk, Human	126,387	139,548	138,497	9.6	-0.8
Manufacturers' Stocks End-of-Month ³					
	<i>1,000 Pounds</i>	<i>1,000 Pounds</i>	<i>1,000 Pounds</i>	<i>Percent</i>	<i>Percent</i>
Canned Evaporated and Condensed Whole Milk	56,914	81,363	61,451	8.0	-24.5
Nonfat Dry Milk, Human	102,151	84,705	73,624	-27.9	-13.1
Dry Buttermilk, Total	3,724	8,554	7,859	111.0	-8.1

¹ Revised.

² For dry products, shipments of bulk goods only.

³ Stocks held by manufacturers at all points and in transit.

Procedures and Reliability: Estimates included in this report are based on data provided each month by manufacturers of these products. In 32 States, the State Departments of Agriculture assist in collection of data, which eliminates duplicate reporting and reduces respondent burden. Data are collected by mail, personal and telephone interviews following the close of each month. There were 1,165 manufacturers that made one or more products in 2001. Each month, reports are generally received from all dairy plants in States with small numbers of plants. In States with large numbers of plants, survey procedures are designed to obtain monthly reports from all large plants and from a sample of small plants. Monthly estimates are based upon returns from about 70 percent of the plants which account for 70 to 90 percent of the total production of major dairy products.

Revision Policy: Monthly estimates are subject to revision the month following the preliminary estimates. Annual estimates are published in the "**Dairy Products**" report published each April which includes any revisions made to current and previous year. In preparing the annual report, an attempt is made to get information from all plants.

The next "Dairy Products" report will be released at 3 p.m. ET on January 3, 2003.

The United States Department of Agriculture (USDA) prohibits discrimination in all its programs on the basis of race, color, national origin, gender, religion, age, disability, political beliefs, sexual orientation, and marital or family status. (Not all prohibited bases apply to all programs.) Persons with disabilities who require alternative means for communication of program information (braille, large print, audiotape, etc.) should contact the USDA's TARGET Center at 202-720-2600 (voice and TDD).

To file a complaint of discrimination, write USDA, Director, Office of Civil Rights, Room 326-W, Whitten Building, 1400 Independence Avenue, SW, Washington, D.C., 20250-9410, or call 202-720-5964 (voice or TDD). USDA is an equal opportunity provider and employer.

ACCESS TO REPORTS!!

For your convenience, there are several ways to obtain NASS reports, data products, and services:

INTERNET ACCESS

All NASS reports are available free of charge on the worldwide Internet. For access, connect to the Internet and go to the NASS Home Page at: <http://www.usda.gov/nass/>. Select "Today's Reports" or Publications and then Reports Calendar or Publications and then Search, by Title or Subject.

E-MAIL SUBSCRIPTION

All NASS reports are available by subscription free of charge direct to your e-mail address. Starting with the NASS Home Page at <http://www.usda.gov/nass/>, click on **Publications**, then click on the **Subscribe by E-mail** button which takes you to the page describing e-mail delivery of reports. Finally, click on **Go to the Subscription Page** and follow the instructions.

AUTOFAX ACCESS

NASSFax service is available for some reports from your fax machine. Please call 202-720-2000, using the handset attached to your fax. Respond to the voice prompts. Document 0411 is a list of available reports.

PRINTED REPORTS OR DATA PRODUCTS

CALL OUR TOLL-FREE ORDER DESK: 800-999-6779 (U.S. and Canada)
Other areas, please call 703-605-6220 FAX: 703-605-6900
(Visa, MasterCard, check, or money order acceptable for payment.)

ASSISTANCE

For **assistance** with general agricultural statistics or further information about NASS or its products or services, contact the **Agricultural Statistics Hotline** at **800-727-9540**, 7:30 a.m. to 4:00 p.m. ET, or e-mail: nass@nass.usda.gov.
