

Released January 3, 2003, by the National Agricultural Statistics Service (NASS), Agricultural Statistics Board, U.S. Department of Agriculture. For information on "Dairy Products" call Kevin Pautler at (202) 720-9168, office hours 6:45 a.m. to 3:30 p.m. ET.

November 2002 Highlights

Total cheese output (excluding cottage cheese) was 712 million pounds, 3.0 percent above November 2001 but 0.8 percent below October 2002.

American type cheese production totaled 292 million pounds, 2.0 percent above November 2001 but 1.1 percent below October 2002.

Butter production was 103 million pounds in November, 3.1 percent above November 2001 and 1.1 percent above October 2002.

Frozen dessert: (comparisons with November 2001)

Ice cream, Regular (hard) --- 59.2 million gallons, up 0.1 percent.

Ice cream, Lowfat (total) --- 22.0 million gallons, down 13.0 percent.

Ice cream, Nonfat (hard) --- 1.48 million gallons, up 11.0 percent.

Sherbet (hard) --- 3.11 million gallons, up 3.2 percent.

Frozen Yogurt (total) --- 5.56 million gallons, up 4.3 percent.

Nonfat dry milk for human food: (compared with November 2001) --- 96.2 million pounds, down 10.2 percent.

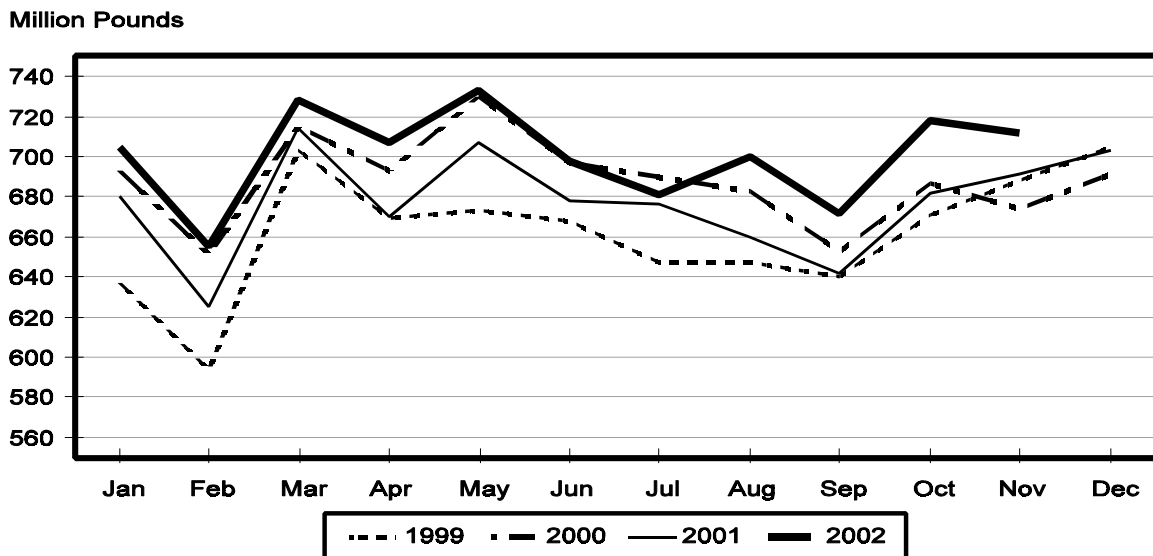
Dry whey products: (comparisons with November 2001)

Dry whey, human --- 85.2 million pounds, up 9.8 percent.

Dry whey, animal --- 5.60 million pounds, up 18.7 percent.

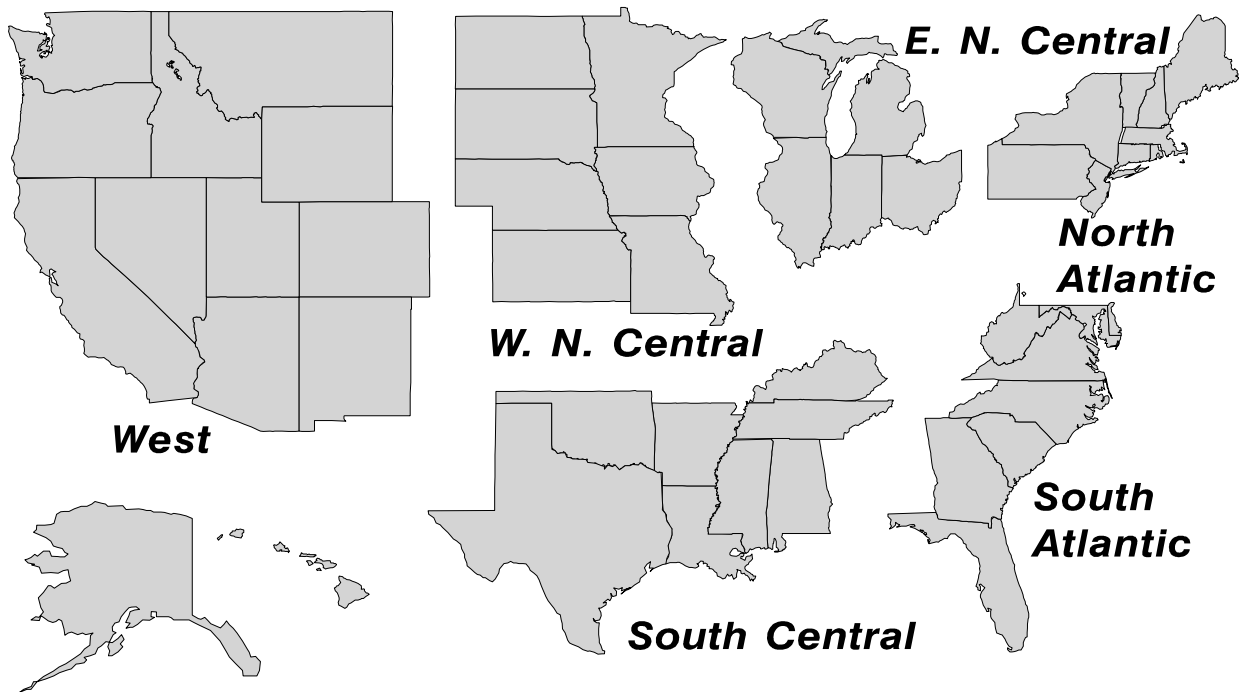
Dry whey, total --- 90.8 million pounds, up 10.3 percent.

Total Cheese Production United States



U. S. Geographic Regions Dairy Products

State totals are not published when fewer than 3 firms have reported or one firm comprises more than 60 percent of the State total. If we are not able to publish a region for confidentiality reasons, it will be combined with other regions when possible. For example, if North Atlantic can not be published, then it will be combined with South Atlantic to publish Atlantic. The West North Central and East North Central will be combined, if necessary, to form North Central. In the event that neither could be published, they may be combined with South Central to publish Central. Some tables will have only limited regions shown, therefore the regions may not add to the United States total.



**Dairy Products: Production by Product,
United States, November, 2001-2002**

Product	Nov 2001	Oct 2002 ¹	Nov 2002	Change From	
				Nov 2001	Oct 2002
	<i>1,000 Pounds</i>	<i>1,000 Pounds</i>	<i>1,000 Pounds</i>	<i>Percent</i>	<i>Percent</i>
Butter	100,079	102,084	103,221	3.1	1.1
Cheese					
American Types ²	286,276	295,418	292,021	2.0	-1.1
Cheddar	217,992	218,033	218,503	0.2	0.2
Swiss	19,779	22,799	21,708	9.8	-4.8
Brick and Muenster	7,143	8,624	7,185	0.6	-16.7
Cream and Neufchatel	69,175	64,018	70,958	2.6	10.8
Hispanic	8,735	10,857	9,778	11.9	-9.9
Mozzarella	224,558	234,071	231,414	3.1	-1.1
Other Italian Types	58,554	62,939	62,438	6.6	-0.8
Total Italian Types	283,112	297,010	293,852	3.8	-1.1
All Other Types	17,009	18,863	16,265	-4.4	-13.8
Total	691,229	717,589	711,767	3.0	-0.8
Cottage Cheese, Curd ³	35,407	38,499	33,739	-4.7	-12.4
Cottage Cheese, Cream ⁴	29,778	31,595	27,519	-7.6	-12.9
Cottage Cheese, Lowfat ⁵	28,402	32,633	27,766	-2.2	-14.9
Canned Evaporated and					
Condensed Whole Milk	41,933	49,461	45,252	7.9	-8.5
Dry Whole Milk	3,267	5,488	3,433	5.1	-37.4
Nonfat Dry Milk, Human	107,211	99,746	96,246	-10.2	-3.5
Dry Skim Milk, Animal	292	443	332	13.7	-25.1
Dry Buttermilk	4,415	3,567	3,710	-16.0	4.0
Yogurt, Plain & Flavored	143,349	175,345	149,740	4.5	-14.6
	<i>1,000 Gallons</i>	<i>1,000 Gallons</i>	<i>1,000 Gallons</i>	<i>Percent</i>	<i>Percent</i>
Frozen Products					
Ice Cream, Hard	59,123	70,472	59,199	0.1	-16.0
Ice Cream, Lowfat, Hard	5,238	7,877	6,028	15.1	-23.5
Ice Cream, Lowfat, Soft	20,001	20,943	15,927	-20.4	-24.0
Ice Cream, Lowfat, Total	25,239	28,820	21,955	-13.0	-23.8
Ice Cream, Nonfat, Hard	1,333	1,574	1,479	11.0	-6.0
Sherbet, Hard	3,010	4,274	3,107	3.2	-27.3
Water and Juice Ices	3,007	4,468	3,035	0.9	-32.1
Frozen Yogurt, Total	5,329	6,346	5,559	4.3	-12.4
Regular & Lowfat, Hard	1,722	2,150	1,770	2.8	-17.7
Nonfat, Hard	793	1,043	964	21.6	-7.6
Other Frozen Dairy					
Products	594	647	507	-14.6	-21.6
Mix for Frozen Products					
Ice Cream Mix	34,153	42,030	36,980	8.3	-12.0
Ice Cream, Lowfat, Mix	13,834	15,978	12,171	-12.0	-23.8
Ice Cream, Nonfat, Mix	817	904	950	16.3	5.1
Sherbet Mix	2,164	3,026	2,362	9.1	-21.9
Yogurt Mix	2,787	3,733	3,270	17.3	-12.4

¹ Revised.

² Includes Cheddar, Colby, Monterey, and Jack.

³ Mostly used for processing into cream or lowfat cottage cheese.

⁴ Fat content 4 percent or more.

⁵ Fat content less than 4 percent.

**Whey and Modified Whey Products: Production, Stocks,
and Prices, United States, November, 2001-2002**

Product	Nov 2001	Oct 2002 ¹	Nov 2002	Change From	
				Nov 2001	Oct 2002
Production					
	<i>1,000 Pounds</i>	<i>1,000 Pounds</i>	<i>1,000 Pounds</i>	<i>Percent</i>	<i>Percent</i>
Condensed Whey, Solids Content ²					
Sweet-Type, Human	4,891	6,621	6,194	26.6	-6.4
Sweet-Type, Animal ³	1,267				
Dry Whey Products					
Dry Whey, Human	77,574	88,637	85,198	9.8	-3.9
Dry Whey, Animal	4,721	4,528	5,604	18.7	23.8
Dry Whey, Total	82,295	93,165	90,802	10.3	-2.5
Reduced Lactose and Minerals					
Human Food	7,098	4,371	3,821	-46.2	-12.6
Animal Feed	3,188	3,543	3,199	0.3	-9.7
Lactose, Human and Animal	43,984	48,603	47,853	8.8	-1.5
Whey					
Solids in Wet Blends, Animal	3,495	3,399	3,300	-5.6	-2.9
Protein Concentrate, Human	22,104	27,406	25,807	16.8	-5.8
Protein Concentrate, Animal	3,706	3,408	3,146	-15.1	-7.7
Manufacturers' Stocks End-of-Month ⁴					
	<i>1,000 Pounds</i>	<i>1,000 Pounds</i>	<i>1,000 Pounds</i>	<i>Percent</i>	<i>Percent</i>
Dry Whey Products					
Dry Whey, Human	27,131	32,071	33,636	24.0	4.9
Dry Whey, Animal	2,231	2,179	3,151	41.2	44.6
Reduced Lactose and Minerals					
Human and Animal ⁵	7,418	8,849	8,995	21.3	1.6
Lactose, Human and Animal	20,455	41,825	39,128	91.3	-6.4
Whey Protein Concentrate, Human	14,099	21,542	21,152	50.0	-1.8
Whey Protein Concentrate, Animal	1,799	1,114	1,426	-20.7	28.0
Manufacturers' Selling Price ⁶					
	<i>Cents per Pound</i>	<i>Cents per Pound</i>	<i>Cents per Pound</i>	<i>Cents Change</i>	<i>Cents Change</i>
Dry Whey, Animal	26.6	20.8	21.5	-5.1	0.7

¹ Revised.

² Final marketable product only. Does not include quantity used or shipped to another plant for further processing into dry whey or modified whey products.

³ Not shown when fewer than three plants reported or individual plant operations could be disclosed

⁴ Stocks held by manufacturers at all points and in transit.

⁵ Reduced lactose and minerals stocks combined to avoid disclosure of individual operations.

⁶ Prices for bulk goods, f.o.b. plant. Average monthly prices reported by firms.

**Dairy Products: Production by Product and Month,
United States, 2001-2002 ¹**

Product and Month	By Month			Cumulative		
	2001	2002	Change From 2001	2001	2002	Change From 2001
	<i>1,000 Pounds</i>	<i>1,000 Pounds</i>	<i>Percent</i>	<i>1,000 Pounds</i>	<i>1,000 Pounds</i>	<i>Percent</i>
Total Cheese ³						
Jan	680,299	705,245	3.7	680,299	705,245	3.7
Feb	625,310	654,950	4.7	1,305,609	1,360,195	4.2
Mar	713,722	727,574	1.9	2,019,331	2,087,769	3.4
Apr	670,221	706,962	5.5	2,689,552	2,794,731	3.9
May	706,790	733,204	3.7	3,396,342	3,527,935	3.9
Jun	678,517	697,507	2.8	4,074,859	4,225,442	3.7
Jul	676,018	680,801	0.7	4,750,877	4,906,243	3.3
Aug	660,033	700,163	6.1	5,410,910	5,606,406	3.6
Sep	641,785	671,962	4.7	6,052,695	6,278,368	3.7
Oct	682,080	717,589	5.2	6,734,775	6,995,957	3.9
Nov	691,229	711,767	3.0	7,426,004	7,707,724	3.8
Dec	703,090			8,129,094		
American Cheese						
Jan	300,419	315,166	4.9	300,419	315,166	4.9
Feb	270,134	287,383	6.4	570,553	602,549	5.6
Mar	297,097	318,242	7.1	867,650	920,791	6.1
Apr	291,905	316,800	8.5	1,159,555	1,237,591	6.7
May	308,548	326,180	5.7	1,468,103	1,563,771	6.5
Jun	304,618	310,332	1.9	1,772,721	1,874,103	5.7
Jul	293,372	301,248	2.7	2,066,093	2,175,351	5.3
Aug	281,527	305,826	8.6	2,347,620	2,481,177	5.7
Sep	277,046	285,724	3.1	2,624,666	2,766,901	5.4
Oct	295,991	295,418	-0.2	2,920,657	3,062,319	4.9
Nov	286,276	292,021	2.0	3,206,933	3,354,340	4.6
Dec	312,229			3,519,162		
Cheddar Cheese						
Jan	236,611	246,156	4.0	236,611	246,156	4.0
Feb	211,627	224,971	6.3	448,238	471,127	5.1
Mar	233,113	249,156	6.9	681,351	720,283	5.7
Apr	229,129	249,284	8.8	910,480	969,567	6.5
May	244,614	256,090	4.7	1,155,094	1,225,657	6.1
Jun	239,366	240,492	0.5	1,394,460	1,466,149	5.1
Jul	230,631	228,334	-1.0	1,625,091	1,694,483	4.3
Aug	216,481	227,667	5.2	1,841,572	1,922,150	4.4
Sep	216,267	212,747	-1.6	2,057,839	2,134,897	3.7
Oct	230,948	218,033	-5.6	2,288,787	2,352,930	2.8
Nov	217,992	218,503	0.2	2,506,779	2,571,433	2.6
Dec	239,698			2,746,477		

See footnote(s) at end of table.

--continued

**Dairy Products: Production by Product and Month,
United States, 2001-2002 ¹ (continued)**

Product and Month	By Month			Cumulative		
	2001	2002	Change From 2001	2001	2002	Change From 2001
	<i>1,000 Pounds</i>	<i>1,000 Pounds</i>	<i>Percent</i>	<i>1,000 Pounds</i>	<i>1,000 Pounds</i>	<i>Percent</i>
Italian Cheese ³						
Jan	284,866	290,176	1.9	284,866	290,176	1.9
Feb	268,060	273,836	2.2	552,926	564,012	2.0
Mar	302,583	301,373	-0.4	855,509	865,385	1.2
Apr	272,459	285,574	4.8	1,127,968	1,150,959	2.0
May	286,039	299,574	4.7	1,414,007	1,450,533	2.6
Jun	269,665	277,898	3.1	1,683,672	1,728,431	2.7
Jul	275,857	273,538	-0.8	1,959,529	2,001,969	2.2
Aug	266,736	281,382	5.5	2,226,265	2,283,351	2.6
Sep	262,616	274,086	4.4	2,488,881	2,557,437	2.8
Oct	265,763	297,010	11.8	2,754,644	2,854,447	3.6
Nov	283,112	293,852	3.8	3,037,756	3,148,299	3.6
Dec	290,516			3,328,272		
Mozzarella ³						
Jan	226,475	231,799	2.4	226,475	231,799	2.4
Feb	214,507	221,288	3.2	440,982	453,087	2.7
Mar	238,805	242,717	1.6	679,787	695,804	2.4
Apr	215,432	228,145	5.9	895,219	923,949	3.2
May	230,249	242,705	5.4	1,125,468	1,166,654	3.7
Jun	222,013	226,453	2.0	1,347,481	1,393,107	3.4
Jul	224,953	219,089	-2.6	1,572,434	1,612,196	2.5
Aug	211,184	225,620	6.8	1,783,618	1,837,816	3.0
Sep	212,654	222,422	4.6	1,996,272	2,060,238	3.2
Oct	214,476	234,071	9.1	2,210,748	2,294,309	3.8
Nov	224,558	231,414	3.1	2,435,306	2,525,723	3.7
Dec	230,443			2,665,749		
Other Italian						
Jan	58,391	58,377		58,391	58,377	
Feb	53,553	52,548	-1.9	111,944	110,925	-0.9
Mar	63,778	58,656	-8.0	175,722	169,581	-3.5
Apr	57,027	57,429	0.7	232,749	227,010	-2.5
May	55,790	56,869	1.9	288,539	283,879	-1.6
Jun	47,652	51,445	8.0	336,191	335,324	-0.3
Jul	50,904	54,449	7.0	387,095	389,773	0.7
Aug	55,552	55,762	0.4	442,647	445,535	0.7
Sep	49,962	51,664	3.4	492,609	497,199	0.9
Oct	51,287	62,939	22.7	543,896	560,138	3.0
Nov	58,554	62,438	6.6	602,450	622,576	3.3
Dec	60,073			662,523		

See footnote(s) at end of table.

--continued

**Dairy Products: Production by Product and Month,
United States, 2001-2002 ¹ (continued)**

Product and Month	By Month			Cumulative		
	2001	2002	Change From 2001	2001	2002	Change From 2001
	<i>1,000 Pounds</i>	<i>1,000 Pounds</i>	<i>Percent</i>	<i>1,000 Pounds</i>	<i>1,000 Pounds</i>	<i>Percent</i>
Butter						
Jan	127,356	140,687	10.5	127,356	140,687	10.5
Feb	111,809	125,352	12.1	239,165	266,039	11.2
Mar	111,374	128,966	15.8	350,539	395,005	12.7
Apr	108,975	132,406	21.5	459,514	527,411	14.8
May	111,001	126,533	14.0	570,515	653,944	14.6
Jun	86,783	96,905	11.7	657,298	750,849	14.2
Jul	84,210	93,975	11.6	741,508	844,824	13.9
Aug	75,557	88,512	17.1	817,065	933,336	14.2
Sep	86,721	92,264	6.4	903,786	1,025,600	13.5
Oct	109,911	102,084	-7.1	1,013,697	1,127,684	11.2
Nov	100,079	103,221	3.1	1,113,776	1,230,905	10.5
Dec	123,025			1,236,801		
Nonfat Dry Milk, Human						
Jan	118,299	118,892	0.5	118,299	118,892	0.5
Feb	119,068	125,838	5.7	237,367	244,730	3.1
Mar	121,080	147,761	22.0	358,447	392,491	9.5
Apr	131,695	158,291	20.2	490,142	550,782	12.4
May	140,423	158,062	12.6	630,565	708,844	12.4
Jun	131,455	147,643	12.3	762,020	856,487	12.4
Jul	117,452	123,733	5.3	879,472	980,220	11.5
Aug	96,127	114,408	19.0	975,599	1,094,628	12.2
Sep	94,396	93,763	-0.7	1,069,995	1,188,391	11.1
Oct	105,788	99,746	-5.7	1,175,783	1,288,137	9.6
Nov	107,211	96,246	-10.2	1,282,994	1,384,383	7.9
Dec	130,805			1,413,799		
Total Dry Whey ²						
Jan	88,994	90,205	1.4	88,994	90,205	1.4
Feb	84,053	85,878	2.2	173,047	176,083	1.8
Mar	93,241	96,495	3.5	266,288	272,578	2.4
Apr	89,600	93,981	4.9	355,888	366,559	3.0
May	94,120	98,373	4.5	450,008	464,932	3.3
Jun	91,432	93,814	2.6	541,440	558,746	3.2
Jul	92,044	93,607	1.7	633,484	652,353	3.0
Aug	83,119	93,862	12.9	716,603	746,215	4.1
Sep	76,322	89,970	17.9	792,925	836,185	5.5
Oct	79,617	93,165	17.0	872,542	929,350	6.5
Nov	82,295	90,802	10.3	954,837	1,020,152	6.8
Dec	90,955			1,045,792		

See footnote(s) at end of table.

--continued

**Dairy Products: Production by Product and Month,
United States, 2001-2002 ¹ (continued)**

Product and Month	By Month			Cumulative		
	2001	2002	Change From 2001	2001	2002	Change From 2001
	<i>1,000 Pounds</i>	<i>1,000 Pounds</i>	<i>Percent</i>	<i>1,000 Pounds</i>	<i>1,000 Pounds</i>	<i>Percent</i>
Cream Cottage Cheese						
Jan	31,088	29,765	-4.3	31,088	29,765	-4.3
Feb	28,137	28,788	2.3	59,225	58,553	-1.1
Mar	32,915	31,520	-4.2	92,140	90,073	-2.2
Apr	29,684	30,502	2.8	121,824	120,575	-1.0
May	33,883	32,554	-3.9	155,707	153,129	-1.7
Jun	31,283	30,388	-2.9	186,990	183,517	-1.9
Jul	32,521	32,100	-1.3	219,511	215,617	-1.8
Aug	33,575	33,145	-1.3	253,086	248,762	-1.7
Sep	29,825	31,651	6.1	282,911	280,413	-0.9
Oct	31,324	31,595	0.9	314,235	312,008	-0.7
Nov	29,778	27,519	-7.6	344,013	339,527	-1.3
Dec	27,512			371,525		
Lowfat Cottage Cheese						
Jan	30,262	29,609	-2.2	30,262	29,609	-2.2
Feb	28,858	30,006	4.0	59,120	59,615	0.8
Mar	32,994	32,509	-1.5	92,114	92,124	
Apr	29,825	30,524	2.3	121,939	122,648	0.6
May	35,011	34,477	-1.5	156,950	157,125	0.1
Jun	30,705	29,559	-3.7	187,655	186,684	-0.5
Jul	31,387	34,416	9.7	219,042	221,100	0.9
Aug	35,659	34,922	-2.1	254,701	256,022	0.5
Sep	29,764	31,669	6.4	284,465	287,691	1.1
Oct	31,192	32,633	4.6	315,657	320,324	1.5
Nov	28,402	27,766	-2.2	344,059	348,090	1.2
Dec	26,825			370,884		
	<i>1,000 Gallons</i>	<i>1,000 Gallons</i>	<i>Percent</i>	<i>1,000 Gallons</i>	<i>1,000 Gallons</i>	<i>Percent</i>
Ice Cream, Hard						
Jan	67,446	70,004	3.8	67,446	70,004	3.8
Feb	67,583	71,034	5.1	135,029	141,038	4.5
Mar	77,071	76,680	-0.5	212,100	217,718	2.6
Apr	78,501	80,214	2.2	290,601	297,932	2.5
May	80,467	76,953	-4.4	371,068	374,885	1.0
Jun	84,752	81,127	-4.3	455,820	456,012	
Jul	82,043	82,404	0.4	537,863	538,416	0.1
Aug	79,827	78,039	-2.2	617,690	616,455	-0.2
Sep	70,197	70,281	0.1	687,887	686,736	-0.2
Oct	67,595	70,472	4.3	755,482	757,208	0.2
Nov	59,123	59,199	0.1	814,605	816,407	0.2
Dec	54,548			869,153		

See footnote(s) at end of table.

--continued

**Dairy Products: Production by Product and Month,
United States, 2001-2002 ¹ (continued)**

Product and Month	By Month			Cumulative		
	2001	2002	Change From 2001	2001	2002	Change From 2001
	<i>1,000 Gallons</i>	<i>1,000 Gallons</i>	<i>Percent</i>	<i>1,000 Gallons</i>	<i>1,000 Gallons</i>	<i>Percent</i>
Ice Cream, Lowfat						
Jan	26,825	22,119	-17.5	26,825	22,119	-17.5
Feb	27,510	24,976	-9.2	54,335	47,095	-13.3
Mar	35,206	31,620	-10.2	89,541	78,715	-12.1
Apr	36,974	36,060	-2.5	126,515	114,775	-9.3
May	41,675	38,960	-6.5	168,190	153,735	-8.6
Jun	43,893	39,773	-9.4	212,083	193,508	-8.8
Jul	41,495	39,421	-5.0	253,578	232,929	-8.1
Aug	39,978	36,811	-7.9	293,556	269,740	-8.1
Sep	31,511	31,353	-0.5	325,067	301,093	-7.4
Oct	30,776	28,820	-6.4	355,843	329,913	-7.3
Nov	25,239	21,955	-13.0	381,082	351,868	-7.7
Dec	25,664			406,746		
Ice Cream, NF, Hard						
Jan	1,369	2,074	51.5	1,369	2,074	51.5
Feb	1,451	1,610	11.0	2,820	3,684	30.6
Mar	1,712	2,034	18.8	4,532	5,718	26.2
Apr	1,558	1,561	0.2	6,090	7,279	19.5
May	1,789	1,543	-13.8	7,879	8,822	12.0
Jun	2,082	1,415	-32.0	9,961	10,237	2.8
Jul	1,655	1,500	-9.4	11,616	11,737	1.0
Aug	1,835	1,462	-20.3	13,451	13,199	-1.9
Sep	1,694	1,406	-17.0	15,145	14,605	-3.6
Oct	1,490	1,574	5.6	16,635	16,179	-2.7
Nov	1,333	1,479	11.0	17,968	17,658	-1.7
Dec	1,204			19,172		
Sherbet, Hard						
Jan	3,552	3,796	6.9	3,552	3,796	6.9
Feb	3,858	4,050	5.0	7,410	7,846	5.9
Mar	4,494	4,786	6.5	11,904	12,632	6.1
Apr	4,227	5,127	21.3	16,131	17,759	10.1
May	5,150	5,417	5.2	21,281	23,176	8.9
Jun	5,310	5,475	3.1	26,591	28,651	7.7
Jul	5,037	5,531	9.8	31,628	34,182	8.1
Aug	4,654	5,094	9.5	36,282	39,276	8.3
Sep	3,731	4,135	10.8	40,013	43,411	8.5
Oct	3,575	4,274	19.6	43,588	47,685	9.4
Nov	3,010	3,107	3.2	46,598	50,792	9.0
Dec	2,870			49,468		

See footnote(s) at end of table.

--continued

**Dairy Products: Production by Product and Month,
United States, 2001-2002¹ (continued)**

Product and Month	By Month			Cumulative		
	2001	2002	Change From 2001	2001	2002	Change From 2001
	<i>1,000 Gallons</i>	<i>1,000 Gallons</i>	<i>Percent</i>	<i>1,000 Gallons</i>	<i>1,000 Gallons</i>	<i>Percent</i>
Frozen Yogurt						
Jan	6,516	5,976	-8.3	6,516	5,976	-8.3
Feb	5,939	6,348	6.9	12,455	12,324	-1.1
Mar	7,388	6,900	-6.6	19,843	19,224	-3.1
Apr	6,970	6,878	-1.3	26,813	26,102	-2.7
May	7,886	7,443	-5.6	34,699	33,545	-3.3
Jun	7,755	6,985	-9.9	42,454	40,530	-4.5
Jul	7,370	7,536	2.3	49,824	48,066	-3.5
Aug	8,067	7,031	-12.8	57,891	55,097	-4.8
Sep	5,895	6,715	13.9	63,786	61,812	-3.1
Oct	5,887	6,346	7.8	69,673	68,158	-2.2
Nov	5,329	5,559	4.3	75,002	73,717	-1.7
Dec	4,597			79,599		

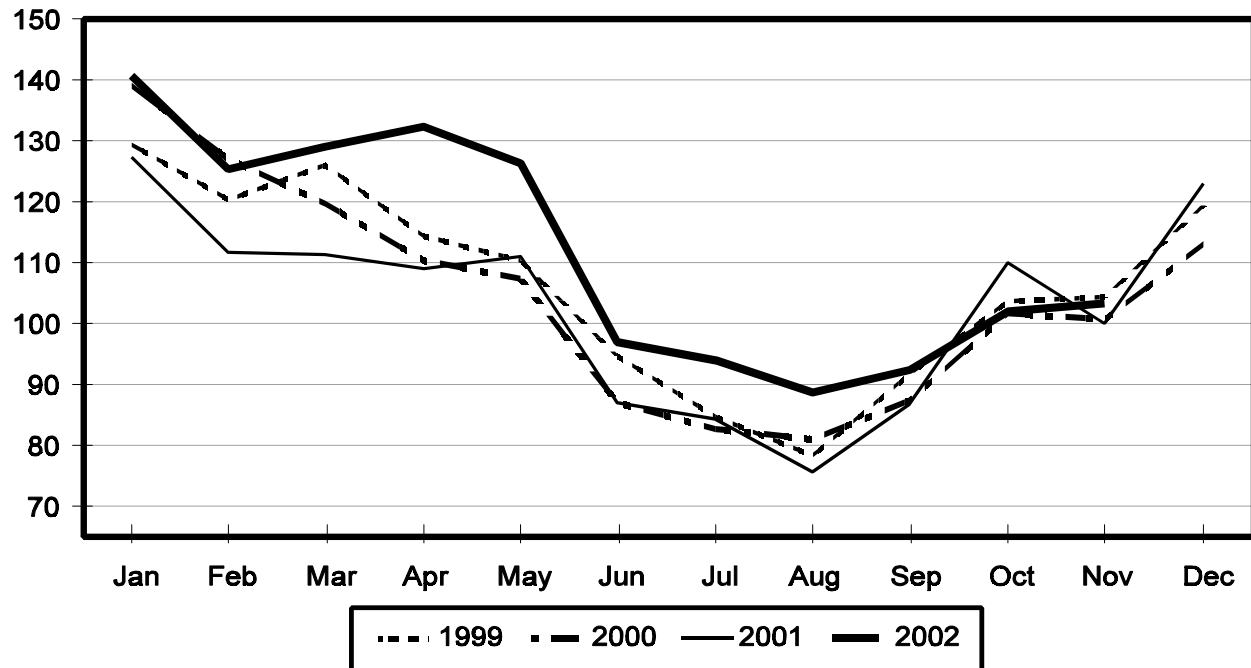
¹ October 2002 data revised.

² Excludes all modified dry whey products.

³ Preliminary revisions for Mozzarella cheese for January through September 2002. Revisions to Mozzarella cheese are reflected in Italian cheese and Total cheese numbers. Annual revisions will be published in April 2003.

Total Butter Production United States

Million Pounds



**Total Cheese, Excluding Cottage Cheese: Production by
State and United States, November 2001-2002**

State	Nov 2001	Oct ¹ 2002	Nov 2002	Change From	
				Nov 2001	Oct 2002
	<i>1,000 Pounds</i>	<i>1,000 Pounds</i>	<i>1,000 Pounds</i>	<i>Percent</i>	<i>Percent</i>
CA	142,591	142,992	145,805	2.3	2.0
ID	50,385	52,996	54,056	7.3	2.0
IL	8,623	9,130	8,322	-3.5	-8.8
IA	22,396	24,114	23,508	5.0	-2.5
MA	70	68	68	-2.9	
MN	47,149	46,331	46,031	-2.4	-0.6
MO	10,300	9,078	9,141	-11.3	0.7
NY	65,240	61,742	67,663	3.7	9.6
OH	12,295	14,577	13,760	11.9	-5.6
PA	32,481	30,750	29,978	-7.7	-2.5
SD	11,593	13,464	13,018	12.3	-3.3
UT	4,611	4,473	4,517	-2.0	1.0
WA	11,537	13,428	13,103	13.6	-2.4
WI	176,016	185,833	177,237	0.7	-4.6
Oth Sts ²	95,942	108,613	105,560	10.0	-2.8
US	691,229	717,589	711,767	3.0	-0.8
N Atlantic	114,343	107,871	111,661	-2.3	3.5
S Atlantic	2,987	3,273	2,913	-2.5	-11.0
E N Central	209,052	223,457	212,074	1.4	-5.1
W N Central	99,929	101,332	100,675	0.7	-0.6
S Central	3,753	6,498	7,210	92.1	11.0
West	261,165	275,158	277,234	6.2	0.8

¹ Revised.

² States not shown when fewer than 3 plants reported or individual plant operations could be disclosed. Percent change shown only when comparable States are included in the calculation.

American Cheese: Production by State and United States, November 2001-2002

State	Nov 2001	Oct ¹ 2002	Nov 2002	Change From	
				Nov 2001	Oct 2002
	<i>1,000 Pounds</i>	<i>1,000 Pounds</i>	<i>1,000 Pounds</i>	<i>Percent</i>	<i>Percent</i>
CA	62,111	65,493	66,463	7.0	1.5
ID	38,057	38,652	38,131	0.2	-1.3
IA	10,210	11,653	11,143	9.1	-4.4
MN	45,056	44,619	44,932	-0.3	0.7
NY	6,617	4,809	5,479	-17.2	13.9
OH	2,669	3,164	2,494	-6.6	-21.2
OR	7,129	8,133	7,834	9.9	-3.7
SD	6,187	6,651	6,405	3.5	-3.7
WA	11,150	13,410	13,077	17.3	-2.5
WI	68,955	68,300	67,990	-1.4	-0.5
Oth Sts ²	28,135	30,534	28,073	-0.2	-8.1
US	286,276	295,418	292,021	2.0	-1.1
Atlantic	12,345	9,749	9,535	-22.8	-2.2
E N Central	72,827	73,074	71,728	-1.5	-1.8
W N Central	62,525	63,912	63,498	1.6	-0.6
S Central	3,261	3,632	3,957	21.3	8.9
West	135,318	145,051	143,303	5.9	-1.2

¹ Revised.

² States not shown when fewer than 3 plants reported or individual plant operations could be disclosed. Percent change shown only when comparable States are included in the calculation.

Cheddar Cheese: Production by State and United States, November 2001-2002

State	Nov 2001	Oct ¹ 2002	Nov 2002	Change From	
				Nov 2001	Oct 2002
	<i>1,000 Pounds</i>	<i>1,000 Pounds</i>	<i>1,000 Pounds</i>	<i>Percent</i>	<i>Percent</i>
CA	44,297	44,549	47,332	6.9	6.2
ID	18,293	15,303	15,192	-17.0	-0.7
MN	42,081	42,727	42,532	1.1	-0.5
NY	6,550	4,733	5,360	-18.2	13.2
SD	4,208	3,649	3,949	-6.2	8.2
WA	8,964	10,687	10,947	22.1	2.4
WI	54,365	53,400	53,900	-0.9	0.9
Oth Sts ²	39,234	42,985	39,291	0.1	-8.6
US	217,992	218,033	218,503	0.2	0.2
Atlantic	11,830	9,495	9,267	-21.7	-2.4
E N Cen	56,404	55,891	55,789	-1.1	-0.2
W N Cen	52,865	52,967	52,974	0.2	
S Cen	3,251	3,632	3,957	21.7	8.9
West	93,642	96,048	96,516	3.1	0.5

¹ Revised.

² States not shown when fewer than 3 plants reported or individual plant operations could be disclosed. Percent change shown only when comparable States are included in the calculation.

Mozzarella Cheese: Production by State and United States, November 2001-2002

State	Nov 2001	Oct ¹ 2002	Nov 2002	Change From	
				Nov 2001	Oct 2002
	<i>1,000 Pounds</i>	<i>1,000 Pounds</i>	<i>1,000 Pounds</i>	<i>Percent</i>	<i>Percent</i>
CA	60,217	60,351	61,936	2.9	2.6
NY	17,939	17,197	17,197	-4.1	
WI	59,727	64,300	59,400	-0.5	-7.6
Oth Sts ²	86,675	92,223	92,881	7.2	0.7
US	224,558	234,071	231,414	3.1	-1.1
Atlantic ³	42,003	39,724	39,299	-6.4	-1.1
E N Central	70,692	76,466	71,062	0.5	-7.1
West	95,874	101,786	104,299	8.8	2.5

¹ Revised.

² States not shown when fewer than 3 plants reported or individual plant operations could be disclosed. Percent change shown only when comparable States are included in the calculation.

³ Region totals may not add to U.S. when compiled regions could not be disclosed.

Butter: Production by State and United States, November 2001-2002

State	Nov 2001	Oct ¹ 2002	Nov 2002	Change From	
				Nov 2001	Oct 2002
	<i>1,000 Pounds</i>	<i>1,000 Pounds</i>	<i>1,000 Pounds</i>	<i>Percent</i>	<i>Percent</i>
CA	29,136	27,252	28,794	-1.2	5.7
NY	1,708	1,556	1,777	4.0	14.2
PA	5,370	5,846	6,062	12.9	3.7
WA	7,969	9,695	7,866	-1.3	-18.9
WI	28,337	26,565	28,400	0.2	6.9
Oth Sts ²	27,559	31,170	30,322	10.0	-2.7
US	100,079	102,084	103,221	3.1	1.1
N Atlantic ³	9,650	11,014	10,413	7.9	-5.5
E N Central	31,696	30,501	32,096	1.3	5.2
W N Central	7,532	7,492	8,134	8.0	8.6
West	41,877	42,042	41,623	-0.6	-1.0

¹ Revised.

² States not shown when fewer than 3 plants reported or individual plant operations could be disclosed. Percent change shown only when comparable States are included in the calculation.

³ Region totals may not add to U.S. when compiled regions could not be disclosed.

**Nonfat Dry Milk, Human: Production by State
and United States, November 2001-2002**

State	Nov 2001	Oct ¹ 2002	Nov 2002	Change From	
				Nov 2001	Oct 2002
	<i>1,000 Pounds</i>	<i>1,000 Pounds</i>	<i>1,000 Pounds</i>	<i>Percent</i>	<i>Percent</i>
CA	57,298	55,368	52,652	-8.1	-4.9
ID	8,015	5,990	4,796	-40.2	-19.9
WA	14,081	14,819	13,524	-4.0	-8.7
Oth Sts ²	27,817	23,569	25,274	-9.1	7.2
US	107,211	99,746	96,246	-10.2	-3.5
Atlantic	8,884	4,415	6,253	-29.6	41.6
E N Central	2,314	2,379	2,481	7.2	4.3
W N Central	6,042	4,341	5,439	-10.0	25.3
S Central	2,255	2,349	3,509	55.6	49.4
West	87,716	86,262	78,564	-10.4	-8.9

¹ Revised.

² States not shown when fewer than 3 plants reported or individual plant operations could be disclosed. Percent change shown only when comparable States are included in the calculation.

**Dry Whey, Human: Production by State
and United States, November 2001-2002**

State	Nov 2001	Oct ¹ 2002	Nov 2002	Change From	
				Nov 2001	Oct 2002
	<i>1,000 Pounds</i>	<i>1,000 Pounds</i>	<i>1,000 Pounds</i>	<i>Percent</i>	<i>Percent</i>
CA	11,433	13,991	13,280	16.2	-5.1
MN	5,320	7,147	6,220	16.9	-13.0
NY	9,382	9,470	8,609	-8.2	-9.1
PA	7,830	8,769	8,133	3.9	-7.3
WA	7,355	7,325	8,083	9.9	10.3
WI	21,835	26,172	26,300	20.4	0.5
Oth Sts ²	14,419	15,763	14,573	1.1	-7.5
US	77,574	88,637	85,198	9.8	-3.9
Atlantic	17,212	18,239	16,742	-2.7	-8.2
Central	38,060	44,730	43,027	13.1	-3.8
West	22,302	25,668	25,429	14.0	-0.9

¹ Revised.

² States not shown when fewer than 3 plants reported or individual plant operations could be disclosed. Percent change shown only when comparable States are included in the calculation.

Ice Cream, Hard: Production by State and United States, November 2001-2002

State	Nov 2001	Oct ¹ 2002	Nov 2002	Change From	
				Nov 2001	Oct 2002
	<i>1,000 Gallons</i>	<i>1,000 Gallons</i>	<i>1,000 Gallons</i>	<i>Percent</i>	<i>Percent</i>
CA	7,627	8,601	7,428	-2.6	-13.6
FL	1,516	1,600	1,750	15.4	9.4
IL	1,919	2,607	2,217	15.5	-15.0
IN	6,642	7,465	5,300	-20.2	-29.0
MD	931	1,214	932	0.1	-23.2
MA	3,952	6,169	4,222	6.8	-31.6
MI	1,296	1,772	1,308	0.9	-26.2
MN	3,770	3,188	3,020	-19.9	-5.3
NH	7	8	7		-12.5
NY	1,777	2,600	2,200	23.8	-15.4
NC	994	1,689	1,075	8.1	-36.4
OH	2,240	2,602	2,034	-9.2	-21.8
OR	763	820	780	2.2	-4.9
PA	3,097	3,897	3,131	1.1	-19.7
SD	1	2	2	100.0	
TN	1,352	1,141	1,300	-3.8	13.9
TX	3,927	4,100	4,080	3.9	-0.5
UT	1,381	1,034	960	-30.5	-7.2
WA	1,283	821	793	-38.2	-3.4
Oth Sts ²	14,648	19,142	16,660	13.7	-13.0
US	59,123	70,472	59,199	0.1	-16.0
N Atlantic	11,070	15,517	11,702	5.7	-24.6
S Atlantic	4,258	5,981	5,046	18.5	-15.6
E N Central	12,771	15,243	11,514	-9.8	-24.5
W N Central	9,641	11,162	10,494	8.8	-6.0
S Central	7,870	8,539	8,083	2.7	-5.3
West	13,513	14,030	12,360	-8.5	-11.9

¹ Revised.

² States not shown when fewer than 3 plants reported or individual plant operations could be disclosed. Percent change shown only when comparable States are included in the calculation.

**Canned Milk and Dry Milk Products: Manufacturers' Shipments,
Stocks, and Selling Prices, November, 2001-2002**

Product	Nov 2001	Oct 2002 ¹	Nov 2002	Change From	
				Nov 2001	Oct 2002
Manufacturers' Shipments ²					
	<i>1,000 Pounds</i>	<i>1,000 Pounds</i>	<i>1,000 Pounds</i>	<i>Percent</i>	<i>Percent</i>
Nonfat Dry Milk, Human	125,211	124,497	110,288	-11.9	-11.4
Manufacturers' Stocks End-of-Month ³					
	<i>1,000 Pounds</i>	<i>1,000 Pounds</i>	<i>1,000 Pounds</i>	<i>Percent</i>	<i>Percent</i>
Canned Evaporated and Condensed Whole Milk	48,278	61,451	57,131	18.3	-7.0
Nonfat Dry Milk, Human	102,785	79,410	85,974	-16.4	8.3
Dry Buttermilk, Total	4,129	7,495	6,550	58.6	-12.6

¹ Revised.

² For dry products, shipments of bulk goods only.

³ Stocks held by manufacturers at all points and in transit.

Procedures and Reliability: Estimates included in this report are based on data provided each month by manufacturers of these products. In 32 States, the State Departments of Agriculture assist in collection of data, which eliminates duplicate reporting and reduces respondent burden. Data are collected by mail, personal and telephone interviews following the close of each month. There were 1,165 manufacturers that made one or more products in 2001. Each month, reports are generally received from all dairy plants in States with small numbers of plants. In States with large numbers of plants, survey procedures are designed to obtain monthly reports from all large plants and from a sample of small plants. Monthly estimates are based upon returns from about 70 percent of the plants which account for 70 to 90 percent of the total production of major dairy products.

Revision Policy: Monthly estimates are subject to revision the month following the preliminary estimates. Annual estimates are published in the "**Dairy Products**" report published each April which includes any revisions made to current and previous year. In preparing the annual report, an attempt is made to get information from all plants.

The next "Dairy Products" report will be released at 3 p.m. ET on February 4, 2003.

The United States Department of Agriculture (USDA) prohibits discrimination in all its programs on the basis of race, color, national origin, gender, religion, age, disability, political beliefs, sexual orientation, and marital or family status. (Not all prohibited bases apply to all programs.) Persons with disabilities who require alternative means for communication of program information (braille, large print, audiotape, etc.) should contact the USDA's TARGET Center at 202-720-2600 (voice and TDD).

To file a complaint of discrimination, write USDA, Director, Office of Civil Rights, Room 326-W, Whitten Building, 1400 Independence Avenue, SW, Washington, D.C., 20250-9410, or call 202-720-5964 (voice or TDD). USDA is an equal opportunity provider and employer.

ACCESS TO REPORTS!!

For your convenience, there are several ways to obtain NASS reports, data products, and services:

INTERNET ACCESS

All NASS reports are available free of charge on the worldwide Internet. For access, connect to the Internet and go to the NASS Home Page at: <http://www.usda.gov/nass/>. Select "Today's Reports" or Publications and then Reports Calendar or Publications and then Search, by Title or Subject.

E-MAIL SUBSCRIPTION

All NASS reports are available by subscription free of charge direct to your e-mail address. Starting with the NASS Home Page at <http://www.usda.gov/nass/>, click on **Publications**, then click on the **Subscribe by E-mail** button which takes you to the page describing e-mail delivery of reports. Finally, click on **Go to the Subscription Page** and follow the instructions.

AUTOFAX ACCESS

NASSFax service is available for some reports from your fax machine. Please call 202-720-2000, using the handset attached to your fax. Respond to the voice prompts. Document 0411 is a list of available reports.

PRINTED REPORTS OR DATA PRODUCTS

CALL OUR TOLL-FREE ORDER DESK: 800-999-6779 (U.S. and Canada)
Other areas, please call 703-605-6220 FAX: 703-605-6900
(Visa, MasterCard, check, or money order acceptable for payment.)

ASSISTANCE

For **assistance** with general agricultural statistics or further information about NASS or its products or services, contact the **Agricultural Statistics Hotline** at **800-727-9540**, 7:30 a.m. to 4:00 p.m. ET, or e-mail: nass@nass.usda.gov.
