

Released March 4, 2003, by the National Agricultural Statistics Service (NASS), Agricultural Statistics Board, U.S. Department of Agriculture. For information on "Dairy Products" call Kevin Pautler at (202) 720-9168, office hours 7:00 a.m. to 4:00 p.m. ET.

January 2003 Highlights

Total cheese output (excluding cottage cheese) was 724 million pounds, 2.7 percent above January 2002 but 1.7 percent below December 2002.

American type cheese production totaled 319 million pounds, 1.3 percent above January 2002 and 1.0 percent above December 2002.

Butter production was 142 million pounds in January, 1.3 percent above January 2002 and 11.7 percent above December 2002.

Frozen dessert: (comparisons with January 2002)

Ice cream, Regular (hard) --- 67.2 million gallons, down 4.1 percent.

Ice cream, Lowfat (total) --- 24.3 million gallons, up 9.9 percent.

Ice cream, Nonfat (hard) --- 1.50 million gallons, down 27.7 percent.

Sherbet (hard) --- 4.07 million gallons, up 7.1 percent.

Frozen Yogurt (total) --- 5.67 million gallons, down 5.2 percent.

Nonfat dry milk for human food: (compared with January 2002) --- 134 million pounds, up 5.3 percent.

Dry whey products: (comparisons with January 2002)

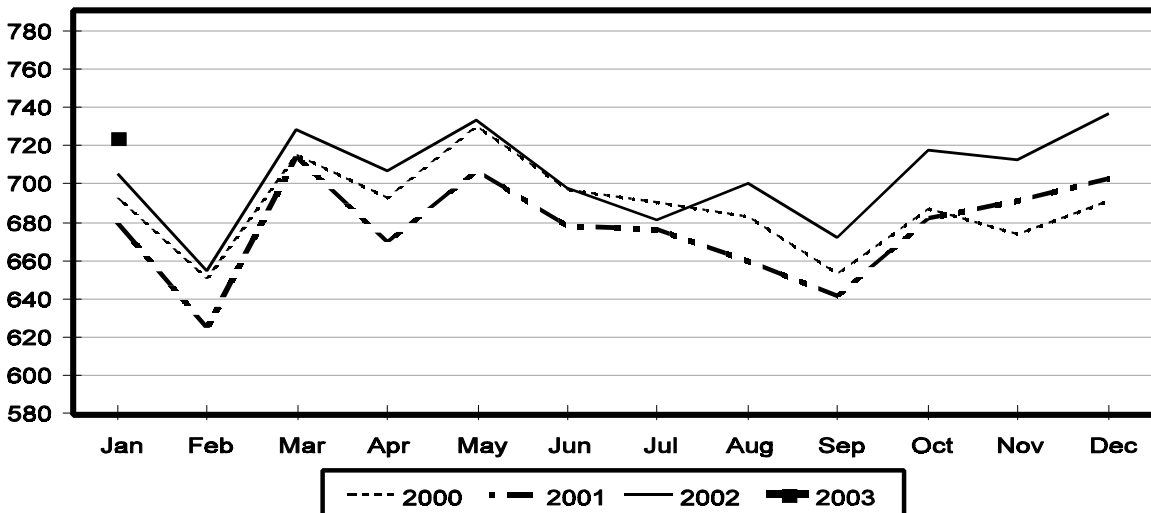
Dry whey, human --- 89.8 million pounds, up 6.2 percent.

Dry whey, animal --- 5.95 million pounds, up 5.6 percent.

Dry whey, total --- 95.8 million pounds, up 6.2 percent.

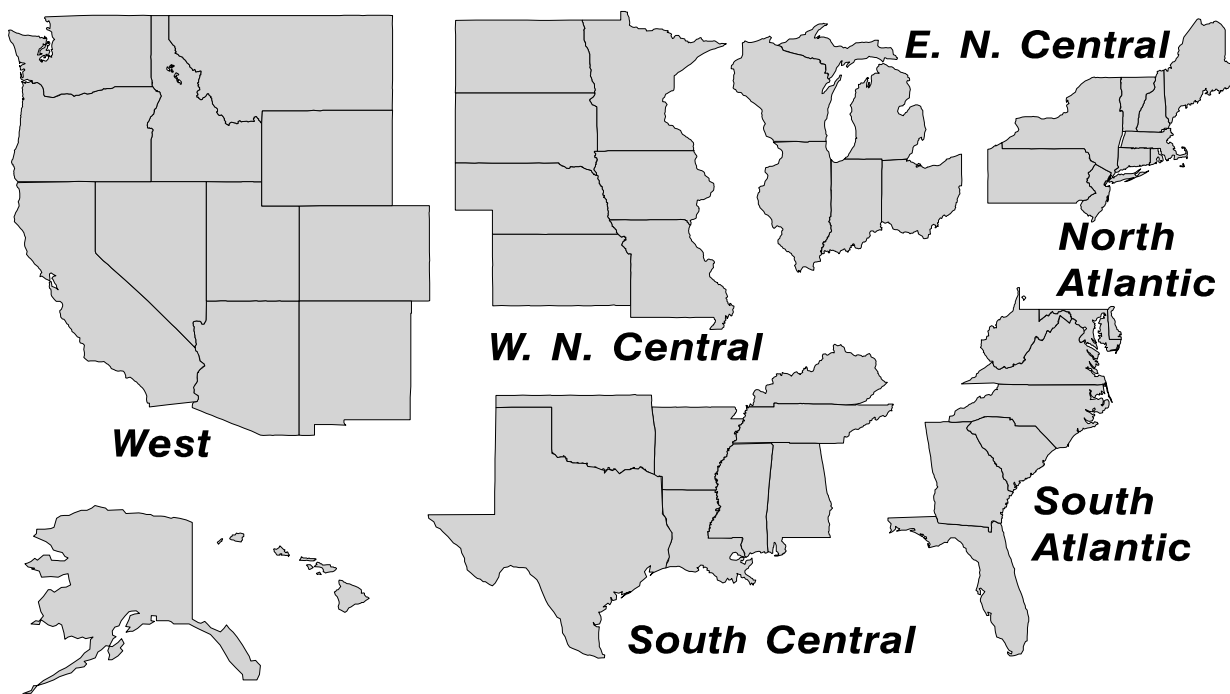
Total Cheese Production United States

Million Pounds



U. S. Geographic Regions Dairy Products

State totals are not published when fewer than 3 firms have reported or one firm comprises more than 60 percent of the State total. If we are not able to publish a region for confidentiality reasons, it will be combined with other regions when possible. For example, if North Atlantic can not be published, then it will be combined with South Atlantic to publish Atlantic. The West North Central and East North Central will be combined, if necessary, to form North Central. In the event that neither could be published, they may be combined with South Central to publish Central. Some tables will have only limited regions shown, therefore the regions may not add to the United States total.



**Dairy Products: Production by Product,
United States, January, 2002-2003**

Product	Jan 2002	Dec 2002 ¹	Jan 2003	Change From	
				Jan 2002	Dec 2002
	<i>1,000 Pounds</i>	<i>1,000 Pounds</i>	<i>1,000 Pounds</i>	<i>Percent</i>	<i>Percent</i>
Butter	140,687	127,496	142,446	1.3	11.7
Cheese					
American Types ²	315,166	315,989	319,186	1.3	1.0
Cheddar	246,156	238,354	247,713	0.6	3.9
Swiss	20,442	22,715	22,666	10.9	-0.2
Brick and Muenster	8,231	7,565	6,873	-16.5	-9.1
Cream and Neufchatel	44,777	56,342	49,024	9.5	-13.0
Hispanic	10,102	9,917	10,245	1.4	3.3
Mozzarella	231,799	244,968	238,287	2.8	-2.7
Other Italian Types	58,377	62,766	61,664	5.6	-1.8
Total Italian Types	290,176	307,734	299,951	3.4	-2.5
All Other Types	16,351	16,624	16,380	0.2	-1.5
Total	705,245	736,886	724,325	2.7	-1.7
Cottage Cheese, Curd ³	35,330	33,095	35,091	-0.7	6.0
Cottage Cheese, Cream ⁴	29,765	27,573	30,873	3.7	12.0
Cottage Cheese, Lowfat ⁵	29,609	27,555	29,791	0.6	8.1
Canned Evaporated and					
Condensed Whole Milk	31,524	36,607	41,663	32.2	13.8
Dry Whole Milk	3,845	3,878	3,625	-5.7	-6.5
Nonfat Dry Milk, Human	127,175	127,733	133,942	5.3	4.9
Dry Skim Milk, Animal	685	382	473	-30.9	23.8
Dry Buttermilk	5,561	5,000	6,973	25.4	39.5
Yogurt, Plain & Flavored	153,156	152,174	160,620	4.9	5.6
	<i>1,000 Gallons</i>	<i>1,000 Gallons</i>	<i>1,000 Gallons</i>	<i>Percent</i>	<i>Percent</i>
Frozen Products					
Ice Cream, Hard	70,004	58,320	67,156	-4.1	15.2
Ice Cream, Lowfat, Hard	8,085	6,703	8,081		20.6
Ice Cream, Lowfat, Soft	14,034	17,021	16,218	15.6	-4.7
Ice Cream, Lowfat, Total	22,119	23,724	24,299	9.9	2.4
Ice Cream, Nonfat, Hard	2,074	1,195	1,500	-27.7	25.5
Sherbet, Hard	3,796	3,387	4,065	7.1	20.0
Water and Juice Ices	4,327	3,228	4,519	4.4	40.0
Frozen Yogurt, Total	5,976	5,131	5,668	-5.2	10.5
Regular & Lowfat, Hard	1,791	1,382	1,589	-11.3	15.0
Nonfat, Hard	990	784	855	-13.6	9.1
Other Frozen Dairy					
Products	710	561	591	-16.8	5.3
Mix for Frozen Products					
Ice Cream Mix	38,007	33,853	42,591	12.1	25.8
Ice Cream, Lowfat, Mix	12,184	13,144	13,416	10.1	2.1
Ice Cream, Nonfat, Mix	1,225	739	1,103	-10.0	49.3
Sherbet Mix	2,735	2,359	2,789	2.0	18.2
Yogurt Mix	3,515	3,018	3,334	-5.1	10.5

¹ Revised.

² Includes Cheddar, Colby, Monterey, and Jack.

³ Mostly used for processing into cream or lowfat cottage cheese.

⁴ Fat content 4 percent or more.

⁵ Fat content less than 4 percent.

**Whey and Modified Whey Products: Production, Stocks,
and Prices, United States, January, 2002-2003**

Product	Jan 2002	Dec 2002 ¹	Jan 2003	Change From	
				Jan 2002	Dec 2002
Production					
	<i>1,000 Pounds</i>	<i>1,000 Pounds</i>	<i>1,000 Pounds</i>	<i>Percent</i>	<i>Percent</i>
Condensed Whey, Solids Content ²					
Sweet-Type, Human	6,681	7,311	10,244	53.3	40.1
Sweet-Type, Animal ³	1,269				
Dry Whey Products					
Dry Whey, Human	84,573	92,088	89,818	6.2	-2.5
Dry Whey, Animal	5,632	6,217	5,948	5.6	-4.3
Dry Whey, Total	90,205	98,305	95,766	6.2	-2.6
Reduced Lactose and Minerals					
Human Food	8,559	3,981	4,457	-47.9	12.0
Animal Feed	3,685	3,551	3,946	7.1	11.1
Lactose, Human and Animal	48,837	50,257	50,247	2.9	
Whey					
Solids in Wet Blends, Animal ³	2,989	2,844			
Protein Concentrate, Human	24,137	28,704	28,989	20.1	1.0
Protein Concentrate, Animal	3,878	3,264	3,169	-18.3	-2.9
Manufacturers' Stocks End-of-Month ⁴					
	<i>1,000 Pounds</i>	<i>1,000 Pounds</i>	<i>1,000 Pounds</i>	<i>Percent</i>	<i>Percent</i>
Dry Whey Products					
Dry Whey, Human	35,727	47,012	41,802	17.0	-11.1
Dry Whey, Animal	2,129	2,380	3,381	58.8	42.1
Reduced Lactose and Minerals					
Human and Animal ⁵	8,201	10,079	10,294	25.5	2.1
Lactose, Human and Animal	28,483	45,953	42,661	49.8	-7.2
Whey Protein Concentrate, Human	19,367	21,419	22,232	14.8	3.8
Whey Protein Concentrate, Animal	1,863	1,412	1,411	-24.3	-0.1
Manufacturers' Selling Price ⁶					
	<i>Cents per Pound</i>	<i>Cents per Pound</i>	<i>Cents per Pound</i>	<i>Cents Change</i>	<i>Cents Change</i>
Dry Whey, Animal	25.4	16.8	15.9	-9.5	-0.9

¹ Revised.

² Final marketable product only. Does not include quantity used or shipped to another plant for further processing into dry whey or modified whey products.

³ Not shown when fewer than three plants reported or individual plant operations could be disclosed

⁴ Stocks held by manufacturers at all points and in transit.

⁵ Reduced lactose and minerals stocks combined to avoid disclosure of individual operations.

⁶ Prices for bulk goods, f.o.b. plant. Average monthly prices reported by firms.

**Dairy Products: Production by Product and Month,
United States, 2002-2003 ¹**

Product and Month	By Month			Cumulative		
	2002	2003	Change From 2002	2002	2003	Change From 2002
	<i>1,000 Pounds</i>	<i>1,000 Pounds</i>	<i>Percent</i>	<i>1,000 Pounds</i>	<i>1,000 Pounds</i>	<i>Percent</i>
Total Cheese ³						
Jan	705,245	724,325	2.7	705,245	724,325	2.7
Feb	654,950			1,360,195		
Mar	727,574			2,087,769		
Apr	706,962			2,794,731		
May	733,204			3,527,935		
Jun	697,507			4,225,442		
Jul	680,801			4,906,243		
Aug	700,163			5,606,406		
Sep	671,962			6,278,368		
Oct	717,589			6,995,957		
Nov	712,888			7,708,845		
Dec	736,886			8,445,731		
American Cheese						
Jan	315,166	319,186	1.3	315,166	319,186	1.3
Feb	287,383			602,549		
Mar	318,242			920,791		
Apr	316,800			1,237,591		
May	326,180			1,563,771		
Jun	310,332			1,874,103		
Jul	301,248			2,175,351		
Aug	305,826			2,481,177		
Sep	285,724			2,766,901		
Oct	295,418			3,062,319		
Nov	291,765			3,354,084		
Dec	315,989			3,670,073		
Cheddar Cheese						
Jan	246,156	247,713	0.6	246,156	247,713	0.6
Feb	224,971			471,127		
Mar	249,156			720,283		
Apr	249,284			969,567		
May	256,090			1,225,657		
Jun	240,492			1,466,149		
Jul	228,334			1,694,483		
Aug	227,667			1,922,150		
Sep	212,747			2,134,897		
Oct	218,033			2,352,930		
Nov	218,024			2,570,954		
Dec	238,354			2,809,308		

See footnote(s) at end of table.

--continued

**Dairy Products: Production by Product and Month,
United States, 2002-2003 ¹ (continued)**

Product and Month	By Month			Cumulative		
	2002	2003	Change From 2002	2002	2003	Change From 2002
	<i>1,000 Pounds</i>	<i>1,000 Pounds</i>	<i>Percent</i>	<i>1,000 Pounds</i>	<i>1,000 Pounds</i>	<i>Percent</i>
Italian Cheese ³						
Jan	290,176	299,951	3.4	290,176	299,951	3.4
Feb	273,836			564,012		
Mar	301,373			865,385		
Apr	285,574			1,150,959		
May	299,574			1,450,533		
Jun	277,898			1,728,431		
Jul	273,538			2,001,969		
Aug	281,382			2,283,351		
Sep	274,086			2,557,437		
Oct	297,010			2,854,447		
Nov	294,761			3,149,208		
Dec	307,734			3,456,942		
Mozzarella ³						
Jan	231,799	238,287	2.8	231,799	238,287	2.8
Feb	221,288			453,087		
Mar	242,717			695,804		
Apr	228,145			923,949		
May	242,705			1,166,654		
Jun	226,453			1,393,107		
Jul	219,089			1,612,196		
Aug	225,620			1,837,816		
Sep	222,422			2,060,238		
Oct	234,071			2,294,309		
Nov	232,030			2,526,339		
Dec	244,968			2,771,307		
Other Italian						
Jan	58,377	61,664	5.6	58,377	61,664	5.6
Feb	52,548			110,925		
Mar	58,656			169,581		
Apr	57,429			227,010		
May	56,869			283,879		
Jun	51,445			335,324		
Jul	54,449			389,773		
Aug	55,762			445,535		
Sep	51,664			497,199		
Oct	62,939			560,138		
Nov	62,731			622,869		
Dec	62,766			685,635		

See footnote(s) at end of table.

--continued

**Dairy Products: Production by Product and Month,
United States, 2002-2003 ¹ (continued)**

Product and Month	By Month			Cumulative		
	2002	2003	Change From 2002	2002	2003	Change From 2002
	<i>1,000 Pounds</i>	<i>1,000 Pounds</i>	<i>Percent</i>	<i>1,000 Pounds</i>	<i>1,000 Pounds</i>	<i>Percent</i>
Butter						
Jan	140,687	142,446	1.3	140,687	142,446	1.3
Feb	125,352			266,039		
Mar	128,966			395,005		
Apr	132,406			527,411		
May	126,533			653,944		
Jun	96,905			750,849		
Jul	93,975			844,824		
Aug	88,512			933,336		
Sep	92,264			1,025,600		
Oct	102,084			1,127,684		
Nov	104,221			1,231,905		
Dec	127,496			1,359,401		
Nonfat Dry Milk, Human						
Jan	118,892	133,942	12.7	118,892	133,942	12.7
Feb	125,838			244,730		
Mar	147,761			392,491		
Apr	158,291			550,782		
May	158,062			708,844		
Jun	147,643			856,487		
Jul	123,733			980,220		
Aug	114,408			1,094,628		
Sep	93,763			1,188,391		
Oct	99,746			1,288,137		
Nov	96,075			1,384,212		
Dec	127,733			1,511,945		
Total Dry Whey ²						
Jan	90,205	95,766	6.2	90,205	95,766	6.2
Feb	85,878			176,083		
Mar	96,495			272,578		
Apr	93,981			366,559		
May	98,373			464,932		
Jun	93,814			558,746		
Jul	93,607			652,353		
Aug	93,862			746,215		
Sep	89,970			836,185		
Oct	93,165			929,350		
Nov	91,599			1,020,949		
Dec	98,305			1,119,254		

See footnote(s) at end of table.

--continued

**Dairy Products: Production by Product and Month,
United States, 2002-2003 ¹ (continued)**

Product and Month	By Month			Cumulative		
	2002	2003	Change From 2002	2002	2003	Change From 2002
	<i>1,000 Pounds</i>	<i>1,000 Pounds</i>	<i>Percent</i>	<i>1,000 Pounds</i>	<i>1,000 Pounds</i>	<i>Percent</i>
Cream Cottage Cheese						
Jan	29,765	30,873	3.7	29,765	30,873	3.7
Feb	28,788			58,553		
Mar	31,520			90,073		
Apr	30,502			120,575		
May	32,554			153,129		
Jun	30,388			183,517		
Jul	32,100			215,617		
Aug	33,145			248,762		
Sep	31,651			280,413		
Oct	31,595			312,008		
Nov	27,270			339,278		
Dec	27,573			366,851		
Lowfat Cottage Cheese						
Jan	29,609	29,791	0.6	29,609	29,791	0.6
Feb	30,006			59,615		
Mar	32,509			92,124		
Apr	30,524			122,648		
May	34,477			157,125		
Jun	29,559			186,684		
Jul	34,416			221,100		
Aug	34,922			256,022		
Sep	31,669			287,691		
Oct	32,633			320,324		
Nov	27,202			347,526		
Dec	27,555			375,081		
	<i>1,000 Gallons</i>	<i>1,000 Gallons</i>	<i>Percent</i>	<i>1,000 Gallons</i>	<i>1,000 Gallons</i>	<i>Percent</i>
Ice Cream, Hard						
Jan	70,004	67,156	-4.1	70,004	67,156	-4.1
Feb	71,034			141,038		
Mar	76,680			217,718		
Apr	80,214			297,932		
May	76,953			374,885		
Jun	81,127			456,012		
Jul	82,404			538,416		
Aug	78,039			616,455		
Sep	70,281			686,736		
Oct	70,472			757,208		
Nov	59,152			816,360		
Dec	58,320			874,680		

See footnote(s) at end of table.

--continued

**Dairy Products: Production by Product and Month,
United States, 2002-2003 ¹ (continued)**

Product and Month	By Month			Cumulative		
	2002	2003	Change From 2002	2002	2003	Change From 2002
	<i>1,000 Gallons</i>	<i>1,000 Gallons</i>	<i>Percent</i>	<i>1,000 Gallons</i>	<i>1,000 Gallons</i>	<i>Percent</i>
Ice Cream, Lowfat						
Jan	22,119	24,299	9.9	22,119	24,299	9.9
Feb	24,976			47,095		
Mar	31,620			78,715		
Apr	36,060			114,775		
May	38,960			153,735		
Jun	39,773			193,508		
Jul	39,421			232,929		
Aug	36,811			269,740		
Sep	31,353			301,093		
Oct	28,820			329,913		
Nov	21,906			351,819		
Dec	23,724			375,543		
Ice Cream, NF, Hard						
Jan	2,074	1,500	-27.7	2,074	1,500	-27.7
Feb	1,610			3,684		
Mar	2,034			5,718		
Apr	1,561			7,279		
May	1,543			8,822		
Jun	1,415			10,237		
Jul	1,500			11,737		
Aug	1,462			13,199		
Sep	1,406			14,605		
Oct	1,574			16,179		
Nov	1,479			17,658		
Dec	1,195			18,853		
Sherbet, Hard						
Jan	3,796	4,065	7.1	3,796	4,065	7.1
Feb	4,050			7,846		
Mar	4,786			12,632		
Apr	5,127			17,759		
May	5,417			23,176		
Jun	5,475			28,651		
Jul	5,531			34,182		
Aug	5,094			39,276		
Sep	4,135			43,411		
Oct	4,274			47,685		
Nov	3,062			50,747		
Dec	3,387			54,134		

See footnote(s) at end of table.

--continued

**Dairy Products: Production by Product and Month,
United States, 2002-2003 ¹ (continued)**

Product and Month	By Month			Cumulative		
	2002	2003	Change From 2002	2002	2003	Change From 2002
	<i>1,000 Gallons</i>	<i>1,000 Gallons</i>	<i>Percent</i>	<i>1,000 Gallons</i>	<i>1,000 Gallons</i>	<i>Percent</i>
Frozen Yogurt						
Jan	5,976	5,668	-5.2	5,976	5,668	-5.2
Feb	6,348			12,324		
Mar	6,900			19,224		
Apr	6,878			26,102		
May	7,443			33,545		
Jun	6,985			40,530		
Jul	7,536			48,066		
Aug	7,031			55,097		
Sep	6,715			61,812		
Oct	6,346			68,158		
Nov	5,530			73,688		
Dec	5,131			78,819		

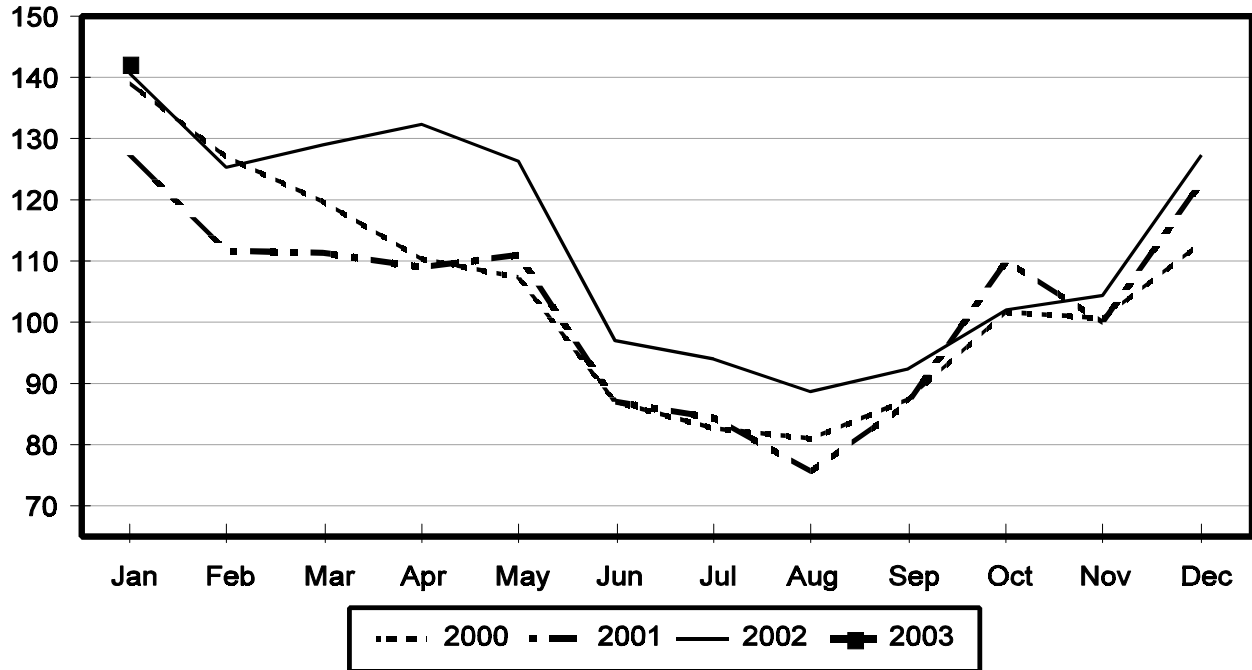
¹ December 2002 data revised.

² Excludes all modified dry whey products.

³ Preliminary revisions for Mozzarella cheese for January through September 2002. Revisions to Mozzarella cheese are reflected in Italian cheese and Total cheese numbers. Annual revisions will be published in April 2003.

Total Butter Production United States

Million Pounds



**Total Cheese, Excluding Cottage Cheese: Production by
State and United States, January 2002-2003**

State	Jan 2002	Dec ¹ 2002	Jan 2003	Change From	
				Jan 2002	Dec 2002
	<i>1,000 Pounds</i>	<i>1,000 Pounds</i>	<i>1,000 Pounds</i>	<i>Percent</i>	<i>Percent</i>
CA	142,036	146,370	154,248	8.6	5.4
ID	48,123	51,370	55,098	14.5	7.3
IL	8,180	8,204	8,478	3.6	3.3
IA	22,478	22,089	23,229	3.3	5.2
MA	82	81	60	-26.8	-25.9
MN	53,564	53,182	53,635	0.1	0.9
MO	7,617	7,603	5,906	-22.5	-22.3
NY	59,016	63,281	55,971	-5.2	-11.6
OH	14,004	14,429	14,634	4.5	1.4
PA	30,867	33,184	30,348	-1.7	-8.5
SD	13,316	13,434	13,085	-1.7	-2.6
UT	4,665	6,241	5,531	18.6	-11.4
WA	12,538	13,321			
WI	179,957	185,420	178,795	-0.6	-3.6
Oth Sts ²	108,802	118,677	125,307	15.2	5.6
US	705,245	736,886	724,325	2.7	-1.7
N Atlantic	106,318	113,177	103,009	-3.1	-9.0
S Atlantic	3,661	2,513	3,556	-2.9	41.5
E N Central	216,634	224,186	218,309	0.8	-2.6
W N Central	106,960	105,785	104,322	-2.5	-1.4
S Central	4,227	7,724	6,828	61.5	-11.6
West	267,445	283,501	288,301	7.8	1.7

¹ Revised.

² States not shown when fewer than 3 plants reported or individual plant operations could be disclosed. Percent change shown only when comparable States are included in the calculation.

American Cheese: Production by State and United States, January 2002-2003

State	Jan 2002	Dec ¹ 2002	Jan 2003	Change From	
				Jan 2002	Dec 2002
	<i>1,000 Pounds</i>	<i>1,000 Pounds</i>	<i>1,000 Pounds</i>	<i>Percent</i>	<i>Percent</i>
CA	64,319	68,420	70,693	9.9	3.3
ID	40,170	37,279	39,006	-2.9	4.6
IA	11,898	12,223	12,526	5.3	2.5
MN	51,855	51,076	52,016	0.3	1.8
NY	9,230	7,549	9,031	-2.2	19.6
OH	3,373	2,820	3,332	-1.2	18.2
OR	7,391	8,087	8,167	10.5	1.0
SD	6,549	6,639	6,829	4.3	2.9
WA	12,378	13,299			
WI	74,400	74,080	71,500	-3.9	-3.5
Oth Sts ²	33,603	34,517	46,086	37.1	33.5
US	315,166	315,989	319,186	1.3	1.0
Atlantic	15,868	13,325	15,387	-3.0	15.5
E N Central	79,361	78,341	76,294	-3.9	-2.6
W N Central	71,934	71,473	73,021	1.5	2.2
S Central	4,102	4,982	4,177	1.8	-16.2
West	143,901	147,868	150,307	4.5	1.6

¹ Revised.

² States not shown when fewer than 3 plants reported or individual plant operations could be disclosed. Percent change shown only when comparable States are included in the calculation.

Cheddar Cheese: Production by State and United States, January 2002-2003

State	Jan 2002	Dec ¹ 2002	Jan 2003	Change From	
				Jan 2002	Dec 2002
	<i>1,000 Pounds</i>	<i>1,000 Pounds</i>	<i>1,000 Pounds</i>	<i>Percent</i>	<i>Percent</i>
CA	48,732	48,856	52,010	6.7	6.5
ID	18,598	14,784	17,557	-5.6	18.8
MN	49,525	46,451	48,923	-1.2	5.3
NY	9,137	7,463	8,935	-2.2	19.7
SD	4,725	4,478	5,252	11.2	17.3
WA	10,129	10,918			
WI	59,100	59,180	57,700	-2.4	-2.5
Oth Sts ²	46,210	46,224	57,336	24.1	24.0
US	246,156	238,354	247,713	0.6	3.9
Atlantic	15,333	12,901	14,899	-2.8	15.5
E N Cen	61,693	61,056	60,412	-2.1	-1.1
W N Cen	62,374	58,822	62,482	0.2	6.2
S Cen	4,102	4,977	4,177	1.8	-16.1
West	102,654	100,598	105,743	3.0	5.1

¹ Revised.

² States not shown when fewer than 3 plants reported or individual plant operations could be disclosed. Percent change shown only when comparable States are included in the calculation.

Mozzarella Cheese: Production by State and United States, January 2002-2003

State	Jan 2002	Dec ¹ 2002	Jan 2003	Change From	
				Jan 2002	Dec 2002
	<i>1,000 Pounds</i>	<i>1,000 Pounds</i>	<i>1,000 Pounds</i>	<i>Percent</i>	<i>Percent</i>
CA	58,628	59,833	63,227	7.8	5.7
NY	17,813	17,570	18,187	2.1	3.5
WI	59,330	62,500	58,800	-0.9	-5.9
Oth Sts ²	96,028	105,065	98,073	2.1	-6.7
US	231,799	244,968	238,287	2.8	-2.7
Atlantic ³	44,442	44,400	44,042	-0.9	-0.8
E N Central	72,366	77,130	73,679	1.8	-4.5
West	91,640	106,981	105,583	15.2	-1.3

¹ Revised.

² States not shown when fewer than 3 plants reported or individual plant operations could be disclosed. Percent change shown only when comparable States are included in the calculation.

³ Region totals may not add to U.S. when compiled regions could not be disclosed.

Butter: Production by State and United States, January 2002-2003

State	Jan 2002	Dec ¹ 2002	Jan 2003	Change From	
				Jan 2002	Dec 2002
	<i>1,000 Pounds</i>	<i>1,000 Pounds</i>	<i>1,000 Pounds</i>	<i>Percent</i>	<i>Percent</i>
CA	35,468	35,838	39,525	11.4	10.3
NY	2,147	2,664	3,126	45.6	17.3
PA	7,596	6,965	4,403	-42.0	-36.8
WA	9,331	8,967			
WI	40,132	32,460	38,000	-5.3	17.1
Oth Sts ²	46,013	40,602	57,392	24.7	41.4
US	140,687	127,496	142,446	1.3	11.7
N Atlantic ³	13,863	13,497	11,869	-14.4	-12.1
E N Central	45,183	37,528	42,796	-5.3	14.0
W N Central	14,196	10,794	13,822	-2.6	28.1
West	50,011	50,625	56,362	12.7	11.3

¹ Revised.

² States not shown when fewer than 3 plants reported or individual plant operations could be disclosed. Percent change shown only when comparable States are included in the calculation.

³ Region totals may not add to U.S. when compiled regions could not be disclosed.

**Nonfat Dry Milk, Human: Production by State
and United States, January 2002-2003**

State	Jan 2002	Dec ¹ 2002	Jan 2003	Change From	
				Jan 2002	Dec 2002
	<i>1,000 Pounds</i>	<i>1,000 Pounds</i>	<i>1,000 Pounds</i>	<i>Percent</i>	<i>Percent</i>
CA	55,266	61,373	61,730	11.7	0.6
ID	8,344	5,296	6,333	-24.1	19.6
WA	10,215	15,700			
Oth Sts ²	53,350	45,364	65,879	23.5	45.2
US	127,175	127,733	133,942	5.3	4.9
Atlantic	17,228	12,947	14,875	-13.7	14.9
E N Central	4,614	6,391	4,346	-5.8	-32.0
W N Central	6,703	7,282	7,592	13.3	4.3
S Central	6,645	6,183	5,971	-10.1	-3.4
West	91,985	94,930	101,158	10.0	6.6

¹ Revised.

² States not shown when fewer than 3 plants reported or individual plant operations could be disclosed. Percent change shown only when comparable States are included in the calculation.

**Dry Whey, Human: Production by State
and United States, January 2002-2003**

State	Jan 2002	Dec ¹ 2002	Jan 2003	Change From	
				Jan 2002	Dec 2002
	<i>1,000 Pounds</i>	<i>1,000 Pounds</i>	<i>1,000 Pounds</i>	<i>Percent</i>	<i>Percent</i>
CA	12,100	13,229	12,688	4.9	-4.1
MN	6,361	7,404	6,864	7.9	-7.3
NY	10,472	8,892	10,157	-3.0	14.2
PA	8,391	10,299	9,890	17.9	-4.0
WA	6,124	8,121			
WI	24,991	27,962	25,300	1.2	-9.5
Oth Sts ²	16,134	16,181	24,919	54.5	54.0
US	84,573	92,088	89,818	6.2	-2.5
Atlantic	18,863	19,191	20,047	6.3	4.5
Central	43,708	47,068	44,575	2.0	-5.3
West	22,002	25,829	25,196	14.5	-2.5

¹ Revised.

² States not shown when fewer than 3 plants reported or individual plant operations could be disclosed. Percent change shown only when comparable States are included in the calculation.

Ice Cream, Hard: Production by State and United States, January 2002-2003

State	Jan 2002	Dec ¹ 2002	Jan 2003	Change From	
				Jan 2002	Dec 2002
	<i>1,000 Gallons</i>	<i>1,000 Gallons</i>	<i>1,000 Gallons</i>	<i>Percent</i>	<i>Percent</i>
CA	8,171	10,145	7,285	-10.8	-28.2
FL	1,900	1,800	1,700	-10.5	-5.6
IL	2,071	2,272	2,581	24.6	13.6
IN	7,031	5,559	7,145	1.6	28.5
MD	1,476	589	1,476		150.6
MA	7,612	3,612	5,484	-28.0	51.8
MI	1,614	1,560	1,630	1.0	4.5
MN	2,633	2,453	2,634		7.4
NH	6	6	5	-16.7	-16.7
NY	2,100	1,900	2,200	4.8	15.8
NC	1,424	981	1,575	10.6	60.6
OH	2,687	2,606	2,515	-6.4	-3.5
OR	790	670	760	-3.8	13.4
PA	3,879	2,997	3,631	-6.4	21.2
SD	3	3	3		
TN	1,331	1,104	1,372	3.1	24.3
TX	4,153	3,705	3,878	-6.6	4.7
UT	1,323	1,095	1,426	7.8	30.2
WA	1,375	812	1,287	-6.4	58.5
Oth Sts ²	18,425	14,451	18,569	0.8	28.5
US	70,004	58,320	67,156	-4.1	15.2
N Atlantic	16,463	10,036	13,761	-16.4	37.1
S Atlantic	5,931	4,806	6,366	7.3	32.5
E N Central	14,003	12,544	14,716	5.1	17.3
W N Central	11,442	8,986	10,567	-7.6	17.6
S Central	8,066	7,450	8,601	6.6	15.4
West	14,099	14,498	13,145	-6.8	-9.3

¹ Revised.

² States not shown when fewer than 3 plants reported or individual plant operations could be disclosed. Percent change shown only when comparable States are included in the calculation.

**Canned Milk and Dry Milk Products: Manufacturers' Shipments,
Stocks, and Selling Prices, January, 2002-2003**

Product	Jan 2002	Dec 2002 ¹	Jan 2003	Change From	
				Jan 2002	Dec 2002
	Manufacturers' Shipments ²				
	<i>1,000 Pounds</i>	<i>1,000 Pounds</i>	<i>1,000 Pounds</i>	<i>Percent</i>	<i>Percent</i>
Nonfat Dry Milk, Human	156,599	119,590	140,452	-10.3	17.4
	Manufacturers' Stocks End-of-Month ³				
	<i>1,000 Pounds</i>	<i>1,000 Pounds</i>	<i>1,000 Pounds</i>	<i>Percent</i>	<i>Percent</i>
Canned Evaporated and Condensed Whole Milk	42,080	53,871	48,955	16.3	-9.1
Nonfat Dry Milk, Human	120,042	101,128	109,811	-8.5	8.6
Dry Buttermilk, Total	8,704	8,231	10,210	17.3	24.0

¹ Revised.

² For dry products, shipments of bulk goods only.

³ Stocks held by manufacturers at all points and in transit.

Procedures and Reliability: Estimates included in this report are based on data provided each month by manufacturers of these products. In 32 States, the State Departments of Agriculture assist in collection of data, which eliminates duplicate reporting and reduces respondent burden. Data are collected by mail, personal and telephone interviews following the close of each month. There were 1,165 manufacturers that made one or more products in 2001. Each month, reports are generally received from all dairy plants in States with small numbers of plants. In States with large numbers of plants, survey procedures are designed to obtain monthly reports from all large plants and from a sample of small plants. Monthly estimates are based upon returns from about 70 percent of the plants which account for 70 to 90 percent of the total production of major dairy products.

Revision Policy: Monthly estimates are subject to revision the month following the preliminary estimates. Annual estimates are published in the "**Dairy Products**" report published each April which includes any revisions made to current and previous year. In preparing the annual report, an attempt is made to get information from all plants.

The next "Dairy Products" report will be released at 3 p.m. ET on April 4, 2003.

The United States Department of Agriculture (USDA) prohibits discrimination in all its programs on the basis of race, color, national origin, gender, religion, age, disability, political beliefs, sexual orientation, and marital or family status. (Not all prohibited bases apply to all programs.) Persons with disabilities who require alternative means for communication of program information (braille, large print, audiotape, etc.) should contact the USDA's TARGET Center at 202-720-2600 (voice and TDD).

To file a complaint of discrimination, write USDA, Director, Office of Civil Rights, Room 326-W, Whitten Building, 1400 Independence Avenue, SW, Washington, D.C., 20250-9410, or call 202-720-5964 (voice or TDD). USDA is an equal opportunity provider and employer.

ACCESS TO REPORTS!!

For your convenience, there are several ways to obtain NASS reports, data products, and services:

INTERNET ACCESS

All NASS reports are available free of charge on the worldwide Internet. For access, connect to the Internet and go to the NASS Home Page at: <http://www.usda.gov/nass/>. Select "Today's Reports" or Publications and then Reports Calendar or Publications and then Search, by Title or Subject.

E-MAIL SUBSCRIPTION

All NASS reports are available by subscription free of charge direct to your e-mail address. Starting with the NASS Home Page at <http://www.usda.gov/nass/>, click on **Publications**, then click on the **Subscribe by E-mail** button which takes you to the page describing e-mail delivery of reports. Finally, click on **Go to the Subscription Page** and follow the instructions.

AUTOFAX ACCESS

NASSFax service is available for some reports from your fax machine. Please call 202-720-2000, using the handset attached to your fax. Respond to the voice prompts. Document 0411 is a list of available reports.

PRINTED REPORTS OR DATA PRODUCTS

CALL OUR TOLL-FREE ORDER DESK: 800-999-6779 (U.S. and Canada)
Other areas, please call 703-605-6220 FAX: 703-605-6900
(Visa, MasterCard, check, or money order acceptable for payment.)

ASSISTANCE

For **assistance** with general agricultural statistics or further information about NASS or its products or services, contact the **Agricultural Statistics Hotline** at **800-727-9540**, 7:30 a.m. to 4:00 p.m. ET, or e-mail: nass@nass.usda.gov.
