

Released April 4, 2003, by the National Agricultural Statistics Service (NASS), Agricultural Statistics Board, U.S. Department of Agriculture. For information on "Dairy Products" call Kevin Pautler at (202) 720-9168, office hours 7:00 a.m. to 4:00 p.m. ET.

## February 2003 Highlights

**Total cheese** output (excluding cottage cheese) was 655 million pounds, slightly below February 2002 and 8.8 percent below January 2003.

**American type cheese** production totaled 285 million pounds, 0.9 percent below February 2002 and 10.8 percent below January 2003.

**Butter** production was 128 million pounds in February, 2.5 percent above February 2002 but 9.2 percent below January 2003.

**Frozen dessert:** (comparisons with February 2002)

Ice cream, Regular (hard) --- 70.6 million gallons, down 0.6 percent.

Ice cream, Lowfat (total) --- 25.4 million gallons, up 1.7 percent.

Ice cream, Nonfat (hard) --- 1.71 million gallons, up 6.0 percent.

Sherbet (hard) --- 4.43 million gallons, up 9.3 percent.

Frozen Yogurt (total) --- 6.15 million gallons, down 3.1 percent.

**Nonfat dry milk for human food:** (compared with February 2002) --- 133 million pounds, up 5.3 percent.

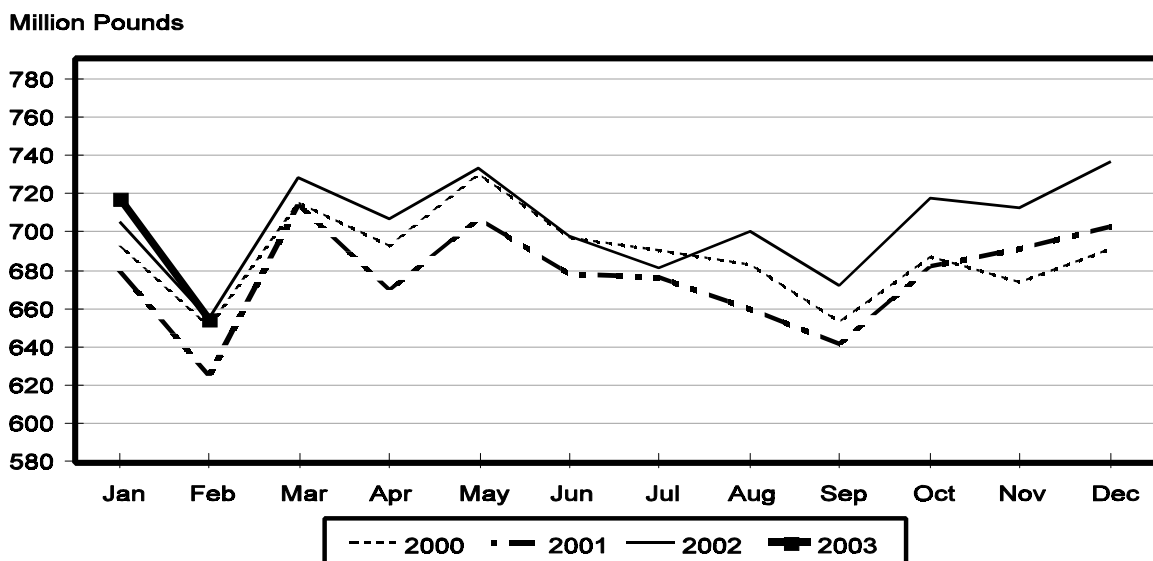
**Dry whey products:** (comparisons with February 2002)

Dry whey, human --- 83.4 million pounds, up 3.9 percent.

Dry whey, animal --- 4.62 million pounds, down 18.1 percent.

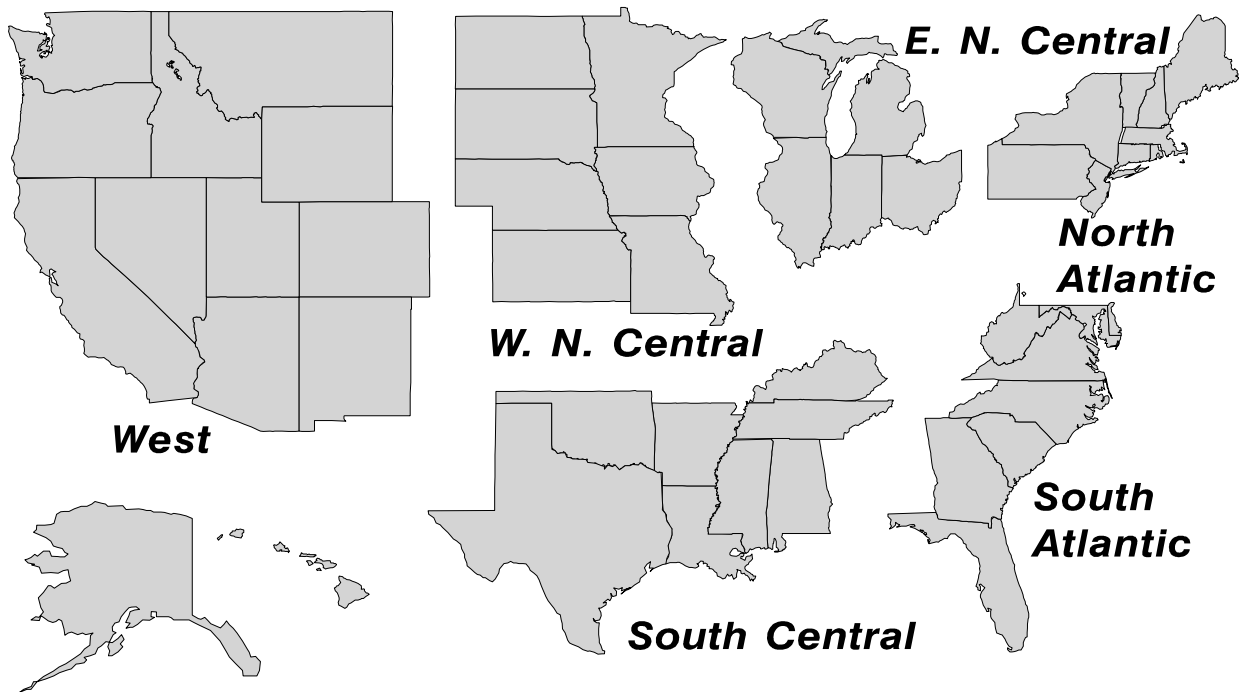
Dry whey, total --- 88.0 million pounds, up 2.5 percent.

## Total Cheese Production United States



## U. S. Geographic Regions Dairy Products

State totals are not published when fewer than 3 firms have reported or one firm comprises more than 60 percent of the State total. If we are not able to publish a region for confidentiality reasons, it will be combined with other regions when possible. For example, if North Atlantic can not be published, then it will be combined with South Atlantic to publish Atlantic. The West North Central and East North Central will be combined, if necessary, to form North Central. In the event that neither could be published, they may be combined with South Central to publish Central. Some tables will have only limited regions shown, therefore the regions may not add to the United States total.



**Dairy Products: Production by Product,  
United States, February, 2002-2003**

Product	Feb 2002	Jan 2003 <sup>1</sup>	Feb 2003	Change From	
				Feb 2002	Jan 2003
	<i>1,000 Pounds</i>	<i>1,000 Pounds</i>	<i>1,000 Pounds</i>	<i>Percent</i>	<i>Percent</i>
Butter	125,352	141,440	128,465	2.5	-9.2
Cheese					
American Types <sup>2</sup>	287,383	319,517	284,887	-0.9	-10.8
Cheddar	224,971	247,786	219,416	-2.5	-11.4
Swiss	18,838	22,758	20,473	8.7	-10.0
Brick and Muenster	6,313	6,922	6,532	3.5	-5.6
Cream and Neufchatel	44,016	48,276	45,986	4.5	-4.7
Hispanic	8,884	10,245	9,417	6.0	-8.1
Mozzarella	221,288	232,355	218,216	-1.4	-6.1
Other Italian Types	52,548	60,990	54,527	3.8	-10.6
Total Italian Types	273,836	293,345	272,743	-0.4	-7.0
All Other Types	15,680	16,700	14,602	-6.9	-12.6
Total	654,950	717,763	654,640		-8.8
Cottage Cheese, Curd <sup>3</sup>	35,178	35,669	33,534	-4.7	-6.0
Cottage Cheese, Cream <sup>4</sup>	28,788	31,386	29,242	1.6	-6.8
Cottage Cheese, Lowfat <sup>5</sup>	30,006	30,397	29,128	-2.9	-4.2
Canned Evaporated and					
Condensed Whole Milk	29,417	39,449	35,666	21.2	-9.6
Dry Whole Milk	4,219	2,728	2,630	-37.7	-3.6
Nonfat Dry Milk, Human	125,838	133,758	132,552	5.3	-0.9
Dry Skim Milk, Animal	852	474	461	-45.9	-2.7
Dry Buttermilk	4,888	7,009	6,182	26.5	-11.8
Sour Cream		51,558	43,850		-15.0
Yogurt, Plain & Flavored	162,903	169,417	174,981	7.4	3.3
	<i>1,000 Gallons</i>	<i>1,000 Gallons</i>	<i>1,000 Gallons</i>	<i>Percent</i>	<i>Percent</i>
Frozen Products					
Ice Cream, Hard	71,034	67,337	70,625	-0.6	4.9
Ice Cream, Lowfat, Hard	6,404	8,174	7,318	14.3	-10.5
Ice Cream, Lowfat, Soft	18,572	17,100	18,088	-2.6	5.8
Ice Cream, Lowfat, Total	24,976	25,274	25,406	1.7	0.5
Ice Cream, Nonfat, Hard	1,610	1,584	1,707	6.0	7.8
Sherbet, Hard	4,050	4,056	4,427	9.3	9.1
Water and Juice Ices	5,033	4,519	5,133	2.0	13.6
Frozen Yogurt, Total	6,348	5,719	6,149	-3.1	7.5
Regular & Lowfat, Hard	2,012	1,642	1,861	-7.5	13.3
Nonfat, Hard	968	832	993	2.6	19.4
Other Frozen Dairy Products	790	588	696	-11.9	18.4
Mix for Frozen Products					
Ice Cream Mix	40,595	39,574	40,509	-0.2	2.4
Ice Cream, Lowfat, Mix	13,863	13,963	14,071	1.5	0.8
Ice Cream, Nonfat, Mix	1,059	1,144	1,153	8.9	0.8
Sherbet Mix	2,848	2,777	3,117	9.4	12.2
Yogurt Mix	3,734	3,364	3,617	-3.1	7.5

<sup>1</sup> Revised.

<sup>2</sup> Includes Cheddar, Colby, Monterey, and Jack.

<sup>3</sup> Mostly used for processing into cream or lowfat cottage cheese.

<sup>4</sup> Fat content 4 percent or more.

<sup>5</sup> Fat content less than 4 percent.

**Whey and Modified Whey Products: Production, Stocks,  
and Prices, United States, February, 2002-2003**

Product	Feb 2002	Jan 2003 <sup>1</sup>	Feb 2003	Change From	
				Feb 2002	Jan 2003
<b>Production</b>					
	<i>1,000 Pounds</i>	<i>1,000 Pounds</i>	<i>1,000 Pounds</i>	<i>Percent</i>	<i>Percent</i>
Condensed Whey, Solids Content <sup>2</sup>					
Sweet-Type, Human	6,487	10,244	8,919	37.5	-12.9
Sweet-Type, Animal <sup>3</sup>	980				
Dry Whey Products					
Dry Whey, Human	80,242	91,736	83,367	3.9	-9.1
Dry Whey, Animal	5,636	5,928	4,616	-18.1	-22.1
Dry Whey, Total	85,878	97,664	87,983	2.5	-9.9
Reduced Lactose and Minerals					
Human Food	7,666	4,457	4,104	-46.5	-7.9
Animal Feed	3,483	3,876	3,249	-6.7	-16.2
Lactose, Human and Animal	43,985	50,464	47,591	8.2	-5.7
Whey					
Solids in Wet Blends, Animal <sup>3</sup>	3,988				
Protein Concentrate, Human	25,785	28,504	27,610	7.1	-3.1
Protein Concentrate, Animal	3,225	3,169	3,031	-6.0	-4.4
<b>Manufacturers' Stocks End-of-Month <sup>4</sup></b>					
	<i>1,000 Pounds</i>	<i>1,000 Pounds</i>	<i>1,000 Pounds</i>	<i>Percent</i>	<i>Percent</i>
Dry Whey Products					
Dry Whey, Human	37,151	39,519	35,862	-3.5	-9.3
Dry Whey, Animal	1,427	3,356	1,767	23.8	-47.3
Reduced Lactose and Minerals					
Human and Animal <sup>5</sup>	8,078	10,594	11,782	45.9	11.2
Lactose, Human and Animal	27,856	42,676	38,088	36.7	-10.8
Whey Protein Concentrate, Human	21,071	22,240	21,920	4.0	-1.4
Whey Protein Concentrate, Animal	1,648	1,411	1,790	8.6	26.9
<b>Manufacturers' Selling Price <sup>6</sup></b>					
	<i>Cents per Pound</i>	<i>Cents per Pound</i>	<i>Cents per Pound</i>	<i>Cents Change</i>	<i>Cents Change</i>
Dry Whey, Animal	20.8	16.0	15.1	-5.7	-0.9

<sup>1</sup> Revised.

<sup>2</sup> Final marketable product only. Does not include quantity used or shipped to another plant for further processing into dry whey or modified whey products.

<sup>3</sup> Not shown when fewer than three plants reported or individual plant operations could be disclosed.

<sup>4</sup> Stocks held by manufacturers at all points and in transit.

<sup>5</sup> Reduced lactose and minerals stocks combined to avoid disclosure of individual operations.

<sup>6</sup> Prices for bulk goods, f.o.b. plant. Average monthly prices reported by firms.

**Dairy Products: Production by Product and Month,  
United States, 2002-2003 <sup>1</sup>**

Product and Month	By Month			Cumulative		
	2002	2003	Change From 2002	2002	2003	Change From 2002
	<i>1,000 Pounds</i>	<i>1,000 Pounds</i>	<i>Percent</i>	<i>1,000 Pounds</i>	<i>1,000 Pounds</i>	<i>Percent</i>
<b>Total Cheese <sup>3</sup></b>						
Jan	705,245	717,763	1.8	705,245	717,763	1.8
Feb	654,950	654,640		1,360,195	1,372,403	0.9
Mar	727,574			2,087,769		
Apr	706,962			2,794,731		
May	733,204			3,527,935		
Jun	697,507			4,225,442		
Jul	680,801			4,906,243		
Aug	700,163			5,606,406		
Sep	671,962			6,278,368		
Oct	717,589			6,995,957		
Nov	712,888			7,708,845		
Dec	736,886			8,445,731		
<b>American Cheese</b>						
Jan	315,166	319,517	1.4	315,166	319,517	1.4
Feb	287,383	284,887	-0.9	602,549	604,404	0.3
Mar	318,242			920,791		
Apr	316,800			1,237,591		
May	326,180			1,563,771		
Jun	310,332			1,874,103		
Jul	301,248			2,175,351		
Aug	305,826			2,481,177		
Sep	285,724			2,766,901		
Oct	295,418			3,062,319		
Nov	291,765			3,354,084		
Dec	315,989			3,670,073		
<b>Cheddar Cheese</b>						
Jan	246,156	247,786	0.7	246,156	247,786	0.7
Feb	224,971	219,416	-2.5	471,127	467,202	-0.8
Mar	249,156			720,283		
Apr	249,284			969,567		
May	256,090			1,225,657		
Jun	240,492			1,466,149		
Jul	228,334			1,694,483		
Aug	227,667			1,922,150		
Sep	212,747			2,134,897		
Oct	218,033			2,352,930		
Nov	218,024			2,570,954		
Dec	238,354			2,809,308		

See footnote(s) at end of table.

--continued

**Dairy Products: Production by Product and Month,  
United States, 2002-2003 <sup>1</sup> (continued)**

Product and Month	By Month			Cumulative		
	2002	2003	Change From 2002	2002	2003	Change From 2002
	<i>1,000 Pounds</i>	<i>1,000 Pounds</i>	<i>Percent</i>	<i>1,000 Pounds</i>	<i>1,000 Pounds</i>	<i>Percent</i>
Italian Cheese <sup>3</sup>						
Jan	290,176	293,345	1.1	290,176	293,345	1.1
Feb	273,836	272,743	-0.4	564,012	566,088	0.4
Mar	301,373			865,385		
Apr	285,574			1,150,959		
May	299,574			1,450,533		
Jun	277,898			1,728,431		
Jul	273,538			2,001,969		
Aug	281,382			2,283,351		
Sep	274,086			2,557,437		
Oct	297,010			2,854,447		
Nov	294,761			3,149,208		
Dec	307,734			3,456,942		
Mozzarella <sup>3</sup>						
Jan	231,799	232,355	0.2	231,799	232,355	0.2
Feb	221,288	218,216	-1.4	453,087	450,571	-0.6
Mar	242,717			695,804		
Apr	228,145			923,949		
May	242,705			1,166,654		
Jun	226,453			1,393,107		
Jul	219,089			1,612,196		
Aug	225,620			1,837,816		
Sep	222,422			2,060,238		
Oct	234,071			2,294,309		
Nov	232,030			2,526,339		
Dec	244,968			2,771,307		
Other Italian						
Jan	58,377	60,990	4.5	58,377	60,990	4.5
Feb	52,548	54,527	3.8	110,925	115,517	4.1
Mar	58,656			169,581		
Apr	57,429			227,010		
May	56,869			283,879		
Jun	51,445			335,324		
Jul	54,449			389,773		
Aug	55,762			445,535		
Sep	51,664			497,199		
Oct	62,939			560,138		
Nov	62,731			622,869		
Dec	62,766			685,635		

See footnote(s) at end of table.

--continued

**Dairy Products: Production by Product and Month,  
United States, 2002-2003 <sup>1</sup> (continued)**

Product and Month	By Month			Cumulative		
	2002	2003	Change From 2002	2002	2003	Change From 2002
	<i>1,000 Pounds</i>	<i>1,000 Pounds</i>	<i>Percent</i>	<i>1,000 Pounds</i>	<i>1,000 Pounds</i>	<i>Percent</i>
<b>Butter</b>						
Jan	140,687	141,440	0.5	140,687	141,440	0.5
Feb	125,352	128,465	2.5	266,039	269,905	1.5
Mar	128,966			395,005		
Apr	132,406			527,411		
May	126,533			653,944		
Jun	96,905			750,849		
Jul	93,975			844,824		
Aug	88,512			933,336		
Sep	92,264			1,025,600		
Oct	102,084			1,127,684		
Nov	104,221			1,231,905		
Dec	127,496			1,359,401		
<b>Nonfat Dry Milk, Human</b>						
Jan	118,892	133,758	12.5	118,892	133,758	12.5
Feb	125,838	132,552	5.3	244,730	266,310	8.8
Mar	147,761			392,491		
Apr	158,291			550,782		
May	158,062			708,844		
Jun	147,643			856,487		
Jul	123,733			980,220		
Aug	114,408			1,094,628		
Sep	93,763			1,188,391		
Oct	99,746			1,288,137		
Nov	96,075			1,384,212		
Dec	127,733			1,511,945		
<b>Total Dry Whey <sup>2</sup></b>						
Jan	90,205	97,664	8.3	90,205	97,664	8.3
Feb	85,878	87,983	2.5	176,083	185,647	5.4
Mar	96,495			272,578		
Apr	93,981			366,559		
May	98,373			464,932		
Jun	93,814			558,746		
Jul	93,607			652,353		
Aug	93,862			746,215		
Sep	89,970			836,185		
Oct	93,165			929,350		
Nov	91,599			1,020,949		
Dec	98,305			1,119,254		

See footnote(s) at end of table.

--continued

**Dairy Products: Production by Product and Month,  
United States, 2002-2003 <sup>1</sup> (continued)**

Product and Month	By Month			Cumulative		
	2002	2003	Change From 2002	2002	2003	Change From 2002
	<i>1,000 Pounds</i>	<i>1,000 Pounds</i>	<i>Percent</i>	<i>1,000 Pounds</i>	<i>1,000 Pounds</i>	<i>Percent</i>
<b>Cream Cottage Cheese</b>						
Jan	29,765	31,386	5.4	29,765	31,386	5.4
Feb	28,788	29,242	1.6	58,553	60,628	3.5
Mar	31,520			90,073		
Apr	30,502			120,575		
May	32,554			153,129		
Jun	30,388			183,517		
Jul	32,100			215,617		
Aug	33,145			248,762		
Sep	31,651			280,413		
Oct	31,595			312,008		
Nov	27,270			339,278		
Dec	27,573			366,851		
<b>Lowfat Cottage Cheese</b>						
Jan	29,609	30,397	2.7	29,609	30,397	2.7
Feb	30,006	29,128	-2.9	59,615	59,525	-0.2
Mar	32,509			92,124		
Apr	30,524			122,648		
May	34,477			157,125		
Jun	29,559			186,684		
Jul	34,416			221,100		
Aug	34,922			256,022		
Sep	31,669			287,691		
Oct	32,633			320,324		
Nov	27,202			347,526		
Dec	27,555			375,081		
	<i>1,000 Gallons</i>	<i>1,000 Gallons</i>	<i>Percent</i>	<i>1,000 Gallons</i>	<i>1,000 Gallons</i>	<i>Percent</i>
<b>Ice Cream, Hard</b>						
Jan	70,004	67,337	-3.8	70,004	67,337	-3.8
Feb	71,034	70,625	-0.6	141,038	137,962	-2.2
Mar	76,680			217,718		
Apr	80,214			297,932		
May	76,953			374,885		
Jun	81,127			456,012		
Jul	82,404			538,416		
Aug	78,039			616,455		
Sep	70,281			686,736		
Oct	70,472			757,208		
Nov	59,152			816,360		
Dec	58,320			874,680		

See footnote(s) at end of table.

--continued



**Dairy Products: Production by Product and Month,  
United States, 2002-2003 <sup>1</sup> (continued)**

Product and Month	By Month			Cumulative		
	2002	2003	Change From 2002	2002	2003	Change From 2002
	<i>1,000 Gallons</i>	<i>1,000 Gallons</i>	<i>Percent</i>	<i>1,000 Gallons</i>	<i>1,000 Gallons</i>	<i>Percent</i>
<b>Ice Cream, Lowfat</b>						
Jan	22,119	25,274	14.3	22,119	25,274	14.3
Feb	24,976	25,406	1.7	47,095	50,680	7.6
Mar	31,620			78,715		
Apr	36,060			114,775		
May	38,960			153,735		
Jun	39,773			193,508		
Jul	39,421			232,929		
Aug	36,811			269,740		
Sep	31,353			301,093		
Oct	28,820			329,913		
Nov	21,906			351,819		
Dec	23,724			375,543		
<b>Ice Cream, NF, Hard</b>						
Jan	2,074	1,584	-23.6	2,074	1,584	-23.6
Feb	1,610	1,707	6.0	3,684	3,291	-10.7
Mar	2,034			5,718		
Apr	1,561			7,279		
May	1,543			8,822		
Jun	1,415			10,237		
Jul	1,500			11,737		
Aug	1,462			13,199		
Sep	1,406			14,605		
Oct	1,574			16,179		
Nov	1,479			17,658		
Dec	1,195			18,853		
<b>Sherbet, Hard</b>						
Jan	3,796	4,056	6.8	3,796	4,056	6.8
Feb	4,050	4,427	9.3	7,846	8,483	8.1
Mar	4,786			12,632		
Apr	5,127			17,759		
May	5,417			23,176		
Jun	5,475			28,651		
Jul	5,531			34,182		
Aug	5,094			39,276		
Sep	4,135			43,411		
Oct	4,274			47,685		
Nov	3,062			50,747		
Dec	3,387			54,134		

See footnote(s) at end of table.

--continued

**Dairy Products: Production by Product and Month,  
United States, 2002-2003 <sup>1</sup> (continued)**

Product and Month	By Month			Cumulative		
	2002	2003	Change From 2002	2002	2003	Change From 2002
	<i>1,000 Gallons</i>	<i>1,000 Gallons</i>	<i>Percent</i>	<i>1,000 Gallons</i>	<i>1,000 Gallons</i>	<i>Percent</i>
Frozen Yogurt						
Jan	5,976	5,719	-4.3	5,976	5,719	-4.3
Feb	6,348	6,149	-3.1	12,324	11,868	-3.7
Mar	6,900			19,224		
Apr	6,878			26,102		
May	7,443			33,545		
Jun	6,985			40,530		
Jul	7,536			48,066		
Aug	7,031			55,097		
Sep	6,715			61,812		
Oct	6,346			68,158		
Nov	5,530			73,688		
Dec	5,131			78,819		

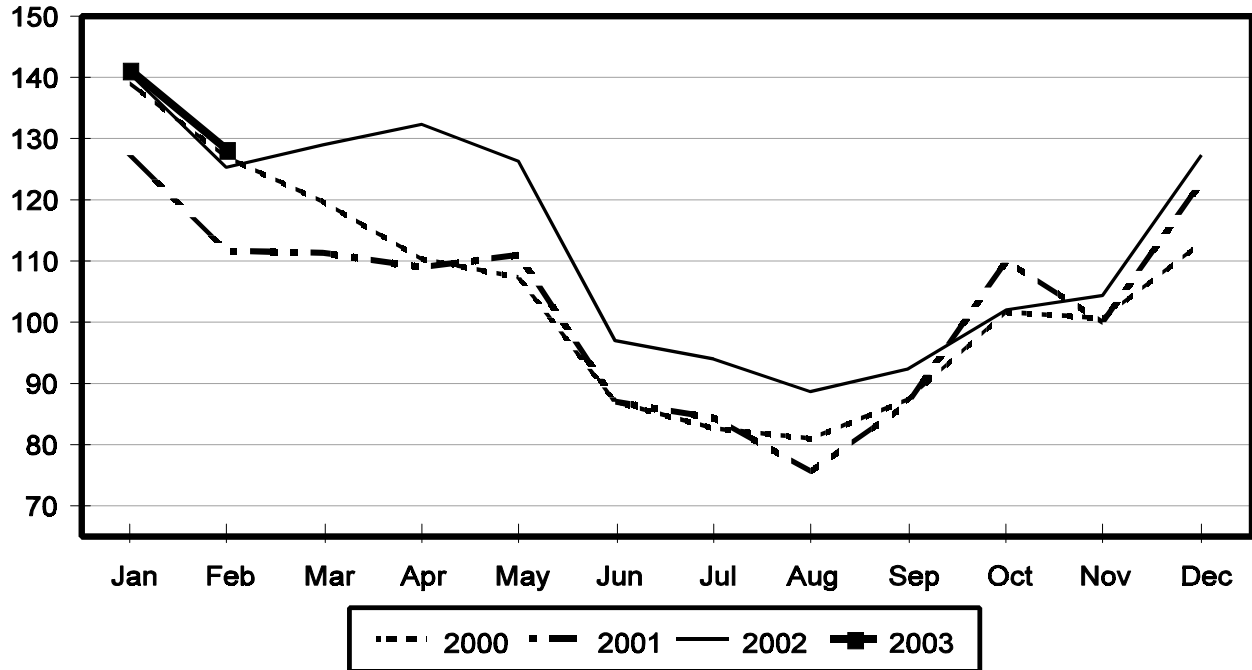
<sup>1</sup> January 2003 data revised.

<sup>2</sup> Excludes all modified dry whey products.

<sup>3</sup> Preliminary revisions for Mozzarella cheese for January through September 2002. Revisions to Mozzarella cheese are reflected in Italian cheese and Total cheese numbers. Annual revisions will be published in April 2003.

## Total Butter Production United States

Million Pounds



**Total Cheese, Excluding Cottage Cheese: Production by  
State and United States, February 2002-2003**

State	Feb 2002	Jan <sup>1</sup> 2003	Feb 2003	Change From	
				Feb 2002	Jan 2003
	<i>1,000 Pounds</i>	<i>1,000 Pounds</i>	<i>1,000 Pounds</i>	<i>Percent</i>	<i>Percent</i>
CA	129,055	146,624	133,347	3.3	-9.1
ID	48,370	51,240	44,582	-7.8	-13.0
IL	7,076	8,471	7,540	6.6	-11.0
IA	21,409	22,793	21,256	-0.7	-6.7
MA	68	58	58	-14.7	
MN	48,842	54,372	49,690	1.7	-8.6
MO	7,480	5,906	6,623	-11.5	12.1
NY	55,697	56,340	52,486	-5.8	-6.8
OH	12,638	14,634	12,915	2.2	-11.7
PA	33,165	31,913	31,814	-4.1	-0.3
SD	12,235	13,067	12,184	-0.4	-6.8
UT	4,494	5,531	5,329	18.6	-3.7
WA	11,780				
WI	163,429	182,679	165,464	1.2	-9.4
Oth Sts <sup>2</sup>	99,212	124,135	111,352	12.2	-10.3
US	654,950	717,763	654,640		-8.8
N Atlantic	103,258	103,692	98,790	-4.3	-4.7
S Atlantic	3,262	3,588	3,132	-4.0	-12.7
E N Central	196,112	222,226	199,764	1.9	-10.1
W N Central	98,260	104,605	96,466	-1.8	-7.8
S Central	4,350	6,838	6,914	58.9	1.1
West	249,708	276,814	249,574	-0.1	-9.8

<sup>1</sup> Revised.

<sup>2</sup> States not shown when fewer than 3 plants reported or individual plant operations could be disclosed. Percent change shown only when comparable States are included in the calculation.

**American Cheese: Production by State and United States, February 2002-2003**

State	Feb 2002	Jan <sup>1</sup> 2003	Feb 2003	Change From	
				Feb 2002	Jan 2003
	<i>1,000 Pounds</i>	<i>1,000 Pounds</i>	<i>1,000 Pounds</i>	<i>Percent</i>	<i>Percent</i>
CA	56,498	70,469	61,105	8.2	-13.3
ID	38,325	39,006	35,400	-7.6	-9.2
IA	10,994	12,275	10,748	-2.2	-12.4
MN	47,477	52,732	48,303	1.7	-8.4
NY	8,944	9,021	7,581	-15.2	-16.0
OH	2,774	3,332	2,431	-12.4	-27.0
OR	7,035	8,167	7,418	5.4	-9.2
SD	6,148	6,827	6,131	-0.3	-10.2
WA	11,539				
WI	67,900	71,500	63,400	-6.6	-11.3
Oth Sts <sup>2</sup>	29,749	46,188	42,370	42.4	-8.3
US	287,383	319,517	284,887	-0.9	-10.8
Atlantic	14,375	15,469	13,596	-5.4	-12.1
E N Central	71,739	76,294	66,813	-6.9	-12.4
W N Central	66,455	73,484	66,240	-0.3	-9.9
S Central	3,926	4,187	4,052	3.2	-3.2
West	130,888	150,083	134,186	2.5	-10.6

<sup>1</sup> Revised.

<sup>2</sup> States not shown when fewer than 3 plants reported or individual plant operations could be disclosed. Percent change shown only when comparable States are included in the calculation.

**Cheddar Cheese: Production by State and United States, February 2002-2003**

State	Feb 2002	Jan <sup>1</sup> 2003	Feb 2003	Change From	
				Feb 2002	Jan 2003
	<i>1,000 Pounds</i>	<i>1,000 Pounds</i>	<i>1,000 Pounds</i>	<i>Percent</i>	<i>Percent</i>
CA	42,864	51,705	42,871		-17.1
ID	18,558	17,557	15,906	-14.3	-9.4
MN	45,191	49,246	45,309	0.3	-8.0
NY	8,882	8,935	7,519	-15.3	-15.8
SD	4,017	5,250	4,868	21.2	-7.3
WA	9,389				
WI	54,000	57,700	51,300	-5.0	-11.1
Oth Sts <sup>2</sup>	42,070	57,393	51,643	22.8	-10.0
US	224,971	247,786	219,416	-2.5	-11.4
Atlantic	13,975	14,927	12,979	-7.1	-13.1
E N Cen	56,111	60,412	53,272	-5.1	-11.8
W N Cen	57,384	62,832	57,171	-0.4	-9.0
S Cen	3,901	4,177	4,032	3.4	-3.5
West	93,600	105,438	91,962	-1.8	-12.8

<sup>1</sup> Revised.

<sup>2</sup> States not shown when fewer than 3 plants reported or individual plant operations could be disclosed. Percent change shown only when comparable States are included in the calculation.

**Mozzarella Cheese: Production by State and United States, February 2002-2003**

State	Feb 2002	Jan <sup>1</sup> 2003	Feb 2003	Change From	
				Feb 2002	Jan 2003
	<i>1,000 Pounds</i>	<i>1,000 Pounds</i>	<i>1,000 Pounds</i>	<i>Percent</i>	<i>Percent</i>
CA	55,576	58,630	55,649	0.1	-5.1
NY	15,671	18,036	16,226	3.5	-10.0
WI	55,300	58,800	57,400	3.8	-2.4
Oth Sts <sup>2</sup>	94,741	96,889	88,941	-6.1	-8.2
US	221,288	232,355	218,216	-1.4	-6.1
Atlantic <sup>3</sup>	44,411	43,797	42,928	-3.3	-2.0
E N Central	67,199	73,673	70,267	4.6	-4.6
West	94,812	99,898	91,187	-3.8	-8.7

<sup>1</sup> Revised.

<sup>2</sup> States not shown when fewer than 3 plants reported or individual plant operations could be disclosed. Percent change shown only when comparable States are included in the calculation.

<sup>3</sup> Region totals may not add to U.S. when compiled regions could not be disclosed.

**Butter: Production by State and United States, February 2002-2003**

State	Feb 2002	Jan <sup>1</sup> 2003	Feb 2003	Change From	
				Feb 2002	Jan 2003
	<i>1,000 Pounds</i>	<i>1,000 Pounds</i>	<i>1,000 Pounds</i>	<i>Percent</i>	<i>Percent</i>
CA	31,956	39,525	33,640	5.3	-14.9
NY	2,901	2,673	2,369	-18.3	-11.4
PA	7,413	4,403	6,747	-9.0	53.2
WA	8,314				
WI	32,781	38,202	34,700	5.9	-9.2
Oth Sts <sup>2</sup>	41,987	56,637	51,009	21.5	-9.9
US	125,352	141,440	128,465	2.5	-9.2
N Atlantic <sup>3</sup>	14,137	11,416	13,091	-7.4	14.7
E N Central	38,453	42,245	38,412	-0.1	-9.1
W N Central	11,517	13,809	12,580	9.2	-8.9
West	45,726	56,360	48,277	5.6	-14.3

<sup>1</sup> Revised.

<sup>2</sup> States not shown when fewer than 3 plants reported or individual plant operations could be disclosed. Percent change shown only when comparable States are included in the calculation.

<sup>3</sup> Region totals may not add to U.S. when compiled regions could not be disclosed.

**Nonfat Dry Milk, Human: Production by State  
and United States, February 2002-2003**

State	Feb 2002	Jan <sup>1</sup> 2003	Feb 2003	Change From	
				Feb 2002	Jan 2003
	<i>1,000 Pounds</i>	<i>1,000 Pounds</i>	<i>1,000 Pounds</i>	<i>Percent</i>	<i>Percent</i>
CA	49,177	61,373	62,951	28.0	2.6
ID	7,605	6,333	5,667	-25.5	-10.5
WA	19,228				
Oth Sts <sup>2</sup>	49,828	66,052	63,934	28.3	-3.2
US	125,838	133,758	132,552	5.3	-0.9
Atlantic	18,086	15,048	14,636	-19.1	-2.7
E N Central	5,517	4,346	4,447	-19.4	2.3
W N Central	7,237	7,592	7,746	7.0	2.0
S Central	6,807	5,971	7,212	5.9	20.8
West	88,191	100,801	98,511	11.7	-2.3

<sup>1</sup> Revised.

<sup>2</sup> States not shown when fewer than 3 plants reported or individual plant operations could be disclosed. Percent change shown only when comparable States are included in the calculation.

**Dry Whey, Human: Production by State  
and United States, February 2002-2003**

State	Feb 2002	Jan <sup>1</sup> 2003	Feb 2003	Change From	
				Feb 2002	Jan 2003
	<i>1,000 Pounds</i>	<i>1,000 Pounds</i>	<i>1,000 Pounds</i>	<i>Percent</i>	<i>Percent</i>
CA	10,705	12,688	11,019	2.9	-13.2
MN	6,074	7,353	6,944	14.3	-5.6
NY	9,951	10,157	8,937	-10.2	-12.0
PA	8,611	11,200	9,384	9.0	-16.2
WA	6,553				
WI	22,721	25,289	23,800	4.7	-5.9
Oth Sts <sup>2</sup>	15,627	25,049	23,283	49.0	-7.1
US	80,242	91,736	83,367	3.9	-9.1
Atlantic	18,562	21,357	18,321	-1.3	-14.2
Central	40,223	45,183	41,781	3.9	-7.5
West	21,457	25,196	23,265	8.4	-7.7

<sup>1</sup> Revised.

<sup>2</sup> States not shown when fewer than 3 plants reported or individual plant operations could be disclosed. Percent change shown only when comparable States are included in the calculation.

**Ice Cream, Hard: Production by State and United States, February 2002-2003**

State	Feb 2002	Jan <sup>1</sup> 2003	Feb 2003	Change From	
				Feb 2002	Jan 2003
	<i>1,000 Gallons</i>	<i>1,000 Gallons</i>	<i>1,000 Gallons</i>	<i>Percent</i>	<i>Percent</i>
CA	9,337	7,647	9,080	-2.8	18.7
FL	2,000	1,700	1,650	-17.5	-2.9
IL	2,596	2,581	2,564	-1.2	-0.7
IN	6,717	7,145	8,599	28.0	20.3
MD	1,670	1,476	1,670		13.1
MA	5,431	5,351	5,642	3.9	5.4
MI	1,805	1,630	1,536	-14.9	-5.8
MN	3,584	2,634	3,104	-13.4	17.8
NH	7	5	6	-14.3	20.0
NY	2,300	2,200	2,300		4.5
NC	1,489	1,575	1,270	-14.7	-19.4
OH	2,671	2,515	2,566	-3.9	2.0
OR	850	760	718	-15.5	-5.5
PA	2,998	3,631	2,584	-13.8	-28.8
SD	2	3	2		-33.3
TN	1,574	1,316	1,480	-6.0	12.5
TX	4,035	3,878	4,013	-0.5	3.5
UT	1,162	1,426	1,174	1.0	-17.7
WA	1,164	1,287	1,153	-0.9	-10.4
Oth Sts <sup>2</sup>	19,642	18,577	19,514	-0.7	5.0
US	71,034	67,337	70,625	-0.6	4.9
N Atlantic	13,098	13,628	12,888	-1.6	-5.4
S Atlantic	6,545	6,366	6,007	-8.2	-5.6
E N Central	14,514	14,721	16,139	11.2	9.6
W N Central	12,255	10,573	10,930	-10.8	3.4
S Central	8,360	8,545	8,668	3.7	1.4
West	16,262	13,504	15,993	-1.7	18.4

<sup>1</sup> Revised.

<sup>2</sup> States not shown when fewer than 3 plants reported or individual plant operations could be disclosed. Percent change shown only when comparable States are included in the calculation.

**Canned Milk and Dry Milk Products: Manufacturers' Shipments,  
Stocks, and Selling Prices, February, 2002-2003**

Product	Feb 2002	Jan 2003 <sup>1</sup>	Feb 2003	Change From	
				Feb 2002	Jan 2003
<b>Manufacturers' Shipments <sup>2</sup></b>					
	<i>1,000 Pounds</i>	<i>1,000 Pounds</i>	<i>1,000 Pounds</i>	<i>Percent</i>	<i>Percent</i>
Nonfat Dry Milk, Human	133,609	141,599	131,787	-1.4	-6.9
<b>Manufacturers' Stocks End-of-Month <sup>3</sup></b>					
	<i>1,000 Pounds</i>	<i>1,000 Pounds</i>	<i>1,000 Pounds</i>	<i>Percent</i>	<i>Percent</i>
Canned Evaporated and Condensed Whole Milk	45,771	51,988	56,371	23.2	8.4
Nonfat Dry Milk, Human	142,499	111,569	122,955	-13.7	10.2
Dry Buttermilk, Total	9,001	10,625	10,304	14.5	-3.0

<sup>1</sup> Revised.

<sup>2</sup> For dry products, shipments of bulk goods only.

<sup>3</sup> Stocks held by manufacturers at all points and in transit.



**Procedures and Reliability:** Estimates included in this report are based on data provided each month by manufacturers of these products. In 32 States, the State Departments of Agriculture assist in collection of data, which eliminates duplicate reporting and reduces respondent burden. Data are collected by mail, personal and telephone interviews following the close of each month. There were 1,165 manufacturers that made one or more products in 2001. Each month, reports are generally received from all dairy plants in States with small numbers of plants. In States with large numbers of plants, survey procedures are designed to obtain monthly reports from all large plants and from a sample of small plants. Monthly estimates are based upon returns from about 70 percent of the plants which account for 70 to 90 percent of the total production of major dairy products.

**Revision Policy:** Monthly estimates are subject to revision the month following the preliminary estimates. Annual estimates are published in the "**Dairy Products**" report published each April which includes any revisions made to current and previous year. In preparing the annual report, an attempt is made to get information from all plants.

The next "Dairy Products" report will be released at 3 p.m. ET on May 5, 2003.

The United States Department of Agriculture (USDA) prohibits discrimination in all its programs on the basis of race, color, national origin, gender, religion, age, disability, political beliefs, sexual orientation, and marital or family status. (Not all prohibited bases apply to all programs.) Persons with disabilities who require alternative means for communication of program information (braille, large print, audiotape, etc.) should contact the USDA's TARGET Center at 202-720-2600 (voice and TDD).

To file a complaint of discrimination, write USDA, Director, Office of Civil Rights, Room 326-W, Whitten Building, 1400 Independence Avenue, SW, Washington, D.C., 20250-9410, or call 202-720-5964 (voice or TDD). USDA is an equal opportunity provider and employer.

## **ACCESS TO REPORTS!!**

---

For your convenience, there are several ways to obtain NASS reports, data products, and services:

### **INTERNET ACCESS**

All NASS reports are available free of charge on the worldwide Internet. For access, connect to the Internet and go to the NASS Home Page at: <http://www.usda.gov/nass/>. Select "Today's Reports" or Publications and then Reports Calendar or Publications and then Search, by Title or Subject.

### **E-MAIL SUBSCRIPTION**

All NASS reports are available by subscription free of charge direct to your e-mail address. Starting with the NASS Home Page at <http://www.usda.gov/nass/>, click on **Publications**, then click on the **Subscribe by E-mail** button which takes you to the page describing e-mail delivery of reports. Finally, click on **Go to the Subscription Page** and follow the instructions.

### **AUTOFAX ACCESS**

NASSFax service is available for some reports from your fax machine. Please call 202-720-2000, using the handset attached to your fax. Respond to the voice prompts. Document 0411 is a list of available reports.

-----  
**PRINTED REPORTS OR DATA PRODUCTS**

**CALL OUR TOLL-FREE ORDER DESK: 800-999-6779 (U.S. and Canada)**  
**Other areas, please call 703-605-6220      FAX: 703-605-6900**  
**(Visa, MasterCard, check, or money order acceptable for payment.)**  
-----

### **ASSISTANCE**

For **assistance** with general agricultural statistics or further information about NASS or its products or services, contact the **Agricultural Statistics Hotline** at **800-727-9540**, 7:30 a.m. to 4:00 p.m. ET, or e-mail: [nass@nass.usda.gov](mailto:nass@nass.usda.gov).

---