

Released May 5, 2003, by the National Agricultural Statistics Service (NASS), Agricultural Statistics Board, U.S. Department of Agriculture. For information on "Dairy Products" call Kevin Pautler at (202) 720-9168, office hours 7:30 a.m. to 4:00 p.m. ET.

March 2003 Highlights

Total cheese output (excluding cottage cheese) was 733 million pounds, 1.3 percent below March 2002 but 12.2 percent above February 2003.

American type cheese production totaled 316 million pounds, 1.9 percent below March 2002 but 10.6 percent above February 2003.

Butter production was 127 million pounds in March, 1 percent below March 2002 and 1.4 percent below February 2003.

Frozen dessert: (comparisons with March 2002)

Ice cream, Regular (hard) --- 73.4 million gallons, down 3.2 percent.

Ice cream, Lowfat (total) --- 35.6 million gallons, up 15.2 percent.

Ice cream, Nonfat (hard) --- 1.58 million gallons, down 15.0 percent.

Sherbet (hard) --- 5.00 million gallons, up 4.7 percent.

Frozen Yogurt (total) --- 5.79 million gallons, down 13.5 percent.

Nonfat dry milk for human food: (compared with March 2002) --- 146 million pounds, down 4.5 percent.

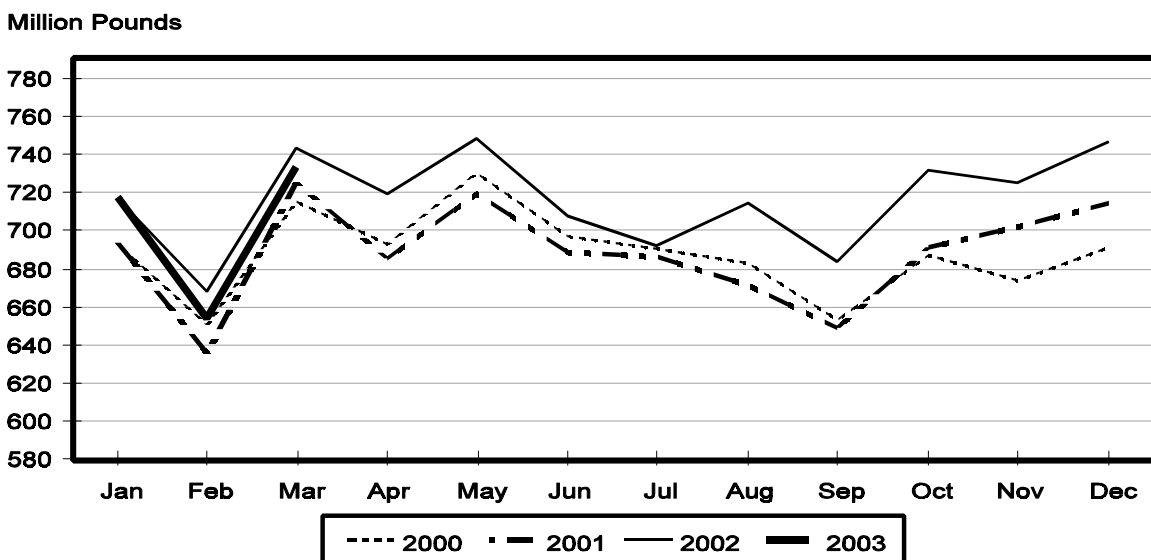
Dry whey products: (comparisons with March 2002)

Dry whey, human --- 95.8 million pounds, up 4.4 percent.

Dry whey, animal --- 5.44 million pounds, up 16.2 percent.

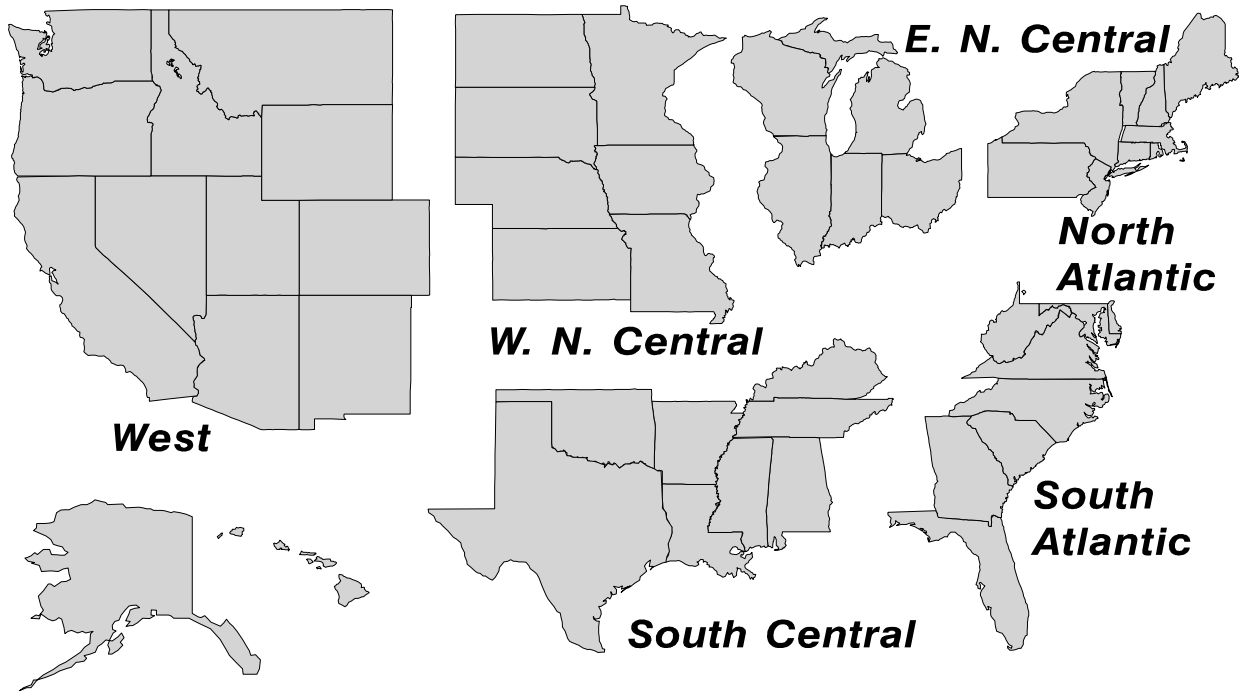
Dry whey, total --- 101 million pounds, up 5.0 percent.

Total Cheese Production United States



U. S. Geographic Regions Dairy Products

State totals are not published when fewer than 3 firms have reported or one firm comprises more than 60 percent of the State total. If we are not able to publish a region for confidentiality reasons, it will be combined with other regions when possible. For example, if North Atlantic can not be published, then it will be combined with South Atlantic to publish Atlantic. The West North Central and East North Central will be combined, if necessary, to form North Central. In the event that neither could be published, they may be combined with South Central to publish Central. Some tables will have only limited regions shown, therefore the regions may not add to the United States total.



**Dairy Products: Production by Product,
United States, March, 2002-2003**

Product	Mar 2002	Feb 2003 ¹	Mar 2003	Change From	
				Mar 2002	Feb 2003
	<i>1,000 Pounds</i>	<i>1,000 Pounds</i>	<i>1,000 Pounds</i>	<i>Percent</i>	<i>Percent</i>
Butter	127,695	128,362	126,553	-0.9	-1.4
Cheese					
American Types ²	322,054	285,649	315,948	-1.9	10.6
Cheddar	253,112	218,823	240,852	-4.8	10.1
Swiss	20,784	20,369	21,768	4.7	6.9
Brick and Muenster	6,658	6,625	7,304	9.7	10.2
Cream and Neufchatel	59,395	44,172	54,722	-7.9	23.9
Hispanic	9,724	9,371	11,310	16.3	20.7
Mozzarella	246,569	218,084	243,079	-1.4	11.5
Other Italian Types	60,755	54,532	62,466	2.8	14.5
Total Italian Types	307,324	272,616	305,545	-0.6	12.1
All Other Types	16,825	14,714	16,507	-1.9	12.2
Total	742,764	653,516	733,104	-1.3	12.2
Cottage Cheese, Curd ³	36,945	32,433	37,221	0.7	14.8
Cottage Cheese, Cream ⁴	31,607	29,155	31,932	1.0	9.5
Cottage Cheese, Lowfat ⁵	31,999	29,345	32,201	0.6	9.7
Canned Evaporated and Condensed Whole Milk	55,236	35,666	51,696	-6.4	44.9
Dry Whole Milk	1,883	2,601	3,358	78.3	29.1
Nonfat Dry Milk, Human	153,057	130,355	146,237	-4.5	12.2
Dry Skim Milk, Animal	767	463	379	-50.6	-18.1
Dry Buttermilk	5,903	6,416	5,688	-3.6	-11.3
Sour Cream		41,475	50,145		20.9
Yogurt, Plain & Flavored	186,653	179,026	194,554	4.2	8.7
	<i>1,000 Gallons</i>	<i>1,000 Gallons</i>	<i>1,000 Gallons</i>	<i>Percent</i>	<i>Percent</i>
Frozen Products					
Ice Cream, Hard	75,823	70,615	73,363	-3.2	3.9
Ice Cream, Lowfat, Hard	9,439	8,413	10,309	9.2	22.5
Ice Cream, Lowfat, Soft	21,422	17,440	25,248	17.9	44.8
Ice Cream, Lowfat, Total	30,861	25,853	35,557	15.2	37.5
Ice Cream, Nonfat, Hard	1,858	1,689	1,579	-15.0	-6.5
Sherbet, Hard	4,775	4,406	4,999	4.7	13.5
Water and Juice Ices	6,752	5,133	5,853	-13.3	14.0
Frozen Yogurt, Total	6,696	5,505	5,792	-13.5	5.2
Regular & Lowfat, Hard	2,212	1,886	1,979	-10.5	4.9
Nonfat, Hard	1,217	976	987	-18.9	1.1
Other Frozen Dairy Products	709	680	731	3.1	7.5
Mix for Frozen Products					
Ice Cream Mix	44,508	40,966	44,839	0.7	9.5
Ice Cream, Lowfat, Mix	17,765	14,281	19,690	10.8	37.9
Ice Cream, Nonfat, Mix	1,244	1,187	1,177	-5.4	-0.8
Sherbet Mix	3,381	3,187	3,466	2.5	8.8
Yogurt Mix	3,694	3,238	3,407	-7.8	5.2

¹ Revised.

² Includes Cheddar, Colby, Monterey, and Jack.

³ Mostly used for processing into cream or lowfat cottage cheese.

⁴ Fat content 4 percent or more.

⁵ Fat content less than 4 percent.

**Whey and Modified Whey Products: Production, Stocks,
and Prices, United States, March, 2002-2003**

Product	Mar 2002	Feb 2003 ¹	Mar 2003	Change From	
				Mar 2002	Feb 2003
Production					
	<i>1,000 Pounds</i>	<i>1,000 Pounds</i>	<i>1,000 Pounds</i>	<i>Percent</i>	<i>Percent</i>
Condensed Whey, Solids Content ²					
Sweet-Type, Human	9,353	8,919	8,166	-12.7	-8.4
Sweet-Type, Animal ³					
Dry Whey Products					
Dry Whey, Human	91,727	84,087	95,802	4.4	13.9
Dry Whey, Animal	4,678	4,625	5,435	16.2	17.5
Dry Whey, Total	96,405	88,712	101,237	5.0	14.1
Reduced Lactose and Minerals					
Human Food	8,277	4,104	1,993	-75.9	-51.4
Animal Feed	3,514	3,249	3,445	-2.0	6.0
Lactose, Human and Animal	49,303	48,273	54,145	9.8	12.2
Whey					
Solids in Wet Blends, Animal ³	2,704				
Protein Concentrate, Human ⁷	25,732	30,484	28,746	11.7	-5.7
Protein Concentrate, Animal ⁷	3,393	3,031	2,949	-13.1	-2.7
Manufacturers' Stocks End-of-Month ⁴					
	<i>1,000 Pounds</i>	<i>1,000 Pounds</i>	<i>1,000 Pounds</i>	<i>Percent</i>	<i>Percent</i>
Dry Whey Products					
Dry Whey, Human	42,369	36,631	43,453	2.6	18.6
Dry Whey, Animal	1,145	1,653	1,893	65.3	14.5
Reduced Lactose and Minerals					
Human and Animal ⁵	8,283	11,782	10,412	25.7	-11.6
Lactose, Human and Animal	44,316	39,694	44,739	1.0	12.7
Whey Protein Concentrate, Human ⁷	24,962	22,650	25,455	2.0	12.4
Whey Protein Concentrate, Animal ⁷	1,311	1,790	1,767	34.8	-1.3
Manufacturers' Selling Price ⁶					
	<i>Cents per Pound</i>	<i>Cents per Pound</i>	<i>Cents per Pound</i>	<i>Cents Change</i>	<i>Cents Change</i>
Dry Whey, Animal	18.4	14.5	14.4	-4.0	-0.1

¹ Revised.

² Final marketable product only. Does not include quantity used or shipped to another plant for further processing into dry whey or modified whey products.

³ Not shown when fewer than three plants reported or individual plant operations could be disclosed

⁴ Stocks held by manufacturers at all points and in transit.

⁵ Reduced lactose and minerals stocks combined to avoid disclosure of individual operations.

⁶ Prices for bulk goods, f.o.b. plant. Average monthly prices reported by firms.

⁷ Whey Protein Concentrate, 25.0 to 89.9 percent.

**Dairy Products: Production by Product and Month,
United States, 2002-2003 ¹**

Product and Month	By Month			Cumulative		
	2002	2003	Change From 2002	2002	2003	Change From 2002
	<i>1,000 Pounds</i>	<i>1,000 Pounds</i>	<i>Percent</i>	<i>1,000 Pounds</i>	<i>1,000 Pounds</i>	<i>Percent</i>
Total Cheese ³						
Jan	717,454	717,763		717,454	717,763	
Feb	667,887	653,516	-2.2	1,385,341	1,371,279	-1.0
Mar	742,764	733,104	-1.3	2,128,105	2,104,383	-1.1
Apr	719,231			2,847,336		
May	748,263			3,595,599		
Jun	708,284			4,303,883		
Jul	692,195			4,996,078		
Aug	714,314			5,710,392		
Sep	683,895			6,394,287		
Oct	732,157			7,126,444		
Nov	725,444			7,851,888		
Dec	747,161			8,599,049		
American Cheese						
Jan	317,538	319,517	0.6	317,538	319,517	0.6
Feb	292,857	285,649	-2.5	610,395	605,166	-0.9
Mar	322,054	315,948	-1.9	932,449	921,114	-1.2
Apr	320,432			1,252,881		
May	329,921			1,582,802		
Jun	313,998			1,896,800		
Jul	305,409			2,202,209		
Aug	309,640			2,511,849		
Sep	287,537			2,799,386		
Oct	297,840			3,097,226		
Nov	294,363			3,391,589		
Dec	317,426			3,709,015		
Cheddar Cheese						
Jan	246,385	247,786	0.6	246,385	247,786	0.6
Feb	227,721	218,823	-3.9	474,106	466,609	-1.6
Mar	253,112	240,852	-4.8	727,218	707,461	-2.7
Apr	253,909			981,127		
May	258,360			1,239,487		
Jun	243,222			1,482,709		
Jul	232,613			1,715,322		
Aug	231,669			1,946,991		
Sep	214,095			2,161,086		
Oct	219,119			2,380,205		
Nov	219,669			2,599,874		
Dec	240,203			2,840,077		

See footnote(s) at end of table.

--continued

**Dairy Products: Production by Product and Month,
United States, 2002-2003 ¹ (continued)**

Product and Month	By Month			Cumulative		
	2002	2003	Change From 2002	2002	2003	Change From 2002
	<i>1,000 Pounds</i>	<i>1,000 Pounds</i>	<i>Percent</i>	<i>1,000 Pounds</i>	<i>1,000 Pounds</i>	<i>Percent</i>
Italian Cheese ³						
Jan	296,654	293,345	-1.1	296,654	293,345	-1.1
Feb	278,013	272,616	-1.9	574,667	565,961	-1.5
Mar	307,324	305,545	-0.6	881,991	871,506	-1.2
Apr	289,919			1,171,910		
May	305,072			1,476,982		
Jun	280,388			1,757,370		
Jul	275,506			2,032,876		
Aug	285,840			2,318,716		
Sep	277,883			2,596,599		
Oct	300,818			2,897,417		
Nov	297,400			3,194,817		
Dec	311,661			3,506,478		
Mozzarella ³						
Jan	236,958	232,355	-1.9	236,958	232,355	-1.9
Feb	223,384	218,084	-2.4	460,342	450,439	-2.2
Mar	246,569	243,079	-1.4	706,911	693,518	-1.9
Apr	231,324			938,235		
May	247,659			1,185,894		
Jun	228,778			1,414,672		
Jul	222,293			1,636,965		
Aug	229,911			1,866,876		
Sep	226,158			2,093,034		
Oct	237,294			2,330,328		
Nov	234,783			2,565,111		
Dec	248,601			2,813,712		
Other Italian						
Jan	59,696	60,990	2.2	59,696	60,990	2.2
Feb	54,629	54,532	-0.2	114,325	115,522	1.0
Mar	60,755	62,466	2.8	175,080	177,988	1.7
Apr	58,595			233,675		
May	57,413			291,088		
Jun	51,610			342,698		
Jul	53,213			395,911		
Aug	55,929			451,840		
Sep	51,725			503,565		
Oct	63,524			567,089		
Nov	62,617			629,706		
Dec	63,060			692,766		

See footnote(s) at end of table.

--continued

**Dairy Products: Production by Product and Month,
United States, 2002-2003 ¹ (continued)**

Product and Month	By Month			Cumulative		
	2002	2003	Change From 2002	2002	2003	Change From 2002
	<i>1,000 Pounds</i>	<i>1,000 Pounds</i>	<i>Percent</i>	<i>1,000 Pounds</i>	<i>1,000 Pounds</i>	<i>Percent</i>
Butter						
Jan	140,069	141,440	1.0	140,069	141,440	1.0
Feb	124,231	128,362	3.3	264,300	269,802	2.1
Mar	127,695	126,553	-0.9	391,995	396,355	1.1
Apr	131,605			523,600		
May	125,484			649,084		
Jun	95,818			744,902		
Jul	94,409			839,311		
Aug	88,883			928,194		
Sep	92,818			1,021,012		
Oct	102,613			1,123,625		
Nov	103,932			1,227,557		
Dec	127,591			1,355,148		
Nonfat Dry Milk, Human						
Jan	128,675	133,758	4.0	128,675	133,758	4.0
Feb	127,707	130,355	2.1	256,382	264,113	3.0
Mar	153,057	146,237	-4.5	409,439	410,350	0.2
Apr	164,159			573,598		
May	163,379			736,977		
Jun	152,982			889,959		
Jul	129,071			1,019,030		
Aug	117,870			1,136,900		
Sep	97,191			1,234,091		
Oct	103,357			1,337,448		
Nov	99,049			1,436,497		
Dec	132,494			1,568,991		
Total Dry Whey ²						
Jan	90,071	97,664	8.4	90,071	97,664	8.4
Feb	84,430	88,712	5.1	174,501	186,376	6.8
Mar	96,405	101,237	5.0	270,906	287,613	6.2
Apr	93,868			364,774		
May	98,417			463,191		
Jun	93,720			556,911		
Jul	92,358			649,269		
Aug	93,820			743,089		
Sep	89,639			832,728		
Oct	93,177			925,905		
Nov	91,599			1,017,504		
Dec	98,268			1,115,772		

See footnote(s) at end of table.

--continued

**Dairy Products: Production by Product and Month,
United States, 2002-2003¹ (continued)**

Product and Month	By Month			Cumulative		
	2002	2003	Change From 2002	2002	2003	Change From 2002
	<i>1,000 Pounds</i>	<i>1,000 Pounds</i>	<i>Percent</i>	<i>1,000 Pounds</i>	<i>1,000 Pounds</i>	<i>Percent</i>
Cream Cottage Cheese						
Jan	30,045	31,386	4.5	30,045	31,386	4.5
Feb	29,034	29,155	0.4	59,079	60,541	2.5
Mar	31,607	31,932	1.0	90,686	92,473	2.0
Apr	31,454			122,140		
May	32,966			155,106		
Jun	30,787			185,893		
Jul	32,588			218,481		
Aug	33,753			252,234		
Sep	31,945			284,179		
Oct	31,876			316,055		
Nov	27,764			343,819		
Dec	28,580			372,399		
Lowfat Cottage Cheese						
Jan	29,525	30,397	3.0	29,525	30,397	3.0
Feb	29,344	29,345		58,869	59,742	1.5
Mar	31,999	32,201	0.6	90,868	91,943	1.2
Apr	31,091			121,959		
May	34,658			156,617		
Jun	29,266			185,883		
Jul	34,105			219,988		
Aug	34,778			254,766		
Sep	31,505			286,271		
Oct	32,349			318,620		
Nov	27,292			345,912		
Dec	28,384			374,296		
	<i>1,000 Gallons</i>	<i>1,000 Gallons</i>	<i>Percent</i>	<i>1,000 Gallons</i>	<i>1,000 Gallons</i>	<i>Percent</i>
Ice Cream, Hard						
Jan	69,696	67,337	-3.4	69,696	67,337	-3.4
Feb	69,293	70,615	1.9	138,989	137,952	-0.7
Mar	75,823	73,363	-3.2	214,812	211,315	-1.6
Apr	80,364			295,176		
May	77,609			372,785		
Jun	80,779			453,564		
Jul	82,999			536,563		
Aug	77,896			614,459		
Sep	69,894			684,353		
Oct	70,501			754,854		
Nov	57,374			812,228		
Dec	53,903			866,131		

See footnote(s) at end of table.

--continued

**Dairy Products: Production by Product and Month,
United States, 2002-2003 ¹ (continued)**

Product and Month	By Month			Cumulative		
	2002	2003	Change From 2002	2002	2003	Change From 2002
	<i>1,000 Gallons</i>	<i>1,000 Gallons</i>	<i>Percent</i>	<i>1,000 Gallons</i>	<i>1,000 Gallons</i>	<i>Percent</i>
Ice Cream, Lowfat						
Jan	23,520	25,274	7.5	23,520	25,274	7.5
Feb	25,096	25,853	3.0	48,616	51,127	5.2
Mar	30,861	35,557	15.2	79,477	86,684	9.1
Apr	34,564			114,041		
May	37,863			151,904		
Jun	37,347			189,251		
Jul	36,211			225,462		
Aug	34,033			259,495		
Sep	28,540			288,035		
Oct	27,696			315,731		
Nov	22,428			338,159		
Dec	23,428			361,587		
Ice Cream, NF, Hard						
Jan	1,665	1,584	-4.9	1,665	1,584	-4.9
Feb	1,350	1,689	25.1	3,015	3,273	8.6
Mar	1,858	1,579	-15.0	4,873	4,852	-0.4
Apr	1,693			6,566		
May	1,566			8,132		
Jun	1,483			9,615		
Jul	1,546			11,161		
Aug	1,534			12,695		
Sep	1,423			14,118		
Oct	1,572			15,690		
Nov	1,451			17,141		
Dec	1,250			18,391		
Sherbet, Hard						
Jan	3,731	4,056	8.7	3,731	4,056	8.7
Feb	3,904	4,406	12.9	7,635	8,462	10.8
Mar	4,775	4,999	4.7	12,410	13,461	8.5
Apr	5,047			17,457		
May	5,250			22,707		
Jun	5,225			27,932		
Jul	5,478			33,410		
Aug	4,629			38,039		
Sep	4,124			42,163		
Oct	4,058			46,221		
Nov	2,934			49,155		
Dec	3,189			52,344		

See footnote(s) at end of table.

--continued

**Dairy Products: Production by Product and Month,
United States, 2002-2003¹ (continued)**

Product and Month	By Month			Cumulative		
	2002	2003	Change From 2002	2002	2003	Change From 2002
	<i>1,000 Gallons</i>	<i>1,000 Gallons</i>	<i>Percent</i>	<i>1,000 Gallons</i>	<i>1,000 Gallons</i>	<i>Percent</i>
Frozen Yogurt						
Jan	5,715	5,719	0.1	5,715	5,719	0.1
Feb	6,012	5,505	-8.4	11,727	11,224	-4.3
Mar	6,696	5,792	-13.5	18,423	17,016	-7.6
Apr	7,156			25,579		
May	6,932			32,511		
Jun	6,498			39,009		
Jul	6,722			45,731		
Aug	6,619			52,350		
Sep	6,046			58,396		
Oct	5,842			64,238		
Nov	4,937			69,175		
Dec	4,231			73,406		

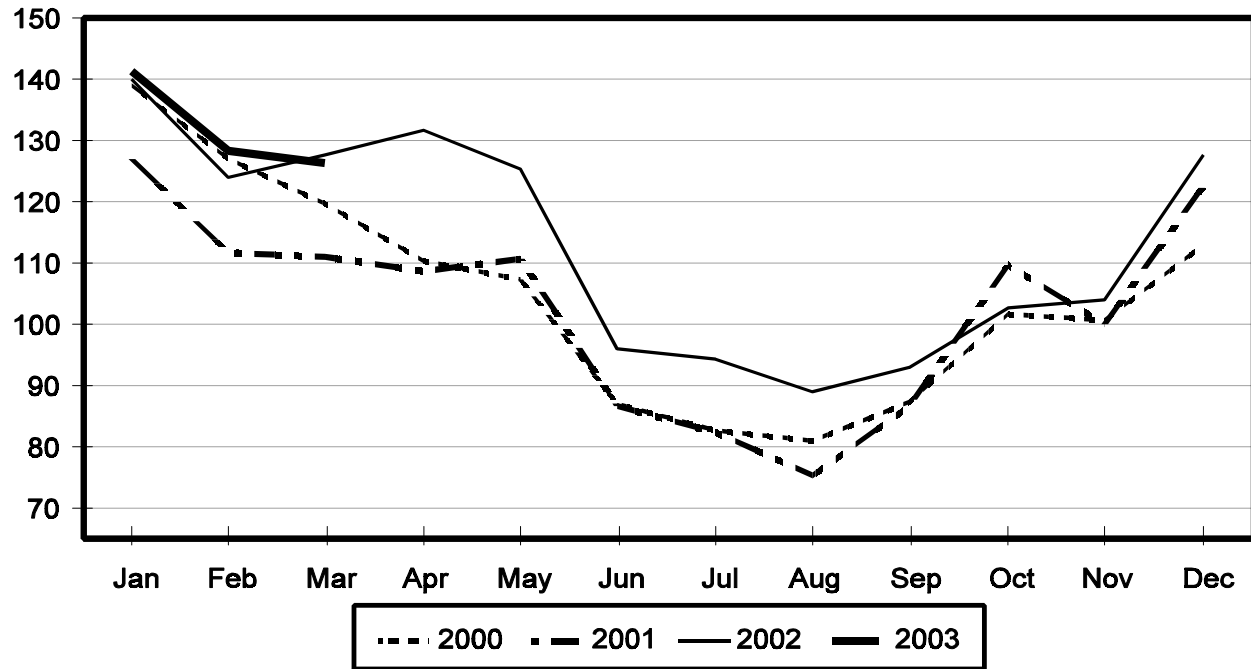
¹ February 2003 data revised.

² Excludes all modified dry whey products.

³ Preliminary revisions for Mozzarella cheese for January through September 2002. Revisions to Mozzarella cheese are reflected in Italian cheese and Total cheese numbers. Annual revisions will be published in April 2003.

Total Butter Production United States

Million Pounds



**Total Cheese, Excluding Cottage Cheese: Production by
State and United States, March 2002-2003**

State	Mar 2002	Feb ¹ 2003	Mar 2003	Change From	
				Mar 2002	Feb 2003
	<i>1,000 Pounds</i>	<i>1,000 Pounds</i>	<i>1,000 Pounds</i>	<i>Percent</i>	<i>Percent</i>
CA	143,961	133,298	149,780	4.0	12.4
ID	50,991	44,558	52,927	3.8	18.8
IL	7,751	7,540	8,606	11.0	14.1
IA	24,714	23,480	22,989	-7.0	-2.1
MA	75	58	79	5.3	36.2
MN	54,175	50,362	55,928	3.2	11.1
MO	8,077	6,622	8,338	3.2	25.9
NY	64,112	52,491	61,383	-4.3	16.9
OH	13,533	13,009	14,135	4.4	8.7
PA	31,725	27,706	31,662	-0.2	14.3
SD	13,307	12,141	13,304		9.6
UT	5,118	4,856	4,712	-7.9	-3.0
WA	13,240				
WI	194,517	165,565	185,245	-4.8	11.9
Oth Sts ²	117,468	111,830	124,016	5.6	10.9
US	742,764	653,516	733,104	-1.3	12.2
N Atlantic	116,947	94,675	108,206	-7.5	14.3
S Atlantic	3,351	3,132	3,224	-3.8	2.9
E N Central	230,016	199,979	223,058	-3.0	11.5
W N Central	110,237	99,318	107,730	-2.3	8.5
S Central	5,559	6,917	8,306	49.4	20.1
West	276,654	249,495	282,580	2.1	13.3

¹ Revised.

² States not shown when fewer than 3 plants reported or individual plant operations could be disclosed. Percent change shown only when comparable States are included in the calculation.

American Cheese: Production by State and United States, March 2002-2003

State	Mar 2002	Feb ¹ 2003	Mar 2003	Change From	
				Mar 2002	Feb 2003
	<i>1,000 Pounds</i>	<i>1,000 Pounds</i>	<i>1,000 Pounds</i>	<i>Percent</i>	<i>Percent</i>
CA	69,616	61,106	70,975	2.0	16.2
ID	40,340	35,376	38,511	-4.5	8.9
IA	11,917	10,962	11,475	-3.7	4.7
MN	51,868	48,970	54,696	5.5	11.7
NY	9,120	7,581	8,005	-12.2	5.6
OH	2,981	2,431	2,943	-1.3	21.1
OR	7,944	7,418	8,440	6.2	13.8
SD	6,687	6,130	6,748	0.9	10.1
WA	13,043				
WI	74,313	63,400	68,400	-8.0	7.9
Oth Sts ²	34,225	42,275	45,755	33.7	8.2
US	322,054	285,649	315,948	-1.9	10.6
Atlantic	14,789	13,592	12,079	-18.3	-11.1
E N Central	78,344	66,813	72,593	-7.3	8.7
W N Central	72,222	67,119	73,923	2.4	10.1
S Central	5,232	4,055	5,523	5.6	36.2
West	151,467	134,070	151,830	0.2	13.2

¹ Revised.

² States not shown when fewer than 3 plants reported or individual plant operations could be disclosed. Percent change shown only when comparable States are included in the calculation.

Cheddar Cheese: Production by State and United States, March 2002-2003

State	Mar 2002	Feb ¹ 2003	Mar 2003	Change From	
				Mar 2002	Feb 2003
	<i>1,000 Pounds</i>	<i>1,000 Pounds</i>	<i>1,000 Pounds</i>	<i>Percent</i>	<i>Percent</i>
CA	52,148	42,871	47,667	-8.6	11.2
ID	19,631	15,906	17,162	-12.6	7.9
MN	49,342	45,264	51,535	4.4	13.9
NY	9,010	7,519	7,900	-12.3	5.1
SD	3,726	4,867	4,321	16.0	-11.2
WA	11,114				
WI	60,570	51,300	55,600	-8.2	8.4
Oth Sts ²	47,571	51,096	56,667	19.1	10.9
US	253,112	218,823	240,852	-4.8	10.1
Atlantic	14,445	12,975	11,271	-22.0	-13.1
E N Cen	62,805	53,272	58,031	-7.6	8.9
W N Cen	61,627	57,115	63,132	2.4	10.5
S Cen	5,227	4,035	5,508	5.4	36.5
West	109,008	91,426	102,910	-5.6	12.6

¹ Revised.

² States not shown when fewer than 3 plants reported or individual plant operations could be disclosed. Percent change shown only when comparable States are included in the calculation.

Mozzarella Cheese: Production by State and United States, March 2002-2003

State	Mar 2002	Feb ¹ 2003	Mar 2003	Change From	
				Mar 2002	Feb 2003
	<i>1,000 Pounds</i>	<i>1,000 Pounds</i>	<i>1,000 Pounds</i>	<i>Percent</i>	<i>Percent</i>
CA	55,161	55,649	61,058	10.7	9.7
NY	18,251	16,226	17,339	-5.0	6.9
PA	17,992	15,694	17,218	-4.3	9.7
WI	69,628	57,400	64,600	-7.2	12.5
Oth Sts ²	85,537	73,115	82,864	-3.1	13.3
US	246,569	218,084	243,079	-1.4	11.5
Atlantic ³	48,409	38,842	43,351	-10.4	11.6
E N Central	82,796	70,282	78,550	-5.1	11.8
West	98,212	91,079	103,423	5.3	13.6

¹ Revised.

² States not shown when fewer than 3 plants reported or individual plant operations could be disclosed. Percent change shown only when comparable States are included in the calculation.

³ Region totals may not add to U.S. when compiled regions could not be disclosed.

Butter: Production by State and United States, March 2002-2003

State	Mar 2002	Feb ¹ 2003	Mar 2003	Change From	
				Mar 2002	Feb 2003
	<i>1,000 Pounds</i>	<i>1,000 Pounds</i>	<i>1,000 Pounds</i>	<i>Percent</i>	<i>Percent</i>
CA	35,826	33,640	34,788	-2.9	3.4
NY	2,668	2,368	2,336	-12.4	-1.4
PA	8,417	6,747	6,698	-20.4	-0.7
WA	9,668				
WI	30,096	34,700	31,700	5.3	-8.6
Oth Sts ²	41,020	50,907	51,031	24.4	0.2
US	127,695	128,362	126,553	-0.9	-1.4
N Atlantic ³	15,434	13,090	13,210	-14.4	0.9
E N Central	34,452	38,412	35,688	3.6	-7.1
W N Central	11,537	12,508	10,326	-10.5	-17.4
West	51,792	48,247	50,621	-2.3	4.9

¹ Revised.

² States not shown when fewer than 3 plants reported or individual plant operations could be disclosed. Percent change shown only when comparable States are included in the calculation.

³ Region totals may not add to U.S. when compiled regions could not be disclosed.

**Nonfat Dry Milk, Human: Production by State
and United States, March 2002-2003**

State	Mar 2002	Feb ¹ 2003	Mar 2003	Change From	
				Mar 2002	Feb 2003
	<i>1,000 Pounds</i>	<i>1,000 Pounds</i>	<i>1,000 Pounds</i>	<i>Percent</i>	<i>Percent</i>
CA	70,569	61,993	68,288	-3.2	10.2
ID	8,000	5,667	6,362	-20.5	12.3
WA	17,176				
Oth Sts ²	57,312	62,695	71,587	24.9	14.2
US	153,057	130,355	146,237	-4.5	12.2
Atlantic	20,041	14,636	16,612	-17.1	13.5
E N Central	4,329	4,447	4,633	7.0	4.2
W N Central	7,829	6,516	6,796	-13.2	4.3
S Central	9,017	7,233	7,603	-15.7	5.1
West	111,841	97,523	110,593	-1.1	13.4

¹ Revised.

² States not shown when fewer than 3 plants reported or individual plant operations could be disclosed. Percent change shown only when comparable States are included in the calculation.

**Dry Whey, Human: Production by State
and United States, March 2002-2003**

State	Mar 2002	Feb ¹ 2003	Mar 2003	Change From	
				Mar 2002	Feb 2003
	<i>1,000 Pounds</i>	<i>1,000 Pounds</i>	<i>1,000 Pounds</i>	<i>Percent</i>	<i>Percent</i>
CA	13,195	11,019	11,708	-11.3	6.3
MN	7,241	7,138	7,260	0.3	1.7
NY	10,917	8,937	9,423	-13.7	5.4
PA	9,655	9,060	10,978	13.7	21.2
WA	7,395				
WI	25,309	24,526	31,700	25.3	29.3
Oth Sts ²	18,015	23,407	24,733	37.3	5.7
US	91,727	84,087	95,802	4.4	13.9
Atlantic	20,572	17,997	20,401	-0.8	13.4
Central	45,922	42,649	50,071	9.0	17.4
West	25,233	23,441	25,330	0.4	8.1

¹ Revised.

² States not shown when fewer than 3 plants reported or individual plant operations could be disclosed. Percent change shown only when comparable States are included in the calculation.

Ice Cream, Hard: Production by State and United States, March 2002-2003

State	Mar 2002	Feb ¹ 2003	Mar 2003	Change From	
				Mar 2002	Feb 2003
	<i>1,000 Gallons</i>	<i>1,000 Gallons</i>	<i>1,000 Gallons</i>	<i>Percent</i>	<i>Percent</i>
CA	12,096	9,090	10,656	-11.9	17.2
FL	1,667	1,650	1,600	-4.0	-3.0
IL	2,850	2,564	3,179	11.5	24.0
IN	7,226	8,599	7,613	5.4	-11.5
MD	1,888	1,670	1,806	-4.3	8.1
MA	6,025	5,642	5,143	-14.6	-8.8
MI	1,746	1,536	1,565	-10.4	1.9
MN	4,378	3,104	4,172	-4.7	34.4
MO	1,214	1,694	1,884	55.2	11.2
NY	2,379	2,300	3,100	30.3	34.8
NC	1,407	1,233	1,366	-2.9	10.8
OH	2,792	2,566	2,751	-1.5	7.2
OR	923	718	950	2.9	32.3
PA	3,387	2,584	3,637	7.4	40.8
SD	2	2	2		
TN	2,077	1,480	1,535	-26.1	3.7
TX	3,767	4,013	3,629	-3.7	-9.6
UT	1,346	1,181	1,220	-9.4	3.3
WA	1,219	1,142	975	-20.0	-14.6
Oth Sts ²	17,434	17,847	16,580	-4.9	-7.1
US	75,823	70,615	73,363	-3.2	3.9
N Atlantic	14,244	12,871	14,503	1.8	12.7
S Atlantic	6,380	5,970	6,308	-1.1	5.7
E N Central	15,431	16,139	16,037	3.9	-0.6
W N Central	12,543	10,958	11,869	-5.4	8.3
S Central	9,464	8,668	8,689	-8.2	0.2
West	17,761	16,009	15,957	-10.2	-0.3

¹ Revised.

² States not shown when fewer than 3 plants reported or individual plant operations could be disclosed. Percent change shown only when comparable States are included in the calculation.

**Canned Milk and Dry Milk Products: Manufacturers' Shipments,
Stocks, and Selling Prices, March, 2002-2003**

Product	Mar 2002	Feb 2003 ¹	Mar 2003	Change From	
				Mar 2002	Feb 2003
	Manufacturers' Shipments ²				
	<i>1,000 Pounds</i>	<i>1,000 Pounds</i>	<i>1,000 Pounds</i>	<i>Percent</i>	<i>Percent</i>
Nonfat Dry Milk, Human	155,385	131,769	134,665	-13.3	2.2
	Manufacturers' Stocks End-of-Month ³				
	<i>1,000 Pounds</i>	<i>1,000 Pounds</i>	<i>1,000 Pounds</i>	<i>Percent</i>	<i>Percent</i>
Canned Evaporated and Condensed Whole Milk	43,642	56,779	54,570	25.0	-3.9
Nonfat Dry Milk, Human	159,865	116,200	117,138	-26.7	0.8
Dry Buttermilk, Total	9,670	10,665	11,241	16.2	5.4

¹ Revised.

² For dry products, shipments of bulk goods only.

³ Stocks held by manufacturers at all points and in transit.

Procedures and Reliability: Estimates included in this report are based on data provided each month by manufacturers of these products. In 32 States, the State Departments of Agriculture assist in collection of data, which eliminates duplicate reporting and reduces respondent burden. Data are collected by mail, personal and telephone interviews following the close of each month. There were 1,153 manufacturers that made one or more products in 2002. Each month, reports are generally received from all dairy plants in States with small numbers of plants. In States with large numbers of plants, survey procedures are designed to obtain monthly reports from all large plants and from a sample of small plants. Monthly estimates are based upon returns from about 70 percent of the plants which account for 70 to 90 percent of the total production of major dairy products.

Revision Policy: Monthly estimates are subject to revision the month following the preliminary estimates. Annual estimates are published in the "**Dairy Products**" report published each April which includes any revisions made to current and previous year. An attempt is made to get information from all plants for preparing these estimates.

The next "Dairy Products" report will be released at 3 p.m. ET on June 3, 2003.

The United States Department of Agriculture (USDA) prohibits discrimination in all its programs on the basis of race, color, national origin, gender, religion, age, disability, political beliefs, sexual orientation, and marital or family status. (Not all prohibited bases apply to all programs.) Persons with disabilities who require alternative means for communication of program information (braille, large print, audiotape, etc.) should contact the USDA's TARGET Center at 202-720-2600 (voice and TDD).

To file a complaint of discrimination, write USDA, Director, Office of Civil Rights, Room 326-W, Whitten Building, 1400 Independence Avenue, SW, Washington, D.C., 20250-9410, or call 202-720-5964 (voice or TDD). USDA is an equal opportunity provider and employer.

ACCESS TO REPORTS!!

For your convenience, there are several ways to obtain NASS reports, data products, and services:

INTERNET ACCESS

All NASS reports are available free of charge on the worldwide Internet. For access, connect to the Internet and go to the NASS Home Page at: <http://www.usda.gov/nass/>. Select "Today's Reports" or Publications and then Reports Calendar or Publications and then Search, by Title or Subject.

E-MAIL SUBSCRIPTION

All NASS reports are available by subscription free of charge direct to your e-mail address. Starting with the NASS Home Page at <http://www.usda.gov/nass/>, click on **Publications**, then click on the **Subscribe by E-mail** button which takes you to the page describing e-mail delivery of reports. Finally, click on **Go to the Subscription Page** and follow the instructions.

AUTOFAX ACCESS

NASSFax service is available for some reports from your fax machine. Please call 202-720-2000, using the handset attached to your fax. Respond to the voice prompts. Document 0411 is a list of available reports.

PRINTED REPORTS OR DATA PRODUCTS

CALL OUR TOLL-FREE ORDER DESK: 800-999-6779 (U.S. and Canada)
Other areas, please call 703-605-6220 FAX: 703-605-6900
(Visa, MasterCard, check, or money order acceptable for payment.)

ASSISTANCE

For **assistance** with general agricultural statistics or further information about NASS or its products or services, contact the **Agricultural Statistics Hotline** at **800-727-9540**, 7:30 a.m. to 4:00 p.m. ET, or e-mail: nass@nass.usda.gov.
