

Released June 3, 2003, by the National Agricultural Statistics Service (NASS), Agricultural Statistics Board, U.S. Department of Agriculture. For information on "Dairy Products" call Kevin Pautler at (202) 720-9168, office hours 7:30 a.m. to 4:00 p.m. ET.

April 2003 Highlights

Total cheese output (excluding cottage cheese) was 722 million pounds, 0.4 percent above April 2002 but 1.8 percent below March 2003.

American type cheese production totaled 310 million pounds, 3.4 percent below April 2002 and 2.8 percent below March 2003.

Butter production was 123 million pounds in April, 6.3 percent below April 2002 and 2.4 percent below March 2003.

Frozen dessert: (comparisons with April 2002)

Ice cream, Regular (hard) --- 79.4 million gallons, down 1.2 percent.

Ice cream, Lowfat (total) --- 37.5 million gallons, up 8.4 percent.

Ice cream, Nonfat (hard) --- 1.90 million gallons, up 12.2 percent.

Sherbet (hard) --- 5.43 million gallons, up 7.5 percent.

Frozen Yogurt (total) --- 6.32 million gallons, down 11.6 percent.

Nonfat dry milk for human food: (compared with April 2002) --- 150 million pounds, down 8.4 percent.

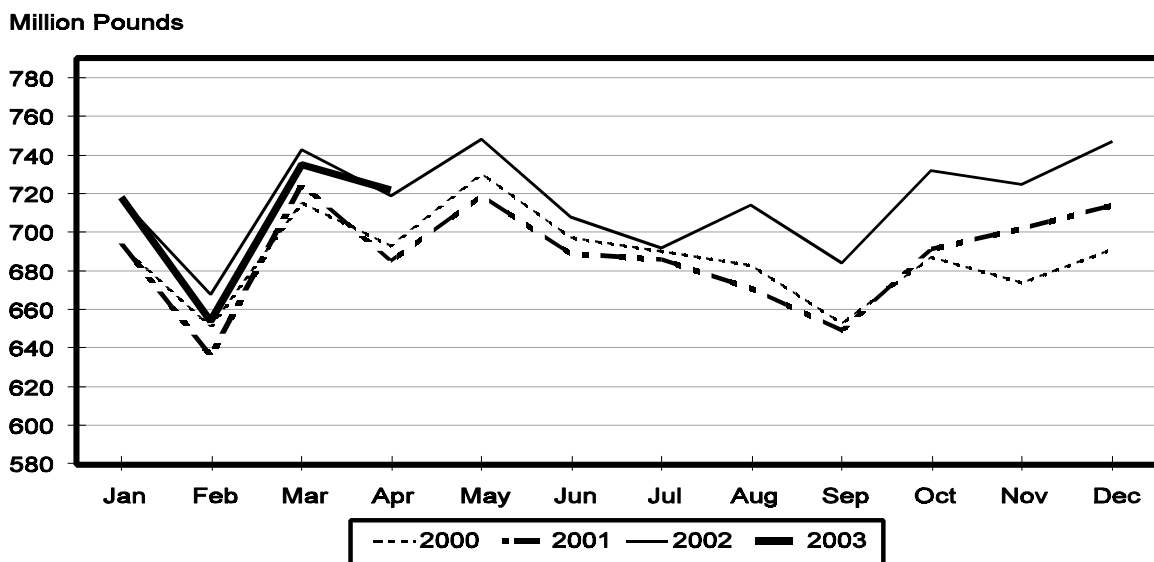
Dry whey products: (comparisons with April 2002)

Dry whey, human --- 89.7 million pounds, up 1.2 percent.

Dry whey, animal --- 5.00 million pounds, down 3.9 percent.

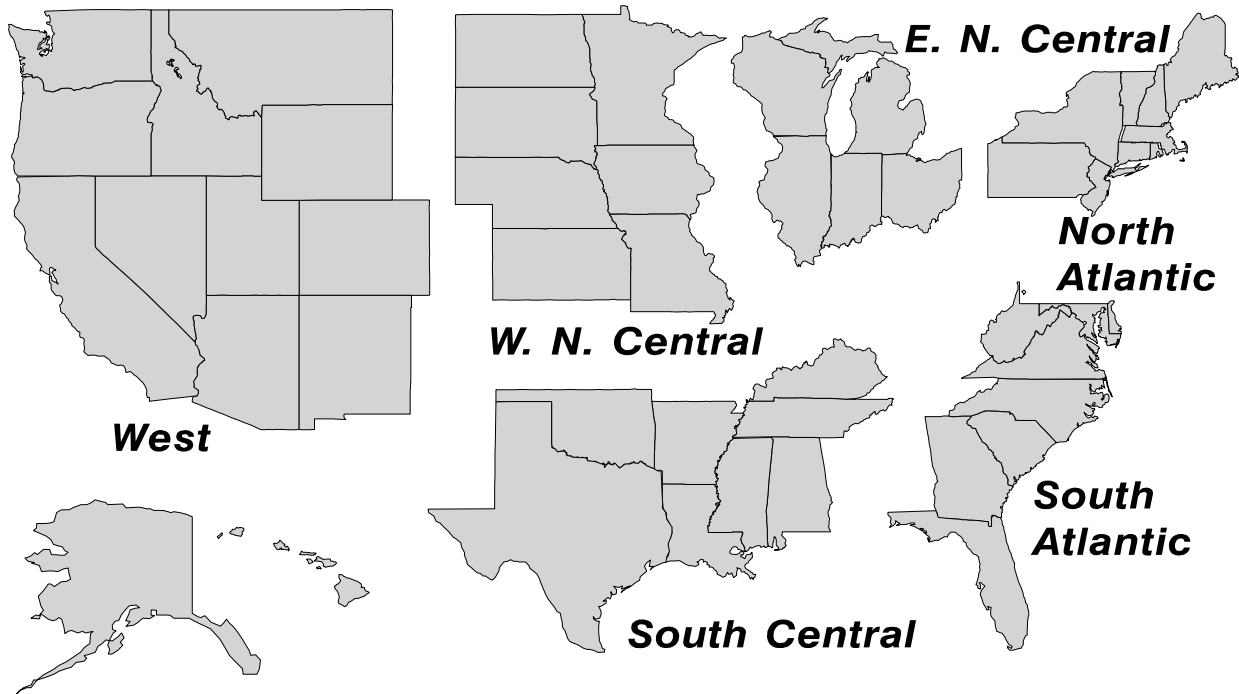
Dry whey, total --- 94.7 million pounds, up 0.9 percent.

Total Cheese Production United States



U. S. Geographic Regions Dairy Products

State totals are not published when fewer than 3 firms have reported or one firm comprises more than 60 percent of the State total. If we are not able to publish a region for confidentiality reasons, it will be combined with other regions when possible. For example, if North Atlantic can not be published, then it will be combined with South Atlantic to publish Atlantic. The West North Central and East North Central will be combined, if necessary, to form North Central. In the event that neither could be published, they may be combined with South Central to publish Central. Some tables will have only limited regions shown, therefore the regions may not add to the United States total.



**Dairy Products: Production by Product,
United States, April, 2002-2003**

Product	Apr 2002	Mar 2003 ¹	Apr 2003	Change From	
				Apr 2002	Mar 2003
	<i>1,000 Pounds</i>	<i>1,000 Pounds</i>	<i>1,000 Pounds</i>	<i>Percent</i>	<i>Percent</i>
Butter	131,605	126,338	123,286	-6.3	-2.4
Cheese					
American Types ²	320,432	318,491	309,567	-3.4	-2.8
Cheddar	253,909	242,232	236,481	-6.9	-2.4
Swiss	20,657	21,349	19,865	-3.8	-7.0
Brick and Muenster	7,012	7,375	7,412	5.7	0.5
Cream and Neufchatel	53,161	54,933	54,741	3.0	-0.3
Hispanic	10,343	11,369	10,843	4.8	-4.6
Mozzarella	231,324	243,230	242,271	4.7	-0.4
Other Italian Types	58,595	62,210	60,601	3.4	-2.6
Total Italian Types	289,919	305,440	302,872	4.5	-0.8
All Other Types	17,707	16,413	17,012	-3.9	3.6
Total	719,231	735,370	722,312	0.4	-1.8
Cottage Cheese, Curd ³	37,342	37,365	39,094	4.7	4.6
Cottage Cheese, Cream ⁴	31,454	31,991	33,580	6.8	5.0
Cottage Cheese, Lowfat ⁵	31,091	32,459	32,895	5.8	1.3
Canned Evaporated and Condensed Whole Milk	49,318	51,696	56,903	15.4	10.1
Dry Whole Milk	2,397	3,381	2,928	22.2	-13.4
Nonfat Dry Milk, Human	164,159	146,276	150,429	-8.4	2.8
Dry Skim Milk, Animal	508	381	502	-1.2	31.8
Dry Buttermilk	5,742	5,688	5,820	1.4	2.3
Sour Cream		51,331	50,123		-2.4
Yogurt, Plain & Flavored	180,476	195,394	182,798	1.3	-6.4
	<i>1,000 Gallons</i>	<i>1,000 Gallons</i>	<i>1,000 Gallons</i>	<i>Percent</i>	<i>Percent</i>
Frozen Products					
Ice Cream, Hard	80,364	73,595	79,382	-1.2	7.9
Ice Cream, Lowfat, Hard	10,297	10,304	10,211	-0.8	-0.9
Ice Cream, Lowfat, Soft	24,267	25,112	27,263	12.3	8.6
Ice Cream, Lowfat, Total	34,564	35,416	37,474	8.4	5.8
Ice Cream, Nonfat, Hard	1,693	1,580	1,900	12.2	20.3
Sherbet, Hard	5,047	5,011	5,426	7.5	8.3
Water and Juice Ices	7,295	5,898	6,742	-7.6	14.3
Frozen Yogurt, Total	7,156	5,794	6,324	-11.6	9.1
Regular & Lowfat, Hard	2,134	1,976	2,152	0.8	8.9
Nonfat, Hard	1,159	987	1,180	1.8	19.6
Other Frozen Dairy Products	784	731	634	-19.1	-13.3
Mix for Frozen Products					
Ice Cream Mix	47,829	44,215	47,827		8.2
Ice Cream, Lowfat, Mix	20,702	19,611	20,777	0.4	5.9
Ice Cream, Nonfat, Mix	1,125	1,207	1,285	14.2	6.5
Sherbet Mix	3,487	3,404	3,688	5.8	8.3
Yogurt Mix	3,777	3,408	3,720	-1.5	9.2

¹ Revised.

² Includes Cheddar, Colby, Monterey, and Jack.

³ Mostly used for processing into cream or lowfat cottage cheese.

⁴ Fat content 4 percent or more.

⁵ Fat content less than 4 percent.

**Whey and Modified Whey Products: Production, Stocks,
and Prices, United States, April, 2002-2003**

Product	Apr 2002	Mar 2003 ¹	Apr 2003	Change From	
				Apr 2002	Mar 2003
Production					
	<i>1,000 Pounds</i>	<i>1,000 Pounds</i>	<i>1,000 Pounds</i>	<i>Percent</i>	<i>Percent</i>
Condensed Whey, Solids Content ²					
Sweet-Type, Human	10,152	9,966	11,459	12.9	15.0
Sweet-Type, Animal ³					
Dry Whey Products					
Dry Whey, Human	88,669	95,811	89,702	1.2	-6.4
Dry Whey, Animal	5,199	5,277	4,995	-3.9	-5.3
Dry Whey, Total	93,868	101,088	94,697	0.9	-6.3
Reduced Lactose and Minerals					
Human Food	8,926	1,993	2,913	-67.4	46.2
Animal Feed	3,521	3,445	3,498	-0.7	1.5
Lactose, Human and Animal	47,844	54,001	55,610	16.2	3.0
Whey					
Solids in Wet Blends, Animal ³	3,169				
Protein Concentrate, Human ⁷	25,166	28,621	28,102	11.7	-1.8
Protein Concentrate, Animal ⁷	3,036	2,959	2,979	-1.9	0.7
Manufacturers' Stocks End-of-Month ⁴					
	<i>1,000 Pounds</i>	<i>1,000 Pounds</i>	<i>1,000 Pounds</i>	<i>Percent</i>	<i>Percent</i>
Dry Whey Products					
Dry Whey, Human	39,356	44,960	45,788	16.3	1.8
Dry Whey, Animal	1,668	1,676	1,411	-15.4	-15.8
Reduced Lactose and Minerals					
Human and Animal ⁵	8,603	10,502	9,990	16.1	-4.9
Lactose, Human and Animal	46,950	44,265	41,659	-11.3	-5.9
Whey Protein Concentrate, Human ⁷	31,826	25,655	28,409	-10.7	10.7
Whey Protein Concentrate, Animal ⁷	1,577	1,767	1,712	8.6	-3.1
Manufacturers' Selling Price ⁶					
	<i>Cents per Pound</i>	<i>Cents per Pound</i>	<i>Cents per Pound</i>	<i>Cents Change</i>	<i>Cents Change</i>
Dry Whey, Animal	17.7	14.2	13.3	-4.4	-0.9

¹ Revised.

² Final marketable product only. Does not include quantity used or shipped to another plant for further processing into dry whey or modified whey products.

³ Not shown when fewer than three plants reported or individual plant operations could be disclosed

⁴ Stocks held by manufacturers at all points and in transit.

⁵ Reduced lactose and minerals stocks combined to avoid disclosure of individual operations.

⁶ Prices for bulk goods, f.o.b. plant. Average monthly prices reported by firms.

⁷ Whey Protein Concentrate, 25.0 to 89.9 percent.

**Dairy Products: Production by Product and Month,
United States, 2002-2003 ¹**

Product and Month	By Month			Cumulative		
	2002	2003	Change From 2002	2002	2003	Change From 2002
	<i>1,000 Pounds</i>	<i>1,000 Pounds</i>	<i>Percent</i>	<i>1,000 Pounds</i>	<i>1,000 Pounds</i>	<i>Percent</i>
Total Cheese ³						
Jan	717,454	717,763		717,454	717,763	
Feb	667,887	653,516	-2.2	1,385,341	1,371,279	-1.0
Mar	742,764	735,370	-1.0	2,128,105	2,106,649	-1.0
Apr	719,231	722,312	0.4	2,847,336	2,828,961	-0.6
May	748,263			3,595,599		
Jun	708,284			4,303,883		
Jul	692,195			4,996,078		
Aug	714,314			5,710,392		
Sep	683,895			6,394,287		
Oct	732,157			7,126,444		
Nov	725,444			7,851,888		
Dec	747,161			8,599,049		
American Cheese						
Jan	317,538	319,517	0.6	317,538	319,517	0.6
Feb	292,857	285,649	-2.5	610,395	605,166	-0.9
Mar	322,054	318,491	-1.1	932,449	923,657	-0.9
Apr	320,432	309,567	-3.4	1,252,881	1,233,224	-1.6
May	329,921			1,582,802		
Jun	313,998			1,896,800		
Jul	305,409			2,202,209		
Aug	309,640			2,511,849		
Sep	287,537			2,799,386		
Oct	297,840			3,097,226		
Nov	294,363			3,391,589		
Dec	317,426			3,709,015		
Cheddar Cheese						
Jan	246,385	247,786	0.6	246,385	247,786	0.6
Feb	227,721	218,823	-3.9	474,106	466,609	-1.6
Mar	253,112	242,232	-4.3	727,218	708,841	-2.5
Apr	253,909	236,481	-6.9	981,127	945,322	-3.6
May	258,360			1,239,487		
Jun	243,222			1,482,709		
Jul	232,613			1,715,322		
Aug	231,669			1,946,991		
Sep	214,095			2,161,086		
Oct	219,119			2,380,205		
Nov	219,669			2,599,874		
Dec	240,203			2,840,077		

See footnote(s) at end of table.

--continued

**Dairy Products: Production by Product and Month,
United States, 2002-2003¹ (continued)**

Product and Month	By Month			Cumulative		
	2002	2003	Change From 2002	2002	2003	Change From 2002
	<i>1,000 Pounds</i>	<i>1,000 Pounds</i>	<i>Percent</i>	<i>1,000 Pounds</i>	<i>1,000 Pounds</i>	<i>Percent</i>
Italian Cheese ³						
Jan	296,654	293,345	-1.1	296,654	293,345	-1.1
Feb	278,013	272,616	-1.9	574,667	565,961	-1.5
Mar	307,324	305,440	-0.6	881,991	871,401	-1.2
Apr	289,919	302,872	4.5	1,171,910	1,174,273	0.2
May	305,072			1,476,982		
Jun	280,388			1,757,370		
Jul	275,506			2,032,876		
Aug	285,840			2,318,716		
Sep	277,883			2,596,599		
Oct	300,818			2,897,417		
Nov	297,400			3,194,817		
Dec	311,661			3,506,478		
Mozzarella ³						
Jan	236,958	232,355	-1.9	236,958	232,355	-1.9
Feb	223,384	218,084	-2.4	460,342	450,439	-2.2
Mar	246,569	243,230	-1.4	706,911	693,669	-1.9
Apr	231,324	242,271	4.7	938,235	935,940	-0.2
May	247,659			1,185,894		
Jun	228,778			1,414,672		
Jul	222,293			1,636,965		
Aug	229,911			1,866,876		
Sep	226,158			2,093,034		
Oct	237,294			2,330,328		
Nov	234,783			2,565,111		
Dec	248,601			2,813,712		
Other Italian						
Jan	59,696	60,990	2.2	59,696	60,990	2.2
Feb	54,629	54,532	-0.2	114,325	115,522	1.0
Mar	60,755	62,210	2.4	175,080	177,732	1.5
Apr	58,595	60,601	3.4	233,675	238,333	2.0
May	57,413			291,088		
Jun	51,610			342,698		
Jul	53,213			395,911		
Aug	55,929			451,840		
Sep	51,725			503,565		
Oct	63,524			567,089		
Nov	62,617			629,706		
Dec	63,060			692,766		

See footnote(s) at end of table.

--continued

**Dairy Products: Production by Product and Month,
United States, 2002-2003 ¹ (continued)**

Product and Month	By Month			Cumulative		
	2002	2003	Change From 2002	2002	2003	Change From 2002
	<i>1,000 Pounds</i>	<i>1,000 Pounds</i>	<i>Percent</i>	<i>1,000 Pounds</i>	<i>1,000 Pounds</i>	<i>Percent</i>
Butter						
Jan	140,069	141,440	1.0	140,069	141,440	1.0
Feb	124,231	128,362	3.3	264,300	269,802	2.1
Mar	127,695	126,338	-1.1	391,995	396,140	1.1
Apr	131,605	123,286	-6.3	523,600	519,426	-0.8
May	125,484			649,084		
Jun	95,818			744,902		
Jul	94,409			839,311		
Aug	88,883			928,194		
Sep	92,818			1,021,012		
Oct	102,613			1,123,625		
Nov	103,932			1,227,557		
Dec	127,591			1,355,148		
Nonfat Dry Milk, Human						
Jan	128,675	133,758	4.0	128,675	133,758	4.0
Feb	127,707	130,355	2.1	256,382	264,113	3.0
Mar	153,057	146,276	-4.4	409,439	410,389	0.2
Apr	164,159	150,429	-8.4	573,598	560,818	-2.2
May	163,379			736,977		
Jun	152,982			889,959		
Jul	129,071			1,019,030		
Aug	117,870			1,136,900		
Sep	97,191			1,234,091		
Oct	103,357			1,337,448		
Nov	99,049			1,436,497		
Dec	132,494			1,568,991		
Total Dry Whey ²						
Jan	90,071	97,664	8.4	90,071	97,664	8.4
Feb	84,430	88,712	5.1	174,501	186,376	6.8
Mar	96,405	101,088	4.9	270,906	287,464	6.1
Apr	93,868	94,697	0.9	364,774	382,161	4.8
May	98,417			463,191		
Jun	93,720			556,911		
Jul	92,358			649,269		
Aug	93,820			743,089		
Sep	89,639			832,728		
Oct	93,177			925,905		
Nov	91,599			1,017,504		
Dec	98,268			1,115,772		

See footnote(s) at end of table.

--continued

**Dairy Products: Production by Product and Month,
United States, 2002-2003¹ (continued)**

Product and Month	By Month			Cumulative		
	2002	2003	Change From 2002	2002	2003	Change From 2002
	<i>1,000 Pounds</i>	<i>1,000 Pounds</i>	<i>Percent</i>	<i>1,000 Pounds</i>	<i>1,000 Pounds</i>	<i>Percent</i>
Cream Cottage Cheese						
Jan	30,045	31,386	4.5	30,045	31,386	4.5
Feb	29,034	29,155	0.4	59,079	60,541	2.5
Mar	31,607	31,991	1.2	90,686	92,532	2.0
Apr	31,454	33,580	6.8	122,140	126,112	3.3
May	32,966			155,106		
Jun	30,787			185,893		
Jul	32,588			218,481		
Aug	33,753			252,234		
Sep	31,945			284,179		
Oct	31,876			316,055		
Nov	27,764			343,819		
Dec	28,580			372,399		
Lowfat Cottage Cheese						
Jan	29,525	30,397	3.0	29,525	30,397	3.0
Feb	29,344	29,345		58,869	59,742	1.5
Mar	31,999	32,459	1.4	90,868	92,201	1.5
Apr	31,091	32,895	5.8	121,959	125,096	2.6
May	34,658			156,617		
Jun	29,266			185,883		
Jul	34,105			219,988		
Aug	34,778			254,766		
Sep	31,505			286,271		
Oct	32,349			318,620		
Nov	27,292			345,912		
Dec	28,384			374,296		
	<i>1,000 Gallons</i>	<i>1,000 Gallons</i>	<i>Percent</i>	<i>1,000 Gallons</i>	<i>1,000 Gallons</i>	<i>Percent</i>
Ice Cream, Hard						
Jan	69,696	67,337	-3.4	69,696	67,337	-3.4
Feb	69,293	70,615	1.9	138,989	137,952	-0.7
Mar	75,823	73,595	-2.9	214,812	211,547	-1.5
Apr	80,364	79,382	-1.2	295,176	290,929	-1.4
May	77,609			372,785		
Jun	80,779			453,564		
Jul	82,999			536,563		
Aug	77,896			614,459		
Sep	69,894			684,353		
Oct	70,501			754,854		
Nov	57,374			812,228		
Dec	53,903			866,131		

See footnote(s) at end of table.

--continued

**Dairy Products: Production by Product and Month,
United States, 2002-2003¹ (continued)**

Product and Month	By Month			Cumulative		
	2002	2003	Change From 2002	2002	2003	Change From 2002
	<i>1,000 Gallons</i>	<i>1,000 Gallons</i>	<i>Percent</i>	<i>1,000 Gallons</i>	<i>1,000 Gallons</i>	<i>Percent</i>
Ice Cream, Lowfat						
Jan	23,520	25,274	7.5	23,520	25,274	7.5
Feb	25,096	25,853	3.0	48,616	51,127	5.2
Mar	30,861	35,416	14.8	79,477	86,543	8.9
Apr	34,564	37,474	8.4	114,041	124,017	8.7
May	37,863			151,904		
Jun	37,347			189,251		
Jul	36,211			225,462		
Aug	34,033			259,495		
Sep	28,540			288,035		
Oct	27,696			315,731		
Nov	22,428			338,159		
Dec	23,428			361,587		
Ice Cream, NF, Hard						
Jan	1,665	1,584	-4.9	1,665	1,584	-4.9
Feb	1,350	1,689	25.1	3,015	3,273	8.6
Mar	1,858	1,580	-15.0	4,873	4,853	-0.4
Apr	1,693	1,900	12.2	6,566	6,753	2.8
May	1,566			8,132		
Jun	1,483			9,615		
Jul	1,546			11,161		
Aug	1,534			12,695		
Sep	1,423			14,118		
Oct	1,572			15,690		
Nov	1,451			17,141		
Dec	1,250			18,391		
Sherbet, Hard						
Jan	3,731	4,056	8.7	3,731	4,056	8.7
Feb	3,904	4,406	12.9	7,635	8,462	10.8
Mar	4,775	5,011	4.9	12,410	13,473	8.6
Apr	5,047	5,426	7.5	17,457	18,899	8.3
May	5,250			22,707		
Jun	5,225			27,932		
Jul	5,478			33,410		
Aug	4,629			38,039		
Sep	4,124			42,163		
Oct	4,058			46,221		
Nov	2,934			49,155		
Dec	3,189			52,344		

See footnote(s) at end of table.

--continued

**Dairy Products: Production by Product and Month,
United States, 2002-2003¹ (continued)**

Product and Month	By Month			Cumulative		
	2002	2003	Change From 2002	2002	2003	Change From 2002
	<i>1,000 Gallons</i>	<i>1,000 Gallons</i>	<i>Percent</i>	<i>1,000 Gallons</i>	<i>1,000 Gallons</i>	<i>Percent</i>
Frozen Yogurt						
Jan	5,715	5,719	0.1	5,715	5,719	0.1
Feb	6,012	5,505	-8.4	11,727	11,224	-4.3
Mar	6,696	5,794	-13.5	18,423	17,018	-7.6
Apr	7,156	6,324	-11.6	25,579	23,342	-8.7
May	6,932			32,511		
Jun	6,498			39,009		
Jul	6,722			45,731		
Aug	6,619			52,350		
Sep	6,046			58,396		
Oct	5,842			64,238		
Nov	4,937			69,175		
Dec	4,231			73,406		

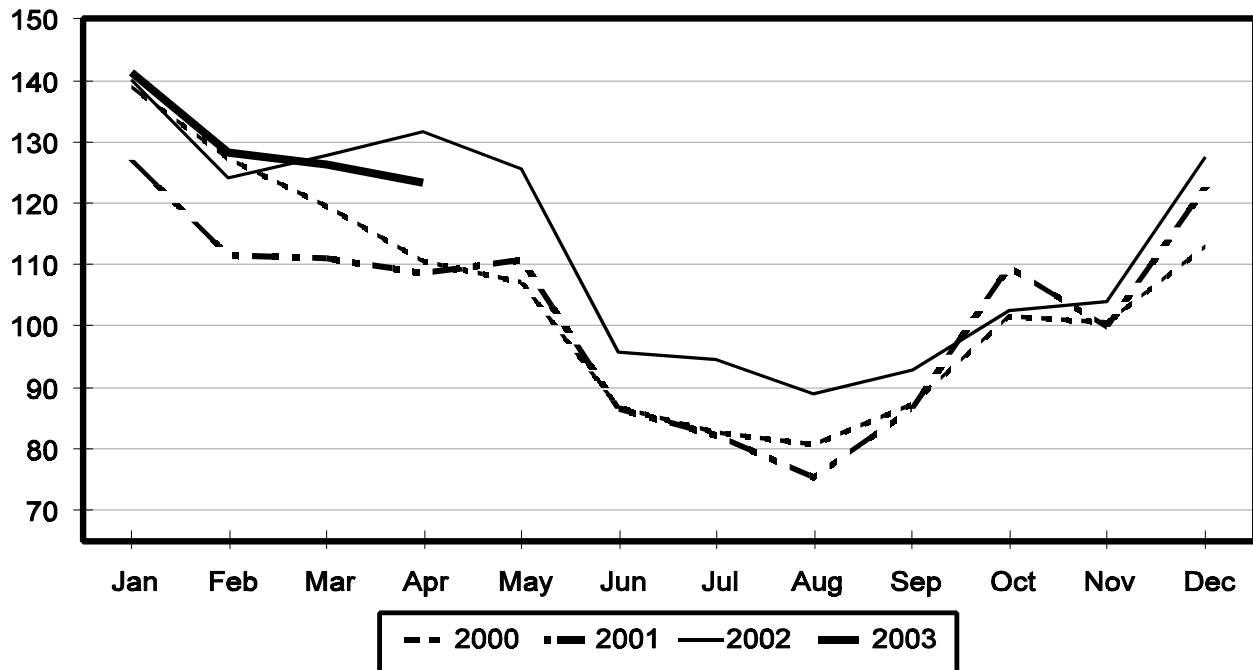
¹ March 2003 data revised.

² Excludes all modified dry whey products.

³ Preliminary revisions for Mozzarella cheese for January through September 2002. Revisions to Mozzarella cheese are reflected in Italian cheese and Total cheese numbers. Annual revisions will be published in April 2003.

Total Butter Production United States

Million Pounds



**Total Cheese, Excluding Cottage Cheese: Production by
State and United States, April 2002-2003**

State	Apr 2002	Mar ¹ 2003	Apr 2003	Change From	
				Apr 2002	Mar 2003
	<i>1,000 Pounds</i>	<i>1,000 Pounds</i>	<i>1,000 Pounds</i>	<i>Percent</i>	<i>Percent</i>
CA	142,218	149,682	151,252	6.4	1.0
ID	49,326	52,927	51,758	4.9	-2.2
IL	7,542	8,606	6,861	-9.0	-20.3
IA	24,269	23,745	22,077	-9.0	-7.0
MA	60	80	74	23.3	-7.5
MN	53,631	56,885	54,063	0.8	-5.0
MO	6,942	8,336	7,623	9.8	-8.6
NY	57,851	61,420	58,956	1.9	-4.0
OH	13,695	14,135	13,191	-3.7	-6.7
PA	33,757	31,652	33,790	0.1	6.8
SD	12,642	13,294	12,888	1.9	-3.1
UT	6,180	5,658	5,870	-5.0	3.7
WA	12,666				
WI	188,104	185,085	182,002	-3.2	-1.7
Oth Sts ²	110,348	123,865	121,907	10.5	-1.6
US	719,231	735,370	722,312	0.4	-1.8
N Atlantic	110,193	108,013	108,321	-1.7	0.3
S Atlantic	4,167	3,224	4,007	-3.8	24.3
E N Central	223,271	222,968	216,629	-3.0	-2.8
W N Central	106,209	109,431	103,826	-2.2	-5.1
S Central	4,968	8,306	7,142	43.8	-14.0
West	270,423	283,428	282,387	4.4	-0.4

¹ Revised.

² States not shown when fewer than 3 plants reported or individual plant operations could be disclosed. Percent change shown only when comparable States are included in the calculation.

American Cheese: Production by State and United States, April 2002-2003

State	Apr 2002	Mar ¹ 2003	Apr 2003	Change From	
				Apr 2002	Mar 2003
	<i>1,000 Pounds</i>	<i>1,000 Pounds</i>	<i>1,000 Pounds</i>	<i>Percent</i>	<i>Percent</i>
CA	67,464	70,978	68,018	0.8	-4.2
ID	41,736	38,511	38,541	-7.7	0.1
IA	12,175	12,383	12,094	-0.7	-2.3
MN	51,420	55,653	52,063	1.3	-6.5
NY	8,996	8,005	9,578	6.5	19.7
OH	3,449	2,943	2,912	-15.6	-1.1
OR	6,959	8,440	8,155	17.2	-3.4
SD	6,294	6,759	6,553	4.1	-3.0
WA	12,556				
WI	74,354	68,400	66,600	-10.4	-2.6
Oth Sts ²	35,029	46,419	45,053	28.6	-2.9
US	320,432	318,491	309,567	-3.4	-2.8
Atlantic	14,933	12,080	15,291	2.4	26.6
E N Central	79,026	72,592	70,735	-10.5	-2.6
W N Central	71,781	75,797	71,706	-0.1	-5.4
S Central	4,364	5,523	4,372	0.2	-20.8
West	150,328	152,499	147,463	-1.9	-3.3

¹ Revised.

² States not shown when fewer than 3 plants reported or individual plant operations could be disclosed. Percent change shown only when comparable States are included in the calculation.

Cheddar Cheese: Production by State and United States, April 2002-2003

State	Apr 2002	Mar ¹ 2003	Apr 2003	Change From	
				Apr 2002	Mar 2003
	<i>1,000 Pounds</i>	<i>1,000 Pounds</i>	<i>1,000 Pounds</i>	<i>Percent</i>	<i>Percent</i>
CA	50,412	47,667	46,101	-8.6	-3.3
ID	20,211	17,162	17,590	-13.0	2.5
MN	48,579	52,200	49,063	1.0	-6.0
NY	8,923	7,900	9,496	6.4	20.2
SD	4,749	4,332	4,648	-2.1	7.3
WA	10,216				
WI	61,965	55,600	54,300	-12.4	-2.3
Oth Sts ²	48,854	57,371	55,283	13.2	-3.6
US	253,909	242,232	236,481	-6.9	-2.4
Atlantic	14,655	11,272	14,559	-0.7	29.2
E N Cen	64,727	58,030	56,442	-12.8	-2.7
W N Cen	62,333	64,380	61,317	-1.6	-4.8
S Cen	4,348	5,523	4,372	0.6	-20.8
West	107,846	103,027	99,791	-7.5	-3.1

¹ Revised.

² States not shown when fewer than 3 plants reported or individual plant operations could be disclosed. Percent change shown only when comparable States are included in the calculation.

Mozzarella Cheese: Production by State and United States, April 2002-2003

State	Apr 2002	Mar ¹ 2003	Apr 2003	Change From	
				Apr 2002	Mar 2003
	<i>1,000 Pounds</i>	<i>1,000 Pounds</i>	<i>1,000 Pounds</i>	<i>Percent</i>	<i>Percent</i>
CA	54,956	61,058	65,083	18.4	6.6
NY	17,211	17,368	16,466	-4.3	-5.2
PA	19,088	17,211	18,521	-3.0	7.6
WI	63,635	64,600	62,200	-2.3	-3.7
Oth Sts ²	76,434	82,993	80,001	4.7	-3.6
US	231,324	243,230	242,271	4.7	-0.4
Atlantic ³	46,470	43,300	43,110	-7.2	-0.4
E N Central	76,403	78,550	75,635	-1.0	-3.7
West	93,220	103,625	106,872	14.6	3.1

¹ Revised.

² States not shown when fewer than 3 plants reported or individual plant operations could be disclosed. Percent change shown only when comparable States are included in the calculation.

³ Region totals may not add to U.S. when compiled regions could not be disclosed.

Butter: Production by State and United States, April 2002-2003

State	Apr 2002	Mar ¹ 2003	Apr 2003	Change From	
				Apr 2002	Mar 2003
	<i>1,000 Pounds</i>	<i>1,000 Pounds</i>	<i>1,000 Pounds</i>	<i>Percent</i>	<i>Percent</i>
CA	35,024	34,791	34,843	-0.5	0.1
NY	3,089	2,338	2,135	-30.9	-8.7
PA	8,856	6,698	7,648	-13.6	14.2
WA	9,298				
WI	33,452	31,700	29,600	-11.5	-6.6
Oth Sts ²	41,886	50,811	49,060	17.1	-3.4
US	131,605	126,338	123,286	-6.3	-2.4
N Atlantic ³	16,296	13,145	14,093	-13.5	7.2
E N Central	37,377	35,504	33,440	-10.5	-5.8
W N Central	11,730	10,365	9,980	-14.9	-3.7
West	50,576	50,616	51,168	1.2	1.1

¹ Revised.

² States not shown when fewer than 3 plants reported or individual plant operations could be disclosed. Percent change shown only when comparable States are included in the calculation.

³ Region totals may not add to U.S. when compiled regions could not be disclosed.

**Nonfat Dry Milk, Human: Production by State
and United States, April 2002-2003**

State	Apr 2002	Mar ¹ 2003	Apr 2003	Change From	
				Apr 2002	Mar 2003
	<i>1,000 Pounds</i>	<i>1,000 Pounds</i>	<i>1,000 Pounds</i>	<i>Percent</i>	<i>Percent</i>
CA	73,156	68,263	68,206	-6.8	-0.1
ID	9,099	6,362	5,423	-40.4	-14.8
WA	17,224				
Oth Sts ²	64,680	71,651	76,800	18.7	7.2
US	164,159	146,276	150,429	-8.4	2.8
Atlantic	24,464	16,612	21,528	-12.0	29.6
E N Central	5,253	4,633	4,707	-10.4	1.6
W N Central	7,787	6,860	6,856	-12.0	-0.1
S Central	9,887	7,603	7,673	-22.4	0.9
West	116,768	110,568	109,665	-6.1	-0.8

¹ Revised.

² States not shown when fewer than 3 plants reported or individual plant operations could be disclosed. Percent change shown only when comparable States are included in the calculation.

**Dry Whey, Human: Production by State
and United States, April 2002-2003**

State	Apr 2002	Mar ¹ 2003	Apr 2003	Change From	
				Apr 2002	Mar 2003
	<i>1,000 Pounds</i>	<i>1,000 Pounds</i>	<i>1,000 Pounds</i>	<i>Percent</i>	<i>Percent</i>
CA	11,706	11,708	10,754	-8.1	-8.1
MN	7,015	7,891	7,230	3.1	-8.4
NY	10,573	9,423	9,647	-8.8	2.4
PA	9,774	10,978	11,411	16.7	3.9
WA	8,183				
WI	25,232	30,874	26,600	5.4	-13.8
Oth Sts ²	16,186	24,937	24,060	48.6	-3.5
US	88,669	95,811	89,702	1.2	-6.4
Atlantic	20,347	20,401	21,058	3.5	3.2
Central	43,677	49,786	45,022	3.1	-9.6
West	24,645	25,624	23,622	-4.2	-7.8

¹ Revised.

² States not shown when fewer than 3 plants reported or individual plant operations could be disclosed. Percent change shown only when comparable States are included in the calculation.

Ice Cream, Hard: Production by State and United States, April 2002-2003

State	Apr 2002	Mar ¹ 2003	Apr 2003	Change From	
				Apr 2002	Mar 2003
	<i>1,000 Gallons</i>	<i>1,000 Gallons</i>	<i>1,000 Gallons</i>	<i>Percent</i>	<i>Percent</i>
CA	11,540	10,746	10,955	-5.1	1.9
FL	1,774	1,600	1,800	1.5	12.5
IL	2,297	3,179	3,099	34.9	-2.5
IN	7,825	7,613	6,765	-13.5	-11.1
MD	2,126	1,806	1,923	-9.5	6.5
MA	6,659	5,143	6,759	1.5	31.4
MI	1,894	1,565	1,572	-17.0	0.4
MN	3,494	4,172	3,434	-1.7	-17.7
MO	1,555	1,884	2,005	28.9	6.4
NY	2,955	3,100	3,200	8.3	3.2
NC	1,715	1,367	1,449	-15.5	6.0
OH	2,765	2,751	2,969	7.4	7.9
OR	1,123	950	1,150	2.4	21.1
PA	3,487	3,637	4,016	15.2	10.4
SD	3	2	3		50.0
TN	1,773	1,535	1,497	-15.6	-2.5
TX	4,024	3,629	4,276	6.3	17.8
UT	1,215	1,220	1,489	22.6	22.0
WA	1,215	975	1,594	31.2	63.5
Oth Sts ²	20,925	16,721	19,427	-7.2	16.2
US	80,364	73,595	79,382	-1.2	7.9
N Atlantic	15,855	14,613	16,427	3.6	12.4
S Atlantic	7,038	6,309	6,930	-1.5	9.8
E N Central	15,663	16,037	15,343	-2.0	-4.3
W N Central	13,978	11,887	13,427	-3.9	13.0
S Central	9,770	8,689	9,408	-3.7	8.3
West	18,060	16,060	17,847	-1.2	11.1

¹ Revised.

² States not shown when fewer than 3 plants reported or individual plant operations could be disclosed. Percent change shown only when comparable States are included in the calculation.

**Canned Milk and Dry Milk Products: Manufacturers' Shipments,
Stocks, and Selling Prices, April, 2002-2003**

Product	Apr 2002	Mar 2003 ¹	Apr 2003	Change From	
				Apr 2002	Mar 2003
	Manufacturers' Shipments ²				
	<i>1,000 Pounds</i>	<i>1,000 Pounds</i>	<i>1,000 Pounds</i>	<i>Percent</i>	<i>Percent</i>
Nonfat Dry Milk, Human	178,746	148,742	171,539	-4.0	15.3
	Manufacturers' Stocks End-of-Month ³				
	<i>1,000 Pounds</i>	<i>1,000 Pounds</i>	<i>1,000 Pounds</i>	<i>Percent</i>	<i>Percent</i>
Canned Evaporated and Condensed Whole Milk	48,809	52,699	58,954	20.8	11.9
Nonfat Dry Milk, Human	164,087	136,666	149,468	-8.9	9.4
Dry Buttermilk, Total	12,383	12,195	12,025	-2.9	-1.4

¹ Revised.

² For dry products, shipments of bulk goods only.

³ Stocks held by manufacturers at all points and in transit.

Procedures and Reliability: Estimates included in this report are based on data provided each month by manufacturers of these products. In 32 States, the State Departments of Agriculture assist in collection of data, which eliminates duplicate reporting and reduces respondent burden. Data are collected by mail, personal and telephone interviews following the close of each month. There were 1,153 manufacturers that made one or more products in 2002. Each month, reports are generally received from all dairy plants in States with small numbers of plants. In States with large numbers of plants, survey procedures are designed to obtain monthly reports from all large plants and from a sample of small plants. Monthly estimates are based upon returns from about 70 percent of the plants which account for 70 to 90 percent of the total production of major dairy products.

Revision Policy: Monthly estimates are subject to revision the month following the preliminary estimates. Annual estimates are published in the "**Dairy Products**" report published each April which includes any revisions made to current and previous year. An attempt is made to get information from all plants for preparing these estimates.

The next "Dairy Products" report will be released at 3 p.m. ET on July 3, 2003.

The United States Department of Agriculture (USDA) prohibits discrimination in all its programs on the basis of race, color, national origin, gender, religion, age, disability, political beliefs, sexual orientation, and marital or family status. (Not all prohibited bases apply to all programs.) Persons with disabilities who require alternative means for communication of program information (braille, large print, audiotape, etc.) should contact the USDA's TARGET Center at 202-720-2600 (voice and TDD).

To file a complaint of discrimination, write USDA, Director, Office of Civil Rights, Room 326-W, Whitten Building, 1400 Independence Avenue, SW, Washington, D.C., 20250-9410, or call 202-720-5964 (voice or TDD). USDA is an equal opportunity provider and employer.

ACCESS TO REPORTS!!

For your convenience, there are several ways to obtain NASS reports, data products, and services:

INTERNET ACCESS

All NASS reports are available free of charge on the worldwide Internet. For access, connect to the Internet and go to the NASS Home Page at: <http://www.usda.gov/nass/>. Select "Today's Reports" or Publications and then Reports Calendar or Publications and then Search, by Title or Subject.

E-MAIL SUBSCRIPTION

All NASS reports are available by subscription free of charge direct to your e-mail address. Starting with the NASS Home Page at <http://www.usda.gov/nass/>, click on **Publications**, then click on the **Subscribe by E-mail** button which takes you to the page describing e-mail delivery of reports. Finally, click on **Go to the Subscription Page** and follow the instructions.

AUTOFAX ACCESS

NASSFax service is available for some reports from your fax machine. Please call 202-720-2000, using the handset attached to your fax. Respond to the voice prompts. Document 0411 is a list of available reports.

PRINTED REPORTS OR DATA PRODUCTS

CALL OUR TOLL-FREE ORDER DESK: 800-999-6779 (U.S. and Canada)
Other areas, please call 703-605-6220 FAX: 703-605-6900
(Visa, MasterCard, check, or money order acceptable for payment.)

ASSISTANCE

For **assistance** with general agricultural statistics or further information about NASS or its products or services, contact the **Agricultural Statistics Hotline** at **800-727-9540**, 7:30 a.m. to 4:00 p.m. ET, or e-mail: nass@nass.usda.gov.
