

Released July 3, 2003, by the National Agricultural Statistics Service (NASS), Agricultural Statistics Board, U.S. Department of Agriculture. For information on "Dairy Products" call Kevin Pautler at (202) 720-9168, office hours 7:30 a.m. to 4:00 p.m. ET.

May 2003 Highlights

Total cheese output (excluding cottage cheese) was 740 million pounds, 1.1 percent below May 2002 but 2.6 percent above April 2003.

American type cheese production totaled 319 million pounds, 3.3 percent below May 2002 but 3.4 percent above April 2003.

Butter production was 115 million pounds in May, 8.7 percent below May 2002 and 6.6 percent below April 2003.

Frozen dessert: (comparisons with May 2002)

Ice cream, Regular (hard) --- 78.7 million gallons, up 1.4 percent.

Ice cream, Lowfat (total) --- 40.4 million gallons, up 6.6 percent.

Ice cream, Nonfat (hard) --- 1.88 million gallons, up 19.7 percent.

Sherbet (hard) --- 5.31 million gallons, up 1.2 percent.

Frozen Yogurt (total) --- 6.50 million gallons, down 6.2 percent.

Nonfat dry milk for human food: (compared with May 2002) --- 154 million pounds, down 5.5 percent.

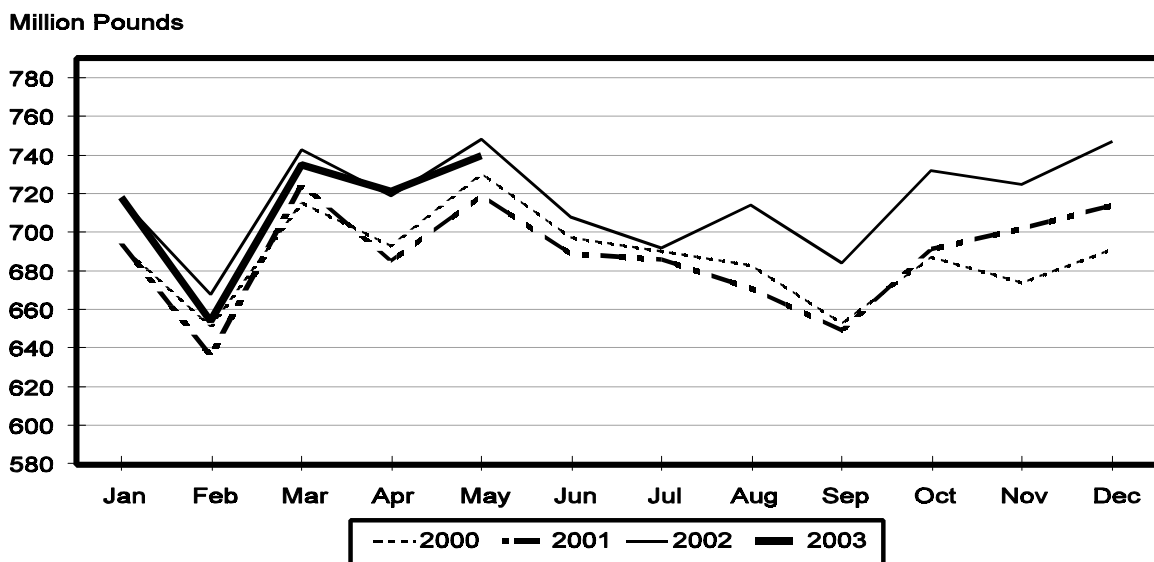
Dry whey products: (comparisons with May 2002)

Dry whey, human --- 95.2 million pounds, up 2.7 percent.

Dry whey, animal --- 4.80 million pounds, down 15.7 percent.

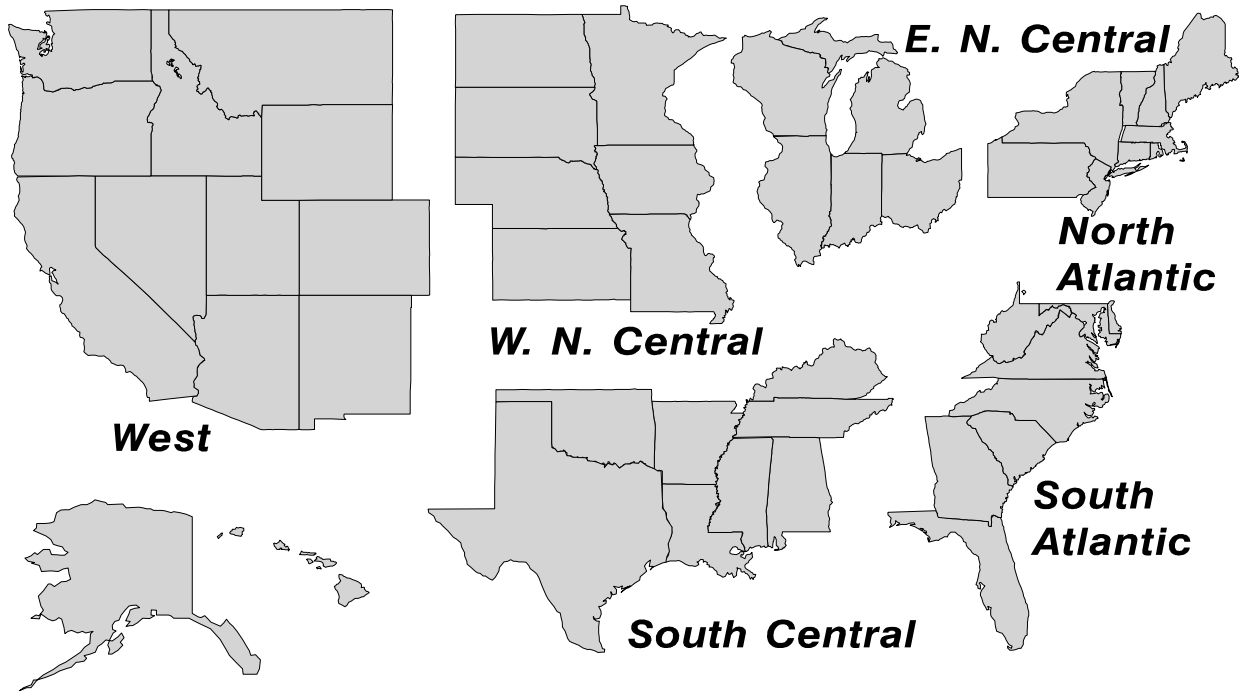
Dry whey, total --- 100 million pounds, up 1.6 percent.

Total Cheese Production United States



U. S. Geographic Regions Dairy Products

State totals are not published when fewer than 3 firms have reported or one firm comprises more than 60 percent of the State total. If we are not able to publish a region for confidentiality reasons, it will be combined with other regions when possible. For example, if North Atlantic can not be published, then it will be combined with South Atlantic to publish Atlantic. The West North Central and East North Central will be combined, if necessary, to form North Central. In the event that neither could be published, they may be combined with South Central to publish Central. Some tables will have only limited regions shown, therefore the regions may not add to the United States total.



**Dairy Products: Production by Product,
United States, May, 2002-2003**

Product	May 2002	Apr 2003 ¹	May 2003	Change From	
				May 2002	Apr 2003
	<i>1,000 Pounds</i>	<i>1,000 Pounds</i>	<i>1,000 Pounds</i>	<i>Percent</i>	<i>Percent</i>
Butter	125,484	122,715	114,629	-8.7	-6.6
Cheese					
American Types ²	329,921	308,599	319,146	-3.3	3.4
Cheddar	258,360	234,713	240,099	-7.1	2.3
Swiss	21,433	19,878	22,257	3.8	12.0
Brick and Muenster	7,888	7,456	8,077	2.4	8.3
Cream and Neufchatel	54,527	54,678	55,967	2.6	2.4
Hispanic	10,350	11,000	10,399	0.5	-5.5
Mozzarella	247,659	242,905	251,253	1.5	3.4
Other Italian Types	57,413	60,467	55,626	-3.1	-8.0
Total Italian Types	305,072	303,372	306,879	0.6	1.2
All Other Types	19,072	16,455	17,289	-9.3	5.1
Total	748,263	721,438	740,014	-1.1	2.6
Cottage Cheese, Curd ³	39,560	39,423	37,632	-4.9	-4.5
Cottage Cheese, Cream ⁴	32,966	33,949	32,798	-0.5	-3.4
Cottage Cheese, Lowfat ⁵	34,658	33,234	33,280	-4.0	0.1
Canned Evaporated and Condensed Whole Milk	53,903	56,903	61,428	14.0	8.0
Dry Whole Milk	3,805	3,094	1,864	-51.0	-39.8
Nonfat Dry Milk, Human	163,379	150,404	154,324	-5.5	2.6
Dry Skim Milk, Animal	764	473	471	-38.4	-0.4
Dry Buttermilk	5,716	5,881	5,128	-10.3	-12.8
Sour Cream ⁶		78,476	76,852		-2.1
Yogurt, Plain & Flavored	186,576	183,319	182,127	-2.4	-0.7
	<i>1,000 Gallons</i>	<i>1,000 Gallons</i>	<i>1,000 Gallons</i>	<i>Percent</i>	<i>Percent</i>
Frozen Products					
Ice Cream, Hard	77,609	79,402	78,716	1.4	-0.9
Ice Cream, Lowfat, Hard	11,235	10,238	9,895	-11.9	-3.4
Ice Cream, Lowfat, Soft	26,628	27,319	30,467	14.4	11.5
Ice Cream, Lowfat, Total	37,863	37,557	40,362	6.6	7.5
Ice Cream, Nonfat, Hard	1,566	1,908	1,875	19.7	-1.7
Sherbet, Hard	5,250	5,438	5,312	1.2	-2.3
Water and Juice Ices	7,093	6,795	6,836	-3.6	0.6
Frozen Yogurt, Total	6,932	6,370	6,501	-6.2	2.1
Regular & Lowfat, Hard	2,411	2,155	2,016	-16.4	-6.5
Nonfat, Hard	1,056	1,180	1,217	15.2	3.1
Other Frozen Dairy Products	902	634	811	-10.1	27.9
Mix for Frozen Products					
Ice Cream Mix	46,465	48,187	48,481	4.3	0.6
Ice Cream, Lowfat, Mix	22,562	20,823	22,421	-0.6	7.7
Ice Cream, Nonfat, Mix	1,090	1,290	1,457	33.7	12.9
Sherbet Mix	3,675	3,714	3,721	1.3	0.2
Yogurt Mix	4,159	3,747	3,824	-8.1	2.1

¹ Revised.

² Includes Cheddar, Colby, Monterey, and Jack.

³ Mostly used for processing into cream or lowfat cottage cheese.

⁴ Fat content 4 percent or more.

⁵ Fat content less than 4 percent.

⁶ Corrected totals due to errors in reporting unit: January 76,716; February 64,282; and March 75,689 million pounds.

**Whey and Modified Whey Products: Production, Stocks,
and Prices, United States, May, 2002-2003**

Product	May 2002	Apr 2003 ¹	May 2003	Change From	
				May 2002	Apr 2003
Production					
	<i>1,000 Pounds</i>	<i>1,000 Pounds</i>	<i>1,000 Pounds</i>	<i>Percent</i>	<i>Percent</i>
Condensed Whey, Solids Content ²					
Sweet-Type, Human	9,736	9,389	10,155	4.3	8.2
Sweet-Type, Animal ³					
Dry Whey Products					
Dry Whey, Human	92,720	90,171	95,240	2.7	5.6
Dry Whey, Animal	5,697	4,863	4,800	-15.7	-1.3
Dry Whey, Total	98,417	95,034	100,040	1.6	5.3
Reduced Lactose and Minerals					
Human Food	9,541	2,998	3,092	-67.6	3.1
Animal Feed	3,735	3,498	3,585	-4.0	2.5
Lactose, Human and Animal	47,754	53,756	53,374	11.8	-0.7
Whey					
Solids in Wet Blends, Animal ³	2,709				
Protein Concentrate, Human ⁷	26,099	28,053	27,962	7.1	-0.3
Protein Concentrate, Animal ⁷	3,247	2,979	3,274	0.8	9.9
Manufacturers' Stocks End-of-Month ⁴					
	<i>1,000 Pounds</i>	<i>1,000 Pounds</i>	<i>1,000 Pounds</i>	<i>Percent</i>	<i>Percent</i>
Dry Whey Products					
Dry Whey, Human	35,580	46,191	44,945	26.3	-2.7
Dry Whey, Animal	1,578	1,619	2,546	61.3	57.3
Reduced Lactose and Minerals					
Human and Animal ⁵	9,875	9,991	10,082	2.1	0.9
Lactose, Human and Animal	45,300	41,456	42,223	-6.8	1.9
Whey Protein Concentrate, Human ⁷	30,582	28,486	30,968	1.3	8.7
Whey Protein Concentrate, Animal ⁷	1,592	1,712	1,618	1.6	-5.5
Manufacturers' Selling Price ⁶					
	<i>Cents per Pound</i>	<i>Cents per Pound</i>	<i>Cents per Pound</i>	<i>Cents Change</i>	<i>Cents Change</i>
Dry Whey, Animal	16.0	13.6	13.2	-2.8	-0.4

¹ Revised.

² Final marketable product only. Does not include quantity used or shipped to another plant for further processing into dry whey or modified whey products.

³ Not shown when fewer than three plants reported or individual plant operations could be disclosed

⁴ Stocks held by manufacturers at all points and in transit.

⁵ Reduced lactose and minerals stocks combined to avoid disclosure of individual operations.

⁶ Prices for bulk goods, f.o.b. plant. Average monthly prices reported by firms.

⁷ Whey Protein Concentrate, 25.0 to 89.9 percent.

**Dairy Products: Production by Product and Month,
United States, 2002-2003 ¹**

Product and Month	By Month			Cumulative		
	2002	2003	Change From 2002	2002	2003	Change From 2002
	<i>1,000 Pounds</i>	<i>1,000 Pounds</i>	<i>Percent</i>	<i>1,000 Pounds</i>	<i>1,000 Pounds</i>	<i>Percent</i>
Total Cheese ³						
Jan	717,454	717,763		717,454	717,763	
Feb	667,887	653,516	-2.2	1,385,341	1,371,279	-1.0
Mar	742,764	735,370	-1.0	2,128,105	2,106,649	-1.0
Apr	719,231	721,438	0.3	2,847,336	2,828,087	-0.7
May	748,263	740,014	-1.1	3,595,599	3,568,101	-0.8
Jun	708,284			4,303,883		
Jul	692,195			4,996,078		
Aug	714,314			5,710,392		
Sep	683,895			6,394,287		
Oct	732,157			7,126,444		
Nov	725,444			7,851,888		
Dec	747,161			8,599,049		
American Cheese						
Jan	317,538	319,517	0.6	317,538	319,517	0.6
Feb	292,857	285,649	-2.5	610,395	605,166	-0.9
Mar	322,054	318,491	-1.1	932,449	923,657	-0.9
Apr	320,432	308,599	-3.7	1,252,881	1,232,256	-1.6
May	329,921	319,146	-3.3	1,582,802	1,551,402	-2.0
Jun	313,998			1,896,800		
Jul	305,409			2,202,209		
Aug	309,640			2,511,849		
Sep	287,537			2,799,386		
Oct	297,840			3,097,226		
Nov	294,363			3,391,589		
Dec	317,426			3,709,015		
Cheddar Cheese						
Jan	246,385	247,786	0.6	246,385	247,786	0.6
Feb	227,721	218,823	-3.9	474,106	466,609	-1.6
Mar	253,112	242,232	-4.3	727,218	708,841	-2.5
Apr	253,909	234,713	-7.6	981,127	943,554	-3.8
May	258,360	240,099	-7.1	1,239,487	1,183,653	-4.5
Jun	243,222			1,482,709		
Jul	232,613			1,715,322		
Aug	231,669			1,946,991		
Sep	214,095			2,161,086		
Oct	219,119			2,380,205		
Nov	219,669			2,599,874		
Dec	240,203			2,840,077		

See footnote(s) at end of table.

--continued

**Dairy Products: Production by Product and Month,
United States, 2002-2003 ¹ (continued)**

Product and Month	By Month			Cumulative		
	2002	2003	Change From 2002	2002	2003	Change From 2002
	<i>1,000 Pounds</i>	<i>1,000 Pounds</i>	<i>Percent</i>	<i>1,000 Pounds</i>	<i>1,000 Pounds</i>	<i>Percent</i>
Italian Cheese ³						
Jan	296,654	293,345	-1.1	296,654	293,345	-1.1
Feb	278,013	272,616	-1.9	574,667	565,961	-1.5
Mar	307,324	305,440	-0.6	881,991	871,401	-1.2
Apr	289,919	303,372	4.6	1,171,910	1,174,773	0.2
May	305,072	306,879	0.6	1,476,982	1,481,652	0.3
Jun	280,388			1,757,370		
Jul	275,506			2,032,876		
Aug	285,840			2,318,716		
Sep	277,883			2,596,599		
Oct	300,818			2,897,417		
Nov	297,400			3,194,817		
Dec	311,661			3,506,478		
Mozzarella						
Jan	236,958	232,355	-1.9	236,958	232,355	-1.9
Feb	223,384	218,084	-2.4	460,342	450,439	-2.2
Mar	246,569	243,230	-1.4	706,911	693,669	-1.9
Apr	231,324	242,905	5.0	938,235	936,574	-0.2
May	247,659	251,253	1.5	1,185,894	1,187,827	0.2
Jun	228,778			1,414,672		
Jul	222,293			1,636,965		
Aug	229,911			1,866,876		
Sep	226,158			2,093,034		
Oct	237,294			2,330,328		
Nov	234,783			2,565,111		
Dec	248,601			2,813,712		
Other Italian						
Jan	59,696	60,990	2.2	59,696	60,990	2.2
Feb	54,629	54,532	-0.2	114,325	115,522	1.0
Mar	60,755	62,210	2.4	175,080	177,732	1.5
Apr	58,595	60,467	3.2	233,675	238,199	1.9
May	57,413	55,626	-3.1	291,088	293,825	0.9
Jun	51,610			342,698		
Jul	53,213			395,911		
Aug	55,929			451,840		
Sep	51,725			503,565		
Oct	63,524			567,089		
Nov	62,617			629,706		
Dec	63,060			692,766		

See footnote(s) at end of table.

--continued

**Dairy Products: Production by Product and Month,
United States, 2002-2003 ¹ (continued)**

Product and Month	By Month			Cumulative		
	2002	2003	Change From 2002	2002	2003	Change From 2002
	<i>1,000 Pounds</i>	<i>1,000 Pounds</i>	<i>Percent</i>	<i>1,000 Pounds</i>	<i>1,000 Pounds</i>	<i>Percent</i>
Butter						
Jan	140,069	141,440	1.0	140,069	141,440	1.0
Feb	124,231	128,362	3.3	264,300	269,802	2.1
Mar	127,695	126,338	-1.1	391,995	396,140	1.1
Apr	131,605	122,715	-6.8	523,600	518,855	-0.9
May	125,484	114,629	-8.7	649,084	633,484	-2.4
Jun	95,818			744,902		
Jul	94,409			839,311		
Aug	88,883			928,194		
Sep	92,818			1,021,012		
Oct	102,613			1,123,625		
Nov	103,932			1,227,557		
Dec	127,591			1,355,148		
Nonfat Dry Milk, Human						
Jan	128,675	133,758	4.0	128,675	133,758	4.0
Feb	127,707	130,355	2.1	256,382	264,113	3.0
Mar	153,057	146,276	-4.4	409,439	410,389	0.2
Apr	164,159	150,404	-8.4	573,598	560,793	-2.2
May	163,379	154,324	-5.5	736,977	715,117	-3.0
Jun	152,982			889,959		
Jul	129,071			1,019,030		
Aug	117,870			1,136,900		
Sep	97,191			1,234,091		
Oct	103,357			1,337,448		
Nov	99,049			1,436,497		
Dec	132,494			1,568,991		
Total Dry Whey ²						
Jan	90,071	97,664	8.4	90,071	97,664	8.4
Feb	84,430	88,712	5.1	174,501	186,376	6.8
Mar	96,405	101,088	4.9	270,906	287,464	6.1
Apr	93,868	95,034	1.2	364,774	382,498	4.9
May	98,417	100,040	1.6	463,191	482,538	4.2
Jun	93,720			556,911		
Jul	92,358			649,269		
Aug	93,820			743,089		
Sep	89,639			832,728		
Oct	93,177			925,905		
Nov	91,599			1,017,504		
Dec	98,268			1,115,772		

See footnote(s) at end of table.

--continued

**Dairy Products: Production by Product and Month,
United States, 2002-2003 ¹ (continued)**

Product and Month	By Month			Cumulative		
	2002	2003	Change From 2002	2002	2003	Change From 2002
	<i>1,000 Pounds</i>	<i>1,000 Pounds</i>	<i>Percent</i>	<i>1,000 Pounds</i>	<i>1,000 Pounds</i>	<i>Percent</i>
Cream Cottage Cheese						
Jan	30,045	31,386	4.5	30,045	31,386	4.5
Feb	29,034	29,155	0.4	59,079	60,541	2.5
Mar	31,607	31,991	1.2	90,686	92,532	2.0
Apr	31,454	33,949	7.9	122,140	126,481	3.6
May	32,966	32,798	-0.5	155,106	159,279	2.7
Jun	30,787			185,893		
Jul	32,588			218,481		
Aug	33,753			252,234		
Sep	31,945			284,179		
Oct	31,876			316,055		
Nov	27,764			343,819		
Dec	28,580			372,399		
Lowfat Cottage Cheese						
Jan	29,525	30,397	3.0	29,525	30,397	3.0
Feb	29,344	29,345		58,869	59,742	1.5
Mar	31,999	32,459	1.4	90,868	92,201	1.5
Apr	31,091	33,234	6.9	121,959	125,435	2.9
May	34,658	33,280	-4.0	156,617	158,715	1.3
Jun	29,266			185,883		
Jul	34,105			219,988		
Aug	34,778			254,766		
Sep	31,505			286,271		
Oct	32,349			318,620		
Nov	27,292			345,912		
Dec	28,384			374,296		
	<i>1,000 Gallons</i>	<i>1,000 Gallons</i>	<i>Percent</i>	<i>1,000 Gallons</i>	<i>1,000 Gallons</i>	<i>Percent</i>
Ice Cream, Hard						
Jan	69,696	67,337	-3.4	69,696	67,337	-3.4
Feb	69,293	70,615	1.9	138,989	137,952	-0.7
Mar	75,823	73,595	-2.9	214,812	211,547	-1.5
Apr	80,364	79,402	-1.2	295,176	290,949	-1.4
May	77,609	78,716	1.4	372,785	369,665	-0.8
Jun	80,779			453,564		
Jul	82,999			536,563		
Aug	77,896			614,459		
Sep	69,894			684,353		
Oct	70,501			754,854		
Nov	57,374			812,228		
Dec	53,903			866,131		

See footnote(s) at end of table.

--continued

**Dairy Products: Production by Product and Month,
United States, 2002-2003¹ (continued)**

Product and Month	By Month			Cumulative		
	2002	2003	Change From 2002	2002	2003	Change From 2002
	<i>1,000 Gallons</i>	<i>1,000 Gallons</i>	<i>Percent</i>	<i>1,000 Gallons</i>	<i>1,000 Gallons</i>	<i>Percent</i>
Ice Cream, Lowfat						
Jan	23,520	25,274	7.5	23,520	25,274	7.5
Feb	25,096	25,853	3.0	48,616	51,127	5.2
Mar	30,861	35,416	14.8	79,477	86,543	8.9
Apr	34,564	37,557	8.7	114,041	124,100	8.8
May	37,863	40,362	6.6	151,904	164,462	8.3
Jun	37,347			189,251		
Jul	36,211			225,462		
Aug	34,033			259,495		
Sep	28,540			288,035		
Oct	27,696			315,731		
Nov	22,428			338,159		
Dec	23,428			361,587		
Ice Cream, NF, Hard						
Jan	1,665	1,584	-4.9	1,665	1,584	-4.9
Feb	1,350	1,689	25.1	3,015	3,273	8.6
Mar	1,858	1,580	-15.0	4,873	4,853	-0.4
Apr	1,693	1,908	12.7	6,566	6,761	3.0
May	1,566	1,875	19.7	8,132	8,636	6.2
Jun	1,483			9,615		
Jul	1,546			11,161		
Aug	1,534			12,695		
Sep	1,423			14,118		
Oct	1,572			15,690		
Nov	1,451			17,141		
Dec	1,250			18,391		
Sherbet, Hard						
Jan	3,731	4,056	8.7	3,731	4,056	8.7
Feb	3,904	4,406	12.9	7,635	8,462	10.8
Mar	4,775	5,011	4.9	12,410	13,473	8.6
Apr	5,047	5,438	7.7	17,457	18,911	8.3
May	5,250	5,312	1.2	22,707	24,223	6.7
Jun	5,225			27,932		
Jul	5,478			33,410		
Aug	4,629			38,039		
Sep	4,124			42,163		
Oct	4,058			46,221		
Nov	2,934			49,155		
Dec	3,189			52,344		

See footnote(s) at end of table.

--continued

**Dairy Products: Production by Product and Month,
United States, 2002-2003¹ (continued)**

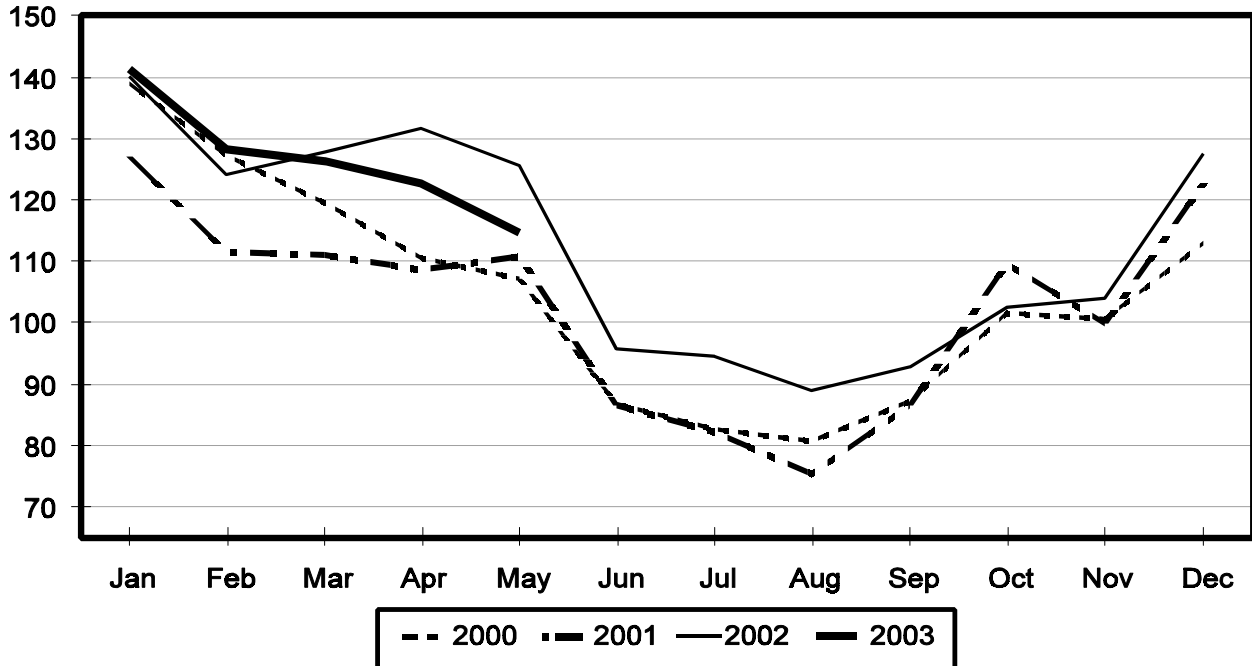
Product and Month	By Month			Cumulative		
	2002	2003	Change From 2002	2002	2003	Change From 2002
	<i>1,000 Gallons</i>	<i>1,000 Gallons</i>	<i>Percent</i>	<i>1,000 Gallons</i>	<i>1,000 Gallons</i>	<i>Percent</i>
Frozen Yogurt						
Jan	5,715	5,719	0.1	5,715	5,719	0.1
Feb	6,012	5,505	-8.4	11,727	11,224	-4.3
Mar	6,696	5,794	-13.5	18,423	17,018	-7.6
Apr	7,156	6,370	-11.0	25,579	23,388	-8.6
May	6,932	6,501	-6.2	32,511	29,889	-8.1
Jun	6,498			39,009		
Jul	6,722			45,731		
Aug	6,619			52,350		
Sep	6,046			58,396		
Oct	5,842			64,238		
Nov	4,937			69,175		
Dec	4,231			73,406		

¹ April 2003 data revised.

² Excludes all modified dry whey products.

Total Butter Production United States

Million Pounds



**Total Cheese, Excluding Cottage Cheese: Production by
State and United States, May 2002-2003**

State	May 2002	Apr ¹ 2003	May 2003	Change From	
				May 2002	Apr 2003
	<i>1,000 Pounds</i>	<i>1,000 Pounds</i>	<i>1,000 Pounds</i>	<i>Percent</i>	<i>Percent</i>
CA	147,550	151,280	155,827	5.6	3.0
ID	52,456	52,991	54,791	4.5	3.4
IL	7,736	6,861	7,588	-1.9	10.6
IA	23,653	21,858	24,910	5.3	14.0
MA	71	72	67	-5.6	-6.9
MN	54,547	53,491	54,635	0.2	2.1
MO	8,684	7,623	7,764	-10.6	1.8
NY	59,069	59,045	58,041	-1.7	-1.7
OH	13,100	13,190	14,358	9.6	8.9
PA	35,378	32,108	30,854	-12.8	-3.9
SD	13,283	12,881	14,029	5.6	8.9
UT	6,527	5,870	6,487	-0.6	10.5
WA	13,029				
WI	190,765	181,891	189,374	-0.7	4.1
Oth Sts ²	122,415	122,277	121,289	-0.9	-0.8
US	748,263	721,438	740,014	-1.1	2.6
N Atlantic	115,670	107,026	102,207	-11.6	-4.5
S Atlantic	3,366	4,007	3,335	-0.9	-16.8
E N Central	227,480	216,588	226,661	-0.4	4.7
W N Central	109,033	103,028	106,772	-2.1	3.6
S Central	5,094	7,142	6,712	31.8	-6.0
West	287,620	283,647	294,327	2.3	3.8

¹ Revised.

² States not shown when fewer than 3 plants reported or individual plant operations could be disclosed. Percent change shown only when comparable States are included in the calculation.

American Cheese: Production by State and United States, May 2002-2003

State	May 2002	Apr ¹ 2003	May 2003	Change From	
				May 2002	Apr 2003
	<i>1,000 Pounds</i>	<i>1,000 Pounds</i>	<i>1,000 Pounds</i>	<i>Percent</i>	<i>Percent</i>
CA	71,018	67,910	71,414	0.6	5.2
ID	41,824	38,539	40,349	-3.5	4.7
IA	12,792	11,818	12,322	-3.7	4.3
MN	52,507	51,491	53,408	1.7	3.7
NY	9,960	9,578	8,810	-11.5	-8.0
OH	3,004	2,912	3,500	16.5	20.2
OR	8,335	8,155	8,721	4.6	6.9
SD	6,689	6,543	7,243	8.3	10.7
WA	13,006				
WI	74,198	66,600	68,700	-7.4	3.2
Oth Sts ²	36,588	45,053	44,679	22.1	-0.8
US	329,921	308,599	319,146	-3.3	3.4
Atlantic	15,897	15,291	12,035	-24.3	-21.3
E N Central	78,554	70,735	73,279	-6.7	3.6
W N Central	74,057	70,848	74,068		4.5
S Central	3,947	4,372	3,925	-0.6	-10.2
West	157,466	147,353	155,839	-1.0	5.8

¹ Revised.

² States not shown when fewer than 3 plants reported or individual plant operations could be disclosed. Percent change shown only when comparable States are included in the calculation.

Cheddar Cheese: Production by State and United States, May 2002-2003

State	May 2002	Apr ¹ 2003	May 2003	Change From	
				May 2002	Apr 2003
	<i>1,000 Pounds</i>	<i>1,000 Pounds</i>	<i>1,000 Pounds</i>	<i>Percent</i>	<i>Percent</i>
CA	52,336	45,993	50,470	-3.6	9.7
ID	20,317	17,590	18,359	-9.6	4.4
MN	49,712	47,385	49,220	-1.0	3.9
NY	9,870	9,496	8,646	-12.4	-9.0
SD	4,082	4,638	4,050	-0.8	-12.7
WA	10,703				
WI	59,702	54,300	53,400	-10.6	-1.7
Oth Sts ²	51,638	55,311	55,954	8.4	1.2
US	258,360	234,713	240,099	-7.1	2.3
Atlantic	15,524	14,559	11,409	-26.5	-21.6
E N Cen	62,130	56,442	55,805	-10.2	-1.1
W N Cen	63,501	59,657	61,517	-3.1	3.1
S Cen	3,939	4,372	3,925	-0.4	-10.2
West	113,266	99,683	107,443	-5.1	7.8

¹ Revised.

² States not shown when fewer than 3 plants reported or individual plant operations could be disclosed. Percent change shown only when comparable States are included in the calculation.

Mozzarella Cheese: Production by State and United States, May 2002-2003

State	May 2002	Apr ¹ 2003	May 2003	Change From	
				May 2002	Apr 2003
	<i>1,000 Pounds</i>	<i>1,000 Pounds</i>	<i>1,000 Pounds</i>	<i>Percent</i>	<i>Percent</i>
CA	57,602	65,083	67,335	16.9	3.5
NY	18,098	16,481	17,864	-1.3	8.4
PA	20,347	17,674	17,972	-11.7	1.7
WI	63,206	62,200	64,400	1.9	3.5
Oth Sts ²	88,406	81,467	83,682	-5.3	2.7
US	247,659	242,905	251,253	1.5	3.4
Atlantic ³	50,678	42,424	44,251	-12.7	4.3
E N Central	77,649	75,635	78,548	1.2	3.9
West	103,732	108,192	111,215	7.2	2.8

¹ Revised.

² States not shown when fewer than 3 plants reported or individual plant operations could be disclosed. Percent change shown only when comparable States are included in the calculation.

³ Region totals may not add to U.S. when compiled regions could not be disclosed.

Butter: Production by State and United States, May 2002-2003

State	May 2002	Apr ¹ 2003	May 2003	Change From	
				May 2002	Apr 2003
	<i>1,000 Pounds</i>	<i>1,000 Pounds</i>	<i>1,000 Pounds</i>	<i>Percent</i>	<i>Percent</i>
CA	35,150	34,233	32,884	-6.4	-3.9
NY	2,780	2,129	2,044	-26.5	-4.0
PA	8,910	7,648	7,959	-10.7	4.1
WA	10,193				
WI	31,171	29,600	26,900	-13.7	-9.1
Oth Sts ²	37,280	49,105	44,842	20.3	-8.7
US	125,484	122,715	114,629	-8.7	-6.6
N Atlantic ³	15,783	14,087	14,185	-10.1	0.7
E N Central	34,563	33,440	29,807	-13.8	-10.9
W N Central	10,635	10,028	8,803	-17.2	-12.2
West	51,068	50,555	48,771	-4.5	-3.5

¹ Revised.

² States not shown when fewer than 3 plants reported or individual plant operations could be disclosed. Percent change shown only when comparable States are included in the calculation.

³ Region totals may not add to U.S. when compiled regions could not be disclosed.

**Nonfat Dry Milk, Human: Production by State
and United States, May 2002-2003**

State	May 2002	Apr ¹ 2003	May 2003	Change From	
				May 2002	Apr 2003
	<i>1,000 Pounds</i>	<i>1,000 Pounds</i>	<i>1,000 Pounds</i>	<i>Percent</i>	<i>Percent</i>
CA	71,840	68,186	66,189	-7.9	-2.9
ID	8,518	5,423	5,874	-31.0	8.3
WA	17,435				
Oth Sts ²	65,586	76,795	82,261	25.4	7.1
US	163,379	150,404	154,324	-5.5	2.6
Atlantic	23,753	21,528	24,149	1.7	12.2
E N Central	6,668	4,707	4,686	-29.7	-0.4
W N Central	7,687	6,868	7,350	-4.4	7.0
S Central	9,536	7,656	8,148	-14.6	6.4
West	115,735	109,645	109,991	-5.0	0.3

¹ Revised.

² States not shown when fewer than 3 plants reported or individual plant operations could be disclosed. Percent change shown only when comparable States are included in the calculation.

**Dry Whey, Human: Production by State
and United States, May 2002-2003**

State	May 2002	Apr ¹ 2003	May 2003	Change From	
				May 2002	Apr 2003
	<i>1,000 Pounds</i>	<i>1,000 Pounds</i>	<i>1,000 Pounds</i>	<i>Percent</i>	<i>Percent</i>
CA	12,640	10,754	11,540	-8.7	7.3
MN	7,064	7,420	9,033	27.9	21.7
NY	11,228	9,647	11,043	-1.6	14.5
PA	9,799	11,561	10,960	11.8	-5.2
WA	8,074				
WI	25,386	26,759	27,300	7.5	2.0
Oth Sts ²	18,529	24,030	25,364	36.9	5.6
US	92,720	90,171	95,240	2.7	5.6
Atlantic	21,027	21,208	22,003	4.6	3.7
Central	45,922	45,341	48,390	5.4	6.7
West	25,771	23,622	24,847	-3.6	5.2

¹ Revised.

² States not shown when fewer than 3 plants reported or individual plant operations could be disclosed. Percent change shown only when comparable States are included in the calculation.

Ice Cream, Hard: Production by State and United States, May 2002-2003

State	May 2002	Apr ¹ 2003	May 2003	Change From	
				May 2002	Apr 2003
	<i>1,000 Gallons</i>	<i>1,000 Gallons</i>	<i>1,000 Gallons</i>	<i>Percent</i>	<i>Percent</i>
CA	12,802	10,952	10,845	-15.3	-1.0
FL	1,934	1,700	1,820	-5.9	7.1
IL	2,340	3,099	3,075	31.4	-0.8
IN	4,948	6,765	5,666	14.5	-16.2
MD	2,101	1,923	1,898	-9.7	-1.3
MA	6,057	6,767	5,916	-2.3	-12.6
MI	1,923	1,572	1,675	-12.9	6.6
MN	3,939	3,434	2,940	-25.4	-14.4
MO	1,300	2,005	1,401	7.8	-30.1
NY	2,721	3,200	3,100	13.9	-3.1
NC	1,909	1,449	1,880	-1.5	29.7
OH	3,100	2,969	3,682	18.8	24.0
OR	1,207	1,150	1,200	-0.6	4.3
PA	3,324	4,016	4,175	25.6	4.0
SD	3	3	2	-33.3	-33.3
TN	1,592	1,497	1,732	8.8	15.7
TX	4,419	4,276	4,336	-1.9	1.4
UT	1,521	1,489	1,534	0.9	3.0
WA	1,430	1,594	1,423	-0.5	-10.7
Oth Sts ²	19,039	19,542	20,416	7.2	4.5
US	77,609	79,402	78,716	1.4	-0.9
N Atlantic	15,179	16,532	16,277	7.2	-1.5
S Atlantic	7,381	6,830	7,340	-0.6	7.5
E N Central	13,144	15,343	15,084	14.8	-1.7
W N Central	12,187	13,447	12,416	1.9	-7.7
S Central	10,175	9,408	9,949	-2.2	5.8
West	19,543	17,842	17,650	-9.7	-1.1

¹ Revised.

² States not shown when fewer than 3 plants reported or individual plant operations could be disclosed. Percent change shown only when comparable States are included in the calculation.

**Canned Milk and Dry Milk Products: Manufacturers' Shipments,
Stocks, and Selling Prices, May, 2002-2003**

Product	May 2002	Apr 2003 ¹	May 2003	Change From	
				May 2002	Apr 2003
	Manufacturers' Shipments ²				
	<i>1,000 Pounds</i>	<i>1,000 Pounds</i>	<i>1,000 Pounds</i>	<i>Percent</i>	<i>Percent</i>
Nonfat Dry Milk, Human	188,748	162,795	172,341	-8.7	5.9
	Manufacturers' Stocks End-of-Month ³				
	<i>1,000 Pounds</i>	<i>1,000 Pounds</i>	<i>1,000 Pounds</i>	<i>Percent</i>	<i>Percent</i>
Canned Evaporated and Condensed Whole Milk	55,405	59,403	63,754	15.1	7.3
Nonfat Dry Milk, Human	169,719	154,146	153,911	-9.3	-0.2
Dry Buttermilk, Total	13,991	11,260	10,942	-21.8	-2.8

¹ Revised.

² For dry products, shipments of bulk goods only.

³ Stocks held by manufacturers at all points and in transit.

Procedures and Reliability: Estimates included in this report are based on data provided each month by manufacturers of these products. In 32 States, the State Departments of Agriculture assist in collection of data, which eliminates duplicate reporting and reduces respondent burden. Data are collected by mail, personal and telephone interviews following the close of each month. There were 1,153 manufacturers that made one or more products in 2002. Each month, reports are generally received from all dairy plants in States with small numbers of plants. In States with large numbers of plants, survey procedures are designed to obtain monthly reports from all large plants and from a sample of small plants. Monthly estimates are based upon returns from about 70 percent of the plants which account for 70 to 90 percent of the total production of major dairy products.

Revision Policy: Monthly estimates are subject to revision the month following the preliminary estimates. Annual estimates are published in the "**Dairy Products**" report published each April which includes any revisions made to current and previous year. An attempt is made to get information from all plants for preparing these estimates.

The next "Dairy Products" report will be released at 3 p.m. ET on August 5, 2003.

The United States Department of Agriculture (USDA) prohibits discrimination in all its programs on the basis of race, color, national origin, gender, religion, age, disability, political beliefs, sexual orientation, and marital or family status. (Not all prohibited bases apply to all programs.) Persons with disabilities who require alternative means for communication of program information (braille, large print, audiotape, etc.) should contact the USDA's TARGET Center at 202-720-2600 (voice and TDD).

To file a complaint of discrimination, write USDA, Director, Office of Civil Rights, Room 326-W, Whitten Building, 1400 Independence Avenue, SW, Washington, D.C., 20250-9410, or call 202-720-5964 (voice or TDD). USDA is an equal opportunity provider and employer.

ACCESS TO REPORTS!!

For your convenience, there are several ways to obtain NASS reports, data products, and services:

INTERNET ACCESS

All NASS reports are available free of charge on the worldwide Internet. For access, connect to the Internet and go to the NASS Home Page at: <http://www.usda.gov/nass/>. Select "Today's Reports" or Publications and then Reports Calendar or Publications and then Search, by Title or Subject.

E-MAIL SUBSCRIPTION

All NASS reports are available by subscription free of charge direct to your e-mail address. Starting with the NASS Home Page at <http://www.usda.gov/nass/>, click on **Publications**, then click on the **Subscribe by E-mail** button which takes you to the page describing e-mail delivery of reports. Finally, click on **Go to the Subscription Page** and follow the instructions.

AUTOFAX ACCESS

NASSFax service is available for some reports from your fax machine. Please call 202-720-2000, using the handset attached to your fax. Respond to the voice prompts. Document 0411 is a list of available reports.

PRINTED REPORTS OR DATA PRODUCTS

CALL OUR TOLL-FREE ORDER DESK: 800-999-6779 (U.S. and Canada)
Other areas, please call 703-605-6220 FAX: 703-605-6900
(Visa, MasterCard, check, or money order acceptable for payment.)

ASSISTANCE

For **assistance** with general agricultural statistics or further information about NASS or its products or services, contact the **Agricultural Statistics Hotline** at **800-727-9540**, 7:30 a.m. to 4:00 p.m. ET, or e-mail: nass@nass.usda.gov.
