

Released August 5, 2003, by the National Agricultural Statistics Service (NASS), Agricultural Statistics Board, U.S. Department of Agriculture. For information on "Dairy Products" call Kevin Pautler at (202) 720-9168, office hours 7:30 a.m. to 4:00 p.m. ET.

June 2003 Highlights

Total cheese output (excluding cottage cheese) was 714 million pounds, 0.8 percent above June 2002 but 3.8 percent below May 2003.

American type cheese production totaled 309 million pounds, 1.5 percent below June 2002 and 3.4 percent below May 2003.

Butter production was 89.9 million pounds in June, 6.2 percent below June 2002 and 21.6 percent below May 2003.

Frozen dessert: (comparisons with June 2002)

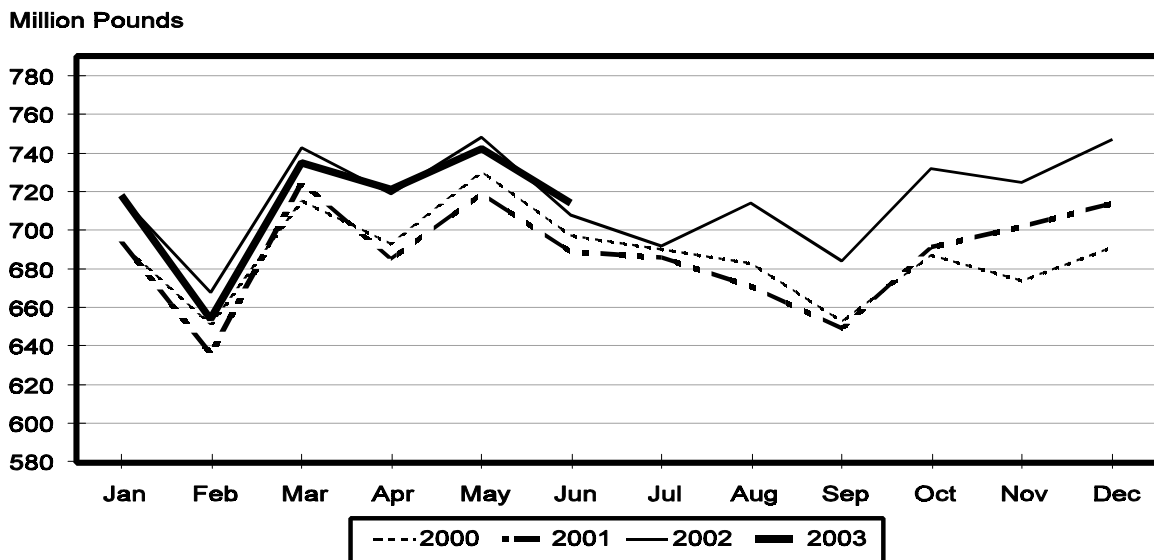
Ice cream, Regular (hard) --- 83.6 million gallons, up 3.5 percent.
Ice cream, Lowfat (total) --- 43.1 million gallons, up 15.3 percent.
Ice cream, Nonfat (hard) --- 1.89 million gallons, up 27.6 percent.
Sherbet (hard) --- 5.80 million gallons, up 10.9 percent.
Frozen Yogurt (total) --- 6.31 million gallons, down 2.9 percent.

Nonfat dry milk for human food: (compared with June 2002) --- 131 million pounds, down 14.1 percent.

Dry whey products: (comparisons with June 2002)

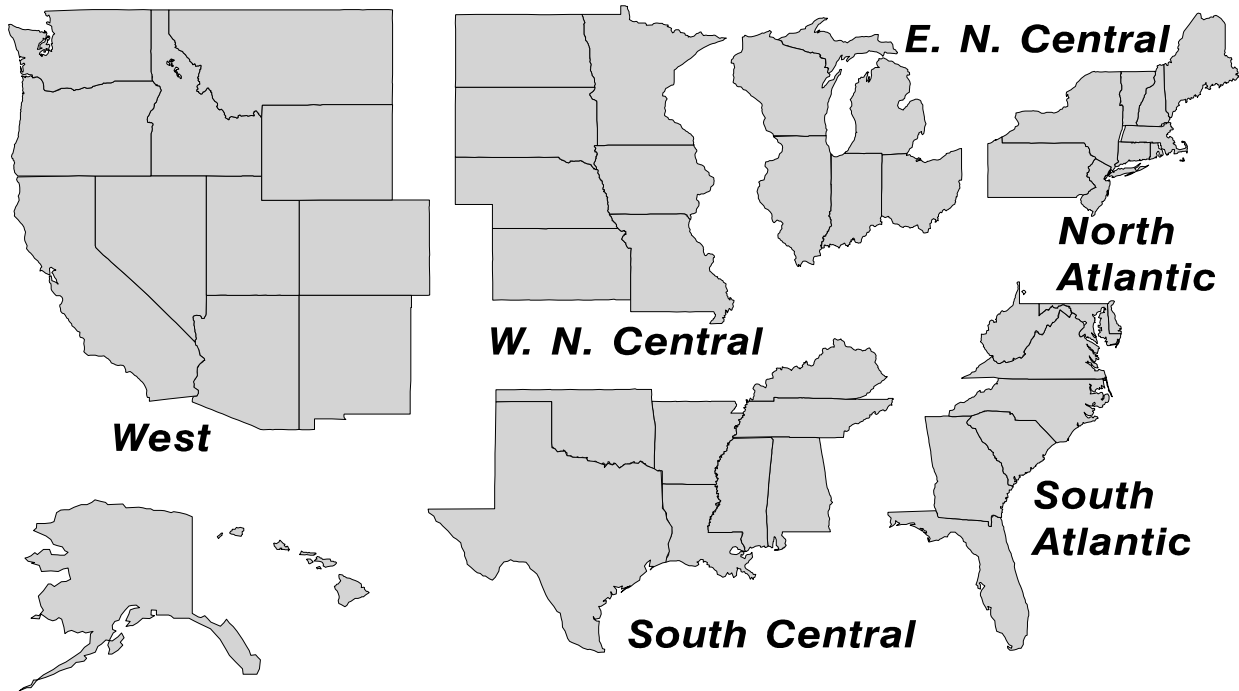
Dry whey, human --- 88.7 million pounds, up slightly.
Dry whey, animal --- 6.48 million pounds, up 24.4 percent.
Dry whey, total --- 95.1 million pounds, up 1.5 percent.

Total Cheese Production United States



U. S. Geographic Regions Dairy Products

State totals are not published when fewer than 3 firms have reported or one firm comprises more than 60 percent of the State total. If we are not able to publish a region for confidentiality reasons, it will be combined with other regions when possible. For example, if North Atlantic can not be published, then it will be combined with South Atlantic to publish Atlantic. The West North Central and East North Central will be combined, if necessary, to form North Central. In the event that neither could be published, they may be combined with South Central to publish Central. Some tables will have only limited regions shown, therefore the regions may not add to the United States total.



**Dairy Products: Production by Product,
United States, June, 2002-2003**

Product	Jun 2002	May 2003 ¹	Jun 2003	Change From	
				Jun 2002	May 2003
	<i>1,000 Pounds</i>	<i>1,000 Pounds</i>	<i>1,000 Pounds</i>	<i>Percent</i>	<i>Percent</i>
Butter	95,818	114,678	89,917	-6.2	-21.6
Cheese					
American Types ²	313,998	320,185	309,397	-1.5	-3.4
Cheddar	243,222	240,929	233,741	-3.9	-3.0
Swiss	20,871	22,287	22,055	5.7	-1.0
Brick and Muenster	7,383	8,077	7,495	1.5	-7.2
Cream and Neufchatel	59,534	55,814	53,344	-10.4	-4.4
Hispanic	9,215	10,624	9,701	5.3	-8.7
Mozzarella	228,778	252,404	237,956	4.0	-5.7
Other Italian Types	51,610	55,519	55,845	8.2	0.6
Total Italian Types	280,388	307,923	293,801	4.8	-4.6
All Other Types	16,895	17,269	18,243	8.0	5.6
Total	708,284	742,179	714,036	0.8	-3.8
Cottage Cheese, Curd ³	34,529	37,353	35,135	1.8	-5.9
Cottage Cheese, Cream ⁴	30,787	32,767	32,311	5.0	-1.4
Cottage Cheese, Lowfat ⁵	29,266	32,398	31,244	6.8	-3.6
Canned Evaporated and Condensed Whole Milk	58,932	61,428	59,929	1.7	-2.4
Dry Whole Milk	4,625	1,884	3,291	-28.8	74.7
Nonfat Dry Milk, Human	152,982	154,168	131,436	-14.1	-14.7
Dry Skim Milk, Animal	647	472	456	-29.5	-3.4
Dry Buttermilk	4,048	5,011	2,977	-26.5	-40.6
Sour Cream ⁶		77,856	78,374		0.7
Yogurt, Plain & Flavored	177,373	182,246	189,874	7.0	4.2
	<i>1,000 Gallons</i>	<i>1,000 Gallons</i>	<i>1,000 Gallons</i>	<i>Percent</i>	<i>Percent</i>
Frozen Products					
Ice Cream, Hard	80,779	79,138	83,585	3.5	5.6
Ice Cream, Lowfat, Hard	9,668	9,961	9,633	-0.4	-3.3
Ice Cream, Lowfat, Soft	27,679	30,484	33,446	20.8	9.7
Ice Cream, Lowfat, Total	37,347	40,445	43,079	15.3	6.5
Ice Cream, Nonfat, Hard	1,483	1,875	1,892	27.6	0.9
Sherbet, Hard	5,225	5,319	5,795	10.9	8.9
Water and Juice Ices	7,438	6,836	7,208	-3.1	5.4
Frozen Yogurt, Total	6,498	6,482	6,309	-2.9	-2.7
Regular & Lowfat, Hard	2,137	2,034	1,969	-7.9	-3.2
Nonfat, Hard	1,204	1,217	1,187	-1.4	-2.5
Other Frozen Dairy Products	794	811	854	7.6	5.3
Mix for Frozen Products					
Ice Cream Mix	48,518	48,322	50,588	4.3	4.7
Ice Cream, Lowfat, Mix	22,238	22,465	23,966	7.8	6.7
Ice Cream, Nonfat, Mix	1,154	1,453	1,389	20.4	-4.4
Sherbet Mix	3,583	3,691	4,087	14.1	10.7
Yogurt Mix	3,832	3,813	3,711	-3.2	-2.7

¹ Revised.

² Includes Cheddar, Colby, Monterey, and Jack.

³ Mostly used for processing into cream or lowfat cottage cheese.

⁴ Fat content 4 percent or more.

⁵ Fat content less than 4 percent.

⁶ Corrected totals due to errors in reporting unit: January 76,716; February 64,282; and March 75,689 million pounds.

**Whey and Modified Whey Products: Production, Stocks,
and Prices, United States, June, 2002-2003**

Product	Jun 2002	May 2003 ¹	Jun 2003	Change From	
				Jun 2002	May 2003
Production					
	<i>1,000 Pounds</i>	<i>1,000 Pounds</i>	<i>1,000 Pounds</i>	<i>Percent</i>	<i>Percent</i>
Condensed Whey, Solids Content ²					
Sweet-Type, Human	9,669	10,155	8,916	-7.8	-12.2
Sweet-Type, Animal ³					
Dry Whey Products					
Dry Whey, Human	88,507	94,502	88,665	0.2	-6.2
Dry Whey, Animal	5,213	6,391	6,484	24.4	1.5
Dry Whey, Total	93,720	100,893	95,149	1.5	-5.7
Reduced Lactose and Minerals					
Human Food	8,046	3,092	3,397	-57.8	9.9
Animal Feed	3,409	3,585	3,257	-4.5	-9.1
Lactose, Human and Animal	46,570	52,922	51,046	9.6	-3.5
Whey					
Solids in Wet Blends, Animal ³	2,953	2,835	3,664	24.1	29.2
Protein Concentrate, Human ⁷	24,077	24,991	24,778	2.9	-0.9
Protein Concentrate, Animal ⁷	2,510	3,289	3,009	19.9	-8.5
Manufacturers' Stocks End-of-Month ⁴					
	<i>1,000 Pounds</i>	<i>1,000 Pounds</i>	<i>1,000 Pounds</i>	<i>Percent</i>	<i>Percent</i>
Dry Whey Products					
Dry Whey, Human	36,720	46,804	47,790	30.1	2.1
Dry Whey, Animal	2,383	2,341	2,032	-14.7	-13.2
Reduced Lactose and Minerals					
Human and Animal ⁵	9,845	10,138	9,846		-2.9
Lactose, Human and Animal	45,689	40,255	44,054	-3.6	9.4
Whey Protein Concentrate, Human ⁷	32,608	30,449	29,634	-9.1	-2.7
Whey Protein Concentrate, Animal ⁷	1,956	1,607	1,831	-6.4	13.9
Manufacturers' Selling Price ⁶					
	<i>Cents per Pound</i>	<i>Cents per Pound</i>	<i>Cents per Pound</i>	<i>Cents Change</i>	<i>Cents Change</i>
Dry Whey, Animal	14.6	11.5	10.8	-3.8	-0.7

¹ Revised.

² Final marketable product only. Does not include quantity used or shipped to another plant for further processing into dry whey or modified whey products.

³ Not shown when fewer than three plants reported or individual plant operations could be disclosed

⁴ Stocks held by manufacturers at all points and in transit.

⁵ Reduced lactose and minerals stocks combined to avoid disclosure of individual operations.

⁶ Prices for bulk goods, f.o.b. plant. Average monthly prices reported by firms.

⁷ Whey Protein Concentrate, 25.0 to 89.9 percent.

**Dairy Products: Production by Product and Month,
United States, 2002-2003 ¹**

Product and Month	By Month			Cumulative		
	2002	2003	Change From 2002	2002	2003	Change From 2002
	<i>1,000 Pounds</i>	<i>1,000 Pounds</i>	<i>Percent</i>	<i>1,000 Pounds</i>	<i>1,000 Pounds</i>	<i>Percent</i>
Total Cheese ³						
Jan	717,454	717,763		717,454	717,763	
Feb	667,887	653,516	-2.2	1,385,341	1,371,279	-1.0
Mar	742,764	735,370	-1.0	2,128,105	2,106,649	-1.0
Apr	719,231	721,438	0.3	2,847,336	2,828,087	-0.7
May	748,263	742,179	-0.8	3,595,599	3,570,266	-0.7
Jun	708,284	714,036	0.8	4,303,883	4,284,302	-0.5
Jul	692,195			4,996,078		
Aug	714,314			5,710,392		
Sep	683,895			6,394,287		
Oct	732,157			7,126,444		
Nov	725,444			7,851,888		
Dec	747,161			8,599,049		
American Cheese						
Jan	317,538	319,517	0.6	317,538	319,517	0.6
Feb	292,857	285,649	-2.5	610,395	605,166	-0.9
Mar	322,054	318,491	-1.1	932,449	923,657	-0.9
Apr	320,432	308,599	-3.7	1,252,881	1,232,256	-1.6
May	329,921	320,185	-3.0	1,582,802	1,552,441	-1.9
Jun	313,998	309,397	-1.5	1,896,800	1,861,838	-1.8
Jul	305,409			2,202,209		
Aug	309,640			2,511,849		
Sep	287,537			2,799,386		
Oct	297,840			3,097,226		
Nov	294,363			3,391,589		
Dec	317,426			3,709,015		
Cheddar Cheese						
Jan	246,385	247,786	0.6	246,385	247,786	0.6
Feb	227,721	218,823	-3.9	474,106	466,609	-1.6
Mar	253,112	242,232	-4.3	727,218	708,841	-2.5
Apr	253,909	234,713	-7.6	981,127	943,554	-3.8
May	258,360	240,929	-6.7	1,239,487	1,184,483	-4.4
Jun	243,222	233,741	-3.9	1,482,709	1,418,224	-4.3
Jul	232,613			1,715,322		
Aug	231,669			1,946,991		
Sep	214,095			2,161,086		
Oct	219,119			2,380,205		
Nov	219,669			2,599,874		
Dec	240,203			2,840,077		

See footnote(s) at end of table.

--continued

**Dairy Products: Production by Product and Month,
United States, 2002-2003 ¹ (continued)**

Product and Month	By Month			Cumulative		
	2002	2003	Change From 2002	2002	2003	Change From 2002
	<i>1,000 Pounds</i>	<i>1,000 Pounds</i>	<i>Percent</i>	<i>1,000 Pounds</i>	<i>1,000 Pounds</i>	<i>Percent</i>
Italian Cheese ³						
Jan	296,654	293,345	-1.1	296,654	293,345	-1.1
Feb	278,013	272,616	-1.9	574,667	565,961	-1.5
Mar	307,324	305,440	-0.6	881,991	871,401	-1.2
Apr	289,919	303,372	4.6	1,171,910	1,174,773	0.2
May	305,072	307,923	0.9	1,476,982	1,482,696	0.4
Jun	280,388	293,801	4.8	1,757,370	1,776,497	1.1
Jul	275,506			2,032,876		
Aug	285,840			2,318,716		
Sep	277,883			2,596,599		
Oct	300,818			2,897,417		
Nov	297,400			3,194,817		
Dec	311,661			3,506,478		
Mozzarella						
Jan	236,958	232,355	-1.9	236,958	232,355	-1.9
Feb	223,384	218,084	-2.4	460,342	450,439	-2.2
Mar	246,569	243,230	-1.4	706,911	693,669	-1.9
Apr	231,324	242,905	5.0	938,235	936,574	-0.2
May	247,659	252,404	1.9	1,185,894	1,188,978	0.3
Jun	228,778	237,956	4.0	1,414,672	1,426,934	0.9
Jul	222,293			1,636,965		
Aug	229,911			1,866,876		
Sep	226,158			2,093,034		
Oct	237,294			2,330,328		
Nov	234,783			2,565,111		
Dec	248,601			2,813,712		
Other Italian						
Jan	59,696	60,990	2.2	59,696	60,990	2.2
Feb	54,629	54,532	-0.2	114,325	115,522	1.0
Mar	60,755	62,210	2.4	175,080	177,732	1.5
Apr	58,595	60,467	3.2	233,675	238,199	1.9
May	57,413	55,519	-3.3	291,088	293,718	0.9
Jun	51,610	55,845	8.2	342,698	349,563	2.0
Jul	53,213			395,911		
Aug	55,929			451,840		
Sep	51,725			503,565		
Oct	63,524			567,089		
Nov	62,617			629,706		
Dec	63,060			692,766		

See footnote(s) at end of table.

--continued

**Dairy Products: Production by Product and Month,
United States, 2002-2003 ¹ (continued)**

Product and Month	By Month			Cumulative		
	2002	2003	Change From 2002	2002	2003	Change From 2002
	<i>1,000 Pounds</i>	<i>1,000 Pounds</i>	<i>Percent</i>	<i>1,000 Pounds</i>	<i>1,000 Pounds</i>	<i>Percent</i>
Butter						
Jan	140,069	141,440	1.0	140,069	141,440	1.0
Feb	124,231	128,362	3.3	264,300	269,802	2.1
Mar	127,695	126,338	-1.1	391,995	396,140	1.1
Apr	131,605	122,715	-6.8	523,600	518,855	-0.9
May	125,484	114,678	-8.6	649,084	633,533	-2.4
Jun	95,818	89,917	-6.2	744,902	723,450	-2.9
Jul	94,409			839,311		
Aug	88,883			928,194		
Sep	92,818			1,021,012		
Oct	102,613			1,123,625		
Nov	103,932			1,227,557		
Dec	127,591			1,355,148		
Nonfat Dry Milk, Human						
Jan	128,675	133,758	4.0	128,675	133,758	4.0
Feb	127,707	130,355	2.1	256,382	264,113	3.0
Mar	153,057	146,276	-4.4	409,439	410,389	0.2
Apr	164,159	150,404	-8.4	573,598	560,793	-2.2
May	163,379	154,168	-5.6	736,977	714,961	-3.0
Jun	152,982	131,436	-14.1	889,959	846,397	-4.9
Jul	129,071			1,019,030		
Aug	117,870			1,136,900		
Sep	97,191			1,234,091		
Oct	103,357			1,337,448		
Nov	99,049			1,436,497		
Dec	132,494			1,568,991		
Total Dry Whey ²						
Jan	90,071	97,664	8.4	90,071	97,664	8.4
Feb	84,430	88,712	5.1	174,501	186,376	6.8
Mar	96,405	101,088	4.9	270,906	287,464	6.1
Apr	93,868	95,034	1.2	364,774	382,498	4.9
May	98,417	100,893	2.5	463,191	483,391	4.4
Jun	93,720	95,149	1.5	556,911	578,540	3.9
Jul	92,358			649,269		
Aug	93,820			743,089		
Sep	89,639			832,728		
Oct	93,177			925,905		
Nov	91,599			1,017,504		
Dec	98,268			1,115,772		

See footnote(s) at end of table.

--continued

**Dairy Products: Production by Product and Month,
United States, 2002-2003 ¹ (continued)**

Product and Month	By Month			Cumulative		
	2002	2003	Change From 2002	2002	2003	Change From 2002
	<i>1,000 Pounds</i>	<i>1,000 Pounds</i>	<i>Percent</i>	<i>1,000 Pounds</i>	<i>1,000 Pounds</i>	<i>Percent</i>
Cream Cottage Cheese						
Jan	30,045	31,386	4.5	30,045	31,386	4.5
Feb	29,034	29,155	0.4	59,079	60,541	2.5
Mar	31,607	31,991	1.2	90,686	92,532	2.0
Apr	31,454	33,949	7.9	122,140	126,481	3.6
May	32,966	32,767	-0.6	155,106	159,248	2.7
Jun	30,787	32,311	5.0	185,893	191,559	3.0
Jul	32,588			218,481		
Aug	33,753			252,234		
Sep	31,945			284,179		
Oct	31,876			316,055		
Nov	27,764			343,819		
Dec	28,580			372,399		
Lowfat Cottage Cheese						
Jan	29,525	30,397	3.0	29,525	30,397	3.0
Feb	29,344	29,345		58,869	59,742	1.5
Mar	31,999	32,459	1.4	90,868	92,201	1.5
Apr	31,091	33,234	6.9	121,959	125,435	2.9
May	34,658	32,398	-6.5	156,617	157,833	0.8
Jun	29,266	31,244	6.8	185,883	189,077	1.7
Jul	34,105			219,988		
Aug	34,778			254,766		
Sep	31,505			286,271		
Oct	32,349			318,620		
Nov	27,292			345,912		
Dec	28,384			374,296		
	<i>1,000 Gallons</i>	<i>1,000 Gallons</i>	<i>Percent</i>	<i>1,000 Gallons</i>	<i>1,000 Gallons</i>	<i>Percent</i>
Ice Cream, Hard						
Jan	69,696	67,337	-3.4	69,696	67,337	-3.4
Feb	69,293	70,615	1.9	138,989	137,952	-0.7
Mar	75,823	73,595	-2.9	214,812	211,547	-1.5
Apr	80,364	79,402	-1.2	295,176	290,949	-1.4
May	77,609	79,138	2.0	372,785	370,087	-0.7
Jun	80,779	83,585	3.5	453,564	453,672	
Jul	82,999			536,563		
Aug	77,896			614,459		
Sep	69,894			684,353		
Oct	70,501			754,854		
Nov	57,374			812,228		
Dec	53,903			866,131		

See footnote(s) at end of table.

--continued

**Dairy Products: Production by Product and Month,
United States, 2002-2003 ¹ (continued)**

Product and Month	By Month			Cumulative		
	2002	2003	Change From 2002	2002	2003	Change From 2002
	<i>1,000 Gallons</i>	<i>1,000 Gallons</i>	<i>Percent</i>	<i>1,000 Gallons</i>	<i>1,000 Gallons</i>	<i>Percent</i>
Ice Cream, Lowfat						
Jan	23,520	25,274	7.5	23,520	25,274	7.5
Feb	25,096	25,853	3.0	48,616	51,127	5.2
Mar	30,861	35,416	14.8	79,477	86,543	8.9
Apr	34,564	37,557	8.7	114,041	124,100	8.8
May	37,863	40,445	6.8	151,904	164,545	8.3
Jun	37,347	43,079	15.3	189,251	207,624	9.7
Jul	36,211			225,462		
Aug	34,033			259,495		
Sep	28,540			288,035		
Oct	27,696			315,731		
Nov	22,428			338,159		
Dec	23,428			361,587		
Ice Cream, NF, Hard						
Jan	1,665	1,584	-4.9	1,665	1,584	-4.9
Feb	1,350	1,689	25.1	3,015	3,273	8.6
Mar	1,858	1,580	-15.0	4,873	4,853	-0.4
Apr	1,693	1,908	12.7	6,566	6,761	3.0
May	1,566	1,875	19.7	8,132	8,636	6.2
Jun	1,483	1,892	27.6	9,615	10,528	9.5
Jul	1,546			11,161		
Aug	1,534			12,695		
Sep	1,423			14,118		
Oct	1,572			15,690		
Nov	1,451			17,141		
Dec	1,250			18,391		
Sherbet, Hard						
Jan	3,731	4,056	8.7	3,731	4,056	8.7
Feb	3,904	4,406	12.9	7,635	8,462	10.8
Mar	4,775	5,011	4.9	12,410	13,473	8.6
Apr	5,047	5,438	7.7	17,457	18,911	8.3
May	5,250	5,319	1.3	22,707	24,230	6.7
Jun	5,225	5,795	10.9	27,932	30,025	7.5
Jul	5,478			33,410		
Aug	4,629			38,039		
Sep	4,124			42,163		
Oct	4,058			46,221		
Nov	2,934			49,155		
Dec	3,189			52,344		

See footnote(s) at end of table.

--continued

**Dairy Products: Production by Product and Month,
United States, 2002-2003¹ (continued)**

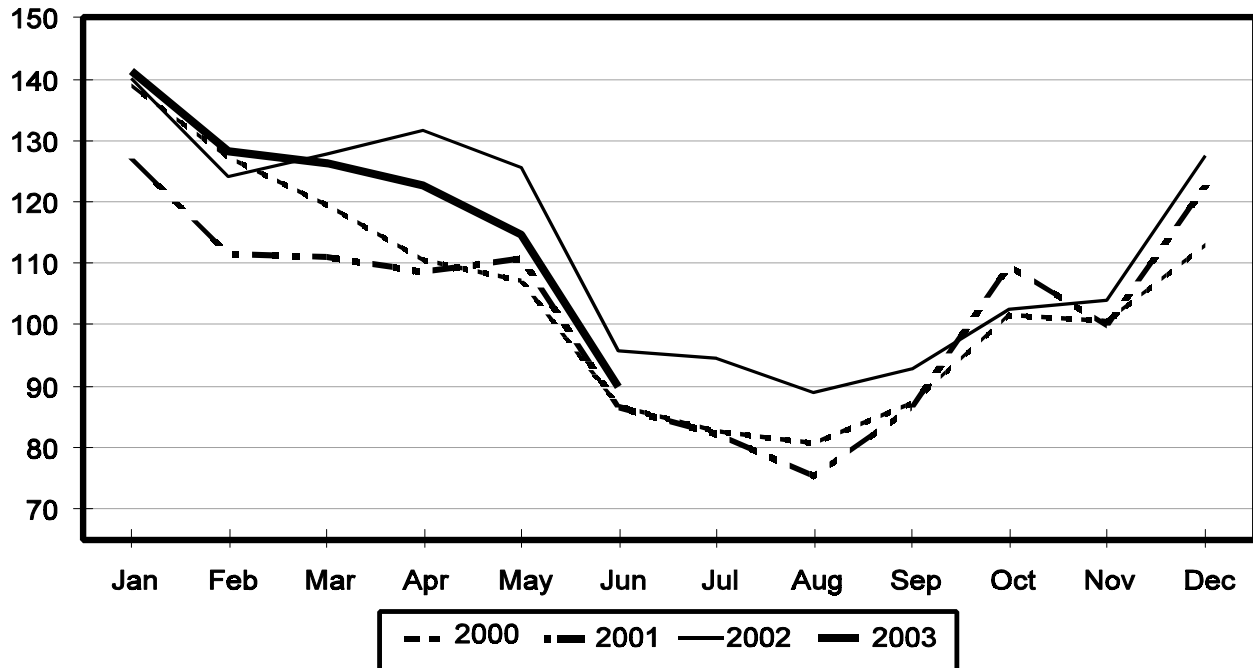
Product and Month	By Month			Cumulative		
	2002	2003	Change From 2002	2002	2003	Change From 2002
	<i>1,000 Gallons</i>	<i>1,000 Gallons</i>	<i>Percent</i>	<i>1,000 Gallons</i>	<i>1,000 Gallons</i>	<i>Percent</i>
Frozen Yogurt						
Jan	5,715	5,719	0.1	5,715	5,719	0.1
Feb	6,012	5,505	-8.4	11,727	11,224	-4.3
Mar	6,696	5,794	-13.5	18,423	17,018	-7.6
Apr	7,156	6,370	-11.0	25,579	23,388	-8.6
May	6,932	6,482	-6.5	32,511	29,870	-8.1
Jun	6,498	6,309	-2.9	39,009	36,179	-7.3
Jul	6,722			45,731		
Aug	6,619			52,350		
Sep	6,046			58,396		
Oct	5,842			64,238		
Nov	4,937			69,175		
Dec	4,231			73,406		

¹ May 2003 data revised.

² Excludes all modified dry whey products.

Total Butter Production United States

Million Pounds



**Total Cheese, Excluding Cottage Cheese: Production by
State and United States, June 2002-2003**

State	Jun 2002	May ¹ 2003	Jun 2003	Change From	
				Jun 2002	May 2003
	<i>1,000 Pounds</i>	<i>1,000 Pounds</i>	<i>1,000 Pounds</i>	<i>Percent</i>	<i>Percent</i>
CA	140,986	155,969	154,943	9.9	-0.7
ID	51,043	55,977	51,012	-0.1	-8.9
IL	7,517	7,588	7,600	1.1	0.2
IA	23,526	24,999	20,065	-14.7	-19.7
MA	60	67	73	21.7	9.0
MN	51,387	55,240	51,616	0.4	-6.6
MO	7,811	7,764	8,237	5.5	6.1
NY	57,422	57,959	54,044	-5.9	-6.8
OH	12,287	14,360	14,208	15.6	-1.1
PA	31,316	30,854	32,066	2.4	3.9
SD	12,401	14,029	13,086	5.5	-6.7
UT	6,207	6,487	6,822	9.9	5.2
WA	12,824				
WI	182,995	189,462	186,694	2.0	-1.5
Oth Sts ²	110,502	121,424	113,570	2.8	-6.5
US	708,284	742,179	714,036	0.8	-3.8
N Atlantic	106,166	101,985	101,664	-4.2	-0.3
S Atlantic	3,053	3,335	3,047	-0.2	-8.6
E N Central	217,522	226,751	222,726	2.4	-1.8
W N Central	103,803	107,459	95,159	-8.3	-11.4
S Central	6,134	6,994	7,789	27.0	11.4
West	271,606	295,655	283,651	4.4	-4.1

¹ Revised.

² States not shown when fewer than 3 plants reported or individual plant operations could be disclosed. Percent change shown only when comparable States are included in the calculation.

American Cheese: Production by State and United States, June 2002-2003

State	Jun 2002	May ¹ 2003	Jun 2003	Change From	
				Jun 2002	May 2003
	<i>1,000 Pounds</i>	<i>1,000 Pounds</i>	<i>1,000 Pounds</i>	<i>Percent</i>	<i>Percent</i>
CA	68,417	71,414	71,267	4.2	-0.2
ID	40,285	40,427	37,349	-7.3	-7.6
IA	11,558	12,403	11,099	-4.0	-10.5
MN	49,361	54,013	49,960	1.2	-7.5
NY	8,189	8,810	8,146	-0.5	-7.5
OH	2,668	3,500	3,160	18.4	-9.7
OR	8,086	8,721	8,090		-7.2
SD	6,163	7,243	7,043	14.3	-2.8
WA	12,801				
WI	73,143	68,700	67,300	-8.0	-2.0
Oth Sts ²	33,327	44,954	45,983	38.0	2.3
US	313,998	320,185	309,397	-1.5	-3.4
Atlantic	12,609	12,035	12,973	2.9	7.8
E N Central	76,918	73,279	71,388	-7.2	-2.6
W N Central	68,387	74,747	69,071	1.0	-7.6
S Central	4,485	4,207	5,002	11.5	18.9
West	151,599	155,917	150,963	-0.4	-3.2

¹ Revised.

² States not shown when fewer than 3 plants reported or individual plant operations could be disclosed. Percent change shown only when comparable States are included in the calculation.

Cheddar Cheese: Production by State and United States, June 2002-2003

State	Jun 2002	May ¹ 2003	Jun 2003	Change From	
				Jun 2002	May 2003
	<i>1,000 Pounds</i>	<i>1,000 Pounds</i>	<i>1,000 Pounds</i>	<i>Percent</i>	<i>Percent</i>
CA	49,620	50,470	49,502	-0.2	-1.9
ID	18,430	18,359	16,430	-10.9	-10.5
MN	46,677	49,694	46,699		-6.0
NY	8,087	8,646	8,000	-1.1	-7.5
SD	3,876	4,050	5,074	30.9	25.3
WA	11,150				
WI	58,619	53,400	52,100	-11.1	-2.4
Oth Sts ²	46,763	56,310	55,936	19.6	-0.7
US	243,222	240,929	233,741	-3.9	-3.0
Atlantic	12,301	11,409	12,422	1.0	8.9
E N Cen	60,714	55,805	54,400	-10.4	-2.5
W N Cen	57,932	62,065	59,090	2.0	-4.8
S Cen	4,485	4,207	4,993	11.3	18.7
West	107,790	107,443	102,836	-4.6	-4.3

¹ Revised.

² States not shown when fewer than 3 plants reported or individual plant operations could be disclosed. Percent change shown only when comparable States are included in the calculation.

Mozzarella Cheese: Production by State and United States, June 2002-2003

State	Jun 2002	May ¹ 2003	Jun 2003	Change From	
				Jun 2002	May 2003
	<i>1,000 Pounds</i>	<i>1,000 Pounds</i>	<i>1,000 Pounds</i>	<i>Percent</i>	<i>Percent</i>
CA	55,606	67,335	65,869	18.5	-2.2
NY	17,526	17,898	16,955	-3.3	-5.3
PA	16,530	17,972	17,174	3.9	-4.4
WI	59,428	64,400	65,800	10.7	2.2
Oth Sts ²	79,688	84,799	72,158	-9.4	-14.9
US	228,778	252,404	237,956	4.0	-5.7
Atlantic ³	44,553	44,278	42,843	-3.8	-3.2
E N Central	72,984	78,548	79,104	8.4	0.7
West	95,661	112,339	105,117	9.9	-6.4

¹ Revised.

² States not shown when fewer than 3 plants reported or individual plant operations could be disclosed. Percent change shown only when comparable States are included in the calculation.

³ Region totals may not add to U.S. when compiled regions could not be disclosed.

Butter: Production by State and United States, June 2002-2003

State	Jun 2002	May ¹ 2003	Jun 2003	Change From	
				Jun 2002	May 2003
	<i>1,000 Pounds</i>	<i>1,000 Pounds</i>	<i>1,000 Pounds</i>	<i>Percent</i>	<i>Percent</i>
CA	28,587	32,933	27,845	-2.6	-15.4
NY	1,817	2,043	1,919	5.6	-6.1
PA	6,204	7,959	5,453	-12.1	-31.5
WA	8,310				
WI	21,819	26,900	20,700	-5.1	-23.0
Oth Sts ²	29,081	44,843	34,000	16.9	-24.2
US	95,818	114,678	89,917	-6.2	-21.6
N Atlantic ³	11,731	14,184	10,017	-14.6	-29.4
E N Central	23,700	29,807	22,435	-5.3	-24.7
W N Central	8,576	8,803	7,484	-12.7	-15.0
West	42,613	48,821	41,669	-2.2	-14.6

¹ Revised.

² States not shown when fewer than 3 plants reported or individual plant operations could be disclosed. Percent change shown only when comparable States are included in the calculation.

³ Region totals may not add to U.S. when compiled regions could not be disclosed.

**Nonfat Dry Milk, Human: Production by State
and United States, June 2002-2003**

State	Jun 2002	May ¹ 2003	Jun 2003	Change From	
				Jun 2002	May 2003
	<i>1,000 Pounds</i>	<i>1,000 Pounds</i>	<i>1,000 Pounds</i>	<i>Percent</i>	<i>Percent</i>
CA	68,278	66,189	59,026	-13.6	-10.8
ID	8,220	5,874	5,262	-36.0	-10.4
WA	17,712				
Oth Sts ²	58,772	82,105	67,148	14.3	-18.2
US	152,982	154,168	131,436	-14.1	-14.7
Atlantic	21,393	24,149	14,597	-31.8	-39.6
E N Central	6,217	4,686	4,366	-29.8	-6.8
W N Central	6,942	7,194	6,694	-3.6	-7.0
S Central	7,782	8,148	7,679	-1.3	-5.8
West	110,648	109,991	98,100	-11.3	-10.8

¹ Revised.

² States not shown when fewer than 3 plants reported or individual plant operations could be disclosed. Percent change shown only when comparable States are included in the calculation.

**Dry Whey, Human: Production by State
and United States, June 2002-2003**

State	Jun 2002	May ¹ 2003	Jun 2003	Change From	
				Jun 2002	May 2003
	<i>1,000 Pounds</i>	<i>1,000 Pounds</i>	<i>1,000 Pounds</i>	<i>Percent</i>	<i>Percent</i>
CA	12,839	11,616	10,459	-18.5	-10.0
MN	6,410	9,983	9,115	42.2	-8.7
NY	10,127	11,043	10,197	0.7	-7.7
PA	7,808	9,287	8,317	6.5	-10.4
WA	8,450				
WI	24,898	27,154	26,700	7.2	-1.7
Oth Sts ²	17,975	25,419	23,877	32.8	-6.1
US	88,507	94,502	88,665	0.2	-6.2
Atlantic	17,935	20,330	18,514	3.2	-8.9
Central	44,996	49,249	46,861	4.1	-4.8
West	25,576	24,923	23,290	-8.9	-6.6

¹ Revised.

² States not shown when fewer than 3 plants reported or individual plant operations could be disclosed. Percent change shown only when comparable States are included in the calculation.

Ice Cream, Hard: Production by State and United States, June 2002-2003

State	Jun 2002	May ¹ 2003	Jun 2003	Change From	
				Jun 2002	May 2003
	<i>1,000 Gallons</i>	<i>1,000 Gallons</i>	<i>1,000 Gallons</i>	<i>Percent</i>	<i>Percent</i>
CA	13,204	11,250	13,321	0.9	18.4
FL	1,922	1,820	1,900	-1.1	4.4
IL	2,560	3,075	2,945	15.0	-4.2
IN	6,652	5,666	6,988	5.1	23.3
MD	2,061	1,898	1,864	-9.6	-1.8
MA	5,636	5,916	6,195	9.9	4.7
MI	2,011	1,675	1,696	-15.7	1.3
MN	4,712	2,940	3,961	-15.9	34.7
MO	1,385	1,401	1,485	7.2	6.0
NY	2,709	3,100	3,000	10.7	-3.2
NC	1,775	1,880	1,656	-6.7	-11.9
OH	3,035	3,682	2,969	-2.2	-19.4
OR	1,176	1,200	1,222	3.9	1.8
PA	3,311	4,175	4,208	27.1	0.8
SD	2	2	2		
TN	1,622	1,732	1,549	-4.5	-10.6
TX	4,167	4,336	4,206	0.9	-3.0
UT	1,570	1,534	1,535	-2.2	0.1
WA	1,361	1,423	1,150	-15.5	-19.2
Oth Sts ²	19,908	20,433	21,733	9.2	6.4
US	80,779	79,138	83,585	3.5	5.6
N Atlantic	14,455	16,277	16,250	12.4	-0.2
S Atlantic	7,247	7,340	6,748	-6.9	-8.1
E N Central	15,266	15,084	15,513	1.6	2.8
W N Central	13,168	12,416	14,402	9.4	16.0
S Central	9,876	9,949	9,841	-0.4	-1.1
West	20,767	18,072	20,831	0.3	15.3

¹ Revised.

² States not shown when fewer than 3 plants reported or individual plant operations could be disclosed. Percent change shown only when comparable States are included in the calculation.

**Canned Milk and Dry Milk Products: Manufacturers' Shipments,
Stocks, and Selling Prices, June, 2002-2003**

Product	Jun 2002	May 2003 ¹	Jun 2003	Change From	
				Jun 2002	May 2003
	Manufacturers' Shipments ²				
	<i>1,000 Pounds</i>	<i>1,000 Pounds</i>	<i>1,000 Pounds</i>	<i>Percent</i>	<i>Percent</i>
Nonfat Dry Milk, Human	173,896	167,804	157,319	-9.5	-6.2
	Manufacturers' Stocks End-of-Month ³				
	<i>1,000 Pounds</i>	<i>1,000 Pounds</i>	<i>1,000 Pounds</i>	<i>Percent</i>	<i>Percent</i>
Canned Evaporated and Condensed Whole Milk	68,733	63,297	74,685	8.7	18.0
Nonfat Dry Milk, Human	177,790	159,037	155,549	-12.5	-2.2
Dry Buttermilk, Total	13,090	11,437	9,485	-27.5	-17.1

¹ Revised.

² For dry products, shipments of bulk goods only.

³ Stocks held by manufacturers at all points and in transit.

Procedures and Reliability: Estimates included in this report are based on data provided each month by manufacturers of these products. In 32 States, the State Departments of Agriculture assist in collection of data, which eliminates duplicate reporting and reduces respondent burden. Data are collected by mail, personal and telephone interviews following the close of each month. There were 1,153 manufacturers that made one or more products in 2002. Each month, reports are generally received from all dairy plants in States with small numbers of plants. In States with large numbers of plants, survey procedures are designed to obtain monthly reports from all large plants and from a sample of small plants. Monthly estimates are based upon returns from about 70 percent of the plants which account for 70 to 90 percent of the total production of major dairy products.

Revision Policy: Monthly estimates are subject to revision the month following the preliminary estimates. Annual estimates are published in the "**Dairy Products**" report published each April which includes any revisions made to current and previous year. An attempt is made to get information from all plants for preparing these estimates.

The next "Dairy Products" report will be released at 3 p.m. ET on September 4, 2003.

The United States Department of Agriculture (USDA) prohibits discrimination in all its programs on the basis of race, color, national origin, gender, religion, age, disability, political beliefs, sexual orientation, and marital or family status. (Not all prohibited bases apply to all programs.) Persons with disabilities who require alternative means for communication of program information (braille, large print, audiotape, etc.) should contact the USDA's TARGET Center at 202-720-2600 (voice and TDD).

To file a complaint of discrimination, write USDA, Director, Office of Civil Rights, Room 326-W, Whitten Building, 1400 Independence Avenue, SW, Washington, D.C., 20250-9410, or call 202-720-5964 (voice or TDD). USDA is an equal opportunity provider and employer.

ACCESS TO REPORTS!!

For your convenience, there are several ways to obtain NASS reports, data products, and services:

INTERNET ACCESS

All NASS reports are available free of charge on the worldwide Internet. For access, connect to the Internet and go to the NASS Home Page at: <http://www.usda.gov/nass/>. Select "Today's Reports" or Publications and then Reports Calendar or Publications and then Search, by Title or Subject.

E-MAIL SUBSCRIPTION

All NASS reports are available by subscription free of charge direct to your e-mail address. Starting with the NASS Home Page at <http://www.usda.gov/nass/>, click on **Publications**, then click on the **Subscribe by E-mail** button which takes you to the page describing e-mail delivery of reports. Finally, click on **Go to the Subscription Page** and follow the instructions.

AUTOFAX ACCESS

NASSFax service is available for some reports from your fax machine. Please call 202-720-2000, using the handset attached to your fax. Respond to the voice prompts. Document 0411 is a list of available reports.

PRINTED REPORTS OR DATA PRODUCTS

CALL OUR TOLL-FREE ORDER DESK: 800-999-6779 (U.S. and Canada)
Other areas, please call 703-605-6220 FAX: 703-605-6900
(Visa, MasterCard, check, or money order acceptable for payment.)

ASSISTANCE

For **assistance** with general agricultural statistics or further information about NASS or its products or services, contact the **Agricultural Statistics Hotline** at **800-727-9540**, 7:30 a.m. to 4:00 p.m. ET, or e-mail: nass@nass.usda.gov.
