

Released September 4, 2003, by the National Agricultural Statistics Service (NASS), Agricultural Statistics Board, U.S. Department of Agriculture. For information on "Dairy Products" call Kevin Pautler at (202) 720-9168, office hours 7:30 a.m. to 4:00 p.m. ET.

July 2003 Highlights

Total cheese output (excluding cottage cheese) was 712 million pounds, 2.9 percent above July 2002 but 0.3 percent below June 2003.

American type cheese production totaled 300 million pounds, 1.8 percent below July 2002 and 2.4 percent below June 2003.

Butter production was 79.2 million pounds in July, 16.1 percent below July 2002 and 5.5 percent below June 2003.

Frozen dessert: (comparisons with July 2002)

Ice cream, Regular (hard) --- 82.5 million gallons, down 0.6 percent.

Ice cream, Lowfat (total) --- 42.1 million gallons, up 16.3 percent.

Ice cream, Nonfat (hard) --- 1.88 million gallons, up 21.6 percent.

Sherbet (hard) --- 5.22 million gallons, down 4.8 percent.

Frozen Yogurt (total) --- 5.85 million gallons, down 13.0 percent.

Nonfat dry milk for human food: (compared with July 2002) --- 120 million pounds, down 7.4 percent.

Dry whey products: (comparisons with July 2002)

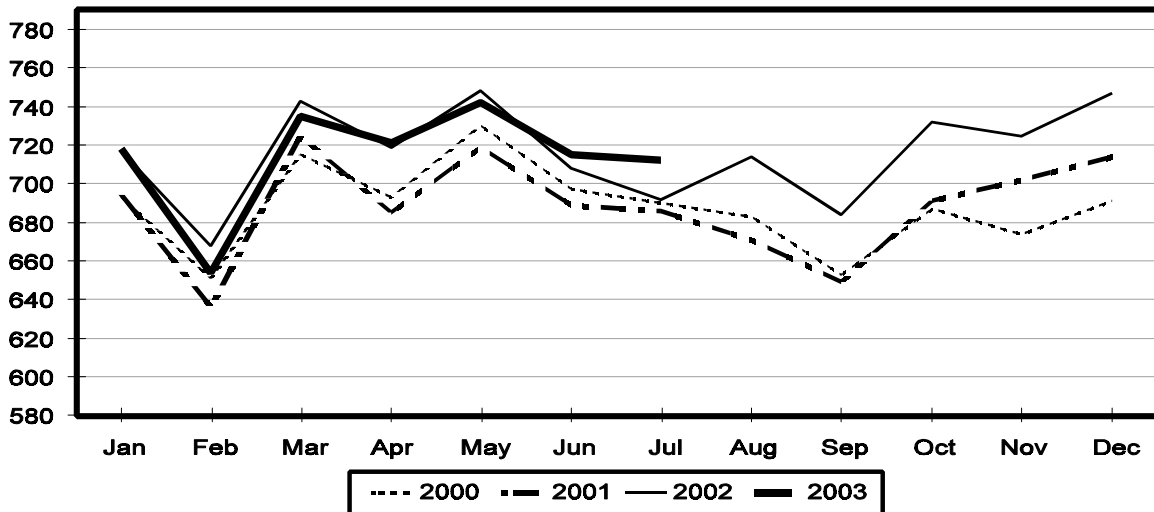
Dry whey, human --- 87.9 million pounds, up 1.8 percent.

Dry whey, animal --- 7.49 million pounds, up 26.0 percent.

Dry whey, total --- 95.4 million pounds, up 3.3 percent.

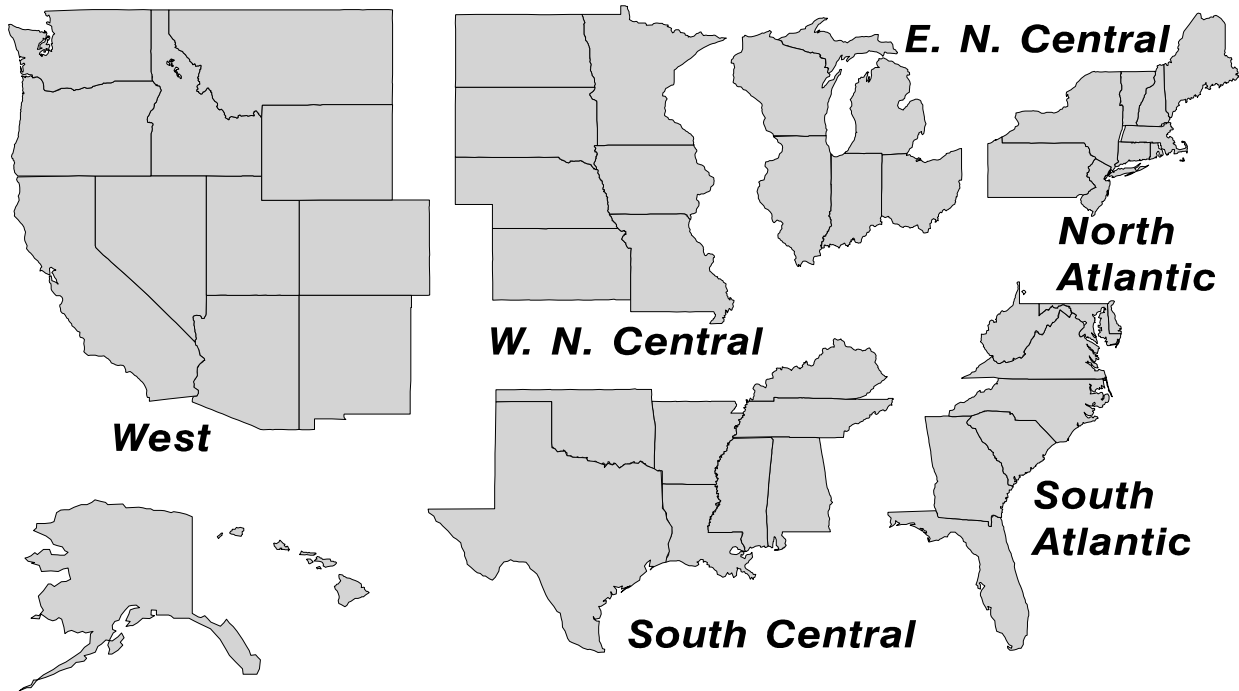
Total Cheese Production United States

Million Pounds



U. S. Geographic Regions Dairy Products

State totals are not published when fewer than 3 firms have reported or one firm comprises more than 60 percent of the State total. If we are not able to publish a region for confidentiality reasons, it will be combined with other regions when possible. For example, if North Atlantic can not be published, then it will be combined with South Atlantic to publish Atlantic. The West North Central and East North Central will be combined, if necessary, to form North Central. In the event that neither could be published, they may be combined with South Central to publish Central. Some tables will have only limited regions shown, therefore the regions may not add to the United States total.



**Dairy Products: Production by Product,
United States, July, 2002-2003**

Product	Jul 2002	Jun 2003 ¹	Jul 2003	Change From	
				Jul 2002	Jun 2003
	<i>1,000 Pounds</i>	<i>1,000 Pounds</i>	<i>1,000 Pounds</i>	<i>Percent</i>	<i>Percent</i>
Butter	94,409	83,836	79,205	-16.1	-5.5
Cheese					
American Types ²	305,409	307,233	299,877	-1.8	-2.4
Cheddar	232,613	231,985	225,153	-3.2	-2.9
Swiss	20,966	22,055	22,140	5.6	0.4
Brick and Muenster	7,716	7,495	7,476	-3.1	-0.3
Cream and Neufchatel	53,639	53,533	56,668	5.6	5.9
Hispanic	10,298	9,812	10,707	4.0	9.1
Mozzarella	222,293	237,956	235,672	6.0	-1.0
Other Italian Types	53,213	55,532	56,802	6.7	2.3
Total Italian Types	275,506	293,488	292,474	6.2	-0.3
All Other Types	18,661	20,917	22,855	22.5	9.3
Total	692,195	714,533	712,197	2.9	-0.3
Cottage Cheese, Curd ³	38,849	35,749	39,090	0.6	9.3
Cottage Cheese, Cream ⁴	32,588	32,392	34,023	4.4	5.0
Cottage Cheese, Lowfat ⁵	34,105	31,767	32,850	-3.7	3.4
Canned Evaporated and Condensed Whole Milk	52,454	56,688	54,000	2.9	-4.7
Dry Whole Milk	6,466	3,291	3,455	-46.6	5.0
Nonfat Dry Milk, Human	129,071	130,791	119,518	-7.4	-8.6
Dry Skim Milk, Animal	840	468	574	-31.7	22.6
Dry Buttermilk	3,296	2,866	2,396	-27.3	-16.4
Sour Cream ⁶		77,670	73,787		-5.0
Yogurt, Plain & Flavored	186,856	189,643	171,286	-8.3	-9.7
	<i>1,000 Gallons</i>	<i>1,000 Gallons</i>	<i>1,000 Gallons</i>	<i>Percent</i>	<i>Percent</i>
Frozen Products					
Ice Cream, Hard	82,999	83,405	82,512	-0.6	-1.1
Ice Cream, Lowfat, Hard	8,182	9,547	9,211	12.6	-3.5
Ice Cream, Lowfat, Soft	28,029	33,119	32,889	17.3	-0.7
Ice Cream, Lowfat, Total	36,211	42,666	42,100	16.3	-1.3
Ice Cream, Nonfat, Hard	1,546	1,935	1,880	21.6	-2.8
Sherbet, Hard	5,478	5,835	5,216	-4.8	-10.6
Water and Juice Ices	7,535	7,195	6,903	-8.4	-4.1
Frozen Yogurt, Total	6,722	5,906	5,845	-13.0	-1.0
Regular & Lowfat, Hard	2,230	1,939	2,042	-8.4	5.3
Nonfat, Hard	1,218	1,188	1,165	-4.4	-1.9
Other Frozen Dairy Products	833	855	760	-8.8	-11.1
Mix for Frozen Products					
Ice Cream Mix	50,739	48,750	49,516	-2.4	1.6
Ice Cream, Lowfat, Mix	22,333	23,736	23,429	4.9	-1.3
Ice Cream, Nonfat, Mix	1,005	1,305	1,274	26.8	-2.4
Sherbet Mix	3,782	4,088	3,644	-3.6	-10.9
Yogurt Mix	4,131	3,474	3,438	-16.8	-1.0

¹ Revised.

² Includes Cheddar, Colby, Monterey, and Jack.

³ Mostly used for processing into cream or lowfat cottage cheese.

⁴ Fat content 4 percent or more.

⁵ Fat content less than 4 percent.

⁶ Corrected totals due to errors in reporting unit: January 76,716; February 64,282; and March 75,689 million pounds.

**Whey and Modified Whey Products: Production, Stocks,
and Prices, United States, July, 2002-2003**

Product	Jul 2002	Jun 2003 ¹	Jul 2003	Change From	
				Jul 2002	Jun 2003
Production					
	<i>1,000 Pounds</i>	<i>1,000 Pounds</i>	<i>1,000 Pounds</i>	<i>Percent</i>	<i>Percent</i>
Condensed Whey, Solids Content ²					
Sweet-Type, Human	7,892	8,916	9,659	22.4	8.3
Sweet-Type, Animal ³					
Dry Whey Products					
Dry Whey, Human	86,411	88,685	87,927	1.8	-0.9
Dry Whey, Animal	5,947	6,478	7,492	26.0	15.7
Dry Whey, Total	92,358	95,163	95,419	3.3	0.3
Reduced Lactose and Minerals					
Human Food	8,846	3,397	4,394	-50.3	29.3
Animal Feed	3,529	3,257	3,327	-5.7	2.1
Lactose, Human and Animal	46,279	50,671	55,122	19.1	8.8
Whey					
Solids in Wet Blends, Animal ³	2,424	3,664	2,978	22.9	-18.7
Protein Concentrate, Human ⁷	23,030	23,280	23,789	3.3	2.2
Protein Concentrate, Animal ⁷	3,174	3,007	3,203	0.9	6.5
Manufacturers' Stocks End-of-Month ⁴					
	<i>1,000 Pounds</i>	<i>1,000 Pounds</i>	<i>1,000 Pounds</i>	<i>Percent</i>	<i>Percent</i>
Dry Whey Products					
Dry Whey, Human	30,408	46,872	42,931	41.2	-8.4
Dry Whey, Animal	2,785	1,721	3,289	18.1	91.1
Reduced Lactose and Minerals					
Human and Animal ⁵	11,754	9,863	9,991	-15.0	1.3
Lactose, Human and Animal	43,657	44,412	37,885	-13.2	-14.7
Whey Protein Concentrate, Human ⁷	29,712	28,907	26,148	-12.0	-9.5
Whey Protein Concentrate, Animal ⁷	1,218	1,829	1,470	20.7	-19.6
Manufacturers' Selling Price ⁶					
	<i>Cents per Pound</i>	<i>Cents per Pound</i>	<i>Cents per Pound</i>	<i>Cents Change</i>	<i>Cents Change</i>
Dry Whey, Animal	13.9	10.8	13.9		3.1

¹ Revised.

² Final marketable product only. Does not include quantity used or shipped to another plant for further processing into dry whey or modified whey products.

³ Not shown when fewer than three plants reported or individual plant operations could be disclosed

⁴ Stocks held by manufacturers at all points and in transit.

⁵ Reduced lactose and minerals stocks combined to avoid disclosure of individual operations.

⁶ Prices for bulk goods, f.o.b. plant. Average monthly prices reported by firms.

⁷ Whey Protein Concentrate, 25.0 to 89.9 percent.

**Dairy Products: Production by Product and Month,
United States, 2002-2003 ¹**

Product and Month	By Month			Cumulative		
	2002	2003	Change From 2002	2002	2003	Change From 2002
	<i>1,000 Pounds</i>	<i>1,000 Pounds</i>	<i>Percent</i>	<i>1,000 Pounds</i>	<i>1,000 Pounds</i>	<i>Percent</i>
Total Cheese ³						
Jan	717,454	717,763		717,454	717,763	
Feb	667,887	653,516	-2.2	1,385,341	1,371,279	-1.0
Mar	742,764	735,370	-1.0	2,128,105	2,106,649	-1.0
Apr	719,231	721,438	0.3	2,847,336	2,828,087	-0.7
May	748,263	742,179	-0.8	3,595,599	3,570,266	-0.7
Jun	708,284	714,533	0.9	4,303,883	4,284,799	-0.4
Jul	692,195	712,197	2.9	4,996,078	4,996,996	
Aug	714,314			5,710,392		
Sep	683,895			6,394,287		
Oct	732,157			7,126,444		
Nov	725,444			7,851,888		
Dec	747,161			8,599,049		
American Cheese						
Jan	317,538	319,517	0.6	317,538	319,517	0.6
Feb	292,857	285,649	-2.5	610,395	605,166	-0.9
Mar	322,054	318,491	-1.1	932,449	923,657	-0.9
Apr	320,432	308,599	-3.7	1,252,881	1,232,256	-1.6
May	329,921	320,185	-3.0	1,582,802	1,552,441	-1.9
Jun	313,998	307,233	-2.2	1,896,800	1,859,674	-2.0
Jul	305,409	299,877	-1.8	2,202,209	2,159,551	-1.9
Aug	309,640			2,511,849		
Sep	287,537			2,799,386		
Oct	297,840			3,097,226		
Nov	294,363			3,391,589		
Dec	317,426			3,709,015		
Cheddar Cheese						
Jan	246,385	247,786	0.6	246,385	247,786	0.6
Feb	227,721	218,823	-3.9	474,106	466,609	-1.6
Mar	253,112	242,232	-4.3	727,218	708,841	-2.5
Apr	253,909	234,713	-7.6	981,127	943,554	-3.8
May	258,360	240,929	-6.7	1,239,487	1,184,483	-4.4
Jun	243,222	231,985	-4.6	1,482,709	1,416,468	-4.5
Jul	232,613	225,153	-3.2	1,715,322	1,641,621	-4.3
Aug	231,669			1,946,991		
Sep	214,095			2,161,086		
Oct	219,119			2,380,205		
Nov	219,669			2,599,874		
Dec	240,203			2,840,077		

See footnote(s) at end of table.

--continued

**Dairy Products: Production by Product and Month,
United States, 2002-2003 ¹ (continued)**

Product and Month	By Month			Cumulative		
	2002	2003	Change From 2002	2002	2003	Change From 2002
	<i>1,000 Pounds</i>	<i>1,000 Pounds</i>	<i>Percent</i>	<i>1,000 Pounds</i>	<i>1,000 Pounds</i>	<i>Percent</i>
Italian Cheese ³						
Jan	296,654	293,345	-1.1	296,654	293,345	-1.1
Feb	278,013	272,616	-1.9	574,667	565,961	-1.5
Mar	307,324	305,440	-0.6	881,991	871,401	-1.2
Apr	289,919	303,372	4.6	1,171,910	1,174,773	0.2
May	305,072	307,923	0.9	1,476,982	1,482,696	0.4
Jun	280,388	293,488	4.7	1,757,370	1,776,184	1.1
Jul	275,506	292,474	6.2	2,032,876	2,068,658	1.8
Aug	285,840			2,318,716		
Sep	277,883			2,596,599		
Oct	300,818			2,897,417		
Nov	297,400			3,194,817		
Dec	311,661			3,506,478		
Mozzarella						
Jan	236,958	232,355	-1.9	236,958	232,355	-1.9
Feb	223,384	218,084	-2.4	460,342	450,439	-2.2
Mar	246,569	243,230	-1.4	706,911	693,669	-1.9
Apr	231,324	242,905	5.0	938,235	936,574	-0.2
May	247,659	252,404	1.9	1,185,894	1,188,978	0.3
Jun	228,778	237,956	4.0	1,414,672	1,426,934	0.9
Jul	222,293	235,672	6.0	1,636,965	1,662,606	1.6
Aug	229,911			1,866,876		
Sep	226,158			2,093,034		
Oct	237,294			2,330,328		
Nov	234,783			2,565,111		
Dec	248,601			2,813,712		
Other Italian						
Jan	59,696	60,990	2.2	59,696	60,990	2.2
Feb	54,629	54,532	-0.2	114,325	115,522	1.0
Mar	60,755	62,210	2.4	175,080	177,732	1.5
Apr	58,595	60,467	3.2	233,675	238,199	1.9
May	57,413	55,519	-3.3	291,088	293,718	0.9
Jun	51,610	55,532	7.6	342,698	349,250	1.9
Jul	53,213	56,802	6.7	395,911	406,052	2.6
Aug	55,929			451,840		
Sep	51,725			503,565		
Oct	63,524			567,089		
Nov	62,617			629,706		
Dec	63,060			692,766		

See footnote(s) at end of table.

--continued

**Dairy Products: Production by Product and Month,
United States, 2002-2003 ¹ (continued)**

Product and Month	By Month			Cumulative		
	2002	2003	Change From 2002	2002	2003	Change From 2002
	<i>1,000 Pounds</i>	<i>1,000 Pounds</i>	<i>Percent</i>	<i>1,000 Pounds</i>	<i>1,000 Pounds</i>	<i>Percent</i>
Butter						
Jan	140,069	141,440	1.0	140,069	141,440	1.0
Feb	124,231	128,362	3.3	264,300	269,802	2.1
Mar	127,695	126,338	-1.1	391,995	396,140	1.1
Apr	131,605	122,715	-6.8	523,600	518,855	-0.9
May	125,484	114,678	-8.6	649,084	633,533	-2.4
Jun	95,818	83,836	-12.5	744,902	717,369	-3.7
Jul	94,409	79,205	-16.1	839,311	796,574	-5.1
Aug	88,883			928,194		
Sep	92,818			1,021,012		
Oct	102,613			1,123,625		
Nov	103,932			1,227,557		
Dec	127,591			1,355,148		
Nonfat Dry Milk, Human						
Jan	128,675	133,758	4.0	128,675	133,758	4.0
Feb	127,707	130,355	2.1	256,382	264,113	3.0
Mar	153,057	146,276	-4.4	409,439	410,389	0.2
Apr	164,159	150,404	-8.4	573,598	560,793	-2.2
May	163,379	154,168	-5.6	736,977	714,961	-3.0
Jun	152,982	130,791	-14.5	889,959	845,752	-5.0
Jul	129,071	119,518	-7.4	1,019,030	965,270	-5.3
Aug	117,870			1,136,900		
Sep	97,191			1,234,091		
Oct	103,357			1,337,448		
Nov	99,049			1,436,497		
Dec	132,494			1,568,991		
Total Dry Whey ²						
Jan	90,071	97,664	8.4	90,071	97,664	8.4
Feb	84,430	88,712	5.1	174,501	186,376	6.8
Mar	96,405	101,088	4.9	270,906	287,464	6.1
Apr	93,868	95,034	1.2	364,774	382,498	4.9
May	98,417	100,893	2.5	463,191	483,391	4.4
Jun	93,720	95,163	1.5	556,911	578,554	3.9
Jul	92,358	95,419	3.3	649,269	673,973	3.8
Aug	93,820			743,089		
Sep	89,639			832,728		
Oct	93,177			925,905		
Nov	91,599			1,017,504		
Dec	98,268			1,115,772		

See footnote(s) at end of table.

--continued

**Dairy Products: Production by Product and Month,
United States, 2002-2003 ¹ (continued)**

Product and Month	By Month			Cumulative		
	2002	2003	Change From 2002	2002	2003	Change From 2002
	<i>1,000 Pounds</i>	<i>1,000 Pounds</i>	<i>Percent</i>	<i>1,000 Pounds</i>	<i>1,000 Pounds</i>	<i>Percent</i>
Cream Cottage Cheese						
Jan	30,045	31,386	4.5	30,045	31,386	4.5
Feb	29,034	29,155	0.4	59,079	60,541	2.5
Mar	31,607	31,991	1.2	90,686	92,532	2.0
Apr	31,454	33,949	7.9	122,140	126,481	3.6
May	32,966	32,767	-0.6	155,106	159,248	2.7
Jun	30,787	32,392	5.2	185,893	191,640	3.1
Jul	32,588	34,023	4.4	218,481	225,663	3.3
Aug	33,753			252,234		
Sep	31,945			284,179		
Oct	31,876			316,055		
Nov	27,764			343,819		
Dec	28,580			372,399		
Lowfat Cottage Cheese						
Jan	29,525	30,397	3.0	29,525	30,397	3.0
Feb	29,344	29,345		58,869	59,742	1.5
Mar	31,999	32,459	1.4	90,868	92,201	1.5
Apr	31,091	33,234	6.9	121,959	125,435	2.9
May	34,658	32,398	-6.5	156,617	157,833	0.8
Jun	29,266	31,767	8.5	185,883	189,600	2.0
Jul	34,105	32,850	-3.7	219,988	222,450	1.1
Aug	34,778			254,766		
Sep	31,505			286,271		
Oct	32,349			318,620		
Nov	27,292			345,912		
Dec	28,384			374,296		
	<i>1,000 Gallons</i>	<i>1,000 Gallons</i>	<i>Percent</i>	<i>1,000 Gallons</i>	<i>1,000 Gallons</i>	<i>Percent</i>
Ice Cream, Hard						
Jan	69,696	67,337	-3.4	69,696	67,337	-3.4
Feb	69,293	70,615	1.9	138,989	137,952	-0.7
Mar	75,823	73,595	-2.9	214,812	211,547	-1.5
Apr	80,364	79,402	-1.2	295,176	290,949	-1.4
May	77,609	79,138	2.0	372,785	370,087	-0.7
Jun	80,779	83,405	3.3	453,564	453,492	
Jul	82,999	82,512	-0.6	536,563	536,004	-0.1
Aug	77,896			614,459		
Sep	69,894			684,353		
Oct	70,501			754,854		
Nov	57,374			812,228		
Dec	53,903			866,131		

See footnote(s) at end of table.

--continued

**Dairy Products: Production by Product and Month,
United States, 2002-2003¹ (continued)**

Product and Month	By Month			Cumulative		
	2002	2003	Change From 2002	2002	2003	Change From 2002
	<i>1,000 Gallons</i>	<i>1,000 Gallons</i>	<i>Percent</i>	<i>1,000 Gallons</i>	<i>1,000 Gallons</i>	<i>Percent</i>
Ice Cream, Lowfat						
Jan	23,520	25,274	7.5	23,520	25,274	7.5
Feb	25,096	25,853	3.0	48,616	51,127	5.2
Mar	30,861	35,416	14.8	79,477	86,543	8.9
Apr	34,564	37,557	8.7	114,041	124,100	8.8
May	37,863	40,445	6.8	151,904	164,545	8.3
Jun	37,347	42,666	14.2	189,251	207,211	9.5
Jul	36,211	42,100	16.3	225,462	249,311	10.6
Aug	34,033			259,495		
Sep	28,540			288,035		
Oct	27,696			315,731		
Nov	22,428			338,159		
Dec	23,428			361,587		
Ice Cream, NF, Hard						
Jan	1,665	1,584	-4.9	1,665	1,584	-4.9
Feb	1,350	1,689	25.1	3,015	3,273	8.6
Mar	1,858	1,580	-15.0	4,873	4,853	-0.4
Apr	1,693	1,908	12.7	6,566	6,761	3.0
May	1,566	1,875	19.7	8,132	8,636	6.2
Jun	1,483	1,935	30.5	9,615	10,571	9.9
Jul	1,546	1,880	21.6	11,161	12,451	11.6
Aug	1,534			12,695		
Sep	1,423			14,118		
Oct	1,572			15,690		
Nov	1,451			17,141		
Dec	1,250			18,391		
Sherbet, Hard						
Jan	3,731	4,056	8.7	3,731	4,056	8.7
Feb	3,904	4,406	12.9	7,635	8,462	10.8
Mar	4,775	5,011	4.9	12,410	13,473	8.6
Apr	5,047	5,438	7.7	17,457	18,911	8.3
May	5,250	5,319	1.3	22,707	24,230	6.7
Jun	5,225	5,835	11.7	27,932	30,065	7.6
Jul	5,478	5,216	-4.8	33,410	35,281	5.6
Aug	4,629			38,039		
Sep	4,124			42,163		
Oct	4,058			46,221		
Nov	2,934			49,155		
Dec	3,189			52,344		

See footnote(s) at end of table.

--continued

**Dairy Products: Production by Product and Month,
United States, 2002-2003¹ (continued)**

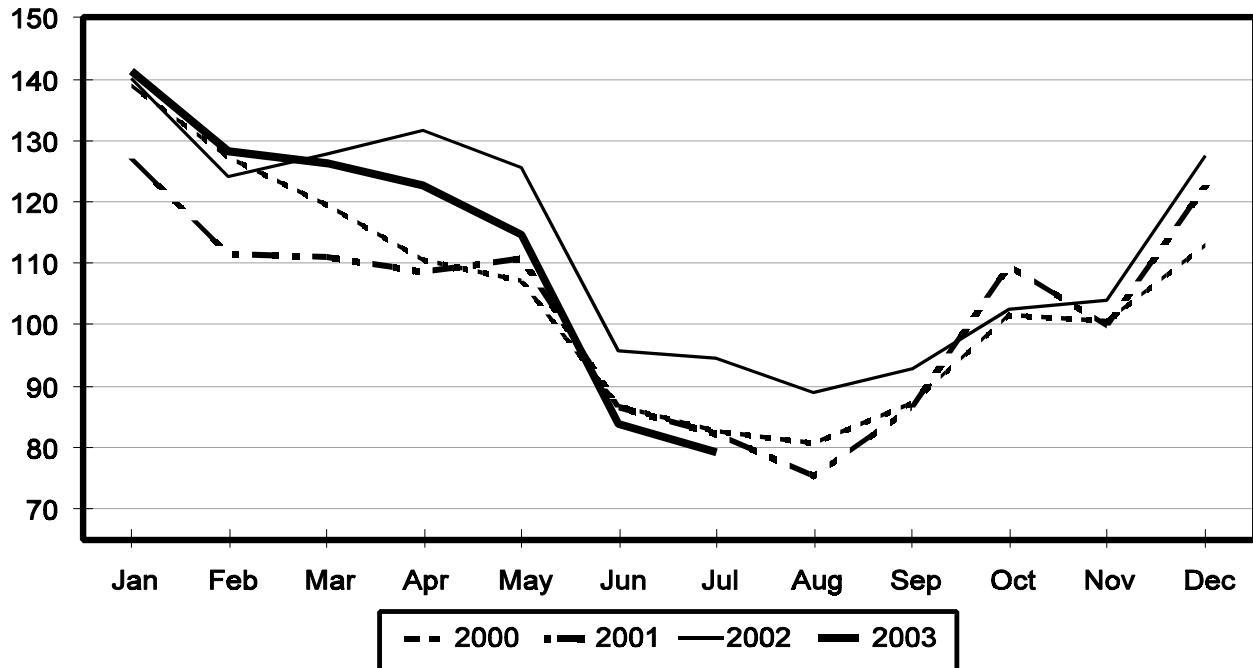
Product and Month	By Month			Cumulative		
	2002	2003	Change From 2002	2002	2003	Change From 2002
	<i>1,000 Gallons</i>	<i>1,000 Gallons</i>	<i>Percent</i>	<i>1,000 Gallons</i>	<i>1,000 Gallons</i>	<i>Percent</i>
Frozen Yogurt						
Jan	5,715	5,719	0.1	5,715	5,719	0.1
Feb	6,012	5,505	-8.4	11,727	11,224	-4.3
Mar	6,696	5,794	-13.5	18,423	17,018	-7.6
Apr	7,156	6,370	-11.0	25,579	23,388	-8.6
May	6,932	6,482	-6.5	32,511	29,870	-8.1
Jun	6,498	5,906	-9.1	39,009	35,776	-8.3
Jul	6,722	5,845	-13.0	45,731	41,621	-9.0
Aug	6,619			52,350		
Sep	6,046			58,396		
Oct	5,842			64,238		
Nov	4,937			69,175		
Dec	4,231			73,406		

¹ June 2003 data revised.

² Excludes all modified dry whey products.

Total Butter Production United States

Million Pounds



**Total Cheese, Excluding Cottage Cheese: Production by
State and United States, July 2002-2003**

State	Jul 2002	Jun ¹ 2003	Jul 2003	Change From	
				Jul 2002	Jun 2003
	<i>1,000 Pounds</i>	<i>1,000 Pounds</i>	<i>1,000 Pounds</i>	<i>Percent</i>	<i>Percent</i>
CA	142,909	155,503	158,107	10.6	1.7
ID	49,814	51,012	54,412	9.2	6.7
IL	7,850	7,714	7,913	0.8	2.6
IA	22,584	19,447	18,507	-18.1	-4.8
MA	115	73	64	-44.3	-12.3
MN	45,733	52,203	44,013	-3.8	-15.7
MO	8,576	8,238	7,703	-10.2	-6.5
NY	55,464	54,051	55,015	-0.8	1.8
OH	12,153	14,208	14,306	17.7	0.7
PA	27,717	32,066	32,102	15.8	0.1
SD	12,463	13,136	13,060	4.8	-0.6
UT	6,063	6,822	6,408	5.7	-6.1
WA	12,684				
WI	180,985	186,512	187,742	3.7	0.7
Oth Sts ²	107,085	113,548	112,845	5.4	-0.6
US	692,195	714,533	712,197	2.9	-0.3
N Atlantic	101,621	101,649	104,022	2.4	2.3
S Atlantic	3,447	3,047	3,410	-1.1	11.9
E N Central	214,189	222,658	223,375	4.3	0.3
W N Central	97,182	95,179	84,573	-13.0	-11.1
S Central	5,638	7,789	5,825	3.3	-25.2
West	270,118	284,211	290,992	7.7	2.4

¹ Revised.

² States not shown when fewer than 3 plants reported or individual plant operations could be disclosed. Percent change shown only when comparable States are included in the calculation.

American Cheese: Production by State and United States, July 2002-2003

State	Jul 2002	Jun ¹ 2003	Jul 2003	Change From	
				Jul 2002	Jun 2003
	<i>1,000 Pounds</i>	<i>1,000 Pounds</i>	<i>1,000 Pounds</i>	<i>Percent</i>	<i>Percent</i>
CA	67,345	69,133	68,454	1.6	-1.0
ID	41,829	37,349	39,854	-4.7	6.7
IA	11,199	10,481	10,151	-9.4	-3.1
MN	43,641	50,547	42,474	-2.7	-16.0
NY	8,109	8,146	7,425	-8.4	-8.9
OH	2,405	3,160	3,113	29.4	-1.5
OR	7,972	8,090	8,477	6.3	4.8
SD	6,243	7,043	7,268	16.4	3.2
WA	12,657				
WI	70,955	67,300	66,920	-5.7	-0.6
Oth Sts ²	33,054	45,984	45,741	38.4	-0.5
US	305,409	307,233	299,877	-1.8	-2.4
Atlantic	13,338	12,973	13,461	0.9	3.8
E N Central	74,698	71,388	71,263	-4.6	-0.2
W N Central	62,216	69,041	60,238	-3.2	-12.8
S Central	3,675	5,002	3,670	-0.1	-26.6
West	151,482	148,829	151,245	-0.2	1.6

¹ Revised.

² States not shown when fewer than 3 plants reported or individual plant operations could be disclosed. Percent change shown only when comparable States are included in the calculation.

Cheddar Cheese: Production by State and United States, July 2002-2003

State	Jul 2002	Jun ¹ 2003	Jul 2003	Change From	
				Jul 2002	Jun 2003
	<i>1,000 Pounds</i>	<i>1,000 Pounds</i>	<i>1,000 Pounds</i>	<i>Percent</i>	<i>Percent</i>
CA	46,072	47,366	44,990	-2.3	-5.0
ID	20,216	16,430	19,265	-4.7	17.3
MN	40,801	46,944	38,457	-5.7	-18.1
NY	8,010	8,000	7,300	-8.9	-8.8
SD	3,822	5,074	5,414	41.7	6.7
WA	10,402				
WI	57,806	52,100	53,220	-7.9	2.1
Oth Sts ²	45,484	56,071	56,507	24.2	0.8
US	232,613	231,985	225,153	-3.2	-2.9
Atlantic	13,090	12,422	12,856	-1.8	3.5
E N Cen	59,961	54,400	55,458	-7.5	1.9
W N Cen	51,334	59,470	50,267	-2.1	-15.5
S Cen	3,675	4,993	3,670	-0.1	-26.5
West	104,553	100,700	102,902	-1.6	2.2

¹ Revised.

² States not shown when fewer than 3 plants reported or individual plant operations could be disclosed. Percent change shown only when comparable States are included in the calculation.

Mozzarella Cheese: Production by State and United States, July 2002-2003

State	Jul 2002	Jun ¹ 2003	Jul 2003	Change From	
				Jul 2002	Jun 2003
	<i>1,000 Pounds</i>	<i>1,000 Pounds</i>	<i>1,000 Pounds</i>	<i>Percent</i>	<i>Percent</i>
CA	58,269	65,869	67,940	16.6	3.1
NY	16,227	16,955	17,111	5.4	0.9
PA	15,605	17,174	15,569	-0.2	-9.3
WI	59,209	65,800	65,450	10.5	-0.5
Oth Sts ²	72,983	72,158	69,602	-4.6	-3.5
US	222,293	237,956	235,672	6.0	-1.0
Atlantic ³	42,277	42,843	41,412	-2.0	-3.3
E N Central	70,910	79,104	77,640	9.5	-1.9
West	93,726	105,117	107,261	14.4	2.0

¹ Revised.

² States not shown when fewer than 3 plants reported or individual plant operations could be disclosed. Percent change shown only when comparable States are included in the calculation.

³ Region totals may not add to U.S. when compiled regions could not be disclosed.

Butter: Production by State and United States, July 2002-2003

State	Jul 2002	Jun ¹ 2003	Jul 2003	Change From	
				Jul 2002	Jun 2003
	<i>1,000 Pounds</i>	<i>1,000 Pounds</i>	<i>1,000 Pounds</i>	<i>Percent</i>	<i>Percent</i>
CA	27,865	23,009	22,696	-18.6	-1.4
NY	2,000	1,570	1,686	-15.7	7.4
PA	5,264	5,453	3,540	-32.8	-35.1
WA	8,987				
WI	23,171	20,700	17,950	-22.5	-13.3
Oth Sts ²	27,122	33,104	33,333	22.9	0.7
US	94,409	83,836	79,205	-16.1	-5.5
N Atlantic ³	9,665	9,668	7,594	-21.4	-21.5
E N Central	25,389	22,435	19,872	-21.7	-11.4
W N Central	7,752	7,357	6,497	-16.2	-11.7
West	42,582	36,833	36,084	-15.3	-2.0

¹ Revised.

² States not shown when fewer than 3 plants reported or individual plant operations could be disclosed. Percent change shown only when comparable States are included in the calculation.

³ Region totals may not add to U.S. when compiled regions could not be disclosed.

**Nonfat Dry Milk, Human: Production by State
and United States, July 2002-2003**

State	Jul 2002	Jun ¹ 2003	Jul 2003	Change From	
				Jul 2002	Jun 2003
	<i>1,000 Pounds</i>	<i>1,000 Pounds</i>	<i>1,000 Pounds</i>	<i>Percent</i>	<i>Percent</i>
CA	63,834	58,800	55,015	-13.8	-6.4
ID	8,110	5,262	6,078	-25.1	15.5
WA	17,204				
Oth Sts ²	39,923	66,729	58,425	46.3	-12.4
US	129,071	130,791	119,518	-7.4	-8.6
Atlantic	11,605	14,586	12,643	8.9	-13.3
E N Central	3,958	4,366	3,587	-9.4	-17.8
W N Central	5,747	6,838	5,403	-6.0	-21.0
S Central	5,164	7,127	5,838	13.1	-18.1
West	102,597	97,874	92,047	-10.3	-6.0

¹ Revised.

² States not shown when fewer than 3 plants reported or individual plant operations could be disclosed. Percent change shown only when comparable States are included in the calculation.

**Dry Whey, Human: Production by State
and United States, July 2002-2003**

State	Jul 2002	Jun ¹ 2003	Jul 2003	Change From	
				Jul 2002	Jun 2003
	<i>1,000 Pounds</i>	<i>1,000 Pounds</i>	<i>1,000 Pounds</i>	<i>Percent</i>	<i>Percent</i>
CA	11,642	10,459	9,522	-18.2	-9.0
MN	6,283	9,371	8,926	42.1	-4.7
NY	10,287	10,197	11,322	10.1	11.0
PA	9,963	8,317	7,082	-28.9	-14.8
WA	8,355				
WI	24,716	26,458	25,870	4.7	-2.2
Oth Sts ²	15,165	23,883	25,205	66.2	5.5
US	86,411	88,685	87,927	1.8	-0.9
Atlantic	20,250	18,514	18,404	-9.1	-0.6
Central	42,121	46,881	46,134	9.5	-1.6
West	24,040	23,290	23,389	-2.7	0.4

¹ Revised.

² States not shown when fewer than 3 plants reported or individual plant operations could be disclosed. Percent change shown only when comparable States are included in the calculation.

Ice Cream, Hard: Production by State and United States, July 2002-2003

State	Jul 2002	Jun ¹ 2003	Jul 2003	Change From	
				Jul 2002	Jun 2003
	<i>1,000 Gallons</i>	<i>1,000 Gallons</i>	<i>1,000 Gallons</i>	<i>Percent</i>	<i>Percent</i>
CA	12,466	13,421	11,485	-7.9	-14.4
FL	1,502	1,900	2,050	36.5	7.9
IL	2,555	2,945	3,028	18.5	2.8
IN	6,982	6,988	6,944	-0.5	-0.6
MD	2,051	1,864	1,854	-9.6	-0.5
MA	6,680	5,564	7,001	4.8	25.8
MI	2,059	1,696	1,640	-20.3	-3.3
MN	4,058	4,107	3,539	-12.8	-13.8
MO	1,420	1,485	1,506	6.1	1.4
NY	2,712	3,000	3,300	21.7	10.0
NC	2,031	1,656	1,731	-14.8	4.5
OH	3,284	2,969	2,921	-11.1	-1.6
OR	1,347	1,222	1,329	-1.3	8.8
PA	4,764	4,208	4,905	3.0	16.6
SD	5	2	4	-20.0	100.0
TN	1,082	1,549	1,745	61.3	12.7
TX	4,513	4,206	4,531	0.4	7.7
UT	1,384	1,736	1,402	1.3	-19.2
WA	1,718	1,150	1,262	-26.5	9.7
Oth Sts ²	20,386	21,737	20,335	-0.3	-6.4
US	82,999	83,405	82,512	-0.6	-1.1
N Atlantic	16,978	15,644	18,079	6.5	15.6
S Atlantic	7,230	6,748	6,885	-4.8	2.0
E N Central	16,041	15,513	15,537	-3.1	0.2
W N Central	12,079	14,562	12,066	-0.1	-17.1
S Central	9,908	9,857	10,561	6.6	7.1
West	20,763	21,081	19,384	-6.6	-8.0

¹ Revised.

² States not shown when fewer than 3 plants reported or individual plant operations could be disclosed. Percent change shown only when comparable States are included in the calculation.

**Canned Milk and Dry Milk Products: Manufacturers' Shipments,
Stocks, and Selling Prices, July, 2002-2003**

Product	Jul 2002	Jun 2003 ¹	Jul 2003	Change From	
				Jul 2002	Jun 2003
	Manufacturers' Shipments ²				
	<i>1,000 Pounds</i>	<i>1,000 Pounds</i>	<i>1,000 Pounds</i>	<i>Percent</i>	<i>Percent</i>
Nonfat Dry Milk, Human	175,549	159,625	164,453	-6.3	3.0
	Manufacturers' Stocks End-of-Month ³				
	<i>1,000 Pounds</i>	<i>1,000 Pounds</i>	<i>1,000 Pounds</i>	<i>Percent</i>	<i>Percent</i>
Canned Evaporated and Condensed Whole Milk	80,048	76,098	85,905	7.3	12.9
Nonfat Dry Milk, Human	152,397	152,094	125,771	-17.5	-17.3
Dry Buttermilk, Total	13,119	8,786	5,417	-58.7	-38.3

¹ Revised.

² For dry products, shipments of bulk goods only.

³ Stocks held by manufacturers at all points and in transit.

Procedures and Reliability: Estimates included in this report are based on data provided each month by manufacturers of these products. In 32 States, the State Departments of Agriculture assist in collection of data, which eliminates duplicate reporting and reduces respondent burden. Data are collected by mail, personal and telephone interviews following the close of each month. There were 1,153 manufacturers that made one or more products in 2002. Each month, reports are generally received from all dairy plants in States with small numbers of plants. In States with large numbers of plants, survey procedures are designed to obtain monthly reports from all large plants and from a sample of small plants. Monthly estimates are based upon returns from about 70 percent of the plants which account for 70 to 90 percent of the total production of major dairy products.

Revision Policy: Monthly estimates are subject to revision the month following the preliminary estimates. Annual estimates are published in the "**Dairy Products**" report published each April which includes any revisions made to current and previous year. An attempt is made to get information from all plants for preparing these estimates.

The next "Dairy Products" report will be released at 3 p.m. ET on October 3, 2003.

The United States Department of Agriculture (USDA) prohibits discrimination in all its programs on the basis of race, color, national origin, gender, religion, age, disability, political beliefs, sexual orientation, and marital or family status. (Not all prohibited bases apply to all programs.) Persons with disabilities who require alternative means for communication of program information (braille, large print, audiotape, etc.) should contact the USDA's TARGET Center at 202-720-2600 (voice and TDD).

To file a complaint of discrimination, write USDA, Director, Office of Civil Rights, Room 326-W, Whitten Building, 1400 Independence Avenue, SW, Washington, D.C., 20250-9410, or call 202-720-5964 (voice or TDD). USDA is an equal opportunity provider and employer.

ACCESS TO REPORTS!!

For your convenience, there are several ways to obtain NASS reports, data products, and services:

INTERNET ACCESS

All NASS reports are available free of charge on the worldwide Internet. For access, connect to the Internet and go to the NASS Home Page at: <http://www.usda.gov/nass/>. Select "Today's Reports" or Publications and then Reports Calendar or Publications and then Search, by Title or Subject.

E-MAIL SUBSCRIPTION

All NASS reports are available by subscription free of charge direct to your e-mail address. Starting with the NASS Home Page at <http://www.usda.gov/nass/>, click on **Publications**, then click on the **Subscribe by E-mail** button which takes you to the page describing e-mail delivery of reports. Finally, click on **Go to the Subscription Page** and follow the instructions.

AUTOFAX ACCESS

NASSFax service is available for some reports from your fax machine. Please call 202-720-2000, using the handset attached to your fax. Respond to the voice prompts. Document 0411 is a list of available reports.

PRINTED REPORTS OR DATA PRODUCTS

CALL OUR TOLL-FREE ORDER DESK: 800-999-6779 (U.S. and Canada)
Other areas, please call 703-605-6220 FAX: 703-605-6900
(Visa, MasterCard, check, or money order acceptable for payment.)

ASSISTANCE

For **assistance** with general agricultural statistics or further information about NASS or its products or services, contact the **Agricultural Statistics Hotline** at **800-727-9540**, 7:30 a.m. to 4:00 p.m. ET, or e-mail: nass@nass.usda.gov.
