

Released October 3, 2003, by the National Agricultural Statistics Service (NASS), Agricultural Statistics Board, U.S. Department of Agriculture. For information on "Dairy Products" call Kevin Pautler at (202) 720-9168, office hours 7:30 a.m. to 4:00 p.m. ET.

## August 2003 Highlights

**Total cheese** output (excluding cottage cheese) was 708 million pounds, 0.8 percent below August 2002 and 1.2 percent below July 2003.

**American type cheese** production totaled 302 million pounds, 2.4 percent below August 2002 and 1.5 percent below July 2003.

**Butter** production was 70.2 million pounds in August, 21.1 percent below August 2002 and 11.8 percent below July 2003.

**Frozen dessert:** (comparisons with August 2002)

Ice cream, Regular (hard) --- 75.6 million gallons, down 3.0 percent.

Ice cream, Lowfat (total) --- 38.5 million gallons, up 13.2 percent.

Ice cream, Nonfat (hard) --- 1.53 million gallons, unchanged.

Sherbet (hard) --- 4.70 million gallons, up 1.6 percent.

Frozen Yogurt (total) --- 5.64 million gallons, down 14.8 percent.

**Nonfat dry milk for human food:** (compared with August 2002) --- 100 million pounds, down 14.9 percent.

**Dry whey products:** (comparisons with August 2002)

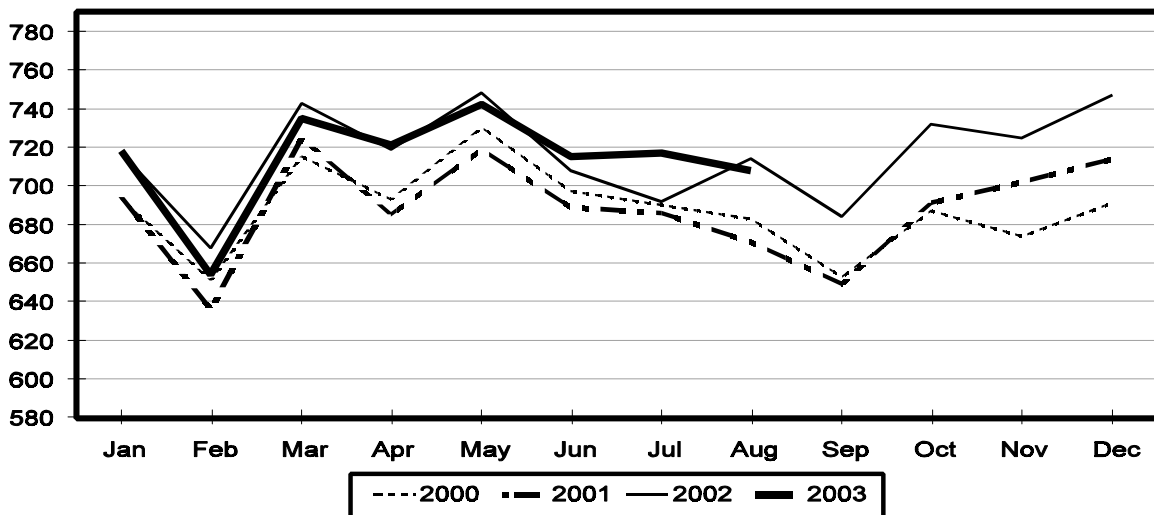
Dry whey, human --- 83.4 million pounds, down 5.2 percent.

Dry whey, animal --- 7.93 million pounds, up 36.2 percent.

Dry whey, total --- 91.3 million pounds, down 2.7 percent.

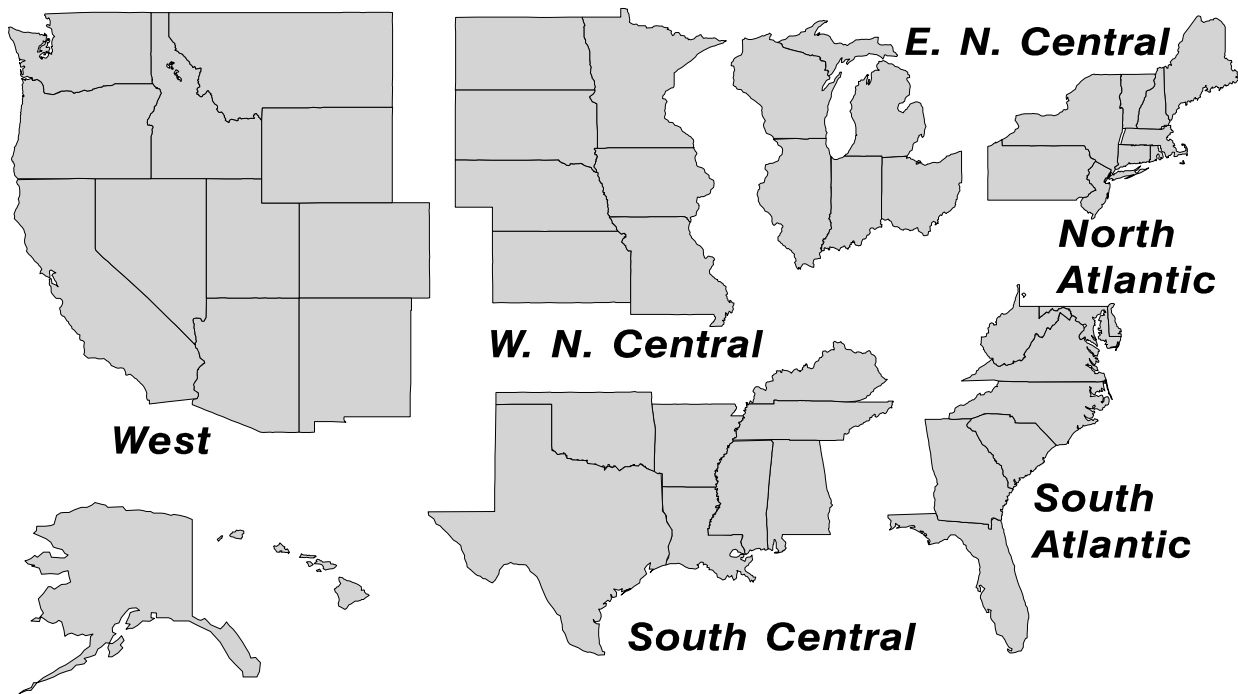
## Total Cheese Production United States

Million Pounds



## U. S. Geographic Regions Dairy Products

State totals are not published when fewer than 3 firms have reported or one firm comprises more than 60 percent of the State total. If we are not able to publish a region for confidentiality reasons, it will be combined with other regions when possible. For example, if North Atlantic can not be published, then it will be combined with South Atlantic to publish Atlantic. The West North Central and East North Central will be combined, if necessary, to form North Central. In the event that neither could be published, they may be combined with South Central to publish Central. Some tables will have only limited regions shown, therefore the regions may not add to the United States total.



**Dairy Products: Production by Product,  
United States, August, 2002-2003**

Product	Aug 2002	Jul 2003 <sup>1</sup>	Aug 2003	Change From	
				Aug 2002	Jul 2003
	<i>1,000 Pounds</i>	<i>1,000 Pounds</i>	<i>1,000 Pounds</i>	<i>Percent</i>	<i>Percent</i>
Butter	88,883	79,546	70,150	-21.1	-11.8
Cheese					
American Types <sup>2</sup>	309,640	306,545	302,061	-2.4	-1.5
Cheddar	231,669	231,588	227,915	-1.6	-1.6
Swiss	20,737	22,140	20,633	-0.5	-6.8
Brick and Muenster	7,495	7,485	6,231	-16.9	-16.8
Cream and Neufchatel	62,465	56,831	58,399	-6.5	2.8
Hispanic	10,354	10,789	10,065	-2.8	-6.7
Mozzarella	229,911	235,700	235,537	2.4	-0.1
Other Italian Types	55,929	56,961	56,250	0.6	-1.2
Total Italian Types	285,840	292,661	291,787	2.1	-0.3
All Other Types	17,783	20,760	19,239	8.2	-7.3
Total	714,314	717,211	708,415	-0.8	-1.2
Cottage Cheese, Curd <sup>3</sup>	40,060	40,142	39,997	-0.2	-0.4
Cottage Cheese, Cream <sup>4</sup>	33,753	34,497	33,136	-1.8	-3.9
Cottage Cheese, Lowfat <sup>5</sup>	34,778	33,036	33,673	-3.2	1.9
Canned Evaporated and Condensed Whole Milk	49,229	55,230	47,026	-4.5	-14.9
Dry Whole Milk	3,255	3,460	2,634	-19.1	-23.9
Nonfat Dry Milk, Human	117,870	121,976	100,257	-14.9	-17.8
Dry Skim Milk, Animal	635	831	443	-30.2	-46.7
Dry Buttermilk	3,226	2,353	2,417	-25.1	2.7
Sour Cream <sup>6</sup>		76,975	75,708		-1.6
Yogurt, Plain & Flavored	184,534	174,445	192,117	4.1	10.1
	<i>1,000 Gallons</i>	<i>1,000 Gallons</i>	<i>1,000 Gallons</i>	<i>Percent</i>	<i>Percent</i>
Frozen Products					
Ice Cream, Hard	77,896	82,942	75,593	-3.0	-8.9
Ice Cream, Lowfat, Hard	8,806	8,896	8,326	-5.5	-6.4
Ice Cream, Lowfat, Soft	25,227	33,221	30,194	19.7	-9.1
Ice Cream, Lowfat, Total	34,033	42,117	38,520	13.2	-8.5
Ice Cream, Nonfat, Hard	1,534	1,935	1,534		-20.7
Sherbet, Hard	4,629	5,345	4,701	1.6	-12.0
Water and Juice Ices	5,879	6,974	5,081	-13.6	-27.1
Frozen Yogurt, Total	6,619	5,853	5,637	-14.8	-3.7
Regular & Lowfat, Hard	1,997	1,946	1,840	-7.9	-5.4
Nonfat, Hard	1,275	1,229	1,154	-9.5	-6.1
Other Frozen Dairy Products	776	828	694	-10.6	-16.2
Mix for Frozen Products					
Ice Cream Mix	46,787	50,460	43,956	-6.1	-12.9
Ice Cream, Lowfat, Mix	20,669	23,451	21,441	3.7	-8.6
Ice Cream, Nonfat, Mix	992	1,372	952	-4.0	-30.6
Sherbet Mix	3,435	3,722	3,224	-6.1	-13.4
Yogurt Mix	3,963	3,443	3,316	-16.3	-3.7

<sup>1</sup> Revised.

<sup>2</sup> Includes Cheddar, Colby, Monterey, and Jack.

<sup>3</sup> Mostly used for processing into cream or lowfat cottage cheese.

<sup>4</sup> Fat content 4 percent or more.

<sup>5</sup> Fat content less than 4 percent.

<sup>6</sup> Corrected totals due to errors in reporting unit: January 76,716; February 64,282; and March 75,689 million pounds.

**Whey and Modified Whey Products: Production, Stocks,  
and Prices, United States, August, 2002-2003**

Product	Aug 2002	Jul 2003 <sup>1</sup>	Aug 2003	Change From	
				Aug 2002	Jul 2003
<b>Production</b>					
	<i>1,000 Pounds</i>	<i>1,000 Pounds</i>	<i>1,000 Pounds</i>	<i>Percent</i>	<i>Percent</i>
Condensed Whey, Solids Content <sup>2</sup>					
Sweet-Type, Human	8,669	9,659	9,159	5.7	-5.2
Sweet-Type, Animal <sup>3</sup>					
Dry Whey Products					
Dry Whey, Human	87,998	89,037	83,388	-5.2	-6.3
Dry Whey, Animal	5,822	7,811	7,928	36.2	1.5
Dry Whey, Total	93,820	96,848	91,316	-2.7	-5.7
Reduced Lactose and Minerals					
Human Food	6,858	4,394	3,902	-43.1	-11.2
Animal Feed	3,374	3,327	3,116	-7.6	-6.3
Lactose, Human and Animal	46,364	55,380	49,681	7.2	-10.3
Whey					
Solids in Wet Blends, Animal <sup>3</sup>	3,097	2,978	3,124	0.9	4.9
Protein Concentrate, Human <sup>7</sup>	22,040	24,153	23,724	7.6	-1.8
Protein Concentrate, Animal <sup>7</sup>	3,503	3,207	3,366	-3.9	5.0
<b>Manufacturers' Stocks End-of-Month <sup>4</sup></b>					
	<i>1,000 Pounds</i>	<i>1,000 Pounds</i>	<i>1,000 Pounds</i>	<i>Percent</i>	<i>Percent</i>
Dry Whey Products					
Dry Whey, Human	28,924	43,951	40,254	39.2	-8.4
Dry Whey, Animal	2,709	3,398	3,265	20.5	-3.9
Reduced Lactose and Minerals					
Human and Animal <sup>5</sup>	11,405	9,991	10,037	-12.0	0.5
Lactose, Human and Animal	39,185	38,252	37,345	-4.7	-2.4
Whey Protein Concentrate, Human <sup>7</sup>	24,771	26,245	25,318	2.2	-3.5
Whey Protein Concentrate, Animal <sup>7</sup>	1,303	1,489	1,539	18.1	3.4
<b>Manufacturers' Selling Price <sup>6</sup></b>					
	<i>Cents per Pound</i>	<i>Cents per Pound</i>	<i>Cents per Pound</i>	<i>Cents Change</i>	<i>Cents Change</i>
Dry Whey, Animal	14.4	13.8	15.5	1.1	1.7

<sup>1</sup> Revised.

<sup>2</sup> Final marketable product only. Does not include quantity used or shipped to another plant for further processing into dry whey or modified whey products.

<sup>3</sup> Not shown when fewer than three plants reported or individual plant operations could be disclosed

<sup>4</sup> Stocks held by manufacturers at all points and in transit.

<sup>5</sup> Reduced lactose and minerals stocks combined to avoid disclosure of individual operations.

<sup>6</sup> Prices for bulk goods, f.o.b. plant. Average monthly prices reported by firms.

<sup>7</sup> Whey Protein Concentrate, 25.0 to 89.9 percent.

**Dairy Products: Production by Product and Month,  
United States, 2002-2003 <sup>1</sup>**

Product and Month	By Month			Cumulative		
	2002	2003	Change From 2002	2002	2003	Change From 2002
	<i>1,000 Pounds</i>	<i>1,000 Pounds</i>	<i>Percent</i>	<i>1,000 Pounds</i>	<i>1,000 Pounds</i>	<i>Percent</i>
Total Cheese <sup>3</sup>						
Jan	717,454	717,763		717,454	717,763	
Feb	667,887	653,516	-2.2	1,385,341	1,371,279	-1.0
Mar	742,764	735,370	-1.0	2,128,105	2,106,649	-1.0
Apr	719,231	721,438	0.3	2,847,336	2,828,087	-0.7
May	748,263	742,179	-0.8	3,595,599	3,570,266	-0.7
Jun	708,284	714,533	0.9	4,303,883	4,284,799	-0.4
Jul	692,195	717,211	3.6	4,996,078	5,002,010	0.1
Aug	714,314	708,415	-0.8	5,710,392	5,710,425	
Sep	683,895			6,394,287		
Oct	732,157			7,126,444		
Nov	725,444			7,851,888		
Dec	747,161			8,599,049		
American Cheese						
Jan	317,538	319,517	0.6	317,538	319,517	0.6
Feb	292,857	285,649	-2.5	610,395	605,166	-0.9
Mar	322,054	318,491	-1.1	932,449	923,657	-0.9
Apr	320,432	308,599	-3.7	1,252,881	1,232,256	-1.6
May	329,921	320,185	-3.0	1,582,802	1,552,441	-1.9
Jun	313,998	307,233	-2.2	1,896,800	1,859,674	-2.0
Jul	305,409	306,545	0.4	2,202,209	2,166,219	-1.6
Aug	309,640	302,061	-2.4	2,511,849	2,468,280	-1.7
Sep	287,537			2,799,386		
Oct	297,840			3,097,226		
Nov	294,363			3,391,589		
Dec	317,426			3,709,015		
Cheddar Cheese						
Jan	246,385	247,786	0.6	246,385	247,786	0.6
Feb	227,721	218,823	-3.9	474,106	466,609	-1.6
Mar	253,112	242,232	-4.3	727,218	708,841	-2.5
Apr	253,909	234,713	-7.6	981,127	943,554	-3.8
May	258,360	240,929	-6.7	1,239,487	1,184,483	-4.4
Jun	243,222	231,985	-4.6	1,482,709	1,416,468	-4.5
Jul	232,613	231,588	-0.4	1,715,322	1,648,056	-3.9
Aug	231,669	227,915	-1.6	1,946,991	1,875,971	-3.6
Sep	214,095			2,161,086		
Oct	219,119			2,380,205		
Nov	219,669			2,599,874		
Dec	240,203			2,840,077		

See footnote(s) at end of table.

--continued

**Dairy Products: Production by Product and Month,  
United States, 2002-2003 <sup>1</sup> (continued)**

Product and Month	By Month			Cumulative		
	2002	2003	Change From 2002	2002	2003	Change From 2002
	<i>1,000 Pounds</i>	<i>1,000 Pounds</i>	<i>Percent</i>	<i>1,000 Pounds</i>	<i>1,000 Pounds</i>	<i>Percent</i>
Italian Cheese <sup>3</sup>						
Jan	296,654	293,345	-1.1	296,654	293,345	-1.1
Feb	278,013	272,616	-1.9	574,667	565,961	-1.5
Mar	307,324	305,440	-0.6	881,991	871,401	-1.2
Apr	289,919	303,372	4.6	1,171,910	1,174,773	0.2
May	305,072	307,923	0.9	1,476,982	1,482,696	0.4
Jun	280,388	293,488	4.7	1,757,370	1,776,184	1.1
Jul	275,506	292,661	6.2	2,032,876	2,068,845	1.8
Aug	285,840	291,787	2.1	2,318,716	2,360,632	1.8
Sep	277,883			2,596,599		
Oct	300,818			2,897,417		
Nov	297,400			3,194,817		
Dec	311,661			3,506,478		
Mozzarella						
Jan	236,958	232,355	-1.9	236,958	232,355	-1.9
Feb	223,384	218,084	-2.4	460,342	450,439	-2.2
Mar	246,569	243,230	-1.4	706,911	693,669	-1.9
Apr	231,324	242,905	5.0	938,235	936,574	-0.2
May	247,659	252,404	1.9	1,185,894	1,188,978	0.3
Jun	228,778	237,956	4.0	1,414,672	1,426,934	0.9
Jul	222,293	235,700	6.0	1,636,965	1,662,634	1.6
Aug	229,911	235,537	2.4	1,866,876	1,898,171	1.7
Sep	226,158			2,093,034		
Oct	237,294			2,330,328		
Nov	234,783			2,565,111		
Dec	248,601			2,813,712		
Other Italian						
Jan	59,696	60,990	2.2	59,696	60,990	2.2
Feb	54,629	54,532	-0.2	114,325	115,522	1.0
Mar	60,755	62,210	2.4	175,080	177,732	1.5
Apr	58,595	60,467	3.2	233,675	238,199	1.9
May	57,413	55,519	-3.3	291,088	293,718	0.9
Jun	51,610	55,532	7.6	342,698	349,250	1.9
Jul	53,213	56,961	7.0	395,911	406,211	2.6
Aug	55,929	56,250	0.6	451,840	462,461	2.4
Sep	51,725			503,565		
Oct	63,524			567,089		
Nov	62,617			629,706		
Dec	63,060			692,766		

See footnote(s) at end of table.

--continued

**Dairy Products: Production by Product and Month,  
United States, 2002-2003 <sup>1</sup> (continued)**

Product and Month	By Month			Cumulative		
	2002	2003	Change From 2002	2002	2003	Change From 2002
	<i>1,000 Pounds</i>	<i>1,000 Pounds</i>	<i>Percent</i>	<i>1,000 Pounds</i>	<i>1,000 Pounds</i>	<i>Percent</i>
<b>Butter</b>						
Jan	140,069	141,440	1.0	140,069	141,440	1.0
Feb	124,231	128,362	3.3	264,300	269,802	2.1
Mar	127,695	126,338	-1.1	391,995	396,140	1.1
Apr	131,605	122,715	-6.8	523,600	518,855	-0.9
May	125,484	114,678	-8.6	649,084	633,533	-2.4
Jun	95,818	83,836	-12.5	744,902	717,369	-3.7
Jul	94,409	79,546	-15.7	839,311	796,915	-5.1
Aug	88,883	70,150	-21.1	928,194	867,065	-6.6
Sep	92,818			1,021,012		
Oct	102,613			1,123,625		
Nov	103,932			1,227,557		
Dec	127,591			1,355,148		
<b>Nonfat Dry Milk, Human</b>						
Jan	128,675	133,758	4.0	128,675	133,758	4.0
Feb	127,707	130,355	2.1	256,382	264,113	3.0
Mar	153,057	146,276	-4.4	409,439	410,389	0.2
Apr	164,159	150,404	-8.4	573,598	560,793	-2.2
May	163,379	154,168	-5.6	736,977	714,961	-3.0
Jun	152,982	130,791	-14.5	889,959	845,752	-5.0
Jul	129,071	121,976	-5.5	1,019,030	967,728	-5.0
Aug	117,870	100,257	-14.9	1,136,900	1,067,985	-6.1
Sep	97,191			1,234,091		
Oct	103,357			1,337,448		
Nov	99,049			1,436,497		
Dec	132,494			1,568,991		
<b>Total Dry Whey <sup>2</sup></b>						
Jan	90,071	97,664	8.4	90,071	97,664	8.4
Feb	84,430	88,712	5.1	174,501	186,376	6.8
Mar	96,405	101,088	4.9	270,906	287,464	6.1
Apr	93,868	95,034	1.2	364,774	382,498	4.9
May	98,417	100,893	2.5	463,191	483,391	4.4
Jun	93,720	95,163	1.5	556,911	578,554	3.9
Jul	92,358	96,848	4.9	649,269	675,402	4.0
Aug	93,820	91,316	-2.7	743,089	766,718	3.2
Sep	89,639			832,728		
Oct	93,177			925,905		
Nov	91,599			1,017,504		
Dec	98,268			1,115,772		

See footnote(s) at end of table.

--continued

**Dairy Products: Production by Product and Month,  
United States, 2002-2003 <sup>1</sup> (continued)**

Product and Month	By Month			Cumulative		
	2002	2003	Change From 2002	2002	2003	Change From 2002
	<i>1,000 Pounds</i>	<i>1,000 Pounds</i>	<i>Percent</i>	<i>1,000 Pounds</i>	<i>1,000 Pounds</i>	<i>Percent</i>
<b>Cream Cottage Cheese</b>						
Jan	30,045	31,386	4.5	30,045	31,386	4.5
Feb	29,034	29,155	0.4	59,079	60,541	2.5
Mar	31,607	31,991	1.2	90,686	92,532	2.0
Apr	31,454	33,949	7.9	122,140	126,481	3.6
May	32,966	32,767	-0.6	155,106	159,248	2.7
Jun	30,787	32,392	5.2	185,893	191,640	3.1
Jul	32,588	34,497	5.9	218,481	226,137	3.5
Aug	33,753	33,136	-1.8	252,234	259,273	2.8
Sep	31,945			284,179		
Oct	31,876			316,055		
Nov	27,764			343,819		
Dec	28,580			372,399		
<b>Lowfat Cottage Cheese</b>						
Jan	29,525	30,397	3.0	29,525	30,397	3.0
Feb	29,344	29,345		58,869	59,742	1.5
Mar	31,999	32,459	1.4	90,868	92,201	1.5
Apr	31,091	33,234	6.9	121,959	125,435	2.9
May	34,658	32,398	-6.5	156,617	157,833	0.8
Jun	29,266	31,767	8.5	185,883	189,600	2.0
Jul	34,105	33,036	-3.1	219,988	222,636	1.2
Aug	34,778	33,673	-3.2	254,766	256,309	0.6
Sep	31,505			286,271		
Oct	32,349			318,620		
Nov	27,292			345,912		
Dec	28,384			374,296		
	<i>1,000 Gallons</i>	<i>1,000 Gallons</i>	<i>Percent</i>	<i>1,000 Gallons</i>	<i>1,000 Gallons</i>	<i>Percent</i>
<b>Ice Cream, Hard</b>						
Jan	69,696	67,337	-3.4	69,696	67,337	-3.4
Feb	69,293	70,615	1.9	138,989	137,952	-0.7
Mar	75,823	73,595	-2.9	214,812	211,547	-1.5
Apr	80,364	79,402	-1.2	295,176	290,949	-1.4
May	77,609	79,138	2.0	372,785	370,087	-0.7
Jun	80,779	83,405	3.3	453,564	453,492	
Jul	82,999	82,942	-0.1	536,563	536,434	
Aug	77,896	75,593	-3.0	614,459	612,027	-0.4
Sep	69,894			684,353		
Oct	70,501			754,854		
Nov	57,374			812,228		
Dec	53,903			866,131		

See footnote(s) at end of table.

--continued



**Dairy Products: Production by Product and Month,  
United States, 2002-2003 <sup>1</sup> (continued)**

Product and Month	By Month			Cumulative		
	2002	2003	Change From 2002	2002	2003	Change From 2002
	<i>1,000 Gallons</i>	<i>1,000 Gallons</i>	<i>Percent</i>	<i>1,000 Gallons</i>	<i>1,000 Gallons</i>	<i>Percent</i>
<b>Ice Cream, Lowfat</b>						
Jan	23,520	25,274	7.5	23,520	25,274	7.5
Feb	25,096	25,853	3.0	48,616	51,127	5.2
Mar	30,861	35,416	14.8	79,477	86,543	8.9
Apr	34,564	37,557	8.7	114,041	124,100	8.8
May	37,863	40,445	6.8	151,904	164,545	8.3
Jun	37,347	42,666	14.2	189,251	207,211	9.5
Jul	36,211	42,117	16.3	225,462	249,328	10.6
Aug	34,033	38,520	13.2	259,495	287,848	10.9
Sep	28,540			288,035		
Oct	27,696			315,731		
Nov	22,428			338,159		
Dec	23,428			361,587		
<b>Ice Cream, NF, Hard</b>						
Jan	1,665	1,584	-4.9	1,665	1,584	-4.9
Feb	1,350	1,689	25.1	3,015	3,273	8.6
Mar	1,858	1,580	-15.0	4,873	4,853	-0.4
Apr	1,693	1,908	12.7	6,566	6,761	3.0
May	1,566	1,875	19.7	8,132	8,636	6.2
Jun	1,483	1,935	30.5	9,615	10,571	9.9
Jul	1,546	1,935	25.2	11,161	12,506	12.1
Aug	1,534	1,534		12,695	14,040	10.6
Sep	1,423			14,118		
Oct	1,572			15,690		
Nov	1,451			17,141		
Dec	1,250			18,391		
<b>Sherbet, Hard</b>						
Jan	3,731	4,056	8.7	3,731	4,056	8.7
Feb	3,904	4,406	12.9	7,635	8,462	10.8
Mar	4,775	5,011	4.9	12,410	13,473	8.6
Apr	5,047	5,438	7.7	17,457	18,911	8.3
May	5,250	5,319	1.3	22,707	24,230	6.7
Jun	5,225	5,835	11.7	27,932	30,065	7.6
Jul	5,478	5,345	-2.4	33,410	35,410	6.0
Aug	4,629	4,701	1.6	38,039	40,111	5.4
Sep	4,124			42,163		
Oct	4,058			46,221		
Nov	2,934			49,155		
Dec	3,189			52,344		

See footnote(s) at end of table.

--continued

**Dairy Products: Production by Product and Month,  
United States, 2002-2003 <sup>1</sup> (continued)**

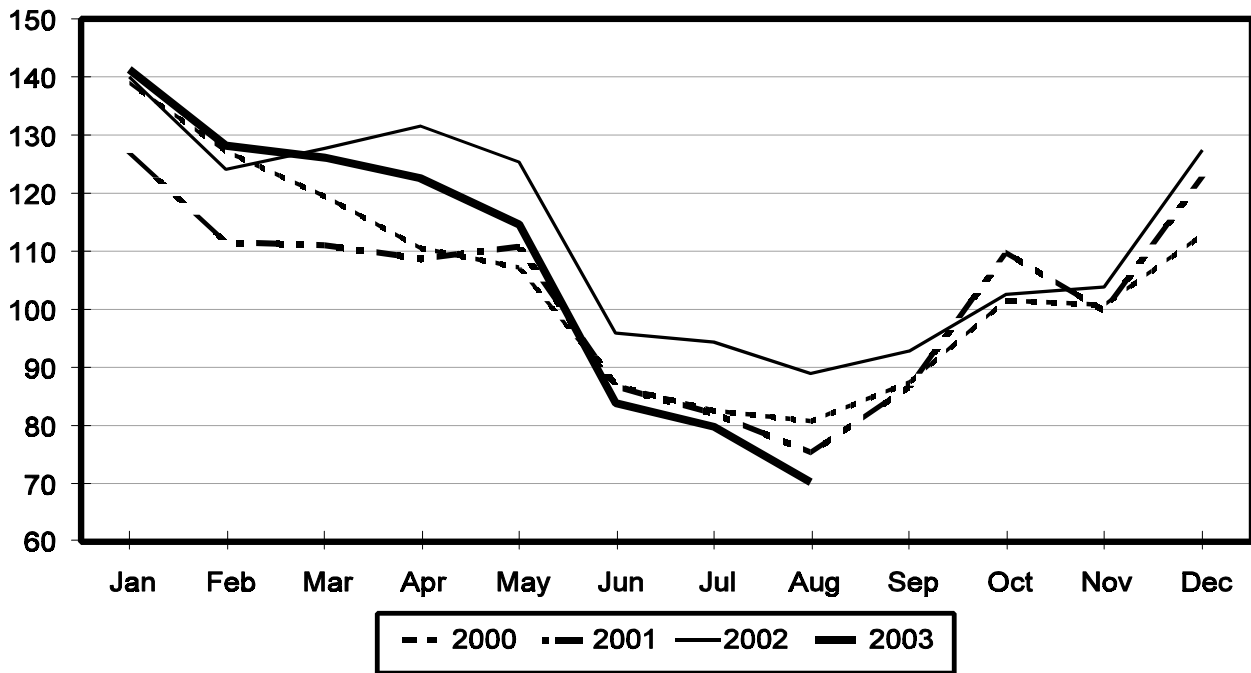
Product and Month	By Month			Cumulative		
	2002	2003	Change From 2002	2002	2003	Change From 2002
	<i>1,000 Gallons</i>	<i>1,000 Gallons</i>	<i>Percent</i>	<i>1,000 Gallons</i>	<i>1,000 Gallons</i>	<i>Percent</i>
Frozen Yogurt						
Jan	5,715	5,719	0.1	5,715	5,719	0.1
Feb	6,012	5,505	-8.4	11,727	11,224	-4.3
Mar	6,696	5,794	-13.5	18,423	17,018	-7.6
Apr	7,156	6,370	-11.0	25,579	23,388	-8.6
May	6,932	6,482	-6.5	32,511	29,870	-8.1
Jun	6,498	5,906	-9.1	39,009	35,776	-8.3
Jul	6,722	5,853	-12.9	45,731	41,629	-9.0
Aug	6,619	5,637	-14.8	52,350	47,266	-9.7
Sep	6,046			58,396		
Oct	5,842			64,238		
Nov	4,937			69,175		
Dec	4,231			73,406		

<sup>1</sup> July 2003 data revised.

<sup>2</sup> Excludes all modified dry whey products.

## Total Butter Production United States

Million Pounds



**Total Cheese, Excluding Cottage Cheese: Production by  
State and United States, August 2002-2003**

State	Aug 2002	Jul <sup>1</sup> 2003	Aug 2003	Change From	
				Aug 2002	Jul 2003
	<i>1,000 Pounds</i>	<i>1,000 Pounds</i>	<i>1,000 Pounds</i>	<i>Percent</i>	<i>Percent</i>
CA	146,757	156,200	157,256	7.2	0.7
ID	58,523	54,412	54,870	-6.2	0.8
IL	7,500	7,913	7,206	-3.9	-8.9
IA	21,919	18,430	19,508	-11.0	5.8
MA	61	64	57	-6.6	-10.9
MN	45,518	50,760	48,877	7.4	-3.7
MO	8,579	8,476	8,169	-4.8	-3.6
NY	57,320	55,056	57,139	-0.3	3.8
OH	12,075	14,306	13,050	8.1	-8.8
PA	28,489	31,408	27,257	-4.3	-13.2
SD	13,784	13,081	11,593	-15.9	-11.4
UT	6,271	6,408	6,276	0.1	-2.1
WA	12,595				
WI	188,910	187,843	185,283	-1.9	-1.4
Oth Sts <sup>2</sup>	106,013	112,854	111,874	5.5	-0.9
US	714,314	717,211	708,415	-0.8	-1.2
N Atlantic	105,234	103,369	100,568	-4.4	-2.7
S Atlantic	3,046	3,410	3,061	0.5	-10.2
E N Central	220,393	223,485	217,133	-1.5	-2.8
W N Central	96,683	92,037	89,981	-6.9	-2.2
S Central	6,271	5,825	6,613	5.5	13.5
West	282,687	289,085	291,059	3.0	0.7

<sup>1</sup> Revised.

<sup>2</sup> States not shown when fewer than 3 plants reported or individual plant operations could be disclosed. Percent change shown only when comparable States are included in the calculation.

**American Cheese: Production by State and United States, August 2002-2003**

State	Aug 2002	Jul <sup>1</sup> 2003	Aug 2003	Change From	
				Aug 2002	Jul 2003
	<i>1,000 Pounds</i>	<i>1,000 Pounds</i>	<i>1,000 Pounds</i>	<i>Percent</i>	<i>Percent</i>
CA	68,266	68,469	68,487	0.3	
ID	45,517	39,854	41,099	-9.7	3.1
IA	11,107	10,074	9,858	-11.2	-2.1
MN	43,846	49,221	47,179	7.6	-4.1
NY	7,013	7,425	5,741	-18.1	-22.7
OH	2,288	3,113	2,782	21.6	-10.6
OR	8,192	8,477	9,186	12.1	8.4
SD	6,665	7,251	6,132	-8.0	-15.4
WA	12,573				
WI	71,686	66,920	65,040	-9.3	-2.8
Oth Sts <sup>2</sup>	32,487	45,741	46,557	43.3	1.8
US	309,640	306,545	302,061	-2.4	-1.5
Atlantic	11,828	13,460	11,904	0.6	-11.6
E N Central	75,358	71,263	68,976	-8.5	-3.2
W N Central	62,596	66,892	63,554	1.5	-5.0
S Central	3,676	3,670	3,865	5.1	5.3
West	156,182	151,260	153,762	-1.5	1.7

<sup>1</sup> Revised.

<sup>2</sup> States not shown when fewer than 3 plants reported or individual plant operations could be disclosed. Percent change shown only when comparable States are included in the calculation.

**Cheddar Cheese: Production by State and United States, August 2002-2003**

State	Aug 2002	Jul <sup>1</sup> 2003	Aug 2003	Change From	
				Aug 2002	Jul 2003
	<i>1,000 Pounds</i>	<i>1,000 Pounds</i>	<i>1,000 Pounds</i>	<i>Percent</i>	<i>Percent</i>
CA	48,948	45,005	47,553	-2.8	5.7
ID	18,508	19,265	20,157	8.9	4.6
MN	40,709	44,894	42,466	4.3	-5.4
NY	6,953	7,300	5,634	-19.0	-22.8
SD	4,253	5,397	4,332	1.9	-19.7
WA	10,204				
WI	57,493	53,220	50,240	-12.6	-5.6
Oth Sts <sup>2</sup>	44,601	56,507	57,533	29.0	1.8
US	231,669	231,588	227,915	-1.6	-1.6
Atlantic	11,616	12,856	11,314	-2.6	-12.0
E N Cen	59,379	55,458	52,407	-11.7	-5.5
W N Cen	51,251	56,687	53,918	5.2	-4.9
S Cen	3,676	3,670	3,865	5.1	5.3
West	105,747	102,917	106,411	0.6	3.4

<sup>1</sup> Revised.

<sup>2</sup> States not shown when fewer than 3 plants reported or individual plant operations could be disclosed. Percent change shown only when comparable States are included in the calculation.

**Mozzarella Cheese: Production by State and United States, August 2002-2003**

State	Aug 2002	Jul <sup>1</sup> 2003	Aug 2003	Change From	
				Aug 2002	Jul 2003
	<i>1,000 Pounds</i>	<i>1,000 Pounds</i>	<i>1,000 Pounds</i>	<i>Percent</i>	<i>Percent</i>
CA	61,286	67,940	71,753	17.1	5.6
NY	16,890	17,139	16,917	0.2	-1.3
PA	13,767	15,569	13,760	-0.1	-11.6
WI	62,228	65,450	65,250	4.9	-0.3
Oth Sts <sup>2</sup>	75,740	69,602	67,857	-10.4	-2.5
US	229,911	235,700	235,537	2.4	-0.1
Atlantic <sup>3</sup>	42,981	41,440	38,739	-9.9	-6.5
E N Central	72,702	77,640	75,701	4.1	-2.5
West	99,263	107,261	111,094	11.9	3.6

<sup>1</sup> Revised.

<sup>2</sup> States not shown when fewer than 3 plants reported or individual plant operations could be disclosed. Percent change shown only when comparable States are included in the calculation.

<sup>3</sup> Region totals may not add to U.S. when compiled regions could not be disclosed.

**Butter: Production by State and United States, August 2002-2003**

State	Aug 2002	Jul <sup>1</sup> 2003	Aug 2003	Change From	
				Aug 2002	Jul 2003
	<i>1,000 Pounds</i>	<i>1,000 Pounds</i>	<i>1,000 Pounds</i>	<i>Percent</i>	<i>Percent</i>
CA	30,046	22,696	22,842	-24.0	0.6
NY	1,711	1,912	1,690	-1.2	-11.6
PA	4,260	3,540	3,602	-15.4	1.8
WA	8,890				
WI	21,341	17,950	17,360	-18.7	-3.3
Oth Sts <sup>2</sup>	22,635	33,448	24,656	8.9	-26.3
US	88,883	79,546	70,150	-21.1	-11.8
N Atlantic <sup>3</sup>	7,863	7,820	6,962	-11.5	-11.0
E N Central	23,972	19,872	18,320	-23.6	-7.8
W N Central	6,665	6,612	5,301	-20.5	-19.8
West	44,354	36,084	35,170	-20.7	-2.5

<sup>1</sup> Revised.

<sup>2</sup> States not shown when fewer than 3 plants reported or individual plant operations could be disclosed. Percent change shown only when comparable States are included in the calculation.

<sup>3</sup> Region totals may not add to U.S. when compiled regions could not be disclosed.

**Nonfat Dry Milk, Human: Production by State  
and United States, August 2002-2003**

State	Aug 2002	Jul <sup>1</sup> 2003	Aug 2003	Change From	
				Aug 2002	Jul 2003
	<i>1,000 Pounds</i>	<i>1,000 Pounds</i>	<i>1,000 Pounds</i>	<i>Percent</i>	<i>Percent</i>
CA	60,705	57,015	58,459	-3.7	2.5
ID	8,681	6,078	5,293	-39.0	-12.9
WA	16,643				
Oth Sts <sup>2</sup>	31,841	58,883	36,505	14.6	-38.0
US	117,870	121,976	100,257	-14.9	-17.8
Atlantic	7,244	12,980	6,424	-11.3	-50.5
E N Central	3,379	3,501	2,758	-18.4	-21.2
W N Central	5,501	5,403	2,390	-56.6	-55.8
S Central	2,918	6,045	2,721	-6.8	-55.0
West	98,828	94,047	85,964	-13.0	-8.6

<sup>1</sup> Revised.

<sup>2</sup> States not shown when fewer than 3 plants reported or individual plant operations could be disclosed. Percent change shown only when comparable States are included in the calculation.

**Dry Whey, Human: Production by State  
and United States, August 2002-2003**

State	Aug 2002	Jul <sup>1</sup> 2003	Aug 2003	Change From	
				Aug 2002	Jul 2003
	<i>1,000 Pounds</i>	<i>1,000 Pounds</i>	<i>1,000 Pounds</i>	<i>Percent</i>	<i>Percent</i>
CA	12,467	9,595	8,291	-33.5	-13.6
MN	6,730	8,833	9,035	34.2	2.3
NY	10,184	11,322	10,467	2.8	-7.6
PA	8,842	7,082	6,343	-28.3	-10.4
WA	8,854				
WI	25,633	27,000	25,100	-2.1	-7.0
Oth Sts <sup>2</sup>	15,288	25,205	24,152	58.0	-4.2
US	87,998	89,037	83,388	-5.2	-6.3
Atlantic	19,026	18,404	16,810	-11.6	-8.7
Central	43,222	47,171	45,045	4.2	-4.5
West	25,750	23,462	21,533	-16.4	-8.2

<sup>1</sup> Revised.

<sup>2</sup> States not shown when fewer than 3 plants reported or individual plant operations could be disclosed. Percent change shown only when comparable States are included in the calculation.

**Ice Cream, Hard: Production by State and United States, August 2002-2003**

State	Aug 2002	Jul <sup>1</sup> 2003	Aug 2003	Change From	
				Aug 2002	Jul 2003
	<i>1,000 Gallons</i>	<i>1,000 Gallons</i>	<i>1,000 Gallons</i>	<i>Percent</i>	<i>Percent</i>
CA	11,643	11,491	11,212	-3.7	-2.4
FL	1,667	2,200	2,380	42.8	8.2
IL	2,614	3,028	3,126	19.6	3.2
IN	6,483	6,944	5,939	-8.4	-14.5
MD	2,020	1,854	1,784	-11.7	-3.8
MA	6,405	7,001	5,823	-9.1	-16.8
MI	1,934	1,640	1,575	-18.6	-4.0
MN	3,912	3,539	3,200	-18.2	-9.6
MO	1,353	1,506	1,527	12.9	1.4
NY	2,595	3,300	2,900	11.8	-12.1
NC	1,596	1,731	1,530	-4.1	-11.6
OH	2,868	2,921	2,658	-7.3	-9.0
OR	1,202	1,376	1,230	2.3	-10.6
PA	4,590	4,905	3,982	-13.2	-18.8
SD	3	4	2	-33.3	-50.0
TN	1,096	1,745	1,780	62.4	2.0
TX	4,218	4,531	3,987	-5.5	-12.0
UT	1,116	1,402	1,542	38.2	10.0
WA	1,409	1,262	860	-39.0	-31.9
Oth Sts <sup>2</sup>	19,172	20,562	18,556	-3.2	-9.8
US	77,896	82,942	75,593	-3.0	-8.9
N Atlantic	16,352	18,110	15,081	-7.8	-16.7
S Atlantic	7,048	7,035	6,989	-0.8	-0.7
E N Central	14,962	15,537	14,153	-5.4	-8.9
W N Central	11,705	12,037	11,778	0.6	-2.2
S Central	9,257	10,561	9,901	7.0	-6.2
West	18,572	19,662	17,691	-4.7	-10.0

<sup>1</sup> Revised.

<sup>2</sup> States not shown when fewer than 3 plants reported or individual plant operations could be disclosed. Percent change shown only when comparable States are included in the calculation.

**Canned Milk and Dry Milk Products: Manufacturers' Shipments,  
Stocks, and Selling Prices, August, 2002-2003**

Product	Aug 2002	Jul 2003 <sup>1</sup>	Aug 2003	Change From	
				Aug 2002	Jul 2003
Nonfat Dry Milk, Human <sup>3</sup>	Manufacturers' Shipments <sup>2</sup>				
	<i>1,000 Pounds</i>	<i>1,000 Pounds</i>	<i>1,000 Pounds</i>	<i>Percent</i>	<i>Percent</i>
	148,557	145,280	125,913	-15.2	-13.3
Canned Evaporated and Condensed Whole Milk Nonfat Dry Milk, Human Dry Buttermilk, Total <sup>5</sup>	Manufacturers' Stocks End-of-Month <sup>4</sup>				
	<i>1,000 Pounds</i>	<i>1,000 Pounds</i>	<i>1,000 Pounds</i>	<i>Percent</i>	<i>Percent</i>
	89,882	86,492	73,771	-17.9	-14.7
	94,471	89,508	75,877	-19.7	-15.2
	8,332	2,521	2,412	-71.1	-4.3

<sup>1</sup> Revised.

<sup>2</sup> For dry products, shipments of bulk goods only.

<sup>3</sup> Preliminary revisions for Manufacturer's Shipments and Stocks End-of-Month for Nonfat Dry Milk, Human, for 2002 and 2003 can be found in the table below.

<sup>4</sup> Stocks held by manufacturers at all points and in transit.

<sup>5</sup> Preliminary revisions for Stocks End-of-Month for Dry Buttermilk, Total, for 2002 and 2003 can be found in the table below.

**Preliminary Revisions: Nonfat Dry Milk, Human  
2002-2003**

Month	Manufacturer's Shipments		Stocks	
	2002	2003	2002	2003
	<i>1,000 Pounds</i>	<i>1,000 Pounds</i>	<i>1,000 Pounds</i>	<i>1,000 Pounds</i>
Jan	133,335	119,849	101,116	99,593
Feb	112,323	107,906	126,759	104,460
Mar	129,756	126,071	139,682	122,376
Apr	154,477	141,728	140,830	128,840
May	162,830	142,414	142,938	128,322
Jun	149,937	133,564	147,811	123,163
Jul	146,262	145,280	126,070	89,508
Aug	148,557	125,913	94,471	75,877
Sep	117,283		71,655	
Oct	100,684		69,340	
Nov	87,522		73,912	
Dec	104,962		90,501	

**Preliminary Revisions: Dry Buttermilk, Total  
2002-2003**

Month	Stocks	
	2002	2003
	<i>1,000 Pounds</i>	<i>1,000 Pounds</i>
Jan	7,835	9,226
Feb	8,035	9,027
Mar	8,506	10,015
Apr	11,135	9,842
May	12,020	9,469
Jun	11,726	7,043
Jul	10,926	2,521
Aug	8,332	2,412
Sep	6,916	
Oct	4,648	
Nov	5,766	
Dec	7,451	



**Procedures and Reliability:** Estimates included in this report are based on data provided each month by manufacturers of these products. In 32 States, the State Departments of Agriculture assist in collection of data, which eliminates duplicate reporting and reduces respondent burden. Data are collected by mail, personal and telephone interviews following the close of each month. There were 1,153 manufacturers that made one or more products in 2002. Each month, reports are generally received from all dairy plants in States with small numbers of plants. In States with large numbers of plants, survey procedures are designed to obtain monthly reports from all large plants and from a sample of small plants. Monthly estimates are based upon returns from about 70 percent of the plants which account for 70 to 90 percent of the total production of major dairy products.

**Revision Policy:** Monthly estimates are subject to revision the month following the preliminary estimates. Annual estimates are published in the "**Dairy Products**" report published each April which includes any revisions made to current and previous year. An attempt is made to get information from all plants for preparing these estimates.

The next "*Dairy Products*" report will be released at 3 p.m. ET on November 4, 2003.

The United States Department of Agriculture (USDA) prohibits discrimination in all its programs on the basis of race, color, national origin, gender, religion, age, disability, political beliefs, sexual orientation, and marital or family status. (Not all prohibited bases apply to all programs.) Persons with disabilities who require alternative means for communication of program information (braille, large print, audiotape, etc.) should contact the USDA's TARGET Center at 202-720-2600 (voice and TDD).

To file a complaint of discrimination, write USDA, Director, Office of Civil Rights, Room 326-W, Whitten Building, 1400 Independence Avenue, SW, Washington, D.C., 20250-9410, or call 202-720-5964 (voice or TDD). USDA is an equal opportunity provider and employer.

## ACCESS TO REPORTS!!

---

For your convenience, there are several ways to obtain NASS reports, data products, and services:

### INTERNET ACCESS

All NASS reports are available free of charge on the worldwide Internet. For access, connect to the Internet and go to the NASS Home Page at: <http://www.usda.gov/nass/>. Select "Today's Reports" or Publications and then Reports Calendar or Publications and then Search, by Title or Subject.

### E-MAIL SUBSCRIPTION

All NASS reports are available by subscription free of charge direct to your e-mail address. Starting with the NASS Home Page at <http://www.usda.gov/nass/>, click on **Publications**, then click on the **Subscribe by E-mail** button which takes you to the page describing e-mail delivery of reports. Finally, click on **Go to the Subscription Page** and follow the instructions.

-----

### PRINTED REPORTS OR DATA PRODUCTS

**CALL OUR TOLL-FREE ORDER DESK: 800-999-6779 (U.S. and Canada)**  
**Other areas, please call 703-605-6220      FAX: 703-605-6900**  
**(Visa, MasterCard, check, or money order acceptable for payment.)**

-----

### ASSISTANCE

For **assistance** with general agricultural statistics or further information about NASS or its products or services, contact the **Agricultural Statistics Hotline** at **800-727-9540**, 7:30 a.m. to 4:00 p.m. ET, or e-mail: [nass@nass.usda.gov](mailto:nass@nass.usda.gov).

---