

Released December 4, 2003, by the National Agricultural Statistics Service (NASS), Agricultural Statistics Board, U.S. Department of Agriculture. For information on "Dairy Products" call Kevin Pautler at (202) 720-9168, office hours 7:30 a.m. to 4:00 p.m. ET.

October 2003 Highlights

Total cheese output (excluding cottage cheese) was 739 million pounds, 1.0 percent above October 2002 and 3.8 percent above September 2003.

American type cheese production totaled 303 million pounds, 1.6 percent above October 2002 and 4.3 percent above September 2003.

Butter production was 97.0 million pounds in October, 5.5 percent below October 2002 but 32.7 percent above September 2003.

Frozen dessert: (comparisons with October 2002)

Ice cream, Regular (hard) --- 68.7 million gallons, down 2.6 percent.

Ice cream, Lowfat (total) --- 30.7 million gallons, up 10.7 percent.

Ice cream, Nonfat (hard) --- 1.69 million gallons, up 7.7 percent.

Sherbet (hard) --- 3.97 million gallons, down 2.1 percent.

Frozen Yogurt (total) --- 4.84 million gallons, down 17.2 percent.

Nonfat dry milk for human food: (compared with October 2002) --- 99.1 million pounds, down 4.1 percent.

Dry whey products: (comparisons with October 2002)

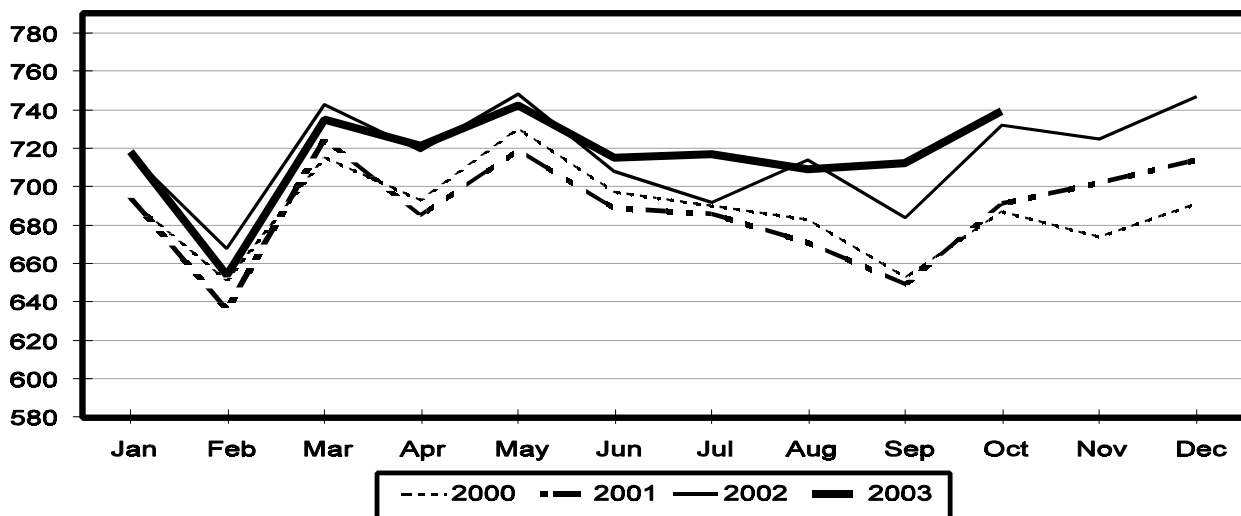
Dry whey, human --- 82.2 million pounds, down 7.2 percent.

Dry whey, animal --- 5.86 million pounds, up 29.4 percent.

Dry whey, total --- 88.1 million pounds, down 5.5 percent.

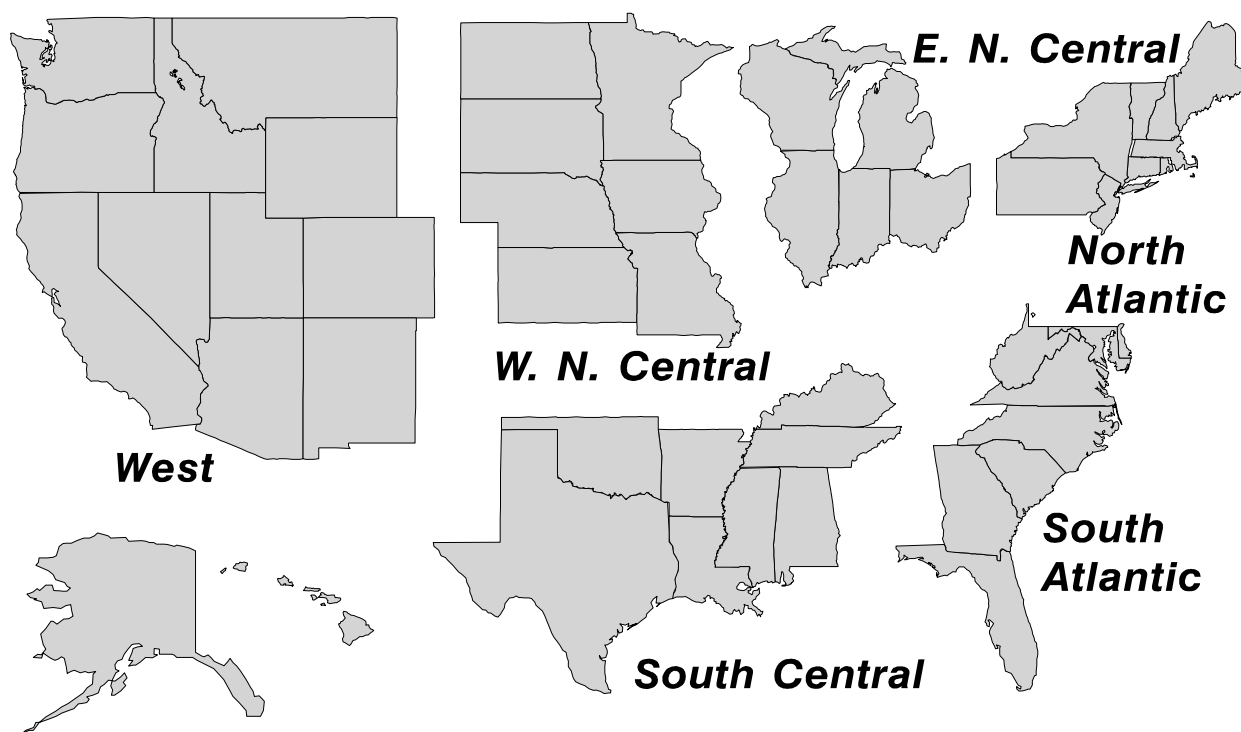
Total Cheese Production United States

Million Pounds



U. S. Geographic Regions Dairy Products

State totals are not published when fewer than 3 firms have reported or one firm comprises more than 60 percent of the State total. If we are not able to publish a region for confidentiality reasons, it will be combined with other regions when possible. For example, if North Atlantic can not be published, then it will be combined with South Atlantic to publish Atlantic. The West North Central and East North Central will be combined, if necessary, to form North Central. In the event that neither could be published, they may be combined with South Central to publish Central. Some tables will have only limited regions shown, therefore the regions may not add to the United States total.



**Dairy Products: Production by Product,
United States, October, 2002-2003**

Product	Oct 2002	Sep 2003 ¹	Oct 2003	Change From	
				Oct 2002	Sep 2003
	<i>1,000 Pounds</i>	<i>1,000 Pounds</i>	<i>1,000 Pounds</i>	<i>Percent</i>	<i>Percent</i>
Butter	102,613	73,091	96,990	-5.5	32.7
Cheese					
American Types ²	297,840	290,065	302,593	1.6	4.3
Cheddar	219,119	214,132	220,422	0.6	2.9
Swiss	22,418	21,379	23,597	5.3	10.4
Brick and Muenster	8,774	7,224	8,207	-6.5	13.6
Cream and Neufchatel	71,570	70,276	75,179	5.0	7.0
Hispanic	11,206	10,911	10,669	-4.8	-2.2
Mozzarella	237,294	229,124	233,756	-1.5	2.0
Other Italian Types	63,524	61,871	65,141	2.5	5.3
Total Italian Types	300,818	290,995	298,897	-0.6	2.7
All Other Types	19,531	21,258	20,076	2.8	-5.6
Total	732,157	712,108	739,218	1.0	3.8
Cottage Cheese, Curd ³	37,853	37,207	34,614	-8.6	-7.0
Cottage Cheese, Cream ⁴	31,876	32,462	30,090	-5.6	-7.3
Cottage Cheese, Lowfat ⁵	32,349	31,629	30,370	-6.1	-4.0
Canned Evaporated and Condensed Whole Milk	49,461	40,099	47,256	-4.5	17.8
Dry Whole Milk	5,517	5,204	2,864	-48.1	-45.0
Nonfat Dry Milk, Human	103,357	88,498	99,090	-4.1	12.0
Dry Skim Milk, Animal	468	460	475	1.5	3.3
Dry Buttermilk	3,668	2,426	3,592	-2.1	48.1
Sour Cream ⁶		75,278	74,338		-1.2
Yogurt, Plain & Flavored	177,908	189,064	183,285	3.0	-3.1
	<i>1,000 Gallons</i>	<i>1,000 Gallons</i>	<i>1,000 Gallons</i>	<i>Percent</i>	<i>Percent</i>
Frozen Products					
Ice Cream, Hard	70,501	71,799	68,666	-2.6	-4.4
Ice Cream, Lowfat, Hard	7,866	7,756	7,809	-0.7	0.7
Ice Cream, Lowfat, Soft	19,830	24,621	22,860	15.3	-7.2
Ice Cream, Lowfat, Total	27,696	32,377	30,669	10.7	-5.3
Ice Cream, Nonfat, Hard	1,572	1,553	1,693	7.7	9.0
Sherbet, Hard	4,058	4,433	3,972	-2.1	-10.4
Water and Juice Ices	4,670	4,466	4,102	-12.2	-8.2
Frozen Yogurt, Total	5,842	5,360	4,840	-17.2	-9.7
Regular & Lowfat, Hard	2,061	1,859	1,864	-9.6	0.3
Nonfat, Hard	1,023	1,139	906	-11.4	-20.5
Other Frozen Dairy Products	713	635	675	-5.3	6.3
Mix for Frozen Products					
Ice Cream Mix	41,751	42,328	40,321	-3.4	-4.7
Ice Cream, Lowfat, Mix	16,367	17,992	17,025	4.0	-5.4
Ice Cream, Nonfat, Mix	972	1,004	1,197	23.1	19.2
Sherbet Mix	2,936	2,988	2,697	-8.1	-9.7
Yogurt Mix	3,345	3,153	2,847	-14.9	-9.7

¹ Revised.

² Includes Cheddar, Colby, Monterey, and Jack.

³ Mostly used for processing into cream or lowfat cottage cheese.

⁴ Fat content 4 percent or more.

⁵ Fat content less than 4 percent.

⁶ Corrected totals due to errors in reporting unit: January 76,716; February 64,282; and March 75,689 million pounds.

**Whey and Modified Whey Products: Production, Stocks,
and Prices, United States, October, 2002-2003**

Product	Oct 2002	Sep 2003 ¹	Oct 2003	Change From	
				Oct 2002	Sep 2003
Production					
	<i>1,000 Pounds</i>	<i>1,000 Pounds</i>	<i>1,000 Pounds</i>	<i>Percent</i>	<i>Percent</i>
Condensed Whey, Solids Content ²					
Sweet-Type, Human	8,671	8,551	10,905	25.8	27.5
Sweet-Type, Animal ³					
Dry Whey Products					
Dry Whey, Human	88,649	78,790	82,238	-7.2	4.4
Dry Whey, Animal	4,528	8,660	5,857	29.4	-32.4
Dry Whey, Total	93,177	87,450	88,095	-5.5	0.7
Reduced Lactose and Minerals					
Human Food	4,384	3,823	3,684	-16.0	-3.6
Animal Feed	3,543	3,059	3,447	-2.7	12.7
Lactose, Human and Animal	46,992	50,658	52,747	12.2	4.1
Whey					
Solids in Wet Blends, Animal ³	4,009	4,413	3,528	-12.0	-20.1
Protein Concentrate, Human ⁷	22,971	23,268	23,068	0.4	-0.9
Protein Concentrate, Animal ⁷	3,443	3,296	3,593	4.4	9.0
Manufacturers' Stocks End-of-Month ⁴					
	<i>1,000 Pounds</i>	<i>1,000 Pounds</i>	<i>1,000 Pounds</i>	<i>Percent</i>	<i>Percent</i>
Dry Whey Products					
Dry Whey, Human	31,939	37,876	36,105	13.0	-4.7
Dry Whey, Animal	2,185	3,391	3,047	39.5	-10.1
Reduced Lactose and Minerals					
Human and Animal ⁵	8,825	9,518	7,379	-16.4	-22.5
Lactose, Human and Animal	41,930	40,241	42,682	1.8	6.1
Whey Protein Concentrate, Human ⁷	22,505	23,391	23,626	5.0	1.0
Whey Protein Concentrate, Animal ⁷	1,127	1,657	2,248	99.5	35.7
Manufacturers' Selling Price ⁶					
	<i>Cents per Pound</i>	<i>Cents per Pound</i>	<i>Cents per Pound</i>	<i>Cents Change</i>	<i>Cents Change</i>
Dry Whey, Animal	20.8	16.5	17.9	-2.9	1.4

¹ Revised.

² Final marketable product only. Does not include quantity used or shipped to another plant for further processing into dry whey or modified whey products.

³ Not shown when fewer than three plants reported or individual plant operations could be disclosed

⁴ Stocks held by manufacturers at all points and in transit.

⁵ Reduced lactose and minerals stocks combined to avoid disclosure of individual operations.

⁶ Prices for bulk goods, f.o.b. plant. Average monthly prices reported by firms.

⁷ Whey Protein Concentrate, 25.0 to 89.9 percent.

**Dairy Products: Production by Product and Month,
United States, 2002-2003 ¹**

Product and Month	By Month			Cumulative		
	2002	2003	Change From 2002	2002	2003	Change From 2002
	<i>1,000 Pounds</i>	<i>1,000 Pounds</i>	<i>Percent</i>	<i>1,000 Pounds</i>	<i>1,000 Pounds</i>	<i>Percent</i>
Total Cheese ³						
Jan	717,454	717,763		717,454	717,763	
Feb	667,887	653,516	-2.2	1,385,341	1,371,279	-1.0
Mar	742,764	735,370	-1.0	2,128,105	2,106,649	-1.0
Apr	719,231	721,438	0.3	2,847,336	2,828,087	-0.7
May	748,263	742,179	-0.8	3,595,599	3,570,266	-0.7
Jun	708,284	714,533	0.9	4,303,883	4,284,799	-0.4
Jul	692,195	717,211	3.6	4,996,078	5,002,010	0.1
Aug	714,314	709,043	-0.7	5,710,392	5,711,053	
Sep	683,895	712,108	4.1	6,394,287	6,423,161	0.5
Oct	732,157	739,218	1.0	7,126,444	7,162,379	0.5
Nov	725,444			7,851,888		
Dec	747,161			8,599,049		
American Cheese						
Jan	317,538	319,517	0.6	317,538	319,517	0.6
Feb	292,857	285,649	-2.5	610,395	605,166	-0.9
Mar	322,054	318,491	-1.1	932,449	923,657	-0.9
Apr	320,432	308,599	-3.7	1,252,881	1,232,256	-1.6
May	329,921	320,185	-3.0	1,582,802	1,552,441	-1.9
Jun	313,998	307,233	-2.2	1,896,800	1,859,674	-2.0
Jul	305,409	306,545	0.4	2,202,209	2,166,219	-1.6
Aug	309,640	302,139	-2.4	2,511,849	2,468,358	-1.7
Sep	287,537	290,065	0.9	2,799,386	2,758,423	-1.5
Oct	297,840	302,593	1.6	3,097,226	3,061,016	-1.2
Nov	294,363			3,391,589		
Dec	317,426			3,709,015		
Cheddar Cheese						
Jan	246,385	247,786	0.6	246,385	247,786	0.6
Feb	227,721	218,823	-3.9	474,106	466,609	-1.6
Mar	253,112	242,232	-4.3	727,218	708,841	-2.5
Apr	253,909	234,713	-7.6	981,127	943,554	-3.8
May	258,360	240,929	-6.7	1,239,487	1,184,483	-4.4
Jun	243,222	231,985	-4.6	1,482,709	1,416,468	-4.5
Jul	232,613	231,588	-0.4	1,715,322	1,648,056	-3.9
Aug	231,669	227,936	-1.6	1,946,991	1,875,992	-3.6
Sep	214,095	214,132		2,161,086	2,090,124	-3.3
Oct	219,119	220,422	0.6	2,380,205	2,310,546	-2.9
Nov	219,669			2,599,874		
Dec	240,203			2,840,077		

See footnote(s) at end of table.

--continued

**Dairy Products: Production by Product and Month,
United States, 2002-2003 ¹ (continued)**

Product and Month	By Month			Cumulative		
	2002	2003	Change From 2002	2002	2003	Change From 2002
	<i>1,000 Pounds</i>	<i>1,000 Pounds</i>	<i>Percent</i>	<i>1,000 Pounds</i>	<i>1,000 Pounds</i>	<i>Percent</i>
Italian Cheese ³						
Jan	296,654	293,345	-1.1	296,654	293,345	-1.1
Feb	278,013	272,616	-1.9	574,667	565,961	-1.5
Mar	307,324	305,440	-0.6	881,991	871,401	-1.2
Apr	289,919	303,372	4.6	1,171,910	1,174,773	0.2
May	305,072	307,923	0.9	1,476,982	1,482,696	0.4
Jun	280,388	293,488	4.7	1,757,370	1,776,184	1.1
Jul	275,506	292,661	6.2	2,032,876	2,068,845	1.8
Aug	285,840	291,828	2.1	2,318,716	2,360,673	1.8
Sep	277,883	290,995	4.7	2,596,599	2,651,668	2.1
Oct	300,818	298,897	-0.6	2,897,417	2,950,565	1.8
Nov	297,400			3,194,817		
Dec	311,661			3,506,478		
Mozzarella						
Jan	236,958	232,355	-1.9	236,958	232,355	-1.9
Feb	223,384	218,084	-2.4	460,342	450,439	-2.2
Mar	246,569	243,230	-1.4	706,911	693,669	-1.9
Apr	231,324	242,905	5.0	938,235	936,574	-0.2
May	247,659	252,404	1.9	1,185,894	1,188,978	0.3
Jun	228,778	237,956	4.0	1,414,672	1,426,934	0.9
Jul	222,293	235,700	6.0	1,636,965	1,662,634	1.6
Aug	229,911	235,603	2.5	1,866,876	1,898,237	1.7
Sep	226,158	229,124	1.3	2,093,034	2,127,361	1.6
Oct	237,294	233,756	-1.5	2,330,328	2,361,117	1.3
Nov	234,783			2,565,111		
Dec	248,601			2,813,712		
Other Italian						
Jan	59,696	60,990	2.2	59,696	60,990	2.2
Feb	54,629	54,532	-0.2	114,325	115,522	1.0
Mar	60,755	62,210	2.4	175,080	177,732	1.5
Apr	58,595	60,467	3.2	233,675	238,199	1.9
May	57,413	55,519	-3.3	291,088	293,718	0.9
Jun	51,610	55,532	7.6	342,698	349,250	1.9
Jul	53,213	56,961	7.0	395,911	406,211	2.6
Aug	55,929	56,225	0.5	451,840	462,436	2.3
Sep	51,725	61,871	19.6	503,565	524,307	4.1
Oct	63,524	65,141	2.5	567,089	589,448	3.9
Nov	62,617			629,706		
Dec	63,060			692,766		

See footnote(s) at end of table.

--continued

**Dairy Products: Production by Product and Month,
United States, 2002-2003 ¹ (continued)**

Product and Month	By Month			Cumulative		
	2002	2003	Change From 2002	2002	2003	Change From 2002
	<i>1,000 Pounds</i>	<i>1,000 Pounds</i>	<i>Percent</i>	<i>1,000 Pounds</i>	<i>1,000 Pounds</i>	<i>Percent</i>
Butter						
Jan	140,069	141,440	1.0	140,069	141,440	1.0
Feb	124,231	128,362	3.3	264,300	269,802	2.1
Mar	127,695	126,338	-1.1	391,995	396,140	1.1
Apr	131,605	122,715	-6.8	523,600	518,855	-0.9
May	125,484	114,678	-8.6	649,084	633,533	-2.4
Jun	95,818	83,836	-12.5	744,902	717,369	-3.7
Jul	94,409	79,546	-15.7	839,311	796,915	-5.1
Aug	88,883	70,144	-21.1	928,194	867,059	-6.6
Sep	92,818	73,091	-21.3	1,021,012	940,150	-7.9
Oct	102,613	96,990	-5.5	1,123,625	1,037,140	-7.7
Nov	103,932			1,227,557		
Dec	127,591			1,355,148		
Nonfat Dry Milk, Human						
Jan	128,675	133,758	4.0	128,675	133,758	4.0
Feb	127,707	130,355	2.1	256,382	264,113	3.0
Mar	153,057	146,276	-4.4	409,439	410,389	0.2
Apr	164,159	150,404	-8.4	573,598	560,793	-2.2
May	163,379	154,168	-5.6	736,977	714,961	-3.0
Jun	152,982	130,791	-14.5	889,959	845,752	-5.0
Jul	129,071	121,976	-5.5	1,019,030	967,728	-5.0
Aug	117,870	100,673	-14.6	1,136,900	1,068,401	-6.0
Sep	97,191	88,498	-8.9	1,234,091	1,156,899	-6.3
Oct	103,357	99,090	-4.1	1,337,448	1,255,989	-6.1
Nov	99,049			1,436,497		
Dec	132,494			1,568,991		
Total Dry Whey ²						
Jan	90,071	97,664	8.4	90,071	97,664	8.4
Feb	84,430	88,712	5.1	174,501	186,376	6.8
Mar	96,405	101,088	4.9	270,906	287,464	6.1
Apr	93,868	95,034	1.2	364,774	382,498	4.9
May	98,417	100,893	2.5	463,191	483,391	4.4
Jun	93,720	95,163	1.5	556,911	578,554	3.9
Jul	92,358	96,848	4.9	649,269	675,402	4.0
Aug	93,820	90,569	-3.5	743,089	765,971	3.1
Sep	89,639	87,450	-2.4	832,728	853,421	2.5
Oct	93,177	88,095	-5.5	925,905	941,516	1.7
Nov	91,599			1,017,504		
Dec	98,268			1,115,772		

See footnote(s) at end of table.

--continued

**Dairy Products: Production by Product and Month,
United States, 2002-2003 ¹ (continued)**

Product and Month	By Month			Cumulative		
	2002	2003	Change From 2002	2002	2003	Change From 2002
	<i>1,000 Pounds</i>	<i>1,000 Pounds</i>	<i>Percent</i>	<i>1,000 Pounds</i>	<i>1,000 Pounds</i>	<i>Percent</i>
Cream Cottage Cheese						
Jan	30,045	31,386	4.5	30,045	31,386	4.5
Feb	29,034	29,155	0.4	59,079	60,541	2.5
Mar	31,607	31,991	1.2	90,686	92,532	2.0
Apr	31,454	33,949	7.9	122,140	126,481	3.6
May	32,966	32,767	-0.6	155,106	159,248	2.7
Jun	30,787	32,392	5.2	185,893	191,640	3.1
Jul	32,588	34,497	5.9	218,481	226,137	3.5
Aug	33,753	33,123	-1.9	252,234	259,260	2.8
Sep	31,945	32,462	1.6	284,179	291,722	2.7
Oct	31,876	30,090	-5.6	316,055	321,812	1.8
Nov	27,764			343,819		
Dec	28,580			372,399		
Lowfat Cottage Cheese						
Jan	29,525	30,397	3.0	29,525	30,397	3.0
Feb	29,344	29,345		58,869	59,742	1.5
Mar	31,999	32,459	1.4	90,868	92,201	1.5
Apr	31,091	33,234	6.9	121,959	125,435	2.9
May	34,658	32,398	-6.5	156,617	157,833	0.8
Jun	29,266	31,767	8.5	185,883	189,600	2.0
Jul	34,105	33,036	-3.1	219,988	222,636	1.2
Aug	34,778	33,417	-3.9	254,766	256,053	0.5
Sep	31,505	31,629	0.4	286,271	287,682	0.5
Oct	32,349	30,370	-6.1	318,620	318,052	-0.2
Nov	27,292			345,912		
Dec	28,384			374,296		
	<i>1,000 Gallons</i>	<i>1,000 Gallons</i>	<i>Percent</i>	<i>1,000 Gallons</i>	<i>1,000 Gallons</i>	<i>Percent</i>
Ice Cream, Hard						
Jan	69,696	67,337	-3.4	69,696	67,337	-3.4
Feb	69,293	70,615	1.9	138,989	137,952	-0.7
Mar	75,823	73,595	-2.9	214,812	211,547	-1.5
Apr	80,364	79,402	-1.2	295,176	290,949	-1.4
May	77,609	79,138	2.0	372,785	370,087	-0.7
Jun	80,779	83,405	3.3	453,564	453,492	
Jul	82,999	82,942	-0.1	536,563	536,434	
Aug	77,896	75,830	-2.7	614,459	612,264	-0.4
Sep	69,894	71,799	2.7	684,353	684,063	
Oct	70,501	68,666	-2.6	754,854	752,729	-0.3
Nov	57,374			812,228		
Dec	53,903			866,131		

See footnote(s) at end of table.

--continued

**Dairy Products: Production by Product and Month,
United States, 2002-2003 ¹ (continued)**

Product and Month	By Month			Cumulative		
	2002	2003	Change From 2002	2002	2003	Change From 2002
	<i>1,000 Gallons</i>	<i>1,000 Gallons</i>	<i>Percent</i>	<i>1,000 Gallons</i>	<i>1,000 Gallons</i>	<i>Percent</i>
Ice Cream, Lowfat						
Jan	23,520	25,274	7.5	23,520	25,274	7.5
Feb	25,096	25,853	3.0	48,616	51,127	5.2
Mar	30,861	35,416	14.8	79,477	86,543	8.9
Apr	34,564	37,557	8.7	114,041	124,100	8.8
May	37,863	40,445	6.8	151,904	164,545	8.3
Jun	37,347	42,666	14.2	189,251	207,211	9.5
Jul	36,211	42,117	16.3	225,462	249,328	10.6
Aug	34,033	38,545	13.3	259,495	287,873	10.9
Sep	28,540	32,377	13.4	288,035	320,250	11.2
Oct	27,696	30,669	10.7	315,731	350,919	11.1
Nov	22,428			338,159		
Dec	23,428			361,587		
Ice Cream, NF, Hard						
Jan	1,665	1,584	-4.9	1,665	1,584	-4.9
Feb	1,350	1,689	25.1	3,015	3,273	8.6
Mar	1,858	1,580	-15.0	4,873	4,853	-0.4
Apr	1,693	1,908	12.7	6,566	6,761	3.0
May	1,566	1,875	19.7	8,132	8,636	6.2
Jun	1,483	1,935	30.5	9,615	10,571	9.9
Jul	1,546	1,935	25.2	11,161	12,506	12.1
Aug	1,534	1,535	0.1	12,695	14,041	10.6
Sep	1,423	1,553	9.1	14,118	15,594	10.5
Oct	1,572	1,693	7.7	15,690	17,287	10.2
Nov	1,451			17,141		
Dec	1,250			18,391		
Sherbet, Hard						
Jan	3,731	4,056	8.7	3,731	4,056	8.7
Feb	3,904	4,406	12.9	7,635	8,462	10.8
Mar	4,775	5,011	4.9	12,410	13,473	8.6
Apr	5,047	5,438	7.7	17,457	18,911	8.3
May	5,250	5,319	1.3	22,707	24,230	6.7
Jun	5,225	5,835	11.7	27,932	30,065	7.6
Jul	5,478	5,345	-2.4	33,410	35,410	6.0
Aug	4,629	4,699	1.5	38,039	40,109	5.4
Sep	4,124	4,433	7.5	42,163	44,542	5.6
Oct	4,058	3,972	-2.1	46,221	48,514	5.0
Nov	2,934			49,155		
Dec	3,189			52,344		

See footnote(s) at end of table.

--continued

**Dairy Products: Production by Product and Month,
United States, 2002-2003 ¹ (continued)**

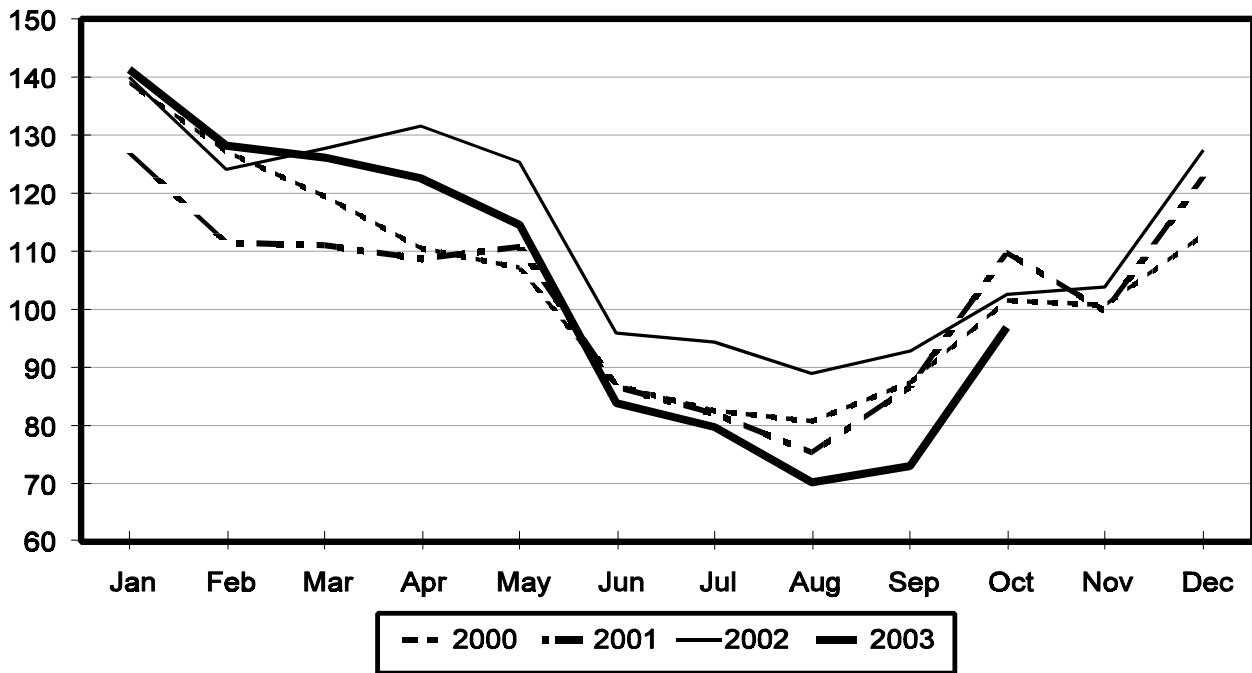
Product and Month	By Month			Cumulative		
	2002	2003	Change From 2002	2002	2003	Change From 2002
	<i>1,000 Gallons</i>	<i>1,000 Gallons</i>	<i>Percent</i>	<i>1,000 Gallons</i>	<i>1,000 Gallons</i>	<i>Percent</i>
Frozen Yogurt						
Jan	5,715	5,719	0.1	5,715	5,719	0.1
Feb	6,012	5,505	-8.4	11,727	11,224	-4.3
Mar	6,696	5,794	-13.5	18,423	17,018	-7.6
Apr	7,156	6,370	-11.0	25,579	23,388	-8.6
May	6,932	6,482	-6.5	32,511	29,870	-8.1
Jun	6,498	5,906	-9.1	39,009	35,776	-8.3
Jul	6,722	5,853	-12.9	45,731	41,629	-9.0
Aug	6,619	5,610	-15.2	52,350	47,239	-9.8
Sep	6,046	5,360	-11.3	58,396	52,599	-9.9
Oct	5,842	4,840	-17.2	64,238	57,439	-10.6
Nov	4,937			69,175		
Dec	4,231			73,406		

¹ September 2003 data revised.

² Excludes all modified dry whey products.

Total Butter Production United States

Million Pounds



Total Cheese, Excluding Cottage Cheese: Production by State and United States, October 2002-2003

State	Oct 2002	Sep ¹ 2003	Oct 2003	Change From	
				Oct 2002	Sep 2003
	<i>1,000 Pounds</i>	<i>1,000 Pounds</i>	<i>1,000 Pounds</i>	<i>Percent</i>	<i>Percent</i>
CA	144,636	151,764	155,083	7.2	2.2
ID	53,195	56,473	58,587	10.1	3.7
IL	8,708	7,943	7,182	-17.5	-9.6
IA	24,114	18,707	18,950	-21.4	1.3
MA	68	70	75	10.3	7.1
MN	46,314	47,114	47,579	2.7	1.0
MO	9,079	9,509	8,918	-1.8	-6.2
NY	61,527	62,566	65,477	6.4	4.7
OH	14,577	12,784	14,948	2.5	16.9
PA	30,751	28,434	30,310	-1.4	6.6
SD	13,464	12,079	13,070	-2.9	8.2
UT	4,566	6,262	6,609	44.7	5.5
WA	13,427				
WI	195,398	186,913	196,897	0.8	5.3
Oth Sts ²	112,333	111,490	115,533	2.8	3.6
US	732,157	712,108	739,218	1.0	3.8
N Atlantic	111,245	107,708	113,267	1.8	5.2
S Atlantic	3,273	3,332	3,174	-3.0	-4.7
E N Central	232,727	218,327	230,193	-1.1	5.4
W N Central	101,319	89,383	90,814	-10.4	1.6
S Central	6,501	6,697	6,829	5.0	2.0
West	277,092	286,661	294,941	6.4	2.9

¹ Revised.

² States not shown when fewer than 3 plants reported or individual plant operations could be disclosed. Percent change shown only when comparable States are included in the calculation.

American Cheese: Production by State and United States, October 2002-2003

State	Oct 2002	Sep ¹ 2003	Oct 2003	Change From	
				Oct 2002	Sep 2003
	<i>1,000 Pounds</i>	<i>1,000 Pounds</i>	<i>1,000 Pounds</i>	<i>Percent</i>	<i>Percent</i>
CA	66,923	63,229	65,195	-2.6	3.1
ID	38,654	41,154	41,538	7.5	0.9
IA	11,653	10,087	10,047	-13.8	-0.4
MN	44,619	44,790	45,605	2.2	1.8
NY	4,799	4,554	5,021	4.6	10.3
OH	3,164	2,337	2,625	-17.0	12.3
OR	8,134	8,176	8,860	8.9	8.4
SD	6,651	6,475	7,129	7.2	10.1
WA	13,410				
WI	69,268	62,810	68,800	-0.7	9.5
Oth Sts ²	30,565	46,453	47,773	56.3	2.8
US	297,840	290,065	302,593	1.6	4.3
Atlantic	9,727	9,665	11,565	18.9	19.7
E N Central	73,990	66,533	72,800	-1.6	9.4
W N Central	63,916	61,751	63,244	-1.1	2.4
S Central	3,635	4,159	3,913	7.6	-5.9
West	146,572	147,957	151,071	3.1	2.1

¹ Revised.

² States not shown when fewer than 3 plants reported or individual plant operations could be disclosed. Percent change shown only when comparable States are included in the calculation.

Cheddar Cheese: Production by State and United States, October 2002-2003

State	Oct 2002	Sep ¹ 2003	Oct 2003	Change From	
				Oct 2002	Sep 2003
	<i>1,000 Pounds</i>	<i>1,000 Pounds</i>	<i>1,000 Pounds</i>	<i>Percent</i>	<i>Percent</i>
CA	46,087	40,390	40,293	-12.6	-0.2
ID	15,305	19,957	19,261	25.8	-3.5
MN	42,184	40,883	41,952	-0.5	2.6
NY	4,723	4,427	4,885	3.4	10.3
SD	3,649	3,855	2,285	-37.4	-40.7
WA	10,687				
WI	53,505	48,300	53,300	-0.4	10.4
Oth Sts ²	42,979	56,320	58,446	36.0	3.8
US	219,119	214,132	220,422	0.6	2.9
Atlantic	9,473	9,187	10,936	15.4	19.0
E N Cen	55,997	50,357	55,603	-0.7	10.4
W N Cen	52,425	52,034	51,551	-1.7	-0.9
S Cen	3,635	4,159	3,912	7.6	-5.9
West	97,589	98,395	98,420	0.9	

¹ Revised.

² States not shown when fewer than 3 plants reported or individual plant operations could be disclosed. Percent change shown only when comparable States are included in the calculation.

Mozzarella Cheese: Production by State and United States, October 2002-2003

State	Oct 2002	Sep ¹ 2003	Oct 2003	Change From	
				Oct 2002	Sep 2003
	<i>1,000 Pounds</i>	<i>1,000 Pounds</i>	<i>1,000 Pounds</i>	<i>Percent</i>	<i>Percent</i>
CA	60,385	67,118	68,837	14.0	2.6
NY	16,814	16,069	17,482	4.0	8.8
PA	14,576	13,245	13,562	-7.0	2.4
WI	64,891	66,910	65,600	1.1	-2.0
Oth Sts ²	80,628	65,782	68,275	-15.3	3.8
US	237,294	229,124	233,756	-1.5	2.0
Atlantic ³	42,348	37,747	38,704	-8.6	2.5
E N Central	77,031	76,236	75,304	-2.2	-1.2
West	101,820	105,728	110,087	8.1	4.1

¹ Revised.

² States not shown when fewer than 3 plants reported or individual plant operations could be disclosed. Percent change shown only when comparable States are included in the calculation.

³ Region totals may not add to U.S. when compiled regions could not be disclosed.

Butter: Production by State and United States, October 2002-2003

State	Oct 2002	Sep ¹ 2003	Oct 2003	Change From	
				Oct 2002	Sep 2003
	<i>1,000 Pounds</i>	<i>1,000 Pounds</i>	<i>1,000 Pounds</i>	<i>Percent</i>	<i>Percent</i>
CA	27,252	25,141	30,483	11.9	21.2
NY	1,556	2,263	2,076	33.4	-8.3
PA	5,846	2,005	4,293	-26.6	114.1
WA	9,695				
WI	26,711	17,000	23,300	-12.8	37.1
Oth Sts ²	31,553	26,682	36,838	16.7	38.1
US	102,613	73,091	96,990	-5.5	32.7
N Atlantic ³	11,014	6,734	9,848	-10.6	46.2
E N Central	30,650	18,593	26,890	-12.3	44.6
W N Central	7,272	4,984	6,599	-9.3	32.4
West	42,635	37,749	43,061	1.0	14.1

¹ Revised.

² States not shown when fewer than 3 plants reported or individual plant operations could be disclosed. Percent change shown only when comparable States are included in the calculation.

³ Region totals may not add to U.S. when compiled regions could not be disclosed.

**Nonfat Dry Milk, Human: Production by State
and United States, October 2002-2003**

State	Oct 2002	Sep ¹ 2003	Oct 2003	Change From	
				Oct 2002	Sep 2003
	<i>1,000 Pounds</i>	<i>1,000 Pounds</i>	<i>1,000 Pounds</i>	<i>Percent</i>	<i>Percent</i>
CA	59,329	51,021	57,926	-2.4	13.5
ID	5,990	5,074	4,276	-28.6	-15.7
WA	14,819				
Oth Sts ²	23,219	32,403	36,888	58.9	13.8
US	103,357	88,498	99,090	-4.1	12.0
Atlantic	4,415	2,583	6,057	37.2	134.5
E N Central	2,379	2,563	3,890	63.5	51.8
W N Central	3,970	2,411	3,160	-20.4	31.1
S Central	2,370	4,038	2,326	-1.9	-42.4
West	90,223	76,903	83,657	-7.3	8.8

¹ Revised.

² States not shown when fewer than 3 plants reported or individual plant operations could be disclosed. Percent change shown only when comparable States are included in the calculation.

**Dry Whey, Human: Production by State
and United States, October 2002-2003**

State	Oct 2002	Sep ¹ 2003	Oct 2003	Change From	
				Oct 2002	Sep 2003
	<i>1,000 Pounds</i>	<i>1,000 Pounds</i>	<i>1,000 Pounds</i>	<i>Percent</i>	<i>Percent</i>
CA	13,991	9,309	10,357	-26.0	11.3
MN	7,159	8,172	7,389	3.2	-9.6
NY	9,470	10,112	10,031	5.9	-0.8
PA	8,769	6,672	6,696	-23.6	0.4
WA	7,325				
WI	26,172	24,357	24,700	-5.6	1.4
Oth Sts ²	15,763	20,168	23,065	46.3	14.4
US	88,649	78,790	82,238	-7.2	4.4
Atlantic	18,239	16,784	16,727	-8.3	-0.3
Central	44,742	40,849	42,208	-5.7	3.3
West	25,668	21,157	23,303	-9.2	10.1

¹ Revised.

² States not shown when fewer than 3 plants reported or individual plant operations could be disclosed. Percent change shown only when comparable States are included in the calculation.

Ice Cream, Hard: Production by State and United States, October 2002-2003

State	Oct 2002	Sep ¹ 2003	Oct 2003	Change From	
				Oct 2002	Sep 2003
	<i>1,000 Gallons</i>	<i>1,000 Gallons</i>	<i>1,000 Gallons</i>	<i>Percent</i>	<i>Percent</i>
CA	8,832	10,786	9,276	5.0	-14.0
FL	1,657	2,380	2,400	44.8	0.8
IL	2,293	2,050	2,185	-4.7	6.6
IN	7,493	6,695	6,163	-17.7	-7.9
MD	1,839	1,521	1,667	-9.4	9.6
MA	6,035	5,040	6,273	3.9	24.5
MI	1,625	1,540	1,454	-10.5	-5.6
MN	3,188	3,986	2,854	-10.5	-28.4
MO	1,600	1,864	1,627	1.7	-12.7
NY	2,487	2,700	2,550	2.5	-5.6
NC	1,689	1,696	1,170	-30.7	-31.0
OH	2,616	2,454	2,204	-15.7	-10.2
OR	809	942	908	12.2	-3.6
PA	3,891	3,570	3,725	-4.3	4.3
SD	1	2	3	200.0	50.0
TN	1,141	1,594	1,291	13.1	-19.0
TX	4,002	3,998	3,896	-2.6	-2.6
UT	1,034	1,847	1,608	55.5	-12.9
WA	821	873	901	9.7	3.2
Oth Sts ²	17,448	16,261	16,511	-5.4	1.5
US	70,501	71,799	68,666	-2.6	-4.4
N Atlantic	15,153	13,618	14,676	-3.1	7.8
S Atlantic	6,765	6,975	6,443	-4.8	-7.6
E N Central	14,852	13,519	12,843	-13.5	-5.0
W N Central	11,075	11,703	11,219	1.3	-4.1
S Central	8,371	9,144	8,552	2.2	-6.5
West	14,285	16,840	14,933	4.5	-11.3

¹ Revised.

² States not shown when fewer than 3 plants reported or individual plant operations could be disclosed. Percent change shown only when comparable States are included in the calculation.

**Canned Milk and Dry Milk Products: Manufacturers' Shipments,
Stocks, and Selling Prices, October, 2002-2003**

Product	Oct 2002	Sep 2003 ¹	Oct 2003	Change From	
				Oct 2002	Sep 2003
Nonfat Dry Milk, Human ³	Manufacturers' Shipments ²				
	<i>1,000 Pounds</i>	<i>1,000 Pounds</i>	<i>1,000 Pounds</i>	<i>Percent</i>	<i>Percent</i>
	100,684	98,118	96,682	-4.0	-1.5
Canned Evaporated and Condensed Whole Milk Nonfat Dry Milk, Human Dry Buttermilk, Total ⁵	Manufacturers' Stocks End-of-Month ⁴				
	<i>1,000 Pounds</i>	<i>1,000 Pounds</i>	<i>1,000 Pounds</i>	<i>Percent</i>	<i>Percent</i>
	61,451	76,770	69,519	13.1	-9.4
	69,340	69,222	67,012	-3.4	-3.2
	4,648	2,269	2,074	-55.4	-8.6

¹ Revised.

² For dry products, shipments of bulk goods only.

³ Preliminary revisions for Manufacturer's Shipments and Stocks End-of-Month for Nonfat Dry Milk, Human, for 2002 and 2003 can be found in the table below.

⁴ Stocks held by manufacturers at all points and in transit.

⁵ Preliminary revisions for Stocks End-of-Month for Dry Buttermilk, Total, for 2002 and 2003 can be found in the table below.

**Preliminary Revisions: Nonfat Dry Milk, Human
2002-2003**

Month	Manufacturer's Shipments		Stocks	
	2002	2003	2002	2003
	<i>1,000 Pounds</i>	<i>1,000 Pounds</i>	<i>1,000 Pounds</i>	<i>1,000 Pounds</i>
Jan	133,335	119,849	101,116	99,593
Feb	112,323	107,906	126,759	104,460
Mar	129,756	126,071	139,682	122,376
Apr	154,477	141,728	140,830	128,840
May	162,830	142,414	142,938	128,322
Jun	149,937	133,564	147,811	123,163
Jul	146,262	145,280	126,070	89,508
Aug	148,557	104,571	94,471	75,266
Sep	117,283	98,118	71,655	69,222
Oct	100,684	96,682	69,340	67,012
Nov	87,522		73,912	
Dec	104,962		90,501	

**Preliminary Revisions: Dry Buttermilk, Total
2002-2003**

Month	Stocks	
	2002	2003
	<i>1,000 Pounds</i>	<i>1,000 Pounds</i>
Jan	7,835	9,226
Feb	8,035	9,027
Mar	8,506	10,015
Apr	11,344	11,156
May	12,020	9,469
Jun	11,726	7,043
Jul	10,926	2,521
Aug	8,332	2,335
Sep	6,916	2,269
Oct	4,648	2,074
Nov	5,766	
Dec	7,451	

Procedures and Reliability: Estimates included in this report are based on data provided each month by manufacturers of these products. In 32 States, the State Departments of Agriculture assist in collection of data, which eliminates duplicate reporting and reduces respondent burden. Data are collected by mail, personal and telephone interviews following the close of each month. There were 1,153 manufacturers that made one or more products in 2002. Each month, reports are generally received from all dairy plants in States with small numbers of plants. In States with large numbers of plants, survey procedures are designed to obtain monthly reports from all large plants and from a sample of small plants. Monthly estimates are based upon returns from about 70 percent of the plants which account for 70 to 90 percent of the total production of major dairy products.

Revision Policy: Monthly estimates are subject to revision the month following the preliminary estimates. Annual estimates are published in the "**Dairy Products**" report published each April which includes any revisions made to current and previous year. An attempt is made to get information from all plants for preparing these estimates.

The next "*Dairy Products*" report will be released at 3 p.m. ET on January 5, 2004.

The United States Department of Agriculture (USDA) prohibits discrimination in all its programs on the basis of race, color, national origin, gender, religion, age, disability, political beliefs, sexual orientation, and marital or family status. (Not all prohibited bases apply to all programs.) Persons with disabilities who require alternative means for communication of program information (braille, large print, audiotape, etc.) should contact the USDA's TARGET Center at 202-720-2600 (voice and TDD).

To file a complaint of discrimination, write USDA, Director, Office of Civil Rights, Room 326-W, Whitten Building, 1400 Independence Avenue, SW, Washington, D.C., 20250-9410, or call 202-720-5964 (voice or TDD). USDA is an equal opportunity provider and employer.

ACCESS TO REPORTS!!

For your convenience, there are several ways to obtain NASS reports, data products, and services:

INTERNET ACCESS

All NASS reports are available free of charge on the worldwide Internet. For access, connect to the Internet and go to the NASS Home Page at: <http://www.usda.gov/nass/>. Select "Today's Reports" or Publications and then Reports Calendar or Publications and then Search, by Title or Subject.

E-MAIL SUBSCRIPTION

All NASS reports are available by subscription free of charge direct to your e-mail address. Starting with the NASS Home Page at <http://www.usda.gov/nass/>, click on **Publications**, then click on the **Subscribe by E-mail** button which takes you to the page describing e-mail delivery of reports. Finally, click on **Go to the Subscription Page** and follow the instructions.

PRINTED REPORTS OR DATA PRODUCTS

CALL OUR TOLL-FREE ORDER DESK: 800-999-6779 (U.S. and Canada)
Other areas, please call 703-605-6220 FAX: 703-605-6900
(Visa, MasterCard, check, or money order acceptable for payment.)

ASSISTANCE

For **assistance** with general agricultural statistics or further information about NASS or its products or services, contact the **Agricultural Statistics Hotline** at **800-727-9540**, 7:30 a.m. to 4:00 p.m. ET, or e-mail: nass@nass.usda.gov.
