

Released January 5, 2004, by the National Agricultural Statistics Service (NASS), Agricultural Statistics Board, U.S. Department of Agriculture. For information on "Dairy Products" call Kevin Pautler at (202) 720-9168, office hours 7:30 a.m. to 4:00 p.m. ET.

November 2003 Highlights

Total cheese output (excluding cottage cheese) was 718 million pounds, 1.0 percent below November 2002 and 3.1 percent below October 2003.

American type cheese production totaled 294 million pounds, 0.3 percent below November 2002 and 3.6 percent below October 2003.

Butter production was 88.1 million pounds in November, 15.2 percent below November 2002 and 9.2 percent below October 2003.

Frozen dessert: (comparisons with November 2002)

Ice cream, Regular (hard) --- 58.1 million gallons, up 1.3 percent.

Ice cream, Lowfat (total) --- 24.7 million gallons, up 10.3 percent.

Ice cream, Nonfat (hard) --- 1.47 million gallons, up 1.3 percent.

Sherbet (hard) --- 3.44 million gallons, up 17.3 percent.

Frozen Yogurt (total) --- 4.29 million gallons, down 13.2 percent.

Nonfat dry milk for human food: (compared with November 2002) --- 102 million pounds, up 3.3 percent.

Dry whey products: (comparisons with November 2002)

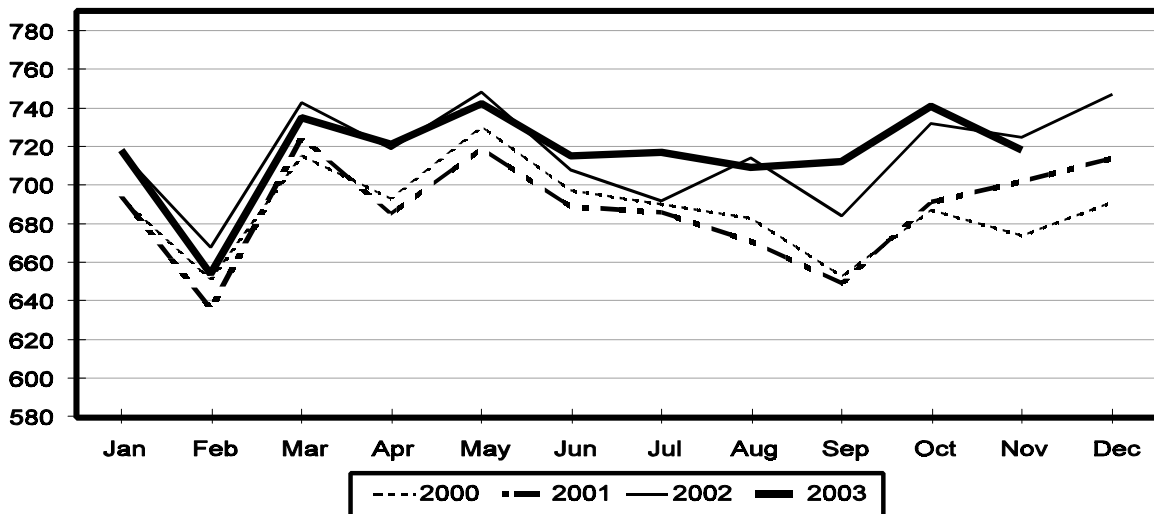
Dry whey, human --- 76.9 million pounds, down 10.5 percent.

Dry whey, animal --- 7.21 million pounds, up 27.7 percent.

Dry whey, total --- 84.1 million pounds, down 8.2 percent.

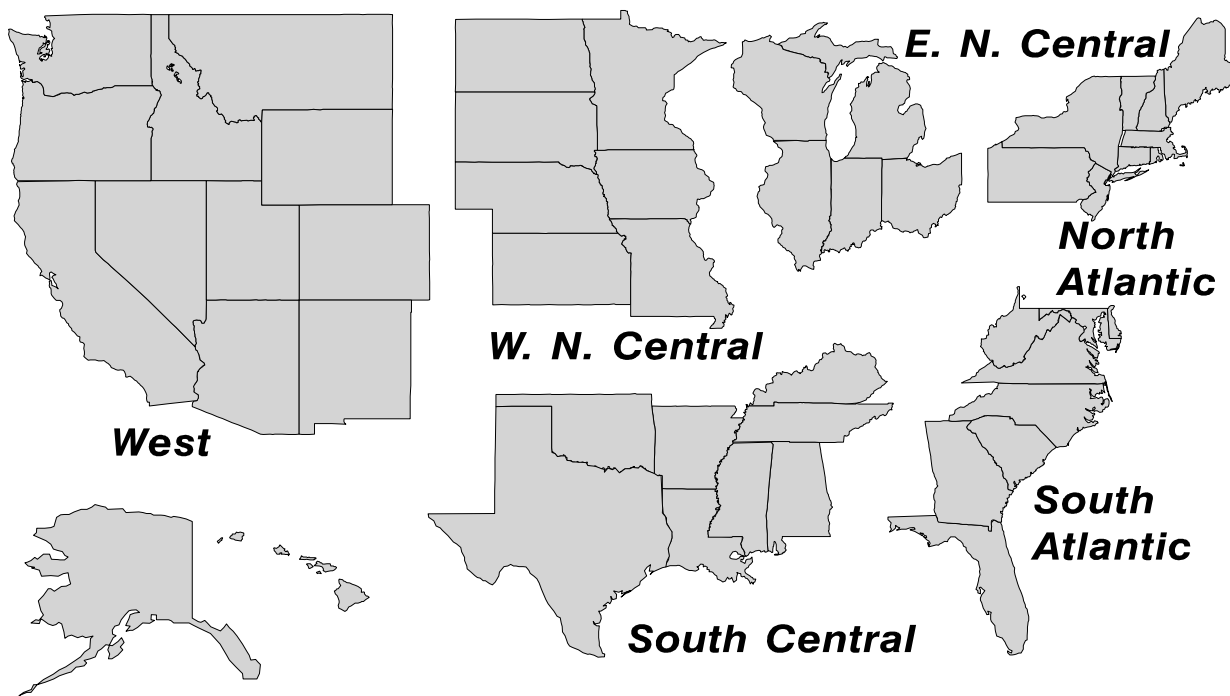
Total Cheese Production United States

Million Pounds



U. S. Geographic Regions Dairy Products

State totals are not published when fewer than 3 firms have reported or one firm comprises more than 60 percent of the State total. If we are not able to publish a region for confidentiality reasons, it will be combined with other regions when possible. For example, if North Atlantic can not be published, then it will be combined with South Atlantic to publish Atlantic. The West North Central and East North Central will be combined, if necessary, to form North Central. In the event that neither could be published, they may be combined with South Central to publish Central. Some tables will have only limited regions shown, therefore the regions may not add to the United States total.



**Dairy Products: Production by Product,
United States, November, 2002-2003**

Product	Nov 2002	Oct 2003 ¹	Nov 2003	Change From	
				Nov 2002	Oct 2003
	<i>1,000 Pounds</i>	<i>1,000 Pounds</i>	<i>1,000 Pounds</i>	<i>Percent</i>	<i>Percent</i>
Butter	103,932	97,040	88,120	-15.2	-9.2
Cheese					
American Types ²	294,363	304,497	293,545	-0.3	-3.6
Cheddar	219,669	221,082	215,304	-2.0	-2.6
Swiss	21,737	23,597	22,306	2.6	-5.5
Brick and Muenster	7,300	8,226	7,252	-0.7	-11.8
Cream and Neufchatel	78,146	75,329	75,102	-3.9	-0.3
Hispanic	9,944	10,698	9,983	0.4	-6.7
Mozzarella	234,783	233,677	232,788	-0.8	-0.4
Other Italian Types	62,617	64,915	58,806	-6.1	-9.4
Total Italian Types	297,400	298,592	291,594	-2.0	-2.3
All Other Types	16,554	20,429	18,444	11.4	-9.7
Total	725,444	741,368	718,226	-1.0	-3.1
Cottage Cheese, Curd ³	32,678	36,706	35,632	9.0	-2.9
Cottage Cheese, Cream ⁴	27,764	31,740	27,966	0.7	-11.9
Cottage Cheese, Lowfat ⁵	27,292	32,950	28,920	6.0	-12.2
Canned Evaporated and Condensed Whole Milk	44,252	47,256	46,702	5.5	-1.2
Dry Whole Milk	3,434	2,864	4,831	40.7	68.7
Nonfat Dry Milk, Human	99,049	99,018	102,352	3.3	3.4
Dry Skim Milk, Animal	353	475	336	-4.8	-29.3
Dry Buttermilk	3,603	3,592	3,341	-7.3	-7.0
Sour Cream ⁶		80,760	87,951		8.9
Yogurt, Plain & Flavored	151,129	192,647	175,306	16.0	-9.0
	<i>1,000 Gallons</i>	<i>1,000 Gallons</i>	<i>1,000 Gallons</i>	<i>Percent</i>	<i>Percent</i>
Frozen Products					
Ice Cream, Hard	57,374	68,751	58,131	1.3	-15.4
Ice Cream, Lowfat, Hard	6,416	7,835	6,299	-1.8	-19.6
Ice Cream, Lowfat, Soft	16,012	22,749	18,436	15.1	-19.0
Ice Cream, Lowfat, Total	22,428	30,584	24,735	10.3	-19.1
Ice Cream, Nonfat, Hard	1,451	1,690	1,470	1.3	-13.0
Sherbet, Hard	2,934	4,079	3,443	17.3	-15.6
Water and Juice Ices	3,202	4,059	3,410	6.5	-16.0
Frozen Yogurt, Total	4,937	4,879	4,287	-13.2	-12.1
Regular & Lowfat, Hard	1,733	1,869	1,514	-12.6	-19.0
Nonfat, Hard	962	978	810	-15.8	-17.2
Other Frozen Dairy Products	427	677	447	4.7	-34.0
Mix for Frozen Products					
Ice Cream Mix	33,998	40,292	33,415	-1.7	-17.1
Ice Cream, Lowfat, Mix	12,868	16,976	13,731	6.7	-19.1
Ice Cream, Nonfat, Mix	1,016	1,193	999	-1.7	-16.3
Sherbet Mix	2,375	2,715	2,350	-1.1	-13.4
Yogurt Mix	2,933	2,870	2,522	-14.0	-12.1

¹ Revised.

² Includes Cheddar, Colby, Monterey, and Jack.

³ Mostly used for processing into cream or lowfat cottage cheese.

⁴ Fat content 4 percent or more.

⁵ Fat content less than 4 percent.

⁶ Corrected totals due to errors in reporting unit: January 76,716; February 64,282; and March 75,689 million pounds.

**Whey and Modified Whey Products: Production, Stocks,
and Prices, United States, November, 2002-2003**

Product	Nov 2002	Oct 2003 ¹	Nov 2003	Change From	
				Nov 2002	Oct 2003
Production					
	<i>1,000 Pounds</i>	<i>1,000 Pounds</i>	<i>1,000 Pounds</i>	<i>Percent</i>	<i>Percent</i>
Condensed Whey, Solids Content ²					
Sweet-Type, Human	8,439	10,810	9,015	6.8	-16.6
Sweet-Type, Animal ³					
Dry Whey Products					
Dry Whey, Human	85,953	82,840	76,910	-10.5	-7.2
Dry Whey, Animal	5,646	5,867	7,212	27.7	22.9
Dry Whey, Total	91,599	88,707	84,122	-8.2	-5.2
Reduced Lactose and Minerals					
Human Food	3,560	3,684	3,160	-11.2	-14.2
Animal Feed	3,199	3,447	3,154	-1.4	-8.5
Lactose, Human and Animal	46,177	52,430	51,496	11.5	-1.8
Whey					
Solids in Wet Blends, Animal ³	3,877	3,528	3,751	-3.2	6.3
Protein Concentrate, Human ⁷	23,137	22,447	21,252	-8.1	-5.3
Protein Concentrate, Animal ⁷	3,185	3,592	3,669	15.2	2.1
Manufacturers' Stocks End-of-Month ⁴					
	<i>1,000 Pounds</i>	<i>1,000 Pounds</i>	<i>1,000 Pounds</i>	<i>Percent</i>	<i>Percent</i>
Dry Whey Products					
Dry Whey, Human	36,631	36,772	39,861	8.8	8.4
Dry Whey, Animal	3,126	3,057	4,552	45.6	48.9
Reduced Lactose and Minerals					
Human and Animal ⁵	9,109	7,958	7,701	-15.5	-3.2
Lactose, Human and Animal	39,280	42,385	43,602	11.0	2.9
Whey Protein Concentrate, Human ⁷	22,135	22,863	21,942	-0.9	-4.0
Whey Protein Concentrate, Animal ⁷	1,429	2,272	2,646	85.2	16.5
Manufacturers' Selling Price ⁶					
	<i>Cents per Pound</i>	<i>Cents per Pound</i>	<i>Cents per Pound</i>	<i>Cents Change</i>	<i>Cents Change</i>
Dry Whey, Animal	21.5	17.9	19.1	-2.4	1.2

¹ Revised.

² Final marketable product only. Does not include quantity used or shipped to another plant for further processing into dry whey or modified whey products.

³ Not shown when fewer than three plants reported or individual plant operations could be disclosed

⁴ Stocks held by manufacturers at all points and in transit.

⁵ Reduced lactose and minerals stocks combined to avoid disclosure of individual operations.

⁶ Prices for bulk goods, f.o.b. plant. Average monthly prices reported by firms.

⁷ Whey Protein Concentrate, 25.0 to 89.9 percent.

**Dairy Products: Production by Product and Month,
United States, 2002-2003 ¹**

Product and Month	By Month			Cumulative		
	2002	2003	Change From 2002	2002	2003	Change From 2002
	<i>1,000 Pounds</i>	<i>1,000 Pounds</i>	<i>Percent</i>	<i>1,000 Pounds</i>	<i>1,000 Pounds</i>	<i>Percent</i>
Total Cheese ³						
Jan	717,454	717,763		717,454	717,763	
Feb	667,887	653,516	-2.2	1,385,341	1,371,279	-1.0
Mar	742,764	735,370	-1.0	2,128,105	2,106,649	-1.0
Apr	719,231	721,438	0.3	2,847,336	2,828,087	-0.7
May	748,263	742,179	-0.8	3,595,599	3,570,266	-0.7
Jun	708,284	714,533	0.9	4,303,883	4,284,799	-0.4
Jul	692,195	717,211	3.6	4,996,078	5,002,010	0.1
Aug	714,314	709,043	-0.7	5,710,392	5,711,053	
Sep	683,895	712,108	4.1	6,394,287	6,423,161	0.5
Oct	732,157	741,368	1.3	7,126,444	7,164,529	0.5
Nov	725,444	718,226	-1.0	7,851,888	7,882,755	0.4
Dec	747,161			8,599,049		
American Cheese						
Jan	317,538	319,517	0.6	317,538	319,517	0.6
Feb	292,857	285,649	-2.5	610,395	605,166	-0.9
Mar	322,054	318,491	-1.1	932,449	923,657	-0.9
Apr	320,432	308,599	-3.7	1,252,881	1,232,256	-1.6
May	329,921	320,185	-3.0	1,582,802	1,552,441	-1.9
Jun	313,998	307,233	-2.2	1,896,800	1,859,674	-2.0
Jul	305,409	306,545	0.4	2,202,209	2,166,219	-1.6
Aug	309,640	302,139	-2.4	2,511,849	2,468,358	-1.7
Sep	287,537	290,065	0.9	2,799,386	2,758,423	-1.5
Oct	297,840	304,497	2.2	3,097,226	3,062,920	-1.1
Nov	294,363	293,545	-0.3	3,391,589	3,356,465	-1.0
Dec	317,426			3,709,015		
Cheddar Cheese						
Jan	246,385	247,786	0.6	246,385	247,786	0.6
Feb	227,721	218,823	-3.9	474,106	466,609	-1.6
Mar	253,112	242,232	-4.3	727,218	708,841	-2.5
Apr	253,909	234,713	-7.6	981,127	943,554	-3.8
May	258,360	240,929	-6.7	1,239,487	1,184,483	-4.4
Jun	243,222	231,985	-4.6	1,482,709	1,416,468	-4.5
Jul	232,613	231,588	-0.4	1,715,322	1,648,056	-3.9
Aug	231,669	227,936	-1.6	1,946,991	1,875,992	-3.6
Sep	214,095	214,132	0.2	2,161,086	2,090,124	-3.3
Oct	219,119	221,082	0.9	2,380,205	2,311,206	-2.9
Nov	219,669	215,304	-2.0	2,599,874	2,526,510	-2.8
Dec	240,203			2,840,077		

See footnote(s) at end of table.

--continued

**Dairy Products: Production by Product and Month,
United States, 2002-2003 ¹ (continued)**

Product and Month	By Month			Cumulative		
	2002	2003	Change From 2002	2002	2003	Change From 2002
	<i>1,000 Pounds</i>	<i>1,000 Pounds</i>	<i>Percent</i>	<i>1,000 Pounds</i>	<i>1,000 Pounds</i>	<i>Percent</i>
Italian Cheese ³						
Jan	296,654	293,345	-1.1	296,654	293,345	-1.1
Feb	278,013	272,616	-1.9	574,667	565,961	-1.5
Mar	307,324	305,440	-0.6	881,991	871,401	-1.2
Apr	289,919	303,372	4.6	1,171,910	1,174,773	0.2
May	305,072	307,923	0.9	1,476,982	1,482,696	0.4
Jun	280,388	293,488	4.7	1,757,370	1,776,184	1.1
Jul	275,506	292,661	6.2	2,032,876	2,068,845	1.8
Aug	285,840	291,828	2.1	2,318,716	2,360,673	1.8
Sep	277,883	290,995	4.7	2,596,599	2,651,668	2.1
Oct	300,818	298,592	-0.7	2,897,417	2,950,260	1.8
Nov	297,400	291,594	-2.0	3,194,817	3,241,854	1.5
Dec	311,661			3,506,478		
Mozzarella						
Jan	236,958	232,355	-1.9	236,958	232,355	-1.9
Feb	223,384	218,084	-2.4	460,342	450,439	-2.2
Mar	246,569	243,230	-1.4	706,911	693,669	-1.9
Apr	231,324	242,905	5.0	938,235	936,574	-0.2
May	247,659	252,404	1.9	1,185,894	1,188,978	0.3
Jun	228,778	237,956	4.0	1,414,672	1,426,934	0.9
Jul	222,293	235,700	6.0	1,636,965	1,662,634	1.6
Aug	229,911	235,603	2.5	1,866,876	1,898,237	1.7
Sep	226,158	229,124	1.3	2,093,034	2,127,361	1.6
Oct	237,294	233,677	-1.5	2,330,328	2,361,038	1.3
Nov	234,783	232,788	-0.8	2,565,111	2,593,826	1.1
Dec	248,601			2,813,712		
Other Italian						
Jan	59,696	60,990	2.2	59,696	60,990	2.2
Feb	54,629	54,532	-0.2	114,325	115,522	1.0
Mar	60,755	62,210	2.4	175,080	177,732	1.5
Apr	58,595	60,467	3.2	233,675	238,199	1.9
May	57,413	55,519	-3.3	291,088	293,718	0.9
Jun	51,610	55,532	7.6	342,698	349,250	1.9
Jul	53,213	56,961	7.0	395,911	406,211	2.6
Aug	55,929	56,225	0.5	451,840	462,436	2.3
Sep	51,725	61,871	19.6	503,565	524,307	4.1
Oct	63,524	64,915	2.2	567,089	589,222	3.9
Nov	62,617	58,806	-6.1	629,706	648,028	2.9
Dec	63,060			692,766		

See footnote(s) at end of table.

--continued

**Dairy Products: Production by Product and Month,
United States, 2002-2003 ¹ (continued)**

Product and Month	By Month			Cumulative		
	2002	2003	Change From 2002	2002	2003	Change From 2002
	<i>1,000 Pounds</i>	<i>1,000 Pounds</i>	<i>Percent</i>	<i>1,000 Pounds</i>	<i>1,000 Pounds</i>	<i>Percent</i>
Butter						
Jan	140,069	141,440	1.0	140,069	141,440	1.0
Feb	124,231	128,362	3.3	264,300	269,802	2.1
Mar	127,695	126,338	-1.1	391,995	396,140	1.1
Apr	131,605	122,715	-6.8	523,600	518,855	-0.9
May	125,484	114,678	-8.6	649,084	633,533	-2.4
Jun	95,818	83,836	-12.5	744,902	717,369	-3.7
Jul	94,409	79,546	-15.7	839,311	796,915	-5.1
Aug	88,883	70,144	-21.1	928,194	867,059	-6.6
Sep	92,818	73,091	-21.3	1,021,012	940,150	-7.9
Oct	102,613	97,040	-5.4	1,123,625	1,037,190	-7.7
Nov	103,932	88,120	-15.2	1,227,557	1,125,310	-8.3
Dec	127,591			1,355,148		
Nonfat Dry Milk, Human						
Jan	128,675	133,758	4.0	128,675	133,758	4.0
Feb	127,707	130,355	2.1	256,382	264,113	3.0
Mar	153,057	146,276	-4.4	409,439	410,389	0.2
Apr	164,159	150,404	-8.4	573,598	560,793	-2.2
May	163,379	154,168	-5.6	736,977	714,961	-3.0
Jun	152,982	130,791	-14.5	889,959	845,752	-5.0
Jul	129,071	121,976	-5.5	1,019,030	967,728	-5.0
Aug	117,870	100,673	-14.6	1,136,900	1,068,401	-6.0
Sep	97,191	88,498	-8.9	1,234,091	1,156,899	-6.3
Oct	103,357	99,018	-4.2	1,337,448	1,255,917	-6.1
Nov	99,049	102,352	3.3	1,436,497	1,358,269	-5.4
Dec	132,494			1,568,991		
Total Dry Whey ²						
Jan	90,071	97,664	8.4	90,071	97,664	8.4
Feb	84,430	88,712	5.1	174,501	186,376	6.8
Mar	96,405	101,088	4.9	270,906	287,464	6.1
Apr	93,868	95,034	1.2	364,774	382,498	4.9
May	98,417	100,893	2.5	463,191	483,391	4.4
Jun	93,720	95,163	1.5	556,911	578,554	3.9
Jul	92,358	96,848	4.9	649,269	675,402	4.0
Aug	93,820	90,569	-3.5	743,089	765,971	3.1
Sep	89,639	87,450	-2.4	832,728	853,421	2.5
Oct	93,177	88,707	-4.8	925,905	942,128	1.8
Nov	91,599	84,122	-8.2	1,017,504	1,026,250	0.9
Dec	98,268			1,115,772		

See footnote(s) at end of table.

--continued

**Dairy Products: Production by Product and Month,
United States, 2002-2003 ¹ (continued)**

Product and Month	By Month			Cumulative		
	2002	2003	Change From 2002	2002	2003	Change From 2002
	<i>1,000 Pounds</i>	<i>1,000 Pounds</i>	<i>Percent</i>	<i>1,000 Pounds</i>	<i>1,000 Pounds</i>	<i>Percent</i>
Cream Cottage Cheese						
Jan	30,045	31,386	4.5	30,045	31,386	4.5
Feb	29,034	29,155	0.4	59,079	60,541	2.5
Mar	31,607	31,991	1.2	90,686	92,532	2.0
Apr	31,454	33,949	7.9	122,140	126,481	3.6
May	32,966	32,767	-0.6	155,106	159,248	2.7
Jun	30,787	32,392	5.2	185,893	191,640	3.1
Jul	32,588	34,497	5.9	218,481	226,137	3.5
Aug	33,753	33,123	-1.9	252,234	259,260	2.8
Sep	31,945	32,462	1.6	284,179	291,722	2.7
Oct	31,876	31,740	-0.4	316,055	323,462	2.3
Nov	27,764	27,966	0.7	343,819	351,428	2.2
Dec	28,580			372,399		
Lowfat Cottage Cheese						
Jan	29,525	30,397	3.0	29,525	30,397	3.0
Feb	29,344	29,345		58,869	59,742	1.5
Mar	31,999	32,459	1.4	90,868	92,201	1.5
Apr	31,091	33,234	6.9	121,959	125,435	2.9
May	34,658	32,398	-6.5	156,617	157,833	0.8
Jun	29,266	31,767	8.5	185,883	189,600	2.0
Jul	34,105	33,036	-3.1	219,988	222,636	1.2
Aug	34,778	33,417	-3.9	254,766	256,053	0.5
Sep	31,505	31,629	0.4	286,271	287,682	0.5
Oct	32,349	32,950	1.9	318,620	320,632	0.6
Nov	27,292	28,920	6.0	345,912	349,552	1.1
Dec	28,384			374,296		
	<i>1,000 Gallons</i>	<i>1,000 Gallons</i>	<i>Percent</i>	<i>1,000 Gallons</i>	<i>1,000 Gallons</i>	<i>Percent</i>
Ice Cream, Hard						
Jan	69,696	67,337	-3.4	69,696	67,337	-3.4
Feb	69,293	70,615	1.9	138,989	137,952	-0.7
Mar	75,823	73,595	-2.9	214,812	211,547	-1.5
Apr	80,364	79,402	-1.2	295,176	290,949	-1.4
May	77,609	79,138	2.0	372,785	370,087	-0.7
Jun	80,779	83,405	3.3	453,564	453,492	
Jul	82,999	82,942	-0.1	536,563	536,434	
Aug	77,896	75,830	-2.7	614,459	612,264	-0.4
Sep	69,894	71,799	2.7	684,353	684,063	
Oct	70,501	68,751	-2.5	754,854	752,814	-0.3
Nov	57,374	58,131	1.3	812,228	810,945	-0.2
Dec	53,903			866,131		

See footnote(s) at end of table.

--continued

**Dairy Products: Production by Product and Month,
United States, 2002-2003 ¹ (continued)**

Product and Month	By Month			Cumulative		
	2002	2003	Change From 2002	2002	2003	Change From 2002
	<i>1,000 Gallons</i>	<i>1,000 Gallons</i>	<i>Percent</i>	<i>1,000 Gallons</i>	<i>1,000 Gallons</i>	<i>Percent</i>
Ice Cream, Lowfat						
Jan	23,520	25,274	7.5	23,520	25,274	7.5
Feb	25,096	25,853	3.0	48,616	51,127	5.2
Mar	30,861	35,416	14.8	79,477	86,543	8.9
Apr	34,564	37,557	8.7	114,041	124,100	8.8
May	37,863	40,445	6.8	151,904	164,545	8.3
Jun	37,347	42,666	14.2	189,251	207,211	9.5
Jul	36,211	42,117	16.3	225,462	249,328	10.6
Aug	34,033	38,545	13.3	259,495	287,873	10.9
Sep	28,540	32,377	13.4	288,035	320,250	11.2
Oct	27,696	30,584	10.4	315,731	350,834	11.1
Nov	22,428	24,735	10.3	338,159	375,569	11.1
Dec	23,428			361,587		
Ice Cream, NF, Hard						
Jan	1,665	1,584	-4.9	1,665	1,584	-4.9
Feb	1,350	1,689	25.1	3,015	3,273	8.6
Mar	1,858	1,580	-15.0	4,873	4,853	-0.4
Apr	1,693	1,908	12.7	6,566	6,761	3.0
May	1,566	1,875	19.7	8,132	8,636	6.2
Jun	1,483	1,935	30.5	9,615	10,571	9.9
Jul	1,546	1,935	25.2	11,161	12,506	12.1
Aug	1,534	1,535	0.1	12,695	14,041	10.6
Sep	1,423	1,553	9.1	14,118	15,594	10.5
Oct	1,572	1,690	7.5	15,690	17,284	10.2
Nov	1,451	1,470	1.3	17,141	18,754	9.4
Dec	1,250			18,391		
Sherbet, Hard						
Jan	3,731	4,056	8.7	3,731	4,056	8.7
Feb	3,904	4,406	12.9	7,635	8,462	10.8
Mar	4,775	5,011	4.9	12,410	13,473	8.6
Apr	5,047	5,438	7.7	17,457	18,911	8.3
May	5,250	5,319	1.3	22,707	24,230	6.7
Jun	5,225	5,835	11.7	27,932	30,065	7.6
Jul	5,478	5,345	-2.4	33,410	35,410	6.0
Aug	4,629	4,699	1.5	38,039	40,109	5.4
Sep	4,124	4,433	7.5	42,163	44,542	5.6
Oct	4,058	4,079	0.5	46,221	48,621	5.2
Nov	2,934	3,443	17.3	49,155	52,064	5.9
Dec	3,189			52,344		

See footnote(s) at end of table.

--continued

**Dairy Products: Production by Product and Month,
United States, 2002-2003 ¹ (continued)**

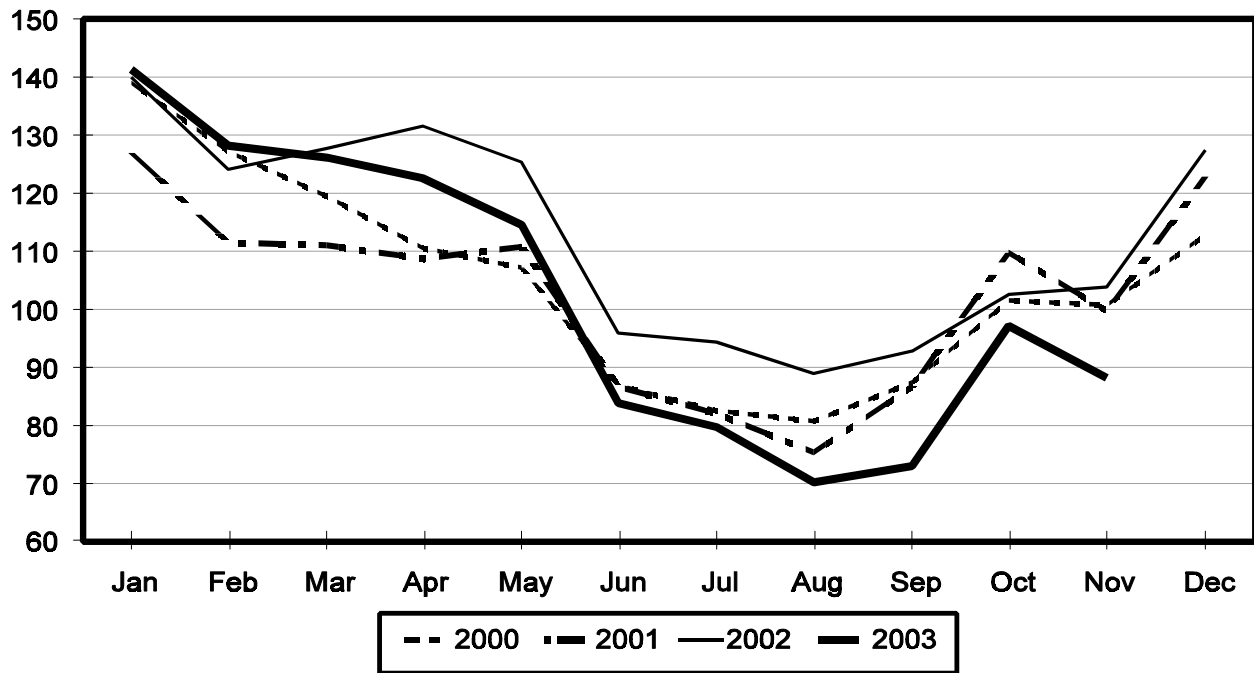
Product and Month	By Month			Cumulative		
	2002	2003	Change From 2002	2002	2003	Change From 2002
	<i>1,000 Gallons</i>	<i>1,000 Gallons</i>	<i>Percent</i>	<i>1,000 Gallons</i>	<i>1,000 Gallons</i>	<i>Percent</i>
Frozen Yogurt						
Jan	5,715	5,719	0.1	5,715	5,719	0.1
Feb	6,012	5,505	-8.4	11,727	11,224	-4.3
Mar	6,696	5,794	-13.5	18,423	17,018	-7.6
Apr	7,156	6,370	-11.0	25,579	23,388	-8.6
May	6,932	6,482	-6.5	32,511	29,870	-8.1
Jun	6,498	5,906	-9.1	39,009	35,776	-8.3
Jul	6,722	5,853	-12.9	45,731	41,629	-9.0
Aug	6,619	5,610	-15.2	52,350	47,239	-9.8
Sep	6,046	5,360	-11.3	58,396	52,599	-9.9
Oct	5,842	4,879	-16.5	64,238	57,478	-10.5
Nov	4,937	4,287	-13.2	69,175	61,765	-10.7
Dec	4,231			73,406		

¹ October 2003 data revised.

² Excludes all modified dry whey products.

Total Butter Production United States

Million Pounds



**Total Cheese, Excluding Cottage Cheese: Production by
State and United States, November 2002-2003**

State	Nov 2002	Oct ¹ 2003	Nov 2003	Change From	
				Nov 2002	Oct 2003
	<i>1,000 Pounds</i>	<i>1,000 Pounds</i>	<i>1,000 Pounds</i>	<i>Percent</i>	<i>Percent</i>
CA	145,734	155,121	150,992	3.6	-2.7
ID	54,825	60,076	62,890	14.7	4.7
IL	8,156	7,182	7,247	-11.1	0.9
IA	23,485	19,163	20,300	-13.6	5.9
MA	67	75	76	13.4	1.3
MN	47,549	47,817	46,066	-3.1	-3.7
MO	9,142	8,919	9,650	5.6	8.2
NY	67,556	66,065	63,666	-5.8	-3.6
OH	13,760	14,948	13,268	-3.6	-11.2
PA	29,973	30,310	29,691	-0.9	-2.0
SD	13,016	12,919	12,239	-6.0	-5.3
UT	4,598	6,609	6,522	41.8	-1.3
WA	13,102				
WI	184,724	196,900	183,161	-0.8	-7.0
Oth Sts ²	109,757	115,264	112,458	2.5	-2.4
US	725,444	741,368	718,226	-1.0	-3.1
N Atlantic	115,587	113,586	109,225	-5.5	-3.8
S Atlantic	2,913	3,174	2,910	-0.1	-8.3
E N Central	219,551	230,196	214,680	-2.2	-6.7
W N Central	102,170	91,115	91,276	-10.7	0.2
S Central	7,213	6,829	7,225	0.2	5.8
West	278,010	296,468	292,910	5.4	-1.2

¹ Revised.

² States not shown when fewer than 3 plants reported or individual plant operations could be disclosed. Percent change shown only when comparable States are included in the calculation.

American Cheese: Production by State and United States, November 2002-2003

State	Nov 2002	Oct ¹ 2003	Nov 2003	Change From	
				Nov 2002	Oct 2003
	<i>1,000 Pounds</i>	<i>1,000 Pounds</i>	<i>1,000 Pounds</i>	<i>Percent</i>	<i>Percent</i>
CA	66,384	65,195	66,829	0.7	2.5
ID	37,428	43,021	42,856	14.5	-0.4
IA	11,164	10,227	9,851	-11.8	-3.7
MN	46,445	45,843	43,597	-6.1	-4.9
NY	5,467	5,021	6,419	17.4	27.8
OH	2,494	2,625	2,382	-4.5	-9.3
OR	7,834	8,860	8,424	7.5	-4.9
SD	6,409	7,131	6,540	2.0	-8.3
WA	13,077				
WI	68,332	68,800	63,200	-7.5	-8.1
Oth Sts ²	29,329	47,774	43,447	48.1	-9.1
US	294,363	304,497	293,545	-0.3	-3.6
Atlantic	10,719	11,565	12,333	15.1	6.6
E N Central	72,044	72,800	66,464	-7.7	-8.7
W N Central	65,038	63,665	60,438	-7.1	-5.1
S Central	3,960	3,913	3,918	-1.1	0.1
West	142,602	152,554	150,392	5.5	-1.4

¹ Revised.

² States not shown when fewer than 3 plants reported or individual plant operations could be disclosed. Percent change shown only when comparable States are included in the calculation.

Cheddar Cheese: Production by State and United States, November 2002-2003

State	Nov 2002	Oct ¹ 2003	Nov 2003	Change From	
				Nov 2002	Oct 2003
	<i>1,000 Pounds</i>	<i>1,000 Pounds</i>	<i>1,000 Pounds</i>	<i>Percent</i>	<i>Percent</i>
CA	47,332	40,293	42,035	-11.2	4.3
ID	14,349	20,744	19,995	39.3	-3.6
MN	43,819	41,126	39,203	-10.5	-4.7
NY	5,348	4,885	6,268	17.2	28.3
SD	3,953	2,287	4,070	3.0	78.0
WA	10,947				
WI	53,734	53,300	48,700	-9.4	-8.6
Oth Sts ²	40,187	58,447	55,033	36.9	-5.8
US	219,669	221,082	215,304	-2.0	-2.6
Atlantic	10,076	10,936	11,953	18.6	9.3
E N Cen	55,622	55,603	50,581	-9.1	-9.0
W N Cen	54,338	50,728	50,346	-7.3	-0.8
S Cen	3,960	3,912	3,917	-1.1	0.1
West	95,673	99,903	98,507	3.0	-1.4

¹ Revised.

² States not shown when fewer than 3 plants reported or individual plant operations could be disclosed. Percent change shown only when comparable States are included in the calculation.

Mozzarella Cheese: Production by State and United States, November 2002-2003

State	Nov 2002	Oct ¹ 2003	Nov 2003	Change From	
				Nov 2002	Oct 2003
	<i>1,000 Pounds</i>	<i>1,000 Pounds</i>	<i>1,000 Pounds</i>	<i>Percent</i>	<i>Percent</i>
CA	61,962	68,837	67,502	8.9	-1.9
NY	16,601	17,487	16,384	-1.3	-6.3
PA	14,434	13,562	15,310	6.1	12.9
WI	59,926	65,600	61,200	2.1	-6.7
Oth Sts ²	81,860	68,191	72,392	-11.6	6.2
US	234,783	233,677	232,788	-0.8	-0.4
Atlantic ³	41,055	38,625	38,676	-5.8	0.1
E N Central	71,441	75,304	71,329	-0.2	-5.3
West	105,533	110,087	112,843	6.9	2.5

¹ Revised.

² States not shown when fewer than 3 plants reported or individual plant operations could be disclosed. Percent change shown only when comparable States are included in the calculation.

³ Region totals may not add to U.S. when compiled regions could not be disclosed.

Butter: Production by State and United States, November 2002-2003

State	Nov 2002	Oct ¹ 2003	Nov 2003	Change From	
				Nov 2002	Oct 2003
	<i>1,000 Pounds</i>	<i>1,000 Pounds</i>	<i>1,000 Pounds</i>	<i>Percent</i>	<i>Percent</i>
CA	28,794	30,483	30,590	6.2	0.4
NY	1,776	2,074	1,678	-5.5	-19.1
PA	6,062	4,293	3,916	-35.4	-8.8
WA	7,866				
WI	28,593	23,300	21,000	-26.6	-9.9
Oth Sts ²	30,841	36,890	30,936	0.3	-16.1
US	103,932	97,040	88,120	-15.2	-9.2
N Atlantic ³	10,412	9,846	7,296	-29.9	-25.9
E N Central	32,888	26,890	24,972	-24.1	-7.1
W N Central	7,857	6,644	7,678	-2.3	15.6
West	41,820	43,068	42,043	0.5	-2.4

¹ Revised.

² States not shown when fewer than 3 plants reported or individual plant operations could be disclosed. Percent change shown only when comparable States are included in the calculation.

³ Region totals may not add to U.S. when compiled regions could not be disclosed.

**Nonfat Dry Milk, Human: Production by State
and United States, November 2002-2003**

State	Nov 2002	Oct ¹ 2003	Nov 2003	Change From	
				Nov 2002	Oct 2003
	<i>1,000 Pounds</i>	<i>1,000 Pounds</i>	<i>1,000 Pounds</i>	<i>Percent</i>	<i>Percent</i>
CA	56,184	57,926	59,236	5.4	2.3
ID	4,796	4,276	4,010	-16.4	-6.2
WA	13,524				
Oth Sts ²	24,545	36,816	39,106	59.3	6.2
US	99,049	99,018	102,352	3.3	3.4
Atlantic	6,253	6,057	6,605	5.6	9.0
E N Central	2,481	3,818	2,590	4.4	-32.2
W N Central	4,689	3,160	5,924	26.3	87.5
S Central	3,530	2,326	2,399	-32.0	3.1
West	82,096	83,657	84,834	3.3	1.4

¹ Revised.

² States not shown when fewer than 3 plants reported or individual plant operations could be disclosed. Percent change shown only when comparable States are included in the calculation.

**Dry Whey, Human: Production by State
and United States, November 2002-2003**

State	Nov 2002	Oct ¹ 2003	Nov 2003	Change From	
				Nov 2002	Oct 2003
	<i>1,000 Pounds</i>	<i>1,000 Pounds</i>	<i>1,000 Pounds</i>	<i>Percent</i>	<i>Percent</i>
CA	13,280	10,357	9,763	-26.5	-5.7
MN	6,883	7,492	6,936	0.8	-7.4
NY	8,609	10,031	8,829	2.6	-12.0
PA	8,133	6,696	7,016	-13.7	4.8
WA	8,083				
WI	25,819	25,059	22,600	-12.5	-9.8
Oth Sts ²	15,146	23,205	21,766	43.7	-6.2
US	85,953	82,840	76,910	-10.5	-7.2
Atlantic	16,742	16,727	15,845	-5.4	-5.3
Central	43,782	42,810	39,437	-9.9	-7.9
West	25,429	23,303	21,628	-14.9	-7.2

¹ Revised.

² States not shown when fewer than 3 plants reported or individual plant operations could be disclosed. Percent change shown only when comparable States are included in the calculation.

Ice Cream, Hard: Production by State and United States, November 2002-2003

State	Nov 2002	Oct ¹ 2003	Nov 2003	Change From	
				Nov 2002	Oct 2003
	<i>1,000 Gallons</i>	<i>1,000 Gallons</i>	<i>1,000 Gallons</i>	<i>Percent</i>	<i>Percent</i>
CA	7,625	9,276	8,370	9.8	-9.8
FL	1,759	2,400	2,100	19.4	-12.5
IL	1,990	2,185	2,253	13.2	3.1
IN	5,340	6,163	5,806	8.7	-5.8
MD	978	1,667	843	-13.8	-49.4
MA	4,088	6,248	3,894	-4.7	-37.7
MI	1,183	1,454	883	-25.4	-39.3
MN	3,019	2,854	2,839	-6.0	-0.5
MO	1,192	1,627	982	-17.6	-39.6
NY	1,574	2,550	2,000	27.1	-21.6
NC	1,076	1,170	766	-28.8	-34.5
OH	2,073	2,204	1,661	-19.9	-24.6
OR	627	930	750	19.6	-19.4
PA	3,144	3,725	2,939	-6.5	-21.1
SD	2	3	2		-33.3
TN	1,300	1,291	1,061	-18.4	-17.8
TX	3,347	3,896	3,347		-14.1
UT	960	1,691	1,536	60.0	-9.2
WA	793	901	642	-19.0	-28.7
Oth Sts ²	15,304	16,516	15,457	1.0	-6.4
US	57,374	68,751	58,131	1.3	-15.4
N Atlantic	10,914	14,651	10,959	0.4	-25.2
S Atlantic	5,205	6,443	4,639	-10.9	-28.0
E N Central	11,220	12,843	11,175	-0.4	-13.0
W N Central	10,404	11,225	10,000	-3.9	-10.9
S Central	7,276	8,552	7,175	-1.4	-16.1
West	12,355	15,037	14,183	14.8	-5.7

¹ Revised.

² States not shown when fewer than 3 plants reported or individual plant operations could be disclosed. Percent change shown only when comparable States are included in the calculation.

**Canned Milk and Dry Milk Products: Manufacturers' Shipments,
Stocks, and Selling Prices, November, 2002-2003**

Product	Nov 2002	Oct 2003 ¹	Nov 2003	Change From	
				Nov 2002	Oct 2003
	Manufacturers' Shipments ²				
	<i>1,000 Pounds</i>	<i>1,000 Pounds</i>	<i>1,000 Pounds</i>	<i>Percent</i>	<i>Percent</i>
Nonfat Dry Milk, Human ³	87,522	91,619	91,454	4.5	-0.2
	Manufacturers' Stocks End-of-Month ⁴				
	<i>1,000 Pounds</i>	<i>1,000 Pounds</i>	<i>1,000 Pounds</i>	<i>Percent</i>	<i>Percent</i>
Canned Evaporated and Condensed Whole Milk	54,691	54,104	40,699	-25.6	-24.8
Nonfat Dry Milk, Human	73,912	69,365	74,127	0.3	6.9
Dry Buttermilk, Total ⁵	5,766	2,145	2,348	-59.3	9.5

¹ Revised.

² For dry products, shipments of bulk goods only.

³ Preliminary revisions for Manufacturer's Shipments and Stocks End-of-Month for Nonfat Dry Milk, Human, for 2002 and 2003 can be found in the table below.

⁴ Stocks held by manufacturers at all points and in transit.

⁵ Preliminary revisions for Stocks End-of-Month for Dry Buttermilk, Total, for 2002 and 2003 can be found in the table below.

**Preliminary Revisions: Nonfat Dry Milk, Human
2002-2003**

Month	Manufacturer's Shipments		Stocks	
	2002	2003	2002	2003
	<i>1,000 Pounds</i>	<i>1,000 Pounds</i>	<i>1,000 Pounds</i>	<i>1,000 Pounds</i>
Jan	133,335	119,849	101,116	99,593
Feb	112,323	107,906	126,759	104,460
Mar	129,756	126,071	139,682	122,376
Apr	154,477	141,728	140,830	128,840
May	162,830	142,414	142,938	128,322
Jun	149,937	133,564	147,811	123,163
Jul	146,262	145,280	126,070	89,508
Aug	148,557	104,571	94,471	75,266
Sep	117,283	98,118	71,655	69,222
Oct	100,684	91,619	69,340	69,365
Nov	87,522	91,454	73,912	74,127
Dec	104,962		90,501	

**Preliminary Revisions: Dry Buttermilk, Total
2002-2003**

Month	Stocks	
	2002	2003
	<i>1,000 Pounds</i>	<i>1,000 Pounds</i>
Jan	7,835	9,226
Feb	8,035	9,027
Mar	8,506	10,015
Apr	11,344	11,156
May	12,020	9,469
Jun	11,726	7,043
Jul	10,926	2,521
Aug	8,332	2,335
Sep	6,916	2,269
Oct	4,648	2,145
Nov	5,766	2,348
Dec	7,451	

Procedures and Reliability: Estimates included in this report are based on data provided each month by manufacturers of these products. In 32 States, the State Departments of Agriculture assist in collection of data, which eliminates duplicate reporting and reduces respondent burden. Data are collected by mail, personal and telephone interviews following the close of each month. There were 1,153 manufacturers that made one or more products in 2002. Each month, reports are generally received from all dairy plants in States with small numbers of plants. In States with large numbers of plants, survey procedures are designed to obtain monthly reports from all large plants and from a sample of small plants. Monthly estimates are based upon returns from about 70 percent of the plants which account for 70 to 90 percent of the total production of major dairy products.

Revision Policy: Monthly estimates are subject to revision the month following the preliminary estimates. Annual estimates are published in the "**Dairy Products**" report published each April which includes any revisions made to current and previous year. An attempt is made to get information from all plants for preparing these estimates.

The next "*Dairy Products*" report will be released at 3 p.m. ET on February 4, 2004.

The United States Department of Agriculture (USDA) prohibits discrimination in all its programs on the basis of race, color, national origin, gender, religion, age, disability, political beliefs, sexual orientation, and marital or family status. (Not all prohibited bases apply to all programs.) Persons with disabilities who require alternative means for communication of program information (braille, large print, audiotape, etc.) should contact the USDA's TARGET Center at 202-720-2600 (voice and TDD).

To file a complaint of discrimination, write USDA, Director, Office of Civil Rights, Room 326-W, Whitten Building, 1400 Independence Avenue, SW, Washington, D.C., 20250-9410, or call 202-720-5964 (voice or TDD). USDA is an equal opportunity provider and employer.

ACCESS TO REPORTS!!

For your convenience, there are several ways to obtain NASS reports, data products, and services:

INTERNET ACCESS

All NASS reports are available free of charge on the worldwide Internet. For access, connect to the Internet and go to the NASS Home Page at: <http://www.usda.gov/nass/>. Select "Today's Reports" or Publications and then Reports Calendar or Publications and then Search, by Title or Subject.

E-MAIL SUBSCRIPTION

All NASS reports are available by subscription free of charge direct to your e-mail address. Starting with the NASS Home Page at <http://www.usda.gov/nass/>, click on **Publications**, then click on the **Subscribe by E-mail** button which takes you to the page describing e-mail delivery of reports. Finally, click on **Go to the Subscription Page** and follow the instructions.

PRINTED REPORTS OR DATA PRODUCTS

CALL OUR TOLL-FREE ORDER DESK: 800-999-6779 (U.S. and Canada)
Other areas, please call 703-605-6220 FAX: 703-605-6900
(Visa, MasterCard, check, or money order acceptable for payment.)

ASSISTANCE

For **assistance** with general agricultural statistics or further information about NASS or its products or services, contact the **Agricultural Statistics Hotline** at **800-727-9540**, 7:30 a.m. to 4:00 p.m. ET, or e-mail: nass@nass.usda.gov.
