

Released February 4, 2004, by the National Agricultural Statistics Service (NASS), Agricultural Statistics Board, U.S. Department of Agriculture. For information on "Dairy Products" call Kevin Pautler at (202) 720-9168, office hours 7:30 a.m. to 4:00 p.m. ET.

December 2003 Highlights

Total cheese output (excluding cottage cheese) was 753 million pounds, 0.8 percent above December 2002 and 6.0 percent above November 2003.

American type cheese production totaled 319 million pounds, 0.4 percent above December 2002 and 8.8 percent above November 2003.

Butter production was 114 million pounds in December, 10.4 percent below December 2002 but 30.0 percent above November 2003.

Frozen dessert: (comparisons with December 2002)

Ice cream, Regular (hard) --- 54.4 million gallons, up 0.9 percent.

Ice cream, Lowfat (total) --- 26.4 million gallons, up 12.5 percent.

Ice cream, Nonfat (hard) --- 1.30 million gallons, up 3.8 percent.

Sherbet (hard) --- 3.33 million gallons, up 4.5 percent.

Frozen Yogurt (total) --- 4.04 million gallons, down 4.5 percent.

Nonfat dry milk for human food: (compared with December 2002) --- 132 million pounds, down slightly.

Dry whey products: (comparisons with December 2002)

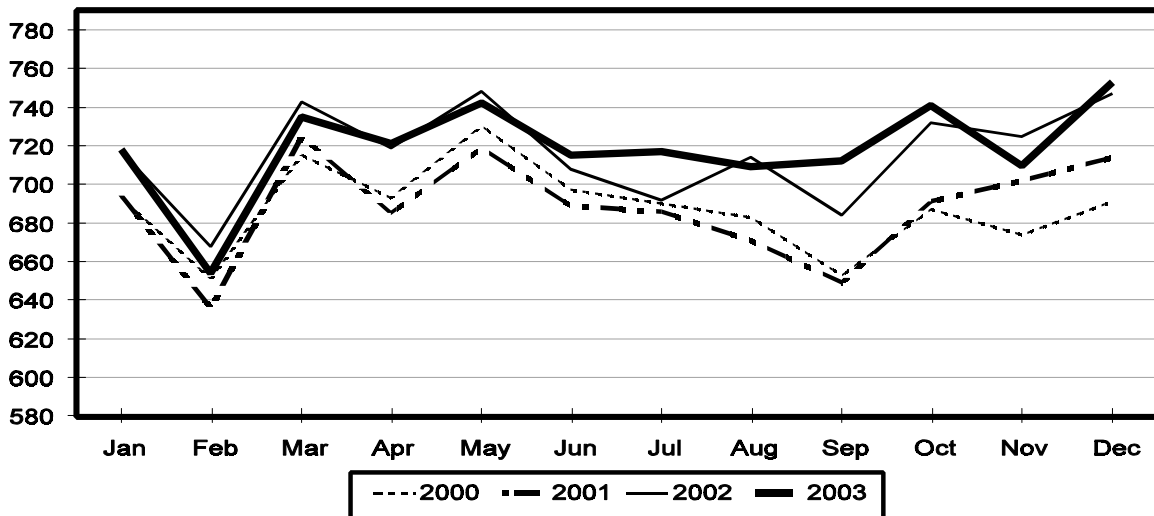
Dry whey, human --- 79.9 million pounds, down 13.2 percent.

Dry whey, animal --- 8.77 million pounds, up 41.9 percent.

Dry whey, total --- 88.7 million pounds, down 9.8 percent.

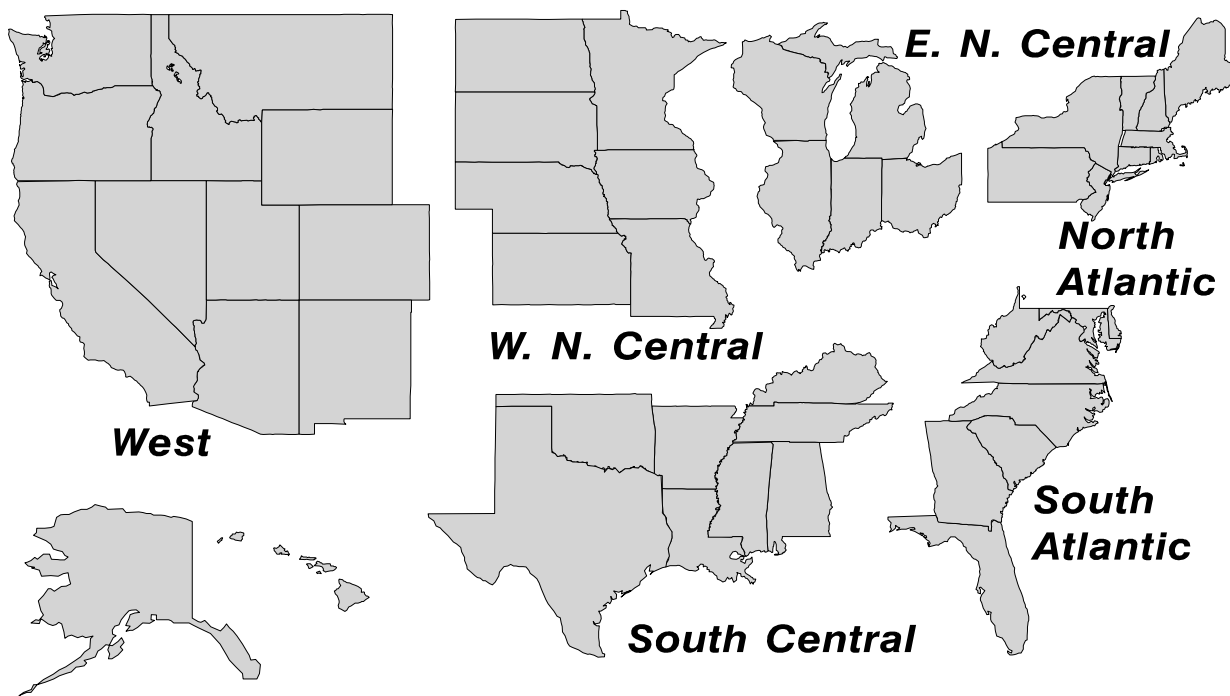
Total Cheese Production United States

Million Pounds



U. S. Geographic Regions Dairy Products

State totals are not published when fewer than 3 firms have reported or one firm comprises more than 60 percent of the State total. If we are not able to publish a region for confidentiality reasons, it will be combined with other regions when possible. For example, if North Atlantic can not be published, then it will be combined with South Atlantic to publish Atlantic. The West North Central and East North Central will be combined, if necessary, to form North Central. In the event that neither could be published, they may be combined with South Central to publish Central. Some tables will have only limited regions shown, therefore the regions may not add to the United States total.



**Dairy Products: Production by Product,
United States, December, 2002-2003**

Product	Dec 2002	Nov 2003 ¹	Dec 2003	Change From	
				Dec 2002	Nov 2003
	<i>1,000 Pounds</i>	<i>1,000 Pounds</i>	<i>1,000 Pounds</i>	<i>Percent</i>	<i>Percent</i>
Butter	127,591	87,976	114,370	-10.4	30.0
Cheese					
American Types ²	317,426	293,171	318,837	0.4	8.8
Cheddar	240,203	215,013	239,565	-0.3	11.4
Swiss	22,826	22,286	23,617	3.5	6.0
Brick and Muenster	7,613	7,226	7,219	-5.2	-0.1
Cream and Neufchatel	60,652	70,924	59,189	-2.4	-16.5
Hispanic	10,078	9,979	10,857	7.7	8.8
Mozzarella	248,601	229,590	248,145	-0.2	8.1
Other Italian Types	63,060	58,796	64,227	1.9	9.2
Total Italian Types	311,661	288,386	312,372	0.2	8.3
All Other Types	16,905	18,406	21,043	24.5	14.3
Total	747,161	710,378	753,134	0.8	6.0
Cottage Cheese, Curd ³	33,199	35,610	34,208	3.0	-3.9
Cottage Cheese, Cream ⁴	28,580	27,933	28,836	0.9	3.2
Cottage Cheese, Lowfat ⁵	28,384	29,202	28,544	0.6	-2.3
Canned Evaporated and Condensed Whole Milk	36,607	46,702	42,320	15.6	-9.4
Dry Whole Milk	3,879	4,831	2,608	-32.8	-46.0
Nonfat Dry Milk, Human	132,494	103,434	132,214	-0.2	27.8
Dry Skim Milk, Animal	416	327	348	-16.3	6.4
Dry Buttermilk	5,013	3,341	5,044	0.6	51.0
Sour Cream ⁶		88,137	93,014		5.5
Yogurt, Plain & Flavored	164,219	174,375	178,881	8.9	2.6
	<i>1,000 Gallons</i>	<i>1,000 Gallons</i>	<i>1,000 Gallons</i>	<i>Percent</i>	<i>Percent</i>
Frozen Products					
Ice Cream, Hard	53,903	57,908	54,362	0.9	-6.1
Ice Cream, Lowfat, Hard	6,780	6,320	6,898	1.7	9.1
Ice Cream, Lowfat, Soft	16,648	18,386	19,469	16.9	5.9
Ice Cream, Lowfat, Total	23,428	24,706	26,367	12.5	6.7
Ice Cream, Nonfat, Hard	1,250	1,439	1,297	3.8	-9.9
Sherbet, Hard	3,189	3,407	3,332	4.5	-2.2
Water and Juice Ices	3,230	3,322	2,884	-10.7	-13.2
Frozen Yogurt, Total	4,231	4,231	4,039	-4.5	-4.5
Regular & Lowfat, Hard	1,308	1,458	1,226	-6.3	-15.9
Nonfat, Hard	786	811	744	-5.3	-8.3
Other Frozen Dairy Products	523	439	592	13.2	34.9
Mix for Frozen Products					
Ice Cream Mix	36,956	33,229	32,244	-12.8	-3.0
Ice Cream, Lowfat, Mix	13,694	13,714	14,630	6.8	6.7
Ice Cream, Nonfat, Mix	802	999	953	18.8	-4.6
Sherbet Mix	2,342	2,306	2,410	2.9	4.5
Yogurt Mix	2,646	2,489	2,376	-10.2	-4.5

¹ Revised.

² Includes Cheddar, Colby, Monterey, and Jack.

³ Mostly used for processing into cream or lowfat cottage cheese.

⁴ Fat content 4 percent or more.

⁵ Fat content less than 4 percent.

⁶ Corrected totals due to errors in reporting unit: January 76,716; February 64,282; and March 75,689 million pounds.

**Whey and Modified Whey Products: Production, Stocks,
and Prices, United States, December, 2002-2003**

Product	Dec 2002	Nov 2003 ¹	Dec 2003	Change From	
				Dec 2002	Nov 2003
Production					
	<i>1,000 Pounds</i>	<i>1,000 Pounds</i>	<i>1,000 Pounds</i>	<i>Percent</i>	<i>Percent</i>
Condensed Whey, Solids Content ²					
Sweet-Type, Human	9,035	9,015	9,845	9.0	9.2
Sweet-Type, Animal ³					
Dry Whey Products					
Dry Whey, Human	92,088	73,914	79,906	-13.2	8.1
Dry Whey, Animal	6,180	7,096	8,767	41.9	23.5
Dry Whey, Total	98,268	81,010	88,673	-9.8	9.5
Reduced Lactose and Minerals					
Human Food	3,981	3,160	4,367	9.7	38.2
Animal Feed	3,551	3,427	3,453	-2.8	0.8
Lactose, Human and Animal	48,902	52,979	55,394	13.3	4.6
Whey					
Solids in Wet Blends, Animal ³	2,844	3,751	4,087	43.7	9.0
Protein Concentrate, Human ⁷	24,886	21,174	24,361	-2.1	15.1
Protein Concentrate, Animal ⁷	3,300	3,914	3,808	15.4	-2.7
Manufacturers' Stocks End-of-Month ⁴					
	<i>1,000 Pounds</i>	<i>1,000 Pounds</i>	<i>1,000 Pounds</i>	<i>Percent</i>	<i>Percent</i>
Dry Whey Products					
Dry Whey, Human	47,012	37,582	38,767	-17.5	3.2
Dry Whey, Animal	2,380	4,442	5,262	121.1	18.5
Reduced Lactose and Minerals					
Human and Animal ⁵	10,079	7,917	7,278	-27.8	-8.1
Lactose, Human and Animal	45,512	44,609	50,055	10.0	12.2
Whey Protein Concentrate, Human ⁷	23,195	22,259	24,075	3.8	8.2
Whey Protein Concentrate, Animal ⁷	1,445	2,676	2,162	49.6	-19.2
Manufacturers' Selling Price ⁶					
	<i>Cents per Pound</i>	<i>Cents per Pound</i>	<i>Cents per Pound</i>	<i>Cents Change</i>	<i>Cents Change</i>
Dry Whey, Animal	16.7	19.0	19.0	2.3	

¹ Revised.

² Final marketable product only. Does not include quantity used or shipped to another plant for further processing into dry whey or modified whey products.

³ Not shown when fewer than three plants reported or individual plant operations could be disclosed.

⁴ Stocks held by manufacturers at all points and in transit.

⁵ Reduced lactose and minerals stocks combined to avoid disclosure of individual operations.

⁶ Prices for bulk goods, f.o.b. plant. Average monthly prices reported by firms.

⁷ Whey Protein Concentrate, 25.0 to 89.9 percent.

**Dairy Products: Production by Product and Month,
United States, 2002-2003 ¹**

Product and Month	By Month			Cumulative		
	2002	2003	Change From 2002	2002	2003	Change From 2002
	<i>1,000 Pounds</i>	<i>1,000 Pounds</i>	<i>Percent</i>	<i>1,000 Pounds</i>	<i>1,000 Pounds</i>	<i>Percent</i>
Total Cheese ³						
Jan	717,454	717,763		717,454	717,763	
Feb	667,887	653,516	-2.2	1,385,341	1,371,279	-1.0
Mar	742,764	735,370	-1.0	2,128,105	2,106,649	-1.0
Apr	719,231	721,438	0.3	2,847,336	2,828,087	-0.7
May	748,263	742,179	-0.8	3,595,599	3,570,266	-0.7
Jun	708,284	714,533	0.9	4,303,883	4,284,799	-0.4
Jul	692,195	717,211	3.6	4,996,078	5,002,010	0.1
Aug	714,314	709,043	-0.7	5,710,392	5,711,053	
Sep	683,895	712,108	4.1	6,394,287	6,423,161	0.5
Oct	732,157	741,368	1.3	7,126,444	7,164,529	0.5
Nov	725,444	710,378	-2.1	7,851,888	7,874,907	0.3
Dec	747,161	753,134	0.8	8,599,049	8,628,041	0.3
American Cheese						
Jan	317,538	319,517	0.6	317,538	319,517	0.6
Feb	292,857	285,649	-2.5	610,395	605,166	-0.9
Mar	322,054	318,491	-1.1	932,449	923,657	-0.9
Apr	320,432	308,599	-3.7	1,252,881	1,232,256	-1.6
May	329,921	320,185	-3.0	1,582,802	1,552,441	-1.9
Jun	313,998	307,233	-2.2	1,896,800	1,859,674	-2.0
Jul	305,409	306,545	0.4	2,202,209	2,166,219	-1.6
Aug	309,640	302,139	-2.4	2,511,849	2,468,358	-1.7
Sep	287,537	290,065	0.9	2,799,386	2,758,423	-1.5
Oct	297,840	304,497	2.2	3,097,226	3,062,920	-1.1
Nov	294,363	293,171	-0.4	3,391,589	3,356,091	-1.0
Dec	317,426	318,837	0.4	3,709,015	3,674,928	-0.9
Cheddar Cheese						
Jan	246,385	247,786	0.6	246,385	247,786	0.6
Feb	227,721	218,823	-3.9	474,106	466,609	-1.6
Mar	253,112	242,232	-4.3	727,218	708,841	-2.5
Apr	253,909	234,713	-7.6	981,127	943,554	-3.8
May	258,360	240,929	-6.7	1,239,487	1,184,483	-4.4
Jun	243,222	231,985	-4.6	1,482,709	1,416,468	-4.5
Jul	232,613	231,588	-0.4	1,715,322	1,648,056	-3.9
Aug	231,669	227,936	-1.6	1,946,991	1,875,992	-3.6
Sep	214,095	214,132		2,161,086	2,090,124	-3.3
Oct	219,119	221,082	0.9	2,380,205	2,311,206	-2.9
Nov	219,669	215,013	-2.1	2,599,874	2,526,219	-2.8
Dec	240,203	239,565	-0.3	2,840,077	2,765,784	-2.6

See footnote(s) at end of table.

--continued

**Dairy Products: Production by Product and Month,
United States, 2002-2003 ¹ (continued)**

Product and Month	By Month			Cumulative		
	2002	2003	Change From 2002	2002	2003	Change From 2002
	<i>1,000 Pounds</i>	<i>1,000 Pounds</i>	<i>Percent</i>	<i>1,000 Pounds</i>	<i>1,000 Pounds</i>	<i>Percent</i>
Italian Cheese ³						
Jan	296,654	293,345	-1.1	296,654	293,345	-1.1
Feb	278,013	272,616	-1.9	574,667	565,961	-1.5
Mar	307,324	305,440	-0.6	881,991	871,401	-1.2
Apr	289,919	303,372	4.6	1,171,910	1,174,773	0.2
May	305,072	307,923	0.9	1,476,982	1,482,696	0.4
Jun	280,388	293,488	4.7	1,757,370	1,776,184	1.1
Jul	275,506	292,661	6.2	2,032,876	2,068,845	1.8
Aug	285,840	291,828	2.1	2,318,716	2,360,673	1.8
Sep	277,883	290,995	4.7	2,596,599	2,651,668	2.1
Oct	300,818	298,592	-0.7	2,897,417	2,950,260	1.8
Nov	297,400	288,386	-3.0	3,194,817	3,238,646	1.4
Dec	311,661	312,372	0.2	3,506,478	3,551,018	1.3
Mozzarella						
Jan	236,958	232,355	-1.9	236,958	232,355	-1.9
Feb	223,384	218,084	-2.4	460,342	450,439	-2.2
Mar	246,569	243,230	-1.4	706,911	693,669	-1.9
Apr	231,324	242,905	5.0	938,235	936,574	-0.2
May	247,659	252,404	1.9	1,185,894	1,188,978	0.3
Jun	228,778	237,956	4.0	1,414,672	1,426,934	0.9
Jul	222,293	235,700	6.0	1,636,965	1,662,634	1.6
Aug	229,911	235,603	2.5	1,866,876	1,898,237	1.7
Sep	226,158	229,124	1.3	2,093,034	2,127,361	1.6
Oct	237,294	233,677	-1.5	2,330,328	2,361,038	1.3
Nov	234,783	229,590	-2.2	2,565,111	2,590,628	1.0
Dec	248,601	248,145	-0.2	2,813,712	2,838,773	0.9
Other Italian						
Jan	59,696	60,990	2.2	59,696	60,990	2.2
Feb	54,629	54,532	-0.2	114,325	115,522	1.0
Mar	60,755	62,210	2.4	175,080	177,732	1.5
Apr	58,595	60,467	3.2	233,675	238,199	1.9
May	57,413	55,519	-3.3	291,088	293,718	0.9
Jun	51,610	55,532	7.6	342,698	349,250	1.9
Jul	53,213	56,961	7.0	395,911	406,211	2.6
Aug	55,929	56,225	0.5	451,840	462,436	2.3
Sep	51,725	61,871	19.6	503,565	524,307	4.1
Oct	63,524	64,915	2.2	567,089	589,222	3.9
Nov	62,617	58,796	-6.1	629,706	648,018	2.9
Dec	63,060	64,227	1.9	692,766	712,245	2.8

See footnote(s) at end of table.

--continued

**Dairy Products: Production by Product and Month,
United States, 2002-2003 ¹ (continued)**

Product and Month	By Month			Cumulative		
	2002	2003	Change From 2002	2002	2003	Change From 2002
	<i>1,000 Pounds</i>	<i>1,000 Pounds</i>	<i>Percent</i>	<i>1,000 Pounds</i>	<i>1,000 Pounds</i>	<i>Percent</i>
Butter						
Jan	140,069	141,440	1.0	140,069	141,440	1.0
Feb	124,231	128,362	3.3	264,300	269,802	2.1
Mar	127,695	126,338	-1.1	391,995	396,140	1.1
Apr	131,605	122,715	-6.8	523,600	518,855	-0.9
May	125,484	114,678	-8.6	649,084	633,533	-2.4
Jun	95,818	83,836	-12.5	744,902	717,369	-3.7
Jul	94,409	79,546	-15.7	839,311	796,915	-5.1
Aug	88,883	70,144	-21.1	928,194	867,059	-6.6
Sep	92,818	73,091	-21.3	1,021,012	940,150	-7.9
Oct	102,613	97,040	-5.4	1,123,625	1,037,190	-7.7
Nov	103,932	87,976	-15.4	1,227,557	1,125,166	-8.3
Dec	127,591	114,370	-10.4	1,355,148	1,239,536	-8.5
Nonfat Dry Milk, Human						
Jan	128,675	133,758	4.0	128,675	133,758	4.0
Feb	127,707	130,355	2.1	256,382	264,113	3.0
Mar	153,057	146,276	-4.4	409,439	410,389	0.2
Apr	164,159	150,404	-8.4	573,598	560,793	-2.2
May	163,379	154,168	-5.6	736,977	714,961	-3.0
Jun	152,982	130,791	-14.5	889,959	845,752	-5.0
Jul	129,071	121,976	-5.5	1,019,030	967,728	-5.0
Aug	117,870	100,673	-14.6	1,136,900	1,068,401	-6.0
Sep	97,191	88,498	-8.9	1,234,091	1,156,899	-6.3
Oct	103,357	99,018	-4.2	1,337,448	1,255,917	-6.1
Nov	99,049	103,434	4.4	1,436,497	1,359,351	-5.4
Dec	132,494	132,214	-0.2	1,568,991	1,491,565	-4.9
Total Dry Whey ²						
Jan	90,071	97,664	8.4	90,071	97,664	8.4
Feb	84,430	88,712	5.1	174,501	186,376	6.8
Mar	96,405	101,088	4.9	270,906	287,464	6.1
Apr	93,868	95,034	1.2	364,774	382,498	4.9
May	98,417	100,893	2.5	463,191	483,391	4.4
Jun	93,720	95,163	1.5	556,911	578,554	3.9
Jul	92,358	96,848	4.9	649,269	675,402	4.0
Aug	93,820	90,569	-3.5	743,089	765,971	3.1
Sep	89,639	87,450	-2.4	832,728	853,421	2.5
Oct	93,177	88,707	-4.8	925,905	942,128	1.8
Nov	91,599	81,010	-11.6	1,017,504	1,023,138	0.6
Dec	98,268	88,673	-9.8	1,115,772	1,111,811	-0.4

See footnote(s) at end of table.

--continued

**Dairy Products: Production by Product and Month,
United States, 2002-2003 ¹ (continued)**

Product and Month	By Month			Cumulative		
	2002	2003	Change From 2002	2002	2003	Change From 2002
	<i>1,000 Pounds</i>	<i>1,000 Pounds</i>	<i>Percent</i>	<i>1,000 Pounds</i>	<i>1,000 Pounds</i>	<i>Percent</i>
Cream Cottage Cheese						
Jan	30,045	31,386	4.5	30,045	31,386	4.5
Feb	29,034	29,155	0.4	59,079	60,541	2.5
Mar	31,607	31,991	1.2	90,686	92,532	2.0
Apr	31,454	33,949	7.9	122,140	126,481	3.6
May	32,966	32,767	-0.6	155,106	159,248	2.7
Jun	30,787	32,392	5.2	185,893	191,640	3.1
Jul	32,588	34,497	5.9	218,481	226,137	3.5
Aug	33,753	33,123	-1.9	252,234	259,260	2.8
Sep	31,945	32,462	1.6	284,179	291,722	2.7
Oct	31,876	31,740	-0.4	316,055	323,462	2.3
Nov	27,764	27,933	0.6	343,819	351,395	2.2
Dec	28,580	28,836	0.9	372,399	380,231	2.1
Lowfat Cottage Cheese						
Jan	29,525	30,397	3.0	29,525	30,397	3.0
Feb	29,344	29,345		58,869	59,742	1.5
Mar	31,999	32,459	1.4	90,868	92,201	1.5
Apr	31,091	33,234	6.9	121,959	125,435	2.9
May	34,658	32,398	-6.5	156,617	157,833	0.8
Jun	29,266	31,767	8.5	185,883	189,600	2.0
Jul	34,105	33,036	-3.1	219,988	222,636	1.2
Aug	34,778	33,417	-3.9	254,766	256,053	0.5
Sep	31,505	31,629	0.4	286,271	287,682	0.5
Oct	32,349	32,950	1.9	318,620	320,632	0.6
Nov	27,292	29,202	7.0	345,912	349,834	1.1
Dec	28,384	28,544	0.6	374,296	378,378	1.1
	<i>1,000 Gallons</i>	<i>1,000 Gallons</i>	<i>Percent</i>	<i>1,000 Gallons</i>	<i>1,000 Gallons</i>	<i>Percent</i>
Ice Cream, Hard						
Jan	69,696	67,337	-3.4	69,696	67,337	-3.4
Feb	69,293	70,615	1.9	138,989	137,952	-0.7
Mar	75,823	73,595	-2.9	214,812	211,547	-1.5
Apr	80,364	79,402	-1.2	295,176	290,949	-1.4
May	77,609	79,138	2.0	372,785	370,087	-0.7
Jun	80,779	83,405	3.3	453,564	453,492	
Jul	82,999	82,942	-0.1	536,563	536,434	
Aug	77,896	75,830	-2.7	614,459	612,264	-0.4
Sep	69,894	71,799	2.7	684,353	684,063	
Oct	70,501	68,751	-2.5	754,854	752,814	-0.3
Nov	57,374	57,908	0.9	812,228	810,722	-0.2
Dec	53,903	54,362	0.9	866,131	865,084	-0.1

See footnote(s) at end of table.

--continued

**Dairy Products: Production by Product and Month,
United States, 2002-2003 ¹ (continued)**

Product and Month	By Month			Cumulative		
	2002	2003	Change From 2002	2002	2003	Change From 2002
	<i>1,000 Gallons</i>	<i>1,000 Gallons</i>	<i>Percent</i>	<i>1,000 Gallons</i>	<i>1,000 Gallons</i>	<i>Percent</i>
Ice Cream, Lowfat						
Jan	23,520	25,274	7.5	23,520	25,274	7.5
Feb	25,096	25,853	3.0	48,616	51,127	5.2
Mar	30,861	35,416	14.8	79,477	86,543	8.9
Apr	34,564	37,557	8.7	114,041	124,100	8.8
May	37,863	40,445	6.8	151,904	164,545	8.3
Jun	37,347	42,666	14.2	189,251	207,211	9.5
Jul	36,211	42,117	16.3	225,462	249,328	10.6
Aug	34,033	38,545	13.3	259,495	287,873	10.9
Sep	28,540	32,377	13.4	288,035	320,250	11.2
Oct	27,696	30,584	10.4	315,731	350,834	11.1
Nov	22,428	24,706	10.2	338,159	375,540	11.1
Dec	23,428	26,367	12.5	361,587	401,907	11.2
Ice Cream, NF, Hard						
Jan	1,665	1,584	-4.9	1,665	1,584	-4.9
Feb	1,350	1,689	25.1	3,015	3,273	8.6
Mar	1,858	1,580	-15.0	4,873	4,853	-0.4
Apr	1,693	1,908	12.7	6,566	6,761	3.0
May	1,566	1,875	19.7	8,132	8,636	6.2
Jun	1,483	1,935	30.5	9,615	10,571	9.9
Jul	1,546	1,935	25.2	11,161	12,506	12.1
Aug	1,534	1,535	0.1	12,695	14,041	10.6
Sep	1,423	1,553	9.1	14,118	15,594	10.5
Oct	1,572	1,690	7.5	15,690	17,284	10.2
Nov	1,451	1,439	-0.8	17,141	18,723	9.2
Dec	1,250	1,297	3.8	18,391	20,020	8.9
Sherbet, Hard						
Jan	3,731	4,056	8.7	3,731	4,056	8.7
Feb	3,904	4,406	12.9	7,635	8,462	10.8
Mar	4,775	5,011	4.9	12,410	13,473	8.6
Apr	5,047	5,438	7.7	17,457	18,911	8.3
May	5,250	5,319	1.3	22,707	24,230	6.7
Jun	5,225	5,835	11.7	27,932	30,065	7.6
Jul	5,478	5,345	-2.4	33,410	35,410	6.0
Aug	4,629	4,699	1.5	38,039	40,109	5.4
Sep	4,124	4,433	7.5	42,163	44,542	5.6
Oct	4,058	4,079	0.5	46,221	48,621	5.2
Nov	2,934	3,407	16.1	49,155	52,028	5.8
Dec	3,189	3,332	4.5	52,344	55,360	5.8

See footnote(s) at end of table.

--continued

**Dairy Products: Production by Product and Month,
United States, 2002-2003 ¹ (continued)**

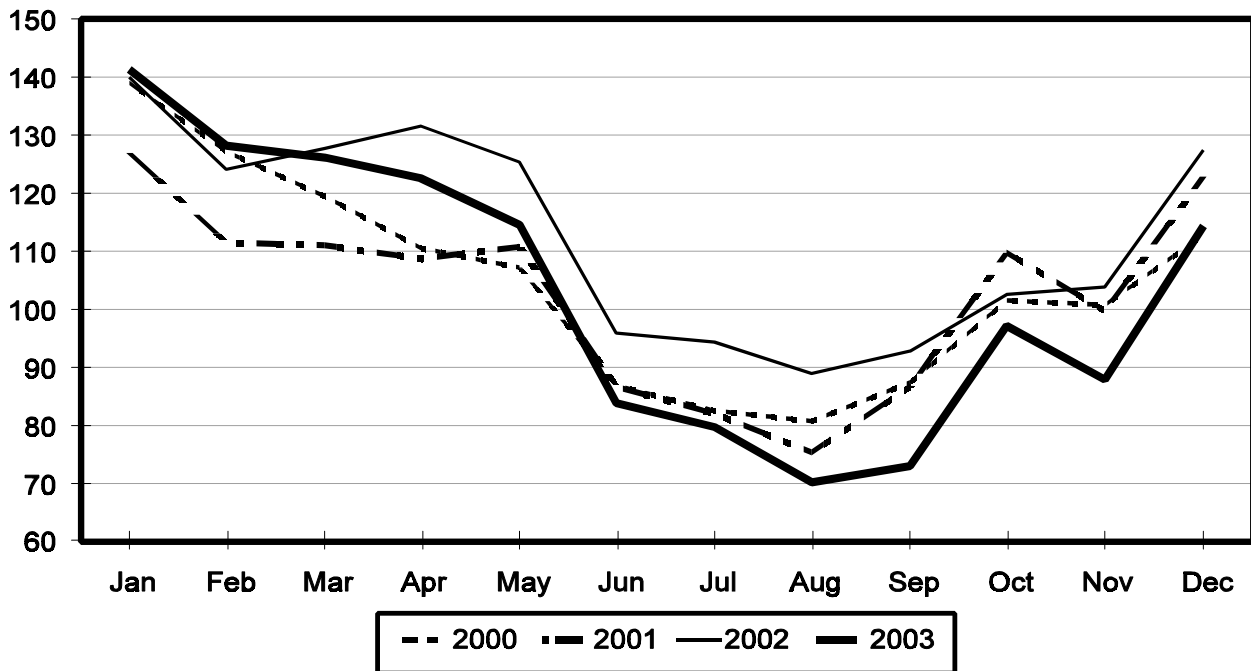
Product and Month	By Month			Cumulative		
	2002	2003	Change From 2002	2002	2003	Change From 2002
	<i>1,000 Gallons</i>	<i>1,000 Gallons</i>	<i>Percent</i>	<i>1,000 Gallons</i>	<i>1,000 Gallons</i>	<i>Percent</i>
Frozen Yogurt						
Jan	5,715	5,719	0.1	5,715	5,719	0.1
Feb	6,012	5,505	-8.4	11,727	11,224	-4.3
Mar	6,696	5,794	-13.5	18,423	17,018	-7.6
Apr	7,156	6,370	-11.0	25,579	23,388	-8.6
May	6,932	6,482	-6.5	32,511	29,870	-8.1
Jun	6,498	5,906	-9.1	39,009	35,776	-8.3
Jul	6,722	5,853	-12.9	45,731	41,629	-9.0
Aug	6,619	5,610	-15.2	52,350	47,239	-9.8
Sep	6,046	5,360	-11.3	58,396	52,599	-9.9
Oct	5,842	4,879	-16.5	64,238	57,478	-10.5
Nov	4,937	4,231	-14.3	69,175	61,709	-10.8
Dec	4,231	4,039	-4.5	73,406	65,748	-10.4

¹ November 2003 data revised.

² Excludes all modified dry whey products.

Total Butter Production United States

Million Pounds



**Total Cheese, Excluding Cottage Cheese: Production by
State and United States, December 2002-2003**

State	Dec 2002	Nov ¹ 2003	Dec 2003	Change From	
				Dec 2002	Nov 2003
	<i>1,000 Pounds</i>	<i>1,000 Pounds</i>	<i>1,000 Pounds</i>	<i>Percent</i>	<i>Percent</i>
CA	148,513	151,019	163,685	10.2	8.4
ID	51,370	62,890	58,773	14.4	-6.5
IL	8,299	7,247	7,639	-8.0	5.4
IA	22,089	11,752	12,831	-41.9	9.2
MA	83	76	89	7.2	17.1
MN	53,182	46,423	52,830	-0.7	13.8
MO	7,603	10,275	7,557	-0.6	-26.5
NY	63,493	63,554	62,896	-0.9	-1.0
OH	14,429	13,268	14,961	3.7	12.8
PA	33,180	29,691	34,498	4.0	16.2
SD	13,419	12,239	11,788	-12.2	-3.7
UT	6,241	6,522	6,352	1.8	-2.6
WA	13,321				
WI	190,107	183,132	196,252	3.2	7.2
Oth Sts ²	121,832	112,290	122,983	0.9	9.5
US	747,161	710,378	753,134	0.8	6.0
N Atlantic	117,264	109,026	113,822	-2.9	4.4
S Atlantic	2,513	2,910	2,538	1.0	-12.8
E N Central	228,927	214,651	232,855	1.7	8.5
W N Central	105,770	83,629	88,003	-16.8	5.2
S Central	7,045	7,225	7,159	1.6	-0.9
West	285,642	292,937	308,757	8.1	5.4

¹ Revised.

² States not shown when fewer than 3 plants reported or individual plant operations could be disclosed. Percent change shown only when comparable States are included in the calculation.

American Cheese: Production by State and United States, December 2002-2003

State	Dec 2002	Nov ¹ 2003	Dec 2003	Change From	
				Dec 2002	Nov 2003
	<i>1,000 Pounds</i>	<i>1,000 Pounds</i>	<i>1,000 Pounds</i>	<i>Percent</i>	<i>Percent</i>
CA	70,410	66,829	69,035	-2.0	3.3
ID	37,279	42,856	43,905	17.8	2.4
IA	12,223	9,200	10,168	-16.8	10.5
MN	51,076	43,954	50,971	-0.2	16.0
NY	7,550	6,419	8,421	11.5	31.2
OH	2,820	2,382	2,859	1.4	20.0
OR	8,088	8,424	8,507	5.2	1.0
SD	6,638	6,540	7,316	10.2	11.9
WA	13,299				
WI	73,566	63,200	71,100	-3.4	12.5
Oth Sts ²	34,477	43,367	46,555	35.0	7.4
US	317,426	293,171	318,837	0.4	8.8
Atlantic	13,325	12,333	13,531	1.5	9.7
E N Central	77,785	66,464	74,948	-3.6	12.8
W N Central	71,472	60,064	68,811	-3.7	14.6
S Central	4,985	3,918	4,951	-0.7	26.4
West	149,859	150,392	156,596	4.5	4.1

¹ Revised.

² States not shown when fewer than 3 plants reported or individual plant operations could be disclosed. Percent change shown only when comparable States are included in the calculation.

Cheddar Cheese: Production by State and United States, December 2002-2003

State	Dec 2002	Nov ¹ 2003	Dec 2003	Change From	
				Dec 2002	Nov 2003
	<i>1,000 Pounds</i>	<i>1,000 Pounds</i>	<i>1,000 Pounds</i>	<i>Percent</i>	<i>Percent</i>
CA	50,846	42,035	44,969	-11.6	7.0
ID	14,784	19,995	21,617	46.2	8.1
MN	46,421	39,560	46,534	0.2	17.6
NY	7,464	6,268	8,275	10.9	32.0
SD	4,477	4,070	4,615	3.1	13.4
WA	10,918				
WI	59,068	48,700	55,800	-5.5	14.6
Oth Sts ²	46,225	54,385	57,755	24.9	6.2
US	240,203	215,013	239,565	-0.3	11.4
Atlantic	12,900	11,953	12,906		8.0
E N Cen	60,943	50,581	57,842	-5.1	14.4
W N Cen	58,791	50,055	58,313	-0.8	16.5
S Cen	4,980	3,917	4,950	-0.6	26.4
West	102,589	98,507	105,554	2.9	7.2

¹ Revised.

² States not shown when fewer than 3 plants reported or individual plant operations could be disclosed. Percent change shown only when comparable States are included in the calculation.

Mozzarella Cheese: Production by State and United States, December 2002-2003

State	Dec 2002	Nov ¹ 2003	Dec 2003	Change From	
				Dec 2002	Nov 2003
	<i>1,000 Pounds</i>	<i>1,000 Pounds</i>	<i>1,000 Pounds</i>	<i>Percent</i>	<i>Percent</i>
CA	59,861	67,502	72,298	20.8	7.1
NY	17,566	16,351	16,347	-6.9	
PA	18,554	15,310	17,301	-6.8	13.0
WI	62,463	61,200	68,400	9.5	11.8
Oth Sts ²	90,157	69,227	73,799	-18.1	6.6
US	248,601	229,590	248,145	-0.2	8.1
Atlantic ³	48,042	38,586	41,919	-12.7	8.6
E N Central	77,093	71,329	81,454	5.7	14.2
West	107,009	112,843	119,177	11.4	5.6

¹ Revised.

² States not shown when fewer than 3 plants reported or individual plant operations could be disclosed. Percent change shown only when comparable States are included in the calculation.

³ Region totals may not add to U.S. when compiled regions could not be disclosed.

Butter: Production by State and United States, December 2002-2003

State	Dec 2002	Nov ¹ 2003	Dec 2003	Change From	
				Dec 2002	Nov 2003
	<i>1,000 Pounds</i>	<i>1,000 Pounds</i>	<i>1,000 Pounds</i>	<i>Percent</i>	<i>Percent</i>
CA	35,838	30,591	33,887	-5.4	10.8
NY	2,662	1,684	2,056	-22.8	22.1
PA	6,965	3,916	5,669	-18.6	44.8
WA	8,967				
WI	32,758	21,000	26,600	-18.8	26.7
Oth Sts ²	40,401	30,785	46,158	14.2	49.9
US	127,591	87,976	114,370	-10.4	30.0
N Atlantic ³	13,234	7,302	11,178	-15.5	53.1
E N Central	37,826	24,971	31,104	-17.8	24.6
W N Central	10,966	7,528	9,484	-13.5	26.0
West	50,511	42,044	49,371	-2.3	17.4

¹ Revised.

² States not shown when fewer than 3 plants reported or individual plant operations could be disclosed. Percent change shown only when comparable States are included in the calculation.

³ Region totals may not add to U.S. when compiled regions could not be disclosed.

**Nonfat Dry Milk, Human: Production by State
and United States, December 2002-2003**

State	Dec 2002	Nov ¹ 2003	Dec 2003	Change From	
				Dec 2002	Nov 2003
	<i>1,000 Pounds</i>	<i>1,000 Pounds</i>	<i>1,000 Pounds</i>	<i>Percent</i>	<i>Percent</i>
CA	66,113	60,292	64,618	-2.3	7.2
ID	5,296	4,010	4,158	-21.5	3.7
WA	15,700				
Oth Sts ²	45,385	39,132	63,438	39.8	62.1
US	132,494	103,434	132,214	-0.2	27.8
Atlantic	12,947	6,605	16,076	24.2	143.4
E N Central	6,391	2,590	5,845	-8.5	125.7
W N Central	7,282	5,950	6,310	-13.3	6.1
S Central	6,204	2,399	5,713	-7.9	138.1
West	99,670	85,890	98,270	-1.4	14.4

¹ Revised.

² States not shown when fewer than 3 plants reported or individual plant operations could be disclosed. Percent change shown only when comparable States are included in the calculation.

**Dry Whey, Human: Production by State
and United States, December 2002-2003**

State	Dec 2002	Nov ¹ 2003	Dec 2003	Change From	
				Dec 2002	Nov 2003
	<i>1,000 Pounds</i>	<i>1,000 Pounds</i>	<i>1,000 Pounds</i>	<i>Percent</i>	<i>Percent</i>
CA	13,229	10,269	11,092	-16.2	8.0
MN	7,404	6,936	6,309	-14.8	-9.0
NY	8,892	8,829	9,264	4.2	4.9
PA	10,299	7,016	8,578	-16.7	22.3
WA	8,121				
WI	27,962	22,585	24,400	-12.7	8.0
Oth Sts ²	16,181	18,279	20,263	25.2	10.9
US	92,088	73,914	79,906	-13.2	8.1
Atlantic	19,191	15,845	17,842	-7.0	12.6
Central	47,068	35,935	38,309	-18.6	6.6
West	25,829	22,134	23,755	-8.0	7.3

¹ Revised.

² States not shown when fewer than 3 plants reported or individual plant operations could be disclosed. Percent change shown only when comparable States are included in the calculation.

Ice Cream, Hard: Production by State and United States, December 2002-2003

State	Dec 2002	Nov ¹ 2003	Dec 2003	Change From	
				Dec 2002	Nov 2003
	<i>1,000 Gallons</i>	<i>1,000 Gallons</i>	<i>1,000 Gallons</i>	<i>Percent</i>	<i>Percent</i>
CA	6,674	8,370	7,178	7.6	-14.2
FL	1,769	2,050	2,100	18.7	2.4
IL	2,104	2,253	2,156	2.5	-4.3
IN	5,580	5,806	5,367	-3.8	-7.6
MD	694	843	694		-17.7
MA	3,478	3,894	3,692	6.2	-5.2
MI	1,376	883	1,166	-15.3	32.0
MN	2,452	2,839	2,471	0.8	-13.0
MO	1,056	982	1,271	20.4	29.4
NY	1,904	2,000	1,900	-0.2	-5.0
NC	981	766	1,041	6.1	35.9
OH	2,599	1,661	1,458	-43.9	-12.2
OR	724	750	930	28.5	24.0
PA	3,021	2,939	2,983	-1.3	1.5
SD	3	2	3		50.0
TN	1,104	1,061	873	-20.9	-17.7
TX	3,439	3,347	3,428	-0.3	2.4
UT	1,095	1,536	1,852	69.1	20.6
WA	812	642	651	-19.8	1.4
Oth Sts ²	13,038	15,284	13,148	0.8	-14.0
US	53,903	57,908	54,362	0.9	-6.1
N Atlantic	9,886	10,924	10,370	4.9	-5.1
S Atlantic	4,985	4,587	5,007	0.4	9.2
E N Central	12,212	11,175	10,729	-12.1	-4.0
W N Central	8,867	10,000	8,915	0.5	-10.9
S Central	7,185	7,175	6,998	-2.6	-2.5
West	10,768	14,047	12,343	14.6	-12.1

¹ Revised.

² States not shown when fewer than 3 plants reported or individual plant operations could be disclosed. Percent change shown only when comparable States are included in the calculation.

**Canned Milk and Dry Milk Products: Manufacturers' Shipments,
Stocks, and Selling Prices, December, 2002-2003**

Product	Dec 2002	Nov 2003 ¹	Dec 2003	Change From	
				Dec 2002	Nov 2003
Manufacturers' Shipments ²					
	<i>1,000 Pounds</i>	<i>1,000 Pounds</i>	<i>1,000 Pounds</i>	<i>Percent</i>	<i>Percent</i>
Nonfat Dry Milk, Human ³	104,962	82,228	89,579	-14.7	8.9
Manufacturers' Stocks End-of-Month ⁴					
	<i>1,000 Pounds</i>	<i>1,000 Pounds</i>	<i>1,000 Pounds</i>	<i>Percent</i>	<i>Percent</i>
Canned Evaporated and Condensed Whole Milk	53,871	38,368	37,131	-31.1	-3.2
Nonfat Dry Milk, Human	90,501	87,276	107,020	18.3	22.6
Dry Buttermilk, Total ⁵	7,451	2,185	2,942	-60.5	34.6

¹ Revised.

² For dry products, shipments of bulk goods only.

³ Preliminary revisions for Manufacturer's Shipments and Stocks End-of-Month for Nonfat Dry Milk, Human, for 2002 and 2003 can be found in the table below.

⁴ Stocks held by manufacturers at all points and in transit.

⁵ Preliminary revisions for Stocks End-of-Month for Dry Buttermilk, Total, for 2002 and 2003 can be found in the table below.

**Preliminary Revisions: Nonfat Dry Milk, Human
2002-2003**

Month	Manufacturer's Shipments		Stocks	
	2002	2003	2002	2003
	<i>1,000 Pounds</i>	<i>1,000 Pounds</i>	<i>1,000 Pounds</i>	<i>1,000 Pounds</i>
Jan	133,335	119,849	101,116	99,593
Feb	112,323	107,906	126,759	104,460
Mar	129,756	126,071	139,682	122,376
Apr	154,477	141,728	140,830	128,840
May	162,830	142,414	142,938	128,322
Jun	149,937	133,564	147,811	123,163
Jul	146,262	145,280	126,070	89,508
Aug	148,557	104,571	94,471	75,266
Sep	117,283	98,118	71,655	69,222
Oct	100,684	91,619	69,340	69,365
Nov	87,522	82,228	73,912	87,276
Dec	104,962	89,579	90,501	107,020

**Preliminary Revisions: Dry Buttermilk, Total
2002-2003**

Month	Stocks	
	2002	2003
	<i>1,000 Pounds</i>	<i>1,000 Pounds</i>
Jan	7,835	9,226
Feb	8,035	9,027
Mar	8,506	10,015
Apr	11,344	11,156
May	12,020	9,469
Jun	11,726	7,043
Jul	10,926	2,521
Aug	8,332	2,335
Sep	6,916	2,269
Oct	4,648	2,145
Nov	5,766	2,185
Dec	7,451	2,942

Procedures and Reliability: Estimates included in this report are based on data provided each month by manufacturers of these products. In 32 States, the State Departments of Agriculture assist in collection of data, which eliminates duplicate reporting and reduces respondent burden. Data are collected by mail, personal and telephone interviews following the close of each month. There were 1,153 manufacturers that made one or more products in 2002. Each month, reports are generally received from all dairy plants in States with small numbers of plants. In States with large numbers of plants, survey procedures are designed to obtain monthly reports from all large plants and from a sample of small plants. Monthly estimates are based upon returns from about 70 percent of the plants which account for 70 to 90 percent of the total production of major dairy products.

Revision Policy: Monthly estimates are subject to revision the month following the preliminary estimates. Annual estimates are published in the "**Dairy Products**" report published each April which includes any revisions made to current and previous year. An attempt is made to get information from all plants for preparing these estimates.

The next "*Dairy Products*" report will be released at 3 p.m. ET on March 4, 2004.

The United States Department of Agriculture (USDA) prohibits discrimination in all its programs on the basis of race, color, national origin, gender, religion, age, disability, political beliefs, sexual orientation, and marital or family status. (Not all prohibited bases apply to all programs.) Persons with disabilities who require alternative means for communication of program information (braille, large print, audiotape, etc.) should contact the USDA's TARGET Center at 202-720-2600 (voice and TDD).

To file a complaint of discrimination, write USDA, Director, Office of Civil Rights, Room 326-W, Whitten Building, 1400 Independence Avenue, SW, Washington, D.C., 20250-9410, or call 202-720-5964 (voice or TDD). USDA is an equal opportunity provider and employer.

ACCESS TO REPORTS!!

For your convenience, there are several ways to obtain NASS reports, data products, and services:

INTERNET ACCESS

All NASS reports are available free of charge on the worldwide Internet. For access, connect to the Internet and go to the NASS Home Page at: www.usda.gov/nass/. Select "Today's Reports" or Publications and then Reports Calendar or Publications and then Search, by Title or Subject.

E-MAIL SUBSCRIPTION

All NASS reports are available by subscription free of charge direct to your e-mail address. Starting with the NASS Home Page at www.usda.gov/nass/, click on **Publications**, then click on the **Subscribe by E-mail** button which takes you to the page describing e-mail delivery of reports. Finally, click on **Go to the Subscription Page** and follow the instructions.

PRINTED REPORTS OR DATA PRODUCTS

CALL OUR TOLL-FREE ORDER DESK: 800-999-6779 (U.S. and Canada)
Other areas, please call 703-605-6220 FAX: 703-605-6900
(Visa, MasterCard, check, or money order acceptable for payment.)

ASSISTANCE

For **assistance** with general agricultural statistics or further information about NASS or its products or services, contact the **Agricultural Statistics Hotline** at **800-727-9540**, 7:30 a.m. to 4:00 p.m. ET, or e-mail: nass@nass.usda.gov.
