

Released March 4, 2004, by the National Agricultural Statistics Service (NASS), Agricultural Statistics Board, U.S. Department of Agriculture. For information on "Dairy Products" call Kevin Pautler at (202) 720-9168, office hours 7:30 a.m. to 4:00 p.m. ET.

January 2004 Highlights

Total cheese output (excluding cottage cheese) was 735 million pounds, 2.4 percent above January 2003 but 2.5 percent below December 2003.

American type cheese production totaled 320 million pounds, 0.2 percent above January 2003 and 0.3 percent above December 2003.

Butter production was 132 million pounds in January, 6.8 percent below January 2003 but 15.3 percent above December 2003.

Frozen dessert: (comparisons with January 2003)

Ice cream, Regular (hard) --- 59.5 million gallons, down 11.6 percent.

Ice cream, Lowfat (total) --- 25.4 million gallons, up 0.3 percent.

Ice cream, Nonfat (hard) --- 1.40 million gallons, down 11.5 percent.

Sherbet (hard) --- 3.77 million gallons, down 7.0 percent.

Frozen Yogurt (total) --- 4.41 million gallons, down 22.9 percent.

Nonfat dry milk for human food: (compared with January 2003) --- 120 million pounds, down 10.2 percent.

Dry whey products: (comparisons with January 2003)

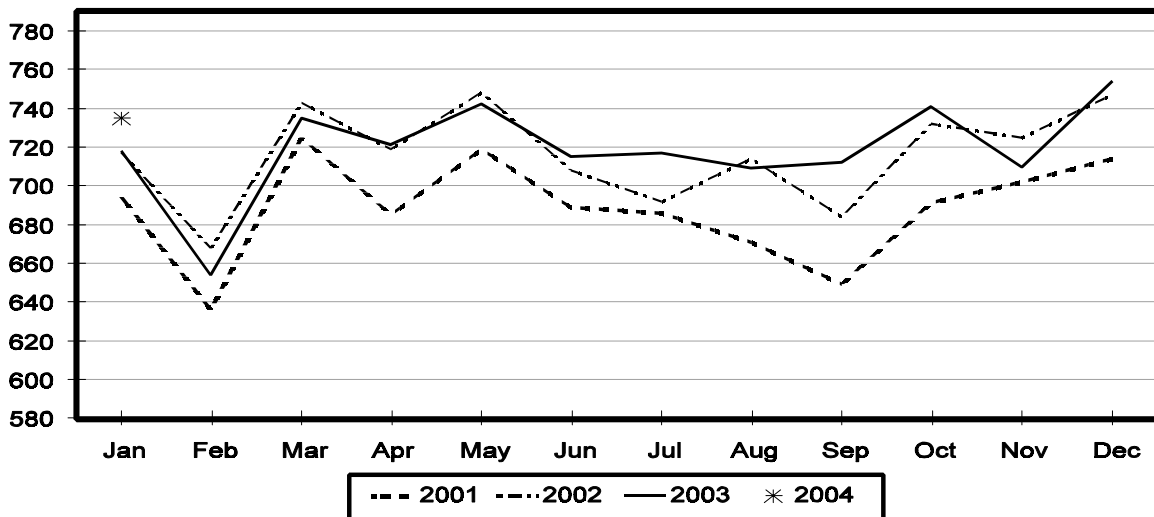
Dry whey, human --- 82.9 million pounds, down 9.6 percent.

Dry whey, animal --- 7.61 million pounds, up 28.3 percent.

Dry whey, total --- 90.5 million pounds, down 7.3 percent.

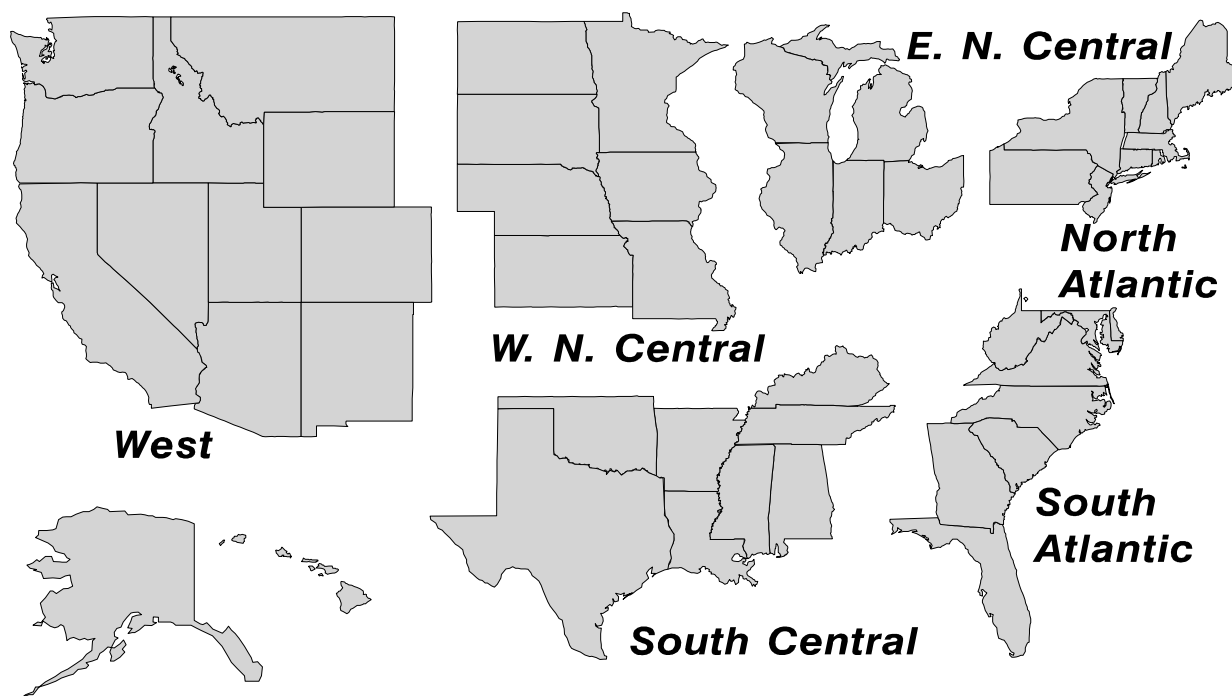
Total Cheese Production United States

Million Pounds



U. S. Geographic Regions Dairy Products

State totals are not published when fewer than 3 firms have reported or one firm comprises more than 60 percent of the State total. If we are not able to publish a region for confidentiality reasons, it will be combined with other regions when possible. For example, if North Atlantic can not be published, then it will be combined with South Atlantic to publish Atlantic. The West North Central and East North Central will be combined, if necessary, to form North Central. In the event that neither could be published, they may be combined with South Central to publish Central. Some tables will have only limited regions shown, therefore the regions may not add to the United States total.



**Dairy Products: Production by Product,
United States, January, 2003-2004**

Product	Jan 2003	Dec 2003 ¹	Jan 2004	Change From	
				Jan 2003	Dec 2003
	<i>1,000 Pounds</i>	<i>1,000 Pounds</i>	<i>1,000 Pounds</i>	<i>Percent</i>	<i>Percent</i>
Butter	141,440	114,390	131,884	-6.8	15.3
Cheese					
American Types ²	319,517	319,392	320,304	0.2	0.3
Cheddar	247,786	239,932	243,907	-1.6	1.7
Swiss	22,758	23,592	23,198	1.9	-1.7
Brick and Muenster	6,922	7,216	6,842	-1.2	-5.2
Cream and Neufchatel	48,276	59,060	48,271		-18.3
Hispanic	10,245	11,442	10,882	6.2	-4.9
Mozzarella	232,355	248,086	244,158	5.1	-1.6
Other Italian Types	60,990	64,337	62,091	1.8	-3.5
Total Italian Types	293,345	312,423	306,249	4.4	-2.0
All Other Types	16,700	21,077	19,429	16.3	-7.8
Total	717,763	754,202	735,175	2.4	-2.5
Cottage Cheese, Curd ³	35,669	34,387	37,628	5.5	9.4
Cottage Cheese, Cream ⁴	31,386	28,793	31,747	1.2	10.3
Cottage Cheese, Lowfat ⁵	30,397	28,652	31,313	3.0	9.3
Canned Evaporated and					
Condensed Whole Milk	39,449	42,320	39,218	-0.6	-7.3
Dry Whole Milk	2,728	2,608	2,972	8.9	14.0
Nonfat Dry Milk, Human	133,758	132,214	120,112	-10.2	-9.2
Dry Skim Milk, Animal	474	356	433	-8.6	21.6
Dry Buttermilk	7,009	5,557	5,832	-16.8	4.9
Sour Cream	76,716	92,850	78,110	1.8	-15.9
Yogurt, Plain & Flavored	169,417	179,146	214,443	26.6	19.7
	<i>1,000 Gallons</i>	<i>1,000 Gallons</i>	<i>1,000 Gallons</i>	<i>Percent</i>	<i>Percent</i>
Frozen Products					
Ice Cream, Hard	67,337	54,399	59,521	-11.6	9.4
Ice Cream, Lowfat, Hard	8,174	6,922	7,506	-8.2	8.4
Ice Cream, Lowfat, Soft	17,100	19,627	17,850	4.4	-9.1
Ice Cream, Lowfat, Total	25,274	26,549	25,356	0.3	-4.5
Ice Cream, Nonfat, Hard	1,584	1,301	1,402	-11.5	7.8
Sherbet, Hard	4,056	3,389	3,771	-7.0	11.3
Water and Juice Ices	4,519	2,883	4,572	1.2	58.6
Frozen Yogurt, Total	5,719	4,043	4,410	-22.9	9.1
Regular & Lowfat, Hard	1,642	1,234	1,498	-8.8	21.4
Nonfat, Hard	832	744	813	-2.3	9.3
Other Frozen Dairy					
Products	588	598	600	2.0	0.3
Mix for Frozen Products					
Ice Cream Mix	39,574	32,249	34,581	-12.6	7.2
Ice Cream, Lowfat, Mix	13,963	14,732	14,035	0.5	-4.7
Ice Cream, Nonfat, Mix	1,144	951	926	-19.1	-2.6
Sherbet Mix	2,777	2,403	2,594	-6.6	7.9
Yogurt Mix	3,364	2,378	2,594	-22.9	9.1

¹ Revised.

² Includes Cheddar, Colby, Monterey, and Jack.

³ Mostly used for processing into cream or lowfat cottage cheese.

⁴ Fat content 4 percent or more.

⁵ Fat content less than 4 percent.

**Whey and Modified Whey Products: Production, Stocks,
and Prices, United States, January, 2003-2004**

Product	Jan 2003	Dec 2003 ¹	Jan 2004	Change From	
				Jan 2003	Dec 2003
Production					
	<i>1,000 Pounds</i>	<i>1,000 Pounds</i>	<i>1,000 Pounds</i>	<i>Percent</i>	<i>Percent</i>
Condensed Whey, Solids Content ²					
Sweet-Type, Human	10,244	9,845	8,738	-14.7	-11.2
Dry Whey Products					
Dry Whey, Human	91,736	81,269	82,885	-9.6	2.0
Dry Whey, Animal	5,928	8,932	7,607	28.3	-14.8
Dry Whey, Total	97,664	90,201	90,492	-7.3	0.3
Reduced Lactose and Minerals					
Human Food	4,457	4,367	3,356	-24.7	-23.2
Animal Feed	3,876	3,453	3,540	-8.7	2.5
Lactose, Human and Animal	50,464	55,385	56,138	11.2	1.4
Whey					
Solids in Wet Blends, Animal ³	2,826	4,087			
Protein Concentrate, Human ⁷	28,504	24,361	25,363	-11.0	4.1
Protein Concentrate, Animal ⁷	3,169	3,808	3,335	5.2	-12.4
Manufacturers' Stocks End-of-Month ⁴					
	<i>1,000 Pounds</i>	<i>1,000 Pounds</i>	<i>1,000 Pounds</i>	<i>Percent</i>	<i>Percent</i>
Dry Whey Products					
Dry Whey, Human	39,519	40,853	38,906	-1.6	-4.8
Dry Whey, Animal	3,356	5,479	7,034	109.6	28.4
Reduced Lactose and Minerals					
Human and Animal ⁵	10,594	7,278	7,504	-29.2	3.1
Lactose, Human and Animal	42,676	49,983	50,127	17.5	0.3
Whey Protein Concentrate, Human ⁷	22,240	24,075	25,981	16.8	7.9
Whey Protein Concentrate, Animal ⁷	1,411	2,162	3,238	129.5	49.8
Manufacturers' Selling Price ⁶					
	<i>Cents per Pound</i>	<i>Cents per Pound</i>	<i>Cents per Pound</i>	<i>Cents Change</i>	<i>Cents Change</i>
Dry Whey, Animal	16.0	19.0	17.4	1.4	-1.6

¹ Revised.

² Final marketable product only. Does not include quantity used or shipped to another plant for further processing into dry whey or modified whey products. Does not include sweet-type, animal whey.

³ Not shown when fewer than three plants reported or individual plant operations could be disclosed.

⁴ Stocks held by manufacturers at all points and in transit.

⁵ Reduced lactose and minerals stocks combined to avoid disclosure of individual operations.

⁶ Prices for bulk goods, f.o.b. plant. Average monthly prices reported by firms.

⁷ Whey Protein Concentrate, 25.0 to 89.9 percent.

**Dairy Products: Production by Product and Month,
United States, 2003-2004 ¹**

Product and Month	By Month			Cumulative		
	2003	2004	Change From 2003	2003	2004	Change From 2003
	<i>1,000 Pounds</i>	<i>1,000 Pounds</i>	<i>Percent</i>	<i>1,000 Pounds</i>	<i>1,000 Pounds</i>	<i>Percent</i>
Total Cheese ³						
Jan	717,763	735,175	2.4	717,763	735,175	2.4
Feb	653,516			1,371,279		
Mar	735,370			2,106,649		
Apr	721,438			2,828,087		
May	742,179			3,570,266		
Jun	714,533			4,284,799		
Jul	717,211			5,002,010		
Aug	709,043			5,711,053		
Sep	712,108			6,423,161		
Oct	741,368			7,164,529		
Nov	710,378			7,874,907		
Dec	754,202			8,629,109		
American Cheese						
Jan	319,517	320,304	0.2	319,517	320,304	0.2
Feb	285,649			605,166		
Mar	318,491			923,657		
Apr	308,599			1,232,256		
May	320,185			1,552,441		
Jun	307,233			1,859,674		
Jul	306,545			2,166,219		
Aug	302,139			2,468,358		
Sep	290,065			2,758,423		
Oct	304,497			3,062,920		
Nov	293,171			3,356,091		
Dec	319,392			3,675,483		
Cheddar Cheese						
Jan	247,786	243,907	-1.6	247,786	243,907	-1.6
Feb	218,823			466,609		
Mar	242,232			708,841		
Apr	234,713			943,554		
May	240,929			1,184,483		
Jun	231,985			1,416,468		
Jul	231,588			1,648,056		
Aug	227,936			1,875,992		
Sep	214,132			2,090,124		
Oct	221,082			2,311,206		
Nov	215,013			2,526,219		
Dec	239,932			2,766,151		

See footnote(s) at end of table.

--continued

**Dairy Products: Production by Product and Month,
United States, 2003-2004¹ (continued)**

Product and Month	By Month			Cumulative		
	2003	2004	Change From 2003	2003	2004	Change From 2003
	<i>1,000 Pounds</i>	<i>1,000 Pounds</i>	<i>Percent</i>	<i>1,000 Pounds</i>	<i>1,000 Pounds</i>	<i>Percent</i>
Italian Cheese ³						
Jan	293,345	306,249	4.4	293,345	306,249	4.4
Feb	272,616			565,961		
Mar	305,440			871,401		
Apr	303,372			1,174,773		
May	307,923			1,482,696		
Jun	293,488			1,776,184		
Jul	292,661			2,068,845		
Aug	291,828			2,360,673		
Sep	290,995			2,651,668		
Oct	298,592			2,950,260		
Nov	288,386			3,238,646		
Dec	312,423			3,551,069		
Mozzarella						
Jan	232,355	244,158	5.1	232,355	244,158	5.1
Feb	218,084			450,439		
Mar	243,230			693,669		
Apr	242,905			936,574		
May	252,404			1,188,978		
Jun	237,956			1,426,934		
Jul	235,700			1,662,634		
Aug	235,603			1,898,237		
Sep	229,124			2,127,361		
Oct	233,677			2,361,038		
Nov	229,590			2,590,628		
Dec	248,086			2,838,714		
Other Italian						
Jan	60,990	62,091	1.8	60,990	62,091	1.8
Feb	54,532			115,522		
Mar	62,210			177,732		
Apr	60,467			238,199		
May	55,519			293,718		
Jun	55,532			349,250		
Jul	56,961			406,211		
Aug	56,225			462,436		
Sep	61,871			524,307		
Oct	64,915			589,222		
Nov	58,796			648,018		
Dec	64,337			712,355		

See footnote(s) at end of table.

--continued

**Dairy Products: Production by Product and Month,
United States, 2003-2004¹ (continued)**

Product and Month	By Month			Cumulative		
	2003	2004	Change From 2003	2003	2004	Change From 2003
	<i>1,000 Pounds</i>	<i>1,000 Pounds</i>	<i>Percent</i>	<i>1,000 Pounds</i>	<i>1,000 Pounds</i>	<i>Percent</i>
Butter						
Jan	141,440	131,884	-6.8	141,440	131,884	-6.8
Feb	128,362			269,802		
Mar	126,338			396,140		
Apr	122,715			518,855		
May	114,678			633,533		
Jun	83,836			717,369		
Jul	79,546			796,915		
Aug	70,144			867,059		
Sep	73,091			940,150		
Oct	97,040			1,037,190		
Nov	87,976			1,125,166		
Dec	114,390			1,239,556		
Nonfat Dry Milk, Human						
Jan	133,758	120,112	-10.2	133,758	120,112	-10.2
Feb	130,355			264,113		
Mar	146,276			410,389		
Apr	150,404			560,793		
May	154,168			714,961		
Jun	130,791			845,752		
Jul	121,976			967,728		
Aug	100,673			1,068,401		
Sep	88,498			1,156,899		
Oct	99,018			1,255,917		
Nov	103,434			1,359,351		
Dec	132,214			1,491,565		
Total Dry Whey ²						
Jan	97,664	90,492	-7.3	97,664	90,492	-7.3
Feb	88,712			186,376		
Mar	101,088			287,464		
Apr	95,034			382,498		
May	100,893			483,391		
Jun	95,163			578,554		
Jul	96,848			675,402		
Aug	90,569			765,971		
Sep	87,450			853,421		
Oct	88,707			942,128		
Nov	81,010			1,023,138		
Dec	90,201			1,113,339		

See footnote(s) at end of table.

--continued

**Dairy Products: Production by Product and Month,
United States, 2003-2004¹ (continued)**

Product and Month	By Month			Cumulative		
	2003	2004	Change From 2003	2003	2004	Change From 2003
	<i>1,000 Pounds</i>	<i>1,000 Pounds</i>	<i>Percent</i>	<i>1,000 Pounds</i>	<i>1,000 Pounds</i>	<i>Percent</i>
Cream Cottage Cheese						
Jan	31,386	31,747	1.2	31,386	31,747	1.2
Feb	29,155			60,541		
Mar	31,991			92,532		
Apr	33,949			126,481		
May	32,767			159,248		
Jun	32,392			191,640		
Jul	34,497			226,137		
Aug	33,123			259,260		
Sep	32,462			291,722		
Oct	31,740			323,462		
Nov	27,933			351,395		
Dec	28,793			380,188		
Lowfat Cottage Cheese						
Jan	30,397	31,313	3.0	30,397	31,313	3.0
Feb	29,345			59,742		
Mar	32,459			92,201		
Apr	33,234			125,435		
May	32,398			157,833		
Jun	31,767			189,600		
Jul	33,036			222,636		
Aug	33,417			256,053		
Sep	31,629			287,682		
Oct	32,950			320,632		
Nov	29,202			349,834		
Dec	28,652			378,486		
	<i>1,000 Gallons</i>	<i>1,000 Gallons</i>	<i>Percent</i>	<i>1,000 Gallons</i>	<i>1,000 Gallons</i>	<i>Percent</i>
Ice Cream, Hard						
Jan	67,337	59,521	-11.6	67,337	59,521	-11.6
Feb	70,615			137,952		
Mar	73,595			211,547		
Apr	79,402			290,949		
May	79,138			370,087		
Jun	83,405			453,492		
Jul	82,942			536,434		
Aug	75,830			612,264		
Sep	71,799			684,063		
Oct	68,751			752,814		
Nov	57,908			810,722		
Dec	54,399			865,121		

See footnote(s) at end of table.

--continued

**Dairy Products: Production by Product and Month,
United States, 2003-2004¹ (continued)**

Product and Month	By Month			Cumulative		
	2003	2004	Change From 2003	2003	2004	Change From 2003
	<i>1,000 Gallons</i>	<i>1,000 Gallons</i>	<i>Percent</i>	<i>1,000 Gallons</i>	<i>1,000 Gallons</i>	<i>Percent</i>
Ice Cream, Lowfat						
Jan	25,274	25,356	0.3	25,274	25,356	0.3
Feb	25,853			51,127		
Mar	35,416			86,543		
Apr	37,557			124,100		
May	40,445			164,545		
Jun	42,666			207,211		
Jul	42,117			249,328		
Aug	38,545			287,873		
Sep	32,377			320,250		
Oct	30,584			350,834		
Nov	24,706			375,540		
Dec	26,549			402,089		
Ice Cream, NF, Hard						
Jan	1,584	1,402	-11.5	1,584	1,402	-11.5
Feb	1,689			3,273		
Mar	1,580			4,853		
Apr	1,908			6,761		
May	1,875			8,636		
Jun	1,935			10,571		
Jul	1,935			12,506		
Aug	1,535			14,041		
Sep	1,553			15,594		
Oct	1,690			17,284		
Nov	1,439			18,723		
Dec	1,301			20,024		
Sherbet, Hard						
Jan	4,056	3,771	-7.0	4,056	3,771	-7.0
Feb	4,406			8,462		
Mar	5,011			13,473		
Apr	5,438			18,911		
May	5,319			24,230		
Jun	5,835			30,065		
Jul	5,345			35,410		
Aug	4,699			40,109		
Sep	4,433			44,542		
Oct	4,079			48,621		
Nov	3,407			52,028		
Dec	3,389			55,417		

See footnote(s) at end of table.

--continued

**Dairy Products: Production by Product and Month,
United States, 2003-2004¹ (continued)**

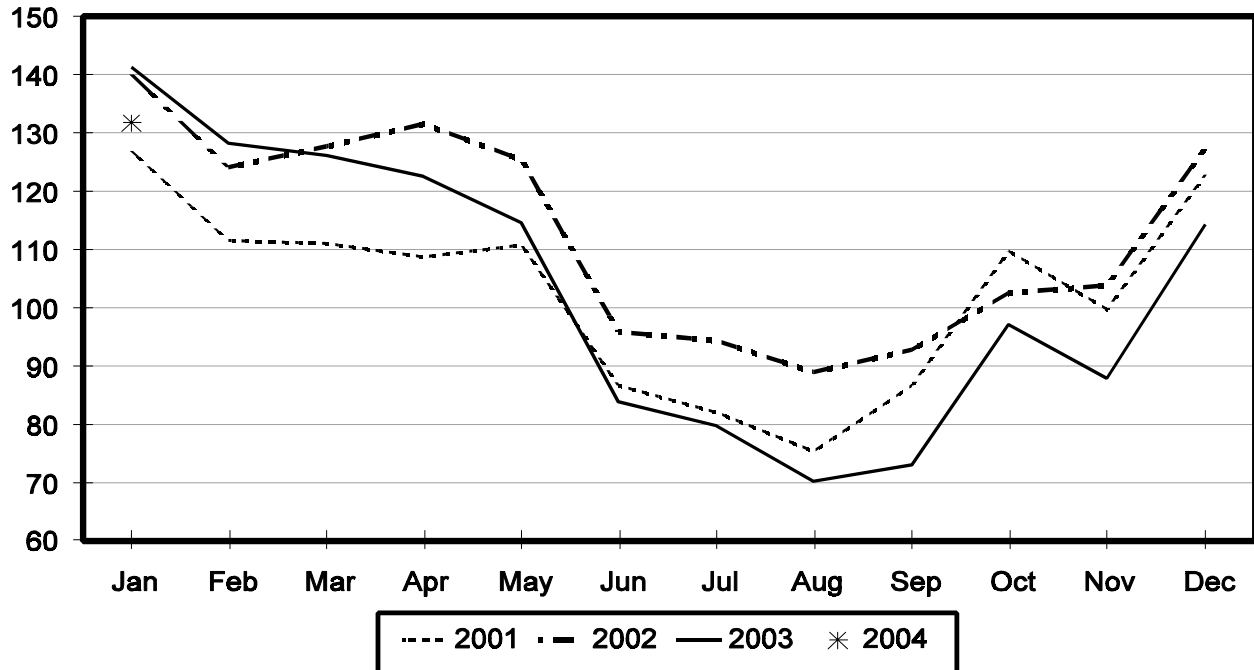
Product and Month	By Month			Cumulative		
	2003	2004	Change From 2003	2003	2004	Change From 2003
	<i>1,000 Gallons</i>	<i>1,000 Gallons</i>	<i>Percent</i>	<i>1,000 Gallons</i>	<i>1,000 Gallons</i>	<i>Percent</i>
Frozen Yogurt						
Jan	5,719	4,410	-22.9	5,719	4,410	-22.9
Feb	5,505			11,224		
Mar	5,794			17,018		
Apr	6,370			23,388		
May	6,482			29,870		
Jun	5,906			35,776		
Jul	5,853			41,629		
Aug	5,610			47,239		
Sep	5,360			52,599		
Oct	4,879			57,478		
Nov	4,231			61,709		
Dec	4,043			65,752		

¹ December 2003 data revised.

² Excludes all modified dry whey products.

Total Butter Production United States

Million Pounds



**Total Cheese, Excluding Cottage Cheese: Production by
State and United States, January 2003-2004**

State	Jan 2003	Dec ¹ 2003	Jan 2004	Change From	
				Jan 2003	Dec 2003
	<i>1,000 Pounds</i>	<i>1,000 Pounds</i>	<i>1,000 Pounds</i>	<i>Percent</i>	<i>Percent</i>
CA	146,624	163,685	167,709	14.4	2.5
ID	51,240	58,774	55,836	9.0	-5.0
IL	8,471	7,794	7,609	-10.2	-2.4
IA	22,793	13,021	13,122	-42.4	0.8
MA	58	89	61	5.2	-31.5
MN	54,372	53,003	51,699	-4.9	-2.5
MO	5,906	7,559	6,224	5.4	-17.7
NY	56,340	63,016	57,963	2.9	-8.0
OH	14,634	14,958	15,706	7.3	5.0
PA	31,913	34,498	30,795	-3.5	-10.7
SD	13,067	11,665	11,143	-14.7	-4.5
UT	5,531	6,352	4,641	-16.1	-26.9
WI	182,679	196,439	192,627	5.4	-1.9
Oth Sts ²	124,135	123,349	120,040	-3.3	-2.7
US	717,763	754,202	735,175	2.4	-2.5
N Atlantic	103,692	113,836	104,386	0.7	-8.3
S Atlantic	3,588	2,537	3,643	1.5	43.6
E N Central	222,226	233,194	227,951	2.6	-2.2
W N Central	104,605	88,451	86,042	-17.7	-2.7
S Central	6,838	7,426	7,449	8.9	0.3
West	276,814	308,758	305,704	10.4	-1.0

¹ Revised.

² States not shown when fewer than 3 plants reported or individual plant operations could be disclosed. Percent change shown only when comparable States are included in the calculation.

American Cheese: Production by State and United States, January 2003-2004

State	Jan 2003	Dec ¹ 2003	Jan 2004	Change From	
				Jan 2003	Dec 2003
	<i>1,000 Pounds</i>	<i>1,000 Pounds</i>	<i>1,000 Pounds</i>	<i>Percent</i>	<i>Percent</i>
CA	70,469	69,035	70,654	0.3	2.3
ID	39,006	43,906	43,227	10.8	-1.5
IA	12,275	10,367	10,427	-15.1	0.6
MN	52,732	51,145	49,462	-6.2	-3.3
NY	9,021	8,421	8,377	-7.1	-0.5
OH	3,332	2,859	3,051	-8.4	6.7
OR	8,167	8,507	8,320	1.9	-2.2
SD	6,827	7,289	7,024	2.9	-3.6
WI	71,500	71,100	73,200	2.4	3.0
Oth Sts ²	46,188	46,763	46,562	0.8	-0.4
US	319,517	319,392	320,304	0.2	0.3
Atlantic	15,469	13,531	14,587	-5.7	7.8
E N Central	76,294	74,948	77,454	1.5	3.3
W N Central	73,484	69,365	67,372	-8.3	-2.9
S Central	4,187	4,951	4,319	3.2	-12.8
West	150,083	156,597	156,572	4.3	

¹ Revised.

² States not shown when fewer than 3 plants reported or individual plant operations could be disclosed. Percent change shown only when comparable States are included in the calculation.

Cheddar Cheese: Production by State and United States, January 2003-2004

State	Jan 2003	Dec ¹ 2003	Jan 2004	Change From	
				Jan 2003	Dec 2003
	<i>1,000 Pounds</i>	<i>1,000 Pounds</i>	<i>1,000 Pounds</i>	<i>Percent</i>	<i>Percent</i>
CA	51,705	44,969	47,149	-8.8	4.8
ID	17,557	21,618	22,488	28.1	4.0
MN	49,246	46,708	44,408	-9.8	-4.9
NY	8,935	8,275	8,286	-7.3	0.1
SD	5,250	4,588	4,953	-5.7	8.0
WI	57,700	55,800	59,000	2.3	5.7
Oth Sts ²	57,393	57,974	57,623	0.4	-0.6
US	247,786	239,932	243,907	-1.6	1.7
Atlantic	14,927	12,906	13,980	-6.3	8.3
E N Cen	60,412	57,842	61,223	1.3	5.8
W N Cen	62,832	58,679	56,698	-9.8	-3.4
S Cen	4,177	4,950	4,318	3.4	-12.8
West	105,438	105,555	107,688	2.1	2.0

¹ Revised.

² States not shown when fewer than 3 plants reported or individual plant operations could be disclosed. Percent change shown only when comparable States are included in the calculation.

Mozzarella Cheese: Production by State and United States, January 2003-2004

State	Jan 2003	Dec ¹ 2003	Jan 2004	Change From	
				Jan 2003	Dec 2003
	<i>1,000 Pounds</i>	<i>1,000 Pounds</i>	<i>1,000 Pounds</i>	<i>Percent</i>	<i>Percent</i>
CA	58,630	72,298	75,672	29.1	4.7
NY	18,036	16,340	16,679	-7.5	2.1
PA	18,203	17,301	18,286	0.5	5.7
WI	58,800	68,400	64,500	9.7	-5.7
Oth Sts ²	78,686	73,747	69,021	-12.3	-6.4
US	232,355	248,086	244,158	5.1	-1.6
Atlantic ³	43,797	41,860	42,739	-2.4	2.1
E N Central	73,673	81,454	75,711	2.8	-7.1
West	99,898	119,177	119,591	19.7	0.3

¹ Revised.

² States not shown when fewer than 3 plants reported or individual plant operations could be disclosed. Percent change shown only when comparable States are included in the calculation.

³ Region totals may not add to U.S. when compiled regions could not be disclosed.

Butter: Production by State and United States, January 2003-2004

State	Jan 2003	Dec ¹ 2003	Jan 2004	Change From	
				Jan 2003	Dec 2003
	<i>1,000 Pounds</i>	<i>1,000 Pounds</i>	<i>1,000 Pounds</i>	<i>Percent</i>	<i>Percent</i>
CA	39,525	33,887	38,113	-3.6	12.5
NY	2,673	2,062	2,445	-8.5	18.6
PA	4,403	5,669	6,595	49.8	16.3
WI	38,202	26,600	34,400	-10.0	29.3
Oth Sts ²	56,637	46,172	50,331	-11.1	9.0
US	141,440	114,390	131,884	-6.8	15.3
N Atlantic ³	11,416	11,208	13,350	16.9	19.1
E N Central	42,245	30,830	37,287	-11.7	20.9
W N Central	13,809	9,750	12,699	-8.0	30.2
West	56,360	49,371	54,528	-3.3	10.4

¹ Revised.

² States not shown when fewer than 3 plants reported or individual plant operations could be disclosed. Percent change shown only when comparable States are included in the calculation.

³ Region totals may not add to U.S. when compiled regions could not be disclosed.

**Nonfat Dry Milk, Human: Production by State
and United States, January 2003-2004**

State	Jan 2003	Dec ¹ 2003	Jan 2004	Change From	
				Jan 2003	Dec 2003
	<i>1,000 Pounds</i>	<i>1,000 Pounds</i>	<i>1,000 Pounds</i>	<i>Percent</i>	<i>Percent</i>
CA	61,373	64,618	62,458	1.8	-3.3
ID	6,333	4,158	4,158	-34.3	
Oth Sts ²	66,052	63,438	53,496	-19.0	-15.7
US	133,758	132,214	120,112	-10.2	-9.2
Atlantic	15,048	16,076	12,726	-15.4	-20.8
E N Central	4,346	5,845	2,154	-50.4	-63.1
W N Central	7,592	6,310	6,094	-19.7	-3.4
S Central	5,971	5,713	4,418	-26.0	-22.7
West	100,801	98,270	94,720	-6.0	-3.6

¹ Revised.

² States not shown when fewer than 3 plants reported or individual plant operations could be disclosed. Percent change shown only when comparable States are included in the calculation.

**Dry Whey, Human: Production by State
and United States, January 2003-2004**

State	Jan 2003	Dec ¹ 2003	Jan 2004	Change From	
				Jan 2003	Dec 2003
	<i>1,000 Pounds</i>	<i>1,000 Pounds</i>	<i>1,000 Pounds</i>	<i>Percent</i>	<i>Percent</i>
CA	12,688	11,092	10,812	-14.8	-2.5
MN	7,353	6,351	6,820	-7.2	7.4
NY	10,157	9,264	9,943	-2.1	7.3
PA	11,200	8,578	8,180	-27.0	-4.6
WI	25,289	24,386	25,400	0.4	4.2
Oth Sts ²	25,049	21,598	21,730	-13.3	0.6
US	91,736	81,269	82,885	-9.6	2.0
Atlantic	21,357	17,842	18,123	-15.1	1.6
Central	45,183	39,672	40,919	-9.4	3.1
West	25,196	23,755	23,843	-5.4	0.4

¹ Revised.

² States not shown when fewer than 3 plants reported or individual plant operations could be disclosed. Percent change shown only when comparable States are included in the calculation.

Ice Cream, Hard: Production by State and United States, January 2003-2004

State	Jan 2003	Dec ¹ 2003	Jan 2004	Change From	
				Jan 2003	Dec 2003
	<i>1,000 Gallons</i>	<i>1,000 Gallons</i>	<i>1,000 Gallons</i>	<i>Percent</i>	<i>Percent</i>
CA	7,647	7,178	6,241	-18.4	-13.1
FL	1,700	2,050	2,100	23.5	2.4
IL	2,581	2,156	2,777	7.6	28.8
IN	7,145	5,367	5,776	-19.2	7.6
MD	1,476	694	1,446	-2.0	108.4
MA	5,351	3,692	4,465	-16.6	20.9
MI	1,630	1,166	1,451	-11.0	24.4
MN	2,634	2,471	2,657	0.9	7.5
MO	1,892	1,271	1,697	-10.3	33.5
NY	2,200	1,900	2,000	-9.1	5.3
NC	1,575	1,041	1,368	-13.1	31.4
OH	2,515	1,458	1,693	-32.7	16.1
OR	760	930	790	3.9	-15.1
PA	3,631	2,983	2,952	-18.7	-1.0
SD	3	3	3		
TN	1,316	873	1,041	-20.9	19.2
TX	3,878	3,428	3,685	-5.0	7.5
UT	1,426	1,852	1,618	13.5	-12.6
WA	1,287	651	698	-45.8	7.2
Oth Sts ²	16,690	13,235	15,063	-9.7	13.8
US	67,337	54,399	59,521	-11.6	9.4
N Atlantic	13,628	10,446	12,105	-11.2	15.9
S Atlantic	6,366	4,957	6,079	-4.5	22.6
E N Central	14,721	10,729	12,403	-15.7	15.6
W N Central	10,573	8,930	9,261	-12.4	3.7
S Central	8,545	6,998	7,678	-10.1	9.7
West	13,504	12,339	11,995	-11.2	-2.8

¹ Revised.

² States not shown when fewer than 3 plants reported or individual plant operations could be disclosed. Percent change shown only when comparable States are included in the calculation.

**Canned Milk and Dry Milk Products: Manufacturers' Shipments,
Stocks, and Selling Prices, January, 2003-2004**

Product	Jan 2003	Dec 2003 ¹	Jan 2004	Change From	
				Jan 2003	Dec 2003
	Manufacturers' Shipments ²				
	<i>1,000 Pounds</i>	<i>1,000 Pounds</i>	<i>1,000 Pounds</i>	<i>Percent</i>	<i>Percent</i>
Nonfat Dry Milk, Human ³	119,849	89,219	96,169	-19.8	7.8
	Manufacturers' Stocks End-of-Month ⁴				
	<i>1,000 Pounds</i>	<i>1,000 Pounds</i>	<i>1,000 Pounds</i>	<i>Percent</i>	<i>Percent</i>
Canned Evaporated and Condensed Whole Milk	51,988	36,753	36,338	-30.1	-1.1
Nonfat Dry Milk, Human	99,593	107,698	101,824	2.2	-5.5
Dry Buttermilk, Total	9,226	3,038	3,913	-57.6	28.8

¹ Revised.

² For dry products, shipments of bulk goods only.

³ Preliminary revisions for Manufacturer's Shipments and Stocks End-of-Month for Nonfat Dry Milk, Human, for 2002 and 2003 can be found in the table below.

⁴ Stocks held by manufacturers at all points and in transit.

Procedures and Reliability: Estimates included in this report are based on data provided each month by manufacturers of these products. In 32 States, the State Departments of Agriculture assist in collection of data, which eliminates duplicate reporting and reduces respondent burden. Data are collected by mail, personal and telephone interviews following the close of each month. There were 1,153 manufacturers that made one or more products in 2002. Each month, reports are generally received from all dairy plants in States with small numbers of plants. In States with large numbers of plants, survey procedures are designed to obtain monthly reports from all large plants and from a sample of small plants. Monthly estimates are based upon returns from about 70 percent of the plants which account for 70 to 90 percent of the total production of major dairy products.

Revision Policy: Monthly estimates are subject to revision the month following the preliminary estimates. Annual estimates are published in the "**Dairy Products**" report published each April which includes any revisions made to current and previous year. An attempt is made to get information from all plants for preparing these estimates.

The next "Dairy Products" report will be released at 3 p.m. ET on April 5, 2004.

The United States Department of Agriculture (USDA) prohibits discrimination in all its programs on the basis of race, color, national origin, gender, religion, age, disability, political beliefs, sexual orientation, and marital or family status. (Not all prohibited bases apply to all programs.) Persons with disabilities who require alternative means for communication of program information (braille, large print, audiotape, etc.) should contact the USDA's TARGET Center at 202-720-2600 (voice and TDD).

To file a complaint of discrimination, write USDA, Director, Office of Civil Rights, Room 326-W, Whitten Building, 1400 Independence Avenue, SW, Washington, D.C., 20250-9410, or call 202-720-5964 (voice or TDD). USDA is an equal opportunity provider and employer.

ACCESS TO REPORTS!!

For your convenience, there are several ways to obtain NASS reports, data products, and services:

INTERNET ACCESS

All NASS reports are available free of charge on the worldwide Internet. For access, connect to the Internet and go to the NASS Home Page at: www.usda.gov/nass/. Select "Today's Reports" or Publications and then Reports Calendar or Publications and then Search, by Title or Subject.

E-MAIL SUBSCRIPTION

All NASS reports are available by subscription free of charge direct to your e-mail address. Starting with the NASS Home Page at www.usda.gov/nass/, click on **Publications**, then click on the **Subscribe by E-mail** button which takes you to the page describing e-mail delivery of reports. Finally, click on **Go to the Subscription Page** and follow the instructions.

PRINTED REPORTS OR DATA PRODUCTS

CALL OUR TOLL-FREE ORDER DESK: 800-999-6779 (U.S. and Canada)
Other areas, please call 703-605-6220 FAX: 703-605-6900
(Visa, MasterCard, check, or money order acceptable for payment.)

ASSISTANCE

For **assistance** with general agricultural statistics or further information about NASS or its products or services, contact the **Agricultural Statistics Hotline** at **800-727-9540**, 7:30 a.m. to 4:00 p.m. ET, or e-mail: nass@nass.usda.gov.
