

Released April 5, 2004, by the National Agricultural Statistics Service (NASS), Agricultural Statistics Board, U.S. Department of Agriculture. For information on "Dairy Products" call Kevin Pautler at (202) 720-9168, office hours 7:30 a.m. to 4:00 p.m. ET.

## February 2004 Highlights

**Total cheese** output (excluding cottage cheese) was 701 million pounds, 7.2 percent above February 2003 but 4.8 percent below January 2004.

**American type cheese** production totaled 299 million pounds, 4.6 percent above February 2003 but 7.0 percent below January 2004.

**Butter** production was 106 million pounds in February, 17.6 percent below February 2003 and 19.8 percent below January 2004.

**Frozen dessert:** (comparisons with February 2003)

Ice cream, Regular (hard) --- 65.7 million gallons, down 7.0 percent.

Ice cream, Lowfat (total) --- 27.5 million gallons, up 6.3 percent.

Ice cream, Nonfat (hard) --- 1.54 million gallons, down 9.1 percent.

Sherbet (hard) --- 4.04 million gallons, down 8.3 percent.

Frozen Yogurt (total) --- 4.64 million gallons, down 15.7 percent.

**Nonfat dry milk for human food:** (compared with February 2003) --- 110 million pounds, down 16.0 percent.

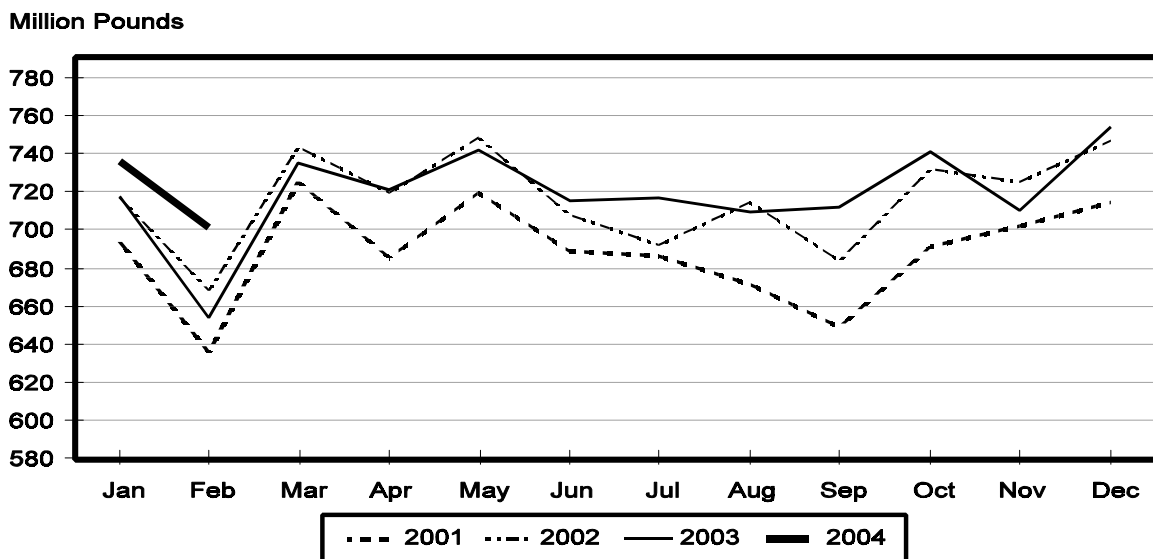
**Dry whey products:** (comparisons with February 2003)

Dry whey, human --- 77.5 million pounds, down 7.8 percent.

Dry whey, animal --- 7.27 million pounds, up 57.2 percent.

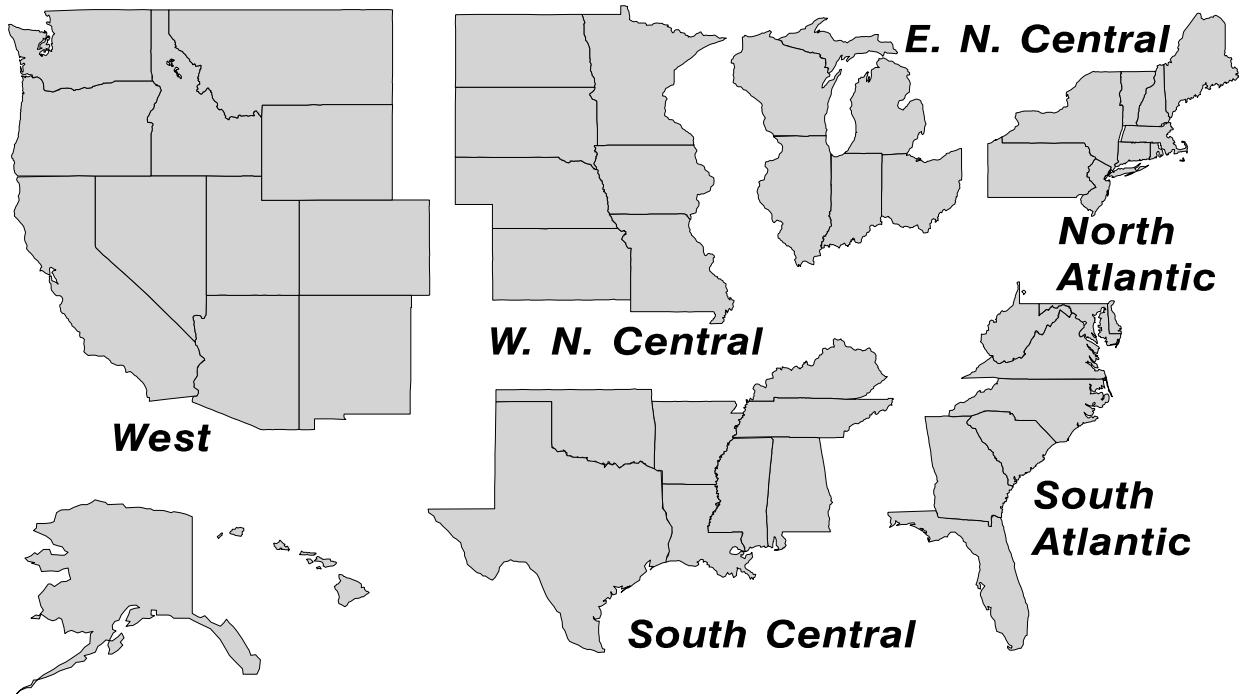
Dry whey, total --- 84.8 million pounds, down 4.4 percent.

## Total Cheese Production United States



## U. S. Geographic Regions Dairy Products

State totals are not published when fewer than 3 firms have reported or one firm comprises more than 60 percent of the State total. If we are not able to publish a region for confidentiality reasons, it will be combined with other regions when possible. For example, if North Atlantic can not be published, then it will be combined with South Atlantic to publish Atlantic. The West North Central and East North Central will be combined, if necessary, to form North Central. In the event that neither could be published, they may be combined with South Central to publish Central. Some tables will have only limited regions shown, therefore the regions may not add to the United States total.



**Dairy Products: Production by Product,  
United States, February, 2003-2004**

Product	Feb 2003	Jan 2004 <sup>1</sup>	Feb 2004	Change From	
				Feb 2003	Jan 2004
	<i>1,000 Pounds</i>	<i>1,000 Pounds</i>	<i>1,000 Pounds</i>	<i>Percent</i>	<i>Percent</i>
Butter	128,362	131,859	105,739	-17.6	-19.8
Cheese					
American Types <sup>2</sup>	285,649	321,380	298,807	4.6	-7.0
Cheddar	218,823	244,808	225,206	2.9	-8.0
Swiss	20,369	22,997	21,577	5.9	-6.2
Brick and Muenster	6,625	6,812	5,460	-17.6	-19.8
Cream and Neufchatel	44,172	48,209	49,324	11.7	2.3
Hispanic	9,371	10,333	10,924	16.6	5.7
Mozzarella	218,084	244,677	236,598	8.5	-3.3
Other Italian Types	54,532	62,369	57,933	6.2	-7.1
Total Italian Types	272,616	307,046	294,531	8.0	-4.1
All Other Types	14,714	19,074	20,073	36.4	5.2
Total	653,516	735,851	700,696	7.2	-4.8
Cottage Cheese, Curd <sup>3</sup>	32,433	38,294	36,140	11.4	-5.6
Cottage Cheese, Cream <sup>4</sup>	29,155	31,897	30,683	5.2	-3.8
Cottage Cheese, Lowfat <sup>5</sup>	29,345	31,839	30,942	5.4	-2.8
Canned Evaporated and Condensed Whole Milk	35,666	37,749	38,382	7.6	1.7
Dry Whole Milk	2,601	4,238	4,291	65.0	1.3
Nonfat Dry Milk, Human	130,355	120,490	109,510	-16.0	-9.1
Dry Skim Milk, Animal	463	442	325	-29.8	-26.5
Dry Buttermilk	6,416	5,918	5,260	-18.0	-11.1
Sour Cream	64,282	76,004	73,284	14.0	-3.6
Yogurt, Plain & Flavored	179,026	214,984	199,329	11.3	-7.3
	<i>1,000 Gallons</i>	<i>1,000 Gallons</i>	<i>1,000 Gallons</i>	<i>Percent</i>	<i>Percent</i>
Frozen Products					
Ice Cream, Hard	70,615	59,132	65,693	-7.0	11.1
Ice Cream, Lowfat, Hard	8,413	7,487	8,322	-1.1	11.2
Ice Cream, Lowfat, Soft	17,440	18,460	19,155	9.8	3.8
Ice Cream, Lowfat, Total	25,853	25,947	27,477	6.3	5.9
Ice Cream, Nonfat, Hard	1,689	1,430	1,536	-9.1	7.4
Sherbet, Hard	4,406	3,766	4,042	-8.3	7.3
Water and Juice Ices	5,133	4,675	4,876	-5.0	4.3
Frozen Yogurt, Total	5,505	4,403	4,641	-15.7	5.4
Regular & Lowfat, Hard	1,886	1,518	1,615	-14.4	6.4
Nonfat, Hard	976	813	895	-8.3	10.1
Other Frozen Dairy Products	680	594	542	-20.3	-8.8
Mix for Frozen Products					
Ice Cream Mix	40,966	34,788	37,945	-7.4	9.1
Ice Cream, Lowfat, Mix	14,281	14,370	15,202	6.4	5.8
Ice Cream, Nonfat, Mix	1,187	930	1,165	-1.9	25.3
Sherbet Mix	3,187	2,599	3,008	-5.6	15.7
Yogurt Mix	3,238	2,590	2,730	-15.7	5.4

<sup>1</sup> Revised.

<sup>2</sup> Includes Cheddar, Colby, Monterey, and Jack.

<sup>3</sup> Mostly used for processing into cream or lowfat cottage cheese.

<sup>4</sup> Fat content 4 percent or more.

<sup>5</sup> Fat content less than 4 percent.

**Whey and Modified Whey Products: Production, Stocks,  
and Prices, United States, February, 2003-2004**

Product	Feb 2003	Jan 2004 <sup>1</sup>	Feb 2004	Change From	
				Feb 2003	Jan 2004
<b>Production</b>					
	<i>1,000 Pounds</i>	<i>1,000 Pounds</i>	<i>1,000 Pounds</i>	<i>Percent</i>	<i>Percent</i>
Condensed Whey, Solids Content <sup>2</sup>					
Sweet-Type, Human	8,919	8,584	8,377	-6.1	-2.4
Dry Whey Products					
Dry Whey, Human	84,087	79,780	77,543	-7.8	-2.8
Dry Whey, Animal	4,625	7,293	7,270	57.2	-0.3
Dry Whey, Total	88,712	87,073	84,813	-4.4	-2.6
Reduced Lactose and Minerals					
Human Food	4,104	3,356	3,034	-26.1	-9.6
Animal Feed	3,249	3,627	3,836	18.1	5.8
Lactose, Human and Animal	48,273	56,164	54,383	12.7	-3.2
Whey					
Solids in Wet Blends, Animal <sup>3</sup>					
Protein Concentrate, Human <sup>7</sup>	30,484	27,302	24,679	-19.0	-9.6
Protein Concentrate, Animal <sup>7</sup>	3,031	3,335	3,424	13.0	2.7
<b>Manufacturers' Stocks End-of-Month <sup>4</sup></b>					
	<i>1,000 Pounds</i>	<i>1,000 Pounds</i>	<i>1,000 Pounds</i>	<i>Percent</i>	<i>Percent</i>
Dry Whey Products					
Dry Whey, Human	36,631	41,418	34,747	-5.1	-16.1
Dry Whey, Animal	1,653	6,869	5,720	246.0	-16.7
Reduced Lactose and Minerals					
Human and Animal <sup>5</sup>	11,782	6,942	7,202	-38.9	3.7
Lactose, Human and Animal	39,694	49,862	50,565	27.4	1.4
Whey Protein Concentrate, Human <sup>7</sup>	22,650	25,059	23,218	2.5	-7.3
Whey Protein Concentrate, Animal <sup>7</sup>	1,790	3,238	3,607	101.5	11.4
<b>Manufacturers' Selling Price <sup>6</sup></b>					
	<i>Cents per Pound</i>	<i>Cents per Pound</i>	<i>Cents per Pound</i>	<i>Cents Change</i>	<i>Cents Change</i>
Dry Whey, Animal	14.5	17.4	15.9	1.4	-1.5

<sup>1</sup> Revised.

<sup>2</sup> Final marketable product only. Does not include quantity used or shipped to another plant for further processing into dry whey or modified whey products. Does not include sweet-type, animal whey.

<sup>3</sup> Not shown when fewer than three plants reported or individual plant operations could be disclosed.

<sup>4</sup> Stocks held by manufacturers at all points and in transit.

<sup>5</sup> Reduced lactose and minerals stocks combined to avoid disclosure of individual operations.

<sup>6</sup> Prices for bulk goods, f.o.b. plant. Average monthly prices reported by firms.

<sup>7</sup> Whey Protein Concentrate, 25.0 to 89.9 percent.

**Dairy Products: Production by Product and Month,  
United States, 2003-2004 <sup>1</sup>**

Product and Month	By Month			Cumulative		
	2003	2004	Change From 2003	2003	2004	Change From 2003
	<i>1,000 Pounds</i>	<i>1,000 Pounds</i>	<i>Percent</i>	<i>1,000 Pounds</i>	<i>1,000 Pounds</i>	<i>Percent</i>
Total Cheese <sup>3</sup>						
Jan	717,763	735,851	2.5	717,763	735,851	2.5
Feb	653,516	700,696	7.2	1,371,279	1,436,547	4.8
Mar	735,370			2,106,649		
Apr	721,438			2,828,087		
May	742,179			3,570,266		
Jun	714,533			4,284,799		
Jul	717,211			5,002,010		
Aug	709,043			5,711,053		
Sep	712,108			6,423,161		
Oct	741,368			7,164,529		
Nov	710,378			7,874,907		
Dec	754,202			8,629,109		
American Cheese						
Jan	319,517	321,380	0.6	319,517	321,380	0.6
Feb	285,649	298,807	4.6	605,166	620,187	2.5
Mar	318,491			923,657		
Apr	308,599			1,232,256		
May	320,185			1,552,441		
Jun	307,233			1,859,674		
Jul	306,545			2,166,219		
Aug	302,139			2,468,358		
Sep	290,065			2,758,423		
Oct	304,497			3,062,920		
Nov	293,171			3,356,091		
Dec	319,392			3,675,483		
Cheddar Cheese						
Jan	247,786	244,808	-1.2	247,786	244,808	-1.2
Feb	218,823	225,206	2.9	466,609	470,014	0.7
Mar	242,232			708,841		
Apr	234,713			943,554		
May	240,929			1,184,483		
Jun	231,985			1,416,468		
Jul	231,588			1,648,056		
Aug	227,936			1,875,992		
Sep	214,132			2,090,124		
Oct	221,082			2,311,206		
Nov	215,013			2,526,219		
Dec	239,932			2,766,151		

See footnote(s) at end of table.

--continued

**Dairy Products: Production by Product and Month,  
United States, 2003-2004 <sup>1</sup> (continued)**

Product and Month	By Month			Cumulative		
	2003	2004	Change From 2003	2003	2004	Change From 2003
	<i>1,000 Pounds</i>	<i>1,000 Pounds</i>	<i>Percent</i>	<i>1,000 Pounds</i>	<i>1,000 Pounds</i>	<i>Percent</i>
Italian Cheese <sup>3</sup>						
Jan	293,345	307,046	4.7	293,345	307,046	4.7
Feb	272,616	294,531	8.0	565,961	601,577	6.3
Mar	305,440			871,401		
Apr	303,372			1,174,773		
May	307,923			1,482,696		
Jun	293,488			1,776,184		
Jul	292,661			2,068,845		
Aug	291,828			2,360,673		
Sep	290,995			2,651,668		
Oct	298,592			2,950,260		
Nov	288,386			3,238,646		
Dec	312,423			3,551,069		
Mozzarella						
Jan	232,355	244,677	5.3	232,355	244,677	5.3
Feb	218,084	236,598	8.5	450,439	481,275	6.8
Mar	243,230			693,669		
Apr	242,905			936,574		
May	252,404			1,188,978		
Jun	237,956			1,426,934		
Jul	235,700			1,662,634		
Aug	235,603			1,898,237		
Sep	229,124			2,127,361		
Oct	233,677			2,361,038		
Nov	229,590			2,590,628		
Dec	248,086			2,838,714		
Other Italian						
Jan	60,990	62,369	2.3	60,990	62,369	2.3
Feb	54,532	57,933	6.2	115,522	120,302	4.1
Mar	62,210			177,732		
Apr	60,467			238,199		
May	55,519			293,718		
Jun	55,532			349,250		
Jul	56,961			406,211		
Aug	56,225			462,436		
Sep	61,871			524,307		
Oct	64,915			589,222		
Nov	58,796			648,018		
Dec	64,337			712,355		

See footnote(s) at end of table.

--continued

**Dairy Products: Production by Product and Month,  
United States, 2003-2004<sup>1</sup> (continued)**

Product and Month	By Month			Cumulative		
	2003	2004	Change From 2003	2003	2004	Change From 2003
	<i>1,000 Pounds</i>	<i>1,000 Pounds</i>	<i>Percent</i>	<i>1,000 Pounds</i>	<i>1,000 Pounds</i>	<i>Percent</i>
Butter						
Jan	141,440	131,859	-6.8	141,440	131,859	-6.8
Feb	128,362	105,739	-17.6	269,802	237,598	-11.9
Mar	126,338			396,140		
Apr	122,715			518,855		
May	114,678			633,533		
Jun	83,836			717,369		
Jul	79,546			796,915		
Aug	70,144			867,059		
Sep	73,091			940,150		
Oct	97,040			1,037,190		
Nov	87,976			1,125,166		
Dec	114,390			1,239,556		
Nonfat Dry Milk, Human						
Jan	133,758	120,490	-9.9	133,758	120,490	-9.9
Feb	130,355	109,510	-16.0	264,113	230,000	-12.9
Mar	146,276			410,389		
Apr	150,404			560,793		
May	154,168			714,961		
Jun	130,791			845,752		
Jul	121,976			967,728		
Aug	100,673			1,068,401		
Sep	88,498			1,156,899		
Oct	99,018			1,255,917		
Nov	103,434			1,359,351		
Dec	132,214			1,491,565		
Total Dry Whey <sup>2</sup>						
Jan	97,664	87,073	-10.8	97,664	87,073	-10.8
Feb	88,712	84,813	-4.4	186,376	171,886	-7.8
Mar	101,088			287,464		
Apr	95,034			382,498		
May	100,893			483,391		
Jun	95,163			578,554		
Jul	96,848			675,402		
Aug	90,569			765,971		
Sep	87,450			853,421		
Oct	88,707			942,128		
Nov	81,010			1,023,138		
Dec	90,201			1,113,339		

See footnote(s) at end of table.

--continued

**Dairy Products: Production by Product and Month,  
United States, 2003-2004<sup>1</sup> (continued)**

Product and Month	By Month			Cumulative		
	2003	2004	Change From 2003	2003	2004	Change From 2003
	<i>1,000 Pounds</i>	<i>1,000 Pounds</i>	<i>Percent</i>	<i>1,000 Pounds</i>	<i>1,000 Pounds</i>	<i>Percent</i>
Cream Cottage Cheese						
Jan	31,386	31,897	1.6	31,386	31,897	1.6
Feb	29,155	30,683	5.2	60,541	62,580	3.4
Mar	31,991			92,532		
Apr	33,949			126,481		
May	32,767			159,248		
Jun	32,392			191,640		
Jul	34,497			226,137		
Aug	33,123			259,260		
Sep	32,462			291,722		
Oct	31,740			323,462		
Nov	27,933			351,395		
Dec	28,793			380,188		
Lowfat Cottage Cheese						
Jan	30,397	31,839	4.7	30,397	31,839	4.7
Feb	29,345	30,942	5.4	59,742	62,781	5.1
Mar	32,459			92,201		
Apr	33,234			125,435		
May	32,398			157,833		
Jun	31,767			189,600		
Jul	33,036			222,636		
Aug	33,417			256,053		
Sep	31,629			287,682		
Oct	32,950			320,632		
Nov	29,202			349,834		
Dec	28,652			378,486		
	<i>1,000 Gallons</i>	<i>1,000 Gallons</i>	<i>Percent</i>	<i>1,000 Gallons</i>	<i>1,000 Gallons</i>	<i>Percent</i>
Ice Cream, Hard						
Jan	67,337	59,132	-12.2	67,337	59,132	-12.2
Feb	70,615	65,693	-7.0	137,952	124,825	-9.5
Mar	73,595			211,547		
Apr	79,402			290,949		
May	79,138			370,087		
Jun	83,405			453,492		
Jul	82,942			536,434		
Aug	75,830			612,264		
Sep	71,799			684,063		
Oct	68,751			752,814		
Nov	57,908			810,722		
Dec	54,399			865,121		

See footnote(s) at end of table.

--continued



**Dairy Products: Production by Product and Month,  
United States, 2003-2004<sup>1</sup> (continued)**

Product and Month	By Month			Cumulative		
	2003	2004	Change From 2003	2003	2004	Change From 2003
	<i>1,000 Gallons</i>	<i>1,000 Gallons</i>	<i>Percent</i>	<i>1,000 Gallons</i>	<i>1,000 Gallons</i>	<i>Percent</i>
<b>Ice Cream, Lowfat</b>						
Jan	25,274	25,947	2.7	25,274	25,947	2.7
Feb	25,853	27,477	6.3	51,127	53,424	4.5
Mar	35,416			86,543		
Apr	37,557			124,100		
May	40,445			164,545		
Jun	42,666			207,211		
Jul	42,117			249,328		
Aug	38,545			287,873		
Sep	32,377			320,250		
Oct	30,584			350,834		
Nov	24,706			375,540		
Dec	26,549			402,089		
<b>Ice Cream, NF, Hard</b>						
Jan	1,584	1,430	-9.7	1,584	1,430	-9.7
Feb	1,689	1,536	-9.1	3,273	2,966	-9.4
Mar	1,580			4,853		
Apr	1,908			6,761		
May	1,875			8,636		
Jun	1,935			10,571		
Jul	1,935			12,506		
Aug	1,535			14,041		
Sep	1,553			15,594		
Oct	1,690			17,284		
Nov	1,439			18,723		
Dec	1,301			20,024		
<b>Sherbet, Hard</b>						
Jan	4,056	3,766	-7.1	4,056	3,766	-7.1
Feb	4,406	4,042	-8.3	8,462	7,808	-7.7
Mar	5,011			13,473		
Apr	5,438			18,911		
May	5,319			24,230		
Jun	5,835			30,065		
Jul	5,345			35,410		
Aug	4,699			40,109		
Sep	4,433			44,542		
Oct	4,079			48,621		
Nov	3,407			52,028		
Dec	3,389			55,417		

See footnote(s) at end of table.

--continued

**Dairy Products: Production by Product and Month,  
United States, 2003-2004<sup>1</sup> (continued)**

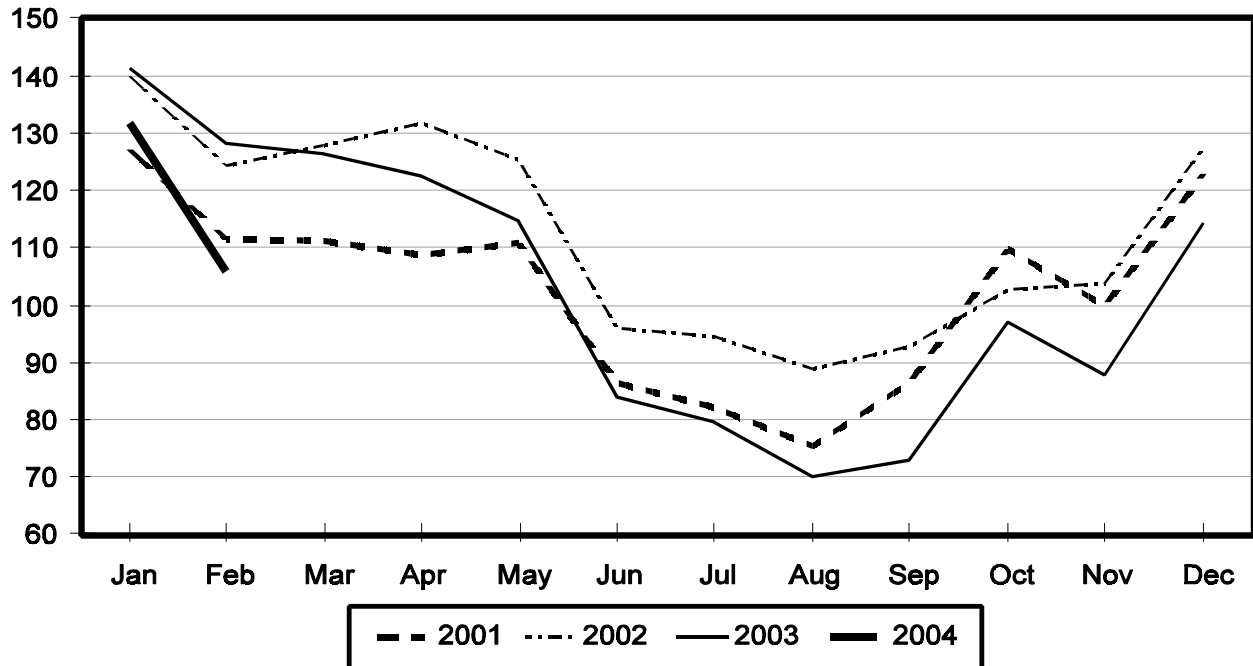
Product and Month	By Month			Cumulative		
	2003	2004	Change From 2003	2003	2004	Change From 2003
	<i>1,000 Gallons</i>	<i>1,000 Gallons</i>	<i>Percent</i>	<i>1,000 Gallons</i>	<i>1,000 Gallons</i>	<i>Percent</i>
Frozen Yogurt						
Jan	5,719	4,403	-23.0	5,719	4,403	-23.0
Feb	5,505	4,641	-15.7	11,224	9,044	-19.4
Mar	5,794			17,018		
Apr	6,370			23,388		
May	6,482			29,870		
Jun	5,906			35,776		
Jul	5,853			41,629		
Aug	5,610			47,239		
Sep	5,360			52,599		
Oct	4,879			57,478		
Nov	4,231			61,709		
Dec	4,043			65,752		

<sup>1</sup> January 2004 data revised.

<sup>2</sup> Excludes all modified dry whey products.

## Total Butter Production United States

Million Pounds



**Total Cheese, Excluding Cottage Cheese: Production by  
State and United States, February 2003-2004**

State	Feb 2003	Jan <sup>1</sup> 2004	Feb 2004	Change From	
				Feb 2003	Jan 2004
	<i>1,000 Pounds</i>	<i>1,000 Pounds</i>	<i>1,000 Pounds</i>	<i>Percent</i>	<i>Percent</i>
CA	133,298	167,708	158,139	18.6	-5.7
ID	44,558	55,836	55,759	25.1	-0.1
IL	7,540	7,060	7,073	-6.2	0.2
IA	23,480	13,145	11,714	-50.1	-10.9
MA	58	61	55	-5.2	-9.8
MN	50,362	52,694	48,255	-4.2	-8.4
MO	6,622	6,225	5,785	-12.6	-7.1
NY	52,491	58,162	55,870	6.4	-3.9
OH	13,009	15,706	14,031	7.9	-10.7
PA	27,706	30,795	31,326	13.1	1.7
SD	12,141	11,191	10,877	-10.4	-2.8
UT	4,856	4,641	5,351	10.2	15.3
WI	165,565	192,457	182,030	9.9	-5.4
Oth Sts <sup>2</sup>	111,830	120,170	114,431	2.3	-4.8
US	653,516	735,851	700,696	7.2	-4.8
N Atlantic	94,675	104,740	102,534	8.3	-2.1
S Atlantic	3,132	3,643	3,089	-1.4	-15.2
E N Central	199,979	227,232	216,923	8.5	-4.5
W N Central	99,318	87,085	80,016	-19.4	-8.1
S Central	6,917	7,448	7,319	5.8	-1.7
West	249,495	305,703	290,815	16.6	-4.9

<sup>1</sup> Revised.

<sup>2</sup> States not shown when fewer than 3 plants reported or individual plant operations could be disclosed. Percent change shown only when comparable States are included in the calculation.

**American Cheese: Production by State and United States, February 2003-2004**

State	Feb 2003	Jan <sup>1</sup> 2004	Feb 2004	Change From	
				Feb 2003	Jan 2004
	<i>1,000 Pounds</i>	<i>1,000 Pounds</i>	<i>1,000 Pounds</i>	<i>Percent</i>	<i>Percent</i>
CA	61,106	70,654	66,684	9.1	-5.6
ID	35,376	43,227	40,651	14.9	-6.0
IA	10,962	10,427	9,257	-15.6	-11.2
MN	48,970	50,561	46,185	-5.7	-8.7
NY	7,581	8,377	7,801	2.9	-6.9
OH	2,431	3,051	2,348	-3.4	-23.0
OR	7,418	8,320	7,813	5.3	-6.1
SD	6,130	7,028	6,705	9.4	-4.6
WI	63,400	73,200	68,700	8.4	-6.1
Oth Sts <sup>2</sup>	42,275	46,535	42,663	0.9	-8.3
US	285,649	321,380	298,807	4.6	-7.0
Atlantic	13,592	14,583	13,741	1.1	-5.8
E N Central	66,813	77,454	71,945	7.7	-7.1
W N Central	67,119	68,452	62,495	-6.9	-8.7
S Central	4,055	4,319	4,003	-1.3	-7.3
West	134,070	156,572	146,623	9.4	-6.4

<sup>1</sup> Revised.

<sup>2</sup> States not shown when fewer than 3 plants reported or individual plant operations could be disclosed. Percent change shown only when comparable States are included in the calculation.

**Cheddar Cheese: Production by State and United States, February 2003-2004**

State	Feb 2003	Jan <sup>1</sup> 2004	Feb 2004	Change From	
				Feb 2003	Jan 2004
	<i>1,000 Pounds</i>	<i>1,000 Pounds</i>	<i>1,000 Pounds</i>	<i>Percent</i>	<i>Percent</i>
CA	42,871	47,149	43,941	2.5	-6.8
ID	15,906	22,488	20,316	27.7	-9.7
MN	45,264	45,332	42,029	-7.1	-7.3
NY	7,519	8,286	7,799	3.7	-5.9
SD	4,867	4,957	3,823	-21.5	-22.9
WI	51,300	59,000	55,100	7.4	-6.6
Oth Sts <sup>2</sup>	51,096	57,596	52,198	2.2	-9.4
US	218,823	244,808	225,206	2.9	-8.0
Atlantic	12,975	13,976	13,425	3.5	-3.9
E N Cen	53,272	61,223	56,789	6.6	-7.2
W N Cen	57,115	57,603	52,580	-7.9	-8.7
S Cen	4,035	4,318	4,002	-0.8	-7.3
West	91,426	107,688	98,410	7.6	-8.6

<sup>1</sup> Revised.

<sup>2</sup> States not shown when fewer than 3 plants reported or individual plant operations could be disclosed. Percent change shown only when comparable States are included in the calculation.

**Mozzarella Cheese: Production by State and United States, February 2003-2004**

State	Feb 2003	Jan <sup>1</sup> 2004	Feb 2004	Change From	
				Feb 2003	Jan 2004
	<i>1,000 Pounds</i>	<i>1,000 Pounds</i>	<i>1,000 Pounds</i>	<i>Percent</i>	<i>Percent</i>
CA	55,649	75,671	68,911	23.8	-8.9
NY	16,226	17,059	14,871	-8.4	-12.8
PA	15,694	18,286	18,038	14.9	-1.4
WI	57,400	64,500	63,200	10.1	-2.0
Oth Sts <sup>2</sup>	73,115	69,161	71,578	-2.1	3.5
US	218,084	244,677	236,598	8.5	-3.3
Atlantic <sup>3</sup>	38,842	43,259	40,688	4.8	-5.9
E N Central	70,282	75,711	76,138	8.3	0.6
West	91,079	119,590	113,257	24.4	-5.3

<sup>1</sup> Revised.

<sup>2</sup> States not shown when fewer than 3 plants reported or individual plant operations could be disclosed. Percent change shown only when comparable States are included in the calculation.

<sup>3</sup> Region totals may not add to U.S. when compiled regions could not be disclosed.

**Butter: Production by State and United States, February 2003-2004**

State	Feb 2003	Jan <sup>1</sup> 2004	Feb 2004	Change From	
				Feb 2003	Jan 2004
	<i>1,000 Pounds</i>	<i>1,000 Pounds</i>	<i>1,000 Pounds</i>	<i>Percent</i>	<i>Percent</i>
CA	33,640	38,113	31,046	-7.7	-18.5
NY	2,368	2,445	2,294	-3.1	-6.2
PA	6,747	6,595	5,296	-21.5	-19.7
WI	34,700	34,372	26,200	-24.5	-23.8
Oth Sts <sup>2</sup>	50,907	50,334	40,903	-19.7	-18.7
US	128,362	131,859	105,739	-17.6	-19.8
N Atlantic <sup>3</sup>	13,090	13,350	10,522	-19.6	-21.2
E N Central	38,412	37,259	28,621	-25.5	-23.2
W N Central	12,508	12,699	10,126	-19.0	-20.3
West	48,247	54,531	45,702	-5.3	-16.2

<sup>1</sup> Revised.

<sup>2</sup> States not shown when fewer than 3 plants reported or individual plant operations could be disclosed. Percent change shown only when comparable States are included in the calculation.

<sup>3</sup> Region totals may not add to U.S. when compiled regions could not be disclosed.

**Nonfat Dry Milk, Human: Production by State  
and United States, February 2003-2004**

State	Feb 2003	Jan <sup>1</sup> 2004	Feb 2004	Change From	
				Feb 2003	Jan 2004
	<i>1,000 Pounds</i>	<i>1,000 Pounds</i>	<i>1,000 Pounds</i>	<i>Percent</i>	<i>Percent</i>
CA	61,993	62,058	58,472	-5.7	-5.8
ID	5,667	4,158	3,625	-36.0	-12.8
Oth Sts <sup>2</sup>	62,695	54,274	47,413	-24.4	-12.6
US	130,355	120,490	109,510	-16.0	-9.1
Atlantic	14,636	13,424	11,764	-19.6	-12.4
E N Central	4,447	2,234	1,163	-73.8	-47.9
W N Central	6,516	6,094	5,307	-18.6	-12.9
S Central	7,233	4,418	4,105	-43.2	-7.1
West	97,523	94,320	87,171	-10.6	-7.6

<sup>1</sup> Revised.

<sup>2</sup> States not shown when fewer than 3 plants reported or individual plant operations could be disclosed. Percent change shown only when comparable States are included in the calculation.

**Dry Whey, Human: Production by State  
and United States, February 2003-2004**

State	Feb 2003	Jan <sup>1</sup> 2004	Feb 2004	Change From	
				Feb 2003	Jan 2004
	<i>1,000 Pounds</i>	<i>1,000 Pounds</i>	<i>1,000 Pounds</i>	<i>Percent</i>	<i>Percent</i>
CA	11,019	9,910	9,160	-16.9	-7.6
MN	7,138	4,293	3,933	-44.9	-8.4
NY	8,937	9,943	10,099	13.0	1.6
PA	9,060	8,180	8,850	-2.3	8.2
WI	24,526	25,724	25,400	3.6	-1.3
Oth Sts <sup>2</sup>	23,407	21,730	20,101	-14.1	-7.5
US	84,087	79,780	77,543	-7.8	-2.8
Atlantic	17,997	18,123	18,949	5.3	4.6
Central	42,649	38,716	37,423	-12.3	-3.3
West	23,441	22,941	21,171	-9.7	-7.7

<sup>1</sup> Revised.

<sup>2</sup> States not shown when fewer than 3 plants reported or individual plant operations could be disclosed. Percent change shown only when comparable States are included in the calculation.

**Ice Cream, Hard: Production by State and United States, February 2003-2004**

State	Feb 2003	Jan <sup>1</sup> 2004	Feb 2004	Change From	
				Feb 2003	Jan 2004
	<i>1,000 Gallons</i>	<i>1,000 Gallons</i>	<i>1,000 Gallons</i>	<i>Percent</i>	<i>Percent</i>
CA	9,090	6,232	8,096	-10.9	29.9
FL	1,650	2,100	2,700	63.6	28.6
IL	2,564	2,777	3,000	17.0	8.0
IN	8,599	5,776	7,052	-18.0	22.1
MD	1,670	1,446	1,488	-10.9	2.9
MA	5,642	4,465	4,398	-22.0	-1.5
MI	1,536	1,451	1,250	-18.6	-13.9
MN	3,104	2,657	2,746	-11.5	3.3
MO	1,694	1,697	1,703	0.5	0.4
NY	2,300	2,000	2,250	-2.2	12.5
NC	1,233	1,368	1,195	-3.1	-12.6
OH	2,566	1,693	2,247	-12.4	32.7
OR	718	790	880	22.6	11.4
PA	2,584	2,952	2,915	12.8	-1.3
SD	2	3	3	50.0	
TN	1,480	1,056	1,121	-24.3	6.2
TX	4,013	3,685	3,809	-5.1	3.4
UT	1,181	1,321	1,309	10.8	-0.9
WA	1,142	698	901	-21.1	29.1
Oth Sts <sup>2</sup>	17,847	14,965	16,630	-6.8	11.1
US	70,615	59,132	65,693	-7.0	11.1
N Atlantic	12,871	12,004	12,070	-6.2	0.5
S Atlantic	5,970	6,079	6,766	13.3	11.3
E N Central	16,139	12,403	14,294	-11.4	15.2
W N Central	10,958	9,261	10,626	-3.0	14.7
S Central	8,668	7,693	7,898	-8.9	2.7
West	16,009	11,692	14,039	-12.3	20.1

<sup>1</sup> Revised.

<sup>2</sup> States not shown when fewer than 3 plants reported or individual plant operations could be disclosed. Percent change shown only when comparable States are included in the calculation.

**Canned Milk and Dry Milk Products: Manufacturers' Shipments,  
Stocks, and Selling Prices, February, 2003-2004**

Product	Feb 2003	Jan 2004 <sup>1</sup>	Feb 2004	Change From	
				Feb 2003	Jan 2004
	<b>Manufacturers' Shipments <sup>2</sup></b>				
	<i>1,000 Pounds</i>	<i>1,000 Pounds</i>	<i>1,000 Pounds</i>	<i>Percent</i>	<i>Percent</i>
Nonfat Dry Milk, Human	107,906	109,870	109,961	1.9	0.1
	<b>Manufacturers' Stocks End-of-Month <sup>3</sup></b>				
	<i>1,000 Pounds</i>	<i>1,000 Pounds</i>	<i>1,000 Pounds</i>	<i>Percent</i>	<i>Percent</i>
Canned Evaporated and Condensed Whole Milk	56,779	43,177	45,903	-19.2	6.3
Nonfat Dry Milk, Human	104,460	108,753	99,303	-4.9	-8.7
Dry Buttermilk, Total	9,027	4,898	4,940	-45.3	0.9

<sup>1</sup> Revised.

<sup>2</sup> For dry products, shipments of bulk goods only.

<sup>3</sup> Stocks held by manufacturers at all points and in transit.



**Procedures and Reliability:** Estimates included in this report are based on data provided each month by manufacturers of these products. In 32 States, the State Departments of Agriculture assist in collection of data, which eliminates duplicate reporting and reduces respondent burden. Data are collected by mail, personal and telephone interviews following the close of each month. There were 1,153 manufacturers that made one or more products in 2002. Each month, reports are generally received from all dairy plants in States with small numbers of plants. In States with large numbers of plants, survey procedures are designed to obtain monthly reports from all large plants and from a sample of small plants. Monthly estimates are based upon returns from about 70 percent of the plants which account for 70 to 90 percent of the total production of major dairy products.

**Revision Policy:** Monthly estimates are subject to revision the month following the preliminary estimates. Annual estimates are published in the "**Dairy Products**" report published each April which includes any revisions made to current and previous year. An attempt is made to get information from all plants for preparing these estimates.

The next "Dairy Products" report will be released at 3 p.m. ET on May 5, 2004.

The United States Department of Agriculture (USDA) prohibits discrimination in all its programs on the basis of race, color, national origin, gender, religion, age, disability, political beliefs, sexual orientation, and marital or family status. (Not all prohibited bases apply to all programs.) Persons with disabilities who require alternative means for communication of program information (braille, large print, audiotape, etc.) should contact the USDA's TARGET Center at 202-720-2600 (voice and TDD).

To file a complaint of discrimination, write USDA, Director, Office of Civil Rights, Room 326-W, Whitten Building, 1400 Independence Avenue, SW, Washington, D.C., 20250-9410, or call 202-720-5964 (voice or TDD). USDA is an equal opportunity provider and employer.

## ACCESS TO REPORTS!!

---

For your convenience, there are several ways to obtain NASS reports, data products, and services:

### INTERNET ACCESS

All NASS reports are available free of charge on the worldwide Internet. For access, connect to the Internet and go to the NASS Home Page at: [www.usda.gov/nass/](http://www.usda.gov/nass/). Select "Today's Reports" or Publications and then Reports Calendar or Publications and then Search, by Title or Subject.

### E-MAIL SUBSCRIPTION

All NASS reports are available by subscription free of charge direct to your e-mail address. Starting with the NASS Home Page at [www.usda.gov/nass/](http://www.usda.gov/nass/), click on **Publications**, then click on the **Subscribe by E-mail** button which takes you to the page describing e-mail delivery of reports. Finally, click on **Go to the Subscription Page** and follow the instructions.

-----

### PRINTED REPORTS OR DATA PRODUCTS

**CALL OUR TOLL-FREE ORDER DESK: 800-999-6779 (U.S. and Canada)**  
**Other areas, please call 703-605-6220      FAX: 703-605-6900**  
**(Visa, MasterCard, check, or money order acceptable for payment.)**

-----

### ASSISTANCE

For **assistance** with general agricultural statistics or further information about NASS or its products or services, contact the **Agricultural Statistics Hotline** at **800-727-9540**, 7:30 a.m. to 4:00 p.m. ET, or e-mail: [nass@nass.usda.gov](mailto:nass@nass.usda.gov).

---