

Released May 5, 2004, by the National Agricultural Statistics Service (NASS), Agricultural Statistics Board, U.S. Department of Agriculture. For information on *Dairy Products* call Kevin Pautler at (202) 720-9168, office hours 7:30 a.m. to 4:00 p.m. ET.

Update Alert

Pages 3 - 8: Corrected erroneous monthly product data for January 2004. These errant data also affected the Cumulative totals for January - March 2004, and the respective percent change from the previous year.

March 2004 Highlights

Total cheese output (excluding cottage cheese) was 779 million pounds, 6.6 percent above March 2003 and 10.6 percent above February 2004.

American type cheese production totaled 325 million pounds, 2.3 percent above March 2003 and 9.3 percent above February 2004.

Butter production was 97.7 million pounds in March, 22.7 percent below March 2003 and 7.7 percent below February 2004.

Frozen dessert: (comparisons with March 2003)

Ice cream, Regular (hard) --- 79.7 million gallons, up 5.3 percent.

Ice cream, Lowfat (total) --- 36.1 million gallons, up 22.0 percent.

Ice cream, Nonfat (hard) --- 1.70 million gallons, up 6.6 percent.

Sherbet (hard) --- 5.58 million gallons, up 19.2 percent.

Frozen Yogurt (total) --- 6.16 million gallons, up 6.2 percent.

Nonfat dry milk for human food: (compared with March 2003) --- 118 million pounds, down 24.0 percent.

Dry whey products: (comparisons with March 2003)

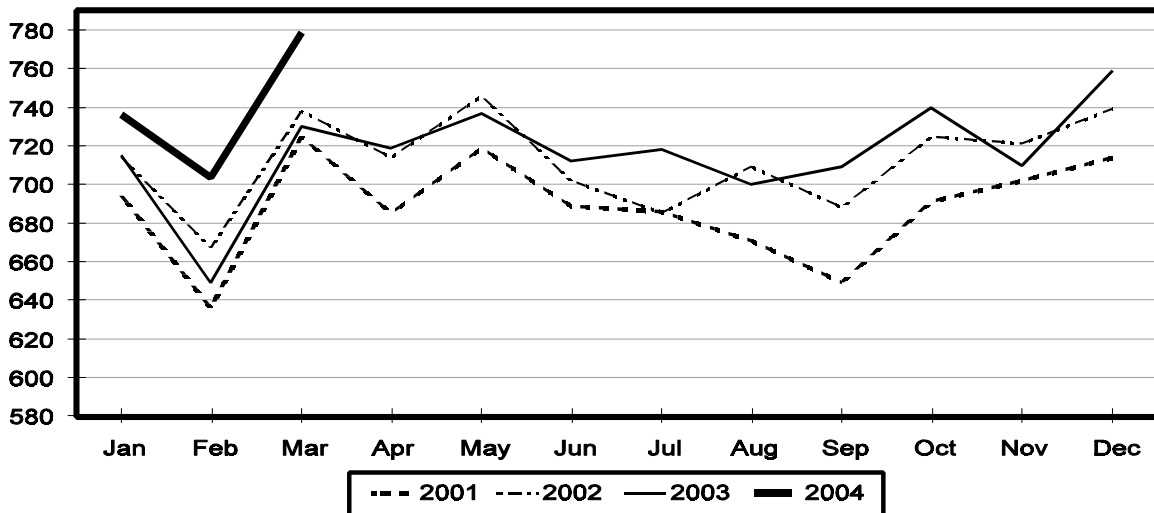
Dry whey, human --- 81.5 million pounds, down 10.7 percent.

Dry whey, animal --- 10.7 million pounds, up 46.5 percent.

Dry whey, total --- 92.1 million pounds, down 6.5 percent.

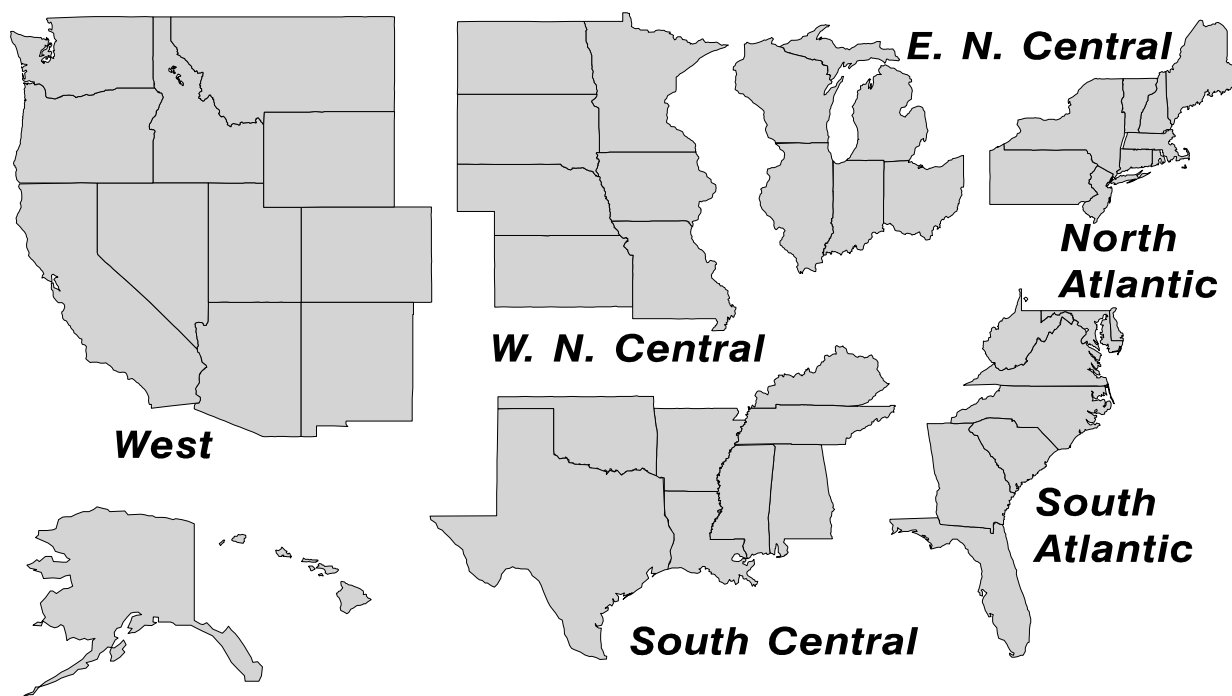
Total Cheese Production United States

Million Pounds



U. S. Geographic Regions Dairy Products

State totals are not published when fewer than 3 firms have reported or one firm comprises more than 60 percent of the State total. If we are not able to publish a region for confidentiality reasons, it will be combined with other regions when possible. For example, if North Atlantic can not be published, then it will be combined with South Atlantic to publish Atlantic. The West North Central and East North Central will be combined, if necessary, to form North Central. In the event that neither could be published, they may be combined with South Central to publish Central. Some tables will have only limited regions shown, therefore the regions may not add to the United States total.



Contents

Page

Dairy Products: Production by Product, United States, March 2003-2004	1
Whey and Modified Whey Products: Production, Stocks, and Prices, United States, March, 2003-2004	2
Dairy Products: Production by Product and Month, United States, 2003-2004	3
Select Commodities by State and United States, 2003-2004	9
Canned Milk and Dry Milk Products: Manufacturer's Shipments, Stocks, and Selling Prices, March 2003-2004	14
Procedures and Reliability	15

**Dairy Products: Production by Product,
United States, March, 2003-2004**

Product	Mar 2003	Feb 2004 ¹	Mar 2004	Change From	
				Mar 2003	Feb 2004
	<i>1,000 Pounds</i>	<i>1,000 Pounds</i>	<i>1,000 Pounds</i>	<i>Percent</i>	<i>Percent</i>
Butter	126,400	105,788	97,654	-22.7	-7.7
Cheese					
American Types ²	317,833	297,241	324,988	2.3	9.3
Cheddar	240,590	223,308	242,920	1.0	8.8
Swiss	21,274	21,586	24,079	13.2	11.5
Brick and Muenster	7,495	5,460	6,112	-18.5	11.9
Cream and Neufchatel	53,210	49,175	57,418	7.9	16.8
Hispanic	11,613	10,920	11,699	0.7	7.1
Mozzarella	237,475	240,013	261,805	10.2	9.1
Other Italian Types	62,308	59,488	68,239	9.5	14.7
Total Italian Types	299,783	299,501	330,044	10.1	10.2
All Other Types	19,079	20,405	24,482	28.3	20.0
Total	730,287	704,288	778,822	6.6	10.6
Cottage Cheese, Curd ³	37,736	36,223	42,585	12.8	17.6
Cottage Cheese, Cream ⁴	31,570	30,642	34,682	9.9	13.2
Cottage Cheese, Lowfat ⁵	32,003	30,591	34,974	9.3	14.3
Canned Evaporated and Condensed Whole Milk	51,696	38,382	47,310	-8.5	23.3
Dry Whole Milk	3,360	3,973	3,428	2.0	-13.7
Nonfat Dry Milk, Human	155,430	115,772	118,074	-24.0	2.0
Dry Skim Milk, Animal	375	325	316	-15.7	-2.8
Dry Buttermilk	5,744	5,288	4,387	-23.6	-17.0
Sour Cream	78,351	72,813	83,179	6.2	14.2
Yogurt, Plain & Flavored	218,168	209,761	234,357	7.4	11.7
	<i>1,000 Gallons</i>	<i>1,000 Gallons</i>	<i>1,000 Gallons</i>	<i>Percent</i>	<i>Percent</i>
Frozen Products					
Ice Cream, Hard	75,716	65,823	79,722	5.3	21.1
Ice Cream, Lowfat, Hard	8,775	8,212	10,605	20.9	29.1
Ice Cream, Lowfat, Soft	20,843	18,620	25,538	22.5	37.2
Ice Cream, Lowfat, Total	29,618	26,832	36,143	22.0	34.7
Ice Cream, Nonfat, Hard	1,593	1,482	1,698	6.6	14.6
Sherbet, Hard	4,683	3,973	5,584	19.2	40.5
Water and Juice Ices	5,873	4,876	5,665	-3.5	16.2
Frozen Yogurt, Total	5,803	4,973	6,164	6.2	23.9
Regular & Lowfat, Hard	1,795	1,612	1,785	-0.6	10.7
Nonfat, Hard	997	909	1,066	6.9	17.3
Other Frozen Dairy Products	608	578	757	24.5	31.0
Mix for Frozen Products					
Ice Cream Mix	44,474	37,903	46,314	4.1	22.2
Ice Cream, Lowfat, Mix	17,675	14,842	20,010	13.2	34.8
Ice Cream, Nonfat, Mix	1,128	1,123	1,127	-0.1	0.4
Sherbet Mix	3,294	3,019	3,811	15.7	26.2
Yogurt Mix	3,456	2,925	3,626	4.9	24.0

¹ Revised.

² Includes Cheddar, Colby, Monterey, and Jack.

³ Mostly used for processing into cream or lowfat cottage cheese.

⁴ Fat content 4 percent or more.

⁵ Fat content less than 4 percent.

**Whey and Modified Whey Products: Production, Stocks,
and Prices, United States, March, 2003-2004**

Product	Mar 2003	Feb 2004 ¹	Mar 2004	Change From	
				Mar 2003	Feb 2004
Production					
	<i>1,000 Pounds</i>	<i>1,000 Pounds</i>	<i>1,000 Pounds</i>	<i>Percent</i>	<i>Percent</i>
Condensed Whey, Solids Content ²					
Sweet-Type, Human	9,966	8,187	7,196	-27.8	-12.1
Dry Whey Products					
Dry Whey, Human	91,218	76,634	81,457	-10.7	6.3
Dry Whey, Animal	7,293	7,270	10,686	46.5	47.0
Dry Whey, Total	98,511	83,904	92,143	-6.5	9.8
Reduced Lactose and Minerals					
Human Food	1,993	3,171	4,295	115.5	35.4
Animal Feed	3,445	3,710	3,625	5.2	-2.3
Lactose, Human and Animal	49,323	51,301	55,917	13.4	9.0
Whey					
Protein Concentrate, Human ³	26,412	23,663	25,675	-2.8	8.5
Protein Concentrate, Animal ³	3,005	3,493	3,510	16.8	0.5
Manufacturers' Stocks End-of-Month ⁴					
	<i>1,000 Pounds</i>	<i>1,000 Pounds</i>	<i>1,000 Pounds</i>	<i>Percent</i>	<i>Percent</i>
Dry Whey Products					
Dry Whey, Human	44,147	32,652	31,727	-28.1	-2.8
Dry Whey, Animal	1,501	5,803	4,455	196.8	-23.2
Reduced Lactose and Minerals					
Human and Animal ⁵	10,502	7,041	7,117	-32.2	1.1
Lactose, Human and Animal	44,265	47,247	50,709	14.6	7.3
Whey Protein Concentrate, Human ³	27,663	23,142	19,918	-28.0	-13.9
Whey Protein Concentrate, Animal ³	1,767	3,607	2,307	30.6	-36.0
Manufacturers' Selling Price ⁶					
	<i>Cents per Pound</i>	<i>Cents per Pound</i>	<i>Cents per Pound</i>	<i>Cents Change</i>	<i>Cents Change</i>
Dry Whey, Animal	12.2	15.9	18.3	6.1	2.4

¹ Revised.

² Final marketable product only. Does not include quantity used or shipped to another plant for further processing into dry whey or modified whey products. Does not include sweet-type, animal whey.

³ Whey Protein Concentrate, 25.0 to 89.9 percent.

⁴ Stocks held by manufacturers at all points and in transit.

⁵ Reduced lactose and minerals stocks combined to avoid disclosure of individual operations.

⁶ Prices for bulk goods, f.o.b. plant. Average monthly prices reported by firms.

**Dairy Products: Production by Product and Month,
United States, 2003-2004 ¹**

Product and Month	By Month			Cumulative		
	2003	2004	Change From 2003	2003	2004	Change From 2003
	<i>1,000 Pounds</i>	<i>1,000 Pounds</i>	<i>Percent</i>	<i>1,000 Pounds</i>	<i>1,000 Pounds</i>	<i>Percent</i>
Total Cheese ³						
Jan	714,838	735,851	2.9	714,838	735,851	2.9
Feb	648,644	704,288	8.6	1,363,482	1,440,139	5.6
Mar	730,287	778,822	6.6	2,093,769	2,218,961	6.0
Apr	718,834			2,812,603		
May	737,027			3,549,630		
Jun	712,309			4,261,939		
Jul	718,258			4,980,197		
Aug	700,132			5,680,329		
Sep	708,708			6,389,037		
Oct	740,016			7,129,053		
Nov	710,036			7,839,089		
Dec	758,887			8,597,976		
American Cheese						
Jan	318,428	321,380	0.9	318,428	321,380	0.9
Feb	286,295	297,241	3.8	604,723	618,621	2.3
Mar	317,833	324,988	2.3	922,556	943,609	2.3
Apr	307,087			1,229,643		
May	319,462			1,549,105		
Jun	305,049			1,854,154		
Jul	306,675			2,160,829		
Aug	299,117			2,459,946		
Sep	292,222			2,752,168		
Oct	305,067			3,057,235		
Nov	291,085			3,348,320		
Dec	321,189			3,669,509		
Cheddar Cheese						
Jan	246,690	244,808	-0.8	246,690	244,808	-0.8
Feb	219,377	223,308	1.8	466,067	468,116	0.4
Mar	240,590	242,920	1.0	706,657	711,036	0.6
Apr	231,685			938,342		
May	239,124			1,177,466		
Jun	229,741			1,407,207		
Jul	229,870			1,637,077		
Aug	223,183			1,860,260		
Sep	214,603			2,074,863		
Oct	220,878			2,295,741		
Nov	212,629			2,508,370		
Dec	240,972			2,749,342		

See footnote(s) at end of table.

--continued

**Dairy Products: Production by Product and Month,
United States, 2003-2004 ¹ (continued)**

Product and Month	By Month			Cumulative		
	2003	2004	Change From 2003	2003	2004	Change From 2003
	<i>1,000 Pounds</i>	<i>1,000 Pounds</i>	<i>Percent</i>	<i>1,000 Pounds</i>	<i>1,000 Pounds</i>	<i>Percent</i>
Italian Cheese ³						
Jan	292,100	307,046	5.1	292,100	307,046	5.1
Feb	265,492	299,501	12.8	557,592	606,547	8.8
Mar	299,783	330,044	10.1	857,375	936,591	9.2
Apr	297,684			1,155,059		
May	302,565			1,457,624		
Jun	293,040			1,750,664		
Jul	293,823			2,044,487		
Aug	288,787			2,333,274		
Sep	287,912			2,621,186		
Oct	297,437			2,918,623		
Nov	289,184			3,207,807		
Dec	314,242			3,522,049		
Mozzarella						
Jan	231,028	244,677	5.9	231,028	244,677	5.9
Feb	211,519	240,013	13.5	442,547	484,690	9.5
Mar	237,475	261,805	10.2	680,022	746,495	9.8
Apr	236,320			916,342		
May	246,188			1,162,530		
Jun	236,757			1,399,287		
Jul	236,511			1,635,798		
Aug	232,518			1,868,316		
Sep	225,454			2,093,770		
Oct	232,061			2,325,831		
Nov	230,315			2,556,146		
Dec	249,953			2,806,099		
Other Italian						
Jan	61,072	62,369	2.1	61,072	62,369	2.1
Feb	53,973	59,488	10.2	115,045	121,857	5.9
Mar	62,308	68,239	9.5	177,353	190,096	7.2
Apr	61,364			238,717		
May	56,377			295,094		
Jun	56,283			351,377		
Jul	57,312			408,689		
Aug	56,269			464,958		
Sep	62,458			527,416		
Oct	65,376			592,792		
Nov	58,869			651,661		
Dec	64,289			715,950		

See footnote(s) at end of table.

--continued

**Dairy Products: Production by Product and Month,
United States, 2003-2004 ¹ (continued)**

Product and Month	By Month			Cumulative		
	2003	2004	Change From 2003	2003	2004	Change From 2003
	<i>1,000 Pounds</i>	<i>1,000 Pounds</i>	<i>Percent</i>	<i>1,000 Pounds</i>	<i>1,000 Pounds</i>	<i>Percent</i>
Butter						
Jan	141,912	131,859	-7.1	141,912	131,859	-7.1
Feb	128,086	105,788	-17.4	269,998	237,647	-12.0
Mar	126,400	97,654	-22.7	396,398	335,301	-15.4
Apr	122,844			519,242		
May	114,895			634,137		
Jun	84,169			718,306		
Jul	80,050			798,356		
Aug	70,916			869,272		
Sep	73,267			942,539		
Oct	96,784			1,039,323		
Nov	88,436			1,127,759		
Dec	114,599			1,242,358		
Nonfat Dry Milk, Human						
Jan	141,299	120,490	-14.7	141,299	120,490	-14.7
Feb	137,213	115,772	-15.6	278,512	236,262	-15.2
Mar	155,430	118,074	-24.0	433,942	354,336	-18.3
Apr	159,997			593,939		
May	163,883			757,822		
Jun	139,992			897,814		
Jul	127,915			1,025,729		
Aug	107,060			1,132,789		
Sep	96,774			1,229,563		
Oct	106,887			1,336,450		
Nov	110,865			1,447,315		
Dec	141,726			1,589,041		
Total Dry Whey ²						
Jan	95,268	87,073	-8.6	95,268	87,073	-8.6
Feb	86,466	83,904	-3.0	181,734	170,977	-5.9
Mar	98,511	92,143	-6.5	280,245	263,120	-6.1
Apr	92,801			373,046		
May	97,256			470,302		
Jun	92,410			562,712		
Jul	93,709			656,421		
Aug	87,643			744,064		
Sep	84,812			828,876		
Oct	86,176			915,052		
Nov	82,343			997,395		
Dec	88,948			1,086,343		

See footnote(s) at end of table.

--continued

**Dairy Products: Production by Product and Month,
United States, 2003-2004 ¹ (continued)**

Product and Month	By Month			Cumulative		
	2003	2004	Change From 2003	2003	2004	Change From 2003
	<i>1,000 Pounds</i>	<i>1,000 Pounds</i>	<i>Percent</i>	<i>1,000 Pounds</i>	<i>1,000 Pounds</i>	<i>Percent</i>
Cream Cottage Cheese						
Jan	32,071	31,897	-0.5	32,071	31,897	-0.5
Feb	29,246	30,642	4.8	61,317	62,539	2.0
Mar	31,570	34,682	9.9	92,887	97,221	4.7
Apr	33,847			126,734		
May	32,722			159,456		
Jun	33,694			193,150		
Jul	34,767			227,917		
Aug	34,175			262,092		
Sep	33,043			295,135		
Oct	32,276			327,411		
Nov	28,723			356,134		
Dec	29,042			385,176		
Lowfat Cottage Cheese						
Jan	31,263	31,839	1.8	31,263	31,839	1.8
Feb	29,543	30,591	3.5	60,806	62,430	2.7
Mar	32,003	34,974	9.3	92,809	97,404	5.0
Apr	32,910			125,719		
May	32,039			157,758		
Jun	30,301			188,059		
Jul	32,910			220,969		
Aug	33,182			254,151		
Sep	33,974			288,125		
Oct	33,398			321,523		
Nov	29,728			351,251		
Dec	28,782			380,033		
	<i>1,000 Gallons</i>	<i>1,000 Gallons</i>	<i>Percent</i>	<i>1,000 Gallons</i>	<i>1,000 Gallons</i>	<i>Percent</i>
Ice Cream, Hard						
Jan	69,795	59,132	-15.3	69,795	59,132	-15.3
Feb	70,821	65,823	-7.1	140,616	124,955	-11.1
Mar	75,716	79,722	5.3	216,332	204,677	-5.4
Apr	84,367			300,699		
May	80,900			381,599		
Jun	84,698			466,297		
Jul	84,507			550,804		
Aug	77,382			628,186		
Sep	73,398			701,584		
Oct	69,761			771,345		
Nov	59,530			830,875		
Dec	56,091			886,966		

See footnote(s) at end of table.

--continued

**Dairy Products: Production by Product and Month,
United States, 2003-2004 ¹ (continued)**

Product and Month	By Month			Cumulative		
	2003	2004	Change From 2003	2003	2004	Change From 2003
	<i>1,000 Gallons</i>	<i>1,000 Gallons</i>	<i>Percent</i>	<i>1,000 Gallons</i>	<i>1,000 Gallons</i>	<i>Percent</i>
Ice Cream, Lowfat						
Jan	23,544	25,947	10.2	23,544	25,947	10.2
Feb	24,272	26,832	10.5	47,816	52,779	10.4
Mar	29,618	36,143	22.0	77,434	88,922	14.8
Apr	32,249			109,683		
May	34,534			144,217		
Jun	36,902			181,119		
Jul	38,783			219,902		
Aug	33,504			253,406		
Sep	28,364			281,770		
Oct	27,413			309,183		
Nov	21,285			330,468		
Dec	22,466			352,934		
Ice Cream, NF, Hard						
Jan	1,440	1,430	-0.7	1,440	1,430	-0.7
Feb	1,382	1,482	7.2	2,822	2,912	3.2
Mar	1,593	1,698	6.6	4,415	4,610	4.4
Apr	1,830			6,245		
May	1,839			8,084		
Jun	1,865			9,949		
Jul	1,858			11,807		
Aug	1,478			13,285		
Sep	1,564			14,849		
Oct	1,681			16,530		
Nov	1,344			17,874		
Dec	1,097			18,971		
Sherbet, Hard						
Jan	3,986	3,766	-5.5	3,986	3,766	-5.5
Feb	4,311	3,973	-7.8	8,297	7,739	-6.7
Mar	4,683	5,584	19.2	12,980	13,323	2.6
Apr	5,011			17,991		
May	5,058			23,049		
Jun	5,582			28,631		
Jul	5,053			33,684		
Aug	4,552			38,236		
Sep	4,255			42,491		
Oct	3,697			46,188		
Nov	3,169			49,357		
Dec	3,209			52,566		

See footnote(s) at end of table.

--continued

**Dairy Products: Production by Product and Month,
United States, 2003-2004 ¹ (continued)**

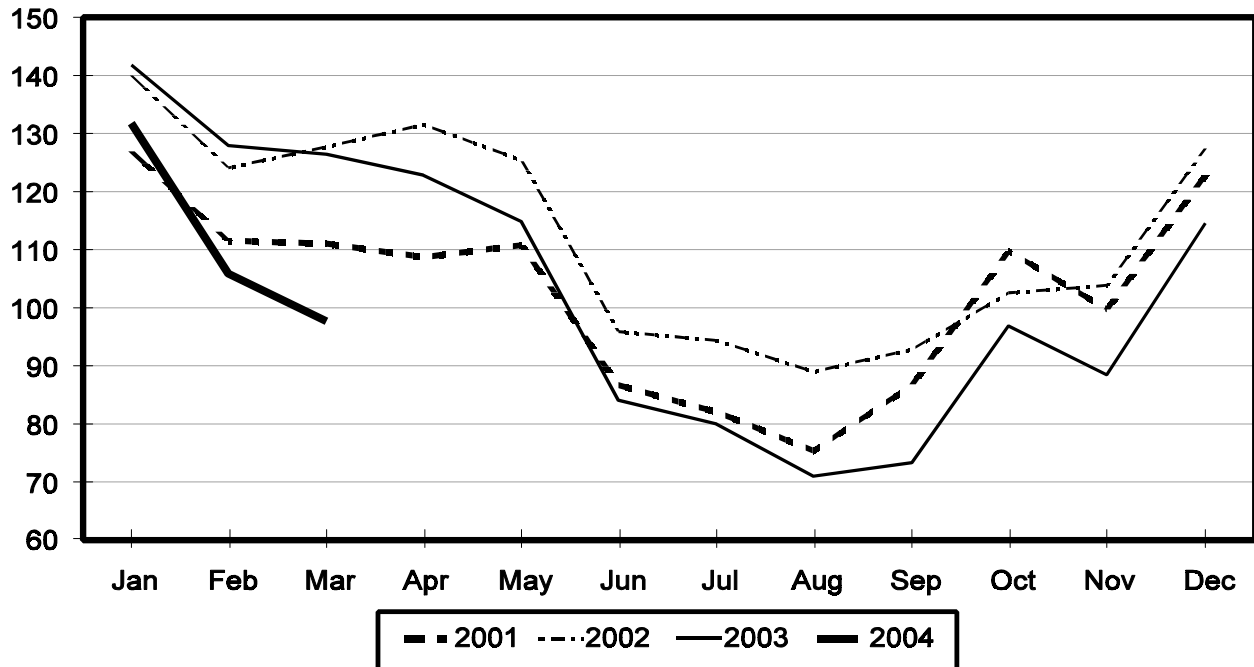
Product and Month	By Month			Cumulative		
	2003	2004	Change From 2003	2003	2004	Change From 2003
	<i>1,000 Gallons</i>	<i>1,000 Gallons</i>	<i>Percent</i>	<i>1,000 Gallons</i>	<i>1,000 Gallons</i>	<i>Percent</i>
Frozen Yogurt						
Jan	5,271	4,403	-16.5	5,271	4,403	-16.5
Feb	5,731	4,973	-13.2	11,002	9,376	-14.8
Mar	5,803	6,164	6.2	16,805	15,540	-7.5
Apr	7,025			23,830		
May	6,558			30,388		
Jun	6,211			36,599		
Jul	6,057			42,656		
Aug	5,953			48,609		
Sep	5,818			54,427		
Oct	5,282			59,709		
Nov	4,399			64,108		
Dec	3,916			68,024		

¹ February 2004 data revised.

² Excludes all modified dry whey products.

Total Butter Production United States

Million Pounds



**Total Cheese, Excluding Cottage Cheese: Production by
State and United States, March 2003-2004**

State	Mar 2003	Feb ¹ 2004	Mar 2004	Change From	
				Mar 2003	Feb 2004
	<i>1,000 Pounds</i>	<i>1,000 Pounds</i>	<i>1,000 Pounds</i>	<i>Percent</i>	<i>Percent</i>
CA	149,781	158,831	170,987	14.2	7.7
IL	8,578	7,073	8,162	-4.8	15.4
IA	15,180	11,714	13,145	-13.4	12.2
MA	80	40	46	-42.5	15.0
MN	56,886	48,875	53,770	-5.5	10.0
MO	8,339	5,785	7,965	-4.5	37.7
NY	61,398	55,863	66,732	8.7	19.5
OH	14,133	14,031	15,811	11.9	12.7
PA	31,648	31,326	35,624	12.6	13.7
SD	13,294	13,363	12,801	-3.7	-4.2
UT	5,659	5,351	6,092	7.7	13.8
WI	189,355	183,238	206,716	9.2	12.8
Oth Sts ²	175,956	168,798	180,971	2.9	7.2
US	730,287	704,288	778,822	6.6	10.6
N Atlantic	107,115	102,504	119,349	11.4	16.4
S Atlantic	3,224	3,147	3,194	-0.9	1.5
E N Central	226,948	218,126	243,694	7.4	11.7
W N Central	100,869	83,122	90,798	-10.0	9.2
S Central	8,574	7,319	8,629	0.6	17.9
West	283,557	290,070	313,158	10.4	8.0

¹ Revised.

² States not shown when fewer than 3 plants reported or individual plant operations could be disclosed. Percent change shown only when comparable States are included in the calculation.

American Cheese: Production by State and United States, March 2003-2004

State	Mar 2003	Feb ¹ 2004	Mar 2004	Change From	
				Mar 2003	Feb 2004
	<i>1,000 Pounds</i>	<i>1,000 Pounds</i>	<i>1,000 Pounds</i>	<i>Percent</i>	<i>Percent</i>
CA	68,295	66,684	69,711	2.1	4.5
ID	38,511	39,002	41,229	7.1	5.7
IA	12,027	9,257	10,361	-13.9	11.9
MN	55,326	46,248	51,948	-6.1	12.3
NY	8,002	7,801	7,775	-2.8	-0.3
OH	2,943	2,348	2,918	-0.8	24.3
OR	8,440	7,813	8,375	-0.8	7.2
SD	6,759	6,667	7,294	7.9	9.4
WI	71,199	68,700	75,600	6.2	10.0
Oth Sts ²	46,331	42,721	49,777	7.4	16.5
US	317,833	297,241	324,988	2.3	9.3
Atlantic	12,077	13,799	13,651	13.0	-1.1
E N Central	75,269	71,945	79,592	5.7	10.6
W N Central	75,116	62,520	70,030	-6.8	12.0
S Central	5,524	4,003	4,998	-9.5	24.9
West	149,847	144,974	156,717	4.6	8.1

¹ Revised.

² States not shown when fewer than 3 plants reported or individual plant operations could be disclosed. Percent change shown only when comparable States are included in the calculation.

Cheddar Cheese: Production by State and United States, March 2003-2004

State	Mar 2003	Feb ¹ 2004	Mar 2004	Change From	
				Mar 2003	Feb 2004
	<i>1,000 Pounds</i>	<i>1,000 Pounds</i>	<i>1,000 Pounds</i>	<i>Percent</i>	<i>Percent</i>
CA	44,984	43,941	44,064	-2.0	0.3
ID	17,162	18,667	18,446	7.5	-1.2
MN	51,556	41,760	47,518	-7.8	13.8
NY	7,905	7,799	7,773	-1.7	-0.3
SD	4,332	3,785	5,249	21.2	38.7
WI	57,608	55,100	59,900	4.0	8.7
Oth Sts ²	57,043	52,256	59,970	5.1	14.8
US	240,590	223,308	242,920	1.0	8.8
Atlantic	11,276	13,483	13,084	16.0	-3.0
E N Cen	60,036	56,789	62,043	3.3	9.3
W N Cen	63,380	52,273	60,224	-5.0	15.2
S Cen	5,523	4,002	4,998	-9.5	24.9
West	100,375	96,761	102,571	2.2	6.0

¹ Revised.

² States not shown when fewer than 3 plants reported or individual plant operations could be disclosed. Percent change shown only when comparable States are included in the calculation.

Mozzarella Cheese: Production by State and United States, March 2003-2004

State	Mar 2003	Feb ¹ 2004	Mar 2004	Change From	
				Mar 2003	Feb 2004
	<i>1,000 Pounds</i>	<i>1,000 Pounds</i>	<i>1,000 Pounds</i>	<i>Percent</i>	<i>Percent</i>
CA	61,059	69,638	77,206	26.4	10.9
NY	17,350	14,871	15,812	-8.9	6.3
PA	17,206	18,038	19,976	16.1	10.7
WI	65,372	63,200	72,200	10.4	14.2
Oth Sts ²	76,488	74,266	76,611	0.2	3.2
US	237,475	240,013	261,805	10.2	9.1
Atlantic ³	43,059	40,688	45,073	4.7	10.8
E N Central	79,301	76,138	84,215	6.2	10.6
West	103,626	113,984	125,007	20.6	9.7

¹ Revised.

² States not shown when fewer than 3 plants reported or individual plant operations could be disclosed. Percent change shown only when comparable States are included in the calculation.

³ Region totals may not add to U.S. when compiled regions could not be disclosed.

Butter: Production by State and United States, March 2003-2004

State	Mar 2003	Feb ¹ 2004	Mar 2004	Change From	
				Mar 2003	Feb 2004
	<i>1,000 Pounds</i>	<i>1,000 Pounds</i>	<i>1,000 Pounds</i>	<i>Percent</i>	<i>Percent</i>
CA	34,791	31,046	28,750	-17.4	-7.4
NY	2,338	2,294	2,048	-12.4	-10.7
PA	6,698	5,296	6,223	-7.1	17.5
WI	32,298	26,265	21,700	-32.8	-17.4
Oth Sts ²	50,275	40,887	38,933	-22.6	-4.8
US	126,400	105,788	97,654	-22.7	-7.7
N Atlantic ³	13,145	10,505	11,723	-10.8	11.6
E N Central	36,102	28,686	23,945	-33.7	-16.5
W N Central	10,175	10,126	8,940	-12.1	-11.7
West	50,263	45,702	41,666	-17.1	-8.8

¹ Revised.

² States not shown when fewer than 3 plants reported or individual plant operations could be disclosed. Percent change shown only when comparable States are included in the calculation.

³ Region totals may not add to U.S. when compiled regions could not be disclosed.

**Nonfat Dry Milk, Human: Production by State
and United States, March 2003-2004**

State	Mar 2003	Feb ¹ 2004	Mar 2004	Change From	
				Mar 2003	Feb 2004
	<i>1,000 Pounds</i>	<i>1,000 Pounds</i>	<i>1,000 Pounds</i>	<i>Percent</i>	<i>Percent</i>
CA	69,558	58,790	62,412	-10.3	6.2
ID	13,970	9,638	9,722	-30.4	0.9
Oth Sts ²	71,902	47,344	45,940	-36.1	-3.0
US	155,430	115,772	118,074	-24.0	2.0
Atlantic	16,612	11,764	11,045	-33.5	-6.1
E N Central	4,633	1,163	1,348	-70.9	15.9
W N Central	6,595	5,238	4,912	-25.5	-6.2
S Central	8,119	4,105	5,465	-32.7	33.1
West	119,471	93,502	95,304	-20.2	1.9

¹ Revised.

² States not shown when fewer than 3 plants reported or individual plant operations could be disclosed. Percent change shown only when comparable States are included in the calculation.

**Dry Whey, Human: Production by State
and United States, March 2003-2004**

State	Mar 2003	Feb ¹ 2004	Mar 2004	Change From	
				Mar 2003	Feb 2004
	<i>1,000 Pounds</i>	<i>1,000 Pounds</i>	<i>1,000 Pounds</i>	<i>Percent</i>	<i>Percent</i>
CA	11,708	9,160	9,074	-22.5	-0.9
MN	7,874	4,132	3,747	-52.4	-9.3
NY	9,423	10,099	10,279	9.1	1.8
PA	8,774	8,850	9,333	6.4	5.5
UT	2,489	1,758	1,578	-36.6	-10.2
WI	30,874	24,292	27,000	-12.5	11.1
Oth Sts ²	20,076	18,343	20,446	1.8	11.5
US	91,218	76,634	81,457	-10.7	6.3
Atlantic	18,197	18,949	19,612	7.8	3.5
Central	47,397	36,514	39,499	-16.7	8.2
West	25,624	21,171	22,346	-12.8	5.6

¹ Revised.

² States not shown when fewer than 3 plants reported or individual plant operations could be disclosed. Percent change shown only when comparable States are included in the calculation.

Ice Cream, Hard: Production by State and United States, March 2003-2004

State	Mar 2003	Feb ¹ 2004	Mar 2004	Change From	
				Mar 2003	Feb 2004
	<i>1,000 Gallons</i>	<i>1,000 Gallons</i>	<i>1,000 Gallons</i>	<i>Percent</i>	<i>Percent</i>
CA	10,697	8,090	11,892	11.2	47.0
FL	2,285	2,700	2,600	13.8	-3.7
IL	3,640	3,000	3,329	-8.5	11.0
IN	8,330	7,052	7,899	-5.2	12.0
MD	1,740	1,488	1,740		16.9
MA	5,212	4,370	3,882	-25.5	-11.2
MI	1,274	1,250	1,400	9.9	12.0
MN	4,172	2,746	4,303	3.1	56.7
MO	1,660	1,703	2,363	42.3	38.8
NY	2,539	2,250	3,100	22.1	37.8
NC	1,367	1,195	1,337	-2.2	11.9
OH	2,636	2,247	2,580	-2.1	14.8
OR	891	880	1,114	25.0	26.6
PA	3,584	2,915	3,247	-9.4	11.4
TN	1,535	1,121	1,534	-0.1	36.8
TX	4,000	3,809	3,883	-2.9	1.9
UT	1,220	1,309	1,778	45.7	35.8
Oth Sts ²	18,934	17,698	21,741	14.8	22.8
US	75,716	65,823	79,722	5.3	21.1
N Atlantic	13,940	12,005	13,020	-6.6	8.5
S Atlantic	6,928	6,766	7,045	1.7	4.1
E N Central	16,825	14,294	16,141	-4.1	12.9
W N Central	11,662	10,626	15,013	28.7	41.3
S Central	9,262	8,095	9,419	1.7	16.4
West	17,099	14,037	19,084	11.6	36.0

¹ Revised.

² States not shown when fewer than 3 plants reported or individual plant operations could be disclosed. Percent change shown only when comparable States are included in the calculation.

**Canned Milk and Dry Milk Products: Manufacturers' Shipments,
Stocks, and Selling Prices, March, 2003-2004**

Product	Mar 2003	Feb 2004 ¹	Mar 2004	Change From	
				Mar 2003	Feb 2004
	Manufacturers' Shipments ²				
	<i>1,000 Pounds</i>	<i>1,000 Pounds</i>	<i>1,000 Pounds</i>	<i>Percent</i>	<i>Percent</i>
Nonfat Dry Milk, Human	129,655	113,215	112,694	-13.1	-0.5
	Manufacturers' Stocks End-of-Month ³				
	<i>1,000 Pounds</i>	<i>1,000 Pounds</i>	<i>1,000 Pounds</i>	<i>Percent</i>	<i>Percent</i>
Canned Evaporated and Condensed Whole Milk	52,815	45,629	47,978	-9.2	5.1
Nonfat Dry Milk, Human	122,611	95,206	89,450	-27.0	-6.0
Dry Buttermilk, Total	9,239	5,274	6,108	-33.9	15.8

¹ Revised.

² For dry products, shipments of bulk goods only.

³ Stocks held by manufacturers at all points and in transit.

Procedures and Reliability: Estimates included in this report are based on data provided each month by manufacturers of these products. In 32 States, the State Departments of Agriculture assist in collection of data, which eliminates duplicate reporting and reduces respondent burden. Data are collected by mail, personal and telephone interviews following the close of each month. There were 1,126 manufacturers that made one or more products in 2003. Each month, reports are generally received from all dairy plants in States with small numbers of plants. In States with large numbers of plants, survey procedures are designed to obtain monthly reports from all large plants and from a sample of small plants. Monthly estimates are based upon returns from about 70 percent of the plants which account for 70 to 90 percent of the total production of major dairy products.

Revision Policy: Monthly estimates are subject to revision the month following the preliminary estimates. Annual estimates are published in the "**Dairy Products**" report published each April which includes any revisions made to current and previous year. An attempt is made to get information from all plants for preparing these estimates

Contact Information: For information on *Dairy Products* call Kevin Pautler at (202) 720-9168, office hours 7:30 a.m. to 4:00 p.m. ET.

The United States Department of Agriculture (USDA) prohibits discrimination in all its programs on the basis of race, color, national origin, gender, religion, age, disability, political beliefs, sexual orientation, and marital or family status. (Not all prohibited bases apply to all programs.) Persons with disabilities who require alternative means for communication of program information (braille, large print, audiotape, etc.) should contact the USDA's TARGET Center at 202-720-2600 (voice and TDD).

To file a complaint of discrimination, write USDA, Director, Office of Civil Rights, Room 326-W, Whitten Building, 1400 Independence Avenue, SW, Washington, D.C., 20250-9410, or call 202-720-5964 (voice or TDD). USDA is an equal opportunity provider and employer.

ACCESS TO REPORTS!!

For your convenience, there are several ways to obtain NASS reports, data products, and services:

INTERNET ACCESS

All NASS reports are available free of charge on the worldwide Internet. For access, connect to the Internet and go to the NASS Home Page at: www.usda.gov/nass/. Select "Today's Reports" or Publications and then Reports Calendar or Publications and then Search, by Title or Subject.

E-MAIL SUBSCRIPTION

All NASS reports are available by subscription free of charge direct to your e-mail address. Starting with the NASS Home Page at www.usda.gov/nass/, click on **Publications**, then click on the **Subscribe by E-mail** button which takes you to the page describing e-mail delivery of reports. Finally, click on **Go to the Subscription Page** and follow the instructions.

PRINTED REPORTS OR DATA PRODUCTS

CALL OUR TOLL-FREE ORDER DESK: 800-999-6779 (U.S. and Canada)
Other areas, please call 703-605-6220 FAX: 703-605-6900
(Visa, MasterCard, check, or money order acceptable for payment.)

ASSISTANCE

For **assistance** with general agricultural statistics or further information about NASS or its products or services, contact the **Agricultural Statistics Hotline** at **800-727-9540**, 7:30 a.m. to 4:00 p.m. ET, or e-mail: nass@nass.usda.gov.
