

Released June 4, 2004, by the National Agricultural Statistics Service (NASS), Agricultural Statistics Board, U.S. Department of Agriculture. For information on *Dairy Products* call Kevin Pautler at (202) 720-9168, office hours 7:30 a.m. to 4:00 p.m. ET.

April 2004 Highlights

Total cheese output (excluding cottage cheese) was 755 million pounds, 5.0 percent above April 2003 but 3.2 percent below March 2004.

American type cheese production totaled 320 million pounds, 4.3 percent above April 2003 but 1.2 percent below March 2004.

Butter production was 97.1 million pounds in April, 21.0 percent below April 2003 but slightly above March 2004.

Frozen dessert: (comparisons with April 2003)

Ice cream, Regular (hard) --- 77.1 million gallons, down 8.6 percent.

Ice cream, Lowfat (total) --- 39.0 million gallons, up 20.8 percent.

Ice cream, Nonfat (hard) --- 2.08 million gallons, up 13.7 percent.

Sherbet (hard) --- 5.18 million gallons, up 3.3 percent.

Frozen Yogurt (total) --- 6.04 million gallons, down 14.0 percent.

Nonfat dry milk for human food: (compared with April 2003) --- 134 million pounds, down 16.2 percent.

Dry whey products: (comparisons with April 2003)

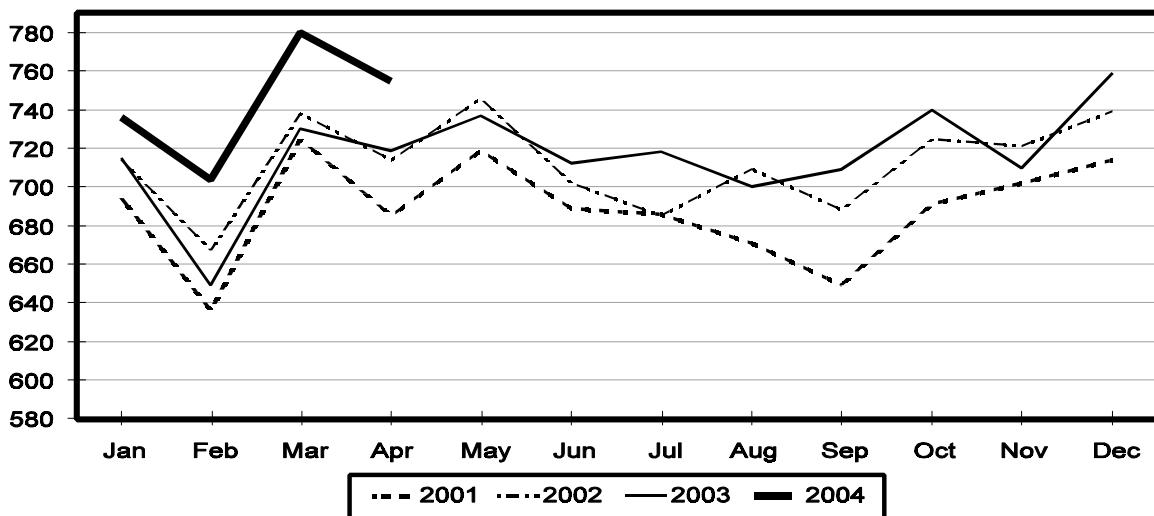
Dry whey, human --- 84.4 million pounds, down 1.5 percent.

Dry whey, animal --- 7.57 million pounds, up 6.4 percent.

Dry whey, total --- 92.0 million pounds, down 0.9 percent.

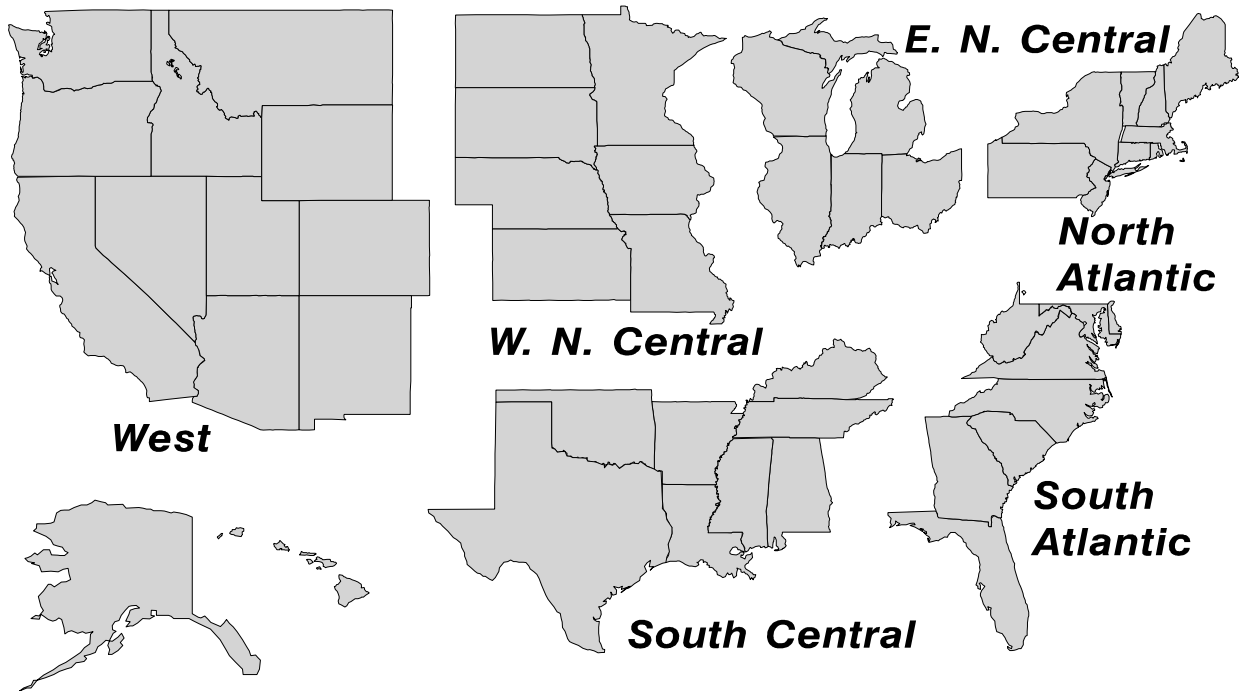
Total Cheese Production United States

Million Pounds



U. S. Geographic Regions Dairy Products

State totals are not published when fewer than 3 firms have reported or one firm comprises more than 60 percent of the State total. If we are not able to publish a region for confidentiality reasons, it will be combined with other regions when possible. For example, if North Atlantic can not be published, then it will be combined with South Atlantic to publish Atlantic. The West North Central and East North Central will be combined, if necessary, to form North Central. In the event that neither could be published, they may be combined with South Central to publish Central. Some tables will have only limited regions shown, therefore the regions may not add to the United States total.



Contents

Page

Dairy Products: Production by Product, United States, April 2003-2004	1
Whey and Modified Whey Products: Production, Stocks, and Prices, United States, April, 2003-2004	2
Dairy Products: Production by Product and Month, United States, 2003-2004	3
Select Commodities by State and United States, April, 2003-2004	9
Canned Milk and Dry Milk Products: Manufacturer's Shipments, Stocks, and Selling Prices, April, 2003-2004	13
Procedures and Reliability	14

**Dairy Products: Production by Product,
United States, April, 2003-2004**

Product	Apr 2003	Mar 2004 ¹	Apr 2004	Change From	
				Apr 2003	Mar 2004
	<i>1,000 Pounds</i>	<i>1,000 Pounds</i>	<i>1,000 Pounds</i>	<i>Percent</i>	<i>Percent</i>
Butter	122,844	96,741	97,082	-21.0	0.4
Cheese					
American Types ²	307,087	324,194	320,223	4.3	-1.2
Cheddar	231,685	241,804	241,178	4.1	-0.3
Swiss	21,037	24,079	24,306	15.5	0.9
Brick and Muenster	7,502	6,112	6,416	-14.5	5.0
Cream and Neufchatel	53,507	57,515	59,924	12.0	4.2
Hispanic	11,564	11,751	11,472	-0.8	-2.4
Mozzarella	236,320	262,896	249,710	5.7	-5.0
Other Italian Types	61,364	70,520	60,161	-2.0	-14.7
Total Italian Types	297,684	333,416	309,871	4.1	-7.1
All Other Types	20,453	22,532	22,578	10.4	0.2
Total	718,834	779,599	754,790	5.0	-3.2
Cottage Cheese, Curd ³	39,611	42,132	37,148	-6.2	-11.8
Cottage Cheese, Cream ⁴	33,847	34,940	31,247	-7.7	-10.6
Cottage Cheese, Lowfat ⁵	32,910	35,649	32,529	-1.2	-8.8
Canned Evaporated and Condensed Whole Milk	56,903	48,158	40,519	-28.8	-15.9
Dry Whole Milk	3,094	3,531	5,269	70.3	49.2
Nonfat Dry Milk, Human	159,997	118,018	134,027	-16.2	13.6
Dry Skim Milk, Animal	486	318	326	-32.9	2.5
Dry Buttermilk	5,653	4,256	5,039	-10.9	18.4
Sour Cream	80,349	84,322	76,555	-4.7	-9.2
Yogurt, Plain & Flavored	200,945	232,509	214,773	6.9	-7.6
	<i>1,000 Gallons</i>	<i>1,000 Gallons</i>	<i>1,000 Gallons</i>	<i>Percent</i>	<i>Percent</i>
Frozen Products					
Ice Cream, Hard	84,367	78,711	77,120	-8.6	-2.0
Ice Cream, Lowfat, Hard	9,128	10,642	11,384	24.7	7.0
Ice Cream, Lowfat, Soft	23,121	26,047	27,572	19.3	5.9
Ice Cream, Lowfat, Total	32,249	36,689	38,956	20.8	6.2
Ice Cream, Nonfat, Hard	1,830	1,693	2,081	13.7	22.9
Sherbet, Hard	5,011	5,609	5,178	3.3	-7.7
Water and Juice Ices	6,474	5,605	5,763	-11.0	2.8
Frozen Yogurt, Total	7,025	6,246	6,038	-14.0	-3.3
Regular & Lowfat, Hard	2,080	1,926	1,946	-6.4	1.0
Nonfat, Hard	1,182	1,067	1,028	-13.0	-3.7
Other Frozen Dairy Products	635	770	823	29.6	6.9
Mix for Frozen Products					
Ice Cream Mix	47,804	45,761	48,254	0.9	5.4
Ice Cream, Lowfat, Mix	19,328	20,317	21,569	11.6	6.2
Ice Cream, Nonfat, Mix	1,193	1,125	1,475	23.6	31.1
Sherbet Mix	3,566	3,850	3,586	0.6	-6.9
Yogurt Mix	3,761	3,674	3,552	-5.6	-3.3

¹ Revised.

² Includes Cheddar, Colby, Monterey, and Jack.

³ Mostly used for processing into cream or lowfat cottage cheese.

⁴ Fat content 4 percent or more.

⁵ Fat content less than 4 percent.

**Whey and Modified Whey Products: Production, Stocks,
and Prices, United States, April, 2003-2004**

Product	Apr 2003	Mar 2004 ¹	Apr 2004	Change From	
				Apr 2003	Mar 2004
Production					
	<i>1,000 Pounds</i>	<i>1,000 Pounds</i>	<i>1,000 Pounds</i>	<i>Percent</i>	<i>Percent</i>
Condensed Whey, Solids Content ² Sweet-Type, Human	9,389	7,196	7,193	-23.4	
Dry Whey Products					
Dry Whey, Human	85,689	83,542	84,411	-1.5	1.0
Dry Whey, Animal	7,112	10,203	7,567	6.4	-25.8
Dry Whey, Total	92,801	93,745	91,978	-0.9	-1.9
Reduced Lactose and Minerals					
Human Food	2,998	4,295	6,095	103.3	41.9
Animal Feed ³	3,498	3,625			
Lactose, Human and Animal	49,424	56,152	54,366	10.0	-3.2
Whey					
Protein Concentrate, Human ⁴	26,956	25,624	25,586	-5.1	-0.1
Protein Concentrate, Animal ⁴	3,015	3,896	3,715	23.2	-4.6
Manufacturers' Stocks End-of-Month ⁵					
	<i>1,000 Pounds</i>	<i>1,000 Pounds</i>	<i>1,000 Pounds</i>	<i>Percent</i>	<i>Percent</i>
Dry Whey Products					
Dry Whey, Human	45,536	30,575	32,460	-28.7	6.2
Dry Whey, Animal	1,464	4,455	3,924	168.0	-11.9
Reduced Lactose and Minerals					
Human and Animal ⁵	9,991	7,117	7,023	-29.7	-1.3
Lactose, Human and Animal	42,150	53,584	54,591	29.5	1.9
Whey Protein Concentrate, Human ⁴	28,278	21,312	17,298	-38.8	-18.8
Whey Protein Concentrate, Animal ⁴	1,712	2,509	1,648	-3.7	-34.3
Manufacturers' Selling Price ⁷					
	<i>Cents per Pound</i>	<i>Cents per Pound</i>	<i>Cents per Pound</i>	<i>Cents Change</i>	<i>Cents Change</i>
Dry Whey, Animal	11.8	18.3	25.6	13.8	7.3

¹ Revised.

² Final marketable product only. Does not include quantity used or shipped to another plant for further processing into dry whey or modified whey products. Does not include sweet-type, animal whey.

³ Not shown when fewer than 3 plants reported or individual plant operations could be disclosed.

⁴ Whey Protein Concentrate, 25.0 to 89.9 percent.

⁵ Stocks held by manufacturers at all points and in transit.

⁶ Reduced lactose and minerals stocks combined to avoid disclosure of individual operations.

⁷ Prices for bulk goods, f.o.b. plant. Average monthly prices reported by firms.

**Dairy Products: Production by Product and Month,
United States, 2003-2004 ¹**

Product and Month	By Month			Cumulative		
	2003	2004	Change From 2003	2003	2004	Change From 2003
	<i>1,000 Pounds</i>	<i>1,000 Pounds</i>	<i>Percent</i>	<i>1,000 Pounds</i>	<i>1,000 Pounds</i>	<i>Percent</i>
Total Cheese ³						
Jan	714,838	735,851	2.9	714,838	735,851	2.9
Feb	648,644	704,288	8.6	1,363,482	1,440,139	5.6
Mar	730,287	779,599	6.8	2,093,769	2,219,738	6.0
Apr	718,834	754,790	5.0	2,812,603	2,974,528	5.8
May	737,027			3,549,630		
Jun	712,309			4,261,939		
Jul	718,258			4,980,197		
Aug	700,132			5,680,329		
Sep	708,708			6,389,037		
Oct	740,016			7,129,053		
Nov	710,036			7,839,089		
Dec	758,887			8,597,976		
American Cheese						
Jan	318,428	321,380	0.9	318,428	321,380	0.9
Feb	286,295	297,241	3.8	604,723	618,621	2.3
Mar	317,833	324,194	2.0	922,556	942,815	2.2
Apr	307,087	320,223	4.3	1,229,643	1,263,038	2.7
May	319,462			1,549,105		
Jun	305,049			1,854,154		
Jul	306,675			2,160,829		
Aug	299,117			2,459,946		
Sep	292,222			2,752,168		
Oct	305,067			3,057,235		
Nov	291,085			3,348,320		
Dec	321,189			3,669,509		
Cheddar Cheese						
Jan	246,690	244,808	-0.8	246,690	244,808	-0.8
Feb	219,377	223,308	1.8	466,067	468,116	0.4
Mar	240,590	241,804	0.5	706,657	709,920	0.5
Apr	231,685	241,178	4.1	938,342	951,098	1.4
May	239,124			1,177,466		
Jun	229,741			1,407,207		
Jul	229,870			1,637,077		
Aug	223,183			1,860,260		
Sep	214,603			2,074,863		
Oct	220,878			2,295,741		
Nov	212,629			2,508,370		
Dec	240,972			2,749,342		

See footnote(s) at end of table.

--continued

**Dairy Products: Production by Product and Month,
United States, 2003-2004¹ (continued)**

Product and Month	By Month			Cumulative		
	2003	2004	Change From 2003	2003	2004	Change From 2003
	<i>1,000 Pounds</i>	<i>1,000 Pounds</i>	<i>Percent</i>	<i>1,000 Pounds</i>	<i>1,000 Pounds</i>	<i>Percent</i>
Italian Cheese ³						
Jan	292,100	307,046	5.1	292,100	307,046	5.1
Feb	265,492	299,501	12.8	557,592	606,547	8.8
Mar	299,783	333,416	11.2	857,375	939,963	9.6
Apr	297,684	309,871	4.1	1,155,059	1,249,834	8.2
May	302,565			1,457,624		
Jun	293,040			1,750,664		
Jul	293,823			2,044,487		
Aug	288,787			2,333,274		
Sep	287,912			2,621,186		
Oct	297,437			2,918,623		
Nov	289,184			3,207,807		
Dec	314,242			3,522,049		
Mozzarella						
Jan	231,028	244,677	5.9	231,028	244,677	5.9
Feb	211,519	240,013	13.5	442,547	484,690	9.5
Mar	237,475	262,896	10.7	680,022	747,586	9.9
Apr	236,320	249,710	5.7	916,342	997,296	8.8
May	246,188			1,162,530		
Jun	236,757			1,399,287		
Jul	236,511			1,635,798		
Aug	232,518			1,868,316		
Sep	225,454			2,093,770		
Oct	232,061			2,325,831		
Nov	230,315			2,556,146		
Dec	249,953			2,806,099		
Other Italian						
Jan	61,072	62,369	2.1	61,072	62,369	2.1
Feb	53,973	59,488	10.2	115,045	121,857	5.9
Mar	62,308	70,520	13.2	177,353	192,377	8.5
Apr	61,364	60,161	-2.0	238,717	252,538	5.8
May	56,377			295,094		
Jun	56,283			351,377		
Jul	57,312			408,689		
Aug	56,269			464,958		
Sep	62,458			527,416		
Oct	65,376			592,792		
Nov	58,869			651,661		
Dec	64,289			715,950		

See footnote(s) at end of table.

--continued

**Dairy Products: Production by Product and Month,
United States, 2003-2004 ¹ (continued)**

Product and Month	By Month			Cumulative		
	2003	2004	Change From 2003	2003	2004	Change From 2003
	<i>1,000 Pounds</i>	<i>1,000 Pounds</i>	<i>Percent</i>	<i>1,000 Pounds</i>	<i>1,000 Pounds</i>	<i>Percent</i>
Butter						
Jan	141,912	131,859	-7.1	141,912	131,859	-7.1
Feb	128,086	105,788	-17.4	269,998	237,647	-12.0
Mar	126,400	96,741	-23.5	396,398	334,388	-15.6
Apr	122,844	97,082	-21.0	519,242	431,470	-16.9
May	114,895			634,137		
Jun	84,169			718,306		
Jul	80,050			798,356		
Aug	70,916			869,272		
Sep	73,267			942,539		
Oct	96,784			1,039,323		
Nov	88,436			1,127,759		
Dec	114,599			1,242,358		
Nonfat Dry Milk, Human						
Jan	141,299	120,490	-14.7	141,299	120,490	-14.7
Feb	137,213	115,772	-15.6	278,512	236,262	-15.2
Mar	155,430	118,018	-24.1	433,942	354,280	-18.4
Apr	159,997	134,027	-16.2	593,939	488,307	-17.8
May	163,883			757,822		
Jun	139,992			897,814		
Jul	127,915			1,025,729		
Aug	107,060			1,132,789		
Sep	96,774			1,229,563		
Oct	106,887			1,336,450		
Nov	110,865			1,447,315		
Dec	141,726			1,589,041		
Total Dry Whey ²						
Jan	95,268	87,073	-8.6	95,268	87,073	-8.6
Feb	86,466	83,904	-3.0	181,734	170,977	-5.9
Mar	98,511	93,745	-4.8	280,245	264,722	-5.5
Apr	92,801	91,978	-0.9	373,046	356,700	-4.4
May	97,256			470,302		
Jun	92,410			562,712		
Jul	93,709			656,421		
Aug	87,643			744,064		
Sep	84,812			828,876		
Oct	86,176			915,052		
Nov	82,343			997,395		
Dec	88,948			1,086,343		

See footnote(s) at end of table.

--continued

**Dairy Products: Production by Product and Month,
United States, 2003-2004¹ (continued)**

Product and Month	By Month			Cumulative		
	2003	2004	Change From 2003	2003	2004	Change From 2003
	<i>1,000 Pounds</i>	<i>1,000 Pounds</i>	<i>Percent</i>	<i>1,000 Pounds</i>	<i>1,000 Pounds</i>	<i>Percent</i>
Cream Cottage Cheese						
Jan	32,071	31,897	-0.5	32,071	31,897	-0.5
Feb	29,246	30,642	4.8	61,317	62,539	2.0
Mar	31,570	34,940	10.7	92,887	97,479	4.9
Apr	33,847	31,247	-7.7	126,734	128,726	1.6
May	32,722			159,456		
Jun	33,694			193,150		
Jul	34,767			227,917		
Aug	34,175			262,092		
Sep	33,043			295,135		
Oct	32,276			327,411		
Nov	28,723			356,134		
Dec	29,042			385,176		
Lowfat Cottage Cheese						
Jan	31,263	31,839	1.8	31,263	31,839	1.8
Feb	29,543	30,591	3.5	60,806	62,430	2.7
Mar	32,003	35,649	11.4	92,809	98,079	5.7
Apr	32,910	32,529	-1.2	125,719	130,608	3.9
May	32,039			157,758		
Jun	30,301			188,059		
Jul	32,910			220,969		
Aug	33,182			254,151		
Sep	33,974			288,125		
Oct	33,398			321,523		
Nov	29,728			351,251		
Dec	28,782			380,033		
	<i>1,000 Gallons</i>	<i>1,000 Gallons</i>	<i>Percent</i>	<i>1,000 Gallons</i>	<i>1,000 Gallons</i>	<i>Percent</i>
Ice Cream, Hard						
Jan	69,795	59,132	-15.3	69,795	59,132	-15.3
Feb	70,821	65,823	-7.1	140,616	124,955	-11.1
Mar	75,716	78,711	4.0	216,332	203,666	-5.9
Apr	84,367	77,120	-8.6	300,699	280,786	-6.6
May	80,900			381,599		
Jun	84,698			466,297		
Jul	84,507			550,804		
Aug	77,382			628,186		
Sep	73,398			701,584		
Oct	69,761			771,345		
Nov	59,530			830,875		
Dec	56,091			886,966		

See footnote(s) at end of table.

--continued

**Dairy Products: Production by Product and Month,
United States, 2003-2004¹ (continued)**

Product and Month	By Month			Cumulative		
	2003	2004	Change From 2003	2003	2004	Change From 2003
	<i>1,000 Gallons</i>	<i>1,000 Gallons</i>	<i>Percent</i>	<i>1,000 Gallons</i>	<i>1,000 Gallons</i>	<i>Percent</i>
Ice Cream, Lowfat						
Jan	23,544	25,947	10.2	23,544	25,947	10.2
Feb	24,272	26,832	10.5	47,816	52,779	10.4
Mar	29,618	36,689	23.9	77,434	89,468	15.5
Apr	32,249	38,956	20.8	109,683	128,424	17.1
May	34,534			144,217		
Jun	36,902			181,119		
Jul	38,783			219,902		
Aug	33,504			253,406		
Sep	28,364			281,770		
Oct	27,413			309,183		
Nov	21,285			330,468		
Dec	22,466			352,934		
Ice Cream, NF, Hard						
Jan	1,440	1,430	-0.7	1,440	1,430	-0.7
Feb	1,382	1,482	7.2	2,822	2,912	3.2
Mar	1,593	1,693	6.3	4,415	4,605	4.3
Apr	1,830	2,081	13.7	6,245	6,686	7.1
May	1,839			8,084		
Jun	1,865			9,949		
Jul	1,858			11,807		
Aug	1,478			13,285		
Sep	1,564			14,849		
Oct	1,681			16,530		
Nov	1,344			17,874		
Dec	1,097			18,971		
Sherbet, Hard						
Jan	3,986	3,766	-5.5	3,986	3,766	-5.5
Feb	4,311	3,973	-7.8	8,297	7,739	-6.7
Mar	4,683	5,609	19.8	12,980	13,348	2.8
Apr	5,011	5,178	3.3	17,991	18,526	3.0
May	5,058			23,049		
Jun	5,582			28,631		
Jul	5,053			33,684		
Aug	4,552			38,236		
Sep	4,255			42,491		
Oct	3,697			46,188		
Nov	3,169			49,357		
Dec	3,209			52,566		

See footnote(s) at end of table.

--continued

**Dairy Products: Production by Product and Month,
United States, 2003-2004 ¹ (continued)**

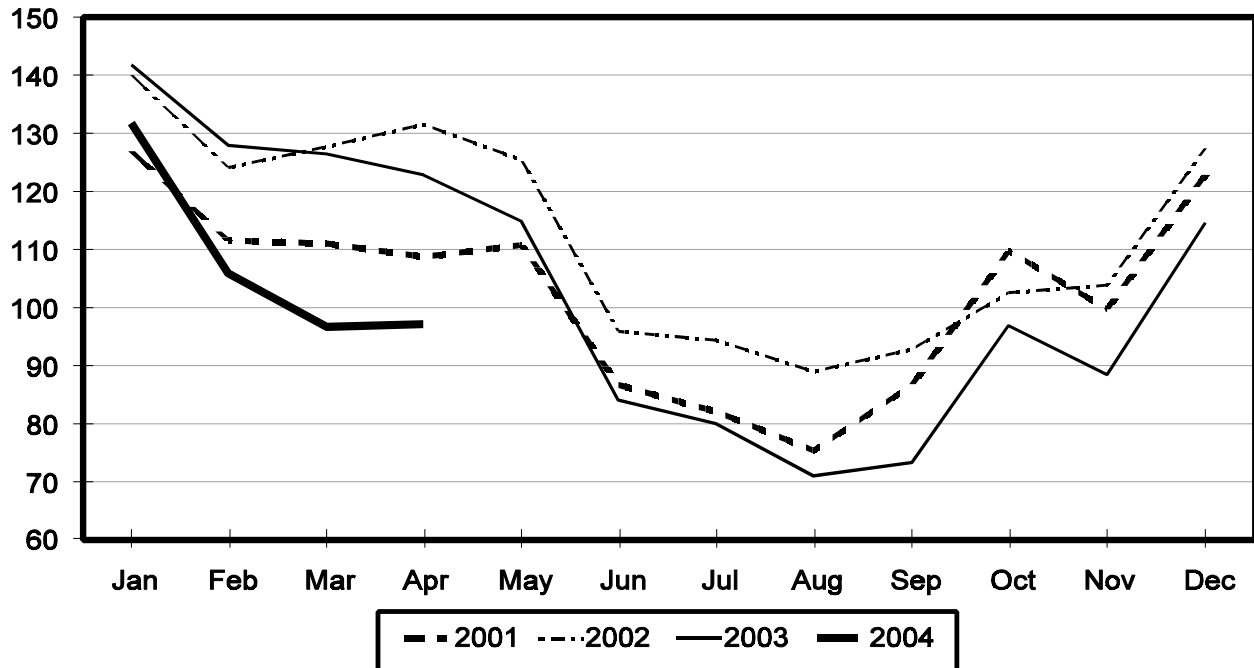
Product and Month	By Month			Cumulative		
	2003	2004	Change From 2003	2003	2004	Change From 2003
	<i>1,000 Gallons</i>	<i>1,000 Gallons</i>	<i>Percent</i>	<i>1,000 Gallons</i>	<i>1,000 Gallons</i>	<i>Percent</i>
Frozen Yogurt						
Jan	5,271	4,403	-16.5	5,271	4,403	-16.5
Feb	5,731	4,973	-13.2	11,002	9,376	-14.8
Mar	5,803	6,246	7.6	16,805	15,622	-7.0
Apr	7,025	6,038	-14.0	23,830	21,660	-9.1
May	6,558			30,388		
Jun	6,211			36,599		
Jul	6,057			42,656		
Aug	5,953			48,609		
Sep	5,818			54,427		
Oct	5,282			59,709		
Nov	4,399			64,108		
Dec	3,916			68,024		

¹ March 2004 data revised.

² Excludes all modified dry whey products.

Total Butter Production United States

Million Pounds



**Total Cheese, Excluding Cottage Cheese: Production by
State and United States, April 2003-2004**

State	Apr 2003	Mar ¹ 2004	Apr 2004	Change From	
				Apr 2003	Mar 2004
	<i>1,000 Pounds</i>	<i>1,000 Pounds</i>	<i>1,000 Pounds</i>	<i>Percent</i>	<i>Percent</i>
CA	150,094	170,976	169,718	13.1	-0.7
IL	8,090	8,162	8,093		-0.8
IA	14,944	13,145	13,203	-11.7	0.4
MA	93	46	90	-3.2	95.7
MN	53,490	53,967	53,905	0.8	-0.1
MO	7,624	7,963	8,646	13.4	8.6
NY	58,727	66,784	58,432	-0.5	-12.5
OH	13,193	15,811	15,069	14.2	-4.7
PA	33,145	35,624	32,916	-0.7	-7.6
SD	12,881	13,816	13,085	1.6	-5.3
UT	5,870	6,092	6,697	14.1	9.9
WI	185,821	207,084	196,785	5.9	-5.0
Oth Sts ²	174,862	180,129	178,151	1.9	-1.1
US	718,834	779,599	754,790	5.0	-3.2
N Atlantic	107,030	119,559	107,675	0.6	-9.9
S Atlantic	4,007	3,217	3,904	-2.6	21.4
E N Central	221,807	244,062	235,205	6.0	-3.6
W N Central	96,121	92,008	91,792	-4.5	-0.2
S Central	7,409	8,629	7,647	3.2	-11.4
West	282,460	312,124	308,567	9.2	-1.1

¹ Revised.

² States not shown when fewer than 3 plants reported or individual plant operations could be disclosed. Percent change shown only when comparable States are included in the calculation.

American Cheese: Production by State and United States, April 2003-2004

State	Apr 2003	Mar ¹ 2004	Apr 2004	Change From	
				Apr 2003	Mar 2004
	<i>1,000 Pounds</i>	<i>1,000 Pounds</i>	<i>1,000 Pounds</i>	<i>Percent</i>	<i>Percent</i>
CA	65,318	69,711	71,843	10.0	3.1
ID	38,538	42,514	42,353	9.9	-0.4
IA	11,667	10,361	10,520	-9.8	1.5
MN	51,185	52,145	51,781	1.2	-0.7
NY	9,574	7,775	7,437	-22.3	-4.3
OH	2,912	2,918	2,861	-1.8	-2.0
OR	8,155	8,375	8,241	1.1	-1.6
SD	6,543	7,294	7,681	17.4	5.3
WI	68,146	75,600	73,600	8.0	-2.6
Oth Sts ²	45,049	47,501	43,906	-2.5	-7.6
US	307,087	324,194	320,223	4.3	-1.2
Atlantic	15,287	13,674	13,680	-10.5	
E N Central	72,269	79,592	77,763	7.6	-2.3
W N Central	70,399	70,225	70,386		0.2
S Central	4,372	4,998	4,353	-0.4	-12.9
West	144,760	155,705	154,041	6.4	-1.1

¹ Revised.

² States not shown when fewer than 3 plants reported or individual plant operations could be disclosed. Percent change shown only when comparable States are included in the calculation.

Cheddar Cheese: Production by State and United States, April 2003-2004

State	Apr 2003	Mar ¹ 2004	Apr 2004	Change From	
				Apr 2003	Mar 2004
	<i>1,000 Pounds</i>	<i>1,000 Pounds</i>	<i>1,000 Pounds</i>	<i>Percent</i>	<i>Percent</i>
CA	43,401	44,064	50,615	16.6	14.9
ID	17,590	19,731	20,121	14.4	2.0
MN	46,785	47,392	48,176	3.0	1.7
NY	9,492	7,773	7,319	-22.9	-5.8
SD	4,638	5,249	5,798	25.0	10.5
WI	54,615	59,900	57,800	5.8	-3.5
Oth Sts ²	55,164	57,695	51,349	-6.9	-11.0
US	231,685	241,804	241,178	4.1	-0.3
Atlantic	14,555	13,107	12,917	-11.3	-1.4
E N Cen	56,755	62,043	59,856	5.5	-3.5
W N Cen	58,913	60,097	61,612	4.6	2.5
S Cen	4,371	4,998	4,352	-0.4	-12.9
West	97,091	101,559	102,441	5.5	0.9

¹ Revised.

² States not shown when fewer than 3 plants reported or individual plant operations could be disclosed. Percent change shown only when comparable States are included in the calculation.

Mozzarella Cheese: Production by State and United States, April 2003-2004

State	Apr 2003	Mar ¹ 2004	Apr 2004	Change From	
				Apr 2003	Mar 2004
	<i>1,000 Pounds</i>	<i>1,000 Pounds</i>	<i>1,000 Pounds</i>	<i>Percent</i>	<i>Percent</i>
CA	63,829	77,206	74,950	17.4	-2.9
NY	16,271	15,812	15,634	-3.9	-1.1
PA	17,678	19,976	18,339	3.7	-8.2
WI	62,512	72,200	65,500	4.8	-9.3
Oth Sts ²	76,030	77,702	75,287	-1.0	-3.1
US	236,320	262,896	249,710	5.7	-5.0
Atlantic ³	42,119	45,152	41,905	-0.5	-7.2
E N Central	75,930	84,215	79,347	4.5	-5.8
West	106,938	125,007	121,131	13.3	-3.1

¹ Revised.

² States not shown when fewer than 3 plants reported or individual plant operations could be disclosed. Percent change shown only when comparable States are included in the calculation.

³ Region totals may not add to U.S. when compiled regions could not be disclosed.

Butter: Production by State and United States, April 2003-2004

State	Apr 2003	Mar ¹ 2004	Apr 2004	Change From	
				Apr 2003	Mar 2004
	<i>1,000 Pounds</i>	<i>1,000 Pounds</i>	<i>1,000 Pounds</i>	<i>Percent</i>	<i>Percent</i>
CA	34,344	28,672	30,849	-10.2	7.6
NY	2,129	2,048	2,179	2.3	6.4
PA	7,647	6,223	6,369	-16.7	2.3
WI	30,172	21,225	18,400	-39.0	-13.3
Oth Sts ²	48,552	38,573	39,285	-19.1	1.8
US	122,844	96,741	97,082	-21.0	0.4
N Atlantic ³	14,086	11,723	12,644	-10.2	7.9
E N Central	34,020	23,470	21,320	-37.3	-9.2
W N Central	9,828	8,940	8,857	-9.9	-0.9
West	50,313	41,590	42,744	-15.0	2.8

¹ Revised.

² States not shown when fewer than 3 plants reported or individual plant operations could be disclosed. Percent change shown only when comparable States are included in the calculation.

³ Region totals may not add to U.S. when compiled regions could not be disclosed.

**Nonfat Dry Milk, Human: Production by State
and United States, April 2003-2004**

State	Apr 2003	Mar ¹ 2004	Apr 2004	Change From	
				Apr 2003	Mar 2004
	<i>1,000 Pounds</i>	<i>1,000 Pounds</i>	<i>1,000 Pounds</i>	<i>Percent</i>	<i>Percent</i>
CA	69,456	62,941	66,101	-4.8	5.0
Oth Sts ²	90,541	55,077	67,926	-25.0	23.3
US	159,997	118,018	134,027	-16.2	13.6
Atlantic	21,528	11,045	18,458	-14.3	67.1
E N Central	4,707	1,176	2,921	-37.9	148.4
W N Central	6,868	4,659	5,117	-25.5	9.8
S Central	7,982	5,305	6,333	-20.7	19.4
West	118,912	95,833	101,198	-14.9	5.6

¹ Revised.

² States not shown when fewer than 3 plants reported or individual plant operations could be disclosed. Percent change shown only when comparable States are included in the calculation.

**Dry Whey, Human: Production by State
and United States, April 2003-2004**

State	Apr 2003	Mar ¹ 2004	Apr 2004	Change From	
				Apr 2003	Mar 2004
	<i>1,000 Pounds</i>	<i>1,000 Pounds</i>	<i>1,000 Pounds</i>	<i>Percent</i>	<i>Percent</i>
CA	10,754	10,056	10,978	2.1	9.2
MN	7,686	4,164	4,263	-44.5	2.4
NY	9,647	10,279	10,337	7.2	0.6
PA	9,086	9,333	9,019	-0.7	-3.4
UT	1,764	1,578	1,658	-6.0	5.1
WI	26,759	27,686	26,000	-2.8	-6.1
Oth Sts ²	19,993	20,446	22,156	10.8	8.4
US	85,689	83,542	84,411	-1.5	1.0
Atlantic	18,733	19,612	19,356	3.3	-1.3
Central	43,334	40,602	40,661	-6.2	0.1
West	23,622	23,328	24,394	3.3	4.6

¹ Revised.

² States not shown when fewer than 3 plants reported or individual plant operations could be disclosed. Percent change shown only when comparable States are included in the calculation.

Ice Cream, Hard: Production by State and United States, April 2003-2004

State	Apr 2003	Mar ¹ 2004	Apr 2004	Change From	
				Apr 2003	Mar 2004
	<i>1,000 Gallons</i>	<i>1,000 Gallons</i>	<i>1,000 Gallons</i>	<i>Percent</i>	<i>Percent</i>
CA	11,236	11,892	10,310	-8.2	-13.3
FL	2,360	1,600	1,700	-28.0	6.3
IL	3,528	3,329	3,667	3.9	10.2
IN	7,424	7,899	7,513	1.2	-4.9
MD	1,507	1,740	1,710	13.5	-1.7
MA	6,845	3,870	5,327	-22.2	37.6
MI	1,309	1,400	1,100	-16.0	-21.4
MN	3,434	4,303	3,194	-7.0	-25.8
MO	4,733	2,363	1,826	-61.4	-22.7
NY	2,934	3,100	3,600	22.7	16.1
NC	1,449	1,337	1,528	5.5	14.3
OH	2,928	2,580	2,312	-21.0	-10.4
OR	1,182	1,114	1,320	11.7	18.5
PA	3,980	3,247	3,047	-23.4	-6.2
TN	1,497	1,534	1,562	4.3	1.8
TX	4,600	3,883	4,203	-8.6	8.2
UT	1,241	1,778	2,398	93.2	34.9
Oth Sts ²	22,180	21,742	20,803	-6.2	-4.3
US	84,367	78,711	77,120	-8.6	-2.0
N Atlantic	16,250	13,008	15,169	-6.7	16.6
S Atlantic	7,074	6,045	6,286	-11.1	4.0
E N Central	16,152	16,141	15,547	-3.7	-3.7
W N Central	16,177	15,013	11,983	-25.9	-20.2
S Central	9,938	9,419	9,702	-2.4	3.0
West	18,776	19,085	18,433	-1.8	-3.4

¹ Revised.

² States not shown when fewer than 3 plants reported or individual plant operations could be disclosed. Percent change shown only when comparable States are included in the calculation.

**Canned Milk and Dry Milk Products: Manufacturers' Shipments,
Stocks, and Selling Prices, April, 2003-2004**

Product	Apr 2003	Mar 2004 ¹	Apr 2004	Change From	
				Apr 2003	Mar 2004
Manufacturers' Shipments²					
	<i>1,000 Pounds</i>	<i>1,000 Pounds</i>	<i>1,000 Pounds</i>	<i>Percent</i>	<i>Percent</i>
Nonfat Dry Milk, Human	146,619	123,464	113,849	-22.4	-7.8
Manufacturers' Stocks End-of-Month³					
	<i>1,000 Pounds</i>	<i>1,000 Pounds</i>	<i>1,000 Pounds</i>	<i>Percent</i>	<i>Percent</i>
Canned Evaporated and Condensed Whole Milk	56,870	49,492	54,830	-3.6	10.8
Nonfat Dry Milk, Human	129,308	79,916	106,087	-18.0	32.7
Dry Buttermilk, Total	9,594	4,850	4,807	-49.9	-0.9

¹ Revised.

² For dry products, shipments of bulk goods only.

³ Stocks held by manufacturers at all points and in transit.

Procedures and Reliability: Estimates included in this report are based on data provided each month by manufacturers of these products. In 32 States, the State Departments of Agriculture assist in collection of data, which eliminates duplicate reporting and reduces respondent burden. Data are collected by mail, personal and telephone interviews following the close of each month. There were 1,126 manufacturers that made one or more products in 2003. Each month, reports are generally received from all dairy plants in States with small numbers of plants. In States with large numbers of plants, survey procedures are designed to obtain monthly reports from all large plants and from a sample of small plants. Monthly estimates are based upon returns from about 70 percent of the plants which account for 70 to 90 percent of the total production of major dairy products.

Revision Policy: Monthly estimates are subject to revision the month following the preliminary estimates. Annual estimates are published in the "**Dairy Products**" report published each April which includes any revisions made to current and previous year. An attempt is made to get information from all plants for preparing these estimates

ACCESS TO REPORTS!!

For your convenience, there are several ways to obtain NASS reports, data products, and services:

INTERNET ACCESS

All NASS reports are available free of charge on the worldwide Internet. For access, connect to the Internet and go to the NASS Home Page at: www.usda.gov/nass/. Select "Today's Reports" or Publications and then Reports Calendar or Publications and then Search, by Title or Subject.

E-MAIL SUBSCRIPTION

All NASS reports are available by subscription free of charge direct to your e-mail address. Starting with the NASS Home Page at www.usda.gov/nass/, click on **Publications**, then click on the **Subscribe by E-mail** button which takes you to the page describing e-mail delivery of reports. Finally, click on **Go to the Subscription Page** and follow the instructions.

PRINTED REPORTS OR DATA PRODUCTS

CALL OUR TOLL-FREE ORDER DESK: 800-999-6779 (U.S. and Canada)
Other areas, please call 703-605-6220 FAX: 703-605-6900
(Visa, MasterCard, check, or money order acceptable for payment.)

ASSISTANCE

For **assistance** with general agricultural statistics or further information about NASS or its products or services, contact the **Agricultural Statistics Hotline** at **800-727-9540**, 7:30 a.m. to 4:00 p.m. ET, or e-mail: nass@nass.usda.gov.

The United States Department of Agriculture (USDA) prohibits discrimination in all its programs on the basis of race, color, national origin, gender, religion, age, disability, political beliefs, sexual orientation, and marital or family status. (Not all prohibited bases apply to all programs.) Persons with disabilities who require alternative means for communication of program information (braille, large print, audiotape, etc.) should contact the USDA's TARGET Center at 202-720-2600 (voice and TDD).

To file a complaint of discrimination, write USDA, Director, Office of Civil Rights, Room 326-W, Whitten Building, 1400 Independence Avenue, SW, Washington, D.C., 20250-9410, or call 202-720-5964 (voice or TDD). USDA is an equal opportunity provider and employer.