

Released July 2, 2004, by the National Agricultural Statistics Service (NASS), Agricultural Statistics Board, U.S. Department of Agriculture. For information on *Dairy Products* call Kevin Pautler at (202) 720-9168, office hours 7:30 a.m. to 4:00 p.m. ET.

## May 2004 Highlights

**Total cheese** output (excluding cottage cheese) was 744 million pounds, 1.0 percent above May 2003 but 1.7 percent below April 2004.

**American type cheese** production totaled 327 million pounds, 2.4 percent above May 2003 and 1.5 percent above April 2004.

**Butter** production was 102 million pounds in May, 10.9 percent below May 2003 but 6.1 percent above April 2004.

**Frozen dessert:** (comparisons with May 2003)

Ice cream, Regular (hard) --- 74.8 million gallons, down 7.5 percent.

Ice cream, Lowfat (total) --- 37.9 million gallons, up 9.7 percent.

Ice cream, Nonfat (hard) --- 1.80 million gallons, down 2.4 percent.

Sherbet (hard) --- 4.96 million gallons, down 2.0 percent.

Frozen Yogurt (total) --- 6.32 million gallons, down 3.6 percent.

**Nonfat dry milk for human food:** (compared with May 2003) --- 148 million pounds, down 9.6 percent.

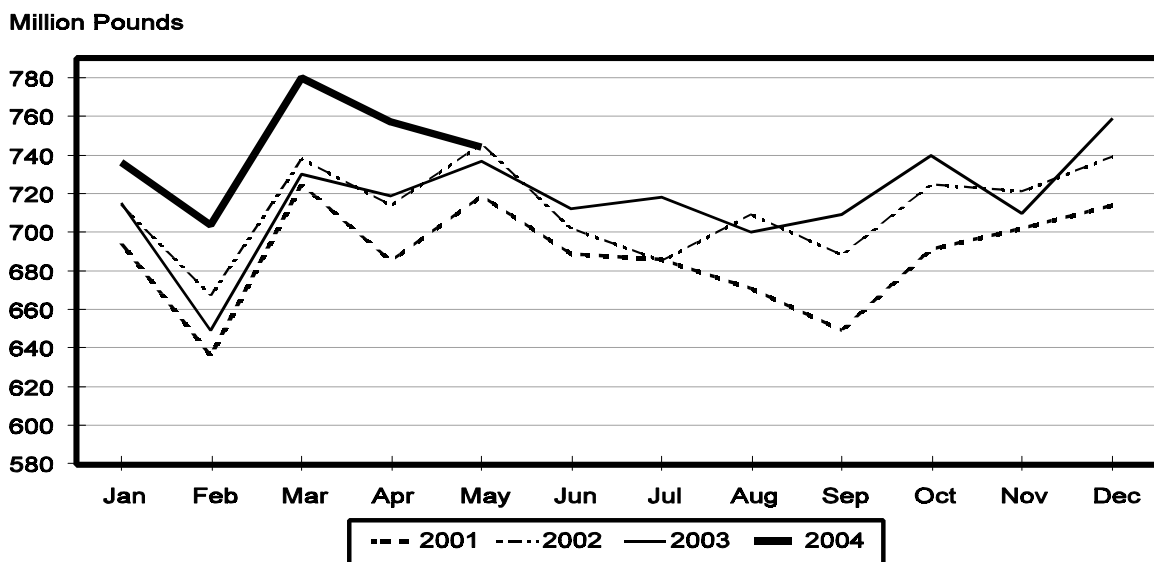
**Dry whey products:** (comparisons with May 2003)

Dry whey, human --- 82.6 million pounds, down 9.0 percent.

Dry whey, animal --- 8.20 million pounds, up 27.3 percent.

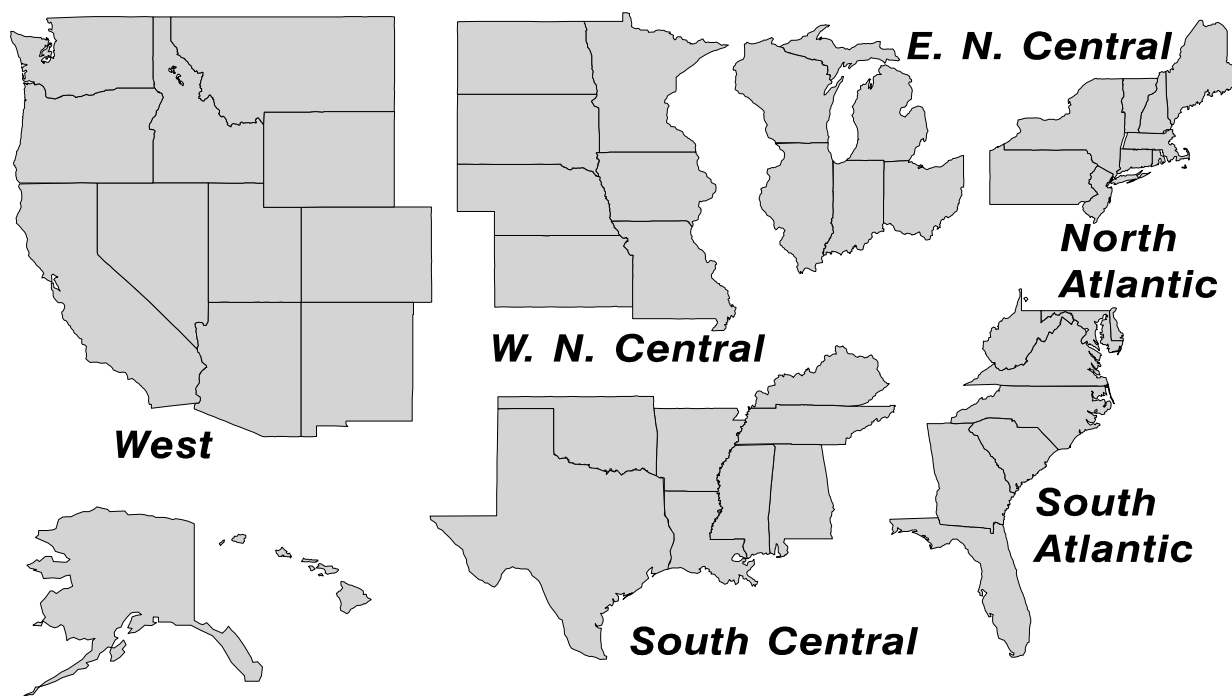
Dry whey, total --- 90.8 million pounds, down 6.6 percent.

## Total Cheese Production United States



## U. S. Geographic Regions Dairy Products

State totals are not published when fewer than 3 firms have reported or one firm comprises more than 60 percent of the State total. If we are not able to publish a region for confidentiality reasons, it will be combined with other regions when possible. For example, if North Atlantic can not be published, then it will be combined with South Atlantic to publish Atlantic. The West North Central and East North Central will be combined, if necessary, to form North Central. In the event that neither could be published, they may be combined with South Central to publish Central. Some tables will have only limited regions shown, therefore the regions may not add to the United States total.



## Contents

## Page

Dairy Products: Production by Product, United States, May, 2003-2004 .....	1
Whey and Modified Whey Products: Production, Stocks, and Prices, United States, May, 2003-2004 .....	2
Dairy Products: Production by Product and Month, United States, 2003-2004 .....	3
Select Commodities by State and United States, May, 2003-2004 .....	9
Canned Milk and Dry Milk Products: Manufacturer's Shipments, Stocks, and Selling Prices, May, 2003-2004 .....	13
Procedures and Reliability .....	14

**Dairy Products: Production by Product,  
United States, May, 2003-2004**

Product	May 2003	Apr 2004 <sup>1</sup>	May 2004	Change From	
				May 2003	Apr 2004
	<i>1,000 Pounds</i>	<i>1,000 Pounds</i>	<i>1,000 Pounds</i>	<i>Percent</i>	<i>Percent</i>
Butter	114,895	96,521	102,393	-10.9	6.1
Cheese					
American Types <sup>2</sup>	319,462	322,411	327,101	2.4	1.5
Cheddar	239,124	243,367	246,735	3.2	1.4
Swiss	22,444	24,306	24,080	7.3	-0.9
Brick and Muenster	7,966	6,416	5,950	-25.3	-7.3
Cream and Neufchatel	53,579	59,902	50,070	-6.5	-16.4
Hispanic	11,318	11,494	9,812	-13.3	-14.6
Mozzarella	246,188	249,677	244,875	-0.5	-1.9
Other Italian Types	56,377	59,741	57,973	2.8	-3.0
Total Italian Types	302,565	309,418	302,848	0.1	-2.1
All Other Types	19,693	22,831	24,283	23.3	6.4
Total	737,027	756,778	744,144	1.0	-1.7
Cottage Cheese, Curd <sup>3</sup>	37,894	37,036	35,163	-7.2	-5.1
Cottage Cheese, Cream <sup>4</sup>	32,722	31,360	30,697	-6.2	-2.1
Cottage Cheese, Lowfat <sup>5</sup>	32,039	32,172	34,064	6.3	5.9
Canned Evaporated and Condensed Whole Milk	61,428	38,537	46,014	-25.1	19.4
Dry Whole Milk	1,918	5,269	3,154	64.4	-40.1
Nonfat Dry Milk, Human	163,883	134,057	148,133	-9.6	10.5
Dry Skim Milk, Animal	470	437	387	-17.7	-11.4
Dry Buttermilk	4,691	5,034	5,464	16.5	8.5
Sour Cream	76,599	76,004	75,995	-0.8	
Yogurt, Plain & Flavored	200,040	214,804	220,667	10.3	2.7
	<i>1,000 Gallons</i>	<i>1,000 Gallons</i>	<i>1,000 Gallons</i>	<i>Percent</i>	<i>Percent</i>
Frozen Products					
Ice Cream, Hard	80,900	77,391	74,820	-7.5	-3.3
Ice Cream, Lowfat, Hard	9,432	11,390	9,956	5.6	-12.6
Ice Cream, Lowfat, Soft	25,102	27,570	27,925	11.2	1.3
Ice Cream, Lowfat, Total	34,534	38,960	37,881	9.7	-2.8
Ice Cream, Nonfat, Hard	1,839	1,972	1,795	-2.4	-9.0
Sherbet, Hard	5,058	5,171	4,956	-2.0	-4.2
Water and Juice Ices	6,498	5,891	6,241	-4.0	5.9
Frozen Yogurt, Total	6,558	6,016	6,321	-3.6	5.1
Regular & Lowfat, Hard	1,963	1,932	1,564	-20.3	-19.0
Nonfat, Hard	1,270	1,027	916	-27.9	-10.8
Other Frozen Dairy Products	810	824	788	-2.7	-4.4
Mix for Frozen Products					
Ice Cream Mix	48,686	48,744	44,769	-8.0	-8.2
Ice Cream, Lowfat, Mix	20,571	21,571	21,017	2.2	-2.6
Ice Cream, Nonfat, Mix	1,351	1,437	1,251	-7.4	-12.9
Sherbet Mix	3,618	3,507	3,361	-7.1	-4.2
Yogurt Mix	4,135	3,539	3,718	-10.1	5.1

<sup>1</sup> Revised.

<sup>2</sup> Includes Cheddar, Colby, Monterey, and Jack.

<sup>3</sup> Mostly used for processing into cream or lowfat cottage cheese.

<sup>4</sup> Fat content 4 percent or more.

<sup>5</sup> Fat content less than 4 percent.

**Whey and Modified Whey Products: Production, Stocks,  
and Prices, United States, May, 2003-2004**

Product	May 2003	Apr 2004 <sup>1</sup>	May 2004	Change From	
				May 2003	Apr 2004
<b>Production</b>					
	<i>1,000 Pounds</i>	<i>1,000 Pounds</i>	<i>1,000 Pounds</i>	<i>Percent</i>	<i>Percent</i>
Condensed Whey, Solids Content <sup>2</sup>					
Sweet-Type, Human	10,155	7,193	8,307	-18.2	15.5
Dry Whey Products					
Dry Whey, Human	90,819	84,411	82,617	-9.0	-2.1
Dry Whey, Animal	6,437	7,567	8,197	27.3	8.3
Dry Whey, Total	97,256	91,978	90,814	-6.6	-1.3
Reduced Lactose and Minerals					
Human Food	3,092	4,353	3,015	-2.5	-30.7
Animal Feed <sup>3</sup>	3,585	3,583	3,787	5.6	5.7
Lactose, Human and Animal	50,579	54,366	57,979	14.6	6.6
Whey					
Protein Concentrate, Human <sup>4</sup>	26,778	24,324	24,438	-8.7	0.5
Protein Concentrate, Animal <sup>4</sup>	3,327	3,715	3,689	10.9	-0.7
<b>Manufacturers' Stocks End-of-Month <sup>5</sup></b>					
	<i>1,000 Pounds</i>	<i>1,000 Pounds</i>	<i>1,000 Pounds</i>	<i>Percent</i>	<i>Percent</i>
Dry Whey Products					
Dry Whey, Human	45,389	32,460	33,703	-25.7	3.8
Dry Whey, Animal	2,264	3,924	4,886	115.8	24.5
Reduced Lactose and Minerals					
Human and Animal <sup>6</sup>	10,138	7,460	7,069	-30.3	-5.2
Lactose, Human and Animal	40,256	54,591	55,448	37.7	1.6
Whey Protein Concentrate, Human <sup>4</sup>	30,662	17,298	18,092	-41.0	4.6
Whey Protein Concentrate, Animal <sup>4</sup>	1,607	1,648	1,748	8.8	6.1
<b>Manufacturers' Selling Price <sup>7</sup></b>					
	<i>Cents per Pound</i>	<i>Cents per Pound</i>	<i>Cents per Pound</i>	<i>Cents Change</i>	<i>Cents Change</i>
Dry Whey, Animal	11.5	25.6	26.9	15.4	1.3

<sup>1</sup> Revised.

<sup>2</sup> Final marketable product only. Does not include quantity used or shipped to another plant for further processing into dry whey or modified whey products. Does not include sweet-type, animal whey.

<sup>3</sup> Not shown when fewer than 3 plants reported or individual plant operations could be disclosed.

<sup>4</sup> Whey Protein Concentrate, 25.0 to 89.9 percent.

<sup>5</sup> Stocks held by manufacturers at all points and in transit.

<sup>6</sup> Reduced lactose and minerals stocks combined to avoid disclosure of individual operations.

<sup>7</sup> Prices for bulk goods, f.o.b. plant. Average monthly prices reported by firms.

**Dairy Products: Production by Product and Month,  
United States, 2003-2004 <sup>1</sup>**

Product and Month	By Month			Cumulative		
	2003	2004	Change From 2003	2003	2004	Change From 2003
	<i>1,000 Pounds</i>	<i>1,000 Pounds</i>	<i>Percent</i>	<i>1,000 Pounds</i>	<i>1,000 Pounds</i>	<i>Percent</i>
<b>Total Cheese</b>						
Jan	714,838	735,851	2.9	714,838	735,851	2.9
Feb	648,644	704,288	8.6	1,363,482	1,440,139	5.6
Mar	730,287	779,599	6.8	2,093,769	2,219,738	6.0
Apr	718,834	756,778	5.3	2,812,603	2,976,516	5.8
May	737,027	744,144	1.0	3,549,630	3,720,660	4.8
Jun	712,309			4,261,939		
Jul	718,258			4,980,197		
Aug	700,132			5,680,329		
Sep	708,708			6,389,037		
Oct	740,016			7,129,053		
Nov	710,036			7,839,089		
Dec	758,887			8,597,976		
<b>American Cheese</b>						
Jan	318,428	321,380	0.9	318,428	321,380	0.9
Feb	286,295	297,241	3.8	604,723	618,621	2.3
Mar	317,833	324,194	2.0	922,556	942,815	2.2
Apr	307,087	322,411	5.0	1,229,643	1,265,226	2.9
May	319,462	327,101	2.4	1,549,105	1,592,327	2.8
Jun	305,049			1,854,154		
Jul	306,675			2,160,829		
Aug	299,117			2,459,946		
Sep	292,222			2,752,168		
Oct	305,067			3,057,235		
Nov	291,085			3,348,320		
Dec	321,189			3,669,509		
<b>Cheddar Cheese</b>						
Jan	246,690	244,808	-0.8	246,690	244,808	-0.8
Feb	219,377	223,308	1.8	466,067	468,116	0.4
Mar	240,590	241,804	0.5	706,657	709,920	0.5
Apr	231,685	243,367	5.0	938,342	953,287	1.6
May	239,124	246,735	3.2	1,177,466	1,200,022	1.9
Jun	229,741			1,407,207		
Jul	229,870			1,637,077		
Aug	223,183			1,860,260		
Sep	214,603			2,074,863		
Oct	220,878			2,295,741		
Nov	212,629			2,508,370		
Dec	240,972			2,749,342		

See footnote(s) at end of table.

--continued

**Dairy Products: Production by Product and Month,  
United States, 2003-2004<sup>1</sup> (continued)**

Product and Month	By Month			Cumulative		
	2003	2004	Change From 2003	2003	2004	Change From 2003
	<i>1,000 Pounds</i>	<i>1,000 Pounds</i>	<i>Percent</i>	<i>1,000 Pounds</i>	<i>1,000 Pounds</i>	<i>Percent</i>
Italian Cheese						
Jan	292,100	307,046	5.1	292,100	307,046	5.1
Feb	265,492	299,501	12.8	557,592	606,547	8.8
Mar	299,783	333,416	11.2	857,375	939,963	9.6
Apr	297,684	309,418	3.9	1,155,059	1,249,381	8.2
May	302,565	302,848	0.1	1,457,624	1,552,229	6.5
Jun	293,040			1,750,664		
Jul	293,823			2,044,487		
Aug	288,787			2,333,274		
Sep	287,912			2,621,186		
Oct	297,437			2,918,623		
Nov	289,184			3,207,807		
Dec	314,242			3,522,049		
Mozzarella						
Jan	231,028	244,677	5.9	231,028	244,677	5.9
Feb	211,519	240,013	13.5	442,547	484,690	9.5
Mar	237,475	262,896	10.7	680,022	747,586	9.9
Apr	236,320	249,677	5.7	916,342	997,263	8.8
May	246,188	244,875	-0.5	1,162,530	1,242,138	6.8
Jun	236,757			1,399,287		
Jul	236,511			1,635,798		
Aug	232,518			1,868,316		
Sep	225,454			2,093,770		
Oct	232,061			2,325,831		
Nov	230,315			2,556,146		
Dec	249,953			2,806,099		
Other Italian						
Jan	61,072	62,369	2.1	61,072	62,369	2.1
Feb	53,973	59,488	10.2	115,045	121,857	5.9
Mar	62,308	70,520	13.2	177,353	192,377	8.5
Apr	61,364	59,741	-2.6	238,717	252,118	5.6
May	56,377	57,973	2.8	295,094	310,091	5.1
Jun	56,283			351,377		
Jul	57,312			408,689		
Aug	56,269			464,958		
Sep	62,458			527,416		
Oct	65,376			592,792		
Nov	58,869			651,661		
Dec	64,289			715,950		

See footnote(s) at end of table.

--continued

**Dairy Products: Production by Product and Month,  
United States, 2003-2004 <sup>1</sup> (continued)**

Product and Month	By Month			Cumulative		
	2003	2004	Change From 2003	2003	2004	Change From 2003
	<i>1,000 Pounds</i>	<i>1,000 Pounds</i>	<i>Percent</i>	<i>1,000 Pounds</i>	<i>1,000 Pounds</i>	<i>Percent</i>
Butter						
Jan	141,912	131,859	-7.1	141,912	131,859	-7.1
Feb	128,086	105,788	-17.4	269,998	237,647	-12.0
Mar	126,400	96,741	-23.5	396,398	334,388	-15.6
Apr	122,844	96,521	-21.4	519,242	430,909	-17.0
May	114,895	102,393	-10.9	634,137	533,302	-15.9
Jun	84,169			718,306		
Jul	80,050			798,356		
Aug	70,916			869,272		
Sep	73,267			942,539		
Oct	96,784			1,039,323		
Nov	88,436			1,127,759		
Dec	114,599			1,242,358		
Nonfat Dry Milk, Human						
Jan	141,299	120,490	-14.7	141,299	120,490	-14.7
Feb	137,213	115,772	-15.6	278,512	236,262	-15.2
Mar	155,430	118,018	-24.1	433,942	354,280	-18.4
Apr	159,997	134,057	-16.2	593,939	488,337	-17.8
May	163,883	148,133	-9.6	757,822	636,470	-16.0
Jun	139,992			897,814		
Jul	127,915			1,025,729		
Aug	107,060			1,132,789		
Sep	96,774			1,229,563		
Oct	106,887			1,336,450		
Nov	110,865			1,447,315		
Dec	141,726			1,589,041		
Total Dry Whey <sup>2</sup>						
Jan	95,268	87,073	-8.6	95,268	87,073	-8.6
Feb	86,466	83,904	-3.0	181,734	170,977	-5.9
Mar	98,511	93,745	-4.8	280,245	264,722	-5.5
Apr	92,801	91,978	-0.9	373,046	356,700	-4.4
May	97,256	90,814	-6.6	470,302	447,514	-4.8
Jun	92,410			562,712		
Jul	93,709			656,421		
Aug	87,643			744,064		
Sep	84,812			828,876		
Oct	86,176			915,052		
Nov	82,343			997,395		
Dec	88,948			1,086,343		

See footnote(s) at end of table.

--continued



**Dairy Products: Production by Product and Month,  
United States, 2003-2004<sup>1</sup> (continued)**

Product and Month	By Month			Cumulative		
	2003	2004	Change From 2003	2003	2004	Change From 2003
	<i>1,000 Pounds</i>	<i>1,000 Pounds</i>	<i>Percent</i>	<i>1,000 Pounds</i>	<i>1,000 Pounds</i>	<i>Percent</i>
Cream Cottage Cheese						
Jan	32,071	31,897	-0.5	32,071	31,897	-0.5
Feb	29,246	30,642	4.8	61,317	62,539	2.0
Mar	31,570	34,940	10.7	92,887	97,479	4.9
Apr	33,847	31,360	-7.3	126,734	128,839	1.7
May	32,722	30,697	-6.2	159,456	159,536	0.1
Jun	33,694			193,150		
Jul	34,767			227,917		
Aug	34,175			262,092		
Sep	33,043			295,135		
Oct	32,276			327,411		
Nov	28,723			356,134		
Dec	29,042			385,176		
Lowfat Cottage Cheese						
Jan	31,263	31,839	1.8	31,263	31,839	1.8
Feb	29,543	30,591	3.5	60,806	62,430	2.7
Mar	32,003	35,649	11.4	92,809	98,079	5.7
Apr	32,910	32,172	-2.2	125,719	130,251	3.6
May	32,039	34,064	6.3	157,758	164,315	4.2
Jun	30,301			188,059		
Jul	32,910			220,969		
Aug	33,182			254,151		
Sep	33,974			288,125		
Oct	33,398			321,523		
Nov	29,728			351,251		
Dec	28,782			380,033		
	<i>1,000 Gallons</i>	<i>1,000 Gallons</i>	<i>Percent</i>	<i>1,000 Gallons</i>	<i>1,000 Gallons</i>	<i>Percent</i>
Ice Cream, Hard						
Jan	69,795	59,132	-15.3	69,795	59,132	-15.3
Feb	70,821	65,823	-7.1	140,616	124,955	-11.1
Mar	75,716	78,711	4.0	216,332	203,666	-5.9
Apr	84,367	77,391	-8.3	300,699	281,057	-6.5
May	80,900	74,820	-7.5	381,599	355,877	-6.7
Jun	84,698			466,297		
Jul	84,507			550,804		
Aug	77,382			628,186		
Sep	73,398			701,584		
Oct	69,761			771,345		
Nov	59,530			830,875		
Dec	56,091			886,966		

See footnote(s) at end of table.

--continued

**Dairy Products: Production by Product and Month,  
United States, 2003-2004<sup>1</sup> (continued)**

Product and Month	By Month			Cumulative		
	2003	2004	Change From 2003	2003	2004	Change From 2003
	<i>1,000 Gallons</i>	<i>1,000 Gallons</i>	<i>Percent</i>	<i>1,000 Gallons</i>	<i>1,000 Gallons</i>	<i>Percent</i>
<b>Ice Cream, Lowfat</b>						
Jan	23,544	25,947	10.2	23,544	25,947	10.2
Feb	24,272	26,832	10.5	47,816	52,779	10.4
Mar	29,618	36,689	23.9	77,434	89,468	15.5
Apr	32,249	38,960	20.8	109,683	128,428	17.1
May	34,534	37,881	9.7	144,217	166,309	15.3
Jun	36,902			181,119		
Jul	38,783			219,902		
Aug	33,504			253,406		
Sep	28,364			281,770		
Oct	27,413			309,183		
Nov	21,285			330,468		
Dec	22,466			352,934		
<b>Ice Cream, NF, Hard</b>						
Jan	1,440	1,430	-0.7	1,440	1,430	-0.7
Feb	1,382	1,482	7.2	2,822	2,912	3.2
Mar	1,593	1,693	6.3	4,415	4,605	4.3
Apr	1,830	1,972	7.8	6,245	6,577	5.3
May	1,839	1,795	-2.4	8,084	8,372	3.6
Jun	1,865			9,949		
Jul	1,858			11,807		
Aug	1,478			13,285		
Sep	1,564			14,849		
Oct	1,681			16,530		
Nov	1,344			17,874		
Dec	1,097			18,971		
<b>Sherbet, Hard</b>						
Jan	3,986	3,766	-5.5	3,986	3,766	-5.5
Feb	4,311	3,973	-7.8	8,297	7,739	-6.7
Mar	4,683	5,609	19.8	12,980	13,348	2.8
Apr	5,011	5,171	3.2	17,991	18,519	2.9
May	5,058	4,956	-2.0	23,049	23,475	1.8
Jun	5,582			28,631		
Jul	5,053			33,684		
Aug	4,552			38,236		
Sep	4,255			42,491		
Oct	3,697			46,188		
Nov	3,169			49,357		
Dec	3,209			52,566		

See footnote(s) at end of table.

--continued

**Dairy Products: Production by Product and Month,  
United States, 2003-2004<sup>1</sup> (continued)**

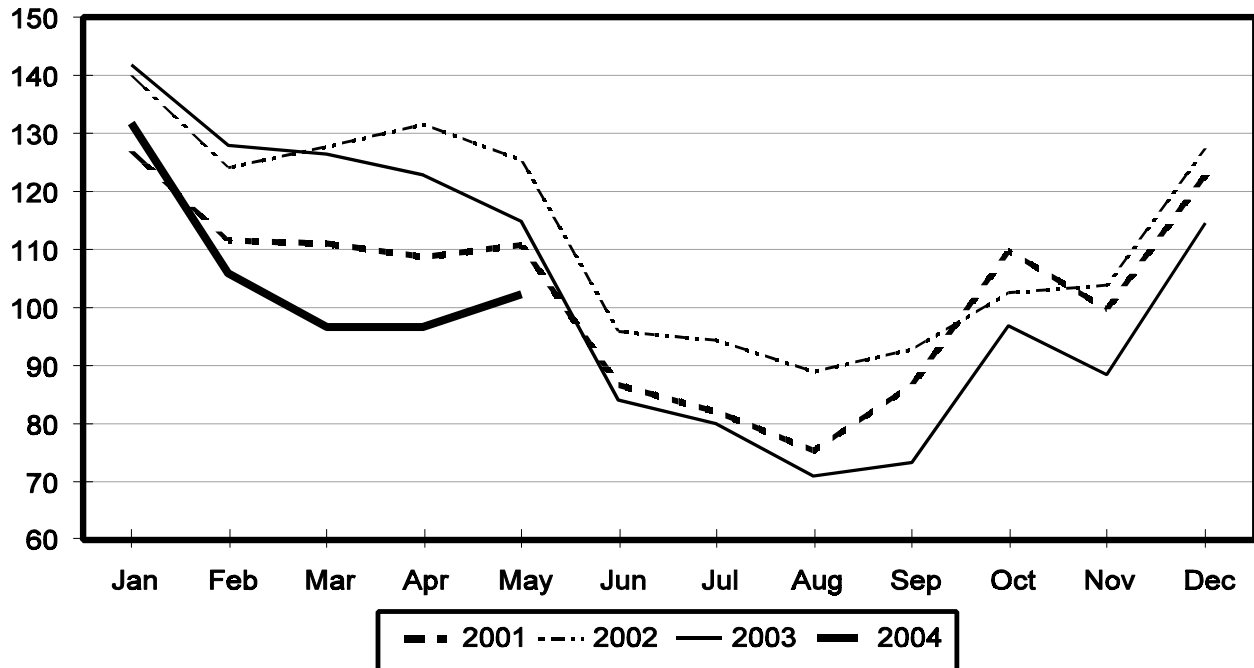
Product and Month	By Month			Cumulative		
	2003	2004	Change From 2003	2003	2004	Change From 2003
	<i>1,000 Gallons</i>	<i>1,000 Gallons</i>	<i>Percent</i>	<i>1,000 Gallons</i>	<i>1,000 Gallons</i>	<i>Percent</i>
Frozen Yogurt						
Jan	5,271	4,403	-16.5	5,271	4,403	-16.5
Feb	5,731	4,973	-13.2	11,002	9,376	-14.8
Mar	5,803	6,246	7.6	16,805	15,622	-7.0
Apr	7,025	6,016	-14.4	23,830	21,638	-9.2
May	6,558	6,321	-3.6	30,388	27,959	-8.0
Jun	6,211			36,599		
Jul	6,057			42,656		
Aug	5,953			48,609		
Sep	5,818			54,427		
Oct	5,282			59,709		
Nov	4,399			64,108		
Dec	3,916			68,024		

<sup>1</sup> April 2004 data revised.

<sup>2</sup> Excludes all modified dry whey products.

## Total Butter Production United States

Million Pounds



**Total Cheese, Excluding Cottage Cheese: Production by  
State and United States, May, 2003-2004**

State	May 2003	Apr <sup>1</sup> 2004	May 2004	Change From	
				May 2003	Apr 2004
	<i>1,000 Pounds</i>	<i>1,000 Pounds</i>	<i>1,000 Pounds</i>	<i>Percent</i>	<i>Percent</i>
CA	156,101	169,348	165,080	5.8	-2.5
IL	7,811	8,093	7,776	-0.4	-3.9
IA	15,316	13,203	13,921	-9.1	5.4
MA	67	87	80	19.4	-8.0
MN	55,241	53,923	54,833	-0.7	1.7
MO	7,765	8,644	10,028	29.1	16.0
NY	57,683	59,723	52,600	-8.8	-11.9
OH	14,360	15,069	14,922	3.9	-1.0
PA	30,855	32,916	31,692	2.7	-3.7
SD	14,095	13,085	12,985	-7.9	-0.8
UT	6,487	6,697	7,225	11.4	7.9
WI	193,941	196,785	192,725	-0.6	-2.1
Oth Sts <sup>2</sup>	177,305	179,205	180,277	1.7	0.6
US	737,027	756,778	744,144	1.0	-1.7
N Atlantic	101,486	108,938	99,459	-2.0	-8.7
S Atlantic	3,335	3,904	3,268	-2.0	-16.3
E N Central	231,284	235,205	229,770	-0.7	-2.3
W N Central	97,843	91,808	95,040	-2.9	3.5
S Central	7,262	7,648	7,603	4.7	-0.6
West	295,817	309,275	309,004	4.5	-0.1

<sup>1</sup> Revised.

<sup>2</sup> States not shown when fewer than 3 plants reported or individual plant operations could be disclosed. Percent change shown only when comparable States are included in the calculation.

**American Cheese: Production by State and United States, May, 2003-2004**

State	May 2003	Apr <sup>1</sup> 2004	May 2004	Change From	
				May 2003	Apr 2004
	<i>1,000 Pounds</i>	<i>1,000 Pounds</i>	<i>1,000 Pounds</i>	<i>Percent</i>	<i>Percent</i>
CA	68,650	71,843	70,695	3.0	-1.6
ID	40,428	43,422	45,481	12.5	4.7
IA	11,969	10,520	11,261	-5.9	7.0
MN	53,699	51,781	51,194	-4.7	-1.1
NY	8,831	8,557	9,051	2.5	5.8
OH	3,500	2,861	2,968	-15.2	3.7
OR	8,721	8,241	8,410	-3.6	2.1
SD	7,254	7,681	7,563	4.3	-1.5
WI	71,511	73,600	74,900	4.7	1.8
Oth Sts <sup>2</sup>	44,899	43,905	45,578	1.5	3.8
US	319,462	322,411	327,101	2.4	1.5
Atlantic	12,055	14,800	15,428	28.0	4.2
E N Central	76,026	77,763	78,709	3.5	1.2
W N Central	74,010	70,384	70,525	-4.7	0.2
S Central	4,217	4,354	4,155	-1.5	-4.6
West	153,154	155,110	158,284	3.3	2.0

<sup>1</sup> Revised.

<sup>2</sup> States not shown when fewer than 3 plants reported or individual plant operations could be disclosed. Percent change shown only when comparable States are included in the calculation.

**Cheddar Cheese: Production by State and United States, May, 2003-2004**

State	May 2003	Apr <sup>1</sup> 2004	May 2004	Change From	
				May 2003	Apr 2004
	<i>1,000 Pounds</i>	<i>1,000 Pounds</i>	<i>1,000 Pounds</i>	<i>Percent</i>	<i>Percent</i>
CA	47,706	50,615	47,780	0.2	-5.6
ID	18,360	21,190	22,403	22.0	5.7
MN	49,075	48,176	47,142	-3.9	-2.1
NY	8,668	8,439	8,953	3.3	6.1
SD	4,061	5,798	5,832	43.6	0.6
WI	55,361	57,800	58,200	5.1	0.7
Oth Sts <sup>2</sup>	55,893	51,349	56,425	1.0	9.9
US	239,124	243,367	246,735	3.2	1.4
Atlantic	11,431	14,037	14,502	26.9	3.3
E N Cen	57,764	59,856	60,429	4.6	1.0
W N Cen	61,033	61,611	61,009	-1.0	-1.0
S Cen	4,216	4,353	4,154	-1.5	-4.6
West	104,680	103,510	106,641	1.9	3.0

<sup>1</sup> Revised.

<sup>2</sup> States not shown when fewer than 3 plants reported or individual plant operations could be disclosed. Percent change shown only when comparable States are included in the calculation.

**Mozzarella Cheese: Production by State and United States, May, 2003-2004**

State	May 2003	Apr <sup>1</sup> 2004	May 2004	Change From	
				May 2003	Apr 2004
	<i>1,000 Pounds</i>	<i>1,000 Pounds</i>	<i>1,000 Pounds</i>	<i>Percent</i>	<i>Percent</i>
CA	67,335	74,941	74,139	10.1	-1.1
NY	17,698	15,646	15,722	-11.2	0.5
PA	17,971	18,339	18,196	1.3	-0.8
WI	65,105	65,500	60,900	-6.5	-7.0
Oth Sts <sup>2</sup>	78,079	75,251	75,918	-2.8	0.9
US	246,188	249,677	244,875	-0.5	-1.9
Atlantic <sup>3</sup>	44,113	41,881	41,177	-6.7	-1.7
E N Central	79,304	79,347	74,284	-6.3	-6.4
West	112,339	121,122	121,966	8.6	0.7

<sup>1</sup> Revised.

<sup>2</sup> States not shown when fewer than 3 plants reported or individual plant operations could be disclosed. Percent change shown only when comparable States are included in the calculation.

<sup>3</sup> Region totals may not add to U.S. when compiled regions could not be disclosed.

**Butter: Production by State and United States, May, 2003-2004**

State	May 2003	Apr <sup>1</sup> 2004	May 2004	Change From	
				May 2003	Apr 2004
	<i>1,000 Pounds</i>	<i>1,000 Pounds</i>	<i>1,000 Pounds</i>	<i>Percent</i>	<i>Percent</i>
CA	32,884	30,849	30,952	-5.9	0.3
NY	2,043	2,179	2,090	2.3	-4.1
PA	7,959	6,369	6,410	-19.5	0.6
WI	27,317	18,375	20,400	-25.3	11.0
Oth Sts <sup>2</sup>	44,692	38,749	42,541	-4.8	9.8
US	114,895	96,521	102,393	-10.9	6.1
N Atlantic <sup>3</sup>	14,184	12,644	12,474	-12.1	-1.3
E N Central	30,224	20,759	23,572	-22.0	13.6
W N Central	8,530	8,857	9,096	6.6	2.7
West	48,903	42,744	44,409	-9.2	3.9

<sup>1</sup> Revised.

<sup>2</sup> States not shown when fewer than 3 plants reported or individual plant operations could be disclosed. Percent change shown only when comparable States are included in the calculation.

<sup>3</sup> Region totals may not add to U.S. when compiled regions could not be disclosed.

**Nonfat Dry Milk, Human: Production by State  
and United States, May, 2003-2004**

State	May 2003	Apr <sup>1</sup> 2004	May 2004	Change From	
				May 2003	Apr 2004
	<i>1,000 Pounds</i>	<i>1,000 Pounds</i>	<i>1,000 Pounds</i>	<i>Percent</i>	<i>Percent</i>
CA	67,483	66,101	69,088	2.4	4.5
Oth Sts <sup>2</sup>	96,400	67,956	79,045	-18.0	16.3
US	163,883	134,057	148,133	-9.6	10.5
Atlantic	24,149	18,458	20,956	-13.2	13.5
E N Central	4,686	2,921	6,406	36.7	119.3
W N Central	7,028	5,147	6,308	-10.2	22.6
S Central	8,629	6,333	8,474	-1.8	33.8
West	119,391	101,198	105,989	-11.2	4.7

<sup>1</sup> Revised.

<sup>2</sup> States not shown when fewer than 3 plants reported or individual plant operations could be disclosed. Percent change shown only when comparable States are included in the calculation.

**Dry Whey, Human: Production by State  
and United States, May, 2003-2004**

State	May 2003	Apr <sup>1</sup> 2004	May 2004	Change From	
				May 2003	Apr 2004
	<i>1,000 Pounds</i>	<i>1,000 Pounds</i>	<i>1,000 Pounds</i>	<i>Percent</i>	<i>Percent</i>
CA	10,201	10,978	9,315	-8.7	-15.1
MN	9,995	4,263	4,412	-55.9	3.5
NY	11,043	10,337	10,640	-3.6	2.9
PA	9,287	9,019	8,838	-4.8	-2.0
UT	1,854	1,658	2,274	22.7	37.2
WI	27,154	26,000	25,700	-5.4	-1.2
Oth Sts <sup>2</sup>	21,285	22,156	21,438	0.7	-3.2
US	90,819	84,411	82,617	-9.0	-2.1
Atlantic	20,330	19,356	19,478	-4.2	0.6
Central	46,981	40,661	40,011	-14.8	-1.6
West	23,508	24,394	23,128	-1.6	-5.2

<sup>1</sup> Revised.

<sup>2</sup> States not shown when fewer than 3 plants reported or individual plant operations could be disclosed. Percent change shown only when comparable States are included in the calculation.

**Ice Cream, Hard: Production by State and United States, May, 2003-2004**

State	May 2003	Apr <sup>1</sup> 2004	May 2004	Change From	
				May 2003	Apr 2004
	<i>1,000 Gallons</i>	<i>1,000 Gallons</i>	<i>1,000 Gallons</i>	<i>Percent</i>	<i>Percent</i>
CA	11,250	10,310	11,608	3.2	12.6
FL	1,985	1,700	2,000	0.8	17.6
IL	3,498	3,667	3,066	-12.3	-16.4
IN	6,192	7,513	7,415	19.8	-1.3
MD	1,656	1,710	1,657	0.1	-3.1
MA	6,007	5,327	5,045	-16.0	-5.3
MI	1,413	1,100	1,420	0.5	29.1
MN	2,940	3,194	3,757	27.8	17.6
MO	1,586	1,826	1,917	20.9	5.0
NY	2,814	3,600	2,800	-0.5	-22.2
NC	1,880	1,528	1,294	-31.2	-15.3
OH	3,643	2,312	1,896	-48.0	-18.0
OR	1,207	1,320	1,330	10.2	0.8
PA	4,077	3,047	2,862	-29.8	-6.1
TN	1,732	1,562	1,458	-15.8	-6.7
TX	4,700	4,203	3,943	-16.1	-6.2
UT	1,534	2,398	2,094	36.5	-12.7
Oth Sts <sup>2</sup>	22,786	21,074	19,258	-15.5	-8.6
US	80,900	77,391	74,820	-7.5	-3.3
N Atlantic	15,968	15,169	13,761	-13.8	-9.3
S Atlantic	7,263	6,286	6,107	-15.9	-2.8
E N Central	15,719	15,547	14,743	-6.2	-5.2
W N Central	12,582	11,983	12,406	-1.4	3.5
S Central	10,572	9,971	9,140	-13.5	-8.3
West	18,796	18,435	18,663	-0.7	1.2

<sup>1</sup> Revised.

<sup>2</sup> States not shown when fewer than 3 plants reported or individual plant operations could be disclosed. Percent change shown only when comparable States are included in the calculation.

**Canned Milk and Dry Milk Products: Manufacturers' Shipments,  
Stocks, and Selling Prices, May, 2003-2004**

Product	May 2003	Apr 2004 <sup>1</sup>	May 2004	Change From	
				May 2003	Apr 2004
<b>Manufacturers' Shipments<sup>2</sup></b>					
	<i>1,000 Pounds</i>	<i>1,000 Pounds</i>	<i>1,000 Pounds</i>	<i>Percent</i>	<i>Percent</i>
Nonfat Dry Milk, Human	147,857	112,475	120,923	-18.2	7.5
<b>Manufacturers' Stocks End-of-Month<sup>3</sup></b>					
	<i>1,000 Pounds</i>	<i>1,000 Pounds</i>	<i>1,000 Pounds</i>	<i>Percent</i>	<i>Percent</i>
Canned Evaporated and Condensed Whole Milk	63,297	50,409	55,756	-11.9	10.6
Nonfat Dry Milk, Human	127,370	103,602	121,660	-4.5	17.4
Dry Buttermilk, Total	9,436	4,065	4,521	-52.1	11.2

<sup>1</sup> Revised.

<sup>2</sup> For dry products, shipments of bulk goods only.

<sup>3</sup> Stocks held by manufacturers at all points and in transit.



**Procedures and Reliability:** Estimates included in this report are based on data provided each month by manufacturers of these products. In 32 States, the State Departments of Agriculture assist in collection of data, which eliminates duplicate reporting and reduces respondent burden. Data are collected by mail, personal and telephone interviews following the close of each month. There were 1,126 manufacturers that made one or more products in 2003. Each month, reports are generally received from all dairy plants in States with small numbers of plants. In States with large numbers of plants, survey procedures are designed to obtain monthly reports from all large plants and from a sample of small plants. Monthly estimates are based upon returns from about 70 percent of the plants which account for 70 to 90 percent of the total production of major dairy products.

**Revision Policy:** Monthly estimates are subject to revision the month following the preliminary estimates. Annual estimates are published in the "**Dairy Products**" report published each April which includes any revisions made to current and previous year. An attempt is made to get information from all plants for preparing these estimates

## ACCESS TO REPORTS!!

---

For your convenience, there are several ways to obtain NASS reports, data products, and services:

### INTERNET ACCESS

All NASS reports are available free of charge on the worldwide Internet. For access, connect to the Internet and go to the NASS Home Page at: [www.usda.gov/nass/](http://www.usda.gov/nass/). Select "Today's Reports" or Publications and then Reports Calendar or Publications and then Search, by Title or Subject.

### E-MAIL SUBSCRIPTION

All NASS reports are available by subscription free of charge direct to your e-mail address. Starting with the NASS Home Page at [www.usda.gov/nass/](http://www.usda.gov/nass/), click on **Publications**, then click on the **Subscribe by E-mail** button which takes you to the page describing e-mail delivery of reports. Finally, click on **Go to the Subscription Page** and follow the instructions.

-----

### PRINTED REPORTS OR DATA PRODUCTS

**CALL OUR TOLL-FREE ORDER DESK: 800-999-6779 (U.S. and Canada)**  
**Other areas, please call 703-605-6220      FAX: 703-605-6900**  
**(Visa, MasterCard, check, or money order acceptable for payment.)**

-----

### ASSISTANCE

For **assistance** with general agricultural statistics or further information about NASS or its products or services, contact the **Agricultural Statistics Hotline** at **800-727-9540**, 7:30 a.m. to 4:00 p.m. ET, or e-mail: [nass@nass.usda.gov](mailto:nass@nass.usda.gov).

The United States Department of Agriculture (USDA) prohibits discrimination in all its programs on the basis of race, color, national origin, gender, religion, age, disability, political beliefs, sexual orientation, and marital or family status. (Not all prohibited bases apply to all programs.) Persons with disabilities who require alternative means for communication of program information (braille, large print, audiotape, etc.) should contact the USDA's TARGET Center at 202-720-2600 (voice and TDD).

To file a complaint of discrimination, write USDA, Director, Office of Civil Rights, Room 326-W, Whitten Building, 1400 Independence Avenue, SW, Washington, D.C., 20250-9410, or call 202-720-5964 (voice or TDD). USDA is an equal opportunity provider and employer.