

Released August 4, 2004, by the National Agricultural Statistics Service (NASS), Agricultural Statistics Board, U.S. Department of Agriculture. For information on *Dairy Products* call Kevin Pautler at (202) 720-9168, office hours 7:30 a.m. to 4:00 p.m. ET.

## June 2004 Highlights

**Total cheese** output (excluding cottage cheese) was 717 million pounds, 0.6 percent above June 2003 but 4.2 percent below May 2004.

**American type cheese** production totaled 310 million pounds, 1.6 percent above June 2003 but 6.7 percent below May 2004.

**Butter** production was 97.0 million pounds in June, 15.2 percent above June 2003 but 9.0 percent below May 2004.

**Frozen dessert:** (comparisons with June 2003)

Ice cream, Regular (hard) --- 85.8 million gallons, up 1.2 percent.

Ice cream, Lowfat (total) --- 44.4 million gallons, up 20.3 percent.

Ice cream, Nonfat (hard) --- 1.93 million gallons, up 3.4 percent.

Sherbet (hard) --- 5.86 million gallons, up 5.0 percent.

Frozen Yogurt (total) --- 6.46 million gallons, up 4.0 percent.

**Nonfat dry milk for human food:** (compared with June 2003) --- 143 million pounds, up 2.2 percent.

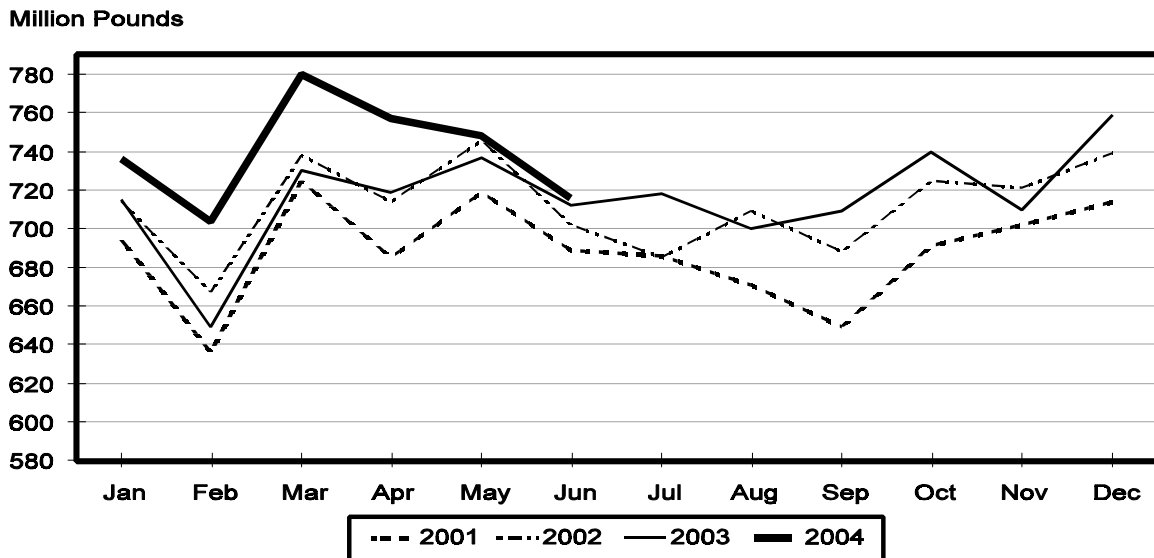
**Dry whey products:** (comparisons with June 2003)

Dry whey, human --- 79.0 million pounds, down 7.7 percent.

Dry whey, animal --- 7.62 million pounds, up 11.2 percent.

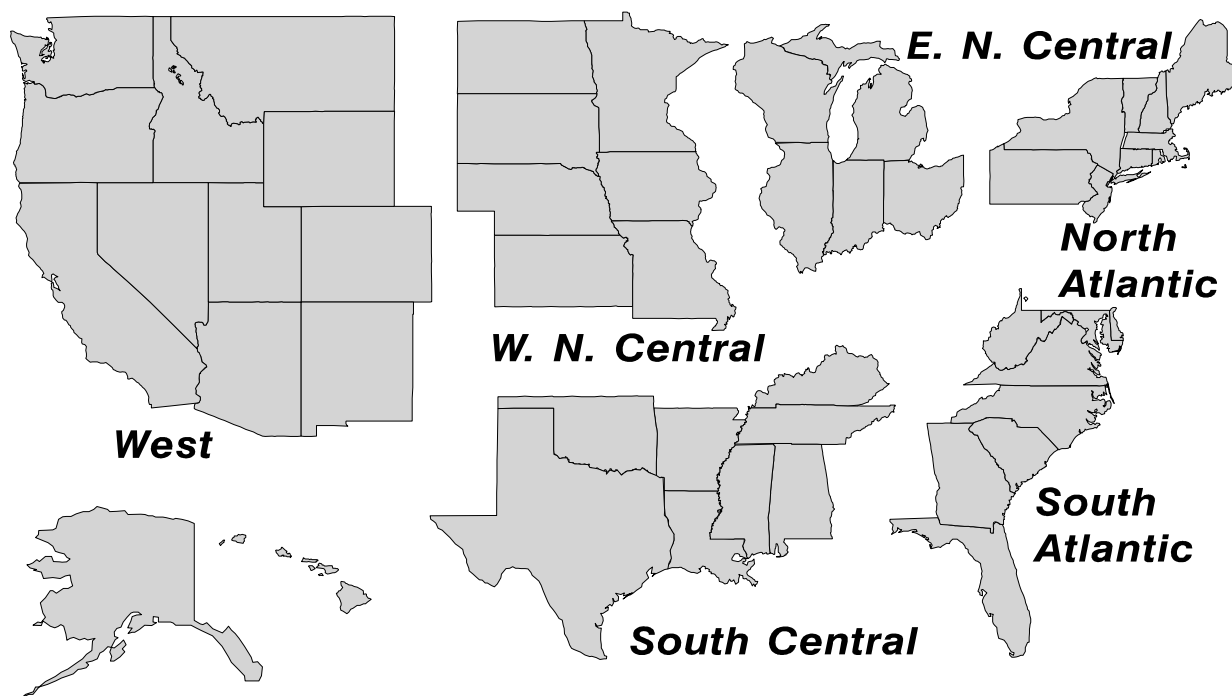
Dry whey, total --- 86.6 million pounds, down 6.3 percent.

## Total Cheese Production United States



## U. S. Geographic Regions Dairy Products

State totals are not published when fewer than 3 firms have reported or one firm comprises more than 60 percent of the State total. If we are not able to publish a region for confidentiality reasons, it will be combined with other regions when possible. For example, if North Atlantic can not be published, then it will be combined with South Atlantic to publish Atlantic. The West North Central and East North Central will be combined, if necessary, to form North Central. In the event that neither could be published, they may be combined with South Central to publish Central. Some tables will have only limited regions shown, therefore the regions may not add to the United States total.



## Contents

## Page

Dairy Products: Production by Product, United States, June, 2003-2004 .....	1
Whey and Modified Whey Products: Production, Stocks, and Prices, United States, June, 2003-2004 .....	2
Dairy Products: Production by Product and Month, United States, 2003-2004 .....	3
Select Commodities by State and United States, June, 2003-2004 .....	9
Canned Milk and Dry Milk Products: Manufacturer's Shipments, Stocks, and Selling Prices, June, 2003-2004 .....	13
Procedures and Reliability .....	14

**Dairy Products: Production by Product,  
United States, June, 2003-2004**

Product	Jun 2003	May 2004 <sup>1</sup>	Jun 2004	Change From	
				Jun 2003	May 2004
	<i>1,000 Pounds</i>	<i>1,000 Pounds</i>	<i>1,000 Pounds</i>	<i>Percent</i>	<i>Percent</i>
Butter	84,169	106,597	96,986	15.2	-9.0
Cheese					
American Types <sup>2</sup>	305,049	331,908	309,799	1.6	-6.7
Cheddar	229,741	251,316	232,722	1.3	-7.4
Swiss	22,146	24,244	23,439	5.8	-3.3
Brick and Muenster	7,516	5,950	6,395	-14.9	7.5
Cream and Neufchatel	52,165	50,070	50,559	-3.1	1.0
Hispanic	10,861	9,813	11,092	2.1	13.0
Mozzarella	236,757	244,528	235,830	-0.4	-3.6
Other Italian Types	56,283	57,934	57,005	1.3	-1.6
Total Italian Types	293,040	302,462	292,835	-0.1	-3.2
All Other Types	21,532	23,904	22,664	5.3	-5.2
Total	712,309	748,351	716,783	0.6	-4.2
Cottage Cheese, Curd <sup>3</sup>	36,342	35,351	38,968	7.2	10.2
Cottage Cheese, Cream <sup>4</sup>	33,694	30,688	31,654	-6.1	3.1
Cottage Cheese, Lowfat <sup>5</sup>	30,301	34,300	33,963	12.1	-1.0
Canned Evaporated and Condensed Whole Milk	56,688	46,398	46,885	-17.3	1.0
Dry Whole Milk	3,291	3,155	2,395	-27.2	-24.1
Nonfat Dry Milk, Human	139,992	151,108	143,025	2.2	-5.3
Dry Skim Milk, Animal	470	492	525	11.7	6.7
Dry Buttermilk	2,869	5,527	4,335	51.1	-21.6
Sour Cream	80,164	76,013	78,583	-2.0	3.4
Yogurt, Plain & Flavored	204,552	220,733	229,396	12.1	3.9
	<i>1,000 Gallons</i>	<i>1,000 Gallons</i>	<i>1,000 Gallons</i>	<i>Percent</i>	<i>Percent</i>
Frozen Products					
Ice Cream, Hard	84,698	75,073	85,753	1.2	14.2
Ice Cream, Lowfat, Hard	9,795	9,913	11,197	14.3	13.0
Ice Cream, Lowfat, Soft	27,107	28,946	33,191	22.4	14.7
Ice Cream, Lowfat, Total	36,902	38,859	44,388	20.3	14.2
Ice Cream, Nonfat, Hard	1,865	1,795	1,928	3.4	7.4
Sherbet, Hard	5,582	4,944	5,862	5.0	18.6
Water and Juice Ices	6,768	6,246	6,141	-9.3	-1.7
Frozen Yogurt, Total	6,211	6,282	6,462	4.0	2.9
Regular & Lowfat, Hard	1,895	1,575	1,749	-7.7	11.0
Nonfat, Hard	1,206	883	1,140	-5.5	29.1
Other Frozen Dairy Products	900	789	951	5.7	20.5
Mix for Frozen Products					
Ice Cream Mix	50,637	43,860	50,364	-0.5	14.8
Ice Cream, Lowfat, Mix	22,345	21,571	24,645	10.3	14.3
Ice Cream, Nonfat, Mix	1,283	1,248	1,205	-6.1	-3.4
Sherbet Mix	4,031	3,352	4,079	1.2	21.7
Yogurt Mix	3,800	3,695	3,801		2.9

<sup>1</sup> Revised.

<sup>2</sup> Includes Cheddar, Colby, Monterey, and Jack.

<sup>3</sup> Mostly used for processing into cream or lowfat cottage cheese.

<sup>4</sup> Fat content 4 percent or more.

<sup>5</sup> Fat content less than 4 percent.

**Whey and Modified Whey Products: Production, Stocks,  
and Prices, United States, June, 2003-2004**

Product	Jun 2003	May 2004 <sup>1</sup>	Jun 2004	Change From	
				Jun 2003	May 2004
<b>Production</b>					
	<i>1,000 Pounds</i>	<i>1,000 Pounds</i>	<i>1,000 Pounds</i>	<i>Percent</i>	<i>Percent</i>
Condensed Whey, Solids Content <sup>2</sup>					
Sweet-Type, Human	8,930	8,310	7,646	-14.4	-8.0
Dry Whey Products					
Dry Whey, Human	85,555	82,294	78,975	-7.7	-4.0
Dry Whey, Animal	6,855	8,197	7,624	11.2	-7.0
Dry Whey, Total	92,410	90,491	86,599	-6.3	-4.3
Reduced Lactose and Minerals					
Human Food	3,397	3,015	2,922	-14.0	-3.1
Animal Feed <sup>3</sup>	3,257	3,787	3,838	17.8	1.3
Lactose, Human and Animal	48,178	57,979	56,736	17.8	-2.1
Whey					
Protein Concentrate, Human <sup>4</sup>	23,006	25,027	24,405	6.1	-2.5
Protein Concentrate, Animal <sup>4</sup>	3,167	3,673	3,708	17.1	1.0
<b>Manufacturers' Stocks End-of-Month <sup>5</sup></b>					
	<i>1,000 Pounds</i>	<i>1,000 Pounds</i>	<i>1,000 Pounds</i>	<i>Percent</i>	<i>Percent</i>
Dry Whey Products					
Dry Whey, Human	45,042	33,588	35,784	-20.6	6.5
Dry Whey, Animal	1,805	4,886	5,547	207.3	13.5
Reduced Lactose and Minerals					
Human and Animal <sup>6</sup>	9,863	7,069	6,336	-35.8	-10.4
Lactose, Human and Animal	44,412	55,447	63,464	42.9	14.5
Whey Protein Concentrate, Human <sup>4</sup>	29,160	18,098	19,074	-34.6	5.4
Whey Protein Concentrate, Animal <sup>4</sup>	1,872	1,748	2,082	11.2	19.1
<b>Manufacturers' Selling Price <sup>7</sup></b>					
	<i>Cents per Pound</i>	<i>Cents per Pound</i>	<i>Cents per Pound</i>	<i>Cents Change</i>	<i>Cents Change</i>
Dry Whey, Animal	11.0	26.9	27.3	16.3	0.4

<sup>1</sup> Revised.

<sup>2</sup> Final marketable product only. Does not include quantity used or shipped to another plant for further processing into dry whey or modified whey products. Does not include sweet-type, animal whey.

<sup>3</sup> Not shown when fewer than 3 plants reported or individual plant operations could be disclosed.

<sup>4</sup> Whey Protein Concentrate, 25.0 to 89.9 percent.

<sup>5</sup> Stocks held by manufacturers at all points and in transit.

<sup>6</sup> Reduced lactose and minerals stocks combined to avoid disclosure of individual operations.

<sup>7</sup> Prices for bulk goods, f.o.b. plant. Average monthly prices reported by firms.

**Dairy Products: Production by Product and Month,  
United States, 2003-2004 <sup>1</sup>**

Product and Month	By Month			Cumulative		
	2003	2004	Change From 2003	2003	2004	Change From 2003
	<i>1,000 Pounds</i>	<i>1,000 Pounds</i>	<i>Percent</i>	<i>1,000 Pounds</i>	<i>1,000 Pounds</i>	<i>Percent</i>
<b>Total Cheese</b>						
Jan	714,838	735,851	2.9	714,838	735,851	2.9
Feb	648,644	704,288	8.6	1,363,482	1,440,139	5.6
Mar	730,287	779,599	6.8	2,093,769	2,219,738	6.0
Apr	718,834	756,778	5.3	2,812,603	2,976,516	5.8
May	737,027	748,351	1.5	3,549,630	3,724,867	4.9
Jun	712,309	716,783	0.6	4,261,939	4,441,650	4.2
Jul	718,258			4,980,197		
Aug	700,132			5,680,329		
Sep	708,708			6,389,037		
Oct	740,016			7,129,053		
Nov	710,036			7,839,089		
Dec	758,887			8,597,976		
<b>American Cheese</b>						
Jan	318,428	321,380	0.9	318,428	321,380	0.9
Feb	286,295	297,241	3.8	604,723	618,621	2.3
Mar	317,833	324,194	2.0	922,556	942,815	2.2
Apr	307,087	322,411	5.0	1,229,643	1,265,226	2.9
May	319,462	331,908	3.9	1,549,105	1,597,134	3.1
Jun	305,049	309,799	1.6	1,854,154	1,906,933	2.8
Jul	306,675			2,160,829		
Aug	299,117			2,459,946		
Sep	292,222			2,752,168		
Oct	305,067			3,057,235		
Nov	291,085			3,348,320		
Dec	321,189			3,669,509		
<b>Cheddar Cheese</b>						
Jan	246,690	244,808	-0.8	246,690	244,808	-0.8
Feb	219,377	223,308	1.8	466,067	468,116	0.4
Mar	240,590	241,804	0.5	706,657	709,920	0.5
Apr	231,685	243,367	5.0	938,342	953,287	1.6
May	239,124	251,316	5.1	1,177,466	1,204,603	2.3
Jun	229,741	232,722	1.3	1,407,207	1,437,325	2.1
Jul	229,870			1,637,077		
Aug	223,183			1,860,260		
Sep	214,603			2,074,863		
Oct	220,878			2,295,741		
Nov	212,629			2,508,370		
Dec	240,972			2,749,342		

See footnote(s) at end of table.

--continued

**Dairy Products: Production by Product and Month,  
United States, 2003-2004<sup>1</sup> (continued)**

Product and Month	By Month			Cumulative		
	2003	2004	Change From 2003	2003	2004	Change From 2003
	<i>1,000 Pounds</i>	<i>1,000 Pounds</i>	<i>Percent</i>	<i>1,000 Pounds</i>	<i>1,000 Pounds</i>	<i>Percent</i>
Italian Cheese						
Jan	292,100	307,046	5.1	292,100	307,046	5.1
Feb	265,492	299,501	12.8	557,592	606,547	8.8
Mar	299,783	333,416	11.2	857,375	939,963	9.6
Apr	297,684	309,418	3.9	1,155,059	1,249,381	8.2
May	302,565	302,462		1,457,624	1,551,843	6.5
Jun	293,040	292,835	-0.1	1,750,664	1,844,678	5.4
Jul	293,823			2,044,487		
Aug	288,787			2,333,274		
Sep	287,912			2,621,186		
Oct	297,437			2,918,623		
Nov	289,184			3,207,807		
Dec	314,242			3,522,049		
Mozzarella						
Jan	231,028	244,677	5.9	231,028	244,677	5.9
Feb	211,519	240,013	13.5	442,547	484,690	9.5
Mar	237,475	262,896	10.7	680,022	747,586	9.9
Apr	236,320	249,677	5.7	916,342	997,263	8.8
May	246,188	244,528	-0.7	1,162,530	1,241,791	6.8
Jun	236,757	235,830	-0.4	1,399,287	1,477,621	5.6
Jul	236,511			1,635,798		
Aug	232,518			1,868,316		
Sep	225,454			2,093,770		
Oct	232,061			2,325,831		
Nov	230,315			2,556,146		
Dec	249,953			2,806,099		
Other Italian						
Jan	61,072	62,369	2.1	61,072	62,369	2.1
Feb	53,973	59,488	10.2	115,045	121,857	5.9
Mar	62,308	70,520	13.2	177,353	192,377	8.5
Apr	61,364	59,741	-2.6	238,717	252,118	5.6
May	56,377	57,934	2.8	295,094	310,052	5.1
Jun	56,283	57,005	1.3	351,377	367,057	4.5
Jul	57,312			408,689		
Aug	56,269			464,958		
Sep	62,458			527,416		
Oct	65,376			592,792		
Nov	58,869			651,661		
Dec	64,289			715,950		

See footnote(s) at end of table.

--continued

**Dairy Products: Production by Product and Month,  
United States, 2003-2004 <sup>1</sup> (continued)**

Product and Month	By Month			Cumulative		
	2003	2004	Change From 2003	2003	2004	Change From 2003
	<i>1,000 Pounds</i>	<i>1,000 Pounds</i>	<i>Percent</i>	<i>1,000 Pounds</i>	<i>1,000 Pounds</i>	<i>Percent</i>
Butter						
Jan	141,912	131,859	-7.1	141,912	131,859	-7.1
Feb	128,086	105,788	-17.4	269,998	237,647	-12.0
Mar	126,400	96,741	-23.5	396,398	334,388	-15.6
Apr	122,844	96,521	-21.4	519,242	430,909	-17.0
May	114,895	106,597	-7.2	634,137	537,506	-15.2
Jun	84,169	96,986	15.2	718,306	634,492	-11.7
Jul	80,050			798,356		
Aug	70,916			869,272		
Sep	73,267			942,539		
Oct	96,784			1,039,323		
Nov	88,436			1,127,759		
Dec	114,599			1,242,358		
Nonfat Dry Milk, Human						
Jan	141,299	120,490	-14.7	141,299	120,490	-14.7
Feb	137,213	115,772	-15.6	278,512	236,262	-15.2
Mar	155,430	118,018	-24.1	433,942	354,280	-18.4
Apr	159,997	134,057	-16.2	593,939	488,337	-17.8
May	163,883	151,108	-7.8	757,822	639,445	-15.6
Jun	139,992	143,025	2.2	897,814	782,470	-12.8
Jul	127,915			1,025,729		
Aug	107,060			1,132,789		
Sep	96,774			1,229,563		
Oct	106,887			1,336,450		
Nov	110,865			1,447,315		
Dec	141,726			1,589,041		
Total Dry Whey <sup>2</sup>						
Jan	95,268	87,073	-8.6	95,268	87,073	-8.6
Feb	86,466	83,904	-3.0	181,734	170,977	-5.9
Mar	98,511	93,745	-4.8	280,245	264,722	-5.5
Apr	92,801	91,978	-0.9	373,046	356,700	-4.4
May	97,256	90,491	-7.0	470,302	447,191	-4.9
Jun	92,410	86,599	-6.3	562,712	533,790	-5.1
Jul	93,709			656,421		
Aug	87,643			744,064		
Sep	84,812			828,876		
Oct	86,176			915,052		
Nov	82,343			997,395		
Dec	88,948			1,086,343		

See footnote(s) at end of table.

--continued



**Dairy Products: Production by Product and Month,  
United States, 2003-2004<sup>1</sup> (continued)**

Product and Month	By Month			Cumulative		
	2003	2004	Change From 2003	2003	2004	Change From 2003
	<i>1,000 Pounds</i>	<i>1,000 Pounds</i>	<i>Percent</i>	<i>1,000 Pounds</i>	<i>1,000 Pounds</i>	<i>Percent</i>
Cream Cottage Cheese						
Jan	32,071	31,897	-0.5	32,071	31,897	-0.5
Feb	29,246	30,642	4.8	61,317	62,539	2.0
Mar	31,570	34,940	10.7	92,887	97,479	4.9
Apr	33,847	31,360	-7.3	126,734	128,839	1.7
May	32,722	30,688	-6.2	159,456	159,527	
Jun	33,694	31,654	-6.1	193,150	191,181	-1.0
Jul	34,767			227,917		
Aug	34,175			262,092		
Sep	33,043			295,135		
Oct	32,276			327,411		
Nov	28,723			356,134		
Dec	29,042			385,176		
Lowfat Cottage Cheese						
Jan	31,263	31,839	1.8	31,263	31,839	1.8
Feb	29,543	30,591	3.5	60,806	62,430	2.7
Mar	32,003	35,649	11.4	92,809	98,079	5.7
Apr	32,910	32,172	-2.2	125,719	130,251	3.6
May	32,039	34,300	7.1	157,758	164,551	4.3
Jun	30,301	33,963	12.1	188,059	198,514	5.6
Jul	32,910			220,969		
Aug	33,182			254,151		
Sep	33,974			288,125		
Oct	33,398			321,523		
Nov	29,728			351,251		
Dec	28,782			380,033		
	<i>1,000 Gallons</i>	<i>1,000 Gallons</i>	<i>Percent</i>	<i>1,000 Gallons</i>	<i>1,000 Gallons</i>	<i>Percent</i>
Ice Cream, Hard						
Jan	69,795	59,132	-15.3	69,795	59,132	-15.3
Feb	70,821	65,823	-7.1	140,616	124,955	-11.1
Mar	75,716	78,711	4.0	216,332	203,666	-5.9
Apr	84,367	77,391	-8.3	300,699	281,057	-6.5
May	80,900	75,073	-7.2	381,599	356,130	-6.7
Jun	84,698	85,753	1.2	466,297	441,883	-5.2
Jul	84,507			550,804		
Aug	77,382			628,186		
Sep	73,398			701,584		
Oct	69,761			771,345		
Nov	59,530			830,875		
Dec	56,091			886,966		

See footnote(s) at end of table.

--continued

**Dairy Products: Production by Product and Month,  
United States, 2003-2004<sup>1</sup> (continued)**

Product and Month	By Month			Cumulative		
	2003	2004	Change From 2003	2003	2004	Change From 2003
	<i>1,000 Gallons</i>	<i>1,000 Gallons</i>	<i>Percent</i>	<i>1,000 Gallons</i>	<i>1,000 Gallons</i>	<i>Percent</i>
<b>Ice Cream, Lowfat</b>						
Jan	23,544	25,947	10.2	23,544	25,947	10.2
Feb	24,272	26,832	10.5	47,816	52,779	10.4
Mar	29,618	36,689	23.9	77,434	89,468	15.5
Apr	32,249	38,960	20.8	109,683	128,428	17.1
May	34,534	38,859	12.5	144,217	167,287	16.0
Jun	36,902	44,388	20.3	181,119	211,675	16.9
Jul	38,783			219,902		
Aug	33,504			253,406		
Sep	28,364			281,770		
Oct	27,413			309,183		
Nov	21,285			330,468		
Dec	22,466			352,934		
<b>Ice Cream, NF, Hard</b>						
Jan	1,440	1,430	-0.7	1,440	1,430	-0.7
Feb	1,382	1,482	7.2	2,822	2,912	3.2
Mar	1,593	1,693	6.3	4,415	4,605	4.3
Apr	1,830	1,972	7.8	6,245	6,577	5.3
May	1,839	1,795	-2.4	8,084	8,372	3.6
Jun	1,865	1,928	3.4	9,949	10,300	3.5
Jul	1,858			11,807		
Aug	1,478			13,285		
Sep	1,564			14,849		
Oct	1,681			16,530		
Nov	1,344			17,874		
Dec	1,097			18,971		
<b>Sherbet, Hard</b>						
Jan	3,986	3,766	-5.5	3,986	3,766	-5.5
Feb	4,311	3,973	-7.8	8,297	7,739	-6.7
Mar	4,683	5,609	19.8	12,980	13,348	2.8
Apr	5,011	5,171	3.2	17,991	18,519	2.9
May	5,058	4,944	-2.3	23,049	23,463	1.8
Jun	5,582	5,862	5.0	28,631	29,325	2.4
Jul	5,053			33,684		
Aug	4,552			38,236		
Sep	4,255			42,491		
Oct	3,697			46,188		
Nov	3,169			49,357		
Dec	3,209			52,566		

See footnote(s) at end of table.

--continued

**Dairy Products: Production by Product and Month,  
United States, 2003-2004 <sup>1</sup> (continued)**

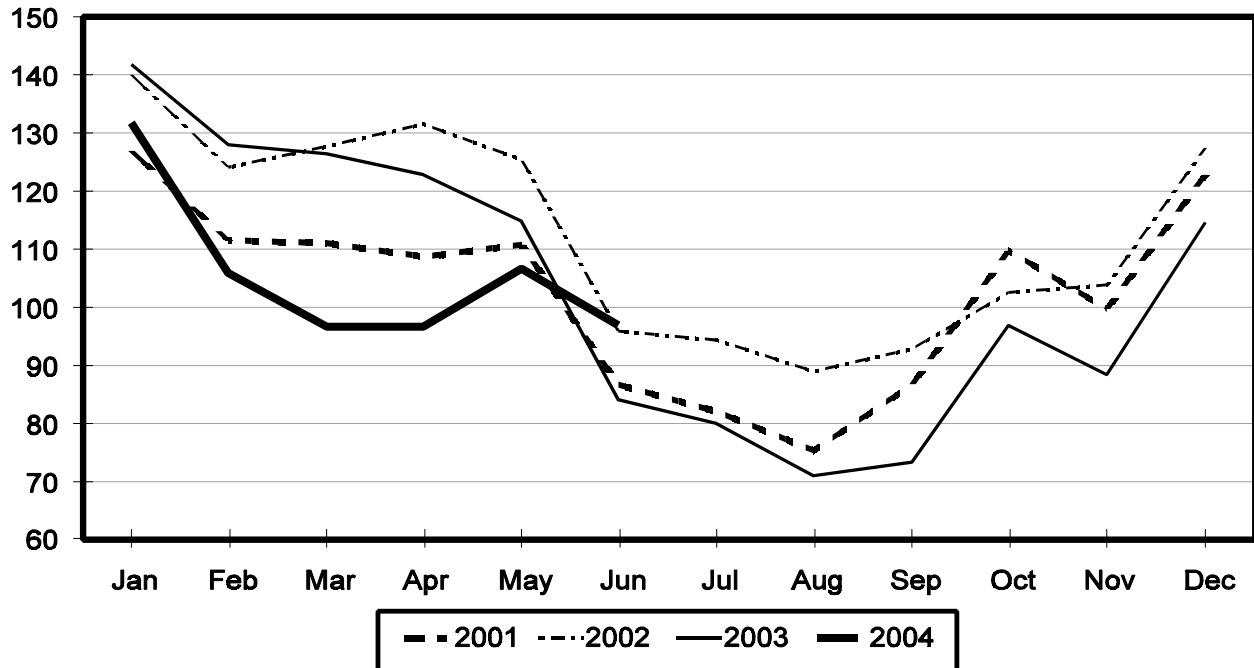
Product and Month	By Month			Cumulative		
	2003	2004	Change From 2003	2003	2004	Change From 2003
	<i>1,000 Gallons</i>	<i>1,000 Gallons</i>	<i>Percent</i>	<i>1,000 Gallons</i>	<i>1,000 Gallons</i>	<i>Percent</i>
Frozen Yogurt						
Jan	5,271	4,403	-16.5	5,271	4,403	-16.5
Feb	5,731	4,973	-13.2	11,002	9,376	-14.8
Mar	5,803	6,246	7.6	16,805	15,622	-7.0
Apr	7,025	6,016	-14.4	23,830	21,638	-9.2
May	6,558	6,282	-4.2	30,388	27,920	-8.1
Jun	6,211	6,462	4.0	36,599	34,382	-6.1
Jul	6,057			42,656		
Aug	5,953			48,609		
Sep	5,818			54,427		
Oct	5,282			59,709		
Nov	4,399			64,108		
Dec	3,916			68,024		

<sup>1</sup> May 2004 data revised.

<sup>2</sup> Excludes all modified dry whey products.

## Total Butter Production United States

Million Pounds



**Total Cheese, Excluding Cottage Cheese: Production by  
State and United States, June, 2003-2004**

State	Jun 2003	May <sup>1</sup> 2004	Jun 2004	Change From	
				Jun 2003	May 2004
	<i>1,000 Pounds</i>	<i>1,000 Pounds</i>	<i>1,000 Pounds</i>	<i>Percent</i>	<i>Percent</i>
CA	155,499	165,080	161,355	3.8	-2.3
IL	7,493	7,401	7,941	6.0	7.3
IA	12,449	13,985	12,937	3.9	-7.5
MA	73	80	73		-8.8
MN	52,204	56,712	52,068	-0.3	-8.2
MO	8,238	10,026	7,300	-11.4	-27.2
NY	53,485	52,603	52,789	-1.3	0.4
OH	14,208	14,922	14,564	2.5	-2.4
PA	32,071	31,692	31,895	-0.5	0.6
SD	13,136	12,985	13,063	-0.6	0.6
UT	6,822	7,225	5,995	-12.1	-17.0
WI	192,444	192,824	189,009	-1.8	-2.0
Oth Sts <sup>2</sup>	164,187	182,816	167,794	2.2	-8.2
US	712,309	748,351	716,783	0.6	-4.2
N Atlantic	100,625	102,015	98,939	-1.7	-3.0
S Atlantic	3,047	3,268	2,965	-2.7	-9.3
E N Central	228,181	229,494	224,260	-1.7	-2.3
W N Central	88,183	97,004	88,590	0.5	-8.7
S Central	8,060	7,603	7,929	-1.6	4.3
West	284,213	308,967	294,100	3.5	-4.8

<sup>1</sup> Revised.

<sup>2</sup> States not shown when fewer than 3 plants reported or individual plant operations could be disclosed. Percent change shown only when comparable States are included in the calculation.

**American Cheese: Production by State and United States, June, 2003-2004**

State	Jun 2003	May <sup>1</sup> 2004	Jun 2004	Change From	
				Jun 2003	May 2004
	<i>1,000 Pounds</i>	<i>1,000 Pounds</i>	<i>1,000 Pounds</i>	<i>Percent</i>	<i>Percent</i>
CA	65,862	70,695	67,571	2.6	-4.4
ID	37,349	45,481	43,241	15.8	-4.9
IA	10,300	11,261	10,073	-2.2	-10.5
MN	50,247	53,431	49,819	-0.9	-6.8
NY	7,662	9,051	7,780	1.5	-14.0
OH	3,160	2,968	2,747	-13.1	-7.4
OR	8,090	8,410	8,282	2.4	-1.5
SD	7,043	7,563	7,041		-6.9
WI	69,452	74,900	73,125	5.3	-2.4
Oth Sts <sup>2</sup>	45,884	48,148	40,120	-12.6	-16.7
US	305,049	331,908	309,799	1.6	-6.7
Atlantic	12,487	17,983	12,371	-0.9	-31.2
E N Central	73,438	78,709	76,655	4.4	-2.6
W N Central	68,561	72,778	67,473	-1.6	-7.3
S Central	5,005	4,155	4,672	-6.7	12.4
West	145,558	158,283	148,628	2.1	-6.1

<sup>1</sup> Revised.

<sup>2</sup> States not shown when fewer than 3 plants reported or individual plant operations could be disclosed. Percent change shown only when comparable States are included in the calculation.

**Cheddar Cheese: Production by State and United States, June, 2003-2004**

State	Jun 2003	May <sup>1</sup> 2004	Jun 2004	Change From	
				Jun 2003	May 2004
	<i>1,000 Pounds</i>	<i>1,000 Pounds</i>	<i>1,000 Pounds</i>	<i>Percent</i>	<i>Percent</i>
CA	44,095	47,780	44,304	0.5	-7.3
ID	16,430	22,403	21,310	29.7	-4.9
MN	46,354	49,159	45,139	-2.6	-8.2
NY	7,526	8,953	7,677	2.0	-14.3
SD	5,074	5,832	5,482	8.0	-6.0
WI	54,349	58,200	58,300	7.3	0.2
Oth Sts <sup>2</sup>	55,913	58,989	50,510	-9.7	-14.4
US	229,741	251,316	232,722	1.3	-7.4
Atlantic	11,949	17,057	11,843	-0.9	-30.6
E N Cen	56,646	60,429	60,442	6.7	
W N Cen	58,713	63,036	57,796	-1.6	-8.3
S Cen	5,004	4,154	4,671	-6.7	12.4
West	97,429	106,640	97,970	0.6	-8.1

<sup>1</sup> Revised.

<sup>2</sup> States not shown when fewer than 3 plants reported or individual plant operations could be disclosed. Percent change shown only when comparable States are included in the calculation.

**Mozzarella Cheese: Production by State and United States, June, 2003-2004**

State	Jun 2003	May <sup>1</sup> 2004	Jun 2004	Change From	
				Jun 2003	May 2004
	<i>1,000 Pounds</i>	<i>1,000 Pounds</i>	<i>1,000 Pounds</i>	<i>Percent</i>	<i>Percent</i>
CA	67,869	74,139	70,509	3.9	-4.9
NY	16,940	15,722	13,945	-17.7	-11.3
PA	17,175	18,196	17,613	2.6	-3.2
WI	66,659	60,900	63,940	-4.1	5.0
Oth Sts <sup>2</sup>	68,114	75,571	69,823	2.5	-7.6
US	236,757	244,528	235,830	-0.4	-3.6
Atlantic <sup>3</sup>	42,863	41,177	39,269	-8.4	-4.6
E N Central	79,949	74,284	76,025	-4.9	2.3
West	107,117	121,966	112,863	5.4	-7.5

<sup>1</sup> Revised.

<sup>2</sup> States not shown when fewer than 3 plants reported or individual plant operations could be disclosed. Percent change shown only when comparable States are included in the calculation.

<sup>3</sup> Region totals may not add to U.S. when compiled regions could not be disclosed.

**Butter: Production by State and United States, June, 2003-2004**

State	Jun 2003	May <sup>1</sup> 2004	Jun 2004	Change From	
				Jun 2003	May 2004
	<i>1,000 Pounds</i>	<i>1,000 Pounds</i>	<i>1,000 Pounds</i>	<i>Percent</i>	<i>Percent</i>
CA	23,009	31,540	29,976	30.3	-5.0
NY	1,570	1,996	1,501	-4.4	-24.8
PA	5,453	6,410	5,527	1.4	-13.8
WI	21,188	25,932	25,540	20.5	-1.5
Oth Sts <sup>2</sup>	32,949	40,719	34,442	4.5	-15.4
US	84,169	106,597	96,986	15.2	-9.0
N Atlantic <sup>3</sup>	9,668	12,153	10,445	8.0	-14.1
E N Central	22,927	28,251	26,828	17.0	-5.0
W N Central	7,172	9,096	7,362	2.6	-19.1
West	36,864	44,996	43,022	16.7	-4.4

<sup>1</sup> Revised.

<sup>2</sup> States not shown when fewer than 3 plants reported or individual plant operations could be disclosed. Percent change shown only when comparable States are included in the calculation.

<sup>3</sup> Region totals may not add to U.S. when compiled regions could not be disclosed.

**Nonfat Dry Milk, Human: Production by State  
and United States, June, 2003-2004**

State	Jun 2003	May <sup>1</sup> 2004	Jun 2004	Change From	
				Jun 2003	May 2004
	<i>1,000 Pounds</i>	<i>1,000 Pounds</i>	<i>1,000 Pounds</i>	<i>Percent</i>	<i>Percent</i>
CA	59,693	70,400	68,152	14.2	-3.2
Oth Sts <sup>2</sup>	80,299	80,708	74,873	-6.8	-7.2
US	139,992	151,108	143,025	2.2	-5.3
Atlantic	14,586	22,386	18,298	25.4	-18.3
E N Central	4,366	6,406	5,841	33.8	-8.8
W N Central	6,838	6,739	6,015	-12.0	-10.7
S Central	7,127	8,395	7,821	9.7	-6.8
West	107,075	107,182	105,050	-1.9	-2.0

<sup>1</sup> Revised.

<sup>2</sup> States not shown when fewer than 3 plants reported or individual plant operations could be disclosed. Percent change shown only when comparable States are included in the calculation.

**Dry Whey, Human: Production by State  
and United States, June, 2003-2004**

State	Jun 2003	May <sup>1</sup> 2004	Jun 2004	Change From	
				Jun 2003	May 2004
	<i>1,000 Pounds</i>	<i>1,000 Pounds</i>	<i>1,000 Pounds</i>	<i>Percent</i>	<i>Percent</i>
CA	10,459	9,315	9,205	-12.0	-1.2
MN	9,383	4,412	4,263	-54.6	-3.4
NY	10,197	10,640	9,977	-2.2	-6.2
PA	8,317	8,838	8,452	1.6	-4.4
UT	2,106	2,274	2,098	-0.4	-7.7
WI	25,533	25,377	24,791	-2.9	-2.3
Oth Sts <sup>2</sup>	19,560	21,438	20,189	3.2	-5.8
US	85,555	82,294	78,975	-7.7	-4.0
Atlantic	18,514	19,478	18,429	-0.5	-5.4
Central	43,751	39,688	38,542	-11.9	-2.9
West	23,290	23,128	22,004	-5.5	-4.9

<sup>1</sup> Revised.

<sup>2</sup> States not shown when fewer than 3 plants reported or individual plant operations could be disclosed. Percent change shown only when comparable States are included in the calculation.

**Ice Cream, Hard: Production by State and United States, June, 2003-2004**

State	Jun 2003	May <sup>1</sup> 2004	Jun 2004	Change From	
				Jun 2003	May 2004
	<i>1,000 Gallons</i>	<i>1,000 Gallons</i>	<i>1,000 Gallons</i>	<i>Percent</i>	<i>Percent</i>
CA	13,324	11,635	12,032	-9.7	3.4
FL	2,474	2,000	2,050	-17.1	2.5
IL	3,347	3,066	3,876	15.8	26.4
IN	7,685	7,415	8,527	11.0	15.0
MD	1,671	1,657	1,672	0.1	0.9
MA	5,723	5,045	4,905	-14.3	-2.8
MI	1,429	1,420	1,423	-0.4	0.2
MN	4,108	3,757	4,457	8.5	18.6
MO	1,625	1,917	1,942	19.5	1.3
NY	2,682	2,800	3,100	15.6	10.7
NC	1,656	1,294	1,742	5.2	34.6
OH	3,038	2,181	2,189	-27.9	0.4
OR	1,399	1,330	1,395	-0.3	4.9
PA	4,134	2,862	4,926	19.2	72.1
TN	1,549	1,458	1,472	-5.0	1.0
TX	4,300	3,943	4,549	5.8	15.4
UT	1,451	2,036	2,443	68.4	20.0
Oth Sts <sup>2</sup>	23,103	19,257	23,053	-0.2	19.7
US	84,698	75,073	85,753	1.2	14.2
N Atlantic	15,324	13,761	16,265	6.1	18.2
S Atlantic	7,129	6,107	6,628	-7.0	8.5
E N Central	16,431	15,028	16,938	3.1	12.7
W N Central	14,702	12,406	15,474	5.3	24.7
S Central	10,237	9,140	10,701	4.5	17.1
West	20,875	18,631	19,747	-5.4	6.0

<sup>1</sup> Revised.

<sup>2</sup> States not shown when fewer than 3 plants reported or individual plant operations could be disclosed. Percent change shown only when comparable States are included in the calculation.

**Canned Milk and Dry Milk Products: Manufacturers' Shipments,  
Stocks, and Selling Prices, June, 2003-2004**

Product	Jun 2003	May 2004 <sup>1</sup>	Jun 2004	Change From	
				Jun 2003	May 2004
	<b>Manufacturers' Shipments<sup>2</sup></b>				
	<i>1,000 Pounds</i>	<i>1,000 Pounds</i>	<i>1,000 Pounds</i>	<i>Percent</i>	<i>Percent</i>
Nonfat Dry Milk, Human	137,330	123,287	127,234	-7.4	3.2
	<b>Manufacturers' Stocks End-of-Month<sup>3</sup></b>				
	<i>1,000 Pounds</i>	<i>1,000 Pounds</i>	<i>1,000 Pounds</i>	<i>Percent</i>	<i>Percent</i>
Canned Evaporated and Condensed Whole Milk	76,098	55,428	69,258	-9.0	25.0
Nonfat Dry Milk, Human	120,014	126,246	146,099	21.7	15.7
Dry Buttermilk, Total	6,844	4,772	4,044	-40.9	-15.3

<sup>1</sup> Revised.

<sup>2</sup> For dry products, shipments of bulk goods only.

<sup>3</sup> Stocks held by manufacturers at all points and in transit.



**Procedures and Reliability:** Estimates included in this report are based on data provided each month by manufacturers of these products. In 32 States, the State Departments of Agriculture assist in collection of data, which eliminates duplicate reporting and reduces respondent burden. Data are collected by mail, personal and telephone interviews following the close of each month. There were 1,126 manufacturers that made one or more products in 2003. Each month, reports are generally received from all dairy plants in States with small numbers of plants. In States with large numbers of plants, survey procedures are designed to obtain monthly reports from all large plants and from a sample of small plants. Monthly estimates are based upon returns from about 70 percent of the plants which account for 70 to 90 percent of the total production of major dairy products.

**Revision Policy:** Monthly estimates are subject to revision the month following the preliminary estimates. Annual estimates are published in the "**Dairy Products**" report published each April which includes any revisions made to current and previous year. An attempt is made to get information from all plants for preparing these estimates

## ACCESS TO REPORTS!!

---

For your convenience, there are several ways to obtain NASS reports, data products, and services:

### INTERNET ACCESS

All NASS reports are available free of charge on the worldwide Internet. For access, connect to the Internet and go to the NASS Home Page at: [www.usda.gov/nass/](http://www.usda.gov/nass/). Select "Today's Reports" or Publications and then Reports Calendar or Publications and then Search, by Title or Subject.

### E-MAIL SUBSCRIPTION

All NASS reports are available by subscription free of charge direct to your e-mail address. Starting with the NASS Home Page at [www.usda.gov/nass/](http://www.usda.gov/nass/), click on **Publications**, then click on the **Subscribe by E-mail** button which takes you to the page describing e-mail delivery of reports. Finally, click on **Go to the Subscription Page** and follow the instructions.

-----

### PRINTED REPORTS OR DATA PRODUCTS

**CALL OUR TOLL-FREE ORDER DESK: 800-999-6779 (U.S. and Canada)**  
**Other areas, please call 703-605-6220      FAX: 703-605-6900**  
**(Visa, MasterCard, check, or money order acceptable for payment.)**

-----

### ASSISTANCE

For **assistance** with general agricultural statistics or further information about NASS or its products or services, contact the **Agricultural Statistics Hotline** at **800-727-9540**, 7:30 a.m. to 4:00 p.m. ET, or e-mail: [nass@nass.usda.gov](mailto:nass@nass.usda.gov).

---

The United States Department of Agriculture (USDA) prohibits discrimination in all its programs on the basis of race, color, national origin, gender, religion, age, disability, political beliefs, sexual orientation, and marital or family status. (Not all prohibited bases apply to all programs.) Persons with disabilities who require alternative means for communication of program information (braille, large print, audiotape, etc.) should contact the USDA's TARGET Center at 202-720-2600 (voice and TDD).

To file a complaint of discrimination, write USDA, Director, Office of Civil Rights, Room 326-W, Whitten Building, 1400 Independence Avenue, SW, Washington, D.C., 20250-9410, or call 202-720-5964 (voice or TDD). USDA is an equal opportunity provider and employer.