

Released September 3, 2004, by the National Agricultural Statistics Service (NASS), Agricultural Statistics Board, U.S. Department of Agriculture. For information on *Dairy Products* call Kevin Pautler at (202) 720-9168, office hours 7:30 a.m. to 4:00 p.m. ET.

July 2004 Highlights

Total cheese output (excluding cottage cheese) was 708 million pounds, 1.5 percent below July 2003 and 1.4 percent below June 2004.

American type cheese production totaled 303 million pounds, 1.1 percent below July 2003 and 2.6 percent below June 2004.

Butter production was 91.5 million pounds in July, 14.3 percent above July 2003 but 5.6 percent below June 2004.

Frozen dessert: (comparisons with July 2003)

Ice cream, Regular (hard) --- 79.6 million gallons, down 5.8 percent.

Ice cream, Lowfat (total) --- 41.5 million gallons, up 7.0 percent.

Ice cream, Nonfat (hard) --- 1.79 million gallons, down 3.4 percent.

Sherbet (hard) --- 4.71 million gallons, down 6.9 percent.

Frozen Yogurt (total) --- 5.82 million gallons, down 4.0 percent.

Nonfat dry milk for human food: (compared with July 2003) --- 134 million pounds, up 5.1 percent.

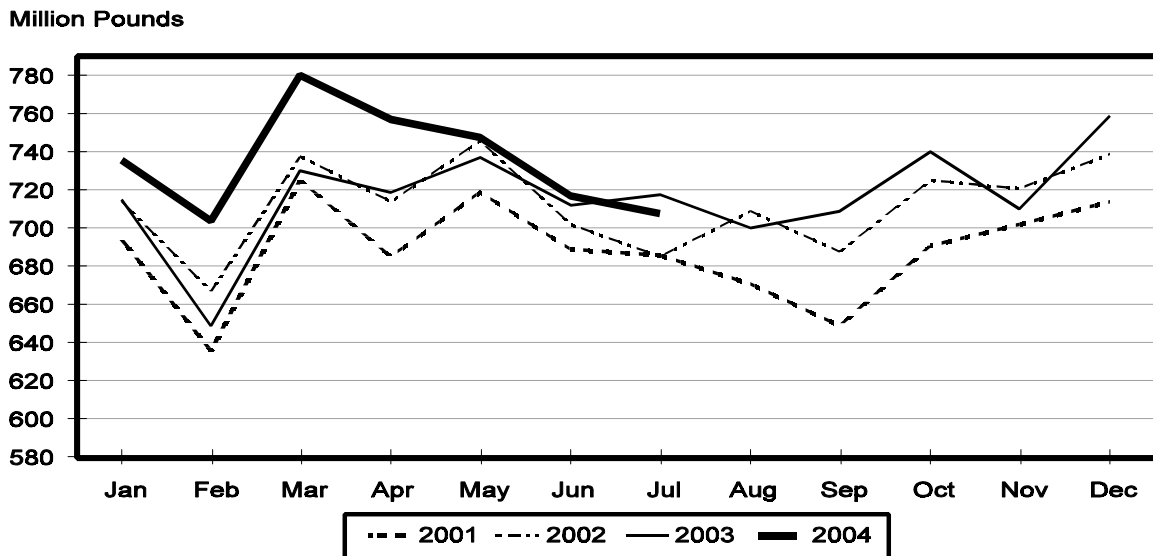
Dry whey products: (comparisons with July 2003)

Dry whey, human --- 78.0 million pounds, down 9.7 percent.

Dry whey, animal --- 6.03 million pounds, down 17.7 percent.

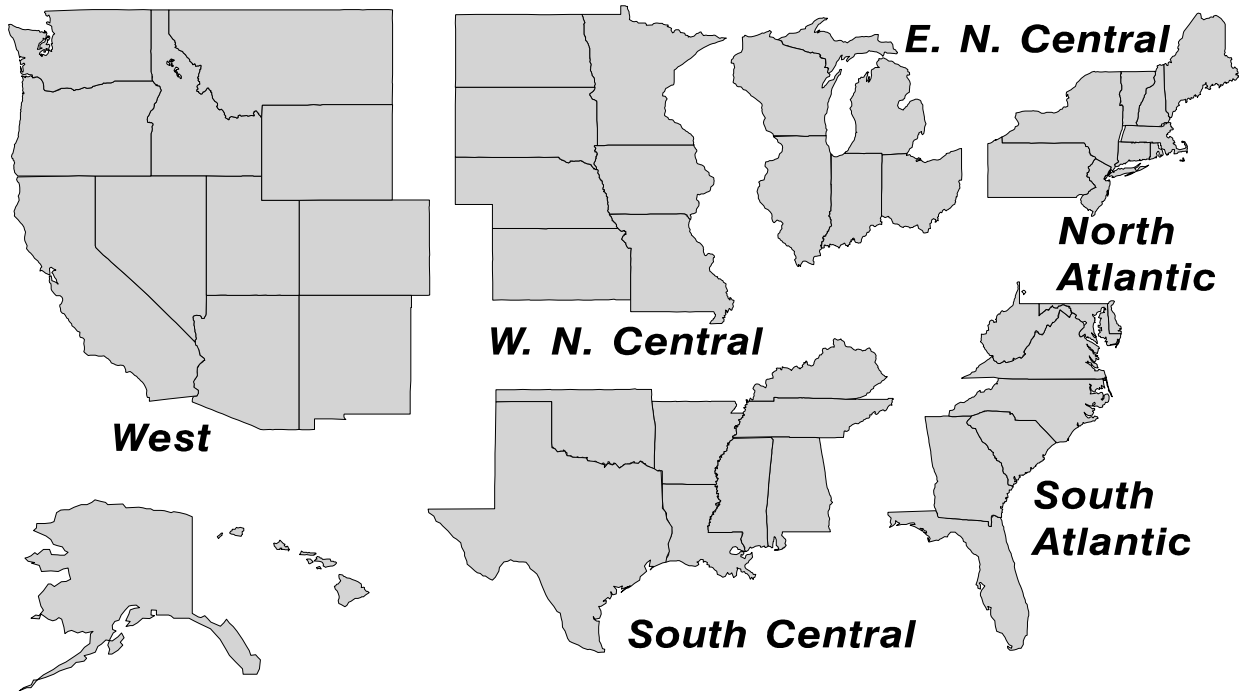
Dry whey, total --- 84.0 million pounds, down 10.4 percent.

Total Cheese Production United States



U. S. Geographic Regions Dairy Products

State totals are not published when fewer than 3 firms have reported or one firm comprises more than 60 percent of the State total. If we are not able to publish a region for confidentiality reasons, it will be combined with other regions when possible. For example, if North Atlantic can not be published, then it will be combined with South Atlantic to publish Atlantic. The West North Central and East North Central will be combined, if necessary, to form North Central. In the event that neither could be published, they may be combined with South Central to publish Central. Some tables will have only limited regions shown, therefore the regions may not add to the United States total.



Contents

Page

Dairy Products: Production by Product, United States, July, 2003-2004	1
Whey and Modified Whey Products: Production, Stocks, and Prices, United States, July, 2003-2004	2
Dairy Products: Production by Product and Month, United States, 2003-2004	3
Select Commodities by State and United States, July, 2003-2004	9
Canned Milk and Dry Milk Products: Manufacturer's Shipments, Stocks, and Selling Prices, July, 2003-2004	13
Procedures and Reliability	14

**Dairy Products: Production by Product,
United States, July, 2003-2004**

Product	Jul 2003	Jun 2004 ¹	Jul 2004	Change From	
				Jul 2003	Jun 2004
	<i>1,000 Pounds</i>	<i>1,000 Pounds</i>	<i>1,000 Pounds</i>	<i>Percent</i>	<i>Percent</i>
Butter	80,050	96,975	91,525	14.3	-5.6
Cheese					
American Types ²	306,675	311,376	303,273	-1.1	-2.6
Cheddar	229,870	234,465	218,886	-4.8	-6.6
Swiss	22,158	23,550	23,031	3.9	-2.2
Brick and Muenster	7,524	6,404	6,481	-13.9	1.2
Cream and Neufchatel	54,050	50,585	54,195	0.3	7.1
Hispanic	11,474	11,059	10,972	-4.4	-0.8
Mozzarella	236,511	234,903	227,779	-3.7	-3.0
Other Italian Types	57,312	56,766	60,274	5.2	6.2
Total Italian Types	293,823	291,669	288,053	-2.0	-1.2
All Other Types	22,554	22,643	21,586	-4.3	-4.7
Total	718,258	717,286	707,591	-1.5	-1.4
Cottage Cheese, Curd ³	40,196	38,565	36,902	-8.2	-4.3
Cottage Cheese, Cream ⁴	34,767	31,682	31,745	-8.7	0.2
Cottage Cheese, Lowfat ⁵	32,910	34,139	31,186	-5.2	-8.6
Canned Evaporated and Condensed Whole Milk	55,230	52,828	48,108	-12.9	-8.9
Dry Whole Milk	3,460	2,395	2,380	-31.2	-0.6
Nonfat Dry Milk, Human	127,915	143,830	134,436	5.1	-6.5
Dry Skim Milk, Animal	835	525	489	-41.4	-6.9
Dry Buttermilk	2,359	4,391	3,781	60.3	-13.9
Sour Cream	76,507	80,348	71,013	-7.2	-11.6
Yogurt, Plain & Flavored	190,854	228,504	205,753	7.8	-10.0
	<i>1,000 Gallons</i>	<i>1,000 Gallons</i>	<i>1,000 Gallons</i>	<i>Percent</i>	<i>Percent</i>
Frozen Products					
Ice Cream, Hard	84,507	85,760	79,629	-5.8	-7.1
Ice Cream, Lowfat, Hard	11,257	11,200	10,341	-8.1	-7.7
Ice Cream, Lowfat, Soft	27,526	32,413	31,147	13.2	-3.9
Ice Cream, Lowfat, Total	38,783	43,613	41,488	7.0	-4.9
Ice Cream, Nonfat, Hard	1,858	1,928	1,794	-3.4	-7.0
Sherbet, Hard	5,053	5,805	4,705	-6.9	-18.9
Water and Juice Ices	6,429	6,083	6,880	7.0	13.1
Frozen Yogurt, Total	6,057	6,419	5,817	-4.0	-9.4
Regular & Lowfat, Hard	1,960	1,740	1,745	-11.0	0.3
Nonfat, Hard	1,243	1,083	963	-22.5	-11.1
Other Frozen Dairy Products	837	972	810	-3.2	-16.7
Mix for Frozen Products					
Ice Cream Mix	51,714	50,480	47,181	-8.8	-6.5
Ice Cream, Lowfat, Mix	22,630	24,207	23,040	1.8	-4.8
Ice Cream, Nonfat, Mix	1,326	1,224	1,186	-10.6	-3.1
Sherbet Mix	3,660	4,017	3,528	-3.6	-12.2
Yogurt Mix	3,782	3,776	3,422	-9.5	-9.4

¹ Revised.

² Includes Cheddar, Colby, Monterey, and Jack.

³ Mostly used for processing into cream or lowfat cottage cheese.

⁴ Fat content 4 percent or more.

⁵ Fat content less than 4 percent.

**Whey and Modified Whey Products: Production, Stocks,
and Prices, United States, July, 2003-2004**

Product	Jul 2003	Jun 2004 ¹	Jul 2004	Change From	
				Jul 2003	Jun 2004
Production					
	<i>1,000 Pounds</i>	<i>1,000 Pounds</i>	<i>1,000 Pounds</i>	<i>Percent</i>	<i>Percent</i>
Condensed Whey, Solids Content ²					
Sweet-Type, Human	9,628	7,760	7,590	-21.2	-2.2
Dry Whey Products					
Dry Whey, Human	86,383	79,251	77,961	-9.7	-1.6
Dry Whey, Animal	7,326	7,628	6,032	-17.7	-20.9
Dry Whey, Total	93,709	86,879	83,993	-10.4	-3.3
Reduced Lactose and Minerals					
Human Food	4,394	2,922	3,833	-12.8	31.2
Animal Feed ³	3,327	3,838	3,653	9.8	-4.8
Lactose, Human and Animal	52,870	56,866	55,749	5.4	-2.0
Whey					
Protein Concentrate, Human ⁴	24,149	24,353	25,075	3.8	3.0
Protein Concentrate, Animal ⁴	3,335	3,558	3,541	6.2	-0.5
Manufacturers' Stocks End-of-Month ⁵					
	<i>1,000 Pounds</i>	<i>1,000 Pounds</i>	<i>1,000 Pounds</i>	<i>Percent</i>	<i>Percent</i>
Dry Whey Products					
Dry Whey, Human	42,769	36,157	36,870	-13.8	2.0
Dry Whey, Animal	2,974	5,571	5,178	74.1	-7.1
Reduced Lactose and Minerals					
Human and Animal ⁶	9,991	6,336	7,164	-28.3	13.1
Lactose, Human and Animal	38,252	62,649	62,310	62.9	-0.5
Whey Protein Concentrate, Human ⁴	26,245	19,068	21,795	-17.0	14.3
Whey Protein Concentrate, Animal ⁴	1,562	2,150	2,425	55.2	12.8
Manufacturers' Selling Price ⁷					
	<i>Cents per Pound</i>	<i>Cents per Pound</i>	<i>Cents per Pound</i>	<i>Cents Change</i>	<i>Cents Change</i>
Dry Whey, Animal	14.3	27.3	24.2	9.9	-3.1

¹ Revised.

² Final marketable product only. Does not include quantity used or shipped to another plant for further processing into dry whey or modified whey products. Does not include sweet-type, animal whey.

³ Not shown when fewer than 3 plants reported or individual plant operations could be disclosed.

⁴ Whey Protein Concentrate, 25.0 to 89.9 percent.

⁵ Stocks held by manufacturers at all points and in transit.

⁶ Reduced lactose and minerals stocks combined to avoid disclosure of individual operations.

⁷ Prices for bulk goods, f.o.b. plant. Average monthly prices reported by firms.

**Dairy Products: Production by Product and Month,
United States, 2003-2004 ¹**

Product and Month	By Month			Cumulative		
	2003	2004	Change From 2003	2003	2004	Change From 2003
	<i>1,000 Pounds</i>	<i>1,000 Pounds</i>	<i>Percent</i>	<i>1,000 Pounds</i>	<i>1,000 Pounds</i>	<i>Percent</i>
Total Cheese						
Jan	714,838	735,851	2.9	714,838	735,851	2.9
Feb	648,644	704,288	8.6	1,363,482	1,440,139	5.6
Mar	730,287	779,599	6.8	2,093,769	2,219,738	6.0
Apr	718,834	756,778	5.3	2,812,603	2,976,516	5.8
May	737,027	748,351	1.5	3,549,630	3,724,867	4.9
Jun	712,309	717,286	0.7	4,261,939	4,442,153	4.2
Jul	718,258	707,591	-1.5	4,980,197	5,149,744	3.4
Aug	700,132			5,680,329		
Sep	708,708			6,389,037		
Oct	740,016			7,129,053		
Nov	710,036			7,839,089		
Dec	758,887			8,597,976		
American Cheese						
Jan	318,428	321,380	0.9	318,428	321,380	0.9
Feb	286,295	297,241	3.8	604,723	618,621	2.3
Mar	317,833	324,194	2.0	922,556	942,815	2.2
Apr	307,087	322,411	5.0	1,229,643	1,265,226	2.9
May	319,462	331,908	3.9	1,549,105	1,597,134	3.1
Jun	305,049	311,376	2.1	1,854,154	1,908,510	2.9
Jul	306,675	303,273	-1.1	2,160,829	2,211,783	2.4
Aug	299,117			2,459,946		
Sep	292,222			2,752,168		
Oct	305,067			3,057,235		
Nov	291,085			3,348,320		
Dec	321,189			3,669,509		
Cheddar Cheese						
Jan	246,690	244,808	-0.8	246,690	244,808	-0.8
Feb	219,377	223,308	1.8	466,067	468,116	0.4
Mar	240,590	241,804	0.5	706,657	709,920	0.5
Apr	231,685	243,367	5.0	938,342	953,287	1.6
May	239,124	251,316	5.1	1,177,466	1,204,603	2.3
Jun	229,741	234,465	2.1	1,407,207	1,439,068	2.3
Jul	229,870	218,886	-4.8	1,637,077	1,657,954	1.3
Aug	223,183			1,860,260		
Sep	214,603			2,074,863		
Oct	220,878			2,295,741		
Nov	212,629			2,508,370		
Dec	240,972			2,749,342		

See footnote(s) at end of table.

--continued

**Dairy Products: Production by Product and Month,
United States, 2003-2004¹ (continued)**

Product and Month	By Month			Cumulative		
	2003	2004	Change From 2003	2003	2004	Change From 2003
	<i>1,000 Pounds</i>	<i>1,000 Pounds</i>	<i>Percent</i>	<i>1,000 Pounds</i>	<i>1,000 Pounds</i>	<i>Percent</i>
Italian Cheese						
Jan	292,100	307,046	5.1	292,100	307,046	5.1
Feb	265,492	299,501	12.8	557,592	606,547	8.8
Mar	299,783	333,416	11.2	857,375	939,963	9.6
Apr	297,684	309,418	3.9	1,155,059	1,249,381	8.2
May	302,565	302,462		1,457,624	1,551,843	6.5
Jun	293,040	291,669	-0.5	1,750,664	1,843,512	5.3
Jul	293,823	288,053	-2.0	2,044,487	2,131,565	4.3
Aug	288,787			2,333,274		
Sep	287,912			2,621,186		
Oct	297,437			2,918,623		
Nov	289,184			3,207,807		
Dec	314,242			3,522,049		
Mozzarella						
Jan	231,028	244,677	5.9	231,028	244,677	5.9
Feb	211,519	240,013	13.5	442,547	484,690	9.5
Mar	237,475	262,896	10.7	680,022	747,586	9.9
Apr	236,320	249,677	5.7	916,342	997,263	8.8
May	246,188	244,528	-0.7	1,162,530	1,241,791	6.8
Jun	236,757	234,903	-0.8	1,399,287	1,476,694	5.5
Jul	236,511	227,779	-3.7	1,635,798	1,704,473	4.2
Aug	232,518			1,868,316		
Sep	225,454			2,093,770		
Oct	232,061			2,325,831		
Nov	230,315			2,556,146		
Dec	249,953			2,806,099		
Other Italian						
Jan	61,072	62,369	2.1	61,072	62,369	2.1
Feb	53,973	59,488	10.2	115,045	121,857	5.9
Mar	62,308	70,520	13.2	177,353	192,377	8.5
Apr	61,364	59,741	-2.6	238,717	252,118	5.6
May	56,377	57,934	2.8	295,094	310,052	5.1
Jun	56,283	56,766	0.9	351,377	366,818	4.4
Jul	57,312	60,274	5.2	408,689	427,092	4.5
Aug	56,269			464,958		
Sep	62,458			527,416		
Oct	65,376			592,792		
Nov	58,869			651,661		
Dec	64,289			715,950		

See footnote(s) at end of table.

--continued

**Dairy Products: Production by Product and Month,
United States, 2003-2004 ¹ (continued)**

Product and Month	By Month			Cumulative		
	2003	2004	Change From 2003	2003	2004	Change From 2003
	<i>1,000 Pounds</i>	<i>1,000 Pounds</i>	<i>Percent</i>	<i>1,000 Pounds</i>	<i>1,000 Pounds</i>	<i>Percent</i>
Butter						
Jan	141,912	131,859	-7.1	141,912	131,859	-7.1
Feb	128,086	105,788	-17.4	269,998	237,647	-12.0
Mar	126,400	96,741	-23.5	396,398	334,388	-15.6
Apr	122,844	96,521	-21.4	519,242	430,909	-17.0
May	114,895	106,597	-7.2	634,137	537,506	-15.2
Jun	84,169	96,975	15.2	718,306	634,481	-11.7
Jul	80,050	91,525	14.3	798,356	726,006	-9.1
Aug	70,916			869,272		
Sep	73,267			942,539		
Oct	96,784			1,039,323		
Nov	88,436			1,127,759		
Dec	114,599			1,242,358		
Nonfat Dry Milk, Human						
Jan	141,299	120,490	-14.7	141,299	120,490	-14.7
Feb	137,213	115,772	-15.6	278,512	236,262	-15.2
Mar	155,430	118,018	-24.1	433,942	354,280	-18.4
Apr	159,997	134,057	-16.2	593,939	488,337	-17.8
May	163,883	151,108	-7.8	757,822	639,445	-15.6
Jun	139,992	143,830	2.7	897,814	783,275	-12.8
Jul	127,915	134,436	5.1	1,025,729	917,711	-10.5
Aug	107,060			1,132,789		
Sep	96,774			1,229,563		
Oct	106,887			1,336,450		
Nov	110,865			1,447,315		
Dec	141,726			1,589,041		
Total Dry Whey ²						
Jan	95,268	87,073	-8.6	95,268	87,073	-8.6
Feb	86,466	83,904	-3.0	181,734	170,977	-5.9
Mar	98,511	93,745	-4.8	280,245	264,722	-5.5
Apr	92,801	91,978	-0.9	373,046	356,700	-4.4
May	97,256	90,491	-7.0	470,302	447,191	-4.9
Jun	92,410	86,879	-6.0	562,712	534,070	-5.1
Jul	93,709	83,993	-10.4	656,421	618,063	-5.8
Aug	87,643			744,064		
Sep	84,812			828,876		
Oct	86,176			915,052		
Nov	82,343			997,395		
Dec	88,948			1,086,343		

See footnote(s) at end of table.

--continued

**Dairy Products: Production by Product and Month,
United States, 2003-2004¹ (continued)**

Product and Month	By Month			Cumulative		
	2003	2004	Change From 2003	2003	2004	Change From 2003
	<i>1,000 Pounds</i>	<i>1,000 Pounds</i>	<i>Percent</i>	<i>1,000 Pounds</i>	<i>1,000 Pounds</i>	<i>Percent</i>
Cream Cottage Cheese						
Jan	32,071	31,897	-0.5	32,071	31,897	-0.5
Feb	29,246	30,642	4.8	61,317	62,539	2.0
Mar	31,570	34,940	10.7	92,887	97,479	4.9
Apr	33,847	31,360	-7.3	126,734	128,839	1.7
May	32,722	30,688	-6.2	159,456	159,527	
Jun	33,694	31,682	-6.0	193,150	191,209	-1.0
Jul	34,767	31,745	-8.7	227,917	222,954	-2.2
Aug	34,175			262,092		
Sep	33,043			295,135		
Oct	32,276			327,411		
Nov	28,723			356,134		
Dec	29,042			385,176		
Lowfat Cottage Cheese						
Jan	31,263	31,839	1.8	31,263	31,839	1.8
Feb	29,543	30,591	3.5	60,806	62,430	2.7
Mar	32,003	35,649	11.4	92,809	98,079	5.7
Apr	32,910	32,172	-2.2	125,719	130,251	3.6
May	32,039	34,300	7.1	157,758	164,551	4.3
Jun	30,301	34,139	12.7	188,059	198,690	5.7
Jul	32,910	31,186	-5.2	220,969	229,876	4.0
Aug	33,182			254,151		
Sep	33,974			288,125		
Oct	33,398			321,523		
Nov	29,728			351,251		
Dec	28,782			380,033		
	<i>1,000 Gallons</i>	<i>1,000 Gallons</i>	<i>Percent</i>	<i>1,000 Gallons</i>	<i>1,000 Gallons</i>	<i>Percent</i>
Ice Cream, Hard						
Jan	69,795	59,132	-15.3	69,795	59,132	-15.3
Feb	70,821	65,823	-7.1	140,616	124,955	-11.1
Mar	75,716	78,711	4.0	216,332	203,666	-5.9
Apr	84,367	77,391	-8.3	300,699	281,057	-6.5
May	80,900	75,073	-7.2	381,599	356,130	-6.7
Jun	84,698	85,760	1.3	466,297	441,890	-5.2
Jul	84,507	79,629	-5.8	550,804	521,519	-5.3
Aug	77,382			628,186		
Sep	73,398			701,584		
Oct	69,761			771,345		
Nov	59,530			830,875		
Dec	56,091			886,966		

See footnote(s) at end of table.

--continued

**Dairy Products: Production by Product and Month,
United States, 2003-2004¹ (continued)**

Product and Month	By Month			Cumulative		
	2003	2004	Change From 2003	2003	2004	Change From 2003
	<i>1,000 Gallons</i>	<i>1,000 Gallons</i>	<i>Percent</i>	<i>1,000 Gallons</i>	<i>1,000 Gallons</i>	<i>Percent</i>
Ice Cream, Lowfat						
Jan	23,544	25,947	10.2	23,544	25,947	10.2
Feb	24,272	26,832	10.5	47,816	52,779	10.4
Mar	29,618	36,689	23.9	77,434	89,468	15.5
Apr	32,249	38,960	20.8	109,683	128,428	17.1
May	34,534	38,859	12.5	144,217	167,287	16.0
Jun	36,902	43,613	18.2	181,119	210,900	16.4
Jul	38,783	41,488	7.0	219,902	252,388	14.8
Aug	33,504			253,406		
Sep	28,364			281,770		
Oct	27,413			309,183		
Nov	21,285			330,468		
Dec	22,466			352,934		
Ice Cream, NF, Hard						
Jan	1,440	1,430	-0.7	1,440	1,430	-0.7
Feb	1,382	1,482	7.2	2,822	2,912	3.2
Mar	1,593	1,693	6.3	4,415	4,605	4.3
Apr	1,830	1,972	7.8	6,245	6,577	5.3
May	1,839	1,795	-2.4	8,084	8,372	3.6
Jun	1,865	1,928	3.4	9,949	10,300	3.5
Jul	1,858	1,794	-3.4	11,807	12,094	2.4
Aug	1,478			13,285		
Sep	1,564			14,849		
Oct	1,681			16,530		
Nov	1,344			17,874		
Dec	1,097			18,971		
Sherbet, Hard						
Jan	3,986	3,766	-5.5	3,986	3,766	-5.5
Feb	4,311	3,973	-7.8	8,297	7,739	-6.7
Mar	4,683	5,609	19.8	12,980	13,348	2.8
Apr	5,011	5,171	3.2	17,991	18,519	2.9
May	5,058	4,944	-2.3	23,049	23,463	1.8
Jun	5,582	5,805	4.0	28,631	29,268	2.2
Jul	5,053	4,705	-6.9	33,684	33,973	0.9
Aug	4,552			38,236		
Sep	4,255			42,491		
Oct	3,697			46,188		
Nov	3,169			49,357		
Dec	3,209			52,566		

See footnote(s) at end of table.

--continued

**Dairy Products: Production by Product and Month,
United States, 2003-2004 ¹ (continued)**

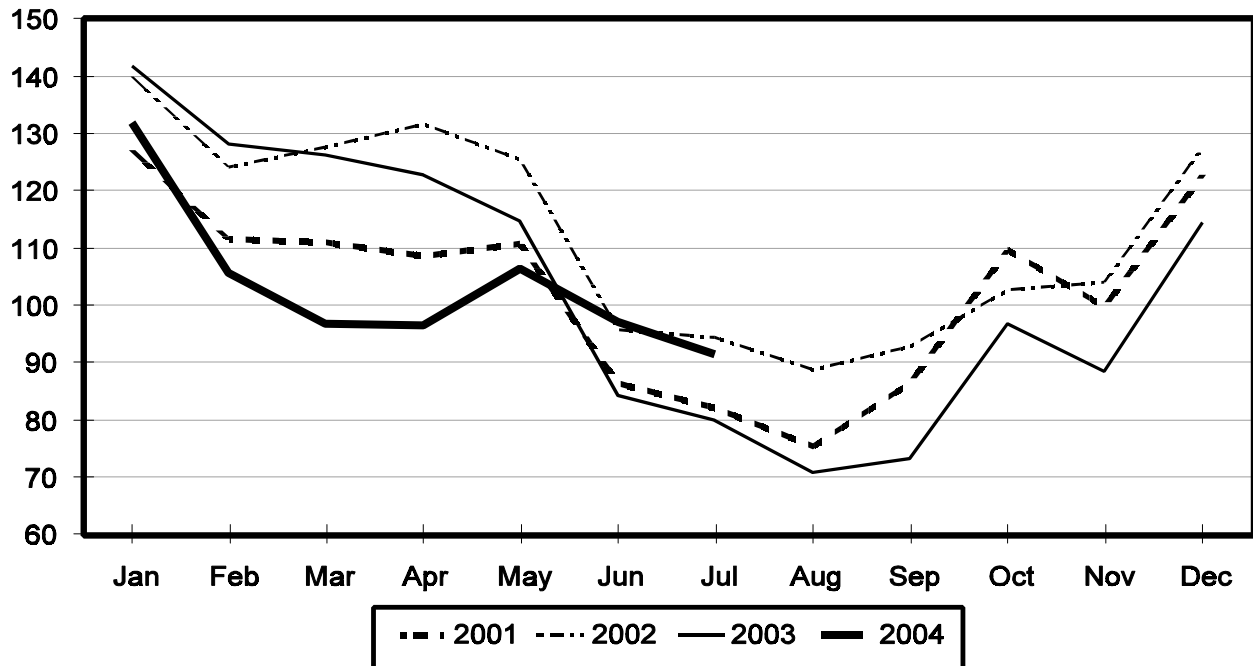
Product and Month	By Month			Cumulative		
	2003	2004	Change From 2003	2003	2004	Change From 2003
	<i>1,000 Gallons</i>	<i>1,000 Gallons</i>	<i>Percent</i>	<i>1,000 Gallons</i>	<i>1,000 Gallons</i>	<i>Percent</i>
Frozen Yogurt						
Jan	5,271	4,403	-16.5	5,271	4,403	-16.5
Feb	5,731	4,973	-13.2	11,002	9,376	-14.8
Mar	5,803	6,246	7.6	16,805	15,622	-7.0
Apr	7,025	6,016	-14.4	23,830	21,638	-9.2
May	6,558	6,282	-4.2	30,388	27,920	-8.1
Jun	6,211	6,419	3.3	36,599	34,339	-6.2
Jul	6,057	5,817	-4.0	42,656	40,156	-5.9
Aug	5,953			48,609		
Sep	5,818			54,427		
Oct	5,282			59,709		
Nov	4,399			64,108		
Dec	3,916			68,024		

¹ June 2004 data revised.

² Excludes all modified dry whey products.

Total Butter Production United States

Million Pounds



**Total Cheese, Excluding Cottage Cheese: Production by
State and United States, July 2003-2004**

State	Jul 2003	Jun ¹ 2004	Jul 2004	Change From	
				Jul 2003	Jun 2004
	<i>1,000 Pounds</i>	<i>1,000 Pounds</i>	<i>1,000 Pounds</i>	<i>Percent</i>	<i>Percent</i>
CA	158,177	161,353	162,313	2.6	0.6
IL	7,891	7,941	7,333	-7.1	-7.7
IA	12,274	12,862	12,296	0.2	-4.4
MA	64	73	61	-4.7	-16.4
MN	50,759	53,445	48,943	-3.6	-8.4
MO	8,475	7,300	7,991	-5.7	9.5
NY	54,711	52,828	54,325	-0.7	2.8
OH	14,302	14,774	14,891	4.1	0.8
PA	31,410	31,895	28,097	-10.5	-11.9
SD	13,081	12,063	12,655	-3.3	4.9
UT	6,408	5,995	5,338	-16.7	-11.0
WI	194,000	188,952	191,568	-1.3	1.4
Oth Sts ²	166,706	167,805	161,780	-3.0	-3.6
US	718,258	717,286	707,591	-1.5	-1.4
N Atlantic	102,292	98,978	97,989	-4.2	-1.0
S Atlantic	3,410	2,965	3,401	-0.3	14.7
E N Central	229,525	224,422	224,538	-2.2	0.1
W N Central	85,878	88,892	84,942	-1.1	-4.4
S Central	6,091	7,930	6,040	-0.8	-23.8
West	291,062	294,099	290,681	-0.1	-1.2

¹ Revised.

² States not shown when fewer than 3 plants reported or individual plant operations could be disclosed. Percent change shown only when comparable States are included in the calculation.

American Cheese: Production by State and United States, July 2003-2004

State	Jul 2003	Jun ¹ 2004	Jul 2004	Change From	
				Jul 2003	Jun 2004
	<i>1,000 Pounds</i>	<i>1,000 Pounds</i>	<i>1,000 Pounds</i>	<i>Percent</i>	<i>Percent</i>
CA	65,695	67,571	67,883	3.3	0.5
ID	39,854	43,242	44,538	11.8	3.0
IA	9,911	10,073	9,581	-3.3	-4.9
MN	48,938	51,300	46,612	-4.8	-9.1
NY	7,398	7,876	7,660	3.5	-2.7
OH	3,113	2,747	2,582	-17.1	-6.0
OR	8,477	8,282	8,658	2.1	4.5
SD	7,251	7,041	7,036	-3.0	-0.1
WI	70,319	73,125	69,300	-1.4	-5.2
Oth Sts ²	45,719	40,119	39,423	-13.8	-1.7
US	306,675	311,376	303,273	-1.1	-2.6
Atlantic	13,433	12,467	13,368	-0.5	7.2
E N Central	74,643	76,655	72,923	-2.3	-4.9
W N Central	66,444	68,954	63,678	-4.2	-7.7
S Central	3,669	4,671	3,750	2.2	-19.7
West	148,486	148,629	149,554	0.7	0.6

¹ Revised.

² States not shown when fewer than 3 plants reported or individual plant operations could be disclosed. Percent change shown only when comparable States are included in the calculation.

Cheddar Cheese: Production by State and United States, July 2003-2004

State	Jul 2003	Jun ¹ 2004	Jul 2004	Change From	
				Jul 2003	Jun 2004
	<i>1,000 Pounds</i>	<i>1,000 Pounds</i>	<i>1,000 Pounds</i>	<i>Percent</i>	<i>Percent</i>
CA	42,231	44,304	41,349	-2.1	-6.7
ID	19,265	21,311	20,797	8.0	-2.4
MN	44,340	46,785	42,603	-3.9	-8.9
NY	7,273	7,773	7,567	4.0	-2.7
SD	5,397	5,482	3,760	-30.3	-31.4
WI	54,309	58,300	53,100	-2.2	-8.9
Oth Sts ²	57,055	50,510	49,710	-12.9	-1.6
US	229,870	234,465	218,886	-4.8	-6.6
Atlantic	12,829	11,939	12,729	-0.8	6.6
E N Cen	56,545	60,442	55,256	-2.3	-8.6
W N Cen	56,684	59,442	52,942	-6.6	-10.9
S Cen	3,669	4,671	3,749	2.2	-19.7
West	100,143	97,971	94,210	-5.9	-3.8

¹ Revised.

² States not shown when fewer than 3 plants reported or individual plant operations could be disclosed. Percent change shown only when comparable States are included in the calculation.

Mozzarella Cheese: Production by State and United States, July 2003-2004

State	Jul 2003	Jun ¹ 2004	Jul 2004	Change From	
				Jul 2003	Jun 2004
	<i>1,000 Pounds</i>	<i>1,000 Pounds</i>	<i>1,000 Pounds</i>	<i>Percent</i>	<i>Percent</i>
CA	69,752	70,509	70,036	0.4	-0.7
NY	16,998	13,984	14,388	-15.4	2.9
PA	15,570	17,613	14,548	-6.6	-17.4
WI	67,751	63,940	65,600	-3.2	2.6
Oth Sts ²	66,440	68,857	63,207	-4.9	-8.2
US	236,511	234,903	227,779	-3.7	-3.0
Atlantic ³	41,206	39,308	36,572	-11.2	-7.0
E N Central	79,925	76,025	75,480	-5.6	-0.7
West	109,073	112,863	108,663	-0.4	-3.7

¹ Revised.

² States not shown when fewer than 3 plants reported or individual plant operations could be disclosed. Percent change shown only when comparable States are included in the calculation.

³ Region totals may not add to U.S. when compiled regions could not be disclosed.

Butter: Production by State and United States, July 2003-2004

State	Jul 2003	Jun ¹ 2004	Jul 2004	Change From	
				Jul 2003	Jun 2004
	<i>1,000 Pounds</i>	<i>1,000 Pounds</i>	<i>1,000 Pounds</i>	<i>Percent</i>	<i>Percent</i>
CA	22,696	29,976	30,632	35.0	2.2
NY	1,912	1,499	1,223	-36.0	-18.4
PA	3,539	5,527	4,410	24.6	-20.2
WI	18,533	25,531	23,100	24.6	-9.5
Oth Sts ²	33,370	34,442	32,160	-3.6	-6.6
US	80,050	96,975	91,525	14.3	-5.6
N Atlantic ³	7,819	10,443	7,727	-1.2	-26.0
E N Central	20,453	26,819	24,511	19.8	-8.6
W N Central	6,412	7,362	6,916	7.9	-6.1
West	36,214	43,022	43,685	20.6	1.5

¹ Revised.

² States not shown when fewer than 3 plants reported or individual plant operations could be disclosed. Percent change shown only when comparable States are included in the calculation.

³ Region totals may not add to U.S. when compiled regions could not be disclosed.

**Nonfat Dry Milk, Human: Production by State
and United States, July 2003-2004**

State	Jul 2003	Jun ¹ 2004	Jul 2004	Change From	
				Jul 2003	Jun 2004
	<i>1,000 Pounds</i>	<i>1,000 Pounds</i>	<i>1,000 Pounds</i>	<i>Percent</i>	<i>Percent</i>
CA	55,994	68,152	66,019	17.9	-3.1
Oth Sts ²	71,921	75,678	68,417	-4.9	-9.6
US	127,915	143,830	134,436	5.1	-6.5
Atlantic	12,980	18,298	17,031	31.2	-6.9
E N Central	3,501	5,841	4,153	18.6	-28.9
W N Central	5,528	6,820	7,383	33.6	8.3
S Central	6,045	7,821	7,204	19.2	-7.9
West	99,861	105,050	98,665	-1.2	-6.1

¹ Revised.

² States not shown when fewer than 3 plants reported or individual plant operations could be disclosed. Percent change shown only when comparable States are included in the calculation.

**Dry Whey, Human: Production by State
and United States, July 2003-2004**

State	Jul 2003	Jun ¹ 2004	Jul 2004	Change From	
				Jul 2003	Jun 2004
	<i>1,000 Pounds</i>	<i>1,000 Pounds</i>	<i>1,000 Pounds</i>	<i>Percent</i>	<i>Percent</i>
CA	9,595	9,205	10,012	4.3	8.8
MN	8,845	4,556	4,772	-46.0	4.7
NY	11,322	10,021	10,664	-5.8	6.4
PA	7,082	8,452	6,884	-2.8	-18.6
UT	2,254	2,098	2,057	-8.7	-2.0
WI	26,623	24,730	23,700	-11.0	-4.2
Oth Sts ²	20,662	20,189	19,872	-3.8	-1.6
US	86,383	79,251	77,961	-9.7	-1.6
Atlantic	18,404	18,473	17,548	-4.7	-5.0
Central	44,517	38,774	37,251	-16.3	-3.9
West	23,462	22,004	23,162	-1.3	5.3

¹ Revised.

² States not shown when fewer than 3 plants reported or individual plant operations could be disclosed. Percent change shown only when comparable States are included in the calculation.

Ice Cream, Hard: Production by State and United States, July 2003-2004

State	Jul 2003	Jun ¹ 2004	Jul 2004	Change From	
				Jul 2003	Jun 2004
	<i>1,000 Gallons</i>	<i>1,000 Gallons</i>	<i>1,000 Gallons</i>	<i>Percent</i>	<i>Percent</i>
CA	11,491	12,041	10,024	-12.8	-16.8
FL	2,249	2,050	2,200	-2.2	7.3
IL	3,484	3,876	3,309	-5.0	-14.6
IN	7,689	8,527	7,983	3.8	-6.4
MD	1,654	1,672	1,653	-0.1	-1.1
MA	7,168	4,905	4,149	-42.1	-15.4
MI	1,368	1,423	1,380	0.9	-3.0
MN	3,539	4,457	3,558	0.5	-20.2
MO	1,694	1,942	1,801	6.3	-7.3
NY	3,122	3,100	3,176	1.7	2.5
NC	1,731	1,742	1,422	-17.9	-18.4
OH	2,952	2,189	2,287	-22.5	4.5
OR	1,488	1,395	1,508	1.3	8.1
PA	4,923	4,926	4,668	-5.2	-5.2
TN	1,745	1,472	1,330	-23.8	-9.6
TX	4,900	4,549	4,257	-13.1	-6.4
UT	1,192	2,443	2,208	85.2	-9.6
Oth Sts ²	22,118	23,051	22,716	2.7	-1.5
US	84,507	85,760	79,629	-5.8	-7.1
N Atlantic	18,084	16,265	15,248	-15.7	-6.3
S Atlantic	6,884	6,628	6,640	-3.5	0.2
E N Central	16,451	16,938	15,948	-3.1	-5.8
W N Central	12,224	15,474	13,231	8.2	-14.5
S Central	11,301	10,701	10,083	-10.8	-5.8
West	19,563	19,754	18,479	-5.5	-6.5

¹ Revised.

² States not shown when fewer than 3 plants reported or individual plant operations could be disclosed. Percent change shown only when comparable States are included in the calculation.

**Canned Milk and Dry Milk Products: Manufacturers' Shipments,
Stocks, and Selling Prices, July, 2003-2004**

Product	Jul 2003	Jun 2004 ¹	Jul 2004	Change From	
				Jul 2003	Jun 2004
	Manufacturers' Shipments ²				
	<i>1,000 Pounds</i>	<i>1,000 Pounds</i>	<i>1,000 Pounds</i>	<i>Percent</i>	<i>Percent</i>
Nonfat Dry Milk, Human	150,487	127,112	98,561	-34.5	-22.5
	Manufacturers' Stocks End-of-Month ³				
	<i>1,000 Pounds</i>	<i>1,000 Pounds</i>	<i>1,000 Pounds</i>	<i>Percent</i>	<i>Percent</i>
Canned Evaporated and Condensed Whole Milk	86,492	68,175	82,011	-5.2	20.3
Nonfat Dry Milk, Human	85,755	145,906	147,702	72.2	1.2
Dry Buttermilk, Total	2,377	4,558	5,382	126.4	18.1

¹ Revised.

² For dry products, shipments of bulk goods only.

³ Stocks held by manufacturers at all points and in transit.

Procedures and Reliability: Estimates included in this report are based on data provided each month by manufacturers of these products. In 32 States, the State Departments of Agriculture assist in collection of data, which eliminates duplicate reporting and reduces respondent burden. Data are collected by mail, personal and telephone interviews following the close of each month. There were 1,126 manufacturers that made one or more products in 2003. Each month, reports are generally received from all dairy plants in States with small numbers of plants. In States with large numbers of plants, survey procedures are designed to obtain monthly reports from all large plants and from a sample of small plants. Monthly estimates are based upon returns from about 70 percent of the plants which account for 70 to 90 percent of the total production of major dairy products.

Revision Policy: Monthly estimates are subject to revision the month following the preliminary estimates. Annual estimates are published in the "**Dairy Products**" report published each April which includes any revisions made to current and previous year. An attempt is made to get information from all plants for preparing these estimates

ACCESS TO REPORTS!!

For your convenience, there are several ways to obtain NASS reports, data products, and services:

INTERNET ACCESS

All NASS reports are available free of charge on the worldwide Internet. For access, connect to the Internet and go to the NASS Home Page at: www.usda.gov/nass/. Select "Today's Reports" or Publications and then Reports Calendar or Publications and then Search, by Title or Subject.

E-MAIL SUBSCRIPTION

All NASS reports are available by subscription free of charge direct to your e-mail address. Starting with the NASS Home Page at www.usda.gov/nass/, click on **Publications**, then click on the **Subscribe by E-mail** button which takes you to the page describing e-mail delivery of reports. Finally, click on **Go to the Subscription Page** and follow the instructions.

PRINTED REPORTS OR DATA PRODUCTS

CALL OUR TOLL-FREE ORDER DESK: 800-999-6779 (U.S. and Canada)
Other areas, please call 703-605-6220 FAX: 703-605-6900
(Visa, MasterCard, check, or money order acceptable for payment.)

ASSISTANCE

For **assistance** with general agricultural statistics or further information about NASS or its products or services, contact the **Agricultural Statistics Hotline** at **800-727-9540**, 7:30 a.m. to 4:00 p.m. ET, or e-mail: nass@nass.usda.gov.

The United States Department of Agriculture (USDA) prohibits discrimination in all its programs on the basis of race, color, national origin, gender, religion, age, disability, political beliefs, sexual orientation, and marital or family status. (Not all prohibited bases apply to all programs.) Persons with disabilities who require alternative means for communication of program information (braille, large print, audiotape, etc.) should contact the USDA's TARGET Center at 202-720-2600 (voice and TDD).

To file a complaint of discrimination, write USDA, Director, Office of Civil Rights, Room 326-W, Whitten Building, 1400 Independence Avenue, SW, Washington, D.C., 20250-9410, or call 202-720-5964 (voice or TDD). USDA is an equal opportunity provider and employer.