

Released October 4, 2004, by the National Agricultural Statistics Service (NASS), Agricultural Statistics Board, U.S. Department of Agriculture. For information on *Dairy Products* call Kevin Pautler at (202) 720-9168, office hours 7:30 a.m. to 4:00 p.m. ET.

August 2004 Highlights

Total cheese output (excluding cottage cheese) was 712 million pounds, 1.7 percent above August 2003 and 0.6 percent above July 2004.

American type cheese production totaled 297 million pounds, 0.8 percent below August 2003 and 2.0 percent below July 2004.

Butter production was 88.9 million pounds in August, 25.4 percent above August 2003 but 2.5 percent below July 2004.

Frozen dessert: (comparisons with August 2003)

Ice cream, Regular (hard) --- 73.7 million gallons, down 4.7 percent.

Ice cream, Lowfat (total) --- 38.7 million gallons, up 15.6 percent.

Ice cream, Nonfat (hard) --- 1.65 million gallons, up 11.3 percent.

Sherbet (hard) --- 4.62 million gallons, up 1.4 percent.

Frozen Yogurt (total) --- 6.03 million gallons, up 1.3 percent.

Nonfat dry milk for human food: (compared with August 2003) --- 114 million pounds, up 6.8 percent.

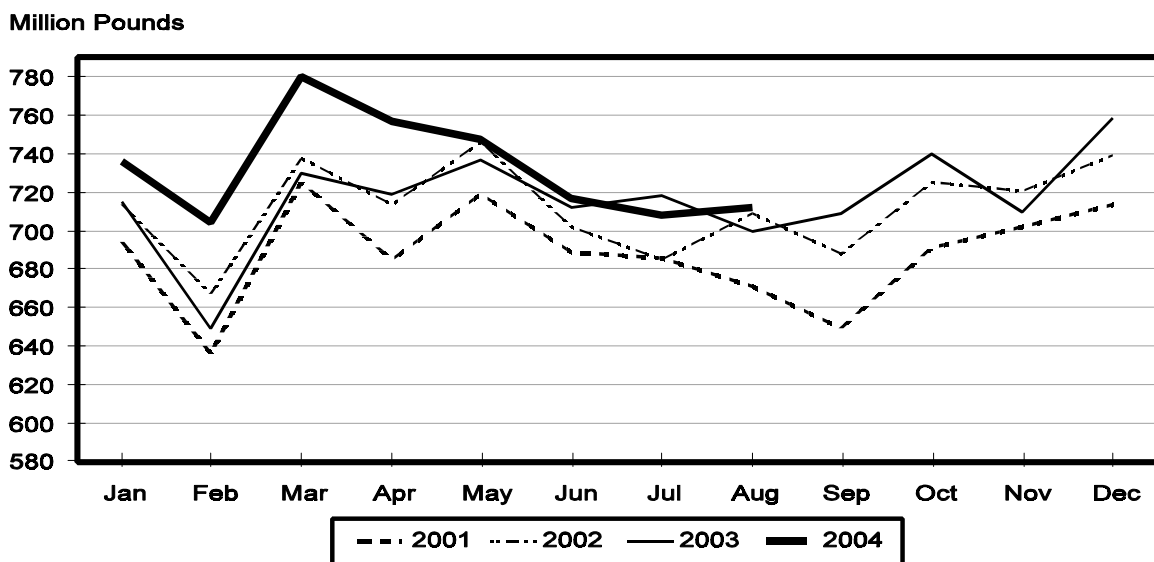
Dry whey products: (comparisons with August 2003)

Dry whey, human --- 78.9 million pounds, down 3.8 percent.

Dry whey, animal --- 6.59 million pounds, up 17.7 percent.

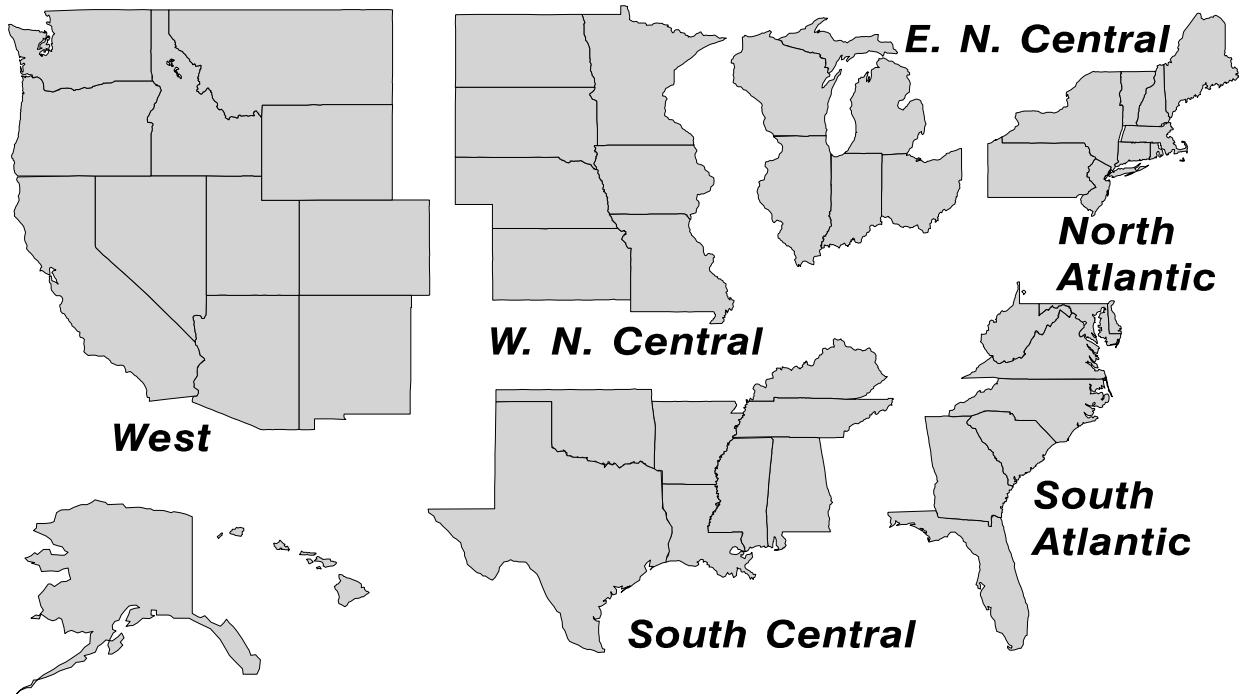
Dry whey, total --- 85.5 million pounds, down 2.4 percent.

Total Cheese Production United States



U. S. Geographic Regions Dairy Products

State totals are not published when fewer than 3 firms have reported or one firm comprises more than 60 percent of the State total. If we are not able to publish a region for confidentiality reasons, it will be combined with other regions when possible. For example, if North Atlantic can not be published, then it will be combined with South Atlantic to publish Atlantic. The West North Central and East North Central will be combined, if necessary, to form North Central. In the event that neither could be published, they may be combined with South Central to publish Central. Some tables will have only limited regions shown, therefore the regions may not add to the United States total.



Contents

Page

Dairy Products: Production by Product, United States, August, 2003-2004	1
Whey and Modified Whey Products: Production, Stocks, and Prices, United States, August, 2003-2004	2
Dairy Products: Production by Product and Month, United States, 2003-2004	3
Select Commodities by State and United States, August, 2003-2004	9
Canned Milk and Dry Milk Products: Manufacturer's Shipments, Stocks, and Selling Prices, August, 2003-2004	13
Procedures and Reliability	14

**Dairy Products: Production by Product,
United States, August, 2003-2004**

Product	Aug 2003	Jul 2004 ¹	Aug 2004	Change From	
				Aug 2003	Jul 2004
	<i>1,000 Pounds</i>	<i>1,000 Pounds</i>	<i>1,000 Pounds</i>	<i>Percent</i>	<i>Percent</i>
Butter	70,916	91,229	88,908	25.4	-2.5
Cheese					
American Types ²	299,117	302,784	296,591	-0.8	-2.0
Cheddar	223,183	218,284	212,444	-4.8	-2.7
Swiss	20,865	22,913	22,657	8.6	-1.1
Brick and Muenster	6,835	6,583	6,783	-0.8	3.0
Cream and Neufchatel	54,766	54,195	58,000	5.9	7.0
Hispanic	10,714	10,986	10,737	0.2	-2.3
Mozzarella	232,518	227,758	231,904	-0.3	1.8
Other Italian Types	56,269	60,775	63,259	12.4	4.1
Total Italian Types	288,787	288,533	295,163	2.2	2.3
All Other Types	19,048	21,890	22,219	16.6	1.5
Total	700,132	707,884	712,150	1.7	0.6
Cottage Cheese, Curd ³	40,108	36,898	38,780	-3.3	5.1
Cottage Cheese, Cream ⁴	34,175	32,708	33,004	-3.4	0.9
Cottage Cheese, Lowfat ⁵	33,182	32,558	32,719	-1.4	0.5
Canned Evaporated and Condensed Whole Milk	44,693	48,293	37,778	-15.5	-21.8
Dry Whole Milk	2,618	2,380	3,111	18.8	30.7
Nonfat Dry Milk, Human	107,060	134,036	114,339	6.8	-14.7
Dry Skim Milk, Animal	455	574	512	12.5	-10.8
Dry Buttermilk	2,440	3,781	3,275	34.2	-13.4
Sour Cream	80,096	75,003	80,327	0.3	7.1
Yogurt, Plain & Flavored	214,098	207,168	227,310	6.2	9.7
	<i>1,000 Gallons</i>	<i>1,000 Gallons</i>	<i>1,000 Gallons</i>	<i>Percent</i>	<i>Percent</i>
Frozen Products					
Ice Cream, Hard	77,382	78,759	73,739	-4.7	-6.4
Ice Cream, Lowfat, Hard	8,677	10,340	9,647	11.2	-6.7
Ice Cream, Lowfat, Soft	24,827	31,777	29,086	17.2	-8.5
Ice Cream, Lowfat, Total	33,504	42,117	38,733	15.6	-8.0
Ice Cream, Nonfat, Hard	1,478	1,792	1,645	11.3	-8.2
Sherbet, Hard	4,552	4,693	4,618	1.4	-1.6
Water and Juice Ices	5,103	6,705	5,680	11.3	-15.3
Frozen Yogurt, Total	5,953	5,811	6,033	1.3	3.8
Regular & Lowfat, Hard	1,852	1,760	1,788	-3.5	1.6
Nonfat, Hard	1,168	978	1,005	-14.0	2.8
Other Frozen Dairy Products	707	763	739	4.5	-3.1
Mix for Frozen Products					
Ice Cream Mix	45,812	47,119	41,840	-8.7	-11.2
Ice Cream, Lowfat, Mix	20,539	23,395	21,510	4.7	-8.1
Ice Cream, Nonfat, Mix	912	1,193	1,056	15.8	-11.5
Sherbet Mix	3,180	3,457	3,308	4.0	-4.3
Yogurt Mix	3,652	3,418	3,549	-2.8	3.8

¹ Revised.

² Includes Cheddar, Colby, Monterey, and Jack.

³ Mostly used for processing into cream or lowfat cottage cheese.

⁴ Fat content 4 percent or more.

⁵ Fat content less than 4 percent.

**Whey and Modified Whey Products: Production, Stocks,
and Prices, United States, August, 2003-2004**

Product	Aug 2003	Jul 2004 ¹	Aug 2004	Change From	
				Aug 2003	Jul 2004
Production					
	<i>1,000 Pounds</i>	<i>1,000 Pounds</i>	<i>1,000 Pounds</i>	<i>Percent</i>	<i>Percent</i>
Condensed Whey, Solids Content ²					
Sweet-Type, Human	9,204	7,646	7,007	-23.9	-8.4
Dry Whey Products					
Dry Whey, Human	82,043	77,839	78,938	-3.8	1.4
Dry Whey, Animal	5,600	6,012	6,590	17.7	9.6
Dry Whey, Total	87,643	83,851	85,528	-2.4	2.0
Reduced Lactose and Minerals					
Human Food	3,902	3,833	3,424	-12.3	-10.7
Animal Feed ³	3,116	3,653	3,744	20.2	2.5
Lactose, Human and Animal	47,414	55,816	54,500	14.9	-2.4
Whey					
Protein Concentrate, Human ⁴	23,937	25,026	23,938		-4.3
Protein Concentrate, Animal ⁴	3,535	3,591	4,064	15.0	13.2
Manufacturers' Stocks End-of-Month ⁵					
	<i>1,000 Pounds</i>	<i>1,000 Pounds</i>	<i>1,000 Pounds</i>	<i>Percent</i>	<i>Percent</i>
Dry Whey Products					
Dry Whey, Human	40,513	36,870	37,443	-7.6	1.6
Dry Whey, Animal	2,929	5,178	5,232	78.6	1.0
Reduced Lactose and Minerals					
Human and Animal ⁶	10,037	7,164	6,749	-32.8	-5.8
Lactose, Human and Animal	37,349	64,335	66,950	79.3	4.1
Whey Protein Concentrate, Human ⁴	25,489	22,070	22,204	-12.9	0.6
Whey Protein Concentrate, Animal ⁴	1,550	2,425	2,229	43.8	-8.1
Manufacturers' Selling Price ⁷					
	<i>Cents per Pound</i>	<i>Cents per Pound</i>	<i>Cents per Pound</i>	<i>Cents Change</i>	<i>Cents Change</i>
Dry Whey, Animal	15.7	24.2	20.6	4.9	-3.6

¹ Revised.

² Final marketable product only. Does not include quantity used or shipped to another plant for further processing into dry whey or modified whey products. Does not include sweet-type, animal whey.

³ Not shown when fewer than 3 plants reported or individual plant operations could be disclosed.

⁴ Whey Protein Concentrate, 25.0 to 89.9 percent.

⁵ Stocks held by manufacturers at all points and in transit.

⁶ Reduced lactose and minerals stocks combined to avoid disclosure of individual operations.

⁷ Prices for bulk goods, f.o.b. plant. Average monthly prices reported by firms.

**Dairy Products: Production by Product and Month,
United States, 2003-2004 ¹**

Product and Month	By Month			Cumulative		
	2003	2004	Change From 2003	2003	2004	Change From 2003
	<i>1,000 Pounds</i>	<i>1,000 Pounds</i>	<i>Percent</i>	<i>1,000 Pounds</i>	<i>1,000 Pounds</i>	<i>Percent</i>
Total Cheese						
Jan	714,838	735,851	2.9	714,838	735,851	2.9
Feb	648,644	704,288	8.6	1,363,482	1,440,139	5.6
Mar	730,287	779,599	6.8	2,093,769	2,219,738	6.0
Apr	718,834	756,778	5.3	2,812,603	2,976,516	5.8
May	737,027	748,351	1.5	3,549,630	3,724,867	4.9
Jun	712,309	717,286	0.7	4,261,939	4,442,153	4.2
Jul	718,258	707,884	-1.4	4,980,197	5,150,037	3.4
Aug	700,132	712,150	1.7	5,680,329	5,862,187	3.2
Sep	708,708			6,389,037		
Oct	740,016			7,129,053		
Nov	710,036			7,839,089		
Dec	758,887			8,597,976		
American Cheese						
Jan	318,428	321,380	0.9	318,428	321,380	0.9
Feb	286,295	297,241	3.8	604,723	618,621	2.3
Mar	317,833	324,194	2.0	922,556	942,815	2.2
Apr	307,087	322,411	5.0	1,229,643	1,265,226	2.9
May	319,462	331,908	3.9	1,549,105	1,597,134	3.1
Jun	305,049	311,376	2.1	1,854,154	1,908,510	2.9
Jul	306,675	302,784	-1.3	2,160,829	2,211,294	2.3
Aug	299,117	296,591	-0.8	2,459,946	2,507,885	1.9
Sep	292,222			2,752,168		
Oct	305,067			3,057,235		
Nov	291,085			3,348,320		
Dec	321,189			3,669,509		
Cheddar Cheese						
Jan	246,690	244,808	-0.8	246,690	244,808	-0.8
Feb	219,377	223,308	1.8	466,067	468,116	0.4
Mar	240,590	241,804	0.5	706,657	709,920	0.5
Apr	231,685	243,367	5.0	938,342	953,287	1.6
May	239,124	251,316	5.1	1,177,466	1,204,603	2.3
Jun	229,741	234,465	2.1	1,407,207	1,439,068	2.3
Jul	229,870	218,284	-5.0	1,637,077	1,657,352	1.2
Aug	223,183	212,444	-4.8	1,860,260	1,869,796	0.5
Sep	214,603			2,074,863		
Oct	220,878			2,295,741		
Nov	212,629			2,508,370		
Dec	240,972			2,749,342		

See footnote(s) at end of table.

--continued

**Dairy Products: Production by Product and Month,
United States, 2003-2004¹ (continued)**

Product and Month	By Month			Cumulative		
	2003	2004	Change From 2003	2003	2004	Change From 2003
	<i>1,000 Pounds</i>	<i>1,000 Pounds</i>	<i>Percent</i>	<i>1,000 Pounds</i>	<i>1,000 Pounds</i>	<i>Percent</i>
Italian Cheese						
Jan	292,100	307,046	5.1	292,100	307,046	5.1
Feb	265,492	299,501	12.8	557,592	606,547	8.8
Mar	299,783	333,416	11.2	857,375	939,963	9.6
Apr	297,684	309,418	3.9	1,155,059	1,249,381	8.2
May	302,565	302,462		1,457,624	1,551,843	6.5
Jun	293,040	291,669	-0.5	1,750,664	1,843,512	5.3
Jul	293,823	288,533	-1.8	2,044,487	2,132,045	4.3
Aug	288,787	295,163	2.2	2,333,274	2,427,208	4.0
Sep	287,912			2,621,186		
Oct	297,437			2,918,623		
Nov	289,184			3,207,807		
Dec	314,242			3,522,049		
Mozzarella						
Jan	231,028	244,677	5.9	231,028	244,677	5.9
Feb	211,519	240,013	13.5	442,547	484,690	9.5
Mar	237,475	262,896	10.7	680,022	747,586	9.9
Apr	236,320	249,677	5.7	916,342	997,263	8.8
May	246,188	244,528	-0.7	1,162,530	1,241,791	6.8
Jun	236,757	234,903	-0.8	1,399,287	1,476,694	5.5
Jul	236,511	227,758	-3.7	1,635,798	1,704,452	4.2
Aug	232,518	231,904	-0.3	1,868,316	1,936,356	3.6
Sep	225,454			2,093,770		
Oct	232,061			2,325,831		
Nov	230,315			2,556,146		
Dec	249,953			2,806,099		
Other Italian						
Jan	61,072	62,369	2.1	61,072	62,369	2.1
Feb	53,973	59,488	10.2	115,045	121,857	5.9
Mar	62,308	70,520	13.2	177,353	192,377	8.5
Apr	61,364	59,741	-2.6	238,717	252,118	5.6
May	56,377	57,934	2.8	295,094	310,052	5.1
Jun	56,283	56,766	0.9	351,377	366,818	4.4
Jul	57,312	60,775	6.0	408,689	427,593	4.6
Aug	56,269	63,259	12.4	464,958	490,852	5.6
Sep	62,458			527,416		
Oct	65,376			592,792		
Nov	58,869			651,661		
Dec	64,289			715,950		

See footnote(s) at end of table.

--continued

**Dairy Products: Production by Product and Month,
United States, 2003-2004¹ (continued)**

Product and Month	By Month			Cumulative		
	2003	2004	Change From 2003	2003	2004	Change From 2003
	<i>1,000 Pounds</i>	<i>1,000 Pounds</i>	<i>Percent</i>	<i>1,000 Pounds</i>	<i>1,000 Pounds</i>	<i>Percent</i>
Butter						
Jan	141,912	131,859	-7.1	141,912	131,859	-7.1
Feb	128,086	105,788	-17.4	269,998	237,647	-12.0
Mar	126,400	96,741	-23.5	396,398	334,388	-15.6
Apr	122,844	96,521	-21.4	519,242	430,909	-17.0
May	114,895	106,597	-7.2	634,137	537,506	-15.2
Jun	84,169	96,975	15.2	718,306	634,481	-11.7
Jul	80,050	91,229	14.0	798,356	725,710	-9.1
Aug	70,916	88,908	25.4	869,272	814,618	-6.3
Sep	73,267			942,539		
Oct	96,784			1,039,323		
Nov	88,436			1,127,759		
Dec	114,599			1,242,358		
Nonfat Dry Milk, Human						
Jan	141,299	120,490	-14.7	141,299	120,490	-14.7
Feb	137,213	115,772	-15.6	278,512	236,262	-15.2
Mar	155,430	118,018	-24.1	433,942	354,280	-18.4
Apr	159,997	134,057	-16.2	593,939	488,337	-17.8
May	163,883	151,108	-7.8	757,822	639,445	-15.6
Jun	139,992	143,830	2.7	897,814	783,275	-12.8
Jul	127,915	134,036	4.8	1,025,729	917,311	-10.6
Aug	107,060	114,339	6.8	1,132,789	1,031,650	-8.9
Sep	96,774			1,229,563		
Oct	106,887			1,336,450		
Nov	110,865			1,447,315		
Dec	141,726			1,589,041		
Total Dry Whey ²						
Jan	95,268	87,073	-8.6	95,268	87,073	-8.6
Feb	86,466	83,904	-3.0	181,734	170,977	-5.9
Mar	98,511	93,745	-4.8	280,245	264,722	-5.5
Apr	92,801	91,978	-0.9	373,046	356,700	-4.4
May	97,256	90,491	-7.0	470,302	447,191	-4.9
Jun	92,410	86,879	-6.0	562,712	534,070	-5.1
Jul	93,709	83,851	-10.5	656,421	617,921	-5.9
Aug	87,643	85,528	-2.4	744,064	703,449	-5.5
Sep	84,812			828,876		
Oct	86,176			915,052		
Nov	82,343			997,395		
Dec	88,948			1,086,343		

See footnote(s) at end of table.

--continued

**Dairy Products: Production by Product and Month,
United States, 2003-2004¹ (continued)**

Product and Month	By Month			Cumulative		
	2003	2004	Change From 2003	2003	2004	Change From 2003
	<i>1,000 Pounds</i>	<i>1,000 Pounds</i>	<i>Percent</i>	<i>1,000 Pounds</i>	<i>1,000 Pounds</i>	<i>Percent</i>
Cream Cottage Cheese						
Jan	32,071	31,897	-0.5	32,071	31,897	-0.5
Feb	29,246	30,642	4.8	61,317	62,539	2.0
Mar	31,570	34,940	10.7	92,887	97,479	4.9
Apr	33,847	31,360	-7.3	126,734	128,839	1.7
May	32,722	30,688	-6.2	159,456	159,527	
Jun	33,694	31,682	-6.0	193,150	191,209	-1.0
Jul	34,767	32,708	-5.9	227,917	223,917	-1.8
Aug	34,175	33,004	-3.4	262,092	256,921	-2.0
Sep	33,043			295,135		
Oct	32,276			327,411		
Nov	28,723			356,134		
Dec	29,042			385,176		
Lowfat Cottage Cheese						
Jan	31,263	31,839	1.8	31,263	31,839	1.8
Feb	29,543	30,591	3.5	60,806	62,430	2.7
Mar	32,003	35,649	11.4	92,809	98,079	5.7
Apr	32,910	32,172	-2.2	125,719	130,251	3.6
May	32,039	34,300	7.1	157,758	164,551	4.3
Jun	30,301	34,139	12.7	188,059	198,690	5.7
Jul	32,910	32,558	-1.1	220,969	231,248	4.7
Aug	33,182	32,719	-1.4	254,151	263,967	3.9
Sep	33,974			288,125		
Oct	33,398			321,523		
Nov	29,728			351,251		
Dec	28,782			380,033		
	<i>1,000 Gallons</i>	<i>1,000 Gallons</i>	<i>Percent</i>	<i>1,000 Gallons</i>	<i>1,000 Gallons</i>	<i>Percent</i>
Ice Cream, Hard						
Jan	69,795	59,132	-15.3	69,795	59,132	-15.3
Feb	70,821	65,823	-7.1	140,616	124,955	-11.1
Mar	75,716	78,711	4.0	216,332	203,666	-5.9
Apr	84,367	77,391	-8.3	300,699	281,057	-6.5
May	80,900	75,073	-7.2	381,599	356,130	-6.7
Jun	84,698	85,760	1.3	466,297	441,890	-5.2
Jul	84,507	78,759	-6.8	550,804	520,649	-5.5
Aug	77,382	73,739	-4.7	628,186	594,388	-5.4
Sep	73,398			701,584		
Oct	69,761			771,345		
Nov	59,530			830,875		
Dec	56,091			886,966		

See footnote(s) at end of table.

--continued

**Dairy Products: Production by Product and Month,
United States, 2003-2004¹ (continued)**

Product and Month	By Month			Cumulative		
	2003	2004	Change From 2003	2003	2004	Change From 2003
	<i>1,000 Gallons</i>	<i>1,000 Gallons</i>	<i>Percent</i>	<i>1,000 Gallons</i>	<i>1,000 Gallons</i>	<i>Percent</i>
Ice Cream, Lowfat						
Jan	23,544	25,947	10.2	23,544	25,947	10.2
Feb	24,272	26,832	10.5	47,816	52,779	10.4
Mar	29,618	36,689	23.9	77,434	89,468	15.5
Apr	32,249	38,960	20.8	109,683	128,428	17.1
May	34,534	38,859	12.5	144,217	167,287	16.0
Jun	36,902	43,613	18.2	181,119	210,900	16.4
Jul	38,783	42,117	8.6	219,902	253,017	15.1
Aug	33,504	38,733	15.6	253,406	291,750	15.1
Sep	28,364			281,770		
Oct	27,413			309,183		
Nov	21,285			330,468		
Dec	22,466			352,934		
Ice Cream, NF, Hard						
Jan	1,440	1,430	-0.7	1,440	1,430	-0.7
Feb	1,382	1,482	7.2	2,822	2,912	3.2
Mar	1,593	1,693	6.3	4,415	4,605	4.3
Apr	1,830	1,972	7.8	6,245	6,577	5.3
May	1,839	1,795	-2.4	8,084	8,372	3.6
Jun	1,865	1,928	3.4	9,949	10,300	3.5
Jul	1,858	1,792	-3.6	11,807	12,092	2.4
Aug	1,478	1,645	11.3	13,285	13,737	3.4
Sep	1,564			14,849		
Oct	1,681			16,530		
Nov	1,344			17,874		
Dec	1,097			18,971		
Sherbet, Hard						
Jan	3,986	3,766	-5.5	3,986	3,766	-5.5
Feb	4,311	3,973	-7.8	8,297	7,739	-6.7
Mar	4,683	5,609	19.8	12,980	13,348	2.8
Apr	5,011	5,171	3.2	17,991	18,519	2.9
May	5,058	4,944	-2.3	23,049	23,463	1.8
Jun	5,582	5,805	4.0	28,631	29,268	2.2
Jul	5,053	4,693	-7.1	33,684	33,961	0.8
Aug	4,552	4,618	1.4	38,236	38,579	0.9
Sep	4,255			42,491		
Oct	3,697			46,188		
Nov	3,169			49,357		
Dec	3,209			52,566		

See footnote(s) at end of table.

--continued

**Dairy Products: Production by Product and Month,
United States, 2003-2004¹ (continued)**

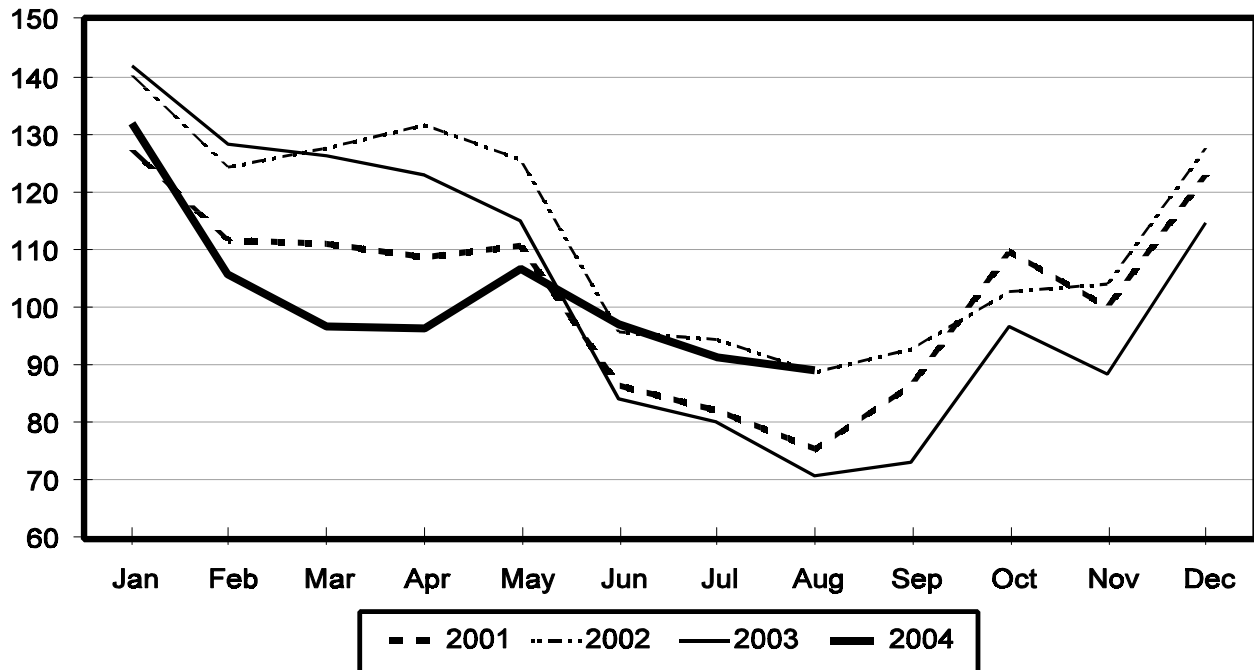
Product and Month	By Month			Cumulative		
	2003	2004	Change From 2003	2003	2004	Change From 2003
	<i>1,000 Gallons</i>	<i>1,000 Gallons</i>	<i>Percent</i>	<i>1,000 Gallons</i>	<i>1,000 Gallons</i>	<i>Percent</i>
Frozen Yogurt						
Jan	5,271	4,403	-16.5	5,271	4,403	-16.5
Feb	5,731	4,973	-13.2	11,002	9,376	-14.8
Mar	5,803	6,246	7.6	16,805	15,622	-7.0
Apr	7,025	6,016	-14.4	23,830	21,638	-9.2
May	6,558	6,282	-4.2	30,388	27,920	-8.1
Jun	6,211	6,419	3.3	36,599	34,339	-6.2
Jul	6,057	5,811	-4.1	42,656	40,150	-5.9
Aug	5,953	6,033	1.3	48,609	46,183	-5.0
Sep	5,818			54,427		
Oct	5,282			59,709		
Nov	4,399			64,108		
Dec	3,916			68,024		

¹ July 2004 data revised.

² Excludes all modified dry whey products.

Total Butter Production United States

Million Pounds



**Total Cheese, Excluding Cottage Cheese: Production by
State and United States, August 2003-2004**

State	Aug 2003	Jul ¹ 2004	Aug 2004	Change From	
				Aug 2003	Jul 2004
	<i>1,000 Pounds</i>	<i>1,000 Pounds</i>	<i>1,000 Pounds</i>	<i>Percent</i>	<i>Percent</i>
CA	155,885	161,947	157,156	0.8	-3.0
IL	7,201	7,333	7,131	-1.0	-2.8
IA	12,024	11,994	11,731	-2.4	-2.2
MA	57	61	64	12.3	4.9
MN	48,345	48,944	48,341		-1.2
MO	8,169	7,992	9,270	13.5	16.0
NY	56,921	54,621	57,297	0.7	4.9
OH	13,047	15,101	14,922	14.4	-1.2
PA	27,261	28,097	30,537	12.0	8.7
SD	11,523	12,960	12,507	8.5	-3.5
UT	6,397	5,338	4,956	-22.5	-7.2
WI	187,992	191,654	193,039	2.7	0.7
Oth Sts ²	165,310	161,842	165,199	-0.1	2.1
US	700,132	707,884	712,150	1.7	0.6
N Atlantic	100,225	98,394	104,042	3.8	5.7
S Atlantic	3,061	3,401	3,315	8.3	-2.5
E N Central	219,455	224,922	225,194	2.6	0.1
W N Central	81,894	84,957	84,835	3.6	-0.1
S Central	6,880	6,040	6,310	-8.3	4.5
West	288,617	290,170	288,454	-0.1	-0.6

¹ Revised.

² States not shown when fewer than 3 plants reported or individual plant operations could be disclosed. Percent change shown only when comparable States are included in the calculation.

American Cheese: Production by State and United States, August 2003-2004

State	Aug 2003	Jul ¹ 2004	Aug 2004	Change From	
				Aug 2003	Jul 2004
	<i>1,000 Pounds</i>	<i>1,000 Pounds</i>	<i>1,000 Pounds</i>	<i>Percent</i>	<i>Percent</i>
CA	66,438	67,883	65,640	-1.2	-3.3
ID	41,073	43,956	45,856	11.6	4.3
IA	9,638	9,581	9,111	-5.5	-4.9
MN	46,362	46,612	45,780	-1.3	-1.8
NY	5,774	7,660	4,950	-14.3	-35.4
OH	2,782	2,582	2,369	-14.8	-8.2
OR	9,186	8,658	8,724	-5.0	0.8
SD	6,142	7,036	6,470	5.3	-8.0
WI	66,425	69,300	68,920	3.8	-0.5
Oth Sts ²	45,297	39,516	38,771	-14.4	-1.9
US	299,117	302,784	296,591	-0.8	-2.0
Atlantic	11,936	13,368	10,986	-8.0	-17.8
E N Central	70,325	73,011	72,350	2.9	-0.9
W N Central	62,526	63,683	61,758	-1.2	-3.0
S Central	3,864	3,750	3,159	-18.2	-15.8
West	150,466	148,972	148,338	-1.4	-0.4

¹ Revised.

² States not shown when fewer than 3 plants reported or individual plant operations could be disclosed. Percent change shown only when comparable States are included in the calculation.

Cheddar Cheese: Production by State and United States, August 2003-2004

State	Aug 2003	Jul ¹ 2004	Aug 2004	Change From	
				Aug 2003	Jul 2004
	<i>1,000 Pounds</i>	<i>1,000 Pounds</i>	<i>1,000 Pounds</i>	<i>Percent</i>	<i>Percent</i>
CA	45,504	41,349	40,433	-11.1	-2.2
ID	20,132	20,196	20,138		-0.3
MN	41,325	42,603	41,065	-0.6	-3.6
NY	5,668	7,567	4,840	-14.6	-36.0
SD	4,342	3,760	4,718	8.7	25.5
WI	50,123	53,100	51,810	3.4	-2.4
Oth Sts ²	56,089	49,709	49,440	-11.9	-0.5
US	223,183	218,284	212,444	-4.8	-2.7
Atlantic	11,348	12,729	10,777	-5.0	-15.3
E N Cen	52,290	55,256	53,796	2.9	-2.6
W N Cen	52,566	52,941	52,248	-0.6	-1.3
S Cen	3,863	3,749	3,158	-18.3	-15.8
West	103,116	93,609	92,465	-10.3	-1.2

¹ Revised.

² States not shown when fewer than 3 plants reported or individual plant operations could be disclosed. Percent change shown only when comparable States are included in the calculation.

Mozzarella Cheese: Production by State and United States, August 2003-2004

State	Aug 2003	Jul ¹ 2004	Aug 2004	Change From	
				Aug 2003	Jul 2004
	<i>1,000 Pounds</i>	<i>1,000 Pounds</i>	<i>1,000 Pounds</i>	<i>Percent</i>	<i>Percent</i>
CA	71,754	69,670	69,580	-3.0	-0.1
NY	16,782	14,387	14,164	-15.6	-1.6
PA	13,762	14,548	15,843	15.1	8.9
WI	66,155	65,600	67,310	1.7	2.6
Oth Sts ²	64,065	63,553	65,007	1.5	2.3
US	232,518	227,758	231,904	-0.3	1.8
Atlantic ³	38,640	36,643	38,229	-1.1	4.3
E N Central	76,349	75,480	76,709	0.5	1.6
West	111,095	108,297	109,725	-1.2	1.3

¹ Revised.

² States not shown when fewer than 3 plants reported or individual plant operations could be disclosed. Percent change shown only when comparable States are included in the calculation.

³ Region totals may not add to U.S. when compiled regions could not be disclosed.

Butter: Production by State and United States, August 2003-2004

State	Aug 2003	Jul ¹ 2004	Aug 2004	Change From	
				Aug 2003	Jul 2004
	<i>1,000 Pounds</i>	<i>1,000 Pounds</i>	<i>1,000 Pounds</i>	<i>Percent</i>	<i>Percent</i>
CA	22,842	30,398	31,754	39.0	4.5
NY	1,685	1,223	1,172	-30.4	-4.2
PA	3,602	4,410	2,936	-18.5	-33.4
WI	17,883	23,175	26,070	45.8	12.5
Oth Sts ²	24,904	32,023	26,976	8.3	-15.8
US	70,916	91,229	88,908	25.4	-2.5
N Atlantic ³	6,957	7,727	6,504	-6.5	-15.8
E N Central	18,849	24,481	27,110	43.8	10.7
W N Central	5,221	6,916	6,282	20.3	-9.2
West	35,500	43,419	43,855	23.5	1.0

¹ Revised.

² States not shown when fewer than 3 plants reported or individual plant operations could be disclosed. Percent change shown only when comparable States are included in the calculation.

³ Region totals may not add to U.S. when compiled regions could not be disclosed.

**Nonfat Dry Milk, Human: Production by State
and United States, August 2003-2004**

State	Aug 2003	Jul ¹ 2004	Aug 2004	Change From	
				Aug 2003	Jul 2004
	<i>1,000 Pounds</i>	<i>1,000 Pounds</i>	<i>1,000 Pounds</i>	<i>Percent</i>	<i>Percent</i>
CA	57,109	66,019	64,181	12.4	-2.8
Oth Sts ²	49,951	68,017	50,158	0.4	-26.3
US	107,060	134,036	114,339	6.8	-14.7
Atlantic	6,760	17,031	12,699	87.9	-25.4
E N Central	2,887	4,153	3,363	16.5	-19.0
W N Central	2,341	6,983	5,803	147.9	-16.9
S Central	2,700	7,204	3,964	46.8	-45.0
West	92,372	98,665	88,510	-4.2	-10.3

¹ Revised.

² States not shown when fewer than 3 plants reported or individual plant operations could be disclosed. Percent change shown only when comparable States are included in the calculation.

**Dry Whey, Human: Production by State
and United States, August 2003-2004**

State	Aug 2003	Jul ¹ 2004	Aug 2004	Change From	
				Aug 2003	Jul 2004
	<i>1,000 Pounds</i>	<i>1,000 Pounds</i>	<i>1,000 Pounds</i>	<i>Percent</i>	<i>Percent</i>
CA	9,813	9,978	11,527	17.5	15.5
MN	8,584	4,772	4,222	-50.8	-11.5
NY	10,467	10,664	10,031	-4.2	-5.9
PA	6,343	6,884	8,104	27.8	17.7
UT	2,182	2,057	1,898	-13.0	-7.7
WI	24,989	23,612	23,270	-6.9	-1.4
Oth Sts ²	19,665	19,872	19,886	1.1	0.1
US	82,043	77,839	78,938	-3.8	1.4
Atlantic	16,810	17,548	18,135	7.9	3.3
Central	42,178	37,163	35,614	-15.6	-4.2
West	23,055	23,128	25,189	9.3	8.9

¹ Revised.

² States not shown when fewer than 3 plants reported or individual plant operations could be disclosed. Percent change shown only when comparable States are included in the calculation.

Ice Cream, Hard: Production by State and United States, August 2003-2004

State	Aug 2003	Jul ¹ 2004	Aug 2004	Change From	
				Aug 2003	Jul 2004
	<i>1,000 Gallons</i>	<i>1,000 Gallons</i>	<i>1,000 Gallons</i>	<i>Percent</i>	<i>Percent</i>
CA	11,212	10,018	11,164	-0.4	11.4
FL	2,393	2,000	1,800	-24.8	-10.0
IL	3,309	3,309	3,171	-4.2	-4.2
IN	6,567	7,983	6,840	4.2	-14.3
MD	1,596	1,653	1,599	0.2	-3.3
MA	5,982	4,149	3,941	-34.1	-5.0
MI	1,572	1,380	1,500	-4.6	8.7
MN	3,200	3,558	3,405	6.4	-4.3
MO	1,605	1,801	1,847	15.1	2.6
NY	2,701	3,176	2,400	-11.1	-24.4
NC	1,530	1,422	1,145	-25.2	-19.5
OH	2,648	2,287	2,295	-13.3	0.3
OR	1,435	1,508	1,450	1.0	-3.8
PA	3,973	4,668	4,463	12.3	-4.4
TN	1,780	1,330	1,466	-17.6	10.2
TX	4,300	3,878	3,487	-18.9	-10.1
UT	1,900	2,133	2,428	27.8	13.8
Oth Sts ²	19,679	22,506	19,338	-1.7	-14.1
US	77,382	78,759	73,739	-4.7	-6.4
N Atlantic	15,060	15,247	13,136	-12.8	-13.8
S Atlantic	6,814	6,440	5,685	-16.6	-11.7
E N Central	14,909	15,948	14,650	-1.7	-8.1
W N Central	11,841	13,231	12,297	3.9	-7.1
S Central	10,505	9,704	9,065	-13.7	-6.6
West	18,253	18,189	18,906	3.6	3.9

¹ Revised.

² States not shown when fewer than 3 plants reported or individual plant operations could be disclosed. Percent change shown only when comparable States are included in the calculation.

**Canned Milk and Dry Milk Products: Manufacturers' Shipments,
Stocks, and Selling Prices, August, 2003-2004**

Product	Aug 2003	Jul 2004 ¹	Aug 2004	Change From	
				Aug 2003	Jul 2004
	Manufacturers' Shipments ²				
	<i>1,000 Pounds</i>	<i>1,000 Pounds</i>	<i>1,000 Pounds</i>	<i>Percent</i>	<i>Percent</i>
Nonfat Dry Milk, Human	109,574	112,719	106,357	-2.9	-5.6
	Manufacturers' Stocks End-of-Month ³				
	<i>1,000 Pounds</i>	<i>1,000 Pounds</i>	<i>1,000 Pounds</i>	<i>Percent</i>	<i>Percent</i>
Canned Evaporated and Condensed Whole Milk	88,647	82,040	85,494	-3.6	4.2
Nonfat Dry Milk, Human	71,942	161,146	147,106	104.5	-8.7
Dry Buttermilk, Total	2,271	5,699	5,624	147.6	-1.3

¹ Revised.

² For dry products, shipments of bulk goods only.

³ Stocks held by manufacturers at all points and in transit.

Procedures and Reliability: Estimates included in this report are based on data provided each month by manufacturers of these products. In 32 States, the State Departments of Agriculture assist in collection of data, which eliminates duplicate reporting and reduces respondent burden. Data are collected by mail, personal and telephone interviews following the close of each month. There were 1,126 manufacturers that made one or more products in 2003. Each month, reports are generally received from all dairy plants in States with small numbers of plants. In States with large numbers of plants, survey procedures are designed to obtain monthly reports from all large plants and from a sample of small plants. Monthly estimates are based upon returns from about 70 percent of the plants which account for 70 to 90 percent of the total production of major dairy products.

Revision Policy: Monthly estimates are subject to revision the month following the preliminary estimates. Annual estimates are published in the "**Dairy Products**" report published each April which includes any revisions made to current and previous year. An attempt is made to get information from all plants for preparing these estimates

ACCESS TO REPORTS!!

For your convenience, there are several ways to obtain NASS reports, data products, and services:

INTERNET ACCESS

All NASS reports are available free of charge on the worldwide Internet. For access, connect to the Internet and go to the NASS Home Page at: www.usda.gov/nass/. Select "Today's Reports" or Publications and then Reports Calendar or Publications and then Search, by Title or Subject.

E-MAIL SUBSCRIPTION

All NASS reports are available by subscription free of charge direct to your e-mail address. Starting with the NASS Home Page at www.usda.gov/nass/, click on **Publications**, then click on the **Subscribe by E-mail** button which takes you to the page describing e-mail delivery of reports. Finally, click on **Go to the Subscription Page** and follow the instructions.

PRINTED REPORTS OR DATA PRODUCTS

CALL OUR TOLL-FREE ORDER DESK: 800-999-6779 (U.S. and Canada)
Other areas, please call 703-605-6220 FAX: 703-605-6900
(Visa, MasterCard, check, or money order acceptable for payment.)

ASSISTANCE

For **assistance** with general agricultural statistics or further information about NASS or its products or services, contact the **Agricultural Statistics Hotline** at **800-727-9540**, 7:30 a.m. to 4:00 p.m. ET, or e-mail: nass@nass.usda.gov.

The United States Department of Agriculture (USDA) prohibits discrimination in all its programs on the basis of race, color, national origin, gender, religion, age, disability, political beliefs, sexual orientation, and marital or family status. (Not all prohibited bases apply to all programs.) Persons with disabilities who require alternative means for communication of program information (braille, large print, audiotape, etc.) should contact the USDA's TARGET Center at 202-720-2600 (voice and TDD).

To file a complaint of discrimination, write USDA, Director, Office of Civil Rights, Room 326-W, Whitten Building, 1400 Independence Avenue, SW, Washington, D.C., 20250-9410, or call 202-720-5964 (voice or TDD). USDA is an equal opportunity provider and employer.